

	Current	Δ from YD	Δ from 7D Avg
Nat Gas Prompt	\$ 4.60 ▲	\$ 0.17 ▲	\$ 0.14

	Current	Δ from YD	Δ from 7D Avg
WTI Prompt	\$ 93.64 ▲	\$ 2.57 ▲	\$ 2.0

	Current	Δ from YD	Δ from 7D Avg
Brent Prompt	\$ 97.35 ▲	\$ 1.96 ▲	\$ 3.5

Page Menu

[Short-term Weather Model Outlooks](#)

[Lower 48 Component Models](#)

[Regional S/D Models Storage Projection](#)

[Weather Model Storage Projection](#)

[Supply – Demand Trends](#)

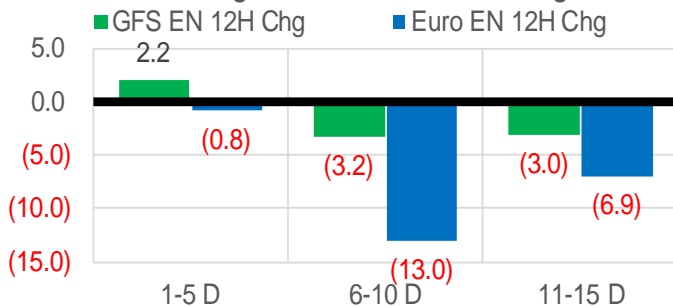
[Nat Gas Options Volume and Open Interest](#)

[Nat Gas Futures Open Interest](#)

[Price Summary](#)

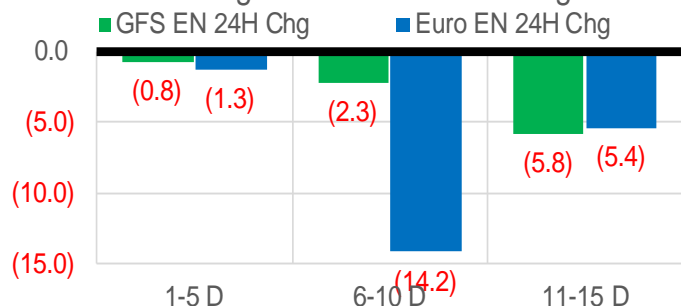
Vs. 12H Ago

L48 Region - 00z TDD vs 12H Ago



Vs. 24H Ago

L48 Region - 00z TDD vs 24H Ago



	Current	Δ from YD	Δ from 7D Avg
US Dry Production	95.4 ▼	-0.16 ▼	-0.28

	Current	Δ from YD	Δ from 7D Avg
US Power Burns	23.8 ▼	-5.67 ▼	-3.15

	Current	Δ from YD	Δ from 7D Avg
US ResComm	31.4 ▼	-0.51 ▼	-6.79

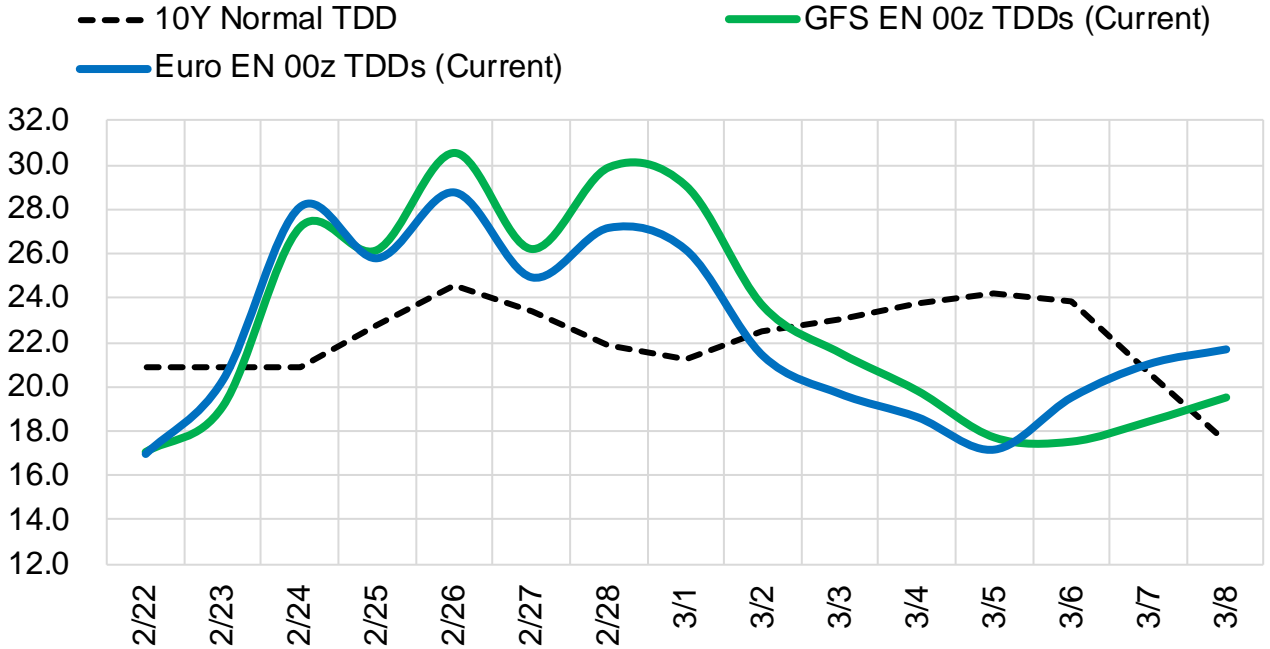
	Current	Δ from YD	Δ from 7D Avg
Canadian Imports	5.6 ▼	-0.60 ▼	-0.56

	Current	Δ from YD	Δ from 7D Avg
Net LNG Exports	11.6 ▲	0.80 ▼	-1.00

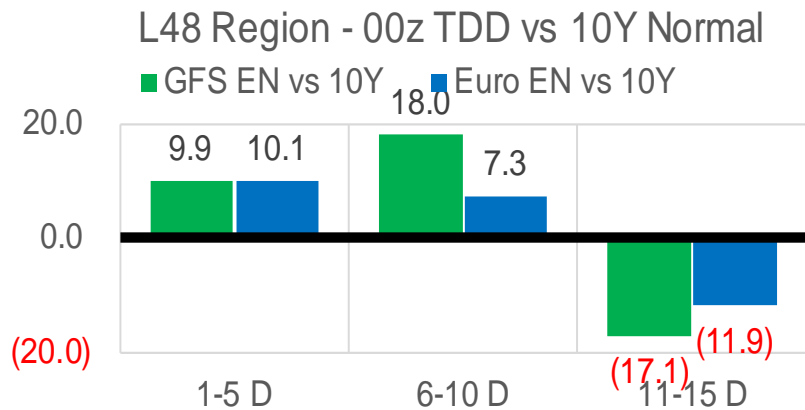
	Current	Δ from YD	Δ from 7D Avg
Mexican Exports	5.9 ▼	-0.15 ▼	-0.11

Short-term Weather Model Outlooks (00z)

L48 Region



Vs. 10Y Normal



Source: WSI , Bloomberg

Lower 48 Component Models

Daily Balances

	16-Feb	17-Feb	18-Feb	19-Feb	20-Feb	21-Feb	22-Feb	DoD	vs. 7D
Lower 48 Dry Production	96.1	95.7	95.4	96.0	95.1	95.6	95.4	▼-0.2	▼-0.2
Canadian Imports	6.0	5.5	6.3	6.5	6.2	6.2	5.6	▼-0.6	▼-0.5
L48 Power	24.4	23.8	25.4	29.8	29.6	29.5	23.8	▼-5.7	▼-3.3
L48 Residential & Commercial	31.4	32.8	43.0	46.2	38.7	31.9	31.4	▼-0.5	▼-6.0
L48 Industrial	25.9	27.1	28.5	28.9	27.9	27.1	26.8	▼-0.3	▼-0.8
L48 Lease and Plant Fuel	5.3	5.2	5.2	5.2	5.2	5.2	5.2	▼0.0	▼0.0
L48 Pipeline Distribution	2.6	2.7	3.2	3.6	3.2	2.9	2.6	▼-0.3	▼-0.4
L48 Regional Gas Consumption	89.6	91.6	105.3	113.7	104.7	96.6	89.8	▼-6.8	▼-10.5
Net LNG Delivered	13.02	13.24	13.48	13.31	11.81	10.84	11.64	▲0.8	▼-1.0
Total Mexican Exports	6.1	6.0	6.1	5.8	5.7	6.0	5.9	▼-0.2	▼-0.1
Implied Daily Storage Activity	-6.6	-9.7	-23.2	-30.3	-20.9	-11.7	-6.3		
EIA Reported Daily Storage Activity									
Daily Model Error									

EIA Storage Week Balances

	14-Jan	21-Jan	28-Jan	4-Feb	11-Feb	18-Feb	WoW	vs. 4W
Lower 48 Dry Production	95.0	94.7	94.5	94.4	92.0	96.0	▲4.0	▲2.1
Canadian Imports	6.5	7.0	7.1	7.1	7.1	6.2	▼-1.0	▼-0.9
L48 Power	30.4	30.3	32.1	29.8	29.4	26.6	▼-2.8	▼-3.8
L48 Residential & Commercial	46.3	47.1	52.8	48.2	45.0	39.6	▼-5.5	▼-8.7
L48 Industrial	26.8	28.0	27.6	28.2	25.8	26.9	▲1.1	▼-0.5
L48 Lease and Plant Fuel	5.2	5.2	5.2	5.2	5.0	5.2	▲0.2	▲0.1
L48 Pipeline Distribution	3.7	3.8	4.1	3.7	3.5	3.1	▼-0.4	▼-0.7
L48 Regional Gas Consumption	112.4	114.3	121.7	115.1	108.8	101.5	▼-7.3	▼-13.5
Net LNG Exports	12.3	12.9	12.5	12.1	12.4	13.0	▲0.6	▲0.5
Total Mexican Exports	6.3	6.4	6.5	6.4	6.1	6.0	▼-0.1	▼-0.3
Implied Daily Storage Activity	-29.5	-32.0	-39.0	-32.1	-28.2	-18.4	9.8	
EIA Reported Daily Storage Activity	-29.4	-31.3	-38.3	-31.7	-27.1			
Daily Model Error	-0.1	-0.7	-0.8	-0.4	-1.1			

Monthly Balances

	2Yr Ago Feb-20	LY Feb-21	Oct-21	Nov-21	Dec-21	Jan-22	MTD Feb-22	MoM	vs. LY
Lower 48 Dry Production	94.2	84.3	94.3	95.6	96.9	94.9	94.0	▼-0.9	▲9.7
Canadian Imports	5.3	6.4	5.4	5.3	4.8	6.7	6.7	▼-0.1	▲0.3
L48 Power	30.2	27.6	30.5	29.1	28.4	30.8	28.3	▼-2.5	▲0.6
L48 Residential & Commercial	40.6	48.1	12.4	27.1	32.6	48.3	42.2	▼-6.2	▼-5.9
L48 Industrial	25.1	21.1	21.1	24.3	25.1	27.7	26.9	▼-0.8	▲5.8
L48 Lease and Plant Fuel	5.1	4.6	5.2	5.2	5.3	5.2	5.1	▼-0.1	▲0.5
L48 Pipeline Distribution	3.5	3.6	2.4	2.9	3.0	3.8	3.3	▼-0.5	▼-0.2
L48 Regional Gas Consumption	104.5	104.9	71.6	88.7	94.4	115.8	105.8	▼-10.0	▲0.8
Net LNG Exports	8.5	8.4	10.6	11.4	12.1	12.4	12.6	▲0.2	▲4.2
Total Mexican Exports	5.2	5.7	6.6	6.1	6.2	6.3	6.1	▼-0.2	▲0.4
Implied Daily Storage Activity	-18.7	-28.4	10.9	-5.3	-11.0	-32.9	-23.8		
EIA Reported Daily Storage Activity									
Daily Model Error									

Source: Bloomberg, analytix.ai

Daily Average Generation Data

Nuclear Generation Daily Average - GWh (NRC)

	14-Feb	15-Feb	16-Feb	17-Feb	18-Feb	19-Feb	20-Feb	DoD	vs. 7D
NRC Nuclear Daily Output	88.3	88.2	88.2	88.5	88.5	88.5	88.5	0.0	0.2
NRC Nuclear Max Capacity	104.9	104.9	104.9	104.9	104.9	104.9	104.9	0.0	0.0
NRC Nuclear Outage	16.5	16.7	16.7	16.3	16.3	16.3	16.3	0.0	-0.2
NRC % Nuclear Cap Utilization	89.8	89.6	89.6	90.0	90.0	90.0	90.0	0.0	0.2

Wind Generation Daily Average - MWh (EIA)

	14-Feb	15-Feb	16-Feb	17-Feb	18-Feb	19-Feb	20-Feb	DoD	vs. 7D
CALI Wind	2749	4765	3356	1404	749	823	2653	1829	345
TEXAS Wind	15919	21879	21139	18341	5585	10436	19456	9020	3906
US Wind	48141	77882	83983	69559	54906	59392	79854	20461	14210

Generation Daily Average - MWh (EIA)

	14-Feb	15-Feb	16-Feb	17-Feb	18-Feb	19-Feb	20-Feb	DoD	vs. 7D
US Wind	48141	77882	83983	69559	54906	59392	79854	20461	14210
US Solar	13886	10259	10670	10269	13210	13901	14283	381	2250
US Petroleum	6199	5651	3121	3051	2526	2906	2148	-758	-1761
US Other	10232	9994	8368	8002	7660	7656	7705	49	-947
US Coal	117860	106540	94693	97889	103379	99661	86265	-13395	-17072
US Nuke	93506	93280	93172	93149	92491	91935	92105	169	-818
US Hydro	33656	32632	31442	31602	33910	32653	32173	-480	-476
US Gas	162211	140783	120022	125765	151754	145942	119533	-26409	-21547

See National Wind and Nuclear daily charts

Source: Bloomberg, analytix.ai

Storage Week Average Generation Data

Nuclear Generation Weekly Average - GWh (NRC)

	14-Jan	21-Jan	28-Jan	4-Feb	11-Feb	18-Feb	WoW	WoW Bcf/d Impact
NRC Nuclear Daily Output	90.6	89.7	89.7	89.5	87.6	88.2	0.6	-0.1
NRC Nuclear Max Capacity	104.9	104.9	104.9	104.9	104.9	104.9	0.0	
NRC Nuclear Outage	14.3	15.1	15.2	15.4	17.3	16.7	-0.6	
NRC % Nuclear Cap Utilization	0.1	0.1	0.1	0.1	0.1	0.1	0.0	

Wind Generation Weekly Average - MWh (EIA)

	14-Jan	21-Jan	28-Jan	4-Feb	11-Feb	18-Feb	WoW	WoW Bcf/d Impact
CALI Wind	1266	1273	1580	1627	1156	2105	949	-0.2
TEXAS Wind	10192	15630	7185	12223	9259	16874	7615	-1.4
US Wind	50716	55686	45244	53914	53944	63318	9374	-1.7
					30.0		1.8	
					0%		1.8	
							1.2	

Generation Weekly Average - MWh (EIA)

	14-Jan	21-Jan	28-Jan	4-Feb	11-Feb	18-Feb	WoW	WoW Bcf/d Impact
						est.		
US Wind	50716	55686	45244	53914	53944	63318	9374	-1.7
US Solar	9389	8609	10087	10457	12288	12005	-282	0.1
US Petroleum	4915	5260	5993	4672	3554	4126	573	-0.1
US Other	8254	8109	9663	9656	9374	9013	-362	0.1
US Coal	115096	117880	130576	124851	113847	101772	-12075	2.2
US Nuke	95713	94657	94693	94661	92640	92758	118	0.0
US Hydro	34200	34490	34134	31807	32213	31897	-317	0.1
US Gas	161930	156870	177834	159397	162271	137675	-24596	

See National Wind and Nuclear daily charts

Source: Bloomberg, analytix.ai

Monthly Average Generation Data

Nuclear Generation Monthly Average - GWh (NRC)

	2Yr Ago		LY		MTD		Last 30 days	MoM (MTD vs LY)	Last 30 days YoY
	Same 30 days	Same 30 days	Nov-21	Dec-21	Jan-22	Feb-22			
	NRC Nuclear Daily Output	91.6	90.4	82.8	90.3	90.2			
NRC Nuclear Max Capacity	104.9	104.9	104.9	104.9	104.9	104.9	104.9	0.0	0.0
NRC Nuclear Outage	13.3	14.4	22.0	14.6	14.7	16.6	16.4	1.9	1.9
NRC % Nuclear Cap Utilization	93.1	92.0	84.2	91.8	91.7	89.7	90.0	-2.0	-1.9

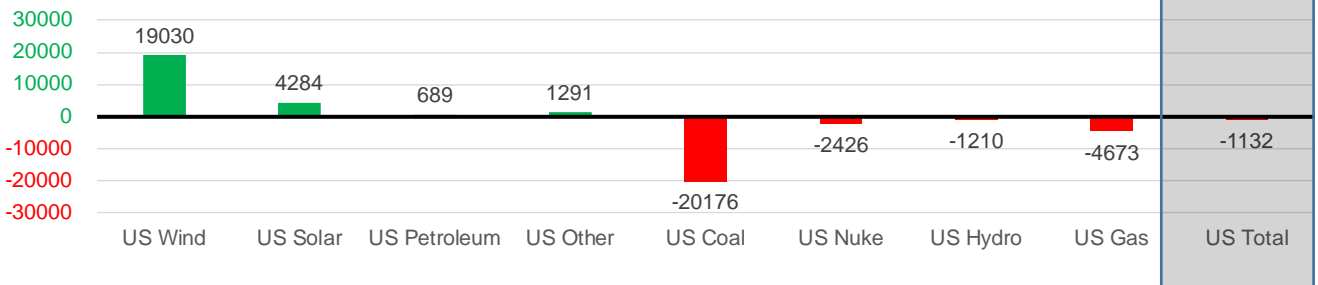
Wind Generation Monthly Average - MWh (EIA)

	2Yr Ago		LY		MTD		Last 30 days	MoM (MTD vs LY)	Last 30 days YoY
	Same 30 days	Same 30 days	Nov-21	Dec-21	Jan-22	Feb-22			
	CALI Wind	1356	1947	1224	1585	1364			
TEXAS Wind	9864	9312	11678	12927	11355	13785	12514	2430	3202
US Wind	35368	38884	49838	54810	51165	62401	57913	11236	19030

Generation Monthly Average - MWh (EIA)

	2Yr Ago		LY		MTD		Last 30 days	MoM (MTD vs LY)	Last 30 days YoY
	Same 30 days	Same 30 days	Nov-21	Dec-21	Jan-22	Feb-22			
	US Wind	35368	38884	49838	54810	51165			
US Solar	6369	7568	9688	7376	9476	12253	11851	▼-401.6	▲4284
US Petroleum	3428	3338	3022	3135	5021	3403	4028	▲625	▲689
US Other	7098	7848	8445	8222	8792	8854	9139	▲285	▲1291
US Coal	78820	132285	80906	81617	118026	105188	112109	▲6921	▼-20176
US Nuke	92582	95677	87558	95449	95259	92805	93251	▲446	▼-2426
US Hydro	36198	33550	26649	30826	34108	32068	32339	▲272	▼-1210
US Gas	165366	156936	151991	152627	164026	146028	152263	▲3659	▼-4673
US Total	428420	474327	418455	434177	485997	463279	473195	▲11807	▼-1132

Last 30 days YoY



See National Wind and Nuclear daily charts

Source: Bloomberg, analytix.ai

Regional S/D Models Storage Projection

Week Ending 18-Feb

	Daily Raw Storage	Daily Adjustment Factor	Daily Average Storage Activity (Adjusted) *	Weekly Adjusted Storage Activity
L48	-18.2	0.9	-17.4	-122
East	-8.0	1.8	-6.1	-43
Midwest	-6.0	-0.2	-6.1	-43
Mountain	2.2	-3.3	-1.1	-8
South Central	-6.9	3.1	-3.8	-27
Pacific	0.3	-0.6	-0.3	-2

*Adjustment Factor is calculated based on historical regional deltas

U.S. underground natural gas storage facilities by type (July 2015)

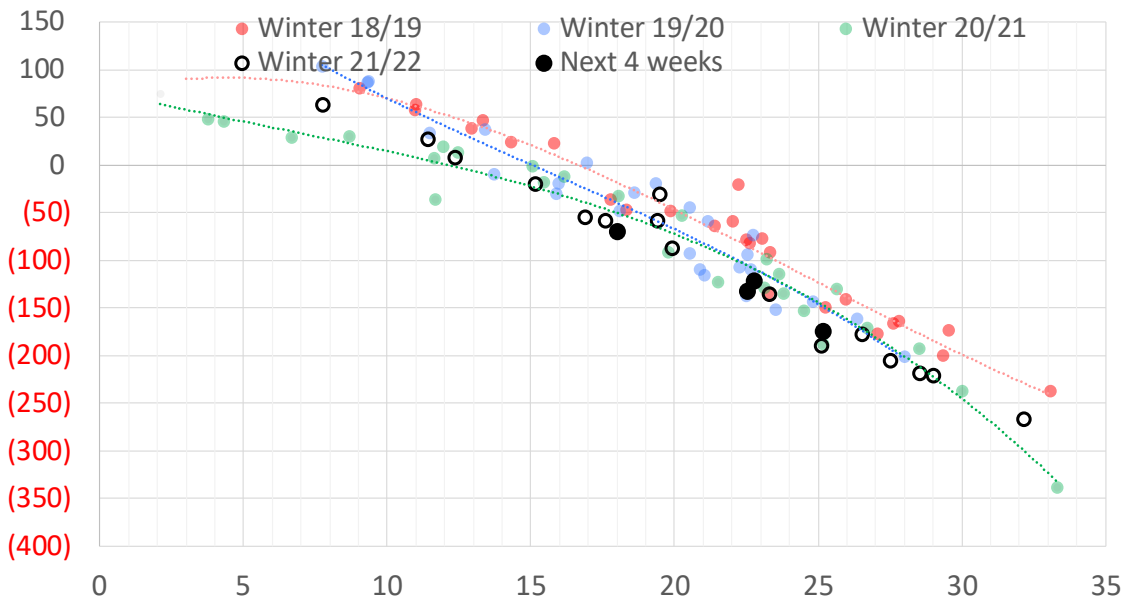


Weather Model Storage Projection

Next report
and beyond

Week Ending	GWDDs	Week Storage Projection
18-Feb	23	-122
25-Feb	23	-132
04-Mar	25	-174
11-Mar	18	-70

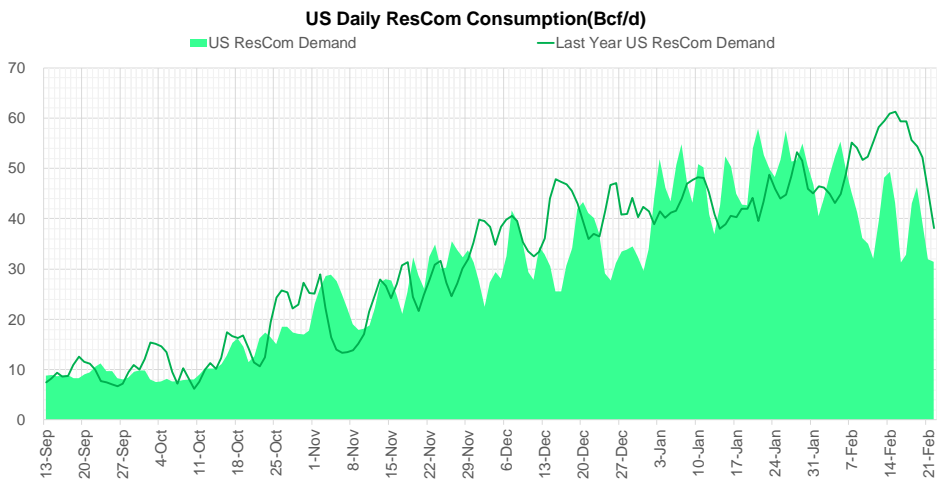
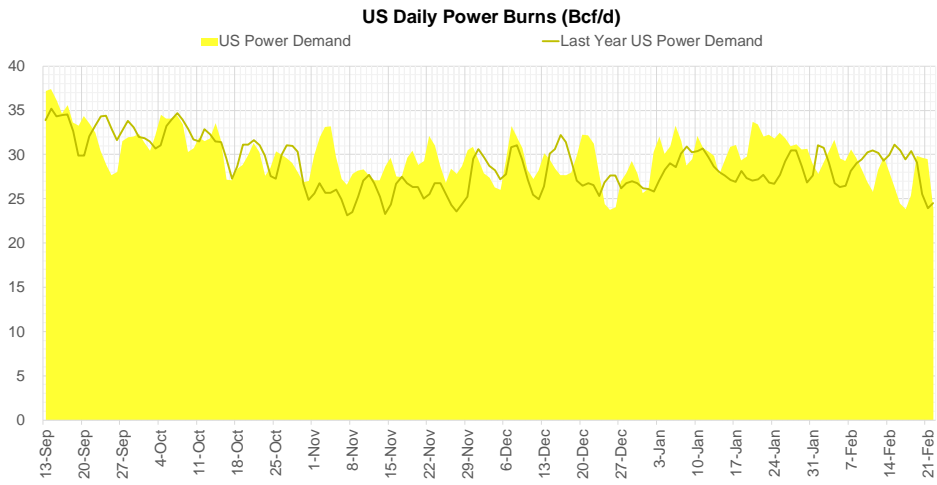
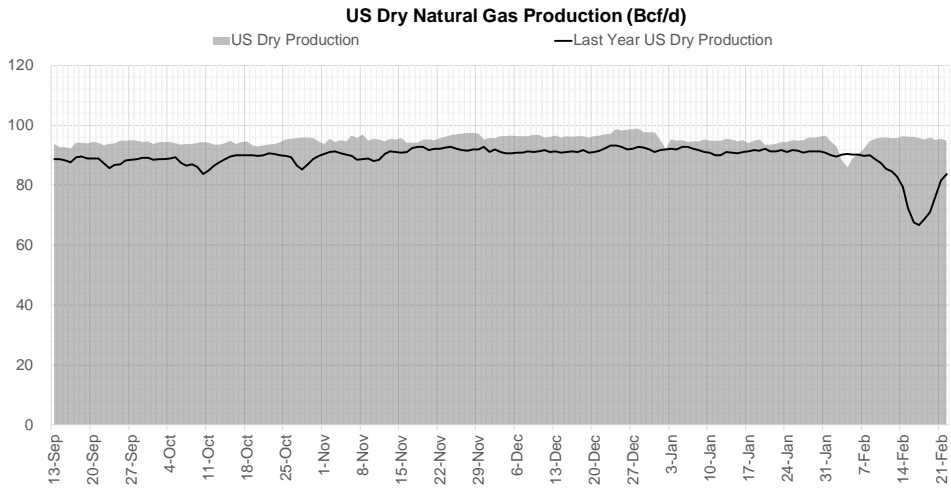
Weather Storage Model - Next 4 Week Forecast



Go to larger image



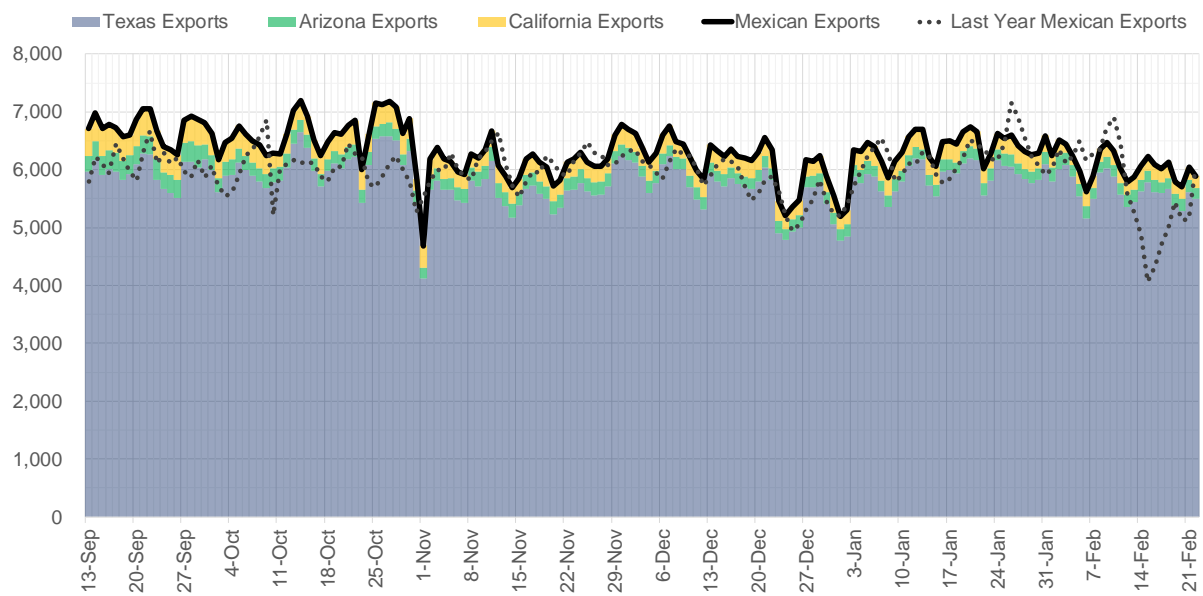
Supply – Demand Trends



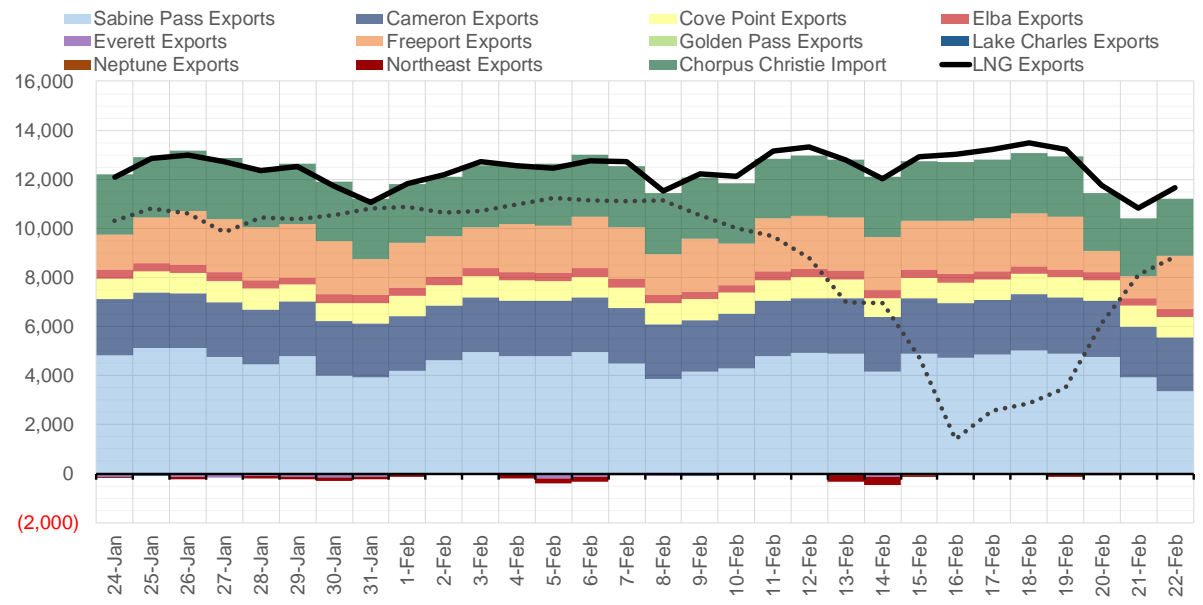
Source: Bloomberg

The risk of trading futures and options and other derivatives involves a substantial risk of loss and is not suitable for all persons. Each person must consider whether a particular trade, combination of trades, or strategy is suitable for that person's financial means and objectives. Past results are not necessarily indicative of future results. This communication may contain links to third party websites which are not under the control of and are not maintained by ION Energy Group, and ION Energy Group is not responsible for their content.

Mexican Exports (MMcf/d)



Net LNG Exports - Last 30 days (MMcf/d)



Source: Bloomberg

The risk of trading futures and options and other derivatives involves a substantial risk of loss and is not suitable for all persons. Each person must consider whether a particular trade, combination of trades, or strategy is suitable for that person's financial means and objectives. Past results are not necessarily indicative of future results. This communication may contain links to third party websites which are not under the control of and are not maintained by ION Energy Group, and ION Energy Group is not responsible for their content.

Nat Gas Options Volume and Open Interest CME and ICE Combined

ICE Data not
updated today

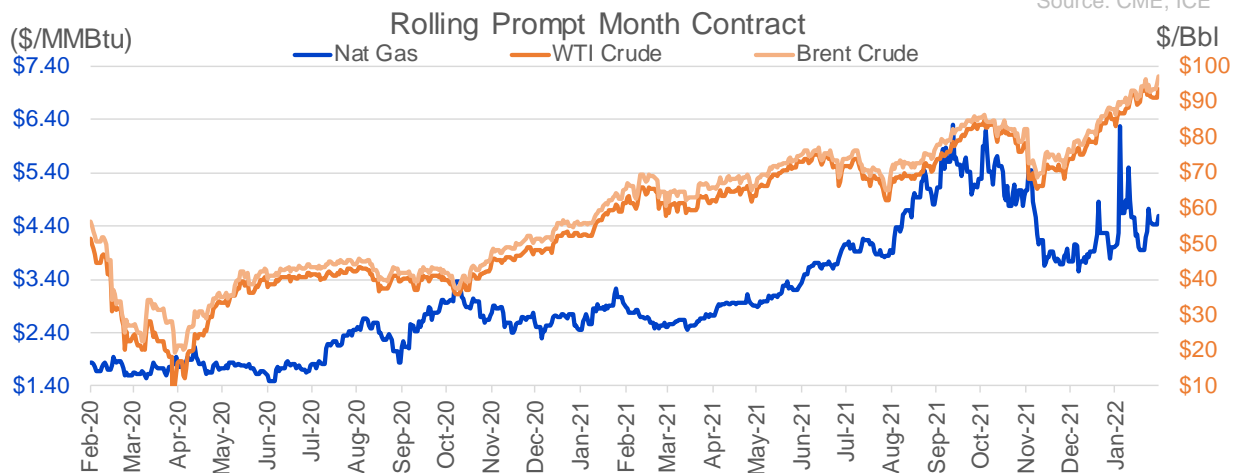
CONTRACT MONTH	CONTRACT YEAR	PUT/CALL	STRIKE	CUMULATIVE VOL	CONTRACT MONTH	CONTRACT YEAR	PUT/CALL	STRIKE	CUMULATIVE OI
3	2022	P	4.00	6879	3	2022	P	3.00	45355
4	2022	P	3.50	5704	3	2022	C	10.00	41865
3	2022	C	5.00	4496	3	2022	P	4.00	39484
3	2022	C	5.50	4030	3	2022	C	5.00	39053
4	2022	P	3.65	3872	4	2022	P	3.50	37527
4	2022	C	6.00	3871	3	2022	P	3.50	32717
4	2022	P	3.00	3841	3	2022	P	3.75	31803
3	2022	C	4.50	3074	10	2022	C	6.00	27322
3	2022	C	5.25	2586	4	2022	C	5.00	26347
3	2022	P	4.25	2474	3	2022	C	8.00	26071
4	2022	C	7.00	2139	4	2022	P	3.00	25878
4	2022	C	5.00	2122	3	2022	C	6.00	25200
3	2022	C	4.75	1885	3	2022	C	4.50	24274
1	2023	C	6.00	1850	3	2022	P	2.50	24084
2	2023	C	6.00	1850	3	2022	P	4.50	23117
3	2023	C	6.00	1850	3	2022	C	4.00	23075
5	2022	C	5.00	1828	5	2022	P	3.00	22107
3	2022	P	4.30	1749	10	2022	C	5.00	21919
3	2022	P	4.50	1701	6	2022	C	6.00	20953
3	2022	C	6.00	1687	3	2022	C	7.00	20660
4	2022	C	5.50	1519	3	2022	P	3.25	20519
3	2022	P	4.40	1453	5	2022	C	5.00	20241
3	2022	C	5.75	1340	5	2022	P	2.50	19877
3	2022	P	3.75	1311	3	2022	P	3.90	19686
11	2022	C	6.00	1300	6	2022	C	5.00	19674
11	2022	C	9.00	1300	4	2022	C	6.00	18945
3	2022	P	4.10	1177	4	2022	C	4.50	18216
5	2022	C	6.00	1104	6	2022	P	3.00	17634
3	2022	C	4.70	1086	4	2022	C	3.00	17511
4	2022	C	5.75	1063	10	2022	P	3.00	17380
7	2022	C	5.50	1041	12	2022	C	5.00	17341
7	2022	C	7.00	1001	5	2022	C	6.00	17292
4	2022	P	4.00	1000	4	2022	P	2.50	17193
7	2022	P	2.75	1000	3	2022	C	5.50	17138
3	2022	C	4.85	899	5	2022	P	2.75	17019
3	2022	C	4.60	884	9	2022	C	6.00	16995
4	2022	P	3.25	793	7	2022	P	3.25	16586
3	2022	P	3.90	716	4	2022	P	4.00	16530
3	2022	P	4.20	708	7	2022	C	6.00	16119
12	2022	C	5.00	700	3	2022	P	5.00	15435
5	2022	C	7.00	690	4	2022	C	8.00	15337
5	2022	C	6.25	678	4	2022	C	4.75	15247
5	2022	C	5.25	651	3	2022	P	2.00	14981
6	2022	C	5.00	633	4	2022	P	3.65	14964
6	2022	C	6.00	631	8	2022	C	6.00	14746
3	2022	C	4.80	613	8	2022	P	3.00	14741
3	2022	P	4.15	603	4	2022	P	3.25	14716
5	2022	C	5.75	600	7	2022	P	3.00	14537
3	2022	C	5.15	592	4	2022	C	7.00	14094
					4	2022	C	4	14082

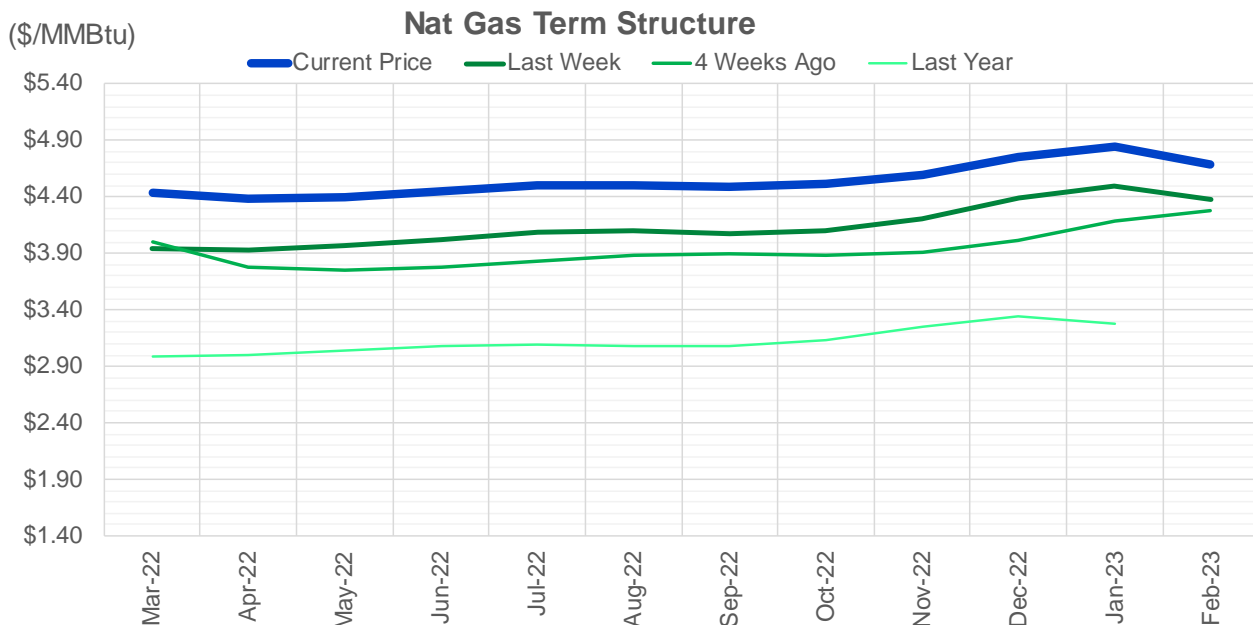
Source: CME, ICE

Nat Gas Futures Open Interest CME and ICE Combined

ICE Data not updated today

CME Henry Hub Futures (10,000 MMBtu)				ICE Henry Hub Futures Contract Equivalent (10,000 MM			
	Current	Prior	Daily Change		Current	Prior	Daily Change
MAR 22	21700	54942	-33242	MAR 22	75907	77839	-1932
APR 22	137994	131033	6961	APR 22	81865	81183	682
MAY 22	179562	178943	619	MAY 22	80354	79994	361
JUN 22	70847	72250	-1403	JUN 22	71617	72171	-554
JUL 22	84109	80534	3575	JUL 22	67278	66935	343
AUG 22	43651	42746	905	AUG 22	61844	61227	618
SEP 22	68012	65250	2762	SEP 22	61755	61511	244
OCT 22	79654	75795	3859	OCT 22	67943	67936	7
NOV 22	44906	43261	1645	NOV 22	55020	55138	-118
DEC 22	42273	41049	1224	DEC 22	65227	65306	-79
JAN 23	57059	56064	995	JAN 23	58734	58161	573
FEB 23	21768	21036	732	FEB 23	44771	44705	67
MAR 23	43006	40785	2221	MAR 23	47787	47666	121
APR 23	33781	32579	1202	APR 23	47479	47466	14
MAY 23	22312	21018	1294	MAY 23	41530	41429	101
JUN 23	13128	12633	495	JUN 23	38569	38457	113
JUL 23	10928	10036	892	JUL 23	38439	38370	70
AUG 23	7771	7230	541	AUG 23	38070	37930	140
SEP 23	10853	10188	665	SEP 23	37533	37420	113
OCT 23	19749	19393	356	OCT 23	41765	41595	171
NOV 23	9873	9801	72	NOV 23	40181	40144	38
DEC 23	13448	12895	553	DEC 23	34983	34929	54
JAN 24	12914	12524	390	JAN 24	28176	28154	22
FEB 24	3238	3180	58	FEB 24	19632	19575	57
MAR 24	12601	12429	172	MAR 24	25478	25417	61
APR 24	6736	6472	264	APR 24	18945	18964	-20
MAY 24	2288	2304	-16	MAY 24	18354	18403	-50
JUN 24	1119	1102	17	JUN 24	18296	18329	-33
JUL 24	862	652	210	JUL 24	18960	19009	-50
AUG 24	998	785	213	AUG 24	18772	18765	7





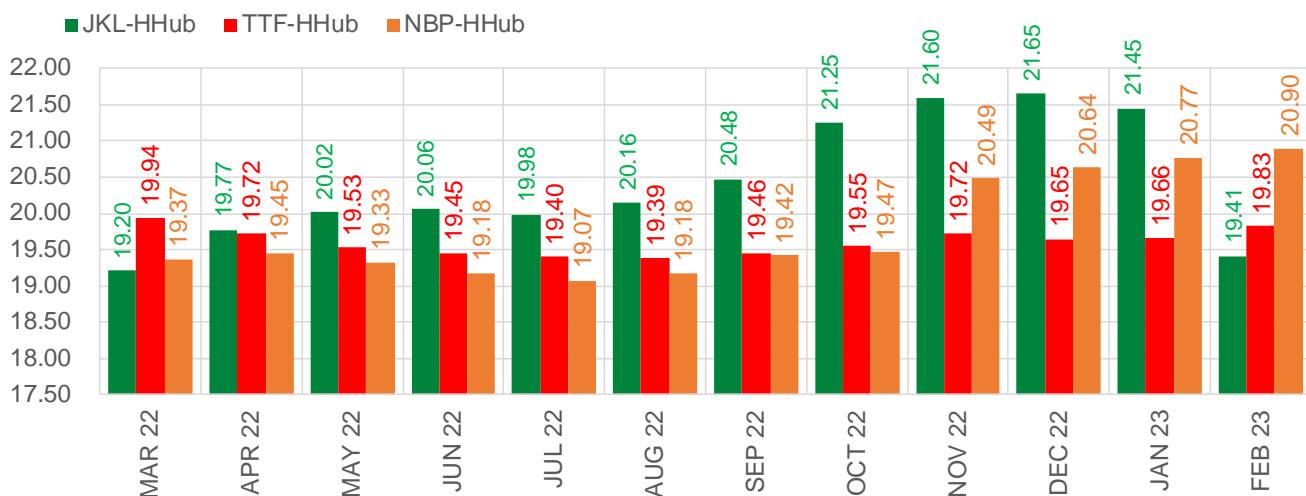
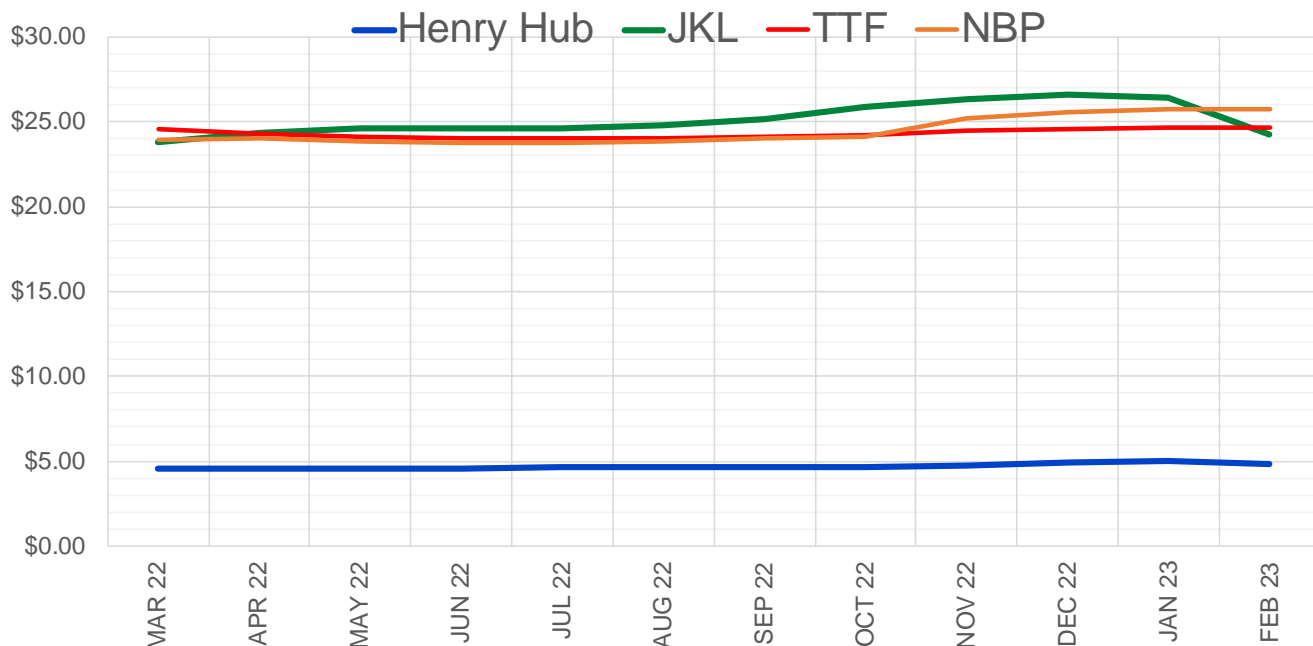
	Mar-22	Apr-22	May-22	Jun-22	Jul-22	Aug-22	Sep-22	Oct-22	Nov-22	Dec-22	Jan-23	Feb-23
Current Price	\$4.431	\$4.377	\$4.398	\$4.443	\$4.496	\$4.505	\$4.488	\$4.510	\$4.600	\$4.753	\$4.851	\$4.687
Last Week	\$3.941	\$3.935	\$3.970	\$4.024	\$4.081	\$4.094	\$4.079	\$4.105	\$4.210	\$4.391	\$4.498	\$4.377
vs. Last Week	\$0.490	\$0.442	\$0.428	\$0.419	\$0.415	\$0.411	\$0.409	\$0.405	\$0.390	\$0.362	\$0.353	\$0.310
4 Weeks Ago	\$3.999	\$3.782	\$3.746	\$3.777	\$3.830	\$3.889	\$3.902	\$3.887	\$3.914	\$4.010	\$4.183	\$4.282
vs. 4 Weeks Ago	\$0.432	\$0.595	\$0.652	\$0.666	\$0.666	\$0.616	\$0.586	\$0.623	\$0.686	\$0.743	\$0.668	\$0.405
Last Year	\$3.069	\$2.991	\$3.001	\$3.038	\$3.079	\$3.087	\$3.073	\$3.084	\$3.135	\$3.252	\$3.343	\$3.272
vs. Last Year	\$1.362	\$1.386	\$1.397	\$1.405	\$1.417	\$1.418	\$1.415	\$1.426	\$1.465	\$1.501	\$1.508	\$1.415

	Units	Cash Settled	Prompt Settle	Cash to Prompt
AGT Citygate	\$/MMBtu	8.60	7.70	-0.90
TETCO M3	\$/MMBtu	4.55	4.02	-0.53
FGT Zone 3	\$/MMBtu	4.60	4.32	-0.28
Zone 6 NY	\$/MMBtu	4.60	4.34	-0.26
Chicago Citygate	\$/MMBtu	4.37	4.08	-0.29
Michcon	\$/MMBtu	4.40	4.05	-0.35
Columbia TCO Pool	\$/MMBtu	4.19	3.72	-0.47
Ventura	\$/MMBtu	4.44	4.17	-0.27
Rockies/Opal	\$/MMBtu	4.36	3.72	-0.64
El Paso Permian Basin	\$/MMBtu	3.93	3.59	-0.34
Socal Citygate	\$/MMBtu	4.67	3.87	-0.80
Malin	\$/MMBtu	4.33	3.80	-0.53
Houston Ship Channel	\$/MMBtu	4.23	4.05	-0.18
Henry Hub Cash	\$/MMBtu	4.61	3.98	-0.64
AECO Cash	C\$/GJ	3.90	3.55	-0.36
Station2 Cash	C\$/GJ	3.91	3.65	-0.26
Dawn Cash	C\$/GJ	4.43	4.17	-0.26

Source: CME, Bloomberg

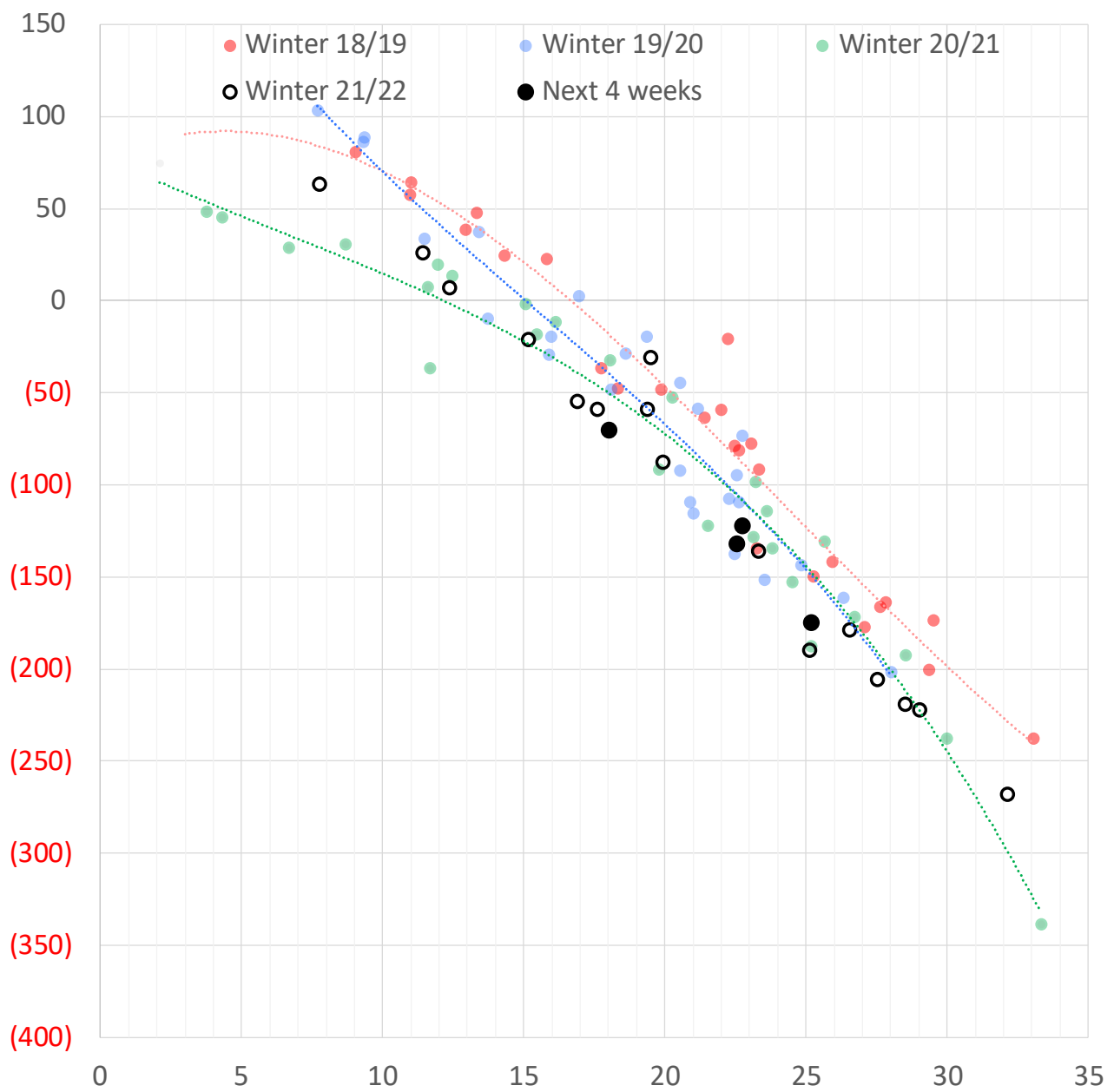
	Units	Current Price	vs. Last Week	vs. 4 Weeks Ago	vs. Last Year
NatGas Jul21/Oct21	\$/MMBtu	2.224	▲ 0.000	▲ 0.000	▲ 2.216
NatGas Oct21/Nov21	\$/MMBtu	0.361	▲ 0.000	▲ 0.000	▲ 0.310
NatGas Oct21/Jan22	\$/MMBtu	-1.817	▲ 0.000	▲ 0.000	▼ -2.086
NatGas Apr22/Oct22	\$/MMBtu	0.133	▼ -0.011	▼ -0.024	▲ 0.114
WTI Crude	\$/Bbl	91.07	▼ -4.390	▲ 7.760	▲ 29.580
Brent Crude	\$/Bbl	95.39	▼ -1.090	▲ 9.120	▲ 30.150
Fuel Oil, NY Harbour 1%	\$/Bbl	97.18	▲ 0.000	▲ 0.000	▲ 0.000
Heating Oil	cents/Gallon	278.15	▼ -18.030	▲ 15.410	▲ 92.290
Propane, Mt. Bel	cents/Gallon	1.29	▲ 0.025	▲ 0.142	▲ 0.378
Ethane, Mt. Bel	cents/Gallon	0.39	▲ 0.007	▲ 0.025	▲ 0.127
Coal, PRB	\$/MTon	12.30	▲ 0.000	▲ 0.000	▲ 0.000
Coal, PRB	\$/MMBtu	0.70			
Coal, ILB	\$/MTon	31.05	▲ 0.000	▲ 0.000	▲ 0.000
Coal, ILB	\$/MMBtu	1.32			

Nat Gas Term Structure (\$MMBTU)



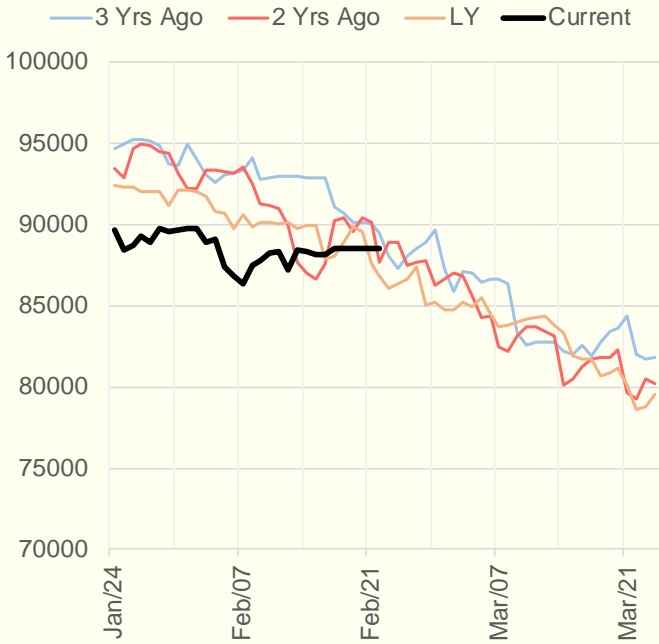
	MAR 22	APR 22	MAY 22	JUN 22	JUL 22	AUG 22	SEP 22	OCT 22	NOV 22	DEC 22	JAN 23	FEB 23
Henry Hub	\$4.601	\$4.539	\$4.559	\$4.597	\$4.649	\$4.660	\$4.642	\$4.669	\$4.750	\$4.922	\$4.996	\$4.857
JKL	\$23.805	\$24.310	\$24.575	\$24.655	\$24.625	\$24.815	\$25.120	\$25.915	\$26.345	\$26.575	\$26.450	\$24.270
JKL-HHub	\$19.204	\$19.771	\$20.016	\$20.058	\$19.976	\$20.155	\$20.478	\$21.246	\$21.595	\$21.653	\$21.454	\$19.413
TTF	\$24.538	\$24.259	\$24.087	\$24.045	\$24.044	\$24.048	\$24.098	\$24.216	\$24.468	\$24.567	\$24.651	\$24.683
TTF-HHub	\$19.937	\$19.720	\$19.528	\$19.448	\$19.395	\$19.388	\$19.456	\$19.547	\$19.718	\$19.645	\$19.655	\$19.826
NBP	\$23.967	\$23.990	\$23.889	\$23.774	\$23.723	\$23.840	\$24.059	\$24.142	\$25.241	\$25.557	\$25.766	\$25.759
NBP-HHub	\$19.366	\$19.451	\$19.330	\$19.177	\$19.074	\$19.180	\$19.417	\$19.473	\$20.491	\$20.635	\$20.770	\$20.902

Weather Storage Model - Next 4 Week Forecast

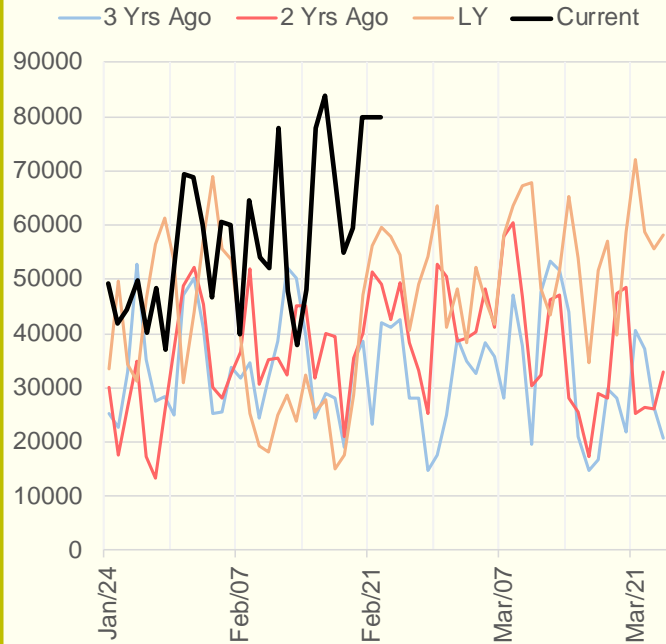


The risk of trading futures and options and other derivatives involves a substantial risk of loss and is not suitable for all persons. Each person must consider whether a particular trade, combination of trades, or strategy is suitable for that person's financial means and objectives. Past results are not necessarily indicative of future results. This communication may contain links to third party websites which are not under the control of and are not maintained by ION Energy Group, and ION Energy Group is not responsible for their content.

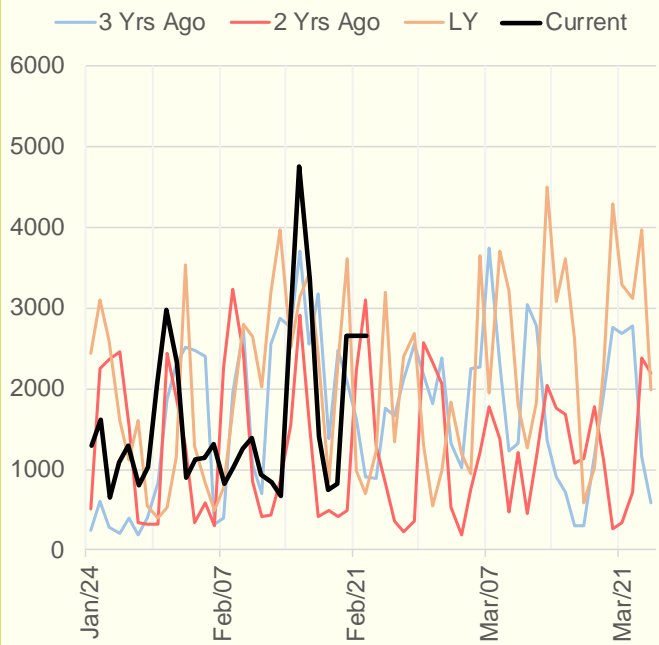
NRC Nuclear Daily Output



US Wind



CALI Wind



TEXAS Wind

