

	Current	Δ from YD	Δ from 7D Avg
Nat Gas Prompt	\$ 4.48	▼ \$ (0.02)	▼ \$ (0.01)

	Current	Δ from YD	Δ from 7D Avg
WTI Prompt	\$ 91.64	▼ \$ (0.71)	▼ \$ (0.1)

	Current	Δ from YD	Δ from 7D Avg
Brent Prompt	\$ 96.69	▼ \$ (0.15)	▲ \$ 2.3

Page Menu

[Short-term Weather Model Outlooks](#)

[Lower 48 Component Models](#)

[Regional S/D Models Storage Projection](#)

[Weather Model Storage Projection](#)

[Supply – Demand Trends](#)

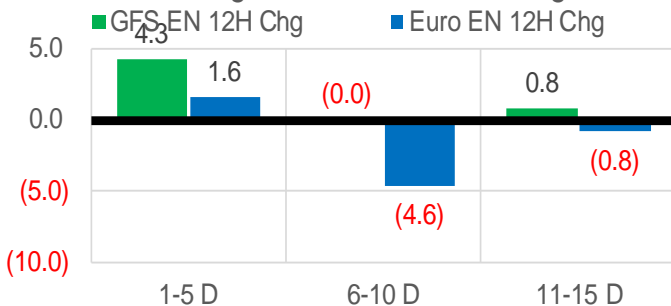
[Nat Gas Options Volume and Open Interest](#)

[Nat Gas Futures Open Interest](#)

[Price Summary](#)

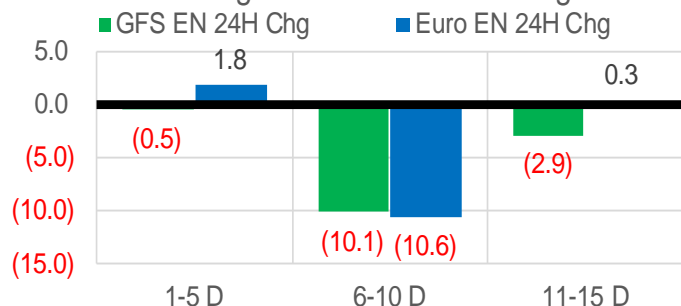
Vs. 12H Ago

L48 Region - 00z TDD vs 12H Ago



Vs. 24H Ago

L48 Region - 00z TDD vs 24H Ago



	Current	Δ from YD	Δ from 7D Avg
US Dry Production	91.9	▼ -2.73	▼ -3.62

	Current	Δ from YD	Δ from 7D Avg
US Power Burns	23.2	▼ -0.57	▼ -3.37

	Current	Δ from YD	Δ from 7D Avg
US ResComm	40.5	▲ 6.57	▲ 3.75

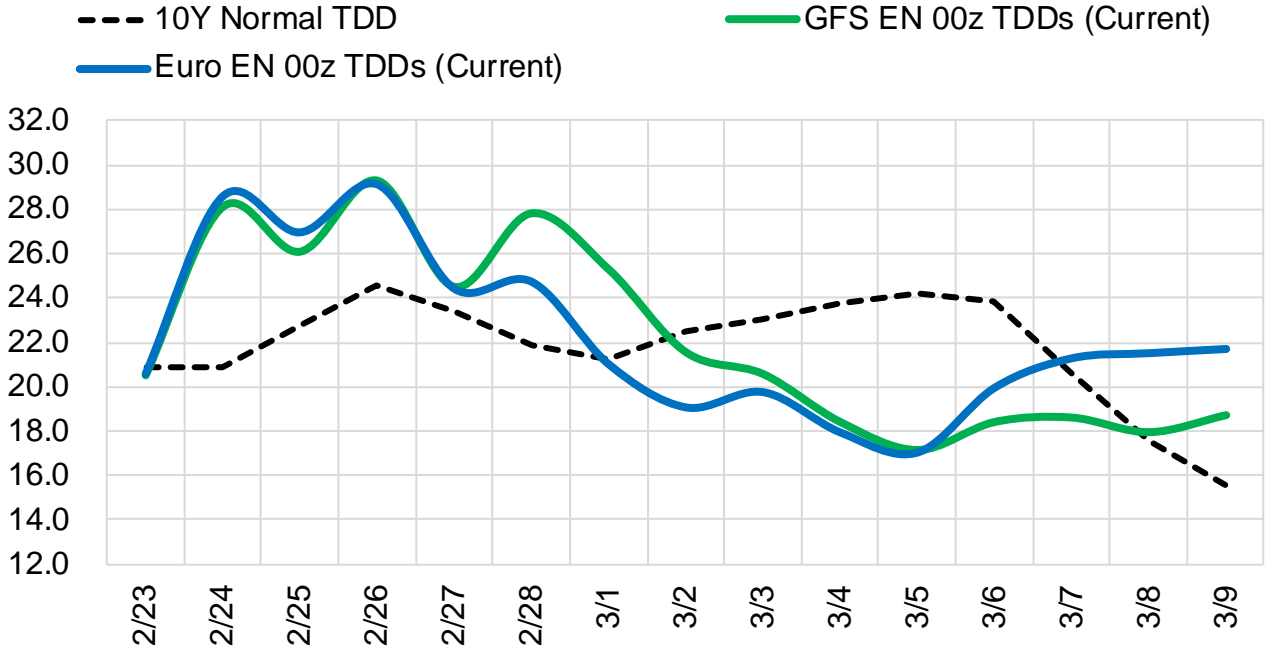
	Current	Δ from YD	Δ from 7D Avg
Canadian Imports	5.6	▲ 0.10	▼ -0.39

	Current	Δ from YD	Δ from 7D Avg
Net LNG Exports	11.4	▲ 0.95	▼ -0.86

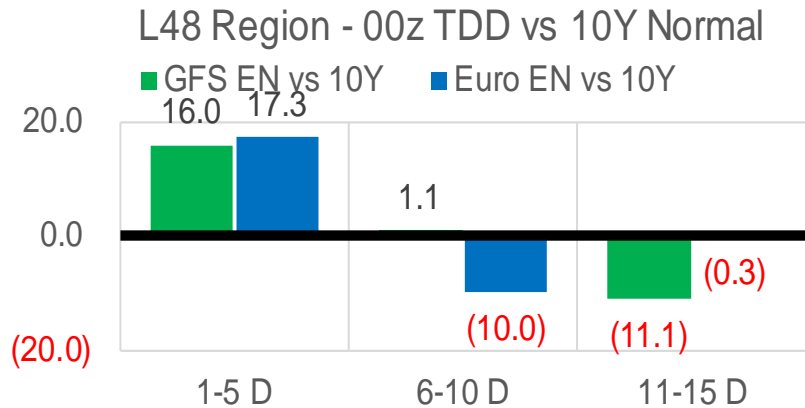
	Current	Δ from YD	Δ from 7D Avg
Mexican Exports	6.2	▲ 0.05	▲ 0.21

Short-term Weather Model Outlooks (00z)

L48 Region



Vs. 10Y Normal



Source: WSI , Bloomberg

Lower 48 Component Models

Daily Balances

	17-Feb	18-Feb	19-Feb	20-Feb	21-Feb	22-Feb	23-Feb	DoD	vs. 7D
Lower 48 Dry Production	95.7	95.5	95.9	95.1	95.6	94.6	91.9	▼-2.7	▼-3.5
Canadian Imports	6.0	6.3	6.5	6.2	5.7	5.5	5.6	▲0.1	▼-0.4
L48 Power	23.8	25.4	29.8	29.6	29.5	23.8	23.2	▼-0.6	▼-3.7
L48 Residential & Commercial	32.8	42.9	46.2	38.6	31.5	33.9	40.5	▲6.6	▲2.9
L48 Industrial	26.6	27.7	27.6	26.5	25.6	25.8	26.4	▲0.7	▼-0.2
L48 Lease and Plant Fuel	5.2	5.2	5.2	5.2	5.2	5.2	5.0	▼-0.2	▼-0.2
L48 Pipeline Distribution	2.7	3.2	3.6	3.2	2.9	2.7	3.0	▲0.3	▼0.0
L48 Regional Gas Consumption	91.2	104.4	112.5	103.1	94.7	91.4	98.2	▲6.8	▼-1.4
Net LNG Delivered	13.24	13.48	13.31	11.81	10.66	10.46	11.41	▲0.9	▼-0.8
Total Mexican Exports	6.0	6.1	5.8	5.7	6.0	6.2	6.2	▲0.0	▲0.2
Implied Daily Storage Activity	-8.7	-22.3	-29.2	-19.4	-10.1	-7.9	-18.3		
EIA Reported Daily Storage Activity									
Daily Model Error									

EIA Storage Week Balances

	14-Jan	21-Jan	28-Jan	4-Feb	11-Feb	18-Feb	WoW	vs. 4W
Lower 48 Dry Production	95.0	94.7	94.5	94.4	92.0	96.0	▲4.0	▲2.1
Canadian Imports	6.5	7.0	7.1	7.1	7.1	6.2	▼-0.9	▼-0.9
L48 Power	30.4	30.3	32.1	29.8	29.4	26.6	▼-2.8	▼-3.8
L48 Residential & Commercial	46.3	47.1	52.8	48.2	45.0	39.6	▼-5.4	▼-8.7
L48 Industrial	26.8	28.0	27.6	28.2	25.8	27.0	▲1.2	▼-0.4
L48 Lease and Plant Fuel	5.2	5.2	5.2	5.2	5.0	5.2	▲0.2	▲0.1
L48 Pipeline Distribution	3.7	3.8	4.1	3.7	3.5	3.1	▼-0.4	▼-0.7
L48 Regional Gas Consumption	112.4	114.3	121.7	115.1	108.8	101.6	▼-7.2	▼-13.4
Net LNG Exports	12.3	12.9	12.5	12.1	12.4	13.0	▲0.6	▲0.5
Total Mexican Exports	6.3	6.4	6.5	6.4	6.1	6.0	▼-0.1	▼-0.3
Implied Daily Storage Activity	-29.5	-32.0	-39.0	-32.1	-28.2	-18.4	9.8	
EIA Reported Daily Storage Activity	-29.4	-31.3	-38.3	-31.7	-27.1			
Daily Model Error	-0.1	-0.7	-0.8	-0.4	-1.0			

Monthly Balances

	2Yr Ago Feb-20	LY Feb-21	Oct-21	Nov-21	Dec-21	Jan-22	MTD Feb-22	MoM	vs. LY
Lower 48 Dry Production	94.2	84.3	94.3	95.6	96.9	94.9	94.0	▼-0.8	▲9.7
Canadian Imports	5.3	6.4	5.4	5.3	4.8	6.7	6.6	▼-0.1	▲0.2
L48 Power	30.2	27.6	30.5	29.1	28.4	30.8	28.1	▼-2.7	▲0.4
L48 Residential & Commercial	40.6	48.1	12.4	27.1	32.6	48.3	41.8	▼-6.6	▼-6.3
L48 Industrial	25.1	21.1	21.1	24.3	25.1	27.7	26.6	▼-1.0	▲5.6
L48 Lease and Plant Fuel	5.1	4.6	5.2	5.2	5.3	5.2	5.1	▼-0.1	▲0.5
L48 Pipeline Distribution	3.5	3.6	2.4	2.9	3.0	3.8	3.3	▼-0.5	▼-0.3
L48 Regional Gas Consumption	104.5	104.9	71.6	88.7	94.4	115.8	104.9	▼-10.9	▼0.0
Net LNG Exports	8.5	8.4	10.6	11.4	12.1	12.4	12.5	▲0.1	▲4.0
Total Mexican Exports	5.2	5.7	6.6	6.1	6.2	6.3	6.1	▼-0.2	▲0.4
Implied Daily Storage Activity	-18.7	-28.4	10.9	-5.3	-11.0	-32.9	-22.8		
EIA Reported Daily Storage Activity									
Daily Model Error									

Source: Bloomberg, analytix.ai

Daily Average Generation Data

Nuclear Generation Daily Average - GWh (NRC)

	15-Feb	16-Feb	17-Feb	18-Feb	19-Feb	20-Feb	21-Feb	DoD	vs. 7D
NRC Nuclear Daily Output	88.2	88.2	88.5	88.5	87.0	87.3	86.3	-0.9	-1.6
NRC Nuclear Max Capacity	104.9	104.9	104.9	104.9	104.9	104.9	104.9	0.0	0.0
NRC Nuclear Outage	16.7	16.7	16.3	16.3	17.8	17.6	18.5	0.9	1.6
NRC % Nuclear Cap Utilization	89.6	89.6	90.0	90.0	88.5	88.7	87.8	-0.9	-1.6

Wind Generation Daily Average - MWh (EIA)

	15-Feb	16-Feb	17-Feb	18-Feb	19-Feb	20-Feb	21-Feb	DoD	vs. 7D
CALI Wind	4765	3356	1404	749	823	2653	4085	1433	1794
TEXAS Wind	21879	21139	18341	5585	10436	19456	21112	1656	4973
US Wind	77882	83983	69559	54906	59392	79854	80104	250	9175

Generation Daily Average - MWh (EIA)

	15-Feb	16-Feb	17-Feb	18-Feb	19-Feb	20-Feb	21-Feb	DoD	vs. 7D
US Wind	77882	83983	69559	54906	59392	79854	80104	250	9175
US Solar	10259	10670	10269	13210	13903	14283	10114	-4169	-1985
US Petroleum	5651	3121	3051	2526	2906	2148	2043	-104	-1191
US Other	10001	8368	8002	7660	7656	7716	8160	443	-74
US Coal	106540	94693	97889	103390	99519	86267	89165	2897	-8885
US Nuke	93280	93172	93149	92491	91935	92105	91125	-980	-1564
US Hydro	32632	31442	31602	33917	32680	32174	33192	1019	785
US Gas	140804	120022	125765	151754	145985	119540	119207	-333	-14772

See National Wind and Nuclear daily charts

Source: Bloomberg, analytix.ai

Storage Week Average Generation Data

Nuclear Generation Weekly Average - GWh (NRC)

	14-Jan	21-Jan	28-Jan	4-Feb	11-Feb	18-Feb	WoW	WoW Bcf/d Impact
NRC Nuclear Daily Output	90.6	89.7	89.7	89.5	87.6	88.2	0.6	-0.1
NRC Nuclear Max Capacity	104.9	104.9	104.9	104.9	104.9	104.9	0.0	
NRC Nuclear Outage	14.3	15.1	15.2	15.4	17.3	16.7	-0.6	
NRC % Nuclear Cap Utilization	0.1	0.1	0.1	0.1	0.1	0.1	0.0	

Wind Generation Weekly Average - MWh (EIA)

	14-Jan	21-Jan	28-Jan	4-Feb	11-Feb	18-Feb	WoW	WoW Bcf/d Impact
CALI Wind	1266	1273	1580	1627	1156	2105	949	-0.2
TEXAS Wind	10192	15630	7185	12223	9259	16874	7615	-1.4
US Wind	50716	55686	45244	53914	53944	63318	9374	-1.7
					30.0		1.8	
					0%		1.8	
							1.2	

Generation Weekly Average - MWh (EIA)

	14-Jan	21-Jan	28-Jan	4-Feb	11-Feb	18-Feb	WoW	WoW Bcf/d Impact
						est.		
US Wind	50716	55686	45244	53914	53944	63318	9374	-1.7
US Solar	9389	8609	10087	10457	12288	12094	-194	0.0
US Petroleum	4915	5260	5993	4672	3554	4126	573	-0.1
US Other	8254	8109	9663	9656	9374	9042	-333	0.1
US Coal	115096	117880	130576	124851	113847	101772	-12075	2.2
US Nuke	95713	94657	94693	94661	92640	92758	118	0.0
US Hydro	34200	34490	34134	31807	32213	31899	-314	0.1
US Gas	161930	156870	177834	159397	162271	137776	-24495	

See National Wind and Nuclear daily charts

Source: Bloomberg, analytix.ai

Monthly Average Generation Data

Nuclear Generation Monthly Average - GWh (NRC)

	2Yr Ago		LY		MTD			Last 30 days	MoM (MTD vs LY)	Last 30 days YoY
	Same 30 days	Same 30 days	Nov-21	Dec-21	Jan-22	Feb-22				
	NRC Nuclear Daily Output	91.4	90.2	82.8	90.3	90.2	87.8			
NRC Nuclear Max Capacity	104.9	104.9	104.9	104.9	104.9	104.9	104.9	0.0	0.0	
NRC Nuclear Outage	13.4	14.6	22.0	14.6	14.7	17.1	16.7	2.4	2.1	
NRC % Nuclear Cap Utilization	93.0	91.8	84.2	91.8	91.7	89.3	89.6	-2.4	-2.1	

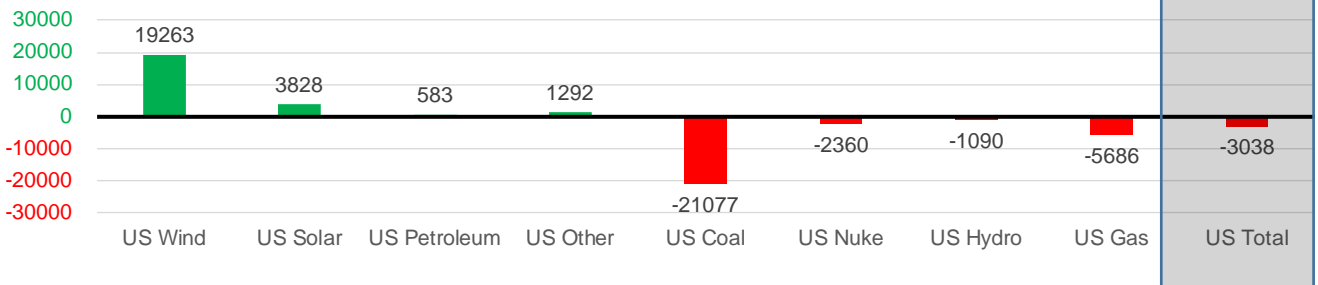
Wind Generation Monthly Average - MWh (EIA)

	2Yr Ago		LY		MTD			Last 30 days	MoM (MTD vs LY)	Last 30 days YoY
	Same 30 days	Same 30 days	Nov-21	Dec-21	Jan-22	Feb-22				
	CALI Wind	1381	1907	1224	1585	1364	1979			
TEXAS Wind	9807	9388	11678	12927	11355	14248	13102	2893	3714	
US Wind	35785	39696	49838	54810	51165	63193	58960	12028	19263	

Generation Monthly Average - MWh (EIA)

	2Yr Ago		LY		MTD			Last 30 days	MoM (MTD vs LY)	Last 30 days YoY
	Same 30 days	Same 30 days	Nov-21	Dec-21	Jan-22	Feb-22				
	US Wind	35785	39696	49838	54810	51165	63193			
US Solar	6408	7715	9688	7376	9476	11824	11543	▼-280.9	▲3828	
US Petroleum	3415	3312	3022	3135	5021	3335	3896	▲561	▲583	
US Other	7047	7826	8445	8222	8792	8872	9118	▲246	▲1292	
US Coal	78886	132272	80906	81617	118026	104738	111195	▲6456	▼-21077	
US Nuke	92394	95441	87558	95449	95259	92646	93080	▲434	▼-2360	
US Hydro	36253	33460	26649	30826	34108	32207	32370	▲163	▼-1090	
US Gas	165686	156274	151991	152627	164026	144866	150589	▲3345	▼-5686	
US Total	428397	474237	418455	434177	485997	462159	471199	▲10924	▼-3038	

Last 30 days YoY



See National Wind and Nuclear daily charts

Source: Bloomberg, analytix.ai

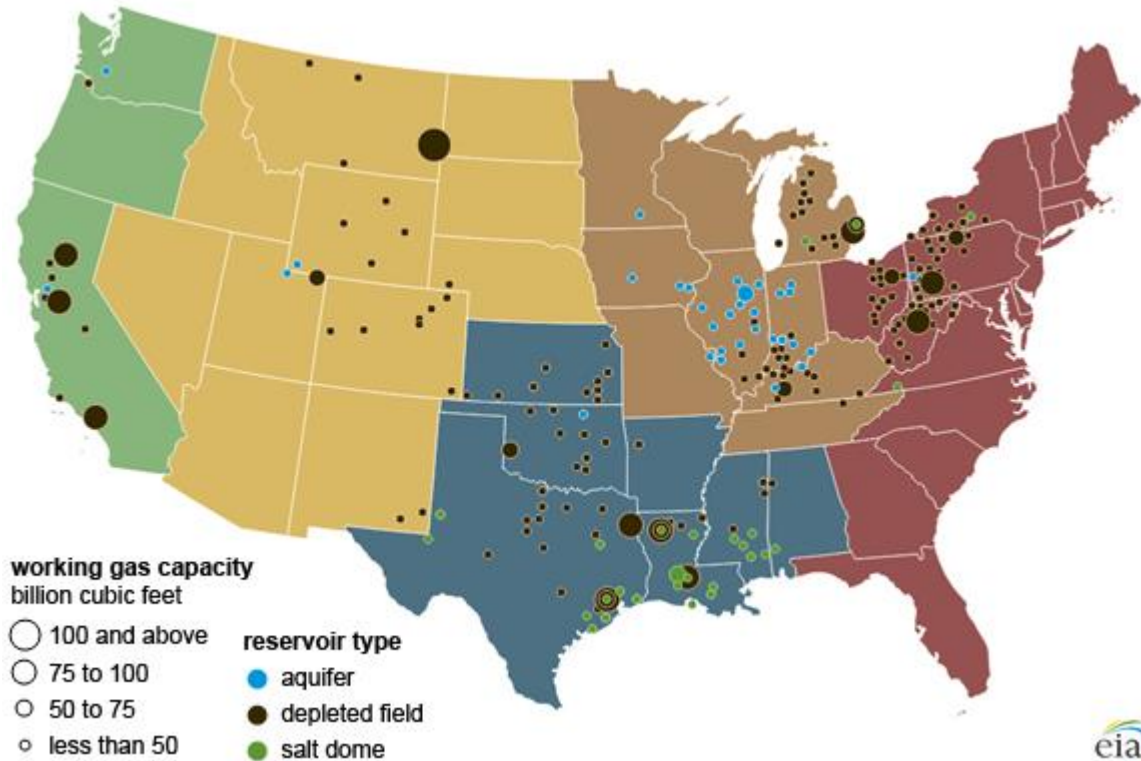
Regional S/D Models Storage Projection

Week Ending 18-Feb

	Daily Raw Storage	Daily Adjustment Factor	Daily Average Storage Activity (Adjusted) *	Weekly Adjusted Storage Activity
L48	-18.2	0.8	-17.4	-122
East	-8.0	1.8	-6.1	-43
Midwest	-5.9	-0.2	-6.1	-43
Mountain	2.2	-3.3	-1.1	-8
South Central	-6.8	3.0	-3.8	-27
Pacific	0.3	-0.6	-0.3	-2

*Adjustment Factor is calculated based on historical regional deltas

U.S. underground natural gas storage facilities by type (July 2015)

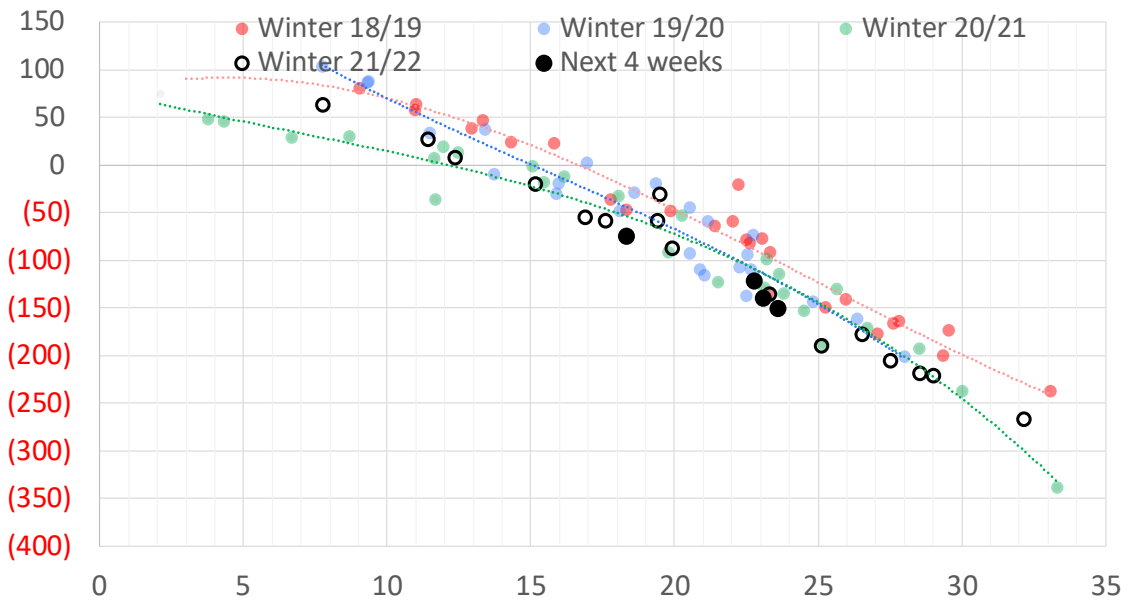


Weather Model Storage Projection

Next report
and beyond

Week Ending	GWDDs	Week Storage Projection
18-Feb	23	-122
25-Feb	23	-140
04-Mar	24	-150
11-Mar	18	-74

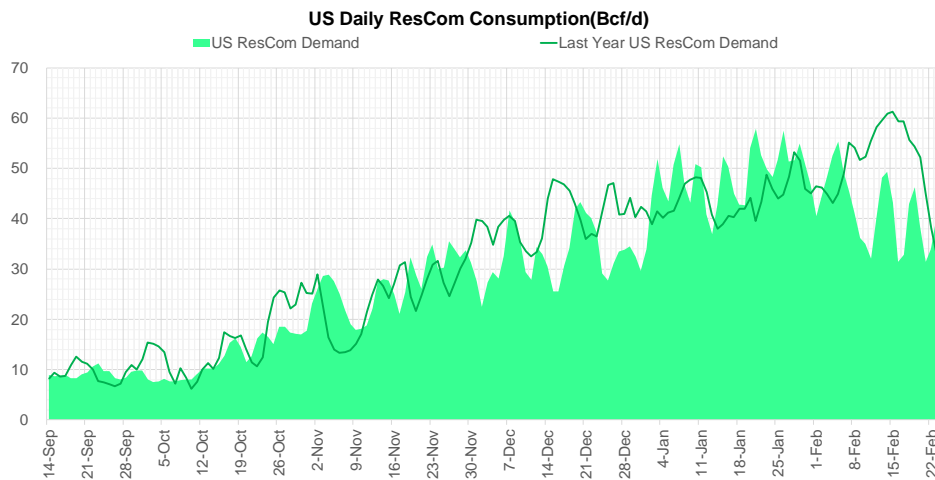
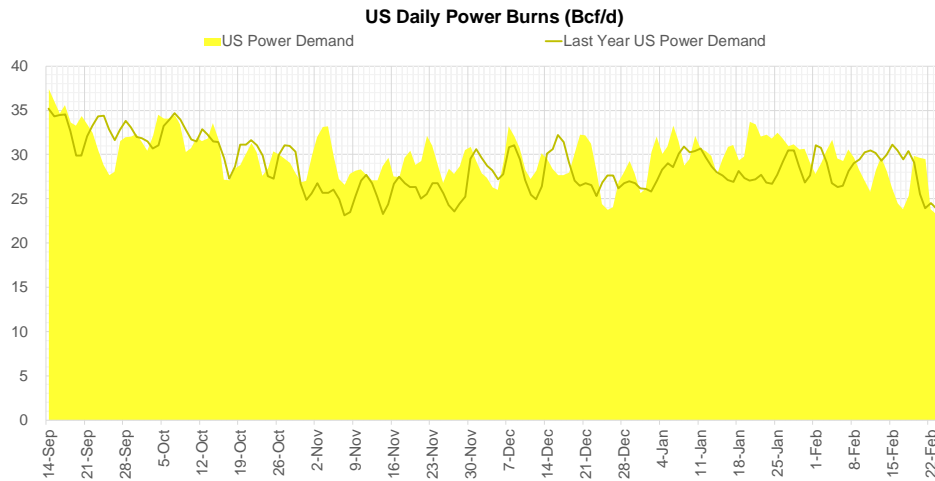
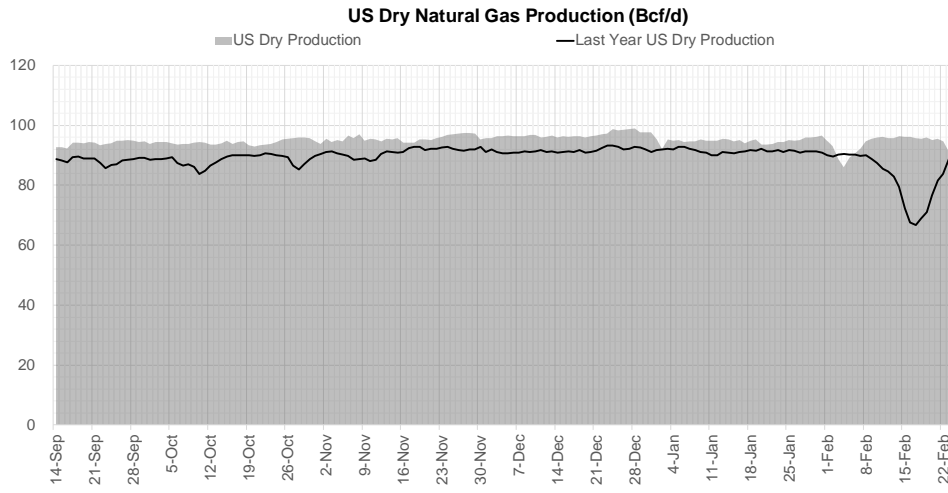
Weather Storage Model - Next 4 Week Forecast



Go to larger image



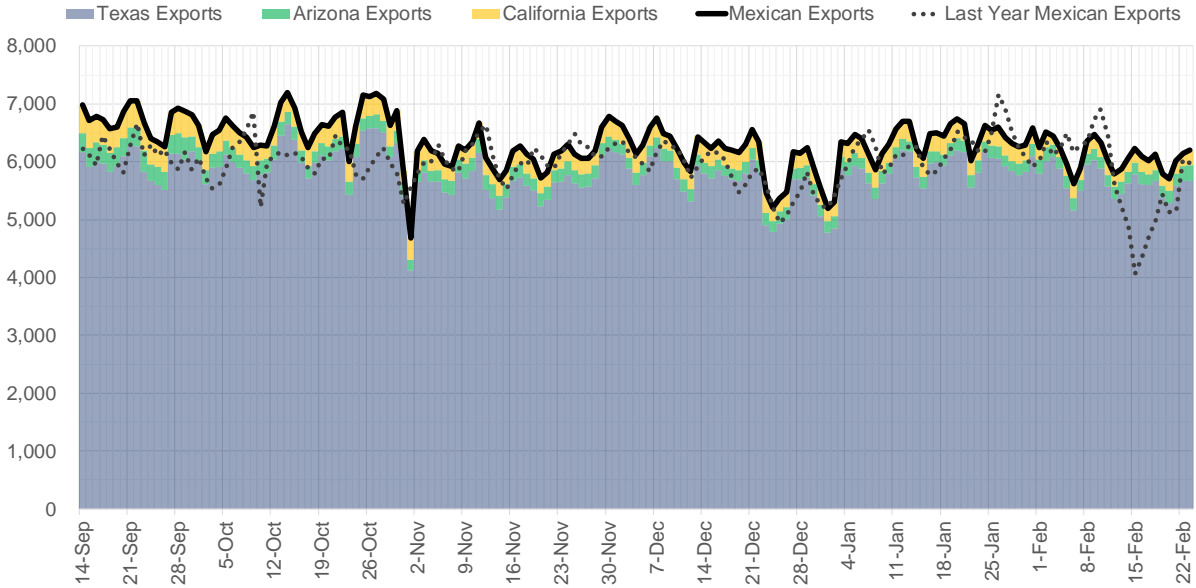
Supply – Demand Trends



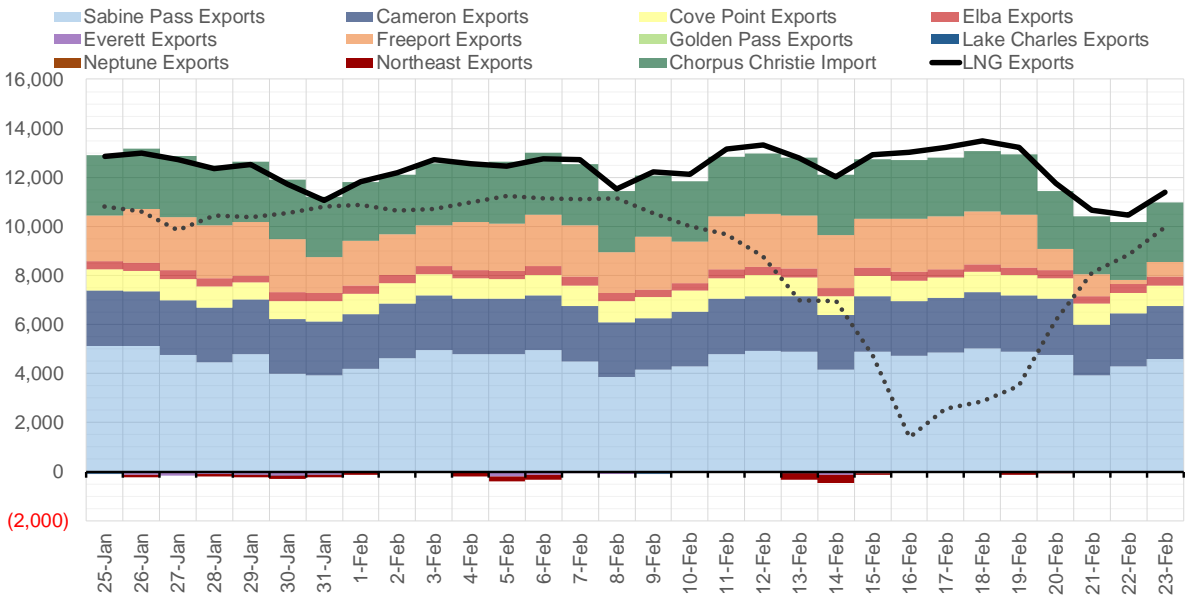
Source: Bloomberg

The risk of trading futures and options and other derivatives involves a substantial risk of loss and is not suitable for all persons. Each person must consider whether a particular trade, combination of trades, or strategy is suitable for that person's financial means and objectives. Past results are not necessarily indicative of future results. This communication may contain links to third party websites which are not under the control of and are not maintained by ION Energy Group, and ION Energy Group is not responsible for their content.

Mexican Exports (MMcf/d)



Net LNG Exports - Last 30 days (MMcf/d)



Source: Bloomberg

The risk of trading futures and options and other derivatives involves a substantial risk of loss and is not suitable for all persons. Each person must consider whether a particular trade, combination of trades, or strategy is suitable for that person's financial means and objectives. Past results are not necessarily indicative of future results. This communication may contain links to third party websites which are not under the control of and are not maintained by ION Energy Group, and ION Energy Group is not responsible for their content.

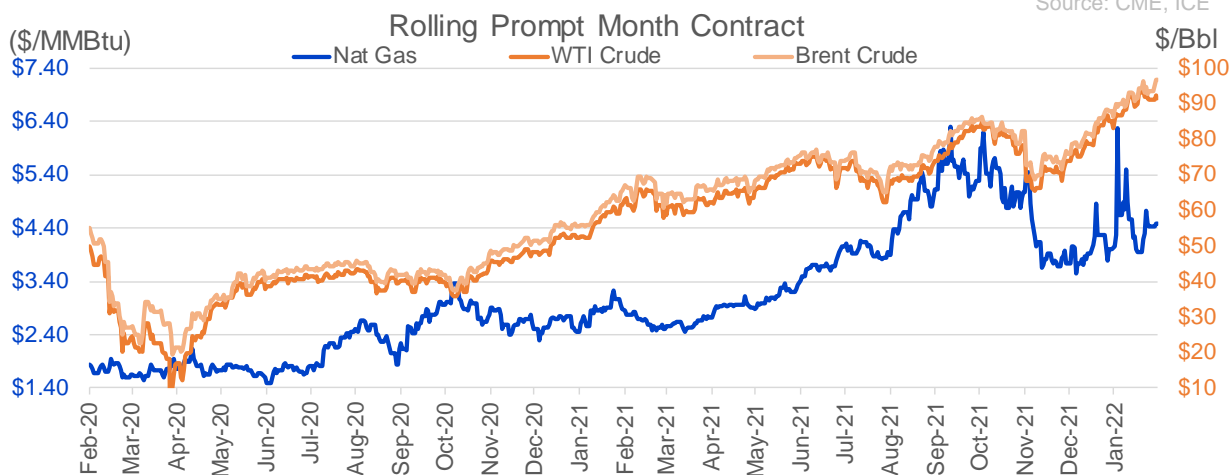
Nat Gas Options Volume and Open Interest CME and ICE Combined

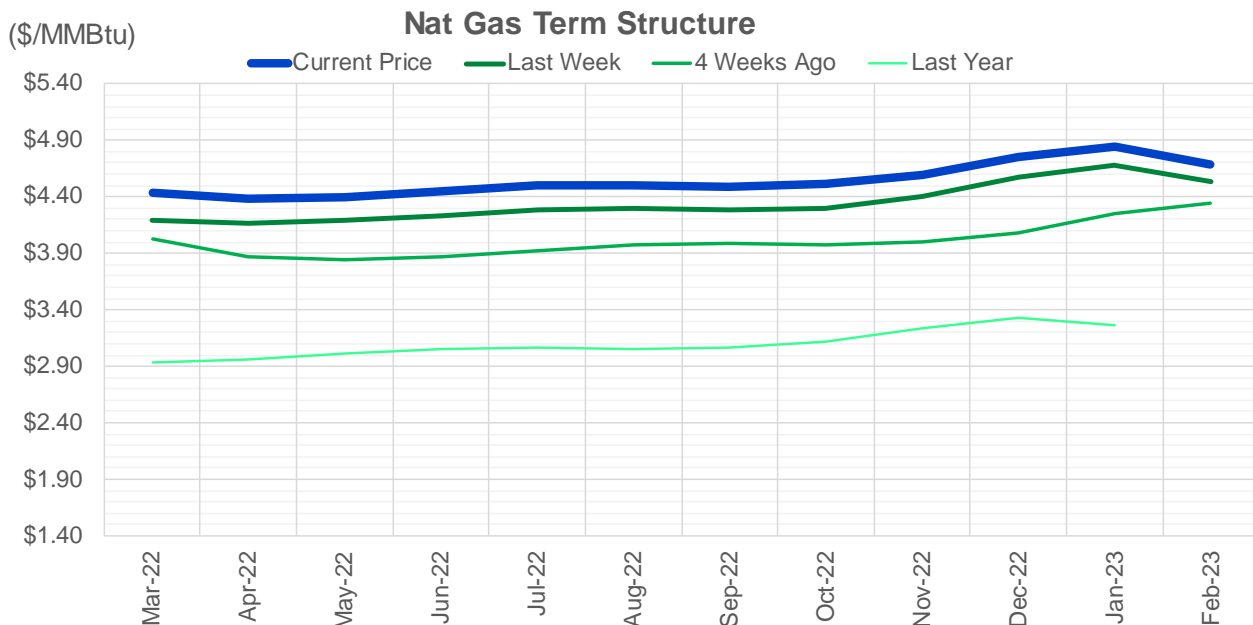
CONTRACT MONTH	CONTRACT YEAR	PUT/CALL	STRIKE	CUMULATIVE VOL	CONTRACT MONTH	CONTRACT YEAR	PUT/CALL	STRIKE	CUMULATIVE OI
3	2022	C	5.00	4798	3	2022	P	3.00	45155
3	2022	P	4.25	4768	3	2022	C	10.00	41865
4	2022	P	4.00	3833	3	2022	P	4.00	41100
3	2022	C	5.50	3028	4	2022	P	3.50	40234
4	2022	C	5.50	2502	3	2022	C	5.00	37930
3	2022	P	4.50	2203	3	2022	P	3.50	32695
3	2022	C	4.75	1915	3	2022	P	3.75	32217
4	2022	C	5.00	1698	4	2022	P	3.00	28182
3	2022	C	4.50	1638	4	2022	C	5.00	27601
3	2022	P	4.40	1635	10	2022	C	6.00	27472
4	2022	P	3.50	1626	3	2022	C	8.00	26060
3	2022	P	4.20	1547	3	2022	C	6.00	24901
10	2022	C	5.00	1515	3	2022	C	4.50	24244
4	2022	P	3.75	1474	3	2022	P	2.50	24084
5	2022	C	5.00	1474	3	2022	P	4.50	23088
3	2022	C	4.60	1437	3	2022	C	4.00	23027
3	2022	P	4.30	1356	5	2022	P	3.00	22214
10	2022	C	6.00	1350	10	2022	C	5.00	21861
3	2022	C	4.70	1307	5	2022	C	5.00	21047
3	2022	P	4.35	1297	3	2022	C	7.00	20657
5	2022	P	3.75	1081	3	2022	P	3.25	20519
3	2022	P	4.10	1053	6	2022	C	6.00	20478
4	2022	C	6.00	994	3	2022	P	3.90	20278
3	2023	C	10.00	950	6	2022	C	5.00	19972
3	2022	C	4.80	894	5	2022	P	2.50	19877
2	2023	P	3.50	850	4	2022	C	6.00	19749
3	2023	P	3.50	850	4	2022	C	4.50	18399
5	2022	C	6.00	842	4	2022	P	3.65	17889
3	2022	C	6.25	804	5	2022	C	6.00	17747
4	2022	C	7.00	743	3	2022	C	5.50	17625
1	2023	C	10.00	705	6	2022	P	3.00	17549
5	2022	P	4.25	701	4	2022	C	3.00	17511
2	2023	C	10.00	700	12	2022	C	5.00	17386
3	2022	P	4.55	633	10	2022	P	3.00	17380
5	2022	P	3.25	550	4	2022	P	2.50	17193
2	2023	C	8.00	550	9	2022	C	6.00	17070
3	2023	C	8.00	550	5	2022	P	2.75	17019
4	2022	P	4.25	534	4	2022	P	4.00	16714
8	2022	P	3.75	531	7	2022	P	3.25	16586
5	2022	C	5.75	530	7	2022	C	6.00	16247
5	2022	C	7.00	521	4	2022	C	5.50	15616
1	2023	C	4.50	500	3	2022	P	5.00	15403
3	2022	P	4.45	485	4	2022	C	8.00	15315
3	2022	P	4.00	478	4	2022	C	4.75	15192
4	2022	C	4.75	464	4	2022	P	3.25	15146
3	2022	P	4.60	461	3	2022	P	2.00	14981
6	2022	C	6.00	461	8	2022	P	3.00	14741
6	2022	C	5.50	452	8	2022	C	6.00	14696
3	2022	C	4.90	448	6	2022	C	4.50	14665
					7	2022	P	3	14537

Source: CME, ICE

Nat Gas Futures Open Interest CME and ICE Combined

CME Henry Hub Futures (10,000 MMBtu)				ICE Henry Hub Futures Contract Equivalent (10,000 MM			
	Current	Prior	Daily Change		Current	Prior	Daily Change
MAR 22	15027	21700	-6673	MAR 22	74347	75907	-1561
APR 22	144130	137994	6136	APR 22	83054	81865	1189
MAY 22	179890	179562	328	MAY 22	81032	80354	678
JUN 22	71171	70847	324	JUN 22	71475	71617	-142
JUL 22	84504	84109	395	JUL 22	66129	67278	-1150
AUG 22	44145	43651	494	AUG 22	61202	61844	-642
SEP 22	68977	68012	965	SEP 22	61901	61755	146
OCT 22	80927	79654	1273	OCT 22	68133	67943	190
NOV 22	44109	44906	-797	NOV 22	55172	55020	152
DEC 22	42342	42273	69	DEC 22	65466	65227	239
JAN 23	60126	57059	3067	JAN 23	58979	58734	245
FEB 23	22541	21768	773	FEB 23	44880	44771	109
MAR 23	43621	43006	615	MAR 23	48349	47787	562
APR 23	34243	33781	462	APR 23	47724	47479	245
MAY 23	22301	22312	-11	MAY 23	41776	41530	246
JUN 23	13031	13128	-97	JUN 23	38798	38569	229
JUL 23	11001	10928	73	JUL 23	38594	38439	155
AUG 23	7850	7771	79	AUG 23	38324	38070	255
SEP 23	10963	10853	110	SEP 23	37667	37533	135
OCT 23	19591	19749	-158	OCT 23	41860	41765	95
NOV 23	9895	9873	22	NOV 23	40236	40181	55
DEC 23	13615	13448	167	DEC 23	35033	34983	50
JAN 24	13266	12914	352	JAN 24	28181	28176	5
FEB 24	3239	3238	1	FEB 24	19696	19632	63
MAR 24	12736	12601	135	MAR 24	25545	25478	67
APR 24	6667	6736	-69	APR 24	19119	18945	174
MAY 24	2288	2288	0	MAY 24	18360	18354	6
JUN 24	1099	1119	-20	JUN 24	18303	18296	7
JUL 24	887	862	25	JUL 24	18995	18960	36
AUG 24	989	998	-9	AUG 24	18846	18772	74





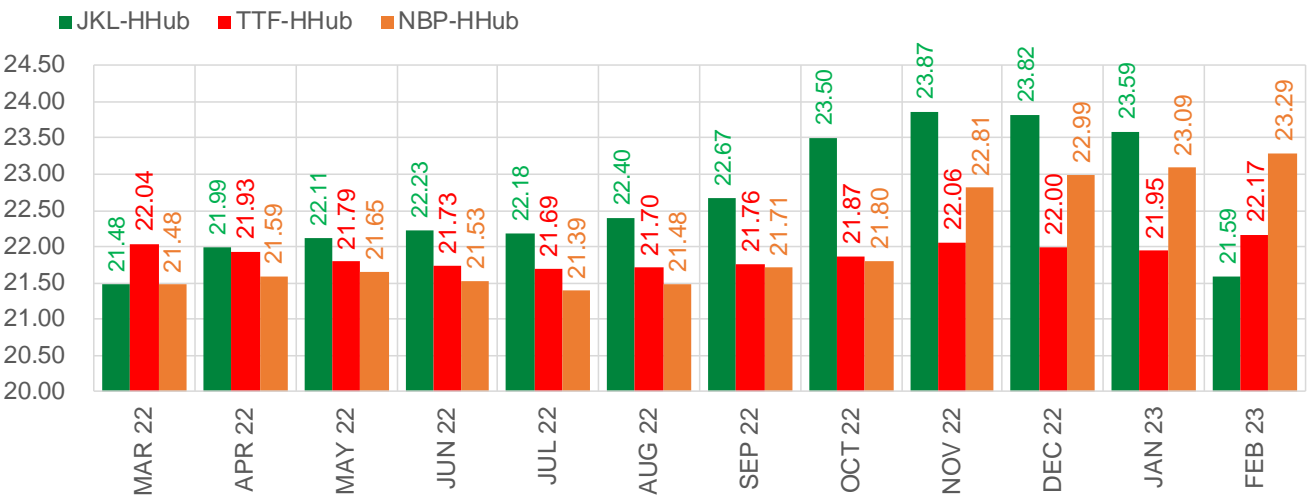
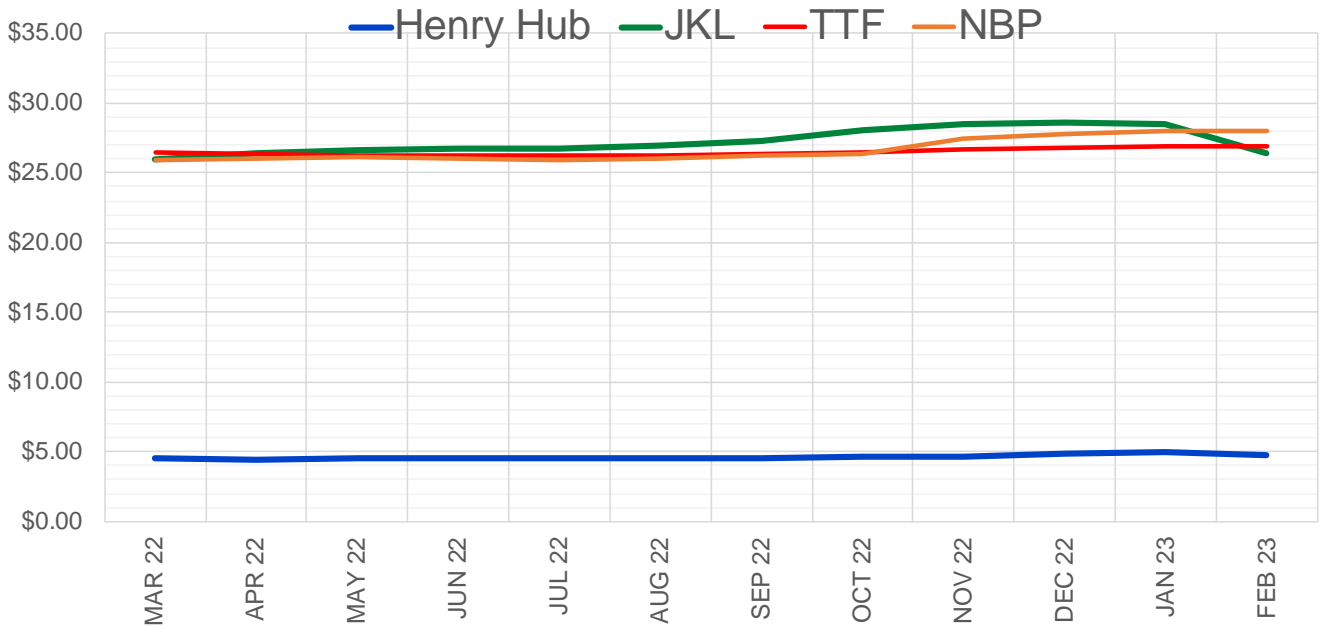
	Mar-22	Apr-22	May-22	Jun-22	Jul-22	Aug-22	Sep-22	Oct-22	Nov-22	Dec-22	Jan-23	Feb-23
Current Price	\$4.431	\$4.377	\$4.398	\$4.443	\$4.496	\$4.505	\$4.488	\$4.510	\$4.600	\$4.753	\$4.851	\$4.687
Last Week	\$4.195	\$4.160	\$4.189	\$4.238	\$4.290	\$4.300	\$4.282	\$4.304	\$4.400	\$4.569	\$4.675	\$4.535
vs. Last Week	\$0.236	\$0.217	\$0.209	\$0.205	\$0.206	\$0.205	\$0.206	\$0.206	\$0.200	\$0.184	\$0.176	\$0.152
4 Weeks Ago	\$4.027	\$3.875	\$3.842	\$3.876	\$3.925	\$3.981	\$3.993	\$3.975	\$3.999	\$4.086	\$4.252	\$4.347
vs. 4 Weeks Ago	\$0.404	\$0.502	\$0.556	\$0.567	\$0.571	\$0.524	\$0.495	\$0.535	\$0.601	\$0.667	\$0.599	\$0.340
Last Year	\$2.953	\$2.936	\$2.960	\$3.007	\$3.056	\$3.068	\$3.055	\$3.064	\$3.115	\$3.239	\$3.333	\$3.261
vs. Last Year	\$1.478	\$1.441	\$1.438	\$1.436	\$1.440	\$1.437	\$1.433	\$1.446	\$1.485	\$1.514	\$1.518	\$1.426

	Units	Cash Settled	Prompt Settle	Cash to Prompt
AGT Citygate	\$/MMBtu	4.69	8.50	3.81
TETCO M3	\$/MMBtu	3.99	4.23	0.24
FGT Zone 3	\$/MMBtu	4.78	4.51	-0.28
Zone 6 NY	\$/MMBtu	4.78	4.52	-0.26
Chicago Citygate	\$/MMBtu	4.59	4.28	-0.31
Michcon	\$/MMBtu	4.45	4.25	-0.20
Columbia TCO Pool	\$/MMBtu	3.98	3.86	-0.12
Ventura	\$/MMBtu	4.44	4.36	-0.08
Rockies/Opal	\$/MMBtu	4.32	3.94	-0.38
El Paso Permian Basin	\$/MMBtu	4.33	3.79	-0.54
Socal Citygate	\$/MMBtu	5.08	4.11	-0.98
Malin	\$/MMBtu	4.88	4.03	-0.85
Houston Ship Channel	\$/MMBtu	4.24	4.23	-0.01
Henry Hub Cash	\$/MMBtu	4.48	4.18	-0.31
AECO Cash	C\$/GJ	4.18	3.73	-0.45
Station2 Cash	C\$/GJ	4.14	3.87	-0.27
Dawn Cash	C\$/GJ	4.44	4.36	-0.08

Source: CME, Bloomberg

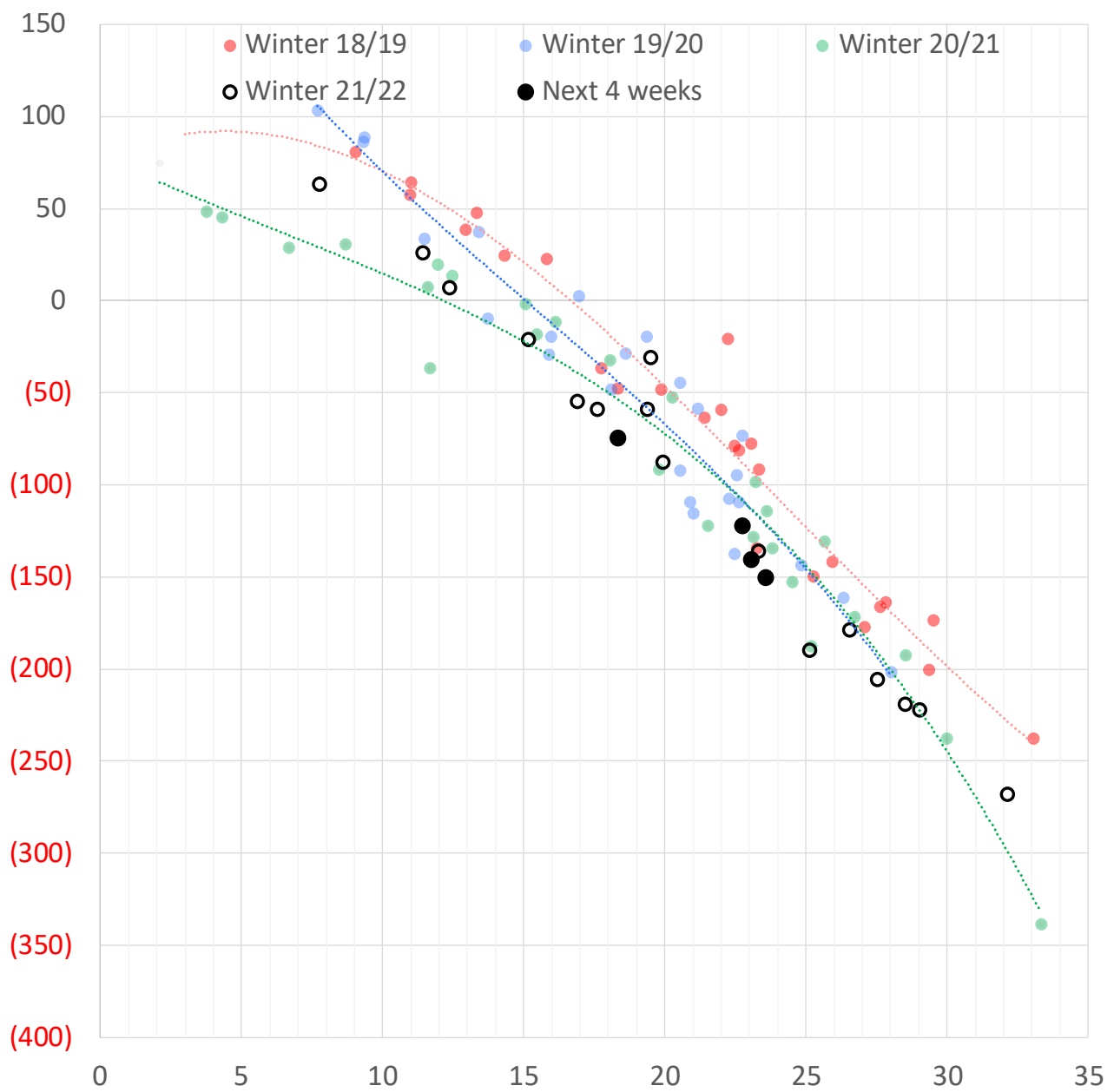
	Units	Current Price	vs. Last Week	vs. 4 Weeks Ago	vs. Last Year
NatGas Jul21/Oct21	\$/MMBtu	2.224	▲ 0.000	▲ 0.000	▲ 2.210
NatGas Oct21/Nov21	\$/MMBtu	0.361	▲ 0.000	▲ 0.000	▲ 0.306
NatGas Oct21/Jan22	\$/MMBtu	-1.817	▲ 0.000	▲ 0.000	▼ -2.093
NatGas Apr22/Oct22	\$/MMBtu	0.128	▼ -0.009	▼ -0.033	▲ 0.097
WTI Crude	\$/Bbl	92.35	▲ 0.280	▲ 6.750	▲ 30.680
Brent Crude	\$/Bbl	96.84	▲ 3.560	▲ 8.640	▲ 31.470
Fuel Oil, NY Harbour 1%	\$/Bbl	97.18	▲ 0.000	▲ 0.000	▲ 0.000
Heating Oil	cents/Gallon	281.88	▼ -4.070	▲ 14.970	▲ 95.080
Propane, Mt. Bel	cents/Gallon	1.32	▲ 0.074	▲ 0.170	▲ 0.408
Ethane, Mt. Bel	cents/Gallon	0.40	▲ 0.009	▲ 0.028	▲ 0.131
Coal, PRB	\$/MTon	12.30	▲ 0.000	▲ 0.000	▲ 0.000
Coal, PRB	\$/MMBtu	0.70			
Coal, ILB	\$/MTon	31.05	▲ 0.000	▲ 0.000	▲ 0.000
Coal, ILB	\$/MMBtu	1.32			

Nat Gas Term Structure (\$MMBTU)



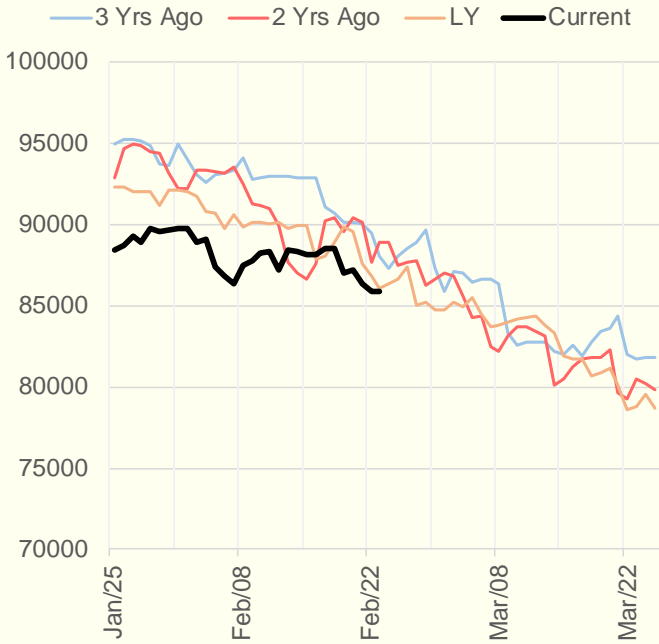
	MAR 22	APR 22	MAY 22	JUN 22	JUL 22	AUG 22	SEP 22	OCT 22	NOV 22	DEC 22	JAN 23	FEB 23
Henry Hub	\$4.482	\$4.478	\$4.496	\$4.538	\$4.583	\$4.589	\$4.588	\$4.600	\$4.684	\$4.849	\$4.952	\$4.778
JKL	\$25.960	\$26.465	\$26.610	\$26.765	\$26.760	\$26.990	\$27.255	\$28.100	\$28.550	\$28.665	\$28.540	\$26.365
JKL-HHub	\$21.478	\$21.987	\$22.114	\$22.227	\$22.177	\$22.401	\$22.667	\$23.500	\$23.866	\$23.816	\$23.588	\$21.587
TTF	\$26.525	\$26.411	\$26.286	\$26.269	\$26.277	\$26.293	\$26.350	\$26.465	\$26.744	\$26.850	\$26.897	\$26.949
TTF-HHub	\$22.043	\$21.933	\$21.790	\$21.731	\$21.694	\$21.704	\$21.762	\$21.865	\$22.060	\$22.001	\$21.945	\$22.171
NBP	\$25.958	\$26.066	\$26.144	\$26.063	\$25.977	\$26.070	\$26.295	\$26.400	\$27.493	\$27.839	\$28.039	\$28.065
NBP-HHub	\$21.476	\$21.588	\$21.648	\$21.525	\$21.394	\$21.481	\$21.707	\$21.800	\$22.809	\$22.990	\$23.087	\$23.287

Weather Storage Model - Next 4 Week Forecast

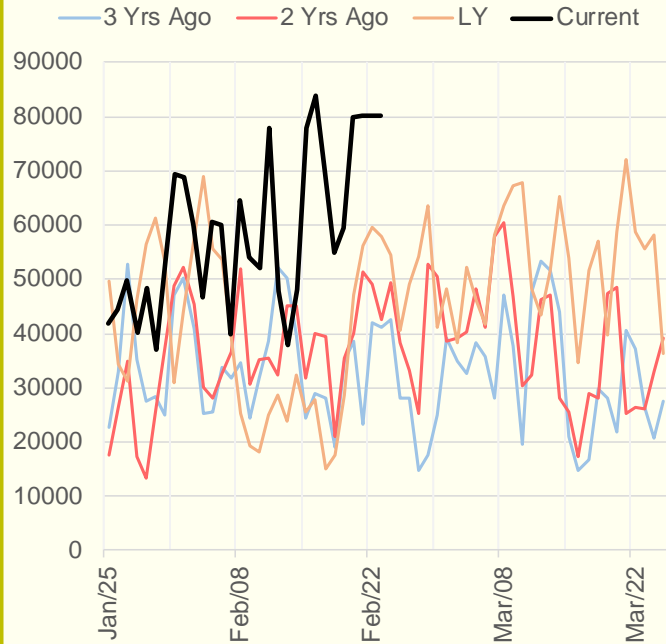


The risk of trading futures and options and other derivatives involves a substantial risk of loss and is not suitable for all persons. Each person must consider whether a particular trade, combination of trades, or strategy is suitable for that person's financial means and objectives. Past results are not necessarily indicative of future results. This communication may contain links to third party websites which are not under the control of and are not maintained by ION Energy Group, and ION Energy Group is not responsible for their content.

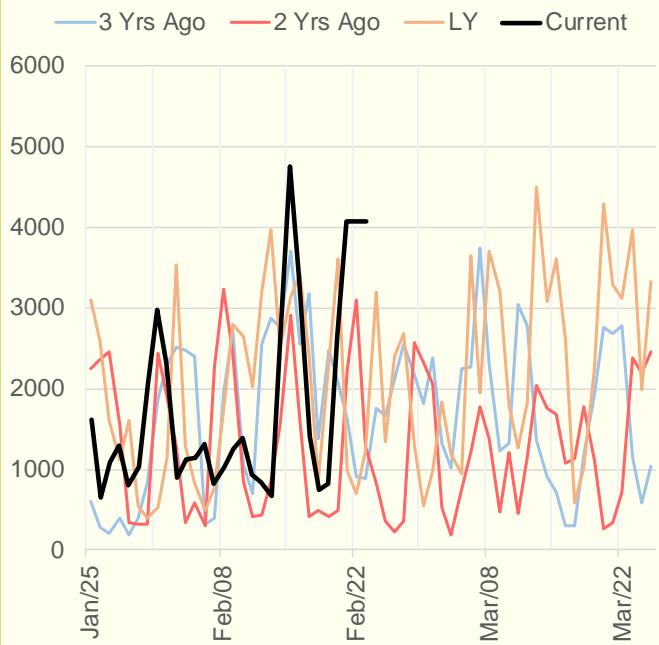
NRC Nuclear Daily Output



US Wind



CALI Wind



TEXAS Wind

