

	Current	Δ from YD	Δ from 7D Avg
Nat Gas Prompt	\$ 4.55 ▲	\$ 0.08 ▲	\$ 0.04

	Current	Δ from YD	Δ from 7D Avg
WTI Prompt	\$ 94.73 ▲	\$ 3.14 ▲	\$ 2.9

	Current	Δ from YD	Δ from 7D Avg
Brent Prompt	\$ 100.06 ▲	\$ 2.13 ▲	\$ 2.6

Page Menu

[Short-term Weather Model Outlooks](#)

[Lower 48 Component Models](#)

[Regional S/D Models Storage Projection](#)

[Weather Model Storage Projection](#)

[Supply – Demand Trends](#)

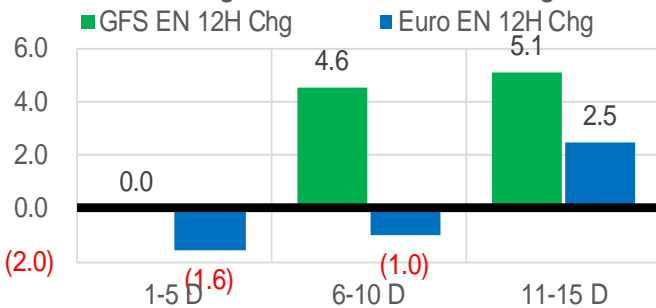
[Nat Gas Options Volume and Open Interest](#)

[Nat Gas Futures Open Interest](#)

[Price Summary](#)

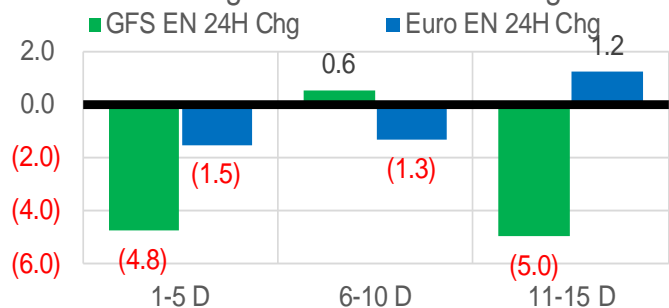
Vs. 12H Ago

L48 Region - 00z TDD vs 12H Ago



Vs. 24H Ago

L48 Region - 00z TDD vs 24H Ago



	Current	Δ from YD	Δ from 7D Avg
US Dry Production	94.1 ▼	-0.15 ▼	0.38 ▲

	Current	Δ from YD	Δ from 7D Avg
US Power Burns	28.9 ▼	-0.42 ▼	0.25 ▲

	Current	Δ from YD	Δ from 7D Avg
US ResComm	40.0 ▼	-0.82 ▼	-2.19 ▼

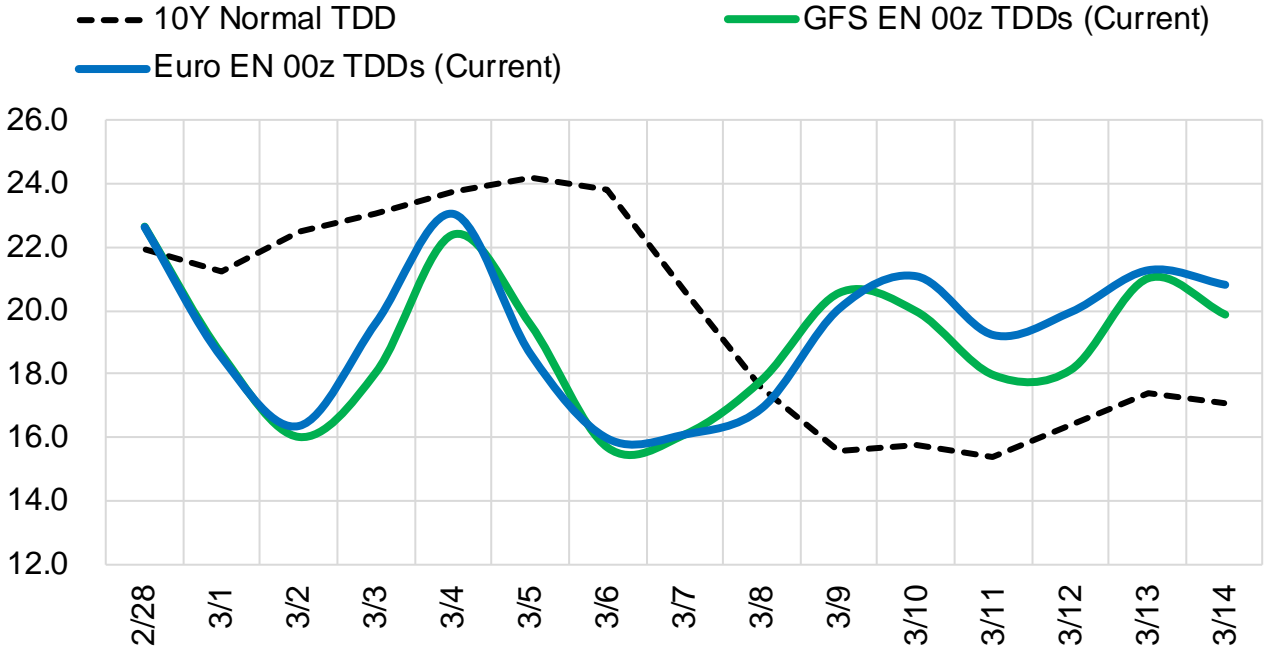
	Current	Δ from YD	Δ from 7D Avg
Canadian Imports	5.7 ▼	-0.04 ▼	-0.41 ▼

	Current	Δ from YD	Δ from 7D Avg
Net LNG Exports	12.6 ▼	-0.39 ▼	0.96 ▲

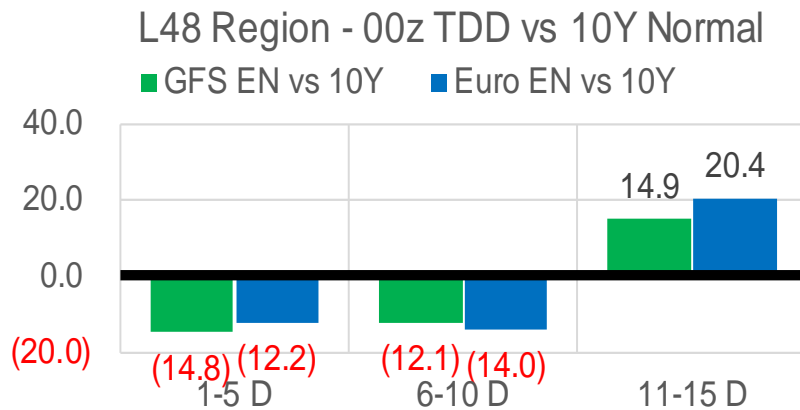
	Current	Δ from YD	Δ from 7D Avg
Mexican Exports	6.0 ▲	0.06 ▲	-0.31 ▼

Short-term Weather Model Outlooks (00z)

L48 Region



Vs. 10Y Normal



Source: WSI , Bloomberg

Lower 48 Component Models

Daily Balances

	22-Feb	23-Feb	24-Feb	25-Feb	26-Feb	27-Feb	28-Feb	DoD	vs. 7D
Lower 48 Dry Production	94.4	93.0	92.0	92.8	94.1	94.2	94.1	▼ -0.1	▲ 0.6
Canadian Imports	6.0	6.3	6.4	6.3	6.0	5.8	5.7	▼ 0.0	▼ -0.4
L48 Power	25.7	29.2	31.6	30.8	28.8	29.3	28.9	▼ -0.4	▼ -0.4
L48 Residential & Commercial	33.7	43.2	49.4	49.0	47.9	40.8	40.0	▼ -0.8	▼ -4.0
L48 Industrial	26.4	27.6	27.3	26.5	25.5	24.2	23.7	▼ -0.5	▼ -2.6
L48 Lease and Plant Fuel	5.2	5.1	5.0	5.1	5.1	5.1	5.1	▼ 0.0	▲ 0.0
L48 Pipeline Distribution	2.8	3.4	3.8	3.8	3.6	3.3	3.3	▼ -0.1	▼ -0.2
L48 Regional Gas Consumption	93.8	108.5	117.1	115.2	111.1	102.7	100.9	▼ -1.8	▼ -7.2
Net LNG Delivered	10.36	10.89	11.50	12.16	13.14	13.03	12.78	▼ -0.2	▲ 0.9
Total Mexican Exports	6.1	6.4	6.5	6.9	6.4	6.0	6.0	▲ 0.1	▼ -0.4
Implied Daily Storage Activity	-9.9	-26.5	-36.7	-35.2	-30.5	-21.8	-19.9		
EIA Reported Daily Storage Activity									
Daily Model Error									

EIA Storage Week Balances

	21-Jan	28-Jan	4-Feb	11-Feb	18-Feb	25-Feb	WoW	vs. 4W
Lower 48 Dry Production	94.2	94.0	93.9	91.6	95.6	94.2	▼ -1.3	▲ 0.5
Canadian Imports	7.0	7.1	7.1	7.1	6.2	6.3	▲ 0.0	▼ -0.6
L48 Power	30.3	32.1	29.8	29.4	26.8	27.1	▲ 0.3	▼ -2.4
L48 Residential & Commercial	47.1	52.8	48.2	45.0	39.6	40.7	▲ 1.1	▼ -5.7
L48 Industrial	28.0	27.6	28.2	25.4	26.9	27.2	▲ 0.3	▲ 0.2
L48 Lease and Plant Fuel	5.2	5.2	5.2	5.0	5.2	5.1	▼ -0.1	▲ 0.0
L48 Pipeline Distribution	3.8	4.1	3.7	3.5	3.1	3.2	▲ 0.1	▼ -0.4
L48 Regional Gas Consumption	114.3	121.7	115.1	108.4	101.7	103.4	▲ 1.8	▼ -8.3
Net LNG Exports	12.9	12.5	12.1	12.4	13.0	11.7	▼ -1.3	▼ -0.8
Total Mexican Exports	6.4	6.5	6.4	6.1	6.0	6.1	▲ 0.0	▼ -0.2
Implied Daily Storage Activity	-32.4	-39.5	-32.6	-28.3	-18.9	-20.7	-1.8	
EIA Reported Daily Storage Activity	-31.3	-38.3	-31.7	-27.1	-18.4			
Daily Model Error	-1.2	-1.2	-0.9	-1.1	-0.5			

Monthly Balances

	2Yr Ago Feb-20	LY Feb-21	Oct-21	Nov-21	Dec-21	Jan-22	MTD Feb-22	MoM	vs. LY
Lower 48 Dry Production	94.2	84.3	94.3	95.6	96.5	94.4	93.5	▼ -0.9	▲ 9.2
Canadian Imports	5.3	6.4	5.4	5.3	4.8	6.7	6.6	▼ -0.2	▲ 0.2
L48 Power	30.2	27.6	30.5	29.1	28.4	30.8	28.1	▼ -2.6	▲ 0.5
L48 Residential & Commercial	40.6	48.1	12.4	27.1	32.6	48.3	42.5	▼ -5.8	▼ -5.5
L48 Industrial	25.1	21.1	21.1	24.3	25.1	27.7	26.5	▼ -1.1	▲ 5.5
L48 Lease and Plant Fuel	5.1	4.6	5.2	5.2	5.3	5.2	5.1	▼ -0.1	▲ 0.5
L48 Pipeline Distribution	3.5	3.6	2.4	2.9	3.0	3.8	3.3	▼ -0.5	▼ -0.2
L48 Regional Gas Consumption	104.5	104.9	71.6	88.7	94.4	115.8	105.7	▼ -10.1	▲ 0.7
Net LNG Exports	8.5	8.4	10.6	11.4	12.1	12.4	12.4	▲ 0.0	▲ 4.0
Total Mexican Exports	5.2	5.7	6.6	6.1	6.2	6.3	6.2	▼ -0.2	▲ 0.4
Implied Daily Storage Activity	-18.7	-28.4	10.9	-5.3	-11.4	-33.4	-24.1		
EIA Reported Daily Storage Activity									
Daily Model Error									

Source: Bloomberg, analytix.ai

Daily Average Generation Data

Nuclear Generation Daily Average - GWh (NRC)

	20-Feb	21-Feb	22-Feb	23-Feb	24-Feb	25-Feb	26-Feb	DoD	vs. 7D
NRC Nuclear Daily Output	87.3	86.3	85.9	86.6	86.5	86.5	86.5	0.0	0.0
NRC Nuclear Max Capacity	104.9	104.9	104.9	104.9	104.9	104.9	104.9	0.0	0.0
NRC Nuclear Outage	17.6	18.5	19.0	18.3	18.4	18.3	18.3	0.0	0.0
NRC % Nuclear Cap Utilization	88.7	87.8	87.3	88.0	88.0	88.0	88.0	0.0	0.0

Wind Generation Daily Average - MWh (EIA)

	20-Feb	21-Feb	22-Feb	23-Feb	24-Feb	25-Feb	26-Feb	DoD	vs. 7D
CALI Wind	2653	4085	3469	3049	997	675	779	103	-1709
TEXAS Wind	19456	21112	18395	13541	2951	7249	3272	-3977	-10512
US Wind	79854	80104	75655	50792	22996	26549	35987	9438	-20005

Generation Daily Average - MWh (EIA)

	20-Feb	21-Feb	22-Feb	23-Feb	24-Feb	25-Feb	26-Feb	DoD	vs. 7D
US Wind	79854	80104	75655	50792	22996	26549	35987	9438	-20005
US Solar	14283	10114	10115	9533	10897	13237	12250	-987	887
US Petroleum	2148	2043	2528	4100	4473	4362	2786	-1576	-490
US Other	7728	8160	7690	7945	8752	8844	7737	-1107	-450
US Coal	86286	89185	94575	107463	118924	120059	108059	-12000	5310
US Nuke	92105	91125	90502	90894	91156	91123	90550	-572	-600
US Hydro	32181	33200	33577	33449	33425	33734	31591	-2143	-1670
US Gas	119560	119207	127391	165288	197780	188625	172814	-15812	19839

See National Wind and Nuclear daily charts

Source: Bloomberg, analytix.ai

Storage Week Average Generation Data

Nuclear Generation Weekly Average - GWh (NRC)

	21-Jan	28-Jan	4-Feb	11-Feb	18-Feb	25-Feb	WoW	WoW Bcf/d Impact
NRC Nuclear Daily Output	89.7	89.7	89.5	87.6	88.2	86.9	-1.3	0.2
NRC Nuclear Max Capacity	104.9	104.9	104.9	104.9	104.9	104.9	0.0	
NRC Nuclear Outage	15.1	15.2	15.4	17.3	16.7	18.0	1.3	
NRC % Nuclear Cap Utilization	91.2	0.1	0.1	0.1	0.1	0.1	0.0	

Wind Generation Weekly Average - MWh (EIA)

	21-Jan	28-Jan	4-Feb	11-Feb	18-Feb	25-Feb	WoW	WoW Bcf/d Impact
CALI Wind	1273	1580	1627	1156	2105	2261	156	0.0
TEXAS Wind	15630	7185	12223	9259	16874	13068	-3806	0.7
US Wind	55686	45244	53914	53944	63319	60528	-2791	0.5
					9375.5		1.1	
					17%		0.8	
							1.0	

Generation Weekly Average - MWh (EIA)

	21-Jan	28-Jan	4-Feb	11-Feb	18-Feb	25-Feb	WoW	WoW Bcf/d Impact
						est.		
US Wind	55686	45244	53914	53944	63319	60528	-2791	0.5
US Solar	8609	10087	10457	12288	12315	11891	-424	0.1
US Petroleum	5260	5993	4672	3554	4126	2961	-1166	0.2
US Other	8109	9663	9656	9374	9139	8020	-1119	0.2
US Coal	117880	130576	124851	113847	101772	99951	-1821	0.3
US Nuke	94657	94693	94661	92640	92758	91458	-1300	0.2
US Hydro	34490	34137	31808	32213	31956	33214	1258	-0.2
US Gas	156870	177834	159397	162271	137937	146796	8859	

See National Wind and Nuclear daily charts

Source: Bloomberg, analytix.ai

Monthly Average Generation Data

Nuclear Generation Monthly Average - GWh (NRC)

	2Yr Ago		LY		MTD		Last 30 days	MoM (MTD vs LY)	Last 30 days YoY
	Same 30 days	Same 30 days	Nov-21	Dec-21	Jan-22	Feb-22			
	NRC Nuclear Daily Output	90.3	89.2	82.8	90.3	90.2			
NRC Nuclear Max Capacity	104.9	104.9	104.9	104.9	104.9	104.9	104.9	0.0	0.0
NRC Nuclear Outage	14.6	15.6	22.0	14.6	14.7	17.3	17.1	2.6	1.5
NRC % Nuclear Cap Utilization	91.8	90.7	84.2	91.8	91.7	89.1	89.2	-2.6	-1.5

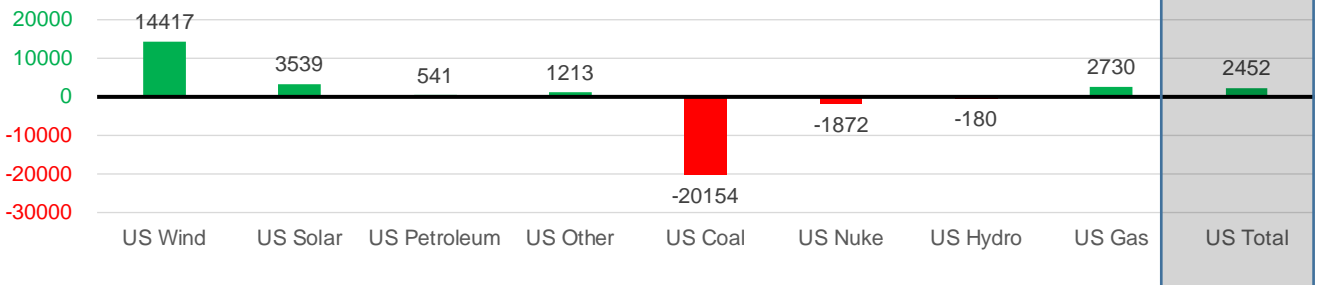
Wind Generation Monthly Average - MWh (EIA)

	2Yr Ago		LY		MTD		Last 30 days	MoM (MTD vs LY)	Last 30 days YoY
	Same 30 days	Same 30 days	Nov-21	Dec-21	Jan-22	Feb-22			
	CALI Wind	1226	1936	1224	1585	1364			
TEXAS Wind	10193	9346	11678	12927	11355	12051	11909	696	2563
US Wind	38769	41178	49838	54810	51165	56328	55594	5163	14417

Generation Monthly Average - MWh (EIA)

	2Yr Ago		LY		MTD		Last 30 days	MoM (MTD vs LY)	Last 30 days YoY
	Same 30 days	Same 30 days	Nov-21	Dec-21	Jan-22	Feb-22			
	US Wind	38769	41178	49838	54810	51165			
US Solar	6742	8395	9688	7376	9476	11964	11934	▼ -30.3	▲ 3539
US Petroleum	3321	3092	3022	3135	5021	3444	3633	▲ 189	▲ 541
US Other	6750	7628	8445	8222	8792	8765	8840	▲ 75	▲ 1213
US Coal	78683	128744	80906	81617	118026	107007	108590	▲ 1583	▼ -20154
US Nuke	91147	94331	87558	95449	95259	92284	92459	▲ 176	▼ -1872
US Hydro	36327	32395	26649	30826	34109	32279	32215	▼ -65	▼ -180
US Gas	165535	150934	151991	152627	164026	153314	153664	▲ 1194	▲ 2730
US Total	426375	464956	418455	434177	485998	465842	467408	▲ 3122	▲ 2452

Last 30 days YoY



See National Wind and Nuclear daily charts

Source: Bloomberg, analytix.ai

Regional S/D Models Storage Projection

Week Ending 25-Feb

	Daily Raw Storage	Daily Adjustment Factor	Daily Average Storage Activity (Adjusted) *	Weekly Adjusted Storage Activity
L48	-20.6	0.7	-19.9	-139
East	-6.9	2.3	-4.6	-32
Midwest	-6.8	-0.3	-7.1	-49
Mountain	2.4	-3.4	-1.1	-7
South Central	-8.2	2.9	-5.3	-37
Pacific	-1.2	-0.7	-1.9	-13

*Adjustment Factor is calculated based on historical regional deltas

U.S. underground natural gas storage facilities by type (July 2015)

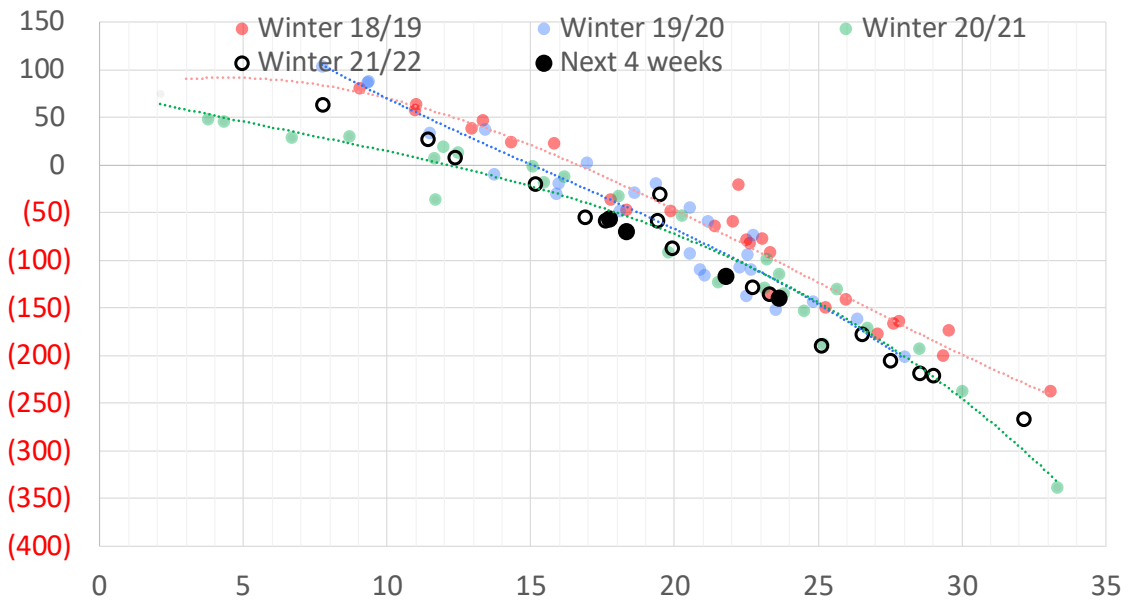


Weather Model Storage Projection

Next report
and beyond

Week Ending	GWDDs	Week Storage Projection
25-Feb	24	-139
04-Mar	22	-116
11-Mar	18	-69
18-Mar	18	-56

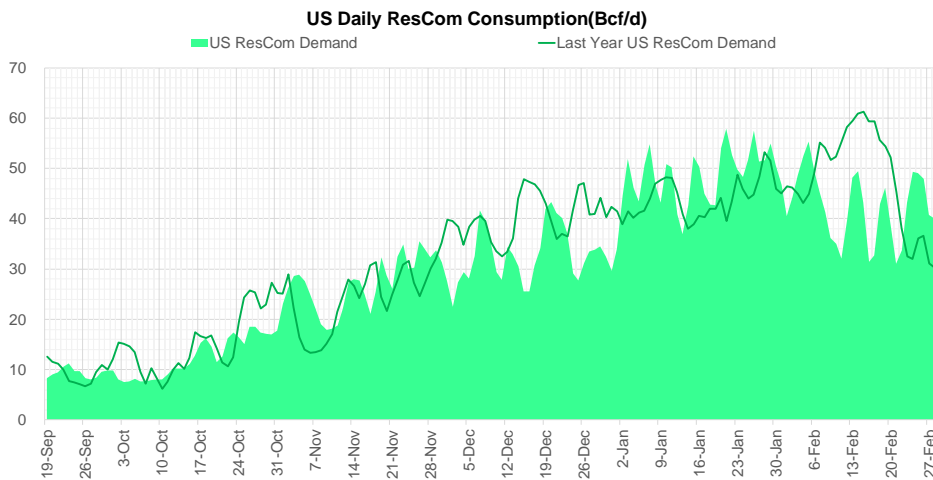
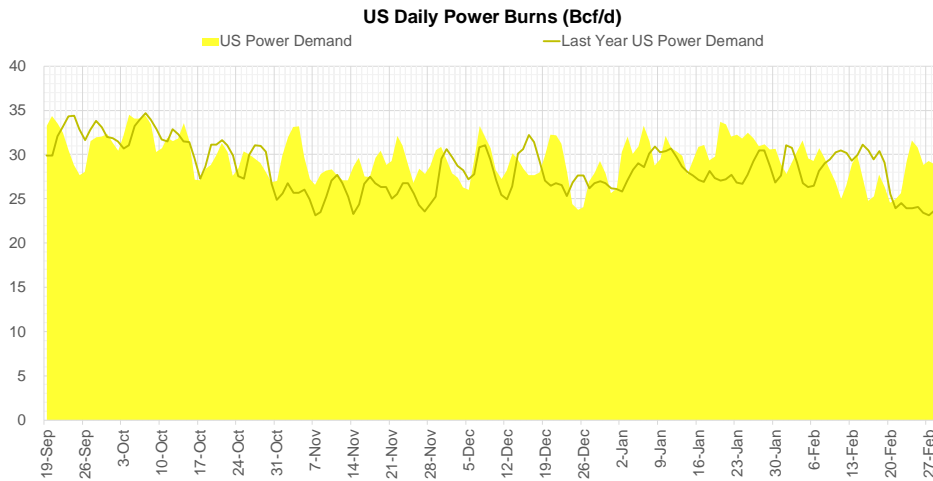
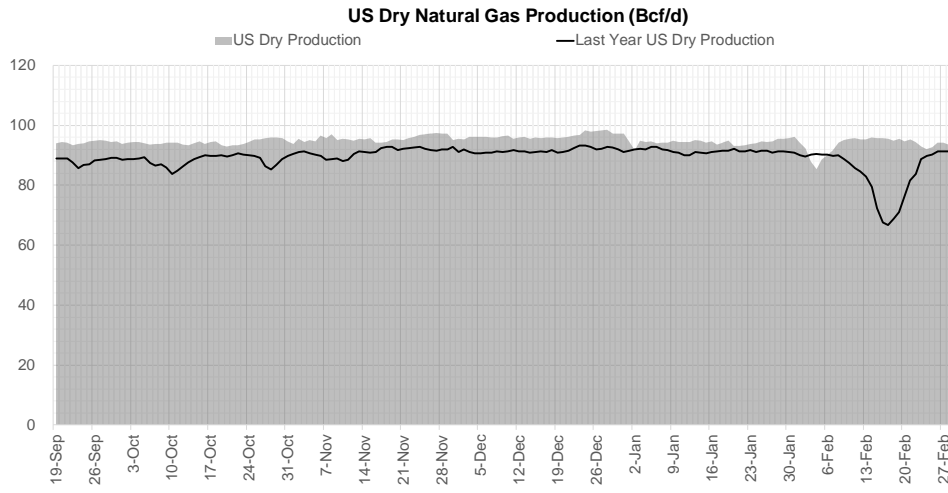
Weather Storage Model - Next 4 Week Forecast



Go to larger image



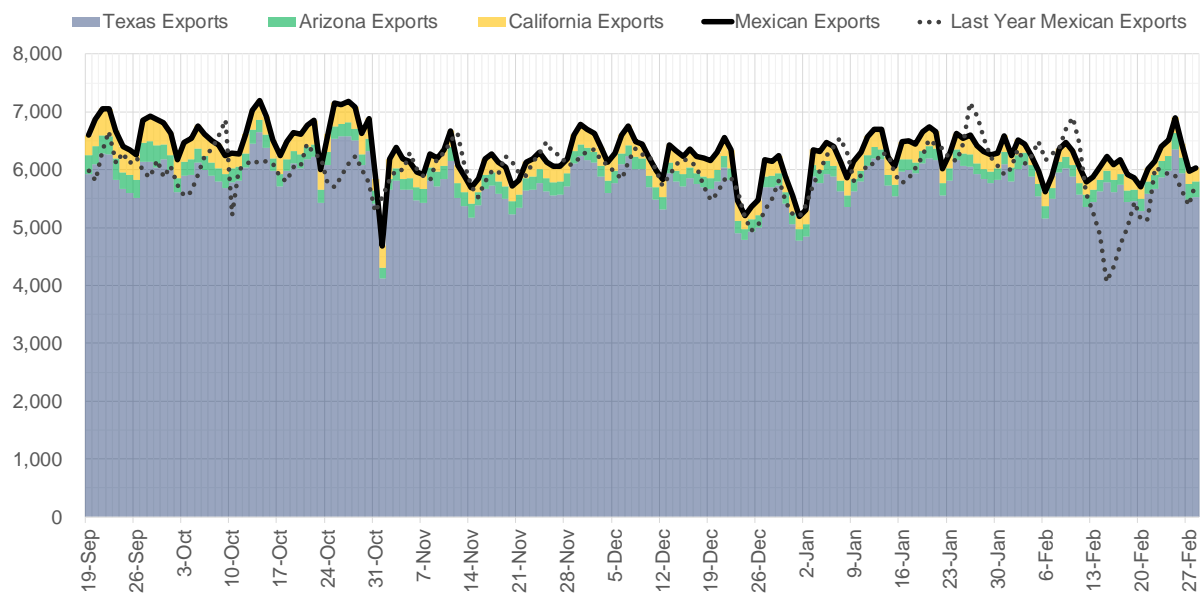
Supply – Demand Trends



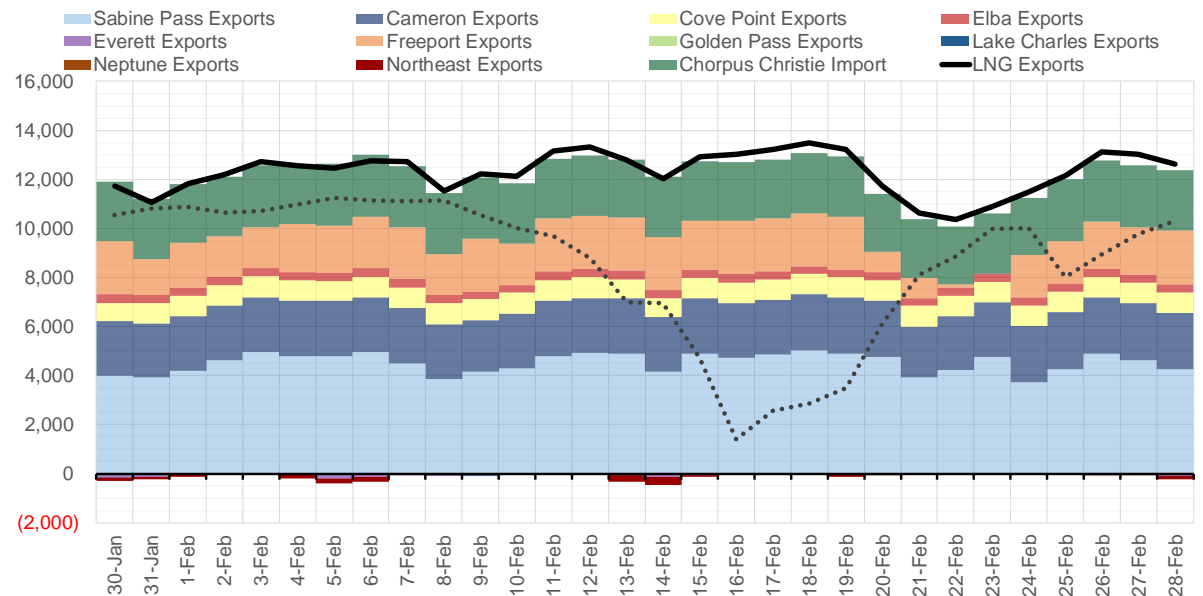
Source: Bloomberg

The risk of trading futures and options and other derivatives involves a substantial risk of loss and is not suitable for all persons. Each person must consider whether a particular trade, combination of trades, or strategy is suitable for that person's financial means and objectives. Past results are not necessarily indicative of future results. This communication may contain links to third party websites which are not under the control of and are not maintained by ION Energy Group, and ION Energy Group is not responsible for their content.

Mexican Exports (MMcf/d)



Net LNG Exports - Last 30 days (MMcf/d)



Source: Bloomberg

The risk of trading futures and options and other derivatives involves a substantial risk of loss and is not suitable for all persons. Each person must consider whether a particular trade, combination of trades, or strategy is suitable for that person's financial means and objectives. Past results are not necessarily indicative of future results. This communication may contain links to third party websites which are not under the control of and are not maintained by ION Energy Group, and ION Energy Group is not responsible for their content.

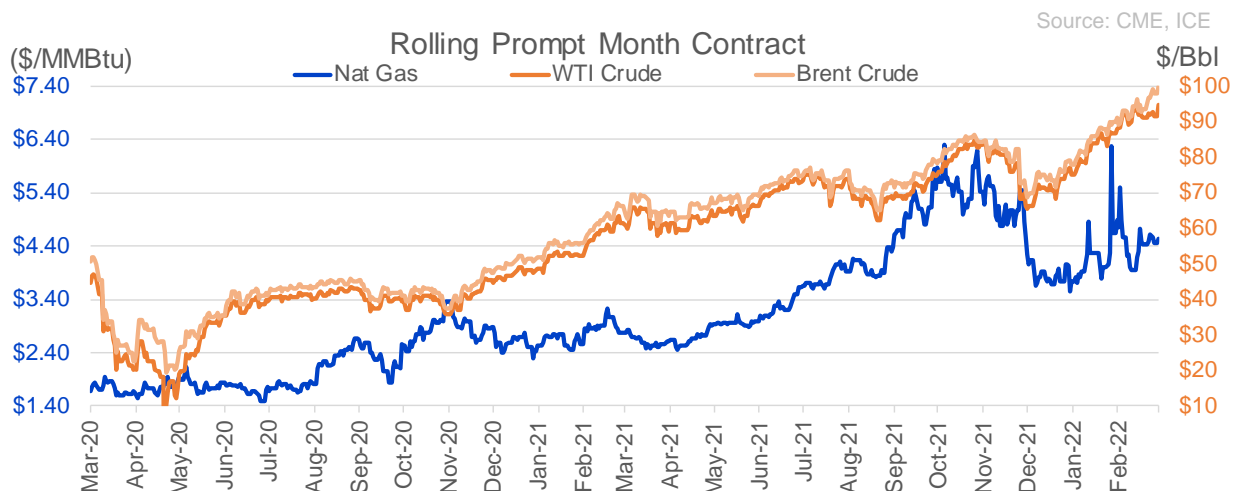
Nat Gas Options Volume and Open Interest CME and ICE Combined

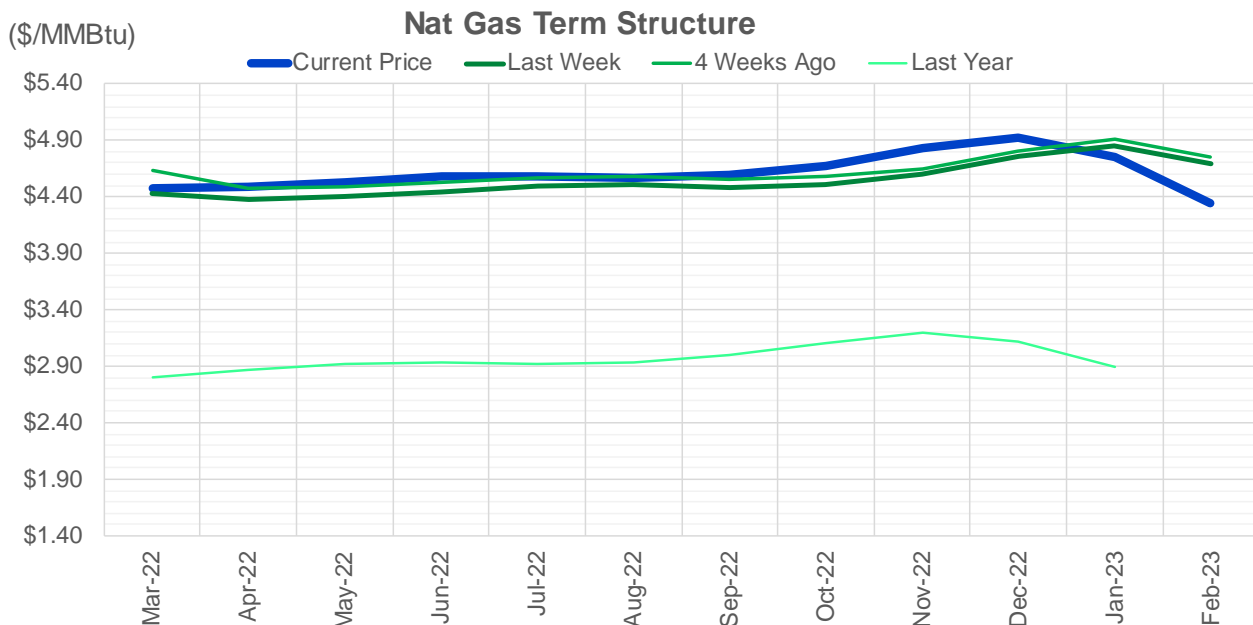
CONTRACT MONTH	CONTRACT YEAR	PUT/CALL	STRIKE	CUMULATIVE VOL	CONTRACT MONTH	CONTRACT YEAR	PUT/CALL	STRIKE	CUMULATIVE OI
4	2022	P	4.00	6823	4	2022	P	3.50	30768
4	2022	P	3.75	4230	4	2022	P	3.00	30304
4	2022	P	3.50	3722	10	2022	C	6.00	28214
4	2022	C	4.75	3386	4	2022	C	5.00	24860
4	2022	P	4.25	3105	10	2022	C	5.00	23660
4	2022	P	3.00	2611	5	2022	P	3.00	22416
10	2022	P	3.50	2501	4	2022	C	6.00	22071
9	2022	P	2.50	2500	6	2022	C	6.00	21866
9	2022	P	2.75	2500	5	2022	C	5.00	21743
4	2022	C	5.50	2105	4	2022	P	3.75	20336
8	2022	C	6.00	2100	5	2022	P	2.50	19877
8	2022	C	7.00	2100	5	2022	C	6.00	18912
4	2022	C	5.25	1924	4	2022	C	4.50	18422
4	2022	C	5.00	1737	6	2022	C	5.00	18349
10	2022	C	7.00	1650	10	2022	P	3.00	18280
4	2022	P	4.50	1526	6	2022	P	3.00	17949
5	2022	P	4.00	1465	4	2022	C	5.50	17633
4	2022	C	6.00	1434	4	2022	P	4.00	17632
5	2022	C	8.00	1319	9	2022	C	6.00	17565
5	2022	C	5.00	1317	4	2022	C	3.00	17511
6	2022	P	4.00	1279	5	2022	P	2.75	17339
5	2022	P	3.75	1257	12	2022	C	5.00	17286
5	2022	C	6.00	1155	4	2022	P	2.50	17186
4	2022	C	4.50	1099	7	2022	C	6.00	16717
5	2022	C	5.50	845	7	2022	P	3.25	16636
1	2023	C	6.00	750	4	2022	C	4.75	15306
5	2022	P	3.50	707	4	2022	C	8.00	15291
4	2022	P	4.40	701	8	2022	C	6.00	15207
2	2023	C	6.00	650	10	2022	C	7.00	15136
3	2023	C	6.00	650	8	2022	P	3.00	14941
4	2022	C	4.80	647	4	2022	P	3.25	14838
5	2022	C	7.00	640	7	2022	P	3.00	14784
5	2022	P	4.50	639	1	2023	C	5.00	14404
6	2022	C	5.00	621	7	2022	C	5.00	14286
7	2022	C	5.00	614	10	2022	P	2.00	14121
1	2023	C	5.00	600	6	2022	C	4.50	14112
2	2023	C	5.00	600	4	2022	C	7.00	14047
3	2023	C	5.00	600	9	2022	P	3.00	13823
4	2022	P	3.90	598	5	2022	C	3.00	13733
4	2022	P	3.95	524	12	2022	C	6.25	13593
5	2022	P	4.25	503	5	2022	C	4.00	13520
5	2022	C	4.50	497	6	2022	C	3.00	13438
8	2022	P	4.00	495	5	2022	C	7.00	13427
5	2022	P	4.10	468	4	2022	C	4.00	13401
5	2022	C	5.25	455	7	2022	C	3.00	13230
4	2022	C	6.50	399	8	2022	C	3.00	13226
4	2022	P	3.25	380	9	2022	C	3.00	13225
7	2022	P	3.75	377	5	2022	P	3.50	13207
7	2022	C	5.25	375	10	2022	P	3.50	13174
					10	2022	C	3	13114

Source: CME, ICE

Nat Gas Futures Open Interest CME and ICE Combined

CME Henry Hub Futures (10,000 MMBtu)				ICE Henry Hub Futures Contract Equivalent (10,000 MM			
	Current	Prior	Daily Change		Current	Prior	Daily Change
APR 22	145880	148671	-2791	APR 22	86208	85776	433
MAY 22	186087	184611	1476	MAY 22	81212	81272	-61
JUN 22	72230	72763	-533	JUN 22	72255	72049	206
JUL 22	85248	85193	55	JUL 22	66410	66592	-182
AUG 22	44315	44660	-345	AUG 22	61830	62033	-203
SEP 22	70654	69908	746	SEP 22	62972	63216	-244
OCT 22	83649	83656	-7	OCT 22	69692	69203	489
NOV 22	45711	43967	1744	NOV 22	55668	55678	-10
DEC 22	41979	41899	80	DEC 22	65534	65655	-121
JAN 23	61610	60877	733	JAN 23	59827	59540	287
FEB 23	22411	22743	-332	FEB 23	45628	45369	258
MAR 23	42913	43211	-298	MAR 23	49603	49194	409
APR 23	35103	34300	803	APR 23	47961	47894	68
MAY 23	22754	22023	731	MAY 23	42634	42259	375
JUN 23	12569	12879	-310	JUN 23	39308	39135	174
JUL 23	10491	10349	142	JUL 23	39086	38907	179
AUG 23	6891	7367	-476	AUG 23	39094	38752	342
SEP 23	10744	10831	-87	SEP 23	38158	37992	166
OCT 23	21116	21213	-97	OCT 23	42628	42180	448
NOV 23	10375	10454	-79	NOV 23	40597	40498	99
DEC 23	13883	13789	94	DEC 23	35368	35281	87
JAN 24	13708	13314	394	JAN 24	28428	28638	-210
FEB 24	3277	3239	38	FEB 24	19661	19705	-44
MAR 24	12987	13010	-23	MAR 24	25645	25683	-38
APR 24	6719	6731	-12	APR 24	19628	19536	93
MAY 24	2291	2288	3	MAY 24	18558	18523	35
JUN 24	1073	1099	-26	JUN 24	18405	18362	43
JUL 24	866	896	-30	JUL 24	19214	19178	36
AUG 24	985	1015	-30	AUG 24	18991	19016	-25
SEP 24	1142	0	1142	SEP 24	18582	18552	30





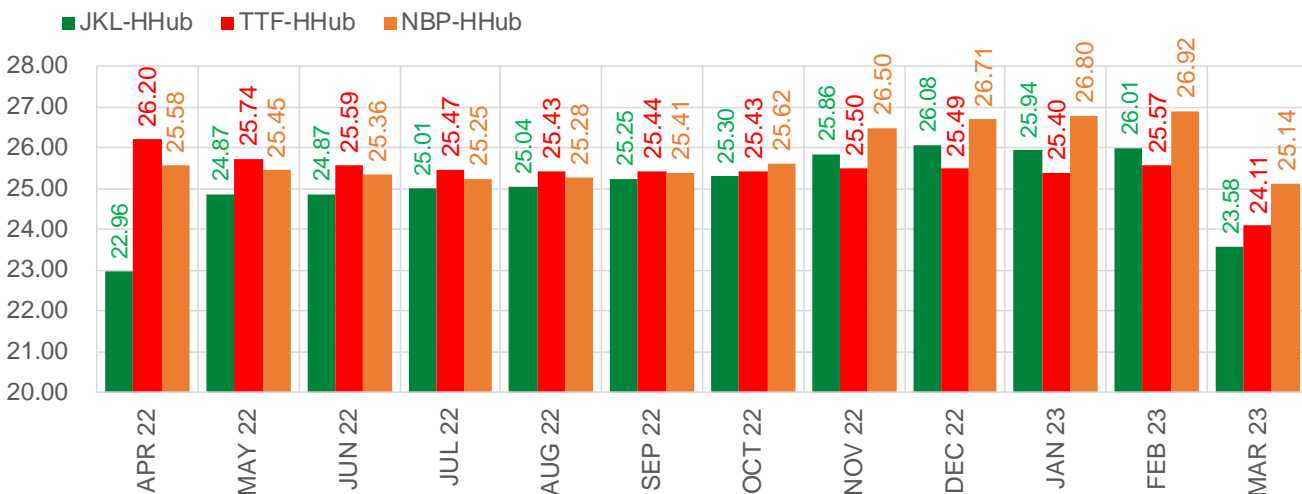
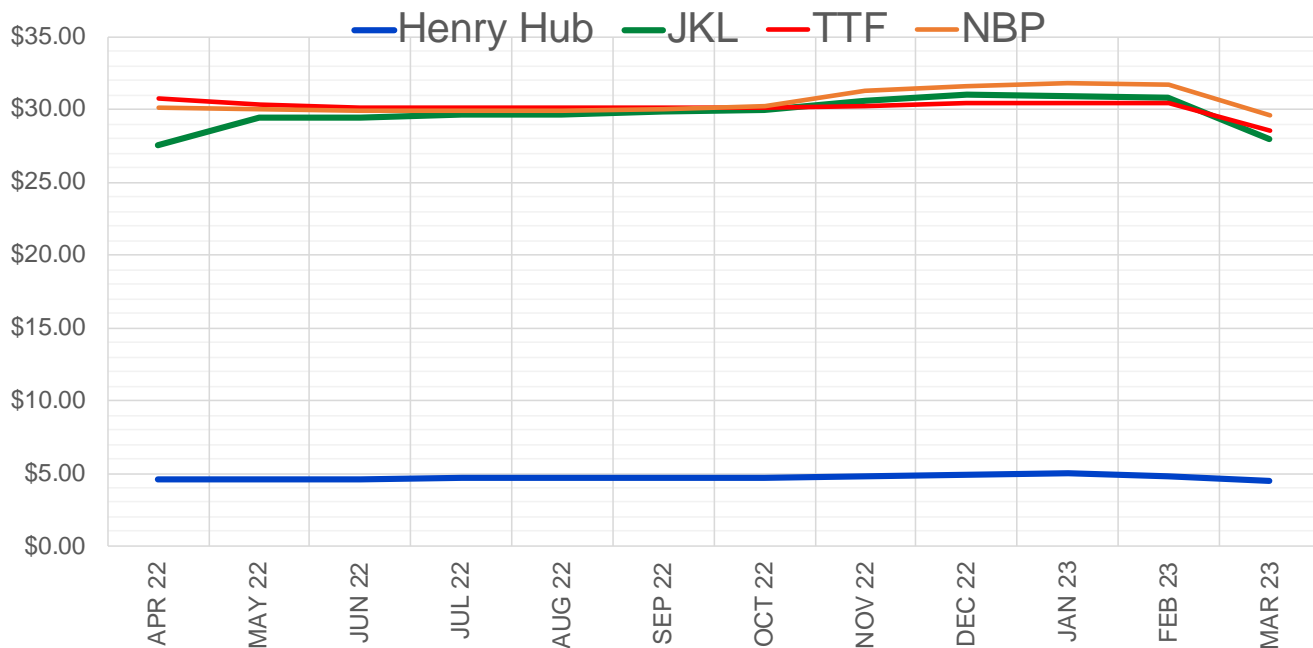
	Mar-22	Apr-22	May-22	Jun-22	Jul-22	Aug-22	Sep-22	Oct-22	Nov-22	Dec-22	Jan-23	Feb-23
Current Price	\$4.470	\$4.485	\$4.528	\$4.578	\$4.585	\$4.568	\$4.589	\$4.673	\$4.830	\$4.927	\$4.753	\$4.341
Last Week	\$4.431	\$4.377	\$4.398	\$4.443	\$4.496	\$4.505	\$4.488	\$4.510	\$4.600	\$4.753	\$4.851	\$4.687
vs. Last Week	\$0.039	\$0.108	\$0.130	\$0.135	\$0.089	\$0.063	\$0.101	\$0.163	\$0.230	\$0.174	-\$0.098	-\$0.346
4 Weeks Ago	\$4.639	\$4.473	\$4.485	\$4.523	\$4.568	\$4.575	\$4.553	\$4.575	\$4.649	\$4.810	\$4.910	\$4.749
vs. 4 Weeks Ago	-\$0.169	\$0.012	\$0.043	\$0.055	\$0.017	-\$0.007	\$0.036	\$0.098	\$0.181	\$0.117	-\$0.157	-\$0.408
Last Year	\$2.771	\$2.809	\$2.862	\$2.919	\$2.938	\$2.926	\$2.939	\$2.994	\$3.110	\$3.195	\$3.117	\$2.893
vs. Last Year	\$1.699	\$1.676	\$1.666	\$1.659	\$1.647	\$1.642	\$1.650	\$1.679	\$1.720	\$1.732	\$1.636	\$1.448

	Units	Cash Settled	Prompt Settle	Cash to Prompt
AGT Citygate	\$/MMBtu	4.69	9.24	4.55
TETCO M3	\$/MMBtu	5.73	4.29	-1.44
FGT Zone 3	\$/MMBtu	5.50	4.56	-0.94
Zone 6 NY	\$/MMBtu	5.50	4.40	-1.10
Chicago Citygate	\$/MMBtu	4.36	4.42	0.06
Michcon	\$/MMBtu	4.40	4.35	-0.05
Columbia TCO Pool	\$/MMBtu	4.24	3.92	-0.32
Ventura	\$/MMBtu	4.26	4.54	0.28
Rockies/Opal	\$/MMBtu	5.26	4.16	-1.10
El Paso Permian Basin	\$/MMBtu	4.25	3.88	-0.37
Socal Citygate	\$/MMBtu	4.73	4.24	-0.49
Malin	\$/MMBtu	4.35	4.14	-0.21
Houston Ship Channel	\$/MMBtu	4.34	4.25	-0.09
Henry Hub Cash	\$/MMBtu	4.54	4.23	-0.31
AECO Cash	C\$/GJ	3.83	3.44	-0.39
Station2 Cash	C\$/GJ	3.84	4.00	0.16
Dawn Cash	C\$/GJ	4.51	4.48	-0.03

Source: CME, Bloomberg

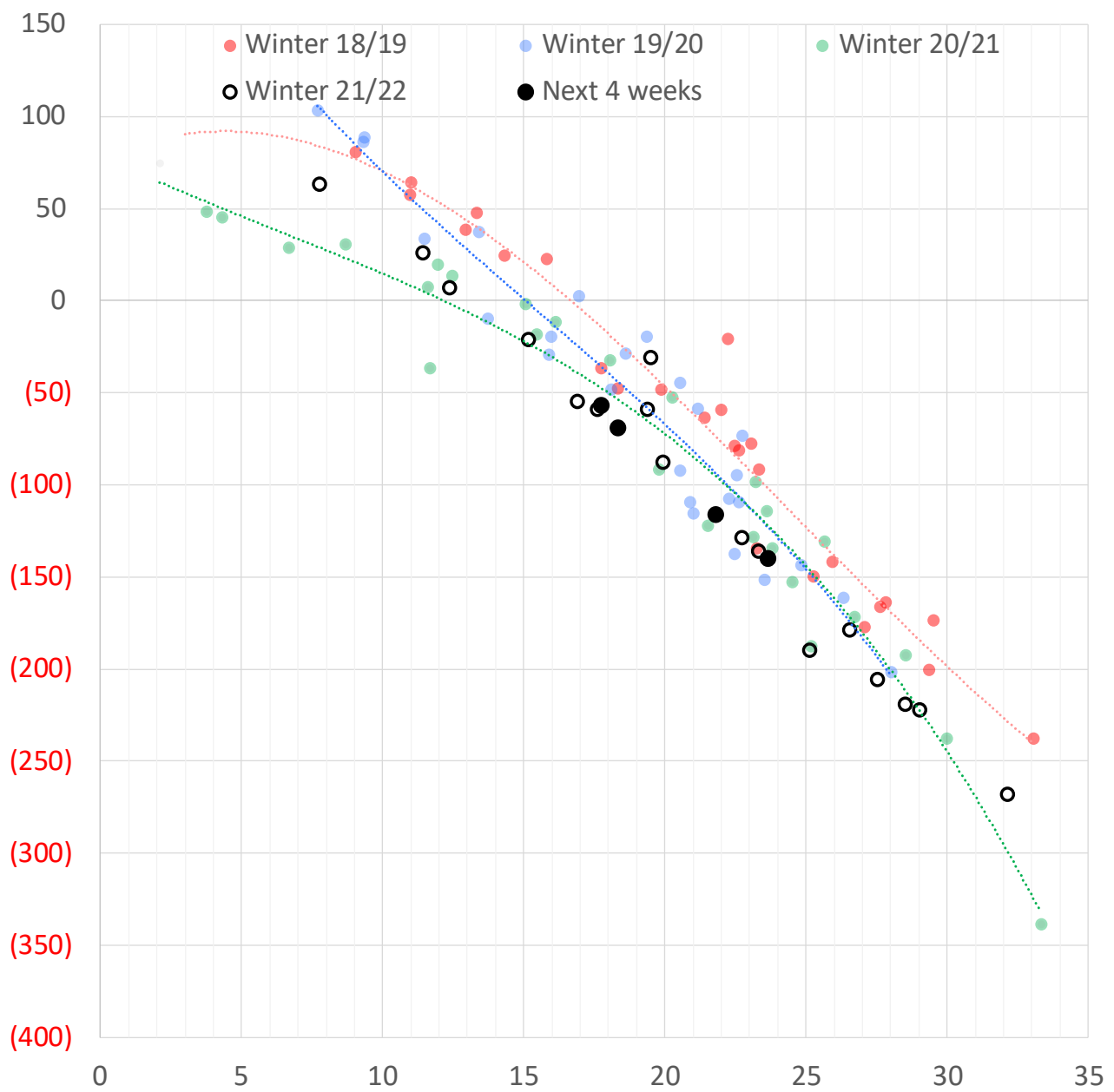
	Units	Current Price	vs. Last Week	vs. 4 Weeks Ago	vs. Last Year
NatGas Jul21/Oct21	\$/MMBtu	2.224	▲ 0.000	▲ 0.000	▲ 2.204
NatGas Oct21/Nov21	\$/MMBtu	0.361	▲ 0.000	▲ 0.000	▲ 0.306
NatGas Oct21/Jan22	\$/MMBtu	-1.817	▲ 0.000	▲ 0.000	▼ -2.073
NatGas Apr22/Oct22	\$/MMBtu	0.119	▼ -0.014	▲ 0.017	▲ 0.071
WTI Crude	\$/Bbl	91.59	▲ 0.520	▲ 4.770	▲ 30.090
Brent Crude	\$/Bbl	97.93	▲ 4.390	▲ 7.900	▲ 31.800
Fuel Oil, NY Harbour 1%	\$/Bbl	97.18	▲ 0.000	▲ 0.000	▲ 0.000
Heating Oil	cents/Gallon	284.95	▲ 6.800	▲ 6.400	▲ 99.300
Propane, Mt. Bel	cents/Gallon	1.31	▲ 0.025	▲ 0.148	▲ 0.400
Ethane, Mt. Bel	cents/Gallon	0.40	▲ 0.005	▲ 0.023	▲ 0.133
Coal, PRB	\$/MTon	12.30	▲ 0.000	▲ 0.000	▲ 0.000
Coal, PRB	\$/MMBtu	0.70			
Coal, ILB	\$/MTon	31.05	▲ 0.000	▲ 0.000	▲ 0.000
Coal, ILB	\$/MMBtu	1.32			

Nat Gas Term Structure (\$MMBTU)



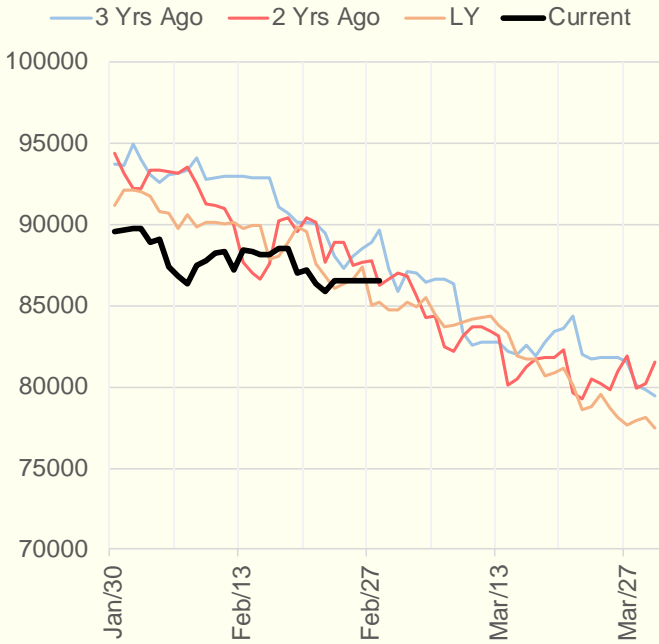
	APR 22	MAY 22	JUN 22	JUL 22	AUG 22	SEP 22	OCT 22	NOV 22	DEC 22	JAN 23	FEB 23	MAR 23
Henry Hub	\$4.548	\$4.571	\$4.611	\$4.670	\$4.679	\$4.661	\$4.675	\$4.788	\$4.927	\$5.037	\$4.840	\$4.428
JKL	\$27.510	\$29.440	\$29.485	\$29.675	\$29.720	\$29.915	\$29.975	\$30.645	\$31.010	\$30.975	\$30.850	\$28.010
JKL-HHub	\$22.962	\$24.869	\$24.874	\$25.005	\$25.041	\$25.254	\$25.300	\$25.857	\$26.083	\$25.938	\$26.010	\$23.582
TTF	\$30.752	\$30.310	\$30.197	\$30.139	\$30.110	\$30.103	\$30.104	\$30.288	\$30.412	\$30.434	\$30.409	\$28.533
TTF-HHub	\$26.204	\$25.739	\$25.586	\$25.469	\$25.431	\$25.442	\$25.429	\$25.500	\$25.485	\$25.397	\$25.569	\$24.105
NBP	\$30.126	\$30.019	\$29.966	\$29.921	\$29.961	\$30.067	\$30.294	\$31.292	\$31.632	\$31.837	\$31.757	\$29.572
NBP-HHub	\$25.578	\$25.448	\$25.355	\$25.251	\$25.282	\$25.406	\$25.619	\$26.504	\$26.705	\$26.800	\$26.917	\$25.144

Weather Storage Model - Next 4 Week Forecast

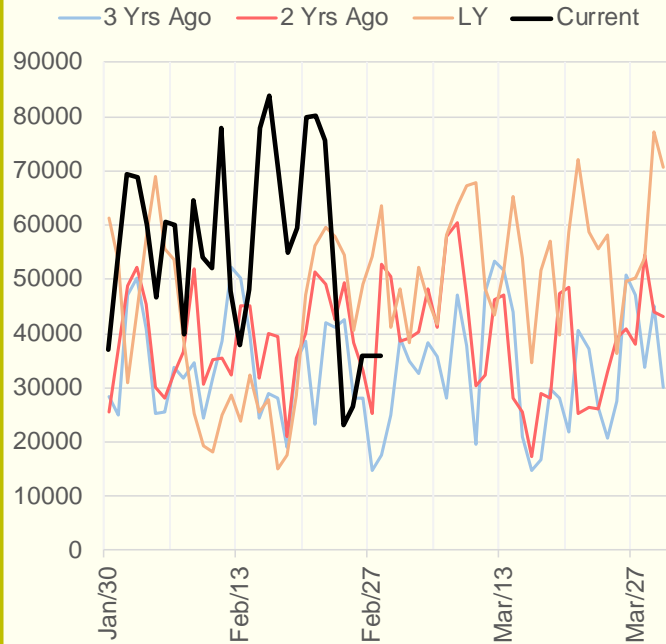


The risk of trading futures and options and other derivatives involves a substantial risk of loss and is not suitable for all persons. Each person must consider whether a particular trade, combination of trades, or strategy is suitable for that person's financial means and objectives. Past results are not necessarily indicative of future results. This communication may contain links to third party websites which are not under the control of and are not maintained by ION Energy Group, and ION Energy Group is not responsible for their content.

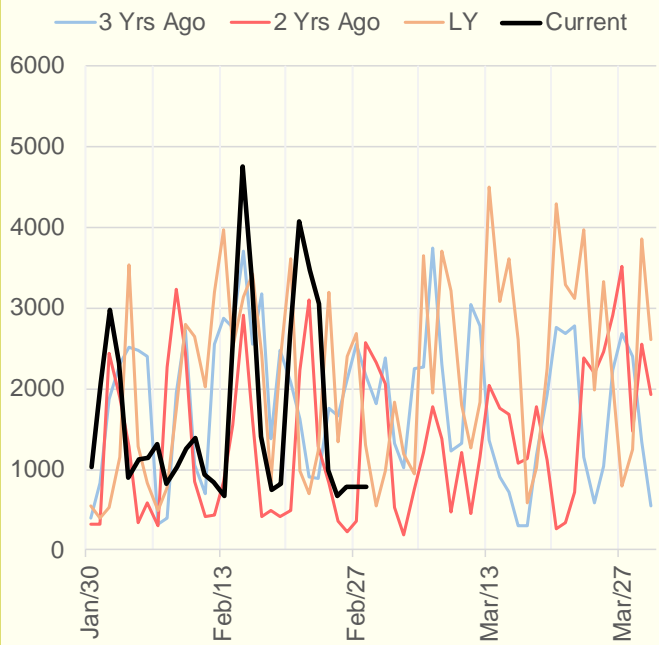
NRC Nuclear Daily Output



US Wind



CALI Wind



TEXAS Wind

