

	Current	Δ from YD	Δ from 7D Avg
Nat Gas Prompt	\$ 4.80 ▲	\$ 0.06 ▲	\$ 0.12

	Current	Δ from YD	Δ from 7D Avg
WTI Prompt	\$ 100.56 ▲	\$ 5.52 ▼	\$ (3.5)

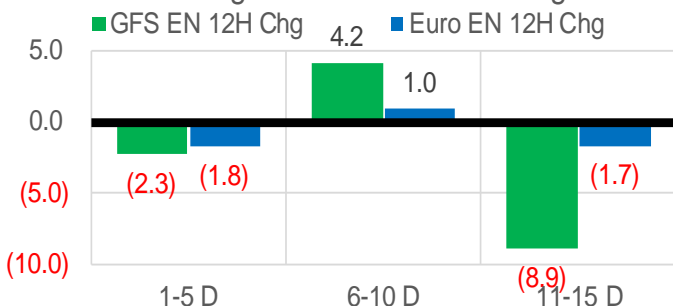
	Current	Δ from YD	Δ from 7D Avg
Brent Prompt	\$ 103.88 ▲	\$ 5.86 ▼	\$ (3.6)

Page Menu

- [Short-term Weather Model Outlooks](#)
- [Lower 48 Component Models](#)
- [Regional S/D Models Storage Projection](#)
- [Weather Model Storage Projection](#)
- [Supply – Demand Trends](#)
- [Nat Gas Options Volume and Open Interest](#)
- [Nat Gas Futures Open Interest](#)
- [Price Summary](#)

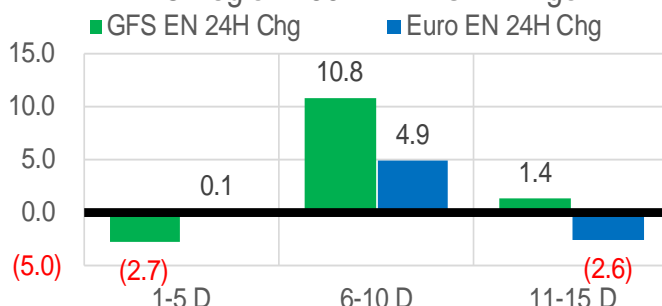
Vs. 12H Ago

L48 Region - 00z TDD vs 12H Ago



Vs. 24H Ago

L48 Region - 00z TDD vs 24H Ago



	Current	Δ from YD	Δ from 7D Avg
US Dry Production	94.3 ▲	0.11	0.67

	Current	Δ from YD	Δ from 7D Avg
US Power Burns	25.5 ▲	0.71	-1.64

	Current	Δ from YD	Δ from 7D Avg
US ResComm	21.1 ▼	-0.89	-13.66

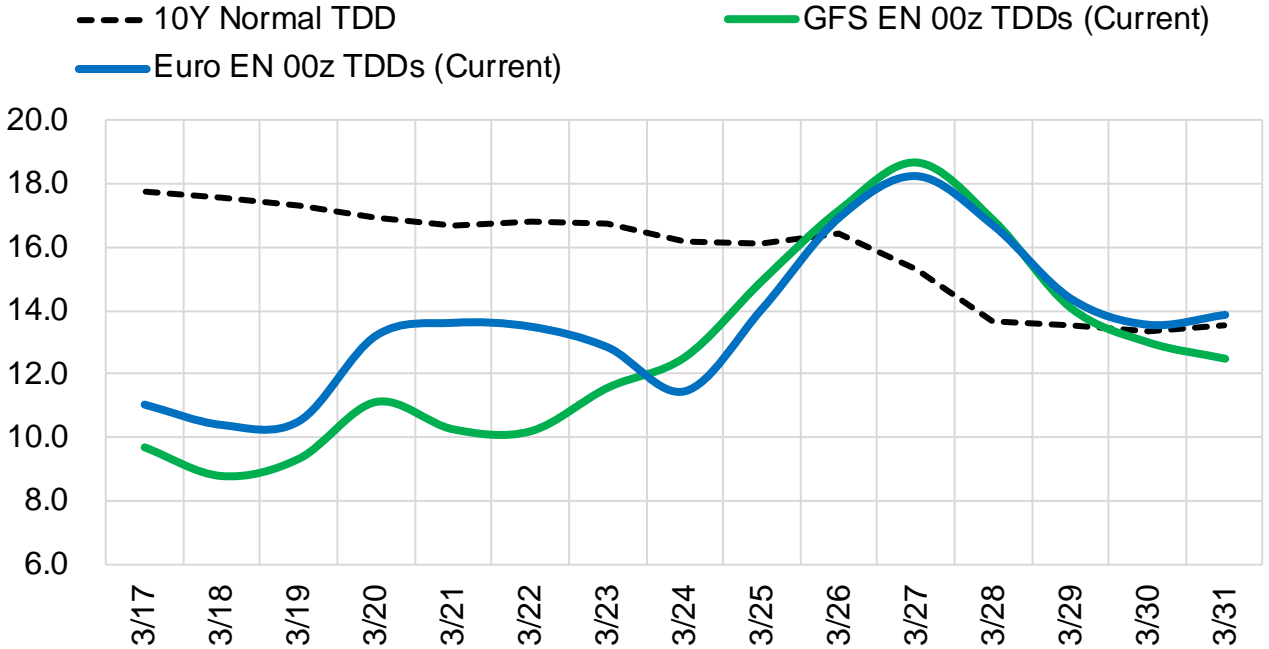
	Current	Δ from YD	Δ from 7D Avg
Canadian Imports	4.8 ▲	0.12	-0.59

	Current	Δ from YD	Δ from 7D Avg
Net LNG Exports	13.0 ▲	0.11	0.13

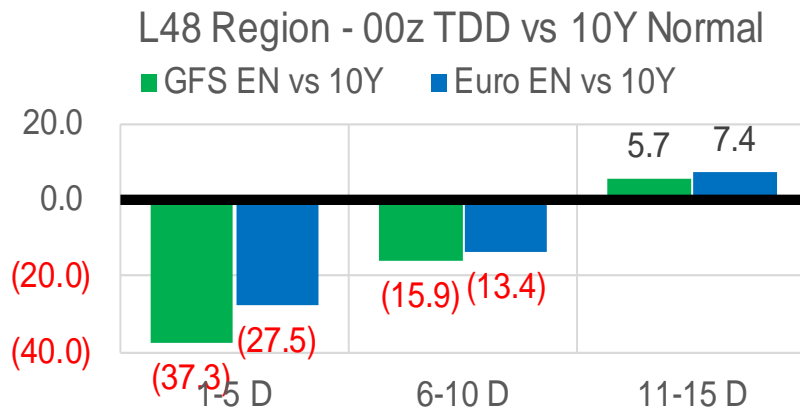
	Current	Δ from YD	Δ from 7D Avg
Mexican Exports	6.6 ▲	0.01	0.06

Short-term Weather Model Outlooks (00z)

L48 Region



Vs. 10Y Normal



Source: WSI , Bloomberg

Lower 48 Component Models

Daily Balances

	11-Mar	12-Mar	13-Mar	14-Mar	15-Mar	16-Mar	17-Mar	DoD	vs. 7D
Lower 48 Dry Production	92.8	93.1	93.6	93.4	94.4	94.2	94.3	▲ 0.1	▲ 0.8
Canadian Imports	5.4	5.8	5.8	5.5	4.8	4.7	4.8	▲ 0.1	▼ -0.5
L48 Power	28.4	28.8	27.0	26.5	25.4	24.8	25.5	▲ 0.7	▼ -1.3
L48 Residential & Commercial	39.6	47.5	40.5	29.3	24.4	22.0	21.1	▼ -0.9	▼ -12.8
L48 Industrial	22.9	23.0	21.7	20.5	20.0	20.0	20.3	▲ 0.3	▼ -1.0
L48 Lease and Plant Fuel	5.1	5.1	5.1	5.1	5.1	5.1	5.1	▲ 0.0	▲ 0.0
L48 Pipeline Distribution	3.5	4.0	3.5	2.9	2.6	2.4	2.4	▼ 0.0	▼ -0.7
L48 Regional Gas Consumption	99.5	108.4	97.8	84.3	77.6	74.3	74.4	▲ 0.1	▼ -15.9
Net LNG Delivered	12.80	13.43	13.22	12.62	12.55	12.88	12.99	▲ 0.1	▲ 0.1
Total Mexican Exports	6.8	6.3	6.2	6.5	6.7	6.6	6.6	▲ 0.0	▲ 0.1
Implied Daily Storage Activity	-20.9	-29.3	-17.8	-4.6	2.4	5.1	5.1		
EIA Reported Daily Storage Activity									
Daily Model Error									

EIA Storage Week Balances

	4-Feb	11-Feb	18-Feb	25-Feb	4-Mar	11-Mar	WoW	vs. 4W
Lower 48 Dry Production	93.8	91.5	95.6	94.2	94.1	94.8	▲ 0.6	▲ 0.9
Canadian Imports	7.1	7.1	6.2	6.4	5.9	5.2	▼ -0.7	▼ -1.2
L48 Power	29.7	29.4	26.8	27.3	28.2	26.6	▼ -1.6	▼ -1.3
L48 Residential & Commercial	49.0	45.8	40.3	41.4	38.6	33.6	▼ -5.0	▼ -8.0
L48 Industrial	27.0	24.6	26.1	26.2	23.8	23.3	▼ -0.5	▼ -1.9
L48 Lease and Plant Fuel	5.1	5.0	5.2	5.1	5.1	5.2	▲ 0.0	▲ 0.0
L48 Pipeline Distribution	3.8	3.5	3.2	3.2	3.3	3.1	▼ -0.1	▼ -0.2
L48 Regional Gas Consumption	114.6	108.3	101.6	103.2	99.0	91.7	▼ -7.3	▼ -11.3
Net LNG Exports	12.1	12.4	13.0	11.7	12.5	12.8	▲ 0.3	▲ 0.4
Total Mexican Exports	6.4	6.1	6.1	6.1	6.4	6.6	▲ 0.1	▲ 0.4
Implied Daily Storage Activity	-32.2	-28.2	-18.9	-20.5	-17.9	-11.1	6.8	
EIA Reported Daily Storage Activity	-31.7	-27.1	-18.4	-19.9	-17.7			
Daily Model Error	-0.5	-1.1	-0.4	-0.6	-0.2			

Monthly Balances

	2Yr Ago Mar-20	LY Mar-21	Nov-21	Dec-21	Jan-22	Feb-22	MTD Mar-22	MoM	vs. LY
Lower 48 Dry Production	94.2	91.3	95.7	96.2	94.3	93.5	94.3	▲ 0.9	▲ 3.0
Canadian Imports	4.1	4.8	5.3	4.8	6.7	6.6	5.3	▼ -1.3	▲ 0.5
L48 Power	28.3	24.5	29.2	28.5	30.7	28.2	26.7	▼ -1.5	▲ 2.2
L48 Residential & Commercial	27.6	28.9	28.4	33.8	49.1	43.0	33.2	▼ -9.9	▲ 4.3
L48 Industrial	22.3	19.3	23.0	22.9	26.4	25.6	22.6	▼ -3.0	▲ 3.4
L48 Lease and Plant Fuel	5.1	5.0	5.3	5.3	5.2	5.1	5.1	▲ 0.0	▲ 0.2
L48 Pipeline Distribution	2.9	2.8	2.9	3.2	3.9	3.4	3.1	▼ -0.2	▲ 0.3
L48 Regional Gas Consumption	86.2	80.4	88.8	93.7	115.2	105.3	90.7	▼ -14.6	▲ 10.3
Net LNG Exports	8.5	11.1	11.4	12.1	12.4	12.4	12.7	▲ 0.3	▲ 1.6
Total Mexican Exports	5.4	6.5	6.1	6.2	6.3	6.2	6.6	▲ 0.4	▲ 0.1
Implied Daily Storage Activity	-1.9	-2.0	-5.3	-11.0	-32.9	-23.8	-10.4		
EIA Reported Daily Storage Activity									
Daily Model Error									

Source: Bloomberg, analytix.ai

Daily Average Generation Data

Nuclear Generation Daily Average - GWh (NRC)

	9-Mar	10-Mar	11-Mar	12-Mar	13-Mar	14-Mar	15-Mar	DoD	vs. 7D
NRC Nuclear Daily Output	81.2	81.9	81.5	80.3	81.1	81.0	80.9	-0.1	-0.2
NRC Nuclear Max Capacity	104.9	104.9	104.9	104.9	104.9	104.9	104.9	0.0	0.0
NRC Nuclear Outage	23.7	23.0	23.4	24.6	23.8	23.8	24.0	0.1	0.2
NRC % Nuclear Cap Utilization	82.5	83.3	82.9	81.6	82.4	82.4	82.3	-0.1	-0.2

Wind Generation Daily Average - MWh (EIA)

	9-Mar	10-Mar	11-Mar	12-Mar	13-Mar	14-Mar	15-Mar	DoD	vs. 7D
CALI Wind	2759	2467	802	1237	3389	1578	3188	1610	1149
TEXAS Wind	11044	13224	17888	13743	21867	20939	10179	-10760	-6272
US Wind	45684	46546	61235	60808	73690	70617	45780	-24837	-13983

Generation Daily Average - MWh (EIA)

	9-Mar	10-Mar	11-Mar	12-Mar	13-Mar	14-Mar	15-Mar	DoD	vs. 7D
US Wind	45684	46546	61235	60808	73690	70617	45780	-24837	-13983
US Solar	12156	12887	13471	14659	11009	17029	13672	-3356	137
US Petroleum	802	822	1089	901	1129	1092	1044	-48	72
US Other	6789	6915	6123	6525	7303	7137	6842	-296	43
US Coal	94165	95472	93232	97591	90204	84046	86466	2420	-5986
US Nuke	85576	86043	85197	84459	84752	85050	84781	-269	-398
US Hydro	32369	37038	36301	36439	30258	34986	34635	-351	69
US Gas	165902	155830	151561	156209	135931	128486	136549	8063	-12438

See National Wind and Nuclear daily charts

Source: Bloomberg, analytix.ai

Storage Week Average Generation Data

Nuclear Generation Weekly Average - GWh (NRC)

	4-Feb	11-Feb	18-Feb	25-Feb	4-Mar	11-Mar	WoW	WoW Bcf/d Impact
NRC Nuclear Daily Output	89.5	87.6	88.2	86.9	85.8	82.3	-3.5	0.6
NRC Nuclear Max Capacity	104.9	104.9	104.9	104.9	104.9	104.9	0.0	
NRC Nuclear Outage	15.4	17.3	16.7	18.0	19.1	22.5	3.5	
NRC % Nuclear Cap Utilization	91.0	89.1	89.7	88.3	87.2	83.7	-3.5	

Wind Generation Weekly Average - MWh (EIA)

	4-Feb	11-Feb	18-Feb	25-Feb	4-Mar	11-Mar	WoW	WoW Bcf/d Impact
CALI Wind	1507	999	1900	2049	815	2602	1787	-0.3
TEXAS Wind	12223	9259	16874	13068	6269	14469	8200	-1.5
US Wind	53792	53792	63113	60313	36019	56872	20852	-3.8

1.3

Generation Weekly Average - MWh (EIA)

	4-Feb	11-Feb	18-Feb	25-Feb	4-Mar	11-Mar	WoW	WoW Bcf/d Impact
						est.		
US Wind	53792	53792	63113	60313	36019	56872	20852	-3.8
US Solar	10459	12287	12313	11899	13919	12529	-1389	0.3
US Petroleum	4672	3554	4126	2961	3130	1754	-1376	0.2
US Other	9661	9373	9134	8211	7510	6539	-971	0.2
US Coal	124780	113776	101700	99888	103399	86717	-16681	3.0
US Nuke	94661	92640	92758	91458	90165	86461	-3704	0.7
US Hydro	31801	32213	31952	33214	32196	34065	1869	-0.3
US Gas	159394	162266	137939	147276	158688	140052	-18635	3.4

See National Wind and Nuclear daily charts

Source: Bloomberg, analytix.ai

Monthly Average Generation Data

Nuclear Generation Monthly Average - GWh (NRC)

	2Yr Ago	LY					MTD		
	Same 30 days	Same 30 days	Dec-21	Jan-22	Feb-22	Mar-22	Last 30 days	MoM (MTD vs LY)	Last 30 days YoY
NRC Nuclear Daily Output	85.8	85.4	90.3	90.2	87.6	82.3	84.3	-5.3	-1.1
NRC Nuclear Max Capacity	104.9	104.9	104.9	104.9	104.9	104.9	104.9	0.0	0.0
NRC Nuclear Outage	19.1	19.5	14.6	14.7	17.3	22.6	20.6	5.3	1.1
NRC % Nuclear Cap Utilization	87.2	86.8	91.8	91.7	89.0	83.7	85.7	-5.3	-1.1

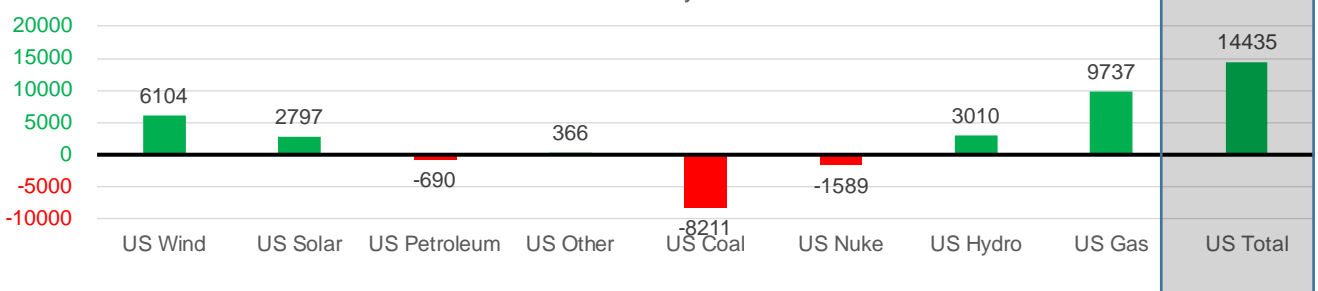
Wind Generation Monthly Average - MWh (EIA)

	2Yr Ago	LY					MTD		
	Same 30 days	Same 30 days	Dec-21	Jan-22	Feb-22	Mar-22	Last 30 days	MoM (MTD vs LY)	Last 30 days YoY
CALI Wind	1185	2126	1482	1244	1559	2205	1975	646	-152
TEXAS Wind	10214	12467	12927	11355	12294	13310	12703	1016	236
US Wind	39919	48207	54708	51045	56538	53489	54311	-3049	6104

Generation Monthly Average - MWh (EIA)

	2Yr Ago	LY					MTD		
	Same 30 days	Same 30 days	Dec-21	Jan-22	Feb-22	Mar-22	Last 30 days	MoM (MTD vs LY)	Last 30 days YoY
US Wind	39919	48207	54708	51045	56538	53489	54311	▲ 821.9	▲ 6104
US Solar	7104	10119	7375	9476	12088	13466	12916	▼ -549.9	▲ 2797
US Petroleum	3240	2971	3135	5021	3449	1688	2281	▲ 593	▼ -690
US Other	6637	6977	8222	8792	8831	6670	7342	▲ 672	▲ 366
US Coal	75386	103109	81462	117971	106587	89479	94898	▲ 5419	▼ -8211
US Nuke	86769	90146	95449	95259	92275	86332	88557	▲ 2225	▼ -1589
US Hydro	34356	30367	30824	34102	32212	34063	33376	▼ -686	▲ 3010
US Gas	158476	135276	152639	164023	152048	141455	145013	▲ 8495	▲ 9737
US Total	410240	425471	433931	485813	464579	428389	439905	▲ 16168	▲ 14435

Last 30 days YoY



See National Wind and Nuclear daily charts

Source: Bloomberg, analytix.ai

Regional S/D Models Storage Projection

Week Ending 11-Mar

	Daily Raw Storage	Daily Adjustment Factor	Daily Average Storage Activity (Adjusted) *	Weekly Adjusted Storage Activity
L48	-10.8	0.3	-10.5	-74
East	-6.1	2.2	-3.9	-28
Midwest	-3.8	-0.3	-4.1	-28
Mountain	2.9	-3.7	-0.7	-5
South Central	-3.1	2.6	-0.6	-4
Pacific	-0.8	-0.5	-1.3	-9

*Adjustment Factor is calculated based on historical regional deltas

U.S. underground natural gas storage facilities by type (July 2015)

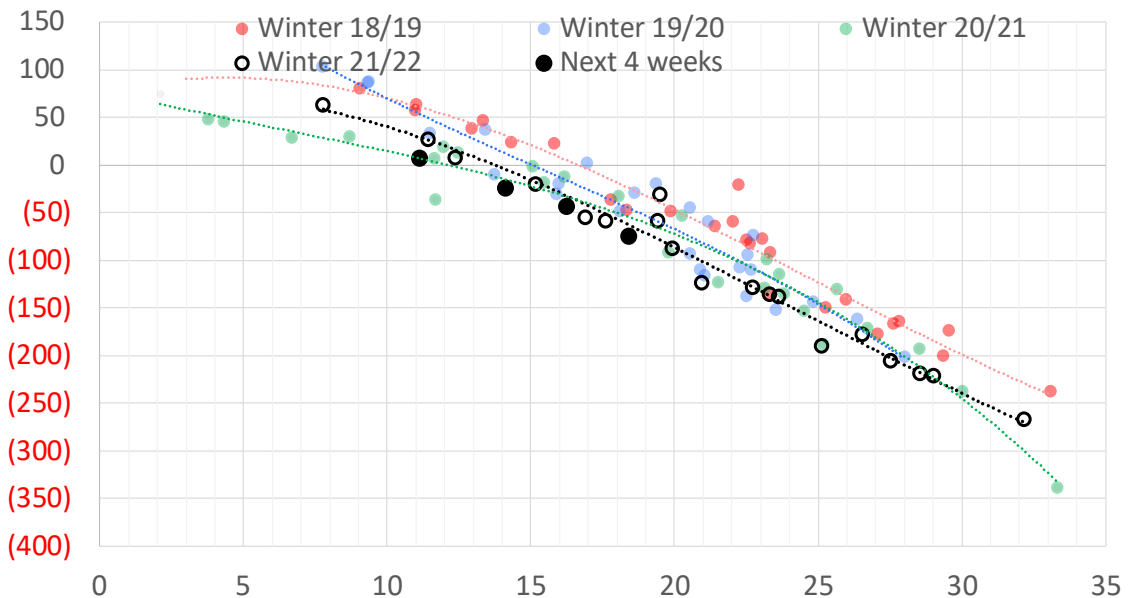


Weather Model Storage Projection

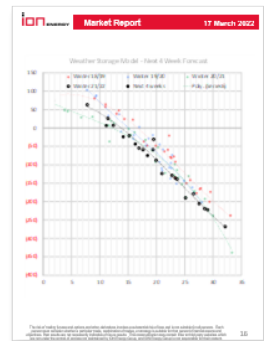
Next report
and beyond

Week Ending	GWDDs	Week Storage Projection
11-Mar	18	-74
18-Mar	16	-43
25-Mar	11	8
01-Apr	14	-24

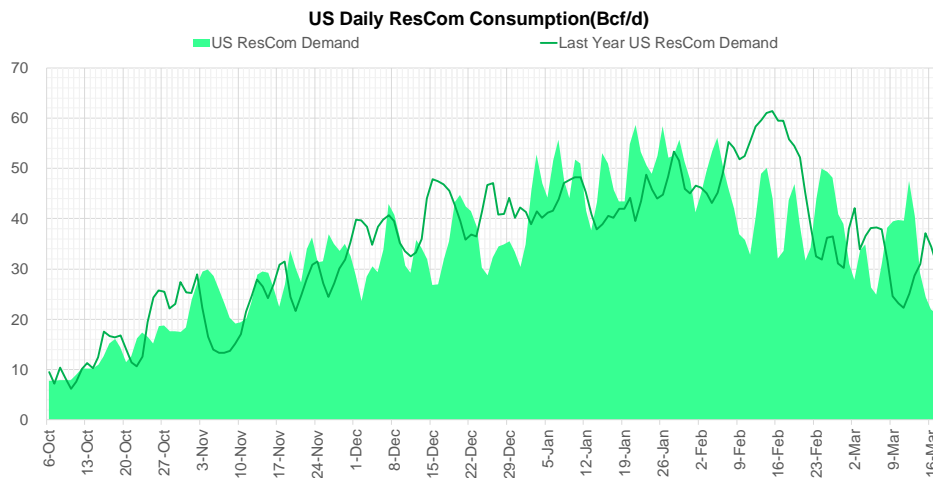
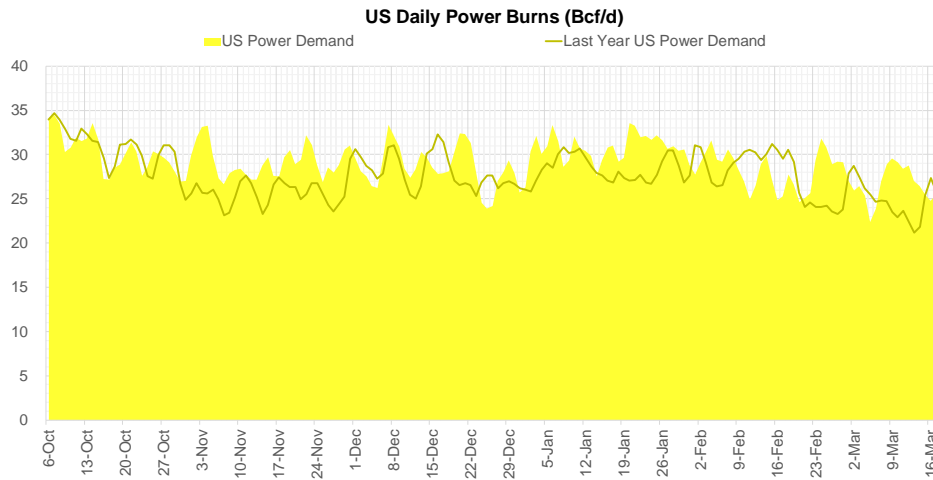
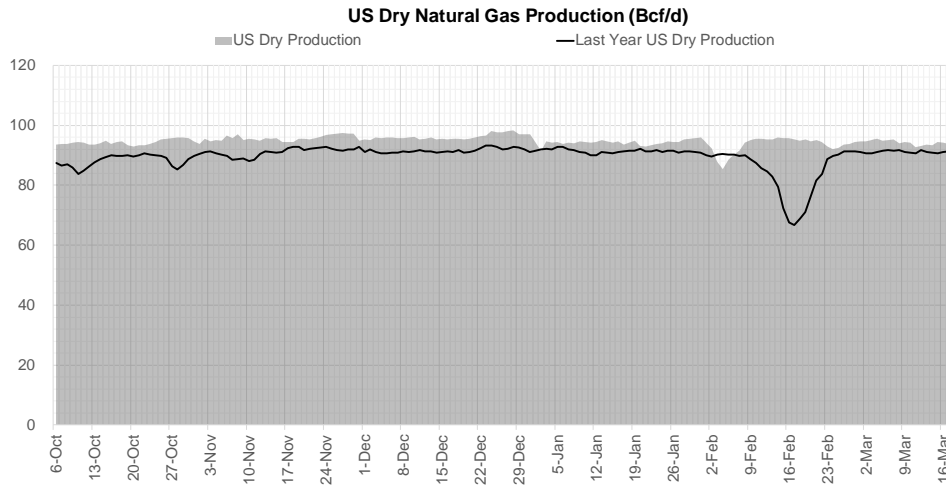
Weather Storage Model - Next 4 Week Forecast



Go to larger image



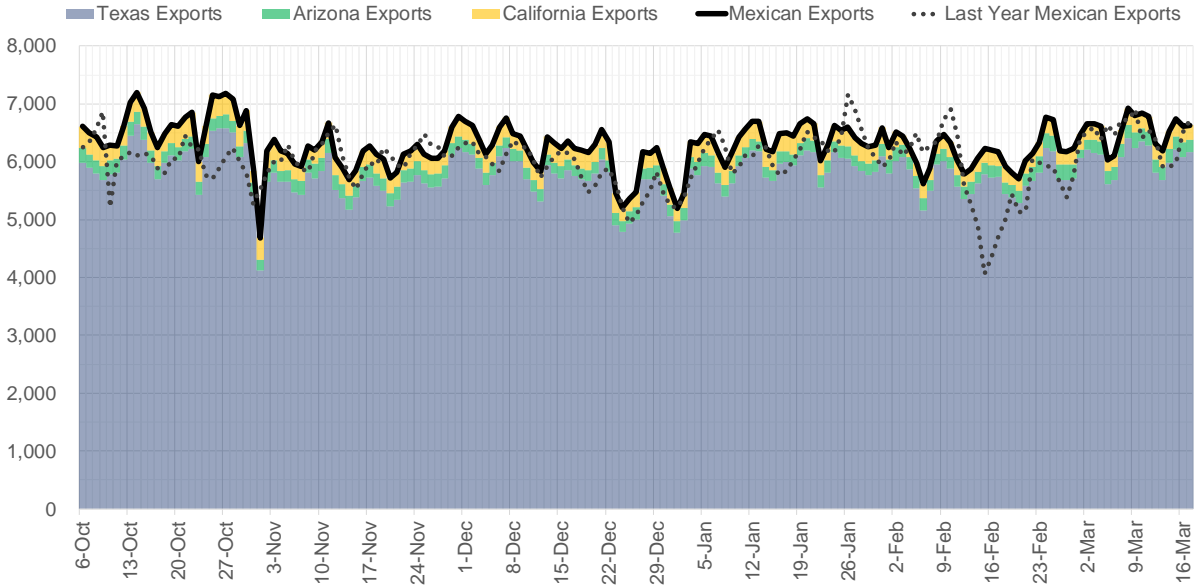
Supply – Demand Trends



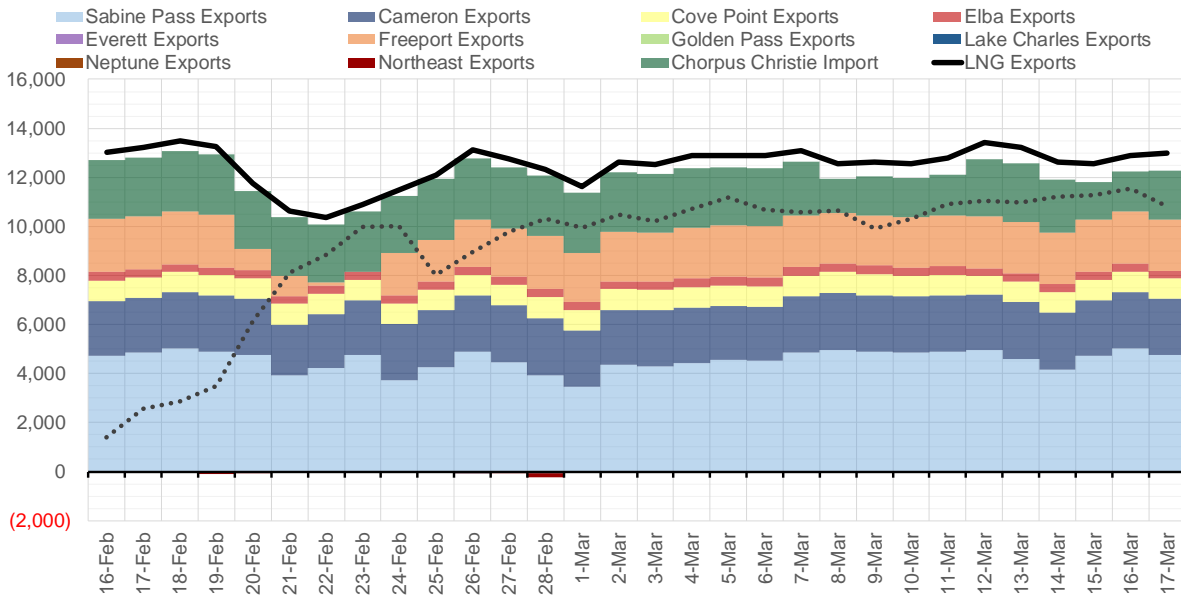
Source: Bloomberg

The risk of trading futures and options and other derivatives involves a substantial risk of loss and is not suitable for all persons. Each person must consider whether a particular trade, combination of trades, or strategy is suitable for that person's financial means and objectives. Past results are not necessarily indicative of future results. This communication may contain links to third party websites which are not under the control of and are not maintained by ION Energy Group, and ION Energy Group is not responsible for their content.

Mexican Exports (MMcf/d)



Net LNG Exports - Last 30 days (MMcf/d)



Source: Bloomberg

The risk of trading futures and options and other derivatives involves a substantial risk of loss and is not suitable for all persons. Each person must consider whether a particular trade, combination of trades, or strategy is suitable for that person's financial means and objectives. Past results are not necessarily indicative of future results. This communication may contain links to third party websites which are not under the control of and are not maintained by ION Energy Group, and ION Energy Group is not responsible for their content.

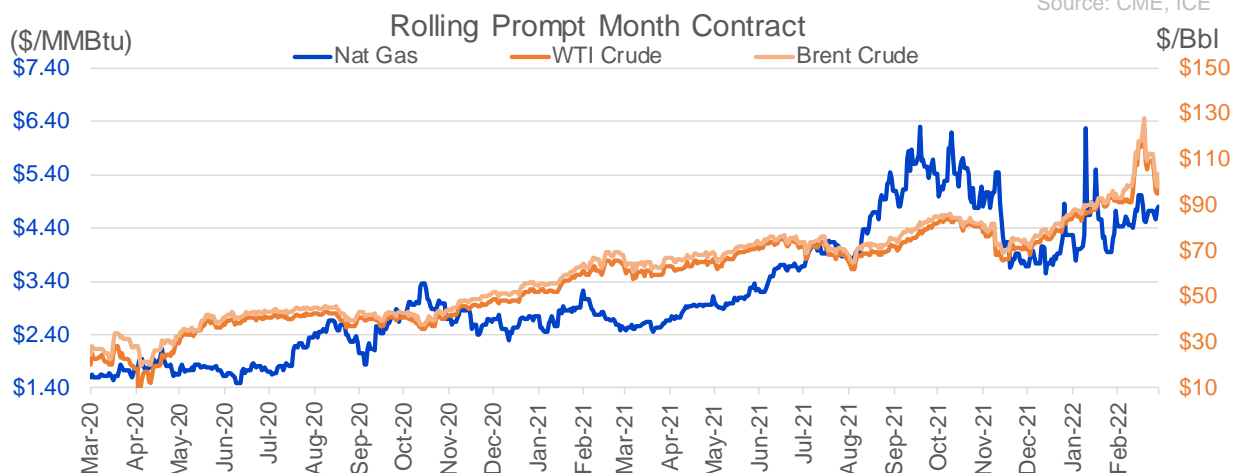
Nat Gas Options Volume and Open Interest CME and ICE Combined

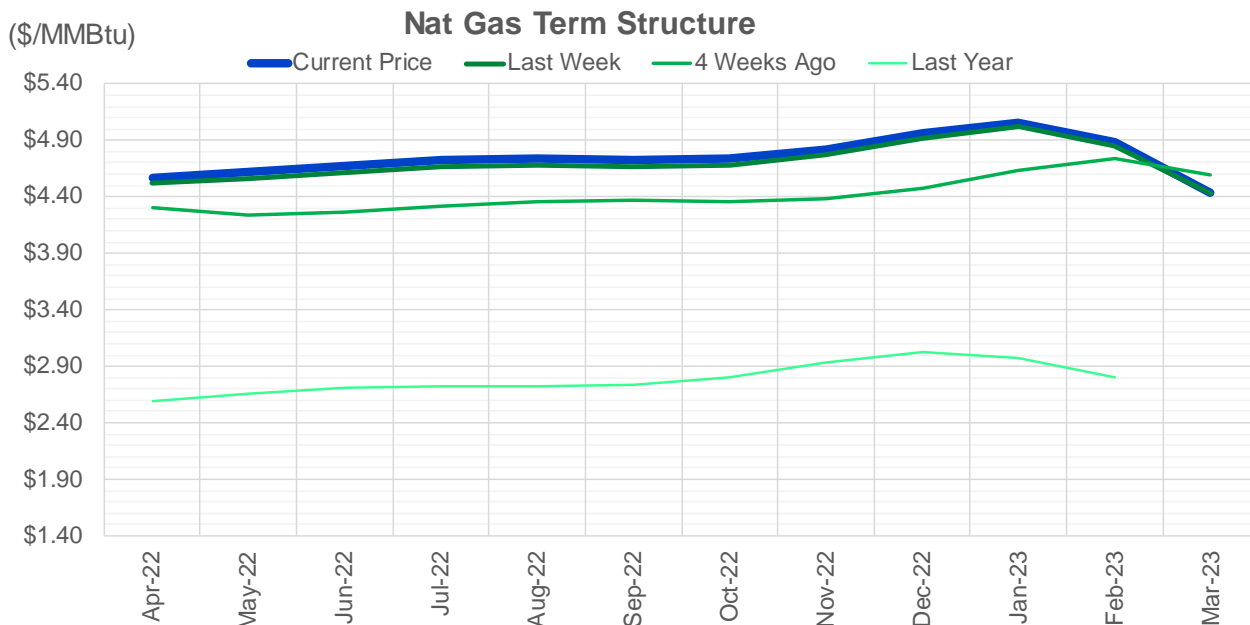
CONTRACT MONTH	CONTRACT YEAR	PUT/CALL	STRIKE	CUMULATIVE VOL	CONTRACT MONTH	CONTRACT YEAR	PUT/CALL	STRIKE	CUMULATIVE OI
4	2022	P	4.50	2665	4	2022	P	3.50	34519
5	2022	C	6.00	2593	4	2022	C	5.00	33796
4	2022	P	4.25	2454	4	2022	C	4.75	30326
4	2022	P	4.00	2411	4	2022	P	3.00	28951
3	2023	C	20.00	2050	10	2022	C	6.00	27336
4	2022	C	6.00	1625	10	2022	C	5.00	26214
5	2022	C	5.00	1409	4	2022	P	4.00	25222
5	2022	P	4.25	1405	4	2022	P	3.75	24212
4	2022	C	5.00	1299	6	2022	C	6.00	23036
6	2022	C	7.00	1260	5	2022	P	3.00	22965
8	2022	C	9.00	1200	5	2022	C	5.00	22704
4	2022	C	5.50	1134	5	2022	P	4.00	22419
5	2022	C	6.50	1059	4	2022	C	6.00	22187
6	2022	C	5.00	1058	7	2022	C	6.00	21424
5	2022	P	4.00	995	5	2022	C	6.00	20751
5	2022	C	5.50	959	9	2022	C	6.00	20372
8	2022	C	7.00	900	5	2022	P	2.50	19898
5	2022	P	3.75	853	8	2022	C	6.00	19497
4	2022	C	5.30	830	5	2022	P	3.50	19430
4	2022	C	5.20	772	6	2022	P	4.00	19065
5	2022	C	7.00	770	4	2022	P	4.50	18857
5	2022	P	4.75	755	10	2022	P	3.00	18647
4	2022	C	5.25	730	6	2022	C	5.00	18344
6	2022	C	6.00	666	4	2022	C	5.50	18319
9	2022	P	4.00	648	12	2022	C	5.00	17968
6	2022	P	4.25	637	6	2022	P	3.00	17945
6	2022	C	5.50	625	4	2022	C	4.50	17754
6	2022	P	4.00	611	5	2022	P	2.75	17685
10	2022	P	4.00	597	4	2022	C	3.00	17511
4	2022	C	5.10	567	4	2022	P	2.50	17245
9	2022	C	6.00	559	4	2022	P	4.25	16760
8	2022	P	3.75	550	10	2022	C	7.00	16457
4	2022	P	3.50	533	7	2022	P	3.25	16411
8	2022	C	5.50	530	12	2022	C	6.00	15470
7	2022	C	7.00	527	9	2022	P	2.50	15386
5	2022	P	4.50	509	4	2022	C	8.00	15346
4	2022	C	7.00	509	6	2022	P	3.50	15149
7	2022	C	5.50	501	8	2022	P	3.00	15091
6	2022	P	3.75	500	4	2022	P	3.25	14884
7	2022	P	3.75	500	7	2022	P	3.00	14639
9	2022	C	5.50	500	10	2022	P	2.00	14421
9	2022	P	3.75	500	5	2022	C	7.00	14404
10	2022	C	5.50	500	5	2023	C	5.00	14379
10	2022	P	3.75	500	5	2022	P	3.75	14124
8	2022	P	4.00	461	6	2022	C	4.50	14048
8	2022	P	3.50	450	9	2022	P	2.75	13933
4	2022	P	4.30	449	6	2022	P	3.75	13867
7	2022	P	4.00	430	5	2022	C	3.00	13733
1	2023	C	7.00	425	7	2022	C	5.00	13555
					8	2022	C	7	13480

Source: CME, ICE

Nat Gas Futures Open Interest CME and ICE Combined

CME Henry Hub Futures (10,000 MMBtu)				ICE Henry Hub Futures Contract Equivalent (10,000 MM			
	Current	Prior	Daily Change		Current	Prior	Daily Change
APR 22	66201	69977	-3776	APR 22	73375	74712	-1337
MAY 22	210153	208117	2036	MAY 22	78067	78168	-102
JUN 22	69222	70355	-1133	JUN 22	70500	70663	-163
JUL 22	87879	88388	-509	JUL 22	67165	66630	535
AUG 22	43336	42121	1215	AUG 22	60093	60059	35
SEP 22	74219	73876	343	SEP 22	63420	63433	-14
OCT 22	82385	83022	-637	OCT 22	68884	69214	-330
NOV 22	42327	42857	-530	NOV 22	54264	54063	201
DEC 22	44826	44830	-4	DEC 22	63505	63087	418
JAN 23	58288	58204	84	JAN 23	63278	62944	334
FEB 23	19622	19690	-68	FEB 23	45925	45759	167
MAR 23	37767	37347	420	MAR 23	51153	50777	377
APR 23	45167	44684	483	APR 23	49139	49236	-98
MAY 23	24714	24315	399	MAY 23	44071	44325	-254
JUN 23	14484	14223	261	JUN 23	40960	40894	67
JUL 23	11931	11303	628	JUL 23	40350	40305	44
AUG 23	9867	9508	359	AUG 23	39797	39810	-14
SEP 23	12770	12726	44	SEP 23	39750	39692	58
OCT 23	24401	24176	225	OCT 23	44085	44327	-242
NOV 23	10439	10198	241	NOV 23	40730	40833	-104
DEC 23	14315	14345	-30	DEC 23	36227	36241	-14
JAN 24	18396	18221	175	JAN 24	32063	31915	149
FEB 24	3515	3424	91	FEB 24	22351	22247	104
MAR 24	14137	14132	5	MAR 24	27074	27028	46
APR 24	7218	7378	-160	APR 24	20481	20459	23
MAY 24	2258	2271	-13	MAY 24	19746	19600	146
JUN 24	1117	1116	1	JUN 24	19447	19454	-8
JUL 24	1363	1363	0	JUL 24	20039	19970	69
AUG 24	1051	1051	0	AUG 24	20023	20030	-8
SEP 24	1163	1162	1	SEP 24	19567	19500	67





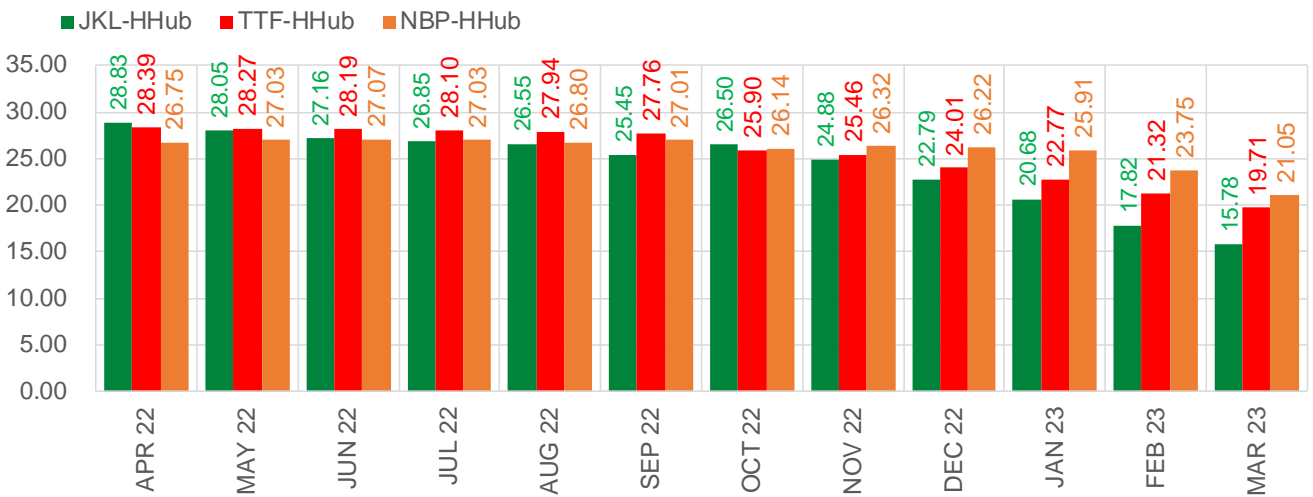
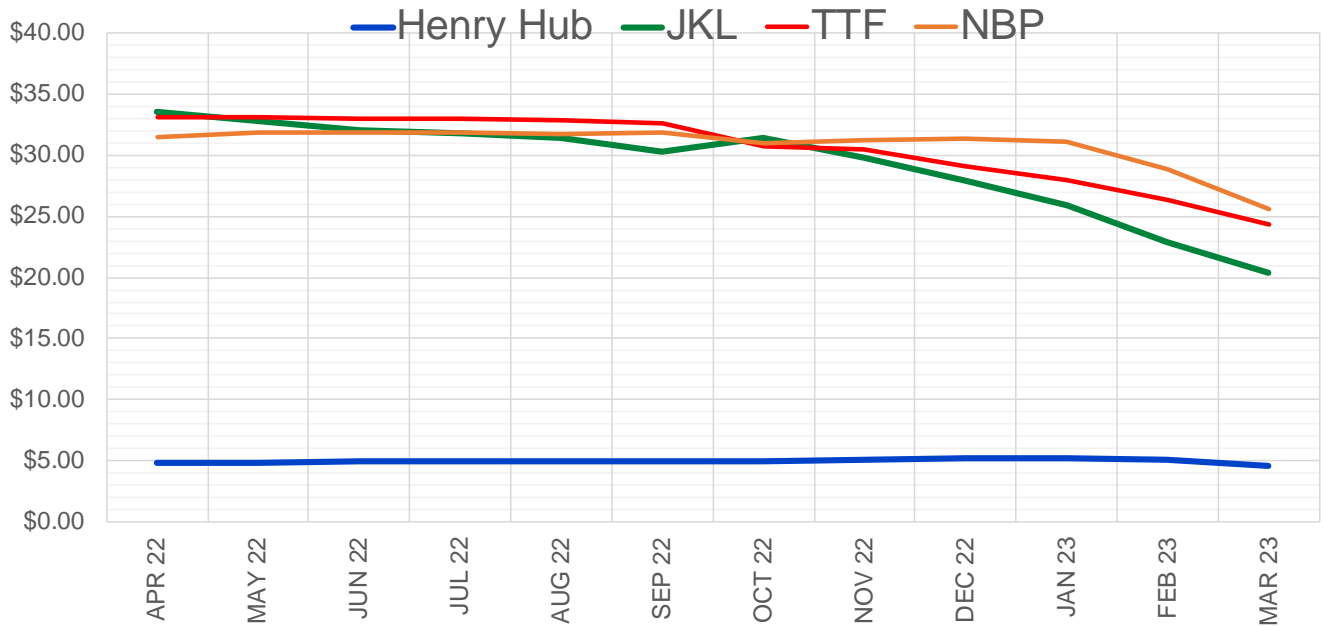
	Apr-22	May-22	Jun-22	Jul-22	Aug-22	Sep-22	Oct-22	Nov-22	Dec-22	Jan-23	Feb-23	Mar-23
Current Price	\$4.568	\$4.617	\$4.670	\$4.727	\$4.737	\$4.720	\$4.736	\$4.813	\$4.964	\$5.059	\$4.887	\$4.442
Last Week	\$4.527	\$4.563	\$4.611	\$4.670	\$4.681	\$4.665	\$4.683	\$4.766	\$4.921	\$5.018	\$4.853	\$4.429
vs. Last Week	\$0.041	\$0.054	\$0.059	\$0.057	\$0.056	\$0.055	\$0.053	\$0.047	\$0.043	\$0.041	\$0.034	\$0.013
4 Weeks Ago	\$4.306	\$4.241	\$4.267	\$4.312	\$4.362	\$4.372	\$4.355	\$4.378	\$4.476	\$4.640	\$4.744	\$4.598
vs. 4 Weeks Ago	\$0.262	\$0.376	\$0.403	\$0.415	\$0.375	\$0.348	\$0.381	\$0.435	\$0.488	\$0.419	\$0.143	-\$0.156
Last Year	\$2.562	\$2.597	\$2.654	\$2.713	\$2.730	\$2.720	\$2.734	\$2.803	\$2.930	\$3.021	\$2.970	\$2.806
vs. Last Year	\$2.006	\$2.020	\$2.016	\$2.014	\$2.007	\$2.000	\$2.002	\$2.010	\$2.034	\$2.038	\$1.917	\$1.636

	Units	Cash Settled	Prompt Settle	Cash to Prompt
AGT Citygate	\$/MMBtu	4.05	4.72	0.67
TETCO M3	\$/MMBtu	3.87	3.92	0.05
FGT Zone 3	\$/MMBtu	3.90	4.61	0.71
Zone 6 NY	\$/MMBtu	3.90	3.96	0.06
Chicago Citygate	\$/MMBtu	4.21	4.38	0.17
Michcon	\$/MMBtu	4.38	4.36	-0.02
Columbia TCO Pool	\$/MMBtu	3.80	3.97	0.18
Ventura	\$/MMBtu	4.14	4.33	0.19
Rockies/Opal	\$/MMBtu	4.10	4.10	0.00
El Paso Permian Basin	\$/MMBtu	3.65	3.88	0.23
Socal Citygate	\$/MMBtu	4.25	4.17	-0.08
Malin	\$/MMBtu	4.15	4.14	-0.01
Houston Ship Channel	\$/MMBtu	4.23	4.35	0.12
Henry Hub Cash	\$/MMBtu	4.68	4.27	-0.41
AECO Cash	C\$/GJ	3.75	3.31	-0.44
Station2 Cash	C\$/GJ	3.66	4.04	0.38
Dawn Cash	C\$/GJ	4.51	4.41	-0.10

Source: CME, Bloomberg

	Units	Current Price	vs. Last Week	vs. 4 Weeks Ago	vs. Last Year
NatGas Jul21/Oct21	\$/MMBtu	2.224	▲ 0.000	▲ 0.000	▲ 2.205
NatGas Oct21/Nov21	\$/MMBtu	0.361	▲ 0.000	▲ 0.000	▲ 0.288
NatGas Oct21/Jan22	\$/MMBtu	-1.817	▲ 0.000	▲ 0.000	▼ -2.114
NatGas Apr22/Oct22	\$/MMBtu	0.137	▼ -0.020	▲ 0.030	▲ 0.084
WTI Crude	\$/Bbl	95.04	▼ -13.660	▲ 1.380	▲ 30.440
Brent Crude	\$/Bbl	98.02	▼ -13.120	▲ 3.210	▲ 30.020
Fuel Oil, NY Harbour 1%	\$/Bbl	97.18	▲ 0.000	▲ 0.000	▲ 0.000
Heating Oil	cents/Gallon	310.01	▼ -36.420	▲ 24.260	▲ 119.400
Propane, Mt. Bel	cents/Gallon	1.37	▼ -0.119	▲ 0.098	▲ 0.435
Ethane, Mt. Bel	cents/Gallon	0.42	▲ 0.002	▲ 0.023	▲ 0.202
Coal, PRB	\$/MTon	12.30	▲ 0.000	▲ 0.000	▲ 0.000
Coal, PRB	\$/MMBtu	0.70			
Coal, ILB	\$/MTon	31.05	▲ 0.000	▲ 0.000	▲ 0.000
Coal, ILB	\$/MMBtu	1.32			

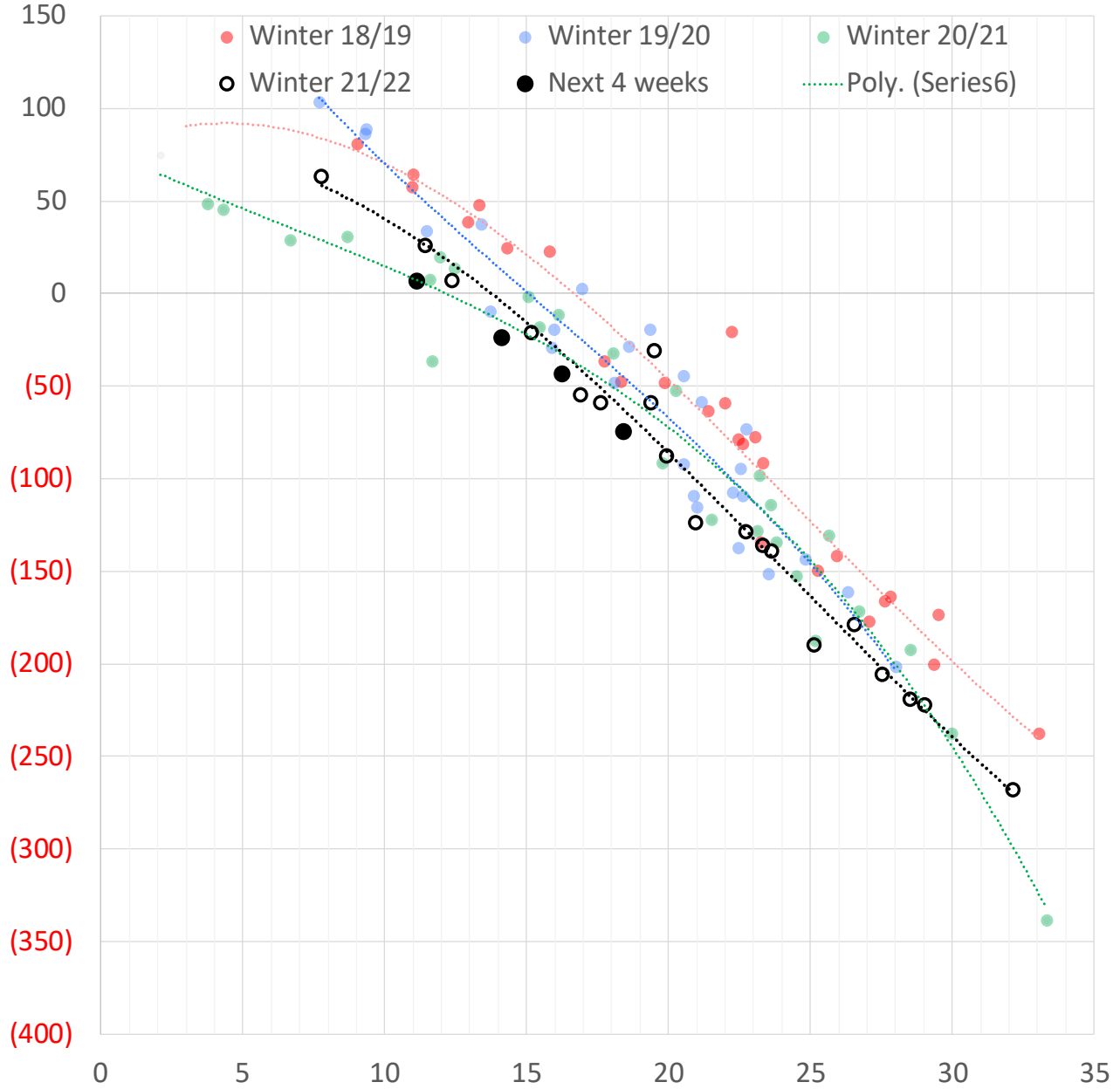
Nat Gas Term Structure (\$MMBTU)



	APR 22	MAY 22	JUN 22	JUL 22	AUG 22	SEP 22	OCT 22	NOV 22	DEC 22	JAN 23	FEB 23	MAR 23
Henry Hub	\$4.804	\$4.835	\$4.875	\$4.923	\$4.929	\$4.910	\$4.924	\$4.997	\$5.125	\$5.241	\$5.071	\$4.593
JKL	\$33.635	\$32.880	\$32.030	\$31.770	\$31.475	\$30.360	\$31.420	\$29.875	\$27.910	\$25.920	\$22.895	\$20.375
JKL-HHub	\$28.831	\$28.045	\$27.155	\$26.847	\$26.546	\$25.450	\$26.496	\$24.878	\$22.785	\$20.679	\$17.824	\$15.782
TTF	\$33.189	\$33.108	\$33.065	\$33.018	\$32.872	\$32.666	\$30.819	\$30.452	\$29.136	\$28.013	\$26.386	\$24.300
TTF-HHub	\$28.385	\$28.273	\$28.190	\$28.095	\$27.943	\$27.756	\$25.895	\$25.455	\$24.011	\$22.772	\$21.315	\$19.707
NBP	\$31.551	\$31.864	\$31.940	\$31.948	\$31.731	\$31.919	\$31.062	\$31.312	\$31.343	\$31.152	\$28.818	\$25.638
NBP-HHub	\$26.747	\$27.029	\$27.065	\$27.025	\$26.802	\$27.009	\$26.138	\$26.315	\$26.218	\$25.911	\$23.747	\$21.045

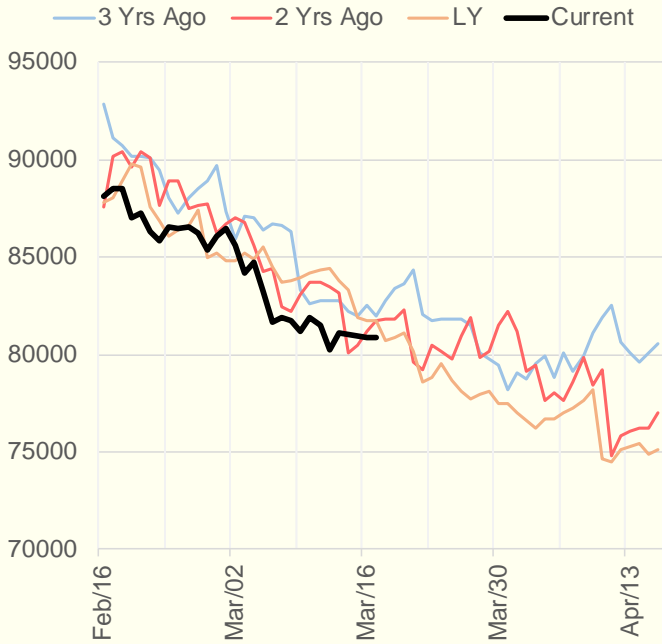
The risk of trading futures and options and other derivatives involves a substantial risk of loss and is not suitable for all persons. Each person must consider whether a particular trade, combination of trades, or strategy is suitable for that person's financial means and objectives. Past results are not necessarily indicative of future results. This communication may contain links to third party websites which are not under the control of and are not maintained by ION Energy Group, and ION Energy Group is not responsible for their content.

Weather Storage Model - Next 4 Week Forecast

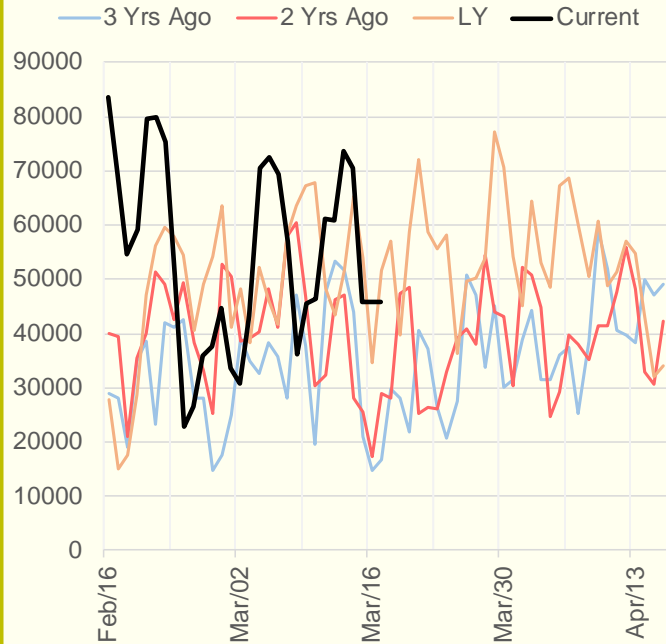


The risk of trading futures and options and other derivatives involves a substantial risk of loss and is not suitable for all persons. Each person must consider whether a particular trade, combination of trades, or strategy is suitable for that person's financial means and objectives. Past results are not necessarily indicative of future results. This communication may contain links to third party websites which are not under the control of and are not maintained by ION Energy Group, and ION Energy Group is not responsible for their content.

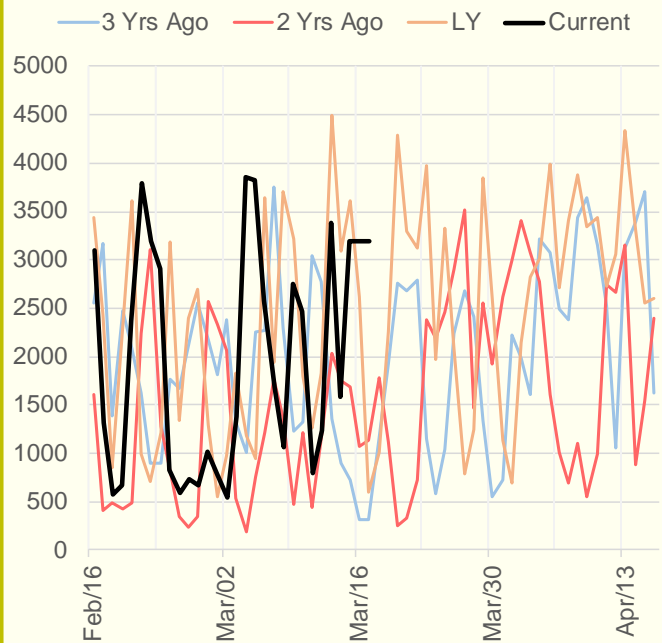
NRC Nuclear Daily Output



US Wind



CALI Wind



TEXAS Wind

