

	Current	Δ from YD	Δ from 7D Avg
Nat Gas Prompt	\$ 4.86	▼ \$ (0.13)	▲ \$ 0.12

	Current	Δ from YD	Δ from 7D Avg
WTI Prompt	\$ 103.82	▲ \$ 0.84	▲ \$ 0.2

	Current	Δ from YD	Δ from 7D Avg
Brent Prompt	\$ 107.45	▲ \$ 0.81	▲ \$ 0.4

Page Menu

[Short-term Weather Model Outlooks](#)

[Lower 48 Component Models](#)

[Regional S/D Models Storage Projection](#)

[Weather Model Storage Projection](#)

[Supply – Demand Trends](#)

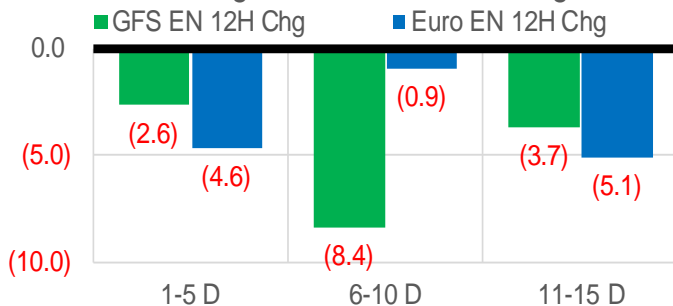
[Nat Gas Options Volume and Open Interest](#)

[Nat Gas Futures Open Interest](#)

[Price Summary](#)

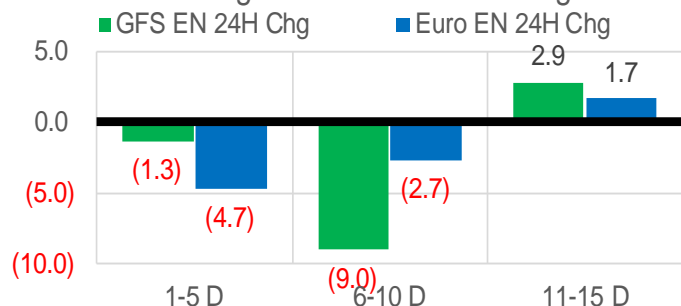
Vs. 12H Ago

L48 Region - 00z TDD vs 12H Ago



Vs. 24H Ago

L48 Region - 00z TDD vs 24H Ago



	Current	Δ from YD	Δ from 7D Avg
US Dry Production	94.3	▲ 0.05	▲ 0.73

	Current	Δ from YD	Δ from 7D Avg
US Power Burns	24.7	▲ 0.10	▼ -1.73

	Current	Δ from YD	Δ from 7D Avg
US ResComm	21.2	▲ 0.70	▼ -10.72

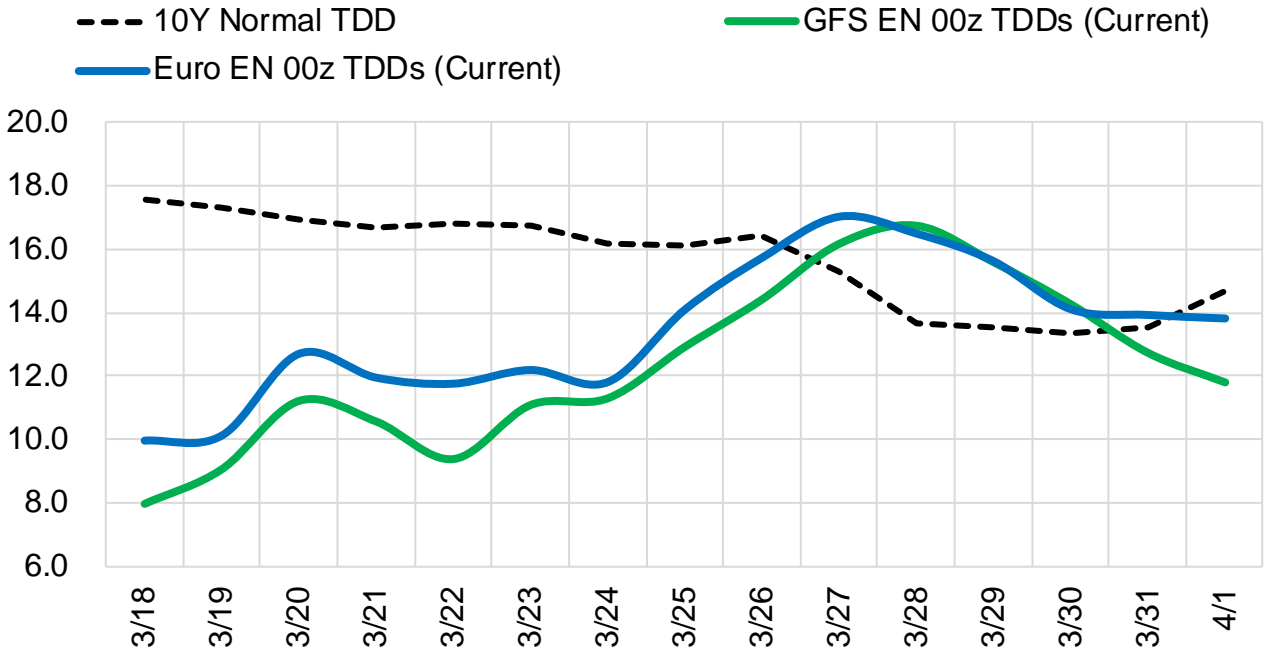
	Current	Δ from YD	Δ from 7D Avg
Canadian Imports	4.6	▼ -0.21	▼ -0.66

	Current	Δ from YD	Δ from 7D Avg
Net LNG Exports	12.7	▼ -0.06	▼ -0.15

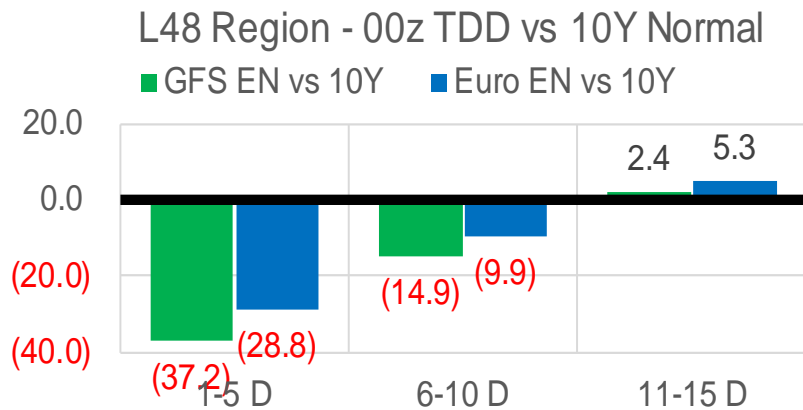
	Current	Δ from YD	Δ from 7D Avg
Mexican Exports	6.6	▼ -0.03	▲ 0.05

Short-term Weather Model Outlooks (00z)

L48 Region



Vs. 10Y Normal



Source: WSI, Bloomberg

Lower 48 Component Models

Daily Balances

	12-Mar	13-Mar	14-Mar	15-Mar	16-Mar	17-Mar	18-Mar	DoD	vs. 7D
Lower 48 Dry Production	93.0	93.5	93.3	94.3	94.0	94.2	94.3	▲ 0.1	▲ 0.6
Canadian Imports	5.8	5.8	5.5	4.8	4.7	4.8	4.6	▼ -0.2	▼ -0.6
L48 Power	28.8	27.0	26.5	25.4	24.4	24.6	24.7	▲ 0.1	▼ -1.4
L48 Residential & Commercial	47.6	40.6	28.9	24.3	21.7	20.5	21.2	▲ 0.7	▼ -9.4
L48 Industrial	23.0	21.8	20.7	20.1	20.0	20.1	20.4	▲ 0.4	▼ -0.5
L48 Lease and Plant Fuel	5.1	5.1	5.1	5.1	5.1	5.1	5.1	▲ 0.0	▲ 0.0
L48 Pipeline Distribution	4.0	3.5	2.9	2.6	2.4	2.4	2.4	▲ 0.0	▼ -0.6
L48 Regional Gas Consumption	108.4	98.0	84.1	77.6	73.7	72.6	73.8	▲ 1.2	▼ -11.9
Net LNG Delivered	13.43	13.22	12.62	12.59	12.74	12.79	12.73	▼ -0.1	▼ -0.2
Total Mexican Exports	6.3	6.2	6.5	6.7	6.6	6.6	6.6	▼ 0.0	▲ 0.1
Implied Daily Storage Activity	-29.4	-18.1	-4.5	2.2	5.7	7.0	5.8		
EIA Reported Daily Storage Activity									
Daily Model Error									

EIA Storage Week Balances

	11-Feb	18-Feb	25-Feb	4-Mar	11-Mar	18-Mar	WoW	vs. 4W
Lower 48 Dry Production	91.5	95.6	94.2	94.1	94.7	93.6	▼ -1.1	▼ -1.1
Canadian Imports	7.1	6.2	6.4	5.9	5.2	5.3	▲ 0.1	▼ -0.7
L48 Power	29.4	26.8	27.3	28.2	26.6	26.5	▼ -0.2	▼ -0.8
L48 Residential & Commercial	45.8	40.3	41.4	38.6	33.6	31.9	▼ -1.7	▼ -6.6
L48 Industrial	24.6	26.1	26.2	23.7	23.2	21.2	▼ -2.0	▼ -3.6
L48 Lease and Plant Fuel	5.0	5.2	5.1	5.1	5.2	5.1	▼ -0.1	▼ -0.1
L48 Pipeline Distribution	3.5	3.2	3.2	3.3	3.1	3.0	▼ -0.1	▼ -0.2
L48 Regional Gas Consumption	108.3	101.6	103.2	98.9	91.7	87.7	▼ -4.0	▼ -11.2
Net LNG Exports	12.4	13.0	11.7	12.5	12.8	12.9	▲ 0.1	▲ 0.4
Total Mexican Exports	6.1	6.1	6.1	6.4	6.6	6.5	▼ 0.0	▲ 0.3
Implied Daily Storage Activity	-28.2	-18.9	-20.5	-17.9	-11.2	-8.3	2.9	
EIA Reported Daily Storage Activity	-27.1	-18.4	-19.9	-17.7	-11.3			
Daily Model Error	-1.0	-0.4	-0.6	-0.2	0.1			

Monthly Balances

	2Yr Ago Mar-20	LY Mar-21	Nov-21	Dec-21	Jan-22	Feb-22	MTD Mar-22	MoM	vs. LY
Lower 48 Dry Production	94.2	91.3	95.7	96.2	94.3	93.5	94.2	▲ 0.8	▲ 2.9
Canadian Imports	4.1	4.8	5.3	4.8	6.7	6.6	5.2	▼ -1.4	▲ 0.5
L48 Power	28.3	24.5	29.2	28.5	30.7	28.2	26.5	▼ -1.7	▲ 2.0
L48 Residential & Commercial	27.6	28.9	28.4	33.8	49.1	43.0	32.4	▼ -10.6	▲ 3.5
L48 Industrial	22.3	19.3	23.0	22.9	26.4	25.6	22.2	▼ -3.3	▲ 3.0
L48 Lease and Plant Fuel	5.1	5.0	5.3	5.3	5.2	5.1	5.1	▲ 0.0	▲ 0.2
L48 Pipeline Distribution	2.9	2.8	2.9	3.2	3.9	3.4	3.1	▼ -0.3	▲ 0.3
L48 Regional Gas Consumption	86.2	80.4	88.8	93.7	115.2	105.3	89.4	▼ -15.9	▲ 9.0
Net LNG Exports	8.5	11.1	11.4	12.1	12.4	12.4	12.7	▲ 0.3	▲ 1.6
Total Mexican Exports	5.4	6.5	6.1	6.2	6.3	6.2	6.6	▲ 0.4	▲ 0.1
Implied Daily Storage Activity	-1.9	-2.0	-5.3	-11.0	-32.9	-23.8	-9.2		
EIA Reported Daily Storage Activity									
Daily Model Error									

Source: Bloomberg, analytix.ai

Daily Average Generation Data

Nuclear Generation Daily Average - GWh (NRC)

	10-Mar	11-Mar	12-Mar	13-Mar	14-Mar	15-Mar	16-Mar	DoD	vs. 7D
NRC Nuclear Daily Output	81.9	81.5	80.3	81.1	81.0	80.9	80.8	-0.1	-0.3
NRC Nuclear Max Capacity	104.9	104.9	104.9	104.9	104.9	104.9	104.9	0.0	0.0
NRC Nuclear Outage	23.0	23.4	24.6	23.8	23.8	24.0	24.0	0.1	0.3
NRC % Nuclear Cap Utilization	83.3	82.9	81.6	82.4	82.4	82.3	82.2	-0.1	-0.3

Wind Generation Daily Average - MWh (EIA)

	10-Mar	11-Mar	12-Mar	13-Mar	14-Mar	15-Mar	16-Mar	DoD	vs. 7D
CALI Wind	2467	802	1237	3389	1578	3188	3754	566	1644
TEXAS Wind	13224	17888	13743	21867	20939	10179	17943	7763	1636
US Wind	46546	61235	60808	73690	70649	45783	64881	19098	5095

Generation Daily Average - MWh (EIA)

	10-Mar	11-Mar	12-Mar	13-Mar	14-Mar	15-Mar	16-Mar	DoD	vs. 7D
US Wind	46546	61235	60808	73690	70649	45783	64881	19098	5095
US Solar	12887	13471	14659	11009	17029	13667	13146	-522	-641
US Petroleum	822	1089	901	1129	1092	1044	785	-259	-227
US Other	6926	6123	6525	7303	7137	6842	7032	190	223
US Coal	95472	93232	97591	90204	84060	86403	75626	-10777	-15534
US Nuke	86042	85197	84459	84752	85050	84781	84847	66	-200
US Hydro	37038	36301	36439	30259	34993	34635	33481	-1154	-1463
US Gas	155847	151561	156209	135931	128486	136514	124604	-11910	-19487

See National Wind and Nuclear daily charts

Source: Bloomberg, analytix.ai

Storage Week Average Generation Data

Nuclear Generation Weekly Average - GWh (NRC)

	11-Feb	18-Feb	25-Feb	4-Mar	11-Mar	18-Mar	WoW	WoW Bcf/d Impact
NRC Nuclear Daily Output	87.6	88.2	86.9	85.8	82.3	80.9	-1.4	0.3
NRC Nuclear Max Capacity	104.9	104.9	104.9	104.9	104.9	104.9	0.0	
NRC Nuclear Outage	17.3	16.7	18.0	19.1	22.5	23.9	1.4	
NRC % Nuclear Cap Utilization	89.1	89.7	88.3	87.2	83.7	82.3	-1.4	

Wind Generation Weekly Average - MWh (EIA)

	11-Feb	18-Feb	25-Feb	4-Mar	11-Mar	18-Mar	WoW	WoW Bcf/d Impact
CALI Wind	999	1900	2049	815	2602	2529	-73	0.0
TEXAS Wind	9259	16874	13068	6269	14469	17214	2745	-0.5
US Wind	53792	63113	60313	36019	56872	63132	6261	-1.1
							11%	
						0.2		

Generation Weekly Average - MWh (EIA)

	11-Feb	18-Feb	25-Feb	4-Mar	11-Mar	18-Mar	WoW	WoW Bcf/d Impact
						est.		
US Wind	53792	63113	60313	36019	56872	63132	6261	-1.1
US Solar	12287	12313	11899	13919	12543	13732	1189	-0.2
US Petroleum	3554	4126	2961	3130	1754	975	-779	0.1
US Other	9373	9134	8211	7510	6577	6856	279	-0.1
US Coal	113776	101700	99888	103399	86717	86106	-611	0.1
US Nuke	92640	92758	91458	90165	86461	84848	-1613	0.3
US Hydro	32213	31952	33214	32196	34066	34227	161	0.0
US Gas	162266	137939	147276	158688	140114	136844	-3270	0.6

See National Wind and Nuclear daily charts

Source: Bloomberg, analytix.ai

Monthly Average Generation Data

Nuclear Generation Monthly Average - GWh (NRC)

	2Yr Ago	LY	MTD						
	Same 30 days	Same 30 days	Dec-21	Jan-22	Feb-22	Mar-22	Last 30 days	MoM (MTD vs LY)	Last 30 days YoY
NRC Nuclear Daily Output	85.6	85.2	90.3	90.2	87.6	82.2	84.0	-5.3	-1.1
NRC Nuclear Max Capacity	104.9	104.9	104.9	104.9	104.9	104.9	104.9	0.0	0.0
NRC Nuclear Outage	19.3	19.7	14.6	14.7	17.3	22.7	20.8	5.3	1.1
NRC % Nuclear Cap Utilization	87.0	86.6	91.8	91.7	89.0	83.6	85.4	-5.4	-1.1

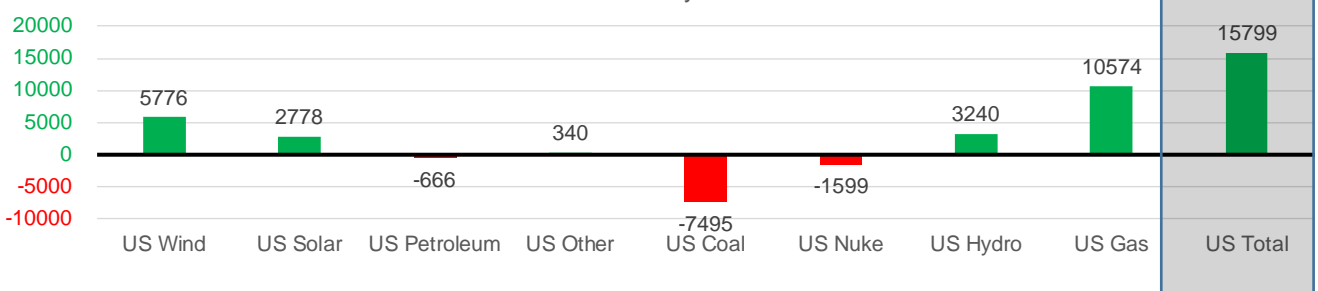
Wind Generation Monthly Average - MWh (EIA)

	2Yr Ago	LY	MTD						
	Same 30 days	Same 30 days	Dec-21	Jan-22	Feb-22	Mar-22	Last 30 days	MoM (MTD vs LY)	Last 30 days YoY
CALI Wind	1191	2046	1482	1244	1559	2354	2034	795	-11
TEXAS Wind	10191	12745	12927	11355	12294	14430	13114	2136	370
US Wind	39520	49181	54708	51045	56538	56246	54957	-292	5776

Generation Monthly Average - MWh (EIA)

	2Yr Ago	LY	MTD						
	Same 30 days	Same 30 days	Dec-21	Jan-22	Feb-22	Mar-22	Last 30 days	MoM (MTD vs LY)	Last 30 days YoY
US Wind	39520	49181	54708	51045	56538	56246	54957	▼-1289.0	▲ 5776
US Solar	7093	10169	7375	9476	12088	13394	12948	▼-446.6	▲ 2778
US Petroleum	3256	2852	3135	5021	3449	1609	2186	▲ 577	▼-666
US Other	7129	6973	8222	8792	8831	6726	7312	▲ 586	▲ 340
US Coal	75430	101035	81462	117971	106587	87502	93540	▲ 6038	▼-7495
US Nuke	86557	89883	95449	95259	92275	86257	88284	▲ 2027	▼-1599
US Hydro	34067	30127	30824	34102	32212	33903	33367	▼-536	▲ 3240
US Gas	158388	133799	152639	164023	152048	139214	144373	▲ 6957	▲ 10574
US Total	409768	422337	433931	485813	464579	426463	438137	▲ 15203	▲ 15799

Last 30 days YoY



See National Wind and Nuclear daily charts

Source: Bloomberg, analytix.ai

Regional S/D Models Storage Projection

Week Ending 18-Mar

	Daily Raw Storage	Daily Adjustment Factor	Daily Average Storage Activity (Adjusted) *	Weekly Adjusted Storage Activity
L48	-7.9	0.0	-7.9	-55
East	-5.8	2.2	-3.6	-25
Midwest	-2.2	-0.2	-2.4	-17
Mountain	3.6	-3.8	-0.2	-1
South Central	-4.4	2.2	-2.2	-15
Pacific	0.9	-0.4	0.5	4

*Adjustment Factor is calculated based on historical regional deltas

U.S. underground natural gas storage facilities by type (July 2015)

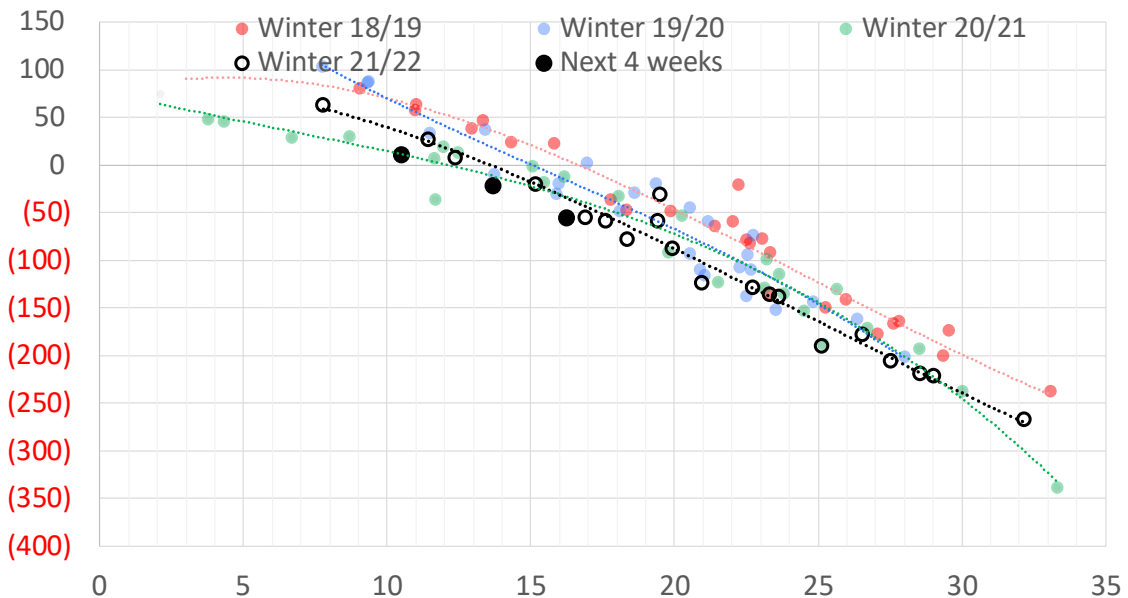


Weather Model Storage Projection

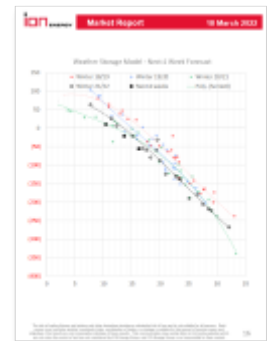
Next report and beyond

Week Ending	GWDDs	Week Storage Projection
18-Mar	16	-55
25-Mar	10	11
01-Apr	14	-21
08-Apr	#N/A	#N/A

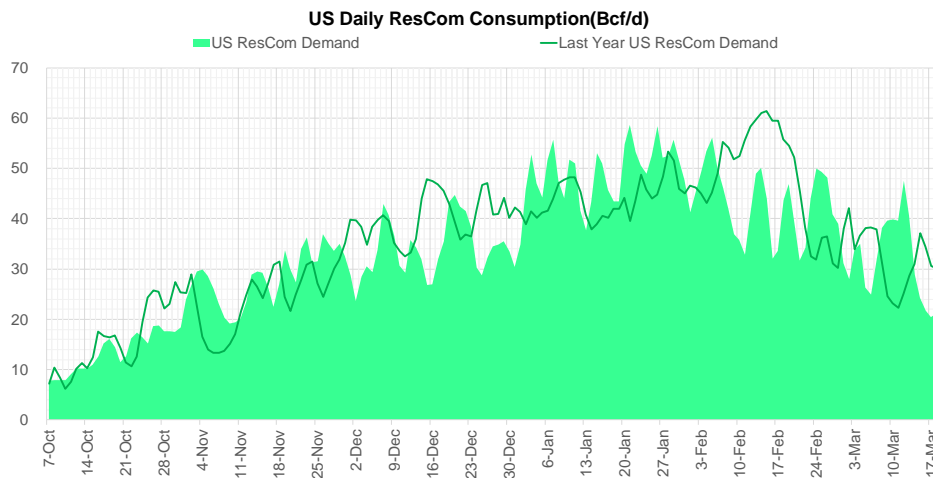
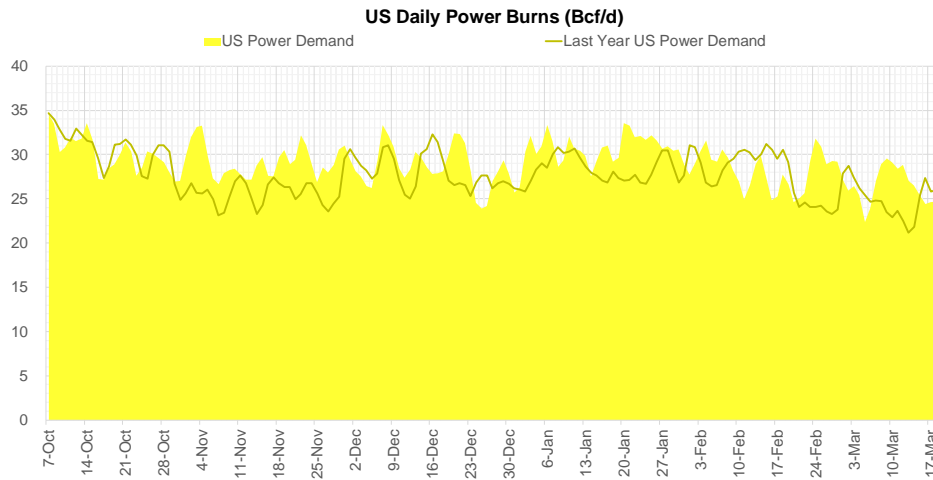
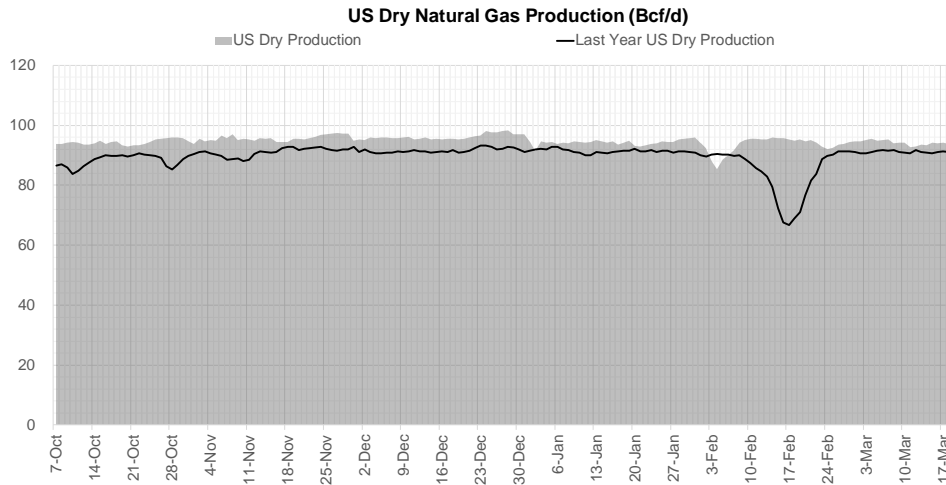
Weather Storage Model - Next 4 Week Forecast



Go to larger image



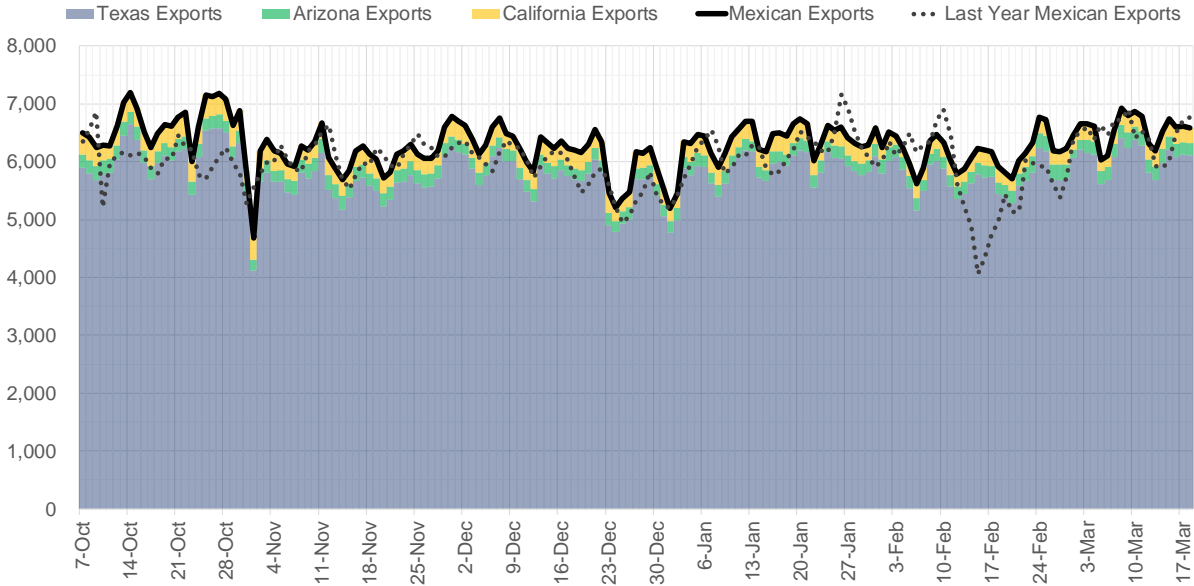
Supply – Demand Trends



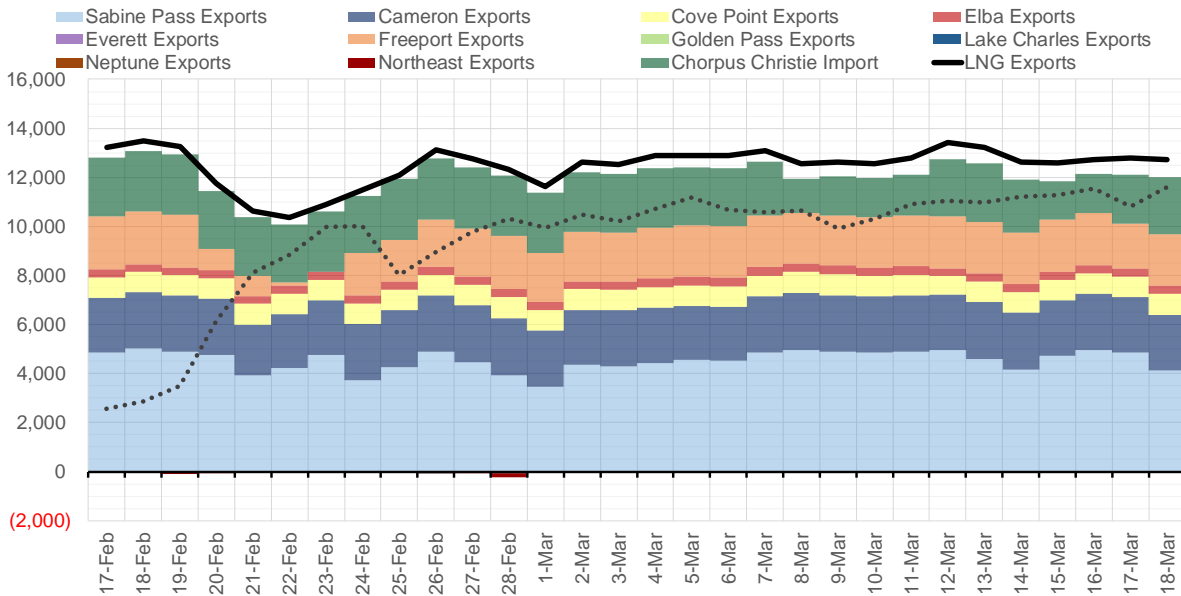
Source: Bloomberg

The risk of trading futures and options and other derivatives involves a substantial risk of loss and is not suitable for all persons. Each person must consider whether a particular trade, combination of trades, or strategy is suitable for that person's financial means and objectives. Past results are not necessarily indicative of future results. This communication may contain links to third party websites which are not under the control of and are not maintained by ION Energy Group, and ION Energy Group is not responsible for their content.

Mexican Exports (MMcf/d)



Net LNG Exports - Last 30 days (MMcf/d)



Source: Bloomberg

The risk of trading futures and options and other derivatives involves a substantial risk of loss and is not suitable for all persons. Each person must consider whether a particular trade, combination of trades, or strategy is suitable for that person's financial means and objectives. Past results are not necessarily indicative of future results. This communication may contain links to third party websites which are not under the control of and are not maintained by ION Energy Group, and ION Energy Group is not responsible for their content.

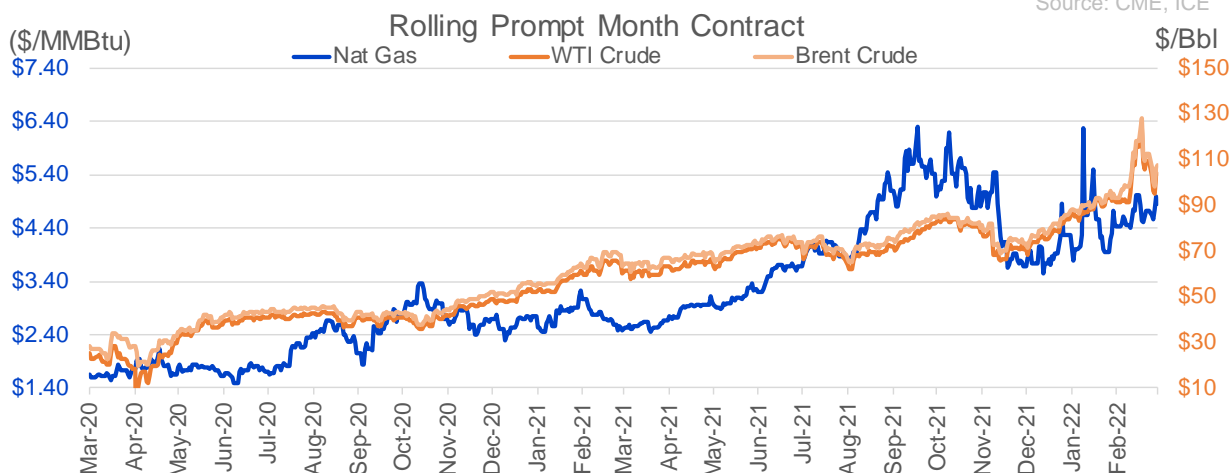
Nat Gas Options Volume and Open Interest CME and ICE Combined

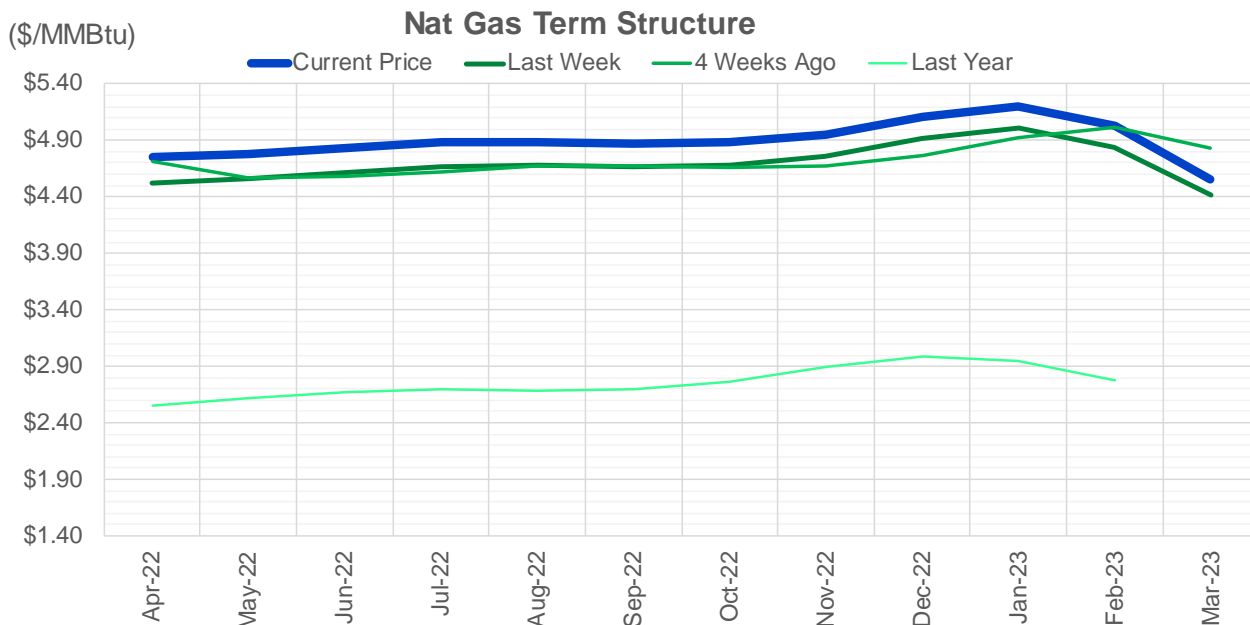
CONTRACT MONTH	CONTRACT YEAR	PUT/CALL	STRIKE	CUMULATIVE VOL	CONTRACT MONTH	CONTRACT YEAR	PUT/CALL	STRIKE	CUMULATIVE OI
4	2022	C	5.00	8342	4	2022	P	3.50	34519
4	2022	C	5.25	4809	4	2022	C	5.00	33796
5	2022	P	4.00	4347	4	2022	C	4.75	30326
4	2022	C	5.50	4325	4	2022	P	3.00	28951
5	2022	P	4.25	3480	10	2022	C	6.00	27336
10	2022	C	6.00	2924	10	2022	C	5.00	26214
12	2022	P	5.00	2886	4	2022	P	4.00	25222
12	2022	P	5.25	2886	4	2022	P	3.75	24212
4	2022	C	5.10	2864	6	2022	C	6.00	23036
4	2022	P	4.25	2521	5	2022	P	3.00	22965
4	2022	P	4.00	2085	5	2022	C	5.00	22704
4	2022	C	4.90	2044	5	2022	P	4.00	22419
4	2022	C	6.00	1791	4	2022	C	6.00	22187
6	2022	C	7.00	1777	7	2022	C	6.00	21424
4	2022	C	5.75	1629	5	2022	C	6.00	20751
5	2022	C	6.00	1594	9	2022	C	6.00	20372
5	2022	P	4.50	1590	5	2022	P	2.50	19898
7	2022	P	4.00	1534	8	2022	C	6.00	19497
5	2022	P	4.75	1407	5	2022	P	3.50	19430
4	2022	P	4.50	1389	6	2022	P	4.00	19065
7	2022	C	6.00	1342	4	2022	P	4.50	18857
5	2022	C	5.25	1209	10	2022	P	3.00	18647
8	2022	C	6.00	1013	6	2022	C	5.00	18344
10	2022	P	4.00	1010	4	2022	C	5.50	18319
11	2022	P	4.00	1000	12	2022	C	5.00	17968
12	2022	P	4.00	1000	6	2022	P	3.00	17945
4	2022	P	4.40	969	4	2022	C	4.50	17754
5	2022	C	5.00	905	5	2022	P	2.75	17685
5	2022	C	6.50	904	4	2022	C	3.00	17511
5	2022	P	3.25	900	4	2022	P	2.50	17245
4	2022	C	7.00	872	4	2022	P	4.25	16760
6	2022	C	6.00	809	10	2022	C	7.00	16457
4	2022	P	4.10	805	7	2022	P	3.25	16411
12	2022	C	6.00	802	12	2022	C	6.00	15470
8	2022	C	5.00	801	9	2022	P	2.50	15386
7	2022	C	7.50	778	4	2022	C	8.00	15346
8	2022	P	4.00	749	6	2022	P	3.50	15149
6	2022	C	5.00	730	8	2022	P	3.00	15091
7	2022	P	4.50	728	4	2022	P	3.25	14884
7	2022	C	8.00	700	7	2022	P	3.00	14639
9	2022	P	4.00	700	10	2022	P	2.00	14421
6	2022	P	4.00	688	5	2022	C	7.00	14404
10	2022	C	5.25	610	1	2023	C	5.00	14379
1	2023	C	5.00	600	5	2022	P	3.75	14124
2	2023	C	5.00	600	6	2022	C	4.50	14048
3	2023	C	5.00	600	9	2022	P	2.75	13933
3	2023	C	20.00	600	6	2022	P	3.75	13867
6	2022	C	7.50	568	5	2022	C	3.00	13733
4	2022	C	8.00	563	7	2022	C	5.00	13555
					8	2022	C	7	13480

Source: CME, ICE

Nat Gas Futures Open Interest CME and ICE Combined

CME Henry Hub Futures (10,000 MMBtu)				ICE Henry Hub Futures Contract Equivalent (10,000 MM			
	Current	Prior	Daily Change		Current	Prior	Daily Change
APR 22	64079	66164	-2085	APR 22	72832	73375	-543
MAY 22	214849	209500	5349	MAY 22	79016	78067	950
JUN 22	68860	69223	-363	JUN 22	70436	70500	-65
JUL 22	88044	87879	165	JUL 22	66452	67165	-713
AUG 22	42832	43336	-504	AUG 22	60146	60093	52
SEP 22	74730	74219	511	SEP 22	63719	63420	299
OCT 22	82023	82385	-362	OCT 22	69828	68884	944
NOV 22	42695	42327	368	NOV 22	54125	54264	-140
DEC 22	44822	44826	-4	DEC 22	63171	63505	-334
JAN 23	58861	58288	573	JAN 23	63671	63278	393
FEB 23	19919	19623	296	FEB 23	46152	45925	227
MAR 23	38444	37767	677	MAR 23	51157	51153	4
APR 23	45774	45167	607	APR 23	49221	49139	82
MAY 23	25493	24714	779	MAY 23	44174	44071	103
JUN 23	15006	14484	522	JUN 23	41000	40960	40
JUL 23	11769	11931	-162	JUL 23	40352	40350	3
AUG 23	10884	9867	1017	AUG 23	39835	39797	39
SEP 23	12777	12770	7	SEP 23	39788	39750	38
OCT 23	25470	24401	1069	OCT 23	44137	44085	52
NOV 23	10384	10439	-55	NOV 23	40885	40730	156
DEC 23	14308	14315	-7	DEC 23	36331	36227	104
JAN 24	19042	18396	646	JAN 24	32354	32063	290
FEB 24	3782	3515	267	FEB 24	22760	22351	409
MAR 24	14147	14137	10	MAR 24	27287	27074	213
APR 24	7233	7218	15	APR 24	20511	20481	30
MAY 24	2258	2258	0	MAY 24	19678	19746	-68
JUN 24	1125	1117	8	JUN 24	19453	19447	7
JUL 24	1373	1363	10	JUL 24	19978	20039	-61
AUG 24	1056	1051	5	AUG 24	20036	20023	14
SEP 24	1173	1163	10	SEP 24	19495	19567	-72





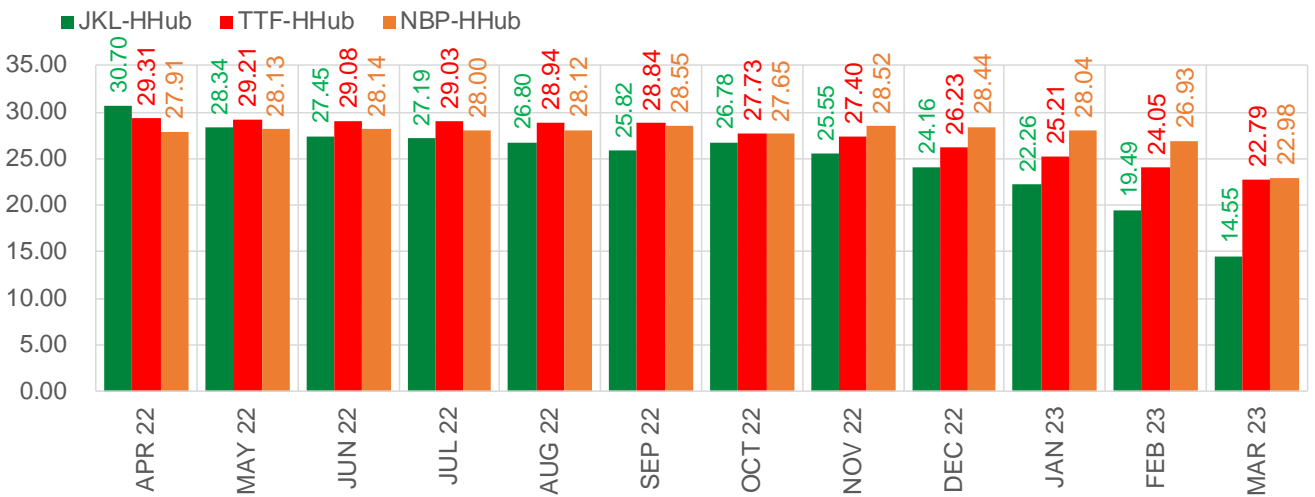
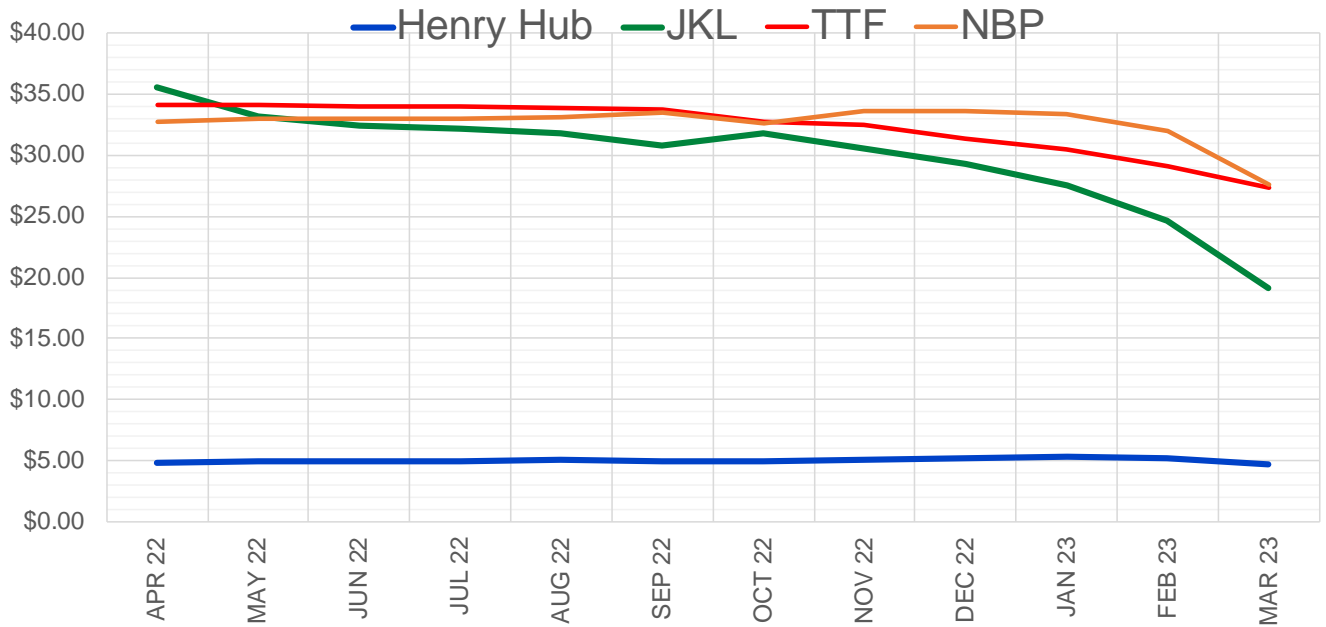
	Apr-22	May-22	Jun-22	Jul-22	Aug-22	Sep-22	Oct-22	Nov-22	Dec-22	Jan-23	Feb-23	Mar-23
Current Price	\$4.748	\$4.784	\$4.829	\$4.880	\$4.888	\$4.870	\$4.885	\$4.956	\$5.104	\$5.198	\$5.027	\$4.558
Last Week	\$4.526	\$4.561	\$4.610	\$4.670	\$4.682	\$4.666	\$4.683	\$4.765	\$4.914	\$5.010	\$4.844	\$4.417
vs. Last Week	\$0.222	\$0.223	\$0.219	\$0.210	\$0.206	\$0.204	\$0.202	\$0.191	\$0.190	\$0.188	\$0.183	\$0.141
4 Weeks Ago	\$4.717	\$4.572	\$4.582	\$4.623	\$4.671	\$4.678	\$4.659	\$4.679	\$4.766	\$4.918	\$5.015	\$4.833
vs. 4 Weeks Ago	\$0.031	\$0.212	\$0.247	\$0.257	\$0.217	\$0.192	\$0.226	\$0.277	\$0.338	\$0.280	\$0.012	-\$0.275
Last Year	\$2.528	\$2.555	\$2.613	\$2.675	\$2.691	\$2.680	\$2.694	\$2.767	\$2.897	\$2.991	\$2.942	\$2.778
vs. Last Year	\$2.220	\$2.229	\$2.216	\$2.205	\$2.197	\$2.190	\$2.191	\$2.189	\$2.207	\$2.207	\$2.085	\$1.780

	Units	Cash Settled	Prompt Settle	Cash to Prompt
AGT Citygate	\$/MMBtu	4.00	4.85	0.85
TETCO M3	\$/MMBtu	3.88	4.07	0.19
FGT Zone 3	\$/MMBtu	3.97	4.74	0.77
Zone 6 NY	\$/MMBtu	3.97	4.10	0.13
Chicago Citygate	\$/MMBtu	4.50	4.51	0.01
Michcon	\$/MMBtu	4.58	4.49	-0.09
Columbia TCO Pool	\$/MMBtu	3.94	4.11	0.17
Ventura	\$/MMBtu	4.28	4.45	0.17
Rockies/Opal	\$/MMBtu	4.17	4.23	0.06
El Paso Permian Basin	\$/MMBtu	3.76	4.01	0.25
Socal Citygate	\$/MMBtu	4.31	4.27	-0.04
Malin	\$/MMBtu	4.17	4.27	0.10
Houston Ship Channel	\$/MMBtu	4.31	4.47	0.17
Henry Hub Cash	\$/MMBtu	4.79	4.43	-0.36
AECO Cash	C\$/GJ	3.79	3.46	-0.33
Station2 Cash	C\$/GJ	3.69	4.16	0.47
Dawn Cash	C\$/GJ	4.64	4.54	-0.10

Source: CME, Bloomberg

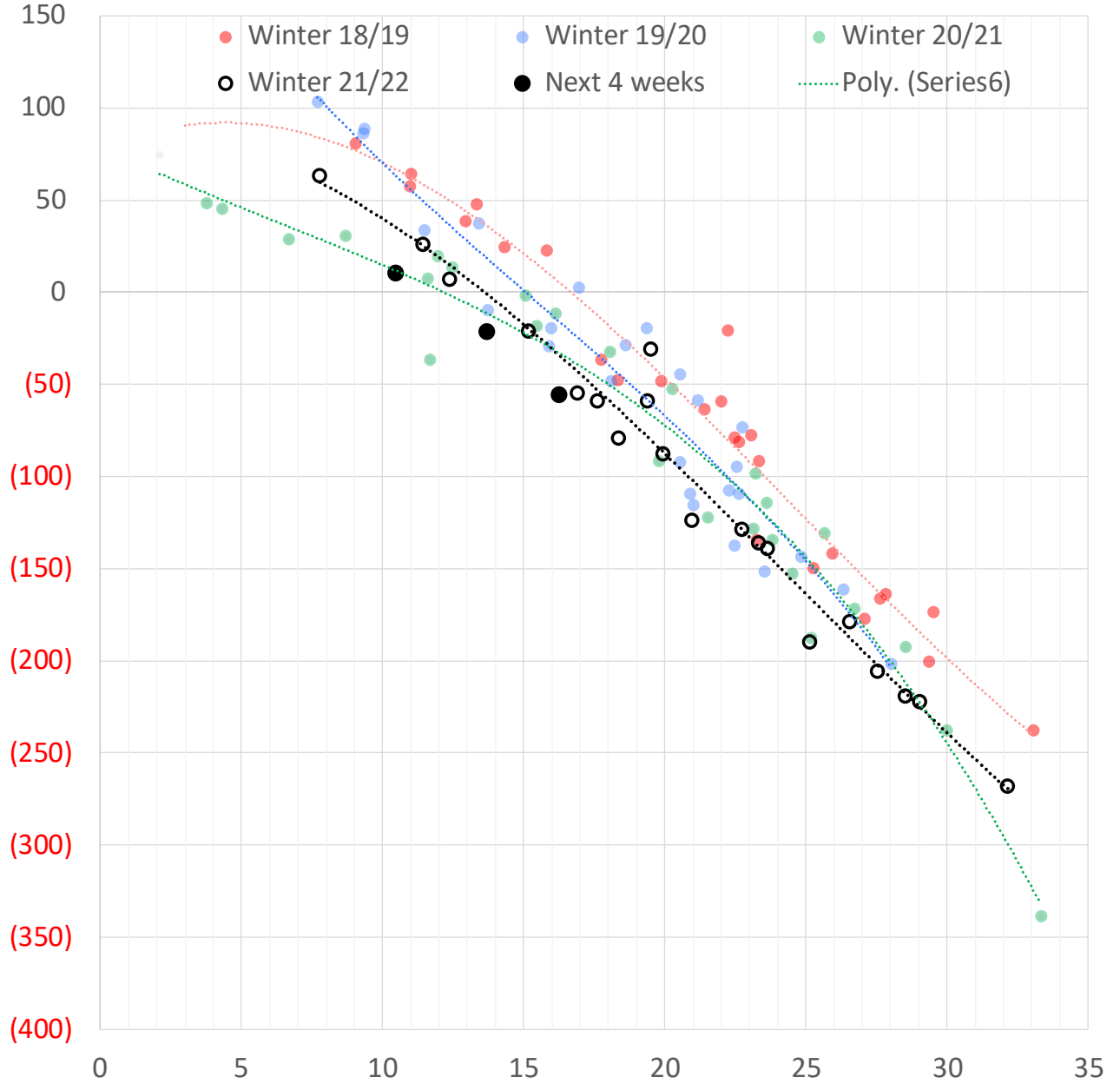
	Units	Current Price	vs. Last Week	vs. 4 Weeks Ago	vs. Last Year
NatGas Jul21/Oct21	\$/MMBtu	2.224	▲ 0.000	▲ 0.000	▲ 2.204
NatGas Oct21/Nov21	\$/MMBtu	0.361	▲ 0.000	▲ 0.000	▲ 0.285
NatGas Oct21/Jan22	\$/MMBtu	-1.817	▲ 0.000	▲ 0.000	▼ -2.124
NatGas Apr22/Oct22	\$/MMBtu	0.125	▼ -0.036	▼ -0.008	▲ 0.070
WTI Crude	\$/Bbl	102.98	▼ -3.040	▲ 11.220	▲ 42.980
Brent Crude	\$/Bbl	106.64	▼ -2.690	▲ 13.670	▲ 43.360
Fuel Oil, NY Harbour 1%	\$/Bbl	97.18	▲ 0.000	▲ 0.000	▲ 0.000
Heating Oil	cents/Gallon	348.74	▲ 19.120	▲ 70.120	▲ 170.320
Propane, Mt. Bel	cents/Gallon	1.40	▼ -0.059	▲ 0.124	▲ 0.485
Ethane, Mt. Bel	cents/Gallon	0.42	▲ 0.006	▲ 0.031	▲ 0.207
Coal, PRB	\$/MTon	12.30	▲ 0.000	▲ 0.000	▲ 0.000
Coal, PRB	\$/MMBtu	0.70			
Coal, ILB	\$/MTon	31.05	▲ 0.000	▲ 0.000	▲ 0.000
Coal, ILB	\$/MMBtu	1.32			

Nat Gas Term Structure (\$MMBTU)



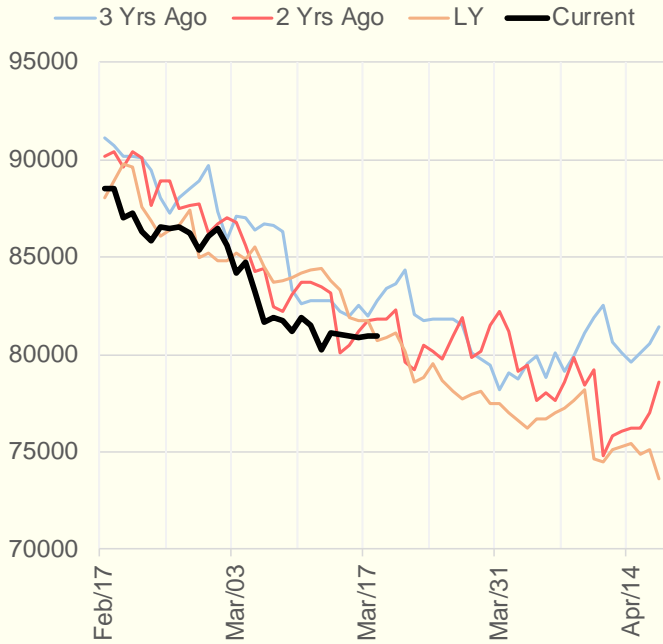
	APR 22	MAY 22	JUN 22	JUL 22	AUG 22	SEP 22	OCT 22	NOV 22	DEC 22	JAN 23	FEB 23	MAR 23
Henry Hub	\$4.858	\$4.893	\$4.942	\$4.990	\$5.004	\$4.976	\$4.994	\$5.063	\$5.207	\$5.299	\$5.121	\$4.631
JKL	\$35.555	\$33.235	\$32.395	\$32.175	\$31.800	\$30.800	\$31.775	\$30.615	\$29.365	\$27.555	\$24.615	\$19.185
JKL-HHub	\$30.697	\$28.342	\$27.453	\$27.185	\$26.796	\$25.824	\$26.781	\$25.552	\$24.158	\$22.256	\$19.494	\$14.554
TTF	\$34.171	\$34.106	\$34.018	\$34.019	\$33.948	\$33.811	\$32.726	\$32.459	\$31.433	\$30.513	\$29.171	\$27.418
TTF-HHub	\$29.313	\$29.213	\$29.076	\$29.029	\$28.944	\$28.835	\$27.732	\$27.396	\$26.226	\$25.214	\$24.050	\$22.787
NBP	\$32.771	\$33.023	\$33.080	\$32.991	\$33.126	\$33.530	\$32.643	\$33.587	\$33.642	\$33.341	\$32.054	\$27.613
NBP-HHub	\$27.913	\$28.130	\$28.138	\$28.001	\$28.122	\$28.554	\$27.649	\$28.524	\$28.435	\$28.042	\$26.933	\$22.982

Weather Storage Model - Next 4 Week Forecast

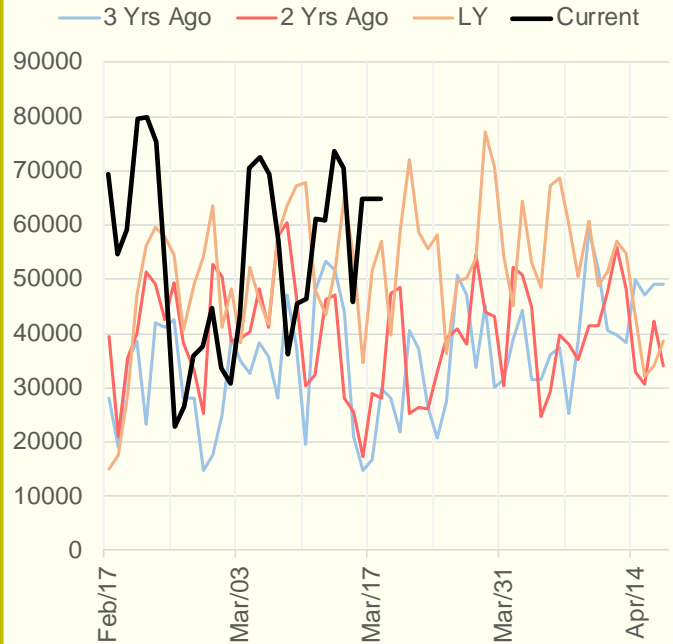


The risk of trading futures and options and other derivatives involves a substantial risk of loss and is not suitable for all persons. Each person must consider whether a particular trade, combination of trades, or strategy is suitable for that person's financial means and objectives. Past results are not necessarily indicative of future results. This communication may contain links to third party websites which are not under the control of and are not maintained by ION Energy Group, and ION Energy Group is not responsible for their content.

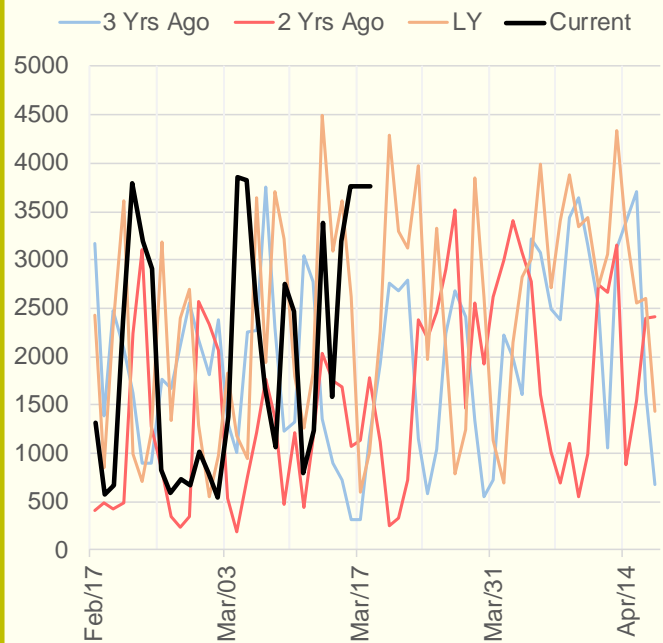
NRC Nuclear Daily Output



US Wind



CALI Wind



TEXAS Wind

