

	Current	Δ from YD	Δ from 7D Avg
Nat Gas Prompt	\$ 4.89	▲ \$ 0.02	▲ \$ 0.09

	Current	Δ from YD	Δ from 7D Avg
WTI Prompt	\$ 108.50	▲ \$ 3.80	▲ \$ 6.8

	Current	Δ from YD	Δ from 7D Avg
Brent Prompt	\$ 112.21	▲ \$ 4.28	▲ \$ 7.2

Page Menu

[Short-term Weather Model Outlooks](#)

[Lower 48 Component Models](#)

[Regional S/D Models Storage Projection](#)

[Weather Model Storage Projection](#)

[Supply – Demand Trends](#)

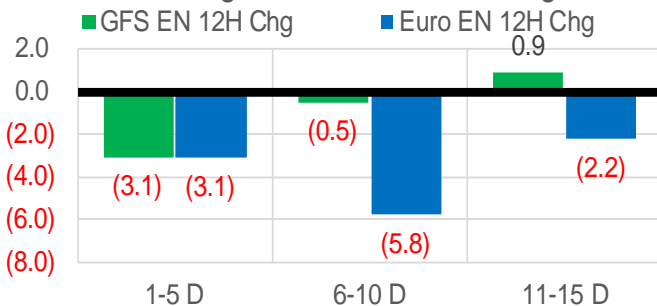
[Nat Gas Options Volume and Open Interest](#)

[Nat Gas Futures Open Interest](#)

[Price Summary](#)

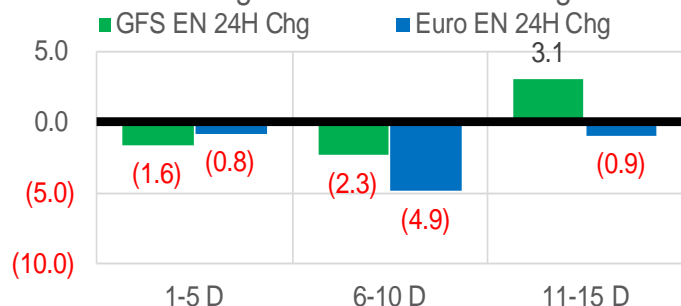
Vs. 12H Ago

L48 Region - 00z TDD vs 12H Ago



Vs. 24H Ago

L48 Region - 00z TDD vs 24H Ago



	Current	Δ from YD	Δ from 7D Avg
US Dry Production	95.2	▲ 0.28	▲ 1.02

	Current	Δ from YD	Δ from 7D Avg
US Power Burns	25.4	▲ 1.68	▼ -0.04

	Current	Δ from YD	Δ from 7D Avg
US ResComm	21.8	▼ -2.08	▼ -1.78

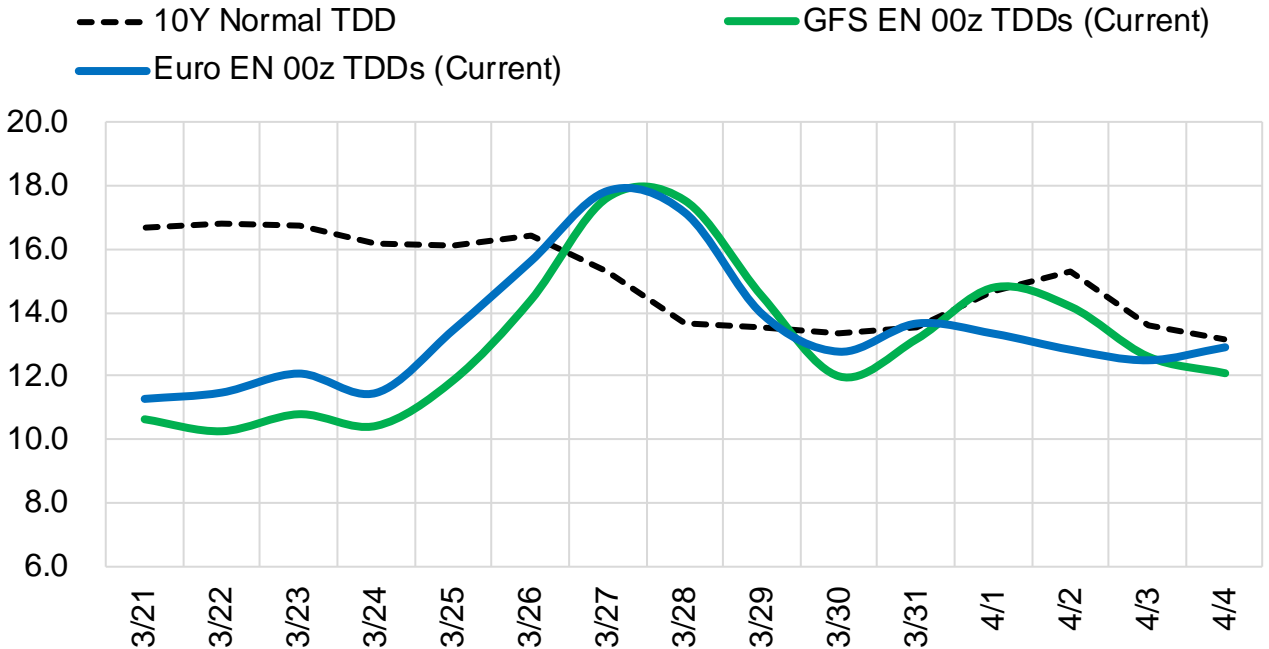
	Current	Δ from YD	Δ from 7D Avg
Canadian Imports	4.6	▲ 0.01	▼ -0.20

	Current	Δ from YD	Δ from 7D Avg
Net LNG Exports	13.5	▲ 0.05	▲ 0.66

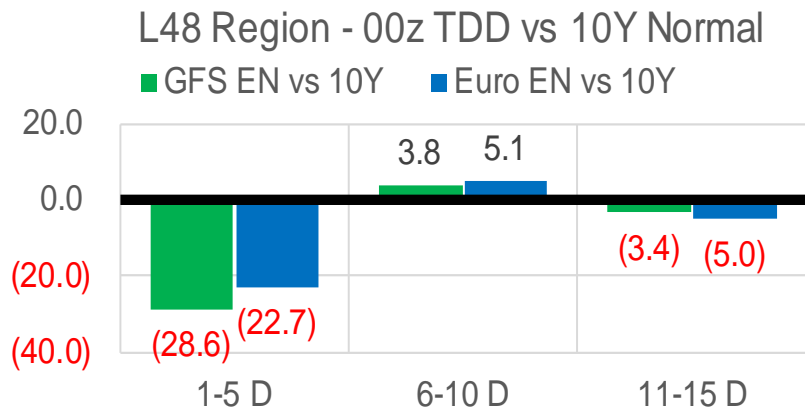
	Current	Δ from YD	Δ from 7D Avg
Mexican Exports	6.3	▲ 0.13	▼ -0.21

Short-term Weather Model Outlooks (00z)

L48 Region



Vs. 10Y Normal



Source: WSI , Bloomberg

Lower 48 Component Models

Daily Balances

	15-Mar	16-Mar	17-Mar	18-Mar	19-Mar	20-Mar	21-Mar	DoD	vs. 7D
Lower 48 Dry Production	94.1	94.5	94.0	94.1	94.7	95.0	95.2	▲ 0.3	▲ 0.8
Canadian Imports	4.8	4.7	4.7	4.7	4.7	4.6	4.6	▲ 0.0	▼ -0.1
L48 Power	26.4	25.1	25.5	25.0	24.9	23.7	25.4	▲ 1.7	▲ 0.3
L48 Residential & Commercial	24.4	21.9	20.5	21.5	23.7	23.9	21.8	▼ -2.1	▼ -0.9
L48 Industrial	18.6	18.4	18.3	18.5	18.9	18.7	18.7	▼ -0.1	▲ 0.1
L48 Lease and Plant Fuel	5.1	5.1	5.1	5.1	5.2	5.2	5.2	▼ 0.0	▲ 0.0
L48 Pipeline Distribution	2.7	2.5	2.4	2.4	2.5	2.5	2.5	▼ 0.0	▼ 0.0
L48 Regional Gas Consumption	77.2	73.0	71.8	72.6	75.2	74.0	73.5	▼ -0.5	▼ -0.4
Net LNG Delivered	12.60	12.76	12.57	12.39	13.77	13.49	13.54	▲ 0.0	▲ 0.6
Total Mexican Exports	6.7	6.6	6.7	6.7	6.4	6.2	6.3	▲ 0.1	▼ -0.2
Implied Daily Storage Activity	2.4	6.9	7.7	7.1	4.0	5.9	6.4		
EIA Reported Daily Storage Activity									
Daily Model Error									

EIA Storage Week Balances

	11-Feb	18-Feb	25-Feb	4-Mar	11-Mar	18-Mar	WoW	vs. 4W
Lower 48 Dry Production	91.5	95.6	94.2	94.0	94.6	93.5	▼ -1.1	▼ -1.1
Canadian Imports	7.1	6.2	6.4	5.9	5.2	5.2	▲ 0.0	▼ -0.7
L48 Power	29.4	26.8	27.3	28.8	27.7	27.4	▼ -0.3	▼ -0.2
L48 Residential & Commercial	45.8	40.3	41.4	38.8	33.9	32.1	▼ -1.8	▼ -6.5
L48 Industrial	24.6	26.1	26.2	23.0	21.7	20.7	▼ -1.0	▼ -3.6
L48 Lease and Plant Fuel	5.0	5.2	5.1	5.1	5.1	5.1	▼ -0.1	▼ -0.1
L48 Pipeline Distribution	3.5	3.2	3.2	3.3	3.2	3.1	▼ -0.1	▼ -0.1
L48 Regional Gas Consumption	108.3	101.6	103.2	98.9	91.5	88.3	▼ -3.3	▼ -10.5
Net LNG Exports	12.4	13.0	11.7	12.5	12.8	12.9	▲ 0.1	▲ 0.4
Total Mexican Exports	6.1	6.1	6.1	6.4	6.6	6.5	▼ 0.0	▲ 0.2
Implied Daily Storage Activity	-28.2	-18.8	-20.5	-17.9	-11.1	-8.9	2.2	
EIA Reported Daily Storage Activity	-27.1	-18.4	-19.9	-17.7	-11.3			
Daily Model Error	-1.0	-0.4	-0.7	-0.2	0.2			

Monthly Balances

	2Yr Ago Mar-20	LY Mar-21	Nov-21	Dec-21	Jan-22	Feb-22	MTD Mar-22	MoM	vs. LY
Lower 48 Dry Production	94.2	91.3	95.7	96.2	94.3	93.5	94.2	▲ 0.7	▲ 2.9
Canadian Imports	4.1	4.8	5.3	4.8	6.7	6.6	5.1	▼ -1.5	▲ 0.4
L48 Power	28.3	24.5	29.2	28.5	30.7	28.2	27.1	▼ -1.1	▲ 2.6
L48 Residential & Commercial	27.6	28.9	28.4	33.8	49.1	43.1	31.2	▼ -11.9	▲ 2.3
L48 Industrial	22.3	19.3	23.0	22.9	26.4	25.6	20.4	▼ -5.2	▲ 1.1
L48 Lease and Plant Fuel	5.1	5.0	5.3	5.3	5.2	5.1	5.1	▲ 0.0	▲ 0.2
L48 Pipeline Distribution	2.9	2.8	2.9	3.2	3.9	3.4	3.0	▼ -0.3	▲ 0.3
L48 Regional Gas Consumption	86.2	80.4	88.8	93.7	115.2	105.3	86.8	▼ -18.4	▲ 6.4
Net LNG Exports	8.5	11.1	11.4	12.1	12.4	12.4	12.8	▲ 0.4	▲ 1.7
Total Mexican Exports	5.4	6.5	6.1	6.2	6.3	6.2	6.5	▲ 0.4	▲ 0.0
Implied Daily Storage Activity	-1.9	-2.0	-5.3	-11.0	-32.9	-23.8	-6.8		
EIA Reported Daily Storage Activity									
Daily Model Error									

Source: Bloomberg, analytix.ai

Daily Average Generation Data

Nuclear Generation Daily Average - GWh (NRC)

	13-Mar	14-Mar	15-Mar	16-Mar	17-Mar	18-Mar	19-Mar	DoD	vs. 7D
NRC Nuclear Daily Output	81.1	81.0	80.9	80.8	80.9	80.3	80.3	0.0	-0.5
NRC Nuclear Max Capacity	104.9	104.9	104.9	104.9	104.9	104.9	104.9	0.0	0.0
NRC Nuclear Outage	23.8	23.8	24.0	24.0	24.0	24.6	24.6	0.0	0.5
NRC % Nuclear Cap Utilization	82.4	82.4	82.3	82.2	82.3	81.7	81.7	0.0	-0.5

Wind Generation Daily Average - MWh (EIA)

	13-Mar	14-Mar	15-Mar	16-Mar	17-Mar	18-Mar	19-Mar	DoD	vs. 7D
CALI Wind	3389	1578	3188	3754	2133	1205	2389	1183	-152
TEXAS Wind	21867	20939	10179	17943	21634	13520	9277	-4243	-8403
US Wind	73690	70649	45783	64881	64954	56240	42533	-13707	-20167

Generation Daily Average - MWh (EIA)

	13-Mar	14-Mar	15-Mar	16-Mar	17-Mar	18-Mar	19-Mar	DoD	vs. 7D
US Wind	73690	70649	45783	64881	64954	56240	42533	-13707	-20167
US Solar	11009	17029	13667	13146	12247	14524	11832	-2692	-1772
US Petroleum	1129	1092	1044	785	690	894	566	-328	-373
US Other	7303	7137	6842	7032	7141	6544	7465	921	466
US Coal	90204	84060	86403	75626	74012	72936	78014	5079	-2526
US Nuke	84752	85050	84781	84847	84398	82584	84704	2121	303
US Hydro	30259	34993	34635	33481	36360	34444	31630	-2814	-2399
US Gas	135931	128486	136514	124604	122473	123834	125054	1221	-3586

See National Wind and Nuclear daily charts

Source: Bloomberg, analytix.ai

Storage Week Average Generation Data

Nuclear Generation Weekly Average - GWh (NRC)

	11-Feb	18-Feb	25-Feb	4-Mar	11-Mar	18-Mar	WoW	WoW Bcf/d Impact
NRC Nuclear Daily Output	87.6	88.2	86.9	85.8	82.3	80.9	-1.4	0.3
NRC Nuclear Max Capacity	104.9	104.9	104.9	104.9	104.9	104.9	0.0	
NRC Nuclear Outage	17.3	16.7	18.0	19.1	22.5	23.9	1.4	
NRC % Nuclear Cap Utilization	89.1	89.7	88.3	87.2	83.7	82.3	-1.4	

Wind Generation Weekly Average - MWh (EIA)

	11-Feb	18-Feb	25-Feb	4-Mar	11-Mar	18-Mar	WoW	WoW Bcf/d Impact
CALI Wind	999	1900	2049	815	2602	2297	-305	0.1
TEXAS Wind	9259	16874	13068	6269	14469	17742	3273	-0.6
US Wind	53792	63113	60313	36019	56872	63143	6271	-1.1
							11%	
						0.2		

Generation Weekly Average - MWh (EIA)

	11-Feb	18-Feb	25-Feb	4-Mar	11-Mar	18-Mar	WoW	WoW Bcf/d Impact
						est.		
US Wind	53792	63113	60313	36019	56872	63143	6271	-1.1
US Solar	12287	12313	11899	13919	12543	13604	1061	-0.2
US Petroleum	3554	4126	2961	3130	1754	961	-793	0.1
US Other	9373	9134	8211	7510	6577	6872	294	-0.1
US Coal	113776	101700	99888	103399	86717	85876	-842	0.2
US Nuke	92640	92758	91458	90165	86461	84783	-1678	0.3
US Hydro	32213	31952	33214	32196	34066	34639	572	-0.1
US Gas	162266	137939	147276	158688	140114	136540	-3574	0.6

See National Wind and Nuclear daily charts

Source: Bloomberg, analytix.ai

Monthly Average Generation Data

Nuclear Generation Monthly Average - GWh (NRC)

	2Yr Ago		LY		MTD			Last 30 days	MoM (MTD vs LY)	Last 30 days YoY
	Same 30 days	Same 30 days	Dec-21	Jan-22	Feb-22	Mar-22				
	NRC Nuclear Daily Output	84.7	84.4	90.3	90.2	87.6	81.9			
NRC Nuclear Max Capacity	104.9	104.9	104.9	104.9	104.9	104.9	104.9	0.0	0.0	
NRC Nuclear Outage	20.2	20.5	14.6	14.7	17.3	23.0	21.6	5.6	1.1	
NRC % Nuclear Cap Utilization	86.1	85.8	91.8	91.7	89.0	83.3	84.6	-5.7	-1.1	

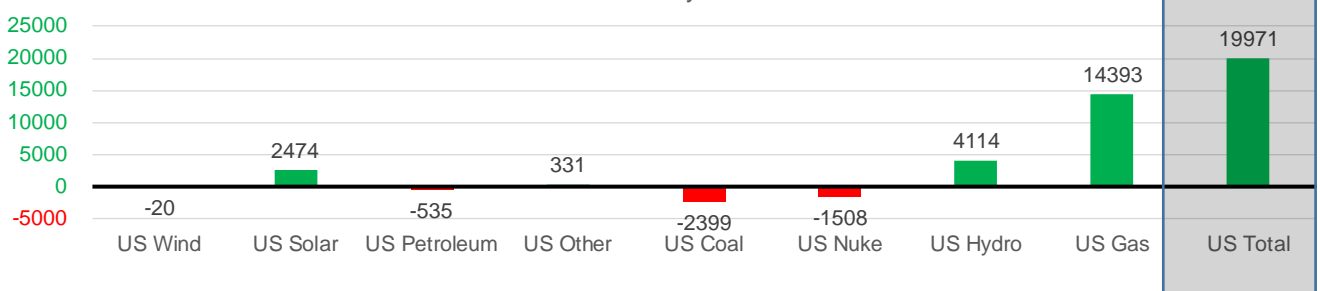
Wind Generation Monthly Average - MWh (EIA)

	2Yr Ago		LY		MTD			Last 30 days	MoM (MTD vs LY)	Last 30 days YoY
	Same 30 days	Same 30 days	Dec-21	Jan-22	Feb-22	Mar-22				
	CALI Wind	1204	2188	1482	1244	1559	2160			
TEXAS Wind	10217	13419	12927	11355	12294	13659	12872	1365	-547	
US Wind	40360	52829	54708	51045	56538	53879	52809	-2659	-20	

Generation Monthly Average - MWh (EIA)

	2Yr Ago		LY		MTD			Last 30 days	MoM (MTD vs LY)	Last 30 days YoY
	Same 30 days	Same 30 days	Dec-21	Jan-22	Feb-22	Mar-22				
	US Wind	40360	52829	54708	51045	56538	53879			
US Solar	7220	10376	7375	9476	12088	13194	12849	▼-344.7	▲2474	
US Petroleum	3246	2495	3135	5021	3449	1460	1960	▲500	▼-535	
US Other	7090	6911	8222	8792	8831	6814	7242	▲428	▲331	
US Coal	73506	93568	81462	117971	106587	85942	91168	▲5227	▼-2399	
US Nuke	85995	88919	95449	95259	92275	85906	87411	▲1506	▼-1508	
US Hydro	33287	29269	30824	34102	32212	33761	33383	▼-379	▲4114	
US Gas	156065	128239	152639	164023	152048	137053	142632	▲5867	▲14393	
US Total	405126	411042	433931	485813	464579	420047	431013	▲12804	▲19971	

Last 30 days YoY



See National Wind and Nuclear daily charts

Source: Bloomberg, analytix.ai

Regional S/D Models Storage Projection

Week Ending 18-Mar

	Daily Raw Storage	Daily Adjustment Factor	Daily Average Storage Activity (Adjusted) *	Weekly Adjusted Storage Activity
L48	-8.5	0.0	-8.5	-60
East	-5.5	2.0	-3.5	-24
Midwest	-2.1	-0.4	-2.5	-18
Mountain	3.6	-3.8	-0.2	-2
South Central	-4.1	1.8	-2.3	-16
Pacific	-0.4	0.4	0.0	0

*Adjustment Factor is calculated based on historical regional deltas

U.S. underground natural gas storage facilities by type (July 2015)

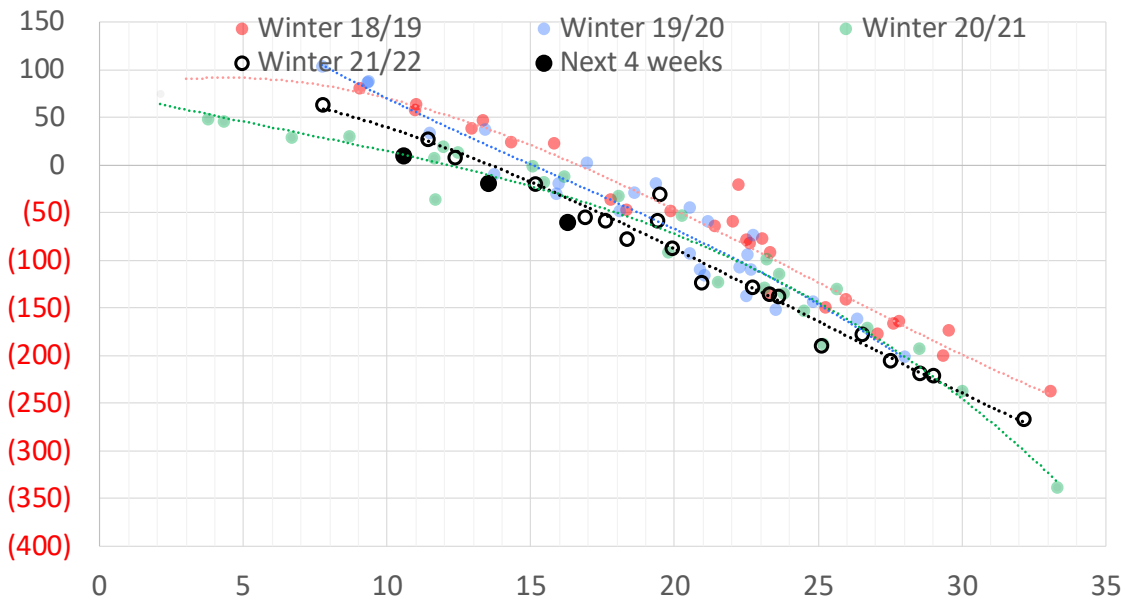


Weather Model Storage Projection

Next report
and beyond

Week Ending	GWDDs	Week Storage Projection
18-Mar	16	-60
25-Mar	11	10
01-Apr	14	-19
08-Apr	#N/A	#N/A

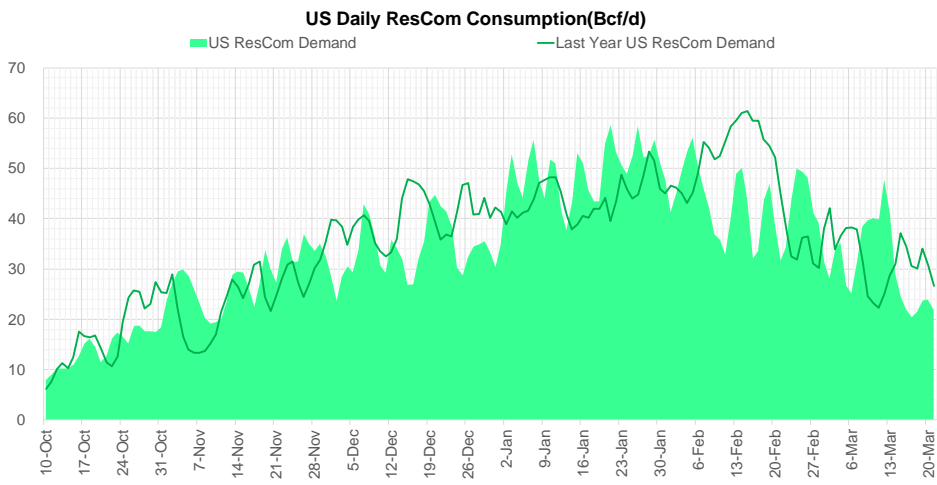
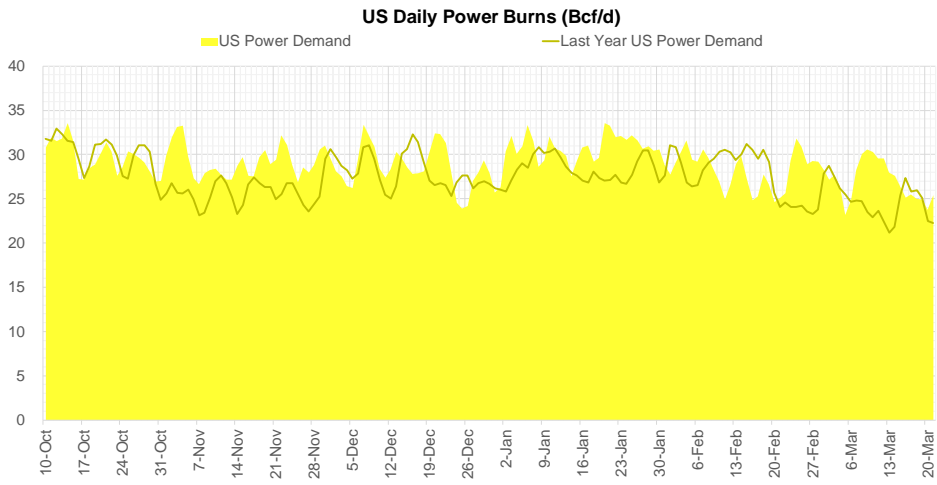
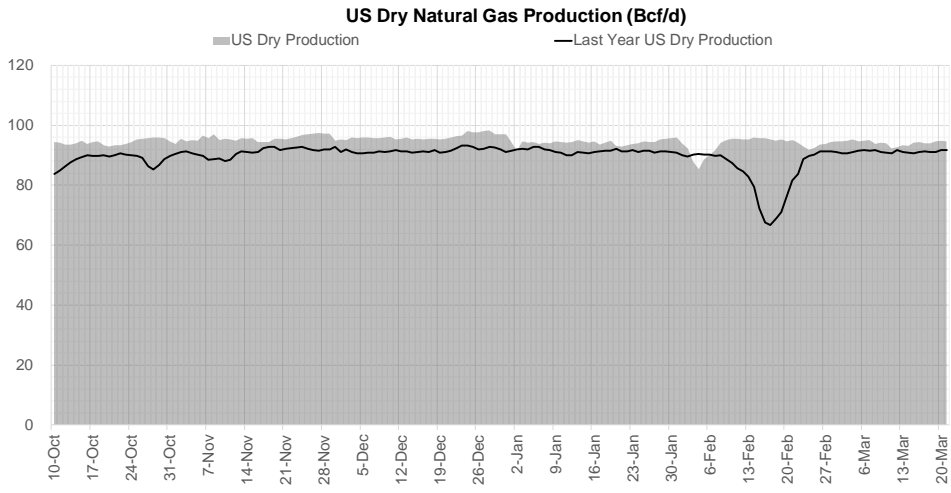
Weather Storage Model - Next 4 Week Forecast



Go to larger image



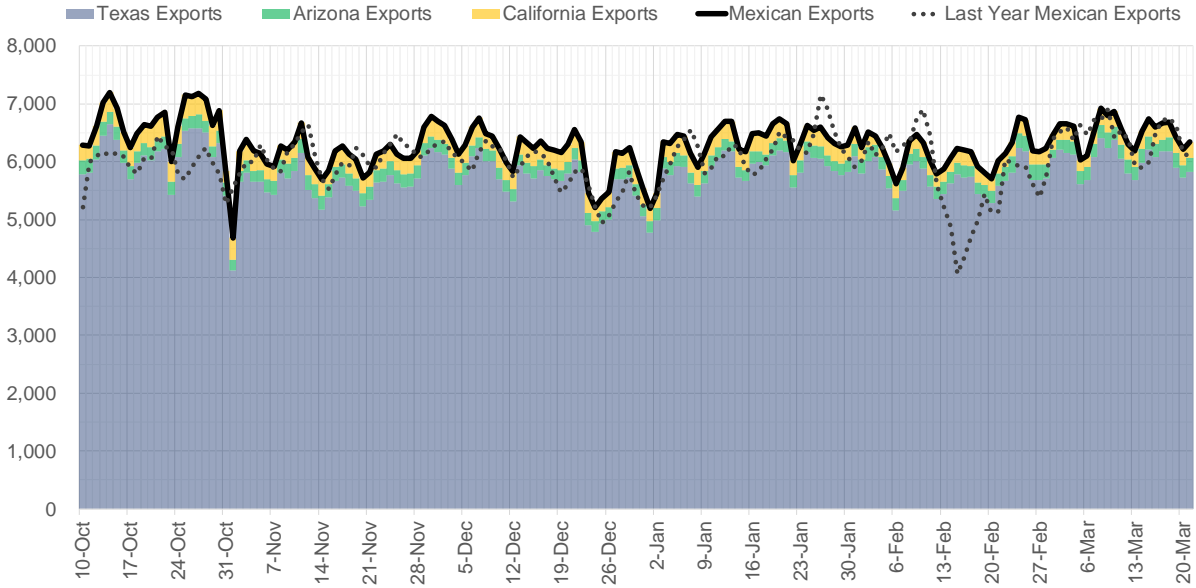
Supply – Demand Trends



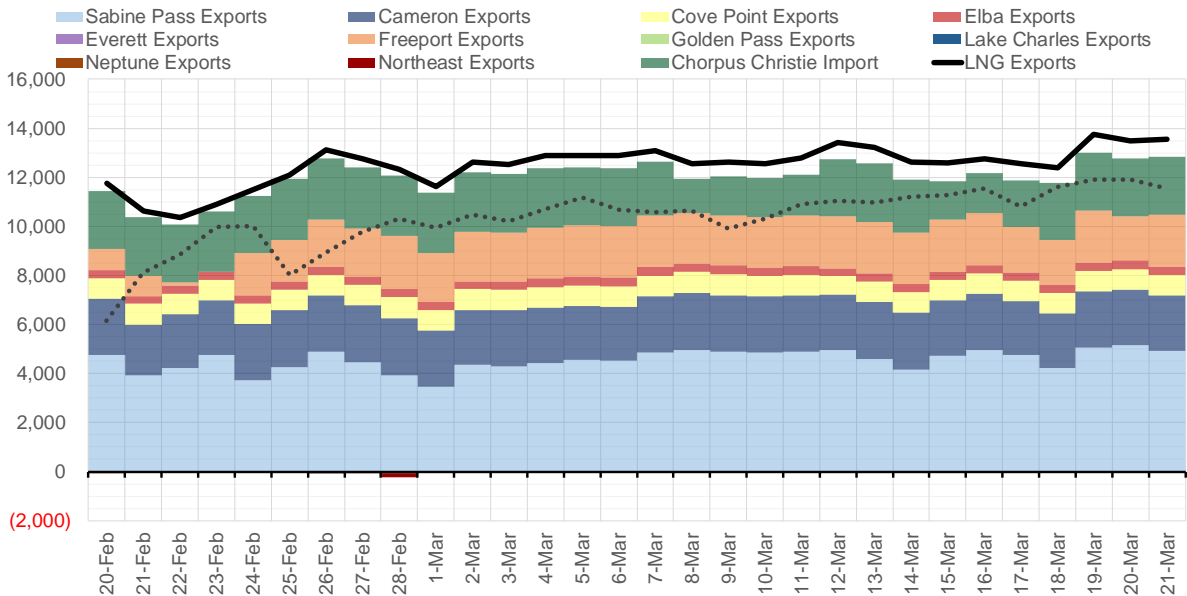
Source: Bloomberg

The risk of trading futures and options and other derivatives involves a substantial risk of loss and is not suitable for all persons. Each person must consider whether a particular trade, combination of trades, or strategy is suitable for that person's financial means and objectives. Past results are not necessarily indicative of future results. This communication may contain links to third party websites which are not under the control of and are not maintained by ION Energy Group, and ION Energy Group is not responsible for their content.

Mexican Exports (MMcf/d)



Net LNG Exports - Last 30 days (MMcf/d)



Source: Bloomberg

The risk of trading futures and options and other derivatives involves a substantial risk of loss and is not suitable for all persons. Each person must consider whether a particular trade, combination of trades, or strategy is suitable for that person's financial means and objectives. Past results are not necessarily indicative of future results. This communication may contain links to third party websites which are not under the control of and are not maintained by ION Energy Group, and ION Energy Group is not responsible for their content.

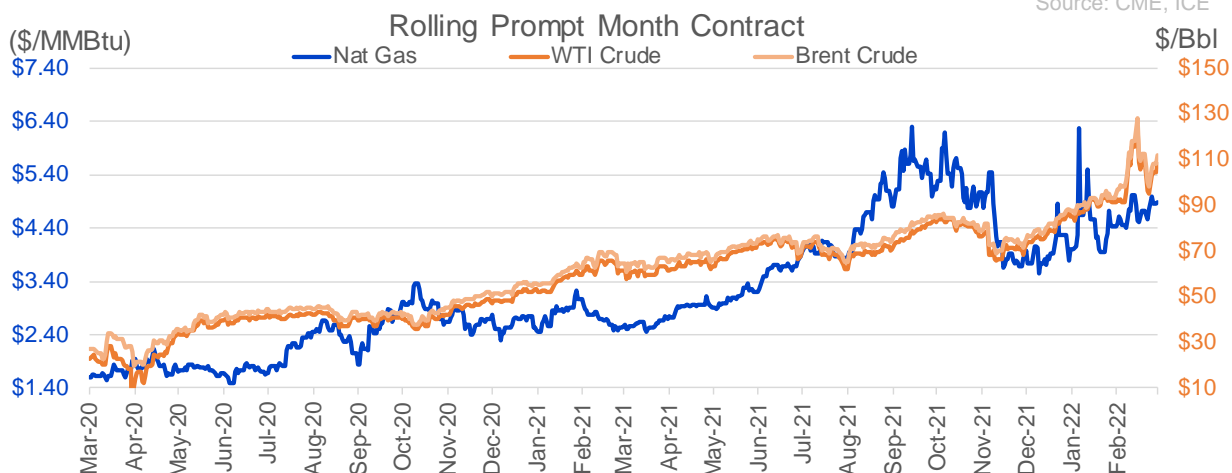
Nat Gas Options Volume and Open Interest CME and ICE Combined

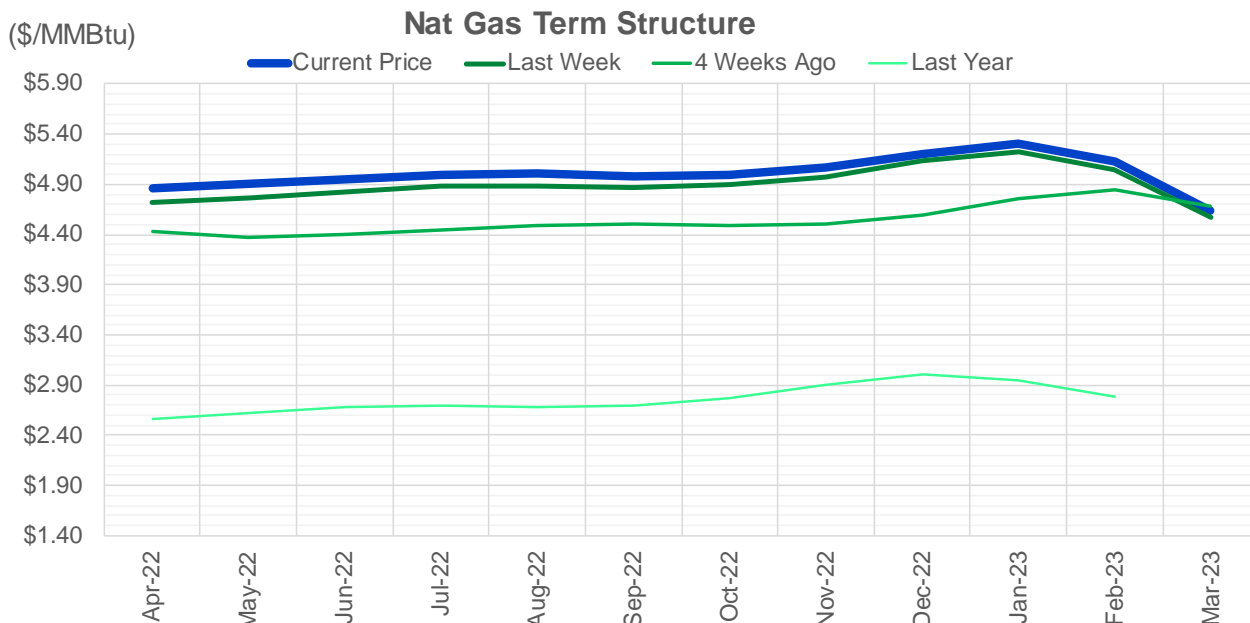
CONTRACT MONTH	CONTRACT YEAR	PUT/CALL	STRIKE	CUMULATIVE VOL	CONTRACT MONTH	CONTRACT YEAR	PUT/CALL	STRIKE	CUMULATIVE OI
4	2022	P	4.50	2193	4	2022	P	3.50	34163
6	2022	C	6.00	1419	4	2022	C	5.00	30734
4	2022	P	4.00	1405	4	2022	C	4.75	30153
12	2022	P	5.00	1300	4	2022	P	3.00	28950
12	2022	P	5.25	1300	10	2022	C	6.00	28704
4	2022	C	5.50	1227	10	2022	C	5.00	26114
4	2022	C	5.00	1186	4	2022	P	4.00	25179
6	2022	C	6.50	1175	4	2022	P	3.75	24206
6	2022	P	3.00	1160	4	2022	C	6.00	23626
8	2022	P	3.00	1155	6	2022	C	6.00	23268
7	2022	P	3.00	1150	5	2022	P	3.00	23238
9	2022	P	3.00	1150	5	2022	P	4.00	23118
10	2022	P	2.50	1150	5	2022	C	5.00	22521
10	2022	P	3.00	1150	5	2022	C	6.00	22198
5	2022	C	7.00	1120	4	2022	C	5.50	20664
4	2022	C	5.25	1116	9	2022	C	6.00	20556
5	2022	C	5.50	1115	7	2022	C	6.00	20370
5	2022	C	6.00	1105	4	2022	P	4.50	20364
5	2022	P	3.00	1050	8	2022	C	6.00	20190
5	2022	C	5.00	1040	5	2022	P	2.50	19899
5	2022	P	4.50	1013	6	2022	P	4.00	19630
8	2022	P	4.00	950	5	2022	P	3.50	19437
9	2022	P	4.00	950	10	2022	P	3.00	18826
10	2022	P	4.00	950	6	2022	C	5.00	18230
4	2022	P	4.25	931	6	2022	P	3.00	18120
10	2022	P	4.50	912	12	2022	C	5.00	17968
6	2022	P	4.50	900	5	2022	P	2.75	17685
4	2022	P	3.00	875	4	2022	C	4.50	17651
5	2022	P	4.00	868	4	2022	C	3.00	17511
1	2023	C	6.00	850	4	2022	P	2.50	17245
7	2022	P	4.00	846	4	2022	P	4.25	17119
7	2022	P	4.50	826	10	2022	C	7.00	16680
4	2022	P	4.65	824	7	2022	P	3.25	16312
12	2022	C	5.25	760	4	2022	C	8.00	15416
12	2022	C	6.00	760	8	2022	P	3.00	15140
12	2022	C	6.25	760	9	2022	P	2.50	15136
6	2022	P	4.00	750	12	2022	C	6.00	15072
10	2022	P	2.75	750	6	2022	P	3.50	15054
4	2022	P	4.15	700	5	2022	C	7.00	14990
12	2022	C	5.00	660	7	2022	P	3.00	14919
4	2022	P	4.75	618	4	2022	P	3.25	14884
6	2022	C	5.25	615	5	2022	P	3.75	14421
7	2022	P	5.00	600	10	2022	P	2.00	14421
3	2023	C	20.00	600	10	2022	P	4.00	14172
4	2023	P	3.00	600	6	2022	C	4.50	14048
7	2022	P	3.50	587	1	2023	C	5.00	14004
7	2022	C	6.00	551	9	2022	P	2.75	13933
10	2022	P	3.50	550	5	2022	C	3.00	13733
1	2023	C	10.00	550	8	2022	C	7.00	13730
					6	2022	P	3.75	13708

Source: CME, ICE

Nat Gas Futures Open Interest CME and ICE Combined

CME Henry Hub Futures (10,000 MMBtu)				ICE Henry Hub Futures Contract Equivalent (10,000 MM			
	Current	Prior	Daily Change		Current	Prior	Daily Change
APR 22	58054	64068	-6014	APR 22	71451	72832	-1381
MAY 22	214560	214813	-253	MAY 22	79647	79016	631
JUN 22	69117	68859	258	JUN 22	70531	70436	96
JUL 22	87144	88044	-900	JUL 22	66829	66452	377
AUG 22	42844	42830	14	AUG 22	60226	60146	81
SEP 22	74530	74730	-200	SEP 22	64264	63719	546
OCT 22	81385	81864	-479	OCT 22	69488	69828	-340
NOV 22	42695	42657	38	NOV 22	53953	54125	-172
DEC 22	44881	44822	59	DEC 22	63182	63171	11
JAN 23	59269	58861	408	JAN 23	63803	63671	132
FEB 23	19907	19919	-12	FEB 23	45972	46152	-180
MAR 23	38261	38444	-183	MAR 23	51164	51157	7
APR 23	45761	45774	-13	APR 23	49138	49221	-83
MAY 23	25771	25493	278	MAY 23	44116	44174	-59
JUN 23	15216	15006	210	JUN 23	40888	41000	-113
JUL 23	11895	11769	126	JUL 23	40225	40352	-127
AUG 23	10999	10884	115	AUG 23	39704	39835	-132
SEP 23	12824	12777	47	SEP 23	39661	39788	-128
OCT 23	25696	25470	226	OCT 23	44047	44137	-90
NOV 23	10402	10384	18	NOV 23	40848	40885	-37
DEC 23	14288	14308	-20	DEC 23	36292	36331	-38
JAN 24	19491	19042	449	JAN 24	32440	32354	87
FEB 24	3791	3782	9	FEB 24	22827	22760	68
MAR 24	14126	14147	-21	MAR 24	27416	27287	129
APR 24	7219	7233	-14	APR 24	20605	20511	94
MAY 24	2258	2258	0	MAY 24	19686	19678	8
JUN 24	1127	1125	2	JUN 24	19494	19453	41
JUL 24	1373	1373	0	JUL 24	19992	19978	14
AUG 24	1059	1056	3	AUG 24	20095	20036	59
SEP 24	1171	1173	-2	SEP 24	19531	19495	36





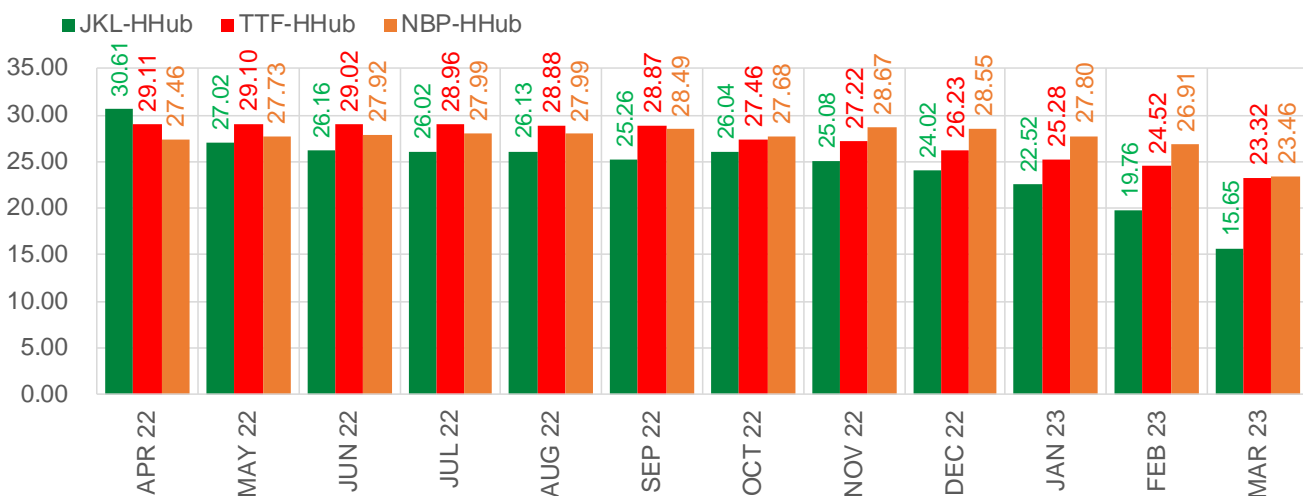
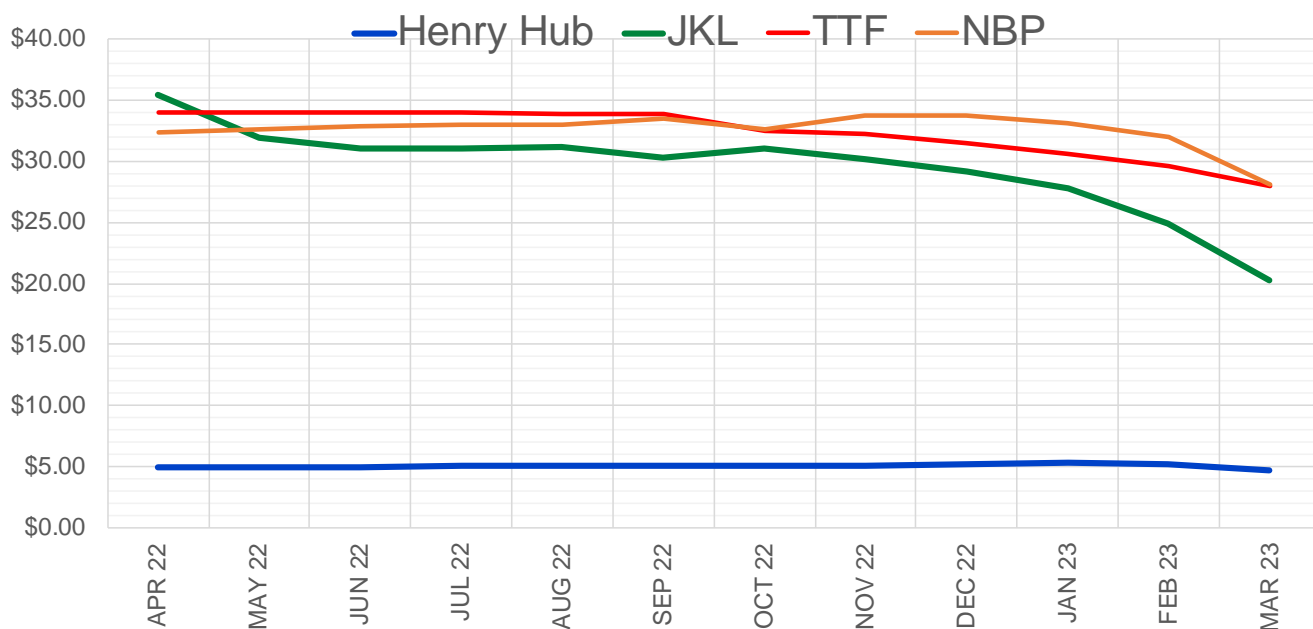
	Apr-22	May-22	Jun-22	Jul-22	Aug-22	Sep-22	Oct-22	Nov-22	Dec-22	Jan-23	Feb-23	Mar-23
Current Price	\$4.863	\$4.902	\$4.946	\$4.997	\$5.004	\$4.984	\$4.999	\$5.069	\$5.208	\$5.301	\$5.126	\$4.641
Last Week	\$4.725	\$4.766	\$4.819	\$4.878	\$4.889	\$4.874	\$4.891	\$4.975	\$5.129	\$5.225	\$5.039	\$4.570
vs. Last Week	\$0.138	\$0.136	\$0.127	\$0.119	\$0.115	\$0.110	\$0.108	\$0.094	\$0.079	\$0.076	\$0.087	\$0.071
4 Weeks Ago	\$4.431	\$4.377	\$4.398	\$4.443	\$4.496	\$4.505	\$4.488	\$4.510	\$4.600	\$4.753	\$4.851	\$4.687
vs. 4 Weeks Ago	\$0.432	\$0.525	\$0.548	\$0.554	\$0.508	\$0.479	\$0.511	\$0.559	\$0.608	\$0.548	\$0.275	-\$0.046
Last Year	\$2.535	\$2.566	\$2.624	\$2.682	\$2.696	\$2.686	\$2.702	\$2.775	\$2.907	\$3.004	\$2.951	\$2.780
vs. Last Year	\$2.328	\$2.336	\$2.322	\$2.315	\$2.308	\$2.298	\$2.297	\$2.294	\$2.301	\$2.297	\$2.175	\$1.861

	Units	Cash Settled	Prompt Settle	Cash to Prompt
AGT Citygate	\$/MMBtu	4.00	4.95	0.95
TETCO M3	\$/MMBtu	3.89	4.16	0.27
FGT Zone 3	\$/MMBtu	3.83	4.85	1.02
Zone 6 NY	\$/MMBtu	3.83	4.19	0.36
Chicago Citygate	\$/MMBtu	4.49	4.62	0.13
Michcon	\$/MMBtu	4.48	4.60	0.12
Columbia TCO Pool	\$/MMBtu	3.92	4.22	0.30
Ventura	\$/MMBtu	4.28	4.56	0.28
Rockies/Opal	\$/MMBtu	4.20	4.32	0.12
El Paso Permian Basin	\$/MMBtu	3.70	4.12	0.42
Socal Citygate	\$/MMBtu	4.36	4.37	0.00
Malin	\$/MMBtu	4.28	4.36	0.08
Houston Ship Channel	\$/MMBtu	4.43	4.58	0.16
Henry Hub Cash	\$/MMBtu	4.90	4.55	-0.35
AECO Cash	C\$/GJ	3.76	3.61	-0.15
Station2 Cash	C\$/GJ	3.64	4.23	0.59
Dawn Cash	C\$/GJ	4.59	4.64	0.05

Source: CME, Bloomberg

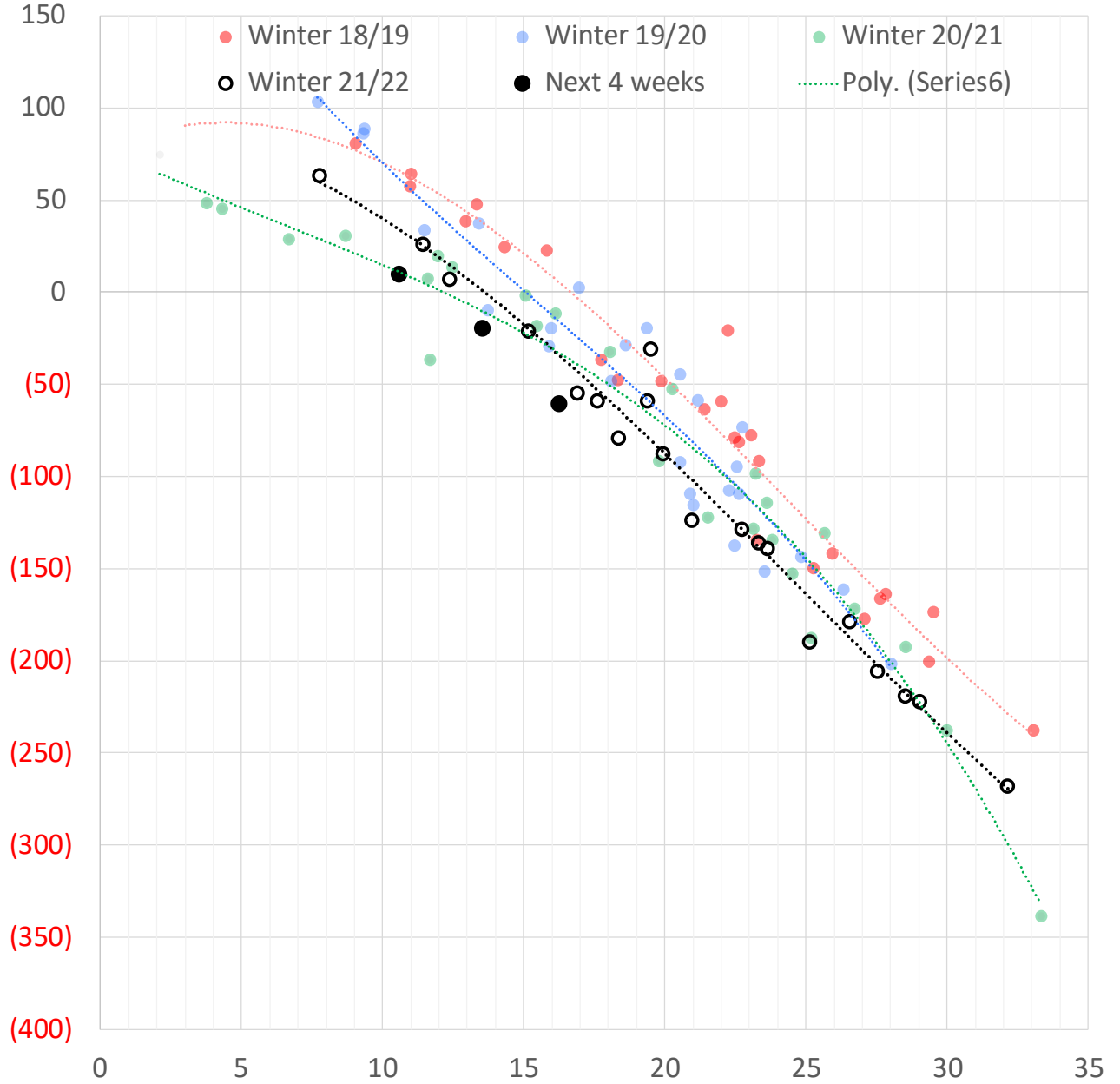
	Units	Current Price	vs. Last Week	vs. 4 Weeks Ago	vs. Last Year
NatGas Jul21/Oct21	\$/MMBtu	2.224	▲ 0.000	▲ 0.000	▲ 2.204
NatGas Oct21/Nov21	\$/MMBtu	0.361	▲ 0.000	▲ 0.000	▲ 0.288
NatGas Oct21/Jan22	\$/MMBtu	-1.817	▲ 0.000	▲ 0.000	▼ -2.119
NatGas Apr22/Oct22	\$/MMBtu	0.136	▼ -0.030	▲ 0.003	▲ 0.087
WTI Crude	\$/Bbl	104.70	▼ -4.630	▲ 13.630	▲ 43.280
Brent Crude	\$/Bbl	107.93	▼ -4.740	▲ 14.390	▲ 43.400
Fuel Oil, NY Harbour 1%	\$/Bbl	97.18	▲ 0.000	▲ 0.000	▲ 0.000
Heating Oil	cents/Gallon	359.81	▲ 18.050	▲ 81.660	▲ 177.580
Propane, Mt. Bel	cents/Gallon	1.41	▼ -0.040	▲ 0.121	▲ 0.490
Ethane, Mt. Bel	cents/Gallon	0.42	▲ 0.004	▲ 0.028	▲ 0.205
Coal, PRB	\$/MTon	12.30	▲ 0.000	▲ 0.000	▲ 0.000
Coal, PRB	\$/MMBtu	0.70			
Coal, ILB	\$/MTon	31.05	▲ 0.000	▲ 0.000	▲ 0.000
Coal, ILB	\$/MMBtu	1.32			

Nat Gas Term Structure (\$MMBTU)



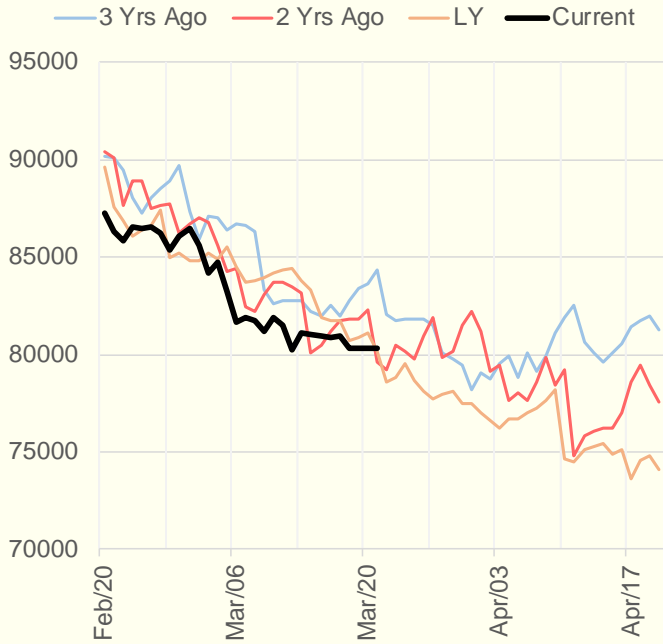
	APR 22	MAY 22	JUN 22	JUL 22	AUG 22	SEP 22	OCT 22	NOV 22	DEC 22	JAN 23	FEB 23	MAR 23
Henry Hub	\$4.886	\$4.926	\$4.963	\$5.019	\$5.048	\$5.005	\$5.022	\$5.093	\$5.230	\$5.324	\$5.147	\$4.667
JKL	\$35.495	\$31.945	\$31.120	\$31.035	\$31.180	\$30.260	\$31.065	\$30.170	\$29.245	\$27.845	\$24.910	\$20.320
JKL-HHub	\$30.609	\$27.019	\$26.157	\$26.016	\$26.132	\$25.255	\$26.043	\$25.077	\$24.015	\$22.521	\$19.763	\$15.653
TTF	\$33.998	\$34.024	\$33.984	\$33.977	\$33.932	\$33.874	\$32.477	\$32.316	\$31.461	\$30.607	\$29.662	\$27.983
TTF-HHub	\$29.112	\$29.098	\$29.021	\$28.958	\$28.884	\$28.869	\$27.455	\$27.223	\$26.231	\$25.283	\$24.515	\$23.316
NBP	\$32.343	\$32.659	\$32.879	\$33.013	\$33.034	\$33.493	\$32.704	\$33.758	\$33.781	\$33.120	\$32.059	\$28.124
NBP-HHub	\$27.457	\$27.733	\$27.916	\$27.994	\$27.986	\$28.488	\$27.682	\$28.665	\$28.551	\$27.796	\$26.912	\$23.457

Weather Storage Model - Next 4 Week Forecast

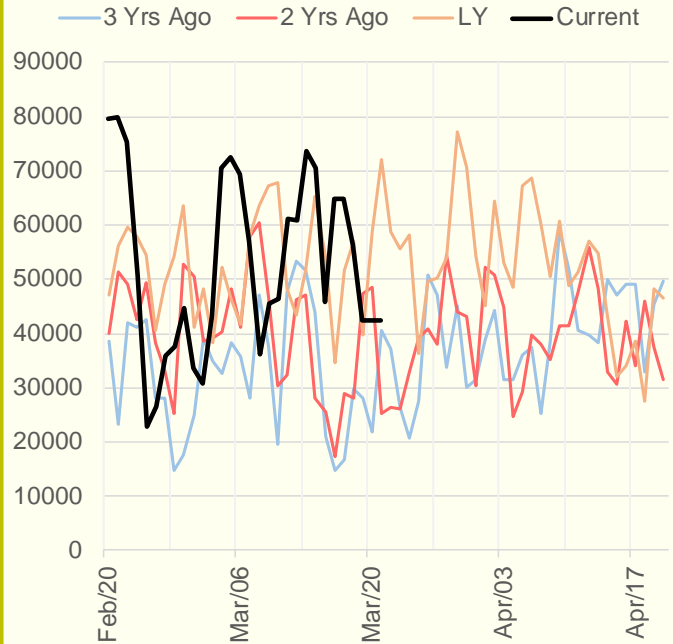


The risk of trading futures and options and other derivatives involves a substantial risk of loss and is not suitable for all persons. Each person must consider whether a particular trade, combination of trades, or strategy is suitable for that person's financial means and objectives. Past results are not necessarily indicative of future results. This communication may contain links to third party websites which are not under the control of and are not maintained by ION Energy Group, and ION Energy Group is not responsible for their content.

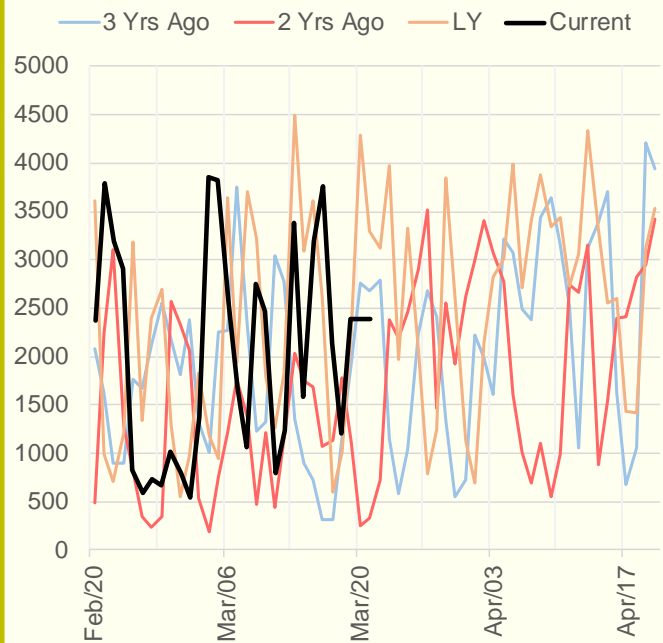
NRC Nuclear Daily Output



US Wind



CALI Wind



TEXAS Wind

