

	Current	Δ from YD	Δ from 7D Avg
Nat Gas Prompt	\$ 4.94 ▲	\$ 0.04 ▲	\$ 0.12

	Current	Δ from YD	Δ from 7D Avg
WTI Prompt	\$ 111.61 ▼	\$ (0.51) ▲	\$ 8.7

	Current	Δ from YD	Δ from 7D Avg
Brent Prompt	\$ 115.62 ▲	\$ - ▲	\$ 9.3

### Page Menu

[Short-term Weather Model Outlooks](#)

[Lower 48 Component Models](#)

[Regional S/D Models Storage Projection](#)

[Weather Model Storage Projection](#)

[Supply – Demand Trends](#)

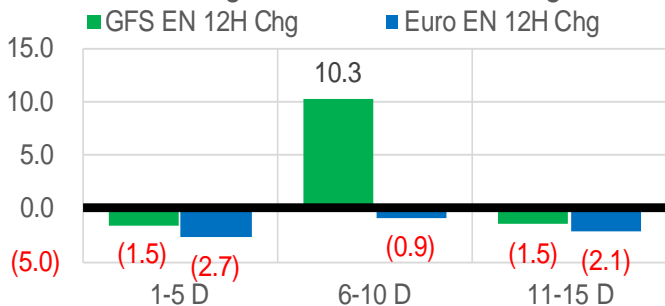
[Nat Gas Options Volume and Open Interest](#)

[Nat Gas Futures Open Interest](#)

[Price Summary](#)

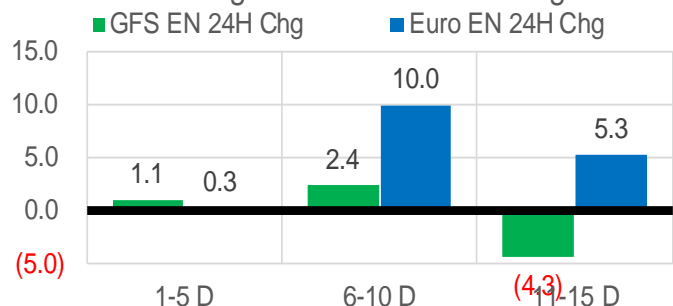
### Vs. 12H Ago

L48 Region - 00z TDD vs 12H Ago



### Vs. 24H Ago

L48 Region - 00z TDD vs 24H Ago



	Current	Δ from YD	Δ from 7D Avg
US Dry Production	95.3 ▼	-0.01 ▲	0.51

	Current	Δ from YD	Δ from 7D Avg
US Power Burns	26.1 ▲	1.21 ▲	1.06

	Current	Δ from YD	Δ from 7D Avg
US ResComm	22.9 ▲	0.95 ▲	0.33

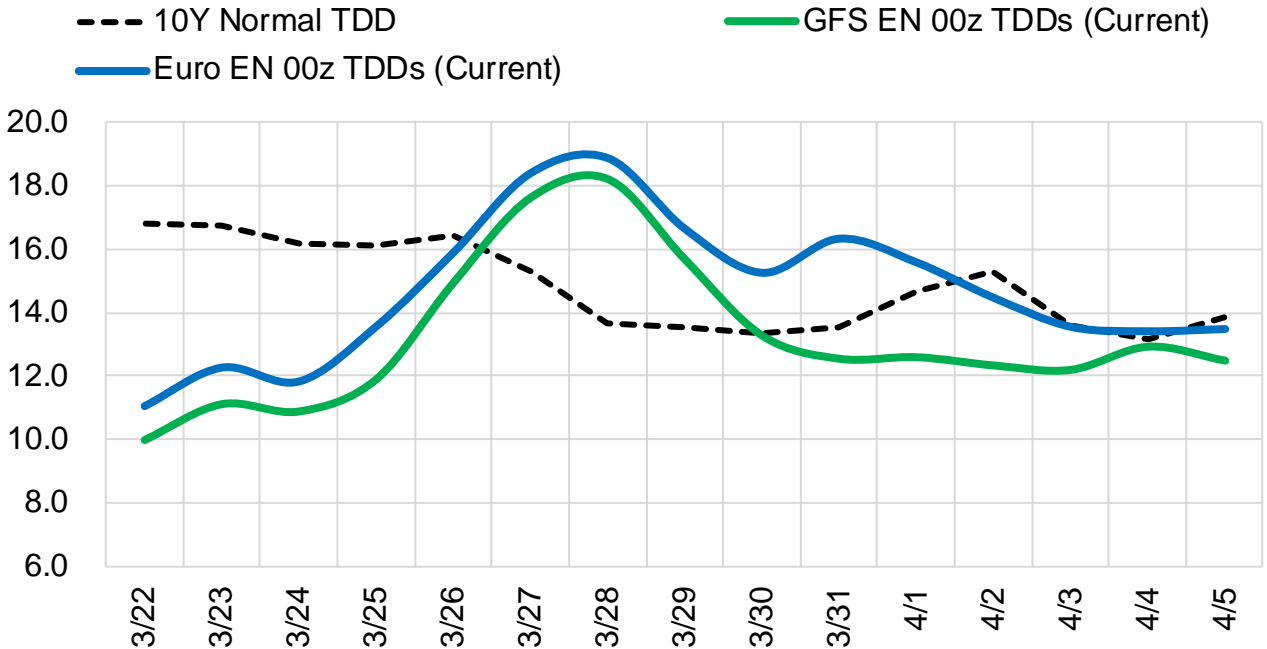
	Current	Δ from YD	Δ from 7D Avg
Canadian Imports	4.7 ▲	0.05 ▼	-0.05

	Current	Δ from YD	Δ from 7D Avg
Net LNG Exports	13.0 ▲	0.25 ▲	0.16

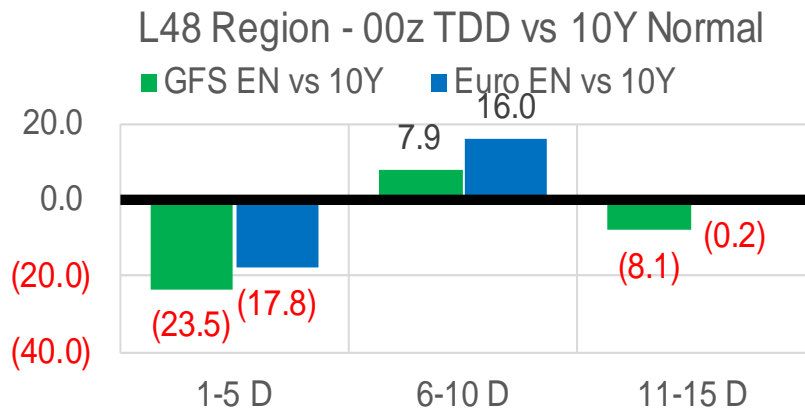
	Current	Δ from YD	Δ from 7D Avg
Mexican Exports	6.6 ▲	0.32 ▲	0.12

### Short-term Weather Model Outlooks (00z)

#### L48 Region



### Vs. 10Y Normal



Source: WSI , Bloomberg

## Lower 48 Component Models

### Daily Balances

	16-Mar	17-Mar	18-Mar	19-Mar	20-Mar	21-Mar	22-Mar	DoD	vs. 7D
<b>Lower 48 Dry Production</b>	<b>94.8</b>	<b>94.3</b>	<b>94.2</b>	<b>95.0</b>	<b>95.3</b>	<b>95.3</b>	<b>95.3</b>	▼ 0.0	▲ 0.5
<b>Canadian Imports</b>	<b>4.7</b>	<b>4.7</b>	<b>4.7</b>	<b>4.7</b>	<b>4.7</b>	<b>4.6</b>	<b>4.7</b>	▲ 0.1	▼ 0.0
L48 Power	25.1	25.5	25.0	24.9	23.6	24.9	26.1	▲ 1.2	▲ 1.3
L48 Residential & Commercial	21.9	20.5	21.5	23.7	23.9	21.9	22.9	▲ 1.0	▲ 0.6
L48 Industrial	18.8	18.7	19.0	19.4	19.2	19.0	19.5	▲ 0.5	▲ 0.5
L48 Lease and Plant Fuel	5.2	5.1	5.1	5.2	5.2	5.2	5.2	▼ 0.0	▼ 0.0
L48 Pipeline Distribution	2.5	2.4	2.4	2.5	2.5	2.4	2.6	▲ 0.1	▲ 0.1
<b>L48 Regional Gas Consumption</b>	<b>73.5</b>	<b>72.4</b>	<b>73.1</b>	<b>75.7</b>	<b>74.3</b>	<b>73.5</b>	<b>76.3</b>	▲ 2.7	▲ 2.5
<b>Net LNG Delivered</b>	<b>12.76</b>	<b>12.57</b>	<b>12.35</b>	<b>13.73</b>	<b>13.37</b>	<b>12.80</b>	<b>13.05</b>	▲ 0.2	▲ 0.1
<b>Total Mexican Exports</b>	<b>6.6</b>	<b>6.7</b>	<b>6.7</b>	<b>6.4</b>	<b>6.1</b>	<b>6.3</b>	<b>6.6</b>	▲ 0.3	▲ 0.2
Implied Daily Storage Activity	6.7	7.4	6.8	3.9	6.2	7.2	4.0		
EIA Reported Daily Storage Activity									
Daily Model Error									

### EIA Storage Week Balances

	11-Feb	18-Feb	25-Feb	4-Mar	11-Mar	18-Mar	WoW	vs. 4W
<b>Lower 48 Dry Production</b>	<b>91.5</b>	<b>95.6</b>	<b>94.2</b>	<b>94.1</b>	<b>94.8</b>	<b>93.8</b>	▼ -1.0	▼ -0.9
<b>Canadian Imports</b>	<b>7.1</b>	<b>6.2</b>	<b>6.4</b>	<b>5.9</b>	<b>5.2</b>	<b>5.2</b>	▲ 0.0	▼ -0.7
L48 Power	29.4	26.8	27.3	28.8	27.6	27.4	▼ -0.3	▼ -0.2
L48 Residential & Commercial	45.8	40.3	41.4	38.8	33.8	32.1	▼ -1.8	▼ -6.5
L48 Industrial	24.6	26.1	26.2	23.0	21.9	21.1	▼ -0.8	▼ -3.2
L48 Lease and Plant Fuel	5.0	5.2	5.1	5.1	5.2	5.1	▼ -0.1	▼ -0.1
L48 Pipeline Distribution	3.5	3.2	3.2	3.3	3.2	3.1	▼ -0.1	▼ -0.1
<b>L48 Regional Gas Consumption</b>	<b>108.3</b>	<b>101.6</b>	<b>103.2</b>	<b>99.0</b>	<b>91.8</b>	<b>88.7</b>	▼ -3.0	▼ -10.1
<b>Net LNG Exports</b>	<b>12.4</b>	<b>13.0</b>	<b>11.7</b>	<b>12.5</b>	<b>12.8</b>	<b>12.9</b>	▲ 0.1	▲ 0.4
<b>Total Mexican Exports</b>	<b>6.1</b>	<b>6.1</b>	<b>6.1</b>	<b>6.4</b>	<b>6.6</b>	<b>6.5</b>	▼ 0.0	▲ 0.2
Implied Daily Storage Activity	-28.2	-18.9	-20.5	-17.9	-11.1	-9.1	2.0	
EIA Reported Daily Storage Activity	-27.1	-18.4	-19.9	-17.7	-11.3			
Daily Model Error	-1.1	-0.4	-0.6	-0.2	0.2			

### Monthly Balances

	2Yr Ago Mar-20	LY Mar-21	Nov-21	Dec-21	Jan-22	Feb-22	MTD Mar-22	MoM	vs. LY
<b>Lower 48 Dry Production</b>	<b>94.2</b>	<b>91.3</b>	<b>95.7</b>	<b>96.2</b>	<b>94.3</b>	<b>93.5</b>	<b>94.5</b>	▲ 1.0	▲ 3.2
<b>Canadian Imports</b>	<b>4.1</b>	<b>4.8</b>	<b>5.3</b>	<b>4.8</b>	<b>6.7</b>	<b>6.6</b>	<b>5.1</b>	▼ -1.5	▲ 0.4
L48 Power	28.3	24.5	29.2	28.5	30.7	28.2	27.0	▼ -1.2	▲ 2.5
L48 Residential & Commercial	27.6	28.9	28.4	33.8	49.1	43.1	30.7	▼ -12.3	▲ 1.8
L48 Industrial	22.3	19.3	23.0	22.9	26.4	25.6	20.6	▼ -4.9	▲ 1.4
L48 Lease and Plant Fuel	5.1	5.0	5.3	5.3	5.2	5.1	5.1	▲ 0.0	▲ 0.2
L48 Pipeline Distribution	2.9	2.8	2.9	3.2	3.9	3.4	3.0	▼ -0.4	▲ 0.2
<b>L48 Regional Gas Consumption</b>	<b>86.2</b>	<b>80.4</b>	<b>88.8</b>	<b>93.7</b>	<b>115.2</b>	<b>105.3</b>	<b>86.5</b>	▼ -18.8	▲ 6.1
<b>Net LNG Exports</b>	<b>8.5</b>	<b>11.1</b>	<b>11.4</b>	<b>12.1</b>	<b>12.4</b>	<b>12.4</b>	<b>12.8</b>	▲ 0.4	▲ 1.6
<b>Total Mexican Exports</b>	<b>5.4</b>	<b>6.5</b>	<b>6.1</b>	<b>6.2</b>	<b>6.3</b>	<b>6.2</b>	<b>6.5</b>	▲ 0.4	▲ 0.0
Implied Daily Storage Activity	-1.9	-2.0	-5.3	-11.0	-32.9	-23.8	-6.2		
EIA Reported Daily Storage Activity									
Daily Model Error									

Source: Bloomberg, analytix.ai

## Daily Average Generation Data

### Nuclear Generation Daily Average - GWh (NRC)

	14-Mar	15-Mar	16-Mar	17-Mar	18-Mar	19-Mar	20-Mar	DoD	vs. 7D
NRC Nuclear Daily Output	81.0	80.9	80.8	80.9	80.3	81.2	80.7	-0.4	-0.1
NRC Nuclear Max Capacity	104.9	104.9	104.9	104.9	104.9	104.9	104.9	0.0	0.0
NRC Nuclear Outage	23.8	24.0	24.0	24.0	24.6	23.7	24.1	0.4	0.1
NRC % Nuclear Cap Utilization	82.4	82.3	82.2	82.3	81.7	82.6	82.1	-0.5	-0.1

### Wind Generation Daily Average - MWh (EIA)

	14-Mar	15-Mar	16-Mar	17-Mar	18-Mar	19-Mar	20-Mar	DoD	vs. 7D
CALI Wind	1578	3188	3754	2133	1205	2389	4439	2050	2064
TEXAS Wind	20939	10179	17943	21634	13520	9277	21826	12549	6244
US Wind	70641	45819	64917	64962	56243	42533	71112	28579	13593

### Generation Daily Average - MWh (EIA)

	14-Mar	15-Mar	16-Mar	17-Mar	18-Mar	19-Mar	20-Mar	DoD	vs. 7D
US Wind	70641	45819	64917	64962	56243	42533	71112	28579	13593
US Solar	17029	13641	13151	12247	14524	11832	11992	161	-1745
US Petroleum	1092	1044	785	690	894	566	689	123	-156
US Other	7147	6842	7032	7141	6544	7465	8432	967	1404
US Coal	84064	86422	75566	74030	72938	78014	65756	-12258	-12750
US Nuke	85050	84781	84847	84398	82584	84704	84317	-387	-77
US Hydro	34993	34643	33486	36367	34445	31630	29901	-1729	-4360
<b>US Gas</b>	<b>128432</b>	<b>136514</b>	<b>124550</b>	<b>122473</b>	<b>123834</b>	<b>125054</b>	<b>104180</b>	<b>-20874</b>	<b>-22630</b>

See National Wind and Nuclear daily charts

Source: Bloomberg, analytix.ai

## Storage Week Average Generation Data

### Nuclear Generation Weekly Average - GWh (NRC)

	11-Feb	18-Feb	25-Feb	4-Mar	11-Mar	18-Mar	WoW	WoW Bcf/d Impact
NRC Nuclear Daily Output	87.6	88.2	86.9	85.8	82.3	80.9	-1.4	0.3
NRC Nuclear Max Capacity	104.9	104.9	104.9	104.9	104.9	104.9	0.0	
NRC Nuclear Outage	17.3	16.7	18.0	19.1	22.5	23.9	1.4	
NRC % Nuclear Cap Utilization	89.1	89.7	88.3	87.2	83.7	82.3	-1.4	

### Wind Generation Weekly Average - MWh (EIA)

	11-Feb	18-Feb	25-Feb	4-Mar	11-Mar	18-Mar	WoW	WoW Bcf/d Impact
CALI Wind	999	1900	2049	815	2602	2297	-305	0.1
TEXAS Wind	9259	16874	13068	6269	14469	17742	3273	-0.6
US Wind	53792	63113	60313	36019	56873	63169	6297	-1.1
							11%	
						0.2		

### Generation Weekly Average - MWh (EIA)

	11-Feb	18-Feb	25-Feb	4-Mar	11-Mar	18-Mar	WoW	WoW Bcf/d Impact
						est.		
US Wind	53792	63113	60313	36019	56873	63169	6297	-1.1
US Solar	12287	12313	11899	13919	12582	13814	1232	-0.2
US Petroleum	3554	4126	2961	3130	1754	961	-793	0.1
US Other	9373	9134	8211	7510	6617	6970	354	-0.1
US Coal	113776	101700	99888	103399	86717	85899	-818	0.1
US Nuke	92640	92758	91458	90165	86461	84784	-1677	0.3
US Hydro	32213	31952	33214	32196	34068	34644	576	-0.1
<b>US Gas</b>	<b>162266</b>	<b>137939</b>	<b>147276</b>	<b>158688</b>	<b>140175</b>	<b>136698</b>	<b>-3477</b>	<b>0.6</b>

See National Wind and Nuclear daily charts

Source: Bloomberg, analytix.ai

## Monthly Average Generation Data

### Nuclear Generation Monthly Average - GWh (NRC)

	2Yr Ago		LY		MTD		Last 30 days	MoM (MTD vs LY)	Last 30 days YoY
	Same 30 days	Same 30 days	Dec-21	Jan-22	Feb-22	Mar-22			
	NRC Nuclear Daily Output	84.3	84.0	90.3	90.2	87.6			
NRC Nuclear Max Capacity	104.9	104.9	104.9	104.9	104.9	104.9	104.9	0.0	0.0
NRC Nuclear Outage	20.5	20.9	14.6	14.7	17.3	22.9	21.8	5.6	0.9
NRC % Nuclear Cap Utilization	85.8	85.4	91.8	91.7	89.0	83.3	84.5	-5.7	-0.9

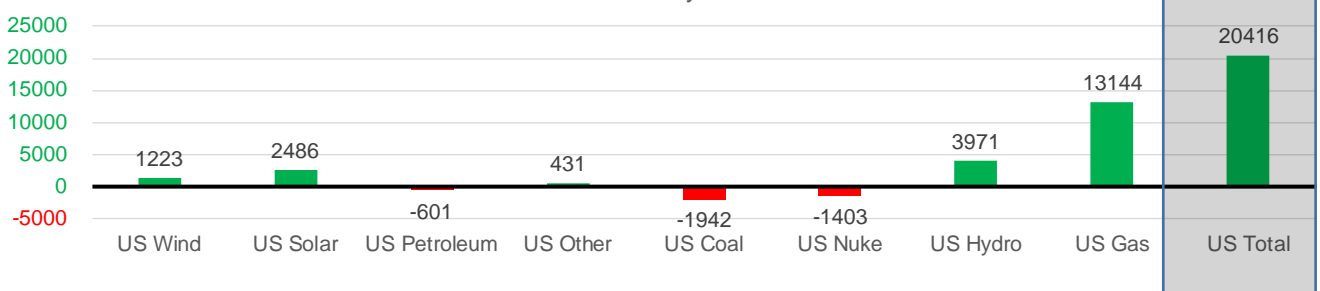
### Wind Generation Monthly Average - MWh (EIA)

	2Yr Ago		LY		MTD		Last 30 days	MoM (MTD vs LY)	Last 30 days YoY
	Same 30 days	Same 30 days	Dec-21	Jan-22	Feb-22	Mar-22			
	CALI Wind	1212	2171	1482	1244	1559			
TEXAS Wind	10152	13695	12927	11355	12294	15171	13788	2877	93
US Wind	39900	53217	54708	51045	56538	57269	54439	732	1223

### Generation Monthly Average - MWh (EIA)

	2Yr Ago		LY		MTD		Last 30 days	MoM (MTD vs LY)	Last 30 days YoY
	Same 30 days	Same 30 days	Dec-21	Jan-22	Feb-22	Mar-22			
	US Wind	39900	53217	54708	51045	56538			
US Solar	7261	10417	7375	9476	12088	13233	12903	▼-330.1	▲ 2486
US Petroleum	3255	2521	3135	5021	3449	1436	1920	▲ 483	▼-601
US Other	7071	6922	8222	8792	8831	7019	7353	▲ 334	▲ 431
US Coal	72673	91617	81462	117971	106587	83917	89675	▲ 5758	▼-1942
US Nuke	85750	88529	95449	95259	92275	85799	87126	▲ 1328	▼-1403
US Hydro	32982	29222	30824	34040	32212	33431	33193	▼-238	▲ 3971
<b>US Gas</b>	<b>154824</b>	<b>127621</b>	<b>152639</b>	<b>164024</b>	<b>152048</b>	<b>133730</b>	<b>140765</b>	<b>▲ 4504</b>	<b>▲ 13144</b>
<b>US Total</b>	<b>402082</b>	<b>408519</b>	<b>433931</b>	<b>485812</b>	<b>464579</b>	<b>417818</b>	<b>428935</b>	<b>▲ 11838</b>	<b>▲ 20416</b>

Last 30 days YoY



See National Wind and Nuclear daily charts

Source: Bloomberg, analytix.ai

### Regional S/D Models Storage Projection

Week Ending 18-Mar

	Daily Raw Storage	Daily Adjustment Factor	Daily Average Storage Activity (Adjusted) *	Weekly Adjusted Storage Activity
L48	-8.7	0.0	-8.7	-61
East	-5.5	2.0	-3.5	-25
Midwest	-2.2	-0.4	-2.6	-18
Mountain	3.6	-3.8	-0.2	-2
South Central	-4.1	1.8	-2.3	-16
Pacific	-0.5	0.5	0.0	0

\*Adjustment Factor is calculated based on historical regional deltas

U.S. underground natural gas storage facilities by type (July 2015)

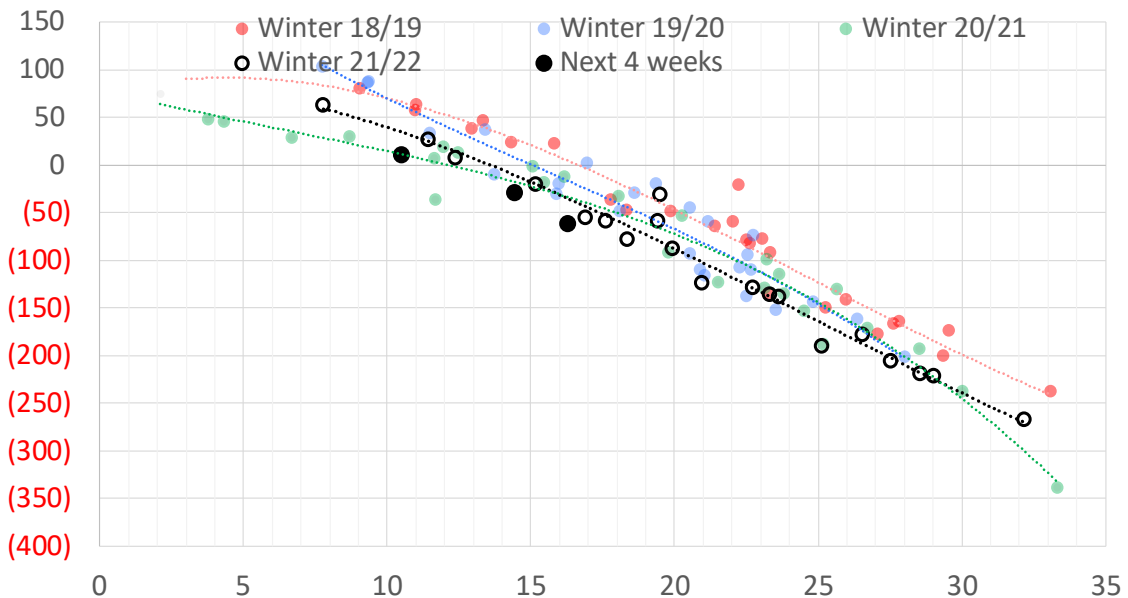


### Weather Model Storage Projection

Next report  
and beyond

Week Ending	GWDDs	Week Storage Projection
18-Mar	16	-61
25-Mar	10	11
01-Apr	14	-29
08-Apr	#N/A	#N/A

Weather Storage Model - Next 4 Week Forecast

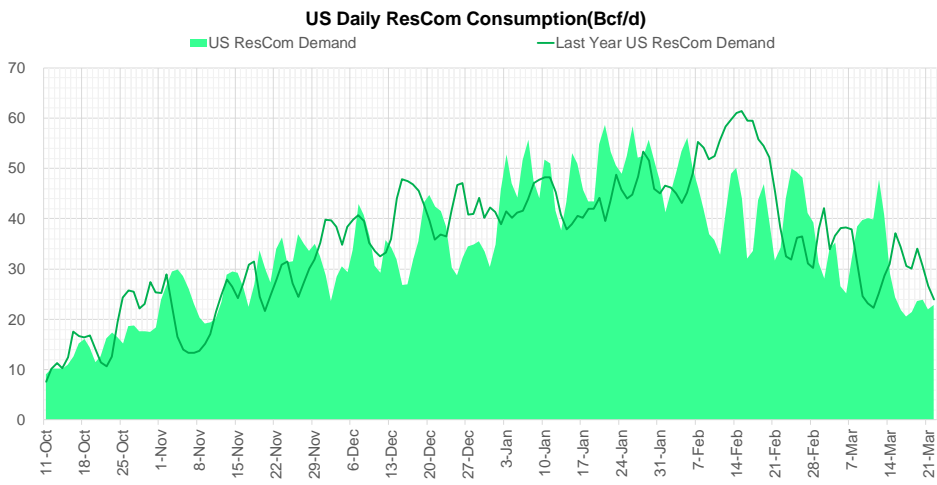
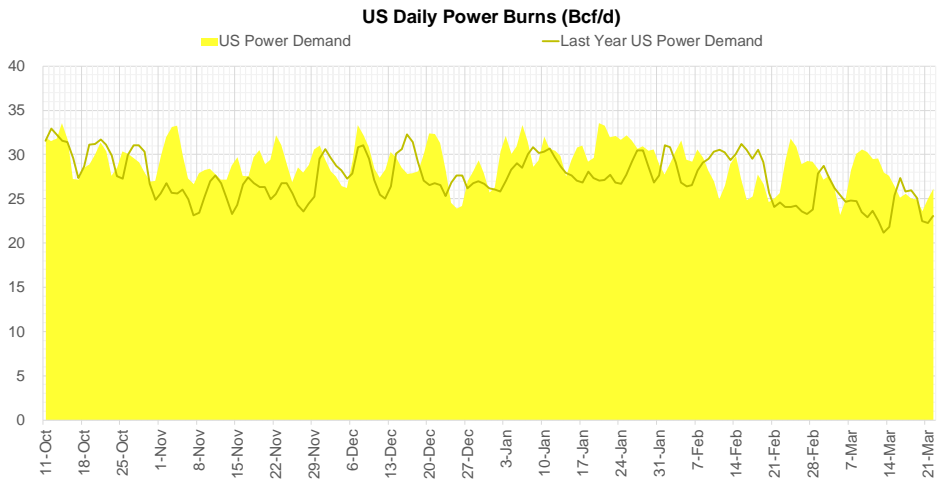
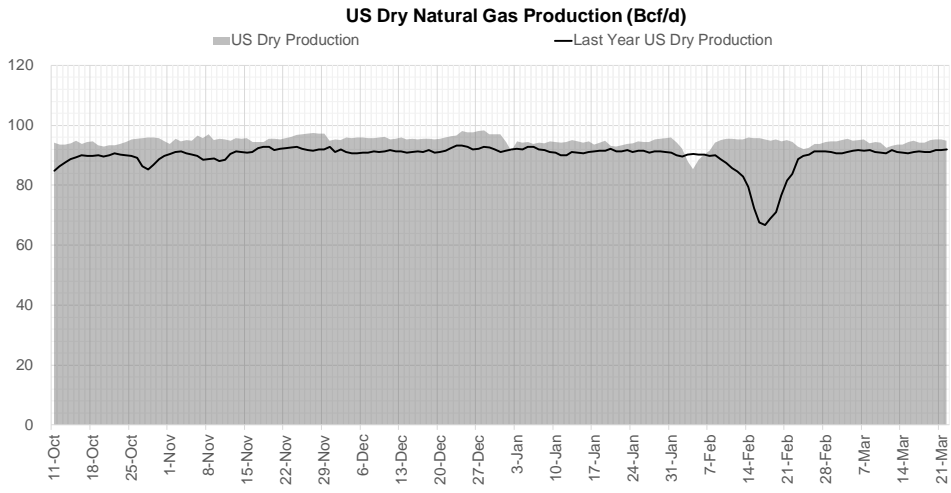


[Go to larger image](#)





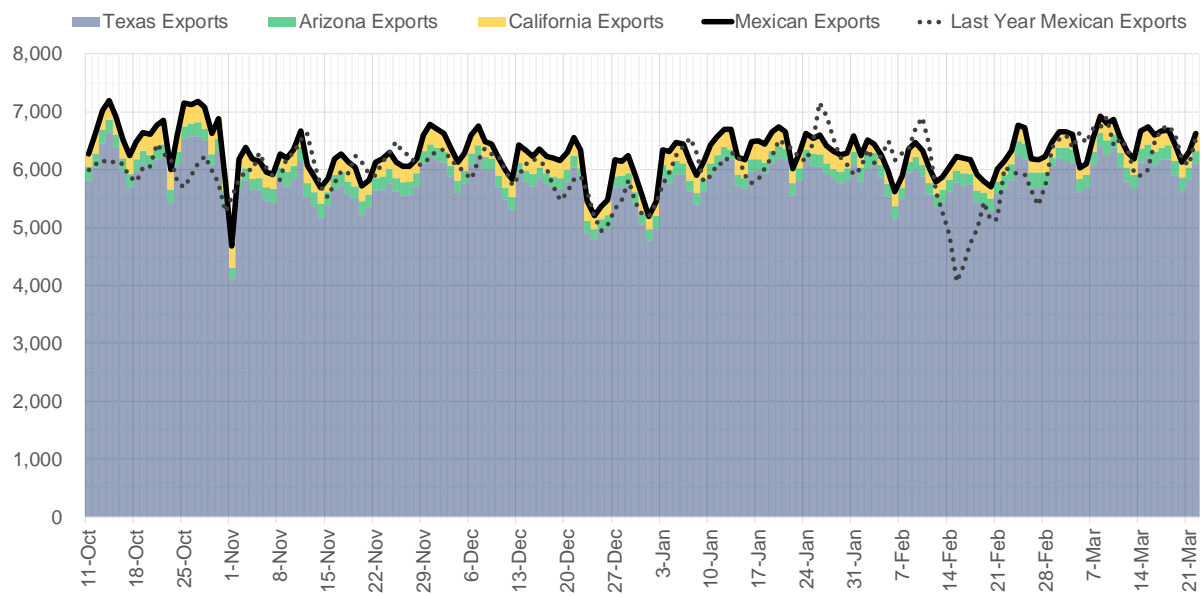
## Supply – Demand Trends



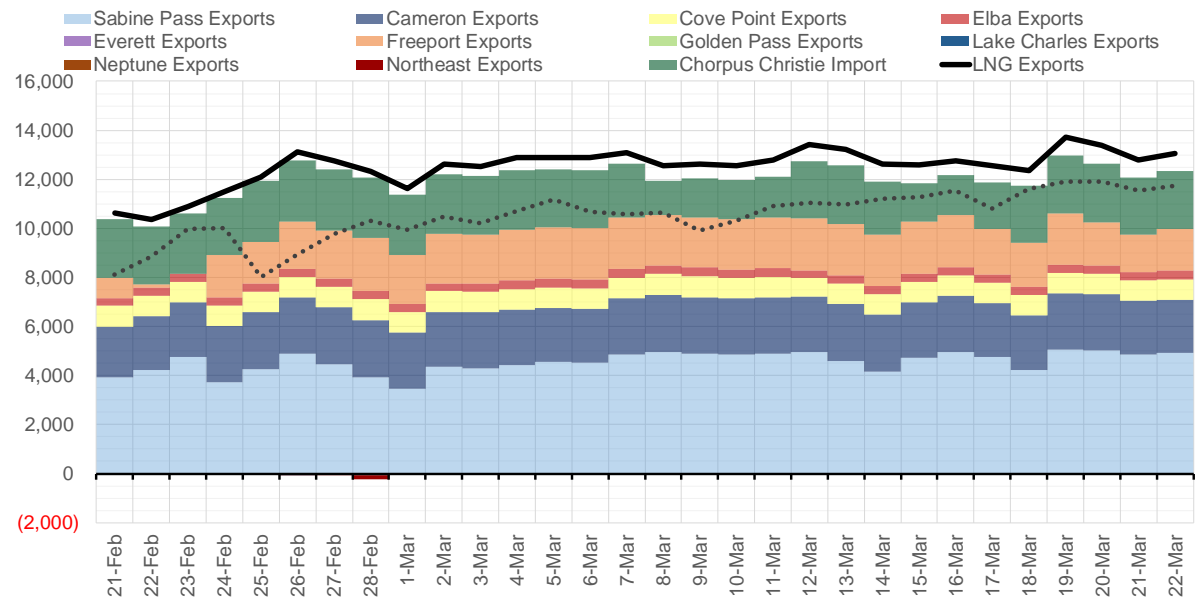
Source: Bloomberg

The risk of trading futures and options and other derivatives involves a substantial risk of loss and is not suitable for all persons. Each person must consider whether a particular trade, combination of trades, or strategy is suitable for that person's financial means and objectives. Past results are not necessarily indicative of future results. This communication may contain links to third party websites which are not under the control of and are not maintained by ION Energy Group, and ION Energy Group is not responsible for their content.

### Mexican Exports (MMcf/d)



### Net LNG Exports - Last 30 days (MMcf/d)



Source: Bloomberg

The risk of trading futures and options and other derivatives involves a substantial risk of loss and is not suitable for all persons. Each person must consider whether a particular trade, combination of trades, or strategy is suitable for that person's financial means and objectives. Past results are not necessarily indicative of future results. This communication may contain links to third party websites which are not under the control of and are not maintained by ION Energy Group, and ION Energy Group is not responsible for their content.

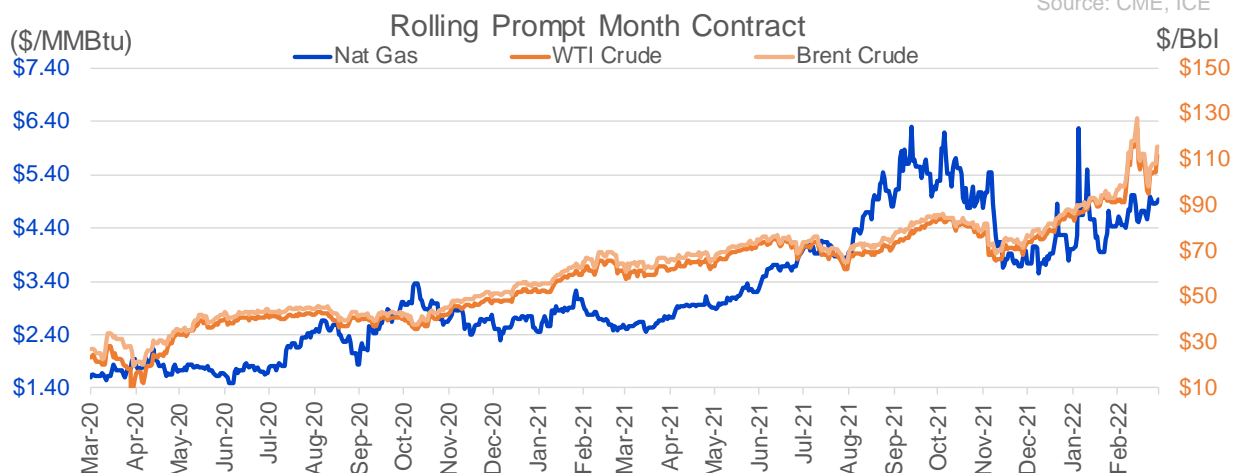
### Nat Gas Options Volume and Open Interest CME and ICE Combined

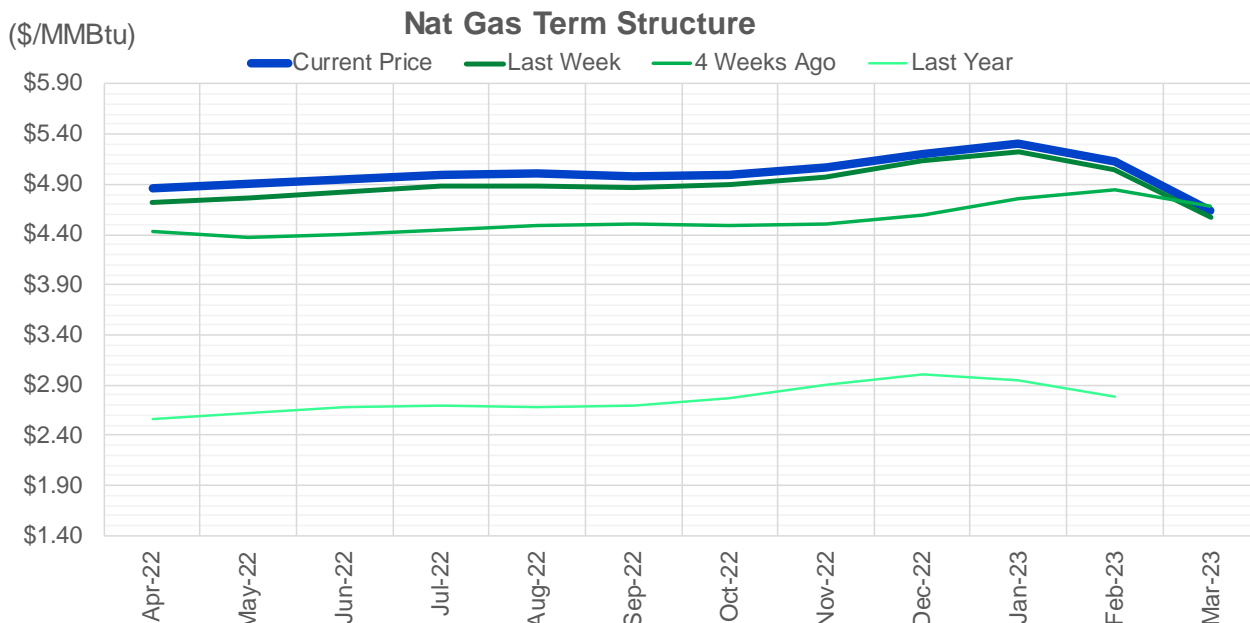
CONTRACT MONTH	CONTRACT YEAR	PUT/CALL	STRIKE	CUMULATIVE VOL	CONTRACT MONTH	CONTRACT YEAR	PUT/CALL	STRIKE	CUMULATIVE OI
4	2022	P	4.50	3868	4	2022	P	3.50	34163
4	2022	C	5.00	3578	4	2022	C	5.00	30918
6	2022	C	6.00	2993	4	2022	C	4.75	30152
4	2022	C	5.25	2525	10	2022	C	6.00	28865
4	2022	C	5.50	2323	4	2022	P	3.00	28300
5	2022	C	6.00	1703	10	2022	C	5.00	26189
4	2022	P	5.00	1528	4	2022	P	4.00	24600
4	2022	C	6.00	1491	4	2022	P	3.75	24206
4	2022	P	4.75	1413	5	2022	P	4.00	23151
10	2022	P	3.00	1394	5	2022	P	3.00	23088
5	2022	C	5.50	1349	4	2022	C	6.00	23014
4	2022	C	5.75	1157	5	2022	C	5.00	22432
5	2022	C	5.00	1143	6	2022	C	6.00	22217
5	2022	C	7.00	1104	5	2022	C	6.00	22034
4	2022	C	5.10	1073	7	2022	C	6.00	20534
6	2022	P	4.00	1036	9	2022	C	6.00	20482
4	2022	C	4.85	1034	4	2022	C	5.50	20463
2	2023	C	7.00	1025	4	2022	P	4.50	20358
3	2023	C	7.00	1025	8	2022	C	6.00	20165
6	2022	C	6.50	999	5	2022	P	2.50	19899
4	2022	C	4.90	979	6	2022	P	4.00	19586
4	2022	P	4.25	951	5	2022	P	3.50	19574
6	2022	C	5.00	905	10	2022	P	3.00	18476
5	2022	C	5.25	862	6	2022	C	5.00	18272
7	2022	C	6.00	816	6	2022	P	3.00	17955
1	2023	C	7.00	675	12	2022	C	5.00	17768
6	2022	C	7.00	655	5	2022	P	2.75	17685
5	2022	P	4.25	630	4	2022	C	4.50	17630
11	2022	C	7.00	575	4	2022	C	3.00	17511
12	2022	C	7.00	575	4	2022	P	2.50	17245
6	2022	P	4.50	574	4	2022	P	4.25	17096
5	2022	P	4.00	570	10	2022	C	7.00	16680
10	2022	P	4.00	567	7	2022	P	3.25	16312
7	2022	C	7.00	564	5	2022	C	7.00	15449
6	2022	C	6.25	550	4	2022	C	8.00	15416
11	2022	P	5.00	525	6	2022	P	3.50	15185
12	2022	P	5.00	525	9	2022	P	2.50	15136
1	2023	P	5.00	525	12	2022	C	6.00	15072
2	2023	P	5.00	525	8	2022	P	3.00	14969
3	2023	P	5.00	525	4	2022	P	3.25	14884
4	2023	P	5.00	525	7	2022	P	3.00	14744
4	2023	C	5.00	525	10	2022	P	4.00	14697
4	2023	P	2.75	525	5	2022	P	3.75	14470
5	2023	C	5.00	525	10	2022	P	2.00	14421
5	2023	P	2.75	525	6	2022	C	4.50	14048
6	2023	C	5.00	525	1	2023	C	5.00	14004
6	2023	P	2.75	525	9	2022	P	2.75	13933
7	2023	C	5.00	525	5	2022	C	3.00	13733
7	2023	P	2.75	525	6	2022	C	7.00	13686
8	2023	C	5.00	525	8	2022	C	7	13680

Source: CME, ICE

### Nat Gas Futures Open Interest CME and ICE Combined

CME Henry Hub Futures (10,000 MMBtu)				ICE Henry Hub Futures Contract Equivalent (10,000 MM			
	Current	Prior	Daily Change		Current	Prior	Daily Change
APR 22	48292	58129	-9837	APR 22	71409	71451	-41
MAY 22	216423	214430	1993	MAY 22	81756	79647	2109
JUN 22	69369	69117	252	JUN 22	70520	70531	-12
JUL 22	89259	87095	2164	JUL 22	67123	66829	295
AUG 22	43141	42839	302	AUG 22	60154	60226	-73
SEP 22	75287	74530	757	SEP 22	64375	64264	111
OCT 22	80642	81385	-743	OCT 22	68519	69488	-969
NOV 22	42727	42695	32	NOV 22	53930	53953	-23
DEC 22	45363	44881	482	DEC 22	63121	63182	-61
JAN 23	60154	59270	884	JAN 23	64149	63803	346
FEB 23	19979	19907	72	FEB 23	45960	45972	-12
MAR 23	37991	38260	-269	MAR 23	50970	51164	-194
APR 23	45629	45761	-132	APR 23	49107	49138	-32
MAY 23	26595	25771	824	MAY 23	44034	44116	-81
JUN 23	15534	15216	318	JUN 23	40921	40888	33
JUL 23	11973	11895	78	JUL 23	40264	40225	39
AUG 23	11031	10999	32	AUG 23	39742	39704	39
SEP 23	12967	12824	143	SEP 23	39698	39661	38
OCT 23	25598	25696	-98	OCT 23	44083	44047	36
NOV 23	10678	10402	276	NOV 23	40781	40848	-67
DEC 23	14283	14288	-5	DEC 23	36224	36292	-69
JAN 24	19259	19491	-232	JAN 24	32446	32440	6
FEB 24	3792	3791	1	FEB 24	22818	22827	-9
MAR 24	14121	14126	-5	MAR 24	27447	27416	31
APR 24	7183	7219	-36	APR 24	20624	20605	20
MAY 24	2258	2258	0	MAY 24	19640	19686	-47
JUN 24	1177	1127	50	JUN 24	19469	19494	-25
JUL 24	1373	1373	0	JUL 24	19970	19992	-23
AUG 24	1059	1059	0	AUG 24	20102	20095	8
SEP 24	1171	1171	0	SEP 24	19491	19531	-40





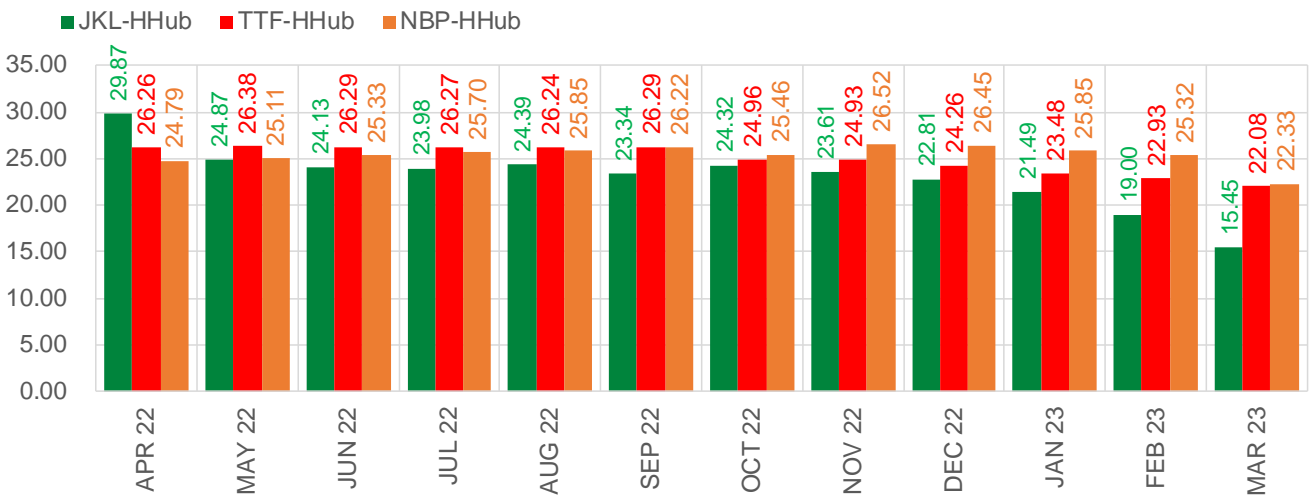
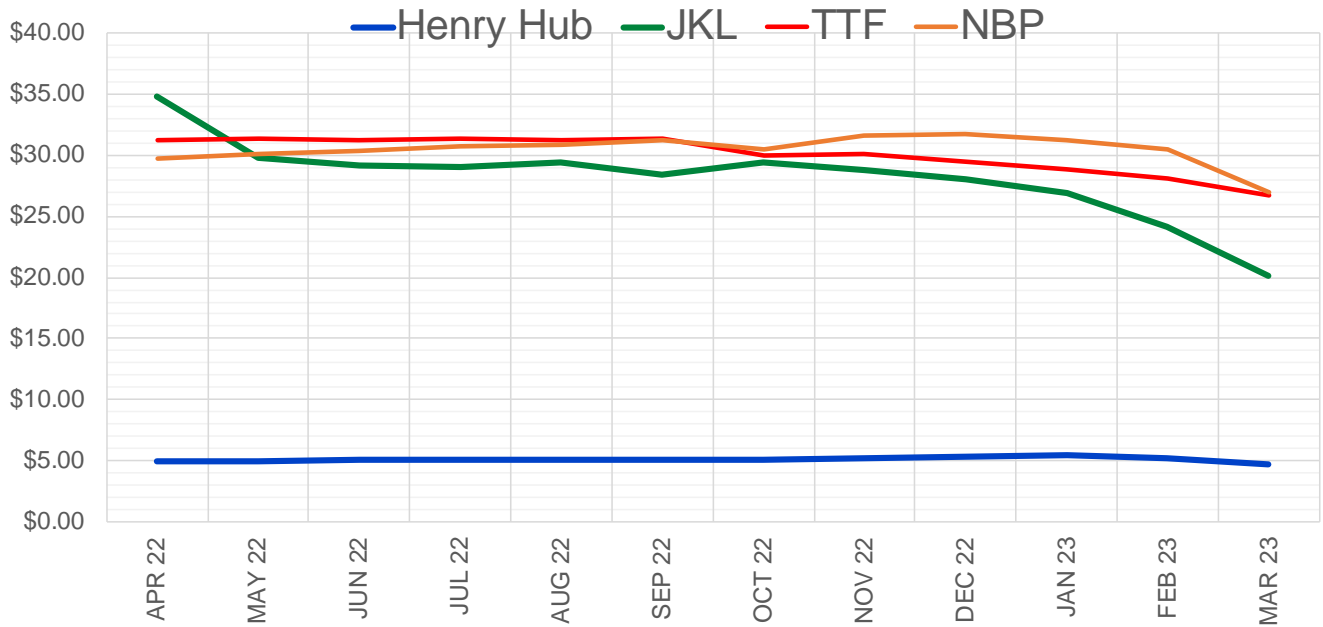
	Apr-22	May-22	Jun-22	Jul-22	Aug-22	Sep-22	Oct-22	Nov-22	Dec-22	Jan-23	Feb-23	Mar-23
<b>Current Price</b>	<b>\$4.863</b>	<b>\$4.902</b>	<b>\$4.946</b>	<b>\$4.997</b>	<b>\$5.004</b>	<b>\$4.984</b>	<b>\$4.999</b>	<b>\$5.069</b>	<b>\$5.208</b>	<b>\$5.301</b>	<b>\$5.126</b>	<b>\$4.641</b>
Last Week	\$4.725	\$4.766	\$4.819	\$4.878	\$4.889	\$4.874	\$4.891	\$4.975	\$5.129	\$5.225	\$5.039	\$4.570
vs. Last Week	\$0.138	\$0.136	\$0.127	\$0.119	\$0.115	\$0.110	\$0.108	\$0.094	\$0.079	\$0.076	\$0.087	\$0.071
4 Weeks Ago	\$4.431	\$4.377	\$4.398	\$4.443	\$4.496	\$4.505	\$4.488	\$4.510	\$4.600	\$4.753	\$4.851	\$4.687
vs. 4 Weeks Ago	\$0.432	\$0.525	\$0.548	\$0.554	\$0.508	\$0.479	\$0.511	\$0.559	\$0.608	\$0.548	\$0.275	-\$0.046
Last Year	\$2.535	\$2.566	\$2.624	\$2.682	\$2.696	\$2.686	\$2.702	\$2.775	\$2.907	\$3.004	\$2.951	\$2.780
vs. Last Year	\$2.328	\$2.336	\$2.322	\$2.315	\$2.308	\$2.298	\$2.297	\$2.294	\$2.301	\$2.297	\$2.175	\$1.861

	Units	Cash Settled	Prompt Settle	Cash to Prompt
AGT Citygate	\$/MMBtu	4.75	4.83	0.08
TETCO M3	\$/MMBtu	4.03	4.09	0.06
FGT Zone 3	\$/MMBtu	3.91	4.73	0.82
Zone 6 NY	\$/MMBtu	3.91	4.04	0.13
Chicago Citygate	\$/MMBtu	4.22	4.50	0.28
Michcon	\$/MMBtu	4.41	4.49	0.08
Columbia TCO Pool	\$/MMBtu	3.94	4.11	0.17
Ventura	\$/MMBtu	4.13	4.42	0.29
Rockies/Opal	\$/MMBtu	4.18	4.18	0.00
El Paso Permian Basin	\$/MMBtu	3.99	3.97	-0.02
Socal Citygate	\$/MMBtu	4.43	4.27	-0.16
Malin	\$/MMBtu	4.28	4.26	-0.02
Houston Ship Channel	\$/MMBtu	4.25	4.49	0.24
Henry Hub Cash	\$/MMBtu	4.77	4.43	-0.34
AECO Cash	C\$/GJ	3.86	3.52	-0.34
Station2 Cash	C\$/GJ	3.73	4.12	0.39
Dawn Cash	C\$/GJ	4.48	4.54	0.06

Source: CME, Bloomberg

	Units	Current Price	vs. Last Week	vs. 4 Weeks Ago	vs. Last Year
NatGas Jul21/Oct21	\$/MMBtu	2.224	▲ 0.000	▲ 0.000	▲ 2.204
NatGas Oct21/Nov21	\$/MMBtu	0.361	▲ 0.000	▲ 0.000	▲ 0.291
NatGas Oct21/Jan22	\$/MMBtu	-1.817	▲ 0.000	▲ 0.000	▼ -2.109
NatGas Apr22/Oct22	\$/MMBtu	0.128	▼ -0.033	▼ -0.005	▲ 0.079
WTI Crude	\$/Bbl	112.12	▲ 9.110	▲ 21.050	▲ 50.570
Brent Crude	\$/Bbl	115.62	▲ 8.720	▲ 20.230	▲ 51.000
Fuel Oil, NY Harbour 1%	\$/Bbl	97.18	▲ 0.000	▲ 0.000	▲ 0.000
Heating Oil	cents/Gallon	380.09	▲ 52.460	▲ 101.940	▲ 197.160
Propane, Mt. Bel	cents/Gallon	1.43	▲ 0.037	▲ 0.143	▲ 0.506
Ethane, Mt. Bel	cents/Gallon	0.42	▲ 0.009	▲ 0.030	▲ 0.207
Coal, PRB	\$/MTon	12.30	▲ 0.000	▲ 0.000	▲ 0.000
Coal, PRB	\$/MMBtu	0.70			
Coal, ILB	\$/MTon	31.05	▲ 0.000	▲ 0.000	▲ 0.000
Coal, ILB	\$/MMBtu	1.32			

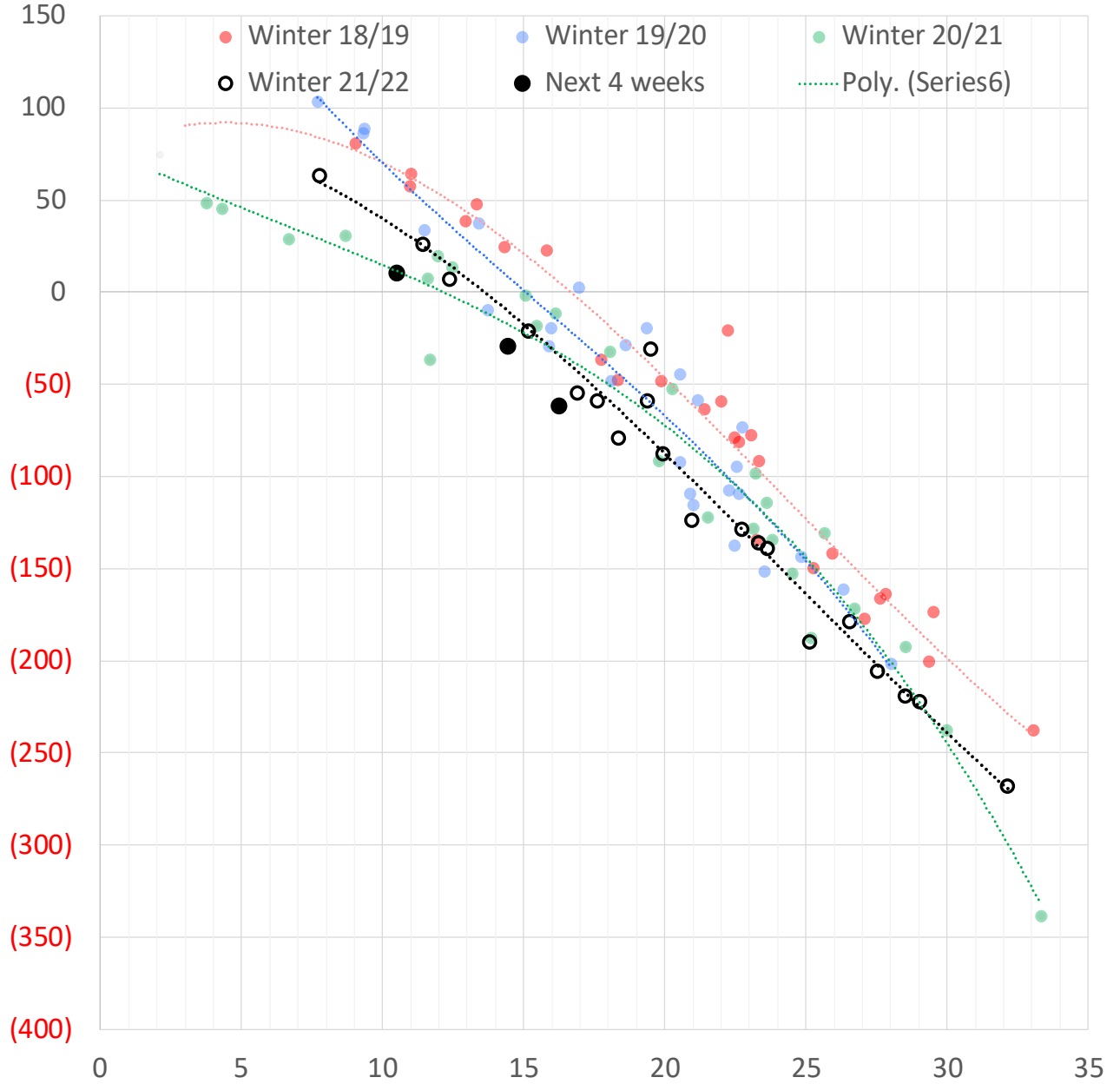
### Nat Gas Term Structure (\$MMBTU)



	APR 22	MAY 22	JUN 22	JUL 22	AUG 22	SEP 22	OCT 22	NOV 22	DEC 22	JAN 23	FEB 23	MAR 23
<b>Henry Hub</b>	\$4.943	\$4.975	\$5.023	\$5.068	\$5.078	\$5.061	\$5.074	\$5.143	\$5.278	\$5.387	\$5.211	\$4.698
<b>JKL</b>	\$34.810	\$29.845	\$29.155	\$29.050	\$29.465	\$28.400	\$29.395	\$28.755	\$28.085	\$26.875	\$24.210	\$20.145
JKL-HHub	\$29.867	\$24.870	\$24.132	\$23.982	\$24.387	\$23.339	\$24.321	\$23.612	\$22.807	\$21.488	\$18.999	\$15.447
<b>TTF</b>	\$31.204	\$31.353	\$31.311	\$31.336	\$31.318	\$31.350	\$30.032	\$30.072	\$29.540	\$28.864	\$28.138	\$26.774
TTF-HHub	\$26.261	\$26.378	\$26.288	\$26.268	\$26.240	\$26.289	\$24.958	\$24.929	\$24.262	\$23.477	\$22.927	\$22.076
<b>NBP</b>	\$29.735	\$30.085	\$30.348	\$30.772	\$30.926	\$31.282	\$30.537	\$31.661	\$31.731	\$31.234	\$30.529	\$27.024
NBP-HHub	\$24.792	\$25.110	\$25.325	\$25.704	\$25.848	\$26.221	\$25.463	\$26.518	\$26.453	\$25.847	\$25.318	\$22.326

The risk of trading futures and options and other derivatives involves a substantial risk of loss and is not suitable for all persons. Each person must consider whether a particular trade, combination of trades, or strategy is suitable for that person's financial means and objectives. Past results are not necessarily indicative of future results. This communication may contain links to third party websites which are not under the control of and are not maintained by ION Energy Group, and ION Energy Group is not responsible for their content.

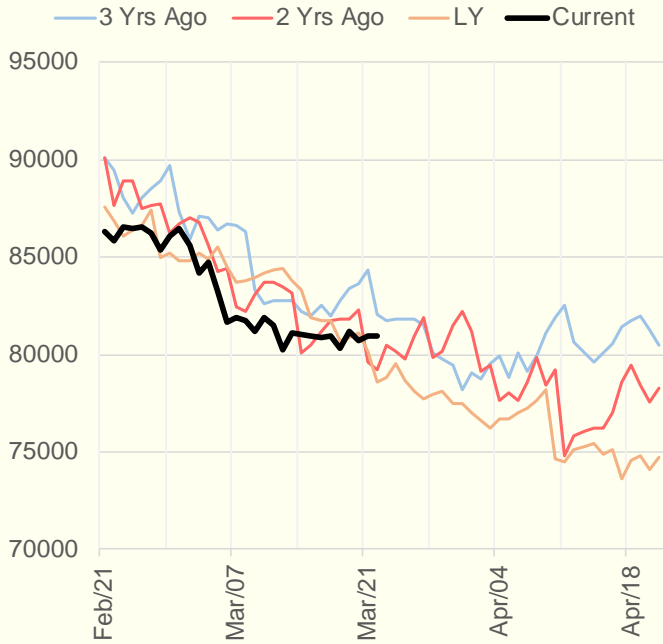
### Weather Storage Model - Next 4 Week Forecast



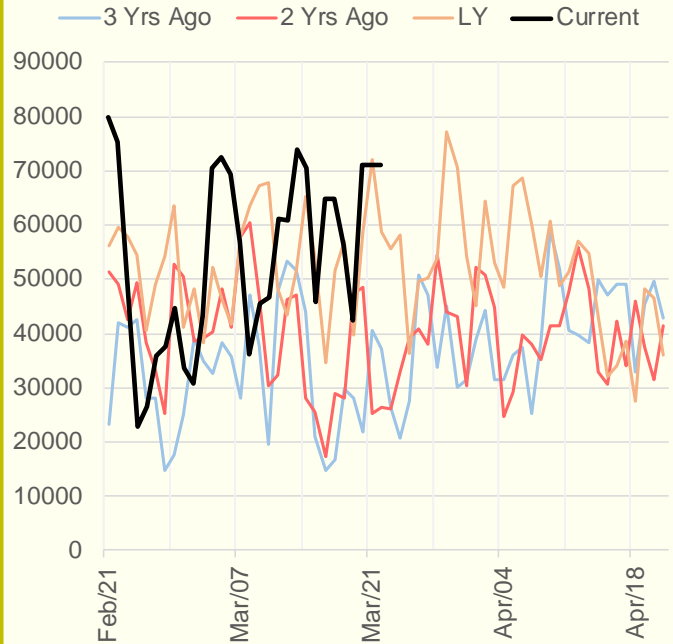
The risk of trading futures and options and other derivatives involves a substantial risk of loss and is not suitable for all persons. Each person must consider whether a particular trade, combination of trades, or strategy is suitable for that person's financial means and objectives. Past results are not necessarily indicative of future results. This communication may contain links to third party websites which are not under the control of and are not maintained by ION Energy Group, and ION Energy Group is not responsible for their content.



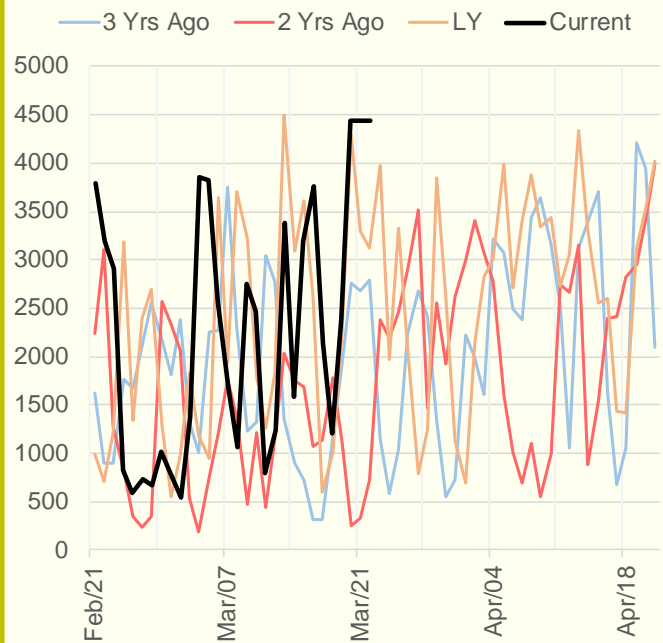
### NRC Nuclear Daily Output



### US Wind



### CALI Wind



### TEXAS Wind

