

	Current	Δ from YD	Δ from 7D Avg
Nat Gas Prompt	\$ 5.22	▼ \$ (0.01)	▲ \$ 0.24

	Current	Δ from YD	Δ from 7D Avg
WTI Prompt	\$ 114.83	▼ \$ (0.10)	▲ \$ 6.8

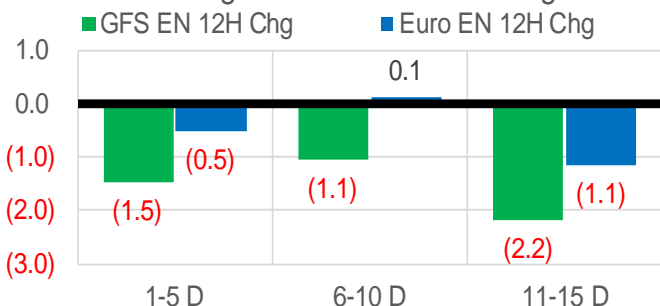
	Current	Δ from YD	Δ from 7D Avg
Brent Prompt	\$ 121.51	▼ \$ (0.09)	▲ \$ 9.6

Page Menu

- [Short-term Weather Model Outlooks](#)
- [Lower 48 Component Models](#)
- [Regional S/D Models Storage Projection](#)
- [Weather Model Storage Projection](#)
- [Supply – Demand Trends](#)
- [Nat Gas Options Volume and Open Interest](#)
- [Nat Gas Futures Open Interest](#)
- [Price Summary](#)

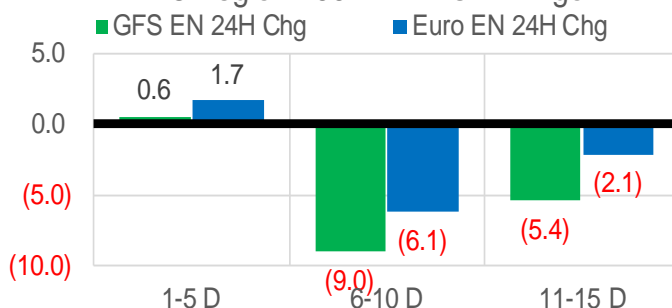
Vs. 12H Ago

L48 Region - 00z TDD vs 12H Ago



Vs. 24H Ago

L48 Region - 00z TDD vs 24H Ago



	Current	Δ from YD	Δ from 7D Avg
US Dry Production	95.2	▲ 0.13	▲ 0.36

	Current	Δ from YD	Δ from 7D Avg
US Power Burns	27.6	▲ 0.07	▲ 2.27

	Current	Δ from YD	Δ from 7D Avg
US ResComm	24.5	▼ -0.79	▲ 1.94

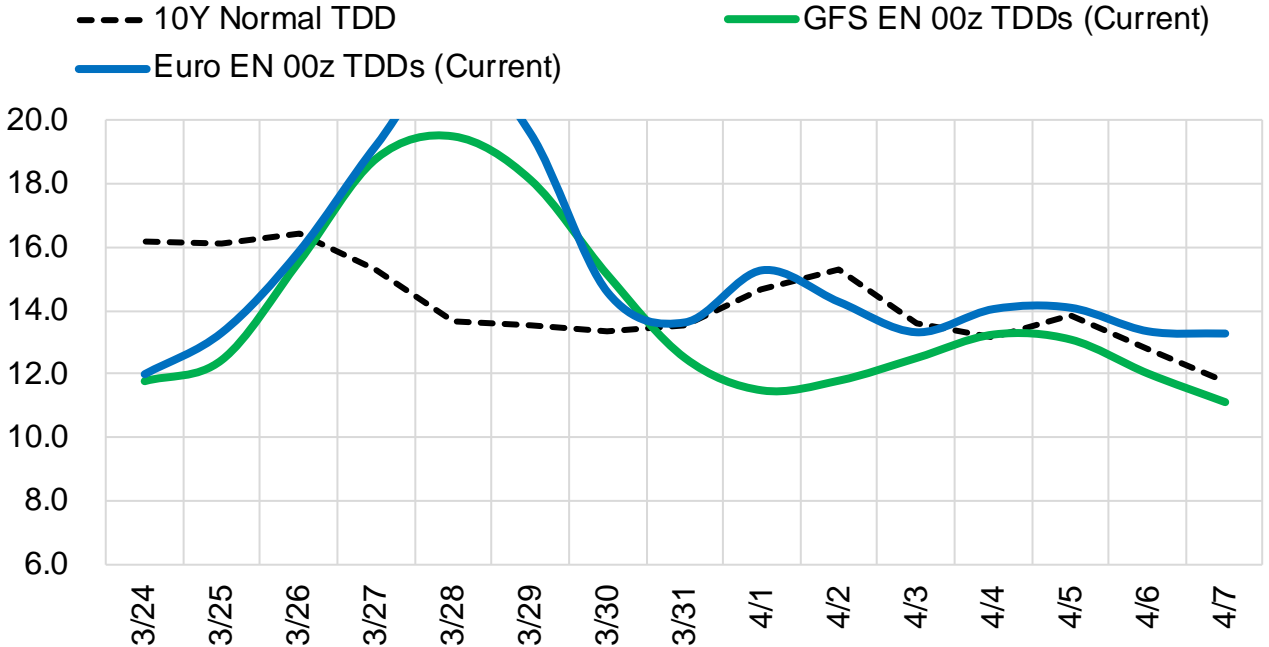
	Current	Δ from YD	Δ from 7D Avg
Canadian Imports	5.2	▲ 0.02	▲ 0.49

	Current	Δ from YD	Δ from 7D Avg
Net LNG Exports	13.5	▲ 0.32	▲ 0.63

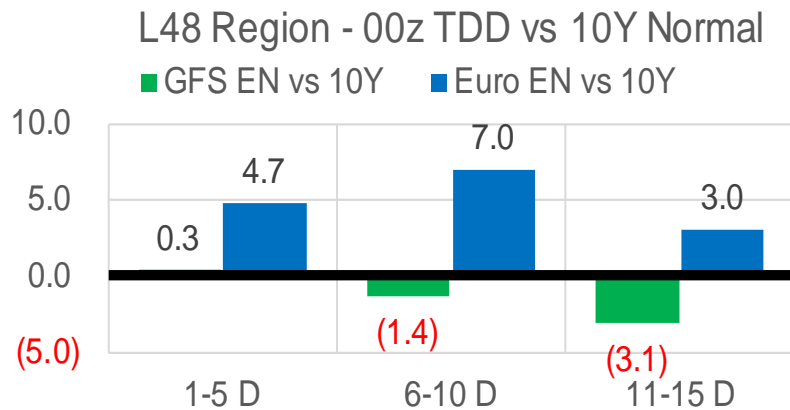
	Current	Δ from YD	Δ from 7D Avg
Mexican Exports	6.7	▲ 0.08	▲ 0.22

Short-term Weather Model Outlooks (00z)

L48 Region



Vs. 10Y Normal



Source: WSI , Bloomberg

Lower 48 Component Models

Daily Balances

	18-Mar	19-Mar	20-Mar	21-Mar	22-Mar	23-Mar	24-Mar	DoD	vs. 7D
Lower 48 Dry Production	94.2	95.0	95.2	95.2	94.8	95.1	95.2	▲ 0.1	▲ 0.3
Canadian Imports	4.7	4.7	4.7	4.6	4.5	5.2	5.2	▲ 0.0	▲ 0.5
L48 Power	25.1	24.9	23.6	24.8	25.7	27.5	27.6	▲ 0.1	▲ 2.3
L48 Residential & Commercial	21.0	23.1	23.5	21.4	23.3	25.2	24.5	▼ -0.8	▲ 1.5
L48 Industrial	19.2	19.5	19.3	19.1	19.7	20.1	20.7	▲ 0.6	▲ 1.2
L48 Lease and Plant Fuel	5.1	5.2	5.2	5.2	5.2	5.2	5.2	▼ 0.0	▼ 0.0
L48 Pipeline Distribution	2.4	2.5	2.5	2.4	2.6	2.7	2.7	▼ 0.0	▲ 0.2
L48 Regional Gas Consumption	72.8	75.2	74.0	72.9	76.5	80.8	80.6	▼ -0.2	▲ 5.2
Net LNG Delivered	12.35	13.75	13.40	12.56	12.17	13.17	13.48	▲ 0.3	▲ 0.6
Total Mexican Exports	6.7	6.4	6.1	6.3	6.8	6.7	6.7	▲ 0.1	▲ 0.2
Implied Daily Storage Activity	7.0	4.3	6.4	8.2	3.9	-0.3	-0.4		
EIA Reported Daily Storage Activity									
Daily Model Error									

EIA Storage Week Balances

	11-Feb	18-Feb	25-Feb	4-Mar	11-Mar	18-Mar	WoW	vs. 4W
Lower 48 Dry Production	91.5	95.6	94.2	94.1	94.8	93.8	▼ -1.0	▼ -0.9
Canadian Imports	7.1	6.2	6.4	5.9	5.2	5.2	▲ 0.0	▼ -0.7
L48 Power	29.4	26.8	27.3	28.8	27.7	27.4	▼ -0.3	▼ -0.2
L48 Residential & Commercial	45.8	40.3	41.4	38.7	33.3	31.6	▼ -1.7	▼ -6.8
L48 Industrial	24.6	26.1	26.2	23.1	22.4	21.6	▼ -0.9	▼ -2.9
L48 Lease and Plant Fuel	5.0	5.2	5.1	5.1	5.2	5.1	▼ -0.1	▼ -0.1
L48 Pipeline Distribution	3.5	3.2	3.2	3.3	3.2	3.1	▼ -0.1	▼ -0.2
L48 Regional Gas Consumption	108.3	101.6	103.2	99.0	91.7	88.7	▼ -3.0	▼ -10.2
Net LNG Exports	12.4	13.0	11.7	12.5	12.8	12.9	▲ 0.1	▲ 0.4
Total Mexican Exports	6.1	6.1	6.1	6.4	6.6	6.5	▼ 0.0	▲ 0.3
Implied Daily Storage Activity	-28.2	-18.9	-20.5	-17.9	-11.1	-9.1	2.0	
EIA Reported Daily Storage Activity	-27.1	-18.4	-19.9	-17.7	-11.3			
Daily Model Error	-1.1	-0.4	-0.6	-0.2	0.2			

Monthly Balances

	2Yr Ago Mar-20	LY Mar-21	Nov-21	Dec-21	Jan-22	Feb-22	MTD Mar-22	MoM	vs. LY
Lower 48 Dry Production	94.2	91.3	95.7	96.2	94.3	93.5	94.5	▲ 1.0	▲ 3.2
Canadian Imports	4.1	4.8	5.3	4.8	6.7	6.6	5.1	▼ -1.5	▲ 0.4
L48 Power	28.3	24.5	29.2	28.5	30.7	28.2	27.0	▼ -1.2	▲ 2.5
L48 Residential & Commercial	27.6	28.9	28.4	33.8	49.1	43.1	29.8	▼ -13.3	▲ 0.9
L48 Industrial	22.3	19.3	23.0	22.9	26.4	25.6	20.9	▼ -4.6	▲ 1.7
L48 Lease and Plant Fuel	5.1	5.0	5.3	5.3	5.2	5.1	5.1	▲ 0.0	▲ 0.2
L48 Pipeline Distribution	2.9	2.8	2.9	3.2	3.9	3.4	3.0	▼ -0.4	▲ 0.2
L48 Regional Gas Consumption	86.2	80.4	88.8	93.7	115.2	105.3	85.7	▼ -19.5	▲ 5.3
Net LNG Exports	8.5	11.1	11.4	12.1	12.4	12.4	12.8	▲ 0.4	▲ 1.6
Total Mexican Exports	5.4	6.5	6.1	6.2	6.3	6.2	6.5	▲ 0.4	▲ 0.1
Implied Daily Storage Activity	-1.9	-2.0	-5.3	-11.0	-32.9	-23.8	-5.4		
EIA Reported Daily Storage Activity									
Daily Model Error									

Source: Bloomberg, analytix.ai

Daily Average Generation Data

Nuclear Generation Daily Average - GWh (NRC)

	16-Mar	17-Mar	18-Mar	19-Mar	20-Mar	21-Mar	22-Mar	DoD	vs. 7D
NRC Nuclear Daily Output	80.8	80.9	80.3	81.2	80.7	80.9	81.1	0.1	0.2
NRC Nuclear Max Capacity	104.9	104.9	104.9	104.9	104.9	104.9	104.9	0.0	0.0
NRC Nuclear Outage	24.0	24.0	24.6	23.7	24.1	23.9	23.8	-0.1	-0.2
NRC % Nuclear Cap Utilization	82.2	82.3	81.7	82.6	82.1	82.3	82.4	0.1	0.3

Wind Generation Daily Average - MWh (EIA)

	16-Mar	17-Mar	18-Mar	19-Mar	20-Mar	21-Mar	22-Mar	DoD	vs. 7D
CALI Wind	3754	2133	1205	2389	4439	2310	1350	-961	-1355
TEXAS Wind	17943	21634	13520	9277	21826	20711	21413	702	3928
US Wind	64917	64962	56281	42567	71136	73165	73357	192	11186

Generation Daily Average - MWh (EIA)

	16-Mar	17-Mar	18-Mar	19-Mar	20-Mar	21-Mar	22-Mar	DoD	vs. 7D
US Wind	64917	64962	56281	42567	71136	73165	73357	192	11186
US Solar	13151	12252	14533	11840	12003	14866	12893	-1973	-214
US Petroleum	785	690	894	566	689	832	950	119	207
US Other	7042	7140	6545	7467	8432	8267	6779	-1489	-704
US Coal	75566	74033	73254	78356	65922	67868	70690	2822	-1810
US Nuke	84847	84398	82584	84704	84317	82890	83996	1106	40
US Hydro	33486	36367	34453	31637	29909	34728	34245	-483	815
US Gas	124559	122511	124405	125630	104762	117930	121065	3136	1099

See National Wind and Nuclear daily charts

Source: Bloomberg, analytix.ai

Storage Week Average Generation Data

Nuclear Generation Weekly Average - GWh (NRC)

	11-Feb	18-Feb	25-Feb	4-Mar	11-Mar	18-Mar	WoW	WoW Bcf/d Impact
NRC Nuclear Daily Output	87.6	88.2	86.9	85.8	82.3	80.9	-1.4	0.3
NRC Nuclear Max Capacity	104.9	104.9	104.9	104.9	104.9	104.9	0.0	
NRC Nuclear Outage	17.3	16.7	18.0	19.1	22.5	23.9	1.4	
NRC % Nuclear Cap Utilization	89.1	89.7	88.3	87.2	83.7	82.3	-1.4	

Wind Generation Weekly Average - MWh (EIA)

	11-Feb	18-Feb	25-Feb	4-Mar	11-Mar	18-Mar	WoW	WoW Bcf/d Impact
CALI Wind	999	1900	2049	815	2602	2297	-305	0.1
TEXAS Wind	9259	16874	13068	6269	14469	17742	3273	-0.6
US Wind	53792	63113	60313	36019	56828	63171	6343	-1.1
							11%	
						0.2		

Generation Weekly Average - MWh (EIA)

	11-Feb	18-Feb	25-Feb	4-Mar	11-Mar	18-Mar	WoW	WoW Bcf/d Impact
						est.		
US Wind	53792	63113	60313	36019	56828	63171	6343	-1.1
US Solar	12287	12313	11899	13919	12582	13711	1129	-0.2
US Petroleum	3554	4126	2961	3130	1742	961	-780	0.1
US Other	9373	9134	8211	7510	6621	7028	407	-0.1
US Coal	113776	101700	99888	103399	86717	86015	-702	0.1
US Nuke	92640	92758	91458	90165	86462	84792	-1670	0.3
US Hydro	32213	31952	33214	32196	34570	34888	318	-0.1
US Gas	162266	137939	147276	158688	140400	136974	-3426	0.6

See National Wind and Nuclear daily charts

Source: Bloomberg, analytix.ai

Monthly Average Generation Data

Nuclear Generation Monthly Average - GWh (NRC)

	2Yr Ago		LY		MTD		Last 30 days	MoM (MTD vs LY)	Last 30 days YoY
	Same 30 days	Same 30 days	Dec-21	Jan-22	Feb-22	Mar-22			
NRC Nuclear Daily Output	83.8	83.4	90.3	90.2	87.6	81.9	82.8	-5.6	-0.7
NRC Nuclear Max Capacity	104.9	104.9	104.9	104.9	104.9	104.9	104.9	0.0	0.0
NRC Nuclear Outage	21.1	21.4	14.6	14.7	17.3	23.0	22.1	5.6	0.7
NRC % Nuclear Cap Utilization	85.2	84.8	91.8	91.7	89.0	83.3	84.2	-5.7	-0.7

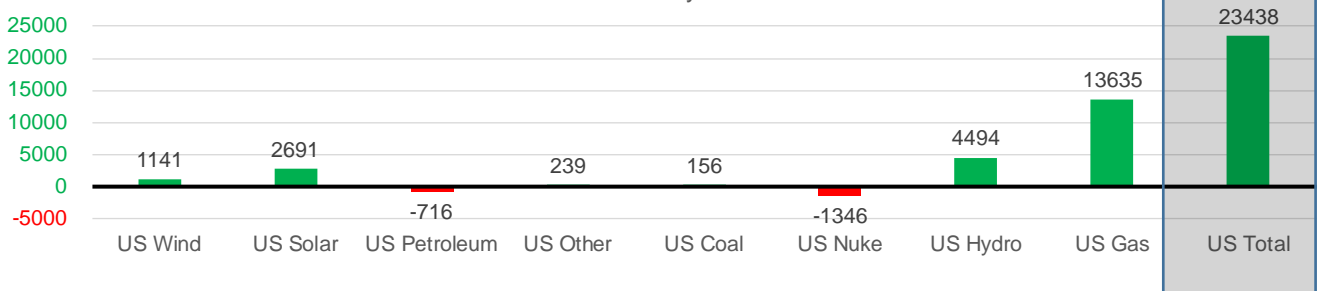
Wind Generation Monthly Average - MWh (EIA)

	2Yr Ago		LY		MTD		Last 30 days	MoM (MTD vs LY)	Last 30 days YoY
	Same 30 days	Same 30 days	Dec-21	Jan-22	Feb-22	Mar-22			
CALI Wind	1187	2313	1482	1244	1559	2141	1938	583	-375
TEXAS Wind	9793	13726	12927	11355	12294	15627	13848	3333	122
US Wind	38518	53153	54708	51045	56538	58780	54294	2243	1141

Generation Monthly Average - MWh (EIA)

	2Yr Ago		LY		MTD		Last 30 days	MoM (MTD vs LY)	Last 30 days YoY
	Same 30 days	Same 30 days	Dec-21	Jan-22	Feb-22	Mar-22			
US Wind	38518	53153	54708	51045	56538	58780	54294	▼-4486.6	▲ 1141
US Solar	7321	10471	7375	9476	12088	13333	13162	▼-171.8	▲ 2691
US Petroleum	3365	2557	3135	5021	3449	1409	1841	▲ 432	▼-716
US Other	7083	6975	8222	8792	8831	6942	7214	▲ 272	▲ 239
US Coal	72683	88398	81462	117971	106587	83177	88554	▲ 5377	▲ 156
US Nuke	85347	87961	95449	95259	92275	85578	86615	▲ 1037	▼-1346
US Hydro	32883	29237	30824	34040	32212	34100	33731	▼-369	▲ 4494
US Gas	155868	128146	152639	164024	152048	134170	141781	▲ 2092	▲ 13635
US Total	401376	405373	433931	485812	464579	419411	428811	▲ 8670	▲ 23438

Last 30 days YoY



See National Wind and Nuclear daily charts

Source: Bloomberg, analytix.ai

Regional S/D Models Storage Projection

Week Ending 18-Mar

	Daily Raw Storage	Daily Adjustment Factor	Daily Average Storage Activity (Adjusted) *	Weekly Adjusted Storage Activity
L48	-8.7	0.0	-8.7	-61
East	-5.6	2.1	-3.5	-25
Midwest	-2.3	-0.3	-2.6	-19
Mountain	3.5	-3.8	-0.3	-2
South Central	-4.4	1.9	-2.4	-17
Pacific	0.1	0.1	0.2	1

*Adjustment Factor is calculated based on historical regional deltas

U.S. underground natural gas storage facilities by type (July 2015)

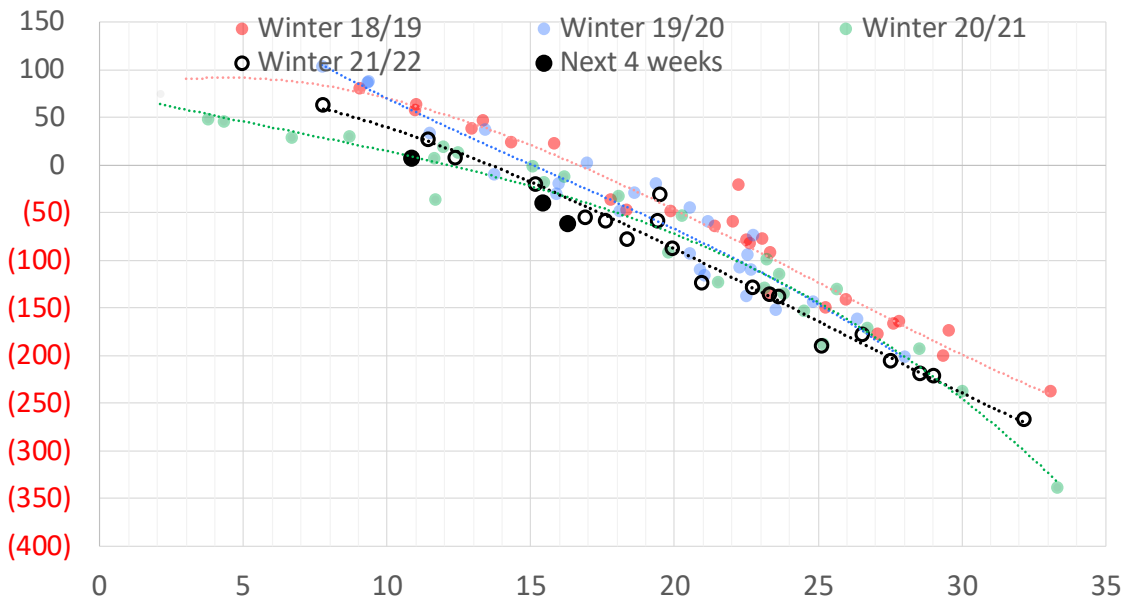


Weather Model Storage Projection

Next report
and beyond

Week Ending	GWDDs	Week Storage Projection
18-Mar	16	-61
25-Mar	11	8
01-Apr	15	-40
08-Apr	#N/A	#N/A

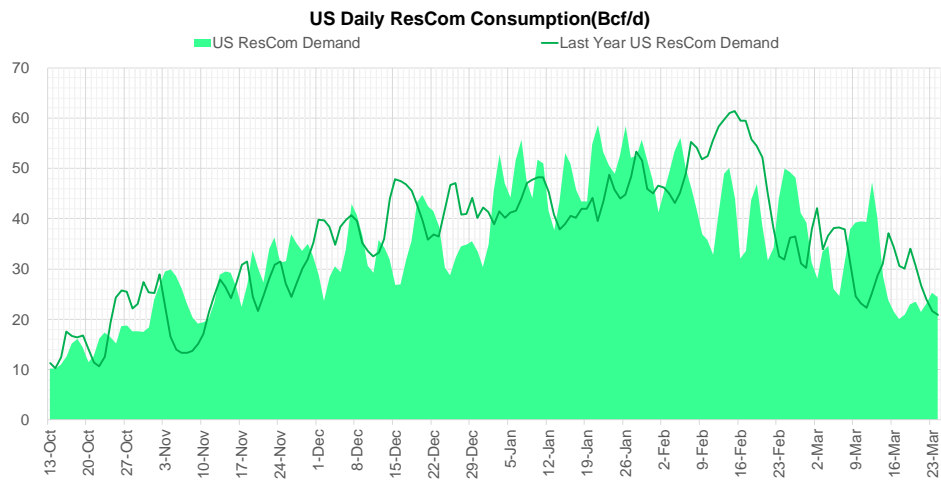
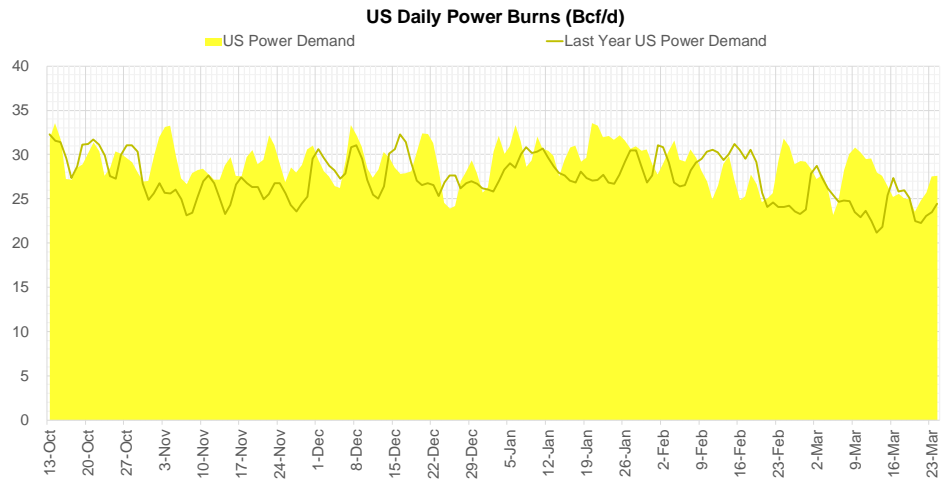
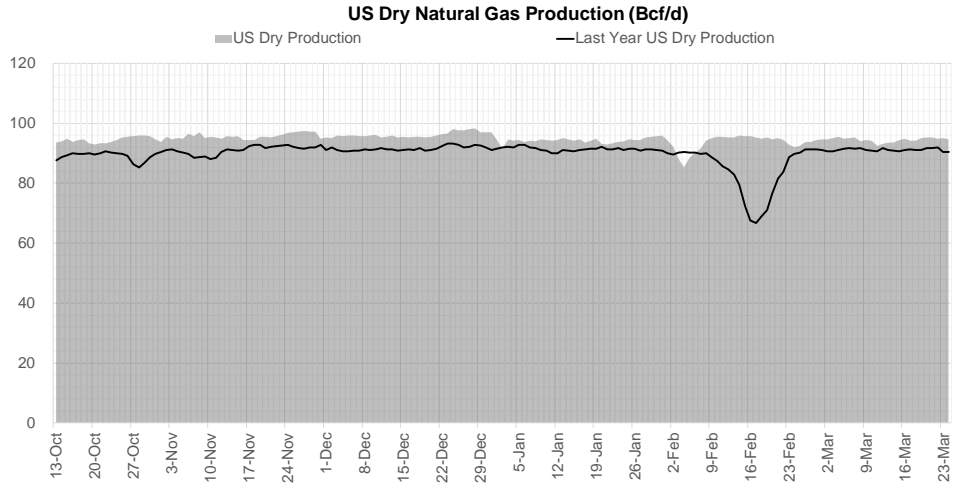
Weather Storage Model - Next 4 Week Forecast



Go to larger image



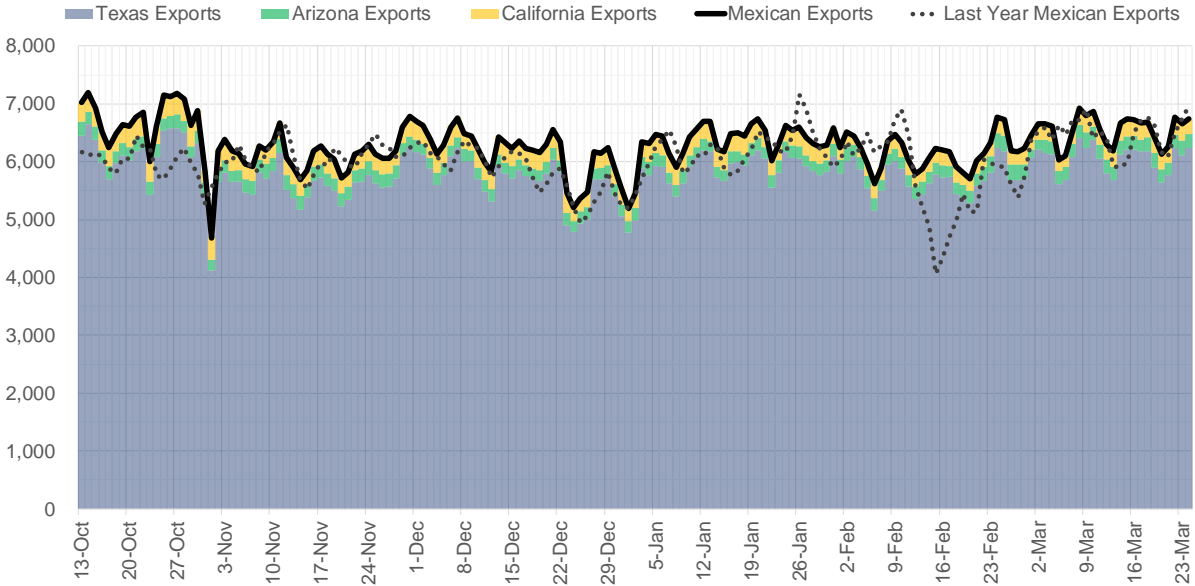
Supply – Demand Trends



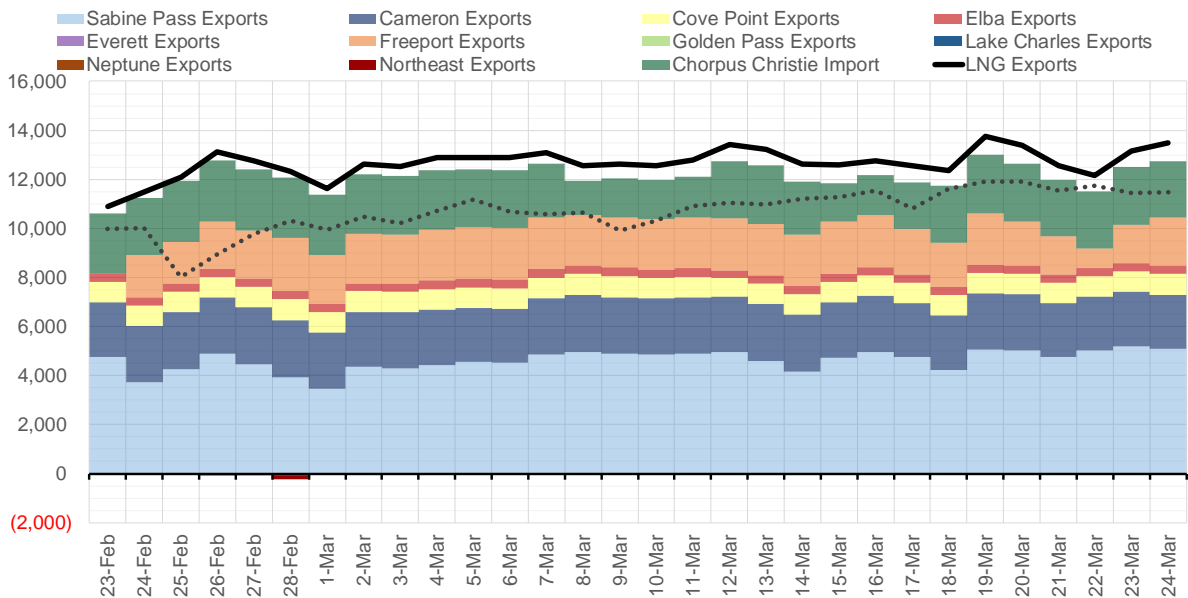
Source: Bloomberg

The risk of trading futures and options and other derivatives involves a substantial risk of loss and is not suitable for all persons. Each person must consider whether a particular trade, combination of trades, or strategy is suitable for that person's financial means and objectives. Past results are not necessarily indicative of future results. This communication may contain links to third party websites which are not under the control of and are not maintained by ION Energy Group, and ION Energy Group is not responsible for their content.

Mexican Exports (MMcf/d)



Net LNG Exports - Last 30 days (MMcf/d)



Source: Bloomberg

The risk of trading futures and options and other derivatives involves a substantial risk of loss and is not suitable for all persons. Each person must consider whether a particular trade, combination of trades, or strategy is suitable for that person's financial means and objectives. Past results are not necessarily indicative of future results. This communication may contain links to third party websites which are not under the control of and are not maintained by ION Energy Group, and ION Energy Group is not responsible for their content.

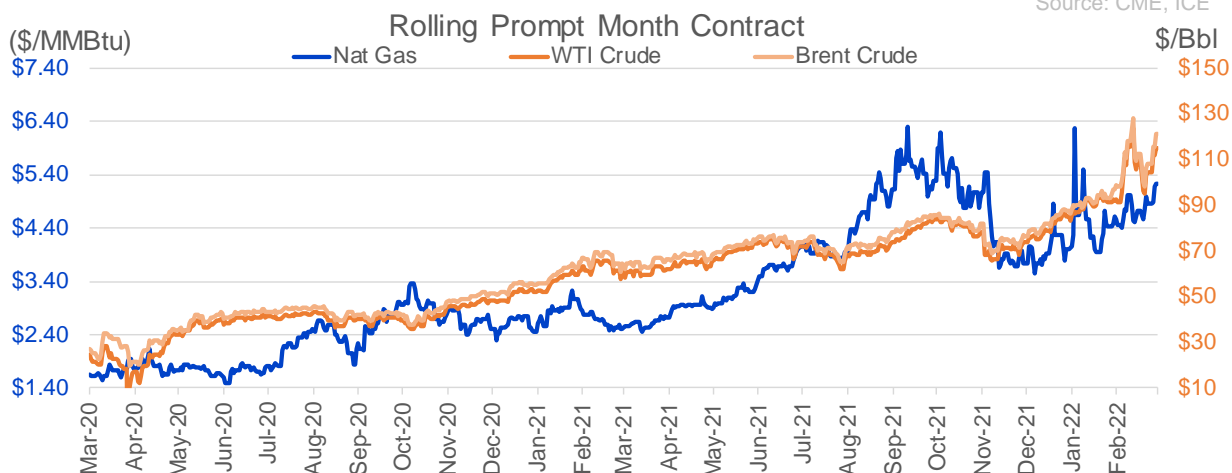
Nat Gas Options Volume and Open Interest CME and ICE Combined

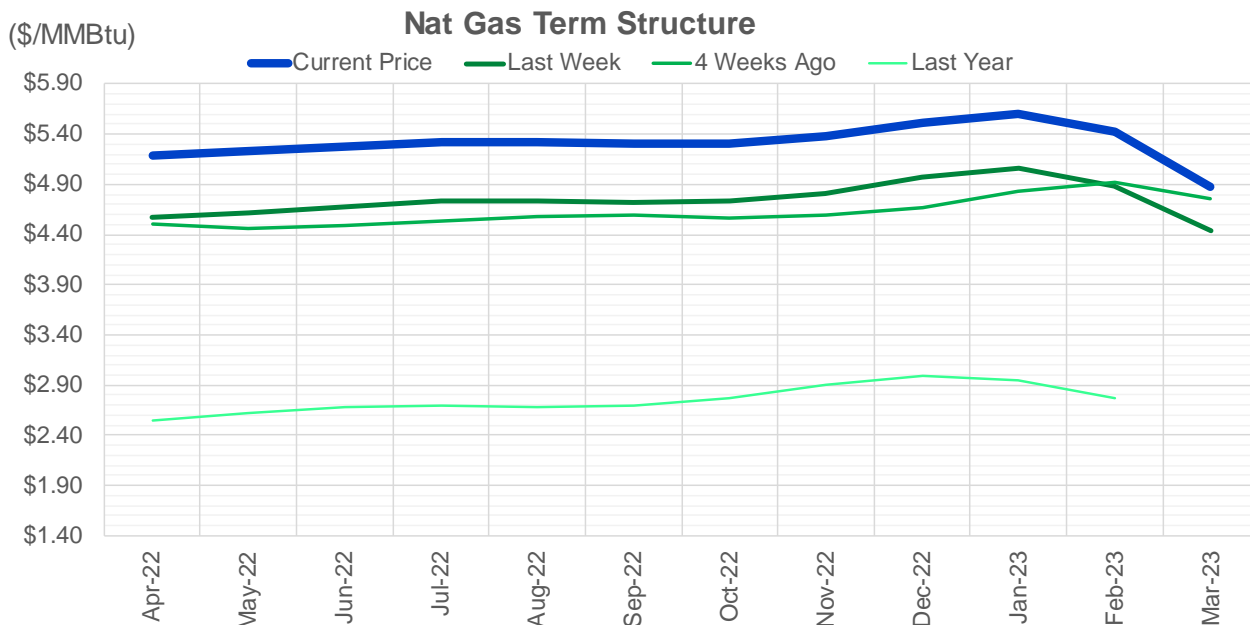
CONTRACT MONTH	CONTRACT YEAR	PUT/CALL	STRIKE	CUMULATIVE VOL	CONTRACT MONTH	CONTRACT YEAR	PUT/CALL	STRIKE	CUMULATIVE OI
4	2022	C	6.00	9252	4	2022	P	3.50	34161
4	2022	P	5.00	6740	4	2022	C	4.75	30106
10	2022	P	2.50	5100	10	2022	C	6.00	29169
10	2022	P	2.75	5050	4	2022	P	3.00	28297
5	2022	P	4.50	4895	4	2022	C	5.00	28264
4	2022	C	5.50	4572	10	2022	C	5.00	26039
5	2022	C	8.00	3846	4	2022	P	4.00	24939
5	2022	C	7.00	3683	5	2022	P	4.00	24511
4	2022	P	4.85	3412	4	2022	C	6.00	24376
5	2022	P	4.00	3293	4	2022	P	3.75	23646
12	2022	C	6.00	2775	5	2022	C	6.00	23191
6	2022	C	6.00	2736	4	2022	P	4.50	23151
4	2022	P	4.70	2681	5	2022	P	3.00	22913
4	2022	P	5.10	2445	6	2022	C	6.00	22616
1	2023	C	6.00	2260	5	2022	C	5.00	22378
6	2022	P	4.00	2227	7	2022	C	6.00	21645
11	2022	C	6.00	2075	6	2022	P	4.00	21341
4	2022	P	4.90	2066	9	2022	C	6.00	21223
6	2022	P	3.75	2050	8	2022	C	6.00	20798
5	2022	C	6.00	1801	4	2022	C	5.50	20695
2	2023	C	10.00	1721	5	2022	P	2.50	19874
3	2023	C	10.00	1692	5	2022	P	3.50	19470
1	2023	C	10.00	1675	10	2022	P	3.00	18243
12	2022	C	10.00	1625	6	2022	C	5.00	17984
5	2022	P	4.75	1554	12	2022	C	5.00	17768
5	2022	P	5.00	1513	5	2022	P	2.75	17685
6	2022	C	7.00	1505	4	2022	C	4.50	17622
4	2022	P	4.75	1444	7	2022	P	3.25	17562
12	2022	C	8.00	1400	4	2022	C	3.00	17511
4	2022	C	5.75	1383	6	2022	P	3.00	17505
10	2022	C	6.00	1368	4	2022	P	4.25	17255
4	2022	P	4.50	1363	4	2022	P	2.50	17245
11	2022	C	8.00	1300	10	2022	P	2.50	16881
12	2022	C	6.50	1280	5	2022	C	7.00	16531
4	2022	C	5.25	1155	4	2022	P	3.25	15846
4	2022	C	5.30	1130	10	2022	P	4.00	15841
1	2023	C	20.00	1100	4	2022	C	8.00	15416
8	2022	C	8.00	1079	6	2022	P	3.50	15367
5	2022	C	6.50	1069	10	2022	C	7.00	15305
6	2022	P	3.50	1045	9	2022	P	2.50	15136
3	2023	C	6.00	1010	5	2022	P	3.75	14765
12	2022	C	6.75	1000	10	2022	P	2.00	14571
12	2022	P	5.00	1000	8	2022	P	3.00	14497
5	2022	P	4.25	934	8	2022	C	7.00	14414
8	2022	P	4.75	913	6	2022	P	3.75	14371
7	2022	C	6.00	911	7	2022	P	3.00	14199
2	2023	C	6.00	910	6	2022	C	4.50	14045
4	2022	C	5.40	909	1	2023	C	5.00	14029
9	2022	C	6.00	905	9	2022	P	2.75	13933
					4	2022	C	7	13921.5

Source: CME, ICE

Nat Gas Futures Open Interest CME and ICE Combined

CME Henry Hub Futures (10,000 MMBtu)				ICE Henry Hub Futures Contract Equivalent (10,000 MM			
	Current	Prior	Daily Change		Current	Prior	Daily Change
APR 22	28919	34343	-5424	APR 22	76403	76991	-588
MAY 22	229056	224362	4694	MAY 22	83541	84153	-613
JUN 22	71761	70881	880	JUN 22	71244	70674	570
JUL 22	91543	90963	580	JUL 22	67084	66887	197
AUG 22	43915	43741	174	AUG 22	60682	60392	291
SEP 22	76461	76529	-68	SEP 22	64840	64710	131
OCT 22	79642	78387	1255	OCT 22	69176	68514	662
NOV 22	43054	43312	-258	NOV 22	53862	54028	-166
DEC 22	46346	45958	388	DEC 22	63171	63141	29
JAN 23	62379	60979	1400	JAN 23	65006	64682	325
FEB 23	20393	20456	-63	FEB 23	45669	45772	-104
MAR 23	38023	38672	-649	MAR 23	50742	50757	-15
APR 23	46553	46243	310	APR 23	49274	49254	20
MAY 23	27902	27781	121	MAY 23	44001	43977	24
JUN 23	15665	15506	159	JUN 23	41005	41027	-22
JUL 23	13679	12934	745	JUL 23	40257	40365	-108
AUG 23	10996	11043	-47	AUG 23	39777	39842	-65
SEP 23	13616	13476	140	SEP 23	39740	39804	-64
OCT 23	24702	25251	-549	OCT 23	44138	44334	-196
NOV 23	10518	10592	-74	NOV 23	40925	40796	130
DEC 23	14219	14203	16	DEC 23	36194	36095	99
JAN 24	18511	18501	10	JAN 24	32287	32306	-19
FEB 24	4169	3666	503	FEB 24	22727	22725	2
MAR 24	14568	14052	516	MAR 24	27674	27556	118
APR 24	7896	7541	355	APR 24	20959	20811	149
MAY 24	2356	2362	-6	MAY 24	19642	19643	-1
JUN 24	1199	1197	2	JUN 24	19770	19631	139
JUL 24	1489	1394	95	JUL 24	20164	20094	71
AUG 24	1576	1071	505	AUG 24	20330	20260	71
SEP 24	1204	1206	-2	SEP 24	19538	19543	-5





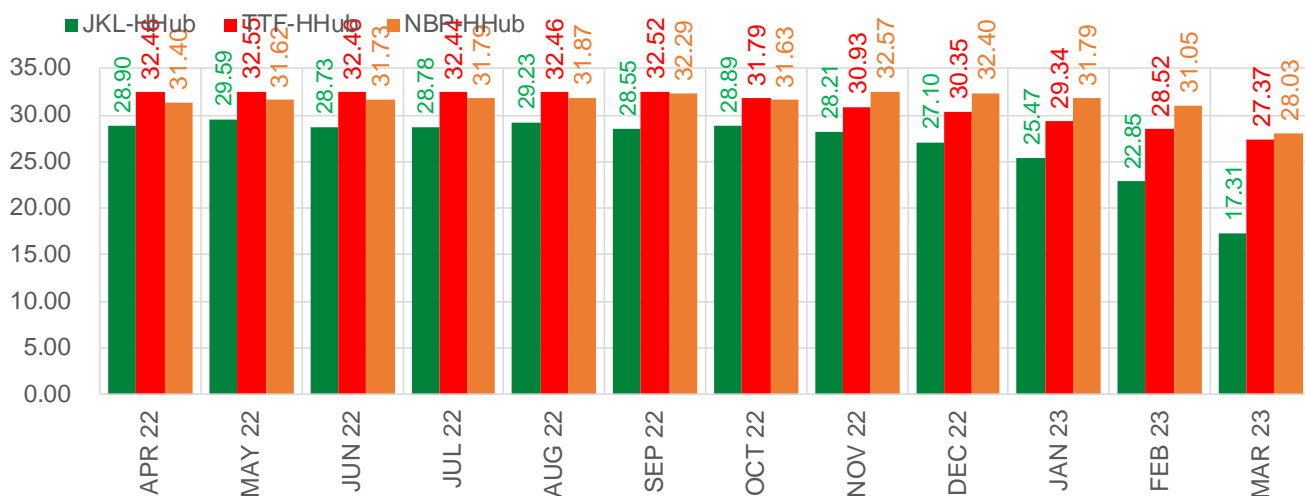
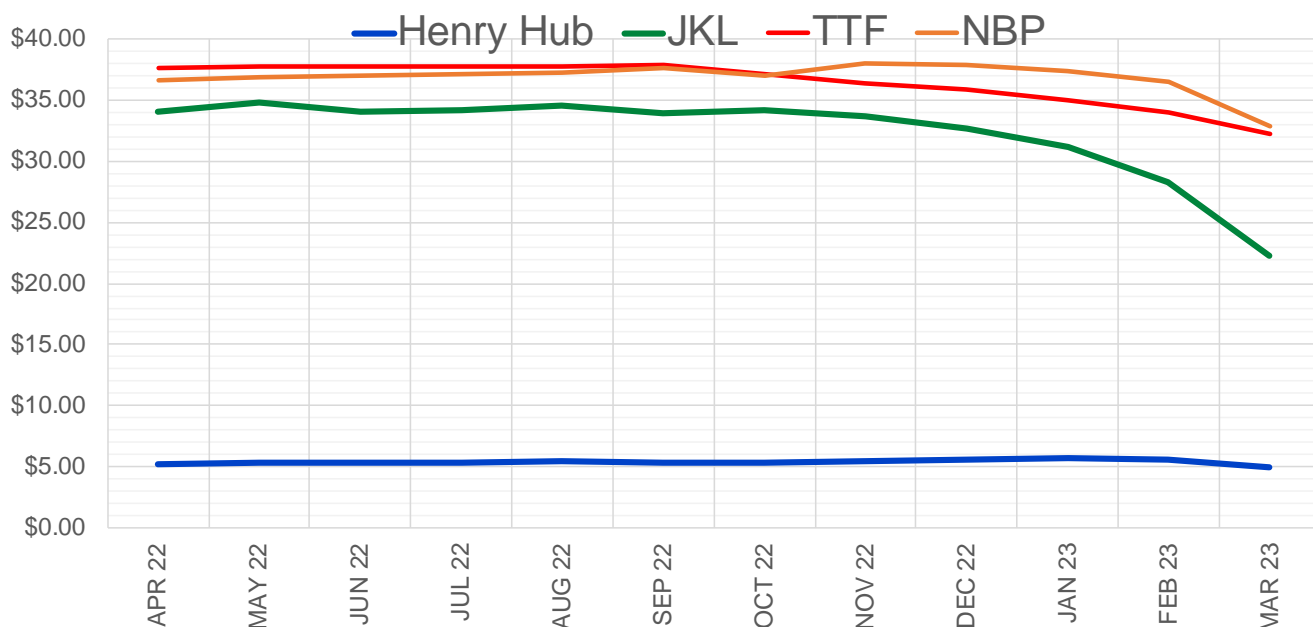
	Apr-22	May-22	Jun-22	Jul-22	Aug-22	Sep-22	Oct-22	Nov-22	Dec-22	Jan-23	Feb-23	Mar-23
Current Price	\$5.187	\$5.227	\$5.268	\$5.316	\$5.320	\$5.299	\$5.310	\$5.373	\$5.509	\$5.600	\$5.422	\$4.881
Last Week	\$4.568	\$4.617	\$4.670	\$4.727	\$4.737	\$4.720	\$4.736	\$4.813	\$4.964	\$5.059	\$4.887	\$4.442
vs. Last Week	\$0.619	\$0.610	\$0.598	\$0.589	\$0.583	\$0.579	\$0.574	\$0.560	\$0.545	\$0.541	\$0.535	\$0.439
4 Weeks Ago	\$4.498	\$4.461	\$4.483	\$4.527	\$4.579	\$4.586	\$4.569	\$4.589	\$4.673	\$4.826	\$4.922	\$4.751
vs. 4 Weeks Ago	\$0.689	\$0.766	\$0.785	\$0.789	\$0.741	\$0.713	\$0.741	\$0.784	\$0.836	\$0.774	\$0.500	\$0.130
Last Year	\$2.508	\$2.554	\$2.615	\$2.674	\$2.692	\$2.683	\$2.698	\$2.770	\$2.904	\$2.999	\$2.948	\$2.777
vs. Last Year	\$2.679	\$2.673	\$2.653	\$2.642	\$2.628	\$2.616	\$2.612	\$2.603	\$2.605	\$2.601	\$2.474	\$2.104

	Units	Cash Settled	Prompt Settle	Cash to Prompt
AGT Citygate	\$/MMBtu	5.00	4.75	-0.25
TETCO M3	\$/MMBtu	4.44	4.08	-0.36
FGT Zone 3	\$/MMBtu	4.42	4.82	0.40
Zone 6 NY	\$/MMBtu	4.42	4.07	-0.35
Chicago Citygate	\$/MMBtu	4.76	4.58	-0.18
Michcon	\$/MMBtu	4.89	4.57	-0.32
Columbia TCO Pool	\$/MMBtu	4.26	4.19	-0.06
Ventura	\$/MMBtu	4.62	4.49	-0.13
Rockies/Opal	\$/MMBtu	4.38	4.25	-0.12
El Paso Permian Basin	\$/MMBtu	4.37	3.55	-0.82
Socal Citygate	\$/MMBtu	4.75	4.33	-0.42
Malin	\$/MMBtu	4.28	4.34	0.06
Houston Ship Channel	\$/MMBtu	4.72	4.56	-0.15
Henry Hub Cash	\$/MMBtu	5.26	4.52	-0.75
AECO Cash	C\$/GJ	4.03	3.68	-0.35
Station2 Cash	C\$/GJ	4.00	4.17	0.17
Dawn Cash	C\$/GJ	4.92	4.62	-0.30

Source: CME, Bloomberg

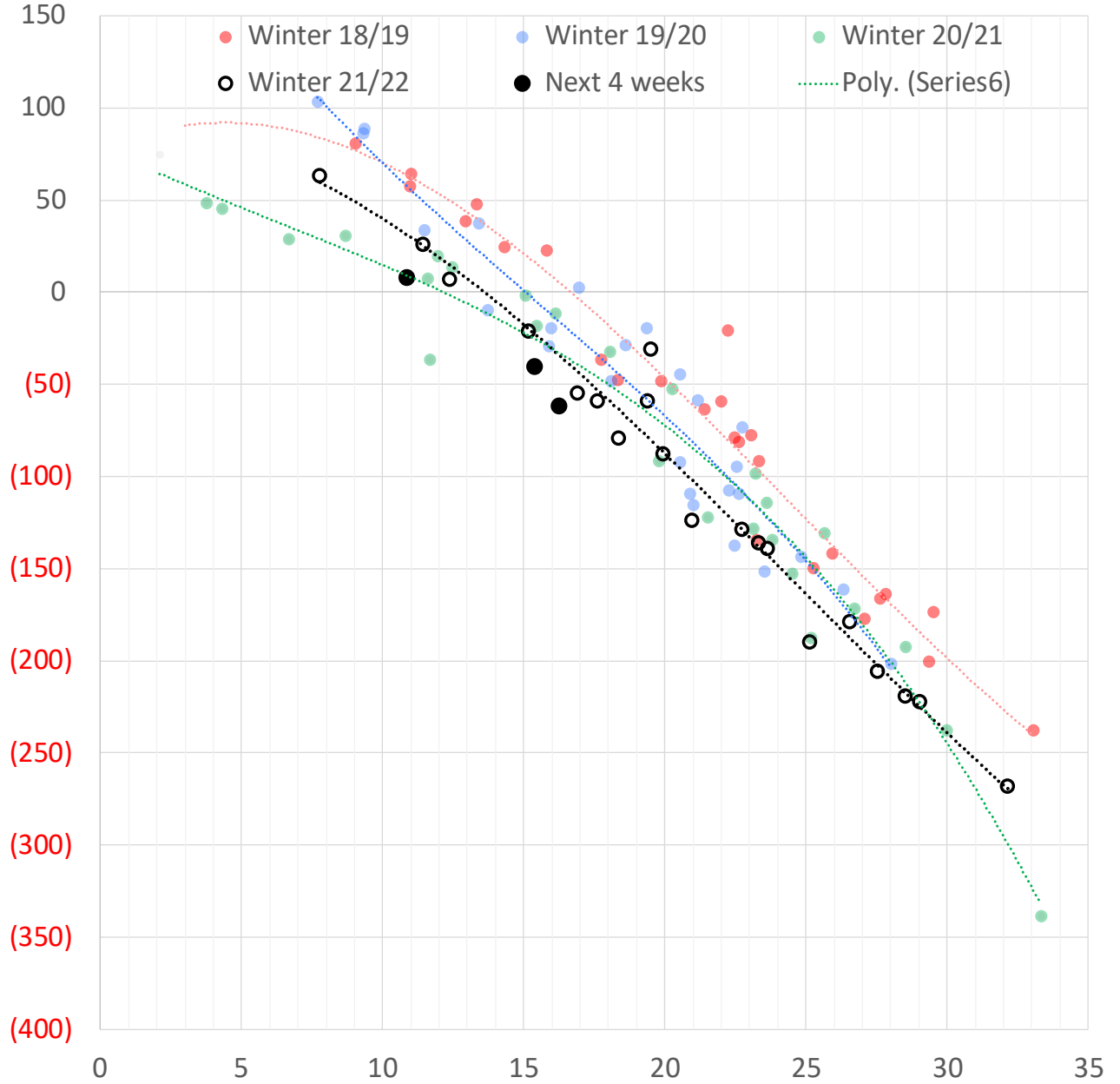
	Units	Current Price	vs. Last Week	vs. 4 Weeks Ago	vs. Last Year
NatGas Jul21/Oct21	\$/MMBtu	2.224	▲ 0.000	▲ 0.000	▲ 2.201
NatGas Oct21/Nov21	\$/MMBtu	0.361	▲ 0.000	▲ 0.000	▲ 0.288
NatGas Oct21/Jan22	\$/MMBtu	-1.817	▲ 0.000	▲ 0.000	▼ -2.116
NatGas Apr22/Oct22	\$/MMBtu	0.130	▼ -0.007	▲ 0.014	▲ 0.083
WTI Crude	\$/Bbl	114.93	▲ 19.890	▲ 22.830	▲ 53.750
Brent Crude	\$/Bbl	121.60	▲ 23.580	▲ 24.760	▲ 57.190
Fuel Oil, NY Harbour 1%	\$/Bbl	97.18	▲ 0.000	▲ 0.000	▲ 0.000
Heating Oil	cents/Gallon	411.48	▲ 101.470	▲ 128.560	▲ 228.920
Propane, Mt. Bel	cents/Gallon	1.45	▲ 0.083	▲ 0.131	▲ 0.527
Ethane, Mt. Bel	cents/Gallon	0.43	▲ 0.011	▲ 0.029	▲ 0.212
Coal, PRB	\$/MTon	12.30	▲ 0.000	▲ 0.000	▲ 0.000
Coal, PRB	\$/MMBtu	0.70			
Coal, ILB	\$/MTon	31.05	▲ 0.000	▲ 0.000	▲ 0.000
Coal, ILB	\$/MMBtu	1.32			

Nat Gas Term Structure (\$MMBTU)



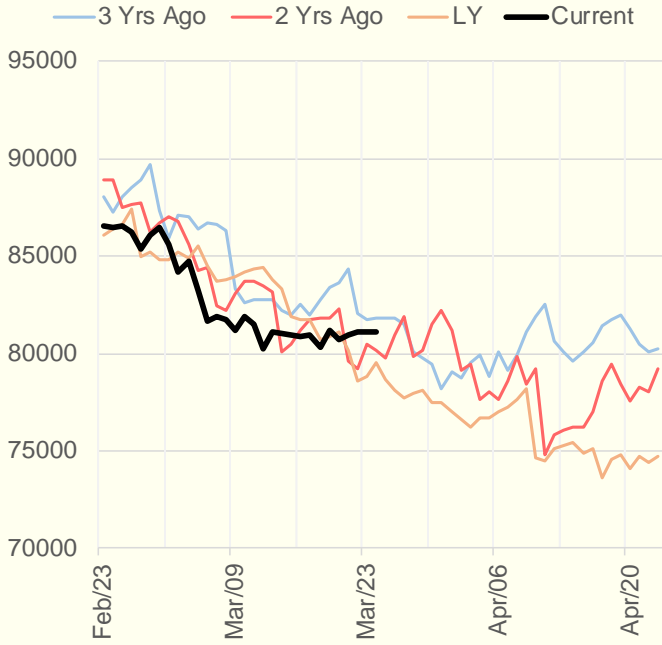
	APR 22	MAY 22	JUN 22	JUL 22	AUG 22	SEP 22	OCT 22	NOV 22	DEC 22	JAN 23	FEB 23	MAR 23
Henry Hub	\$5.222	\$5.277	\$5.319	\$5.371	\$5.373	\$5.353	\$5.367	\$5.448	\$5.560	\$5.685	\$5.499	\$4.917
JKL	\$34.120	\$34.865	\$34.045	\$34.155	\$34.600	\$33.900	\$34.255	\$33.655	\$32.660	\$31.155	\$28.345	\$22.230
JKL-HHub	\$28.898	\$29.588	\$28.726	\$28.784	\$29.227	\$28.547	\$28.888	\$28.207	\$27.100	\$25.470	\$22.846	\$17.313
TTF	\$37.684	\$37.830	\$37.779	\$37.812	\$37.837	\$37.870	\$37.152	\$36.379	\$35.914	\$35.024	\$34.015	\$32.290
TTF-HHub	\$32.462	\$32.553	\$32.460	\$32.441	\$32.464	\$32.517	\$31.785	\$30.931	\$30.354	\$29.339	\$28.516	\$27.373
NBP	\$36.619	\$36.897	\$37.044	\$37.164	\$37.247	\$37.645	\$36.992	\$38.020	\$37.956	\$37.473	\$36.551	\$32.946
NBP-HHub	\$31.397	\$31.620	\$31.725	\$31.793	\$31.874	\$32.292	\$31.625	\$32.572	\$32.396	\$31.788	\$31.052	\$28.029

Weather Storage Model - Next 4 Week Forecast

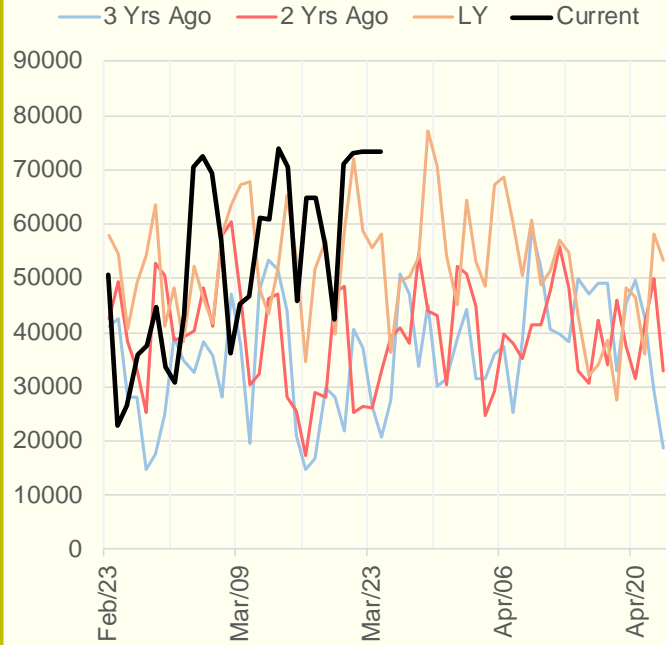


The risk of trading futures and options and other derivatives involves a substantial risk of loss and is not suitable for all persons. Each person must consider whether a particular trade, combination of trades, or strategy is suitable for that person's financial means and objectives. Past results are not necessarily indicative of future results. This communication may contain links to third party websites which are not under the control of and are not maintained by ION Energy Group, and ION Energy Group is not responsible for their content.

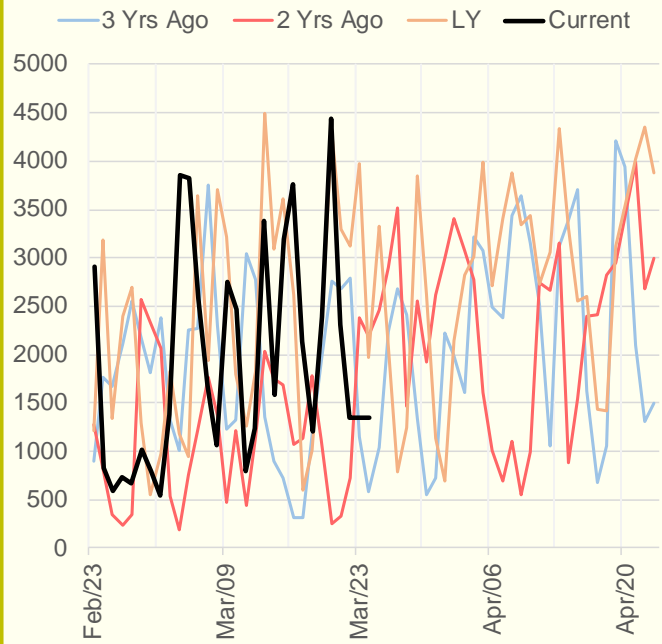
NRC Nuclear Daily Output



US Wind



CALI Wind



TEXAS Wind

