

CFTC COMMITMENT OF TRADERS REPORT

As of 4/12/2022

TRADITIONAL FUNDS net position changes

Wed to Tue, in 000 contracts

	Corn	Bean	Meal	Oil	Chi. Wheat	KC Wheat	Min Wheat
Futures Only	8.5	(0.6)	(7.5)	8.8	3.9	0.2	0.5
Futures & Options Combined	7.6	6.0	(7.8)	7.1	2.6	0.1	0.8

TRADITIONAL COMMERCIAL net position changes

	Corn	Bean	Meal	Oil	Chi. Wheat	KC Wheat	Min Wheat
Futures Only	(19.6)	0.2	5.8	(14.0)	(5.9)	(1.3)	(1.1)
Futures & Options Combined	(18.7)	(7.9)	5.9	(13.1)	(4.8)	(1.5)	(1.3)

MANAGED MONEY net position changes

	Corn	Bean	Meal	Oil	Chi. Wheat	KC Wheat	Min Wheat
Futures Only	7.8	7.8	(6.9)	7.3	3.1	4.3	(0.1)
Futures & Options Combined	7.6	8.2	(7.1)	7.3	2.7	4.4	(0.1)

SWAP DEALERS net position changes

	Corn	Bean	Meal	Oil	Chi. Wheat	KC Wheat	Min Wheat
Futures Only	(3.8)	(4.0)	0.8	(1.6)	(4.9)	0.6	0.3
Futures & Options Combined	(4.8)	(6.2)	0.9	(1.4)	(5.1)	0.5	0.2

PRODUCERS/END USERS net position changes

	Corn	Bean	Meal	Oil	Chi. Wheat	KC Wheat	Min Wheat
Futures Only	(15.7)	4.2	4.9	(12.4)	(1.0)	(2.0)	(1.4)
Futures & Options Combined	(13.8)	(1.7)	5.0	(11.7)	0.3	(2.0)	(1.6)

INDEX net position changes

	Corn	Bean	Meal	Oil	Chi. Wheat	KC Wheat	Min Wheat
Futures & Options Combined	(2.0)	(1.1)	(0.1)	1.0	(2.3)	(1.0)	NA

SUPPLEMENTAL NON-COMMERCIAL net position changes

	Corn	Bean	Meal	Oil	Chi. Wheat	KC Wheat	Min Wheat
Futures & Options Combined	5.1	4.3	(6.7)	5.7	0.7	1.5	NA

OPEN INTEREST net position changes

Wed to Tue, in 000 contracts

	Corn	Bean	Meal	Oil	Chi. Wheat	KC Wheat	Min Wheat
Futures Only	33.6	(4.6)	(1.4)	14.9	(6.3)	(2.2)	4.8
Futures & Options Combined	92.5	5.4	0.4	22.0	6.4	2.2	5.2

Source: CFTC and FI

Wed to Tue, in 000 contracts

**COMMITMENT OF TRADERS
FUTURES ONLY NET POSITIONS
AS OF 04/12/2022
(IN THOUSAND CONTRACTS)**

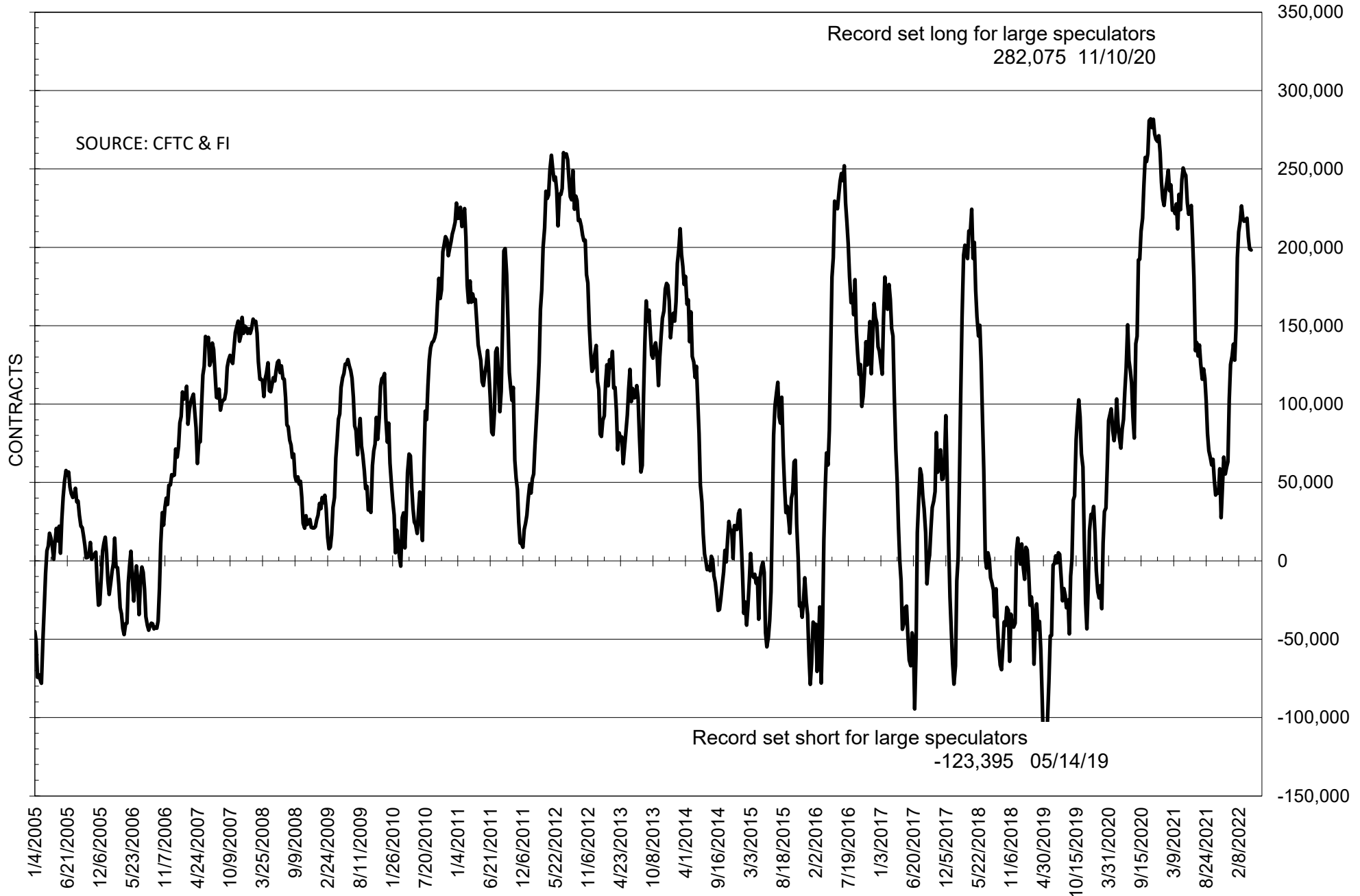
	COMMERCIAL				(FUND) NON COMMERCIAL				(SPEC) NON-REPORTABLE			
	12-Apr	5-Apr	29-Mar	22-Mar	12-Apr	5-Apr	29-Mar	22-Mar	12-Apr	5-Apr	29-Mar	22-Mar
	WHEAT											
Chicago	-21.3	-15.3	-9.4	-7.0	23.9	20.0	13.6	9.5	-2.6	-4.6	-4.1	-2.5
Kansas City	-45.4	-44.0	-45.7	-45.8	43.3	43.1	45.0	46.0	2.1	0.9	0.7	-0.2
Minneapolis	-27.2	-26.1	-25.5	-27.0	23.0	22.5	21.5	21.7	4.2	3.6	4.1	5.3
All Wheat	-93.8	-85.5	-80.6	-79.9	90.2	85.5	80.1	77.2	3.7	-0.1	0.6	2.6
CORN	-443.7	-424.2	-424.7	-470.7	495.6	487.1	482.1	519.4	-51.9	-62.9	-57.4	-48.6
OATS	#VALUE!	#VALUE!	#VALUE!	#VALUE!	#VALUE!	#####	#VALUE!	#VALUE!	#VALUE!	#VALUE!	#VALUE!	#VALUE!
SOYBEANS	-170.7	-170.9	-178.8	-193.6	198.3	198.9	206.5	218.6	-27.6	-28.0	-27.7	-25.0
SOY OIL	-119.1	-105.2	-102.9	-111.5	98.3	89.5	87.3	92.6	20.8	15.7	15.6	18.9
SOY MEAL	-148.2	-154.0	-150.7	-157.1	116.3	123.8	121.8	128.8	32.0	30.2	28.9	28.3

Oats positions thin to be reported

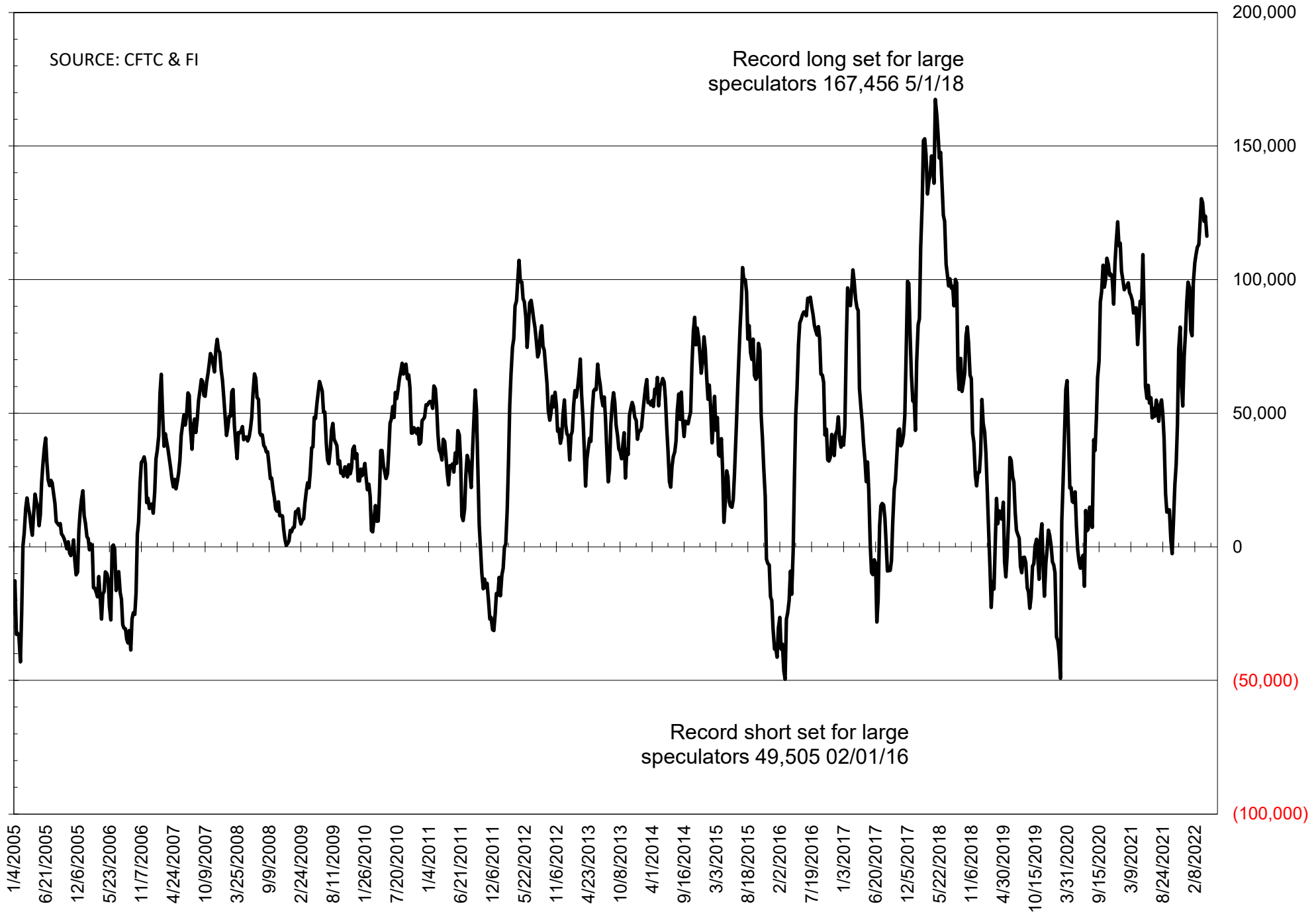
	TOTAL OPEN INTEREST				NEARBY FUTURES PRICE					12-Apr-22 LAST REPORTED % HELD BY TRADERS			
	12-Apr	5-Apr	29-Mar	22-Mar	K Latest	K 12-Apr	K 5-Apr	K 29-Mar	K 22-Mar	LARGE FUND		SMALL	
										LONG	SHORT	LONG	SHORT
WHEAT													
Chicago	338271	344615	341224	345345	1096.50	1103.75	1045.25	1014.25	1118.25	0%	28%	0%	10%
Kansas City	175900	178149	178444	178217	1154.00	1162.25	1082.75	1024.50	1116.50	0%	11%	0%	11%
Minneapolis	72508	67661	65531	65049	1127.75	1153.25	1108.75	1043.25	1095.75	0%	3%	0%	14%
CORN	1589848	1556206	1515106	1526201	790.25	776.25	759.75	726.25	753.00	0%	5%	0%	13%
OATS	#VALUE!	#VALUE!	#VALUE!	#VALUE!	757.00	807.00	745.25	719.00	724.00	0%	#VALUE!	0%	#VALUE!
SOYBEANS	752157	756785	755139	754382	1682.25	1670.25	1631.00	1643.00	1696.50	33%	7%	7%	11%
SOY OIL	364457	349547	340690	347240	78.91	75.43	72.41	71.66	74.54	0%	4%	0%	5%
SOY MEAL	397955	399314	396516	392169	461.40	460.90	465.90	466.00	476.80	0%	4%	0%	5%

SOURCE: CFTC & FI

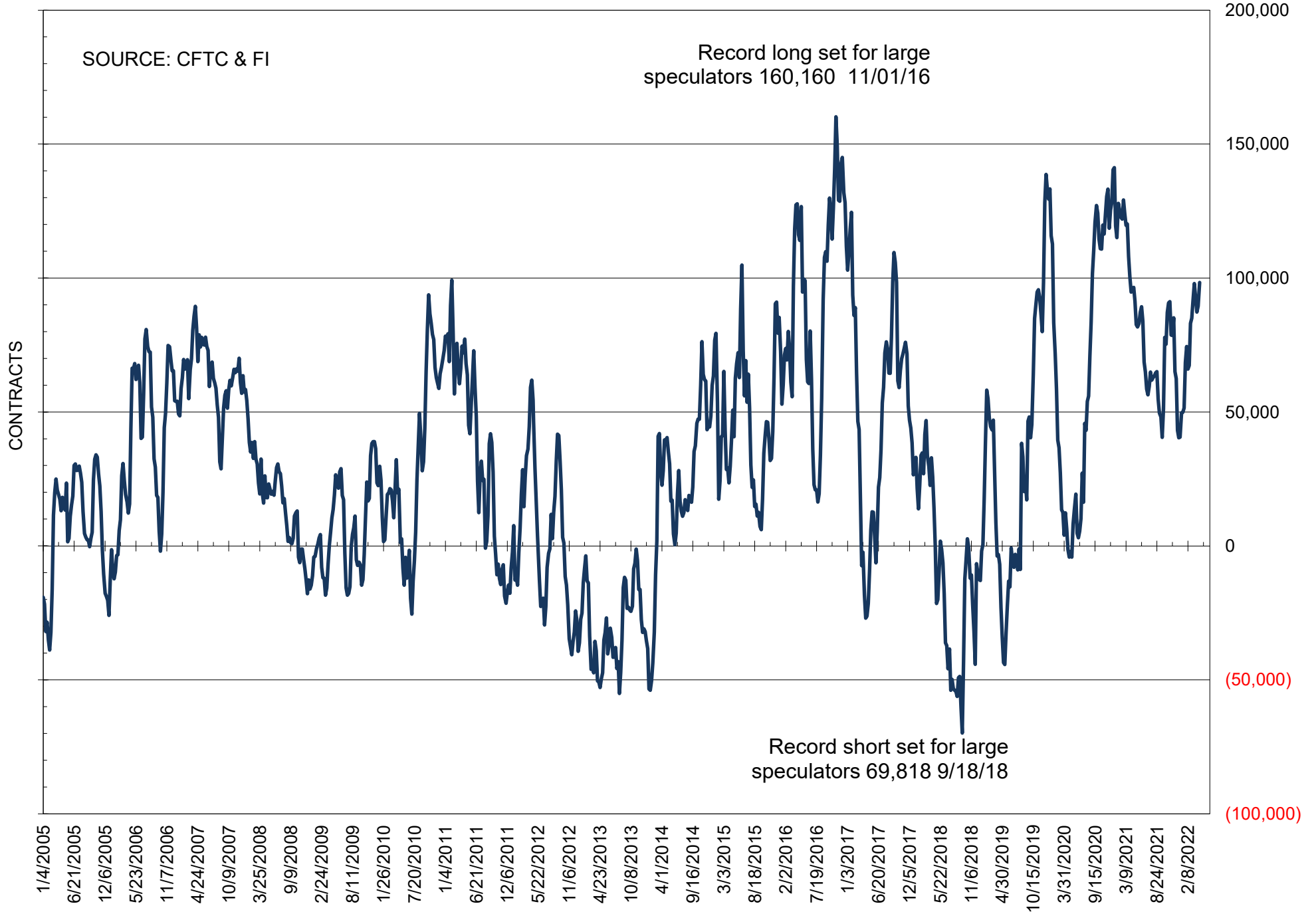
NET POSITION OF FUTURES ONLY LARGE SPECS IN SOYBEANS



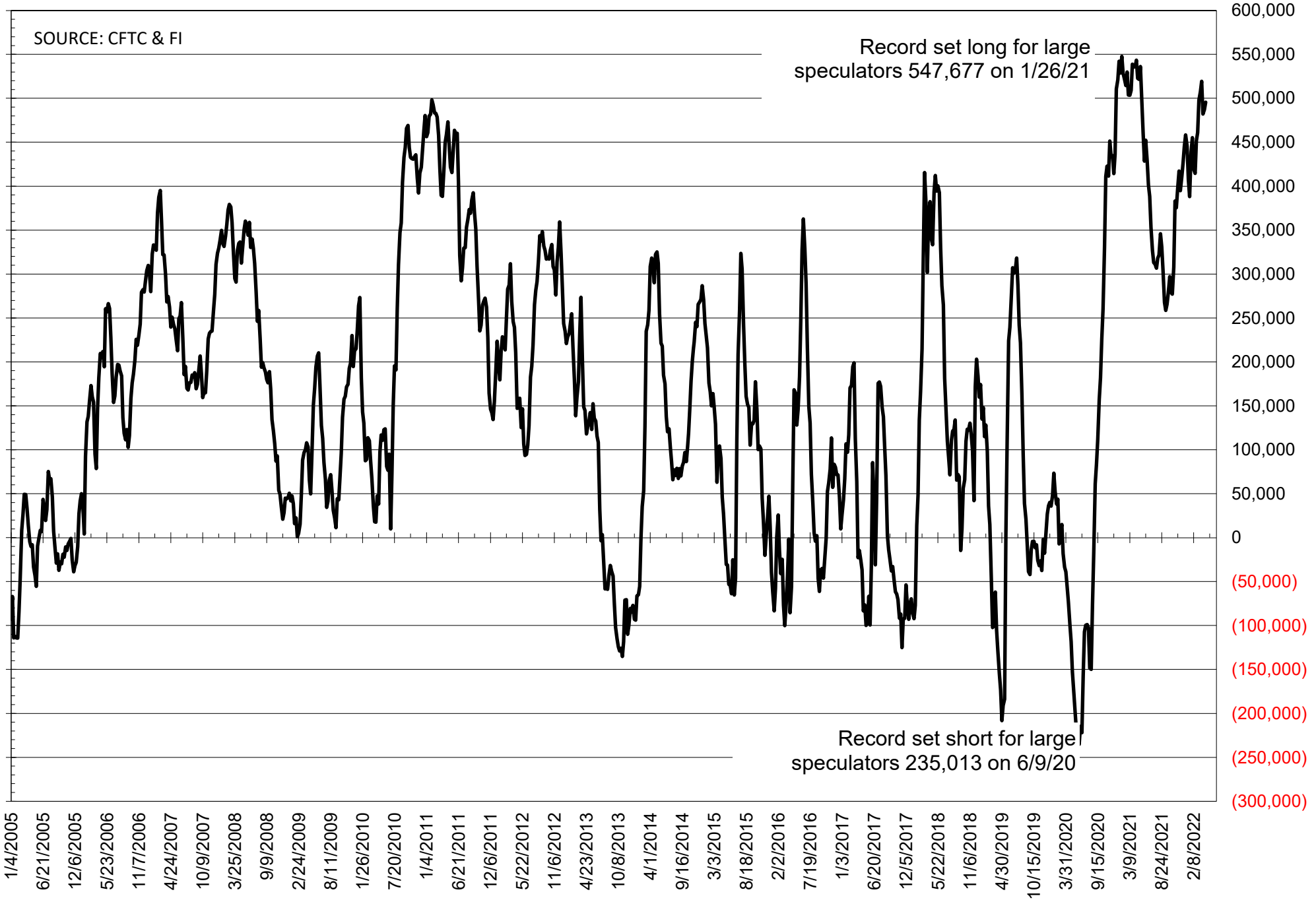
NET POSITION OF FUTURES ONLY LARGE SPECS IN SOYMEAL



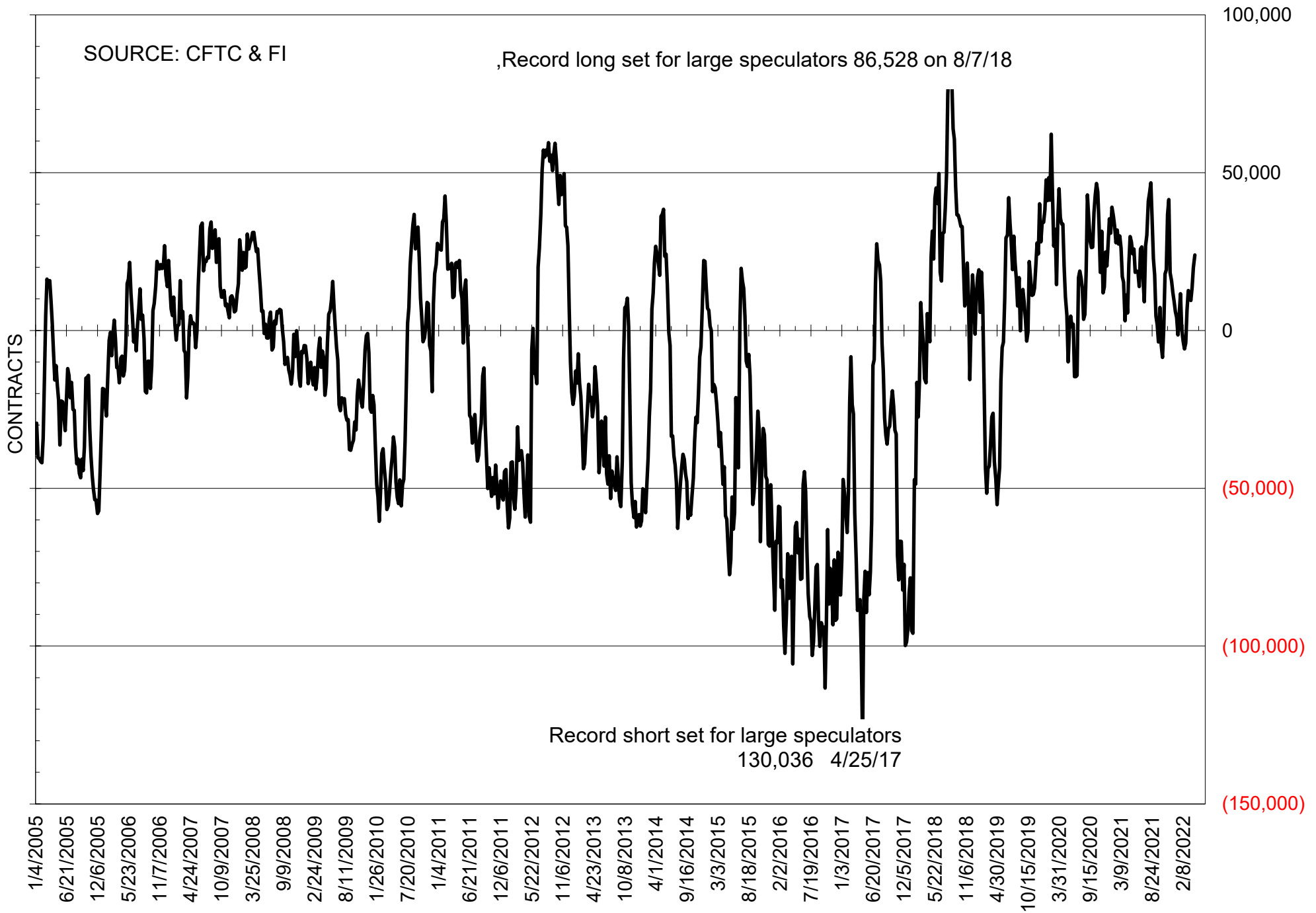
NET POSITION OF FUTURES ONLY LARGE SPECS IN SOYOIL



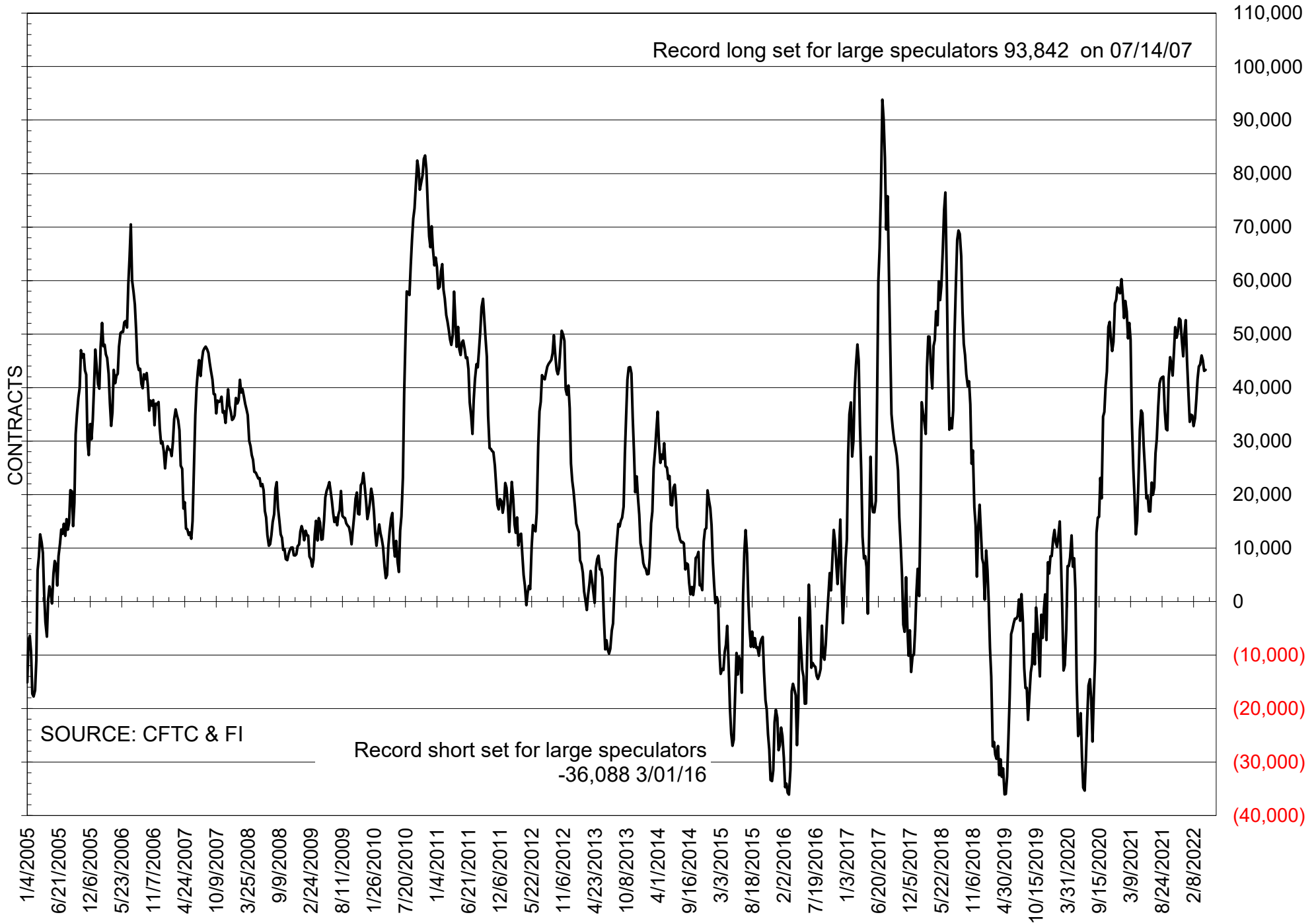
NET POSITION OF LARGE SPECULATORS IN CORN



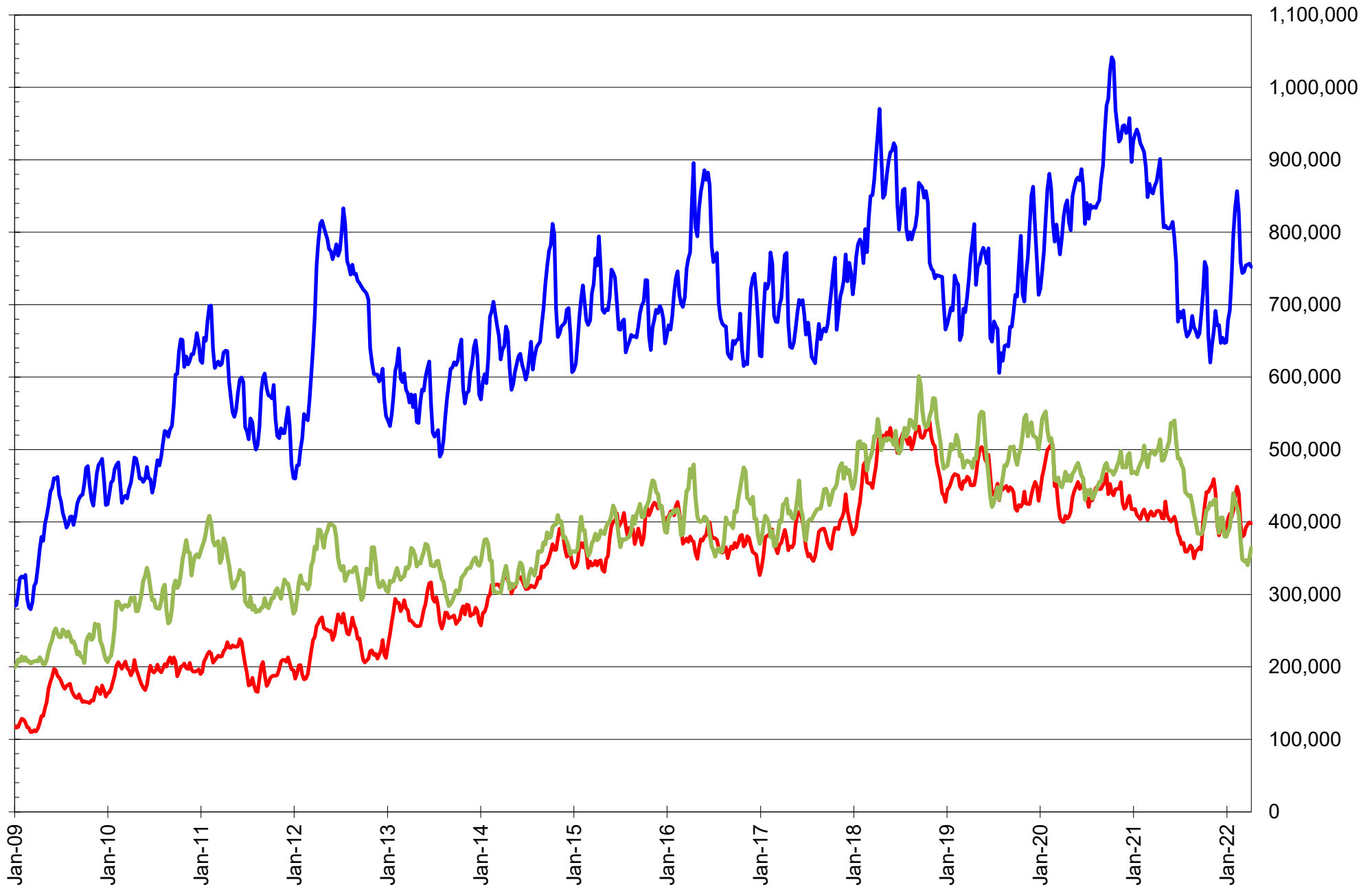
NET POSITION OF FUTURES ONLY LARGE SPECS IN CHICAGO WHEAT



NET POSITION OF LARGE SPECULATORS IN KANSAS CITY WHEAT



TOTAL OPEN INTEREST IN SOYBEANS, MEAL AND OIL, FUTURES ONLY



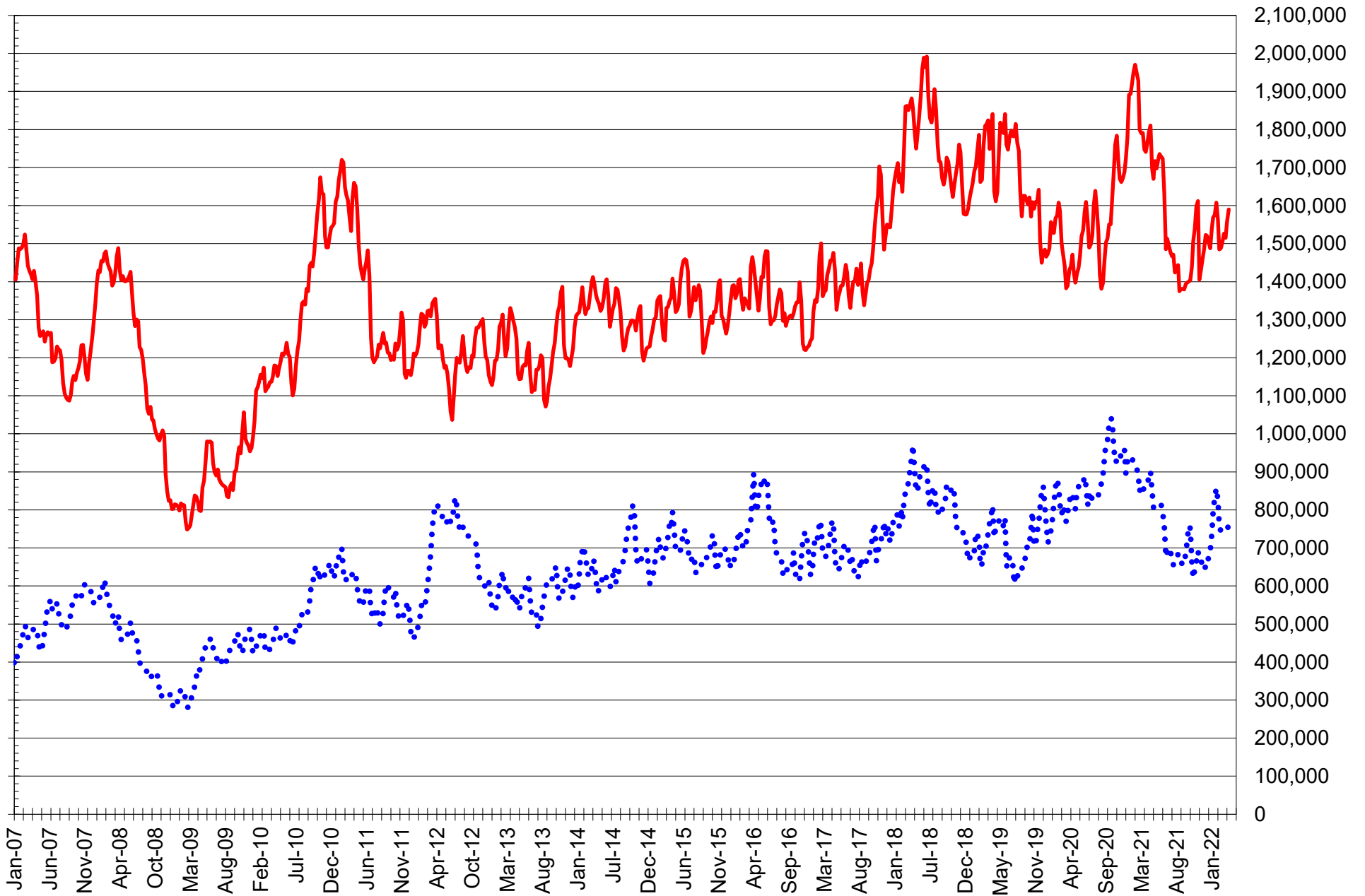
SOURCE: CFTC & FI

— SOYBEANS

— SOYBEAN MEAL

— SOYBEAN OIL

TOTAL OPEN INTEREST IN CORN AND SOYBEANS, FUTURES ONLY



SOURCE: CFTC & FI

— CORN

..... SOYBEANS

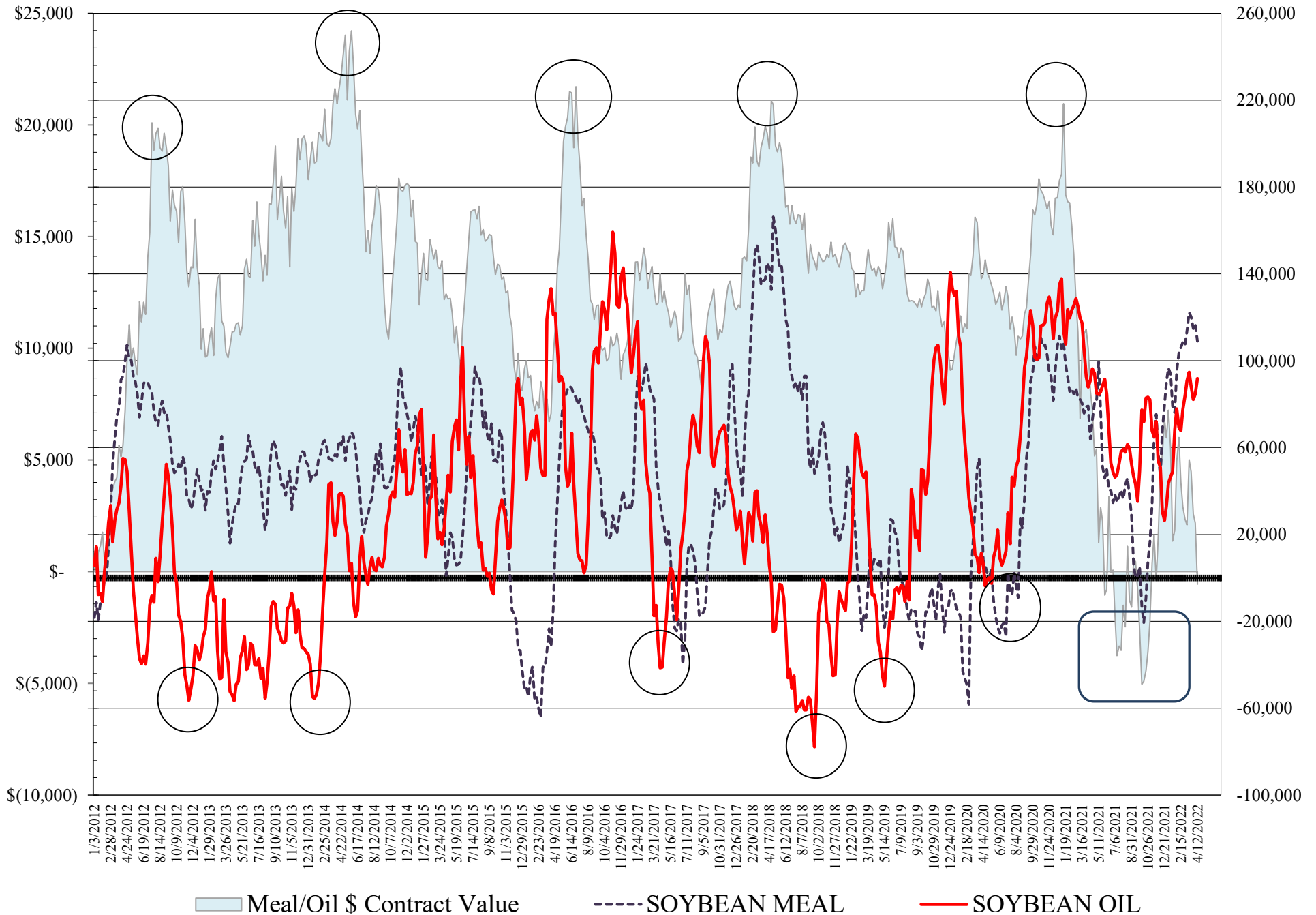
COMMITMENT OF TRADERS
FUTURES & OPTIONS NET POSITIONS
AS OF 04/12/2022
(IN THOUSAND CONTRACTS)

	COMMERCIAL				(FUND) NON COMMERCIAL				(SPEC) NON-REPORTABLE			
	12-Apr	5-Apr	29-Mar	22-Mar	12-Apr	5-Apr	29-Mar	22-Mar	12-Apr	5-Apr	29-Mar	22-Mar
	WHEAT											
Chicago	-26.7	-21.8	-15.6	-16.3	29.2	26.6	20.0	19.4	-2.5	-4.8	-4.4	-3.1
Kansas City	-46.9	-45.4	-47.4	-47.9	44.7	44.5	47.2	48.5	2.2	0.8	0.2	-0.6
Minneapolis	-26.9	-25.5	-24.8	-26.4	22.7	21.9	20.7	21.1	4.2	3.6	4.1	5.3
All Wheat	-100.4	-92.8	-87.7	-90.6	96.5	93.1	87.8	89.0	3.9	-0.3	-0.1	1.6
CORN	-428.6	-410.0	-404.0	-454.8	465.2	457.6	449.1	491.1	-36.6	-47.7	-45.2	-36.4
OATS	#VALUE!	#VALUE!	#VALUE!	#VALUE!	#VALUE!	#VALUE!	#VALUE!	#VALUE!	#VALUE!	#VALUE!	#VALUE!	#VALUE!
SOYBEANS	-158.9	-151.0	-151.5	-173.5	186.0	180.0	181.1	200.0	-27.2	-29.1	-29.6	-26.6
SOY OIL	-113.1	-100.0	-97.3	-106.3	91.8	84.7	82.2	88.1	21.3	15.3	15.2	18.1
SOY MEAL	-144.6	-150.6	-147.3	-152.4	108.9	116.8	114.8	120.3	35.7	33.8	32.4	32.2

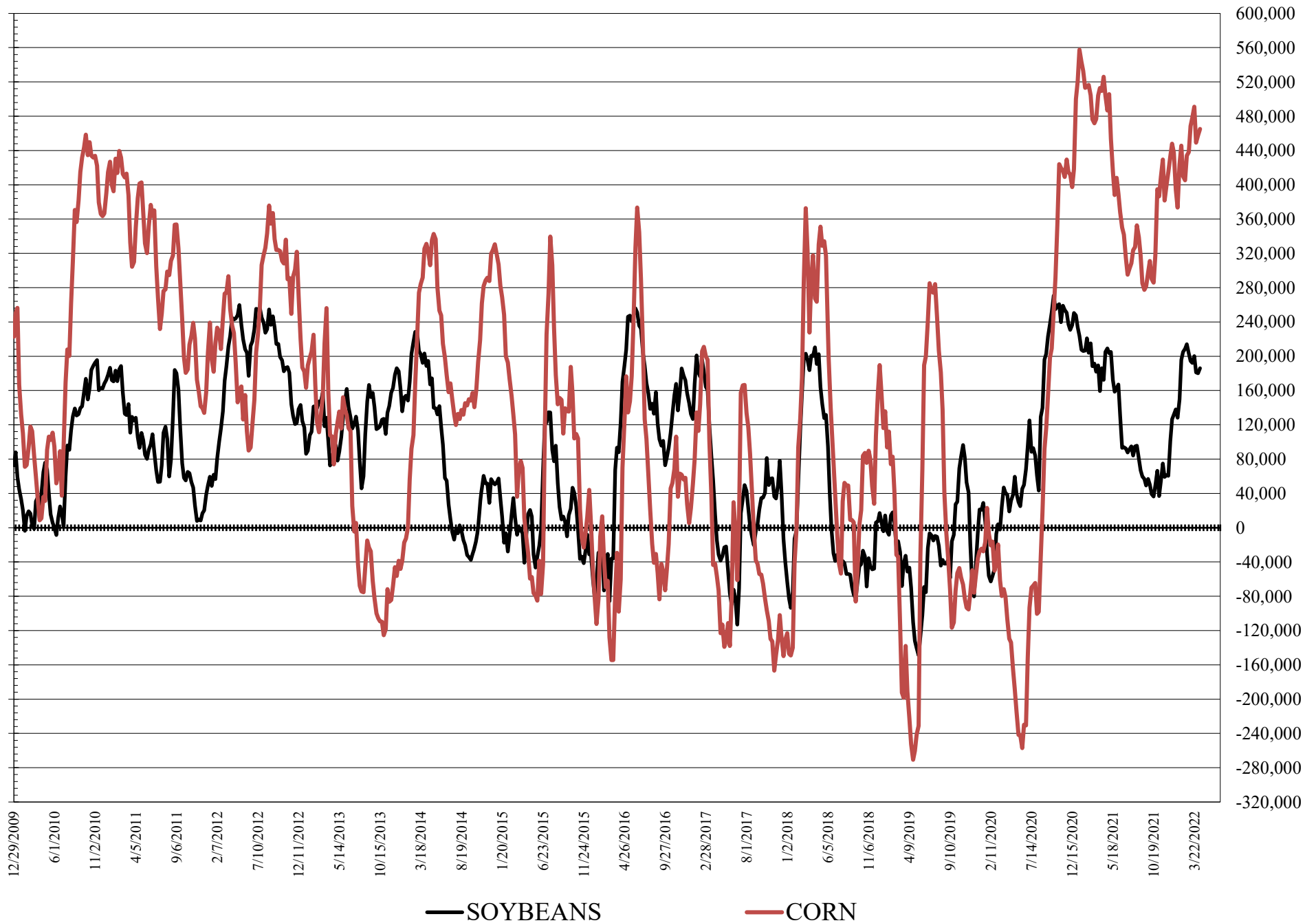
	TOTAL OPEN INTEREST				COMMERCIALS		% HELD BY TRADERS LARGE (FUNDS)		SMALL (NON-REP)	
	12-Apr	5-Apr	29-Mar	22-Mar	LONG	SHORT	LONG	SHORT	LONG	SHORT
	WHEAT									
Chicago	486,821	480,453	471,606	518,617	32%	37%	25%	19%	7%	8%
Kansas City	210,439	208,282	204,327	208,907	35%	57%	30%	8%	12%	11%
Minneapolis	76,329	71,117	68,710	68,469	43%	78%	32%	3%	20%	14%
CORN	2,263,395	2,170,866	2,062,031	2,149,285	39%	58%	23%	3%	10%	12%
OATS	#VALUE!	#VALUE!	#VALUE!	#VALUE!						
SOYBEANS	984,410	979,037	982,306	1,016,326	42%	58%	23%	4%	7%	9%
SOY OIL	432,997	410,957	400,221	415,464	45%	71%	25%	4%	10%	5%
SOY MEAL	461,136	460,780	455,338	457,776	41%	72%	27%	3%	13%	5%

SOURCE: CFTC & FI

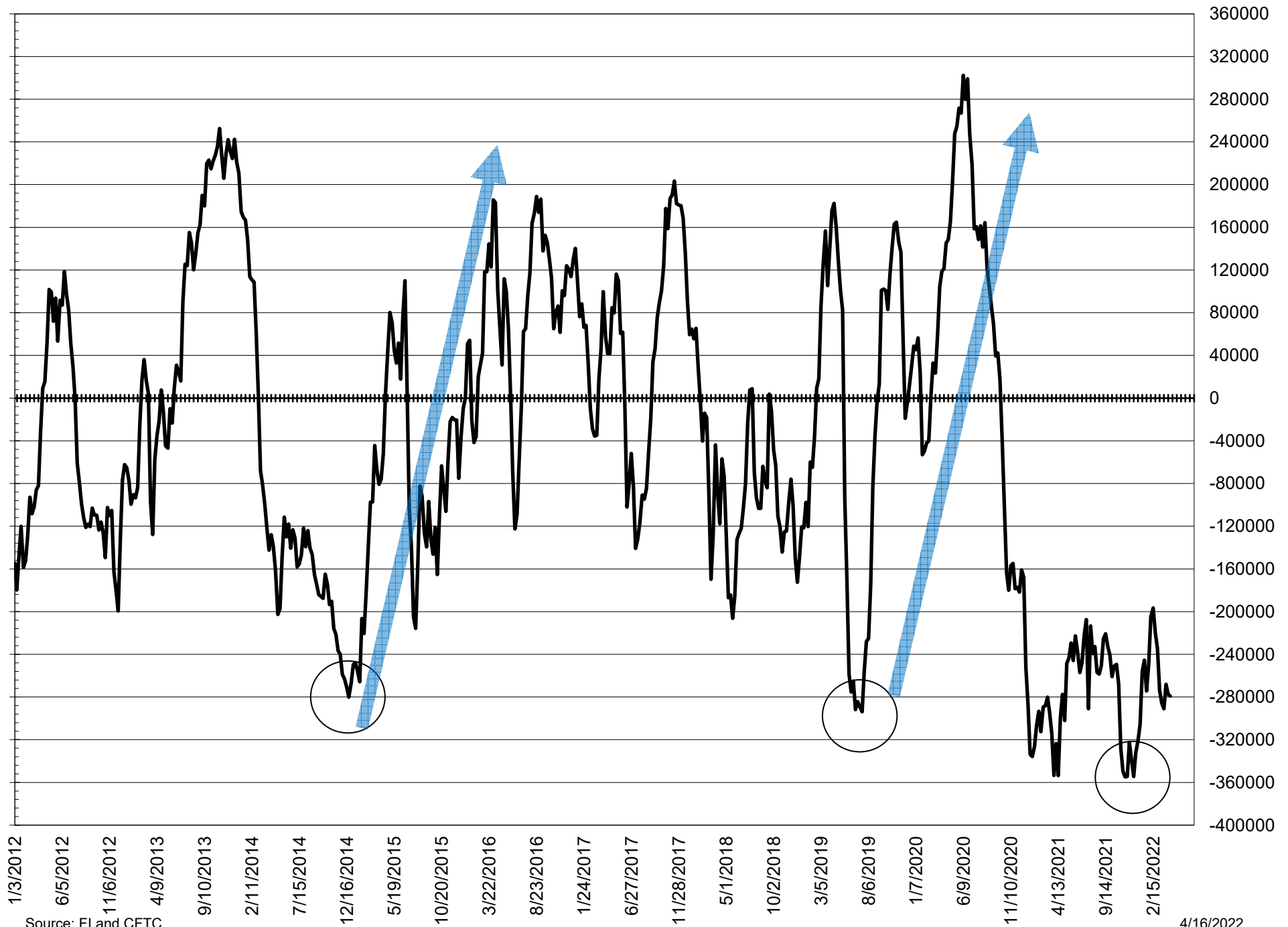
NET POSITION FUTURES AND OPTIONS OF LARGE SPECULATORS IN SOYBEAN MEAL AND SOYBEAN OIL



NET POSITION FUTURES AND OPTIONS OF LARGE SPECULATORS IN SOYBEANS AND CORN



NET POSITION FUTURES AND OPTIONS SPREAD OF LARGE SPECULATORS IN SOYBEANS MINUS CORN



Source: FI and CFTC

4/16/2022

**DISAGGREGATED COMMITMENT OF TRADERS
FUTURES ONLY NET POSITIONS
AS OF 04/12/2022
(IN THOUSAND CONTRACTS)**

	PRODUCER / MERCHANT / PROCESSOR / USER				(INDEX/ETF) SWAP DEALERS				(CTA/CPO/OTHER UNREGISTERED) MANAGED MONEY			
	12-Apr	5-Apr	29-Mar	22-Mar	12-Apr	5-Apr	29-Mar	22-Mar	12-Apr	5-Apr	29-Mar	22-Mar
	WHEAT											
Chicago	(92.7)	(91.7)	(89.7)	(89.9)	71.5	76.4	80.2	82.9	17.1	14.0	19.6	22.7
Kansas City	(69.1)	(67.1)	(68.2)	(69.3)	23.7	23.1	22.5	23.5	49.5	45.2	45.0	45.3
Minneapolis	(27.7)	(26.4)	(25.8)	(27.5)	0.5	0.3	0.3	0.5	18.1	18.3	14.0	14.2
All Wheat	(189.6)	(185.2)	(183.7)	(186.7)	95.7	99.7	103.0	106.8	84.7	77.4	78.6	82.2
CORN	(745.4)	(729.6)	(726.6)	(768.0)	301.6	305.5	301.9	297.3	356.9	349.1	341.6	371.9
OATS	-	-	-	-	-	-	-	-	-	-	-	-
SOYBEANS	(291.6)	(295.9)	(308.6)	(326.4)	120.9	125.0	129.9	132.7	164.6	156.8	151.0	164.2
SOY OIL	(205.9)	(193.5)	(193.0)	(201.1)	86.8	88.3	90.2	89.6	84.5	77.2	79.7	84.4
SOY MEAL	(239.6)	(244.6)	(244.4)	(252.1)	91.4	90.6	93.7	95.0	93.0	99.9	99.6	100.6

	Managed % of OI			
Chicago W	5%	4%	6%	7%
Corn	22%	22%	23%	24%

	TOTAL OPEN INTEREST				OTHER REPORTABLE				NON REPORTABLE			
	12-Apr	5-Apr	29-Mar	22-Mar	12-Apr	5-Apr	29-Mar	22-Mar	12-Apr	5-Apr	29-Mar	22-Mar
	WHEAT											
Chicago	338,271	344,615	341,224	345,345	6.8	6.0	(6.1)	(13.2)	(2.6)	(4.6)	(4.1)	(2.5)
Kansas City	175,900	178,149	178,444	178,217	(6.2)	(2.1)	0.1	0.7	2.1	0.9	0.7	(0.2)
Minneapolis	72,508	67,661	65,531	65,049	4.9	4.2	7.5	7.5	4.2	3.6	4.1	5.3
All Wheat	586,679	590,425	585,199	588,611	5.5	8.1	1.4	(5.0)	3.7	(0.1)	0.6	2.6
CORN	1,589,848	1,556,206	1,515,106	1,526,201	138.7	138.0	140.5	147.4	(51.9)	(62.9)	(57.4)	(48.6)
OATS	-	-	-	-	-	-	-	-	-	-	-	-
SOYBEANS	752,157	756,785	755,139	754,382	33.6	42.1	55.4	54.4	(27.6)	(28.0)	(27.7)	(25.0)
SOY OIL	364,457	349,547	340,690	347,240	13.8	12.3	7.6	8.1	20.8	15.7	15.6	18.9
SOY MEAL	397,955	399,314	396,516	392,169	23.3	23.9	22.1	28.2	32.0	30.2	28.9	28.3

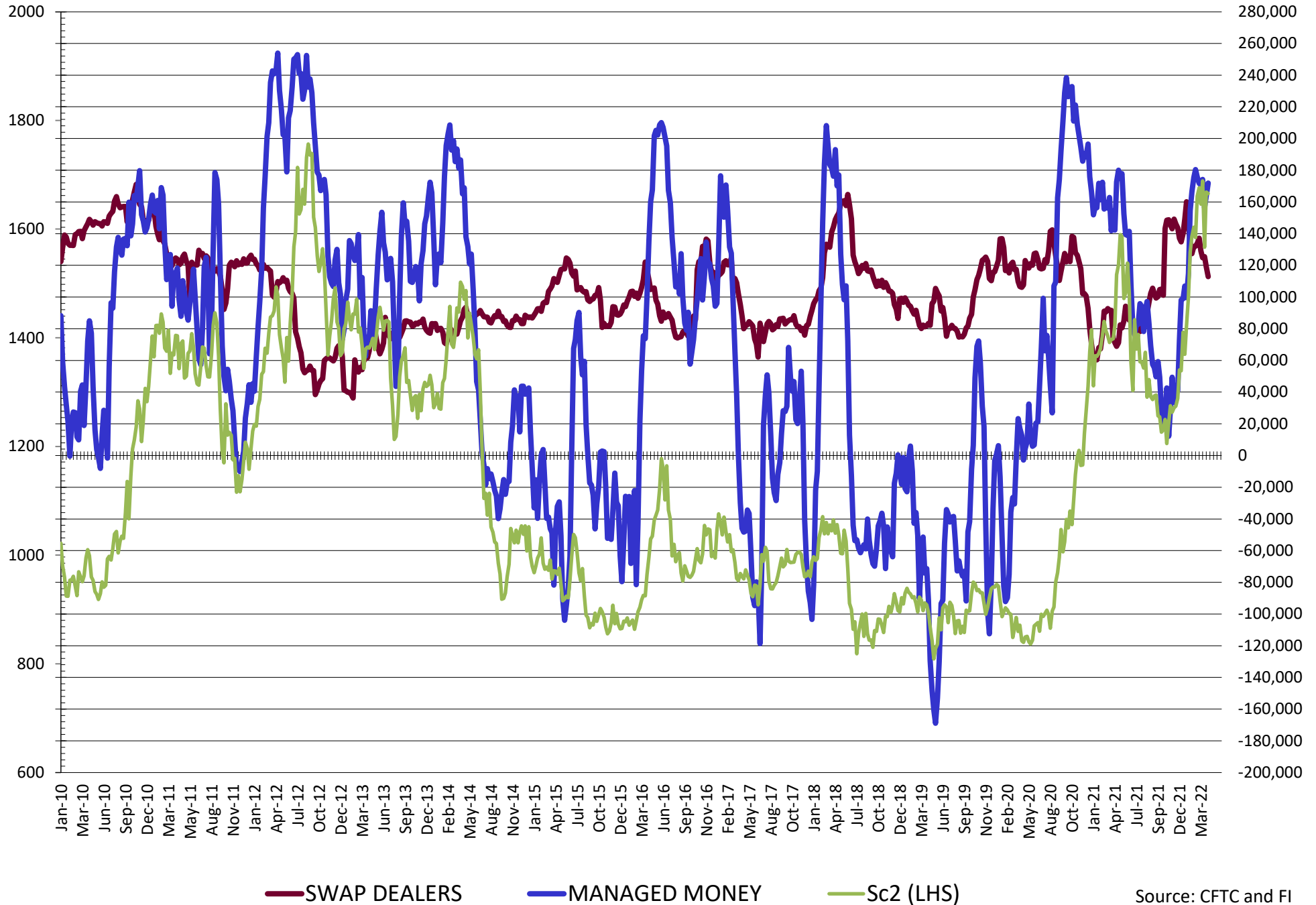
SOURCE: CFTC & FI

**DISAGGREGATED COMMITMENT OF TRADERS
FUTURES & OPTIONS NET POSITIONS
AS OF 04/12/2022
(IN THOUSAND CONTRACTS)**

	PRODUCER / MERCHANT / PROCESSOR / USER				(INDEX/ETF) SWAP DEALERS				(CTA/CPO/OTHER UNREGISTERED) MANAGED MONEY			
	12-Apr	5-Apr	29-Mar	22-Mar	12-Apr	5-Apr	29-Mar	22-Mar	12-Apr	5-Apr	29-Mar	22-Mar
	WHEAT											
Chicago	(95.4)	(95.6)	(93.5)	(95.4)	68.7	73.8	78.0	79.1	16.6	14.0	19.4	19.5
Kansas City	(70.8)	(68.9)	(69.7)	(71.0)	24.0	23.5	22.3	23.1	49.4	45.0	45.3	45.8
Minneapolis	(27.5)	(25.9)	(25.2)	(27.0)	0.6	0.4	0.4	0.6	18.1	18.3	14.0	14.2
All Wheat	(193.7)	(190.4)	(188.4)	(193.5)	93.3	97.7	100.7	102.8	84.2	77.2	78.8	79.5
CORN	(714.7)	(700.9)	(694.3)	(737.1)	286.1	290.9	290.3	282.3	370.0	362.3	354.6	384.1
OATS	0.0	0.0	0.0	0.0	0.0	0.0	0.0	0.0	0.0	0.0	0.0	0.0
SOYBEANS	(271.7)	(270.0)	(276.9)	(298.3)	112.9	119.0	125.4	124.8	171.9	163.7	156.3	174.2
SOY OIL	(198.6)	(186.9)	(186.1)	(194.5)	85.6	87.0	88.8	88.2	84.1	76.8	78.6	84.1
SOY MEAL	(235.0)	(240.0)	(239.5)	(245.3)	90.3	89.4	92.3	92.8	93.4	100.5	99.9	101.2
	TOTAL				OTHER REPORTABLE				NON REPORTABLE			
	OPEN INTEREST				NON REPORTABLE				NON REPORTABLE			
	12-Apr	5-Apr	29-Mar	22-Mar	12-Apr	5-Apr	29-Mar	22-Mar	12-Apr	5-Apr	29-Mar	22-Mar
WHEAT												
Chicago	486,821	480,453	471,606	518,617	12.6	12.6	0.6	(0.1)	(2.5)	(4.8)	(4.4)	(3.1)
Kansas City	210,439	208,282	204,327	208,907	(4.7)	(0.5)	1.9	2.7	2.2	0.8	0.2	(0.6)
Minneapolis	76,329	71,117	68,710	68,469	4.6	3.7	6.6	6.9	4.2	3.6	4.1	5.3
All Wheat	773,589	759,852	744,643	795,993	12.4	15.8	9.1	9.5	3.9	(0.3)	(0.1)	1.6
CORN	2,263,395	2,170,866	2,062,031	2,149,285	95.3	95.3	94.5	107.0	(36.6)	(47.7)	(47.7)	(47.7)
OATS	0	0	0	0	0.0	0.0	0.0	0.0	0.0	0.0	0.0	0.0
SOYBEANS	984,410	979,037	982,306	1,016,326	14.2	16.4	24.8	25.8	(27.2)	(29.1)	(29.6)	(26.6)
SOY OIL	432,997	410,957	400,221	415,464	7.7	7.9	3.6	4.1	21.3	15.3	15.2	18.1
SOY MEAL	461,136	460,780	455,338	457,776	15.5	16.2	14.9	19.1	35.7	33.8	32.4	32.2

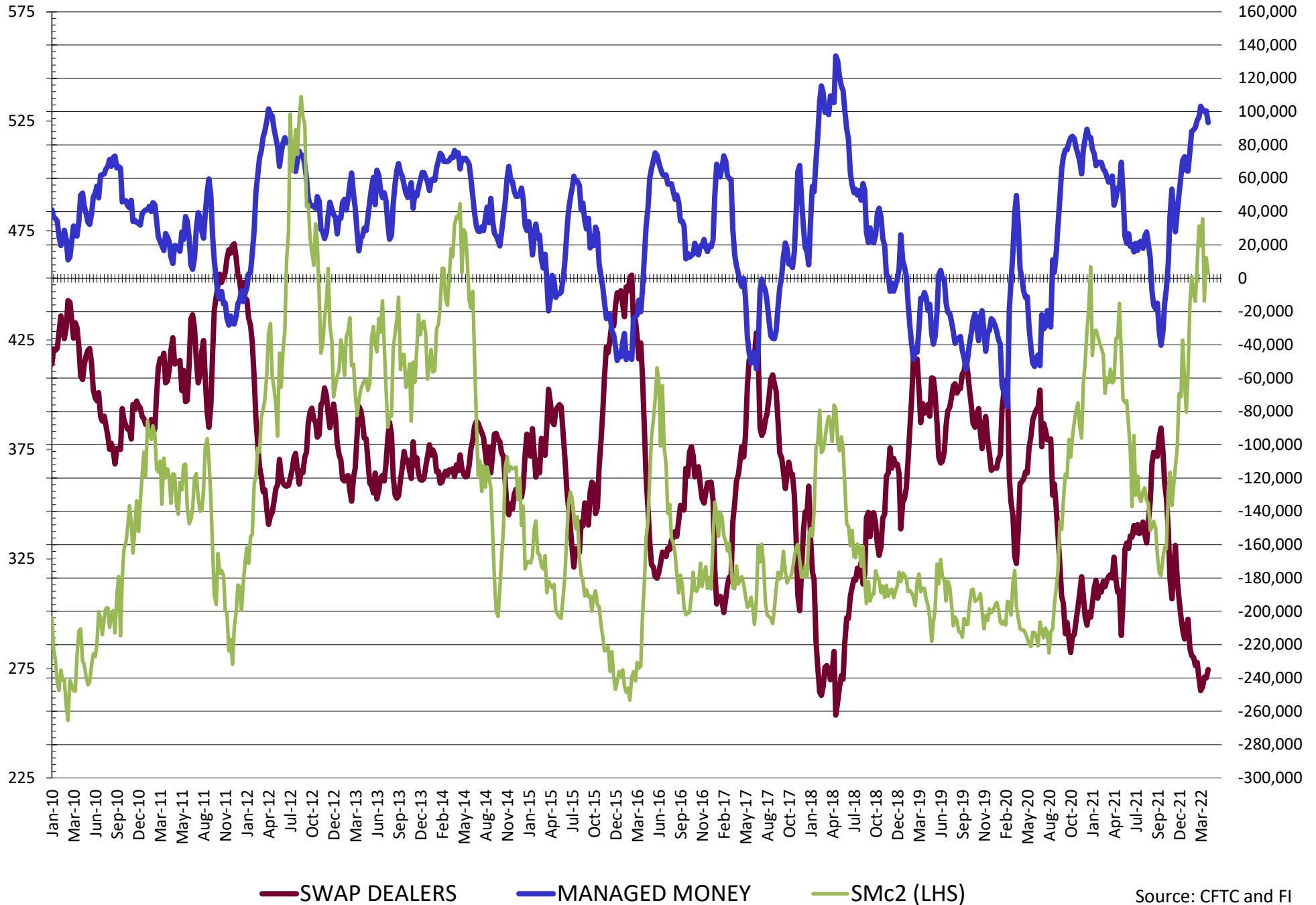
SOURCE: CFTC & FI

NET POSITION FUTURES AND OPTIONS OF SWAP AND MANAGED FUNDS IN SOYBEANS



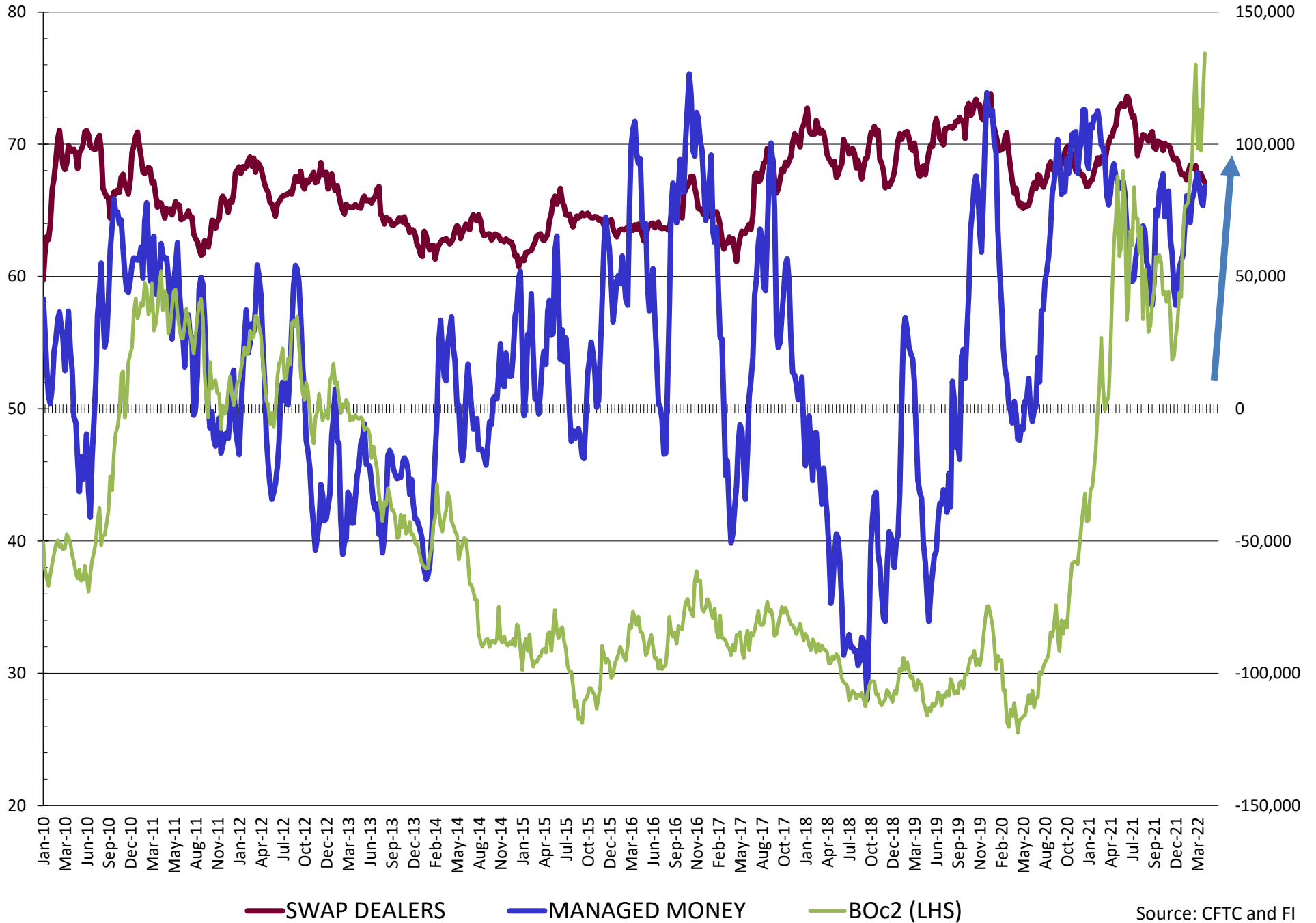
Source: CFTC and FI
4/16/2022

NET POSITION FUTURES AND OPTIONS OF SWAP AND MANAGED FUNDS IN SOYBEAN MEAL

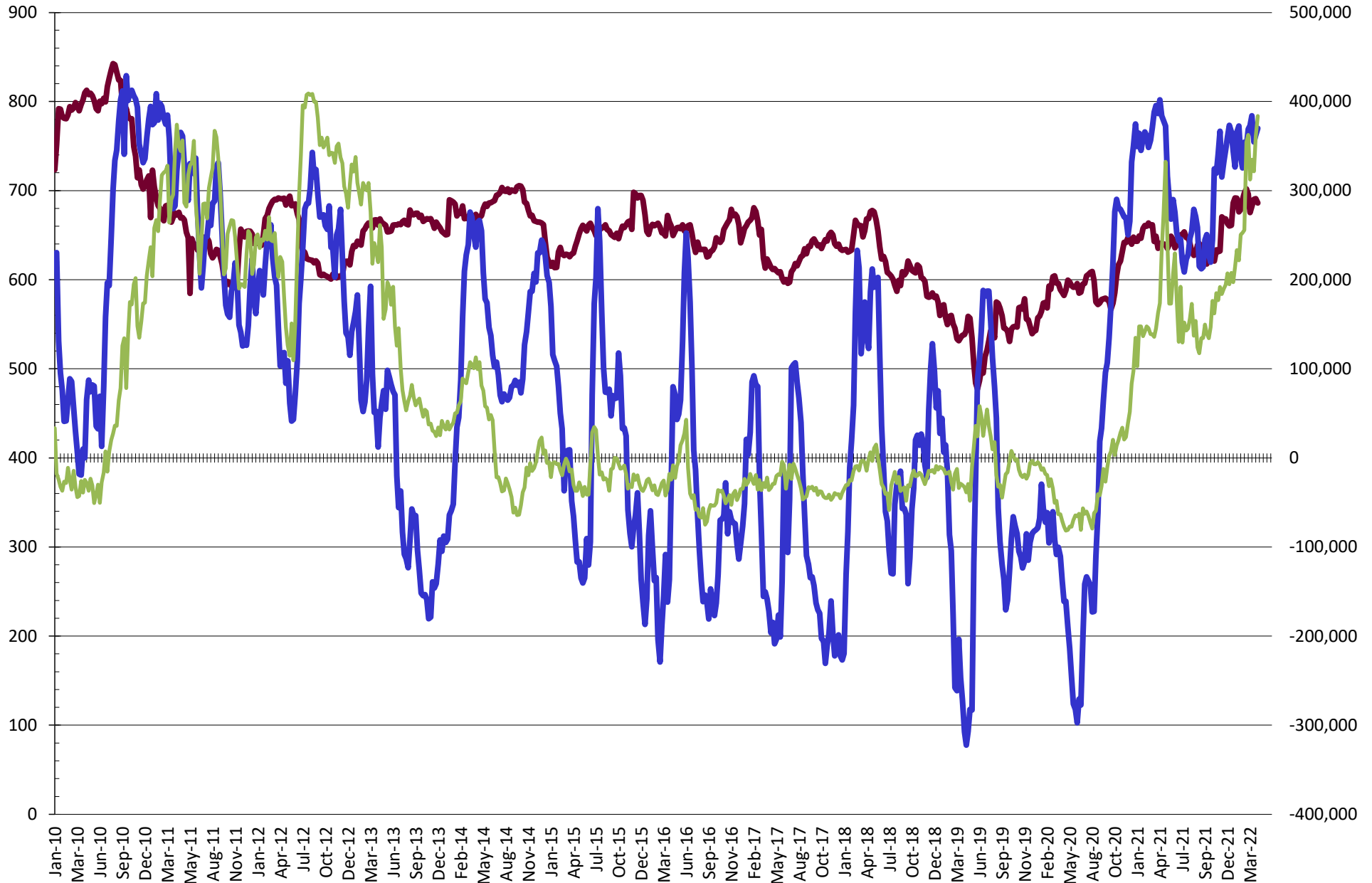


Source: CFTC and FI
4/16/2022

NET POSITION FUTURES AND OPTIONS OF SWAP AND MANAGED FUNDS IN SOYBEAN OIL

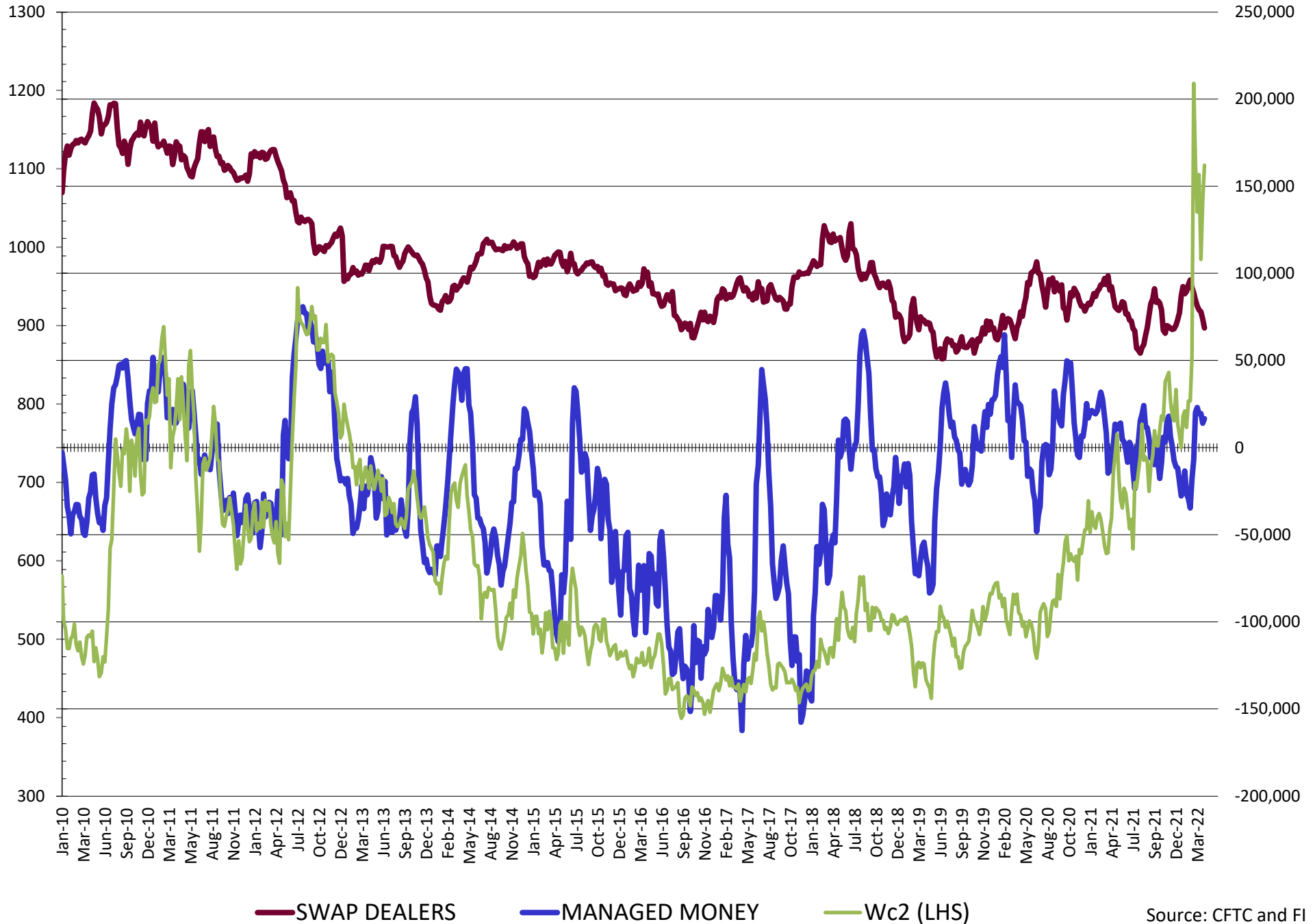


NET POSITION FUTURES AND OPTIONS OF SWAP AND MANAGED FUNDS IN CORN

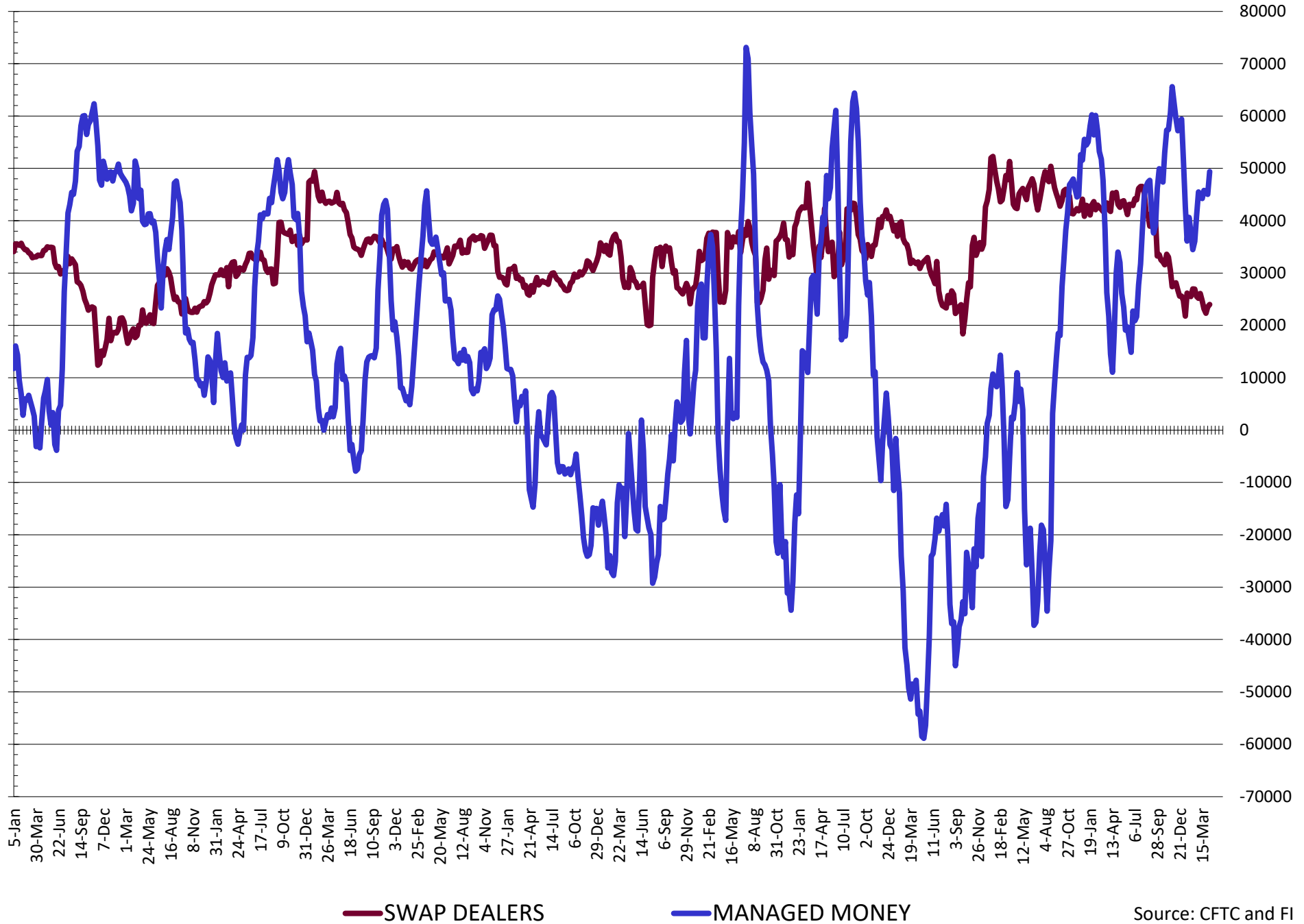


— SWAP DEALERS
 — MANAGED MONEY
 — Cc2 (LHS)

NET POSITION FUTURES AND OPTIONS OF SWAP AND MANAGED FUNDS IN CHICAGO WHEAT

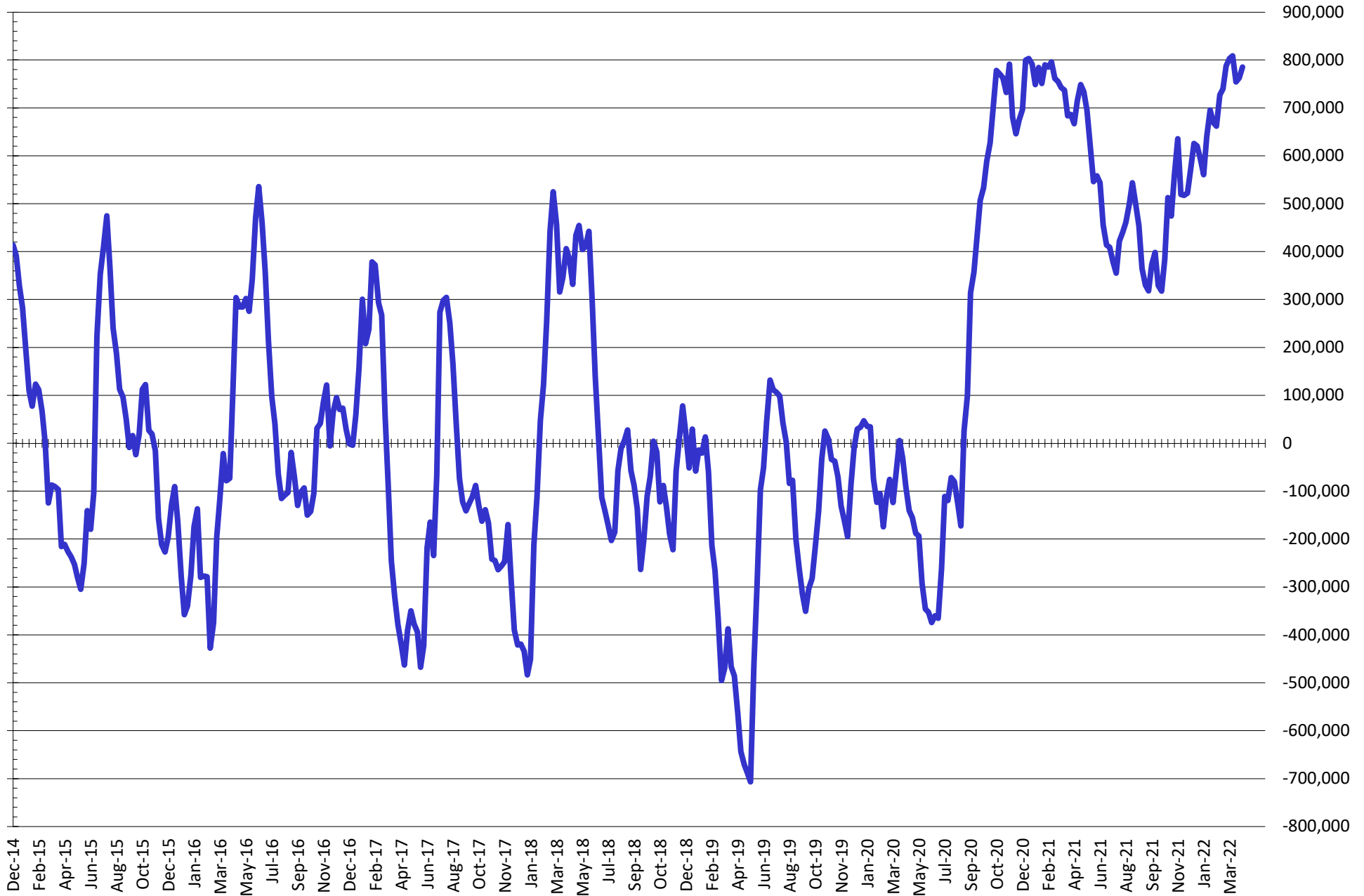


NET POSITION FUTURES AND OPTIONS OF SWAP AND MANAGED FUNDS IN KANSAS WHEAT



Source: CFTC and FI
4/16/2022

NET POSITION FUTURES AND OPTIONS OF SWAP AND MANAGED FUNDS IN COMBINED SRW, HRW, CORN, SOYBEANS, SOYMEAL AND SOYOIL



— Net Managed Money

Source: CFTC and FI
4/16/2022

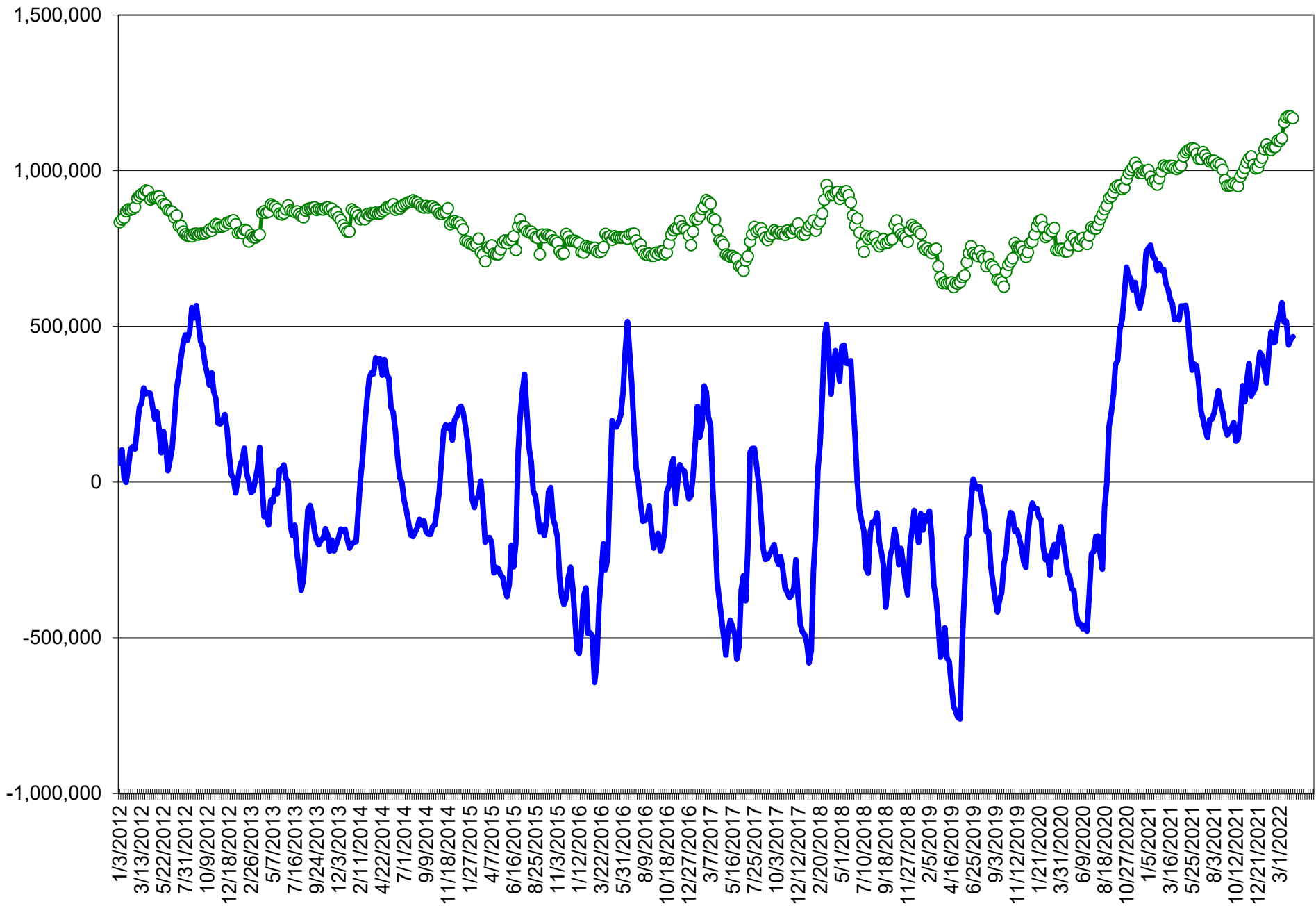
COMMITMENT OF TRADERS
FUTURES & OPTIONS NET POSITIONS (INDEX BROKEN OUT)
AS OF 04/12/2022
(IN THOUSAND CONTRACTS)

	COMMERCIAL				(FUND) NON COMMERCIAL				(SPEC) NON-REPORTABLE			
	12-Apr	5-Apr	29-Mar	22-Mar	12-Apr	5-Apr	29-Mar	22-Mar	12-Apr	5-Apr	29-Mar	22-Mar
	WHEAT											
Chicago	(121.6)	(121.0)	(118.6)	(120.7)	(37.0)	(37.7)	(43.2)	(41.3)	(2.5)	(4.8)	(4.4)	(3.1)
Kansas City	(80.8)	(78.8)	(79.3)	(80.7)	15.7	14.2	15.8	16.3	2.2	0.8	0.2	(0.6)
Minneapolis	-	-	-	-	-	-	-	-	-	-	-	-
All Wheat	(202.4)	(199.8)	(197.9)	(201.4)	(21.3)	(23.5)	(27.4)	(25.0)	(0.3)	(3.9)	(4.3)	(3.7)
CORN	(726.2)	(712.0)	(701.7)	(743.1)	271.1	266.0	261.3	304.7	(36.6)	(47.7)	(45.2)	(36.4)
OATS	-	-	-	-	-	-	-	-	-	-	-	-
SOYBEANS	(279.6)	(274.6)	(276.8)	(302.8)	97.9	93.6	93.5	112.1	(27.2)	(29.1)	(29.6)	(26.6)
SOY OIL	(194.4)	(181.6)	(179.0)	(189.4)	55.2	49.4	47.8	53.4	21.3	15.3	15.2	18.1
SOY MEAL	(225.1)	(229.9)	(228.5)	(234.4)	63.5	70.2	65.2	70.9	35.7	33.8	32.4	32.2

	TOTAL OPEN INTEREST				(INDEX) COMMERCIAL INDEX TRADERS				(INDEX) % NET OF TOTAL OPEN INTEREST			
	12-Apr	5-Apr	29-Mar	22-Mar	12-Apr	5-Apr	29-Mar	22-Mar	12-Apr	5-Apr	29-Mar	22-Mar
	WHEAT											
Chicago	486,821	480,453	471,606	518,617	161.2	163.5	166.2	165.0	33.1%	34.0%	35.2%	31.8%
Kansas City	210,439	208,282	204,327	208,907	62.9	63.8	63.4	65.0	29.9%	30.6%	31.0%	31.1%
Minneapolis	-	-	-	-	-	-	-	-	-	-	-	-
All Wheat	697,260	688,735	675,933	727,524	224.0	227.3	229.6	230.0	32.1%	33.0%	34.0%	31.6%
CORN	2,263,395	2,170,866	2,062,031	2,149,285	491.7	493.7	485.5	474.8	21.7%	22.7%	23.5%	22.1%
OATS	-	-	-	-	-	-	-	-	-	-	-	-
SOYBEANS	984,410	979,037	982,306	1,016,326	208.9	210.1	212.9	217.2	21.2%	21.5%	21.7%	21.4%
SOY OIL	432,997	410,957	400,221	415,464	117.9	116.9	116.0	117.9	27.2%	28.4%	29.0%	28.4%
SOY MEAL	461,136	460,780	455,338	457,776	125.9	126.0	130.8	131.3	27.3%	27.3%	28.7%	28.7%

SOURCE: CFTC & FI

NET POSITION FUTURES AND OPTIONS OF SPECULATORS AND INDEX FUNDS IN COMBINED SRW, HRW, CORN, SOYBEANS, SOYMEAL AND SOYOIL



Source: CFTC and FI

○ Net Index

— Net Speculator

4/16/2022

Traditional Daily Estimate of Funds 4/12/22

	(Neg)-"Short"	Pos-"Long"			
Actual less Est.	(7.5)	(12.6)	(25.1)	(5.5)	0.8
	Corn	Bean	Chi. Wheat	Meal	Oil
Actual	495.6	198.3	23.9	116.3	98.3
13-Apr	4.0	2.0	5.0	(4.0)	5.0
14-Apr	3.0	3.0	(7.0)	2.0	2.0
15-Apr					
18-Apr					
19-Apr					
FI Est. of Futures Only 4/12/22	502.6	203.3	21.9	114.3	105.3
FI Est. Futures & Options	472.2	191.1	27.2	107.0	98.8
Futures only record long "Traditional Funds"	547.7 1/26/2021	280.9 11/10/2020	86.5 8/7/2018	167.5 5/1/2018	160.2 11/1/2016
Futures only record short	(235.0) 6/9/2020	(118.3) 4/30/2019	(130.0) 4/25/2017	(49.5) 3/1/2016	(69.8) 9/18/2018
Futures and options record net long	557.6 1/12/2021	270.9 10/6/2020	64.8 8/7/2012	132.1 5/1/2018	159.2 1/1/2016
Futures and options record net short	(270.6) 4/26/2019	(132.0) 4/30/2019	(143.3) 4/25/2017	(64.1) 3/1/2016	(77.8) 9/18/2018

Managed Money Daily Estimate of Funds 4/12/22

	Corn	Bean	Chi. Wheat	Meal	Oil
Latest CFTC Fut. Only	356.9	164.6	17.1	93.0	84.5
Latest CFTC F&O	370.0	171.9	16.6	93.4	84.1
FI Est. Managed Fut. Only	364	170	15	91	92
FI Est. Managed Money F&O	377	177	15	91	91

Index Funds Latest Positions (as of last Tuesday)

Index Futures & Options	491.7	208.9	161.2	NA	117.9
Change From Previous Week	(2.0)	(1.1)	(2.3)	NA	1.0

Source: Reuters, CFTC & FI (FI est. are noted with latest date)

Disclaimer

TO CLIENTS/PROSPECTS OF FUTURES INTERNATIONAL, SEE RISK DISCLOSURE BELOW:

THIS COMMUNICATION IS CONVEYED AS A SOLICITATION FOR ENTERING INTO A DERIVATIVES TRANSACTION.

Any trading recommendations and market or other information to Customer by Futures International (FI), although based upon information obtained from sources believed by FI to be reliable may not be accurate and may be changed without notice to customer. FI makes no guarantee as to the accuracy or completeness of any of the information or recommendations furnished to Customer. Customer understands that FI, its managers, employees and/or affiliates may have a position in commodity futures, options or other derivatives which may not be consistent with the recommendations furnished by FI to Customer.

The risk of trading futures and options and other derivatives involves a substantial risk of loss and is not suitable for all persons. In purchasing an option, the risk is limited to the premium paid, and all commissions and fees involved with the trade. When an option is shorted or written, the writer of the option has unlimited risk with respect to the option written. The use of options strategies such as a straddles and strangles involve multiple option positions and may substantially increase the amount of commissions and fees paid to execute the strategy. Option prices do not necessarily move in tandem with cash or futures prices. Each person must consider whether a particular trade, combination of trades or strategy is suitable for that person's financial means and objectives.

This material may include discussions of seasonal patterns, however, futures prices have already factored in the seasonal aspects of supply and demand, and seasonal patterns are no indication of future market trends. Finally, past performance is not indicative of future results.

This communication may contain links to third party websites which are not under the control of FI and FI is not responsible for their content. Products and services are offered only in jurisdictions where solicitation and sale are lawful, and in accordance with applicable laws and regulations in each such jurisdiction.