

# CFTC COMMITMENT OF TRADERS REPORT

As of 4/19/2022

## TRADITIONAL FUNDS net position changes

Wed to Tue, in 000 contracts

	Corn	Bean	Meal	Oil	Chi. Wheat	KC Wheat	Min Wheat
Futures Only	5.0	1.8	6.5	6.9	(0.6)	1.0	2.2
Futures & Options Combined	15.0	7.7	6.4	9.5	(1.2)	1.0	2.4

## TRADITIONAL COMMERCIAL net position changes

	Corn	Bean	Meal	Oil	Chi. Wheat	KC Wheat	Min Wheat
Futures Only	(12.6)	(4.2)	(6.6)	(8.3)	0.8	(1.2)	(2.7)
Futures & Options Combined	(20.6)	(9.7)	(6.5)	(10.9)	1.3	(1.2)	(2.8)

## MANAGED MONEY net position changes

	Corn	Bean	Meal	Oil	Chi. Wheat	KC Wheat	Min Wheat
Futures Only	6.0	6.7	6.3	12.5	(2.3)	0.5	1.7
Futures & Options Combined	9.2	7.9	6.1	12.0	(2.2)	0.4	1.7

## SWAP DEALERS net position changes

	Corn	Bean	Meal	Oil	Chi. Wheat	KC Wheat	Min Wheat
Futures Only	2.2	(0.3)	(0.4)	(1.3)	(0.4)	1.5	0.0
Futures & Options Combined	(0.1)	(1.3)	(0.5)	(1.3)	(0.5)	1.4	(0.0)

## PRODUCERS/END USERS net position changes

	Corn	Bean	Meal	Oil	Chi. Wheat	KC Wheat	Min Wheat
Futures Only	(14.8)	(3.9)	(6.1)	(7.0)	1.3	(2.7)	(2.7)
Futures & Options Combined	(20.5)	(8.4)	(6.1)	(9.6)	1.8	(2.6)	(2.8)

## INDEX net position changes

	Corn	Bean	Meal	Oil	Chi. Wheat	KC Wheat	Min Wheat
Futures & Options Combined	(5.4)	2.8	(0.9)	(0.6)	(0.4)	0.2	NA

## SUPPLEMENTAL NON-COMMERCIAL net position changes

	Corn	Bean	Meal	Oil	Chi. Wheat	KC Wheat	Min Wheat
Futures & Options Combined	14.9	5.7	7.0	9.3	(1.1)	0.3	NA

## OPEN INTEREST net position changes

Wed to Tue, in 000 contracts

	Corn	Bean	Meal	Oil	Chi. Wheat	KC Wheat	Min Wheat
Futures Only	35.4	10.7	5.8	29.6	(1.2)	1.5	1.1
Futures & Options Combined	99.8	20.6	5.3	38.3	(2.2)	1.1	1.3

Source: CFTC and FI

Wed to Tue, in 000 contracts

4/22/2022

**COMMITMENT OF TRADERS  
FUTURES ONLY NET POSITIONS  
AS OF 04/19/2022  
(IN THOUSAND CONTRACTS)**

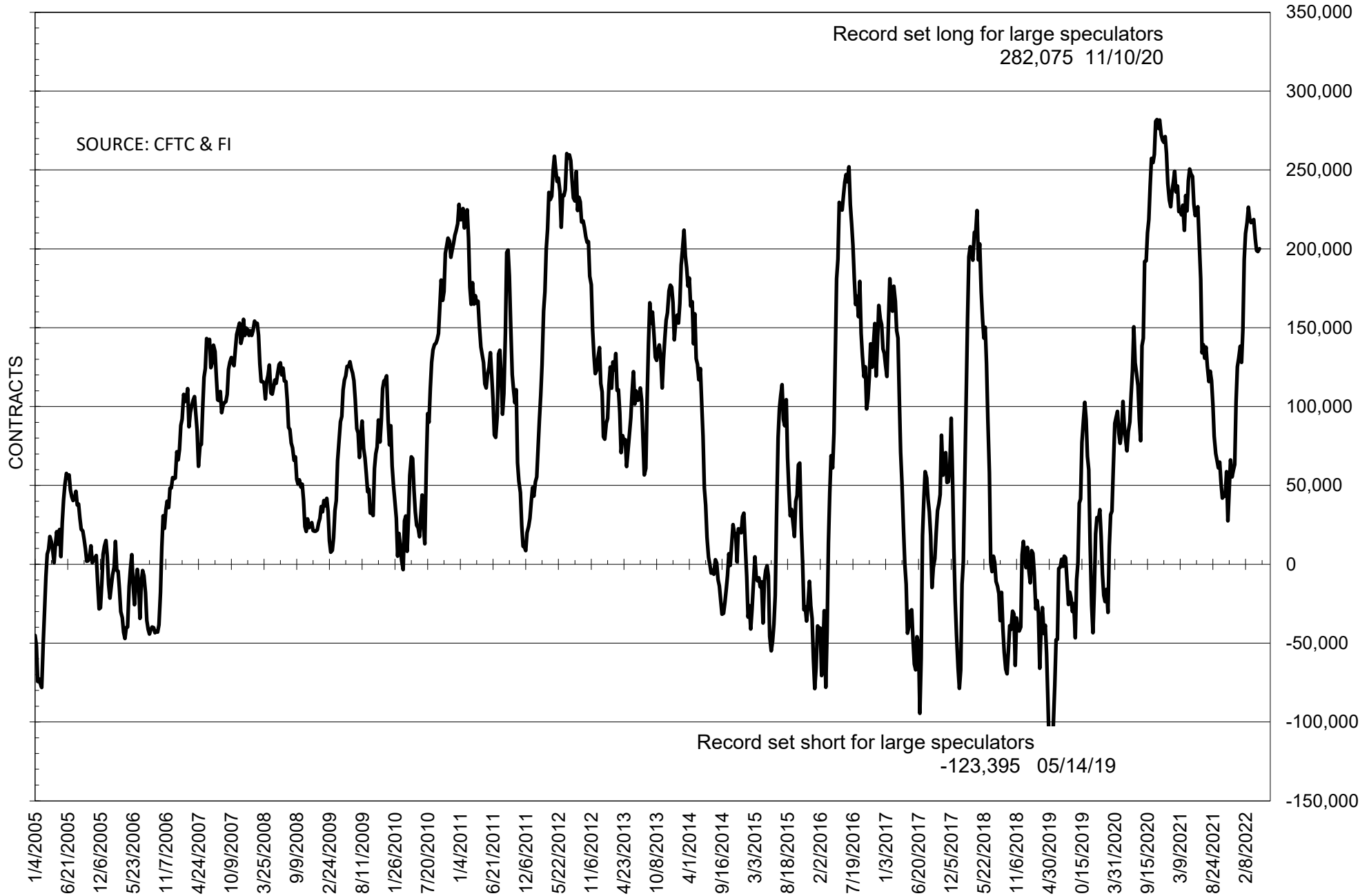
	COMMERCIAL				(FUND) NON COMMERCIAL				(SPEC) NON-REPORTABLE			
	19-Apr	12-Apr	5-Apr	29-Mar	19-Apr	12-Apr	5-Apr	29-Mar	19-Apr	12-Apr	5-Apr	29-Mar
	<b>WHEAT</b>											
Chicago	-20.4	-21.3	-15.3	-9.4	23.2	23.9	20.0	13.6	-2.8	-2.6	-4.6	-4.1
Kansas City	-46.6	-45.4	-44.0	-45.7	44.3	43.3	43.1	45.0	2.3	2.1	0.9	0.7
Minneapolis	-29.8	-27.2	-26.1	-25.5	25.2	23.0	22.5	21.5	4.6	4.2	3.6	4.1
All Wheat	-96.9	-93.8	-85.5	-80.6	92.7	90.2	85.5	80.1	4.2	3.7	-0.1	0.6
<b>CORN</b>	-456.3	-443.7	-424.2	-424.7	500.6	495.6	487.1	482.1	-44.3	-51.9	-62.9	-57.4
<b>OATS</b>	#VALUE!	#VALUE!	#VALUE!	#VALUE!	#VALUE!	#####	#VALUE!	#VALUE!	#VALUE!	#VALUE!	#VALUE!	#VALUE!
<b>SOYBEANS</b>	-174.9	-170.7	-170.9	-178.8	200.1	198.3	198.9	206.5	-25.2	-27.6	-28.0	-27.7
<b>SOY OIL</b>	-127.4	-119.1	-105.2	-102.9	105.2	98.3	89.5	87.3	22.2	20.8	15.7	15.6
<b>SOY MEAL</b>	-154.8	-148.2	-154.0	-150.7	122.8	116.3	123.8	121.8	32.0	32.0	30.2	28.9

Oats positions thin to be reported

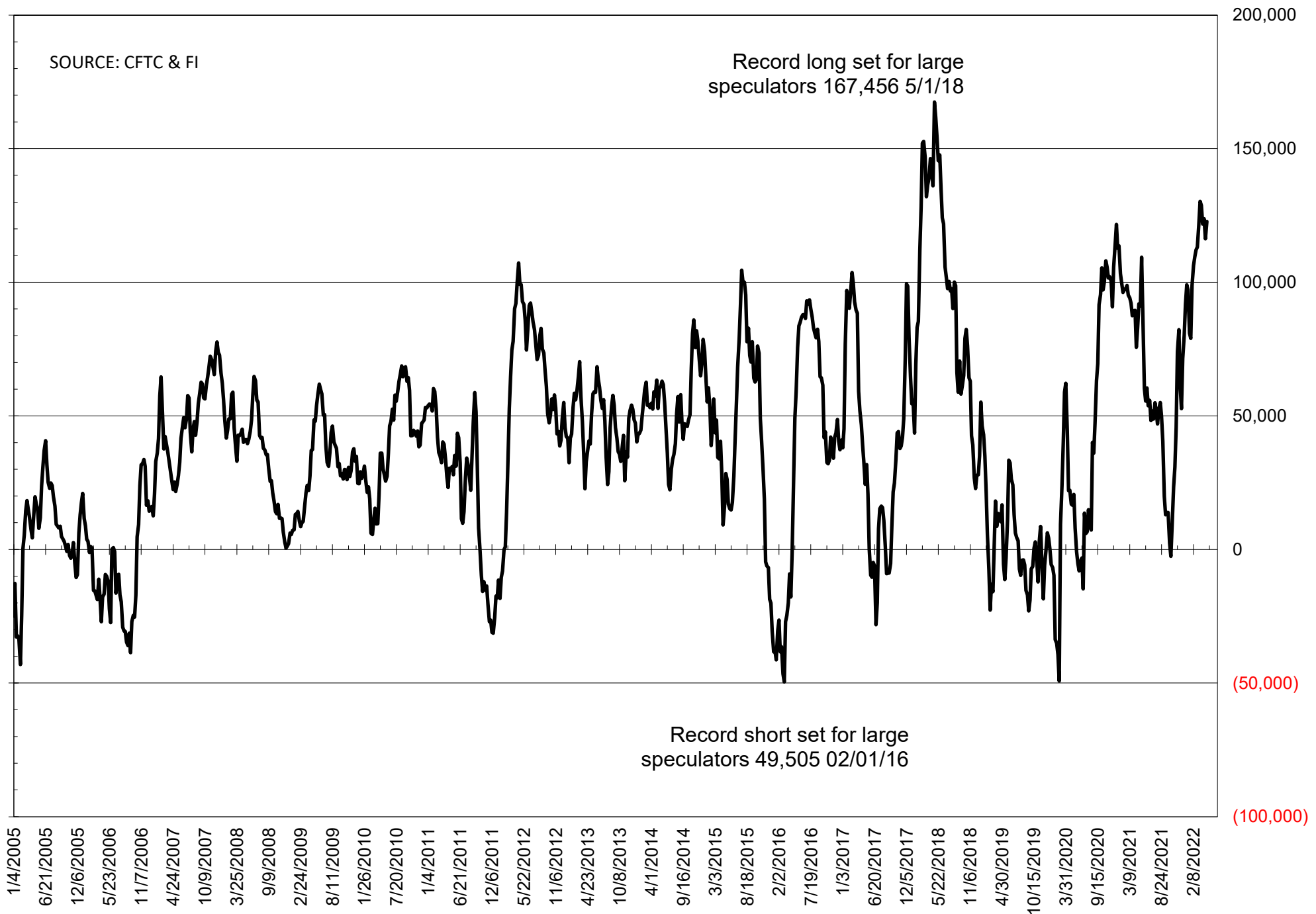
	TOTAL OPEN INTEREST				NEARBY FUTURES PRICE					19-Apr-22 LAST REPORTED % HELD BY TRADERS			
	19-Apr	12-Apr	5-Apr	29-Mar	K Latest	K 19-Apr	K 12-Apr	K 5-Apr	K 29-Mar	LARGE FUND		SMALL	
										LONG	SHORT	LONG	SHORT
<b>WHEAT</b>													
Chicago	337038	338271	344615	341224	1065.50	1099.00	1103.75	1045.25	1014.25	0%	29%	0%	10%
Kansas City	177370	175900	178149	178444	1142.75	1171.50	1162.25	1082.75	1024.50	0%	11%	0%	11%
Minneapolis	73573	72508	67661	65531	1160.75	1167.50	1153.25	1108.75	1043.25	0%	2%	0%	14%
<b>CORN</b>	1625198	1589848	1556206	1515106	793.00	804.00	776.25	759.75	726.25	0%	5%	0%	12%
<b>OATS</b>	#VALUE!	#VALUE!	#VALUE!	#VALUE!	721.25	746.50	807.00	745.25	719.00	0%	#VALUE!	0%	#VALUE!
<b>SOYBEANS</b>	762855	752157	756785	755139	1716.00	1716.50	1670.25	1631.00	1643.00	33%	7%	7%	11%
<b>SOY OIL</b>	394049	364457	349547	340690	83.26	80.21	75.43	72.41	71.66	0%	5%	0%	5%
<b>SOY MEAL</b>	403773	397955	399314	396516	458.80	464.40	460.90	465.90	466.00	0%	3%	0%	5%

SOURCE: CFTC & FI

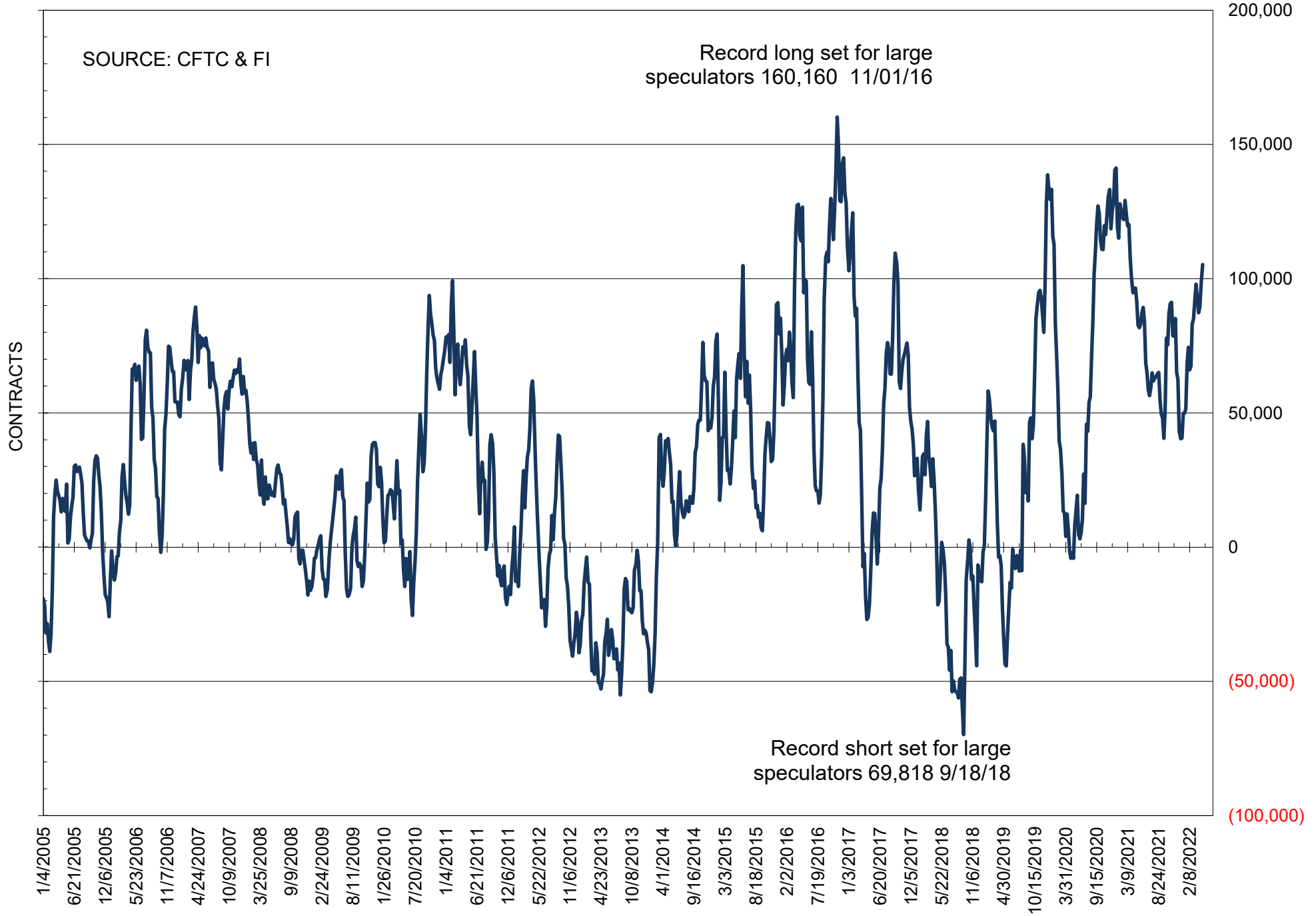
# NET POSITION OF FUTURES ONLY LARGE SPECS IN SOYBEANS



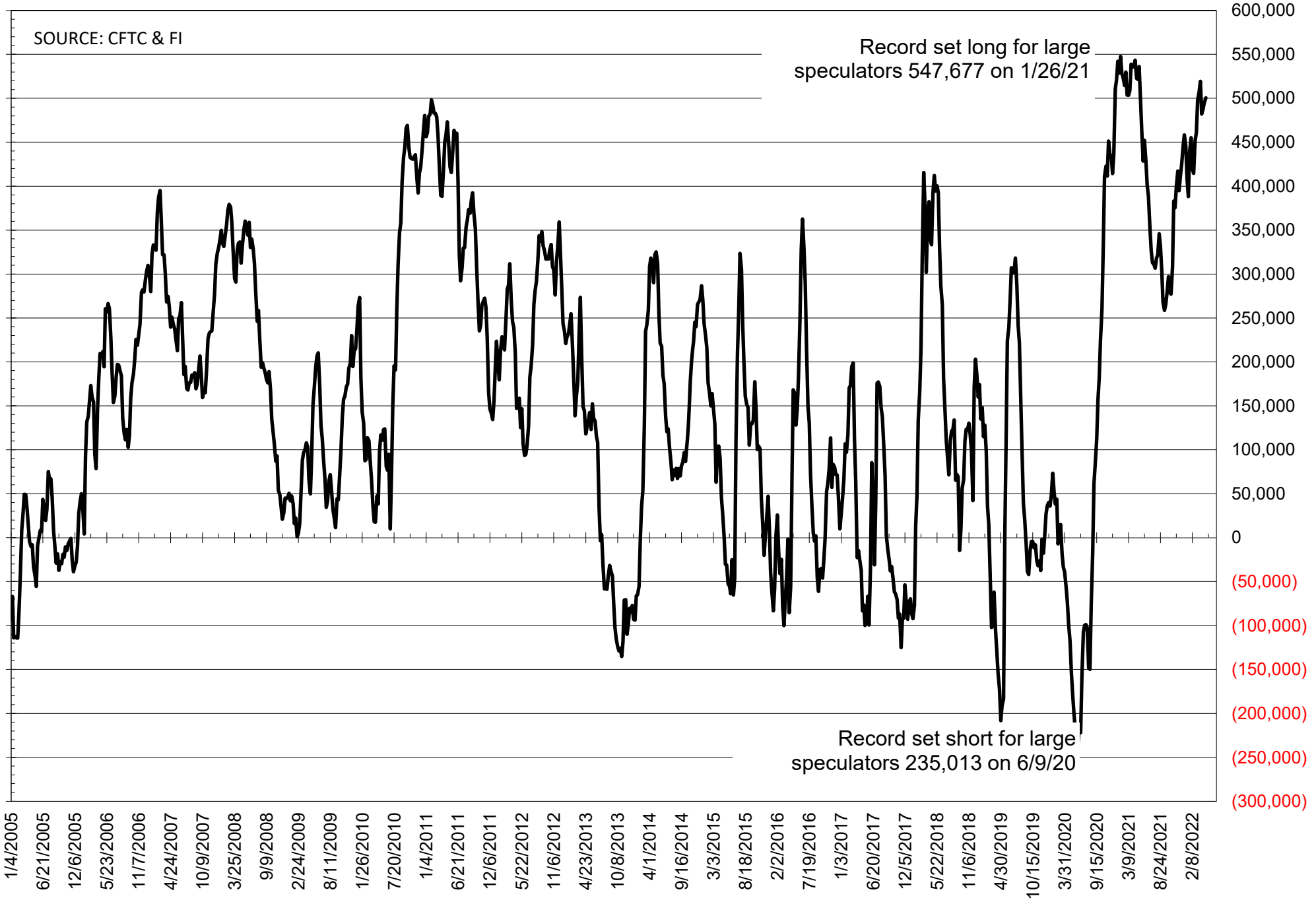
# NET POSITION OF FUTURES ONLY LARGE SPECS IN SOYMEAL



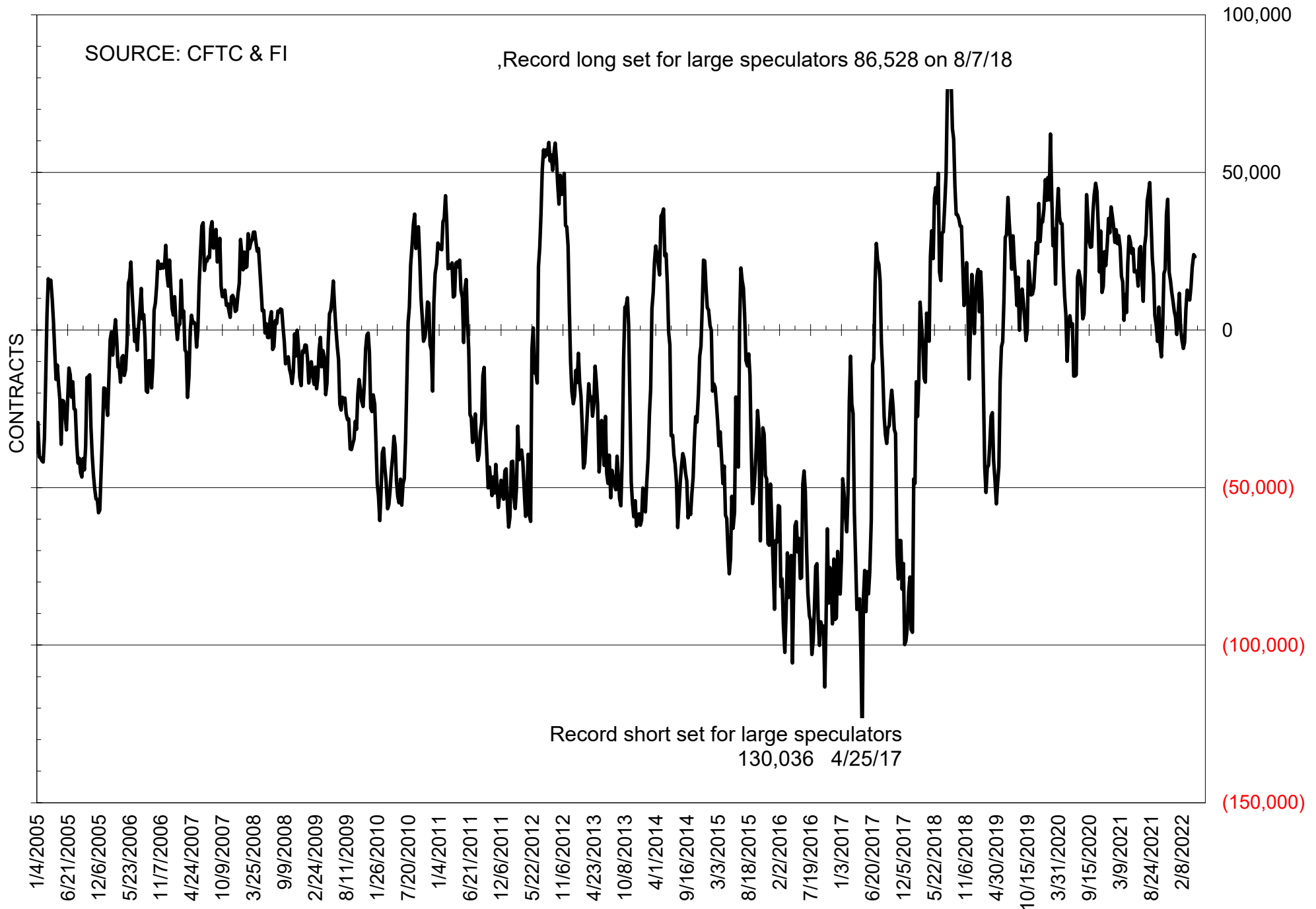
# NET POSITION OF FUTURES ONLY LARGE SPECS IN SOYOIL



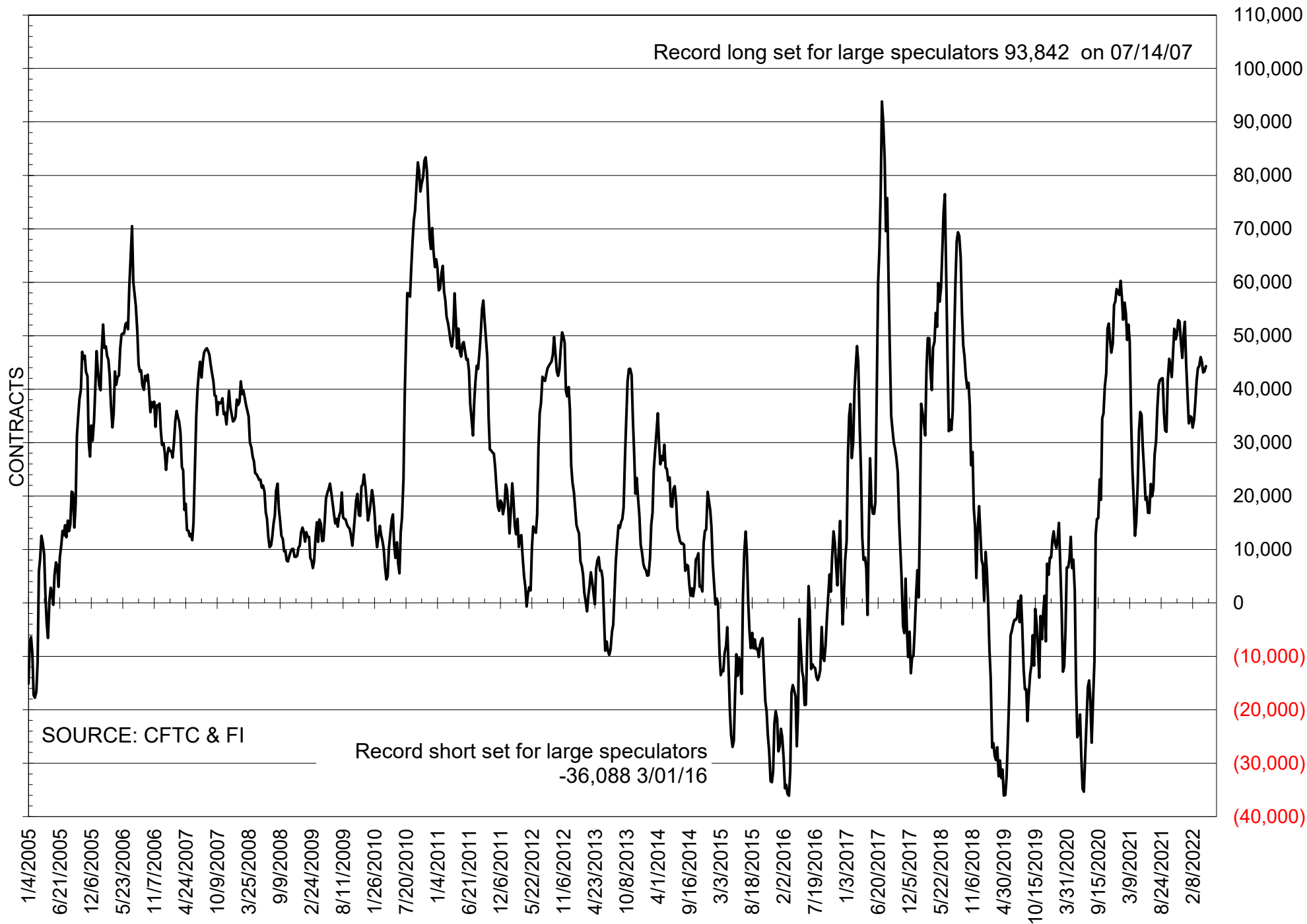
# NET POSITION OF LARGE SPECULATORS IN CORN



# NET POSITION OF FUTURES ONLY LARGE SPECS IN CHICAGO WHEAT

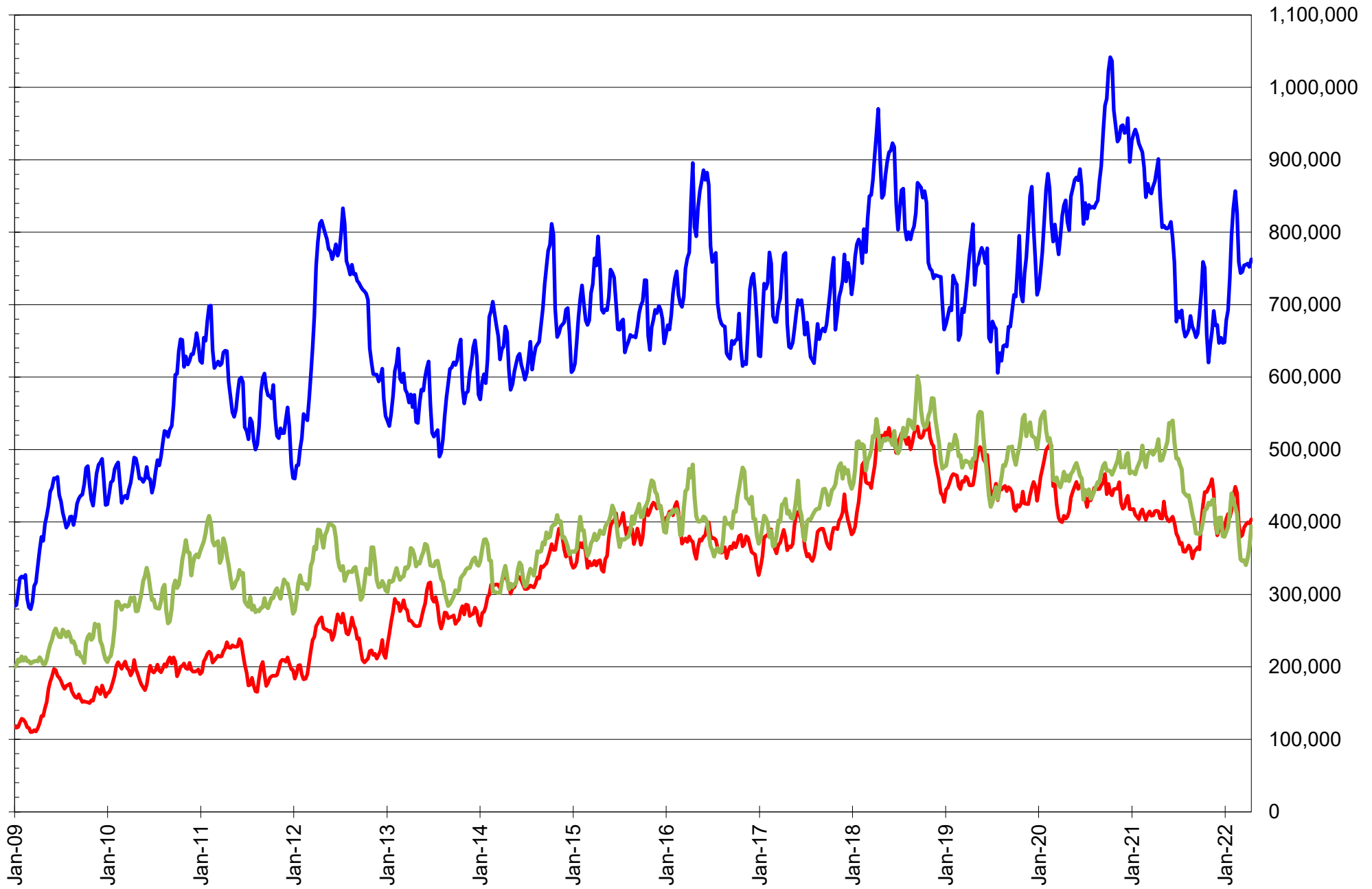


# NET POSITION OF LARGE SPECULATORS IN KANSAS CITY WHEAT





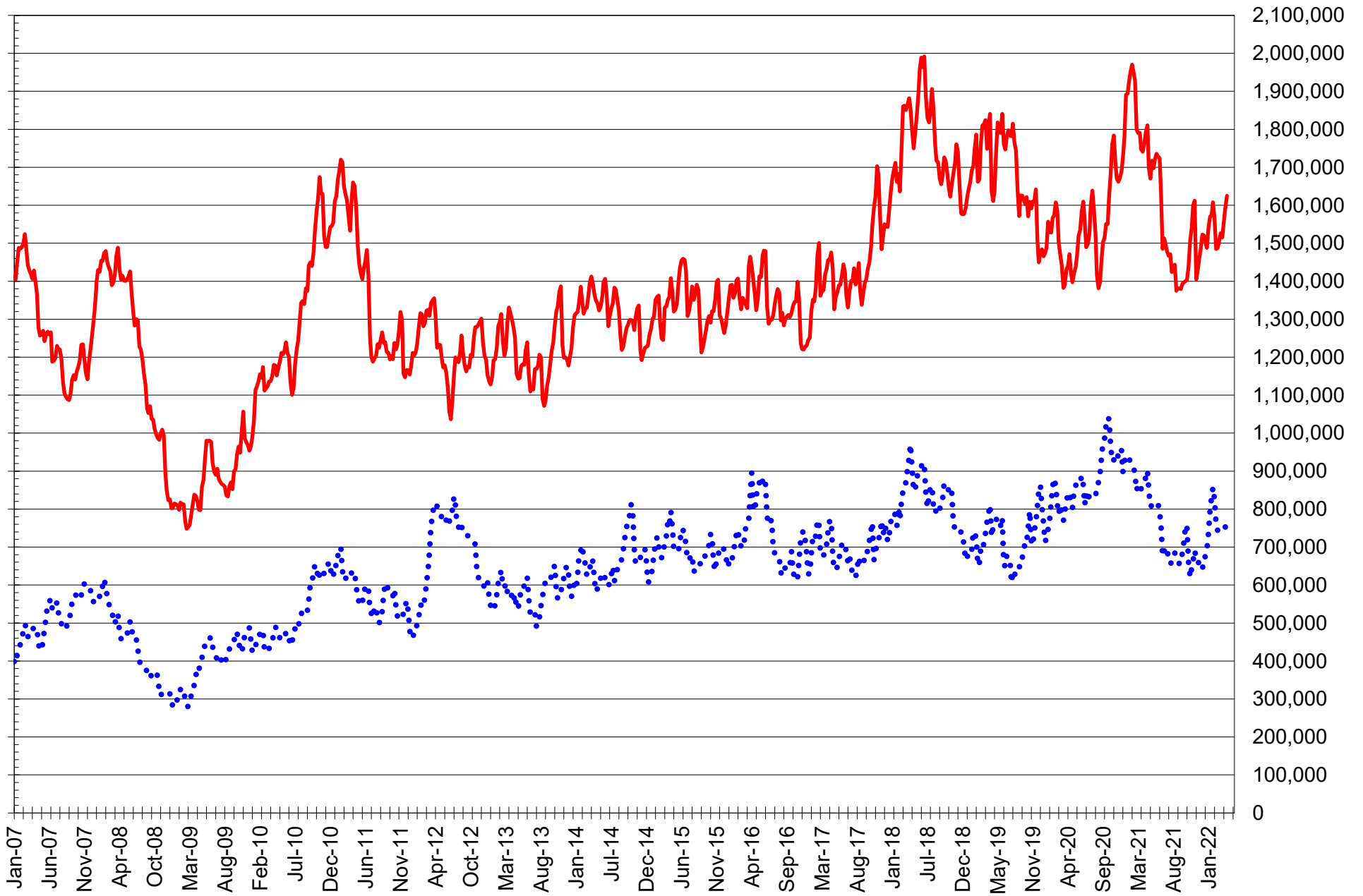
# TOTAL OPEN INTEREST IN SOYBEANS, MEAL AND OIL, FUTURES ONLY



SOURCE: CFTC & FI

— SOYBEANS — SOYBEAN MEAL — SOYBEAN OIL

# TOTAL OPEN INTEREST IN CORN AND SOYBEANS, FUTURES ONLY



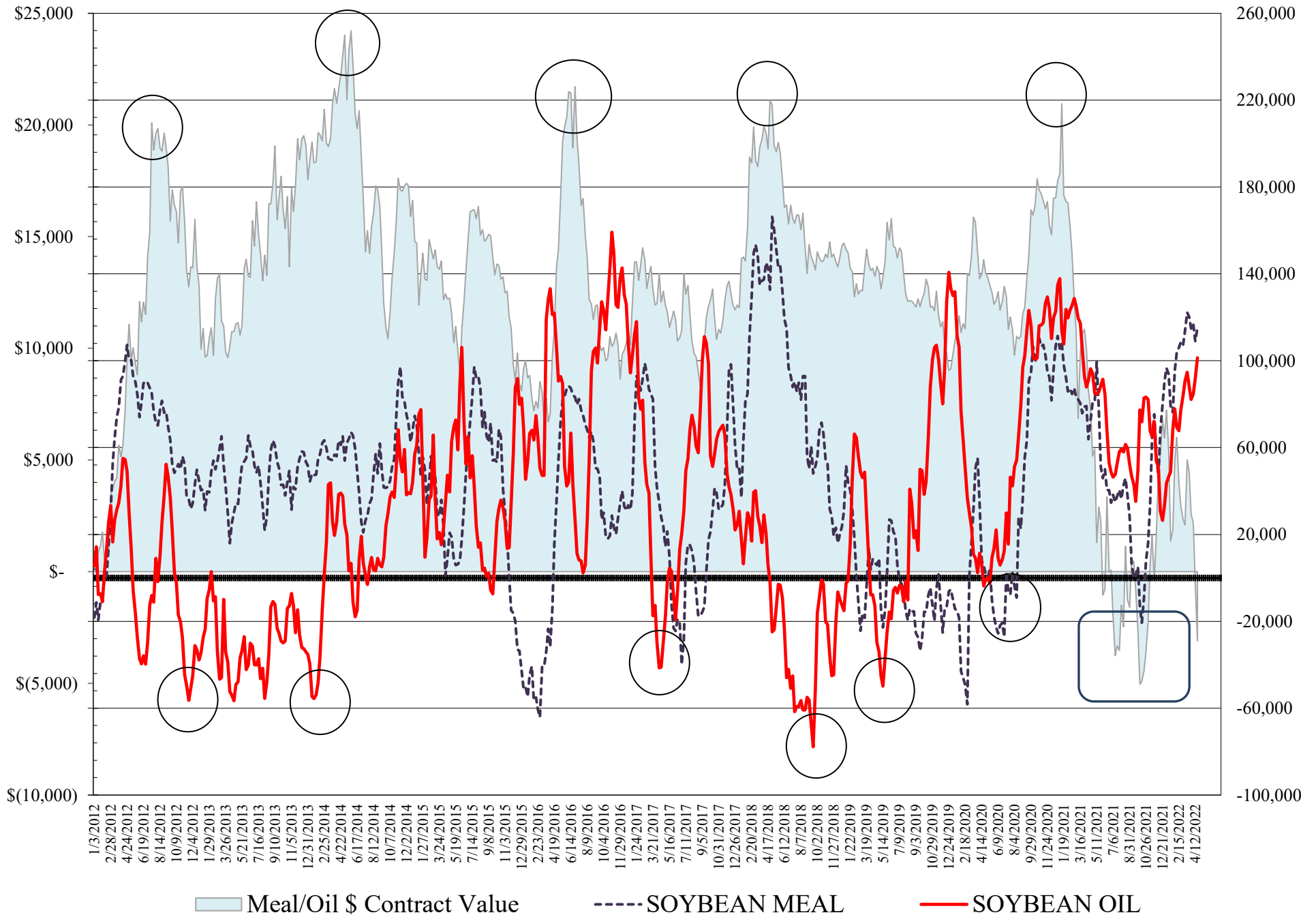
SOURCE: CFTC & FI

— CORN

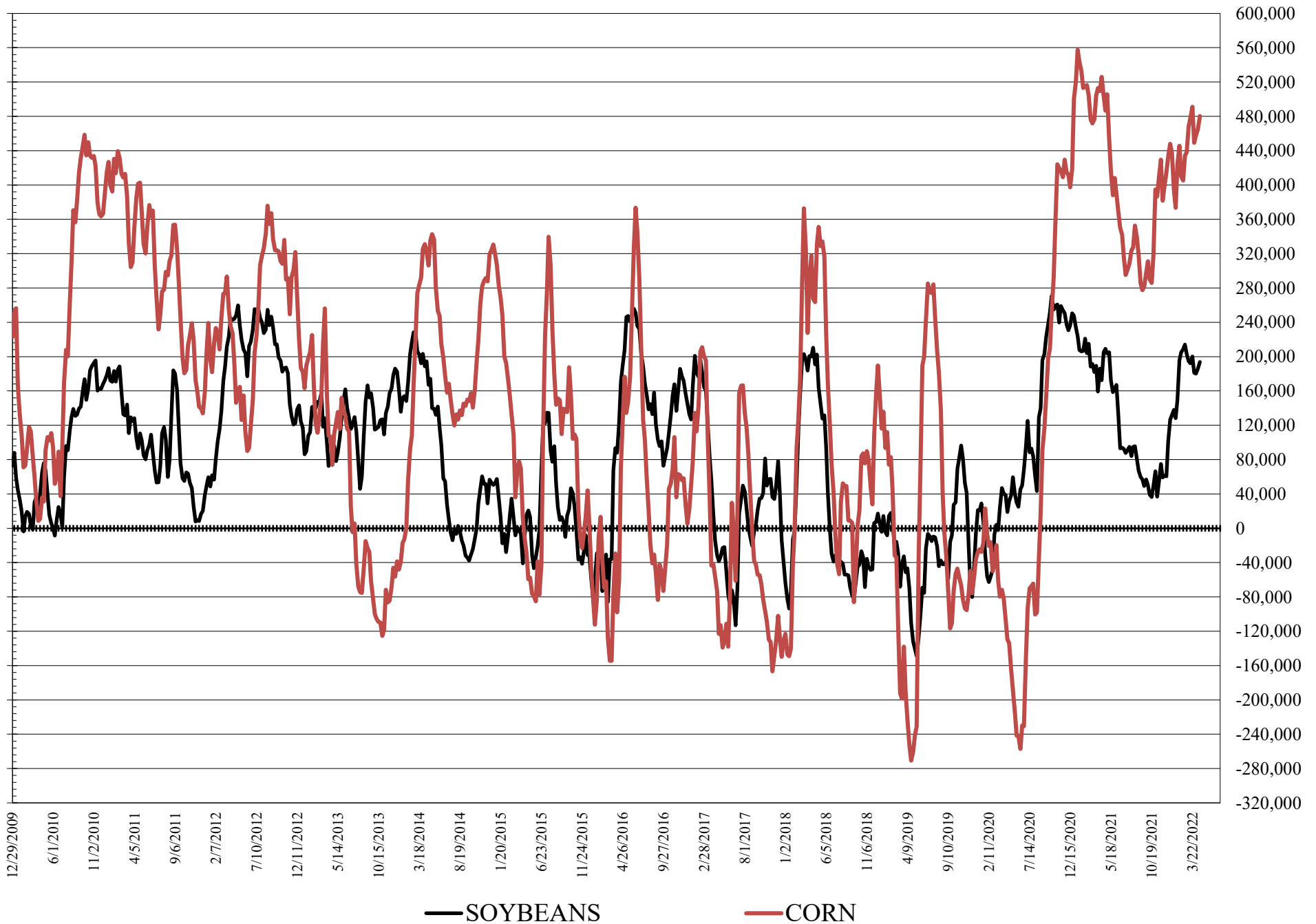
•••• SOYBEANS



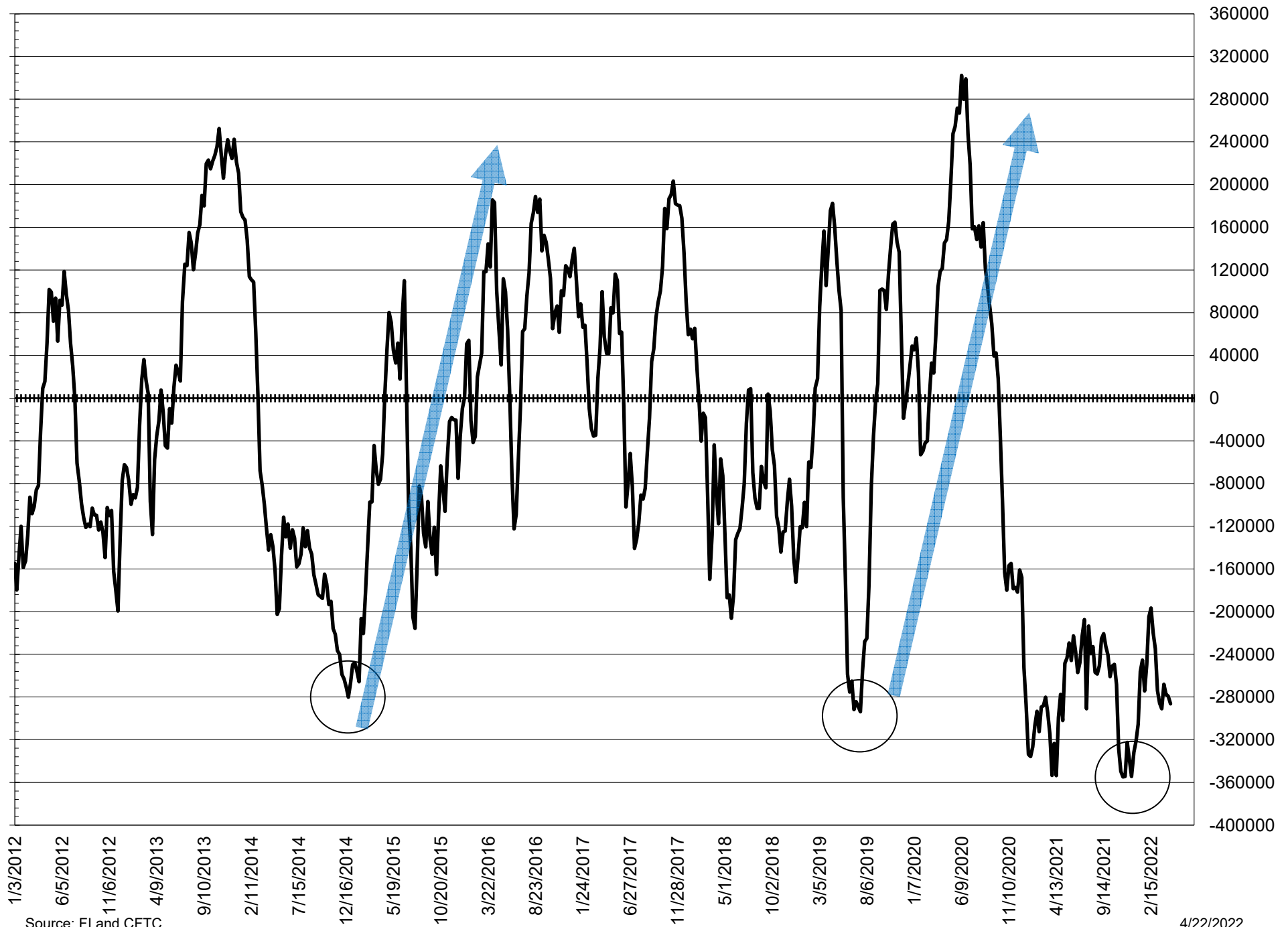
# NET POSITION FUTURES AND OPTIONS OF LARGE SPECULATORS IN SOYBEAN MEAL AND SOYBEAN OIL



# NET POSITION FUTURES AND OPTIONS OF LARGE SPECULATORS IN SOYBEANS AND CORN



# NET POSITION FUTURES AND OPTIONS SPREAD OF LARGE SPECULATORS IN SOYBEANS MINUS CORN



Source: FI and CFTC

4/22/2022



**DISAGGREGATED COMMITMENT OF TRADERS  
FUTURES & OPTIONS NET POSITIONS  
AS OF 04/19/2022  
(IN THOUSAND CONTRACTS)**

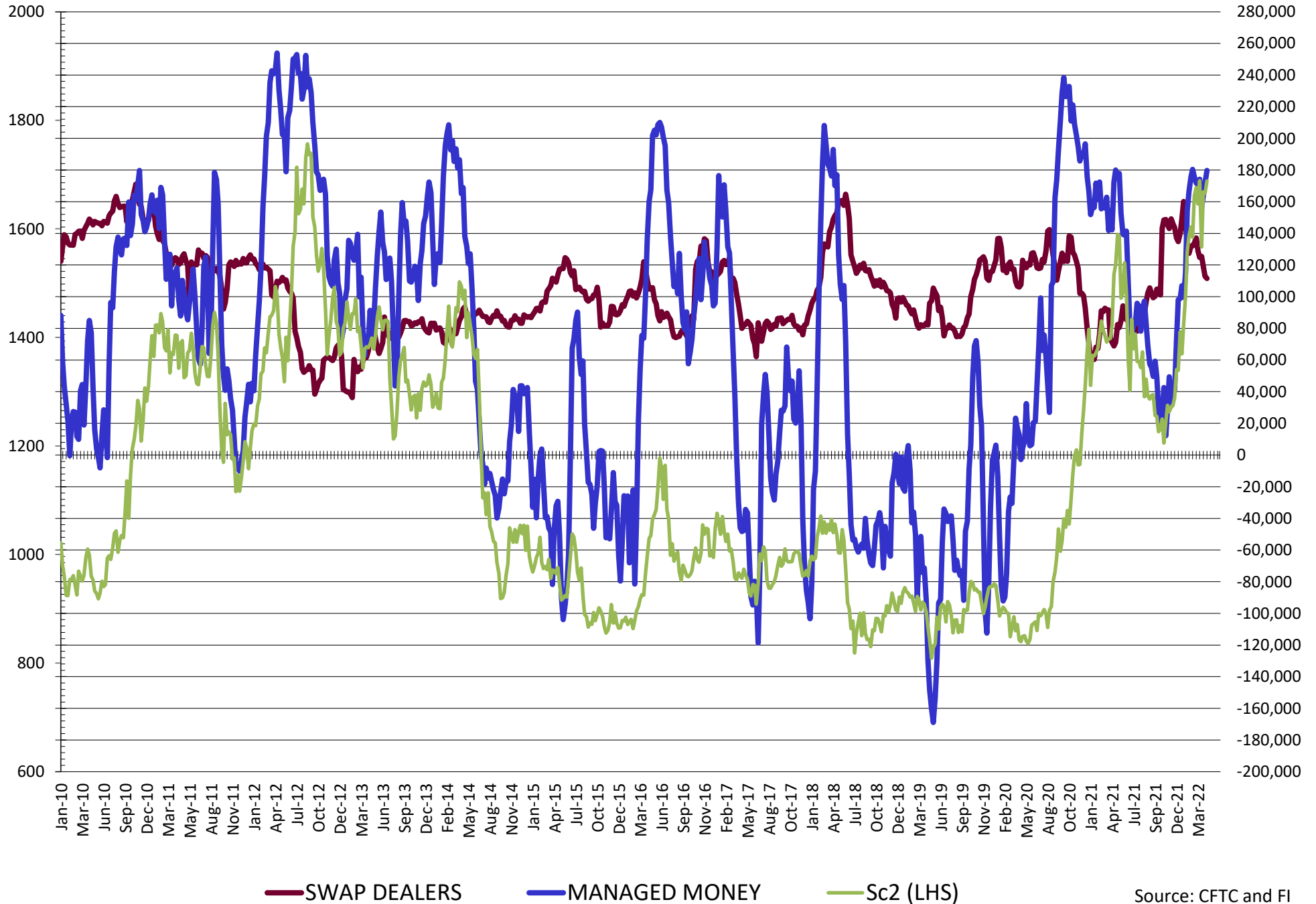
	PRODUCER / MERCHANT / PROCESSOR / USER				(INDEX/ETF) SWAP DEALERS				(CTA/CPO/OTHER UNREGISTERED) MANAGED MONEY			
	19-Apr	12-Apr	5-Apr	29-Mar	19-Apr	12-Apr	5-Apr	29-Mar	19-Apr	12-Apr	5-Apr	29-Mar
	WHEAT											
Chicago	(93.6)	(95.4)	(95.6)	(93.5)	68.2	68.7	73.8	78.0	14.5	16.6	14.0	19.4
Kansas City	(73.5)	(70.8)	(68.9)	(69.7)	25.4	24.0	23.5	22.3	49.8	49.4	45.0	45.3
Minneapolis	(30.3)	(27.5)	(25.9)	(25.2)	0.6	0.6	0.4	0.4	19.9	18.1	18.3	14.0
All Wheat	(197.4)	(193.7)	(190.4)	(188.4)	94.2	93.3	97.7	100.7	84.2	84.2	77.2	78.8
CORN	(735.2)	(714.7)	(700.9)	(694.3)	286.0	286.1	290.9	290.3	379.1	370.0	362.3	354.6
OATS	0.0	0.0	0.0	0.0	0.0	0.0	0.0	0.0	0.0	0.0	0.0	0.0
SOYBEANS	(280.1)	(271.7)	(270.0)	(276.9)	111.5	112.9	119.0	125.4	179.7	171.9	163.7	156.3
SOY OIL	(208.2)	(198.6)	(186.9)	(186.1)	84.3	85.6	87.0	88.8	96.1	84.1	76.8	78.6
SOY MEAL	(241.1)	(235.0)	(240.0)	(239.5)	89.9	90.3	89.4	92.3	99.5	93.4	100.5	99.9

	TOTAL OPEN INTEREST				OTHER REPORTABLE				NON REPORTABLE			
	19-Apr	12-Apr	5-Apr	29-Mar	19-Apr	12-Apr	5-Apr	29-Mar	19-Apr	12-Apr	5-Apr	29-Mar
	WHEAT											
Chicago	484,604	486,821	480,453	471,606	13.6	12.6	12.6	0.6	(2.7)	(2.5)	(4.8)	(4.4)
Kansas City	211,504	210,439	208,282	204,327	(4.2)	(4.7)	(0.5)	1.9	2.4	2.2	0.8	0.2
Minneapolis	77,613	76,329	71,117	68,710	5.2	4.6	3.7	6.6	4.6	4.2	3.6	4.1
All Wheat	773,721	773,589	759,852	744,643	14.6	12.4	15.8	9.1	4.3	3.9	(0.3)	(0.1)
CORN	2,363,241	2,263,395	2,170,866	2,062,031	101.1	95.3	95.3	94.5	(31.0)	(36.6)	(36.6)	(36.6)
OATS	0	0	0	0	0.0	0.0	0.0	0.0	0.0	0.0	0.0	0.0
SOYBEANS	1,005,019	984,410	979,037	982,306	14.0	14.2	16.4	24.8	(25.1)	(27.2)	(29.1)	(29.6)
SOY OIL	471,333	432,997	410,957	400,221	5.2	7.7	7.9	3.6	22.7	21.3	15.3	15.2
SOY MEAL	466,468	461,136	460,780	455,338	15.8	15.5	16.2	14.9	35.8	35.7	33.8	32.4

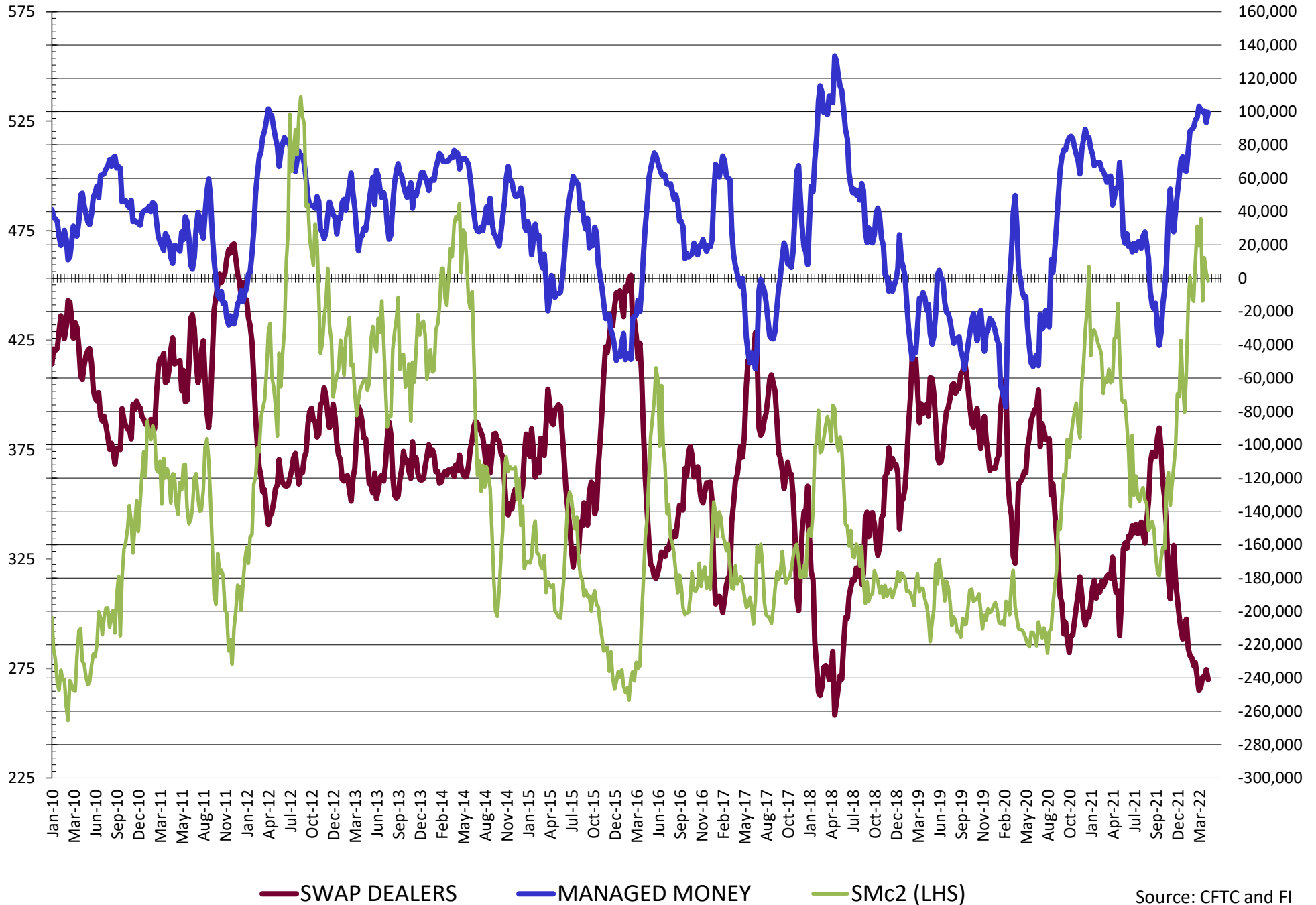
SOURCE: CFTC & FI



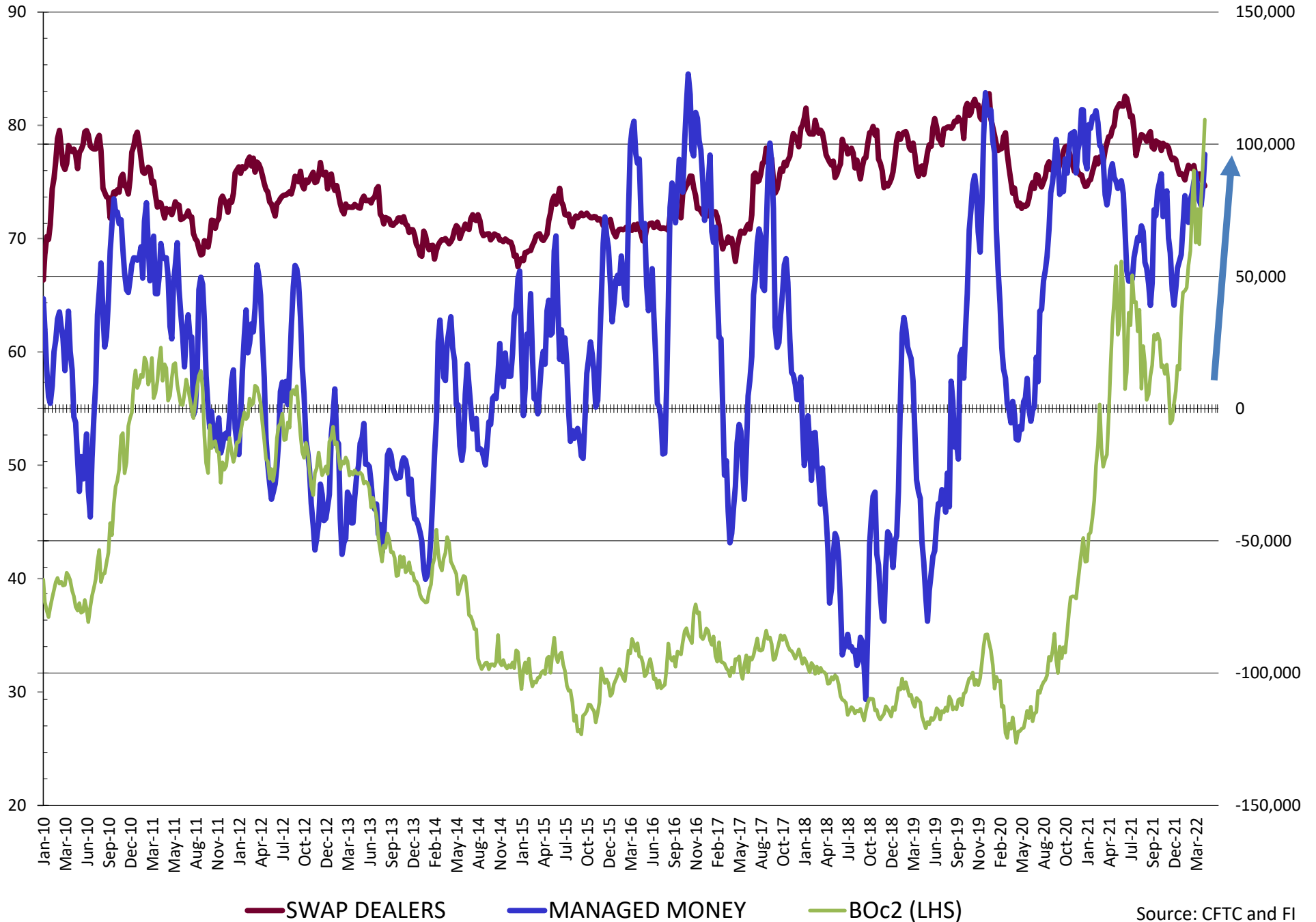
# NET POSITION FUTURES AND OPTIONS OF SWAP AND MANAGED FUNDS IN SOYBEANS



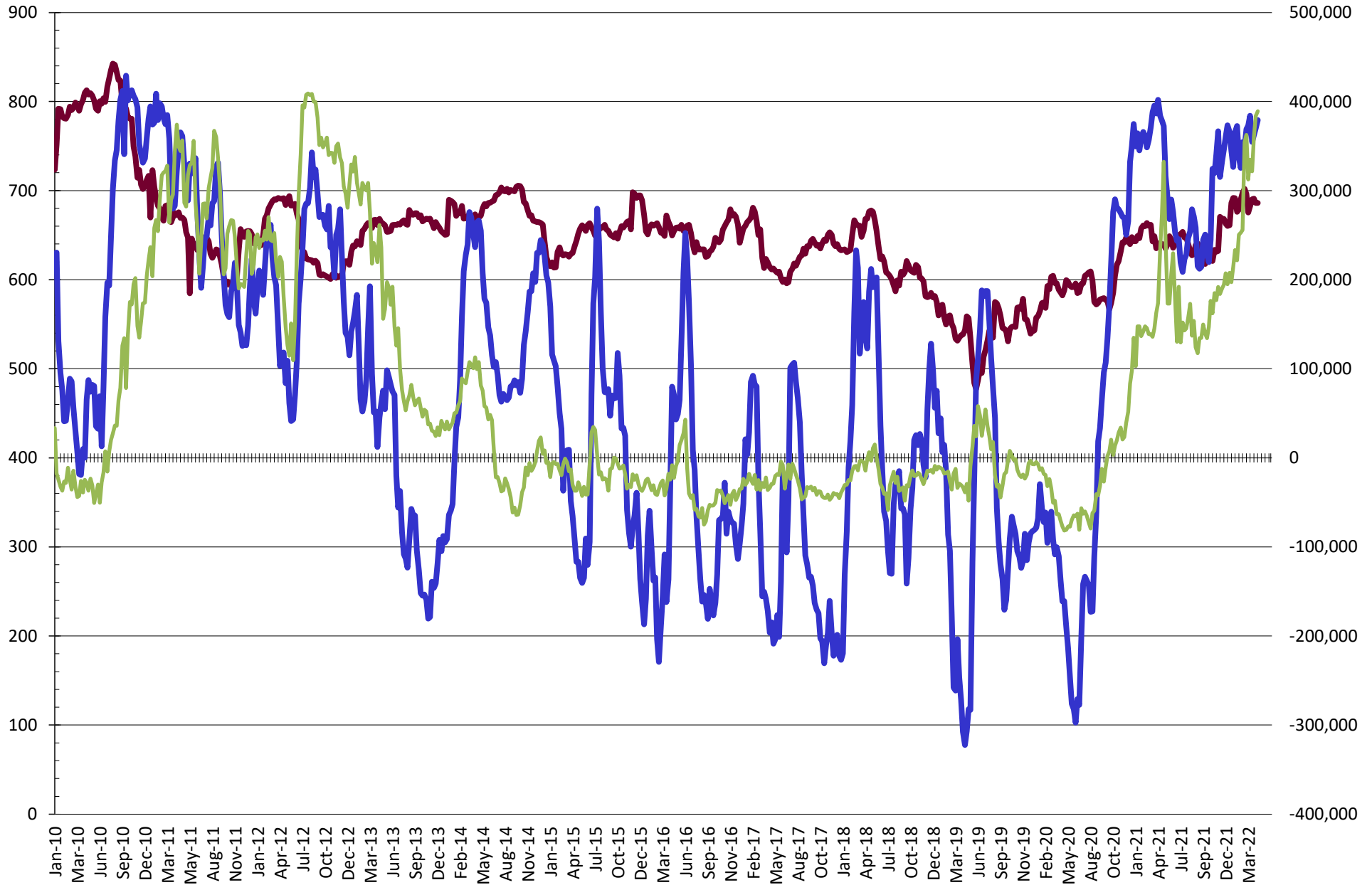
# NET POSITION FUTURES AND OPTIONS OF SWAP AND MANAGED FUNDS IN SOYBEAN MEAL



# NET POSITION FUTURES AND OPTIONS OF SWAP AND MANAGED FUNDS IN SOYBEAN OIL



# NET POSITION FUTURES AND OPTIONS OF SWAP AND MANAGED FUNDS IN CORN

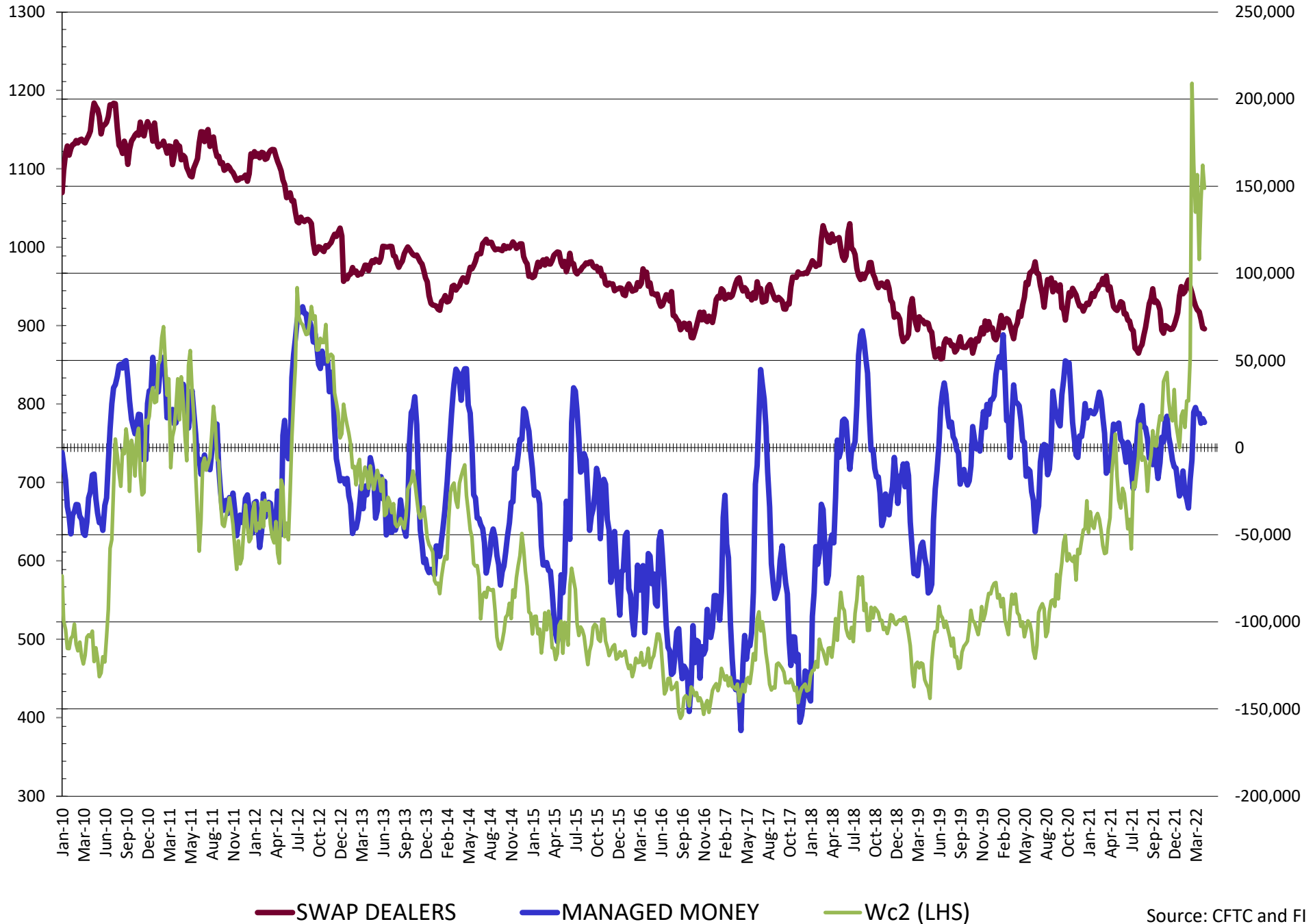


— SWAP DEALERS

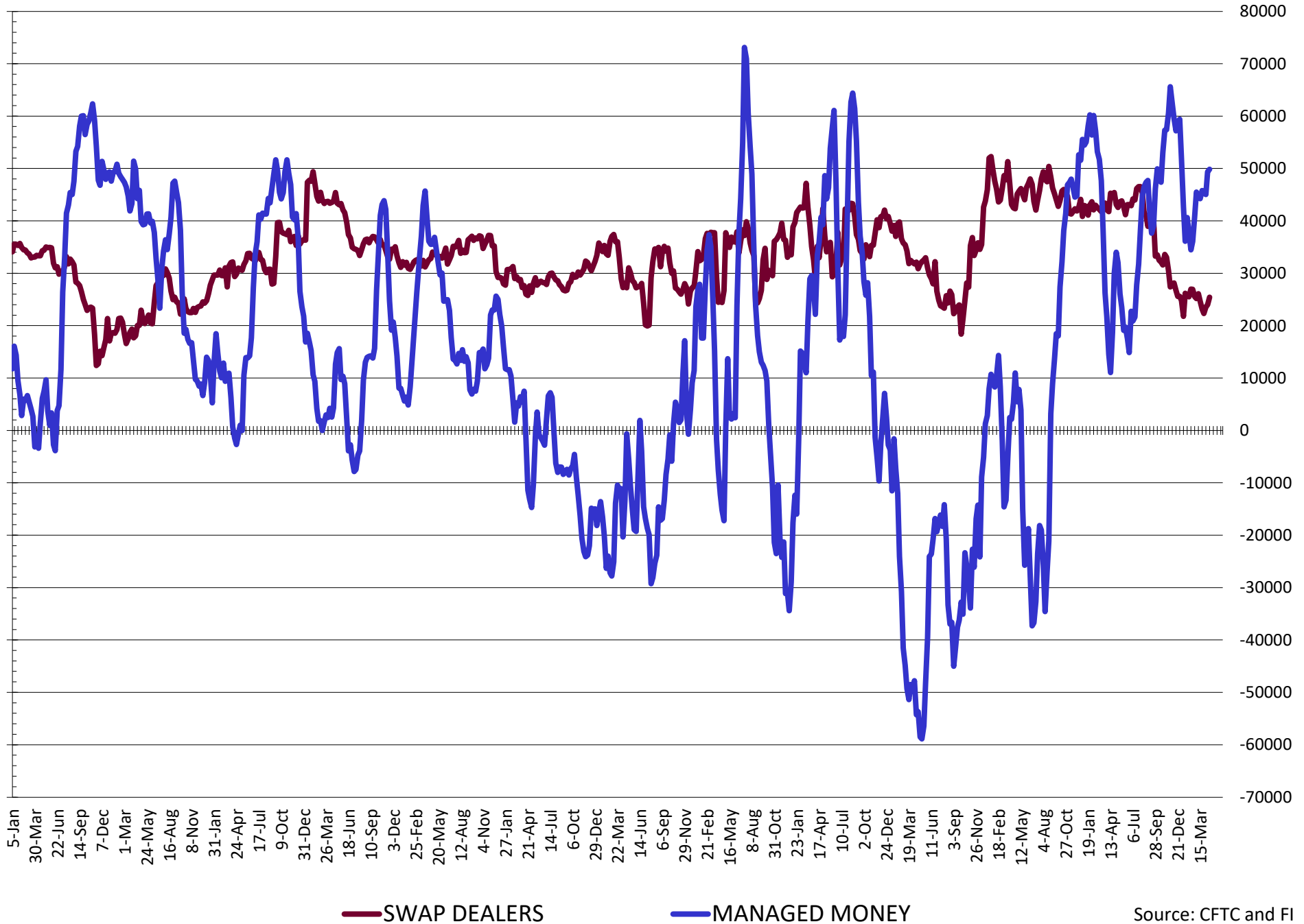
— MANAGED MONEY

— Cc2 (LHS)

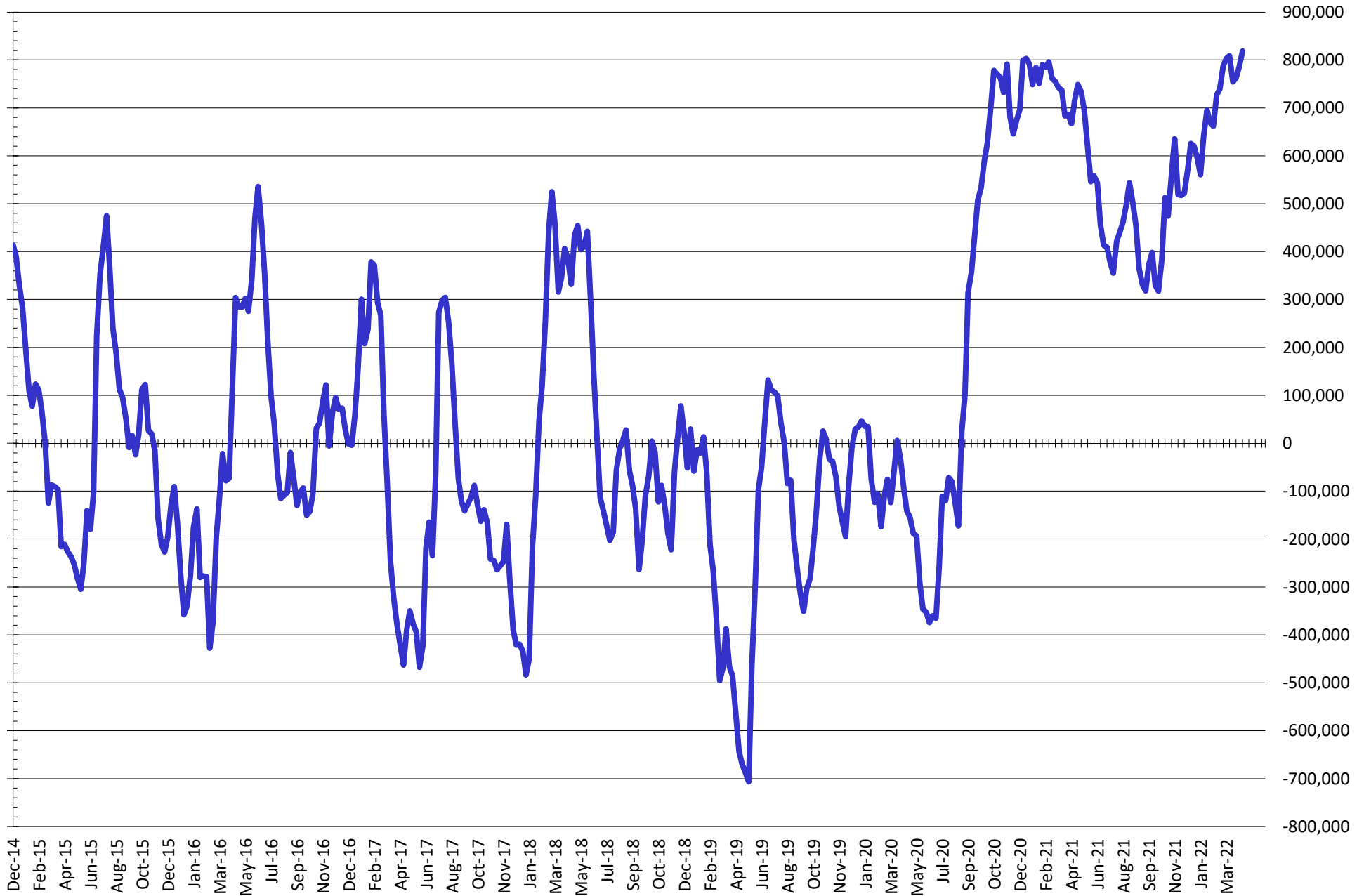
# NET POSITION FUTURES AND OPTIONS OF SWAP AND MANAGED FUNDS IN CHICAGO WHEAT



# NET POSITION FUTURES AND OPTIONS OF SWAP DEALERS AND MANAGED FUNDS IN KANSAS WHEAT



# NET POSITION FUTURES AND OPTIONS OF SWAP AND MANAGED FUNDS IN COMBINED SRW, HRW, CORN, SOYBEANS, SOYMEAL AND SOYOIL



— Net Managed Money

Source: CFTC and FI  
4/22/2022

**COMMITMENT OF TRADERS**  
**FUTURES & OPTIONS NET POSITIONS (INDEX BROKEN OUT)**  
**AS OF 04/19/2022**  
(IN THOUSAND CONTRACTS)

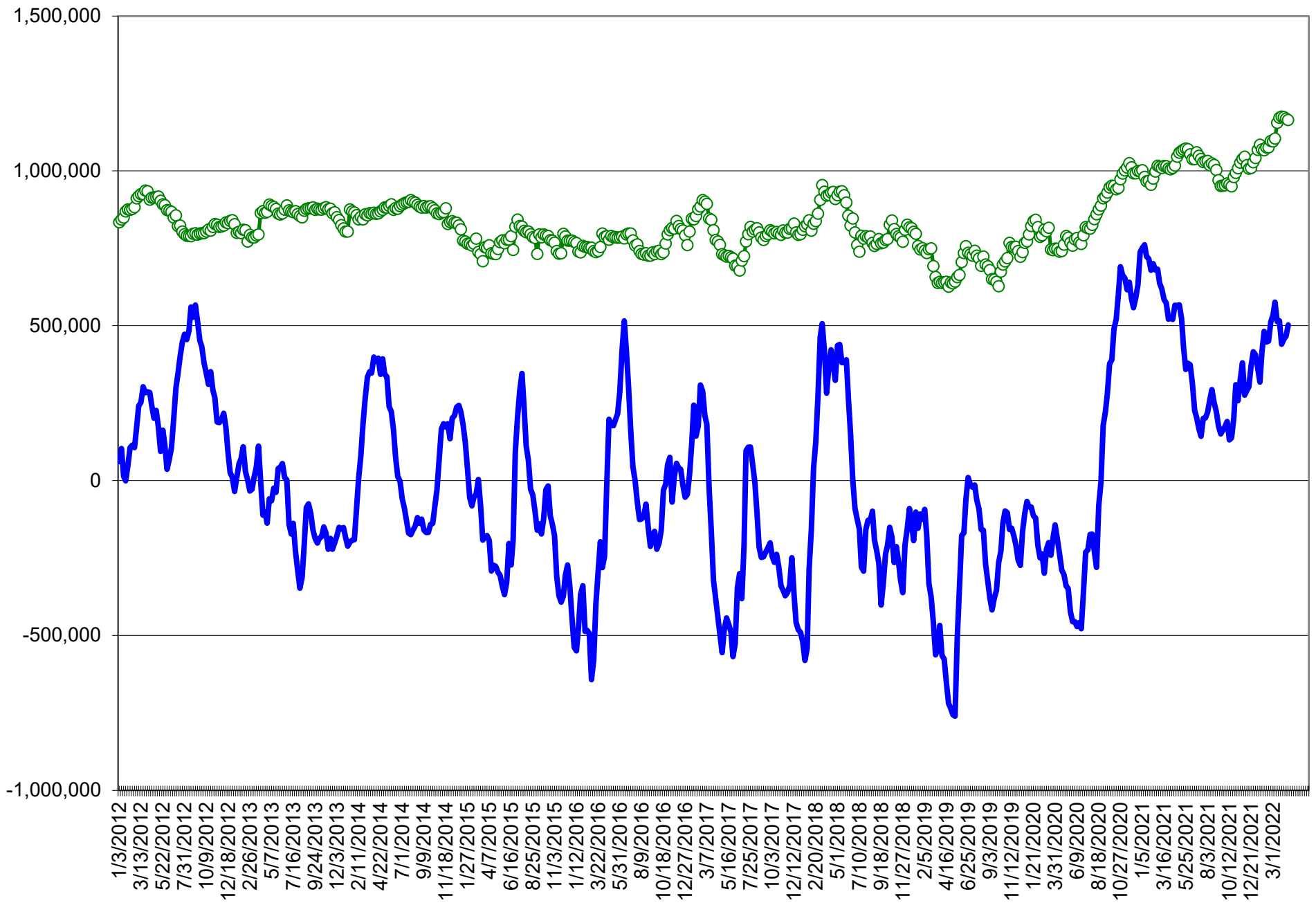
	COMMERCIAL				(FUND) NON COMMERCIAL				(SPEC) NON-REPORTABLE			
	19-Apr	12-Apr	5-Apr	29-Mar	19-Apr	12-Apr	5-Apr	29-Mar	19-Apr	12-Apr	5-Apr	29-Mar
	WHEAT											
Chicago	(120.1)	(121.6)	(121.0)	(118.6)	(38.0)	(37.0)	(37.7)	(43.2)	(2.7)	(2.5)	(4.8)	(4.4)
Kansas City	(81.5)	(80.8)	(78.8)	(79.3)	16.0	15.7	14.2	15.8	2.4	2.2	0.8	0.2
Minneapolis	-	-	-	-	-	-	-	-	-	-	-	-
All Wheat	(201.5)	(202.4)	(199.8)	(197.9)	(22.0)	(21.3)	(23.5)	(27.4)	(0.3)	(0.3)	(3.9)	(4.3)
CORN	(741.2)	(726.2)	(712.0)	(701.7)	286.0	271.1	266.0	261.3	(31.0)	(36.6)	(47.7)	(45.2)
OATS	-	-	-	-	-	-	-	-	-	-	-	-
SOYBEANS	(290.1)	(279.6)	(274.6)	(276.8)	103.6	97.9	93.6	93.5	(25.1)	(27.2)	(29.1)	(29.6)
SOY OIL	(204.5)	(194.4)	(181.6)	(179.0)	64.5	55.2	49.4	47.8	22.7	21.3	15.3	15.2
SOY MEAL	(231.2)	(225.1)	(229.9)	(228.5)	70.5	63.5	70.2	65.2	35.8	35.7	33.8	32.4

	TOTAL OPEN INTEREST				(INDEX) COMMERCIAL INDEX TRADERS				(INDEX) % NET OF TOTAL OPEN INTEREST			
	19-Apr	12-Apr	5-Apr	29-Mar	19-Apr	12-Apr	5-Apr	29-Mar	19-Apr	12-Apr	5-Apr	29-Mar
	WHEAT											
Chicago	484,604	486,821	480,453	471,606	160.8	161.2	163.5	166.2	33.2%	33.1%	34.0%	35.2%
Kansas City	211,504	210,439	208,282	204,327	63.1	62.9	63.8	63.4	29.8%	29.9%	30.6%	31.0%
Minneapolis	-	-	-	-	-	-	-	-	-	-	-	-
All Wheat	696,108	697,260	688,735	675,933	223.9	224.0	227.3	229.6	32.2%	32.1%	33.0%	34.0%
CORN	2,363,241	2,263,395	2,170,866	2,062,031	486.3	491.7	493.7	485.5	20.6%	21.7%	22.7%	23.5%
OATS	-	-	-	-	-	-	-	-	-	-	-	-
SOYBEANS	1,005,019	984,410	979,037	982,306	211.7	208.9	210.1	212.9	21.1%	21.2%	21.5%	21.7%
SOY OIL	471,333	432,997	410,957	400,221	117.4	117.9	116.9	116.0	24.9%	27.2%	28.4%	29.0%
SOY MEAL	466,468	461,136	460,780	455,338	124.9	125.9	126.0	130.8	26.8%	27.3%	27.3%	28.7%

SOURCE: CFTC & FI



# NET POSITION FUTURES AND OPTIONS OF SPECULATORS AND INDEX FUNDS IN COMBINED SRW, HRW, CORN, SOYBEANS, SOYMEAL AND SOYOIL



Source: CFTC and FI

○ Net Index      — Net Speculator

## Traditional Daily Estimate of Funds 4/19/22

	(Neg)-"Short"	Pos-"Long"			
Actual less Est.	(11.0)	(14.2)	(0.7)	3.5	(4.1)
	<b>Corn</b>	<b>Bean</b>	<b>Chi. Wheat</b>	<b>Meal</b>	<b>Oil</b>
Actual	500.6	200.1	23.2	122.8	105.2
20-Apr	10.0	8.0	(6.0)	5.0	2.0
21-Apr	(14.0)	2.0	(11.0)	(2.0)	3.0
22-Apr	(6.0)	(15.0)	(2.0)	(9.0)	5.0
25-Apr					
26-Apr					
<b>FI Est. of Futures Only 4/19/22</b>	<b>490.6</b>	<b>195.1</b>	<b>4.2</b>	<b>116.8</b>	<b>115.2</b>
<b>FI Est. Futures &amp; Options</b>	<b>470.2</b>	<b>188.7</b>	<b>9.0</b>	<b>109.4</b>	<b>111.3</b>
Futures only record long "Traditional Funds"	547.7 1/26/2021	280.9 11/10/2020	86.5 8/7/2018	167.5 5/1/2018	160.2 11/1/2016
Futures only record short	(235.0) 6/9/2020	(118.3) 4/30/2019	(130.0) 4/25/2017	(49.5) 3/1/2016	(69.8) 9/18/2018
Futures and options record net long	557.6 1/12/2021	270.9 10/6/2020	64.8 8/7/2012	132.1 5/1/2018	159.2 1/1/2016
Futures and options record net short	(270.6) 4/26/2019	(132.0) 4/30/2019	(143.3) 4/25/2017	(64.1) 3/1/2016	(77.8) 9/18/2018

## Managed Money Daily Estimate of Funds 4/19/22

	Corn	Bean	Chi. Wheat	Meal	Oil
Latest CFTC Fut. Only	362.9	171.4	14.7	99.3	97.1
Latest CFTC F&O	379.1	179.7	14.5	99.5	96.1
	Corn	Bean	Chi. Wheat	Meal	Oil
FI Est. Managed Fut. Only	353	166	(4)	93	107
FI Est. Managed Money F&O	369	175	(5)	94	106

## Index Funds Latest Positions (as of last Tuesday)

Index Futures & Options	486.3	211.7	160.8	NA	117.4
Change From Previous Week	(5.4)	2.8	(0.4)	NA	(0.6)

Source: Reuters, CFTC & FI (FI est. are noted with latest date)

# Disclaimer

TO CLIENTS/PROSPECTS OF FUTURES INTERNATIONAL, SEE RISK DISCLOSURE BELOW:

THIS COMMUNICATION IS CONVEYED AS A SOLICITATION FOR ENTERING INTO A DERIVATIVES TRANSACTION.

Any trading recommendations and market or other information to Customer by Futures International (FI), although based upon information obtained from sources believed by FI to be reliable may not be accurate and may be changed without notice to customer. FI makes no guarantee as to the accuracy or completeness of any of the information or recommendations furnished to Customer. Customer understands that FI, its managers, employees and/or affiliates may have a position in commodity futures, options or other derivatives which may not be consistent with the recommendations furnished by FI to Customer.

The risk of trading futures and options and other derivatives involves a substantial risk of loss and is not suitable for all persons. In purchasing an option, the risk is limited to the premium paid, and all commissions and fees involved with the trade. When an option is shorted or written, the writer of the option has unlimited risk with respect to the option written. The use of options strategies such as a straddles and strangles involve multiple option positions and may substantially increase the amount of commissions and fees paid to execute the strategy. Option prices do not necessarily move in tandem with cash or futures prices. Each person must consider whether a particular trade, combination of trades or strategy is suitable for that person's financial means and objectives.

This material may include discussions of seasonal patterns, however, futures prices have already factored in the seasonal aspects of supply and demand, and seasonal patterns are no indication of future market trends. Finally, past performance is not indicative of future results.

This communication may contain links to third party websites which are not under the control of FI and FI is not responsible for their content. Products and services are offered only in jurisdictions where solicitation and sale are lawful, and in accordance with applicable laws and regulations in each such jurisdiction.