

CFTC COMMITMENT OF TRADERS REPORT

As of 4/26/2022

TRADITIONAL FUNDS net position changes

Wed to Tue, in 000 contracts

	Corn	Bean	Meal	Oil	Chi. Wheat	KC Wheat	Min Wheat
Futures Only	(3.0)	3.7	(6.5)	1.7	(1.6)	(3.9)	(1.3)
Futures & Options Combined	(15.9)	(9.1)	(8.9)	3.9	(1.7)	(4.0)	(1.6)

TRADITIONAL COMMERCIAL net position changes

	Corn	Bean	Meal	Oil	Chi. Wheat	KC Wheat	Min Wheat
Futures Only	9.0	(2.9)	12.7	3.5	3.0	2.5	0.8
Futures & Options Combined	22.5	10.7	15.5	1.6	3.1	2.8	1.0

MANAGED MONEY net position changes

	Corn	Bean	Meal	Oil	Chi. Wheat	KC Wheat	Min Wheat
Futures Only	(24.3)	(4.7)	(8.3)	(0.8)	0.2	(5.1)	(1.6)
Futures & Options Combined	(18.5)	(6.2)	(8.3)	1.6	(0.3)	(4.4)	(1.6)

SWAP DEALERS net position changes

	Corn	Bean	Meal	Oil	Chi. Wheat	KC Wheat	Min Wheat
Futures Only	(9.1)	(5.4)	(0.5)	(2.4)	(0.3)	3.1	0.7
Futures & Options Combined	(0.7)	(0.4)	1.0	(1.4)	0.4	2.3	0.6

PRODUCERS/END USERS net position changes

	Corn	Bean	Meal	Oil	Chi. Wheat	KC Wheat	Min Wheat
Futures Only	18.1	2.4	13.2	5.9	3.4	(0.6)	0.1
Futures & Options Combined	23.3	11.2	14.5	3.0	2.7	0.5	0.4

INDEX net position changes

	Corn	Bean	Meal	Oil	Chi. Wheat	KC Wheat	Min Wheat
Futures & Options Combined	(0.6)	(12.2)	(2.6)	(0.4)	(2.5)	2.3	NA

SUPPLEMENTAL NON-COMMERCIAL net position changes

	Corn	Bean	Meal	Oil	Chi. Wheat	KC Wheat	Min Wheat
Futures & Options Combined	(13.7)	(5.8)	(6.2)	4.7	0.5	(4.1)	NA

OPEN INTEREST net position changes

Wed to Tue, in 000 contracts

	Corn	Bean	Meal	Oil	Chi. Wheat	KC Wheat	Min Wheat
Futures Only	(99.3)	(36.1)	(19.9)	(13.9)	(11.4)	(3.7)	(2.5)
Futures & Options Combined	(205.7)	(100.3)	(42.0)	(30.5)	(53.4)	(16.1)	(4.3)

Source: CFTC and FI

Wed to Tue, in 000 contracts

**COMMITMENT OF TRADERS
FUTURES ONLY NET POSITIONS
AS OF 04/26/2022
(IN THOUSAND CONTRACTS)**

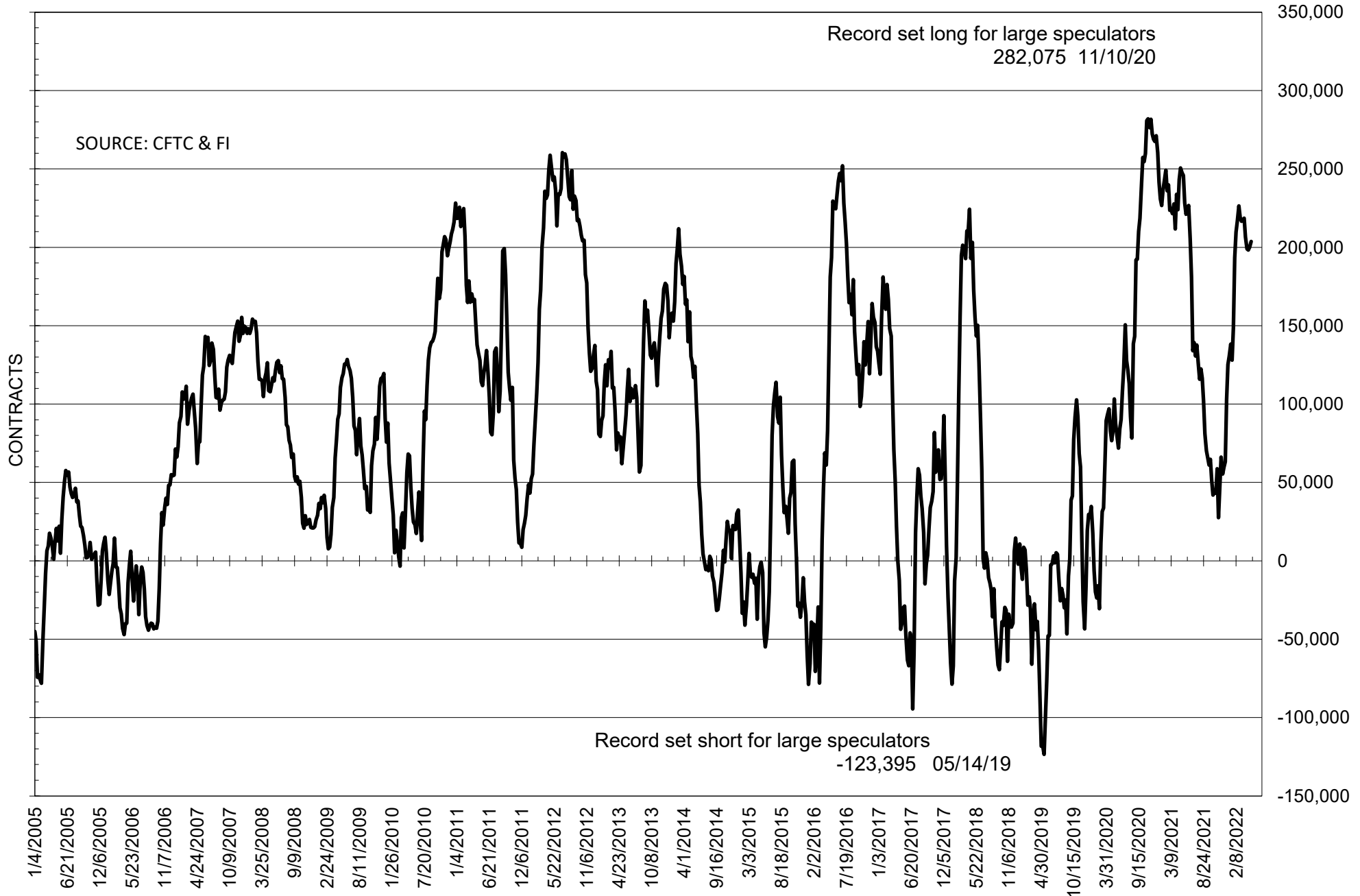
	COMMERCIAL				(FUND) NON COMMERCIAL				(SPEC) NON-REPORTABLE			
	26-Apr	19-Apr	12-Apr	5-Apr	26-Apr	19-Apr	12-Apr	5-Apr	26-Apr	19-Apr	12-Apr	5-Apr
	WHEAT											
Chicago	-17.4	-20.4	-21.3	-15.3	21.7	23.2	23.9	20.0	-4.3	-2.8	-2.6	-4.6
Kansas City	-44.1	-46.6	-45.4	-44.0	40.4	44.3	43.3	43.1	3.7	2.3	2.1	0.9
Minneapolis	-29.1	-29.8	-27.2	-26.1	23.9	25.2	23.0	22.5	5.2	4.6	4.2	3.6
All Wheat	-90.6	-96.9	-93.8	-85.5	86.0	92.7	90.2	85.5	4.6	4.2	3.7	-0.1
CORN	-447.3	-456.3	-443.7	-424.2	497.6	500.6	495.6	487.1	-50.4	-44.3	-51.9	-62.9
OATS	#VALUE!	#VALUE!	#VALUE!	#VALUE!	#VALUE!	#####	#VALUE!	#VALUE!	#VALUE!	#VALUE!	#VALUE!	#VALUE!
SOYBEANS	-177.8	-174.9	-170.7	-170.9	203.8	200.1	198.3	198.9	-26.0	-25.2	-27.6	-28.0
SOY OIL	-123.9	-127.4	-119.1	-105.2	107.0	105.2	98.3	89.5	16.9	22.2	20.8	15.7
SOY MEAL	-142.1	-154.8	-148.2	-154.0	116.3	122.8	116.3	123.8	25.8	32.0	32.0	30.2

Oats positions thin to be reported

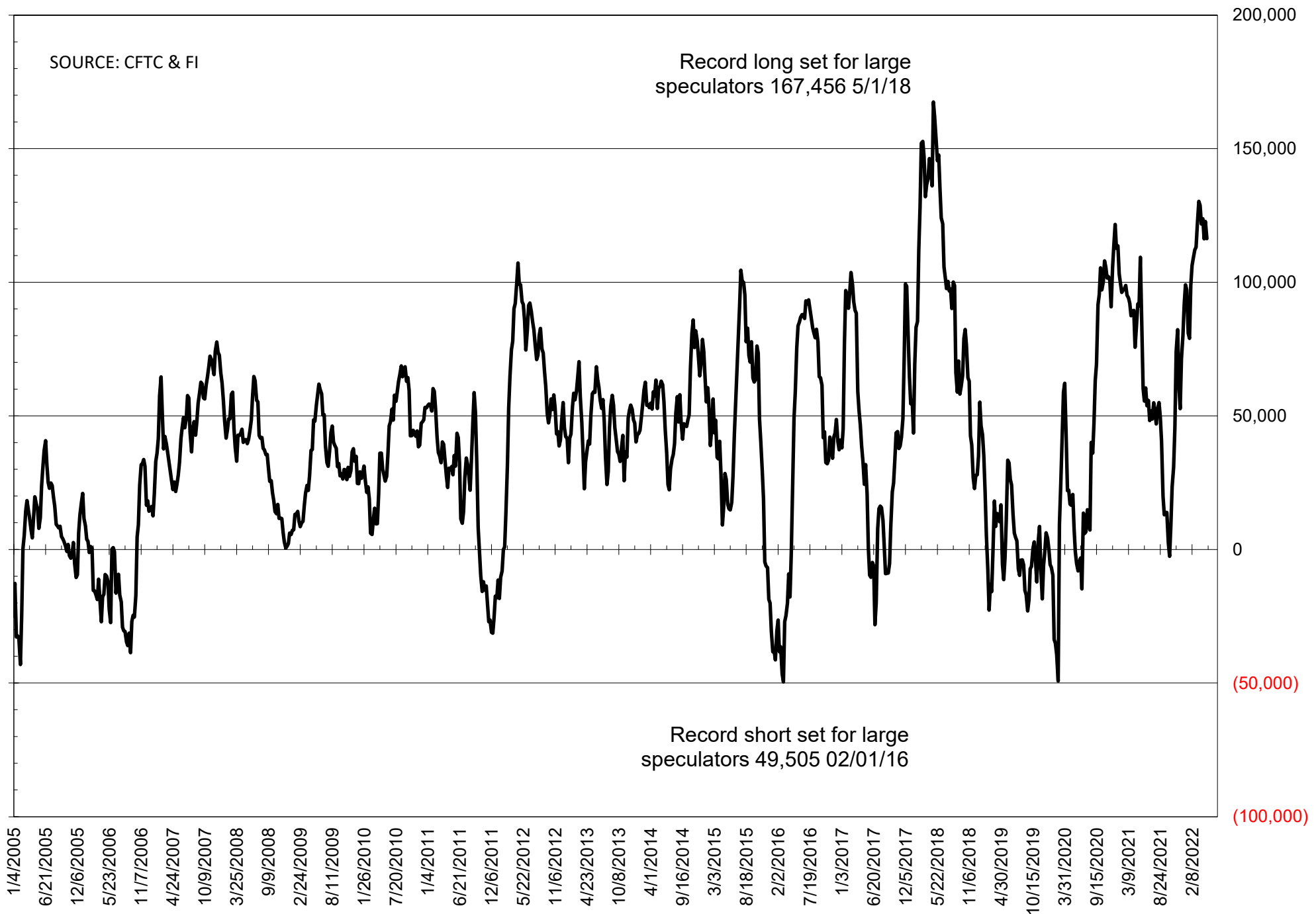
	TOTAL OPEN INTEREST				NEARBY FUTURES PRICE					26-Apr-22 LAST REPORTED % HELD BY TRADERS			
	26-Apr	19-Apr	12-Apr	5-Apr	K Latest	K 26-Apr	K 19-Apr	K 12-Apr	K 5-Apr	LARGE FUND		SMALL	
										LONG	SHORT	LONG	SHORT
WHEAT													
Chicago	325594	337038	338271	344615	1043.75	1083.25	1099.00	1103.75	1045.25	0%	28%	0%	10%
Kansas City	173692	177370	175900	178149	1094.25	1157.75	1171.50	1162.25	1082.75	0%	13%	0%	10%
Minneapolis	71085	73573	72508	67661	1176.25	1184.75	1167.50	1153.25	1108.75	0%	2%	0%	15%
CORN	1525877	1625198	1589848	1556206	818.25	803.25	804.00	776.25	759.75	0%	5%	0%	13%
OATS	#VALUE!	#VALUE!	#VALUE!	#VALUE!	675.50	694.00	746.50	807.00	745.25	0%	#VALUE!	0%	#VALUE!
SOYBEANS	726717	762855	752157	756785	1708.25	1705.25	1716.50	1670.25	1631.00	34%	6%	7%	11%
SOY OIL	380147	394049	364457	349547	89.17	85.29	80.21	75.43	72.41	0%	6%	0%	5%
SOY MEAL	383905	403773	397955	399314	440.50	444.80	464.40	460.90	465.90	0%	4%	0%	6%

SOURCE: CFTC & FI

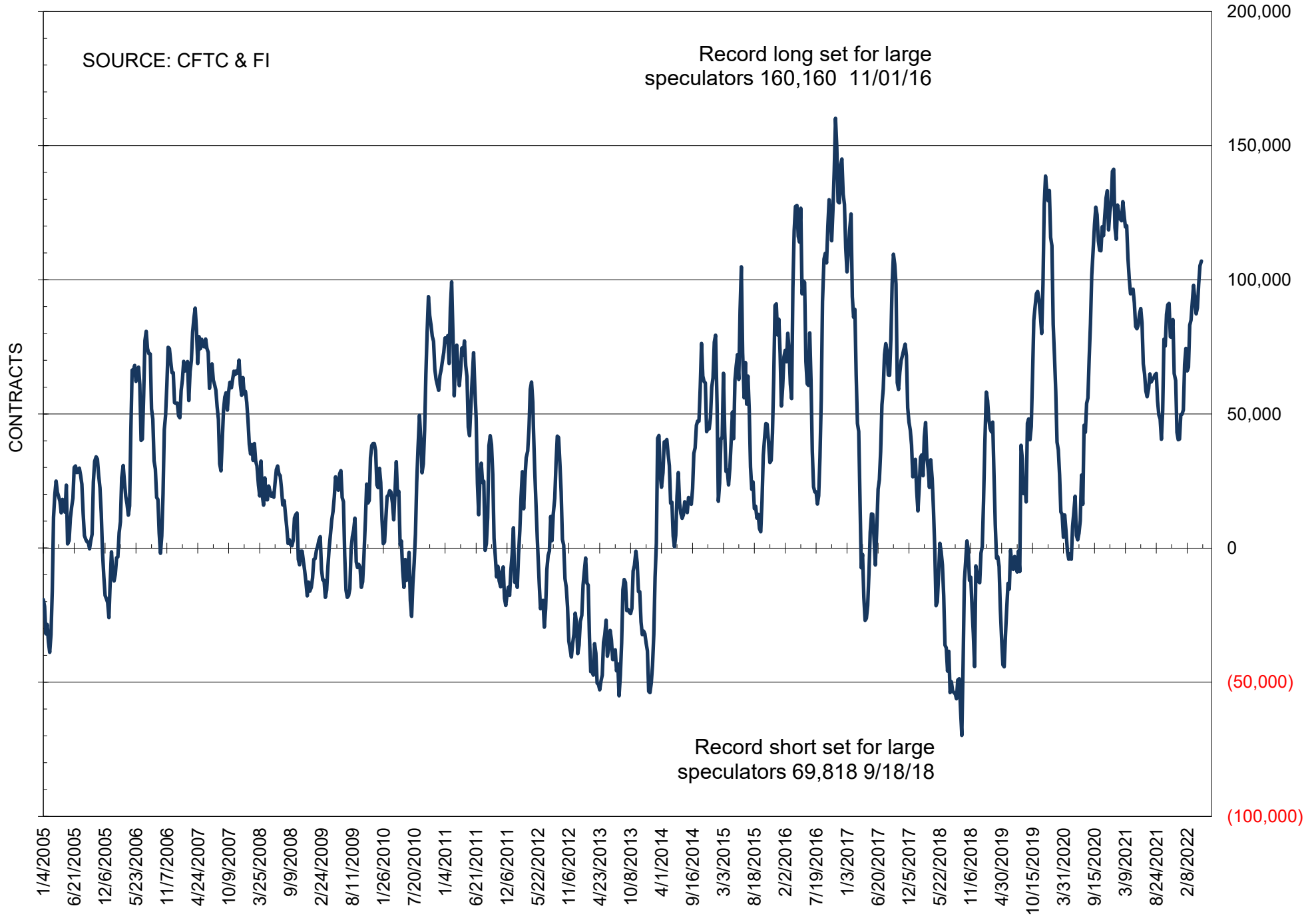
NET POSITION OF FUTURES ONLY LARGE SPECS IN SOYBEANS



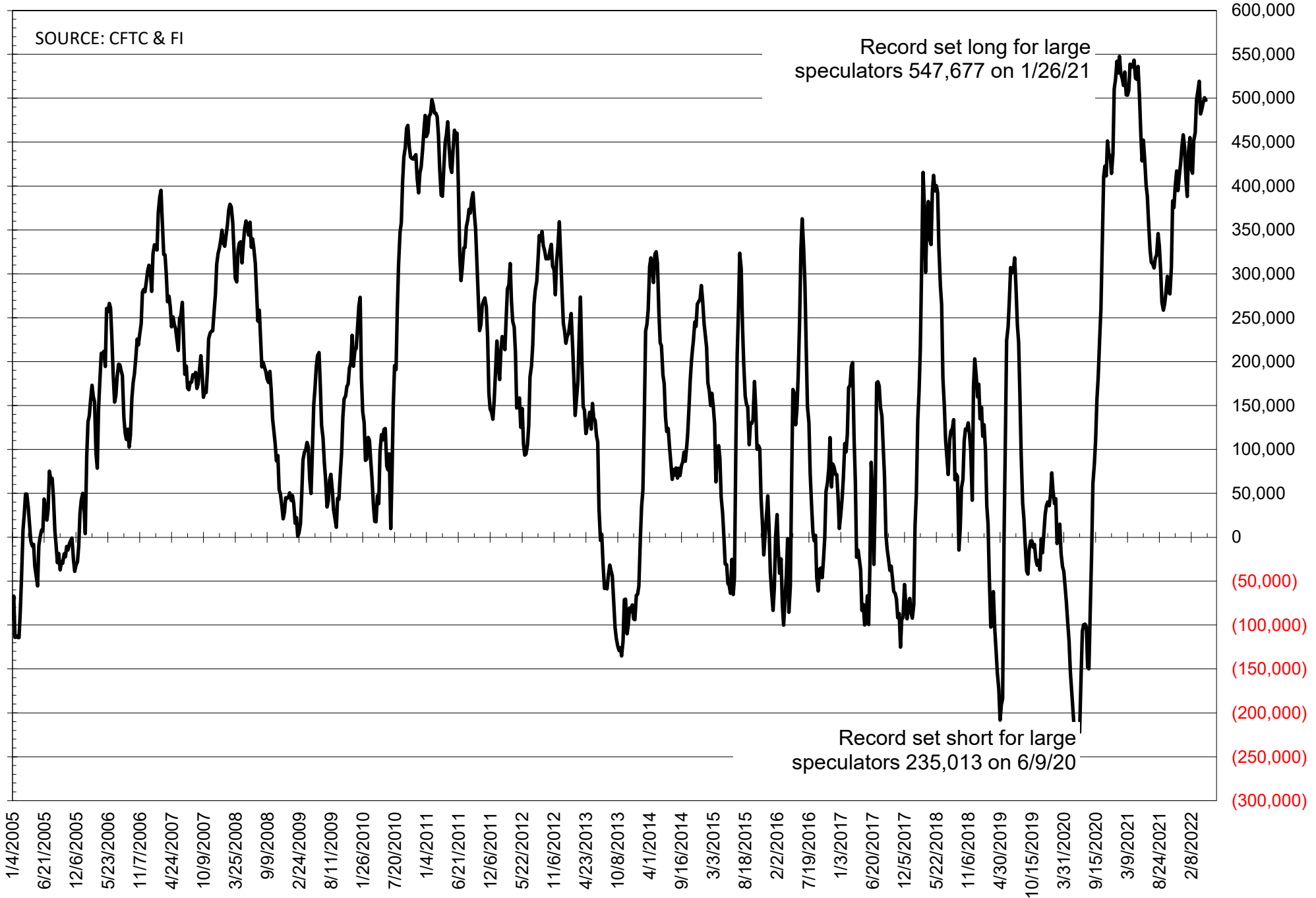
NET POSITION OF FUTURES ONLY LARGE SPECS IN SOYMEAL



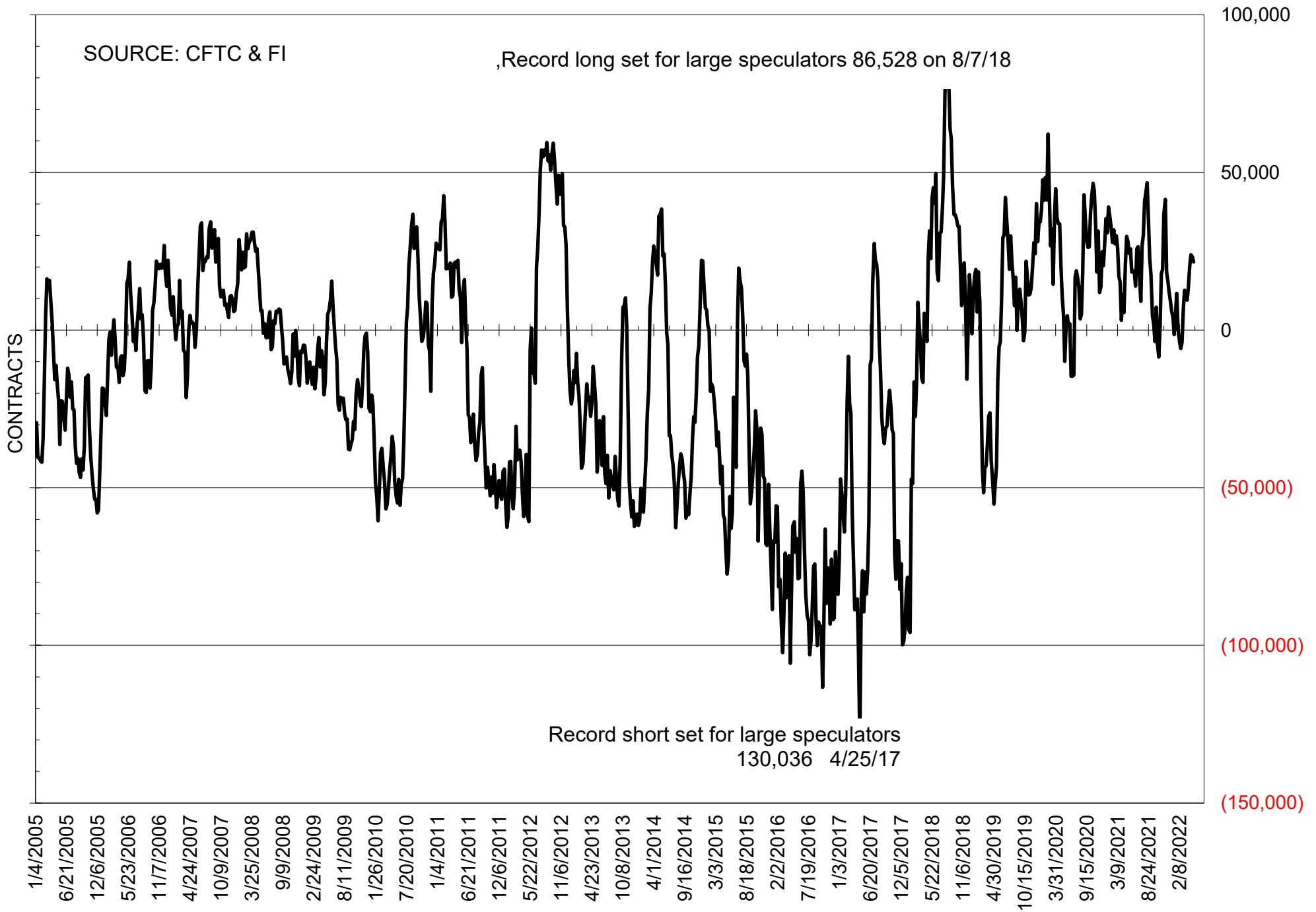
NET POSITION OF FUTURES ONLY LARGE SPECS IN SOYOIL



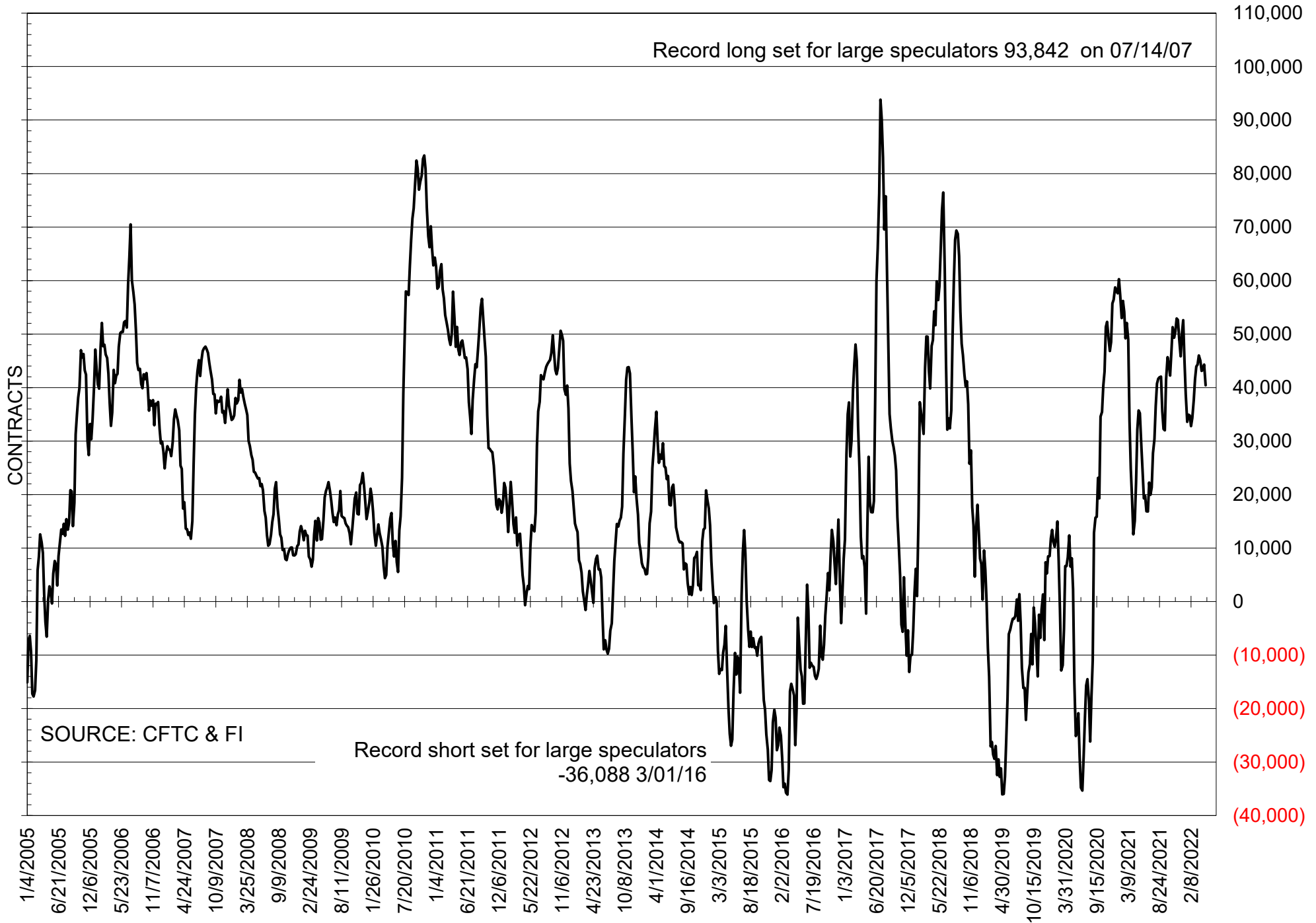
NET POSITION OF LARGE SPECULATORS IN CORN



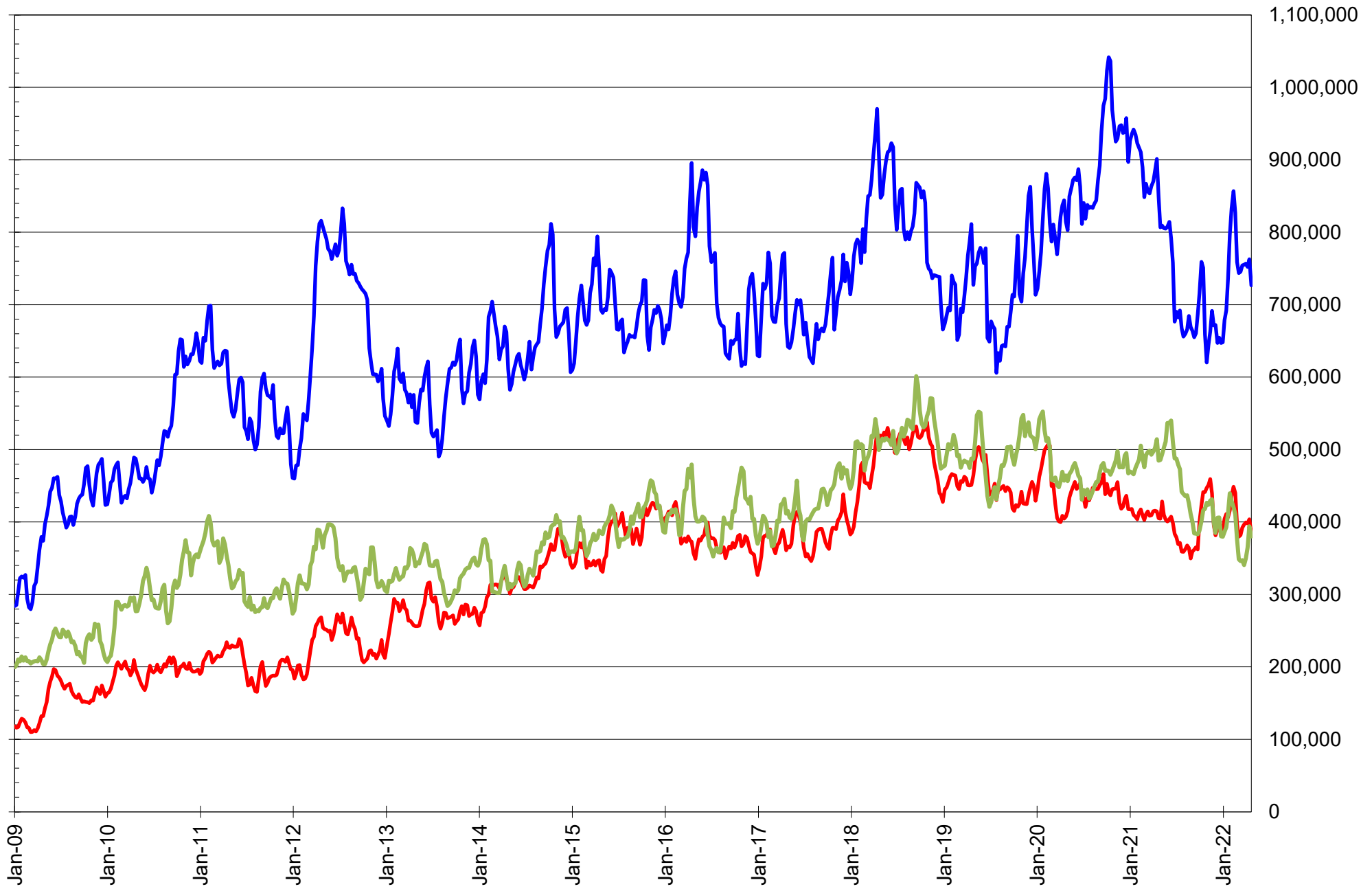
NET POSITION OF FUTURES ONLY LARGE SPECS IN CHICAGO WHEAT



NET POSITION OF LARGE SPECULATORS IN KANSAS CITY WHEAT



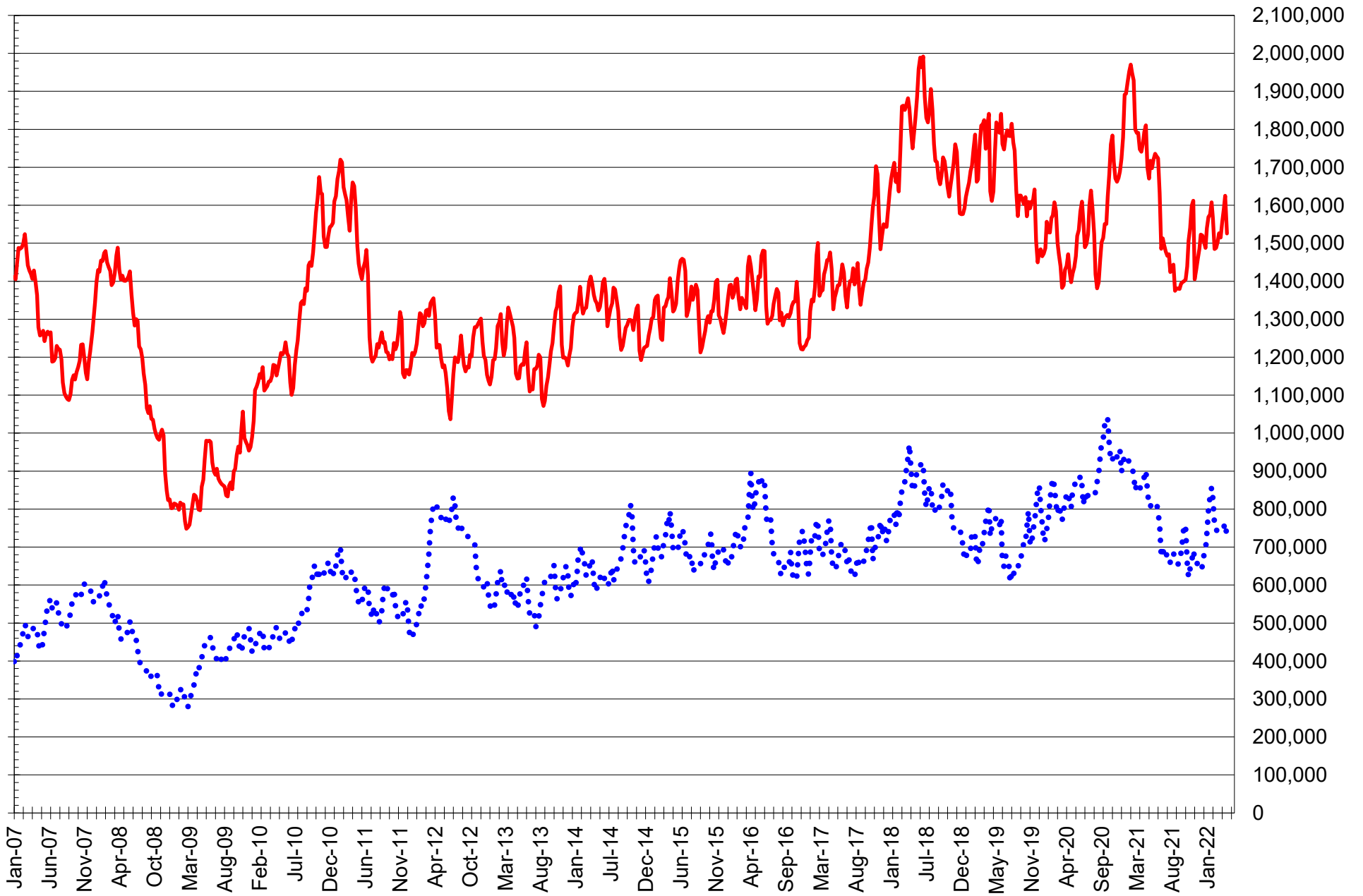
TOTAL OPEN INTEREST IN SOYBEANS, MEAL AND OIL, FUTURES ONLY



SOURCE: CFTC & FI

— SOYBEANS — SOYBEAN MEAL — SOYBEAN OIL

TOTAL OPEN INTEREST IN CORN AND SOYBEANS, FUTURES ONLY



SOURCE: CFTC & FI

— CORN

..... SOYBEANS

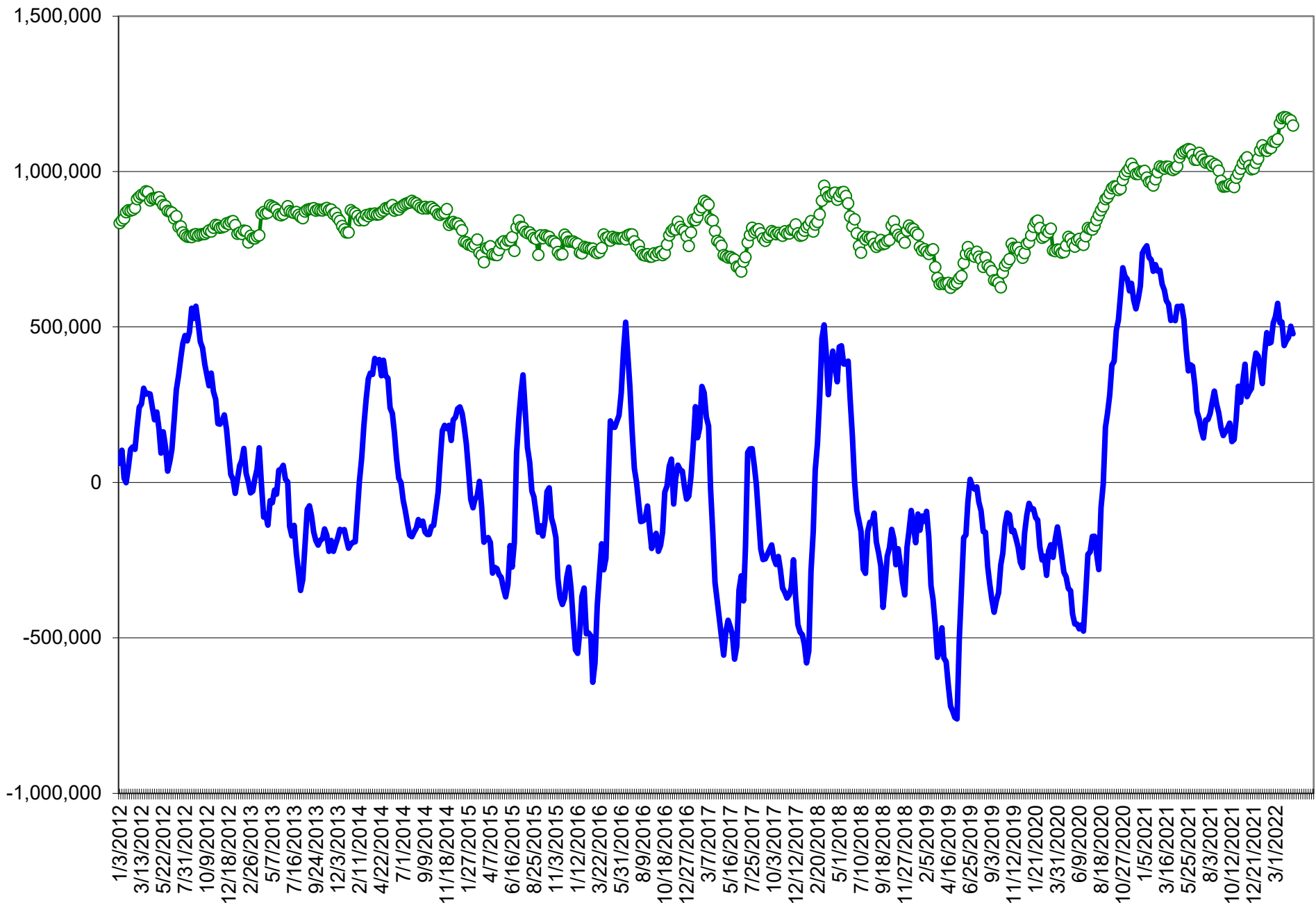
COMMITMENT OF TRADERS
FUTURES & OPTIONS NET POSITIONS (INDEX BROKEN OUT)
AS OF 04/26/2022
(IN THOUSAND CONTRACTS)

	COMMERCIAL				(FUND) NON COMMERCIAL				(SPEC) NON-REPORTABLE			
	26-Apr	19-Apr	12-Apr	5-Apr	26-Apr	19-Apr	12-Apr	5-Apr	26-Apr	19-Apr	12-Apr	5-Apr
	WHEAT											
Chicago	(116.8)	(120.1)	(121.6)	(121.0)	(37.5)	(38.0)	(37.0)	(37.7)	(4.0)	(2.7)	(2.5)	(4.8)
Kansas City	(80.8)	(81.5)	(80.8)	(78.8)	11.9	16.0	15.7	14.2	3.5	2.4	2.2	0.8
Minneapolis	-	-	-	-	-	-	-	-	-	-	-	-
All Wheat	(197.6)	(201.5)	(202.4)	(199.8)	(25.6)	(22.0)	(21.3)	(23.5)	(0.5)	(0.3)	(0.3)	(3.9)
CORN	(720.2)	(741.2)	(726.2)	(712.0)	272.2	286.0	271.1	266.0	(37.7)	(31.0)	(36.6)	(47.7)
OATS	-	-	-	-	-	-	-	-	-	-	-	-
SOYBEANS	(270.5)	(290.1)	(279.6)	(274.6)	97.8	103.6	97.9	93.6	(26.8)	(25.1)	(27.2)	(29.1)
SOY OIL	(203.3)	(204.5)	(194.4)	(181.6)	69.2	64.5	55.2	49.4	17.2	22.7	21.3	15.3
SOY MEAL	(215.8)	(231.2)	(225.1)	(229.9)	64.3	70.5	63.5	70.2	29.2	35.8	35.7	33.8

	TOTAL OPEN INTEREST				(INDEX) COMMERCIAL INDEX TRADERS				(INDEX) % NET OF TOTAL OPEN INTEREST			
	26-Apr	19-Apr	12-Apr	5-Apr	26-Apr	19-Apr	12-Apr	5-Apr	26-Apr	19-Apr	12-Apr	5-Apr
	WHEAT											
Chicago	431,253	484,604	486,821	480,453	158.3	160.8	161.2	163.5	36.7%	33.2%	33.1%	34.0%
Kansas City	195,409	211,504	210,439	208,282	65.4	63.1	62.9	63.8	33.5%	29.8%	29.9%	30.6%
Minneapolis	-	-	-	-	-	-	-	-	-	-	-	-
All Wheat	626,662	696,108	697,260	688,735	223.7	223.9	224.0	227.3	35.7%	32.2%	32.1%	33.0%
CORN	2,157,559	2,363,241	2,263,395	2,170,866	485.7	486.3	491.7	493.7	22.5%	20.6%	21.7%	22.7%
OATS	-	-	-	-	-	-	-	-	-	-	-	-
SOYBEANS	904,744	1,005,019	984,410	979,037	199.5	211.7	208.9	210.1	22.0%	21.1%	21.2%	21.5%
SOY OIL	440,799	471,333	432,997	410,957	116.9	117.4	117.9	116.9	26.5%	24.9%	27.2%	28.4%
SOY MEAL	424,438	466,468	461,136	460,780	122.3	124.9	125.9	126.0	28.8%	26.8%	27.3%	27.3%

SOURCE: CFTC & FI

NET POSITION FUTURES AND OPTIONS OF SPECULATORS AND INDEX FUNDS IN COMBINED SRW, HRW, CORN, SOYBEANS, SOYMEAL AND SOYOIL



Source: CFTC and FI

○ Net Index

— Net Speculator

DISAGGREGATED COMMITMENT OF TRADERS
FUTURES ONLY NET POSITIONS
AS OF 04/26/2022
(IN THOUSAND CONTRACTS)

	PRODUCER / MERCHANT / PROCESSOR / USER				(INDEX/ETF) SWAP DEALERS				(CTA/CPO/OTHER UNREGISTERED) MANAGED MONEY				
	26-Apr	19-Apr	12-Apr	5-Apr	26-Apr	19-Apr	12-Apr	5-Apr	26-Apr	19-Apr	12-Apr	5-Apr	
	WHEAT												
Chicago	(88.1)	(91.5)	(92.7)	(91.7)	70.7	71.1	71.5	76.4	15.0	14.7	17.1	14.0	
Kansas City	(72.5)	(71.8)	(69.1)	(67.1)	28.3	25.2	23.7	23.1	44.9	50.0	49.5	45.2	
Minneapolis	(30.3)	(30.4)	(27.7)	(26.4)	1.2	0.5	0.5	0.3	18.3	19.9	18.1	18.3	
All Wheat	(190.9)	(193.7)	(189.6)	(185.2)	100.3	96.8	95.7	99.7	78.1	84.6	84.7	77.4	
CORN	(742.0)	(760.1)	(745.4)	(729.6)	294.8	303.8	301.6	305.5	338.6	362.9	356.9	349.1	
OATS	-	-	-	-	-	-	-	-	-	-	-	-	
SOYBEANS	(293.1)	(295.5)	(291.6)	(295.9)	115.3	120.6	120.9	125.0	166.7	171.4	164.6	156.8	
SOY OIL	(206.9)	(212.8)	(205.9)	(193.5)	83.0	85.4	86.8	88.3	96.2	97.1	84.5	77.2	
SOY MEAL	(232.6)	(245.8)	(239.6)	(244.6)	90.5	91.0	91.4	90.6	90.9	99.3	93.0	99.9	
									Managed % of OI				
									Chicago W	5%	4%	5%	4%
									Corn	22%	22%	22%	22%
	TOTAL OPEN INTEREST				OTHER REPORTABLE				NON REPORTABLE				
	26-Apr	19-Apr	12-Apr	5-Apr	26-Apr	19-Apr	12-Apr	5-Apr	26-Apr	19-Apr	12-Apr	5-Apr	
WHEAT													
Chicago	325,594	337,038	338,271	344,615	6.7	8.5	6.8	6.0	(4.3)	(2.8)	(2.6)	(4.6)	
Kansas City	173,692	177,370	175,900	178,149	(4.5)	(5.7)	(6.2)	(2.1)	3.7	2.3	2.1	0.9	
Minneapolis	71,085	73,573	72,508	67,661	5.6	5.3	4.9	4.2	5.2	4.6	4.2	3.6	
All Wheat	570,371	587,981	586,679	590,425	7.9	8.2	5.5	8.1	4.6	4.2	3.7	(0.1)	
CORN	1,525,877	1,625,198	1,589,848	1,556,206	159.0	137.7	138.7	138.0	(50.4)	(44.3)	(51.9)	(62.9)	
OATS	-	-	-	-	-	-	-	-	-	-	-	-	
SOYBEANS	726,717	762,855	752,157	756,785	37.1	28.7	33.6	42.1	(26.0)	(25.2)	(27.6)	(28.0)	
SOY OIL	380,147	394,049	364,457	349,547	10.7	8.2	13.8	12.3	16.9	22.2	20.8	15.7	
SOY MEAL	383,905	403,773	397,955	399,314	25.4	23.5	23.3	23.9	25.8	32.0	32.0	30.2	

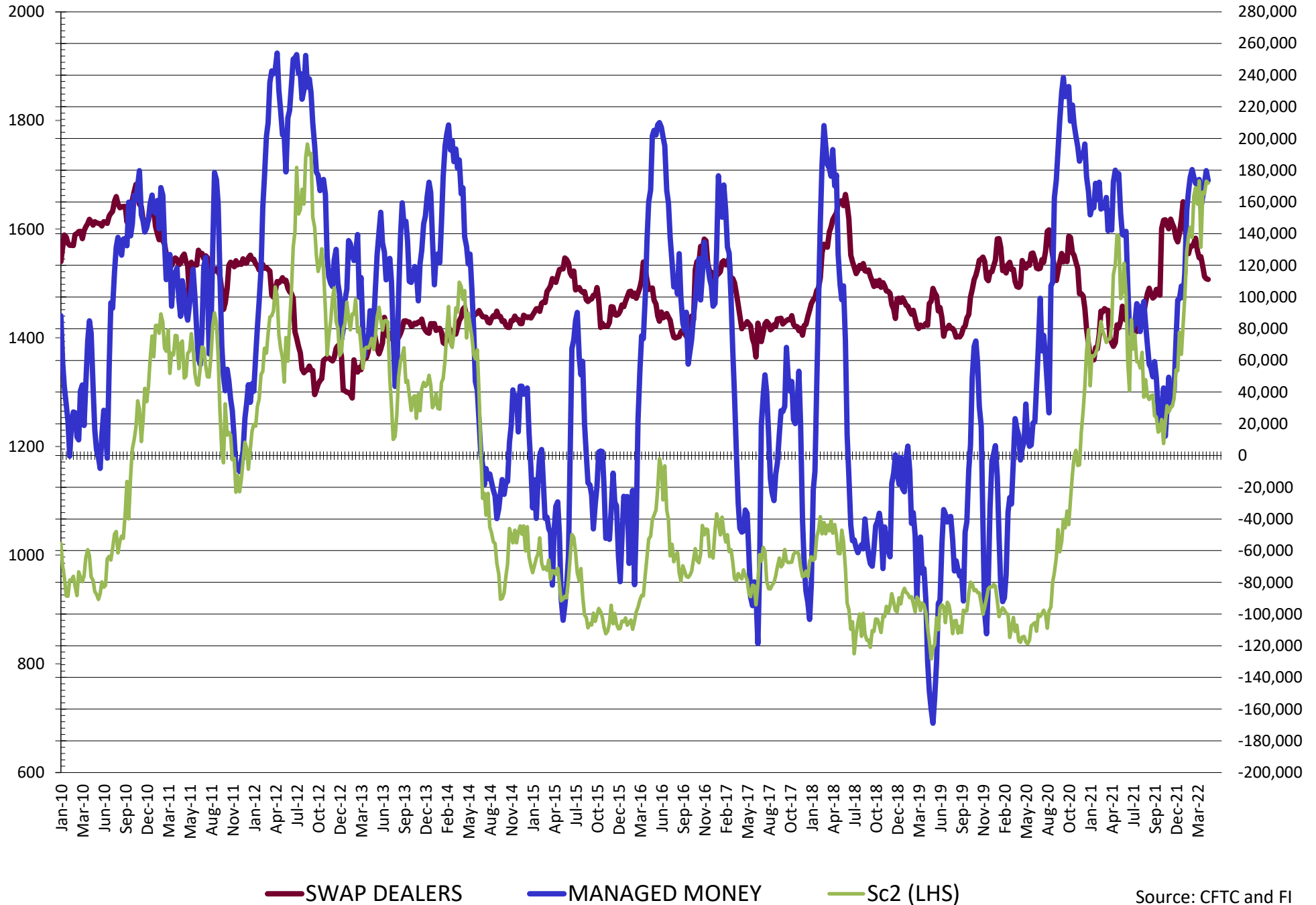
SOURCE: CFTC & FI

**DISAGGREGATED COMMITMENT OF TRADERS
FUTURES & OPTIONS NET POSITIONS
AS OF 04/26/2022
(IN THOUSAND CONTRACTS)**

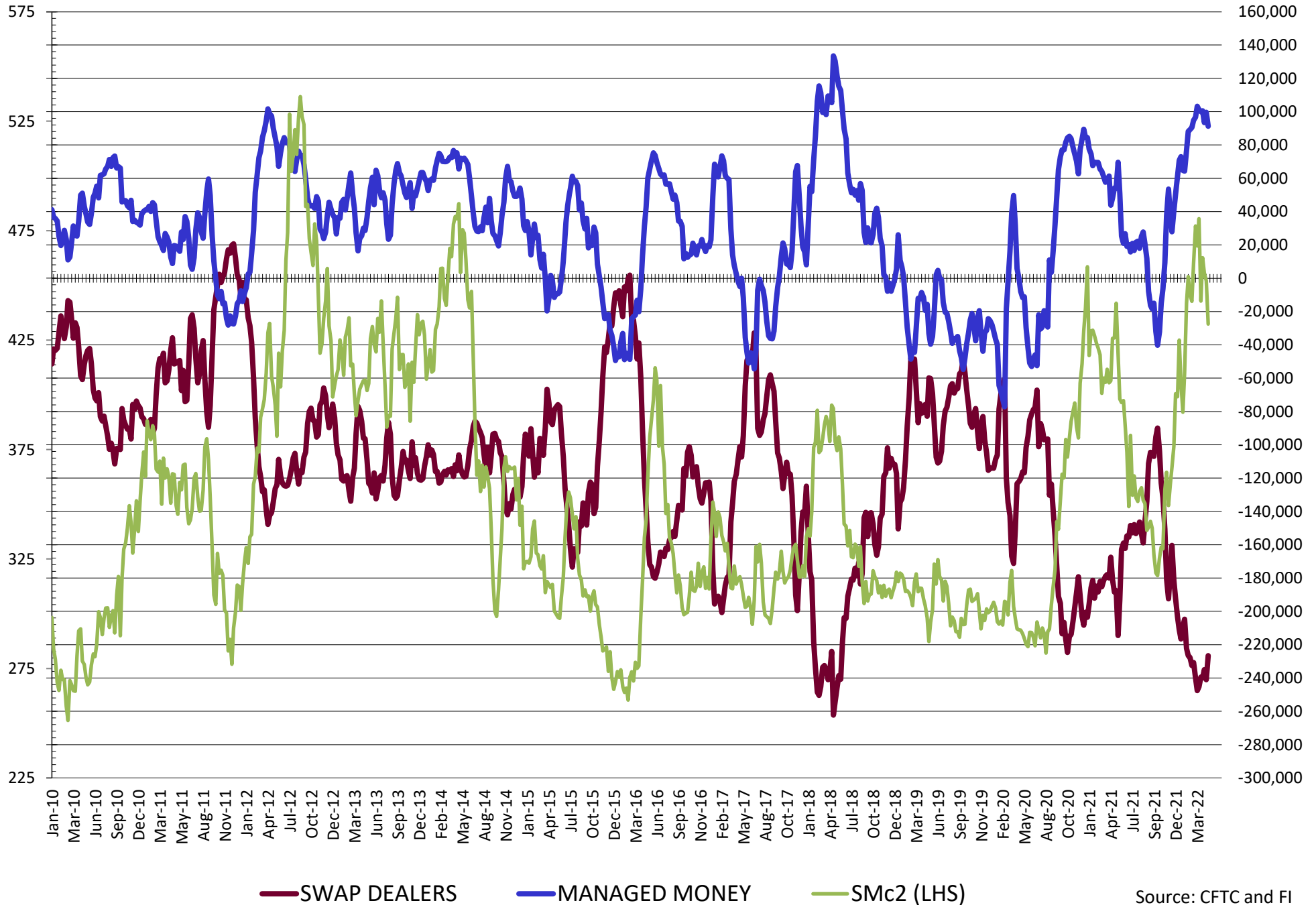
	PRODUCER / MERCHANT / PROCESSOR / USER				(INDEX/ETF) SWAP DEALERS				(CTA/CPO/OTHER UNREGISTERED) MANAGED MONEY			
	26-Apr	19-Apr	12-Apr	5-Apr	26-Apr	19-Apr	12-Apr	5-Apr	26-Apr	19-Apr	12-Apr	5-Apr
	WHEAT											
Chicago	(90.9)	(93.6)	(95.4)	(95.6)	68.6	68.2	68.7	73.8	14.2	14.5	16.6	14.0
Kansas City	(72.9)	(73.5)	(70.8)	(68.9)	27.7	25.4	24.0	23.5	45.4	49.8	49.4	45.0
Minneapolis	(29.9)	(30.3)	(27.5)	(25.9)	1.3	0.6	0.6	0.4	18.3	19.9	18.1	18.3
All Wheat	(193.8)	(197.4)	(193.7)	(190.4)	97.6	94.2	93.3	97.7	77.9	84.2	84.2	77.2
CORN	(711.9)	(735.2)	(714.7)	(700.9)	285.3	286.0	286.1	290.9	360.7	379.1	370.0	362.3
OATS	0.0	0.0	0.0	0.0	0.0	0.0	0.0	0.0	0.0	0.0	0.0	0.0
SOYBEANS	(268.9)	(280.1)	(271.7)	(270.0)	111.1	111.5	112.9	119.0	173.5	179.7	171.9	163.7
SOY OIL	(205.2)	(208.2)	(198.6)	(186.9)	82.8	84.3	85.6	87.0	97.7	96.1	84.1	76.8
SOY MEAL	(226.6)	(241.1)	(235.0)	(240.0)	90.9	89.9	90.3	89.4	91.3	99.5	93.4	100.5
	TOTAL				OTHER REPORTABLE				NON REPORTABLE			
	OPEN INTEREST				SWAP DEALERS				MANAGED MONEY			
	26-Apr	19-Apr	12-Apr	5-Apr	26-Apr	19-Apr	12-Apr	5-Apr	26-Apr	19-Apr	12-Apr	5-Apr
WHEAT												
Chicago	431,253	484,604	486,821	480,453	12.1	13.6	12.6	12.6	(4.0)	(2.7)	(2.5)	(4.8)
Kansas City	195,409	211,504	210,439	208,282	(3.7)	(4.2)	(4.7)	(0.5)	3.5	2.4	2.2	0.8
Minneapolis	73,326	77,613	76,329	71,117	5.1	5.2	4.6	3.7	5.3	4.6	4.2	3.6
All Wheat	699,988	773,721	773,589	759,852	13.6	14.6	12.4	15.8	4.8	4.3	3.9	(0.3)
CORN	2,157,559	2,363,241	2,263,395	2,170,866	103.7	101.1	95.3	95.3	(37.7)	(31.0)	(31.0)	(31.0)
OATS	0	0	0	0	0.0	0.0	0.0	0.0	0.0	0.0	0.0	0.0
SOYBEANS	904,744	1,005,019	984,410	979,037	11.2	14.0	14.2	16.4	(26.8)	(25.1)	(27.2)	(29.1)
SOY OIL	440,799	471,333	432,997	410,957	7.5	5.2	7.7	7.9	17.2	22.7	21.3	15.3
SOY MEAL	424,438	466,468	461,136	460,780	15.2	15.8	15.5	16.2	29.2	35.8	35.7	33.8

SOURCE: CFTC & FI

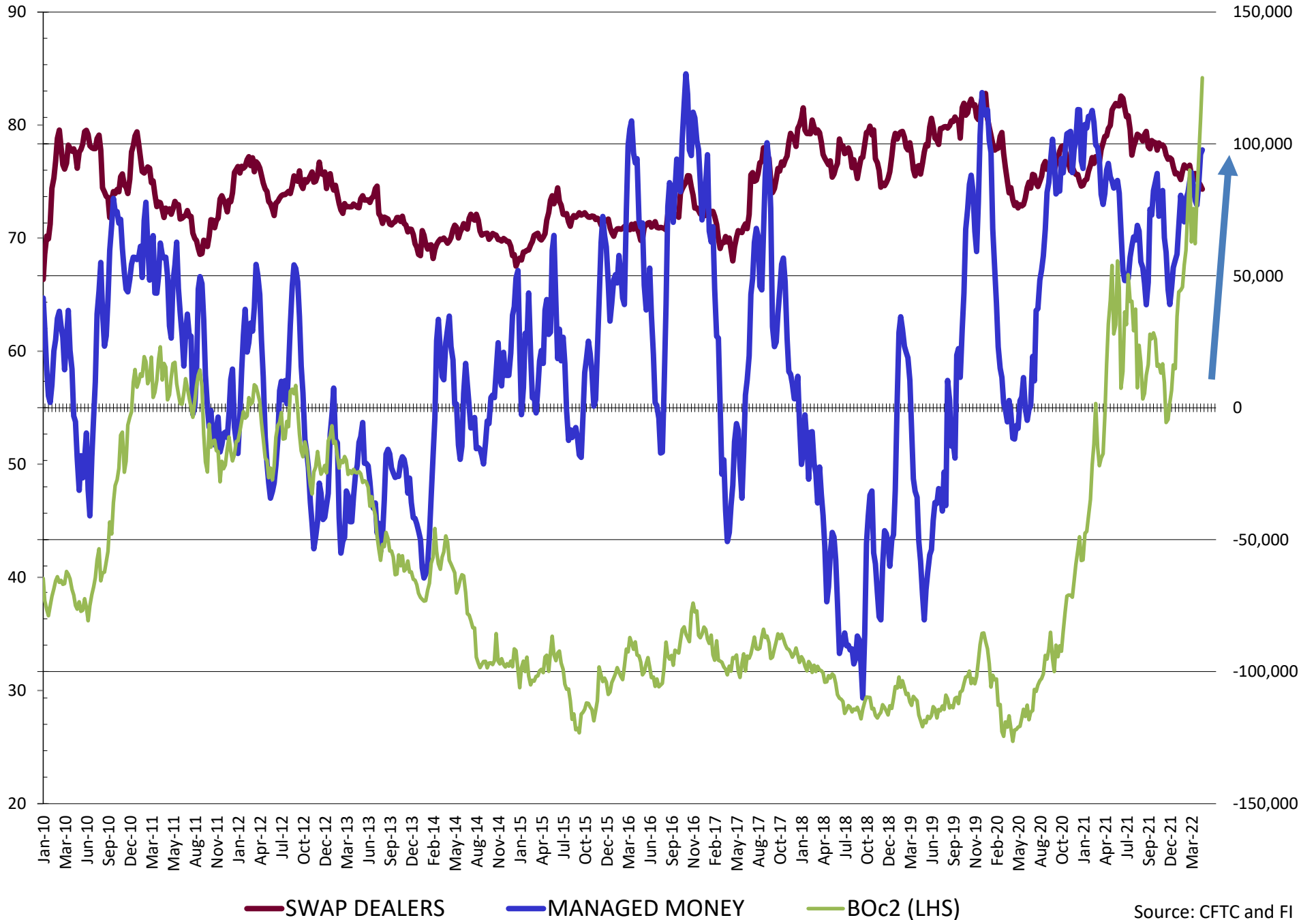
NET POSITION FUTURES AND OPTIONS OF SWAP AND MANAGED FUNDS IN SOYBEANS



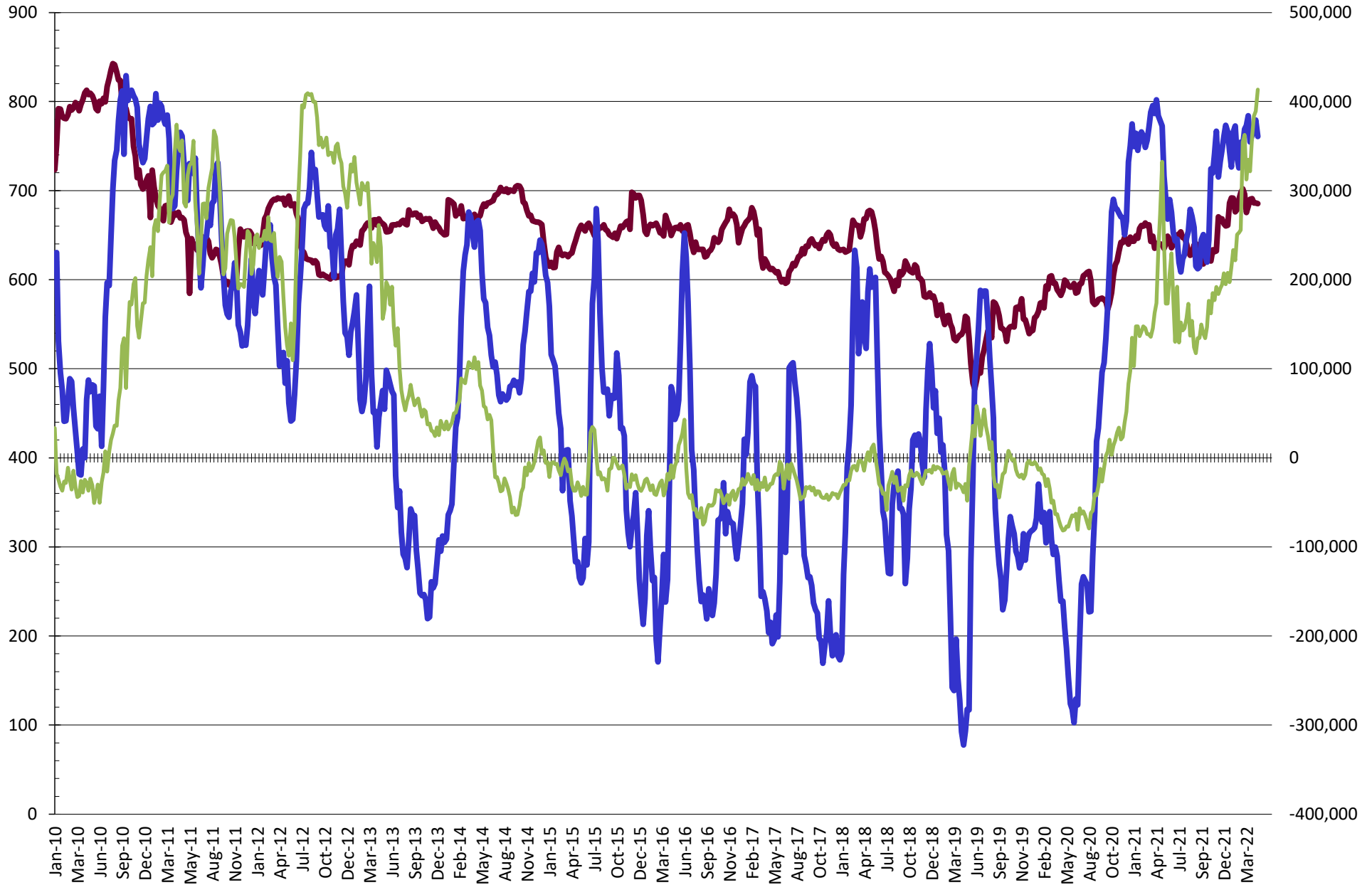
NET POSITION FUTURES AND OPTIONS OF SWAP AND MANAGED FUNDS IN SOYBEAN MEAL



NET POSITION FUTURES AND OPTIONS OF SWAP AND MANAGED FUNDS IN SOYBEAN OIL

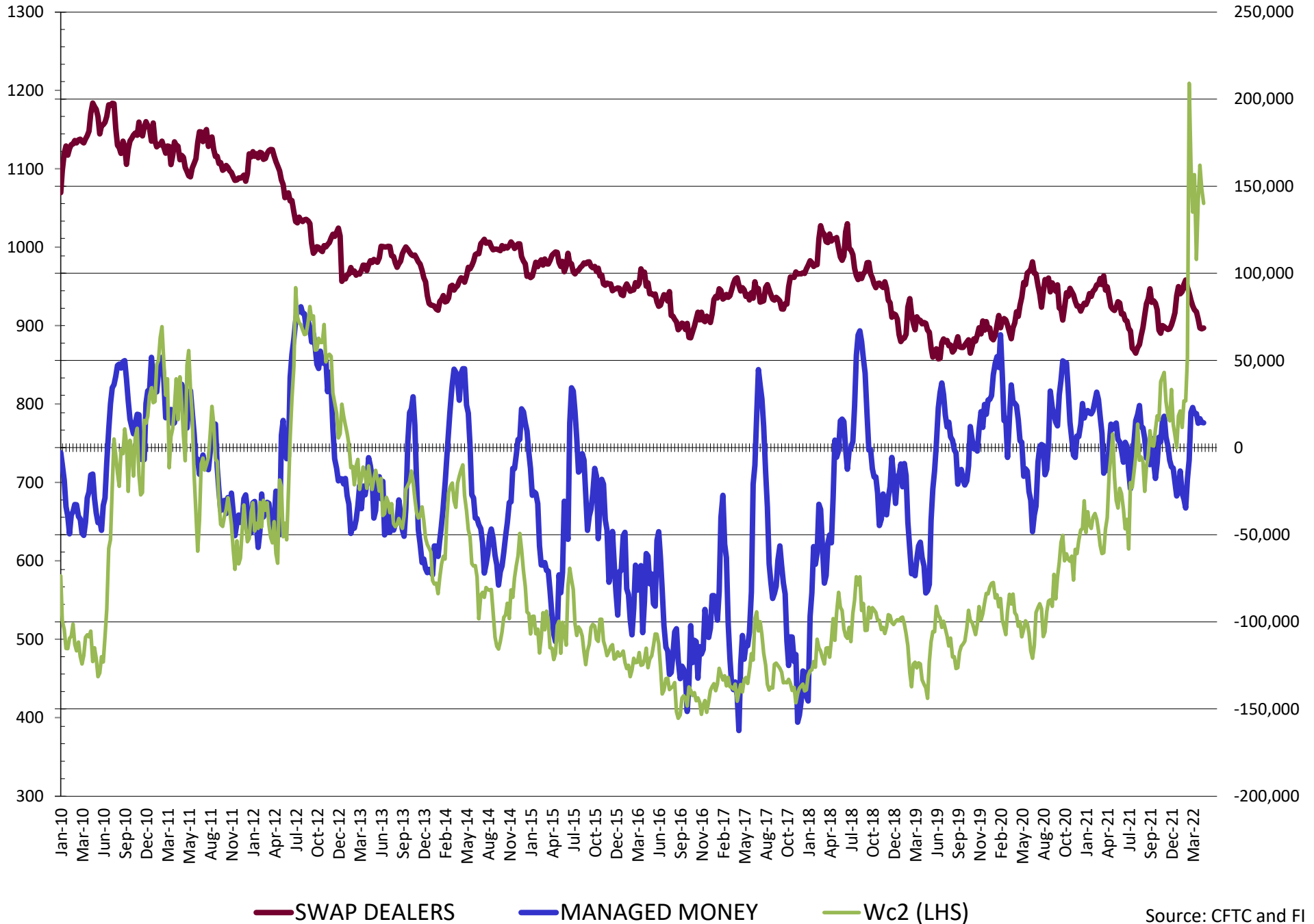


NET POSITION FUTURES AND OPTIONS OF SWAP AND MANAGED FUNDS IN CORN

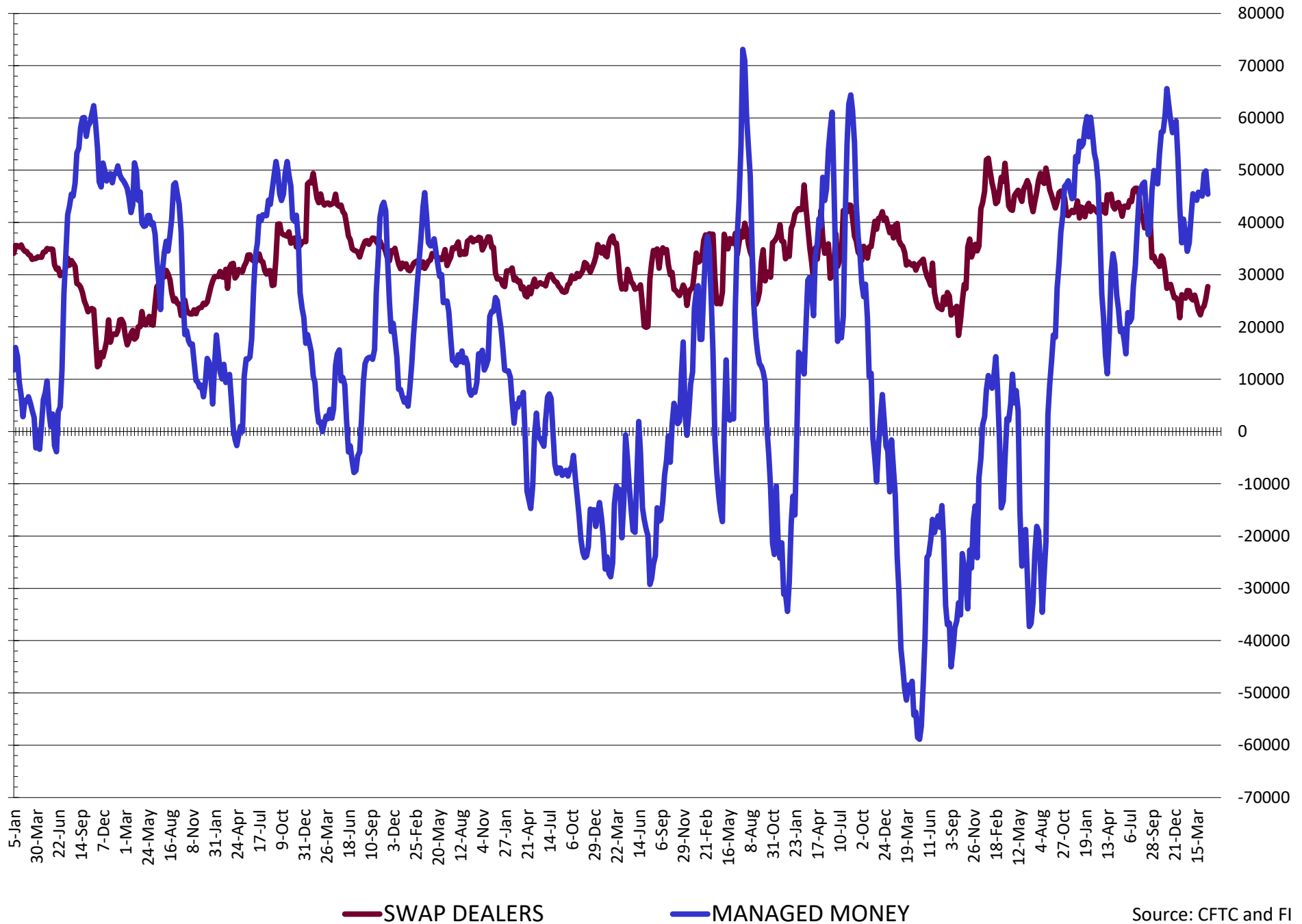


— SWAP DEALERS
 — MANAGED MONEY
 — Cc2 (LHS)

NET POSITION FUTURES AND OPTIONS OF SWAP AND MANAGED FUNDS IN CHICAGO WHEAT

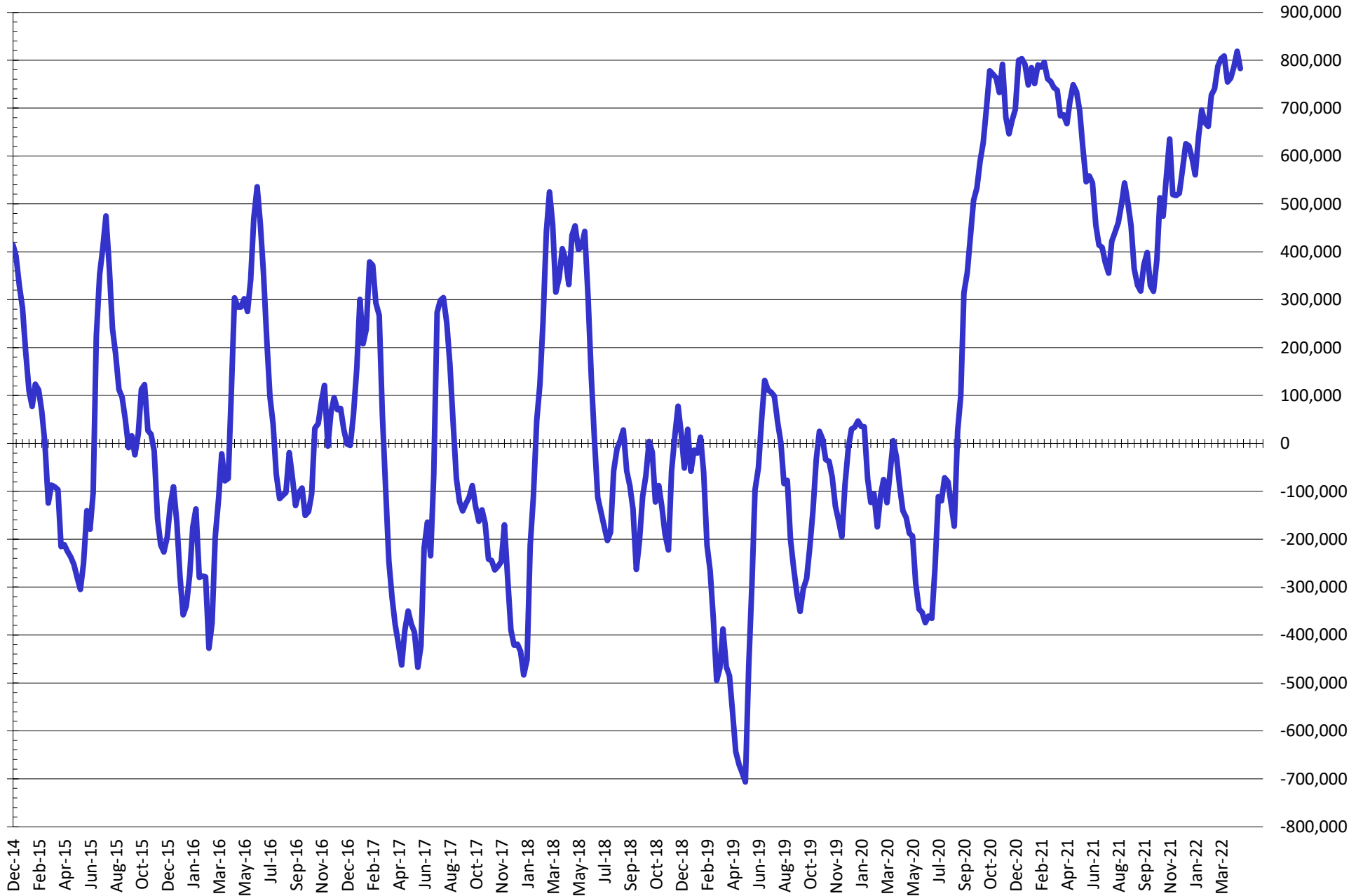


NET POSITION FUTURES AND OPTIONS OF SWAP AND MANAGED FUNDS IN KANSAS WHEAT



Source: CFTC and FI
4/29/2022

NET POSITION FUTURES AND OPTIONS OF SWAP AND MANAGED FUNDS IN COMBINED SRW, HRW, CORN, SOYBEANS, SOYMEAL AND SOYOIL



— Net Managed Money

Source: CFTC and FI
4/29/2022

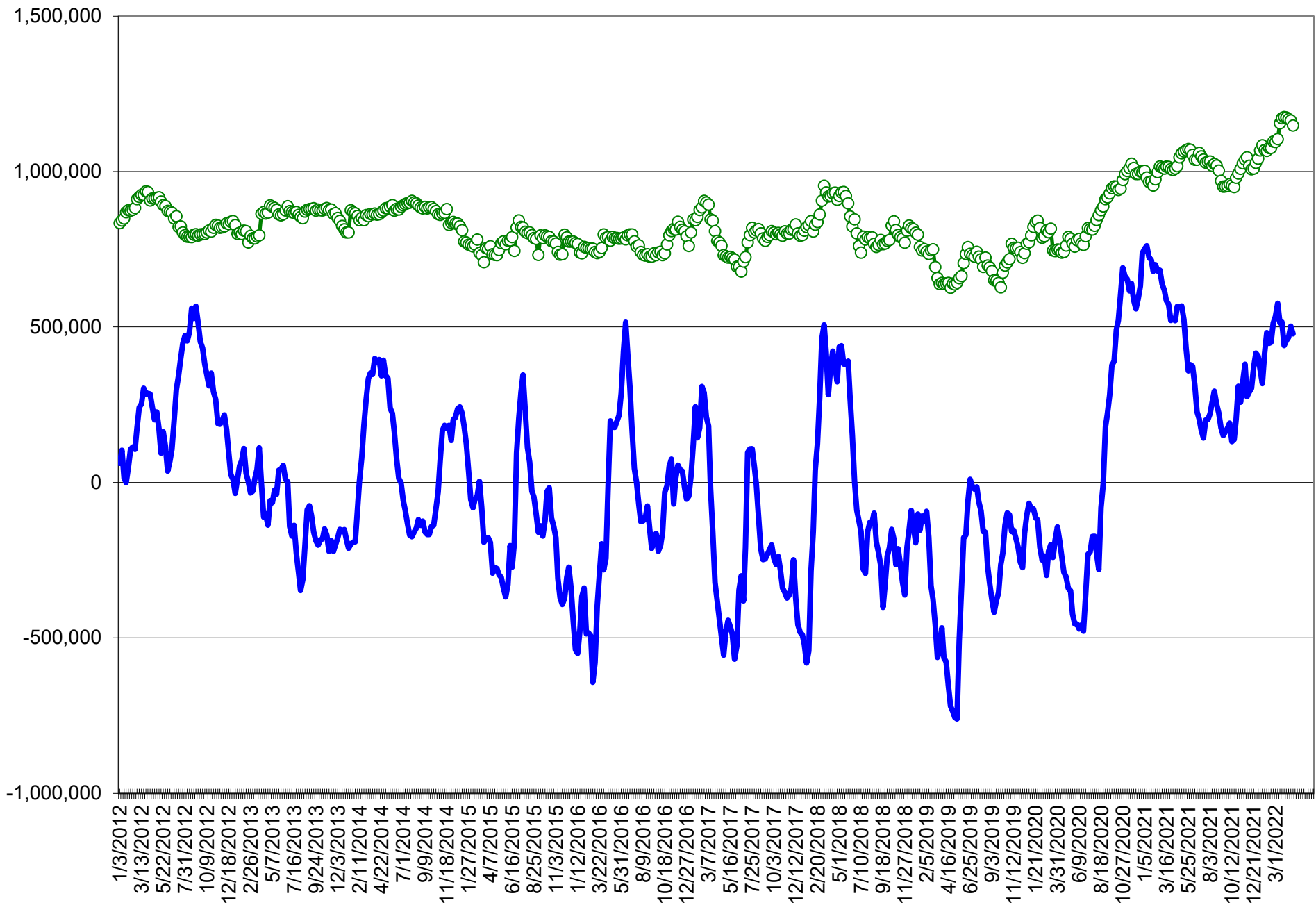
COMMITMENT OF TRADERS
FUTURES & OPTIONS NET POSITIONS (INDEX BROKEN OUT)
AS OF 04/26/2022
(IN THOUSAND CONTRACTS)

	COMMERCIAL				(FUND) NON COMMERCIAL				(SPEC) NON-REPORTABLE			
	26-Apr	19-Apr	12-Apr	5-Apr	26-Apr	19-Apr	12-Apr	5-Apr	26-Apr	19-Apr	12-Apr	5-Apr
	WHEAT											
Chicago	(116.8)	(120.1)	(121.6)	(121.0)	(37.5)	(38.0)	(37.0)	(37.7)	(4.0)	(2.7)	(2.5)	(4.8)
Kansas City	(80.8)	(81.5)	(80.8)	(78.8)	11.9	16.0	15.7	14.2	3.5	2.4	2.2	0.8
Minneapolis	-	-	-	-	-	-	-	-	-	-	-	-
All Wheat	(197.6)	(201.5)	(202.4)	(199.8)	(25.6)	(22.0)	(21.3)	(23.5)	(0.5)	(0.3)	(0.3)	(3.9)
CORN	(720.2)	(741.2)	(726.2)	(712.0)	272.2	286.0	271.1	266.0	(37.7)	(31.0)	(36.6)	(47.7)
OATS	-	-	-	-	-	-	-	-	-	-	-	-
SOYBEANS	(270.5)	(290.1)	(279.6)	(274.6)	97.8	103.6	97.9	93.6	(26.8)	(25.1)	(27.2)	(29.1)
SOY OIL	(203.3)	(204.5)	(194.4)	(181.6)	69.2	64.5	55.2	49.4	17.2	22.7	21.3	15.3
SOY MEAL	(215.8)	(231.2)	(225.1)	(229.9)	64.3	70.5	63.5	70.2	29.2	35.8	35.7	33.8

	TOTAL OPEN INTEREST				(INDEX) COMMERCIAL INDEX TRADERS				(INDEX) % NET OF TOTAL OPEN INTEREST			
	26-Apr	19-Apr	12-Apr	5-Apr	26-Apr	19-Apr	12-Apr	5-Apr	26-Apr	19-Apr	12-Apr	5-Apr
	WHEAT											
Chicago	431,253	484,604	486,821	480,453	158.3	160.8	161.2	163.5	36.7%	33.2%	33.1%	34.0%
Kansas City	195,409	211,504	210,439	208,282	65.4	63.1	62.9	63.8	33.5%	29.8%	29.9%	30.6%
Minneapolis	-	-	-	-	-	-	-	-	-	-	-	-
All Wheat	626,662	696,108	697,260	688,735	223.7	223.9	224.0	227.3	35.7%	32.2%	32.1%	33.0%
CORN	2,157,559	2,363,241	2,263,395	2,170,866	485.7	486.3	491.7	493.7	22.5%	20.6%	21.7%	22.7%
OATS	-	-	-	-	-	-	-	-	-	-	-	-
SOYBEANS	904,744	1,005,019	984,410	979,037	199.5	211.7	208.9	210.1	22.0%	21.1%	21.2%	21.5%
SOY OIL	440,799	471,333	432,997	410,957	116.9	117.4	117.9	116.9	26.5%	24.9%	27.2%	28.4%
SOY MEAL	424,438	466,468	461,136	460,780	122.3	124.9	125.9	126.0	28.8%	26.8%	27.3%	27.3%

SOURCE: CFTC & FI

NET POSITION FUTURES AND OPTIONS OF SPECULATORS AND INDEX FUNDS IN COMBINED SRW, HRW, CORN, SOYBEANS, SOYMEAL AND SOYOIL



Source: CFTC and FI

○ Net Index

— Net Speculator

Traditional Daily Estimate of Funds 4/26/22

	(Neg)-"Short"	Pos-"Long"			
Actual less Est.	(2.0)	15.7	11.5	8.5	(10.2)
	Corn	Bean	Chi. Wheat	Meal	Oil
Actual	497.6	203.8	21.7	116.3	107.0
27-Apr	9.0	11.0	(2.0)	4.0	9.0
28-Apr	3.0	(7.0)	(3.0)	(6.0)	8.0
29-Apr	2.0	2.0	(9.0)	1.0	(4.0)
2-May					
3-May					
FI Est. of Futures Only 4/26/22	511.6	209.8	7.7	115.3	120.0
FI Est. Futures & Options	478.3	190.7	12.4	105.5	118.2
Futures only record long "Traditional Funds"	547.7 1/26/2021	280.9 11/10/2020	86.5 8/7/2018	167.5 5/1/2018	160.2 11/1/2016
Futures only record short	(235.0) 6/9/2020	(118.3) 4/30/2019	(130.0) 4/25/2017	(49.5) 3/1/2016	(69.8) 9/18/2018
Futures and options record net long	557.6 1/12/2021	270.9 10/6/2020	64.8 8/7/2012	132.1 5/1/2018	159.2 1/1/2016
Futures and options record net short	(270.6) 4/26/2019	(132.0) 4/30/2019	(143.3) 4/25/2017	(64.1) 3/1/2016	(77.8) 9/18/2018

Managed Money Daily Estimate of Funds 4/26/22

	Corn	Bean	Chi. Wheat	Meal	Oil
Latest CFTC Fut. Only	338.6	166.7	15.0	90.9	96.2
Latest CFTC F&O	360.7	173.5	14.2	91.3	97.7
FI Est. Managed Fut. Only	353	173	1	90	109
FI Est. Managed Money F&O	375	179	0	90	111

Index Funds Latest Positions (as of last Tuesday)

Index Futures & Options	485.7	199.5	158.3	NA	116.9
Change From Previous Week	(0.6)	(12.2)	(2.5)	NA	(0.4)

Source: Reuters, CFTC & FI (FI est. are noted with latest date)

Disclaimer

TO CLIENTS/PROSPECTS OF FUTURES INTERNATIONAL, SEE RISK DISCLOSURE BELOW:

THIS COMMUNICATION IS CONVEYED AS A SOLICITATION FOR ENTERING INTO A DERIVATIVES TRANSACTION.

Any trading recommendations and market or other information to Customer by Futures International (FI), although based upon information obtained from sources believed by FI to be reliable may not be accurate and may be changed without notice to customer. FI makes no guarantee as to the accuracy or completeness of any of the information or recommendations furnished to Customer. Customer understands that FI, its managers, employees and/or affiliates may have a position in commodity futures, options or other derivatives which may not be consistent with the recommendations furnished by FI to Customer.

The risk of trading futures and options and other derivatives involves a substantial risk of loss and is not suitable for all persons. In purchasing an option, the risk is limited to the premium paid, and all commissions and fees involved with the trade. When an option is shorted or written, the writer of the option has unlimited risk with respect to the option written. The use of options strategies such as a straddles and strangles involve multiple option positions and may substantially increase the amount of commissions and fees paid to execute the strategy. Option prices do not necessarily move in tandem with cash or futures prices. Each person must consider whether a particular trade, combination of trades or strategy is suitable for that person's financial means and objectives.

This material may include discussions of seasonal patterns, however, futures prices have already factored in the seasonal aspects of supply and demand, and seasonal patterns are no indication of future market trends. Finally, past performance is not indicative of future results.

This communication may contain links to third party websites which are not under the control of FI and FI is not responsible for their content. Products and services are offered only in jurisdictions where solicitation and sale are lawful, and in accordance with applicable laws and regulations in each such jurisdiction.