

	Current	Δ from YD	Δ from 7D Avg
Nat Gas Prompt	\$ 8.44	▼ \$ (0.29)	▼ \$ (0.36)

	Current	Δ from YD	Δ from 7D Avg
WTI Prompt	\$ 118.48	▲ \$ 3.41	▲ \$ 5.0

	Current	Δ from YD	Δ from 7D Avg
Brent Prompt	\$ 123.46	▲ \$ 1.79	▲ \$ 5.6

### Page Menu

[Short-term Weather Model Outlooks](#)

[Lower 48 Component Models](#)

[Regional S/D Models Storage Projection](#)

[Weather Model Storage Projection](#)

[Supply – Demand Trends](#)

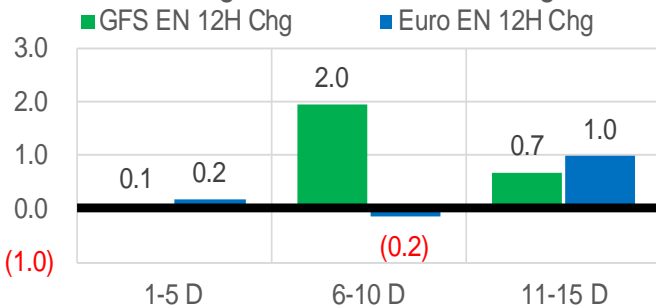
[Nat Gas Options Volume and Open Interest](#)

[Nat Gas Futures Open Interest](#)

[Price Summary](#)

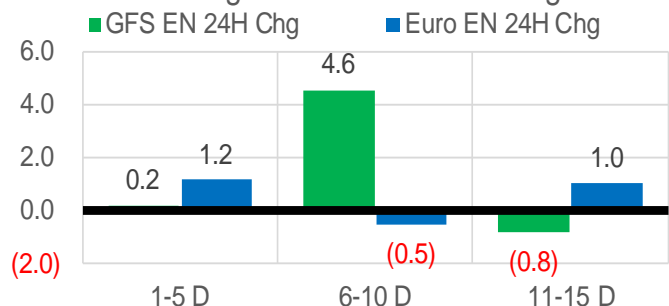
### Vs. 12H Ago

L48 Region - 00z TDD vs 12H Ago



### Vs. 24H Ago

L48 Region - 00z TDD vs 24H Ago



	Current	Δ from YD	Δ from 7D Avg
US Dry Production	97.0	▲ 0.27	▲ 0.82

	Current	Δ from YD	Δ from 7D Avg
US Power Burns	31.4	▲ 2.84	▲ 2.88

	Current	Δ from YD	Δ from 7D Avg
US ResComm	8.9	▼ -0.08	▼ -0.82

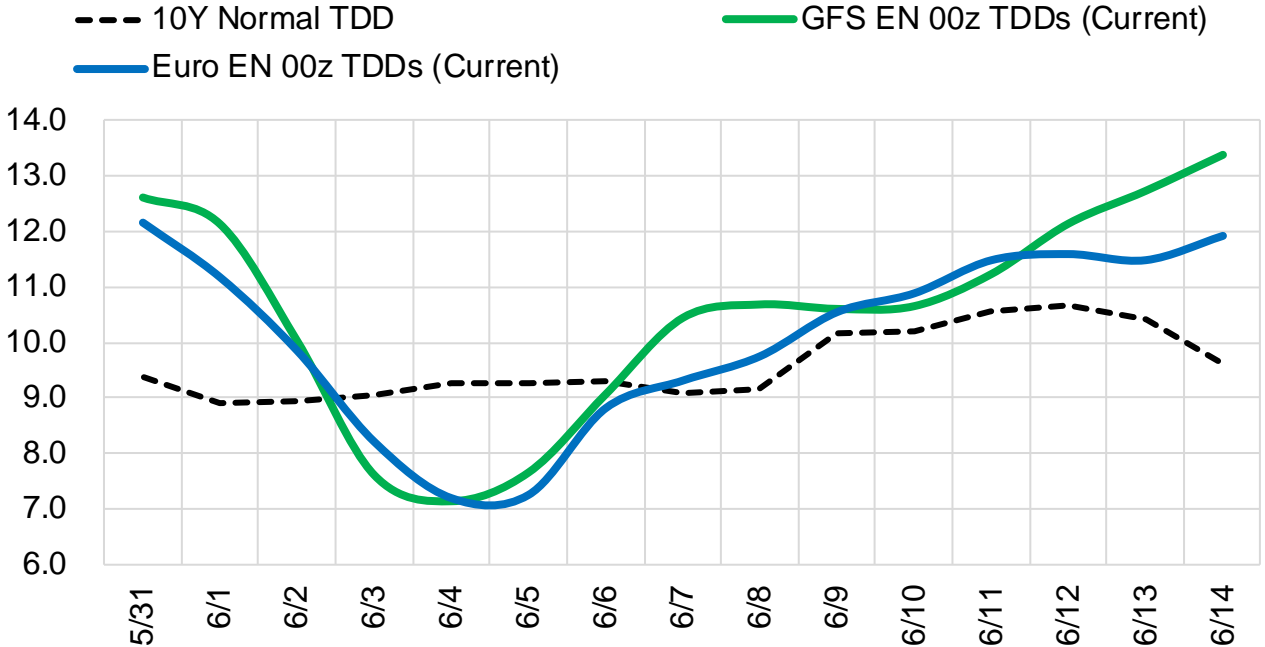
	Current	Δ from YD	Δ from 7D Avg
Canadian Imports	4.8	▲ 0.11	▲ 0.12

	Current	Δ from YD	Δ from 7D Avg
Net LNG Exports	12.0	▼ -0.86	▼ -0.96

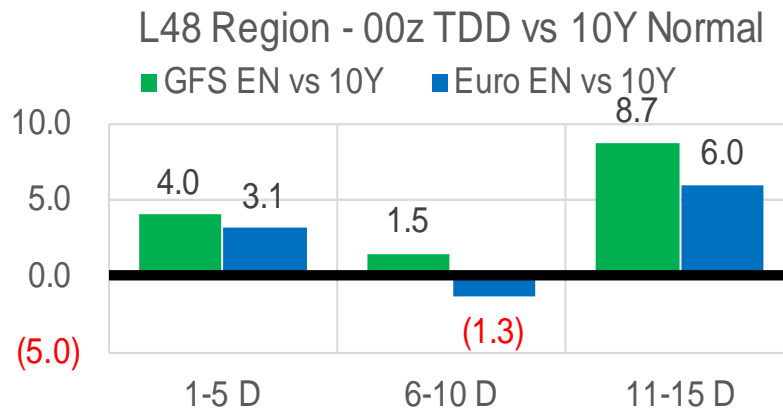
	Current	Δ from YD	Δ from 7D Avg
Mexican Exports	7.1	▼ -0.05	▲ 0.01

## Short-term Weather Model Outlooks (00z)

### L48 Region



## Vs. 10Y Normal



Source: WSI, Bloomberg

## Lower 48 Component Models

### Daily Balances

	25-May	26-May	27-May	28-May	29-May	30-May	31-May	DoD	vs. 7D
<b>Lower 48 Dry Production</b>	<b>95.4</b>	<b>95.8</b>	<b>96.8</b>	<b>97.0</b>	<b>96.5</b>	<b>96.8</b>	<b>97.0</b>	▲ 0.3	▲ 0.7
<b>Canadian Imports</b>	<b>4.6</b>	<b>4.8</b>	<b>4.8</b>	<b>4.7</b>	<b>4.6</b>	<b>4.7</b>	<b>4.8</b>	▲ 0.1	▲ 0.1
L48 Power	29.1	30.3	29.2	26.9	26.4	28.5	31.4	▲ 2.8	▲ 2.9
L48 Residential & Commercial	10.5	9.6	9.1	8.7	8.5	8.9	8.9	▼ -0.1	▼ -0.4
L48 Industrial	21.1	21.5	22.0	22.3	22.5	22.8	22.5	▼ -0.2	▲ 0.5
L48 Lease and Plant Fuel	5.2	5.2	5.2	5.3	5.2	5.2	5.2	▼ 0.0	▲ 0.0
L48 Pipeline Distribution	2.2	2.3	2.2	2.0	2.0	2.1	2.3	▲ 0.2	▲ 0.1
<b>L48 Regional Gas Consumption</b>	<b>68.0</b>	<b>68.9</b>	<b>67.7</b>	<b>65.2</b>	<b>64.6</b>	<b>67.6</b>	<b>70.3</b>	▲ 2.7	▲ 3.2
<b>Net LNG Delivered</b>	<b>13.31</b>	<b>13.23</b>	<b>13.01</b>	<b>13.12</b>	<b>13.03</b>	<b>12.83</b>	<b>11.97</b>	▼ -0.9	▼ -1.1
<b>Total Mexican Exports</b>	<b>7.2</b>	<b>7.1</b>	<b>7.1</b>	<b>7.1</b>	<b>6.7</b>	<b>7.1</b>	<b>7.1</b>	▼ -0.1	▲ 0.0
Implied Daily Storage Activity	11.5	11.4	13.7	16.2	16.7	13.9	12.6		
EIA Reported Daily Storage Activity									
Daily Model Error									

### EIA Storage Week Balances

	22-Apr	29-Apr	6-May	13-May	20-May	27-May	WoW	vs. 4W
<b>Lower 48 Dry Production</b>	<b>96.7</b>	<b>95.8</b>	<b>95.7</b>	<b>95.8</b>	<b>94.9</b>	<b>95.9</b>	▲ 1.1	▲ 0.4
<b>Canadian Imports</b>	<b>5.8</b>	<b>6.1</b>	<b>5.9</b>	<b>5.2</b>	<b>4.9</b>	<b>4.9</b>	▼ 0.0	▼ -0.7
L48 Power	25.1	24.9	26.2	26.8	30.4	30.0	▼ -0.3	▲ 3.0
L48 Residential & Commercial	24.1	18.5	16.6	14.2	9.9	11.4	▲ 1.6	▼ -3.4
L48 Industrial	21.8	22.0	21.6	21.3	21.6	20.9	▼ -0.7	▼ -0.7
L48 Lease and Plant Fuel	5.3	5.2	5.2	5.2	5.1	5.2	▲ 0.1	▲ 0.0
L48 Pipeline Distribution	2.7	2.4	2.4	2.3	2.3	2.4	▲ 0.1	▲ 0.0
<b>L48 Regional Gas Consumption</b>	<b>79.0</b>	<b>73.0</b>	<b>72.0</b>	<b>69.8</b>	<b>69.3</b>	<b>69.9</b>	▲ 0.7	▼ -1.1
<b>Net LNG Exports</b>	<b>12.1</b>	<b>12.2</b>	<b>12.2</b>	<b>12.2</b>	<b>12.2</b>	<b>13.0</b>	▲ 0.8	▲ 0.8
<b>Total Mexican Exports</b>	<b>6.7</b>	<b>6.9</b>	<b>6.9</b>	<b>7.0</b>	<b>7.0</b>	<b>7.0</b>	▲ 0.1	▲ 0.1
Implied Daily Storage Activity	4.7	9.7	10.5	12.0	11.4	10.8	-0.5	
EIA Reported Daily Storage Activity	5.7	11.0	10.9	12.7	11.4			
Daily Model Error	-1.0	-1.3	-0.4	-0.7	-0.1			

### Monthly Balances

	2Yr Ago May-20	LY May-21	Jan-22	Feb-22	Mar-22	Apr-22	MTD May-22	MoM	vs. LY
<b>Lower 48 Dry Production</b>	<b>87.0</b>	<b>93.0</b>	<b>93.3</b>	<b>92.7</b>	<b>95.0</b>	<b>96.2</b>	<b>95.7</b>	▼ -0.4	▲ 2.7
<b>Canadian Imports</b>	<b>3.9</b>	<b>4.5</b>	<b>6.7</b>	<b>6.6</b>	<b>5.2</b>	<b>5.8</b>	<b>5.1</b>	▼ -0.7	▲ 0.6
L48 Power	26.9	26.5	31.5	28.9	25.6	24.8	28.6	▲ 3.9	▲ 2.1
L48 Residential & Commercial	12.8	12.8	49.1	44.4	30.7	22.2	12.2	▼ -10.0	▼ -0.6
L48 Industrial	19.4	20.9	24.7	22.5	21.8	22.0	21.5	▼ -0.5	▲ 0.6
L48 Lease and Plant Fuel	4.7	5.0	5.1	5.1	5.2	5.2	5.2	▼ -0.1	▲ 0.2
L48 Pipeline Distribution	2.2	2.2	3.8	3.6	2.9	2.6	2.3	▼ -0.3	▲ 0.1
<b>L48 Regional Gas Consumption</b>	<b>65.9</b>	<b>67.5</b>	<b>114.3</b>	<b>104.4</b>	<b>86.2</b>	<b>76.8</b>	<b>69.8</b>	▼ -7.0	▲ 2.3
<b>Net LNG Exports</b>	<b>6.7</b>	<b>10.8</b>	<b>12.4</b>	<b>12.4</b>	<b>12.9</b>	<b>12.3</b>	<b>12.5</b>	▲ 0.2	▲ 1.7
<b>Total Mexican Exports</b>	<b>4.8</b>	<b>6.8</b>	<b>6.3</b>	<b>6.2</b>	<b>6.5</b>	<b>6.7</b>	<b>7.0</b>	▲ 0.3	▲ 0.2
Implied Daily Storage Activity	13.6	12.4	-32.9	-23.7	-5.5	6.2	11.5		
EIA Reported Daily Storage Activity									
Daily Model Error									

Source: Bloomberg, analytix.ai

## Daily Average Generation Data

### Nuclear Generation Daily Average - GWh (NRC)

	23-May	24-May	25-May	26-May	27-May	28-May	29-May	DoD	vs. 7D
NRC Nuclear Daily Output	84.5	83.1	83.2	83.8	85.0	85.0	85.0	0.0	0.9
NRC Nuclear Max Capacity	104.9	104.9	104.9	104.9	104.9	104.9	104.9	0.0	0.0
NRC Nuclear Outage	20.4	21.8	21.7	21.0	19.8	19.8	19.8	0.0	-0.9
NRC % Nuclear Cap Utilization	85.9	84.5	84.6	85.3	86.5	86.5	86.5	0.0	0.9

### Wind Generation Daily Average - MWh (EIA)

	23-May	24-May	25-May	26-May	27-May	28-May	29-May	DoD	vs. 7D
CALI Wind	3554	1574	1508	2889	3837	4802	4175	-627	1148
TEXAS Wind	12479	13490	13464	12764	12960	21861	24730	2870	10227
US Wind	42707	44206	56894	48258	43836	67528	79510	11982	28939

### Generation Daily Average - MWh (EIA)

	23-May	24-May	25-May	26-May	27-May	28-May	29-May	DoD	vs. 7D
US Wind	42707	44206	56894	48258	43836	67528	79510	11982	28939
US Solar	16476	16359	16338	16285	17184	17573	16253	-1320	-449
US Petroleum	316	432	478	392	643	733	643	-90	144
US Other	7257	7032	7131	6879	7025	6735	7419	684	409
US Coal	89618	88562	82232	85938	88789	75152	77105	1953	-7943
US Nuke	87796	86890	87125	87774	88828	88698	88689	-9	837
US Hydro	32332	35039	34945	37464	36066	33613	32441	-1173	-2469
<b>US Gas</b>	<b>155822</b>	<b>155643</b>	<b>152243</b>	<b>155806</b>	<b>163301</b>	<b>131189</b>	<b>126994</b>	<b>-4196</b>	<b>-25340</b>

See National Wind and Nuclear daily charts

Source: Bloomberg, analytix.ai

## Storage Week Average Generation Data

### Nuclear Generation Weekly Average - GWh (NRC)

	22-Apr	29-Apr	6-May	13-May	20-May	27-May	WoW	WoW Bcf/d Impact
NRC Nuclear Daily Output	72.3	73.5	76.7	79.3	81.7	84.2	2.5	-0.5
NRC Nuclear Max Capacity	104.9	104.9	104.9	104.9	104.9	104.9	0.0	
NRC Nuclear Outage	32.6	31.4	28.2	25.5	23.2	20.6	-2.5	
NRC % Nuclear Cap Utilization	73.5	74.8	78.0	80.7	83.1	85.7	2.6	

### Wind Generation Weekly Average - MWh (EIA)

	22-Apr	29-Apr	6-May	13-May	20-May	27-May	WoW	WoW Bcf/d Impact
CALI Wind	3613	3153	2929	3983	3452	2798	-654	0.1
TEXAS Wind	15612	18327	16902	17705	15706	14854	-852	0.2
US Wind	61570	66986	57243	64974	50251	51023	772	-0.1
							2%	
							-0.1	

### Generation Weekly Average - MWh (EIA)

	22-Apr	29-Apr	6-May	13-May	20-May	27-May	WoW	WoW Bcf/d Impact
						est.		
US Wind	61570	66986	57243	64974	50251	51023	772	-0.1
US Solar	15897	16968	17032	18000	19634	16986	-2648	0.5
US Petroleum	984	992	931	341	262	448	186	0.0
US Other	7544	7717	7525	7615	7871	7528	-343	0.1
US Coal	79575	77533	78898	81273	88922	88295	-627	0.1
US Nuke	76478	77438	80545	83391	85510	88021	2511	-0.5
US Hydro	28355	26721	26825	28968	31973	33751	1778	-0.3
<b>US Gas</b>	<b>133401</b>	<b>131482</b>	<b>145738</b>	<b>148473</b>	<b>172224</b>	<b>158678</b>	<b>-13546</b>	<b>-2.4</b>

See National Wind and Nuclear daily charts

Source: Bloomberg, analytix.ai

## Monthly Average Generation Data

### Nuclear Generation Monthly Average - GWh (NRC)

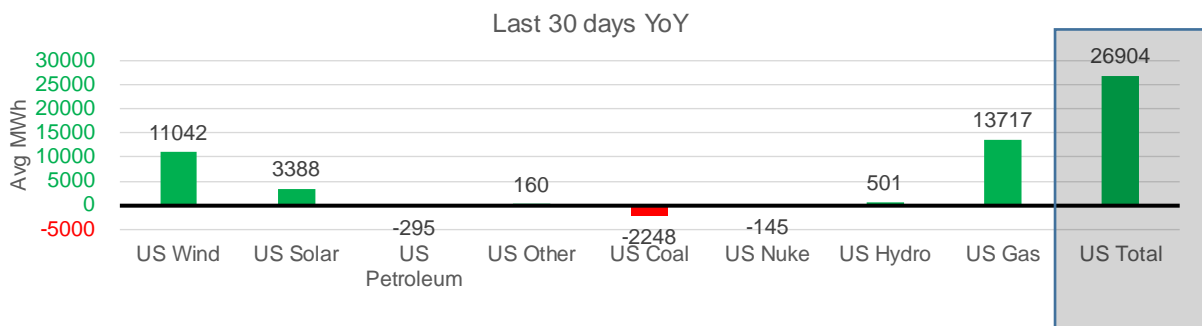
	2Yr Ago	LY	MTD				Last 30 days	Last 30 days YoY
	Same 30 days	Same 30 days	Feb-22	Mar-22	Apr-22	May-22		
NRC Nuclear Daily Output	82.9	82.0	87.3	81.3	73.3	81.6	81.8	-0.2
NRC Nuclear Max Capacity	104.9	104.9	104.9	104.9	104.9	104.9	104.9	0.0
NRC Nuclear Outage	22.0	22.9	17.5	23.6	31.6	23.3	23.1	0.2
NRC % Nuclear Cap Utilization	84.3	83.4	88.8	82.7	74.5	83.0	83.2	-0.2

### Wind Generation Monthly Average - MWh (EIA)

	2Yr Ago	LY	MTD				Last 30 days	Last 30 days YoY
	Same 30 days	Same 30 days	Feb-22	Mar-22	Apr-22	May-22		
CALI Wind	2521	3355	1495	2250	3186	3464	3441	86
TEXAS Wind	10276	12532	11750	14837	16311	17110	17062	4530
US Wind	37310	45811	54543	58528	64183	57148	56854	11042

### Generation Monthly Average - MWh (EIA)

	2Yr Ago	LY	MTD				Last 30 days	Last 30 days YoY
	Same 30 days	Same 30 days	Feb-22	Mar-22	Apr-22	May-22		
US Wind	37310	45811	54543	58528	64183	57148	56854	▲ 11042
US Solar	11297	14446	12442	14057	16208	17754	17835	▲ 3388
US Petroleum	761	779	1331	985	985	494	484	▼ -295
US Other	8289	7454	8632	7206	7386	7594	7614	▲ 160
US Coal	62941	86899	105631	82290	77545	84277	84651	▼ -2248
US Nuke	86745	85739	92027	85256	77217	85423	85594	▼ -145
US Hydro	37891	30883	32284	33959	29022	31163	31385	▲ 501
<b>US Gas</b>	<b>144503</b>	<b>142137</b>	<b>153733</b>	<b>137232</b>	<b>133068</b>	<b>154716</b>	<b>155854</b>	<b>▲ 13717</b>
<b>US Total</b>	<b>388482</b>	<b>414505</b>	<b>461069</b>	<b>419842</b>	<b>406184</b>	<b>439701</b>	<b>441409</b>	<b>▲ 26904</b>



See National Wind and Nuclear daily charts

Source: Bloomberg, analytix.ai

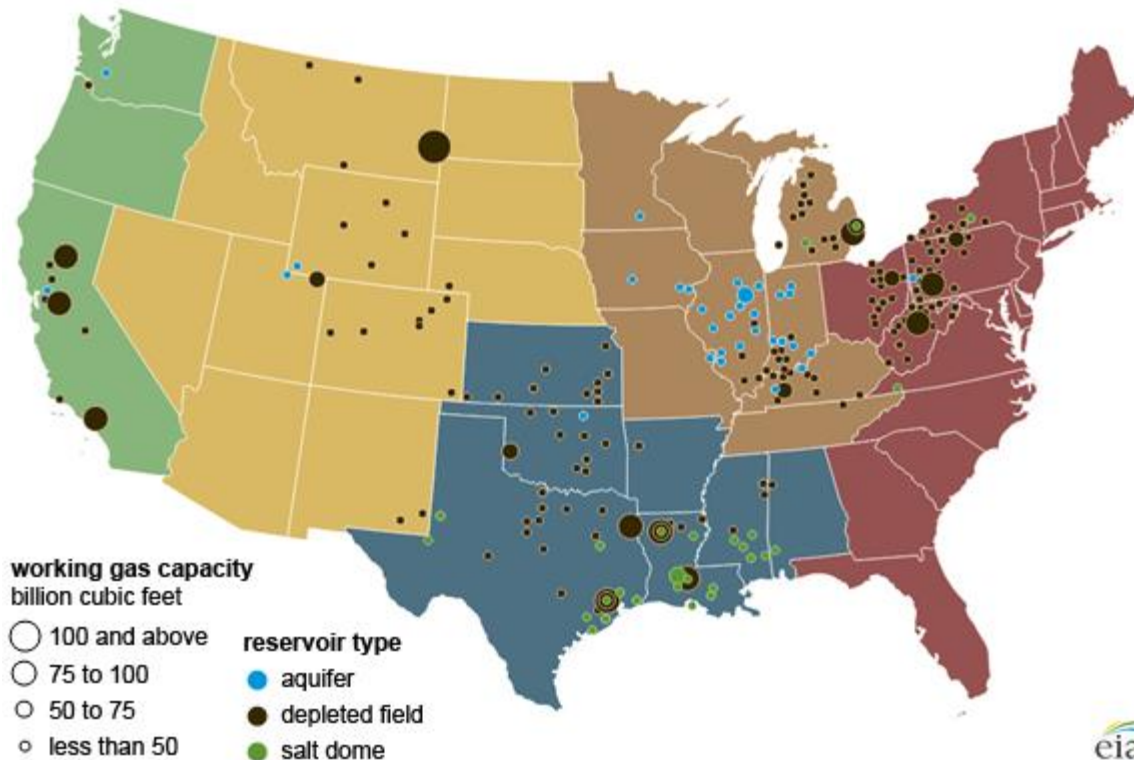
## Regional S/D Models Storage Projection

Week Ending 27-May

	Daily Raw Storage	Daily Adjustment Factor	Daily Average Storage Activity (Adjusted) *	Weekly Adjusted Storage Activity
L48	11.7	-0.3	11.4	80
East	2.2	2.4	4.6	32
Midwest	4.6	-0.9	3.7	26
Mountain	4.2	-3.8	0.4	3
South Central	-1.0	2.7	1.7	12
Pacific	1.6	-0.7	0.9	6

\*Adjustment Factor is calculated based on historical regional deltas

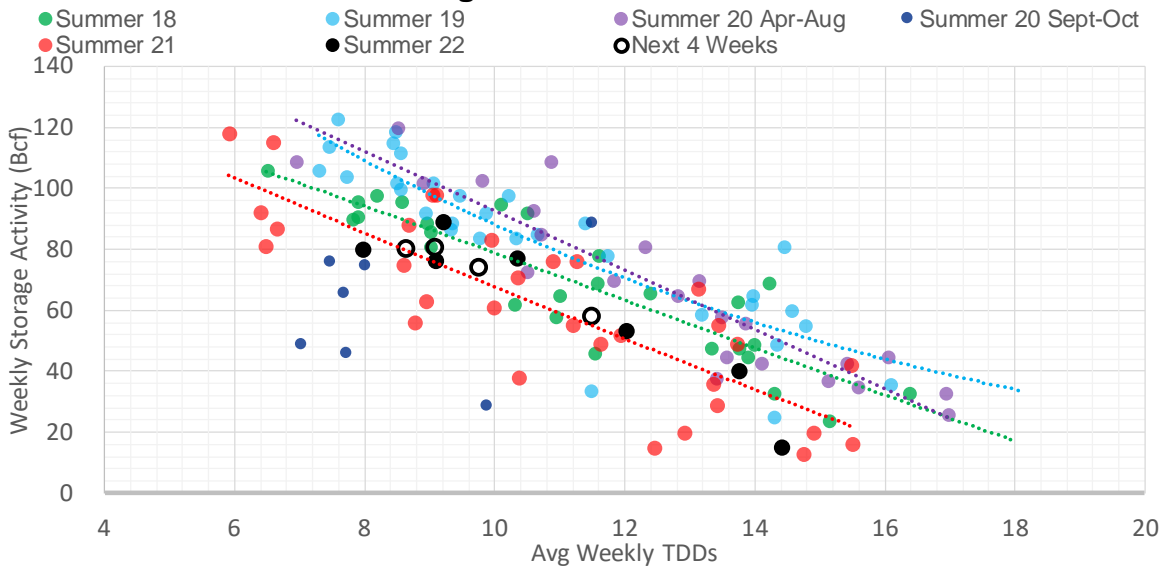
U.S. underground natural gas storage facilities by type (July 2015)



### Weather Model Storage Projection

Next report and beyond		
Week Ending	TDDs	Week Storage Projection
27-May	8.6	80
03-Jun	9.8	74
10-Jun	9.1	80
17-Jun	11.5	58

### Weather Storage Model - Next 4 Week Forecast

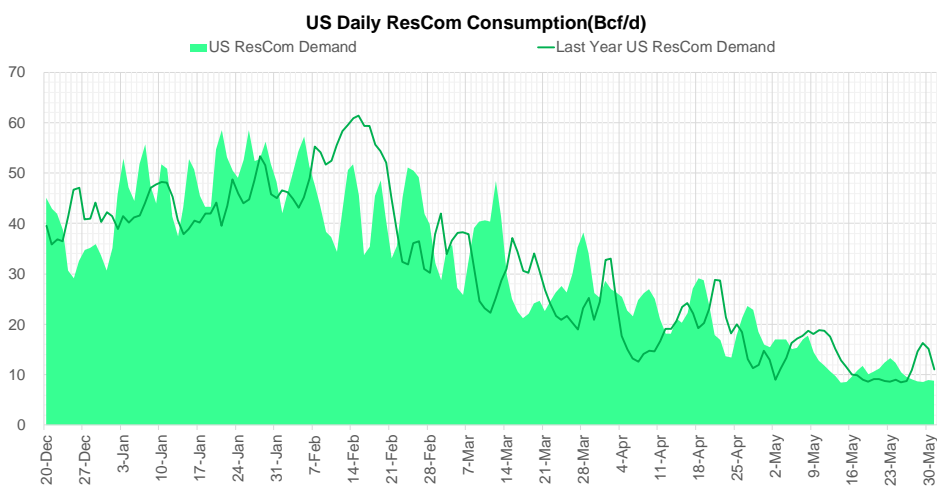
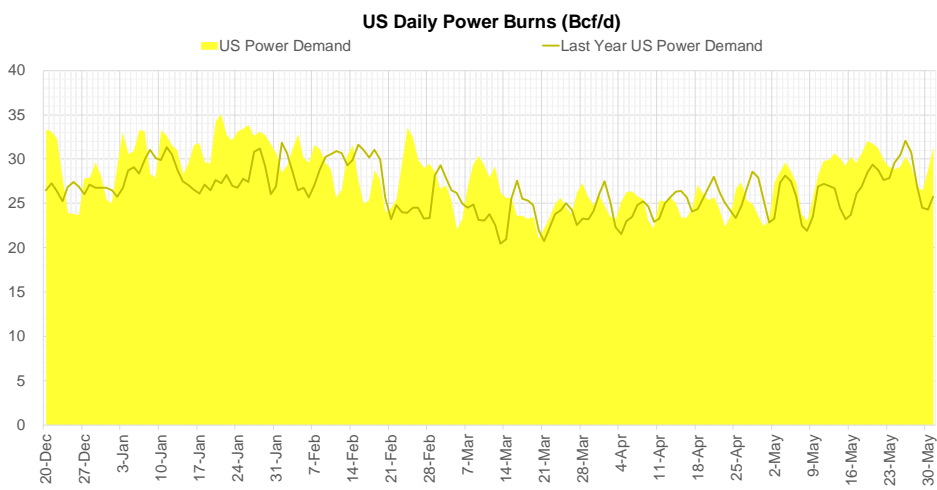
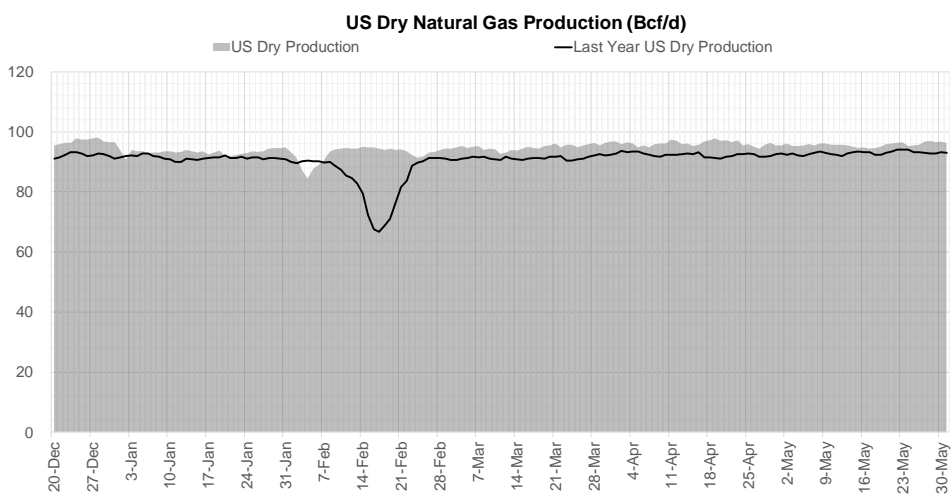


Go to larger image





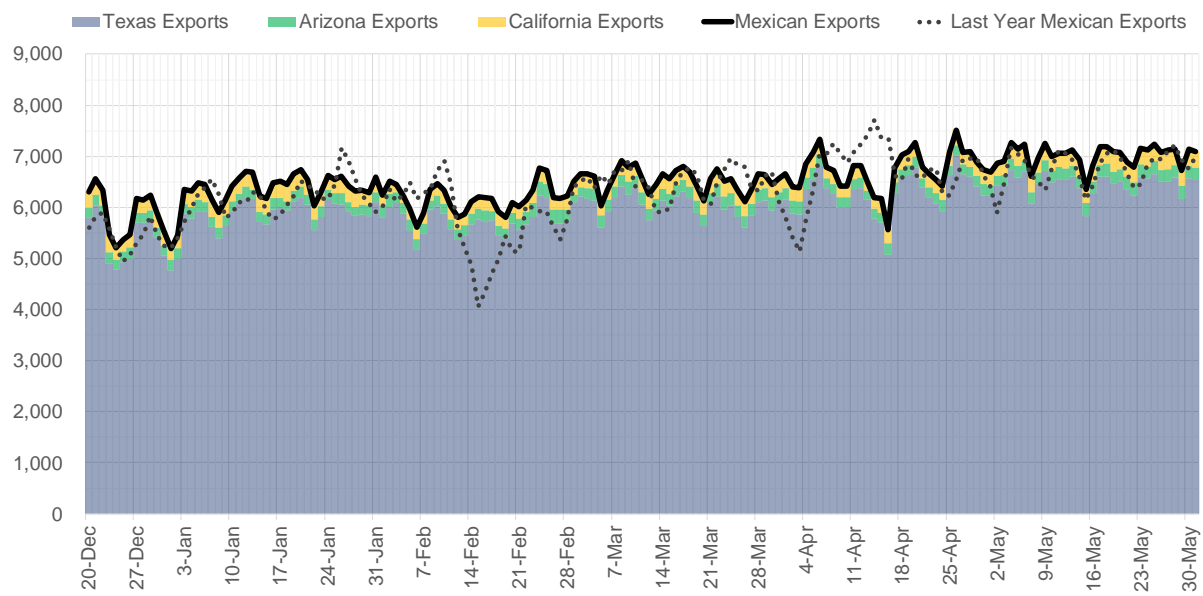
## Supply – Demand Trends



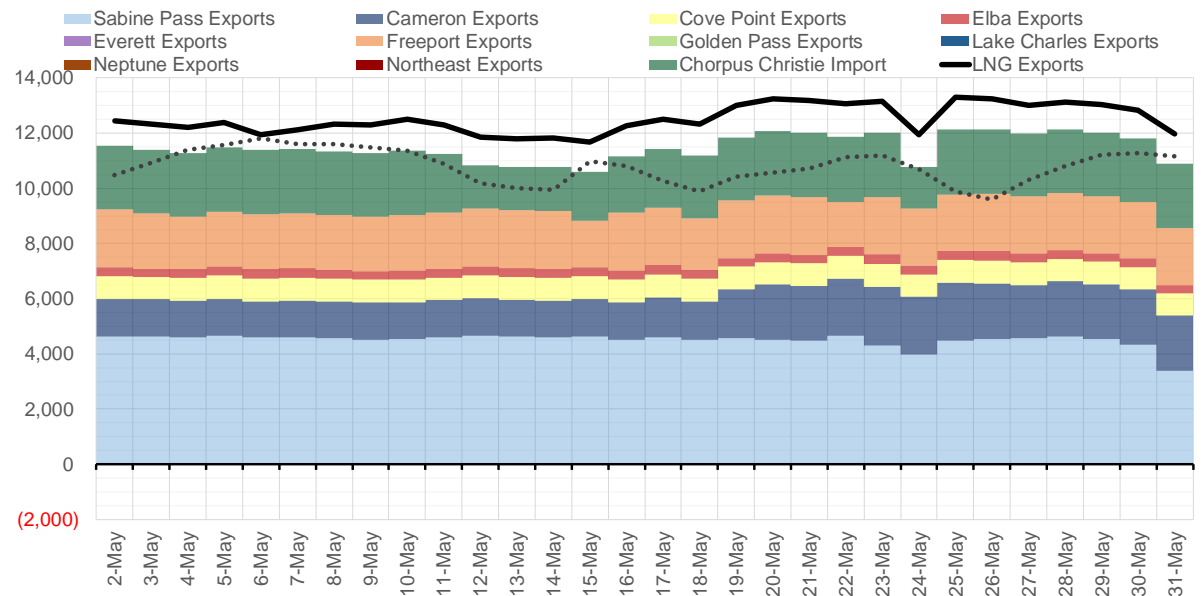
Source: Bloomberg

The risk of trading futures and options and other derivatives involves a substantial risk of loss and is not suitable for all persons. Each person must consider whether a particular trade, combination of trades, or strategy is suitable for that person's financial means and objectives. Past results are not necessarily indicative of future results. This communication may contain links to third party websites which are not under the control of and are not maintained by ION Energy Group, and ION Energy Group is not responsible for their content.

### Mexican Exports (MMcf/d)



### Net LNG Exports - Last 30 days (MMcf/d)



Source: Bloomberg

The risk of trading futures and options and other derivatives involves a substantial risk of loss and is not suitable for all persons. Each person must consider whether a particular trade, combination of trades, or strategy is suitable for that person's financial means and objectives. Past results are not necessarily indicative of future results. This communication may contain links to third party websites which are not under the control of and are not maintained by ION Energy Group, and ION Energy Group is not responsible for their content.

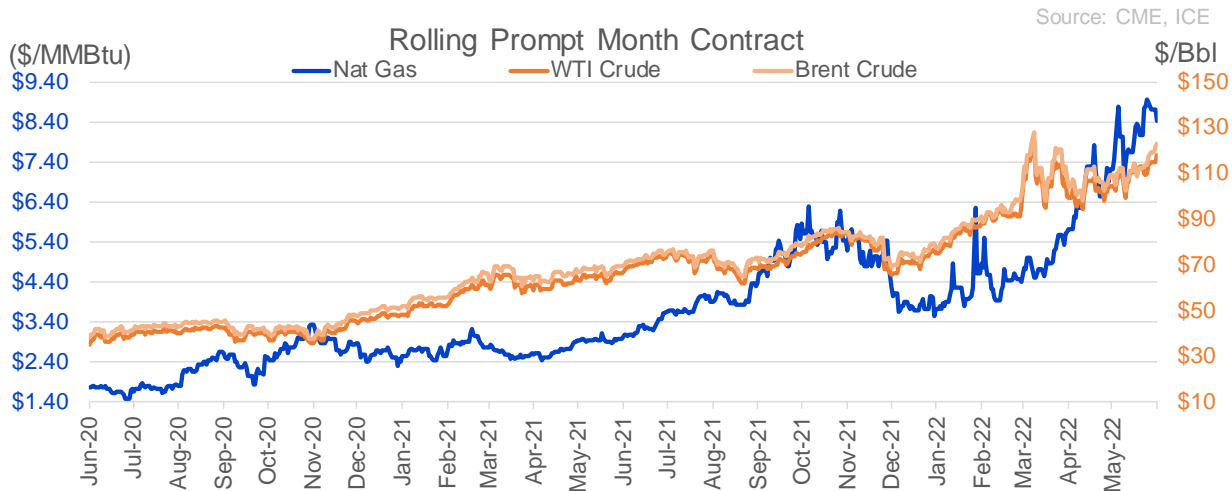
## Nat Gas Options Volume and Open Interest CME and ICE Combined

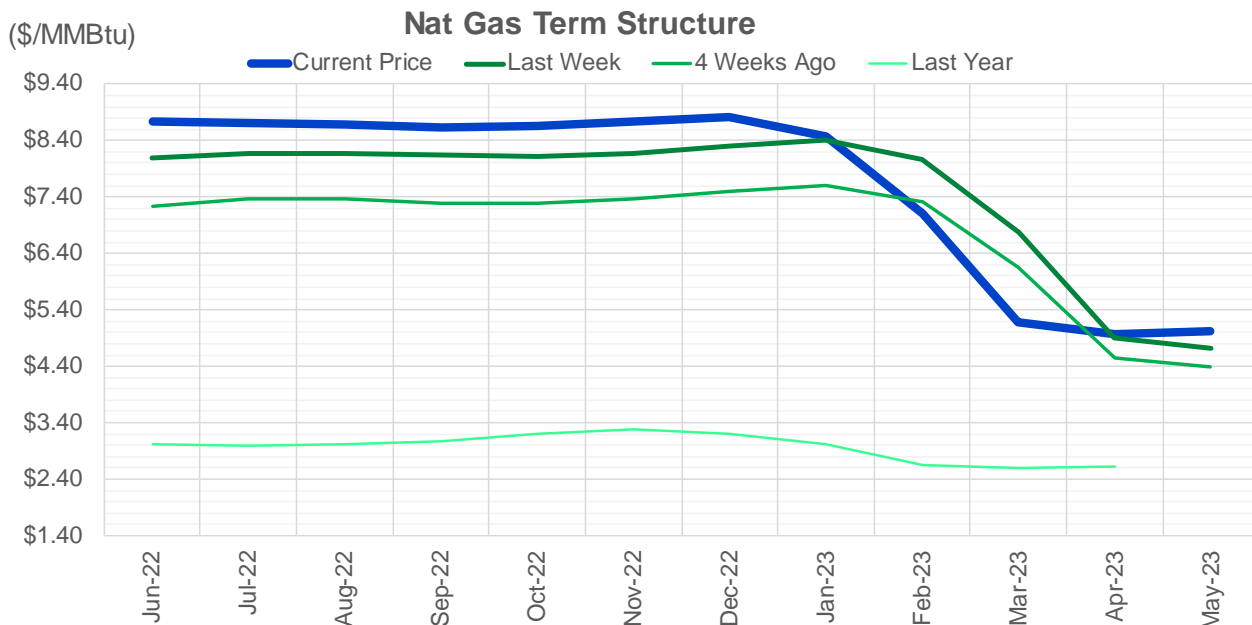
CONTRACT MONTH	CONTRACT YEAR	PUT/CALL	STRIKE	CUMULATIVE VOL	CONTRACT MONTH	CONTRACT YEAR	PUT/CALL	STRIKE	CUMULATIVE OI
7	2022	P	6.00	5431	8	2022	C	10.00	49335
8	2022	P	6.00	5391	8	2022	C	10.50	37824
7	2022	P	7.00	5301	10	2022	C	6.00	35395
8	2022	C	12.00	4587	7	2022	C	11.00	30058
7	2022	P	6.50	3745	8	2022	C	12.00	29477
7	2022	P	6.25	3431	10	2022	C	5.00	24089
7	2022	C	11.00	3026	9	2022	C	6.00	23663
9	2022	C	15.00	2442	7	2022	C	10.00	21735
8	2022	C	10.00	2398	7	2022	C	9.00	20950
8	2022	C	12.10	2326	10	2022	P	3.00	20927
7	2022	C	10.00	2152	10	2022	P	6.00	20807
9	2022	C	15.50	2000	7	2022	C	11.10	20700
7	2022	P	8.00	1892	10	2022	P	3.50	20524
7	2022	C	11.25	1834	9	2022	C	10.00	20173
8	2022	C	11.00	1674	8	2022	C	12.10	20102
7	2022	P	8.25	1592	10	2022	P	2.50	19868
7	2022	P	7.50	1514	8	2022	C	6.00	19483
8	2022	C	15.00	1450	7	2022	C	6.00	18943
3	2023	P	5.00	1350	8	2022	C	7.00	18259
1	2023	P	5.00	1250	12	2022	C	5.00	18221
2	2023	P	5.00	1250	7	2022	C	8.00	18135
7	2022	C	12.00	1084	9	2022	C	7.00	18091
8	2022	C	10.50	1065	7	2022	C	7.00	17660
4	2023	C	6.00	1003	10	2022	P	2.00	17408
5	2023	C	6.00	1003	7	2022	P	3.25	17344
6	2023	C	6.00	1003	10	2022	P	4.00	17068
7	2023	C	6.00	1003	8	2022	C	9.00	17047
8	2023	C	6.00	1003	7	2022	P	7.00	16985
9	2023	C	6.00	1003	7	2022	P	6.00	16673
10	2023	C	6.00	1003	5	2023	P	2.00	16336
12	2022	P	5.00	1002	2	2023	C	10.00	16074
11	2022	P	5.00	1000	1	2023	C	10.00	16030
8	2022	P	7.00	953	7	2022	P	5.50	15555
8	2022	C	11.50	930	7	2022	P	5.00	15478
7	2022	C	9.00	913	9	2022	P	2.50	15291
9	2022	P	7.00	898	3	2023	C	10.00	14911
10	2022	P	7.00	898	9	2022	P	2.75	14883
8	2022	P	5.50	882	10	2022	C	10.00	14870
9	2022	P	5.00	866	10	2022	P	3.25	14817
8	2022	P	8.00	786	9	2022	P	3.00	14626
8	2022	C	20.00	784	7	2022	P	3.50	14604
10	2022	P	6.00	762	10	2022	C	8.00	14556
10	2022	P	5.00	750	8	2022	P	3.00	14552
9	2022	P	8.00	730	11	2022	P	4.00	14494
9	2022	P	6.00	700	7	2022	P	3.00	14491
12	2022	P	7.00	700	8	2022	C	8.00	14380
8	2022	P	5.00	654	12	2022	C	6.00	13934
10	2022	C	15.00	641	10	2023	P	2.00	13680
8	2022	C	8.00	637	7	2022	P	4.00	13495
					7	2022	C	3	13231

Source: CME, ICE

## Nat Gas Futures Open Interest CME and ICE Combined

CME Henry Hub Futures (10,000 MMBtu)				ICE Henry Hub Futures Contract Equivalent (10,000 MM			
	Current	Prior	Daily Change		Current	Prior	Daily Change
JUL 22	209358	233	209125	JUL 22	91504	87447	4056
AUG 22	68140	210086	-141946	AUG 22	59349	93141	-33792
SEP 22	107122	67801	39321	SEP 22	65751	59659	6091
OCT 22	93990	104530	-10540	OCT 22	72488	64072	8416
NOV 22	49636	92772	-43136	NOV 22	59298	74227	-14929
DEC 22	50487	49558	929	DEC 22	62292	59011	3281
JAN 23	64207	49644	14563	JAN 23	64741	61903	2838
FEB 23	27823	64103	-36280	FEB 23	55351	64547	-9196
MAR 23	39791	27745	12046	MAR 23	54473	55939	-1466
APR 23	59342	39069	20273	APR 23	51798	54439	-2641
MAY 23	61323	59962	1361	MAY 23	52042	52353	-311
JUN 23	26086	60969	-34883	JUN 23	45592	52280	-6688
JUL 23	24023	26292	-2269	JUL 23	43170	45754	-2584
AUG 23	15713	23663	-7950	AUG 23	43297	43458	-162
SEP 23	18949	15194	3755	SEP 23	42163	43568	-1405
OCT 23	38369	19082	19287	OCT 23	48909	42431	6478
NOV 23	12787	37924	-25137	NOV 23	43728	49392	-5664
DEC 23	14552	12864	1688	DEC 23	39633	43583	-3950
JAN 24	20160	14456	5704	JAN 24	39592	39459	133
FEB 24	6094	20036	-13942	FEB 24	26701	39823	-13122
MAR 24	14033	6108	7925	MAR 24	31180	26628	4552
APR 24	12125	13985	-1860	APR 24	27273	31020	-3748
MAY 24	6569	12121	-5552	MAY 24	26033	27266	-1233
JUN 24	1845	6541	-4696	JUN 24	22412	26034	-3621
JUL 24	1966	1824	142	JUL 24	22648	22383	265
AUG 24	2983	2003	980	AUG 24	22683	22619	65
SEP 24	1330	2983	-1653	SEP 24	22063	22654	-591
OCT 24	6846	1330	5516	OCT 24	24905	22034	2871
NOV 24	4441	6847	-2406	NOV 24	23221	24838	-1617
DEC 24	7325	4459	2866	DEC 24	25436	23162	2274





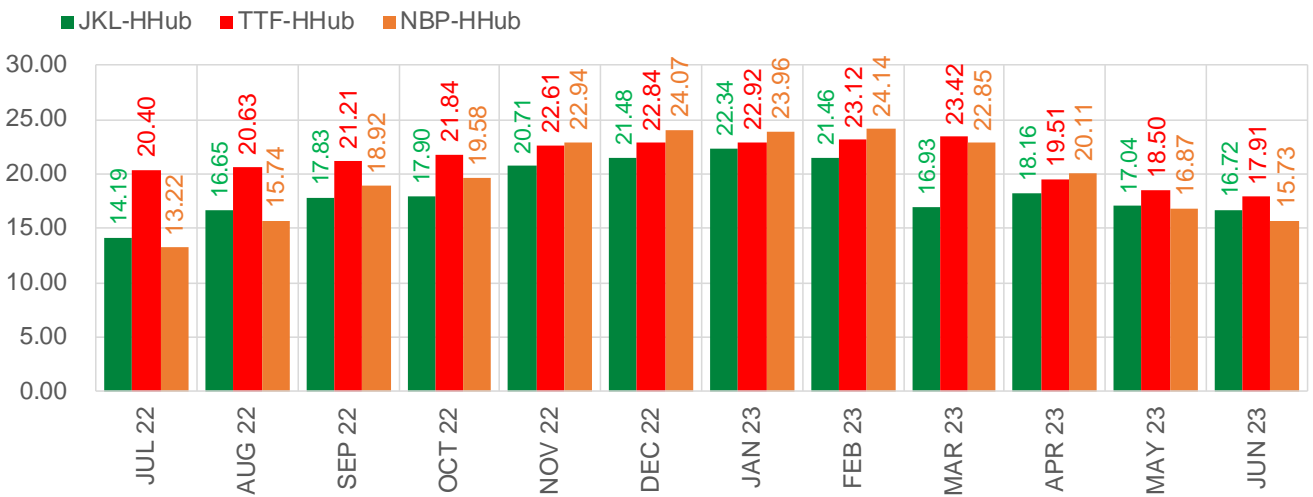
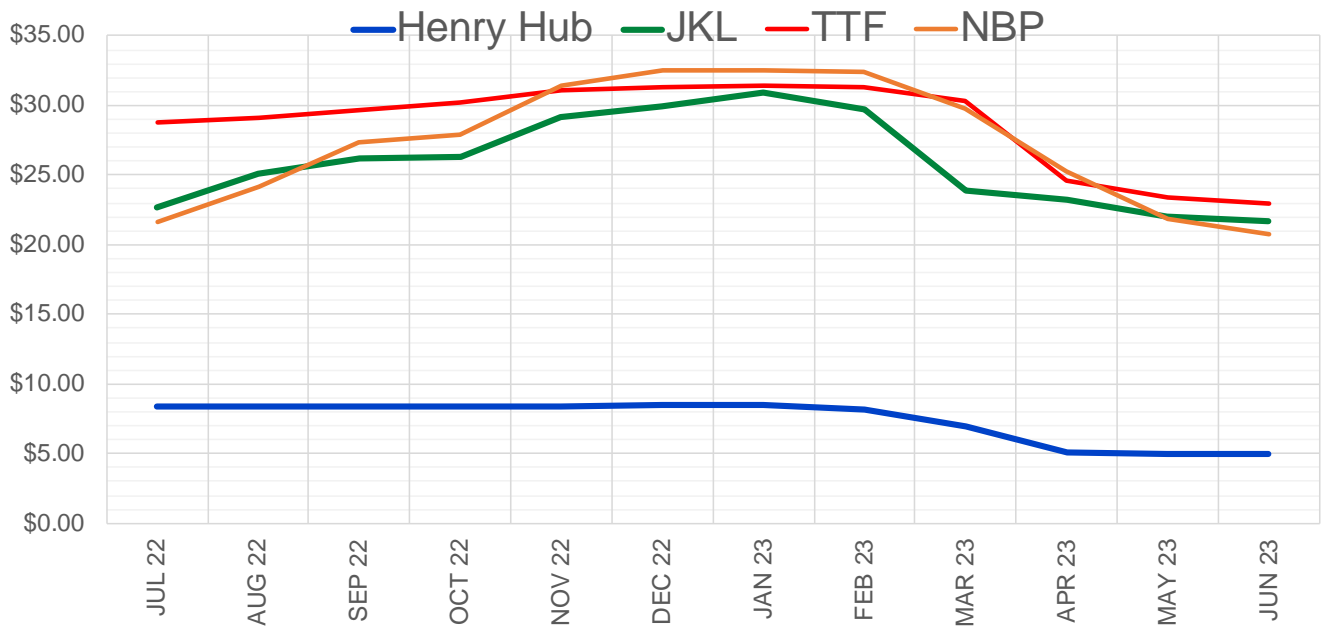
	Jun-22	Jul-22	Aug-22	Sep-22	Oct-22	Nov-22	Dec-22	Jan-23	Feb-23	Mar-23	Apr-23	May-23
<b>Current Price</b>	<b>\$8.727</b>	<b>\$8.712</b>	<b>\$8.673</b>	<b>\$8.640</b>	<b>\$8.668</b>	<b>\$8.735</b>	<b>\$8.810</b>	<b>\$8.467</b>	<b>\$7.105</b>	<b>\$5.176</b>	<b>\$4.980</b>	<b>\$5.034</b>
Last Week	\$8.083	\$8.178	\$8.171	\$8.136	\$8.115	\$8.176	\$8.298	\$8.397	\$8.068	\$6.774	\$4.911	\$4.725
vs. Last Week	\$0.644	\$0.534	\$0.502	\$0.504	\$0.553	\$0.559	\$0.512	\$0.070	-\$0.963	-\$1.598	\$0.069	\$0.309
4 Weeks Ago	\$7.244	\$7.355	\$7.354	\$7.299	\$7.299	\$7.358	\$7.493	\$7.600	\$7.320	\$6.166	\$4.538	\$4.393
vs. 4 Weeks Ago	\$1.483	\$1.357	\$1.319	\$1.341	\$1.369	\$1.377	\$1.317	\$0.867	-\$0.215	-\$0.990	\$0.442	\$0.641
Last Year	\$2.986	\$3.007	\$3.002	\$3.017	\$3.080	\$3.198	\$3.279	\$3.210	\$3.026	\$2.646	\$2.598	\$2.632
vs. Last Year	\$5.741	\$5.705	\$5.671	\$5.623	\$5.588	\$5.537	\$5.531	\$5.257	\$4.079	\$2.530	\$2.382	\$2.402

	Units	Cash Settled	Prompt Settle	Cash to Prompt
AGT Citygate	\$/MMBtu	8.50	8.36	-0.14
TETCO M3	\$/MMBtu	7.71	8.11	0.40
FGT Zone 3	\$/MMBtu	7.78	8.84	1.06
Zone 6 NY	\$/MMBtu	7.78	8.01	0.23
Chicago Citygate	\$/MMBtu	7.84	8.55	0.71
Michcon	\$/MMBtu	7.90	8.54	0.64
Columbia TCO Pool	\$/MMBtu	8.34	8.01	-0.33
Ventura	\$/MMBtu	8.80	8.42	-0.38
Rockies/Opal	\$/MMBtu	8.67	8.30	-0.38
El Paso Permian Basin	\$/MMBtu	7.37	8.09	0.72
Socal Citygate	\$/MMBtu	8.57	8.99	0.42
Malin	\$/MMBtu	8.09	8.47	0.38
Houston Ship Channel	\$/MMBtu	8.06	8.62	0.56
Henry Hub Cash	\$/MMBtu	8.25	8.41	0.16
AECO Cash	C\$/GJ	5.00	6.15	1.15
Station2 Cash	C\$/GJ	4.68	8.29	3.61
Dawn Cash	C\$/GJ	8.11	8.56	0.45

Source: CME, Bloomberg

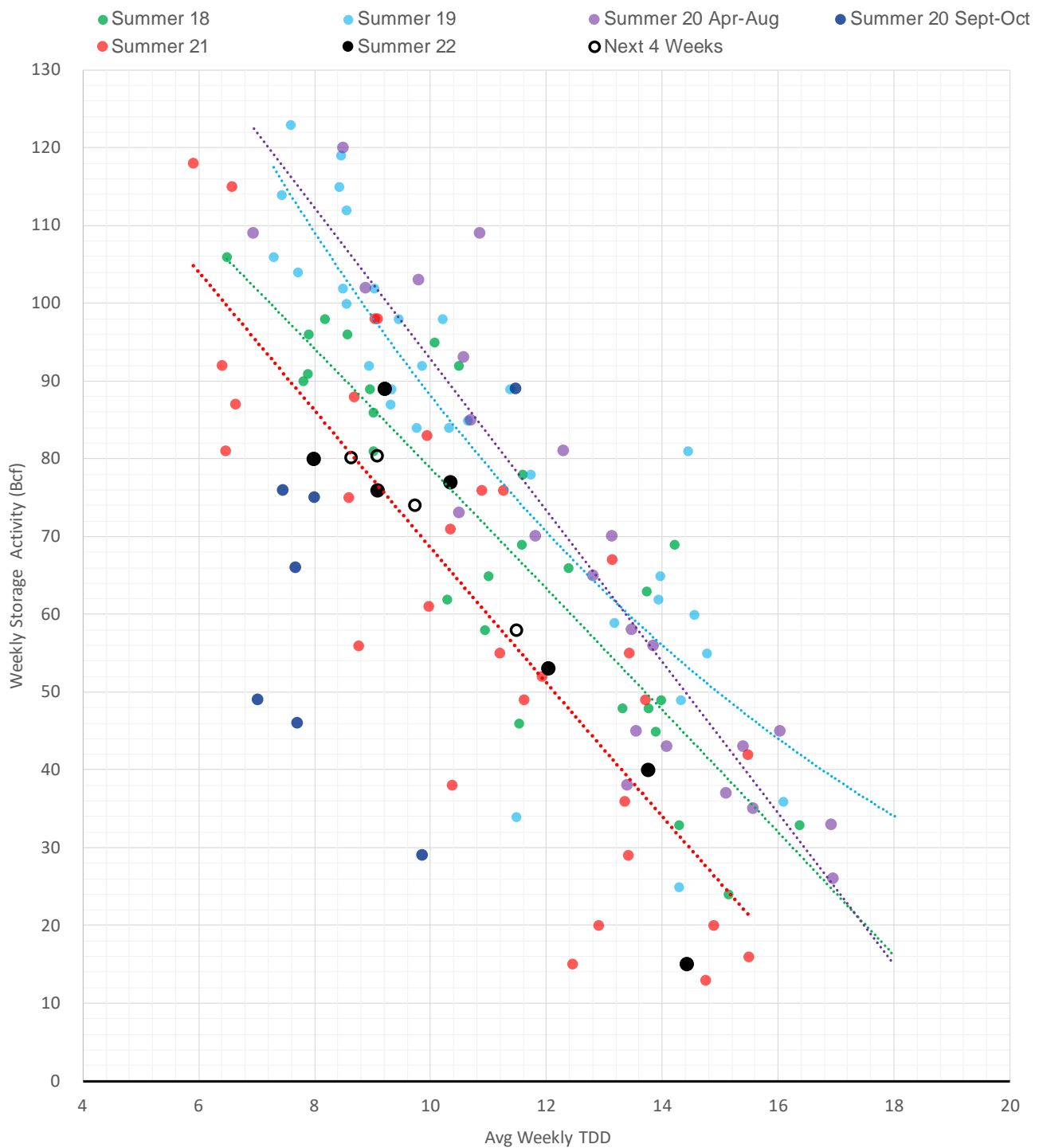
	Units	Current Price	vs. Last Week	vs. 4 Weeks Ago	vs. Last Year
NatGas Jul21/Oct21	\$/MMBtu	2.224	▲ 0.000	▲ 0.000	▲ 2.193
NatGas Oct21/Nov21	\$/MMBtu	0.361	▲ 0.000	▲ 0.000	▲ 0.298
NatGas Oct21/Jan22	\$/MMBtu	-1.817	▲ 0.000	▲ 0.000	▼ -2.079
NatGas Apr22/Oct22	\$/MMBtu	3.304	▼ -0.095	▲ 1.134	▲ 3.269
WTI Crude	\$/Bbl	115.07	▲ 4.780	▲ 9.900	▲ 48.750
Brent Crude	\$/Bbl	121.67	▲ 8.250	▲ 14.090	▲ 52.350
Fuel Oil, NY Harbour 1%	\$/Bbl	97.18	▲ 0.000	▲ 0.000	▲ 0.000
Heating Oil	cents/Gallon	400.29	▲ 23.410	▼ -20.200	▲ 195.840
Propane, Mt. Bel	cents/Gallon	1.23	▲ 0.004	▼ -0.048	▲ 0.409
Ethane, Mt. Bel	cents/Gallon	0.60	▲ 0.002	▲ 0.043	▲ 0.340
Coal, PRB	\$/MTon	12.30	▲ 0.000	▲ 0.000	▲ 0.000
Coal, PRB	\$/MMBtu	0.70			
Coal, ILB	\$/MTon	31.05	▲ 0.000	▲ 0.000	▲ 0.000
Coal, ILB	\$/MMBtu	1.32			

### Nat Gas Term Structure (\$MMBTU)



	JUL 22	AUG 22	SEP 22	OCT 22	NOV 22	DEC 22	JAN 23	FEB 23	MAR 23	APR 23	MAY 23	JUN 23
<b>Henry Hub</b>	\$8.437	\$8.435	\$8.402	\$8.370	\$8.426	\$8.445	\$8.531	\$8.218	\$6.928	\$5.119	\$4.937	\$4.995
<b>JKL</b>	\$22.625	\$25.085	\$26.230	\$26.265	\$29.140	\$29.925	\$30.875	\$29.675	\$23.855	\$23.280	\$21.975	\$21.715
<b>JKL-HHub</b>	\$14.188	\$16.650	\$17.828	\$17.895	\$20.714	\$21.480	\$22.344	\$21.457	\$16.927	\$18.161	\$17.038	\$16.720
<b>TTF</b>	\$28.836	\$29.068	\$29.615	\$30.207	\$31.040	\$31.287	\$31.447	\$31.342	\$30.346	\$24.632	\$23.438	\$22.905
<b>TTF-HHub</b>	\$20.399	\$20.633	\$21.213	\$21.837	\$22.614	\$22.842	\$22.916	\$23.124	\$23.418	\$19.513	\$18.501	\$17.910
<b>NBP</b>	\$21.655	\$24.176	\$27.317	\$27.953	\$31.370	\$32.519	\$32.491	\$32.360	\$29.782	\$25.233	\$21.807	\$20.722
<b>NBP-HHub</b>	\$13.218	\$15.741	\$18.915	\$19.583	\$22.944	\$24.074	\$23.960	\$24.142	\$22.854	\$20.114	\$16.870	\$15.727

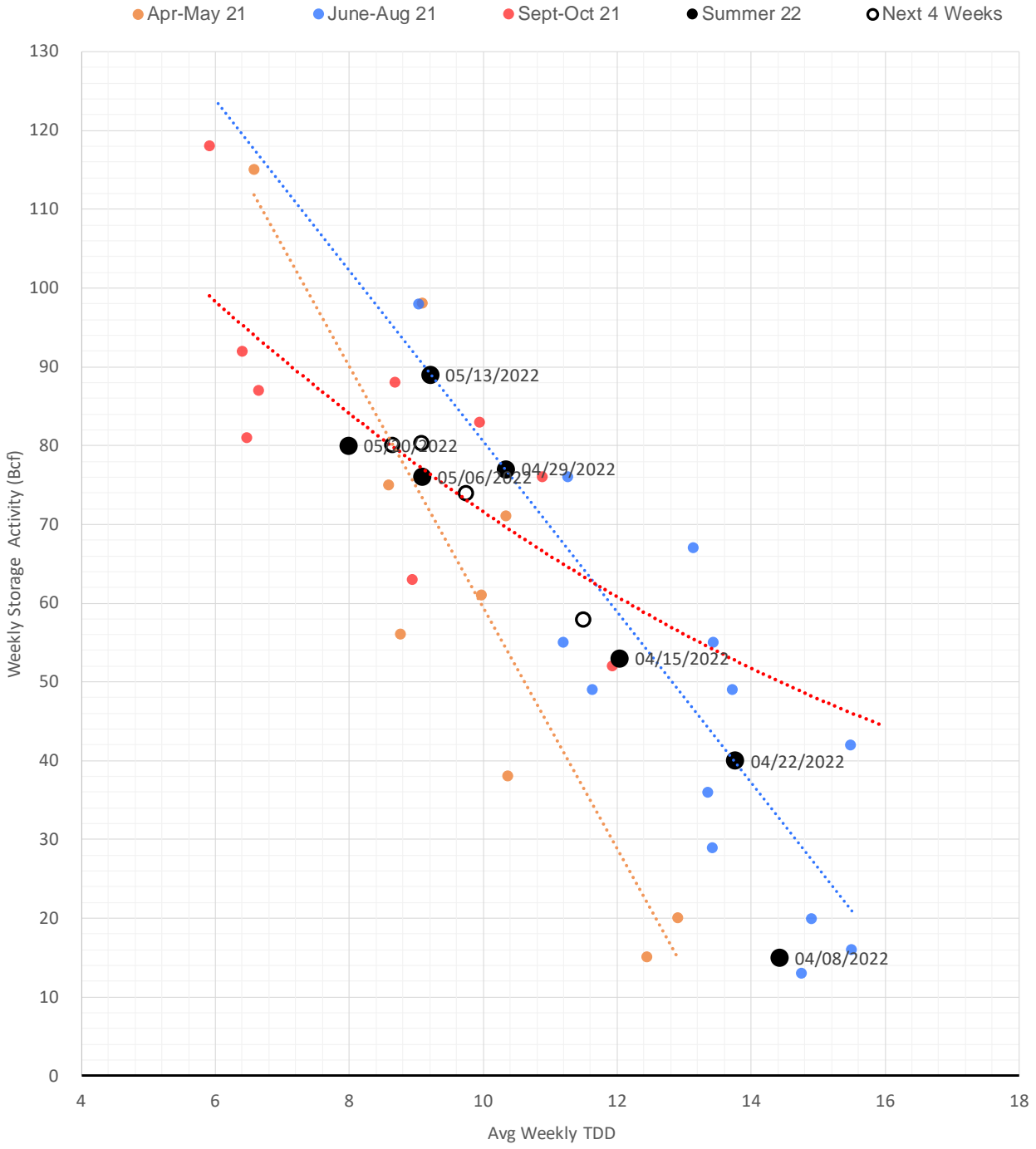
### Weather Storage Model - Next 4 Week Forecast



The risk of trading futures and options and other derivatives involves a substantial risk of loss and is not suitable for all persons. Each person must consider whether a particular trade, combination of trades, or strategy is suitable for that person's financial means and objectives. Past results are not necessarily indicative of future results. This communication may contain links to third party websites which are not under the control of and are not maintained by ION Energy Group, and ION Energy Group is not responsible for their content.

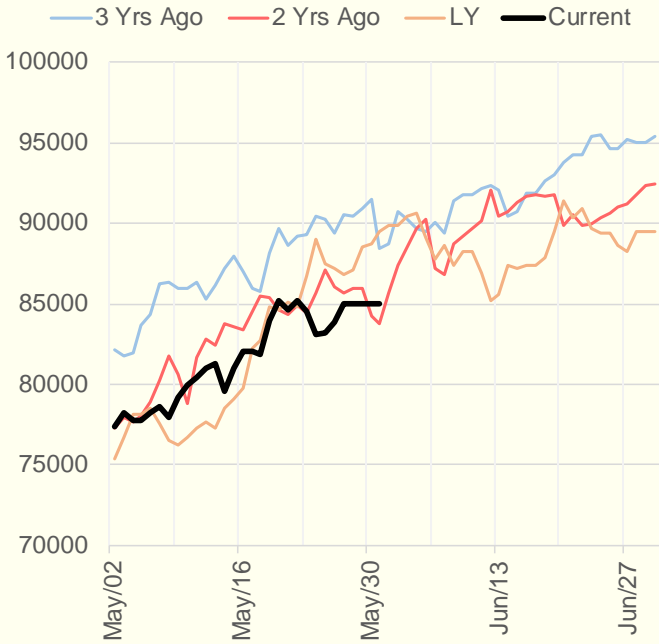


### Weather Storage Model for Summer 2021 & 2022

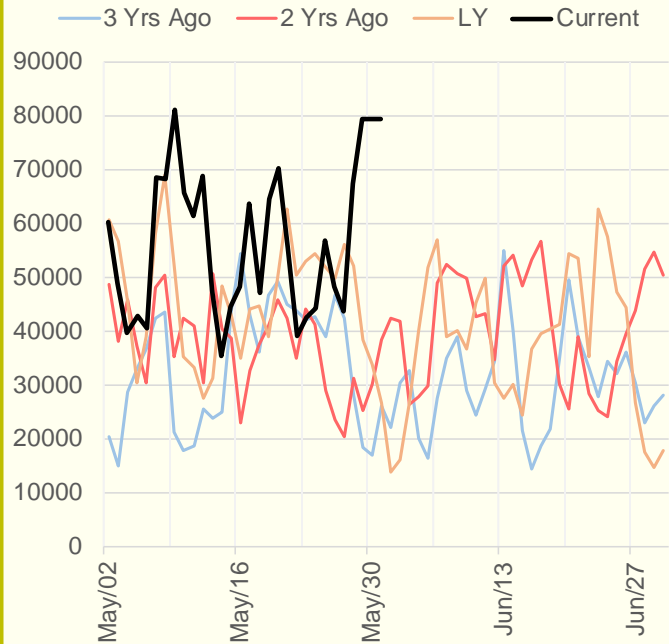


The risk of trading futures and options and other derivatives involves a substantial risk of loss and is not suitable for all persons. Each person must consider whether a particular trade, combination of trades, or strategy is suitable for that person's financial means and objectives. Past results are not necessarily indicative of future results. This communication may contain links to third party websites which are not under the control of and are not maintained by ION Energy Group, and ION Energy Group is not responsible for their content.

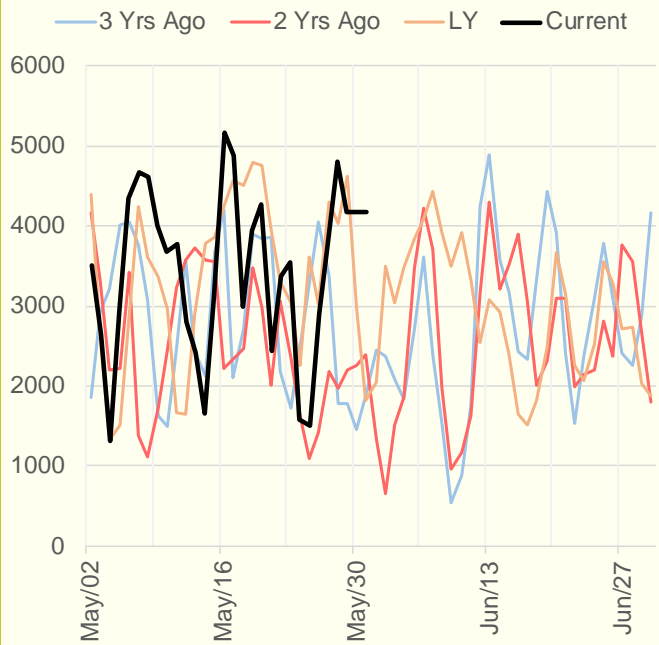
### NRC Nuclear Daily Output



### US Wind



### CALI Wind



### TEXAS Wind

