



Released May 20, 2022, by the National Agricultural Statistics Service (NASS), Agricultural Statistics Board, United States Department of Agriculture (USDA).

United States Cattle on Feed Up 2 Percent

Cattle and calves on feed for the slaughter market in the United States for feedlots with capacity of 1,000 or more head totaled 12.0 million head on May 1, 2022. The inventory was 2 percent above May 1, 2021. This is the highest May 1 inventory since the series began in 1996.

Placements in feedlots during April totaled 1.81 million head, 1 percent below 2021. Net placements were 1.76 million head. During April, placements of cattle and calves weighing less than 600 pounds were 355,000 head, 600-699 pounds were 270,000 head, 700-799 pounds were 415,000 head, 800-899 pounds were 489,000 head, 900-999 pounds were 210,000 head, and 1,000 pounds and greater were 70,000 head.

Marketings of fed cattle during April totaled 1.89 million head, 2 percent below 2021.

Other disappearance totaled 54,000 head during April, 2 percent below 2021.

Cattle on Feed Inventory, Placements, Marketings, and Other Disappearance on 1,000+ Capacity Feedlots – United States: May 1, 2021 and 2022

Item	2021	2022	Percent of previous year
	(1,000 head)	(1,000 head)	(percent)
On feed April 1	11,897	12,105	102
Placed on feed during April	1,825	1,809	99
Fed cattle marketed during April	1,936	1,893	98
Other disappearance during April	55	54	98
On feed May 1	11,731	11,967	102

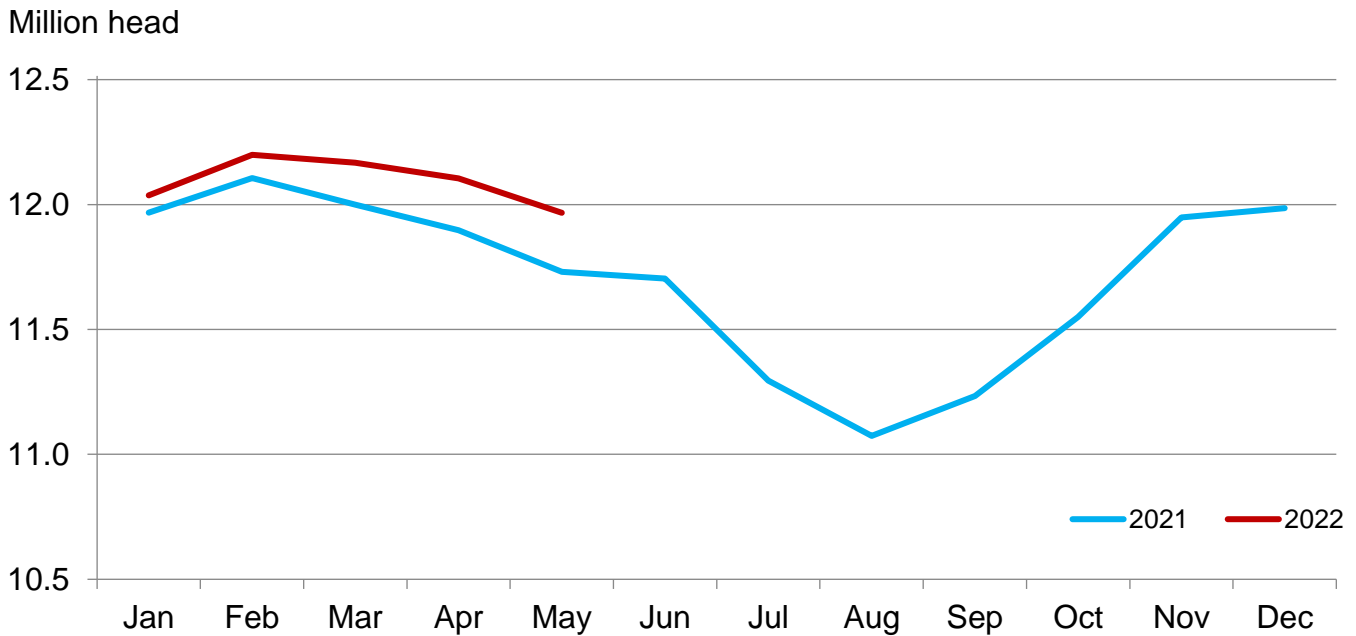
Cattle on Feed Inventory, Placements, Marketings, and Other Disappearance on 1,000+ Capacity Feedlots – United States: April 1, 2021 and 2022

Item	2021	2022	Percent of previous year
	(1,000 head)	(1,000 head)	(percent)
On feed March 1	12,000	12,168	101
Placed on feed during March	1,998	1,990	100
Fed cattle marketed during March	2,041	2,000	98
Other disappearance during March	60	53	88
On feed April 1	11,897	12,105	102

Cattle on Feed Inventory on 1,000+ Capacity Feedlots by Month – States and United States: 2021 and 2022

State	May 1, 2021	April 1, 2022	May 1, 2022		
			Inventory	Percent of previous year	Percent of previous month
	(1,000 head)	(1,000 head)	(1,000 head)	(percent)	(percent)
Arizona	276	285	287	104	101
California	545	565	570	105	101
Colorado	1,040	1,100	1,090	105	99
Idaho	295	305	300	102	98
Iowa	630	600	590	94	98
Kansas	2,470	2,510	2,480	100	99
Minnesota	110	100	100	91	100
Nebraska	2,530	2,660	2,650	105	100
Oklahoma	275	290	275	100	95
South Dakota	235	230	220	94	96
Texas	2,820	2,950	2,900	103	98
Washington	205	205	210	102	102
Other States	300	305	295	98	97
United States	11,731	12,105	11,967	102	99

Cattle on Feed Inventory on 1,000+ Capacity Feedlots – United States

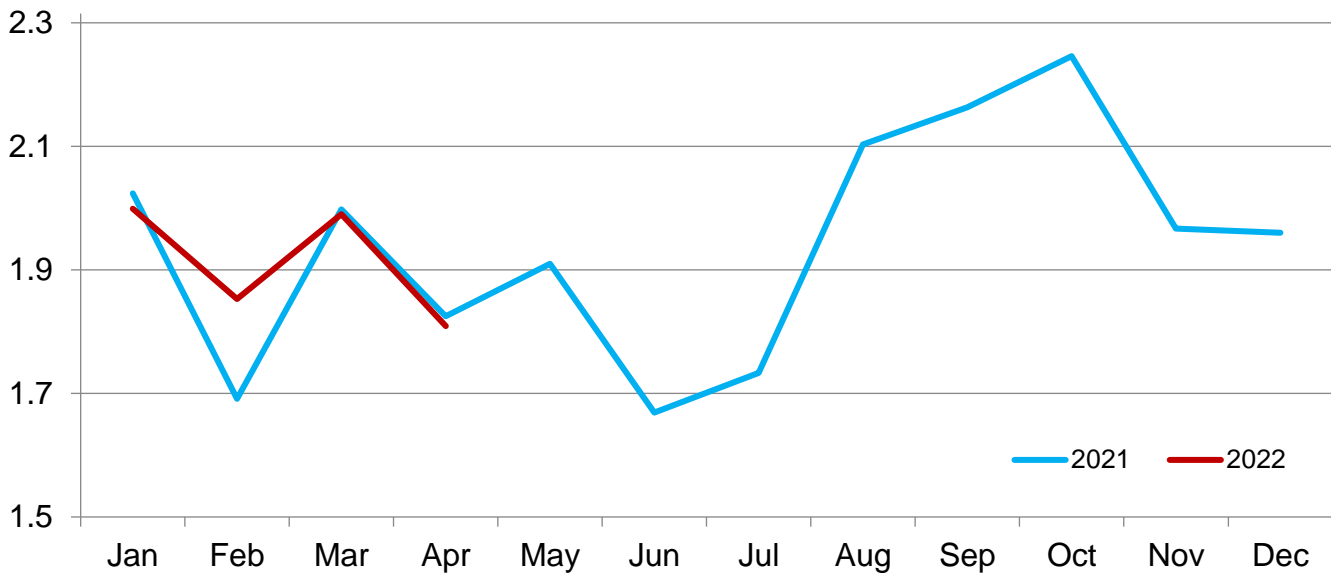


Cattle Placed on Feed on 1,000+ Capacity Feedlots by Month – States and United States: 2021 and 2022

State	During April 2021	During March 2022	During April 2022		
			Placements	Percent of previous year	Percent of previous month
	(1,000 head)	(1,000 head)	(1,000 head)	(percent)	(percent)
Arizona	28	31	29	104	94
California	62	69	74	119	107
Colorado	160	180	165	103	92
Idaho	43	37	35	81	95
Iowa	99	100	85	86	85
Kansas	435	490	430	99	88
Minnesota	13	15	14	108	93
Nebraska	425	470	440	104	94
Oklahoma	39	45	42	108	93
South Dakota	36	35	27	75	77
Texas	410	435	395	96	91
Washington	31	32	35	113	109
Other States	44	51	38	86	75
United States	1,825	1,990	1,809	99	91

Cattle Placed on 1,000+ Capacity Feedlots – United States

Million head



Cattle Placed on Feed by Weight Group on 1,000+ Capacity Feedlots and Month – States and United States: 2021 and 2022

State	During April 2021							
	Under 600 lbs	600-699 lbs	700-799 lbs	800-899 lbs	900+ lbs ¹	900-999 lbs	1,000+ lbs	Total
	(1,000 head)	(1,000 head)	(1,000 head)	(1,000 head)	(1,000 head)	(1,000 head)	(1,000 head)	(1,000 head)
Colorado	30	25	35	40	30	(D)	(D)	160
Kansas	45	55	130	135	70	(D)	(D)	435
Nebraska	30	45	95	145	110	(D)	(D)	425
Texas	150	80	85	70	25	(D)	(D)	410
Other States ...	125	45	75	95	55	(D)	(D)	395
United States ..	380	250	420	485	(X)	220	70	1,825
State	During March 2022							
	Under 600 lbs	600-699 lbs	700-799 lbs	800-899 lbs	900+ lbs ¹	900-999 lbs	1,000+ lbs	Total
	(1,000 head)	(1,000 head)	(1,000 head)	(1,000 head)	(1,000 head)	(1,000 head)	(1,000 head)	(1,000 head)
Colorado	35	30	45	45	25	(D)	(D)	180
Kansas	45	75	160	150	60	(D)	(D)	490
Nebraska	30	65	130	150	95	(D)	(D)	470
Texas	150	100	95	70	20	(D)	(D)	435
Other States ...	115	60	100	100	40	(D)	(D)	415
United States ..	375	330	530	515	(X)	180	60	1,990
State	During April 2022							
	Under 600 lbs	600-699 lbs	700-799 lbs	800-899 lbs	900+ lbs ¹	900-999 lbs	1,000+ lbs	Total
	(1,000 head)	(1,000 head)	(1,000 head)	(1,000 head)	(1,000 head)	(1,000 head)	(1,000 head)	(1,000 head)
Colorado	30	30	35	40	30	(D)	(D)	165
Kansas	45	60	125	135	65	(D)	(D)	430
Nebraska	30	50	95	155	110	(D)	(D)	440
Texas	140	80	85	65	25	(D)	(D)	395
Other States ...	110	50	75	94	50	(D)	(D)	379
United States ..	355	270	415	489	(X)	210	70	1,809

(D) Withheld to avoid disclosing data for individual operations.

(X) Not applicable.

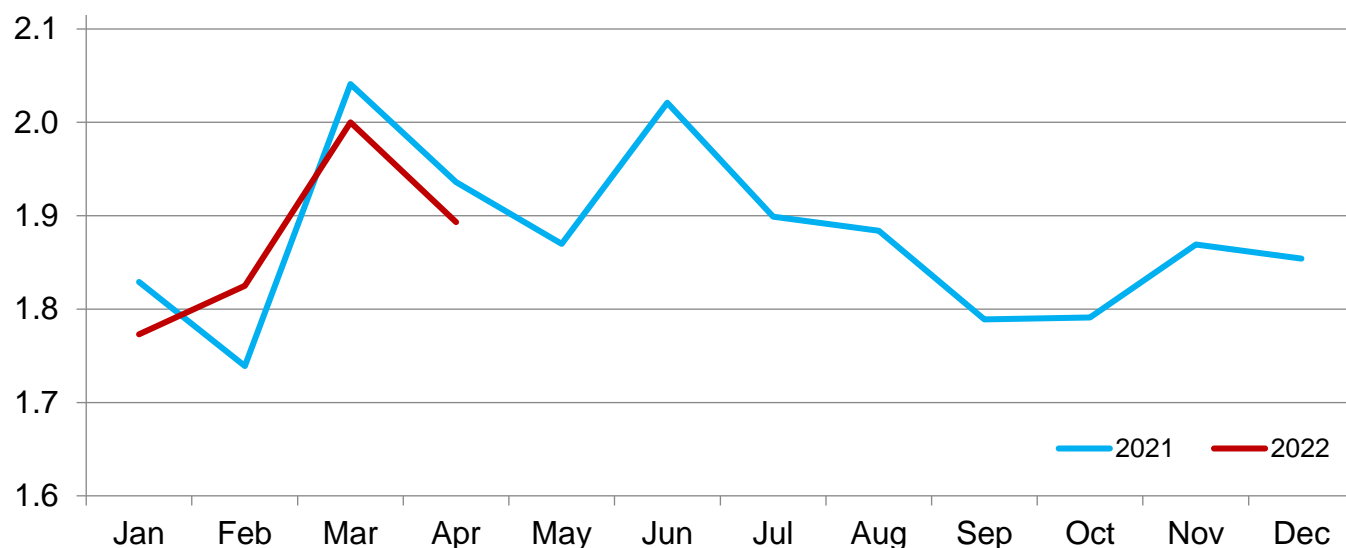
¹ The 900 pounds and greater weight group is the sum of 900-999 pounds and 1,000 pounds and greater weight groups.

Cattle Marketed on 1,000+ Capacity Feedlots by Month – States and United States: 2021 and 2022

State	During April 2021	During March 2022	During April 2022		
			Marketings	Percent of previous year	Percent of previous month
	(1,000 head)	(1,000 head)	(1,000 head)	(percent)	(percent)
Arizona	23	28	26	113	93
California	65	58	63	97	109
Colorado	175	195	170	97	87
Idaho	37	41	38	103	93
Iowa	96	108	93	97	86
Kansas	435	480	450	103	94
Minnesota	17	14	13	76	93
Nebraska	465	490	440	95	90
Oklahoma	63	54	56	89	104
South Dakota	38	37	35	92	95
Texas	450	415	435	97	105
Washington	30	31	29	97	94
Other States	42	49	45	107	92
United States	1,936	2,000	1,893	98	95

Cattle Marketed on 1,000+ Capacity Feedlots – United States

Million head



Cattle Other Disappearance on 1,000+ Capacity Feedlots by Month – States and United States: 2021 and 2022

State	During April 2021 (1,000 head)	During March 2022 (1,000 head)	During April 2022		
			Other disappearance (1,000 head)	Percent of previous year (percent)	Percent of previous month (percent)
Arizona	1	1	1	100	100
California	7	6	6	86	100
Colorado	5	5	5	100	100
Idaho	1	1	2	200	200
Iowa	3	2	2	67	100
Kansas	10	10	10	100	100
Minnesota	1	1	1	100	100
Nebraska	10	10	10	100	100
Oklahoma	1	1	1	100	100
South Dakota	3	3	2	67	67
Texas	10	10	10	100	100
Washington	1	1	1	100	100
Other States	2	2	3	150	150
United States	55	53	54	98	102

Terms and Definitions of Cattle on Feed Estimates

Cattle on feed are steers and heifers being fed a ration of grain, silage, hay and/or protein supplement for slaughter market that are expected to produce a carcass that will grade select or better. It excludes cattle being "backgrounded only" for later sale as feeders or later placement in another feedlot.

Placements are steers and heifers put into a feedlot, fed a ration which will produce a carcass that will grade select or better, and are intended for the slaughter market.

Marketings are steers and heifers shipped out of feedlots to a slaughter market.

Other disappearance includes death loss, movement from feedlots to pasture, and shipments to other feedlots for further feeding.

Statistical Methodology

Survey Procedures: During January and July all known feedlots in the United States with capacity of 1,000 or more head are surveyed to provide data for cattle on feed estimates. During the other months, all known feedlots from 16 States are surveyed. The 16 States account for approximately 98 percent of the cattle on feed in feedlots with capacity of 1,000 or more head. Individual State estimates are published monthly for 12 of the 16 States. Data collected from the remaining 4 States are used to establish the "Other States" estimates. These 4 States include Illinois, New Mexico, Oregon, and Wyoming. The "Other States" category represents all cattle on feed with a capacity of 1,000 or more head for the rest of the United States.

Estimating Procedures: These cattle on feed estimates were prepared by the Agricultural Statistics Board after reviewing recommendations and analysis submitted by Regional Field Offices. Regional and State survey data were reviewed for reasonableness with each other and with estimates from the previous month when establishing the current estimates.

Revision Policy: Revisions to previous estimates are made to improve month to month relationships. Estimates for the previous month are subject to revision in all States each month when current estimates are made. In February, all monthly estimates for the previous year, and the number of feedlots and annual marketings from two years ago are reviewed and subject to revisions. The reviews are primarily based on slaughter data, state check-off or brand data, and any other data that may have been received after the original estimate was made. Estimates will also be reviewed after data from the *Census of Agriculture* are available. No revisions will be made after that date and estimates become final.

Reliability: Since all 1,000+ capacity cattle on feed operators in every State are not included in the monthly survey, survey estimates are subject to sampling variability. Survey results are also subject to non-sampling errors such as omissions, duplications, and mistakes in reporting, recording, and processing the data. The effects of these errors cannot be measured directly. They are minimized through rigid quality controls in the data collection process and through a careful review of all reported data for consistency and reasonableness.

To assist users in evaluating the reliability of estimates in this report, the "**Root Mean Square Error**" is shown for selected items in the table on the following page. The "Root Mean Square Error" is a statistical measure based on past performance and is computed using the differences between first and latest estimates. The "Root Mean Square Error" for cattle on feed inventory estimates over the past 24 months is 0.0 percent. This means that chances are 2 out of 3 that the final estimate will not be above or below the current estimate of 12.0 million head by more than 0.0 percent. Chances are 9 out of 10 that the difference will not exceed 0.0 percent.

The table on the following page shows a 24-month record of the range of differences between first and latest estimates for selected items. Using estimates of number on feed as an example, changes between the first estimate and the latest estimate during the past 24 months have averaged 1,000 head, ranging from 0 to 6,000 head. During this period the initial estimate has been above the latest estimate 0 times and has been below the latest estimate 5 times. This does not imply that the initial estimate is likely to understate or overstate final inventory.

Reliability of Monthly Cattle on Feed Estimates

[Based on data for the past 24 months]

Item	Root mean square error	90 percent confidence level	Difference between first and latest estimate				
			Average	Smallest	Largest	Months	
						Below latest	Above latest
	(percent)	(percent)	(1,000)	(1,000)	(1,000)	(number)	(number)
On feed	0.0	0.0	1	0	6	5	0
Placements	0.2	0.4	3	0	15	8	7
Marketings	0.2	0.4	2	0	15	5	7

Information Contacts

Listed below are the commodity specialists in the Livestock Branch of the National Agricultural Statistics Service to contact for additional information. E-mail inquiries may be sent to nass@usda.gov.

Travis Averill, Chief, Livestock Branch	(202) 692-0069
Scott Hollis, Head, Livestock Section	(202) 690-2424
Sherry Bertramsen – Livestock Slaughter	(202) 690-8632
Ryan Cowen – Cattle, Cattle on Feed	(202) 720-3040
Anthony Fischer – Hogs and Pigs	(202) 720-3106
Logan Hartley-Sanguinett – Sheep and Goats	(202) 690-3236
Mike Miller – Milk Production and Milk Cows	(202) 720-3278
Suzanne Richards – Dairy Products	(202) 720-4448

Access to NASS Reports

For your convenience, you may access NASS reports and products the following ways:

- All reports are available electronically, at no cost, on the NASS web site: www.nass.usda.gov.
- Both national and state specific reports are available via a free e-mail subscription. To set-up this free subscription, visit www.nass.usda.gov and click on “National” or “State” in upper right corner above “search” box to create an account and select the reports you would like to receive.
- Cornell’s Mann Library has launched a new website housing NASS’s and other agency’s archived reports. The new website, <https://usda.library.cornell.edu>. All email subscriptions containing reports will be sent from the new website, <https://usda.library.cornell.edu>. To continue receiving the reports via e-mail, you will have to go to the new website, create a new account and re-subscribe to the reports. If you need instructions to set up an account or subscribe, they are located at: <https://usda.library.cornell.edu/help>. You should whitelist notifications@usda-esmis.library.cornell.edu in your email client to avoid the emails going into spam/junk folders.

For more information on NASS surveys and reports, call the NASS Agricultural Statistics Hotline at (800) 727-9540, 7:30 a.m. to 4:00 p.m. ET, or e-mail: nass@usda.gov.

The U.S. Department of Agriculture (USDA) prohibits discrimination against its customers, employees, and applicants for employment on the basis of race, color, national origin, age, disability, sex, gender identity, religion, reprisal, and where applicable, political beliefs, marital status, familial or parental status, sexual orientation, or all or part of an individual's income is derived from any public assistance program, or protected genetic information in employment or in any program or activity conducted or funded by the Department. (Not all prohibited bases will apply to all programs and/or employment activities.)

If you wish to file a Civil Rights program complaint of discrimination, complete the [USDA Program Discrimination Complaint Form](#) (PDF), found online at www.ascr.usda.gov/filing-program-discrimination-complaint-usda-customer, or at any USDA office, or call (866) 632-9992 to request the form. You may also write a letter containing all of the information requested in the form. Send your completed complaint form or letter to us by mail at U.S. Department of Agriculture, Director, Office of Adjudication, 1400 Independence Avenue, S.W., Washington, D.C. 20250-9410, by fax (202) 690-7442 or email at program.intake@usda.gov.