

# CFTC COMMITMENT OF TRADERS REPORT

As of 6/21/2022

## TRADITIONAL FUNDS net position changes

Wed to Tue, in 000 contracts

	Corn	Bean	Meal	Oil	Chi. Wheat	KC Wheat	Min Wheat
Futures Only	(19.6)	(4.3)	6.5	(5.9)	(1.4)	(3.8)	(0.8)
Futures & Options Combined	(17.9)	(12.2)	8.2	(7.6)	(2.6)	(4.4)	(1.4)

## TRADITIONAL COMMERCIAL net position changes

	Corn	Bean	Meal	Oil	Chi. Wheat	KC Wheat	Min Wheat
Futures Only	17.7	2.7	(5.1)	9.2	2.7	5.1	3.2
Futures & Options Combined	21.2	11.3	(6.5)	11.1	4.3	6.3	3.8

## MANAGED MONEY net position changes

	Corn	Bean	Meal	Oil	Chi. Wheat	KC Wheat	Min Wheat
Futures Only	(11.5)	(9.1)	7.2	(11.2)	(3.7)	(3.8)	(0.7)
Futures & Options Combined	(12.9)	(8.7)	7.9	(12.1)	(3.0)	(3.8)	(0.8)

## SWAP DEALERS net position changes

	Corn	Bean	Meal	Oil	Chi. Wheat	KC Wheat	Min Wheat
Futures Only	(9.5)	(0.9)	(1.2)	(2.1)	(0.7)	(0.6)	0.3
Futures & Options Combined	(8.1)	0.8	(1.9)	(2.0)	(0.2)	(0.2)	0.4

## PRODUCERS/END USERS net position changes

	Corn	Bean	Meal	Oil	Chi. Wheat	KC Wheat	Min Wheat
Futures Only	27.3	3.6	(3.9)	11.4	3.3	5.6	2.9
Futures & Options Combined	29.4	10.5	(4.5)	13.1	4.4	6.5	3.4

## INDEX net position changes

	Corn	Bean	Meal	Oil	Chi. Wheat	KC Wheat	Min Wheat
Futures & Options Combined	(11.3)	(1.3)	2.3	(2.0)	(3.8)	(2.1)	NA

## SUPPLEMENTAL NON-COMMERCIAL net position changes

	Corn	Bean	Meal	Oil	Chi. Wheat	KC Wheat	Min Wheat
Futures & Options Combined	(13.8)	(11.3)	4.8	(6.6)	(1.1)	(3.5)	NA

## OPEN INTEREST net position changes

Wed to Tue, in 000 contracts

	Corn	Bean	Meal	Oil	Chi. Wheat	KC Wheat	Min Wheat
Futures Only	(9.4)	(8.9)	18.4	(1.4)	(16.6)	(4.6)	(1.4)
Futures & Options Combined	(15.0)	(11.6)	21.2	(2.0)	(12.7)	(2.9)	(1.5)

Source: CFTC and FI

Wed to Tue, in 000 contracts

6/25/2022

**COMMITMENT OF TRADERS  
FUTURES ONLY NET POSITIONS  
AS OF 06/21/2022  
(IN THOUSAND CONTRACTS)**

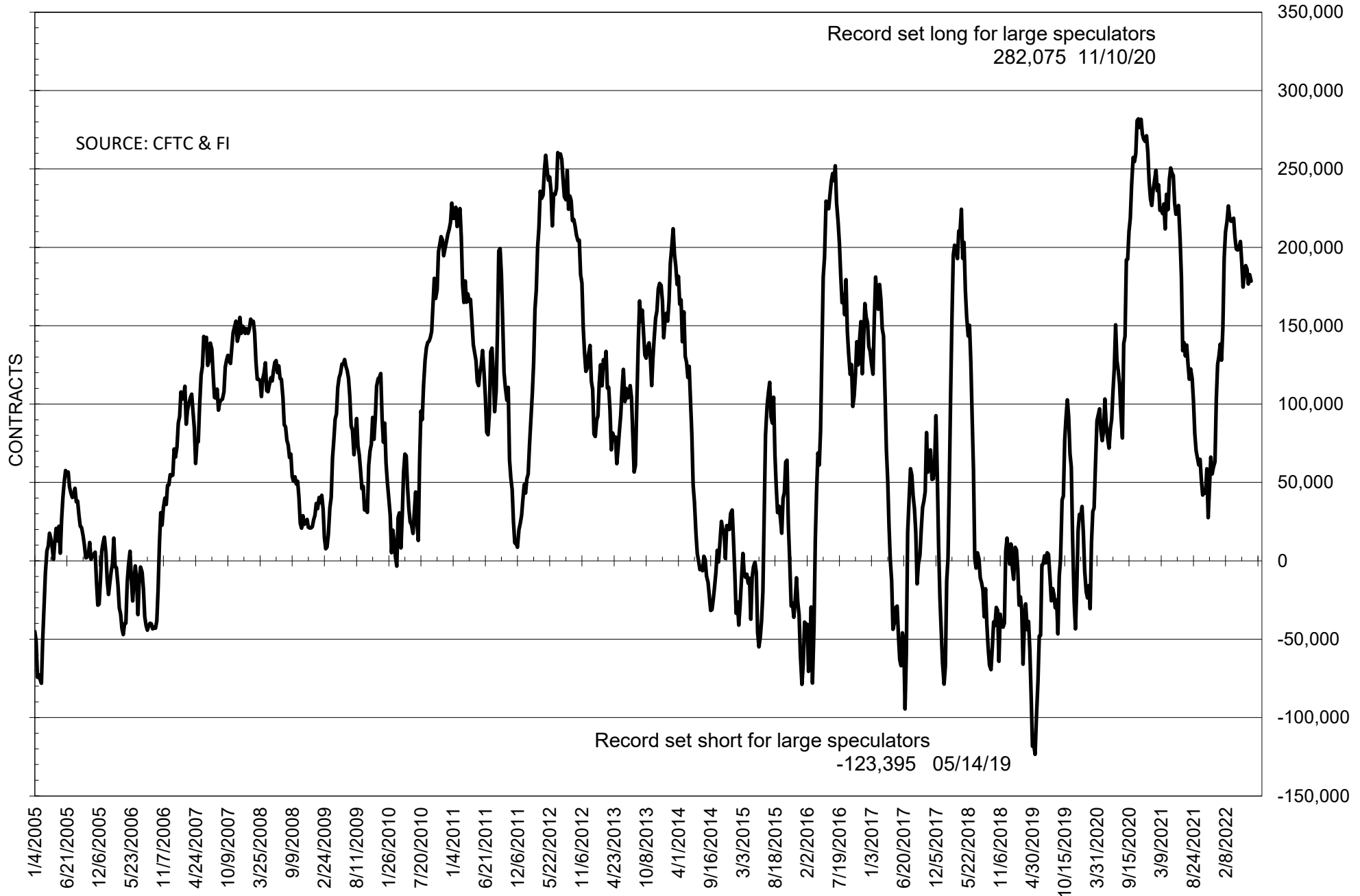
	COMMERCIAL				(FUND) NON COMMERCIAL				(SPEC) NON-REPORTABLE			
	21-Jun	14-Jun	7-Jun	31-May	21-Jun	14-Jun	7-Jun	31-May	21-Jun	14-Jun	7-Jun	31-May
	<b>WHEAT</b>											
Chicago	-15.4	-18.1	-19.9	-18.6	19.1	20.4	23.9	22.3	-3.7	-2.3	-4.0	-3.7
Kansas City	-26.0	-31.1	-32.9	-36.7	29.5	33.4	34.0	36.3	-3.5	-2.3	-1.1	0.5
Minneapolis	-20.4	-23.6	-25.4	-25.9	16.9	17.8	18.5	20.6	3.5	5.9	6.9	5.3
All Wheat	-61.9	-72.8	-78.2	-81.3	65.5	71.6	76.4	79.2	-3.7	1.2	1.8	2.1
<b>CORN</b>	-326.5	-344.2	-337.1	-353.3	380.2	399.8	391.3	404.2	-53.7	-55.6	-54.1	-50.9
<b>OATS</b>	#VALUE!	#VALUE!	#VALUE!	#VALUE!	#VALUE!	#####	#VALUE!	#VALUE!	#VALUE!	#VALUE!	#VALUE!	#VALUE!
<b>SOYBEANS</b>	-153.0	-155.7	-148.4	-158.8	178.4	182.7	176.6	186.1	-25.4	-27.0	-28.3	-27.3
<b>SOY OIL</b>	-77.9	-87.1	-95.3	-92.3	67.5	73.4	78.6	75.0	10.3	13.7	16.6	17.2
<b>SOY MEAL</b>	-119.8	-114.7	-115.3	-109.4	95.4	88.8	89.7	80.8	24.4	25.9	25.6	28.6

Oats positions thin to be reported

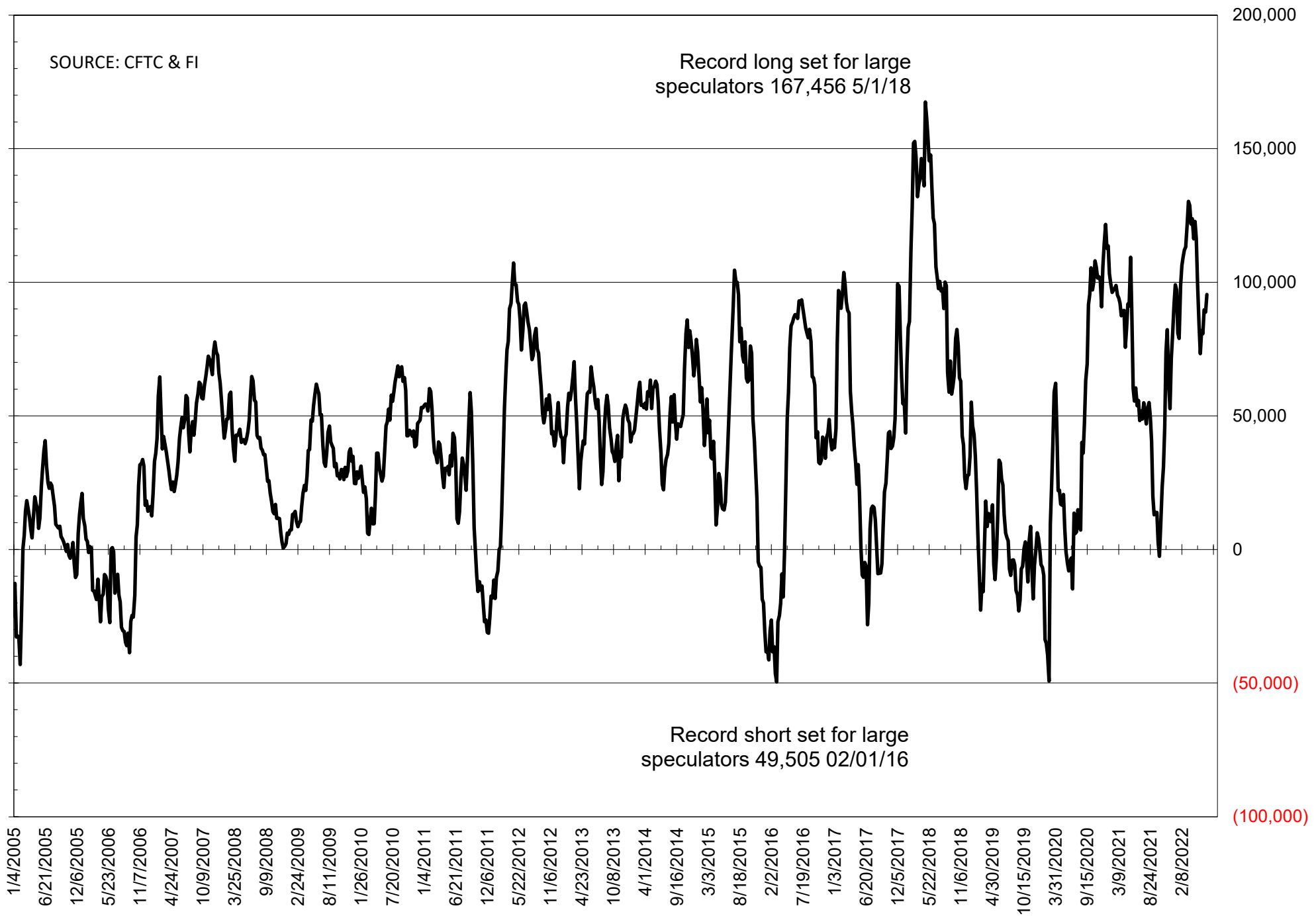
	TOTAL OPEN INTEREST				NEARBY FUTURES PRICE					21-Jun-22 LAST REPORTED % HELD BY TRADERS			
	21-Jun	14-Jun	7-Jun	31-May	N Latest	N 21-Jun	N 14-Jun	N 7-Jun	N 31-May	LARGE FUND		SMALL	
										LONG	SHORT	LONG	SHORT
<b>WHEAT</b>													
Chicago	320326	336890	333705	331136	923.75	923.75	1050.25	1071.75	1087.50	0%	26%	0%	11%
Kansas City	173165	177793	180335	180591	992.50	992.50	1142.25	1149.25	1165.50	0%	14%	0%	14%
Minneapolis	68258	69679	69232	73707	1070.75	1070.75	1208.50	1227.25	1245.50	0%	3%	0%	15%
<b>CORN</b>	1512152	1521565	1557167	1564217	750.25	750.25	768.25	757.00	753.50	0%	8%	0%	13%
<b>OATS</b>	#VALUE!	#VALUE!	#VALUE!	#VALUE!	597.00	597.00	666.75	668.00	669.75	0%	#VALUE!	0%	#VALUE!
<b>SOYBEANS</b>	745494	754428	760444	753373	1610.75	1610.75	1698.50	1728.25	1683.25	30%	6%	7%	10%
<b>SOY OIL</b>	387319	388690	399283	383135	69.75	69.75	78.28	81.44	77.92	0%	8%	0%	6%
<b>SOY MEAL</b>	403330	384925	380689	370669	432.60	432.60	411.00	417.40	414.80	0%	4%	0%	6%

SOURCE: CFTC & FI

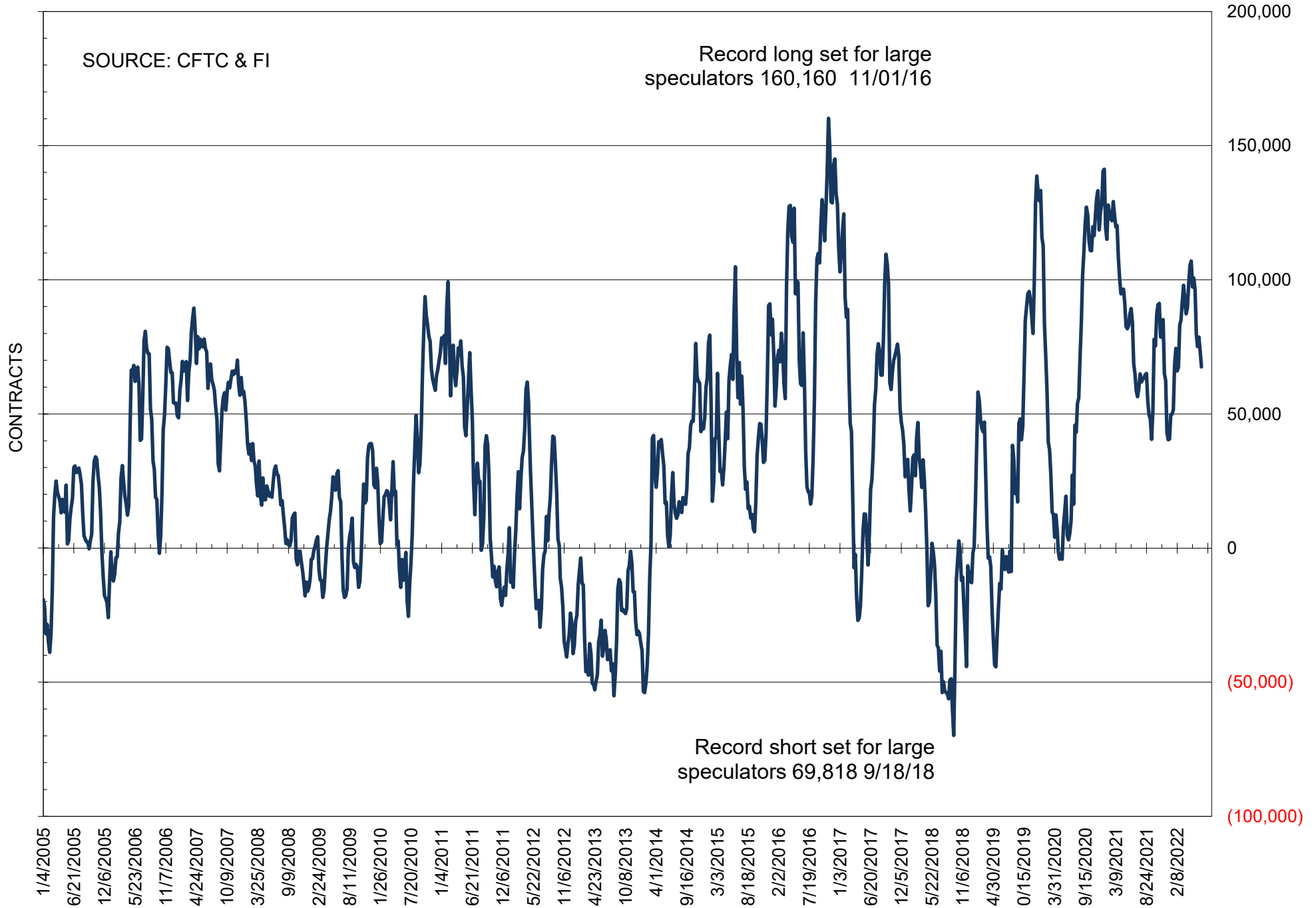
# NET POSITION OF FUTURES ONLY LARGE SPECS IN SOYBEANS



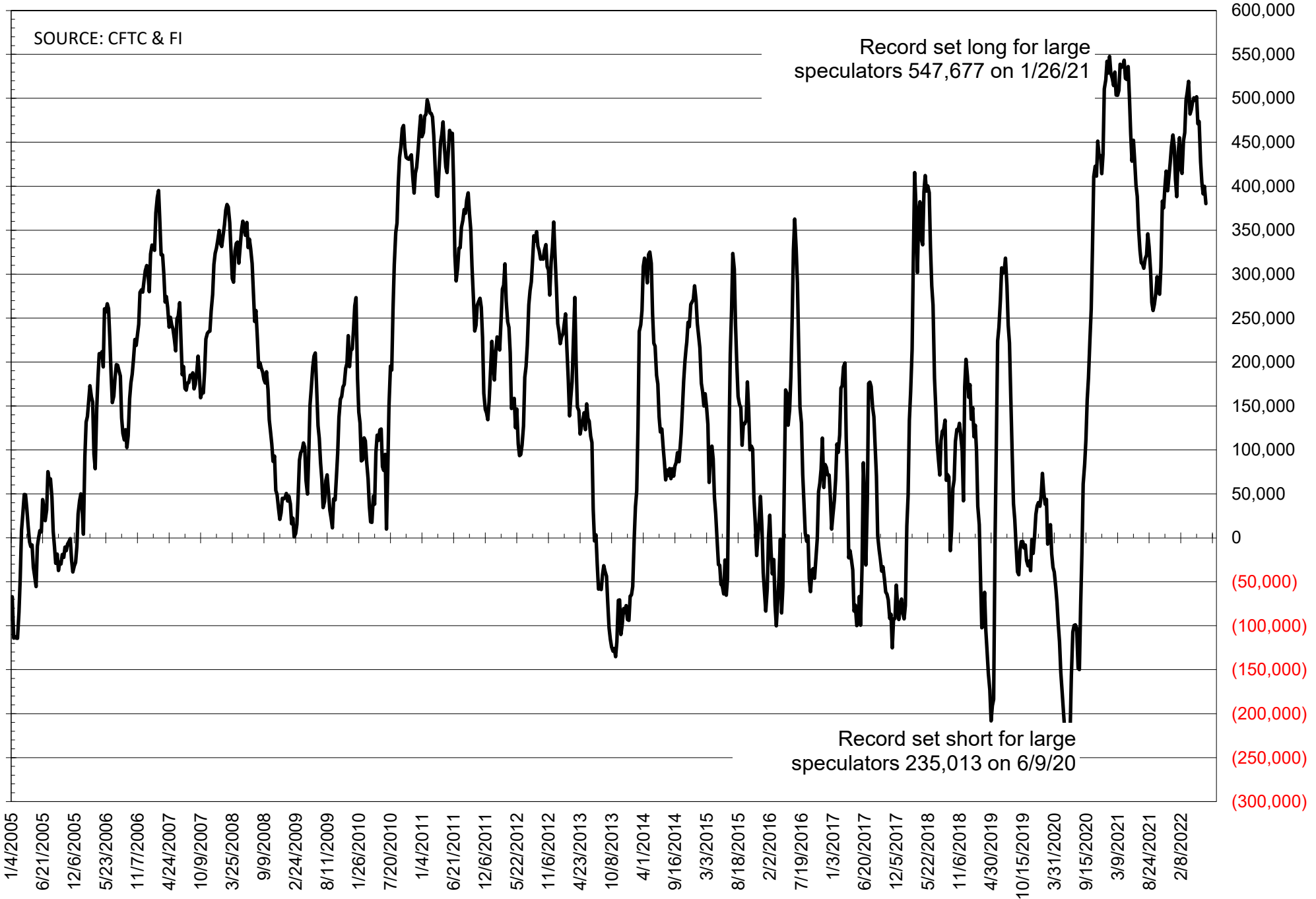
# NET POSITION OF FUTURES ONLY LARGE SPECS IN SOYMEAL



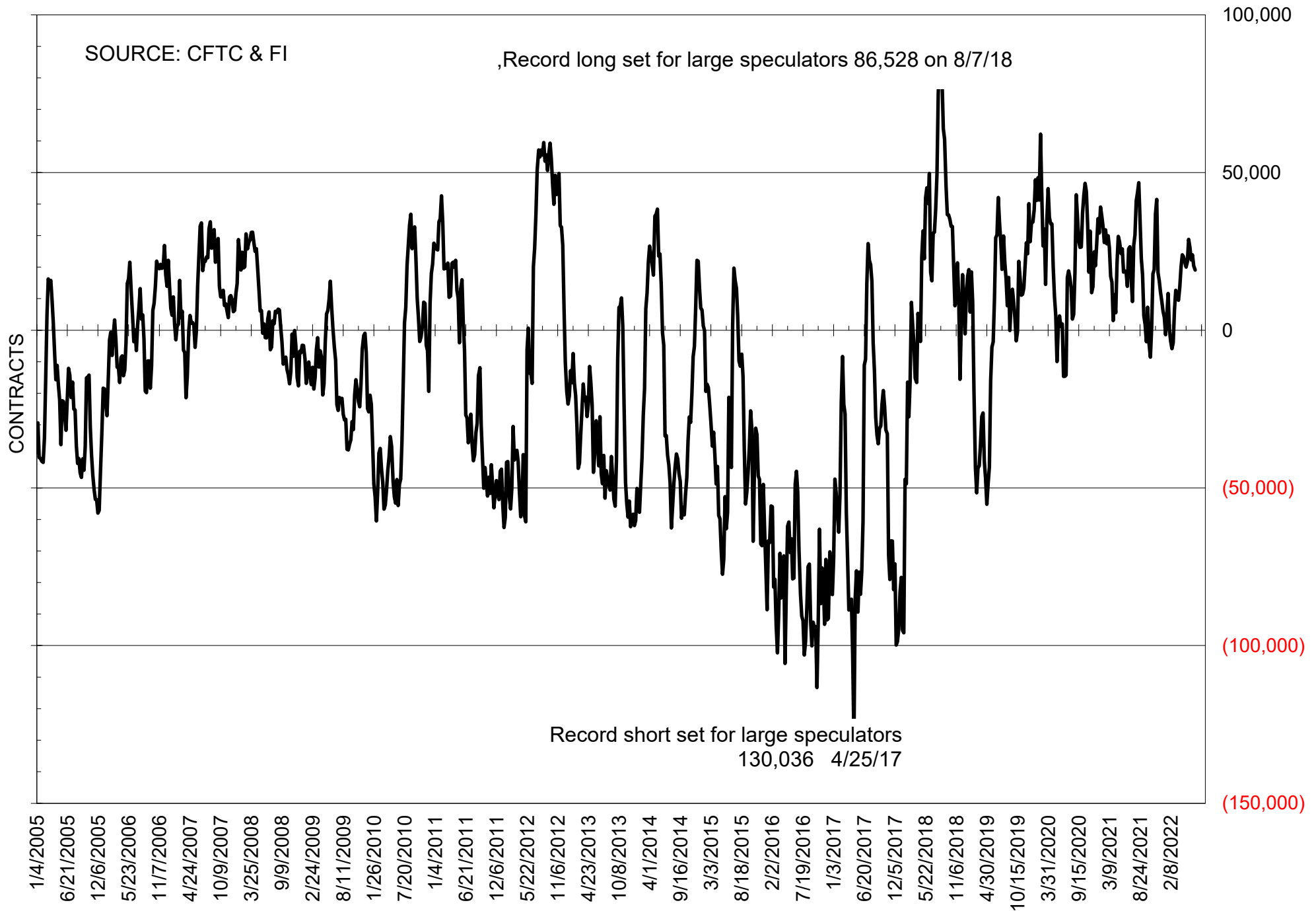
# NET POSITION OF FUTURES ONLY LARGE SPECS IN SOYOIL



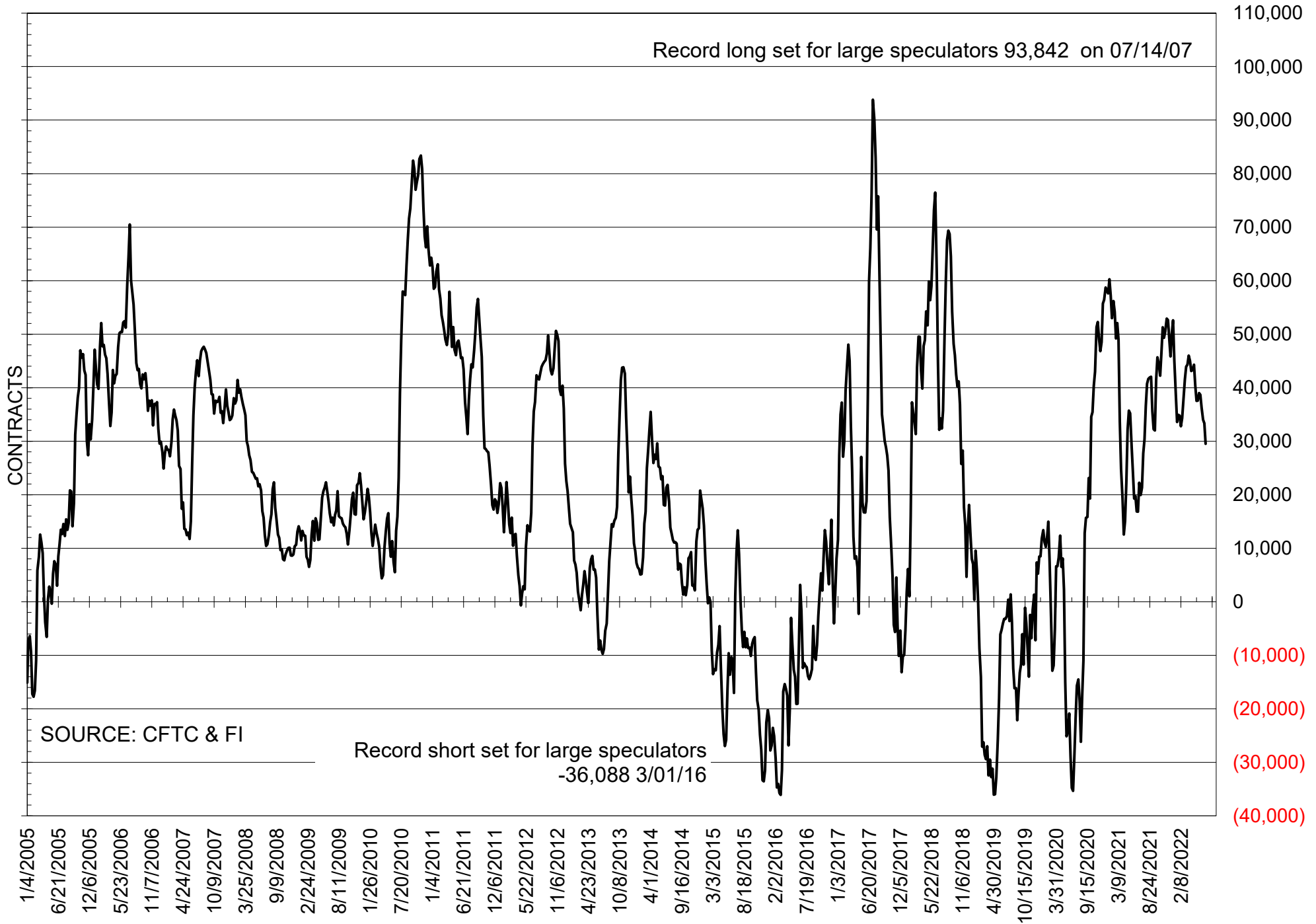
# NET POSITION OF LARGE SPECULATORS IN CORN



# NET POSITION OF FUTURES ONLY LARGE SPECS IN CHICAGO WHEAT

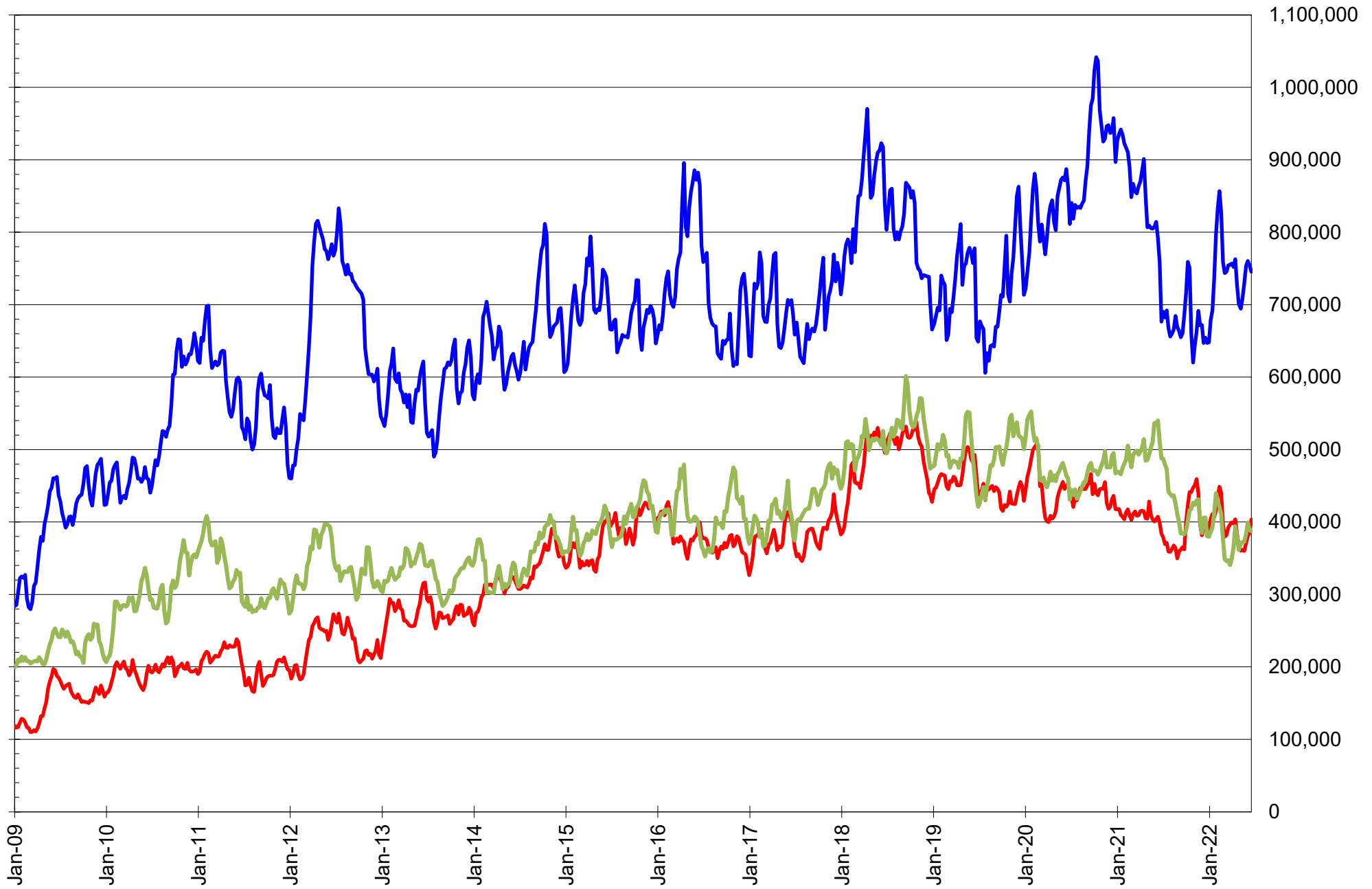


# NET POSITION OF LARGE SPECULATORS IN KANSAS CITY WHEAT





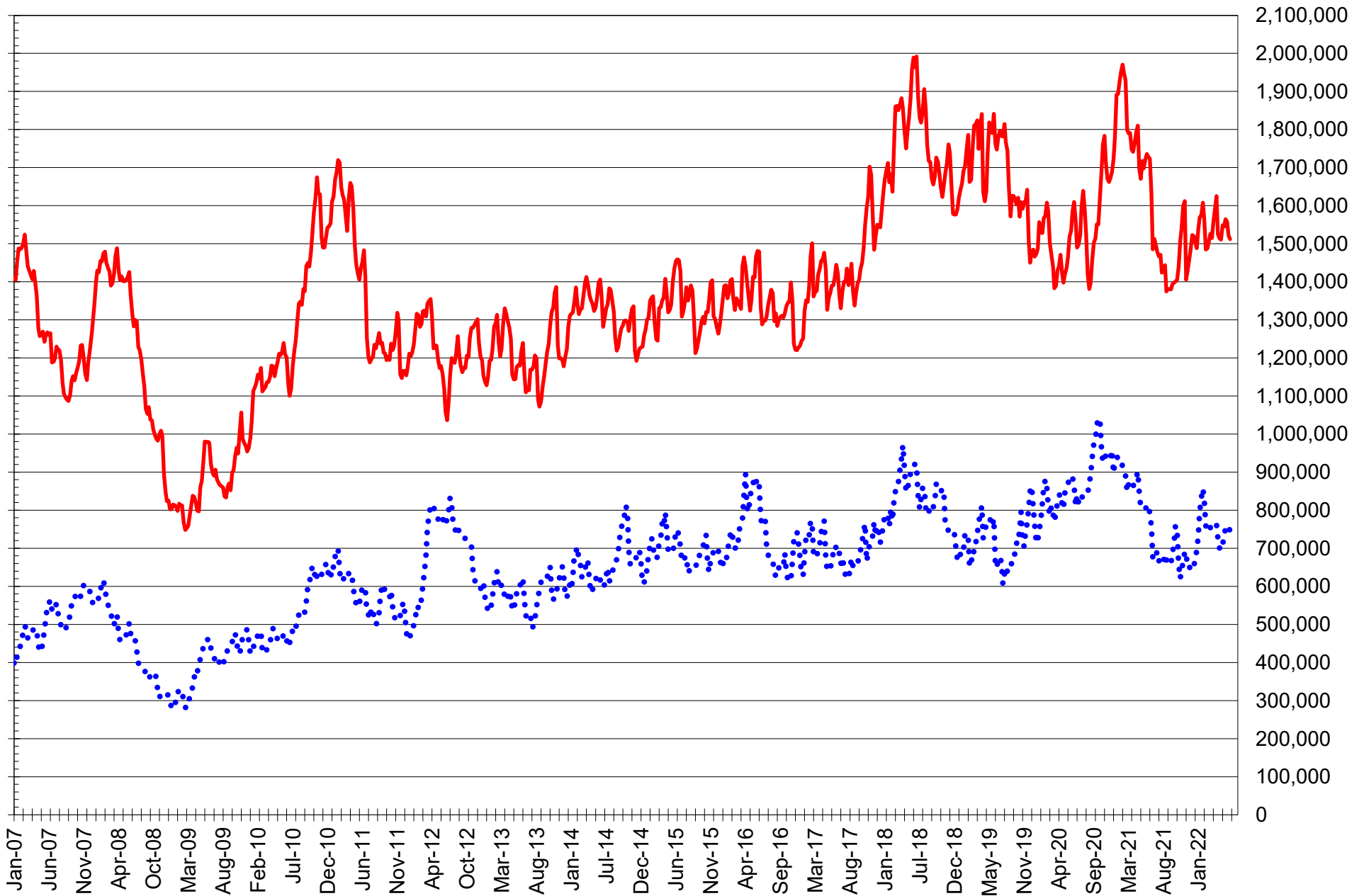
# TOTAL OPEN INTEREST IN SOYBEANS, MEAL AND OIL, FUTURES ONLY



SOURCE: CFTC & FI

— SOYBEANS — SOYBEAN MEAL — SOYBEAN OIL

# TOTAL OPEN INTEREST IN CORN AND SOYBEANS, FUTURES ONLY



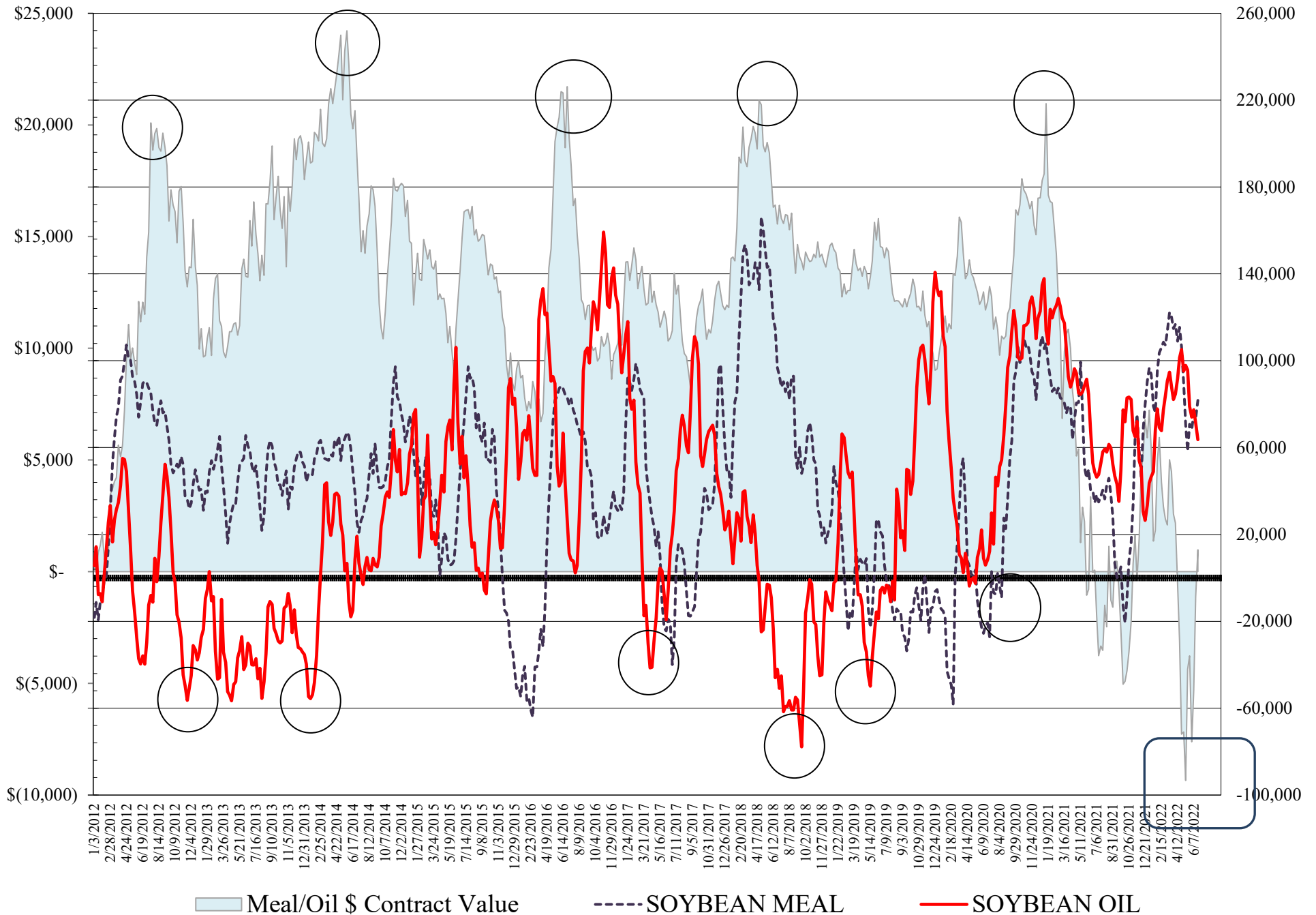
SOURCE: CFTC & FI

— CORN

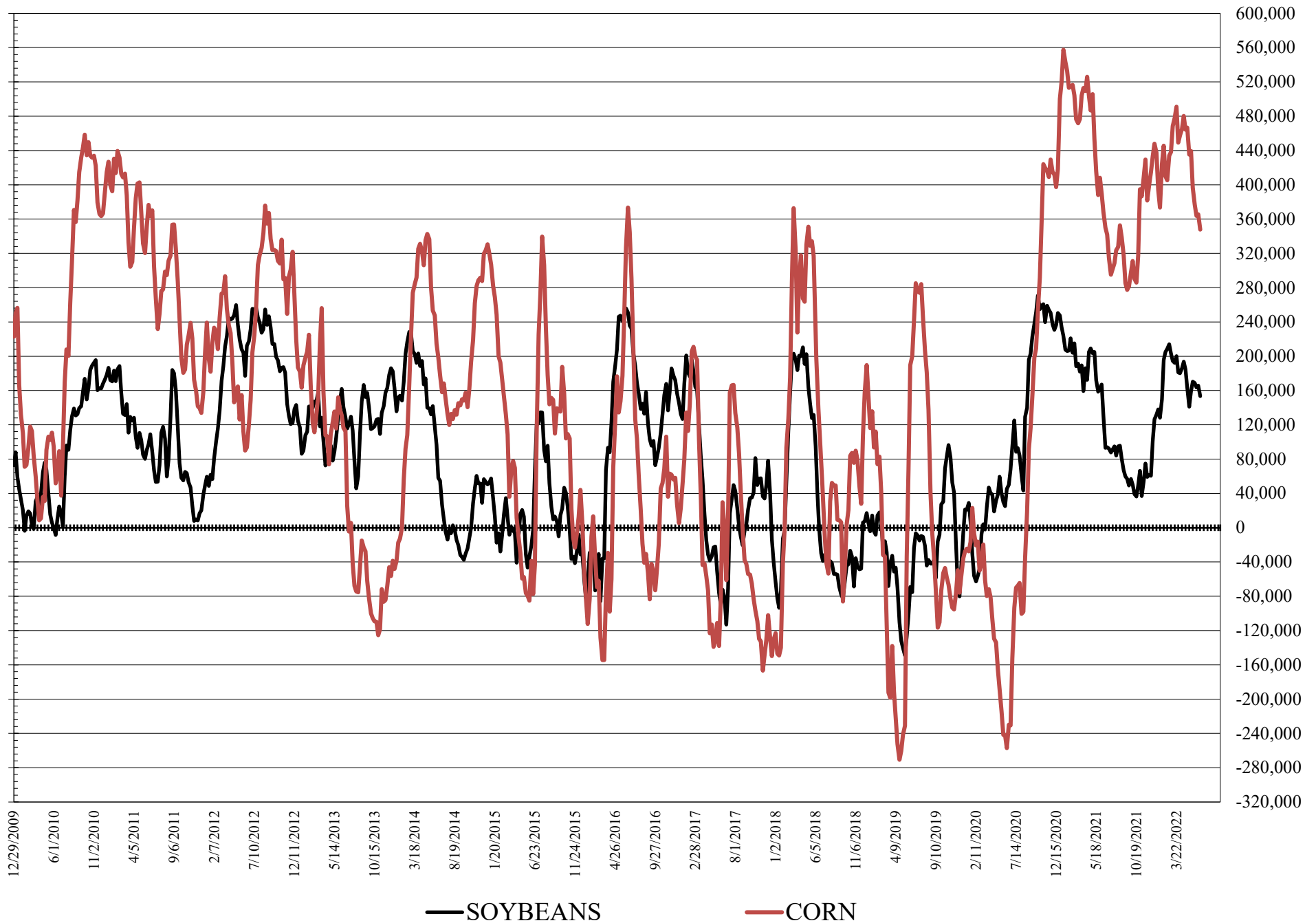
•••• SOYBEANS



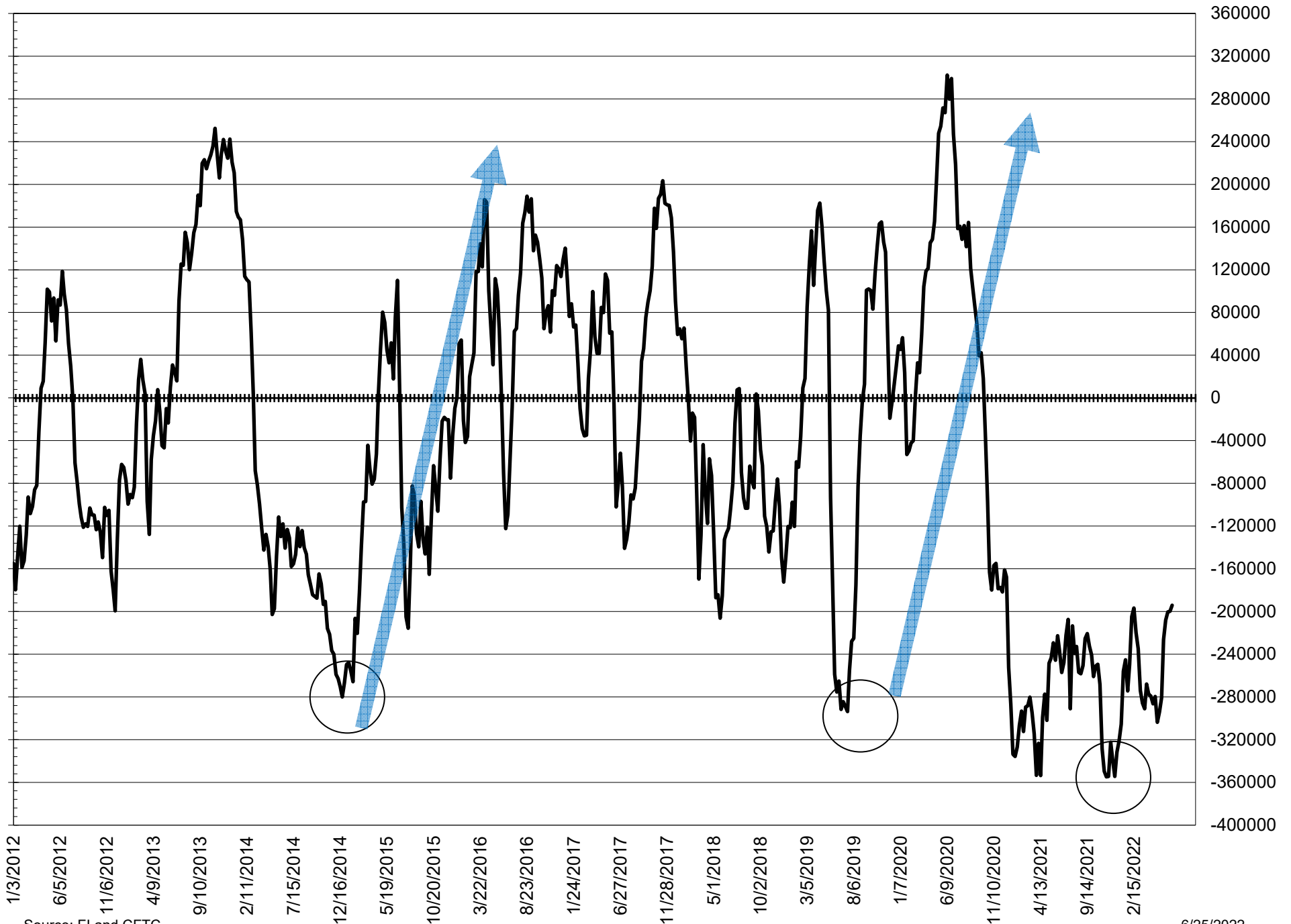
# NET POSITION FUTURES AND OPTIONS OF LARGE SPECULATORS IN SOYBEAN MEAL AND SOYBEAN OIL



# NET POSITION FUTURES AND OPTIONS OF LARGE SPECULATORS IN SOYBEANS AND CORN



# NET POSITION FUTURES AND OPTIONS SPREAD OF LARGE SPECULATORS IN SOYBEANS MINUS CORN



Source: FI and CFTC

6/25/2022

**DISAGGREGATED COMMITMENT OF TRADERS  
FUTURES ONLY NET POSITIONS  
AS OF 06/21/2022  
(IN THOUSAND CONTRACTS)**

	PRODUCER / MERCHANT / PROCESSOR / USER				(INDEX/ETF) SWAP DEALERS				(CTA/CPO/OTHER UNREGISTERED) MANAGED MONEY				
	21-Jun	14-Jun	7-Jun	31-May	21-Jun	14-Jun	7-Jun	31-May	21-Jun	14-Jun	7-Jun	31-May	
WHEAT													
Chicago	(71.4)	(74.8)	(76.0)	(80.3)	56.0	56.7	56.2	61.6	3.2	7.0	13.8	16.7	
Kansas City	(54.0)	(59.6)	(61.6)	(64.6)	28.0	28.5	28.7	27.9	31.1	34.9	36.2	39.7	
Minneapolis	(20.8)	(23.7)	(25.3)	(26.6)	0.3	0.0	(0.1)	0.7	12.4	13.2	13.8	15.4	
All Wheat	(146.2)	(158.0)	(163.0)	(171.5)	84.3	85.2	84.8	90.2	46.8	55.1	63.8	71.7	
CORN	(594.3)	(621.6)	(618.4)	(638.4)	267.8	277.4	281.2	285.1	241.7	253.2	239.6	246.7	
OATS	-	-	-	-	-	-	-	-	-	-	-	-	
SOYBEANS	(264.2)	(267.8)	(262.1)	(275.4)	111.3	112.2	113.7	116.7	149.3	158.4	153.7	160.2	
SOY OIL	(157.4)	(168.8)	(177.8)	(178.8)	79.5	81.7	82.6	86.5	51.1	62.3	67.9	63.4	
SOY MEAL	(205.4)	(201.5)	(203.0)	(199.8)	85.6	86.8	87.7	90.4	59.8	52.5	53.3	47.4	
									Managed % of OI				
									Chicago W	1%	2%	4%	5%
									Corn	16%	17%	15%	16%
	TOTAL				OTHER REPORTABLE				NON REPORTABLE				
	OPEN INTEREST												
	21-Jun	14-Jun	7-Jun	31-May	21-Jun	14-Jun	7-Jun	31-May	21-Jun	14-Jun	7-Jun	31-May	
WHEAT													
Chicago	320,326	336,890	333,705	331,136	15.8	13.5	10.1	5.6	(3.7)	(2.3)	(4.0)	(3.7)	
Kansas City	173,165	177,793	180,335	180,591	(1.6)	(1.6)	(2.2)	(3.4)	(3.5)	(2.3)	(1.1)	0.5	
Minneapolis	68,258	69,679	69,232	73,707	4.5	4.6	4.7	5.3	3.5	5.9	6.9	5.3	
All Wheat	561,749	584,362	583,272	585,434	18.8	16.5	12.6	7.5	(3.7)	1.2	1.8	2.1	
CORN	1,512,152	1,521,565	1,557,167	1,564,217	138.5	146.5	151.7	157.5	(53.7)	(55.6)	(54.1)	(50.9)	
OATS	-	-	-	-	-	-	-	-	-	-	-	-	
SOYBEANS	745,494	754,428	760,444	753,373	29.1	24.3	23.0	25.9	(25.4)	(27.0)	(28.3)	(27.3)	
SOY OIL	387,319	388,690	399,283	383,135	16.4	11.1	10.8	11.6	10.3	13.7	16.6	17.2	
SOY MEAL	403,330	384,925	380,689	370,669	35.6	36.3	36.4	33.4	24.4	25.9	25.6	28.6	

SOURCE: CFTC & FI

**DISAGGREGATED COMMITMENT OF TRADERS  
FUTURES & OPTIONS NET POSITIONS  
AS OF 06/21/2022  
(IN THOUSAND CONTRACTS)**

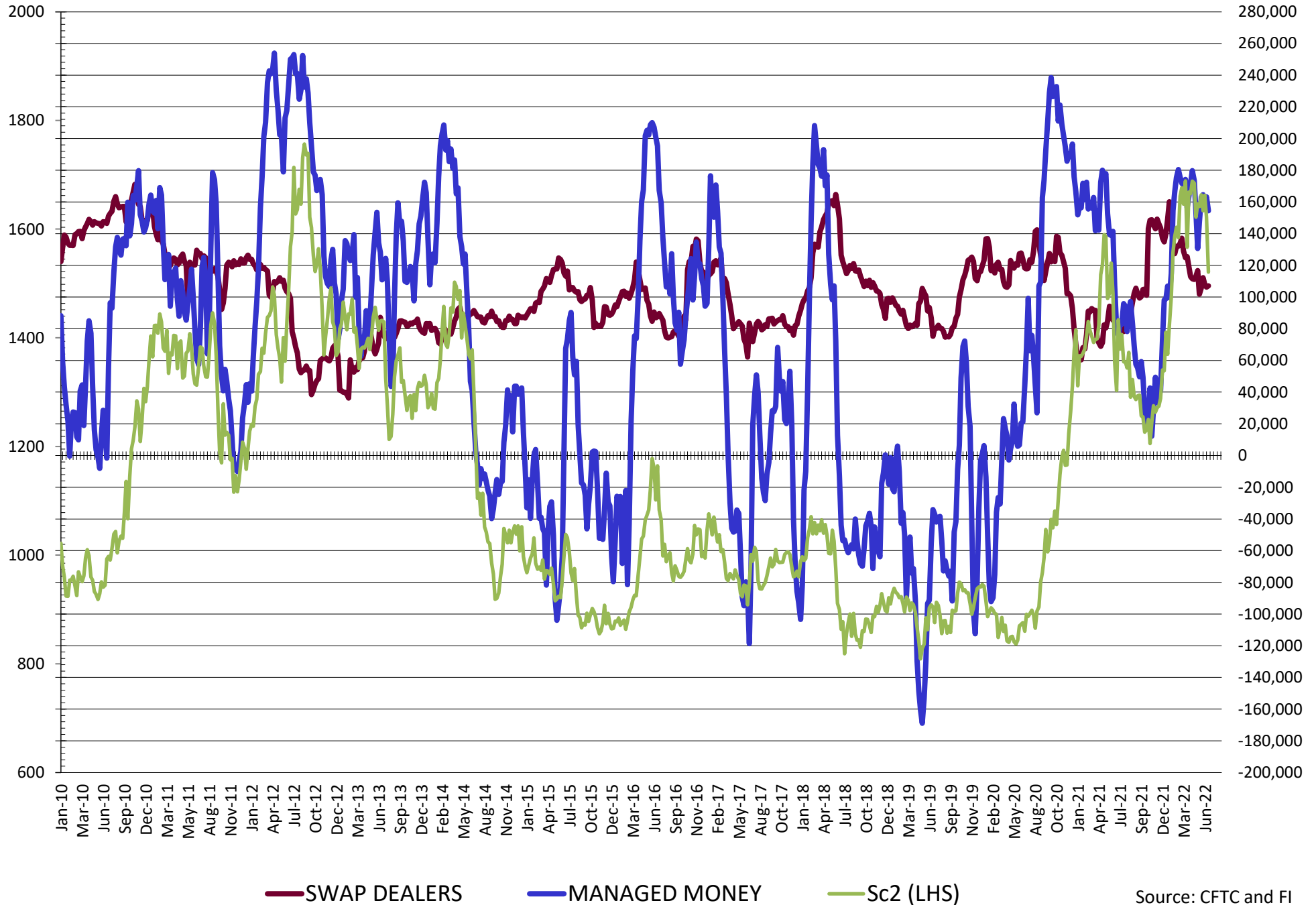
	PRODUCER / MERCHANT / PROCESSOR / USER				(INDEX/ETF) SWAP DEALERS				(CTA/CPO/OTHER UNREGISTERED) MANAGED MONEY			
	21-Jun	14-Jun	7-Jun	31-May	21-Jun	14-Jun	7-Jun	31-May	21-Jun	14-Jun	7-Jun	31-May
	WHEAT											
Chicago	(70.3)	(74.7)	(76.9)	(84.8)	55.9	56.1	54.9	59.6	3.9	6.9	12.7	15.0
Kansas City	(52.5)	(59.0)	(61.5)	(64.8)	28.2	28.4	28.3	27.4	32.6	36.4	37.5	40.7
Minneapolis	(20.0)	(23.4)	(25.2)	(26.5)	0.7	0.3	0.2	0.9	12.4	13.2	13.9	15.5
All Wheat	(142.8)	(157.1)	(163.7)	(176.1)	84.9	84.8	83.3	87.9	49.0	56.5	64.1	71.2
CORN	(565.5)	(594.9)	(594.1)	(613.7)	267.0	275.2	275.4	279.7	265.3	278.2	264.3	269.0
OATS	0.0	0.0	0.0	0.0	0.0	0.0	0.0	0.0	0.0	0.0	0.0	0.0
SOYBEANS	(232.9)	(243.4)	(242.1)	(251.7)	107.0	106.3	108.0	112.2	154.4	163.1	158.9	164.6
SOY OIL	(153.8)	(166.9)	(176.4)	(177.8)	79.5	81.5	82.2	86.2	50.9	63.0	68.8	64.5
SOY MEAL	(195.0)	(190.5)	(192.9)	(190.8)	85.9	87.8	88.3	91.0	60.4	52.5	53.2	47.4

	TOTAL OPEN INTEREST				OTHER REPORTABLE				NON REPORTABLE			
	21-Jun	14-Jun	7-Jun	31-May	21-Jun	14-Jun	7-Jun	31-May	21-Jun	14-Jun	7-Jun	31-May
	WHEAT											
Chicago	453,012	465,751	462,463	454,385	13.9	13.6	13.1	13.7	(3.5)	(1.9)	(3.8)	(3.5)
Kansas City	199,865	202,723	205,338	205,209	(4.0)	(3.4)	(2.8)	(3.5)	(4.3)	(2.4)	(1.4)	0.3
Minneapolis	72,303	73,779	73,168	77,337	3.2	3.9	4.1	4.6	3.7	6.0	7.1	5.5
All Wheat	725,180	742,253	740,969	736,931	13.1	14.0	14.4	14.7	(4.1)	1.8	1.9	2.3
CORN	2,199,804	2,214,773	2,217,675	2,212,940	82.4	87.4	99.5	107.9	(49.2)	(45.8)	(45.8)	(45.8)
OATS	0	0	0	0	0.0	0.0	0.0	0.0	0.0	0.0	0.0	0.0
SOYBEANS	959,863	971,426	979,103	963,118	(1.0)	2.5	4.4	4.1	(27.6)	(28.5)	(29.3)	(29.3)
SOY OIL	451,454	453,471	471,053	446,521	12.8	8.3	8.6	9.5	10.6	14.1	16.7	17.6
SOY MEAL	456,803	435,560	429,842	418,915	21.3	21.0	22.7	20.9	27.4	29.1	28.7	31.6

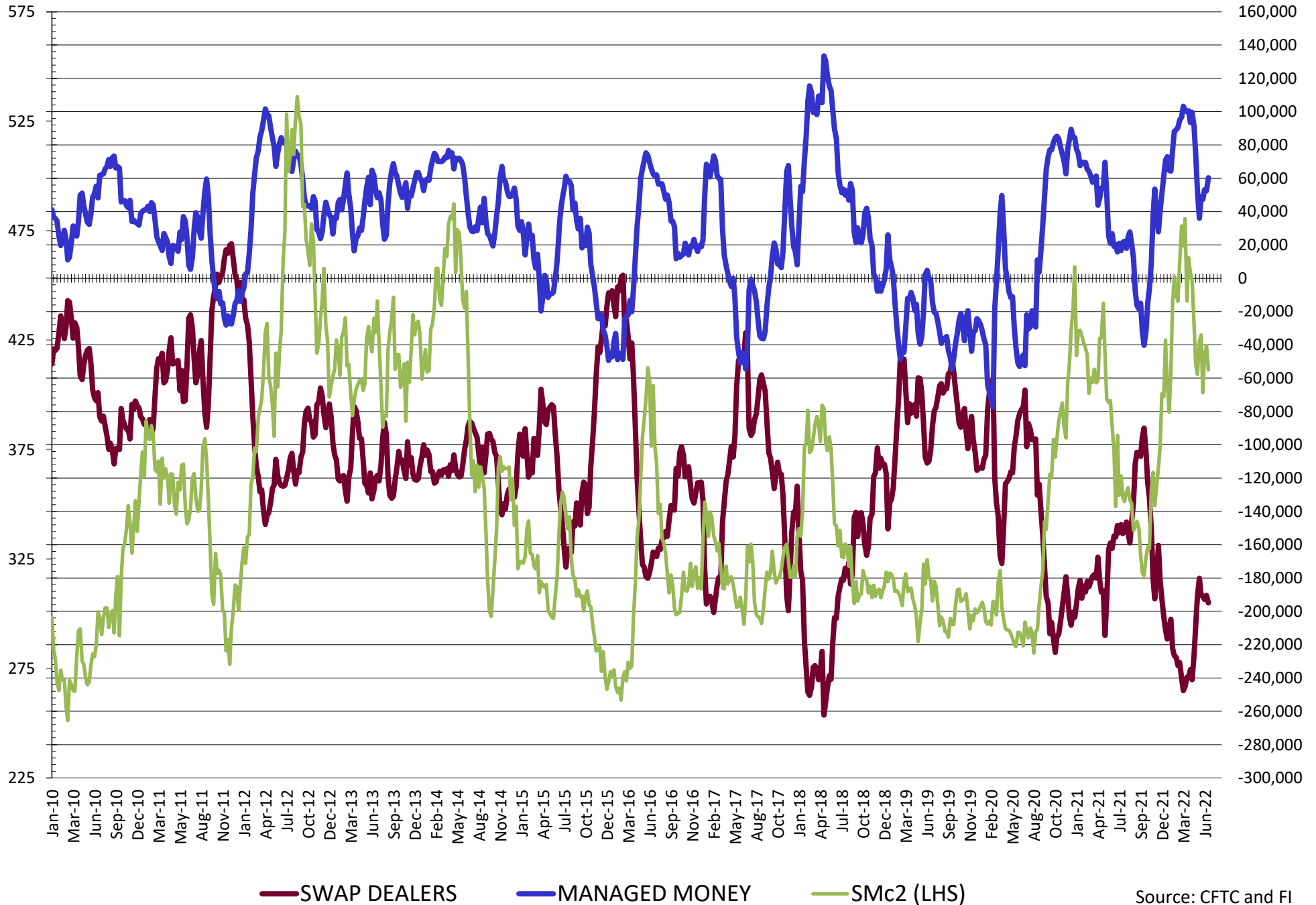
SOURCE: CFTC & FI



# NET POSITION FUTURES AND OPTIONS OF SWAP AND MANAGED FUNDS IN SOYBEANS

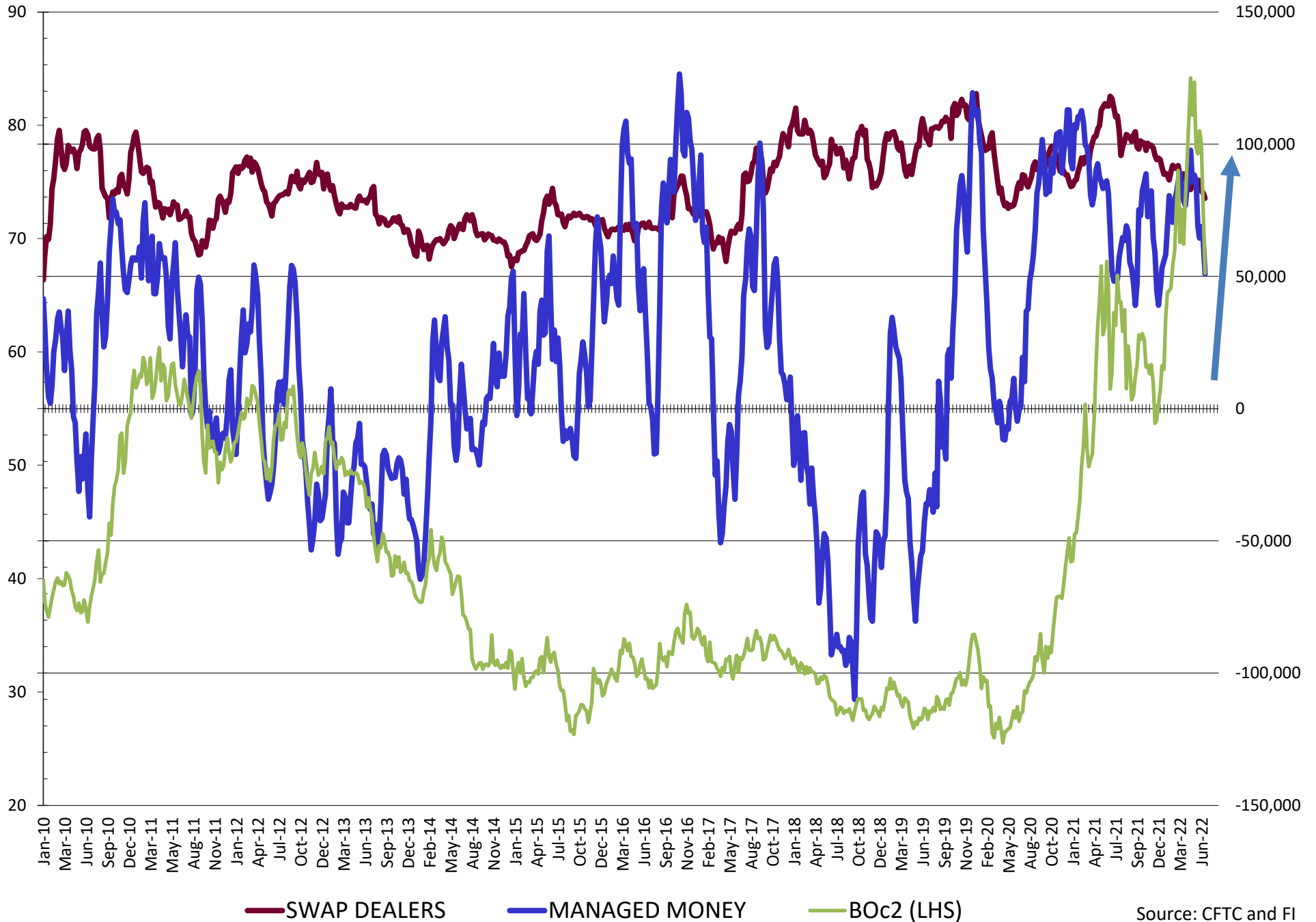


# NET POSITION FUTURES AND OPTIONS OF SWAP AND MANAGED FUNDS IN SOYBEAN MEAL

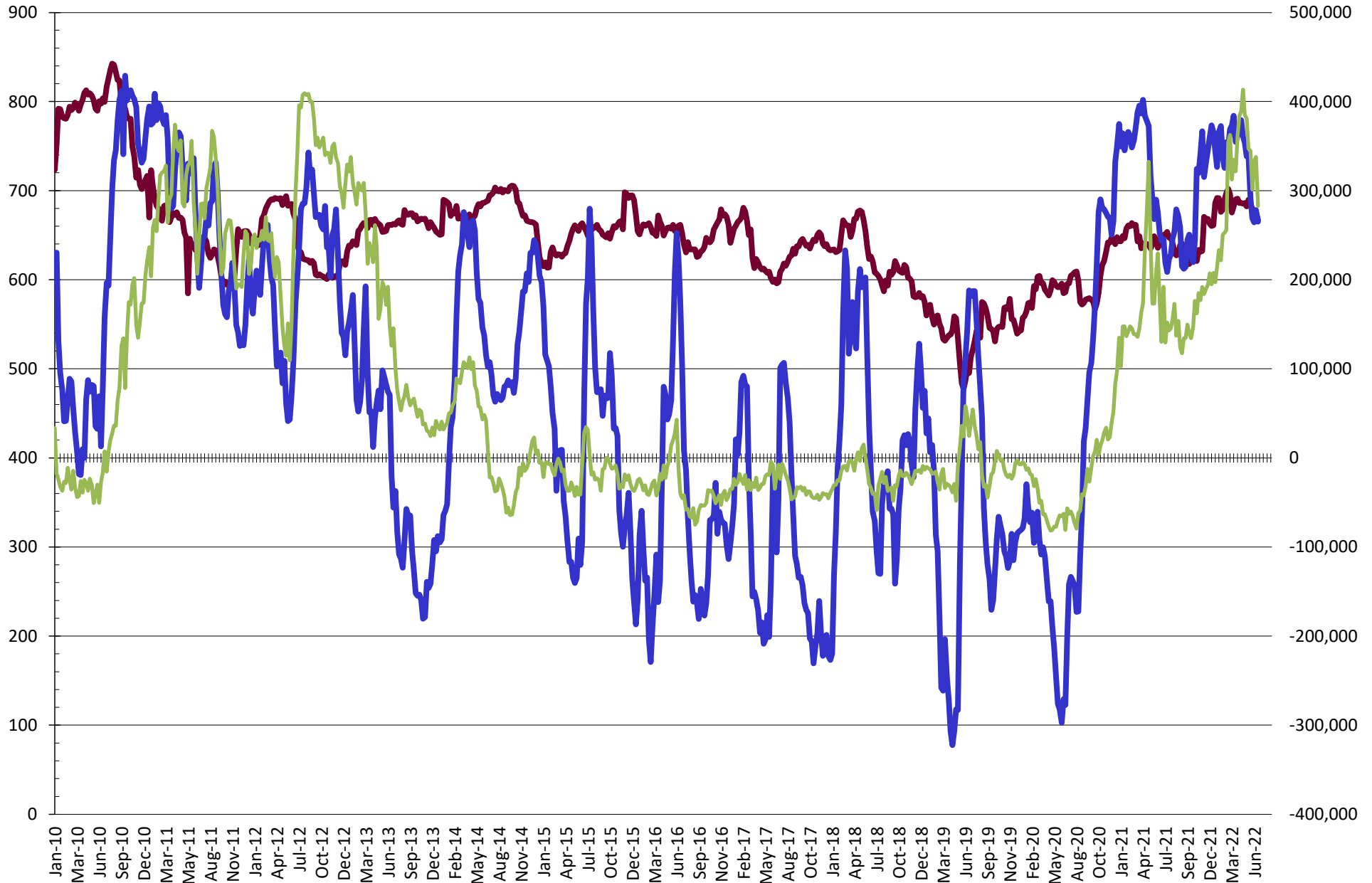


Source: CFTC and FI  
6/25/2022

# NET POSITION FUTURES AND OPTIONS OF SWAP AND MANAGED FUNDS IN SOYBEAN OIL

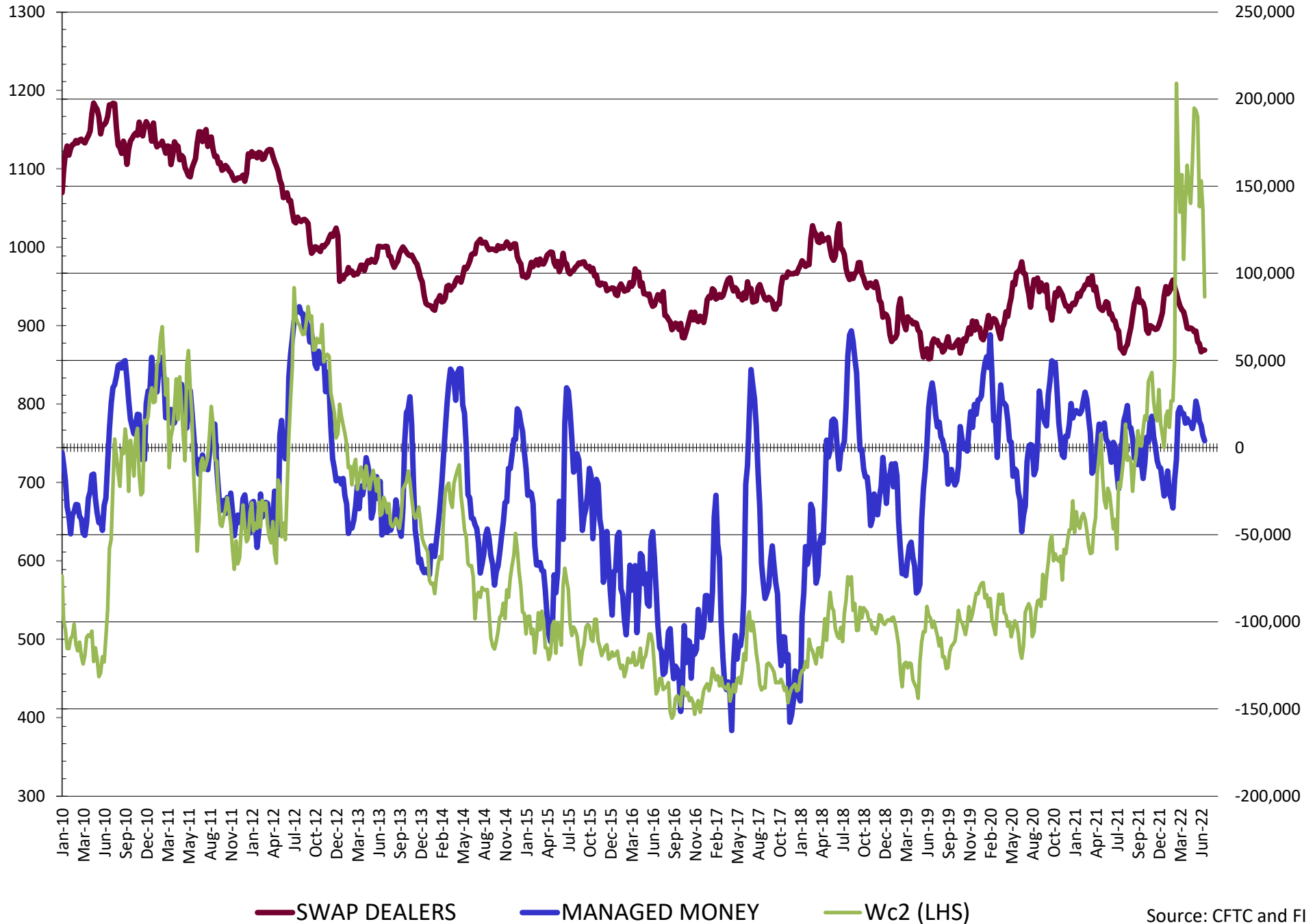


# NET POSITION FUTURES AND OPTIONS OF SWAP AND MANAGED FUNDS IN CORN

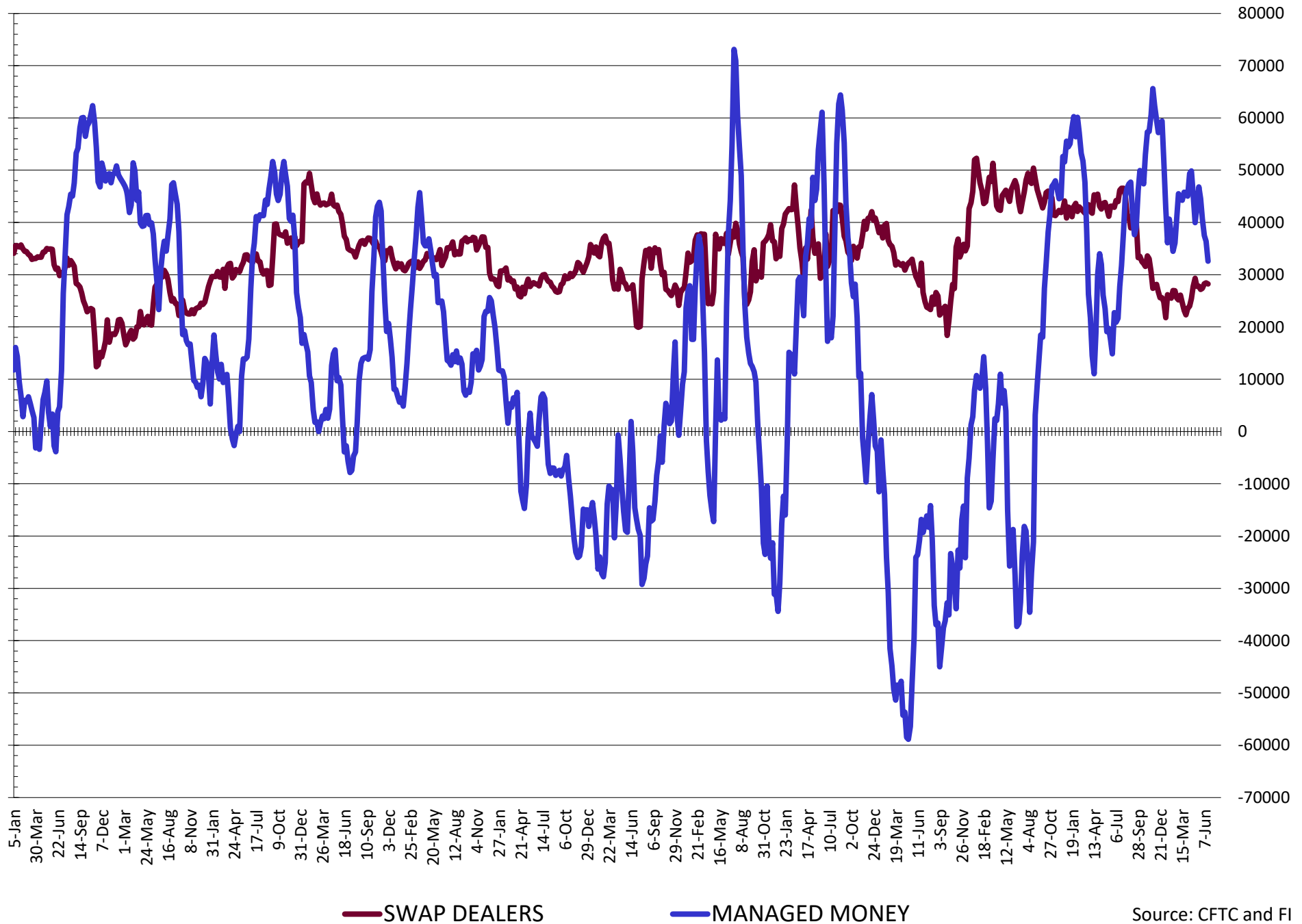


— SWAP DEALERS     
 — MANAGED MONEY     
 — Cc2 (LHS)

# NET POSITION FUTURES AND OPTIONS OF SWAP AND MANAGED FUNDS IN CHICAGO WHEAT

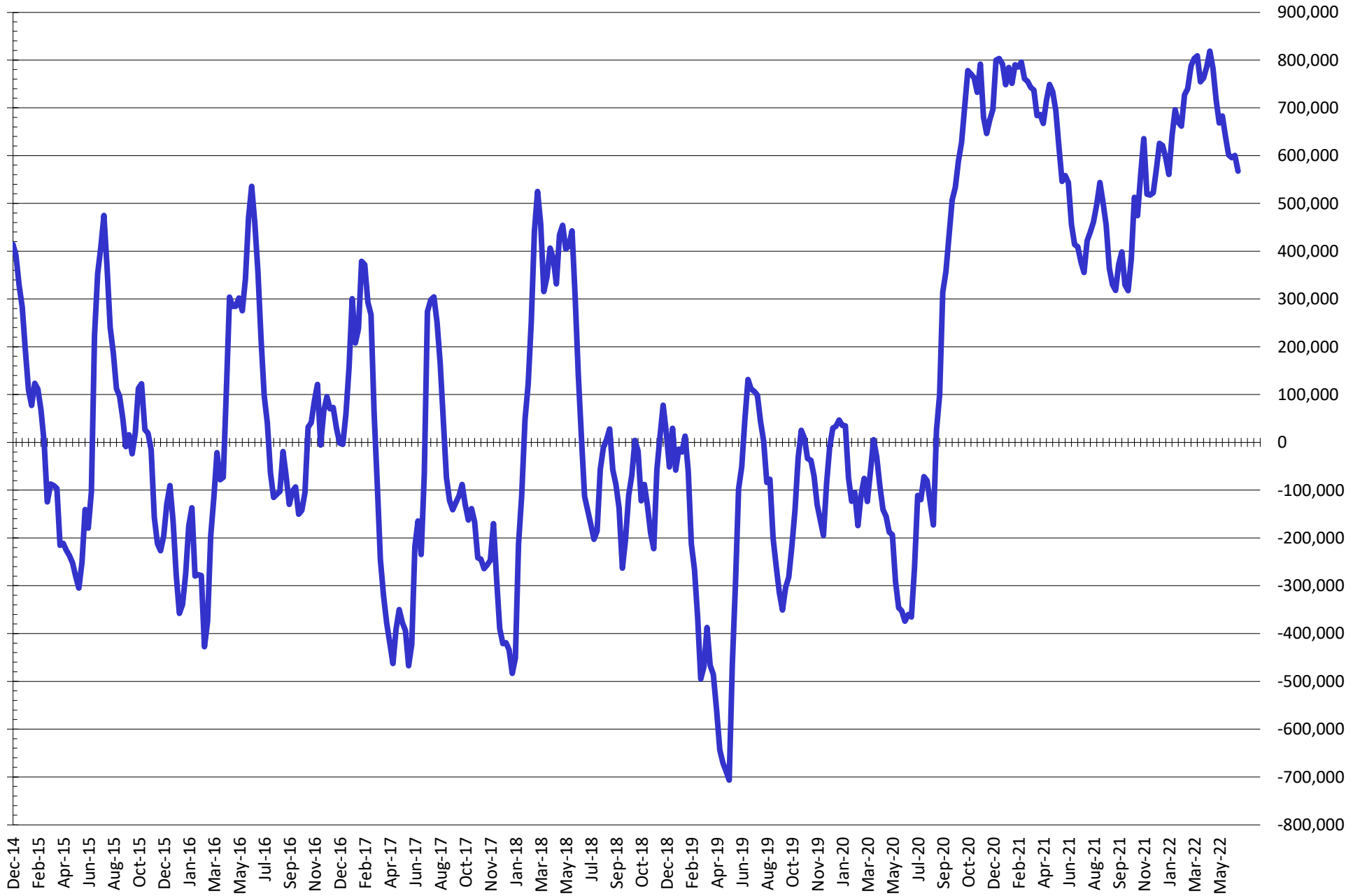


# NET POSITION FUTURES AND OPTIONS OF SWAP DEALERS AND MANAGED FUNDS IN KANSAS WHEAT



Source: CFTC and FI  
6/25/2022

# NET POSITION FUTURES AND OPTIONS OF SWAP AND MANAGED FUNDS IN COMBINED SRW, HRW, CORN, SOYBEANS, SOYMEAL AND SOYOIL



— Net Managed Money

Source: CFTC and FI  
6/25/2022

**COMMITMENT OF TRADERS**  
**FUTURES & OPTIONS NET POSITIONS (INDEX BROKEN OUT)**  
**AS OF 06/21/2022**  
(IN THOUSAND CONTRACTS)

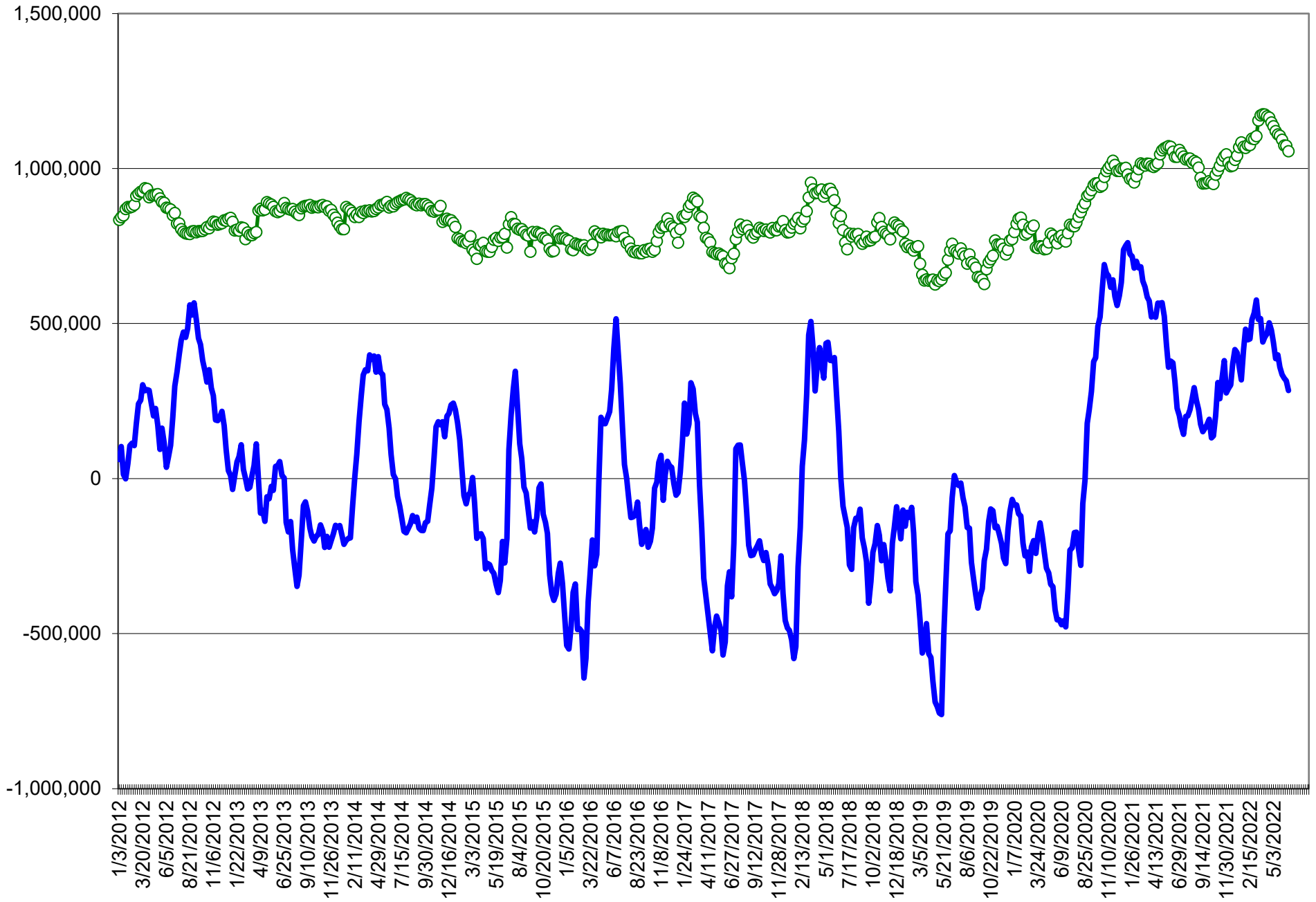
	COMMERCIAL				(FUND) NON COMMERCIAL				(SPEC) NON-REPORTABLE			
	21-Jun	14-Jun	7-Jun	31-May	21-Jun	14-Jun	7-Jun	31-May	21-Jun	14-Jun	7-Jun	31-May
	WHEAT											
Chicago	(96.1)	(102.6)	(104.0)	(112.5)	(42.4)	(41.2)	(40.6)	(34.1)	(3.5)	(1.9)	(3.8)	(3.5)
Kansas City	(58.6)	(66.1)	(69.1)	(72.7)	2.1	5.6	6.8	9.6	(4.3)	(2.4)	(1.4)	0.3
Minneapolis	-	-	-	-	-	-	-	-	-	-	-	-
All Wheat	(154.7)	(168.7)	(173.1)	(185.2)	(40.3)	(35.6)	(33.8)	(24.5)	(7.8)	(4.3)	(5.2)	(3.2)
CORN	(571.4)	(599.9)	(597.2)	(616.8)	178.3	192.1	184.4	192.5	(49.2)	(45.8)	(45.0)	(42.8)
OATS	-	-	-	-	-	-	-	-	-	-	-	-
SOYBEANS	(235.9)	(247.7)	(244.2)	(251.8)	66.3	77.6	83.6	90.3	(27.6)	(28.5)	(29.3)	(29.3)
SOY OIL	(146.9)	(159.0)	(168.0)	(170.4)	37.2	43.8	47.3	44.1	10.6	14.1	16.7	17.6
SOY MEAL	(183.6)	(178.2)	(180.1)	(177.4)	42.2	37.4	41.3	32.5	27.4	29.1	28.7	31.6

	TOTAL OPEN INTEREST				(INDEX) COMMERCIAL INDEX TRADERS				(INDEX) % NET OF TOTAL OPEN INTEREST			
	21-Jun	14-Jun	7-Jun	31-May	21-Jun	14-Jun	7-Jun	31-May	21-Jun	14-Jun	7-Jun	31-May
	WHEAT											
Chicago	453,012	465,751	462,463	454,385	141.9	145.7	148.4	150.0	31.3%	31.3%	32.1%	33.0%
Kansas City	199,865	202,723	205,338	205,209	60.8	62.9	63.8	62.9	30.4%	31.0%	31.1%	30.6%
Minneapolis	-	-	-	-	-	-	-	-	-	-	-	-
All Wheat	652,877	668,474	667,801	659,594	202.7	208.6	212.1	212.9	31.1%	31.2%	31.8%	32.3%
CORN	2,199,804	2,214,773	2,217,675	2,212,940	442.3	453.6	457.8	467.1	20.1%	20.5%	20.6%	21.1%
OATS	-	-	-	-	-	-	-	-	-	-	-	-
SOYBEANS	959,863	971,426	979,103	963,118	197.3	198.6	189.9	190.8	20.6%	20.4%	19.4%	19.8%
SOY OIL	451,454	453,471	471,053	446,521	99.1	101.1	104.0	108.6	22.0%	22.3%	22.1%	24.3%
SOY MEAL	456,803	435,560	429,842	418,915	114.0	111.8	110.0	113.3	25.0%	25.7%	25.6%	27.0%

SOURCE: CFTC & FI



# NET POSITION FUTURES AND OPTIONS OF SPECULATORS AND INDEX FUNDS IN COMBINED SRW, HRW, CORN, SOYBEANS, SOYMEAL AND SOYOIL



Source: CFTC and FI

○ Net Index

— Net Speculator

6/25/2022

## Traditional Daily Estimate of Funds 6/21/22

	(Neg)-"Short"	Pos-"Long"			
Actual less Est.	(28.6)	(7.3)	22.7	(8.4)	18.1
	<b>Corn</b>	<b>Bean</b>	<b>Chi. Wheat</b>	<b>Meal</b>	<b>Oil</b>
Actual	380.2	178.4	19.1	95.4	67.5
22-Jun	3.0	(13.0)	5.0	1.0	(8.0)
23-Jun	(30.0)	(26.0)	(11.0)	(5.0)	(11.0)
24-Jun	10.0	8.0	(5.0)	3.0	5.0
27-Jun					
28-Jun					
<b>FI Est. of Futures Only 6/21/22</b>	<b>363.2</b>	<b>147.4</b>	<b>8.1</b>	<b>94.4</b>	<b>53.5</b>
<b>FI Est. Futures &amp; Options</b>	<b>330.7</b>	<b>122.5</b>	<b>6.9</b>	<b>80.7</b>	<b>49.7</b>
Futures only record long "Traditional Funds"	547.7 1/26/2021	280.9 11/10/2020	86.5 8/7/2018	167.5 5/1/2018	160.2 11/1/2016
Futures only record short	(235.0) 6/9/2020	(118.3) 4/30/2019	(130.0) 4/25/2017	(49.5) 3/1/2016	(69.8) 9/18/2018
Futures and options record net long	557.6 1/12/2021	270.9 10/6/2020	64.8 8/7/2012	132.1 5/1/2018	159.2 1/1/2016
Futures and options record net short	(270.6) 4/26/2019	(132.0) 4/30/2019	(143.3) 4/25/2017	(64.1) 3/1/2016	(77.8) 9/18/2018

## Managed Money Daily Estimate of Funds 6/21/22

	Corn	Bean	Chi. Wheat	Meal	Oil
Latest CFTC Fut. Only	241.7	149.3	3.2	59.8	51.1
Latest CFTC F&O	265.3	154.4	3.9	60.4	50.9
FI Est. Managed Fut. Only	225	118	(8)	59	37
FI Est. Managed Money F&O	248	123	(7)	59	37

## Index Funds Latest Positions (as of last Tuesday)

Index Futures & Options	442.3	197.3	141.9	NA	99.1
Change From Previous Week	(11.3)	(1.3)	(3.8)	NA	(2.0)

Source: Reuters, CFTC & FI (FI est. are noted with latest date)

# Disclaimer

TO CLIENTS/PROSPECTS OF FUTURES INTERNATIONAL, SEE RISK DISCLOSURE BELOW:

THIS COMMUNICATION IS CONVEYED AS A SOLICITATION FOR ENTERING INTO A DERIVATIVES TRANSACTION.

Any trading recommendations and market or other information to Customer by Futures International (FI), although based upon information obtained from sources believed by FI to be reliable may not be accurate and may be changed without notice to customer. FI makes no guarantee as to the accuracy or completeness of any of the information or recommendations furnished to Customer. Customer understands that FI, its managers, employees and/or affiliates may have a position in commodity futures, options or other derivatives which may not be consistent with the recommendations furnished by FI to Customer.

The risk of trading futures and options and other derivatives involves a substantial risk of loss and is not suitable for all persons. In purchasing an option, the risk is limited to the premium paid, and all commissions and fees involved with the trade. When an option is shorted or written, the writer of the option has unlimited risk with respect to the option written. The use of options strategies such as a straddles and strangles involve multiple option positions and may substantially increase the amount of commissions and fees paid to execute the strategy. Option prices do not necessarily move in tandem with cash or futures prices. Each person must consider whether a particular trade, combination of trades or strategy is suitable for that person's financial means and objectives.

This material may include discussions of seasonal patterns, however, futures prices have already factored in the seasonal aspects of supply and demand, and seasonal patterns are no indication of future market trends. Finally, past performance is not indicative of future results.

This communication may contain links to third party websites which are not under the control of FI and FI is not responsible for their content. Products and services are offered only in jurisdictions where solicitation and sale are lawful, and in accordance with applicable laws and regulations in each such jurisdiction.