

CFTC COMMITMENT OF TRADERS REPORT

As of 7/12/2022

TRADITIONAL FUNDS net position changes

Wed to Tue, in 000 contracts

	Corn	Bean	Meal	Oil	Chi. Wheat	KC Wheat	Min Wheat
Futures Only	(13.5)	(10.4)	4.5	(4.9)	(3.7)	(4.5)	(1.9)
Futures & Options Combined	(16.9)	(11.4)	4.0	(6.8)	(8.1)	(5.1)	(2.0)

TRADITIONAL COMMERCIAL net position changes

	Corn	Bean	Meal	Oil	Chi. Wheat	KC Wheat	Min Wheat
Futures Only	10.9	6.4	(7.0)	6.4	4.4	4.4	1.7
Futures & Options Combined	10.0	6.1	(7.0)	8.0	8.5	4.6	1.7

MANAGED MONEY net position changes

	Corn	Bean	Meal	Oil	Chi. Wheat	KC Wheat	Min Wheat
Futures Only	(29.5)	(11.0)	2.4	(6.9)	(8.5)	(5.7)	(2.5)
Futures & Options Combined	(21.7)	(9.3)	2.5	(6.1)	(6.4)	(5.7)	(2.5)

SWAP DEALERS net position changes

	Corn	Bean	Meal	Oil	Chi. Wheat	KC Wheat	Min Wheat
Futures Only	(9.5)	(5.4)	(2.0)	(3.8)	0.1	0.4	0.6
Futures & Options Combined	(7.2)	(5.0)	(1.4)	(3.2)	0.8	0.4	0.6

PRODUCERS/END USERS net position changes

	Corn	Bean	Meal	Oil	Chi. Wheat	KC Wheat	Min Wheat
Futures Only	20.4	11.7	(5.1)	10.2	4.4	4.0	1.1
Futures & Options Combined	17.2	11.1	(5.6)	11.2	7.7	4.2	1.1

INDEX net position changes

	Corn	Bean	Meal	Oil	Chi. Wheat	KC Wheat	Min Wheat
Futures & Options Combined	(14.0)	(13.9)	(3.7)	(4.6)	(7.9)	(3.1)	NA

SUPPLEMENTAL NON-COMMERCIAL net position changes

	Corn	Bean	Meal	Oil	Chi. Wheat	KC Wheat	Min Wheat
Futures & Options Combined	(6.6)	(2.9)	6.5	(5.9)	(0.7)	(2.5)	NA

OPEN INTEREST net position changes

Wed to Tue, in 000 contracts

	Corn	Bean	Meal	Oil	Chi. Wheat	KC Wheat	Min Wheat
Futures Only	2.2	(26.9)	1.8	5.0	(0.6)	0.1	(2.7)
Futures & Options Combined	52.3	(15.4)	5.1	13.4	11.1	1.8	(2.5)

Source: CFTC and FI

Wed to Tue, in 000 contracts

7/16/2022

**COMMITMENT OF TRADERS
FUTURES ONLY NET POSITIONS
AS OF 07/12/2022
(IN THOUSAND CONTRACTS)**

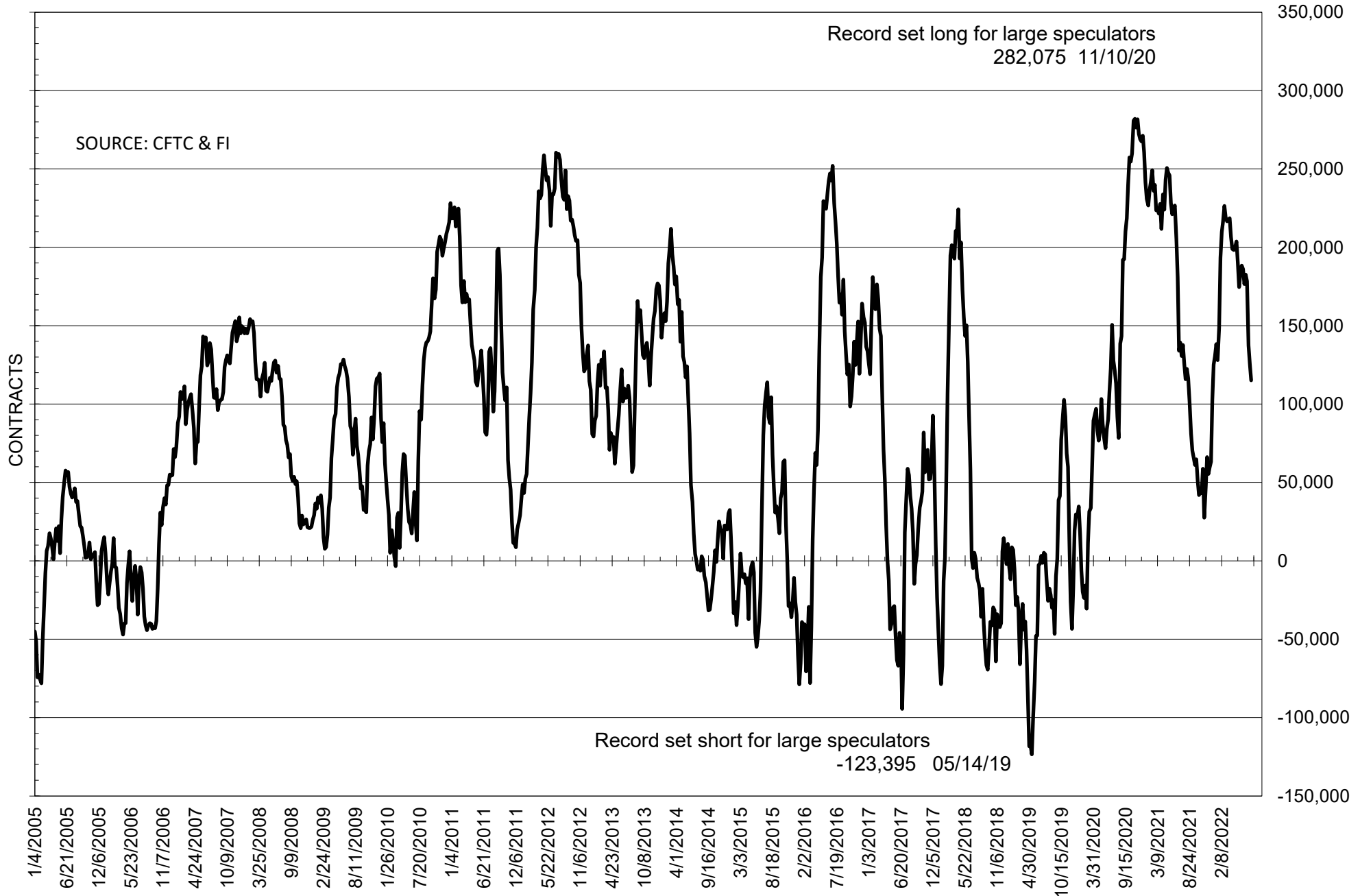
	COMMERCIAL				(FUND) NON COMMERCIAL				(SPEC) NON-REPORTABLE			
	12-Jul	5-Jul	28-Jun	21-Jun	12-Jul	5-Jul	28-Jun	21-Jun	12-Jul	5-Jul	28-Jun	21-Jun
	WHEAT											
Chicago	5.0	0.6	-1.9	-15.4	4.6	8.4	7.7	19.1	-9.7	-9.0	-5.8	-3.7
Kansas City	-10.5	-14.9	-18.3	-26.0	13.4	17.9	21.2	29.5	-2.9	-3.0	-2.8	-3.5
Minneapolis	-4.9	-6.5	-12.4	-20.4	6.0	7.9	11.7	16.9	-1.1	-1.4	0.7	3.5
All Wheat	-10.3	-20.8	-32.6	-61.9	24.1	34.2	40.5	65.5	-13.7	-13.4	-7.9	-3.7
CORN	-196.5	-207.4	-274.1	-326.5	247.2	260.7	328.1	380.2	-50.6	-53.3	-54.0	-53.7
OATS	#VALUE!	#VALUE!	-0.3	#VALUE!	#VALUE!	#####	0.2	#VALUE!	#VALUE!	#VALUE!	0.0	#VALUE!
SOYBEANS	-87.3	-93.6	-106.7	-153.0	115.1	125.5	137.2	178.4	-27.8	-31.9	-30.5	-25.4
SOY OIL	-32.2	-38.6	-53.2	-77.9	29.8	34.7	44.9	67.5	2.4	3.9	8.3	10.3
SOY MEAL	-119.8	-112.8	-114.9	-119.8	100.4	95.9	93.9	95.4	19.4	16.8	20.9	24.4

Oats positions thin to be reported

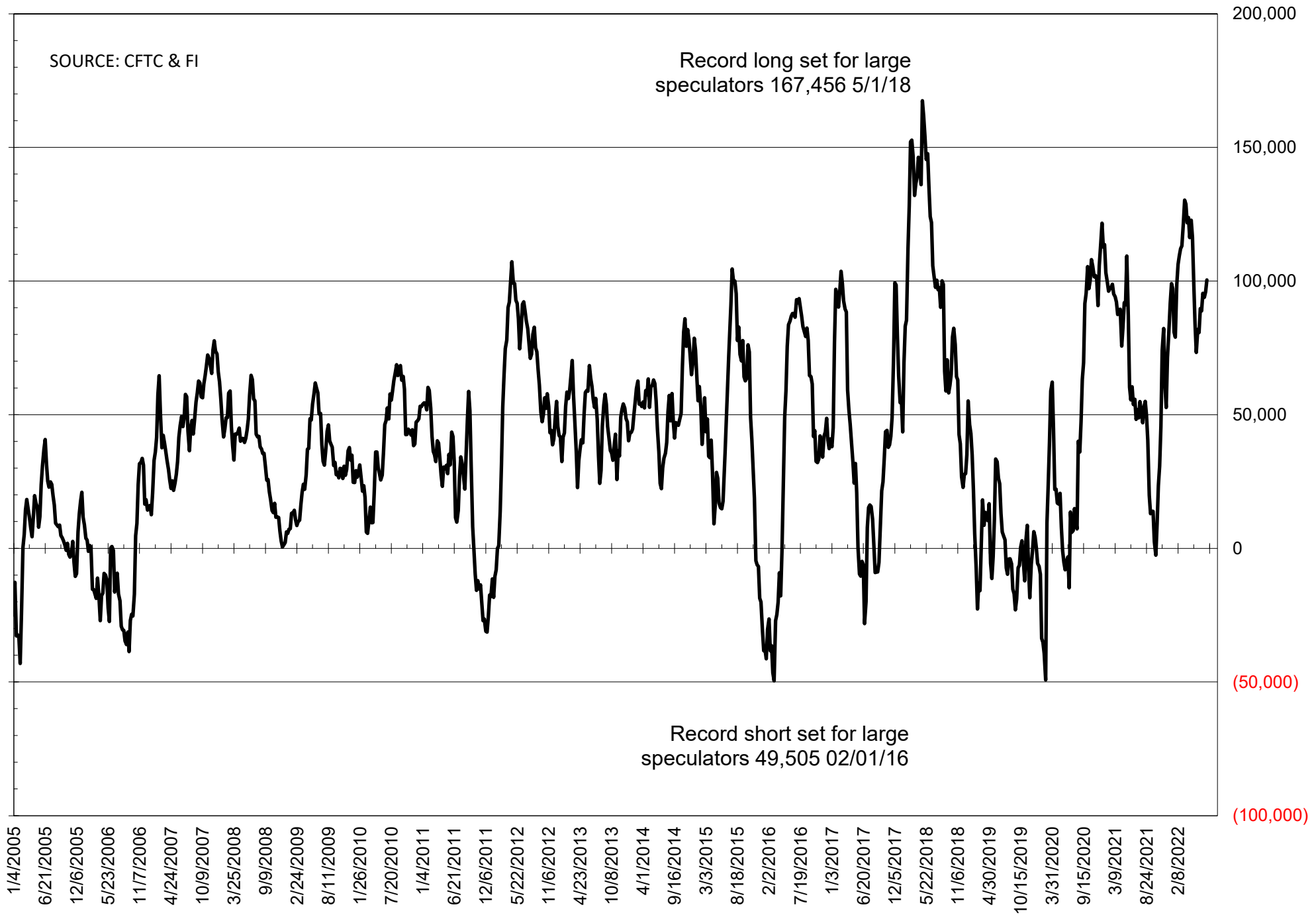
	TOTAL OPEN INTEREST				NEARBY FUTURES PRICE					12-Jul-22 LAST REPORTED % HELD BY TRADERS			
	12-Jul	5-Jul	28-Jun	21-Jun	Q/U Latest	Q/U 12-Jul	Q/U 5-Jul	N 28-Jun	N 21-Jun	LARGE FUND		SMALL	
										LONG	SHORT	LONG	SHORT
WHEAT													
Chicago	288182	288754	291041	320326	776.75	814.25	807.00	921.25	923.75	0%	28%	0%	13%
Kansas City	153758	153674	155953	173165	837.50	867.75	862.00	983.75	992.50	0%	16%	0%	13%
Minneapolis	60135	62879	64642	68258	906.75	918.75	890.00	1033.25	1070.75	0%	8%	0%	17%
CORN	1333199	1331035	1338054	1512152	604.25	594.00	592.25	759.50	750.25	0%	10%	0%	13%
OATS	#VALUE!	#VALUE!	2675	#VALUE!	464.75	463.25	463.50	629.75	597.00	0%	#VALUE!	0%	#VALUE!
SOYBEANS	611751	638675	653337	745494	1466.00	1468.25	1439.25	1663.75	1610.75	28%	9%	6%	11%
SOY OIL	369766	364800	363276	387319	60.08	60.11	59.62	72.09	69.75	0%	11%	0%	6%
SOY MEAL	396719	394947	391532	403330	431.00	424.80	410.40	455.10	432.60	0%	3%	0%	6%

SOURCE: CFTC & FI

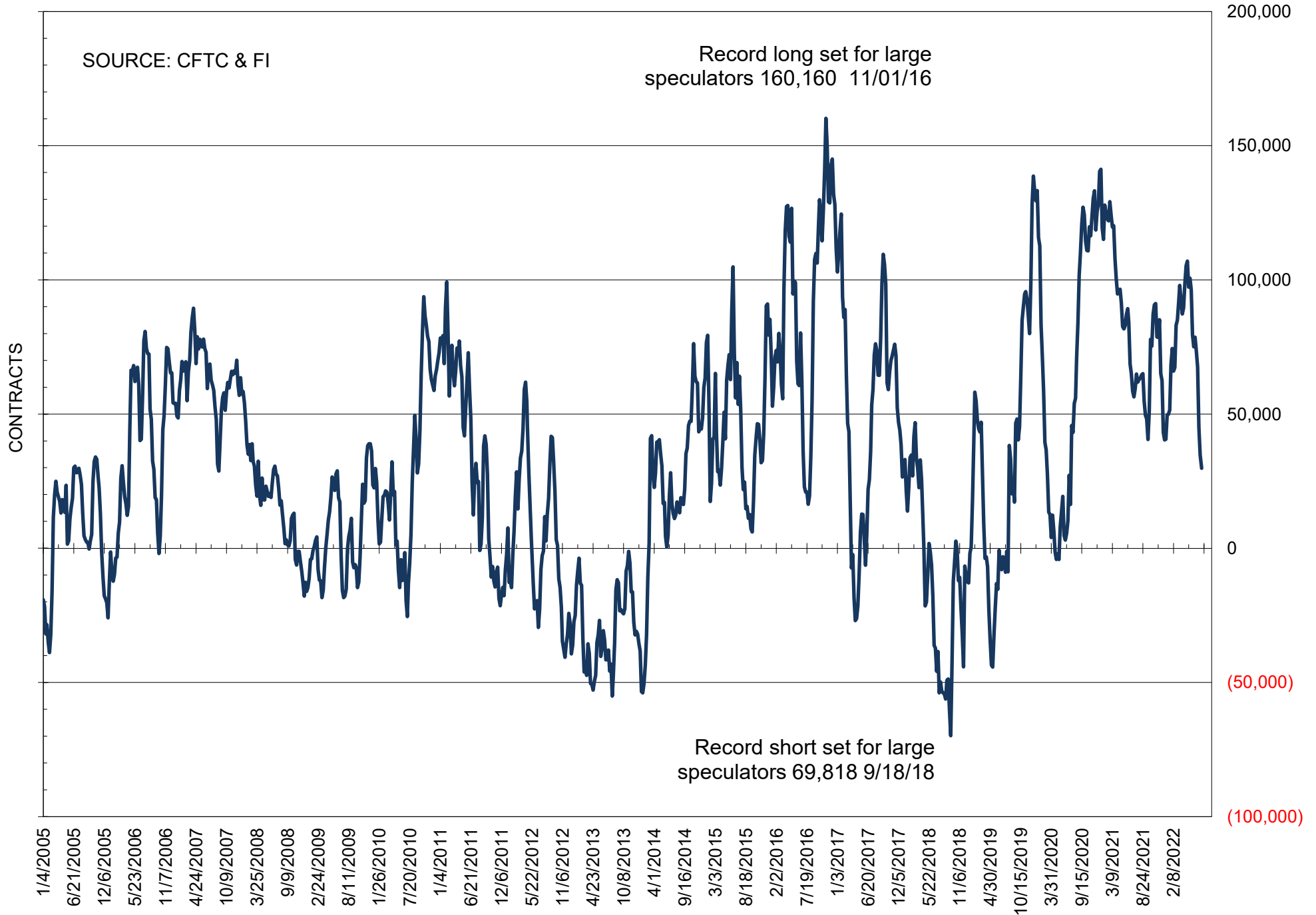
NET POSITION OF FUTURES ONLY LARGE SPECS IN SOYBEANS



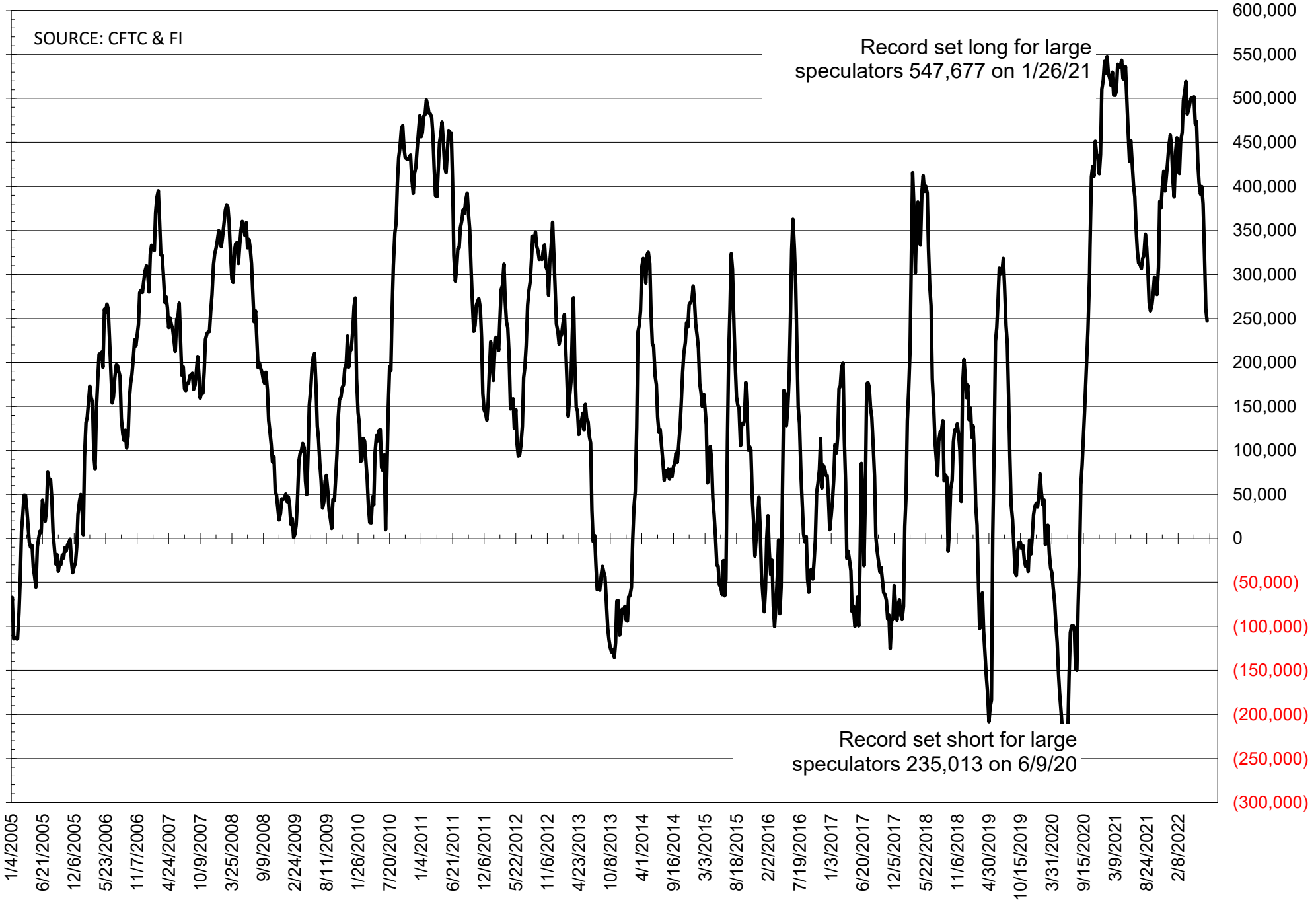
NET POSITION OF FUTURES ONLY LARGE SPECS IN SOYMEAL



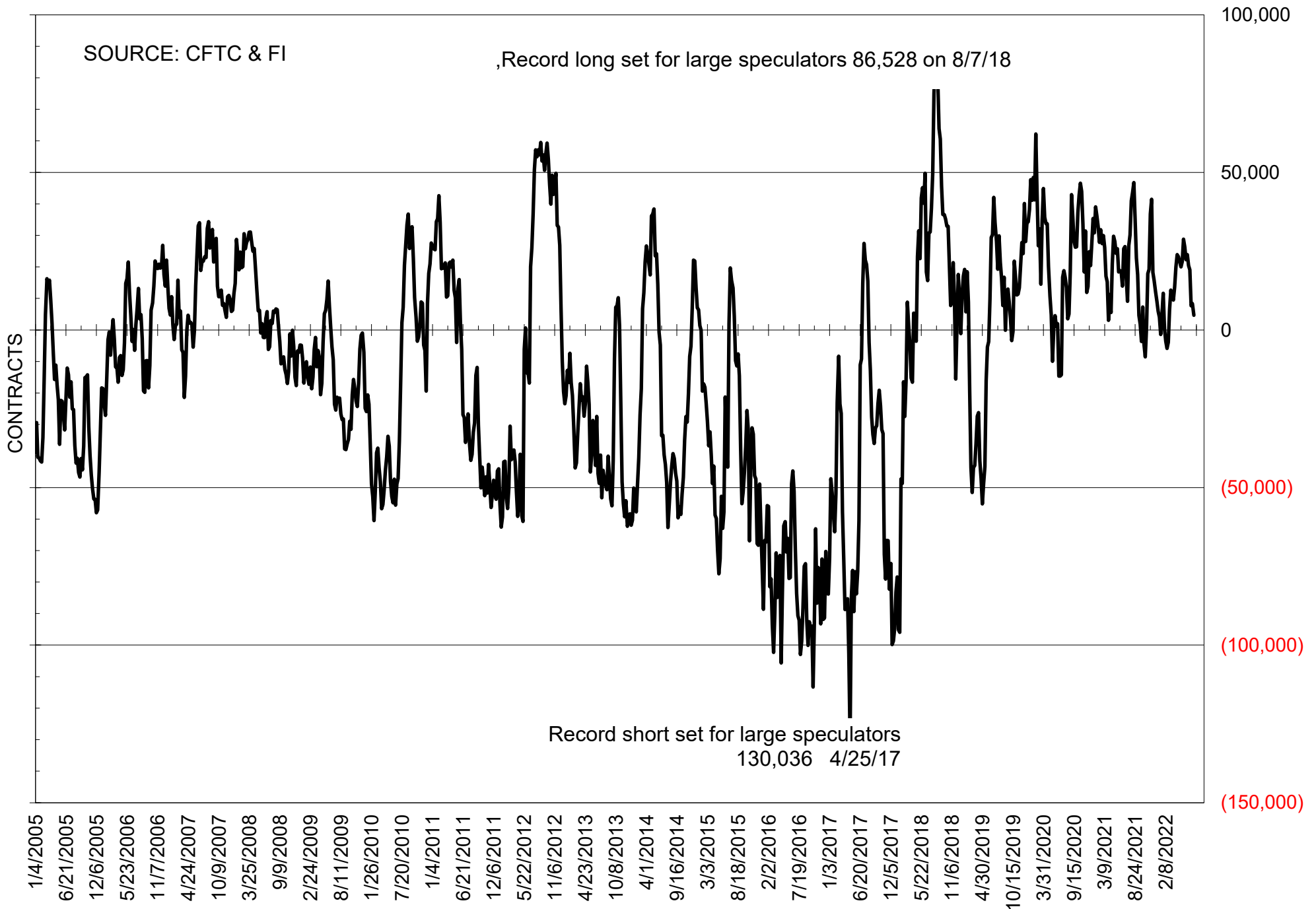
NET POSITION OF FUTURES ONLY LARGE SPECS IN SOYOIL



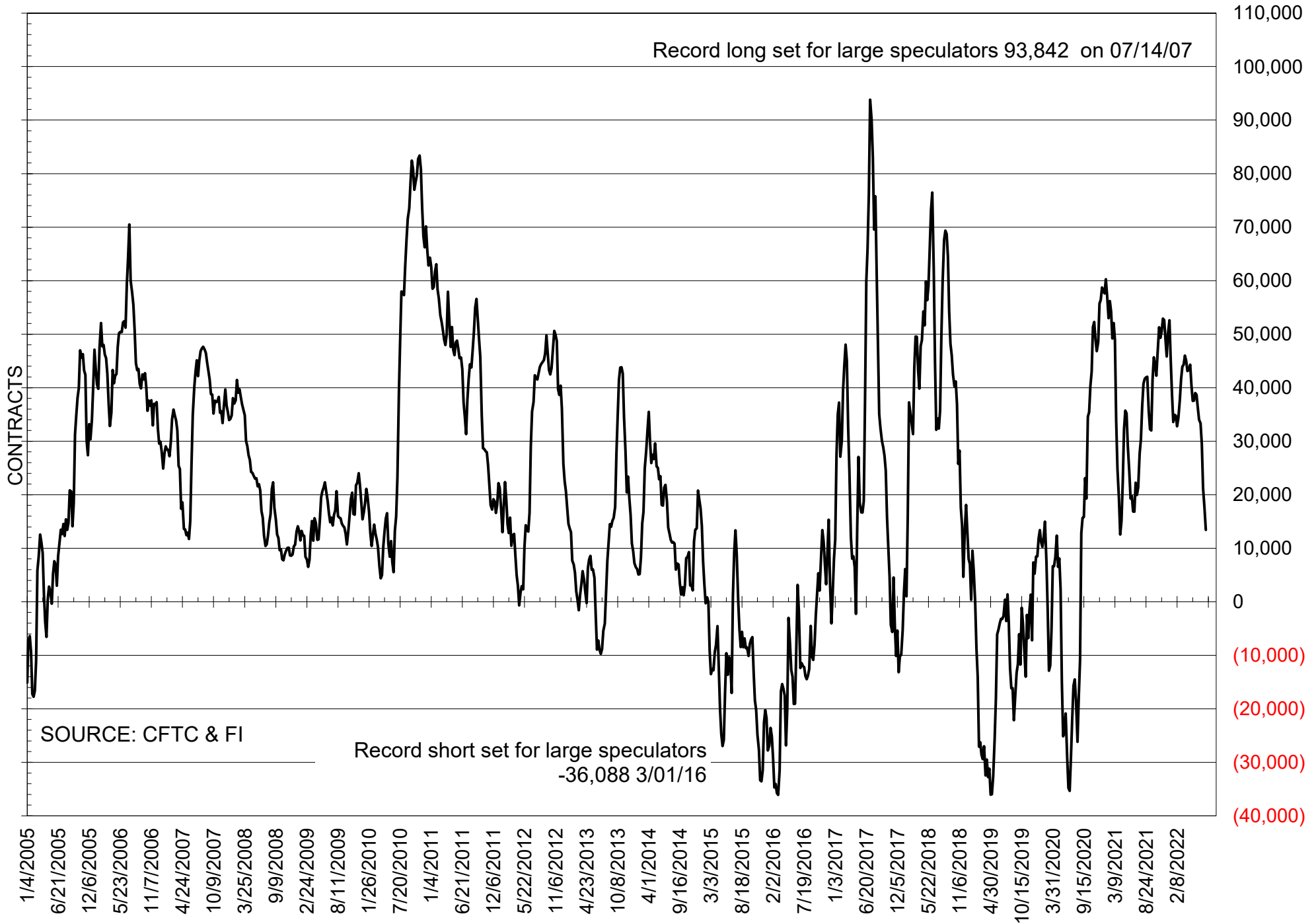
NET POSITION OF LARGE SPECULATORS IN CORN



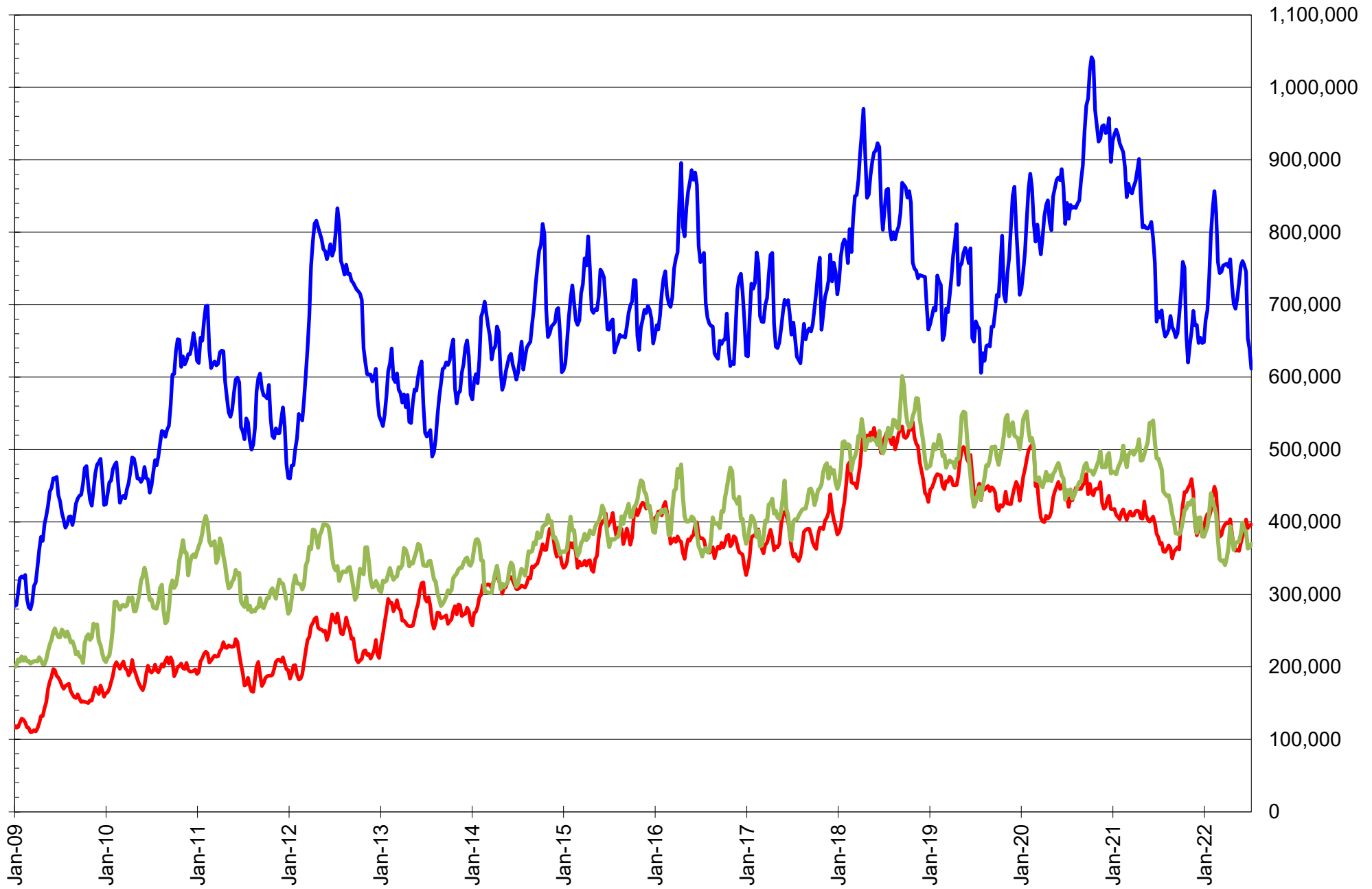
NET POSITION OF FUTURES ONLY LARGE SPECS IN CHICAGO WHEAT



NET POSITION OF LARGE SPECULATORS IN KANSAS CITY WHEAT



TOTAL OPEN INTEREST IN SOYBEANS, MEAL AND OIL, FUTURES ONLY



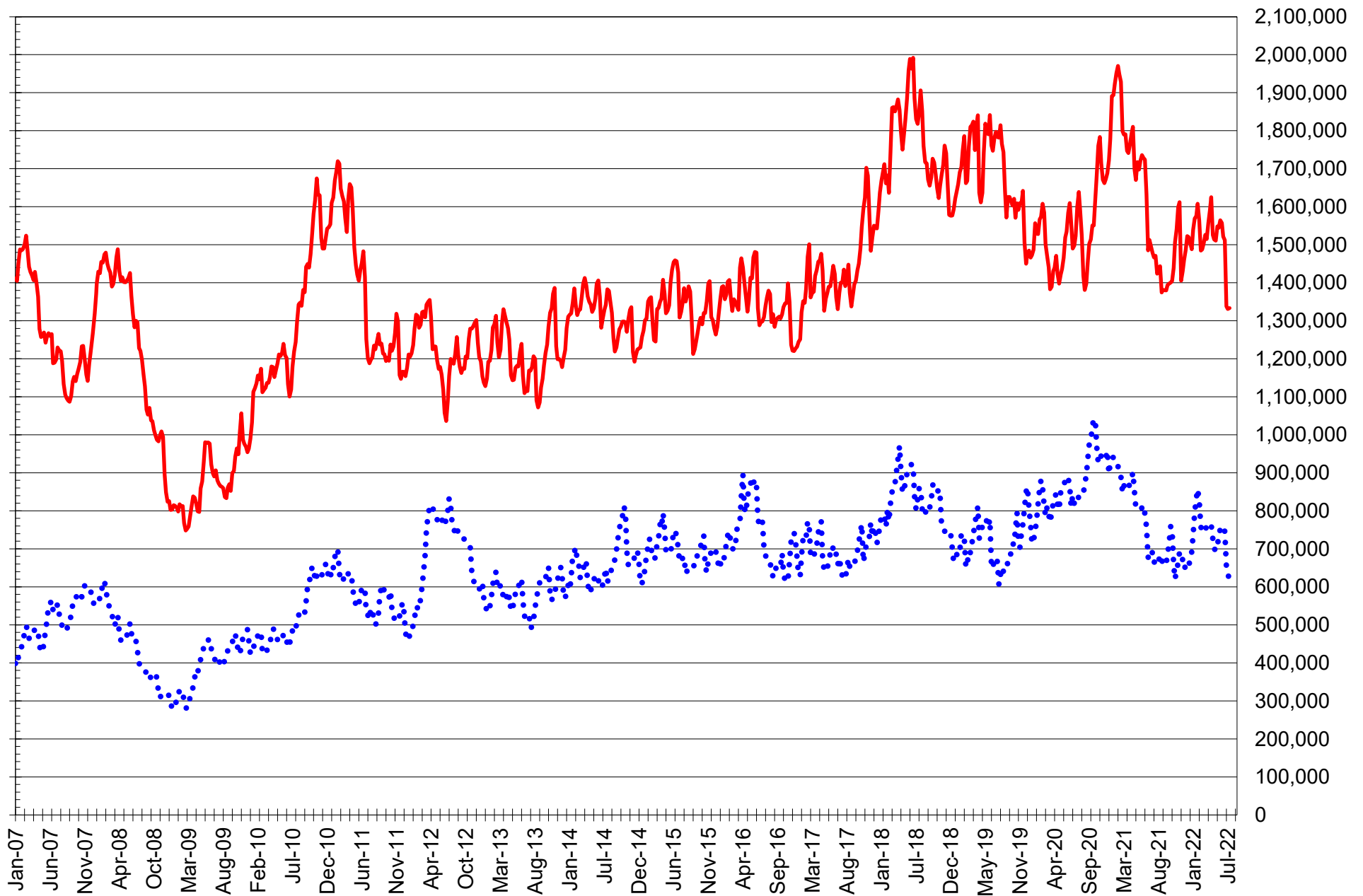
SOURCE: CFTC & FI

— SOYBEANS

— SOYBEAN MEAL

— SOYBEAN OIL

TOTAL OPEN INTEREST IN CORN AND SOYBEANS, FUTURES ONLY



SOURCE: CFTC & FI

— CORN

..... SOYBEANS

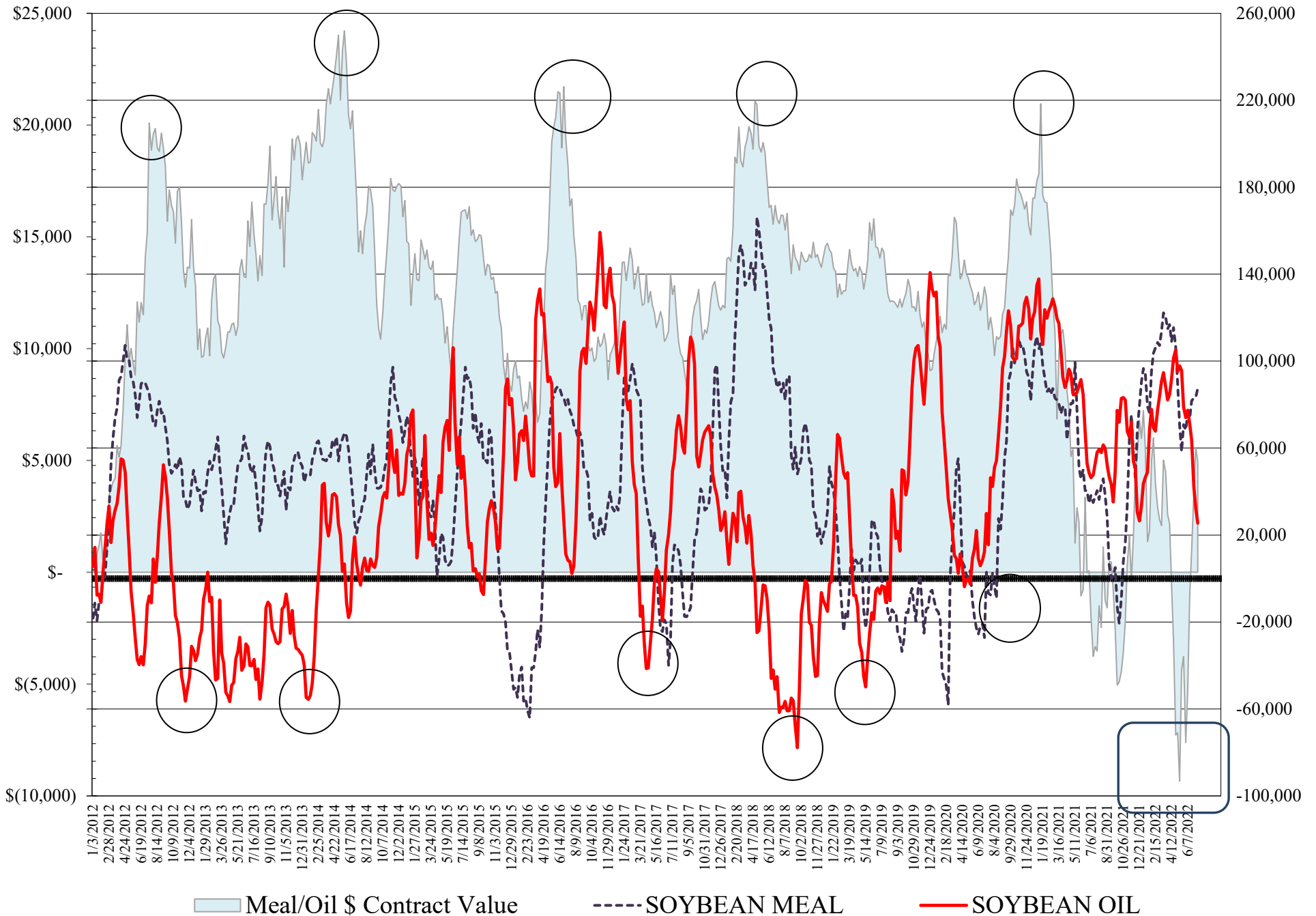
**COMMITMENT OF TRADERS
FUTURES & OPTIONS NET POSITIONS
AS OF 07/12/2022
(IN THOUSAND CONTRACTS)**

	COMMERCIAL				(FUND) NON COMMERCIAL				(SPEC) NON-REPORTABLE			
	12-Jul	5-Jul	28-Jun	21-Jun	12-Jul	5-Jul	28-Jun	21-Jun	12-Jul	5-Jul	28-Jun	21-Jun
WHEAT												
Chicago	11.2	2.8	-3.7	-14.3	-2.4	5.7	9.3	17.9	-8.9	-8.5	-5.5	-3.5
Kansas City	-9.2	-13.8	-17.6	-24.3	11.9	17.0	20.3	28.6	-2.7	-3.2	-2.8	-4.3
Minneapolis	-4.1	-5.8	-11.8	-19.3	5.3	7.3	11.1	15.6	-1.2	-1.5	0.7	3.7
All Wheat	-2.0	-16.8	-33.1	-57.9	14.9	30.0	40.7	62.0	-12.8	-13.2	-7.6	-4.1
CORN	-148.7	-158.7	-243.3	-298.5	200.0	216.9	296.5	347.7	-51.3	-58.2	-53.2	-49.2
OATS	#VALUE!	#VALUE!	-0.2	#VALUE!	#VALUE!	#VALUE!	0.2	#VALUE!	#VALUE!	#VALUE!	0.1	#VALUE!
SOYBEANS	-57.1	-63.3	-87.0	-125.8	90.0	101.4	121.2	153.4	-32.9	-38.1	-34.2	-27.6
SOY OIL	-28.6	-36.6	-50.5	-74.3	25.5	32.3	42.2	63.7	3.2	4.4	8.3	10.6
SOY MEAL	-109.2	-102.1	-106.4	-109.1	87.5	83.5	83.0	81.7	21.7	18.7	23.4	27.4

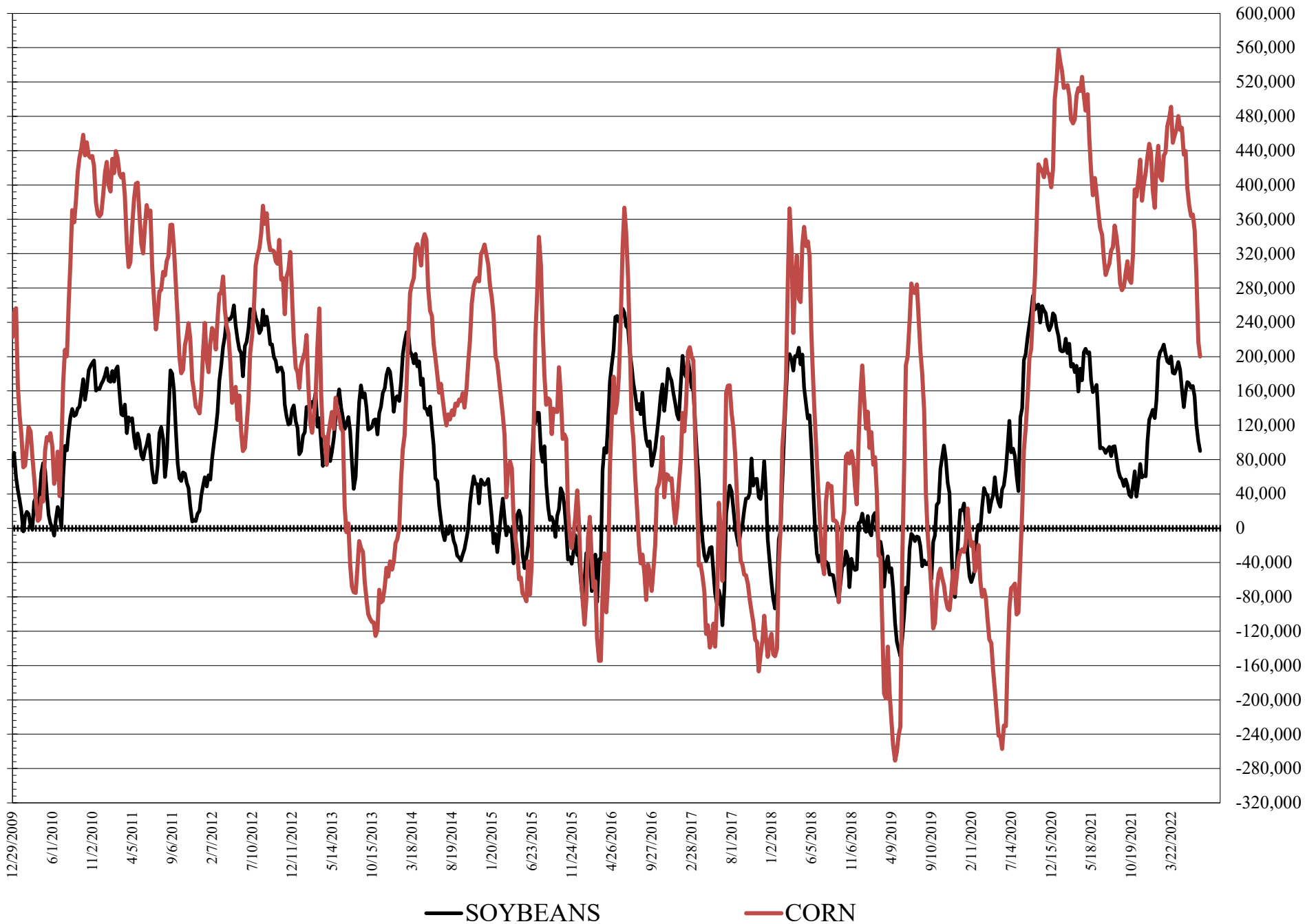
	TOTAL OPEN INTEREST				COMMERCIALS		% HELD BY TRADERS LARGE (FUNDS)		SMALL (NON-REP)	
	12-Jul	5-Jul	28-Jun	21-Jun	LONG	SHORT	LONG	SHORT	LONG	SHORT
WHEAT										
Chicago	398,172	387,076	375,548	453,012			19%	20%	8%	10%
Kansas City	172,630	170,838	171,480	199,865			21%	14%	11%	12%
Minneapolis	63,187	65,698	67,349	72,303			16%	7%	15%	17%
CORN	1,906,814	1,854,508	1,855,971	2,199,804			16%	6%	9%	12%
OATS	#VALUE!	#VALUE!	2,777	#VALUE!						
SOYBEANS	790,441	805,841	800,466	959,863			18%	7%	6%	10%
SOY OIL	427,432	414,025	404,637	451,454			15%	9%	6%	6%
SOY MEAL	440,090	435,036	430,815	456,803			22%	3%	10%	6%

SOURCE: CFTC & FI

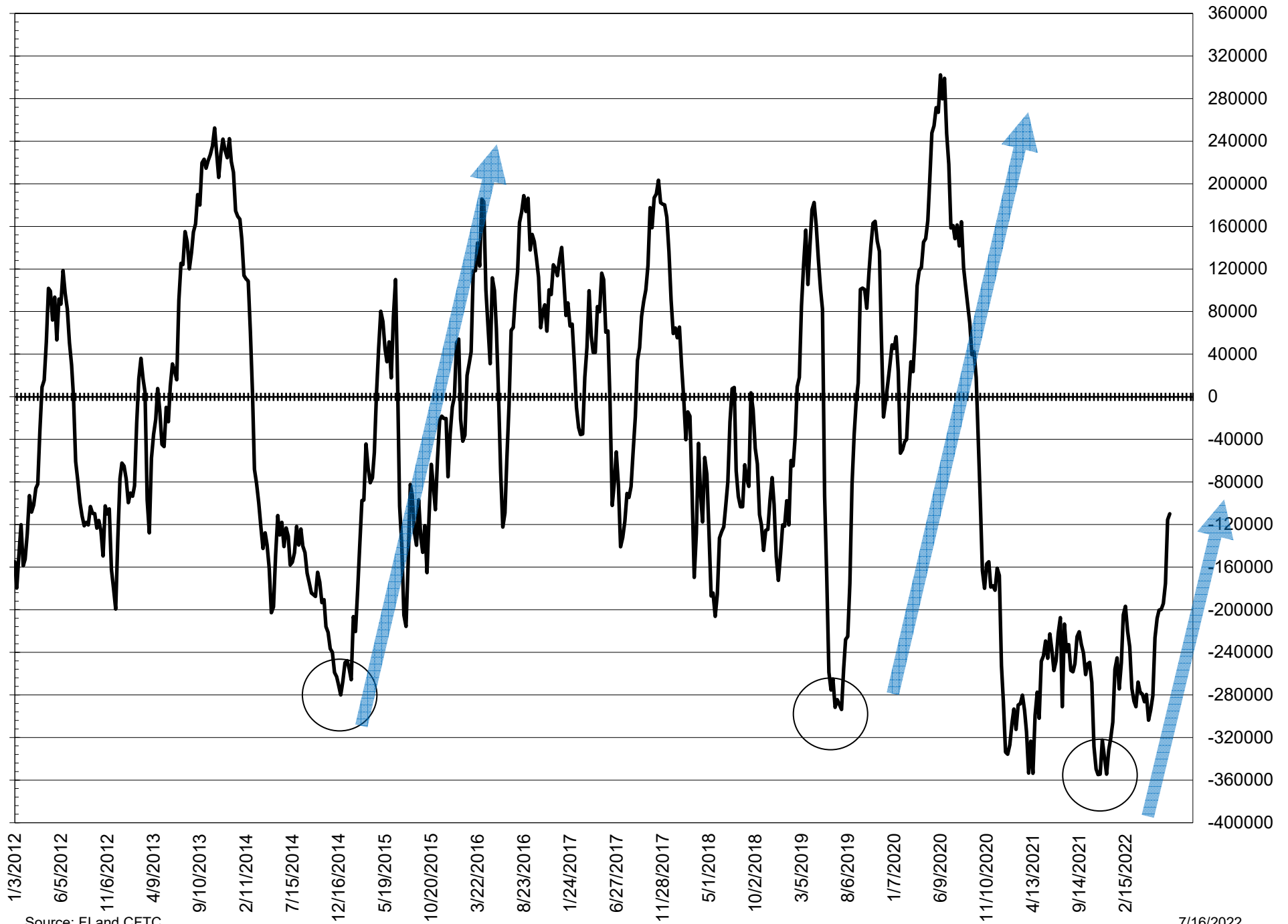
NET POSITION FUTURES AND OPTIONS OF LARGE SPECULATORS IN SOYBEAN MEAL AND SOYBEAN OIL



NET POSITION FUTURES AND OPTIONS OF LARGE SPECULATORS IN SOYBEANS AND CORN



NET POSITION FUTURES AND OPTIONS SPREAD OF LARGE SPECULATORS IN SOYBEANS MINUS CORN



Source: FI and CFTC

7/16/2022

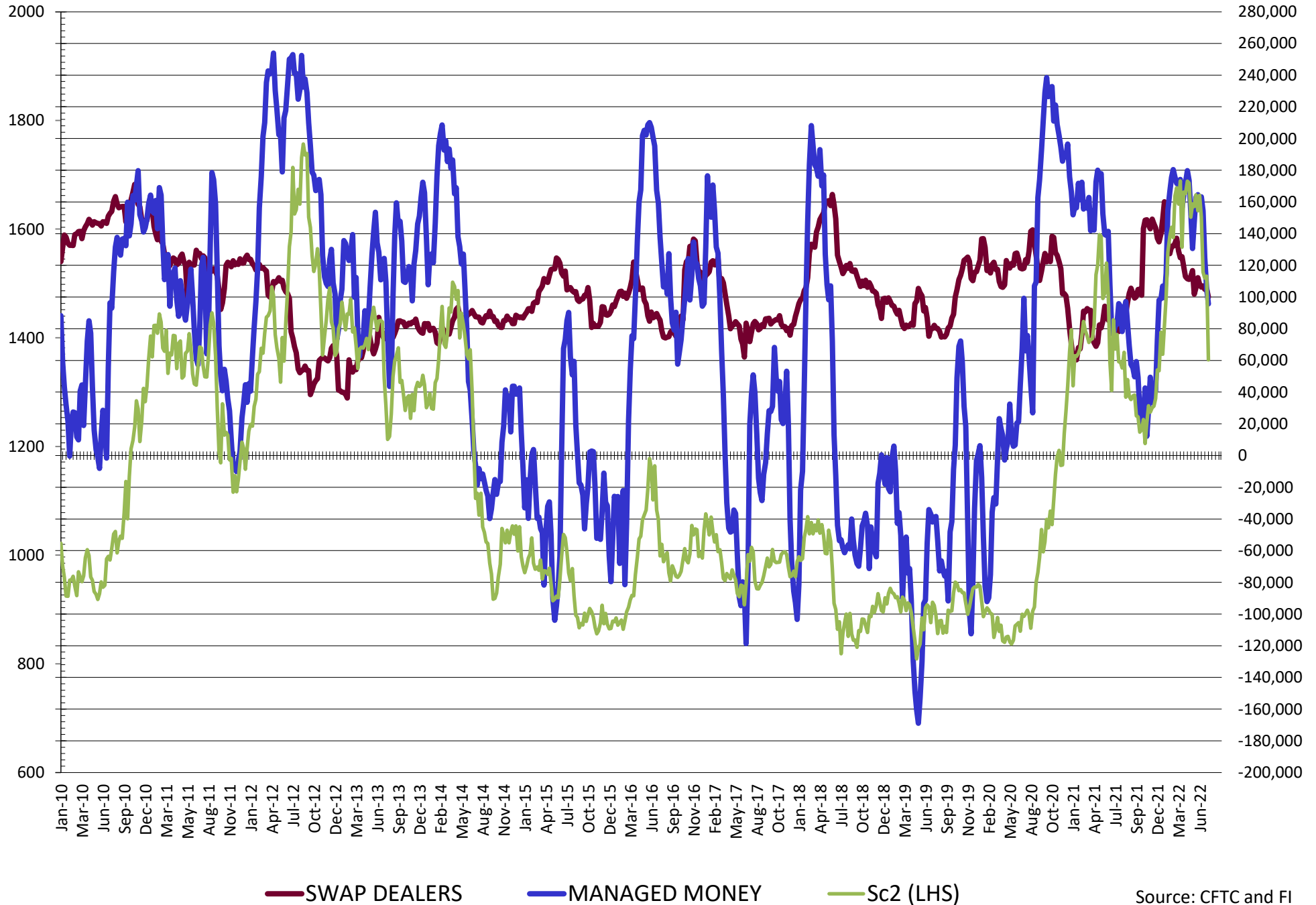
**DISAGGREGATED COMMITMENT OF TRADERS
FUTURES & OPTIONS NET POSITIONS
AS OF 07/12/2022
(IN THOUSAND CONTRACTS)**

	PRODUCER / MERCHANT / PROCESSOR / USER				(INDEX/ETF) SWAP DEALERS				(CTA/CPO/OTHER UNREGISTERED) MANAGED MONEY			
	12-Jul	5-Jul	28-Jun	21-Jun	12-Jul	5-Jul	28-Jun	21-Jun	12-Jul	5-Jul	28-Jun	21-Jun
	WHEAT											
Chicago	(51.1)	(58.7)	(60.8)	(70.3)	62.3	61.5	57.0	55.9	(6.4)	(0.0)	1.0	3.9
Kansas City	(35.4)	(39.5)	(44.1)	(52.5)	26.2	25.8	26.6	28.2	16.4	22.0	24.9	32.6
Minneapolis	(5.3)	(6.4)	(12.2)	(20.0)	1.2	0.7	0.4	0.7	2.7	5.1	8.1	12.4
All Wheat	(91.8)	(104.7)	(117.1)	(142.8)	89.7	87.9	84.0	84.9	12.6	27.1	34.0	49.0
CORN	(411.5)	(428.7)	(507.5)	(565.5)	262.8	270.0	264.2	267.0	151.2	172.9	228.6	265.3
OATS	0.0	0.0	(0.4)	0.0	0.0	0.0	0.1	0.0	0.0	0.0	(0.1)	0.0
SOYBEANS	(157.2)	(168.3)	(191.9)	(232.9)	100.1	105.1	104.9	107.0	95.7	105.0	124.5	154.4
SOY OIL	(105.6)	(116.8)	(130.0)	(153.8)	77.0	80.2	79.6	79.5	18.9	24.9	33.6	50.9
SOY MEAL	(189.9)	(184.3)	(188.4)	(195.0)	80.7	82.1	82.0	85.9	68.3	65.8	62.5	60.4

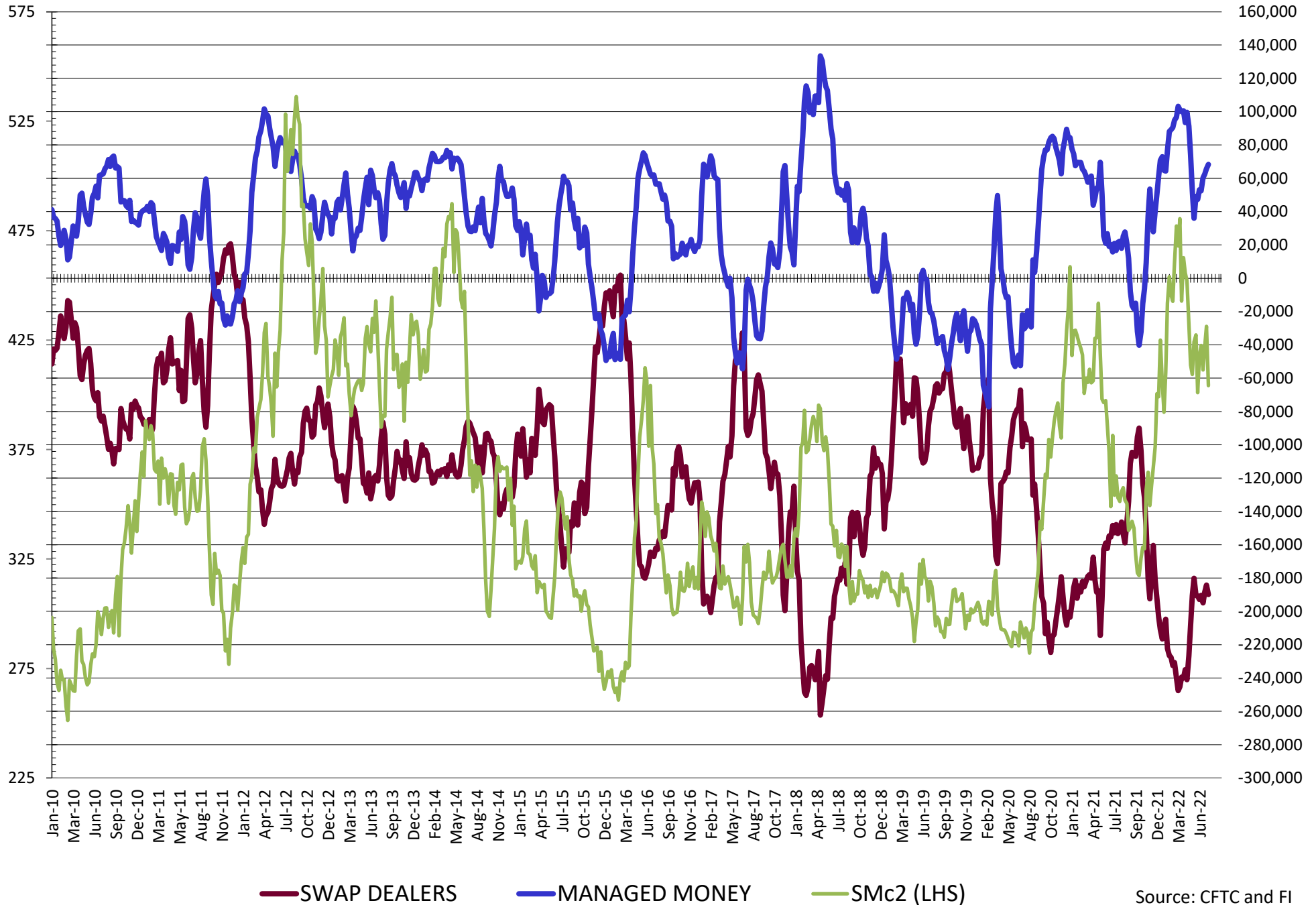
	TOTAL OPEN INTEREST				OTHER REPORTABLE				NON REPORTABLE			
	12-Jul	5-Jul	28-Jun	21-Jun	12-Jul	5-Jul	28-Jun	21-Jun	12-Jul	5-Jul	28-Jun	21-Jun
	WHEAT											
Chicago	398,172	387,076	375,548	453,012	4.1	5.8	8.2	13.9	(8.9)	(8.5)	(5.5)	(3.5)
Kansas City	172,630	170,838	171,480	199,865	(4.5)	(5.1)	(4.5)	(4.0)	(2.7)	(3.2)	(2.8)	(4.3)
Minneapolis	63,187	65,698	67,349	72,303	2.7	2.2	3.1	3.2	(1.2)	(1.5)	0.7	3.7
All Wheat	633,989	623,612	614,377	725,180	2.3	2.8	6.8	13.1	(12.8)	(13.2)	(7.6)	(4.1)
CORN	1,906,814	1,854,508	1,855,971	2,199,804	48.9	44.1	67.9	82.4	(51.3)	(58.2)	(58.2)	(58.2)
OATS	0	0	2,777	0	0.0	0.0	0.2	0.0	0.0	0.0	0.1	0.0
SOYBEANS	790,441	805,841	800,466	959,863	(5.7)	(3.6)	(3.3)	(1.0)	(32.9)	(38.1)	(34.2)	(27.6)
SOY OIL	427,432	414,025	404,637	451,454	6.6	7.3	8.6	12.8	3.2	4.4	8.3	10.6
SOY MEAL	440,090	435,036	430,815	456,803	19.2	17.7	20.6	21.3	21.7	18.7	23.4	27.4

SOURCE: CFTC & FI

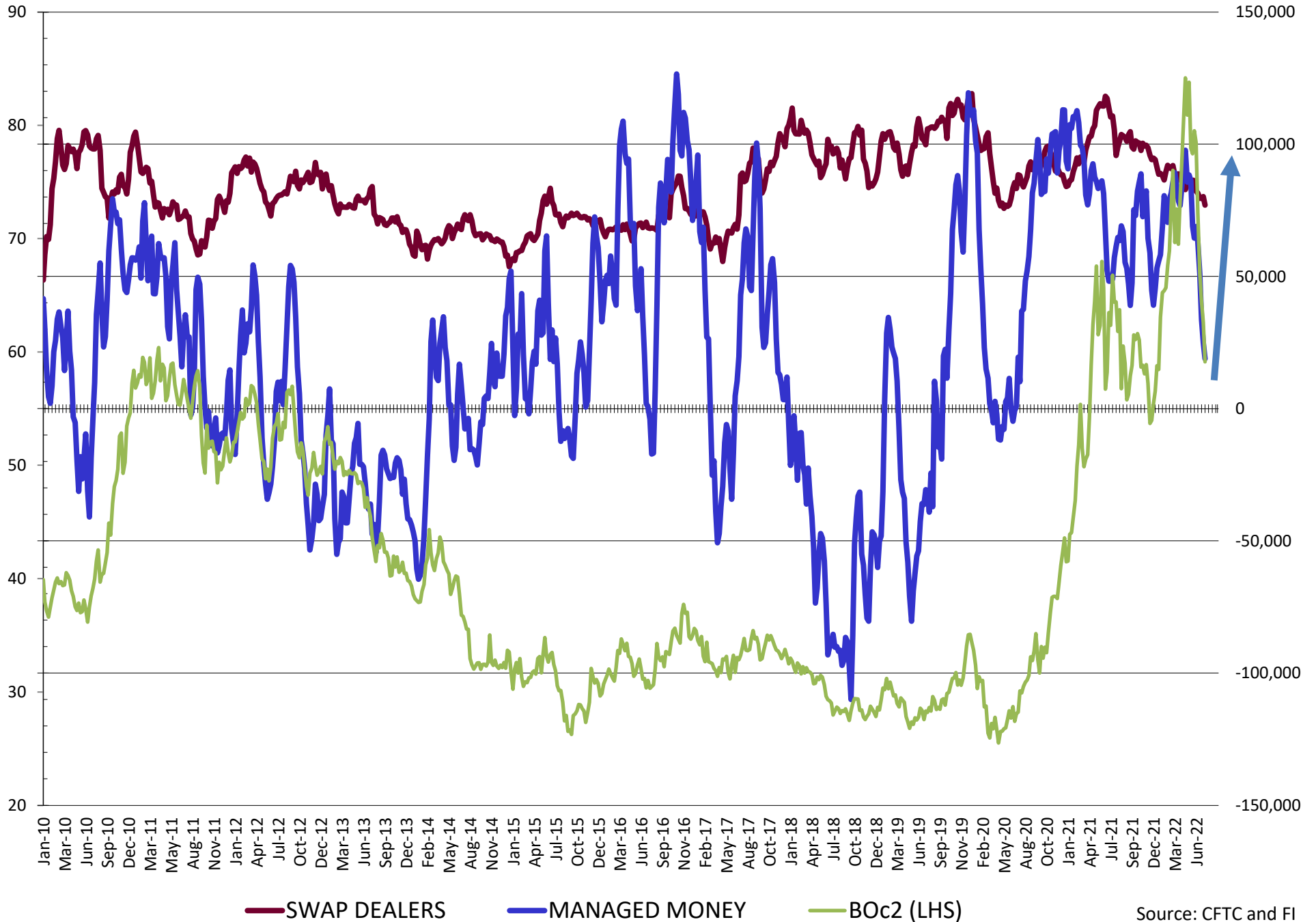
NET POSITION FUTURES AND OPTIONS OF SWAP AND MANAGED FUNDS IN SOYBEANS



NET POSITION FUTURES AND OPTIONS OF SWAP AND MANAGED FUNDS IN SOYBEAN MEAL

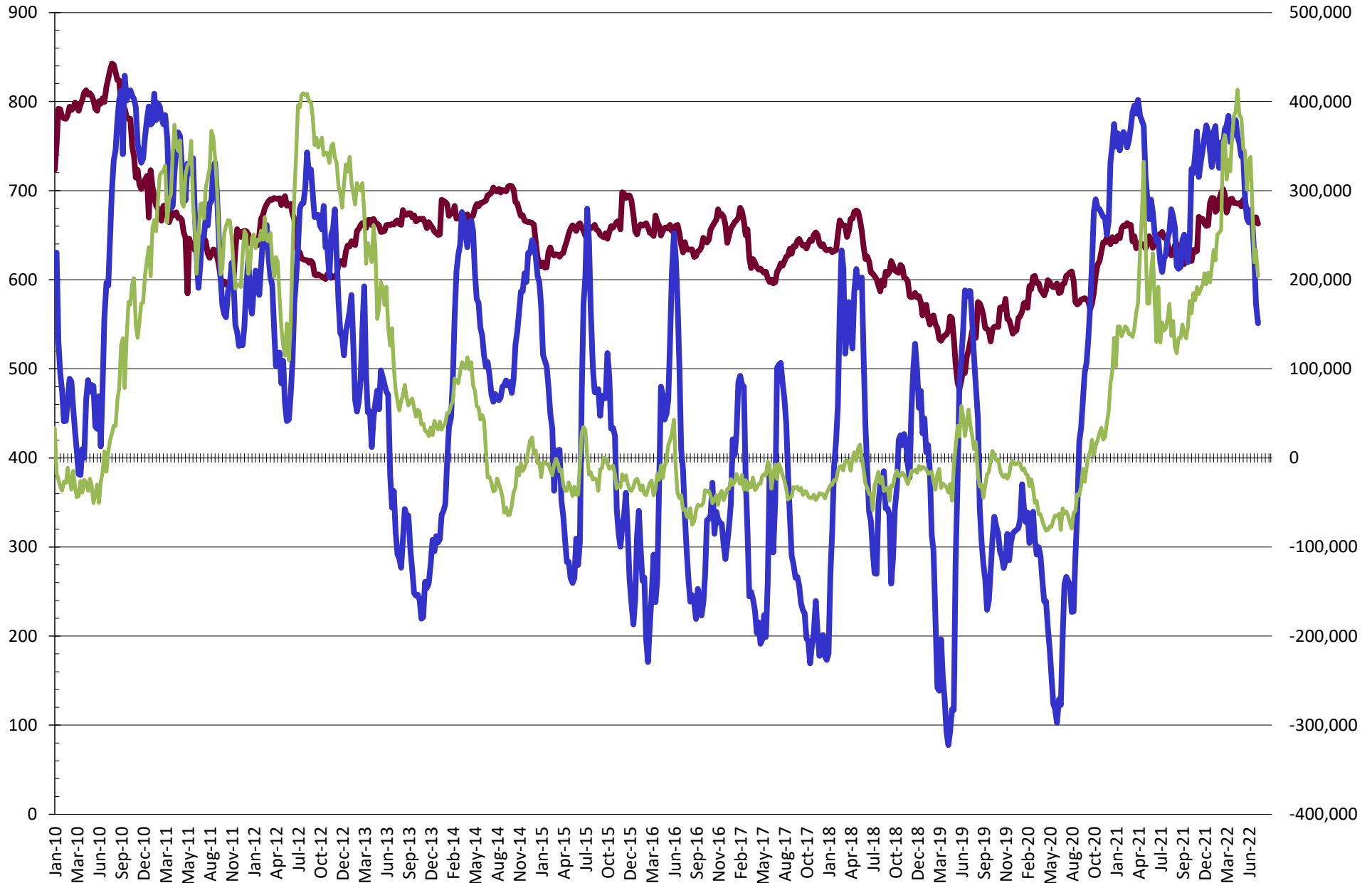


NET POSITION FUTURES AND OPTIONS OF SWAP AND MANAGED FUNDS IN SOYBEAN OIL



Source: CFTC and FI
7/16/2022

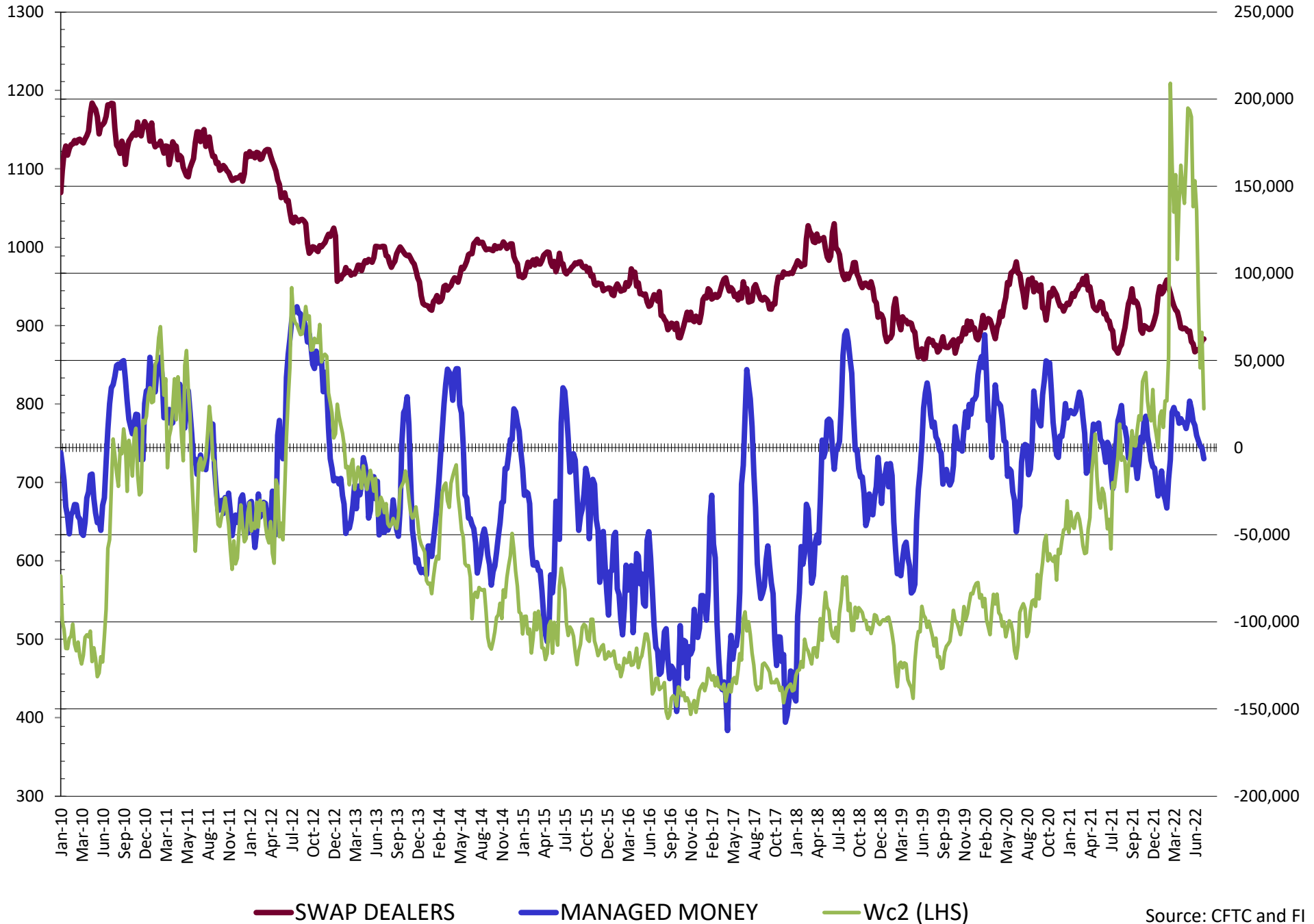
NET POSITION FUTURES AND OPTIONS OF SWAP AND MANAGED FUNDS IN CORN



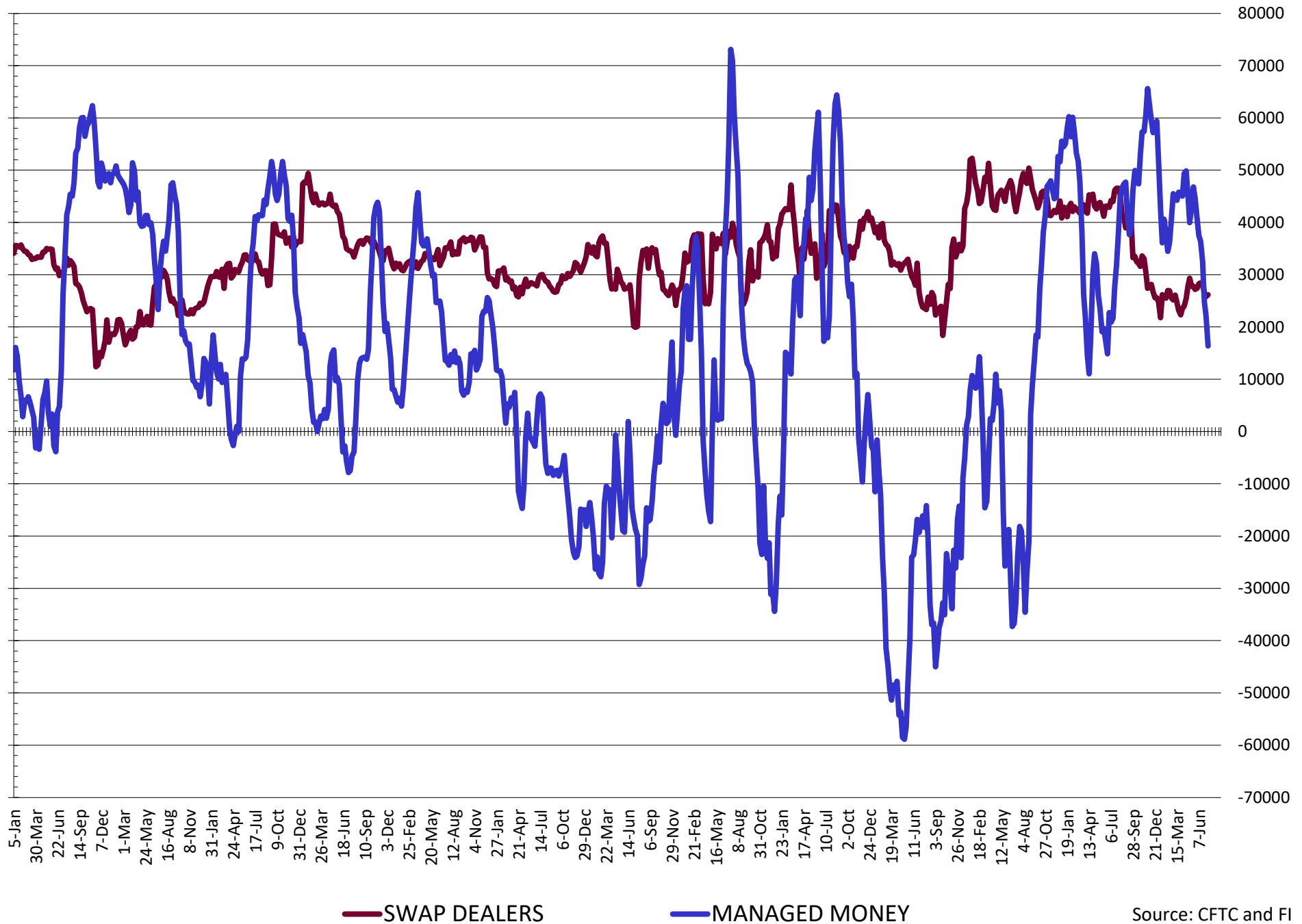
— SWAP DEALERS
 — MANAGED MONEY
 — Cc2 (LHS)

Source: CFTC and FI
7/16/2022

NET POSITION FUTURES AND OPTIONS OF SWAP AND MANAGED FUNDS IN CHICAGO WHEAT

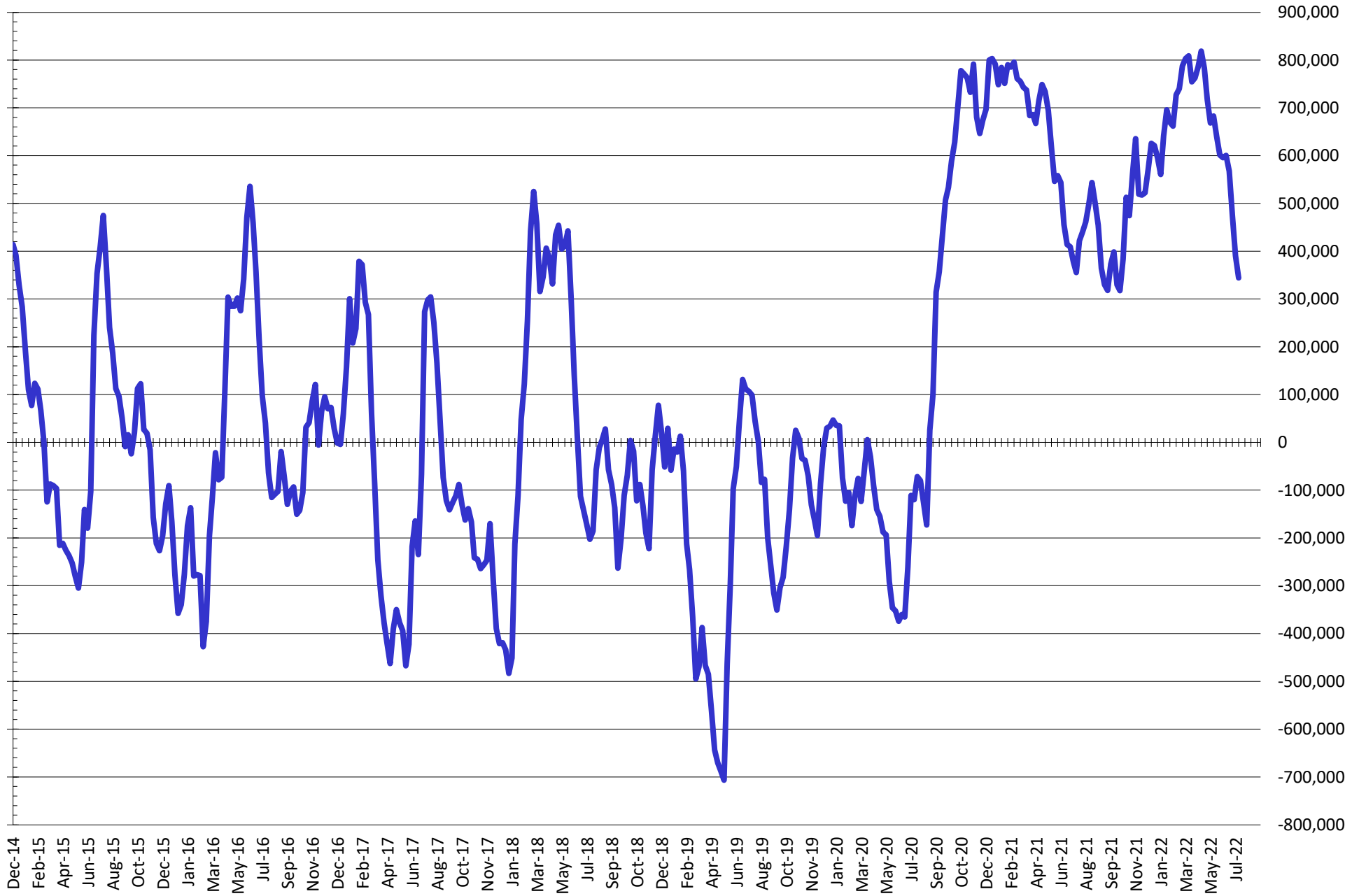


NET POSITION FUTURES AND OPTIONS OF SWAP AND MANAGED FUNDS IN KANSAS WHEAT



Source: CFTC and FI
7/16/2022

NET POSITION FUTURES AND OPTIONS OF SWAP AND MANAGED FUNDS IN COMBINED SRW, HRW, CORN, SOYBEANS, SOYMEAL AND SOYOIL



— Net Managed Money

Source: CFTC and FI
7/16/2022

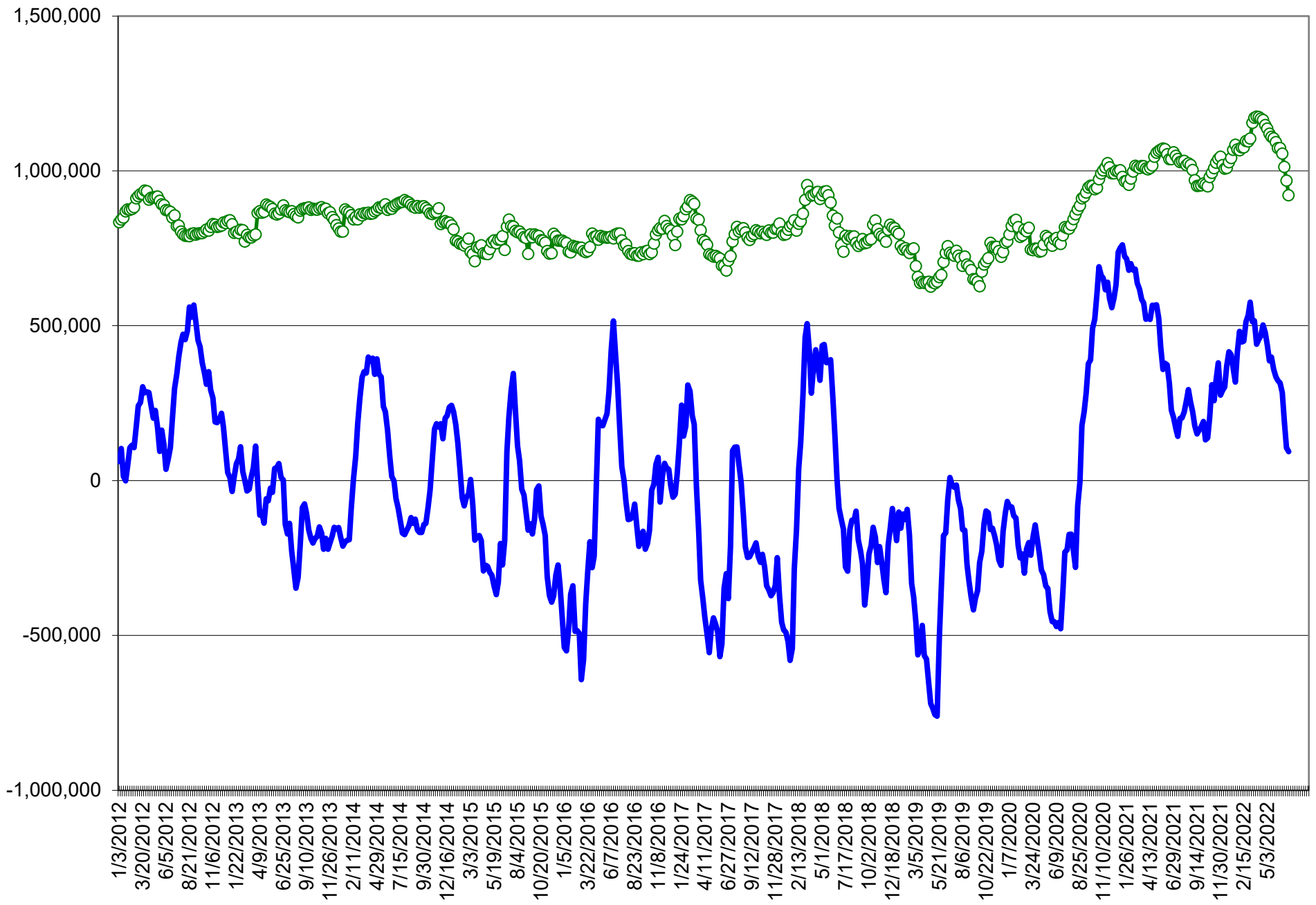
COMMITMENT OF TRADERS
FUTURES & OPTIONS NET POSITIONS (INDEX BROKEN OUT)
AS OF 07/12/2022
(IN THOUSAND CONTRACTS)

	COMMERCIAL				(FUND) NON COMMERCIAL				(SPEC) NON-REPORTABLE			
	12-Jul	5-Jul	28-Jun	21-Jun	12-Jul	5-Jul	28-Jun	21-Jun	12-Jul	5-Jul	28-Jun	21-Jun
	WHEAT											
Chicago	(64.5)	(73.5)	(82.8)	(96.1)	(48.2)	(47.4)	(47.7)	(42.4)	(8.9)	(8.5)	(5.5)	(3.5)
Kansas City	(41.5)	(46.6)	(51.8)	(58.6)	(5.5)	(3.0)	(0.8)	2.1	(2.7)	(3.2)	(2.8)	(4.3)
Minneapolis	-	-	-	-	-	-	-	-	-	-	-	-
All Wheat	(106.0)	(120.1)	(134.6)	(154.7)	(53.7)	(50.4)	(48.5)	(40.3)	(11.6)	(11.7)	(8.3)	(7.8)
CORN	(407.1)	(420.8)	(509.9)	(571.4)	66.9	73.4	138.4	178.3	(51.3)	(58.2)	(53.2)	(49.2)
OATS	-	-	-	-	-	-	-	-	-	-	-	-
SOYBEANS	(154.1)	(165.6)	(193.3)	(235.9)	30.7	33.6	46.1	66.3	(32.9)	(38.1)	(34.2)	(27.6)
SOY OIL	(95.6)	(107.3)	(123.0)	(146.9)	0.5	6.3	15.2	37.2	3.2	4.4	8.3	10.6
SOY MEAL	(181.2)	(175.4)	(181.0)	(183.6)	49.0	42.5	42.1	42.2	21.7	18.7	23.4	27.4

	TOTAL OPEN INTEREST				(INDEX) COMMERCIAL INDEX TRADERS				(INDEX) % NET OF TOTAL OPEN INTEREST			
	12-Jul	5-Jul	28-Jun	21-Jun	12-Jul	5-Jul	28-Jun	21-Jun	12-Jul	5-Jul	28-Jun	21-Jun
	WHEAT											
Chicago	398,172	387,076	375,548	453,012	121.5	129.4	136.0	141.9	30.5%	33.4%	36.2%	31.3%
Kansas City	172,630	170,838	171,480	199,865	49.7	52.8	55.4	60.8	28.8%	30.9%	32.3%	30.4%
Minneapolis	-	-	-	-	-	-	-	-	-	-	-	-
All Wheat	570,802	557,914	547,028	652,877	171.2	182.2	191.4	202.7	30.0%	32.7%	35.0%	31.1%
CORN	1,906,814	1,854,508	1,855,971	2,199,804	391.6	405.6	424.7	442.3	20.5%	21.9%	22.9%	20.1%
OATS	-	-	-	-	-	-	-	-	-	-	-	-
SOYBEANS	790,441	805,841	800,466	959,863	156.3	170.2	181.4	197.3	19.8%	21.1%	22.7%	20.6%
SOY OIL	427,432	414,025	404,637	451,454	92.0	96.6	99.5	99.1	21.5%	23.3%	24.6%	22.0%
SOY MEAL	440,090	435,036	430,815	456,803	110.5	114.2	115.6	114.0	25.1%	26.2%	26.8%	25.0%

SOURCE: CFTC & FI

NET POSITION FUTURES AND OPTIONS OF SPECULATORS AND INDEX FUNDS IN COMBINED SRW, HRW, CORN, SOYBEANS, SOYMEAL AND SOYOIL



Source: CFTC and FI

○ Net Index — Net Speculator

Traditional Daily Estimate of Funds 7/12/22

	(Neg)-"Short"	Pos-"Long"			
Actual less Est.	(21.5)	(21.4)	(4.3)	(2.0)	(6.4)
	Corn	Bean	Chi. Wheat	Meal	Oil
Actual	247.2	115.1	4.6	100.4	29.8
13-Jul	7.0	5.0	0.0	5.0	(3.0)
14-Jul	6.0	(5.0)	(4.0)	2.0	(3.0)
15-Jul	0.0	0.0	(7.0)	(5.0)	6.0
18-Jul					
19-Jul					
FI Est. of Futures Only 7/12/22	260.2	115.1	(6.4)	102.4	29.8
FI Est. Futures & Options	213.1	90.0	(13.4)	89.5	25.5
Futures only record long "Traditional Funds"	547.7 1/26/2021	280.9 11/10/2020	86.5 8/7/2018	167.5 5/1/2018	160.2 11/1/2016
Futures only record short	(235.0) 6/9/2020	(118.3) 4/30/2019	(130.0) 4/25/2017	(49.5) 3/1/2016	(69.8) 9/18/2018
Futures and options record net long	557.6 1/12/2021	270.9 10/6/2020	64.8 8/7/2012	132.1 5/1/2018	159.2 1/1/2016
Futures and options record net short	(270.6) 4/26/2019	(132.0) 4/30/2019	(143.3) 4/25/2017	(64.1) 3/1/2016	(77.8) 9/18/2018

Managed Money Daily Estimate of Funds 7/12/22

	Corn	Bean	Chi. Wheat	Meal	Oil
Latest CFTC Fut. Only	128.5	90.7	(10.4)	67.6	17.8
Latest CFTC F&O	151.2	95.7	(6.4)	68.3	18.9
FI Est. Managed Fut. Only	142	91	(21)	70	18
FI Est. Managed Money F&O	164	96	(17)	70	19

Index Funds Latest Positions (as of last Tuesday)

Index Futures & Options	391.6	156.3	121.5	NA	92.0
Change From Previous Week	(14.0)	(13.9)	(7.9)	NA	(4.6)

Source: Reuters, CFTC & FI (FI est. are noted with latest date)

Disclaimer

TO CLIENTS/PROSPECTS OF FUTURES INTERNATIONAL, SEE RISK DISCLOSURE BELOW:

THIS COMMUNICATION IS CONVEYED AS A SOLICITATION FOR ENTERING INTO A DERIVATIVES TRANSACTION.

Any trading recommendations and market or other information to Customer by Futures International (FI), although based upon information obtained from sources believed by FI to be reliable may not be accurate and may be changed without notice to customer. FI makes no guarantee as to the accuracy or completeness of any of the information or recommendations furnished to Customer. Customer understands that FI, its managers, employees and/or affiliates may have a position in commodity futures, options or other derivatives which may not be consistent with the recommendations furnished by FI to Customer.

The risk of trading futures and options and other derivatives involves a substantial risk of loss and is not suitable for all persons. In purchasing an option, the risk is limited to the premium paid, and all commissions and fees involved with the trade. When an option is shorted or written, the writer of the option has unlimited risk with respect to the option written. The use of options strategies such as a straddles and strangles involve multiple option positions and may substantially increase the amount of commissions and fees paid to execute the strategy. Option prices do not necessarily move in tandem with cash or futures prices. Each person must consider whether a particular trade, combination of trades or strategy is suitable for that person's financial means and objectives.

This material may include discussions of seasonal patterns, however, futures prices have already factored in the seasonal aspects of supply and demand, and seasonal patterns are no indication of future market trends. Finally, past performance is not indicative of future results.

This communication may contain links to third party websites which are not under the control of FI and FI is not responsible for their content. Products and services are offered only in jurisdictions where solicitation and sale are lawful, and in accordance with applicable laws and regulations in each such jurisdiction.