

	Current	Δ from YD	Δ from 7D Avg
Nat Gas Prompt	\$ 6.73	▲ \$ 0.31	▲ \$ 0.75

	Current	Δ from YD	Δ from 7D Avg
WTI Prompt	\$ 99.52	▼ \$ (4.57)	▼ \$ (3.2)

	Current	Δ from YD	Δ from 7D Avg
Brent Prompt	\$ 102.72	▼ \$ (4.38)	▼ \$ (2.5)

Page Menu

[Short-term Weather Model Outlooks](#)

[Lower 48 Component Models](#)

[Regional S/D Models Storage Projection](#)

[Weather Model Storage Projection](#)

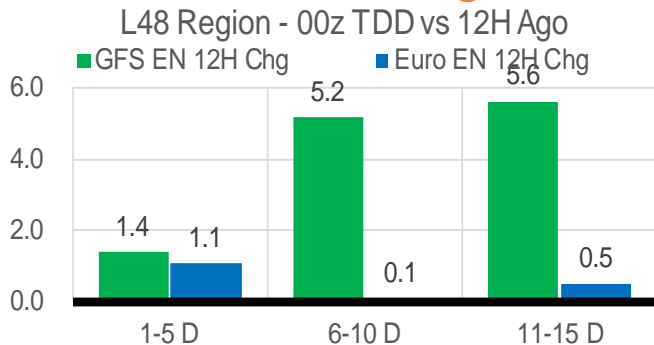
[Supply – Demand Trends](#)

[Nat Gas Options Volume and Open Interest](#)

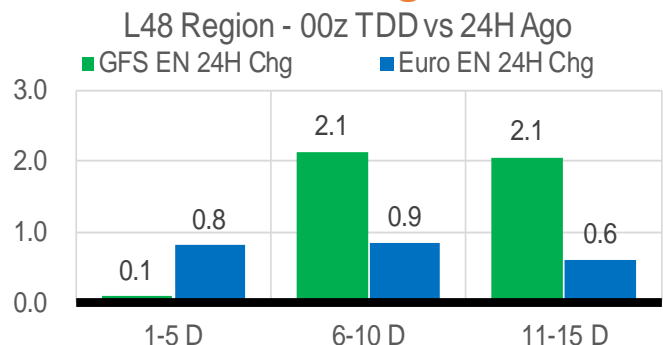
[Nat Gas Futures Open Interest](#)

[Price Summary](#)

Vs. 12H Ago



Vs. 24H Ago



	Current	Δ from YD	Δ from 7D Avg
US Dry Production	94.7	▼ -1.84	▼ -1.98

	Current	Δ from YD	Δ from 7D Avg
US Power Burns	43.1	▲ 0.67	▲ 1.10

	Current	Δ from YD	Δ from 7D Avg
US ResComm	8.5	▲ 0.15	▲ 0.21

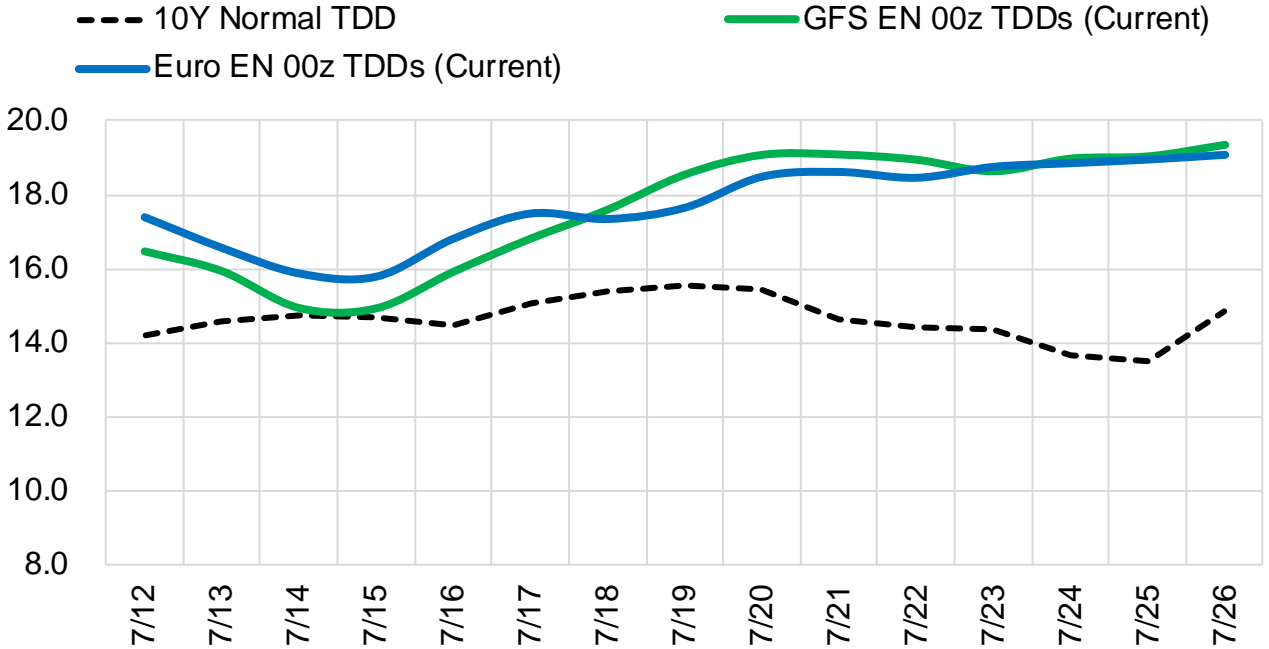
	Current	Δ from YD	Δ from 7D Avg
Canadian Imports	6.4	▲ 0.56	▲ 0.51

	Current	Δ from YD	Δ from 7D Avg
Net LNG Exports	11.1	▼ 0.00	▲ 0.02

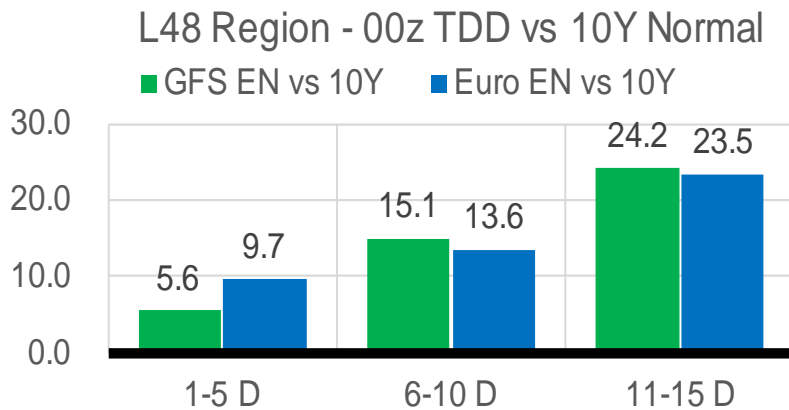
	Current	Δ from YD	Δ from 7D Avg
Mexican Exports	7.0	▲ 0.18	▲ 0.23

Short-term Weather Model Outlooks (00z)

L48 Region



Vs. 10Y Normal



Source: WSI , Bloomberg

Lower 48 Component Models

Daily Balances

	6-Jul	7-Jul	8-Jul	9-Jul	10-Jul	11-Jul	12-Jul	DoD	vs. 7D
Lower 48 Dry Production	96.6	96.4	97.0	96.4	96.5	96.5	94.7	▼ -1.8	▼ -1.9
Canadian Imports	6.4	6.0	6.0	5.5	5.6	5.8	6.4	▲ 0.6	▲ 0.5
L48 Power	43.9	43.9	43.4	39.2	38.5	42.4	43.1	▲ 0.7	▲ 1.2
L48 Residential & Commercial	8.6	8.5	8.3	8.0	8.0	8.4	8.5	▲ 0.1	▲ 0.2
L48 Industrial	20.4	20.3	20.3	20.5	20.5	20.6	20.5	▼ -0.1	▲ 0.1
L48 Lease and Plant Fuel	5.2	5.2	5.3	5.2	5.2	5.2	5.1	▼ -0.1	▼ -0.1
L48 Pipeline Distribution	2.8	2.8	2.8	2.5	2.5	2.7	2.8	▲ 0.0	▲ 0.1
L48 Regional Gas Consumption	80.9	80.7	80.1	75.4	74.7	79.4	80.0	▲ 0.7	▲ 1.5
Net LNG Delivered	11.28	11.19	11.27	11.06	10.85	11.14	11.14	▼ 0.0	▲ 0.0
Total Mexican Exports	7.0	6.8	6.9	6.6	6.6	6.9	7.0	▲ 0.2	▲ 0.2
Implied Daily Storage Activity	3.8	3.7	4.7	8.9	10.0	4.9	2.8		
EIA Reported Daily Storage Activity									
Daily Model Error									

EIA Storage Week Balances

	3-Jun	10-Jun	17-Jun	24-Jun	1-Jul	8-Jul	WoW	vs. 4W
Lower 48 Dry Production	97.2	96.9	96.7	96.7	97.0	97.0	▼ -0.1	▲ 0.1
Canadian Imports	4.8	5.5	6.1	5.6	5.7	5.6	▼ -0.1	▼ -0.1
L48 Power	30.3	32.3	37.8	37.7	40.2	41.3	▲ 1.1	▲ 4.3
L48 Residential & Commercial	9.1	8.6	8.3	8.7	8.2	8.3	▲ 0.1	▼ -0.2
L48 Industrial	21.4	21.3	21.5	20.1	21.0	20.2	▼ -0.8	▼ -0.8
L48 Lease and Plant Fuel	5.2	5.2	5.2	5.2	5.3	5.3	▲ 0.0	▲ 0.0
L48 Pipeline Distribution	2.2	2.2	2.5	2.5	2.6	2.6	▲ 0.0	▲ 0.2
L48 Regional Gas Consumption	68.3	69.7	75.3	74.2	77.3	77.7	▲ 0.4	▲ 3.6
Net LNG Exports	12.8	12.3	10.7	10.6	10.6	11.2	▲ 0.6	▲ 0.1
Total Mexican Exports	7.1	7.1	7.2	7.0	7.0	6.7	▼ -0.3	▼ -0.3
Implied Daily Storage Activity	13.9	13.2	9.6	10.5	7.7	7.0	-0.8	
EIA Reported Daily Storage Activity	14.6	13.1	10.6	11.7	8.6			
Daily Model Error	-0.6	0.1	-1.0	-1.2	-0.8			

Monthly Balances

	2Yr Ago Jul-20	LY Jul-21	Mar-22	Apr-22	May-22	Jun-22	MTD Jul-22	MoM	vs. LY
Lower 48 Dry Production	89.0	93.5	93.4	95.2	96.2	96.8	96.8	▼ 0.0	▲ 3.4
Canadian Imports	4.4	5.2	5.2	5.8	5.1	5.7	5.7	▲ 0.0	▲ 0.5
L48 Power	43.8	39.7	25.4	24.7	28.8	36.8	41.1	▲ 4.3	▲ 1.5
L48 Residential & Commercial	7.9	8.1	31.5	22.5	12.3	8.5	8.2	▼ -0.2	▲ 0.1
L48 Industrial	20.1	20.8	19.7	21.5	21.1	20.8	20.3	▼ -0.5	▼ -0.5
L48 Lease and Plant Fuel	4.9	5.1	5.2	5.2	5.2	5.2	5.2	▲ 0.0	▲ 0.2
L48 Pipeline Distribution	2.6	2.5	2.9	2.6	2.3	2.5	2.6	▲ 0.2	▲ 0.1
L48 Regional Gas Consumption	79.3	76.2	84.7	76.6	69.8	73.8	77.6	▲ 3.8	▲ 1.4
Net LNG Exports	3.3	10.8	12.9	12.3	12.5	11.2	11.2	▼ 0.0	▲ 0.4
Total Mexican Exports	5.9	7.1	6.5	6.7	7.0	7.1	6.7	▼ -0.3	▼ -0.3
Implied Daily Storage Activity	4.9	4.6	-5.4	5.4	12.0	10.5	7.0		
EIA Reported Daily Storage Activity									
Daily Model Error									

Source: Bloomberg, analytix.ai

Daily Average Generation Data

Nuclear Generation Daily Average - GWh (NRC)

	4-Jul	5-Jul	6-Jul	7-Jul	8-Jul	9-Jul	10-Jul	DoD	vs. 7D
NRC Nuclear Daily Output	90.7	90.9	91.1	91.4	91.8	91.0	91.3	0.3	0.1
NRC Nuclear Max Capacity	104.9	104.9	104.9	104.9	104.9	104.9	104.9	0.0	0.0
NRC Nuclear Outage	14.2	14.0	13.8	13.5	13.1	13.8	13.6	-0.3	-0.1
NRC % Nuclear Cap Utilization	92.2	92.4	92.6	92.9	93.4	92.6	92.8	0.3	0.2

Wind Generation Daily Average - MWh (EIA)

	4-Jul	5-Jul	6-Jul	7-Jul	8-Jul	9-Jul	10-Jul	DoD	vs. 7D
CALI Wind	2048	2048	2048	2048	2048	2048	2048	0	0
TEXAS Wind	22879	22879	22879	22879	22879	22879	22879	0	0
US Wind	63443	63443	63443	63443	63443	63443	63443	0	0

EIA 930 data is not being updated. EIA experiencing some issues.

Generation Daily Average - MWh (EIA)

	4-Jul	5-Jul	6-Jul	7-Jul	8-Jul	9-Jul	10-Jul	DoD	vs. 7D
Genscape Wind	57209	54309	38704	30219	30526	0	0	0	-35161
US Solar	19728	19728	19728	19728	19728	19728	19728	0	0
US Petroleum	1333	1333	1333	1333	1333	1333	1333	0	0
US Other	9775	9775	9775	9775	9775	9775	9775	0	0
US Coal	119543	119543	119543	119543	119543	119543	119543	0	0
US Nuke	90696	90696	90696	90696	90696	90696	90696	0	0
US Hydro	39690	39690	39690	39690	39690	39690	39690	0	0
US Gas	220700	220700	220700	220700	220700	220700	220700	0	0

See National Wind and Nuclear daily charts

Source: Bloomberg, analytix.ai

Storage Week Average Generation Data

Nuclear Generation Weekly Average - GWh (NRC)

	3-Jun	10-Jun	17-Jun	24-Jun	1-Jul	8-Jul	WoW	WoW Bcf/d Impact
NRC Nuclear Daily Output	86.2	88.3	88.2	89.0	88.9	90.6	1.7	-0.3
NRC Nuclear Max Capacity	104.9	104.9	104.9	104.9	104.9	104.9	0.0	
NRC Nuclear Outage	18.7	16.6	16.7	15.9	16.0	14.2	-1.7	
NRC % Nuclear Cap Utilization	87.6	89.8	89.7	90.5	90.4	92.2	1.8	

Wind Generation Weekly Average - MWh (EIA)

	3-Jun	10-Jun	17-Jun	24-Jun	1-Jul	8-Jul	WoW	WoW Bcf/d Impact
CALI Wind	3268	3842	3032	2048	2048	2048	0	0.0
TEXAS Wind	17915	12449	20462	22879	22879	22879	0	0.0
US Wind	57939	37417	57090	63443	63443	63443	0	0.0
							0%	

Generation Weekly Average - MWh (EIA)

	3-Jun	10-Jun	17-Jun	24-Jun	1-Jul	8-Jul	WoW	WoW Bcf/d Impact
Genscape Wind	59474	38198	57792	50581	45558	42730	-2828	0.5
US Solar	18656	18807	18731	19728	19728	19728	0	0.0
US Petroleum	863	968	1244	1333	1333	1333	0	0.0
US Other	7866	8001	8688	9775	9775	9775	0	0.0
US Coal	89706	95415	106566	119543	119543	119543	0	0.0
US Nuke	89728	91641	91235	90696	90696	90696	0	0.0
US Hydro	35051	36328	37495	39690	39690	39690	0	0.0
US Gas	163383	178204	201845	220700	220700	220700	0	0.0

EIA 930 data is not being updated. EIA experiencing some issues.

See National Wind and Nuclear daily charts

Source: Bloomberg, analytix.ai

Monthly Average Generation Data

Nuclear Generation Monthly Average - GWh (NRC)

	2Yr Ago	LY	MTD						
	Same 30 days	Same 30 days	Apr-22	May-22	Jun-22	Jul-22	Last 30 days	MoM (MTD vs LY)	Last 30 days YoY
NRC Nuclear Daily Output	91.7	89.1	73.4	81.7	88.5	91.0	89.7	2.5	0.5
NRC Nuclear Max Capacity	104.9	104.9	104.9	104.9	104.9	104.9	104.9	0.0	0.0
NRC Nuclear Outage	13.2	15.8	31.5	23.2	16.3	12.8	14.8	-3.6	-1.0
NRC % Nuclear Cap Utilization	93.2	90.6	74.6	83.0	90.0	92.5	91.2	2.5	0.6

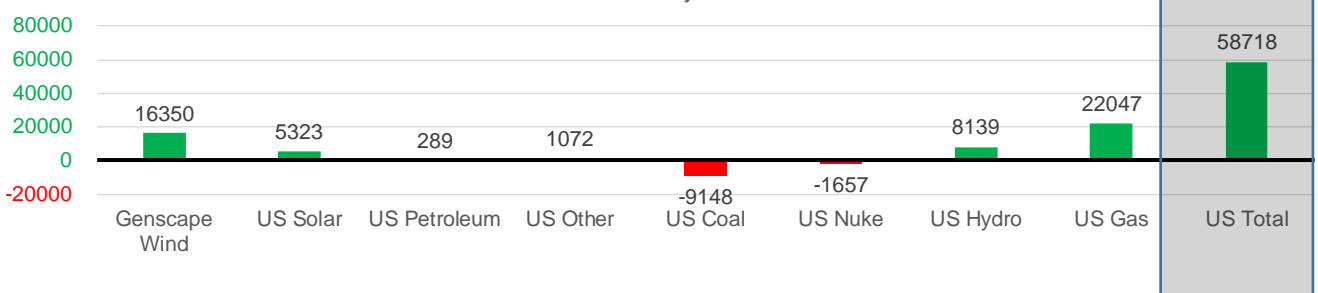
Wind Generation Monthly Average - MWh (EIA)

	2Yr Ago	LY	MTD						
	Same 30 days	Same 30 days	Apr-22	May-22	Jun-22	Jul-22	Last 30 days	MoM (MTD vs LY)	Last 30 days YoY
CALI Wind	2746	2627	3218	3361	2724	2048	2122	-676	-504
TEXAS Wind	11618	7991	16384	16756	19072	22879	22962	3807	14971
US Wind	36929	33536	64240	56462	54014	63443	64119	9428	30583

Generation Monthly Average - MWh (EIA)

	2Yr Ago	LY	MTD						
	Same 30 days	Same 30 days	Apr-22	May-22	Jun-22	Jul-22	Last 30 days	MoM (MTD vs LY)	Last 30 days YoY
Genscape Wind	38092	32815	63684	56803	47280	41204	49165	▲7960.7	▲16350
US Solar	12271	14272	16265	18186	19216	19728	19595	▼-133.2	▲5323
US Petroleum	1209	1056	979	518	1204	1333	1346	▲13	▲289
US Other	9213	8647	7373	7724	8994	9775	9719	▼-56	▲1072
US Coal	101785	128040	77400	85273	109706	119543	118892	▼-651	▼-9148
US Nuke	94846	92386	77317	85496	91073	90696	90728	▲33	▼-1657
US Hydro	35522	31357	28877	31369	38153	39690	39496	▼-193	▲8139
US Gas	203175	198024	132665	157565	204668	220700	220071	▲6972	▲22047
US Total	493437	507557	405650	443965	530484	566968	566275	▲5983	▲58718

Last 30 days YoY



See National Wind and Nuclear daily charts

Source: Bloomberg, analytix.ai

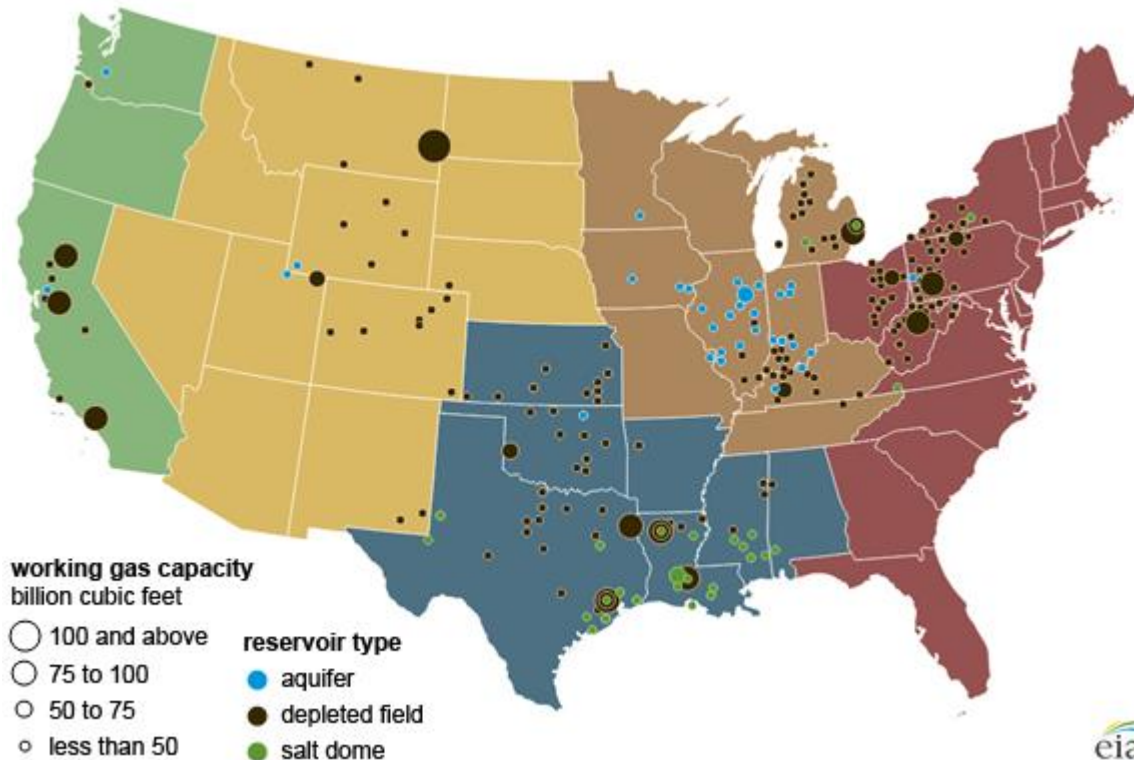
Regional S/D Models Storage Projection

Week Ending 8-Jul

	Daily Raw Storage	Daily Adjustment Factor	Daily Average Storage Activity (Adjusted) *	Weekly Adjusted Storage Activity
L48	8.1	-0.5	7.6	53
East	0.7	1.8	2.5	18
Midwest	3.6	-1.2	2.5	17
Mountain	4.7	-4.0	0.7	5
South Central	-3.2	3.6	0.5	3
Pacific	2.3	-0.8	1.5	10

*Adjustment Factor is calculated based on historical regional deltas

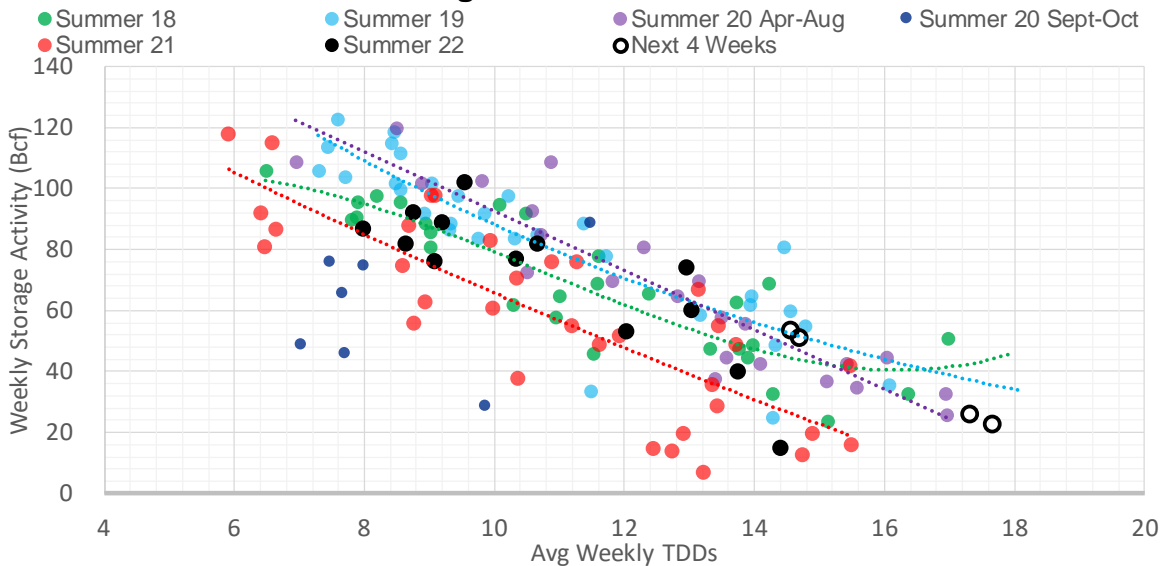
U.S. underground natural gas storage facilities by type (July 2015)



Weather Model Storage Projection

Next report and beyond		
Week Ending	GWDDs	Week Storage Projection
08-Jul	14.6	53
15-Jul	14.7	51
22-Jul	17.7	23
29-Jul	17.3	26

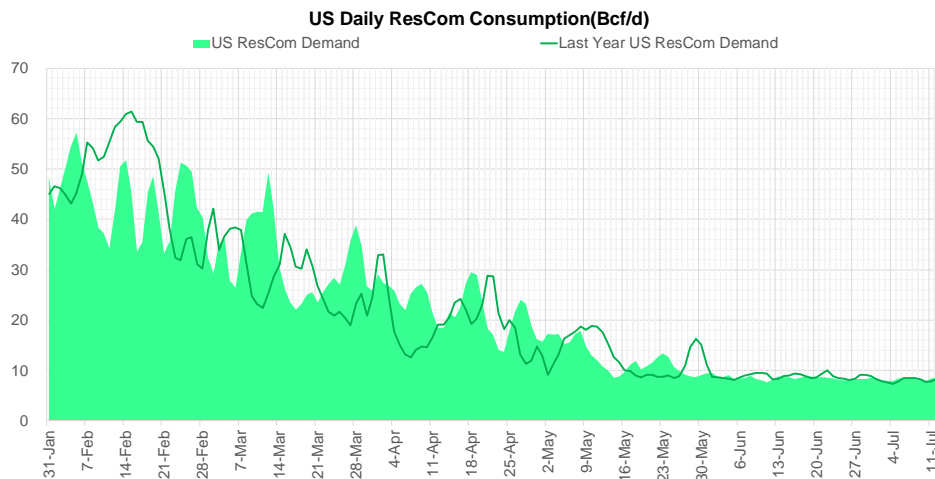
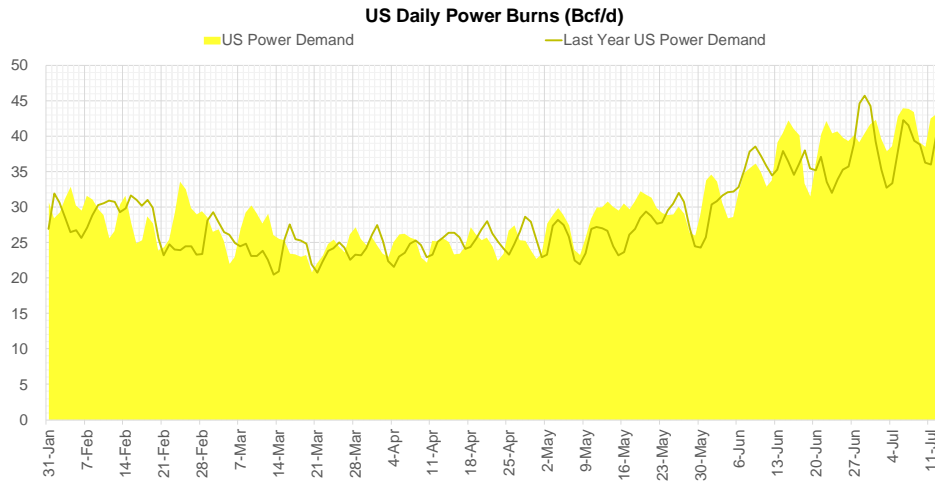
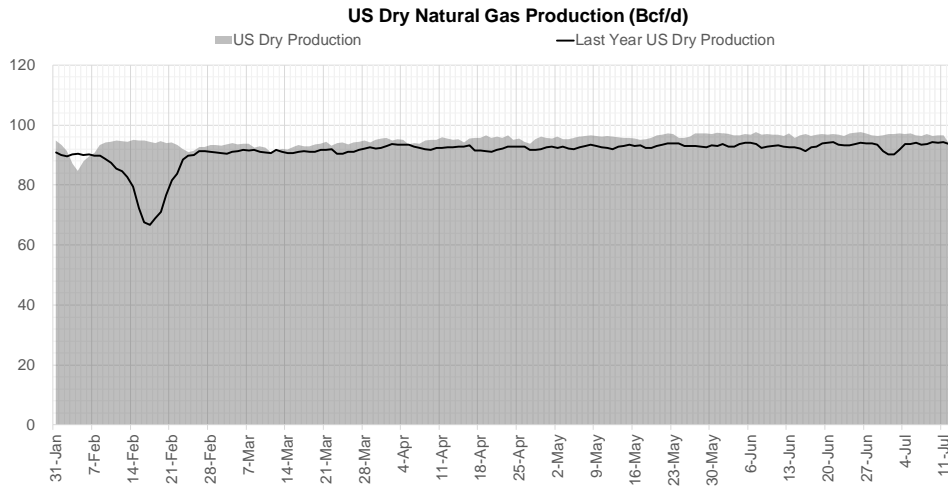
Weather Storage Model - Next 4 Week Forecast



Go to larger image



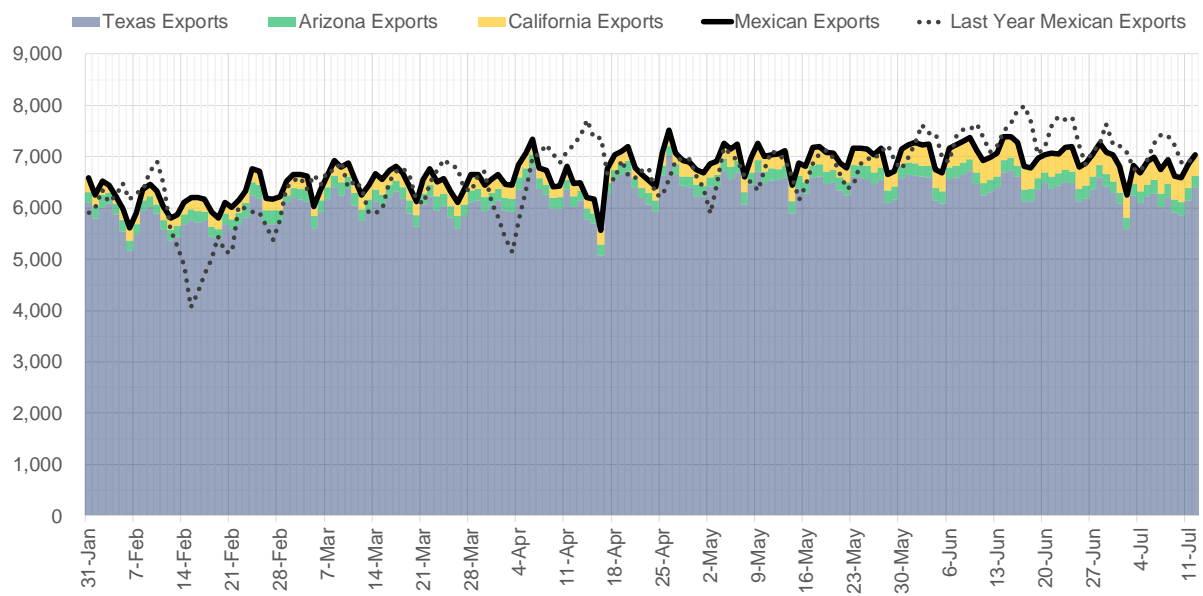
Supply – Demand Trends



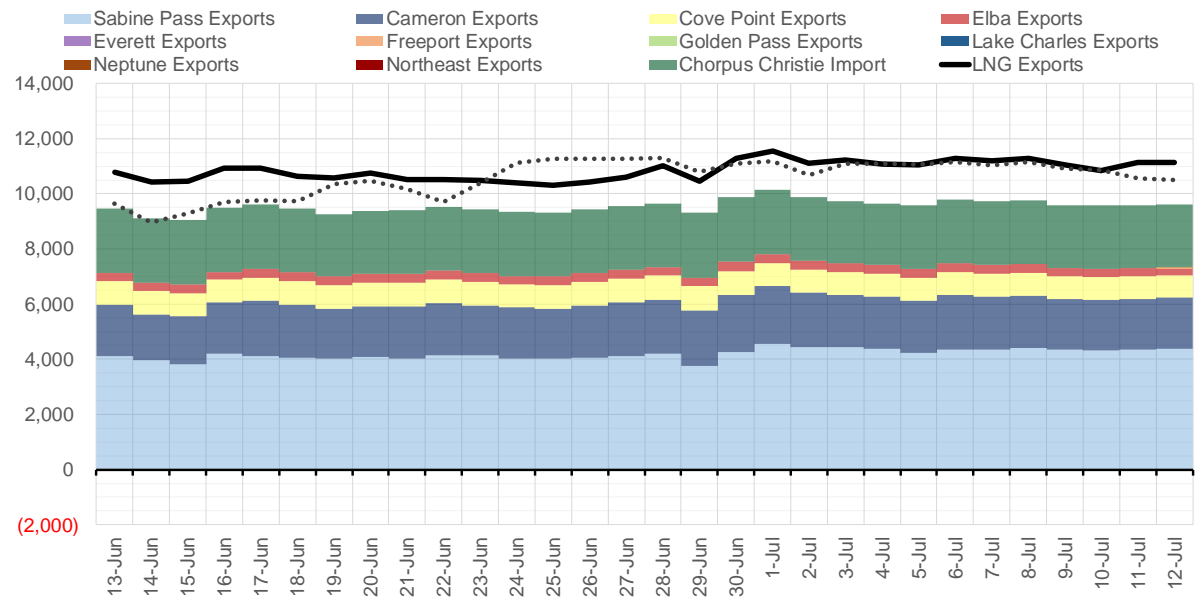
Source: Bloomberg

The risk of trading futures and options and other derivatives involves a substantial risk of loss and is not suitable for all persons. Each person must consider whether a particular trade, combination of trades, or strategy is suitable for that person's financial means and objectives. Past results are not necessarily indicative of future results. This communication may contain links to third party websites which are not under the control of and are not maintained by ION Energy Group, and ION Energy Group is not responsible for their content.

Mexican Exports (MMcf/d)



Net LNG Exports - Last 30 days (MMcf/d)



Source: Bloomberg

The risk of trading futures and options and other derivatives involves a substantial risk of loss and is not suitable for all persons. Each person must consider whether a particular trade, combination of trades, or strategy is suitable for that person's financial means and objectives. Past results are not necessarily indicative of future results. This communication may contain links to third party websites which are not under the control of and are not maintained by ION Energy Group, and ION Energy Group is not responsible for their content.

Nat Gas Options Volume and Open Interest CME and ICE Combined

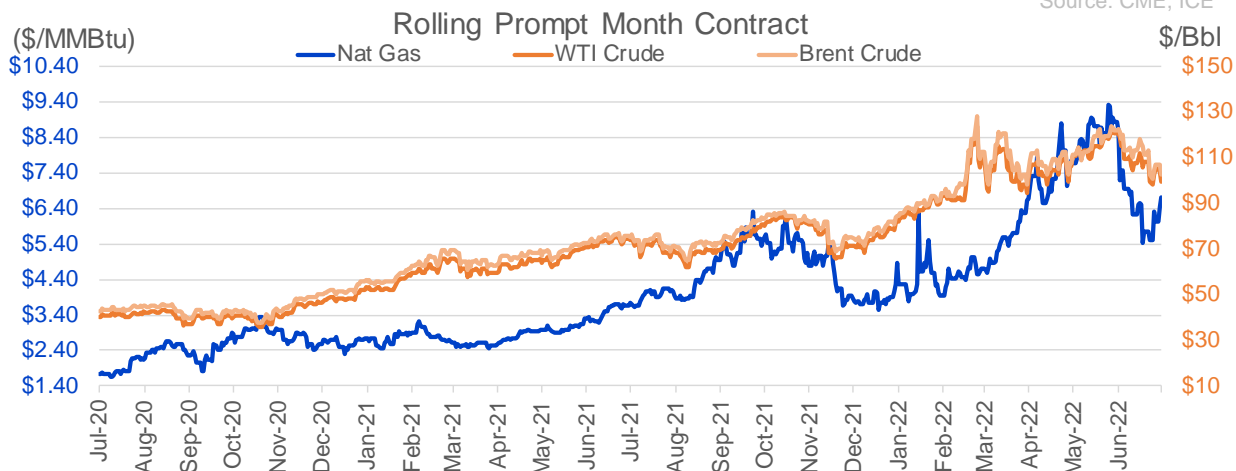
CONTRACT MONTH	CONTRACT YEAR	PUT/CALL	STRIKE	CUMULATIVE VOL	CONTRACT MONTH	CONTRACT YEAR	PUT/CALL	STRIKE	CUMULATIVE OI
8	2022	P	6.00	5516	8	2022	C	10.00	42986
10	2022	P	3.00	3968	8	2022	C	12.00	38184
8	2022	C	10.00	3868	10	2022	C	6.00	35952
9	2022	C	10.00	3039	8	2022	C	10.50	31782
9	2022	C	8.00	2665	10	2022	P	3.00	31139
10	2022	P	3.50	2397	8	2022	C	7.00	27813
8	2022	C	7.50	2254	10	2022	P	2.50	27072
10	2022	P	2.50	2002	9	2022	C	6.00	24395
9	2022	P	4.00	1909	10	2022	P	6.00	24064
9	2022	P	5.00	1825	10	2022	C	5.00	23365
8	2022	C	7.00	1500	9	2022	C	10.00	22212
8	2022	P	5.75	1333	8	2022	C	12.10	22001
8	2022	C	10.50	1311	10	2022	P	3.50	21925
8	2022	P	5.00	1301	8	2022	P	6.00	20948
9	2022	C	7.00	1180	8	2022	C	6.00	20121
9	2022	P	3.00	1159	9	2022	P	4.00	20032
11	2023	C	8.00	1110	10	2022	C	10.00	19565
12	2023	C	8.00	1110	5	2023	P	2.00	18918
10	2022	P	4.00	1098	1	2023	C	10.00	18734
8	2022	P	5.70	1081	9	2022	C	7.00	18626
10	2022	C	7.25	1050	8	2022	C	9.00	18600
10	2022	C	7.35	1000	8	2022	C	8.00	18509
11	2022	P	5.25	1000	12	2022	C	5.00	18221
11	2022	P	6.00	1000	3	2023	C	10.00	18191
11	2023	C	9.00	1000	10	2022	P	5.00	17803
12	2023	C	9.00	1000	8	2022	P	7.00	17327
10	2022	C	10.00	981	10	2022	C	8.00	16881
8	2022	C	12.00	887	8	2022	P	5.00	16825
9	2022	P	5.50	773	2	2023	C	10.00	16799
2	2023	C	8.00	760	10	2022	P	2.00	16746
12	2022	C	8.00	722	10	2022	P	4.00	16410
8	2022	P	5.50	675	3	2023	P	3.00	16238
8	2022	C	9.50	658	10	2023	P	2.00	16080
9	2022	P	3.50	657	9	2022	C	4.00	15970
10	2022	C	8.00	652	12	2022	P	5.00	15613
2	2023	C	10.00	650	9	2022	P	3.00	15413
10	2022	P	3.25	625	8	2022	P	4.00	15346
8	2022	P	6.25	612	9	2022	P	2.50	15296
9	2022	P	2.00	612	8	2022	P	3.00	15033
9	2022	C	9.00	610	10	2022	C	7.00	14959
1	2023	C	8.00	609	9	2022	P	2.75	14887
1	2023	C	7.00	608	8	2022	C	7.50	14372
9	2022	P	6.00	601	8	2022	P	5.50	14358
8	2022	C	6.50	566	9	2022	C	9.00	14230
12	2022	C	10.00	565	12	2022	C	6.00	14037
8	2022	P	4.00	555	10	2022	P	3.25	14016
8	2022	C	6.80	535	10	2023	P	2.50	13615
9	2022	P	4.50	532	9	2022	P	5.00	13545
8	2022	C	9.00	514	10	2022	C	4.00	13308
					10	2023	P	3	13255

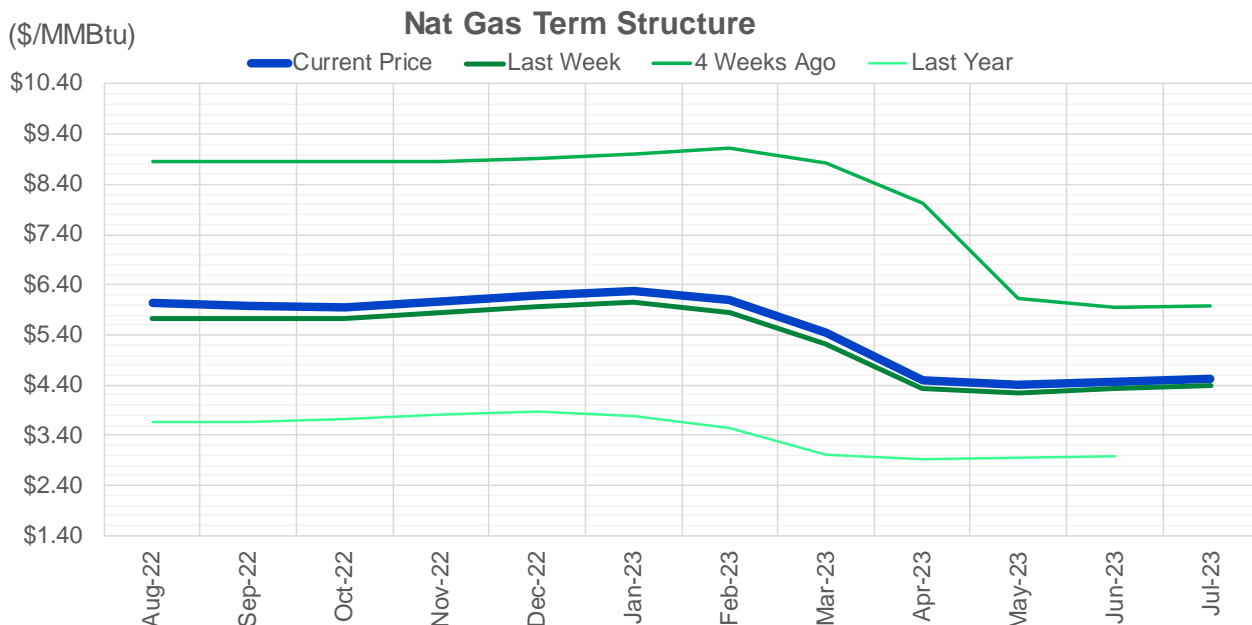
Source: CME, ICE

Nat Gas Futures Open Interest CME and ICE Combined

CME Henry Hub Futures (10,000 MMBtu)				ICE Henry Hub Futures Contract Equivalent (10,000 MM			
	Current	Prior	Daily Change		Current	Prior	Daily Change
AUG 22	76359	82855	-6496	AUG 22	81179	81079	101
SEP 22	145964	146160	-196	SEP 22	79720	80038	-319
OCT 22	90697	89132	1565	OCT 22	73948	73015	933
NOV 22	63088	60868	2220	NOV 22	61335	60824	510
DEC 22	51614	51638	-24	DEC 22	65882	65308	574
JAN 23	69404	66876	2528	JAN 23	63648	63624	24
FEB 23	31924	32349	-425	FEB 23	54084	54087	-3
MAR 23	48586	47832	754	MAR 23	50196	50060	136
APR 23	66387	66120	267	APR 23	50707	50775	-69
MAY 23	55312	55227	85	MAY 23	50477	50602	-125
JUN 23	20657	20601	56	JUN 23	44447	44355	92
JUL 23	20009	19779	230	JUL 23	43678	43562	116
AUG 23	16642	15872	770	AUG 23	42911	42865	46
SEP 23	15704	15165	539	SEP 23	41764	41707	57
OCT 23	41091	40535	556	OCT 23	48764	48772	-9
NOV 23	12292	12328	-36	NOV 23	44235	44210	25
DEC 23	11905	11874	31	DEC 23	39825	39823	2
JAN 24	18630	18223	407	JAN 24	39333	39303	31
FEB 24	7586	7607	-21	FEB 24	28570	28605	-36
MAR 24	15660	15605	55	MAR 24	33451	33437	13
APR 24	13490	13302	188	APR 24	27382	27434	-52
MAY 24	6437	6426	11	MAY 24	26587	26651	-64
JUN 24	2385	2358	27	JUN 24	23585	23648	-63
JUL 24	2126	2116	10	JUL 24	23329	23396	-67
AUG 24	3112	3128	-16	AUG 24	23675	23737	-62
SEP 24	1593	1487	106	SEP 24	23092	23155	-63
OCT 24	8116	7865	251	OCT 24	26354	26362	-8
NOV 24	4707	4697	10	NOV 24	24073	24088	-15
DEC 24	7127	7127	0	DEC 24	27135	27150	-16
JAN 25	14724	14476	248	JAN 25	19708	19728	-20

Source: CME, ICE





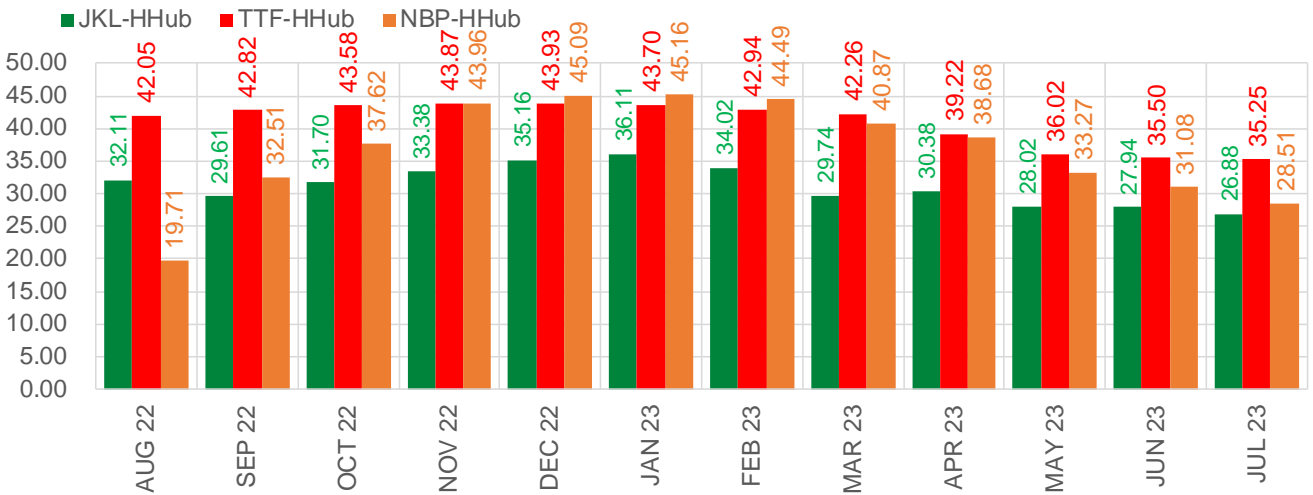
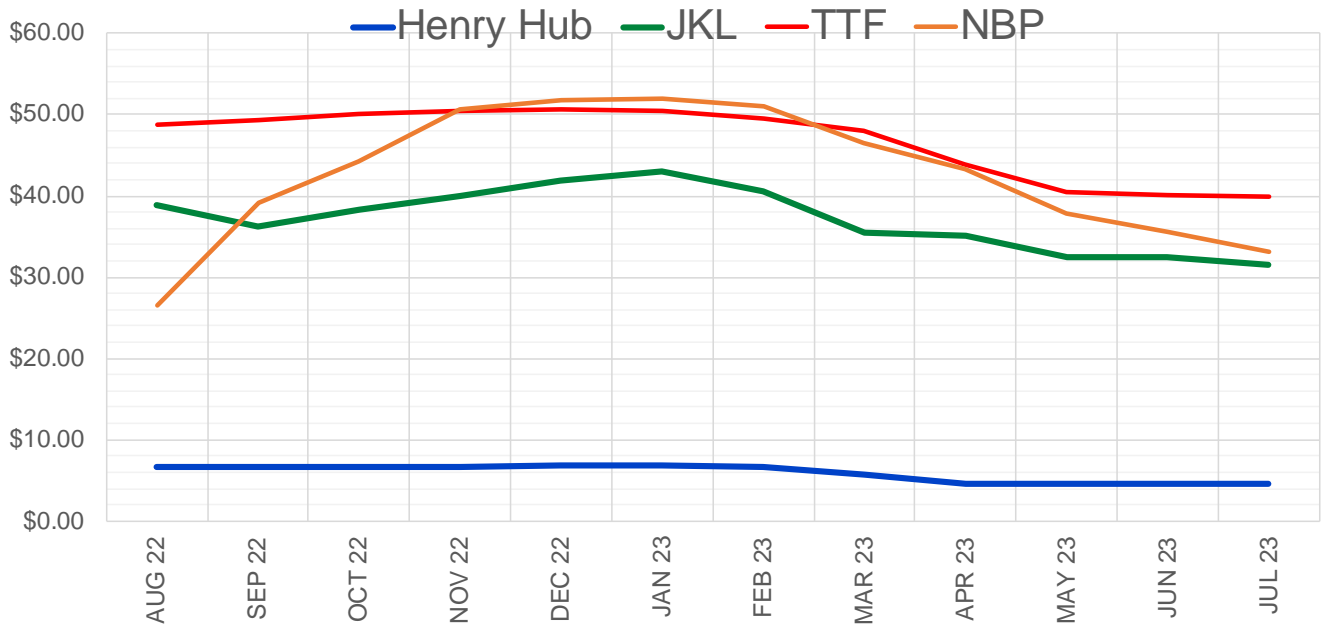
	Aug-22	Sep-22	Oct-22	Nov-22	Dec-22	Jan-23	Feb-23	Mar-23	Apr-23	May-23	Jun-23	Jul-23
Current Price	\$6.034	\$5.967	\$5.963	\$6.068	\$6.187	\$6.287	\$6.087	\$5.433	\$4.506	\$4.406	\$4.466	\$4.527
Last Week	\$5.730	\$5.712	\$5.729	\$5.837	\$5.969	\$6.066	\$5.852	\$5.215	\$4.339	\$4.257	\$4.319	\$4.381
vs. Last Week	\$0.304	\$0.255	\$0.234	\$0.231	\$0.218	\$0.221	\$0.235	\$0.218	\$0.167	\$0.149	\$0.147	\$0.146
4 Weeks Ago	\$8.850	\$8.867	\$8.847	\$8.845	\$8.915	\$9.016	\$9.111	\$8.835	\$8.019	\$6.129	\$5.934	\$5.983
vs. 4 Weeks Ago	-\$2.816	-\$2.900	-\$2.884	-\$2.777	-\$2.728	-\$2.729	-\$3.024	-\$3.402	-\$3.513	-\$1.723	-\$1.468	-\$1.456
Last Year	\$3.674	\$3.657	\$3.660	\$3.716	\$3.815	\$3.876	\$3.796	\$3.558	\$3.019	\$2.930	\$2.959	\$2.995
vs. Last Year	\$2.360	\$2.310	\$2.303	\$2.352	\$2.372	\$2.411	\$2.291	\$1.875	\$1.487	\$1.476	\$1.507	\$1.532

	Units	Cash Settled	Prompt Settle	Cash to Prompt
AGT Citygate	\$/MMBtu	6.43	5.79	-0.64
TETCO M3	\$/MMBtu	6.21	5.38	-0.83
FGT Zone 3	\$/MMBtu	6.32	7.10	0.78
Zone 6 NY	\$/MMBtu	6.32	5.30	-1.02
Chicago Citygate	\$/MMBtu	6.40	5.69	-0.71
Michcon	\$/MMBtu	6.41	5.65	-0.76
Columbia TCO Pool	\$/MMBtu	5.50	5.21	-0.29
Ventura	\$/MMBtu	5.95	5.55	-0.40
Rockies/Opal	\$/MMBtu	5.95	5.50	-0.44
El Paso Permian Basin	\$/MMBtu	6.40	5.24	-1.16
Socal Citygate	\$/MMBtu	7.46	6.78	-0.68
Malin	\$/MMBtu	5.15	5.95	0.80
Houston Ship Channel	\$/MMBtu	6.48	5.69	-0.79
Henry Hub Cash	\$/MMBtu	6.80	5.57	-1.23
AECO Cash	C\$/GJ	3.20	3.82	0.62
Station2 Cash	C\$/GJ	2.62	5.70	3.08
Dawn Cash	C\$/GJ	6.33	5.68	-0.65

Source: CME, Bloomberg

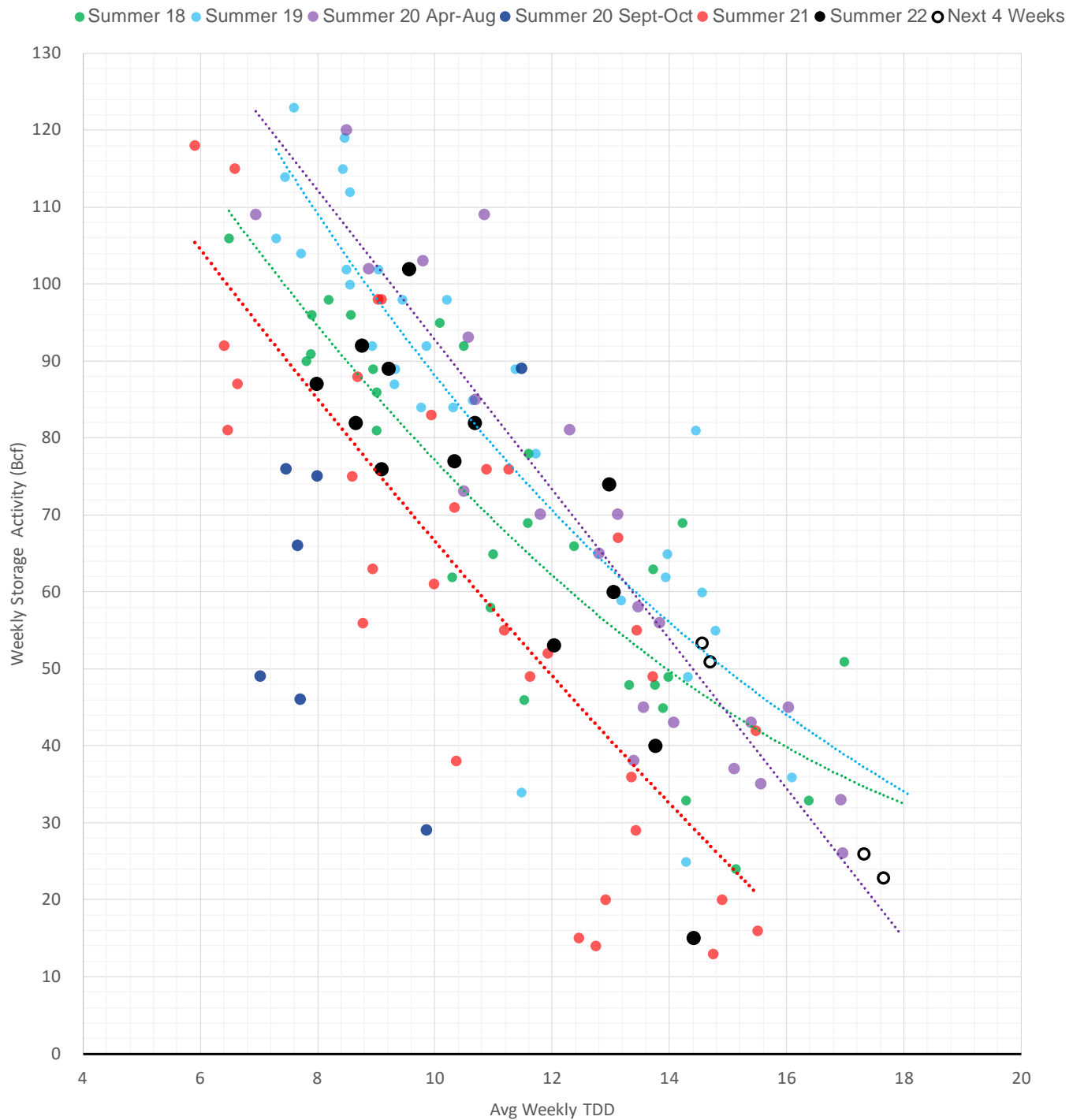
	Units	Current Price	vs. Last Week	vs. 4 Weeks Ago	vs. Last Year
NatGas Jul21/Oct21	\$/MMBtu	2.224	▲ 0.000	▲ 0.000	▲ 2.109
NatGas Oct21/Nov21	\$/MMBtu	0.361	▲ 0.000	▲ 0.000	▲ 0.303
NatGas Oct21/Jan22	\$/MMBtu	-1.817	▲ 0.000	▲ 0.000	▼ -2.035
NatGas Apr22/Oct22	\$/MMBtu	0.965	▲ 0.572	▼ -2.283	▲ 0.975
WTI Crude	\$/Bbl	104.09	▼ -4.340	▼ -16.840	▲ 29.990
Brent Crude	\$/Bbl	107.10	▼ -6.400	▼ -15.170	▲ 31.940
Fuel Oil, NY Harbour 1%	\$/Bbl	97.18	▲ 0.000	▲ 0.000	▲ 0.000
Heating Oil	cents/Gallon	376.81	▼ -17.080	▼ -51.530	▲ 161.830
Propane, Mt. Bel	cents/Gallon	1.19	▼ -0.029	▼ -0.037	▲ 0.091
Ethane, Mt. Bel	cents/Gallon	0.50	▲ 0.026	▼ -0.167	▲ 0.196
Coal, PRB	\$/MTon	12.30	▲ 0.000	▲ 0.000	▲ 0.000
Coal, PRB	\$/MMBtu	0.70			
Coal, ILB	\$/MTon	31.05	▲ 0.000	▲ 0.000	▲ 0.000
Coal, ILB	\$/MMBtu	1.32			

Nat Gas Term Structure (\$MMBTU)



	AUG 22	SEP 22	OCT 22	NOV 22	DEC 22	JAN 23	FEB 23	MAR 23	APR 23	MAY 23	JUN 23	JUL 23
Henry Hub	\$6.731	\$6.594	\$6.568	\$6.666	\$6.769	\$6.840	\$6.582	\$5.723	\$4.634	\$4.520	\$4.590	\$4.643
JKL	\$38.840	\$36.205	\$38.265	\$40.045	\$41.925	\$42.950	\$40.600	\$35.460	\$35.015	\$32.535	\$32.530	\$31.525
JKL-HHub	\$32.109	\$29.611	\$31.697	\$33.379	\$35.156	\$36.110	\$34.018	\$29.737	\$30.381	\$28.015	\$27.940	\$26.882
TTF	\$48.778	\$49.418	\$50.146	\$50.531	\$50.694	\$50.543	\$49.523	\$47.985	\$43.850	\$40.538	\$40.090	\$39.889
TTF-HHub	\$42.047	\$42.824	\$43.578	\$43.865	\$43.925	\$43.703	\$42.941	\$42.262	\$39.216	\$36.018	\$35.500	\$35.246
NBP	\$26.439	\$39.102	\$44.185	\$50.622	\$51.857	\$51.996	\$51.072	\$46.590	\$43.311	\$37.792	\$35.666	\$33.151
NBP-HHub	\$19.708	\$32.508	\$37.617	\$43.956	\$45.088	\$45.156	\$44.490	\$40.867	\$38.677	\$33.272	\$31.076	\$28.508

Weather Storage Model - Next 4 Week Forecast



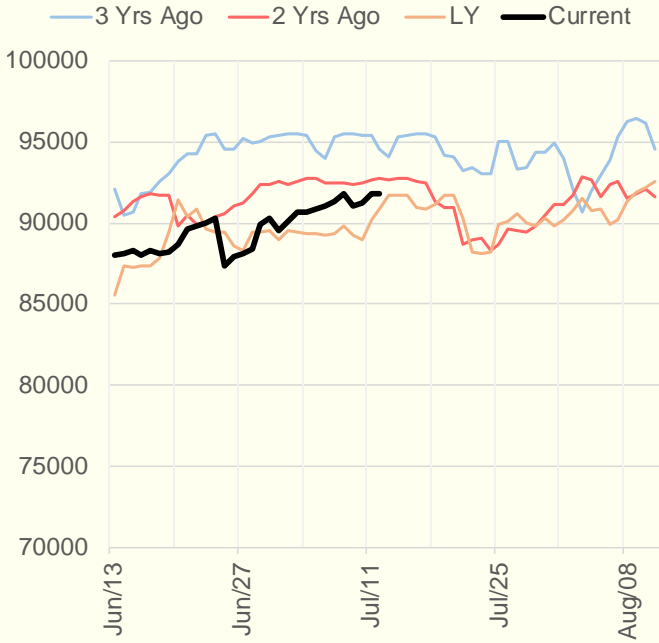
The risk of trading futures and options and other derivatives involves a substantial risk of loss and is not suitable for all persons. Each person must consider whether a particular trade, combination of trades, or strategy is suitable for that person's financial means and objectives. Past results are not necessarily indicative of future results. This communication may contain links to third party websites which are not under the control of and are not maintained by ION Energy Group, and ION Energy Group is not responsible for their content.

Weather Storage Model - Next 4 Week Forecast

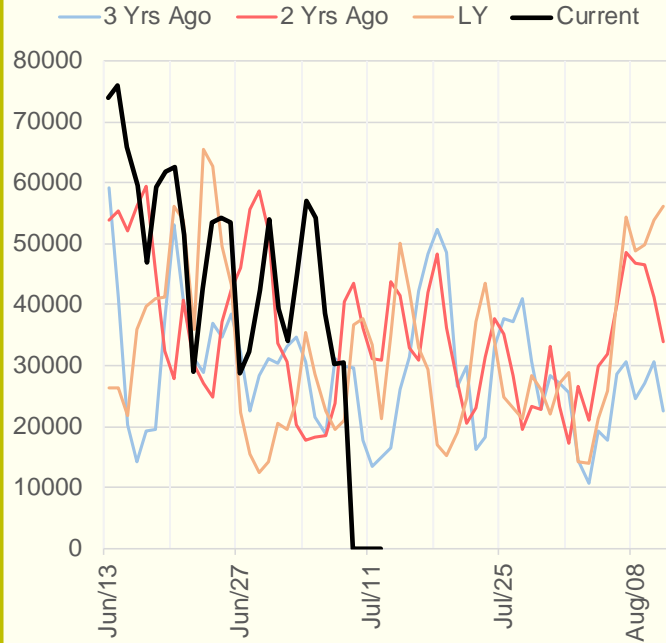


The risk of trading futures and options and other derivatives involves a substantial risk of loss and is not suitable for all persons. Each person must consider whether a particular trade, combination of trades, or strategy is suitable for that person's financial means and objectives. Past results are not necessarily indicative of future results. This communication may contain links to third party websites which are not under the control of and are not maintained by ION Energy Group, and ION Energy Group is not responsible for their content.

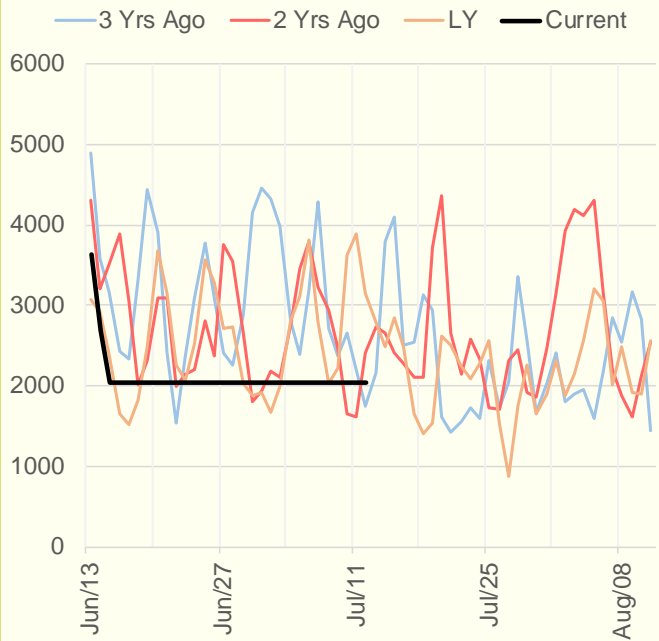
NRC Nuclear Daily Output



Genscape Wind



CALI Wind



TEXAS Wind

