

	Current	Δ from YD	Δ from 7D Avg
Nat Gas Prompt	\$ 6.80	▲ \$ 0.11	▲ \$ 0.56

	Current	Δ from YD	Δ from 7D Avg
WTI Prompt	\$ 93.98	▼ \$ (2.32)	▼ \$ (7.9)

	Current	Δ from YD	Δ from 7D Avg
Brent Prompt	\$ 97.43	▼ \$ (2.14)	▼ \$ (7.1)

### Page Menu

[Short-term Weather Model Outlooks](#)

[Lower 48 Component Models](#)

[Regional S/D Models Storage Projection](#)

[Weather Model Storage Projection](#)

[Supply – Demand Trends](#)

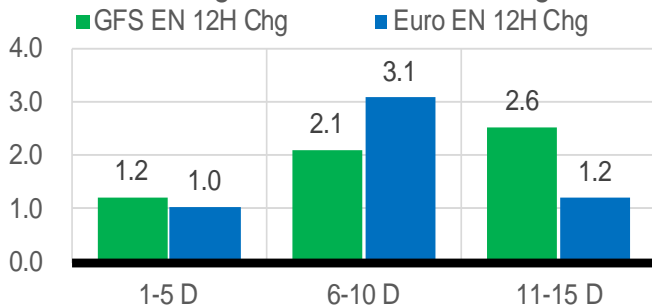
[Nat Gas Options Volume and Open Interest](#)

[Nat Gas Futures Open Interest](#)

[Price Summary](#)

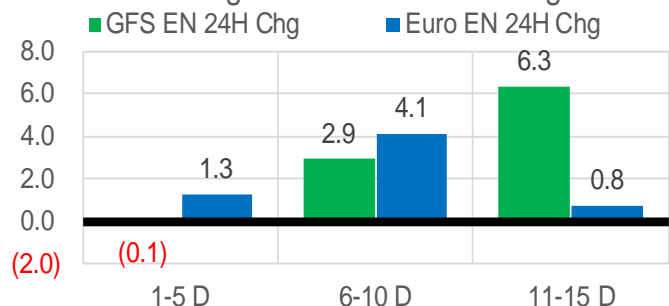
### Vs. 12H Ago

L48 Region - 00z TDD vs 12H Ago



### Vs. 24H Ago

L48 Region - 00z TDD vs 24H Ago



	Current	Δ from YD	Δ from 7D Avg
US Dry Production	95.2	▼ -0.34	▼ -1.08

	Current	Δ from YD	Δ from 7D Avg
US Power Burns	42.4	▼ -2.02	▼ -0.20

	Current	Δ from YD	Δ from 7D Avg
US ResComm	8.6	▼ -0.05	▲ 0.26

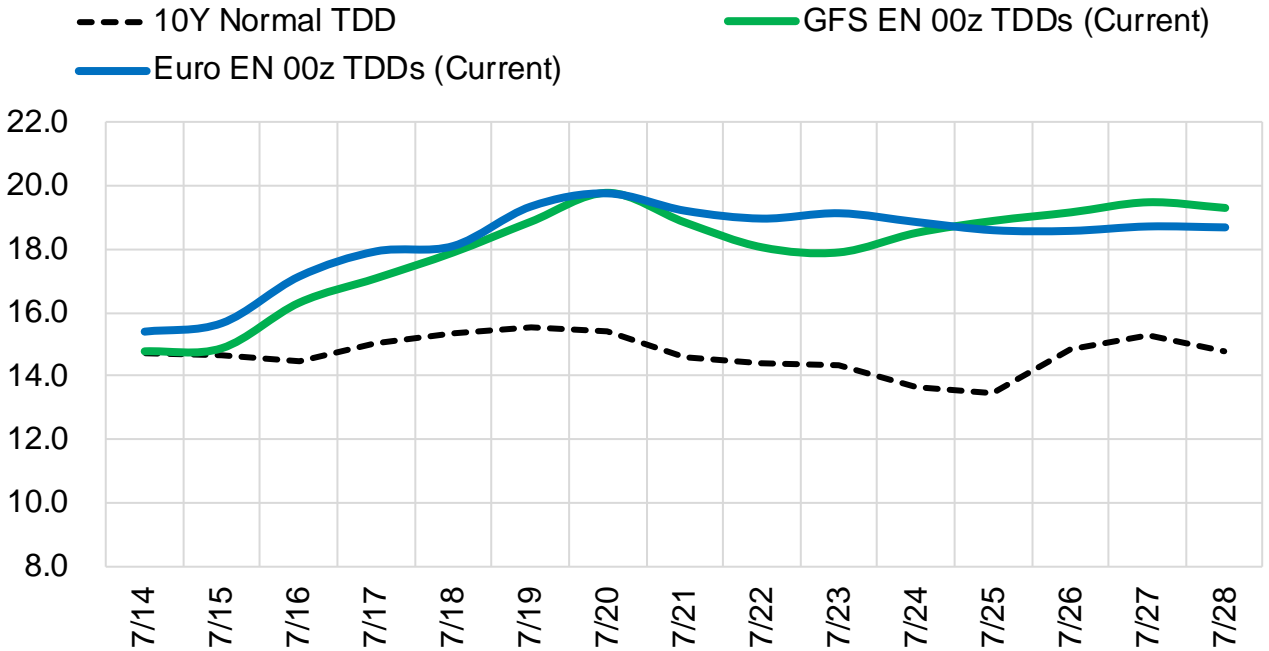
	Current	Δ from YD	Δ from 7D Avg
Canadian Imports	6.6	▲ 0.21	▲ 0.63

	Current	Δ from YD	Δ from 7D Avg
Net LNG Exports	11.4	▲ 0.07	▲ 0.28

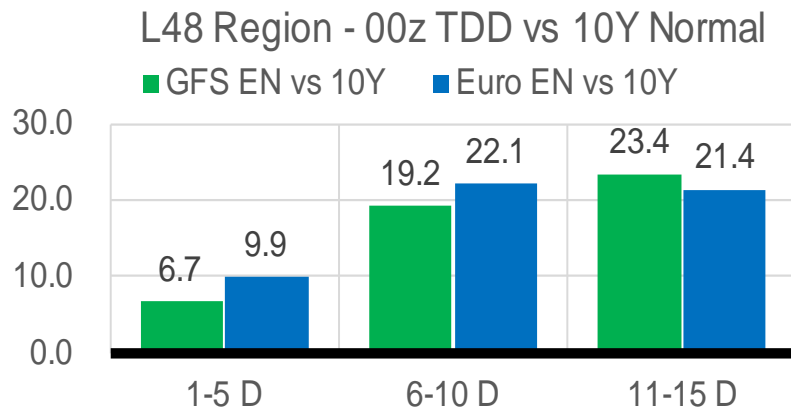
	Current	Δ from YD	Δ from 7D Avg
Mexican Exports	7.2	▼ -0.29	▲ 0.28

## Short-term Weather Model Outlooks (00z)

### L48 Region



## Vs. 10Y Normal



Source: WSI , Bloomberg

### Lower 48 Component Models

#### Daily Balances

	8-Jul	9-Jul	10-Jul	11-Jul	12-Jul	13-Jul	14-Jul	DoD	vs. 7D
<b>Lower 48 Dry Production</b>	<b>97.0</b>	<b>96.4</b>	<b>96.6</b>	<b>96.5</b>	<b>95.3</b>	<b>95.5</b>	<b>95.2</b>	▼ -0.3	▼ -1.1
<b>Canadian Imports</b>	<b>6.0</b>	<b>5.5</b>	<b>5.6</b>	<b>5.8</b>	<b>6.3</b>	<b>6.4</b>	<b>6.6</b>	▲ 0.2	▲ 0.6
L48 Power	43.4	39.4	38.7	43.4	45.2	44.4	42.4	▼ -2.0	▲ 0.0
L48 Residential & Commercial	8.3	8.0	8.0	8.4	8.6	8.7	8.6	▼ 0.0	▲ 0.3
L48 Industrial	19.9	19.9	19.8	19.9	19.9	20.2	20.4	▲ 0.3	▲ 0.5
L48 Lease and Plant Fuel	5.3	5.2	5.2	5.2	5.2	5.2	5.1	▼ -0.1	▼ -0.1
L48 Pipeline Distribution	2.8	2.5	2.5	2.8	2.9	2.8	2.7	▼ -0.1	▲ 0.0
<b>L48 Regional Gas Consumption</b>	<b>79.7</b>	<b>75.0</b>	<b>74.2</b>	<b>79.7</b>	<b>81.7</b>	<b>81.3</b>	<b>79.3</b>	▼ -2.0	▲ 0.7
<b>Net LNG Delivered</b>	<b>11.27</b>	<b>11.06</b>	<b>10.85</b>	<b>11.00</b>	<b>11.01</b>	<b>11.30</b>	<b>11.37</b>	▲ 0.1	▲ 0.3
<b>Total Mexican Exports</b>	<b>6.9</b>	<b>6.6</b>	<b>6.6</b>	<b>6.9</b>	<b>7.2</b>	<b>7.5</b>	<b>7.2</b>	▼ -0.3	▲ 0.3
<b>Implied Daily Storage Activity</b>	<b>5.1</b>	<b>9.3</b>	<b>10.5</b>	<b>4.8</b>	<b>1.7</b>	<b>1.8</b>	<b>3.9</b>		
<b>EIA Reported Daily Storage Activity</b>									
<b>Daily Model Error</b>									

#### EIA Storage Week Balances

	3-Jun	10-Jun	17-Jun	24-Jun	1-Jul	8-Jul	WoW	vs. 4W
<b>Lower 48 Dry Production</b>	<b>97.2</b>	<b>96.9</b>	<b>96.7</b>	<b>96.7</b>	<b>97.0</b>	<b>97.0</b>	▼ -0.1	▲ 0.1
<b>Canadian Imports</b>	<b>4.8</b>	<b>5.5</b>	<b>6.1</b>	<b>5.6</b>	<b>5.7</b>	<b>5.6</b>	▼ -0.1	▼ -0.1
L48 Power	30.3	32.3	37.8	37.7	40.2	41.3	▲ 1.1	▲ 4.3
L48 Residential & Commercial	9.1	8.6	8.3	8.7	8.2	8.3	▲ 0.1	▼ -0.2
L48 Industrial	21.4	21.3	21.5	20.1	21.0	20.2	▼ -0.8	▼ -0.8
L48 Lease and Plant Fuel	5.2	5.2	5.2	5.2	5.3	5.3	▲ 0.0	▲ 0.0
L48 Pipeline Distribution	2.2	2.2	2.5	2.5	2.6	2.6	▲ 0.0	▲ 0.2
<b>L48 Regional Gas Consumption</b>	<b>68.3</b>	<b>69.7</b>	<b>75.3</b>	<b>74.2</b>	<b>77.3</b>	<b>77.7</b>	▲ 0.4	▲ 3.5
<b>Net LNG Exports</b>	<b>12.8</b>	<b>12.3</b>	<b>10.7</b>	<b>10.6</b>	<b>10.6</b>	<b>11.2</b>	▲ 0.6	▲ 0.1
<b>Total Mexican Exports</b>	<b>7.1</b>	<b>7.1</b>	<b>7.2</b>	<b>7.0</b>	<b>7.0</b>	<b>6.8</b>	▼ -0.3	▼ -0.3
<b>Implied Daily Storage Activity</b>	<b>13.9</b>	<b>13.2</b>	<b>9.6</b>	<b>10.5</b>	<b>7.8</b>	<b>7.0</b>	-0.8	
<b>EIA Reported Daily Storage Activity</b>	<b>14.6</b>	<b>13.1</b>	<b>10.6</b>	<b>11.7</b>	<b>8.6</b>			
<b>Daily Model Error</b>	<b>-0.6</b>	<b>0.1</b>	<b>-1.0</b>	<b>-1.2</b>	<b>-0.8</b>			

#### Monthly Balances

	2Yr Ago Jul-20	LY Jul-21	Mar-22	Apr-22	May-22	Jun-22	MTD Jul-22	MoM	vs. LY
<b>Lower 48 Dry Production</b>	<b>89.0</b>	<b>93.5</b>	<b>93.4</b>	<b>95.2</b>	<b>96.2</b>	<b>96.8</b>	<b>96.6</b>	▼ -0.2	▲ 3.1
<b>Canadian Imports</b>	<b>4.4</b>	<b>5.2</b>	<b>5.2</b>	<b>5.8</b>	<b>5.1</b>	<b>5.7</b>	<b>5.8</b>	▲ 0.1	▲ 0.6
L48 Power	43.8	39.7	25.4	24.7	28.8	36.8	41.8	▲ 5.0	▲ 2.1
L48 Residential & Commercial	7.9	8.1	31.5	22.5	12.3	8.5	8.3	▼ -0.2	▲ 0.2
L48 Industrial	20.1	20.8	19.7	21.5	21.1	20.8	20.1	▼ -0.7	▼ -0.7
L48 Lease and Plant Fuel	4.9	5.1	5.2	5.2	5.2	5.2	5.2	▲ 0.0	▲ 0.2
L48 Pipeline Distribution	2.6	2.5	2.9	2.6	2.3	2.5	2.7	▲ 0.2	▲ 0.1
<b>L48 Regional Gas Consumption</b>	<b>79.3</b>	<b>76.2</b>	<b>84.7</b>	<b>76.6</b>	<b>69.8</b>	<b>73.8</b>	<b>78.1</b>	▲ 4.3	▲ 1.9
<b>Net LNG Exports</b>	<b>3.3</b>	<b>10.8</b>	<b>12.9</b>	<b>12.3</b>	<b>12.5</b>	<b>11.2</b>	<b>11.1</b>	▼ 0.0	▲ 0.3
<b>Total Mexican Exports</b>	<b>5.9</b>	<b>7.1</b>	<b>6.5</b>	<b>6.7</b>	<b>7.0</b>	<b>7.1</b>	<b>6.8</b>	▼ -0.2	▼ -0.2
<b>Implied Daily Storage Activity</b>	<b>4.9</b>	<b>4.6</b>	<b>-5.4</b>	<b>5.4</b>	<b>12.0</b>	<b>10.5</b>	<b>6.3</b>		
<b>EIA Reported Daily Storage Activity</b>									
<b>Daily Model Error</b>									

Source: Bloomberg, analytix.ai

## Daily Average Generation Data

### Nuclear Generation Daily Average - GWh (NRC)

	6-Jul	7-Jul	8-Jul	9-Jul	10-Jul	11-Jul	12-Jul	DoD	vs. 7D
NRC Nuclear Daily Output	91.1	91.4	91.8	91.0	91.3	91.8	91.6	-0.2	0.2
NRC Nuclear Max Capacity	104.9	104.9	104.9	104.9	104.9	104.9	104.9	0.0	0.0
NRC Nuclear Outage	13.8	13.5	13.1	13.8	13.6	13.1	13.3	0.2	-0.2
NRC % Nuclear Cap Utilization	92.6	92.9	93.4	92.6	92.8	93.4	93.2	-0.2	0.2

### Wind Generation Daily Average - MWh (EIA)

	6-Jul	7-Jul	8-Jul	9-Jul	10-Jul	11-Jul	12-Jul	DoD	vs. 7D
CALI Wind	2048	2048	2048	2048	2048	2048	2048	0	0
TEXAS Wind	22879	22879	22879	22879	22879	22879	22879	0	0
US Wind	63443	63443	63443	63443	63443	63443	63443	0	0

EIA 930 data is not being updated. EIA experiencing some issues.

### Generation Daily Average - MWh (EIA)

	6-Jul	7-Jul	8-Jul	9-Jul	10-Jul	11-Jul	12-Jul	DoD	vs. 7D
Genscape Wind	38704	30219	30526	28862	35417	42460	42460	0	8095
US Solar	19728	19728	19728	19728	19728	19728	19728	0	0
US Petroleum	1333	1333	1333	1333	1333	1333	1333	0	0
US Other	9775	9775	9775	9775	9775	9775	9775	0	0
US Coal	119543	119543	119543	119543	119543	119543	119543	0	0
US Nuke	90696	90696	90696	90696	90696	90696	90696	0	0
US Hydro	39690	39690	39690	39690	39690	39690	39690	0	0
<b>US Gas</b>	<b>220700</b>	<b>220700</b>	<b>220700</b>	<b>220700</b>	<b>220700</b>	<b>220700</b>	<b>220700</b>	<b>0</b>	<b>0</b>

See National Wind and Nuclear daily charts

Source: Bloomberg, analytix.ai

## Storage Week Average Generation Data

### Nuclear Generation Weekly Average - GWh (NRC)

	3-Jun	10-Jun	17-Jun	24-Jun	1-Jul	8-Jul	WoW	WoW Bcf/d Impact
NRC Nuclear Daily Output	86.2	88.3	88.2	89.0	88.9	90.6	1.7	-0.3
NRC Nuclear Max Capacity	104.9	104.9	104.9	104.9	104.9	104.9	0.0	
NRC Nuclear Outage	18.7	16.6	16.7	15.9	16.0	14.2	-1.7	
NRC % Nuclear Cap Utilization	87.6	89.8	89.7	90.5	90.4	92.2	1.8	

### Wind Generation Weekly Average - MWh (EIA)

	3-Jun	10-Jun	17-Jun	24-Jun	1-Jul	8-Jul	WoW	WoW Bcf/d Impact
CALI Wind	3268	3842	3032	2048	2048	2048	0	0.0
TEXAS Wind	17915	12449	20462	22879	22879	22879	0	0.0
US Wind	57939	37417	57090	63443	63443	63443	0	0.0
							0%	

### Generation Weekly Average - MWh (EIA)

	3-Jun	10-Jun	17-Jun	24-Jun	1-Jul	8-Jul	WoW	WoW Bcf/d Impact
Genscape Wind	59474	38198	57792	50581	45558	42730	-2828	0.5
US Solar	18656	18807	18731	19728	19728	19728	0	0.0
US Petroleum	863	968	1244	1333	1333	1333	0	0.0
US Other	7866	8001	8688	9775	9775	9775	0	0.0
US Coal	89706	95415	106566	119543	119543	119543	0	0.0
US Nuke	89728	91641	91235	90696	90696	90696	0	0.0
US Hydro	35051	36328	37495	39690	39690	39690	0	0.0
<b>US Gas</b>	<b>163383</b>	<b>178204</b>	<b>201845</b>	<b>220700</b>	<b>220700</b>	<b>220700</b>	<b>0</b>	<b>0.0</b>

EIA 930 data is not being updated. EIA experiencing some issues.

See National Wind and Nuclear daily charts

Source: Bloomberg, analytix.ai

## Monthly Average Generation Data

### Nuclear Generation Monthly Average - GWh (NRC)

	2Yr Ago	LY	MTD						
	Same 30 days	Same 30 days	Apr-22	May-22	Jun-22	Jul-22	Last 30 days	MoM (MTD vs LY)	Last 30 days YoY
	NRC Nuclear Daily Output	91.8	89.5	73.4	81.7	88.5	90.9	89.8	2.3
NRC Nuclear Max Capacity	104.9	104.9	104.9	104.9	104.9	104.9	104.9	0.0	0.0
NRC Nuclear Outage	13.0	15.4	31.5	23.2	16.3	12.8	14.5	-3.5	-0.9
NRC % Nuclear Cap Utilization	93.4	91.0	74.6	83.0	90.0	92.4	91.3	2.4	0.3

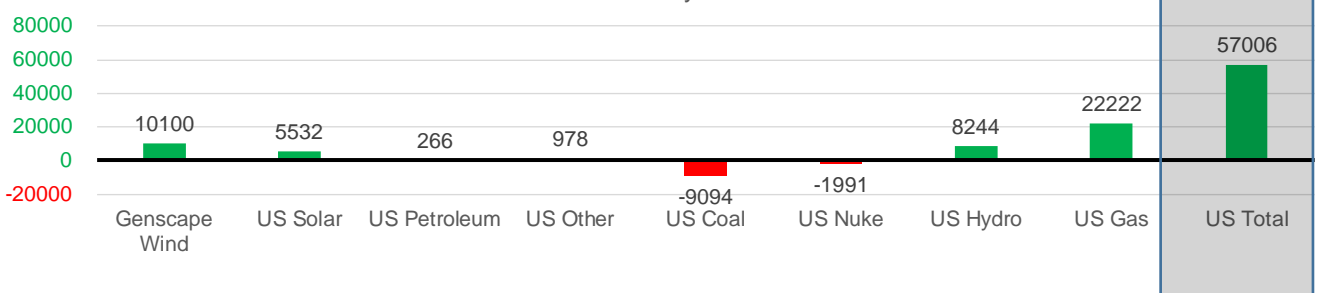
### Wind Generation Monthly Average - MWh (EIA)

	2Yr Ago	LY	MTD						
	Same 30 days	Same 30 days	Apr-22	May-22	Jun-22	Jul-22	Last 30 days	MoM (MTD vs LY)	Last 30 days YoY
	CALI Wind	2676	2602	3218	3361	2724	2048	2048	-676
TEXAS Wind	11862	8520	16384	16756	19072	22879	22879	3807	14360
US Wind	36079	34411	64240	56462	54014	63443	63443	9428	29031

### Generation Monthly Average - MWh (EIA)

	2Yr Ago	LY	MTD						
	Same 30 days	Same 30 days	Apr-22	May-22	Jun-22	Jul-22	Last 30 days	MoM (MTD vs LY)	Last 30 days YoY
	Genscape Wind	37294	33895	63684	56803	47280	37235	43995	▲ 6759.5
US Solar	12314	14196	16265	18186	19216	19728	19728	▲ 0.0	▲ 5532
US Petroleum	1288	1067	979	518	1204	1333	1333	▲ 0	▲ 266
US Other	9408	8798	7373	7724	8994	9775	9775	▲ 0	▲ 978
US Coal	104727	128637	77400	85273	109706	119543	119543	▲ 0	▼ -9094
US Nuke	94892	92686	77317	85496	91073	90696	90696	▲ 0	▼ -1991
US Hydro	35566	31446	28877	31369	38153	39690	39690	▲ 0	▲ 8244
<b>US Gas</b>	<b>209225</b>	<b>198477</b>	<b>132665</b>	<b>157565</b>	<b>204668</b>	<b>220700</b>	<b>220700</b>	<b>▲ 6759</b>	<b>▲ 22222</b>
<b>US Total</b>	<b>501856</b>	<b>509963</b>	<b>405650</b>	<b>443965</b>	<b>530484</b>	<b>566968</b>	<b>566968</b>	<b>▲ 6759</b>	<b>▲ 57006</b>

Last 30 days YoY



See National Wind and Nuclear daily charts

Source: Bloomberg, analytix.ai

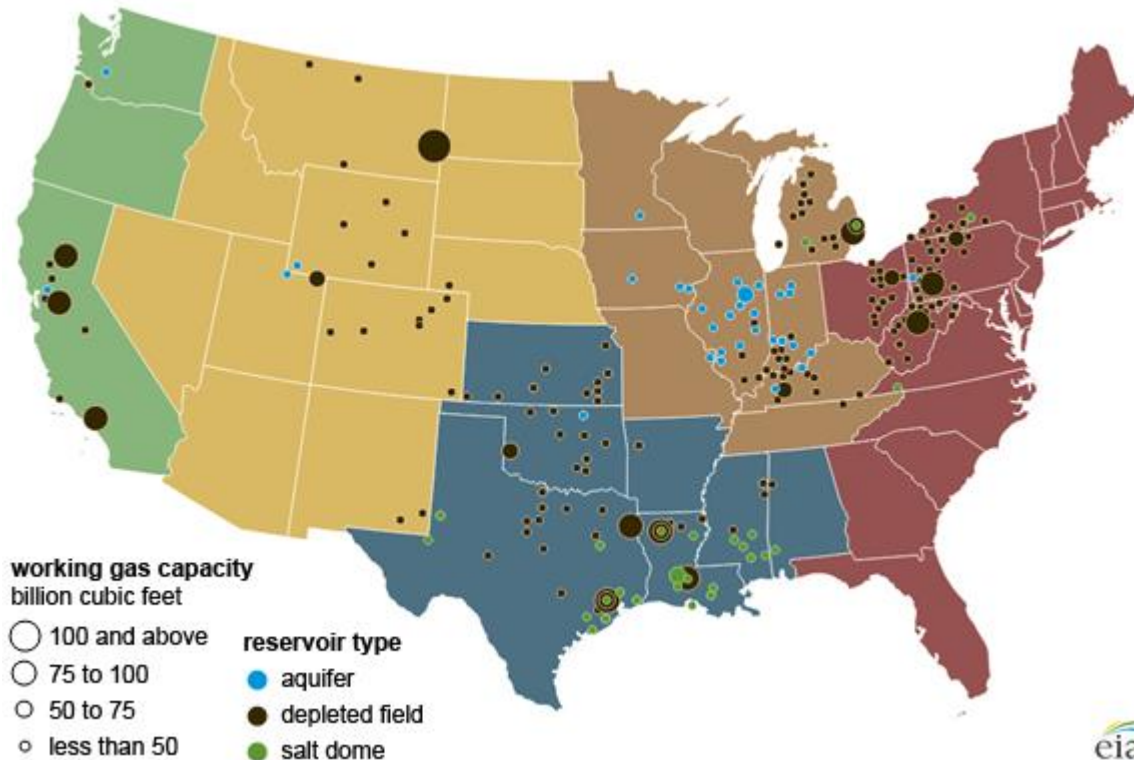
### Regional S/D Models Storage Projection

Week Ending 8-Jul

	Daily Raw Storage	Daily Adjustment Factor	Daily Average Storage Activity (Adjusted) *	Weekly Adjusted Storage Activity
L48	8.1	-0.5	7.6	53
East	0.7	1.8	2.6	18
Midwest	3.6	-1.2	2.5	17
Mountain	4.7	-4.0	0.7	5
South Central	-3.2	3.6	0.4	3
Pacific	2.2	-0.8	1.4	10

\*Adjustment Factor is calculated based on historical regional deltas

U.S. underground natural gas storage facilities by type (July 2015)

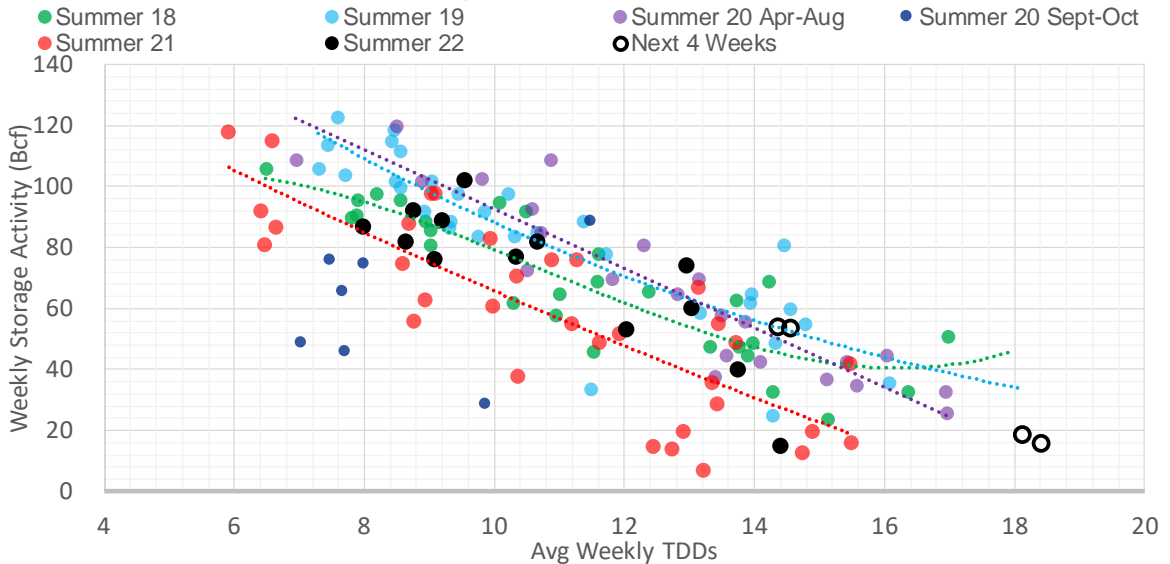


## Weather Model Storage Projection

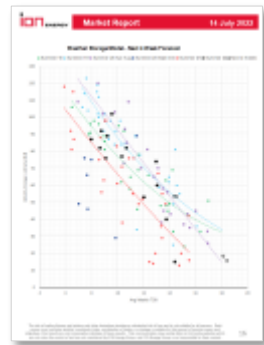
Next report and beyond

Week Ending	GWDDs	Week Storage Projection
08-Jul	14.6	53
15-Jul	14.4	54
22-Jul	18.2	18
29-Jul	18.4	16

### Weather Storage Model - Next 4 Week Forecast

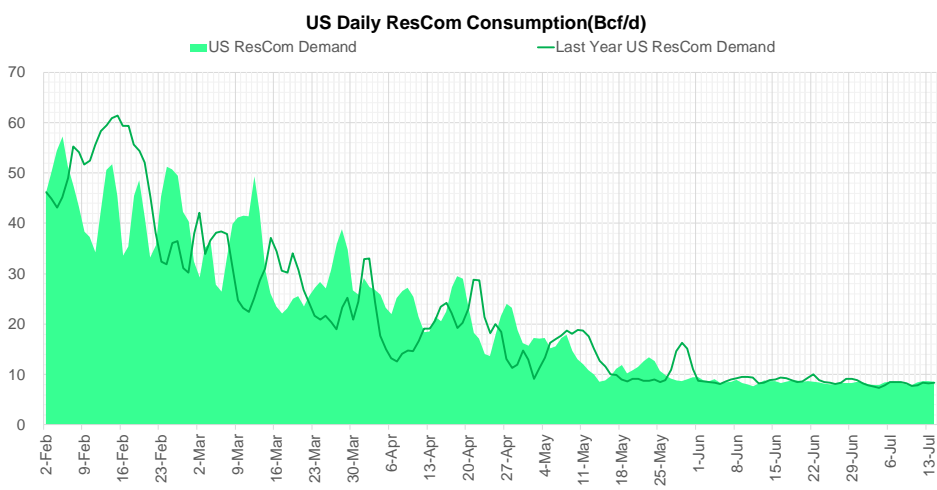
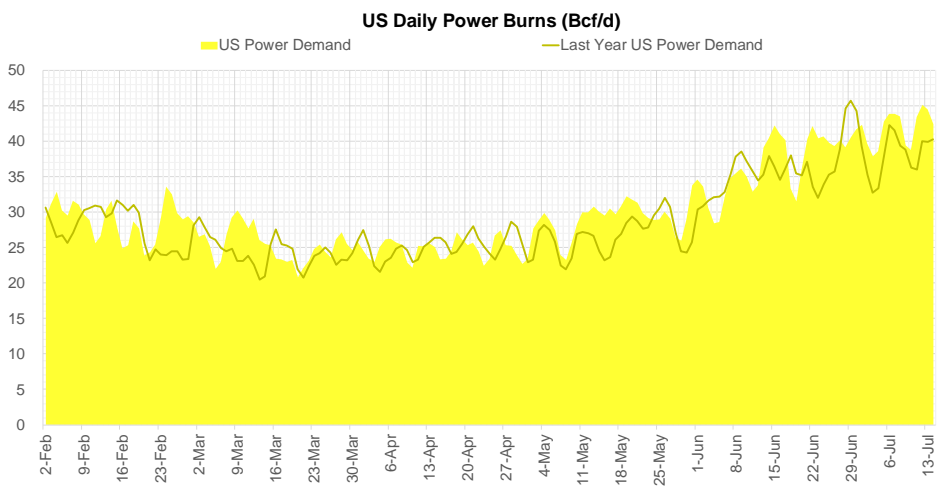
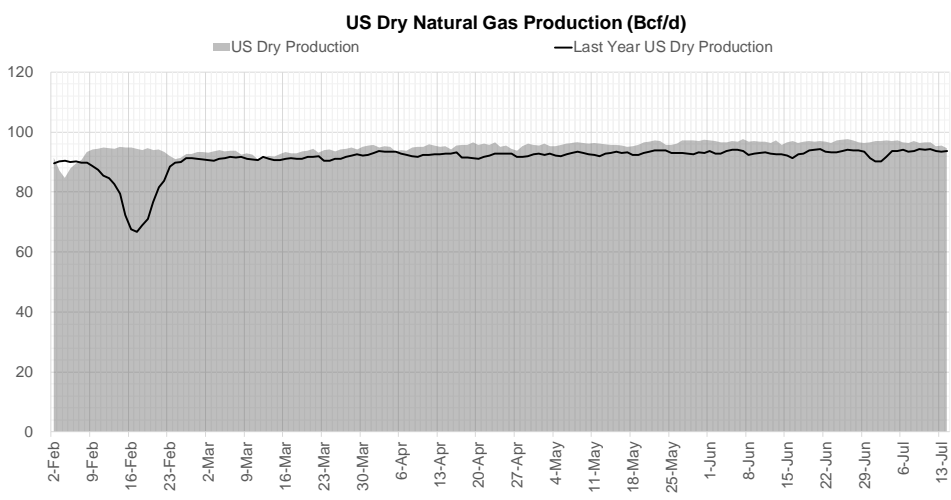


Go to larger image





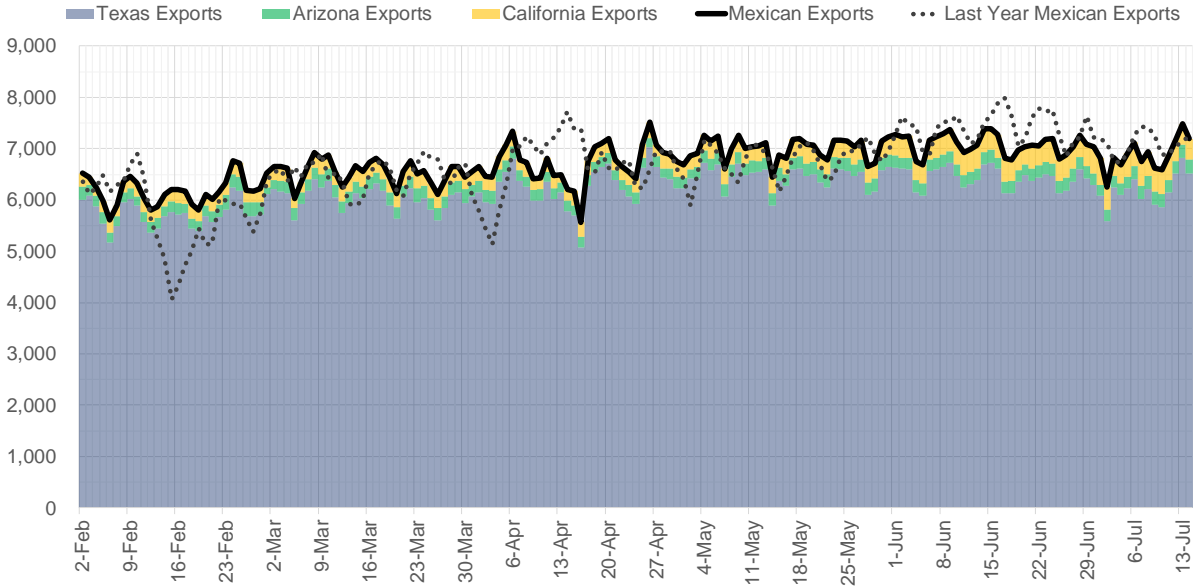
## Supply – Demand Trends



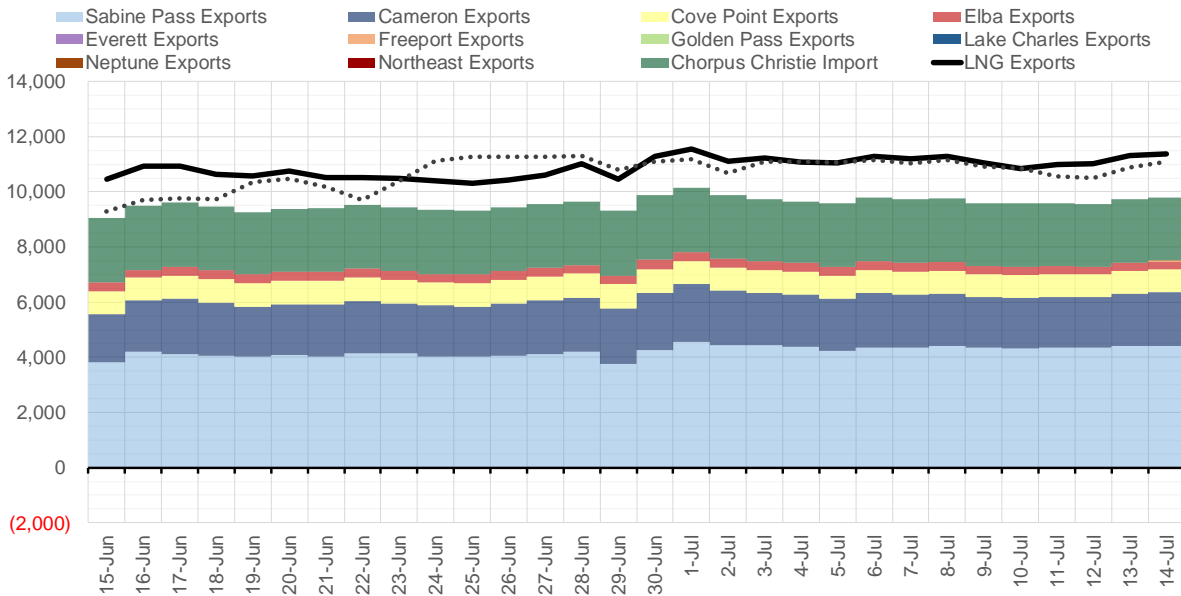
Source: Bloomberg

The risk of trading futures and options and other derivatives involves a substantial risk of loss and is not suitable for all persons. Each person must consider whether a particular trade, combination of trades, or strategy is suitable for that person's financial means and objectives. Past results are not necessarily indicative of future results. This communication may contain links to third party websites which are not under the control of and are not maintained by ION Energy Group, and ION Energy Group is not responsible for their content.

### Mexican Exports (MMcf/d)



### Net LNG Exports - Last 30 days (MMcf/d)



Source: Bloomberg

The risk of trading futures and options and other derivatives involves a substantial risk of loss and is not suitable for all persons. Each person must consider whether a particular trade, combination of trades, or strategy is suitable for that person's financial means and objectives. Past results are not necessarily indicative of future results. This communication may contain links to third party websites which are not under the control of and are not maintained by ION Energy Group, and ION Energy Group is not responsible for their content.

## Nat Gas Options Volume and Open Interest CME and ICE Combined

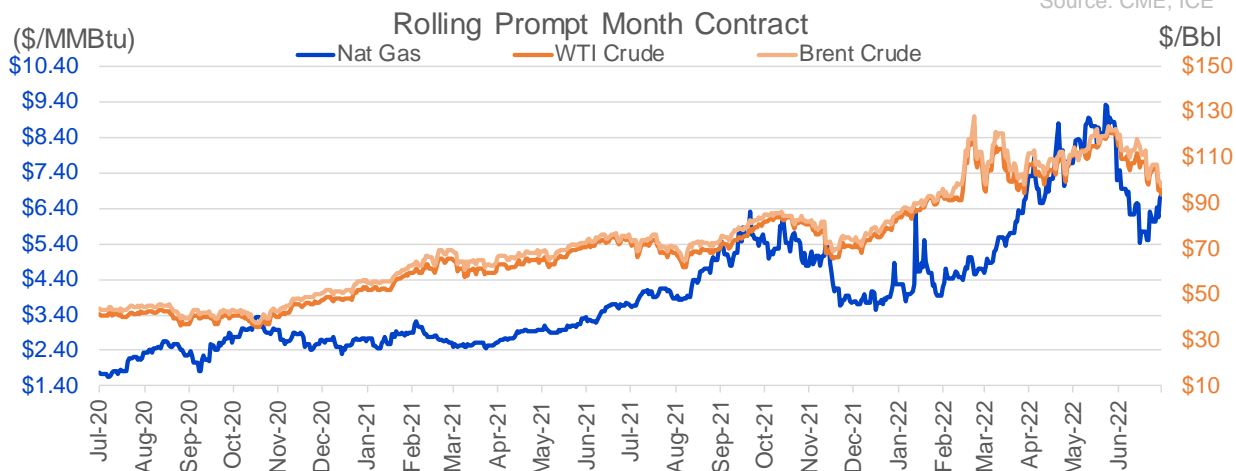
CONTRACT MONTH	CONTRACT YEAR	PUT/CALL	STRIKE	CUMULATIVE VOL	CONTRACT MONTH	CONTRACT YEAR	PUT/CALL	STRIKE	CUMULATIVE OI
5	2023	P	2.00	10000	8	2022	C	10.00	43089
8	2022	C	8.00	6219	8	2022	C	12.00	37984
8	2022	C	10.00	5180	10	2022	C	6.00	35979
8	2022	C	7.00	4796	8	2022	C	7.00	32015
10	2022	C	9.00	4688	8	2022	C	10.50	31608
8	2022	C	9.00	4422	10	2022	P	3.00	30972
9	2022	C	10.00	3137	10	2022	P	2.50	27961
8	2022	P	6.00	3114	9	2022	C	6.00	24426
10	2022	C	10.00	2961	10	2022	P	6.00	24080
10	2022	P	4.00	2820	9	2022	C	10.00	23951
8	2022	P	5.50	2719	10	2022	C	5.00	23368
8	2022	P	5.00	2573	8	2022	C	12.10	22001
8	2022	C	8.10	2508	10	2022	P	3.50	20941
8	2022	C	7.50	2487	9	2022	P	4.00	20785
10	2022	P	3.00	2353	8	2022	C	6.00	20067
12	2022	C	10.00	2300	9	2022	C	7.00	19383
8	2022	C	7.40	2135	10	2022	C	10.00	19315
8	2022	C	11.00	2126	8	2022	P	6.00	19065
11	2022	C	10.00	2100	5	2023	P	2.00	18818
10	2022	C	7.00	1827	1	2023	C	10.00	18799
9	2022	C	9.00	1576	12	2022	C	5.00	18218
10	2022	C	8.00	1562	3	2023	C	10.00	18166
8	2022	P	5.75	1561	8	2022	C	8.00	18112
9	2022	C	7.00	1410	10	2022	P	5.00	17805
3	2023	P	5.00	1400	8	2022	P	5.00	17576
10	2022	P	2.50	1302	10	2022	P	4.00	17491
8	2022	P	4.00	1300	8	2022	C	9.00	17378
10	2023	P	2.00	1300	8	2022	P	7.00	17326
8	2022	C	9.50	1255	10	2022	C	8.00	17322
10	2022	C	12.00	1212	10	2022	P	2.00	16729
8	2022	C	8.50	1199	3	2023	P	3.00	16388
8	2022	C	7.10	1181	2	2023	C	10.00	16155
4	2023	P	3.00	1150	9	2022	C	4.00	15970
8	2022	C	6.80	1137	9	2022	P	3.00	15966
11	2022	P	4.00	1050	12	2022	P	5.00	15614
10	2022	C	11.00	1041	9	2022	P	2.50	15475
10	2022	P	4.50	1034	8	2022	C	7.50	15430
11	2022	C	9.00	1010	10	2023	P	2.00	15424
9	2022	C	11.00	1006	8	2022	P	3.00	15408
8	2022	C	7.70	1005	8	2022	P	4.00	15359
11	2022	C	11.00	1000	10	2022	C	7.00	15237
12	2022	C	9.00	1000	9	2022	C	9.00	15189
12	2022	C	11.00	1000	8	2022	P	5.50	15089
8	2022	P	4.50	993	9	2022	P	2.75	14887
10	2022	P	5.25	938	12	2022	C	6.00	14037
8	2022	P	6.15	907	10	2022	P	3.25	14016
9	2022	C	8.00	904	10	2023	P	2.50	13940
8	2022	P	5.85	850	9	2022	P	5.00	13616
4	2023	P	2.00	800	10	2023	P	3.00	13405
					10	2022	C	4	13308

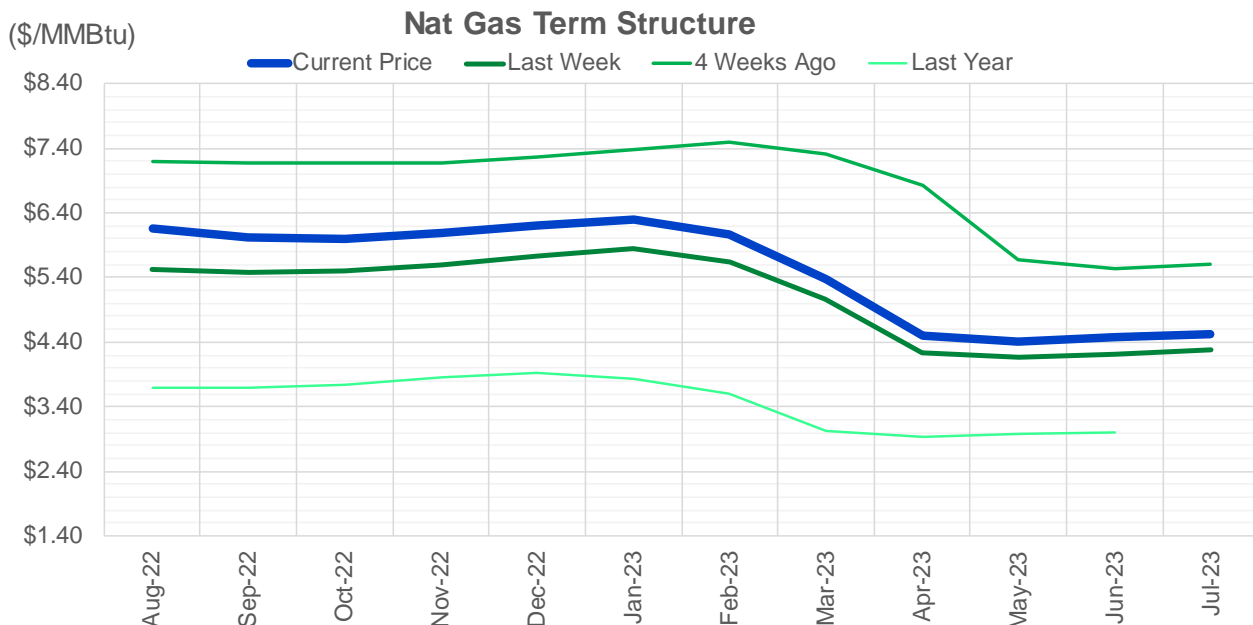
Source: CME, ICE

### Nat Gas Futures Open Interest CME and ICE Combined

CME Henry Hub Futures (10,000 MMBtu)				ICE Henry Hub Futures Contract Equivalent (10,000 MM			
	Current	Prior	Daily Change		Current	Prior	Daily Change
AUG 22	64739	68939	-4200	AUG 22	78762	78390	372
SEP 22	147265	144558	2707	SEP 22	79009	79725	-717
OCT 22	90917	90353	564	OCT 22	75930	75409	521
NOV 22	66198	64354	1844	NOV 22	62038	62056	-18
DEC 22	51524	51600	-76	DEC 22	64988	65104	-116
JAN 23	70959	70003	956	JAN 23	63601	63588	13
FEB 23	33578	32478	1100	FEB 23	55389	54791	597
MAR 23	47814	47914	-100	MAR 23	50872	50498	375
APR 23	65832	65601	231	APR 23	50744	50507	237
MAY 23	55447	55499	-52	MAY 23	50004	49992	13
JUN 23	20582	20707	-125	JUN 23	44319	44338	-19
JUL 23	19830	20047	-217	JUL 23	43332	43219	113
AUG 23	17619	17360	259	AUG 23	42674	42614	60
SEP 23	15586	15639	-53	SEP 23	41493	41426	67
OCT 23	40969	41063	-94	OCT 23	48302	48215	87
NOV 23	12289	12245	44	NOV 23	44376	44291	85
DEC 23	11844	11830	14	DEC 23	39845	39754	92
JAN 24	17997	17954	43	JAN 24	39421	39405	17
FEB 24	7664	7624	40	FEB 24	28698	28622	77
MAR 24	16424	16199	225	MAR 24	33514	33468	46
APR 24	13553	13373	180	APR 24	27421	27444	-23
MAY 24	6449	6441	8	MAY 24	26627	26620	8
JUN 24	2386	2386	0	JUN 24	23658	23648	11
JUL 24	2108	2127	-19	JUL 24	23403	23362	41
AUG 24	3112	3112	0	AUG 24	23725	23708	17
SEP 24	1711	1593	118	SEP 24	23173	23162	11
OCT 24	8455	8123	332	OCT 24	26465	26454	11
NOV 24	4707	4707	0	NOV 24	24179	24148	31
DEC 24	7127	7127	0	DEC 24	27258	27212	47
JAN 25	14764	14764	0	JAN 25	19669	19707	-38

Source: CME, ICE





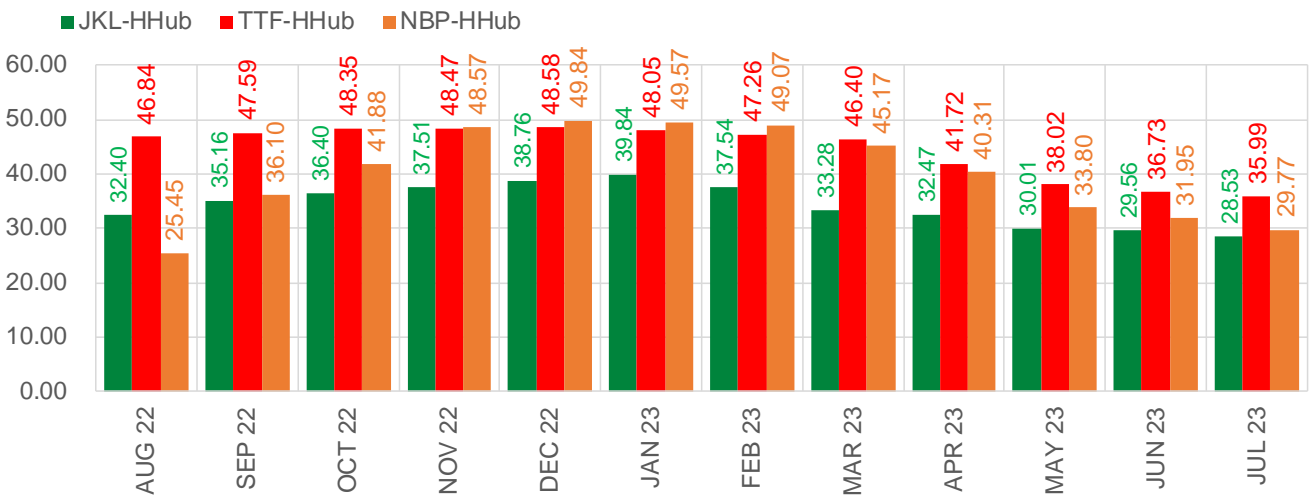
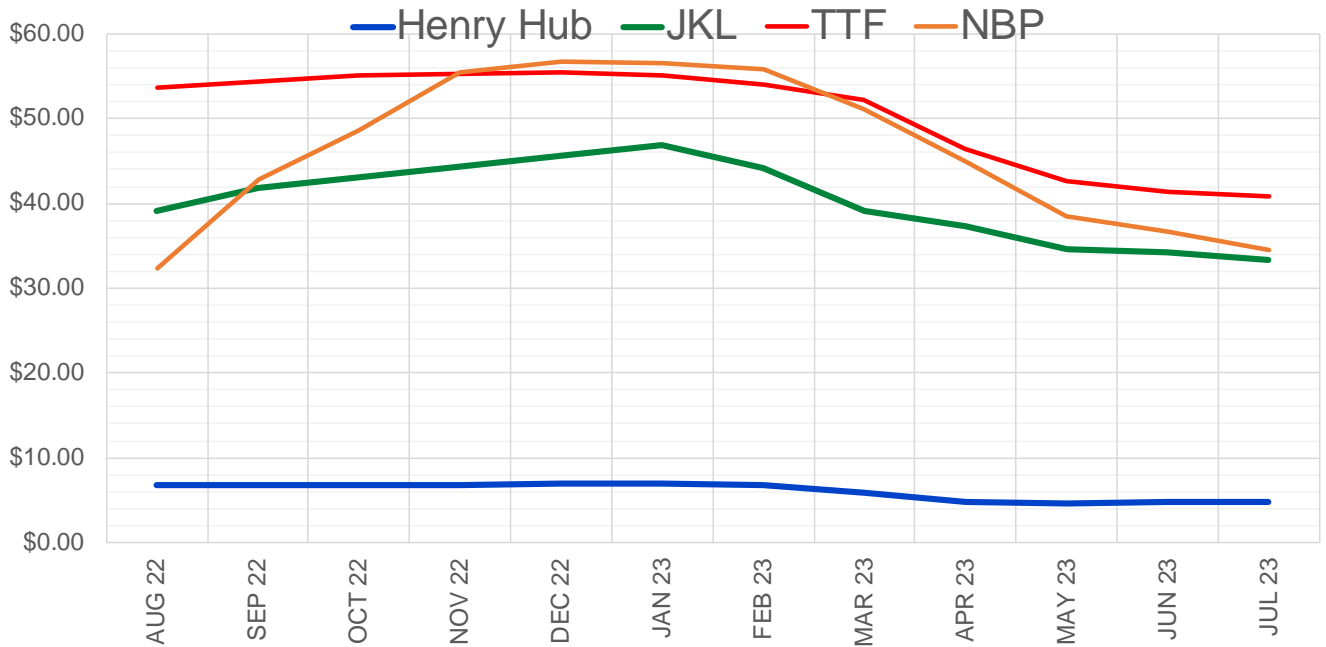
	Aug-22	Sep-22	Oct-22	Nov-22	Dec-22	Jan-23	Feb-23	Mar-23	Apr-23	May-23	Jun-23	Jul-23
<b>Current Price</b>	<b>\$6.163</b>	<b>\$6.021</b>	<b>\$6.003</b>	<b>\$6.100</b>	<b>\$6.211</b>	<b>\$6.294</b>	<b>\$6.065</b>	<b>\$5.376</b>	<b>\$4.489</b>	<b>\$4.409</b>	<b>\$4.469</b>	<b>\$4.528</b>
Last Week	\$5.523	\$5.487	\$5.495	\$5.605	\$5.734	\$5.839	\$5.642	\$5.061	\$4.237	\$4.162	\$4.223	\$4.283
vs. Last Week	\$0.640	\$0.534	\$0.508	\$0.495	\$0.477	\$0.455	\$0.423	\$0.315	\$0.252	\$0.247	\$0.246	\$0.245
4 Weeks Ago	\$7.189	\$7.180	\$7.164	\$7.170	\$7.266	\$7.384	\$7.486	\$7.303	\$6.818	\$5.669	\$5.548	\$5.604
vs. 4 Weeks Ago	-\$1.026	-\$1.159	-\$1.161	-\$1.070	-\$1.055	-\$1.090	-\$1.421	-\$1.927	-\$2.329	-\$1.260	-\$1.079	-\$1.076
Last Year	\$3.696	\$3.682	\$3.684	\$3.748	\$3.851	\$3.919	\$3.840	\$3.591	\$3.028	\$2.940	\$2.970	\$3.006
vs. Last Year	\$2.467	\$2.339	\$2.319	\$2.352	\$2.360	\$2.375	\$2.225	\$1.785	\$1.461	\$1.469	\$1.499	\$1.522

	Units	Cash Settled	Prompt Settle	Cash to Prompt
AGT Citygate	\$/MMBtu	6.12	5.66	-0.46
TETCO M3	\$/MMBtu	5.92	5.03	-0.89
FGT Zone 3	\$/MMBtu	6.05	6.94	0.89
Zone 6 NY	\$/MMBtu	6.05	5.01	-1.04
Chicago Citygate	\$/MMBtu	6.29	5.37	-0.92
Michcon	\$/MMBtu	6.29	5.33	-0.97
Columbia TCO Pool	\$/MMBtu	6.01	4.92	-1.09
Ventura	\$/MMBtu	5.95	5.25	-0.71
Rockies/Opal	\$/MMBtu	6.50	5.15	-1.35
El Paso Permian Basin	\$/MMBtu	6.24	4.95	-1.29
Socal Citygate	\$/MMBtu	7.62	6.49	-1.13
Malin	\$/MMBtu	6.25	5.62	-0.63
Houston Ship Channel	\$/MMBtu	6.41	5.37	-1.04
Henry Hub Cash	\$/MMBtu	6.64	5.26	-1.39
AECO Cash	C\$/GJ	3.97	3.50	-0.47
Station2 Cash	C\$/GJ	4.07	5.35	1.28
Dawn Cash	C\$/GJ	6.32	5.35	-0.97

Source: CME, Bloomberg

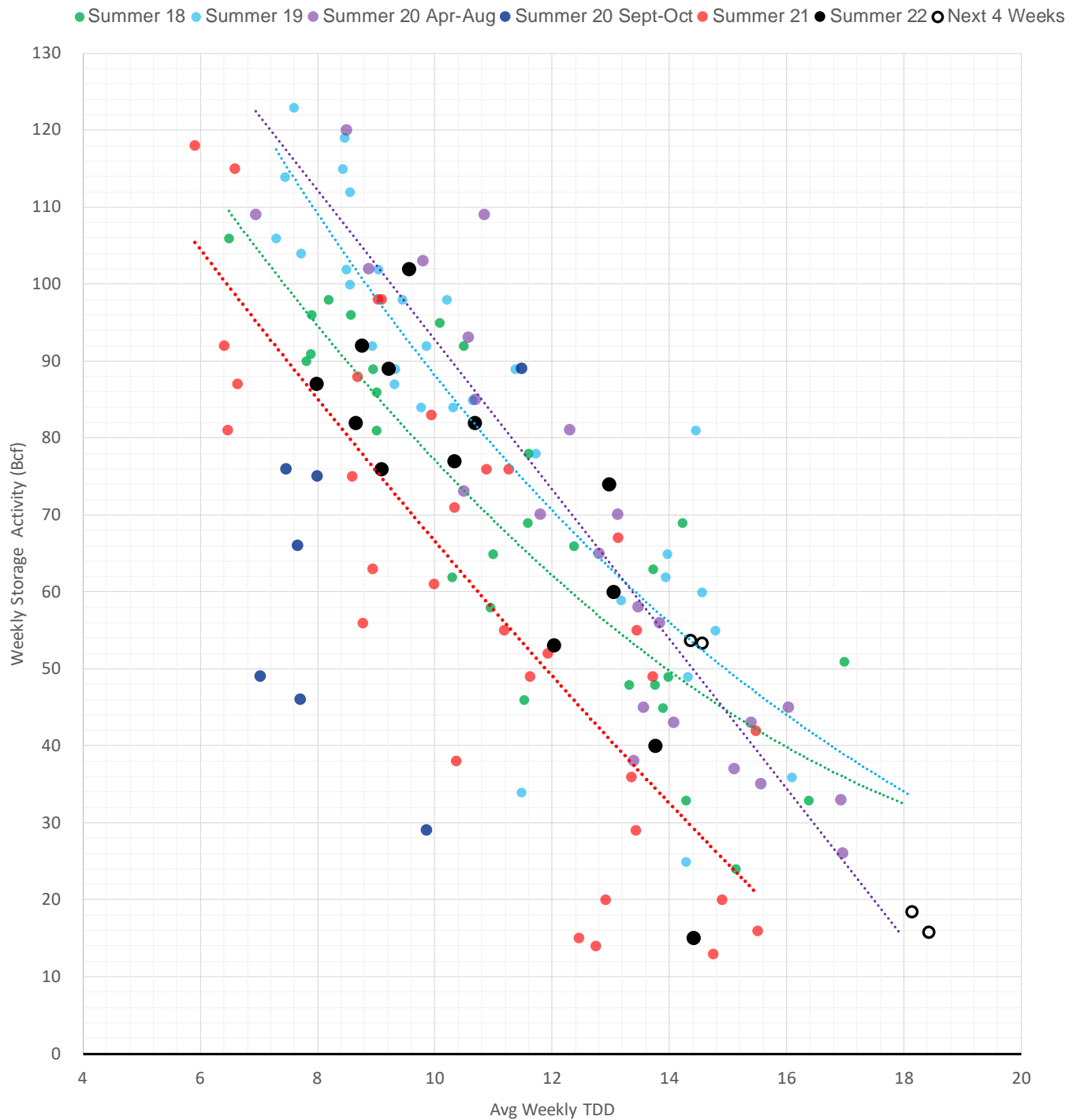
	Units	Current Price	vs. Last Week	vs. 4 Weeks Ago	vs. Last Year
NatGas Jul21/Oct21	\$/MMBtu	2.224	▲ 0.000	▲ 0.000	▲ 2.186
NatGas Oct21/Nov21	\$/MMBtu	0.361	▲ 0.000	▲ 0.000	▲ 0.295
NatGas Oct21/Jan22	\$/MMBtu	-1.817	▲ 0.000	▲ 0.000	▼ -2.061
NatGas Apr22/Oct22	\$/MMBtu	1.238	▲ 1.081	▼ -0.795	▲ 1.243
WTI Crude	\$/Bbl	96.30	▼ -2.230	▼ -19.010	▲ 23.170
Brent Crude	\$/Bbl	99.57	▼ -1.120	▼ -18.940	▲ 24.810
Fuel Oil, NY Harbour 1%	\$/Bbl	97.18	▲ 0.000	▲ 0.000	▲ 0.000
Heating Oil	cents/Gallon	366.59	▲ 25.530	▼ -88.110	▲ 152.240
Propane, Mt. Bel	cents/Gallon	1.15	▼ -0.004	▼ -0.061	▲ 0.046
Ethane, Mt. Bel	cents/Gallon	0.52	▲ 0.061	▼ -0.138	▲ 0.213
Coal, PRB	\$/MTon	12.30	▲ 0.000	▲ 0.000	▲ 0.000
Coal, PRB	\$/MMBtu	0.70			
Coal, ILB	\$/MTon	31.05	▲ 0.000	▲ 0.000	▲ 0.000
Coal, ILB	\$/MMBtu	1.32			

### Nat Gas Term Structure (\$MMBTU)



	AUG 22	SEP 22	OCT 22	NOV 22	DEC 22	JAN 23	FEB 23	MAR 23	APR 23	MAY 23	JUN 23	JUL 23
<b>Henry Hub</b>	\$6.801	\$6.705	\$6.702	\$6.833	\$6.940	\$7.014	\$6.707	\$5.884	\$4.770	\$4.650	\$4.708	\$4.764
<b>JKL</b>	\$39.205	\$41.860	\$43.105	\$44.340	\$45.700	\$46.850	\$44.250	\$39.165	\$37.235	\$34.655	\$34.270	\$33.295
<b>JKL-HHub</b>	\$32.404	\$35.155	\$36.403	\$37.507	\$38.760	\$39.836	\$37.543	\$33.281	\$32.465	\$30.005	\$29.562	\$28.531
<b>TTF</b>	\$53.642	\$54.297	\$55.050	\$55.305	\$55.521	\$55.062	\$53.968	\$52.286	\$46.494	\$42.674	\$41.437	\$40.752
<b>TTF-HHub</b>	\$46.841	\$47.592	\$48.348	\$48.472	\$48.581	\$48.048	\$47.261	\$46.402	\$41.724	\$38.024	\$36.729	\$35.988
<b>NBP</b>	\$32.253	\$42.800	\$48.582	\$55.400	\$56.783	\$56.586	\$55.772	\$51.049	\$45.077	\$38.446	\$36.660	\$34.537
<b>NBP-HHub</b>	\$25.452	\$36.095	\$41.880	\$48.567	\$49.843	\$49.572	\$49.065	\$45.165	\$40.307	\$33.796	\$31.952	\$29.773

## Weather Storage Model - Next 4 Week Forecast



The risk of trading futures and options and other derivatives involves a substantial risk of loss and is not suitable for all persons. Each person must consider whether a particular trade, combination of trades, or strategy is suitable for that person's financial means and objectives. Past results are not necessarily indicative of future results. This communication may contain links to third party websites which are not under the control of and are not maintained by ION Energy Group, and ION Energy Group is not responsible for their content.

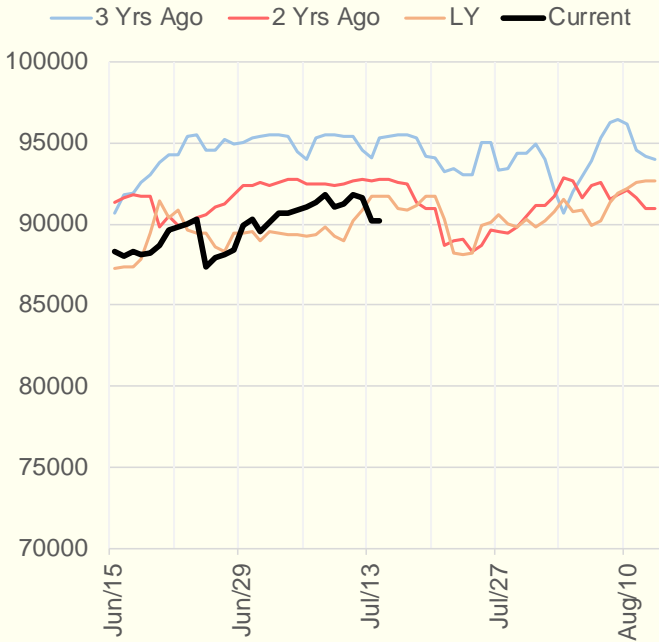


## Weather Storage Model - Next 4 Week Forecast

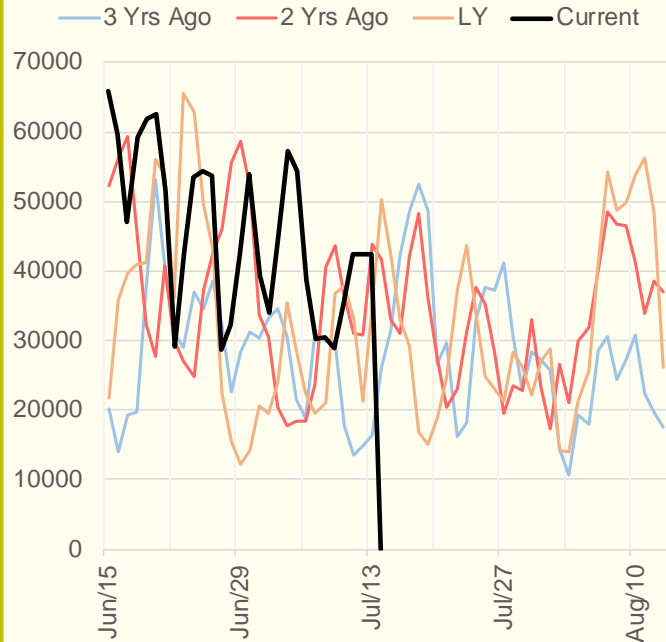


The risk of trading futures and options and other derivatives involves a substantial risk of loss and is not suitable for all persons. Each person must consider whether a particular trade, combination of trades, or strategy is suitable for that person's financial means and objectives. Past results are not necessarily indicative of future results. This communication may contain links to third party websites which are not under the control of and are not maintained by ION Energy Group, and ION Energy Group is not responsible for their content.

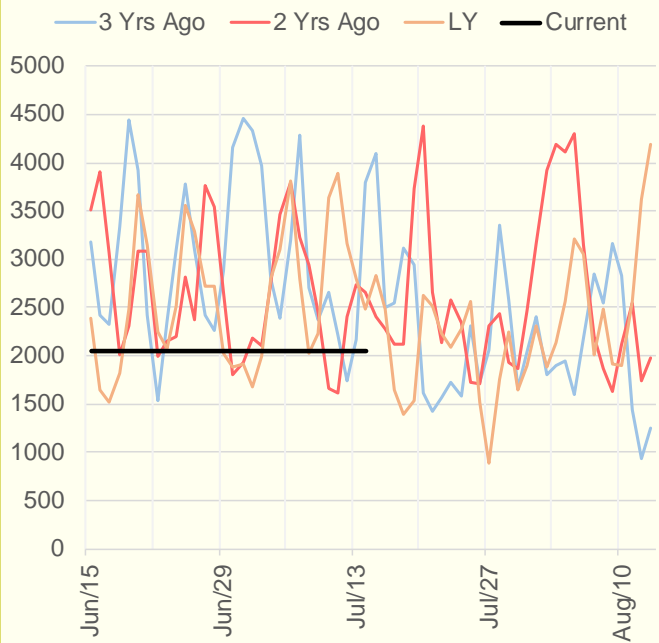
### NRC Nuclear Daily Output



### Genscape Wind



### CALI Wind



### TEXAS Wind

