

	Current	Δ from YD	Δ from 7D Avg
Nat Gas Prompt	\$ 6.65	▼ \$ (0.30)	▼ \$ (0.48)

	Current	Δ from YD	Δ from 7D Avg
WTI Prompt	\$ 111.20	▲ \$ 1.64	▼ \$ (1.7)

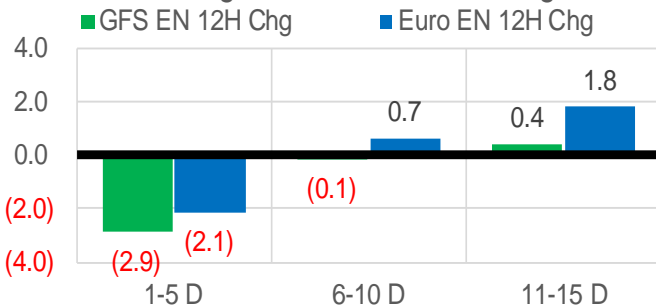
	Current	Δ from YD	Δ from 7D Avg
Brent Prompt	\$ 115.75	▲ \$ 1.62	▼ \$ (0.4)

Page Menu

- [Short-term Weather Model Outlooks](#)
- [Lower 48 Component Models](#)
- [Regional S/D Models Storage Projection](#)
- [Weather Model Storage Projection](#)
- [Supply – Demand Trends](#)
- [Nat Gas Options Volume and Open Interest](#)
- [Nat Gas Futures Open Interest](#)
- [Price Summary](#)

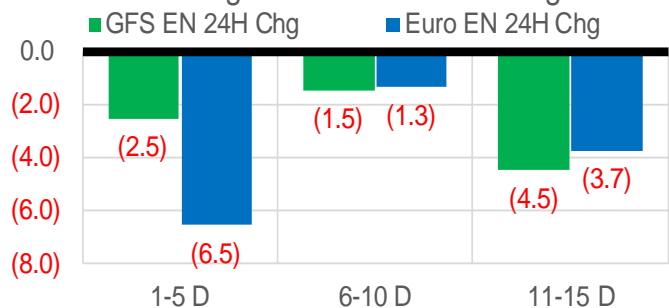
Vs. 12H Ago

L48 Region - 00z TDD vs 12H Ago



Vs. 24H Ago

L48 Region - 00z TDD vs 24H Ago



	Current	Δ from YD	Δ from 7D Avg
US Dry Production	95.9	▼ -0.15	▲ 0.07

	Current	Δ from YD	Δ from 7D Avg
US Power Burns	37.8	▲ 2.74	▲ 0.25

	Current	Δ from YD	Δ from 7D Avg
US ResComm	8.1	▼ -0.08	▼ -0.35

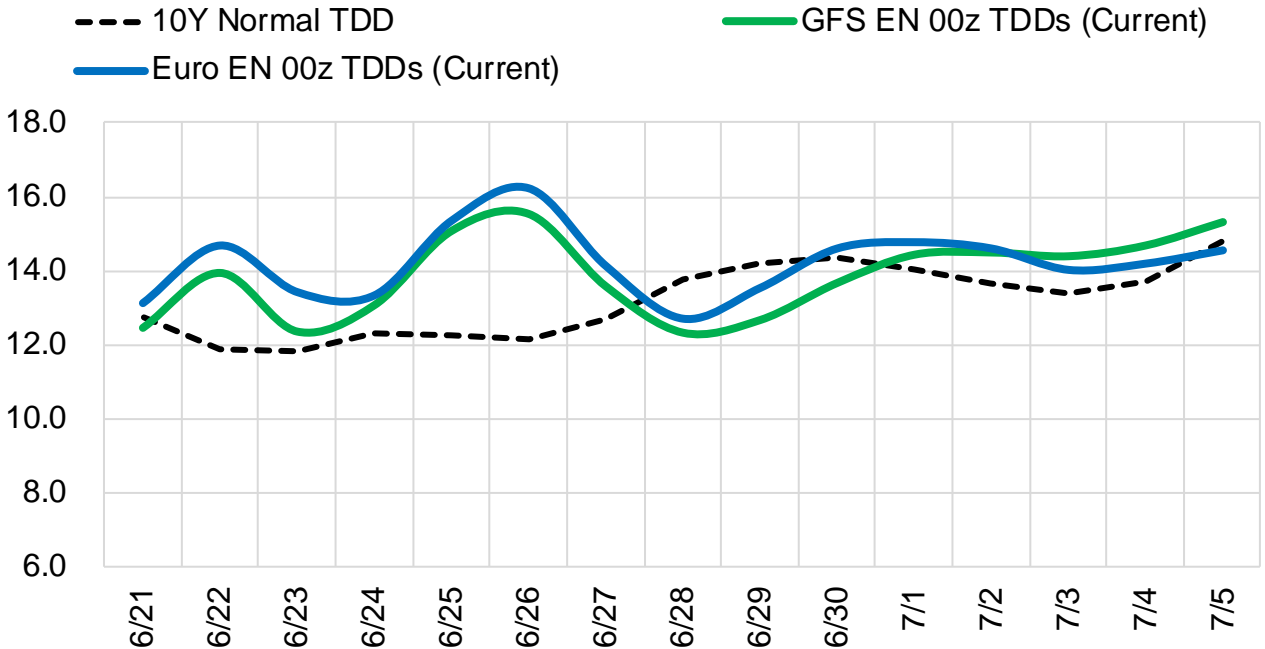
	Current	Δ from YD	Δ from 7D Avg
Canadian Imports	5.5	▼ -0.03	▼ -0.32

	Current	Δ from YD	Δ from 7D Avg
Net LNG Exports	11.2	▲ 0.46	▲ 0.54

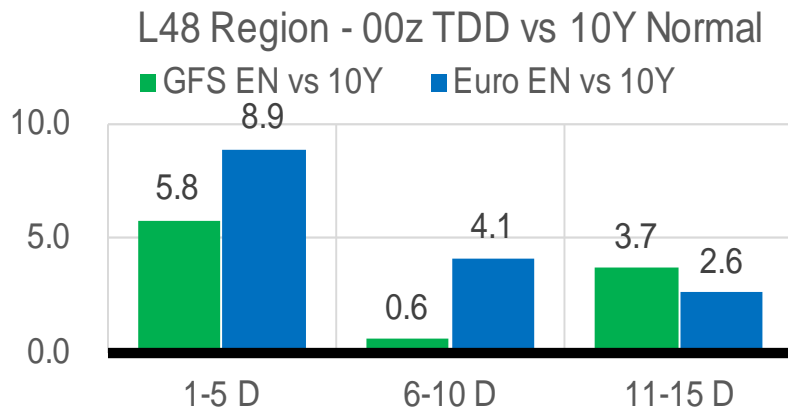
	Current	Δ from YD	Δ from 7D Avg
Mexican Exports	7.1	▲ 0.07	▼ -0.02

Short-term Weather Model Outlooks (00z)

L48 Region



Vs. 10Y Normal



Source: WSI, Bloomberg

Lower 48 Component Models

Daily Balances

	15-Jun	16-Jun	17-Jun	18-Jun	19-Jun	20-Jun	21-Jun	DoD	vs. 7D
Lower 48 Dry Production	95.9	96.2	95.7	95.9	96.0	96.0	95.9	▼ -0.2	▼ -0.1
Canadian Imports	6.3	6.3	5.8	5.4	5.4	5.6	5.5	▼ 0.0	▼ -0.2
L48 Power	42.2	41.1	39.8	33.0	31.2	35.0	37.8	▲ 2.7	▲ 0.7
L48 Residential & Commercial	8.6	8.2	8.6	8.5	8.5	8.2	8.1	▼ -0.1	▼ -0.3
L48 Industrial	22.4	22.2	22.0	21.8	21.8	21.7	21.5	▼ -0.2	▼ -0.5
L48 Lease and Plant Fuel	5.2	5.2	5.2	5.2	5.2	5.2	5.2	▼ 0.0	▼ 0.0
L48 Pipeline Distribution	2.8	2.7	2.6	2.3	2.2	2.4	2.5	▲ 0.1	▲ 0.0
L48 Regional Gas Consumption	81.1	79.4	78.2	70.8	68.8	72.5	75.0	▲ 2.5	▼ -0.1
Net LNG Delivered	10.47	10.93	10.92	10.63	10.58	10.75	11.21	▲ 0.5	▲ 0.5
Total Mexican Exports	7.4	7.2	7.0	6.7	6.8	7.0	7.1	▲ 0.1	▲ 0.0
Implied Daily Storage Activity	3.2	4.9	5.4	13.1	15.2	11.4	8.1		
EIA Reported Daily Storage Activity									
Daily Model Error									

EIA Storage Week Balances

	13-May	20-May	27-May	3-Jun	10-Jun	17-Jun	WoW	vs. 4W
Lower 48 Dry Production	96.2	95.3	96.3	97.0	96.4	95.9	▼ -0.5	▼ -0.4
Canadian Imports	5.2	4.9	4.9	4.8	5.4	6.1	▲ 0.6	▲ 1.1
L48 Power	26.8	30.4	30.0	30.4	32.3	37.7	▲ 5.4	▲ 7.0
L48 Residential & Commercial	14.5	10.0	11.6	9.1	8.6	8.3	▼ -0.3	▼ -1.6
L48 Industrial	20.9	21.3	20.2	21.5	21.5	22.3	▲ 0.8	▲ 1.2
L48 Lease and Plant Fuel	5.2	5.1	5.2	5.2	5.2	5.2	▼ 0.0	▼ 0.0
L48 Pipeline Distribution	2.3	2.3	2.4	2.2	2.2	2.5	▲ 0.3	▲ 0.2
L48 Regional Gas Consumption	69.6	69.1	69.4	68.4	69.8	76.0	▲ 6.2	▲ 6.8
Net LNG Exports	12.2	12.2	13.0	12.8	12.3	10.7	▼ -1.6	▼ -1.9
Total Mexican Exports	7.0	7.0	7.0	7.1	7.1	7.2	▲ 0.1	▲ 0.1
Implied Daily Storage Activity	12.5	11.9	11.6	13.5	12.6	8.1	-4.5	
EIA Reported Daily Storage Activity	12.7	12.4	11.7	14.6	13.1			
Daily Model Error	-0.2	-0.5	-0.1	-1.0	-0.5			

Monthly Balances

	2Yr Ago Jun-20	LY Jun-21	Feb-22	Mar-22	Apr-22	May-22	MTD Jun-22	MoM	vs. LY
Lower 48 Dry Production	87.9	93.2	92.7	93.5	96.0	96.1	96.2	▲ 0.1	▲ 3.0
Canadian Imports	4.0	4.8	6.5	5.2	5.8	5.1	5.6	▲ 0.5	▲ 0.8
L48 Power	34.9	35.9	28.7	25.5	24.7	28.8	34.9	▲ 6.1	▼ -1.0
L48 Residential & Commercial	8.8	8.9	43.3	31.5	22.5	12.3	8.5	▼ -3.8	▼ -0.4
L48 Industrial	20.0	20.2	22.1	19.7	21.4	20.9	21.9	▲ 0.9	▲ 1.6
L48 Lease and Plant Fuel	4.8	5.0	5.1	5.2	5.2	5.2	5.2	▲ 0.0	▲ 0.2
L48 Pipeline Distribution	2.3	2.4	3.5	2.9	2.6	2.3	2.4	▲ 0.0	▼ -0.1
L48 Regional Gas Consumption	70.8	72.5	102.7	84.7	76.4	69.5	72.8	▲ 3.3	▲ 0.3
Net LNG Exports	4.0	10.2	12.4	12.9	12.3	12.5	11.5	▼ -1.0	▲ 1.3
Total Mexican Exports	5.5	7.4	6.2	6.5	6.7	7.0	7.1	▲ 0.1	▼ -0.3
Implied Daily Storage Activity	11.5	8.0	-22.1	-5.4	6.3	12.2	10.5		
EIA Reported Daily Storage Activity									
Daily Model Error									

Source: Bloomberg, analytix.ai

Daily Average Generation Data

Nuclear Generation Daily Average - GWh (NRC)

	13-Jun	14-Jun	15-Jun	16-Jun	17-Jun	18-Jun	19-Jun	DoD	vs. 7D
NRC Nuclear Daily Output	88.1	88.2	88.3	88.0	88.3	88.3	88.3	0.0	0.1
NRC Nuclear Max Capacity	104.9	104.9	104.9	104.9	104.9	104.9	104.9	0.0	0.0
NRC Nuclear Outage	16.8	16.7	16.6	16.8	16.6	16.6	16.6	0.0	-0.1
NRC % Nuclear Cap Utilization	89.5	89.6	89.8	89.5	89.8	89.8	89.8	0.0	0.1

Wind Generation Daily Average - MWh (EIA)

	13-Jun	14-Jun	15-Jun	16-Jun	17-Jun	18-Jun	19-Jun	DoD	vs. 7D
CALI Wind	3629	2694	2048	2048	2048	2048	2048	0	-371
TEXAS Wind	24285	23941	22879	22879	22879	22879	22879	0	-411
US Wind	72688	74489	63443	63443	63443	63443	63443	0	-3382

Generation Daily Average - MWh (EIA)

	13-Jun	14-Jun	15-Jun	16-Jun	17-Jun	18-Jun	19-Jun	DoD	vs. 7D
US Wind	72688	74489	63443	63443	63443	63443	63443	0	-3382
US Solar	17875	17585	19728	19728	19728	19728	19728	0	666
US Petroleum	1860	1189	1333	1333	1333	1333	1333	0	-64
US Other	8928	8941	9775	9775	9775	9775	9775	0	280
US Coal	106650	112895	119543	119543	119543	119543	119543	0	3257
US Nuke	91118	91249	90696	90696	90696	90696	90696	0	-163
US Hydro	36854	36722	39690	39690	39690	39690	39690	0	967
US Gas	212432	210108	220700	220700	220700	220700	220700	0	3143

See National Wind and Nuclear daily charts

Source: Bloomberg, analytix.ai

Storage Week Average Generation Data

Nuclear Generation Weekly Average - GWh (NRC)

	13-May	20-May	27-May	3-Jun	10-Jun	17-Jun	WoW	WoW Bcf/d Impact
NRC Nuclear Daily Output	79.3	81.7	84.2	86.2	88.3	88.2	-0.1	0.0
NRC Nuclear Max Capacity	104.9	104.9	104.9	104.9	104.9	104.9	0.0	
NRC Nuclear Outage	25.5	23.2	20.6	18.7	16.6	16.7	0.1	
NRC % Nuclear Cap Utilization	80.7	83.1	85.7	87.6	89.8	89.7	-0.1	

Wind Generation Weekly Average - MWh (EIA)

	13-May	20-May	27-May	3-Jun	10-Jun	17-Jun	WoW	WoW Bcf/d Impact
CALI Wind	3983	3452	2798	3268	3842	3032	-810	0.1
TEXAS Wind	17705	15706	14010	17915	12449	20462	8012	-1.4
US Wind	64974	50251	50129	57939	37417	57090	19673	-3.5
							53%	
						0.6		

Generation Weekly Average - MWh (EIA)

	13-May	20-May	27-May	3-Jun	10-Jun	17-Jun	WoW	WoW Bcf/d Impact
US Wind	64974	50251	50129	57939	37417	57090	19673	-3.5
US Solar	18000	19634	17534	18656	18807	18731	-75	0.0
US Petroleum	341	262	448	863	968	1244	276	0.0
US Other	7615	7871	7684	7866	8001	8688	687	-0.1
US Coal	81273	88922	88570	89706	95415	106566	11150	-2.0
US Nuke	83391	85510	88016	89728	91641	91235	-406	0.1
US Hydro	28968	31973	33772	35051	36328	37495	1167	-0.2
US Gas	148473	172224	160070	163383	178204	201845	23641	4.3

See National Wind and Nuclear daily charts

Source: Bloomberg, analytix.ai

Monthly Average Generation Data

Nuclear Generation Monthly Average - GWh (NRC)

	2Yr Ago	LY	MTD				Last 30 days	MoM (MTD vs LY)	Last 30 days YoY
	Same 30 days	Same 30 days	Mar-22	Apr-22	May-22	Jun-22			
	NRC Nuclear Daily Output	88.5	88.3	81.3	73.3	81.7			
NRC Nuclear Max Capacity	104.9	104.9	104.9	104.9	104.9	104.9	104.9	0.0	0.0
NRC Nuclear Outage	16.4	16.6	23.6	31.6	23.2	16.7	17.7	-6.5	1.1
NRC % Nuclear Cap Utilization	90.0	89.7	82.7	74.5	83.0	89.7	88.6	6.7	-1.1

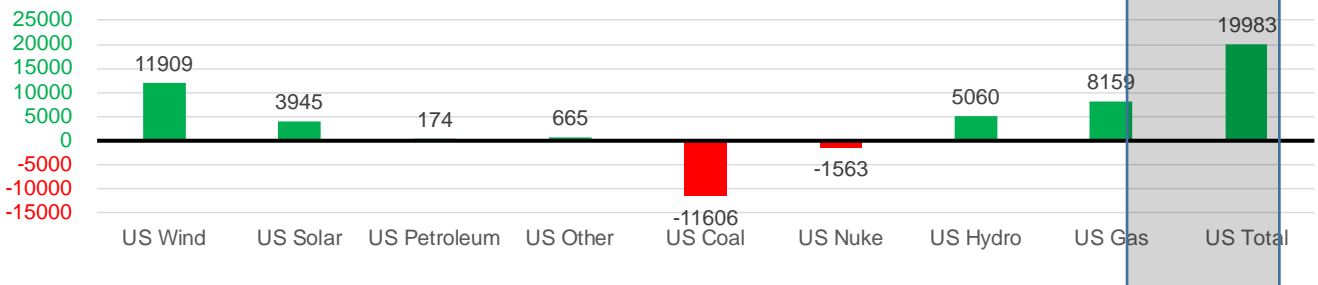
Wind Generation Monthly Average - MWh (EIA)

	2Yr Ago	LY	MTD				Last 30 days	MoM (MTD vs LY)	Last 30 days YoY
	Same 30 days	Same 30 days	Mar-22	Apr-22	May-22	Jun-22			
	CALI Wind	2388	3136	2250	3186	3361			
TEXAS Wind	10161	10387	14837	16311	16756	17441	17216	685	6828
US Wind	39271	40429	58528	64183	56462	49974	52338	-6488	11909

Generation Monthly Average - MWh (EIA)

	2Yr Ago	LY	MTD				Last 30 days	MoM (MTD vs LY)	Last 30 days YoY
	Same 30 days	Same 30 days	Mar-22	Apr-22	May-22	Jun-22			
	US Wind	39271	40429	58528	64183	56462			
US Solar	11402	14765	14061	16296	18186	18997	18710	▼ -287.4	▲ 3945
US Petroleum	595	820	985	985	518	1149	993	▼ -156	▲ 174
US Other	8117	7673	7206	7386	7724	8659	8338	▼ -321	▲ 665
US Coal	83641	111200	82290	77545	85273	105490	99593	▼ -5897	▼ -11606
US Nuke	92162	91938	85256	77217	85496	91235	90375	▼ -859	▼ -1563
US Hydro	37919	31622	33959	29022	31369	37494	36683	▼ -812	▲ 5060
US Gas	172923	176400	137232	133068	157565	197797	184560	▼ -5968	▲ 8159
US Total	444754	475210	419838	406223	443965	514848	495192	▼ -14301	▲ 19983

Last 30 days YoY



See National Wind and Nuclear daily charts

Source: Bloomberg, analytix.ai

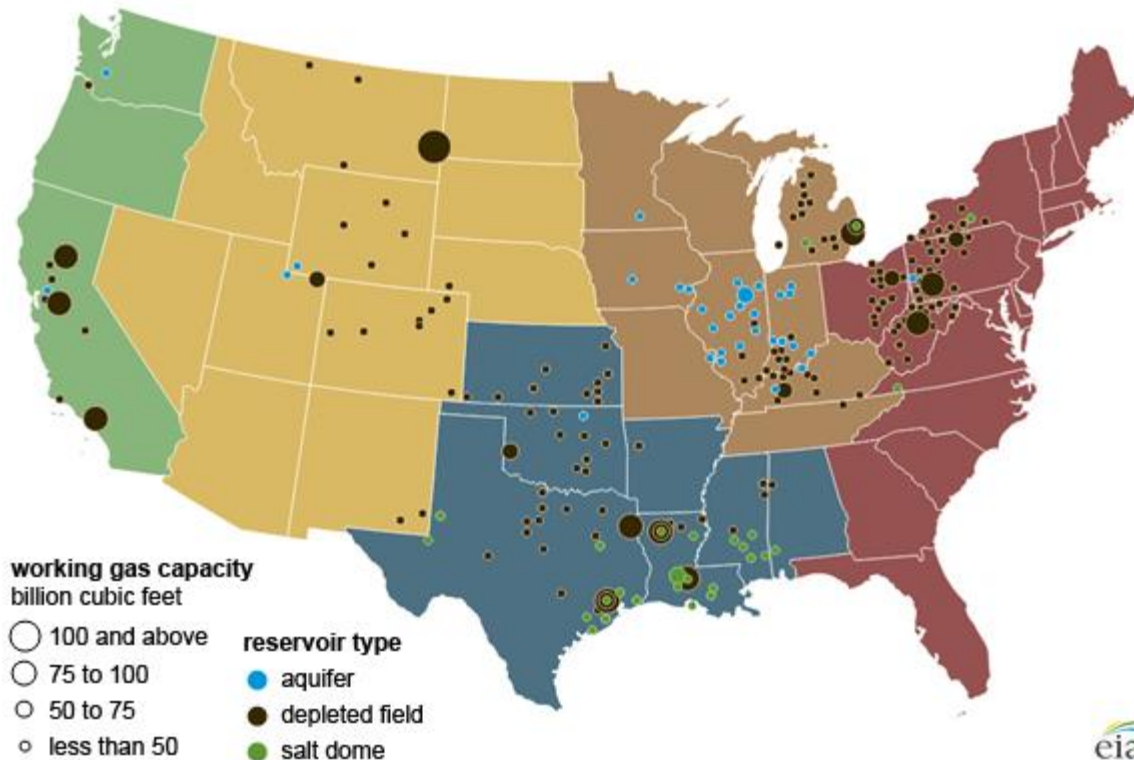
Regional S/D Models Storage Projection

Week Ending 17-Jun

	Daily Raw Storage	Daily Adjustment Factor	Daily Average Storage Activity (Adjusted) *	Weekly Adjusted Storage Activity
L48	9.2	-0.3	8.9	62
East	1.6	1.7	3.3	23
Midwest	4.3	-1.1	3.2	22
Mountain	4.6	-3.9	0.7	5
South Central	-3.3	3.8	0.5	4
Pacific	2.0	-0.8	1.2	8

*Adjustment Factor is calculated based on historical regional deltas

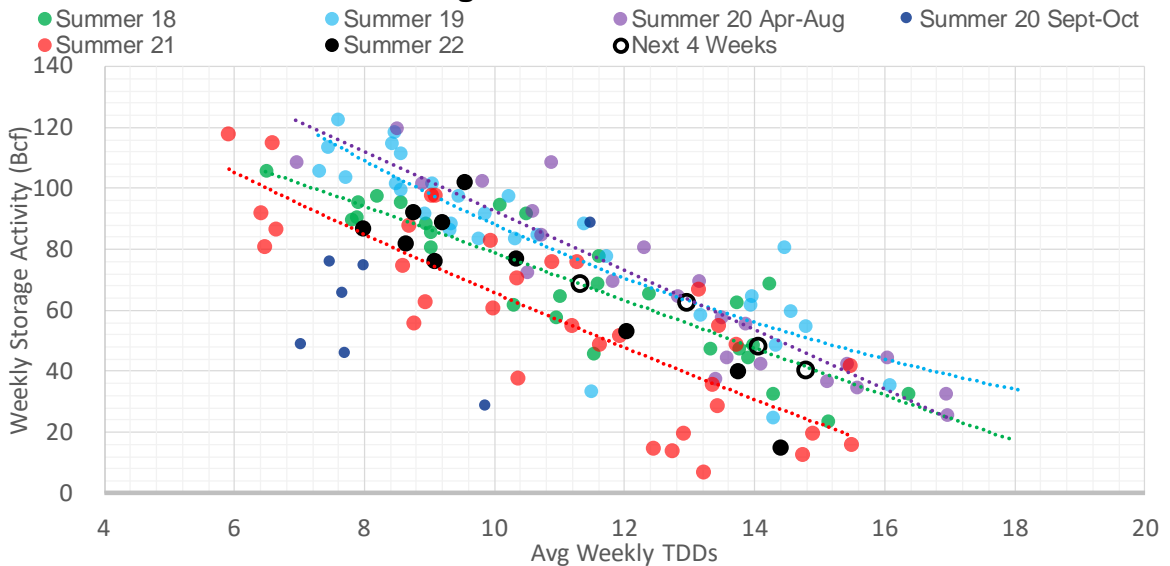
U.S. underground natural gas storage facilities by type (July 2015)



Weather Model Storage Projection

Next report and beyond		
Week Ending	GWDDs	Week Storage Projection
17-Jun	13	62
24-Jun	11	69
01-Jul	14	48
08-Jul	15	40

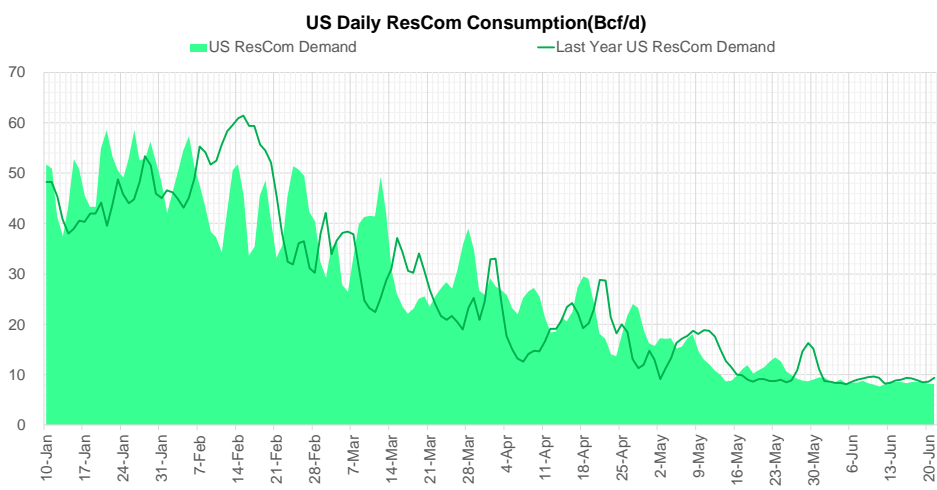
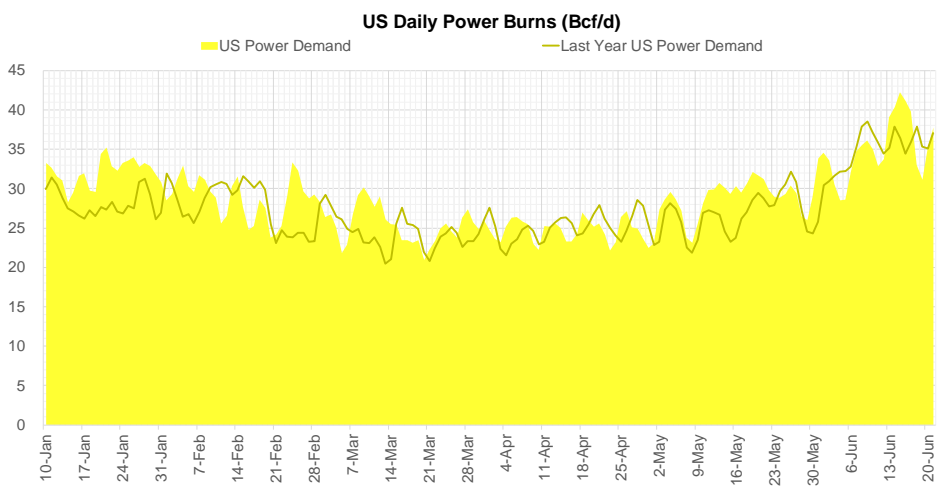
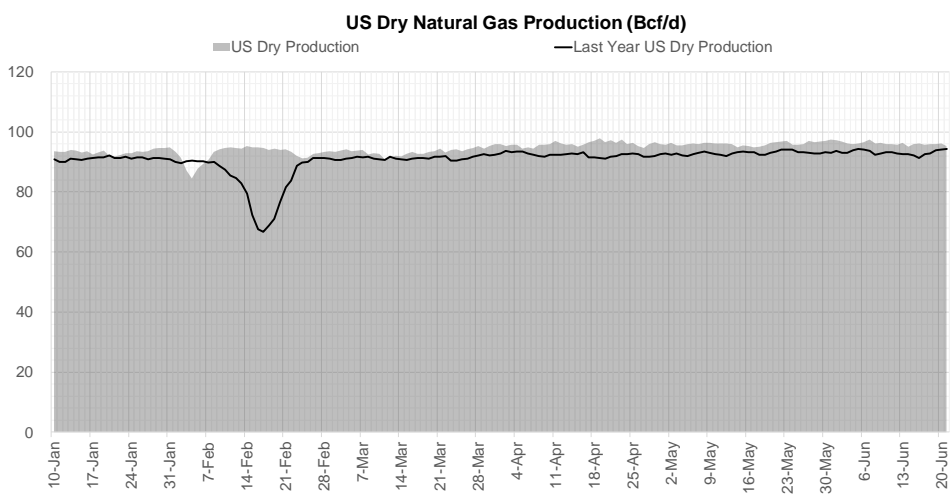
Weather Storage Model - Next 4 Week Forecast



Go to larger image



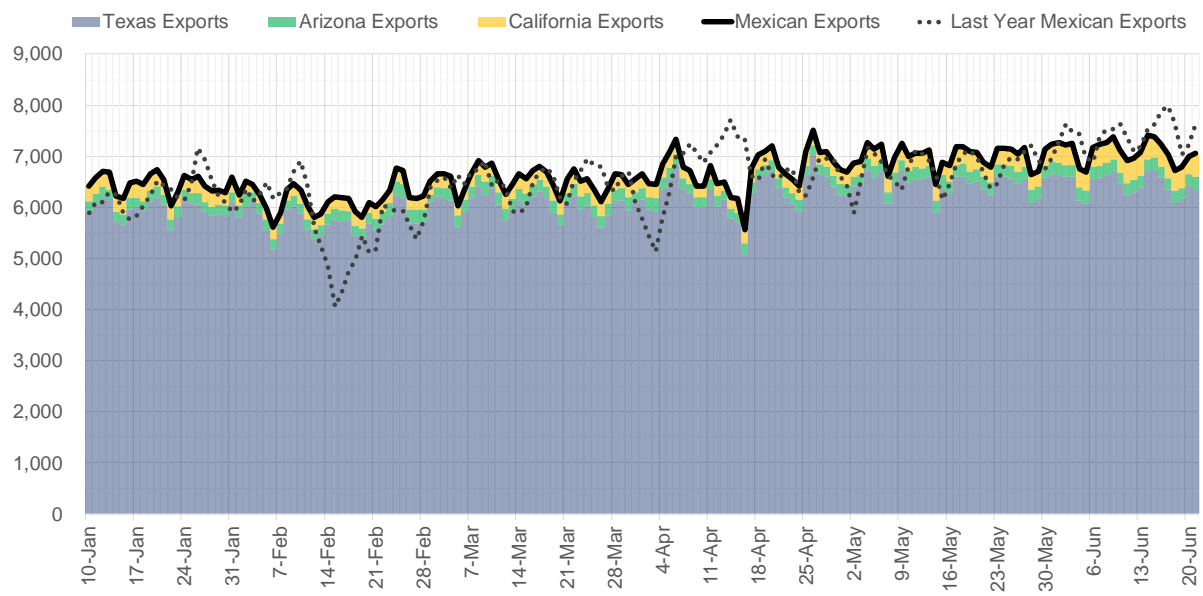
Supply – Demand Trends



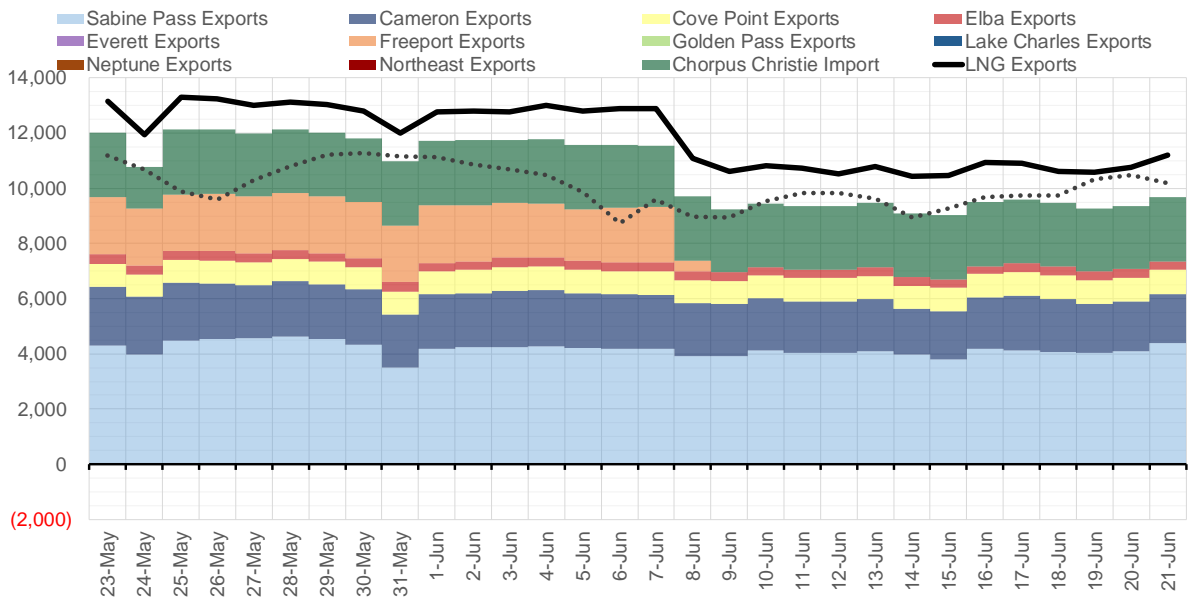
Source: Bloomberg

The risk of trading futures and options and other derivatives involves a substantial risk of loss and is not suitable for all persons. Each person must consider whether a particular trade, combination of trades, or strategy is suitable for that person's financial means and objectives. Past results are not necessarily indicative of future results. This communication may contain links to third party websites which are not under the control of and are not maintained by ION Energy Group, and ION Energy Group is not responsible for their content.

Mexican Exports (MMcf/d)



Net LNG Exports - Last 30 days (MMcf/d)



Source: Bloomberg

The risk of trading futures and options and other derivatives involves a substantial risk of loss and is not suitable for all persons. Each person must consider whether a particular trade, combination of trades, or strategy is suitable for that person's financial means and objectives. Past results are not necessarily indicative of future results. This communication may contain links to third party websites which are not under the control of and are not maintained by ION Energy Group, and ION Energy Group is not responsible for their content.

Nat Gas Options Volume and Open Interest CME and ICE Combined

CONTRACT MONTH	CONTRACT YEAR	PUT/CALL	STRIKE	CUMULATIVE VOL	CONTRACT MONTH	CONTRACT YEAR	PUT/CALL	STRIKE	CUMULATIVE OI
8	2022	C	10.00	2994	8	2022	C	10.00	45252
7	2022	P	6.00	2760	7	2022	C	11.00	41325
7	2022	P	7.00	2537	8	2022	C	12.00	36623
7	2022	C	8.00	2326	10	2022	C	6.00	35484
7	2022	C	9.00	1679	8	2022	C	10.50	31141
7	2022	P	6.50	1596	10	2022	P	6.00	23925
7	2022	C	7.50	1572	7	2022	P	6.00	23811
10	2022	C	9.50	1501	9	2022	C	6.00	23690
10	2022	C	9.60	1500	7	2022	C	10.00	23634
8	2022	P	6.50	1432	10	2022	C	5.00	23569
7	2022	P	5.50	1411	7	2022	C	9.00	23239
8	2022	C	10.50	1321	7	2022	C	9.50	23207
7	2022	C	9.50	1162	8	2022	C	12.10	22006
7	2022	P	7.50	1071	10	2022	P	3.00	21607
8	2022	P	4.50	1057	8	2022	P	6.00	21062
7	2022	P	7.30	988	9	2022	C	10.00	21005
7	2022	P	6.75	970	10	2022	P	3.50	20652
8	2022	P	6.70	906	7	2022	C	11.10	20512
8	2022	P	6.95	900	10	2022	P	2.50	19870
9	2022	P	6.75	900	8	2022	C	6.00	19642
9	2022	P	6.95	900	5	2023	P	2.00	19452
8	2022	P	7.00	863	9	2022	P	4.00	19391
8	2022	C	11.00	862	7	2022	C	6.00	18994
3	2023	P	5.00	850	7	2022	C	8.00	18643
7	2022	C	8.50	848	7	2022	C	7.00	18469
10	2022	P	5.00	796	12	2022	C	5.00	18221
9	2022	C	14.00	786	9	2022	C	7.00	18046
2	2023	C	7.50	750	8	2022	C	7.00	17978
2	2023	C	8.00	750	8	2022	C	9.00	17390
3	2023	P	4.25	750	7	2022	P	7.00	17304
7	2022	C	10.00	721	10	2022	P	2.00	17258
10	2022	P	6.00	708	7	2022	P	3.25	17194
7	2022	P	7.25	696	1	2023	C	10.00	16649
7	2022	C	9.95	687	3	2023	C	10.00	16493
9	2022	C	9.00	649	10	2022	C	10.00	16424
1	2024	C	3.00	638	10	2022	P	4.00	16368
1	2024	C	4.00	638	8	2022	P	7.00	16222
1	2024	P	2.25	638	10	2023	P	2.00	16105
2	2024	C	3.00	638	9	2022	C	4.00	15970
2	2024	C	4.00	638	7	2022	P	5.50	15899
2	2024	P	2.25	638	2	2023	C	10.00	15486
3	2024	C	3.00	638	9	2022	P	2.50	15292
3	2024	C	4.00	638	7	2022	P	3.50	15279
3	2024	P	2.25	638	10	2022	C	8.00	15048
4	2024	C	3.00	638	7	2022	P	4.50	14947
4	2024	C	4.00	638	7	2022	P	5.00	14910
4	2024	P	2.25	638	9	2022	P	2.75	14883
5	2024	C	3.00	638	12	2022	P	5.00	14646
5	2024	C	4.00	638	9	2022	P	3.00	14601
					8	2022	P	3	14554

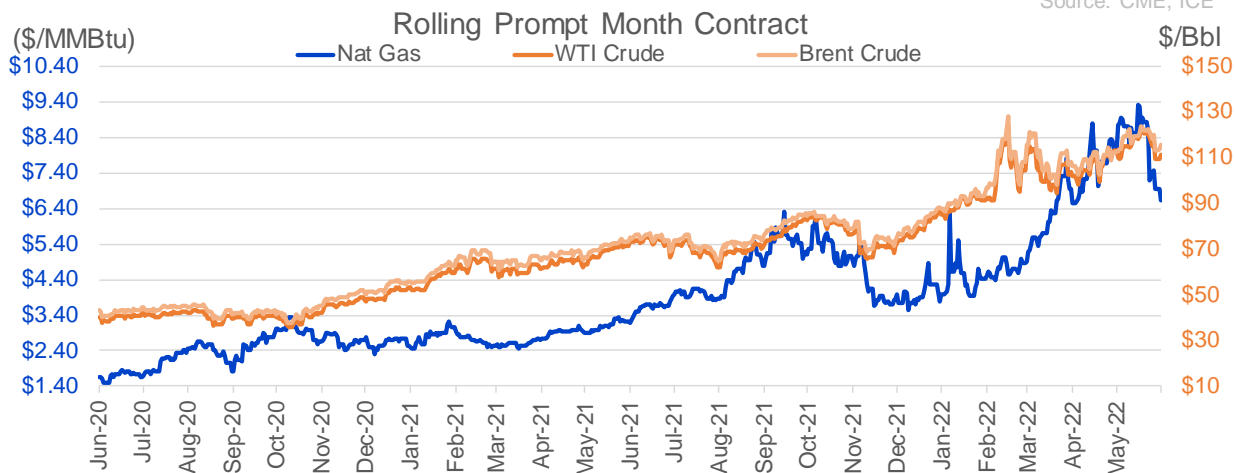
Source: CME, ICE

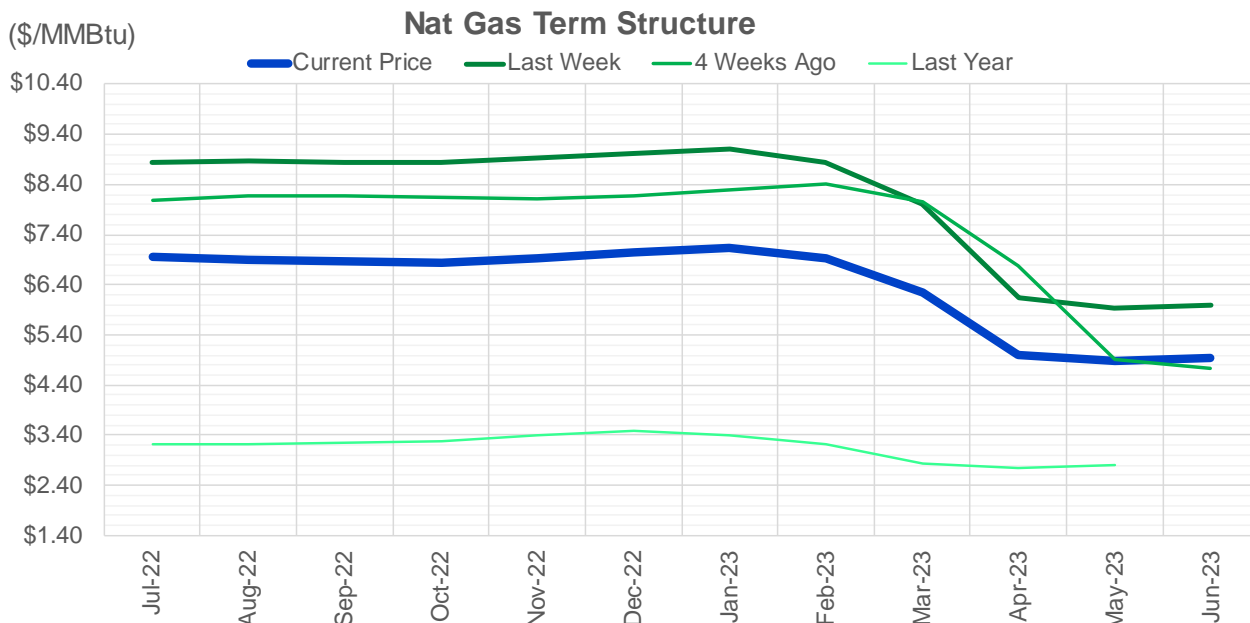
Nat Gas Futures Open Interest

CME and ICE Combined

CME Henry Hub Futures (10,000 MMBtu)				ICE Henry Hub Futures Contract Equivalent (10,000 MM			
	Current	Prior	Daily Change		Current	Prior	Daily Change
JUL 22	45424	51687	-6263	JUL 22	81001	86152	-5151
AUG 22	103435	98724	4711	AUG 22	70456	67059	3397
SEP 22	149847	148907	940	SEP 22	79055	78627	429
OCT 22	98838	98868	-30	OCT 22	72473	72764	-291
NOV 22	54116	52874	1242	NOV 22	59699	59654	45
DEC 22	51949	50705	1244	DEC 22	62118	62133	-15
JAN 23	61972	62038	-66	JAN 23	67661	67593	69
FEB 23	27799	27215	584	FEB 23	54065	53683	382
MAR 23	45961	47012	-1051	MAR 23	53264	53455	-192
APR 23	63265	62849	416	APR 23	51366	52106	-740
MAY 23	62472	61135	1337	MAY 23	51643	51110	533
JUN 23	22893	23546	-653	JUN 23	44910	45078	-168
JUL 23	24140	24224	-84	JUL 23	43901	44010	-109
AUG 23	16306	16055	251	AUG 23	43204	43298	-94
SEP 23	18123	18420	-297	SEP 23	42338	42488	-150
OCT 23	40177	40893	-716	OCT 23	49493	49862	-369
NOV 23	11849	11669	180	NOV 23	43854	43798	56
DEC 23	12302	12348	-46	DEC 23	40129	40032	97
JAN 24	19660	19840	-180	JAN 24	39758	39584	174
FEB 24	6427	6149	278	FEB 24	27566	27157	409
MAR 24	14574	14226	348	MAR 24	32287	32333	-46
APR 24	13246	13446	-200	APR 24	27601	27218	384
MAY 24	6778	6787	-9	MAY 24	26308	26332	-24
JUN 24	2169	2164	5	JUN 24	22333	22449	-116
JUL 24	1946	1964	-18	JUL 24	22536	22525	11
AUG 24	2927	2946	-19	AUG 24	22528	22519	10
SEP 24	1352	1384	-32	SEP 24	22024	22013	11
OCT 24	7181	7198	-17	OCT 24	25005	25052	-47
NOV 24	4508	4525	-17	NOV 24	23304	23305	-1
DEC 24	7093	7111	-18	DEC 24	25416	25421	-5

Source: CME, ICE





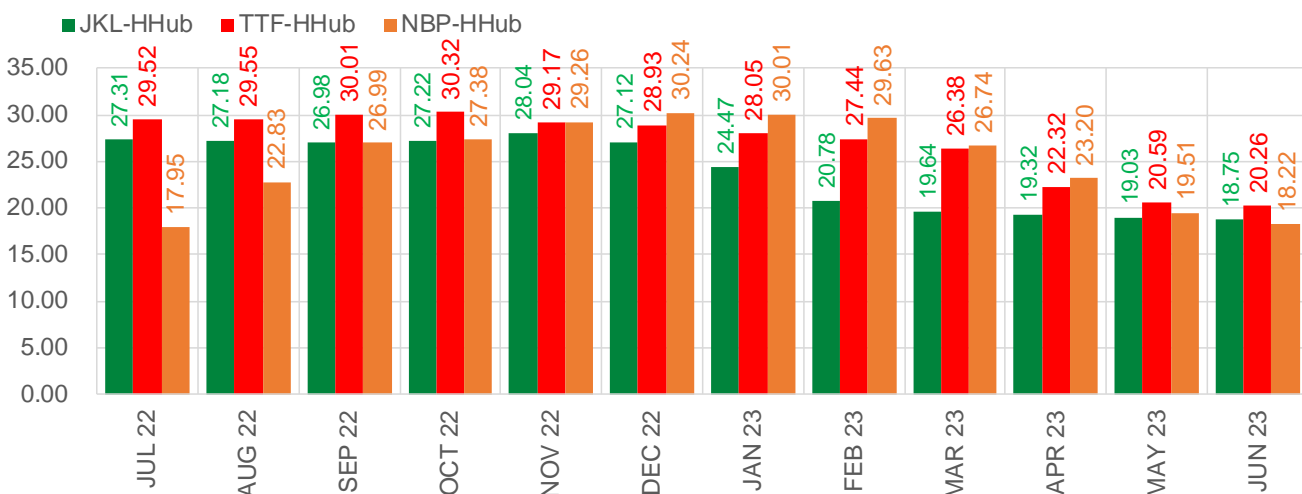
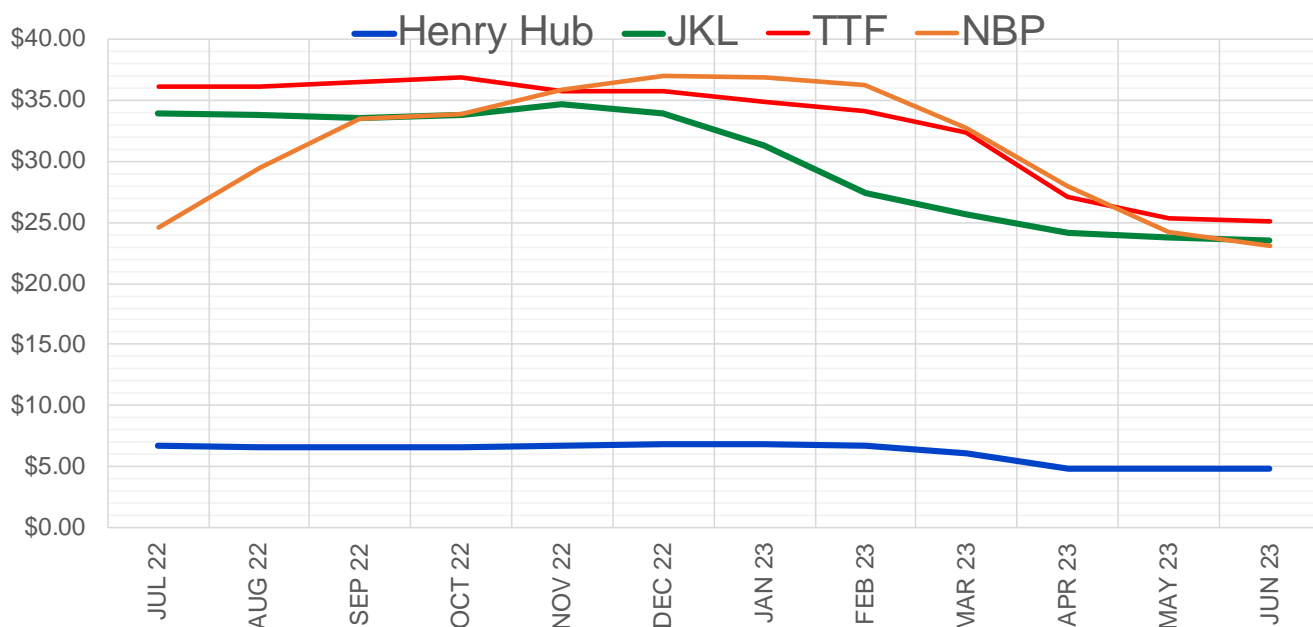
	Jul-22	Aug-22	Sep-22	Oct-22	Nov-22	Dec-22	Jan-23	Feb-23	Mar-23	Apr-23	May-23	Jun-23
Current Price	\$6.944	\$6.906	\$6.861	\$6.850	\$6.940	\$7.055	\$7.146	\$6.916	\$6.235	\$4.998	\$4.894	\$4.954
Last Week	\$8.850	\$8.867	\$8.847	\$8.845	\$8.915	\$9.016	\$9.111	\$8.835	\$8.019	\$6.129	\$5.934	\$5.983
vs. Last Week	-\$1.906	-\$1.961	-\$1.986	-\$1.995	-\$1.975	-\$1.961	-\$1.965	-\$1.919	-\$1.784	-\$1.131	-\$1.040	-\$1.029
4 Weeks Ago	\$8.083	\$8.178	\$8.171	\$8.136	\$8.115	\$8.176	\$8.298	\$8.397	\$8.068	\$6.774	\$4.911	\$4.725
vs. 4 Weeks Ago	-\$1.139	-\$1.272	-\$1.310	-\$1.286	-\$1.175	-\$1.121	-\$1.152	-\$1.481	-\$1.833	-\$1.776	-\$0.017	\$0.229
Last Year	\$3.215	\$3.236	\$3.222	\$3.237	\$3.294	\$3.401	\$3.478	\$3.412	\$3.234	\$2.823	\$2.762	\$2.792
vs. Last Year	\$3.729	\$3.670	\$3.639	\$3.613	\$3.646	\$3.654	\$3.668	\$3.504	\$3.001	\$2.175	\$2.132	\$2.162

	Units	Cash Settled	Prompt Settle	Cash to Prompt
AGT Citygate	\$/MMBtu	7.85	8.34	0.49
TETCO M3	\$/MMBtu	6.39	7.94	1.55
FGT Zone 3	\$/MMBtu	6.44	8.82	2.38
Zone 6 NY	\$/MMBtu	6.44	7.96	1.52
Chicago Citygate	\$/MMBtu	6.92	8.38	1.46
Michcon	\$/MMBtu	6.90	8.28	1.38
Columbia TCO Pool	\$/MMBtu	6.54	7.86	1.32
Ventura	\$/MMBtu	7.70	8.30	0.60
Rockies/Opal	\$/MMBtu	6.57	8.06	1.50
El Paso Permian Basin	\$/MMBtu	6.20	7.89	1.69
Socal Citygate	\$/MMBtu	6.92	9.51	2.59
Malin	\$/MMBtu	6.98	8.41	1.43
Houston Ship Channel	\$/MMBtu	6.82	8.41	1.58
Henry Hub Cash	\$/MMBtu	7.30	8.23	0.93
AECO Cash	C\$/GJ	5.71	5.90	0.19
Station2 Cash	C\$/GJ	5.26	8.08	2.82
Dawn Cash	C\$/GJ	6.93	8.42	1.49

Source: CME, Bloomberg

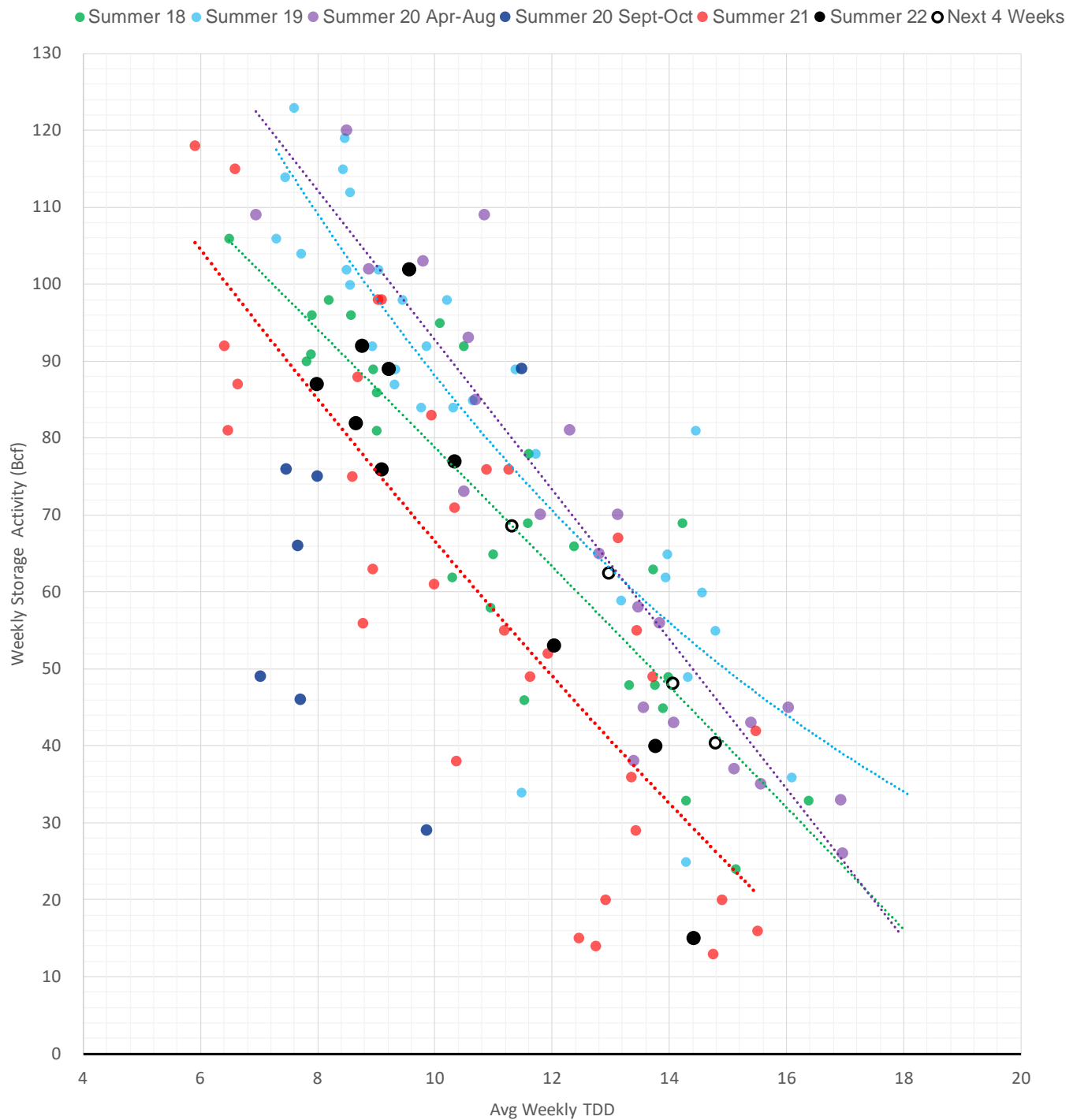
	Units	Current Price	vs. Last Week	vs. 4 Weeks Ago	vs. Last Year
NatGas Jul21/Oct21	\$/MMBtu	2.224	▲ 0.000	▲ 0.000	▲ 2.198
NatGas Oct21/Nov21	\$/MMBtu	0.361	▲ 0.000	▲ 0.000	▲ 0.301
NatGas Oct21/Jan22	\$/MMBtu	-1.817	▲ 0.000	▲ 0.000	▼ -2.063
NatGas Apr22/Oct22	\$/MMBtu	1.514	▼ -1.734	▼ -1.885	▲ 1.481
WTI Crude	\$/Bbl	109.56	▼ -11.370	▼ -0.730	▲ 35.900
Brent Crude	\$/Bbl	114.13	▼ -8.140	▲ 0.710	▲ 39.230
Fuel Oil, NY Harbour 1%	\$/Bbl	97.18	▲ 0.000	▲ 0.000	▲ 0.000
Heating Oil	cents/Gallon	433.98	▲ 5.640	▲ 57.100	▲ 221.300
Propane, Mt. Bel	cents/Gallon	1.21	▼ -0.014	▼ -0.020	▲ 0.254
Ethane, Mt. Bel	cents/Gallon	0.64	▼ -0.034	▲ 0.037	▲ 0.362
Coal, PRB	\$/MTon	12.30	▲ 0.000	▲ 0.000	▲ 0.000
Coal, PRB	\$/MMBtu	0.70			
Coal, ILB	\$/MTon	31.05	▲ 0.000	▲ 0.000	▲ 0.000
Coal, ILB	\$/MMBtu	1.32			

Nat Gas Term Structure (\$MMBTU)



	JUL 22	AUG 22	SEP 22	OCT 22	NOV 22	DEC 22	JAN 23	FEB 23	MAR 23	APR 23	MAY 23	JUN 23
Henry Hub	\$6.646	\$6.621	\$6.584	\$6.571	\$6.667	\$6.805	\$6.872	\$6.665	\$6.019	\$4.850	\$4.747	\$4.811
JKL	\$33.955	\$33.805	\$33.560	\$33.790	\$34.705	\$33.920	\$31.340	\$27.445	\$25.655	\$24.165	\$23.780	\$23.560
JKL-HHub	\$27.309	\$27.184	\$26.976	\$27.219	\$28.038	\$27.115	\$24.468	\$20.780	\$19.636	\$19.315	\$19.033	\$18.749
TTF	\$36.169	\$36.174	\$36.592	\$36.893	\$35.840	\$35.738	\$34.920	\$34.109	\$32.394	\$27.170	\$25.335	\$25.070
TTF-HHub	\$29.523	\$29.553	\$30.008	\$30.322	\$29.173	\$28.933	\$28.048	\$27.444	\$26.375	\$22.320	\$20.588	\$20.259
NBP	\$24.592	\$29.450	\$33.578	\$33.948	\$35.923	\$37.045	\$36.879	\$36.292	\$32.755	\$28.050	\$24.261	\$23.035
NBP-HHub	\$17.946	\$22.829	\$26.994	\$27.377	\$29.256	\$30.240	\$30.007	\$29.627	\$26.736	\$23.200	\$19.514	\$18.224

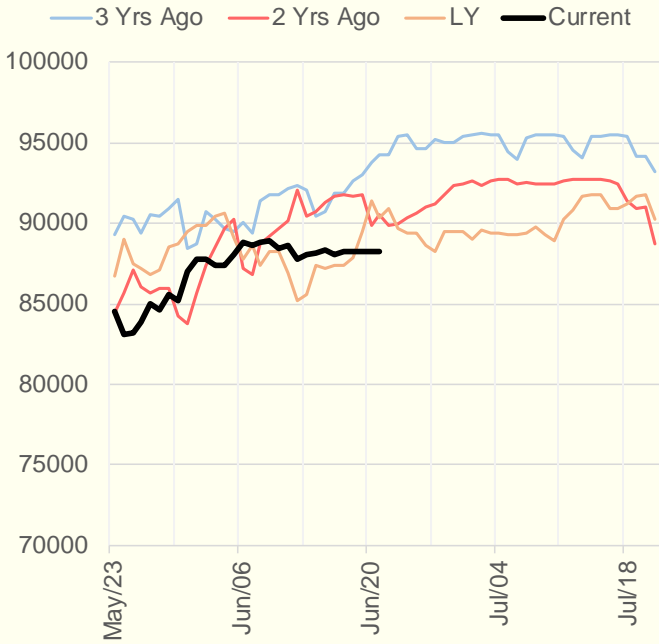
Weather Storage Model - Next 4 Week Forecast



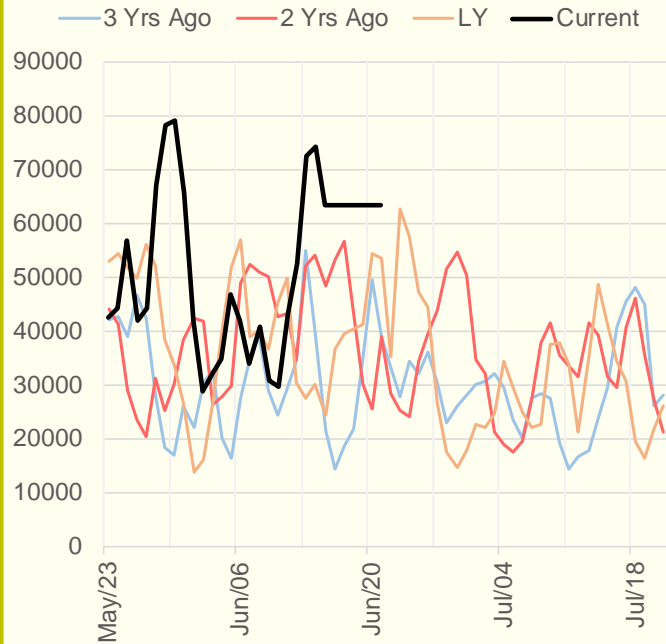
The risk of trading futures and options and other derivatives involves a substantial risk of loss and is not suitable for all persons. Each person must consider whether a particular trade, combination of trades, or strategy is suitable for that person's financial means and objectives. Past results are not necessarily indicative of future results. This communication may contain links to third party websites which are not under the control of and are not maintained by ION Energy Group, and ION Energy Group is not responsible for their content.

95.3

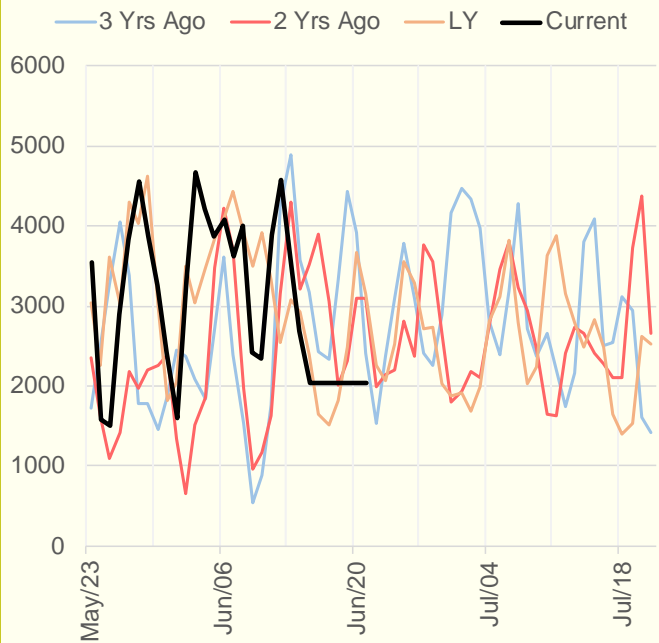
NRC Nuclear Daily Output



US Wind



CALI Wind



TEXAS Wind

