

	Current	Δ from YD	Δ from 7D Avg
Nat Gas Prompt	\$ 6.73	▼ \$ (0.08)	▼ \$ (0.34)

	Current	Δ from YD	Δ from 7D Avg
WTI Prompt	\$ 103.72	▼ \$ (6.93)	▼ \$ (8.0)

	Current	Δ from YD	Δ from 7D Avg
Brent Prompt	\$ 109.24	▼ \$ (5.41)	▼ \$ (6.0)

Page Menu

[Short-term Weather Model Outlooks](#)

[Lower 48 Component Models](#)

[Regional S/D Models Storage Projection](#)

[Weather Model Storage Projection](#)

[Supply – Demand Trends](#)

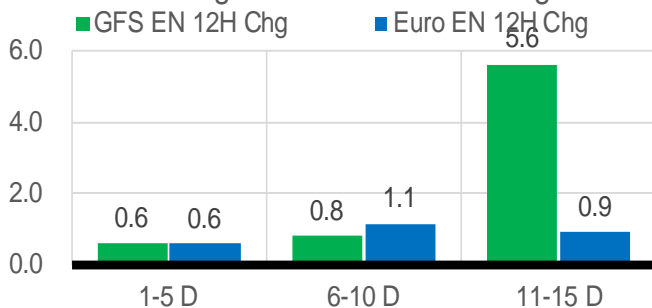
[Nat Gas Options Volume and Open Interest](#)

[Nat Gas Futures Open Interest](#)

[Price Summary](#)

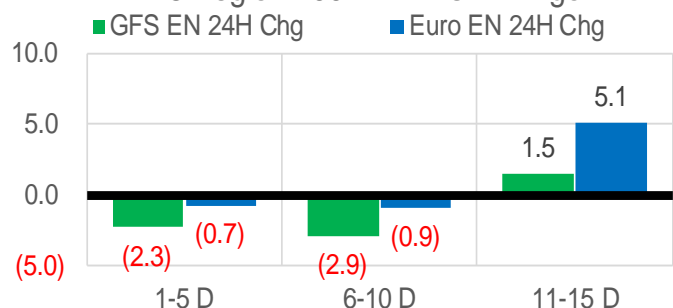
Vs. 12H Ago

L48 Region - 00z TDD vs 12H Ago



Vs. 24H Ago

L48 Region - 00z TDD vs 24H Ago



	Current	Δ from YD	Δ from 7D Avg
US Dry Production	96.1	▼ -0.10	▲ 0.07

	Current	Δ from YD	Δ from 7D Avg
US Power Burns	38.1	▼ -0.45	▲ 0.71

	Current	Δ from YD	Δ from 7D Avg
US ResComm	8.2	▼ -0.29	▼ -0.31

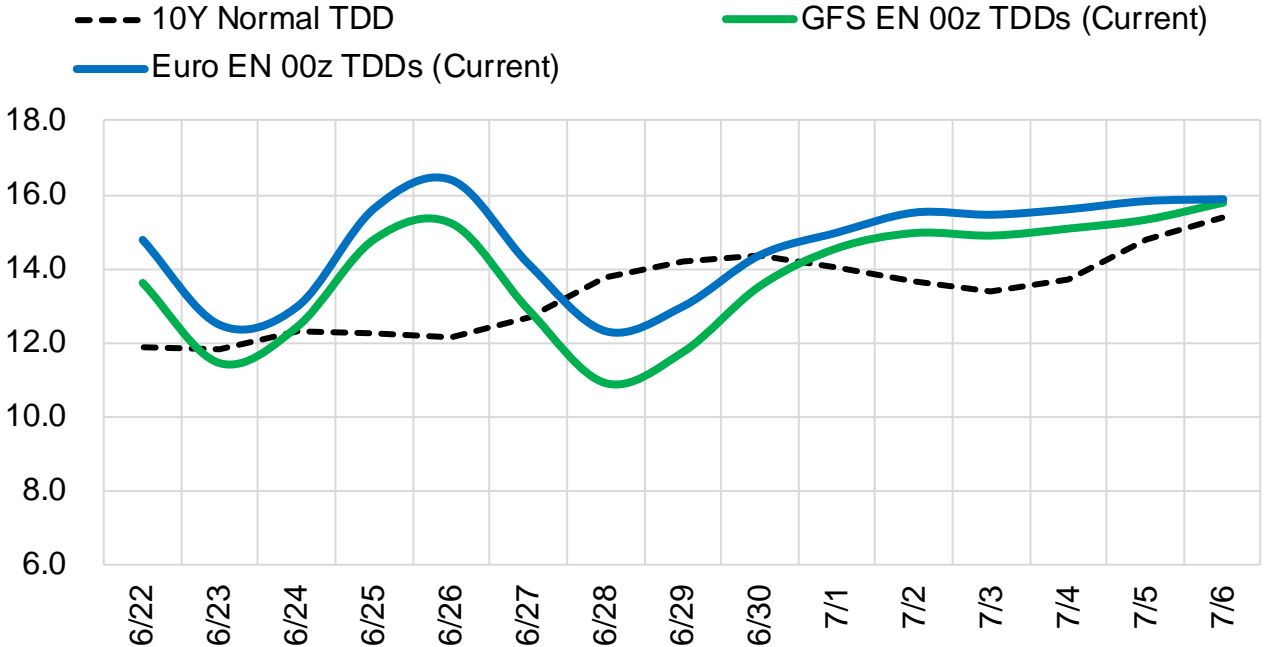
	Current	Δ from YD	Δ from 7D Avg
Canadian Imports	5.6	▲ 0.02	▼ -0.16

	Current	Δ from YD	Δ from 7D Avg
Net LNG Exports	10.4	▼ -0.37	▼ -0.34

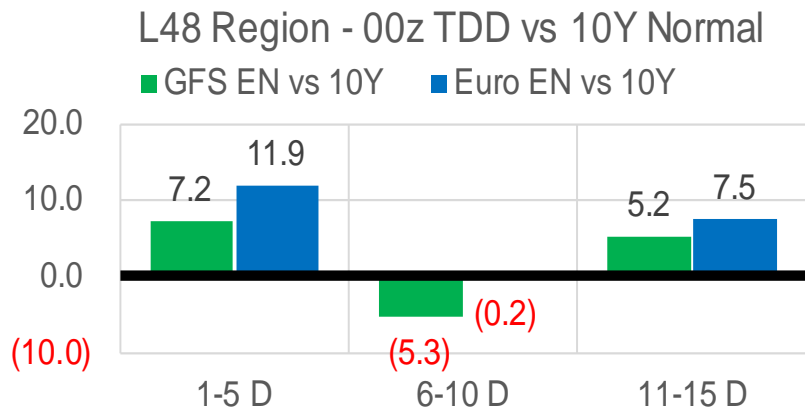
	Current	Δ from YD	Δ from 7D Avg
Mexican Exports	7.1	▲ 0.01	▲ 0.05

Short-term Weather Model Outlooks (00z)

L48 Region



Vs. 10Y Normal



Source: WSI , Bloomberg

Lower 48 Component Models

Daily Balances

	16-Jun	17-Jun	18-Jun	19-Jun	20-Jun	21-Jun	22-Jun	DoD	vs. 7D
Lower 48 Dry Production	96.2	95.7	95.9	96.0	96.0	96.2	96.1	▼ -0.1	▲ 0.1
Canadian Imports	6.3	5.8	5.4	5.4	5.6	5.6	5.6	▲ 0.0	▼ -0.1
L48 Power	41.1	40.1	33.1	31.2	35.2	38.5	38.1	▼ -0.4	▲ 1.5
L48 Residential & Commercial	8.3	8.6	8.5	8.6	8.2	8.5	8.2	▼ -0.3	▼ -0.3
L48 Industrial	22.1	22.0	21.8	21.7	21.7	21.3	21.2	▼ -0.1	▼ -0.6
L48 Lease and Plant Fuel	5.2	5.2	5.2	5.2	5.2	5.2	5.2	▼ -0.1	▼ 0.0
L48 Pipeline Distribution	2.7	2.7	2.3	2.2	2.4	2.6	2.5	▼ 0.0	▲ 0.1
L48 Regional Gas Consumption	79.4	78.5	70.9	68.9	72.7	76.1	75.1	▼ -1.0	▲ 0.7
Net LNG Delivered	10.93	10.92	10.63	10.58	10.75	10.75	10.38	▼ -0.4	▼ -0.4
Total Mexican Exports	7.2	7.0	6.7	6.8	7.0	7.1	7.1	▲ 0.0	▲ 0.1
Implied Daily Storage Activity	4.9	5.0	13.0	15.1	11.2	7.8	9.1		
EIA Reported Daily Storage Activity									
Daily Model Error									

EIA Storage Week Balances

	13-May	20-May	27-May	3-Jun	10-Jun	17-Jun	WoW	vs. 4W
Lower 48 Dry Production	96.2	95.3	96.3	97.0	96.4	95.9	▼ -0.5	▼ -0.4
Canadian Imports	5.2	4.9	4.9	4.8	5.4	6.1	▲ 0.6	▲ 1.1
L48 Power	26.8	30.4	30.0	30.4	32.3	37.8	▲ 5.4	▲ 7.0
L48 Residential & Commercial	14.5	10.0	11.6	9.1	8.6	8.3	▼ -0.3	▼ -1.5
L48 Industrial	20.9	21.3	20.2	21.5	21.4	22.3	▲ 0.8	▲ 1.1
L48 Lease and Plant Fuel	5.2	5.1	5.2	5.2	5.2	5.2	▼ 0.0	▼ 0.0
L48 Pipeline Distribution	2.3	2.3	2.4	2.2	2.2	2.5	▲ 0.3	▲ 0.2
L48 Regional Gas Consumption	69.6	69.1	69.4	68.4	69.8	76.0	▲ 6.2	▲ 6.8
Net LNG Exports	12.2	12.2	13.0	12.8	12.3	10.7	▼ -1.6	▼ -1.9
Total Mexican Exports	7.0	7.0	7.0	7.1	7.1	7.2	▲ 0.1	▲ 0.1
Implied Daily Storage Activity	12.5	11.9	11.6	13.5	12.6	8.1	-4.5	
EIA Reported Daily Storage Activity	12.7	12.4	11.7	14.6	13.1			
Daily Model Error	-0.2	-0.5	-0.1	-1.0	-0.5			

Monthly Balances

	2Yr Ago Jun-20	LY Jun-21	Feb-22	Mar-22	Apr-22	May-22	MTD Jun-22	MoM	vs. LY
Lower 48 Dry Production	87.9	93.2	92.7	93.5	96.0	96.1	96.2	▲ 0.1	▲ 3.0
Canadian Imports	4.0	4.8	6.5	5.2	5.8	5.1	5.6	▲ 0.5	▲ 0.8
L48 Power	34.9	35.9	28.7	25.5	24.7	28.8	35.1	▲ 6.3	▼ -0.8
L48 Residential & Commercial	8.8	8.9	43.3	31.5	22.5	12.3	8.5	▼ -3.8	▼ -0.3
L48 Industrial	20.0	20.2	22.1	19.7	21.4	20.9	21.8	▲ 0.9	▲ 1.6
L48 Lease and Plant Fuel	4.8	5.0	5.1	5.2	5.2	5.2	5.2	▲ 0.0	▲ 0.2
L48 Pipeline Distribution	2.3	2.4	3.5	2.9	2.6	2.3	2.4	▲ 0.0	▼ -0.1
L48 Regional Gas Consumption	70.8	72.5	102.7	84.7	76.4	69.5	73.0	▲ 3.5	▲ 0.5
Net LNG Exports	4.0	10.2	12.4	12.9	12.3	12.5	11.4	▼ -1.1	▲ 1.3
Total Mexican Exports	5.5	7.4	6.2	6.5	6.7	7.0	7.1	▲ 0.1	▼ -0.3
Implied Daily Storage Activity	11.5	8.0	-22.1	-5.4	6.3	12.2	10.3		
EIA Reported Daily Storage Activity									
Daily Model Error									

Source: Bloomberg, analytix.ai

Daily Average Generation Data

Nuclear Generation Daily Average - GWh (NRC)

	14-Jun	15-Jun	16-Jun	17-Jun	18-Jun	19-Jun	20-Jun	DoD	vs. 7D
NRC Nuclear Daily Output	88.2	88.3	88.0	88.3	88.1	88.3	88.7	0.4	0.5
NRC Nuclear Max Capacity	104.9	104.9	104.9	104.9	104.9	104.9	104.9	0.0	0.0
NRC Nuclear Outage	16.7	16.6	16.8	16.6	16.8	16.6	16.2	-0.4	-0.5
NRC % Nuclear Cap Utilization	89.6	89.8	89.5	89.8	89.6	89.8	90.2	0.4	0.5

Wind Generation Daily Average - MWh (EIA)

	14-Jun	15-Jun	16-Jun	17-Jun	18-Jun	19-Jun	20-Jun	DoD	vs. 7D
CALI Wind	2694	2048	2048	2048	2048	2048	2048	0	-108
TEXAS Wind	23941	22879	22879	22879	22879	22879	22879	0	-177
US Wind	74489	63443	63443	63443	63443	63443	63443	0	-1841

Generation Daily Average - MWh (EIA)

	14-Jun	15-Jun	16-Jun	17-Jun	18-Jun	19-Jun	20-Jun	DoD	vs. 7D
US Wind	74489	63443	63443	63443	63443	63443	63443	0	-1841
US Solar	17585	19728	19728	19728	19728	19728	19728	0	357
US Petroleum	1189	1333	1333	1333	1333	1333	1333	0	24
US Other	8941	9775	9775	9775	9775	9775	9775	0	139
US Coal	112895	119543	119543	119543	119543	119543	119543	0	1108
US Nuke	91249	90696	90696	90696	90696	90696	90696	0	-92
US Hydro	36722	39690	39690	39690	39690	39690	39690	0	495
US Gas	210108	220700	220700	220700	220700	220700	220700	0	1765

See National Wind and Nuclear daily charts

Source: Bloomberg, analytix.ai

Storage Week Average Generation Data

Nuclear Generation Weekly Average - GWh (NRC)

	13-May	20-May	27-May	3-Jun	10-Jun	17-Jun	WoW	WoW Bcf/d Impact
NRC Nuclear Daily Output	79.3	81.7	84.2	86.2	88.3	88.2	-0.1	0.0
NRC Nuclear Max Capacity	104.9	104.9	104.9	104.9	104.9	104.9	0.0	
NRC Nuclear Outage	25.5	23.2	20.6	18.7	16.6	16.7	0.1	
NRC % Nuclear Cap Utilization	80.7	83.1	85.7	87.6	89.8	89.7	-0.1	

Wind Generation Weekly Average - MWh (EIA)

	13-May	20-May	27-May	3-Jun	10-Jun	17-Jun	WoW	WoW Bcf/d Impact
CALI Wind	3983	3452	2798	3268	3842	3032	-810	0.1
TEXAS Wind	17705	15706	14010	17915	12449	20462	8012	-1.4
US Wind	64974	50251	50129	57939	37417	57090	19673	-3.5
							53%	
						0.6		

Generation Weekly Average - MWh (EIA)

	13-May	20-May	27-May	3-Jun	10-Jun	17-Jun	WoW	WoW Bcf/d Impact
US Wind	64974	50251	50129	57939	37417	57090	19673	-3.5
US Solar	18000	19634	17534	18656	18807	18731	-75	0.0
US Petroleum	341	262	448	863	968	1244	276	0.0
US Other	7615	7871	7684	7866	8001	8688	687	-0.1
US Coal	81273	88922	88570	89706	95415	106566	11150	-2.0
US Nuke	83391	85510	88016	89728	91641	91235	-406	0.1
US Hydro	28968	31973	33772	35051	36328	37495	1167	-0.2
US Gas	148473	172224	160070	163383	178204	201845	23641	4.3

See National Wind and Nuclear daily charts

Source: Bloomberg, analytix.ai

Monthly Average Generation Data

Nuclear Generation Monthly Average - GWh (NRC)

	2Yr Ago	LY	MTD				Last 30 days	MoM (MTD vs LY)	Last 30 days YoY
	Same 30 days	Same 30 days	Mar-22	Apr-22	May-22	Jun-22			
	NRC Nuclear Daily Output	88.7	88.4	81.3	73.3	81.7			
NRC Nuclear Max Capacity	104.9	104.9	104.9	104.9	104.9	104.9	104.9	0.0	0.0
NRC Nuclear Outage	16.2	16.5	23.6	31.6	23.2	16.6	17.6	-6.6	1.1
NRC % Nuclear Cap Utilization	90.2	89.9	82.7	74.5	83.0	89.7	88.8	6.7	-1.1

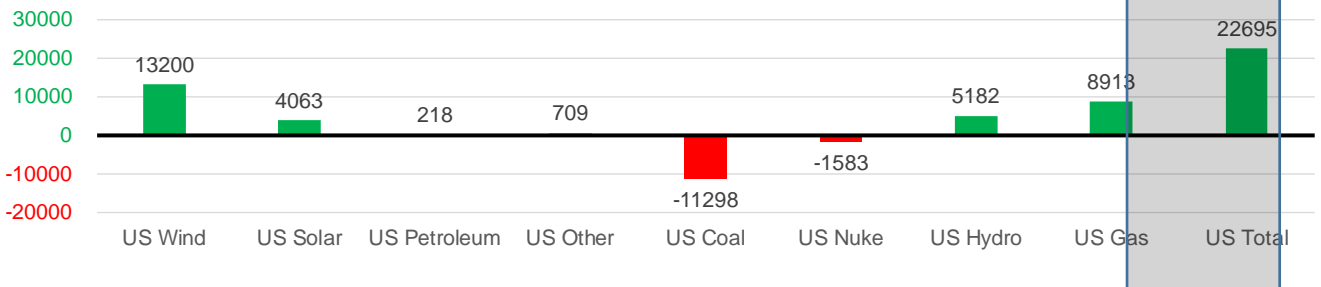
Wind Generation Monthly Average - MWh (EIA)

	2Yr Ago	LY	MTD				Last 30 days	MoM (MTD vs LY)	Last 30 days YoY
	Same 30 days	Same 30 days	Mar-22	Apr-22	May-22	Jun-22			
	CALI Wind	2376	3109	2250	3186	3361			
TEXAS Wind	10037	10091	14837	16311	16756	17688	17562	932	7471
US Wind	38749	39830	58528	64183	56462	50586	53029	-5876	13200

Generation Monthly Average - MWh (EIA)

	2Yr Ago	LY	MTD				Last 30 days	MoM (MTD vs LY)	Last 30 days YoY
	Same 30 days	Same 30 days	Mar-22	Apr-22	May-22	Jun-22			
	US Wind	38749	39830	58528	64183	56462			
US Solar	11470	14744	14061	16296	18186	19030	18807	▼ -223.8	▲ 4063
US Petroleum	632	809	985	985	518	1158	1027	▼ -131	▲ 218
US Other	8151	7706	7206	7386	7724	8710	8415	▼ -295	▲ 709
US Coal	85067	111889	82290	77545	85273	106129	100591	▼ -5539	▼ -11298
US Nuke	92321	92055	85256	77217	85496	91210	90472	▼ -738	▼ -1583
US Hydro	37867	31746	33959	29022	31369	37594	36928	▼ -666	▲ 5182
US Gas	175326	177791	137232	133068	157565	198838	186704	▼ -5149	▲ 8913
US Total	448275	476920	419838	406223	443965	517218	499615	▼ -12741	▲ 22695

Last 30 days YoY



See National Wind and Nuclear daily charts

Source: Bloomberg, analytix.ai

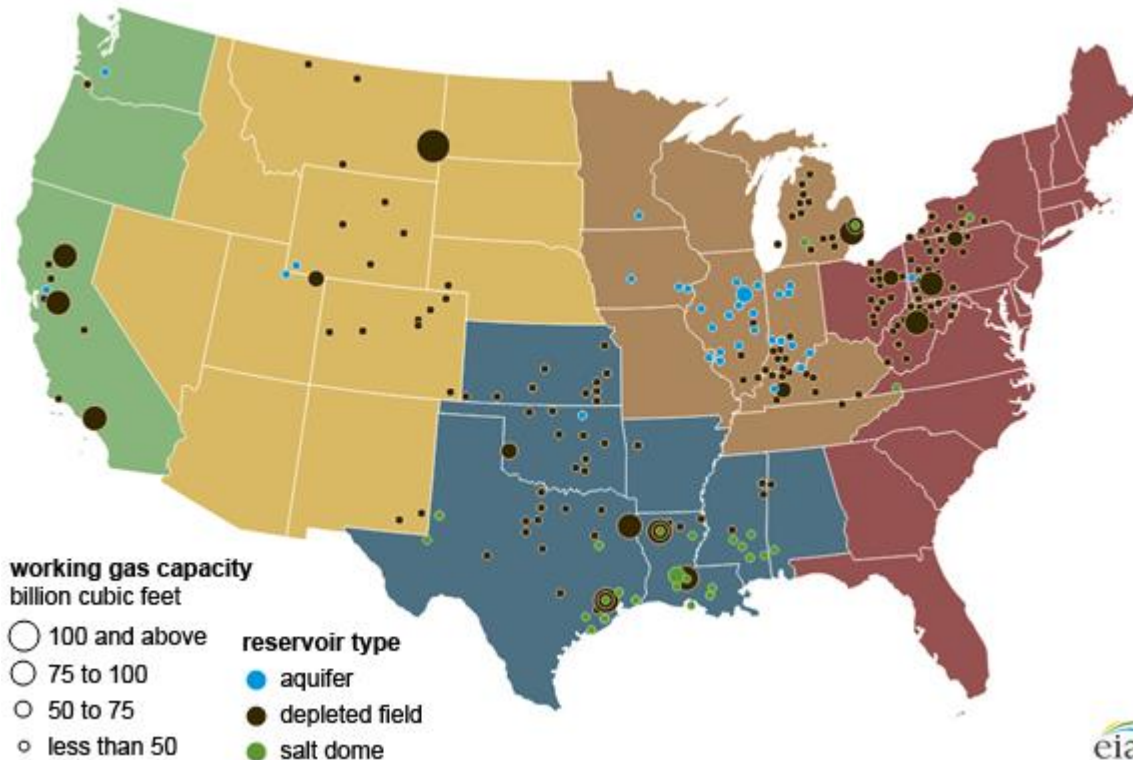
Regional S/D Models Storage Projection

Week Ending 17-Jun

	Daily Raw Storage	Daily Adjustment Factor	Daily Average Storage Activity (Adjusted) *	Weekly Adjusted Storage Activity
L48	9.2	-0.3	8.9	62
East	1.6	1.7	3.3	23
Midwest	4.3	-1.1	3.2	22
Mountain	4.6	-3.9	0.7	5
South Central	-3.3	3.8	0.5	4
Pacific	2.0	-0.8	1.2	8

*Adjustment Factor is calculated based on historical regional deltas

U.S. underground natural gas storage facilities by type (July 2015)

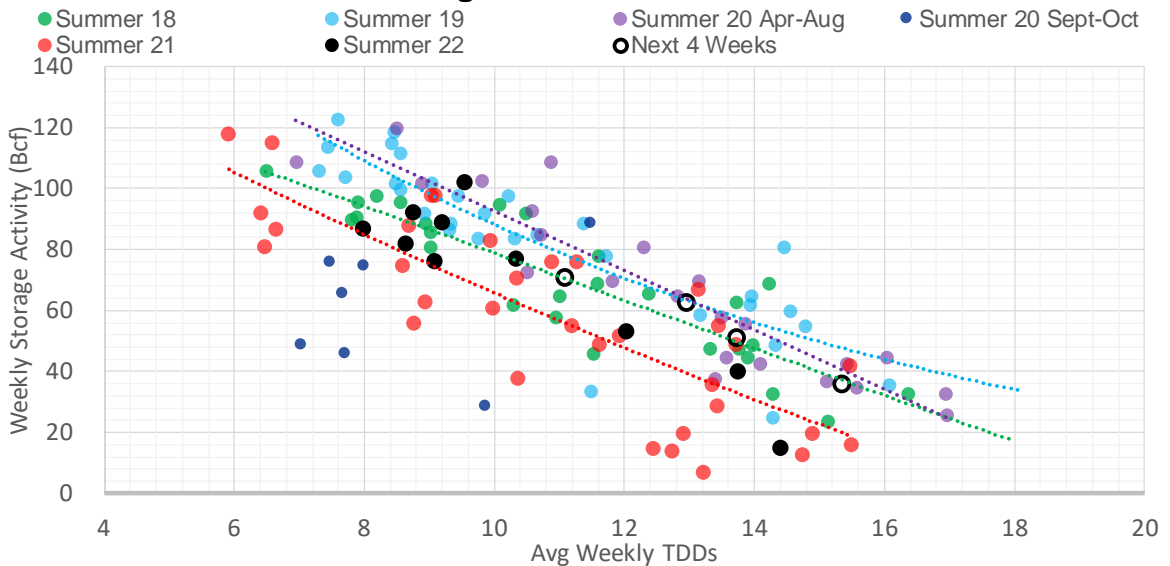


Weather Model Storage Projection

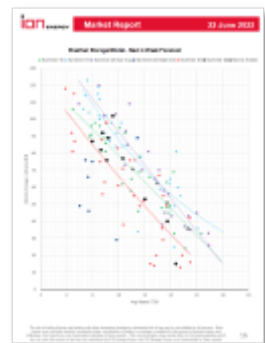
Next report
and beyond

Week Ending	GWDDs	Week Storage Projection
17-Jun	13	62
24-Jun	11	70
01-Jul	14	51
08-Jul	15	35

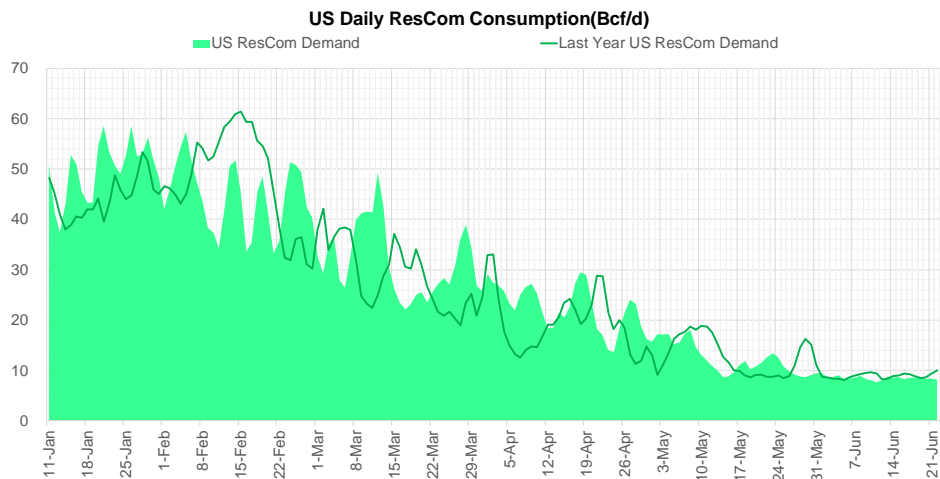
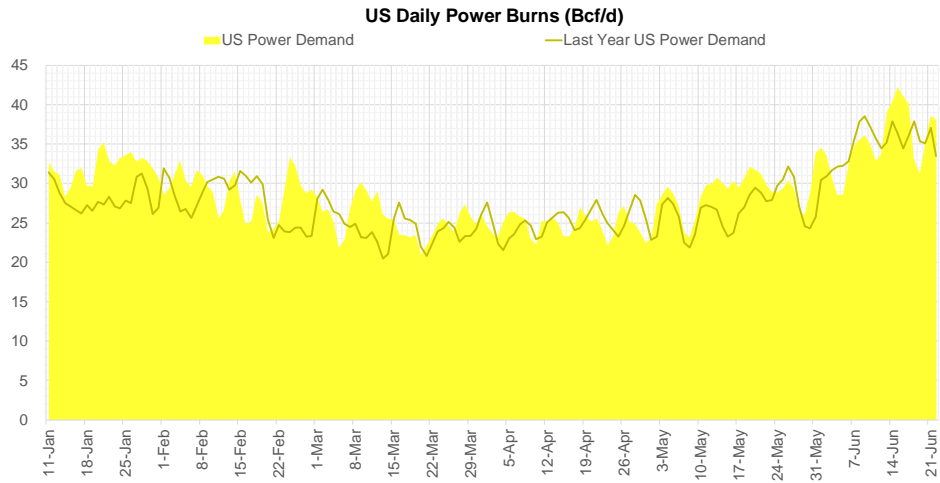
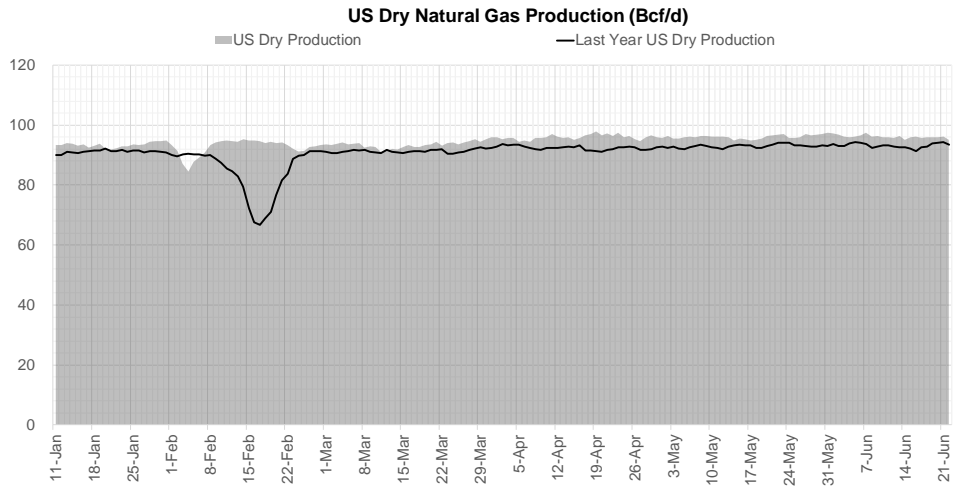
Weather Storage Model - Next 4 Week Forecast



[Go to larger image](#)



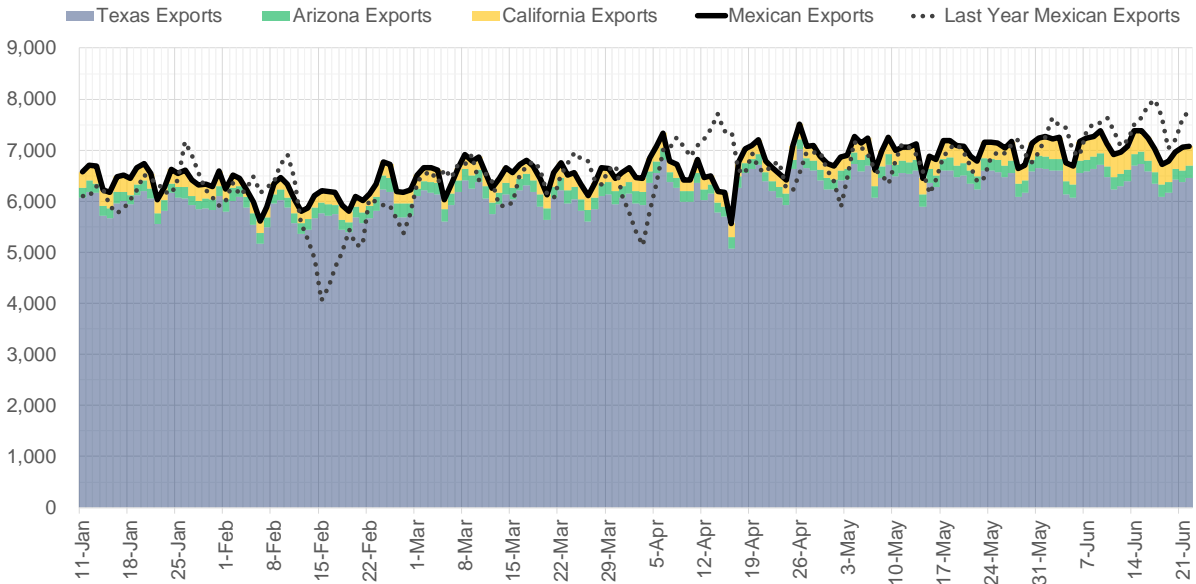
Supply – Demand Trends



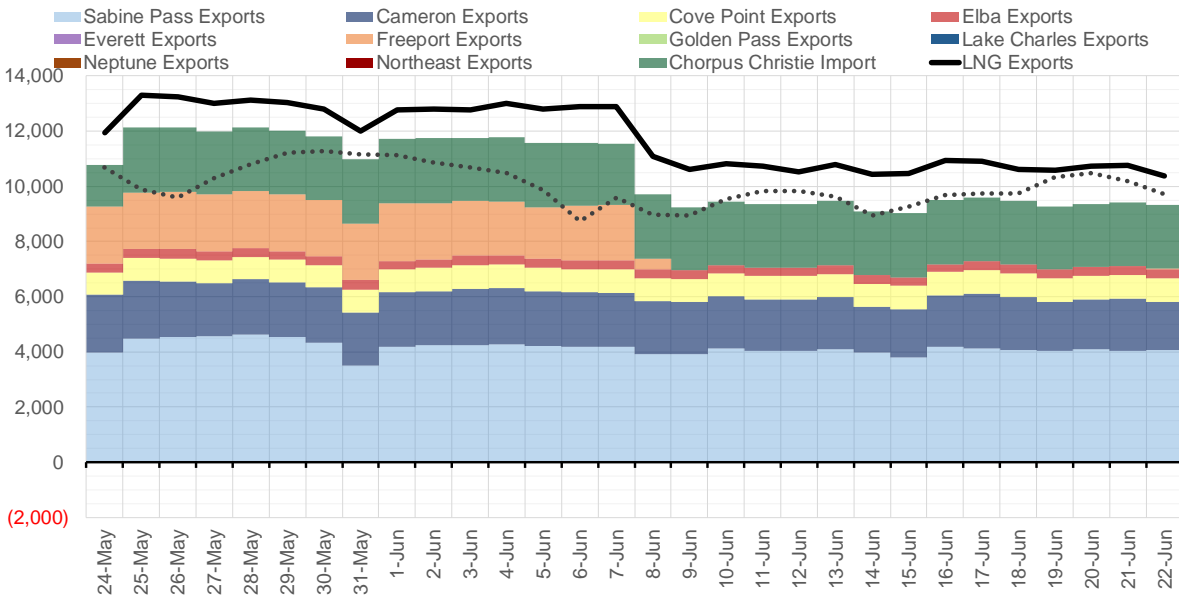
Source: Bloomberg

The risk of trading futures and options and other derivatives involves a substantial risk of loss and is not suitable for all persons. Each person must consider whether a particular trade, combination of trades, or strategy is suitable for that person's financial means and objectives. Past results are not necessarily indicative of future results. This communication may contain links to third party websites which are not under the control of and are not maintained by ION Energy Group, and ION Energy Group is not responsible for their content.

Mexican Exports (MMcf/d)



Net LNG Exports - Last 30 days (MMcf/d)



Source: Bloomberg

The risk of trading futures and options and other derivatives involves a substantial risk of loss and is not suitable for all persons. Each person must consider whether a particular trade, combination of trades, or strategy is suitable for that person's financial means and objectives. Past results are not necessarily indicative of future results. This communication may contain links to third party websites which are not under the control of and are not maintained by ION Energy Group, and ION Energy Group is not responsible for their content.

Nat Gas Options Volume and Open Interest CME and ICE Combined

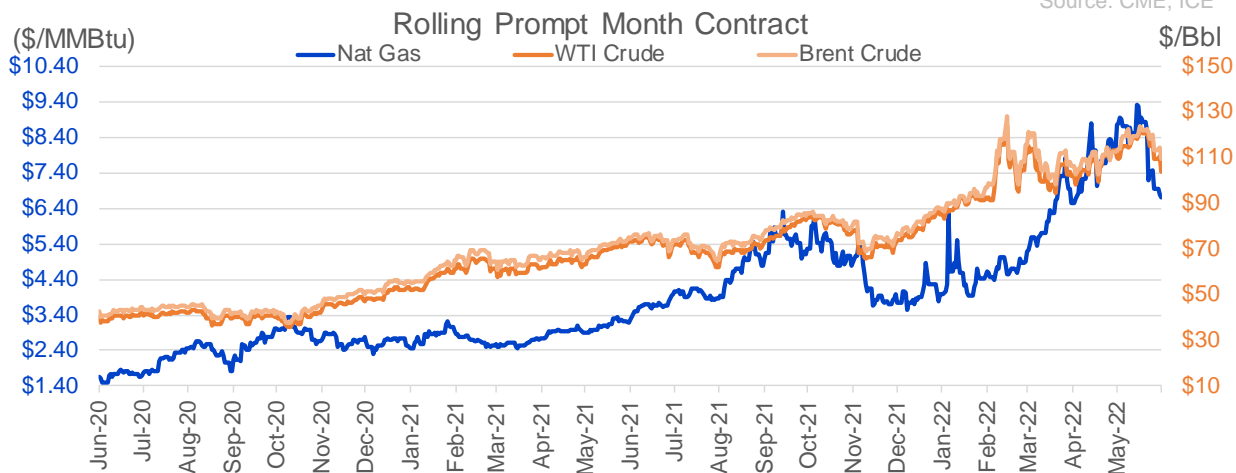
CONTRACT MONTH	CONTRACT YEAR	PUT/CALL	STRIKE	CUMULATIVE VOL	CONTRACT MONTH	CONTRACT YEAR	PUT/CALL	STRIKE	CUMULATIVE OI
2	2023	C	10.00	4695	8	2022	C	10.00	44966
8	2022	C	10.00	4155	7	2022	C	11.00	41655
7	2022	C	8.00	3617	8	2022	C	12.00	36725
8	2022	C	10.50	3554	10	2022	C	6.00	35484
1	2023	C	10.00	3200	8	2022	C	10.50	30411
3	2023	C	10.00	3195	10	2022	P	6.00	23910
2	2023	C	7.50	3001	7	2022	C	10.00	23779
1	2023	C	7.50	3000	9	2022	C	6.00	23690
3	2023	C	7.50	3000	10	2022	C	5.00	23569
7	2022	C	7.50	2247	7	2022	C	9.50	23412
7	2022	P	6.00	2008	7	2022	P	6.00	23235
7	2022	C	7.00	1965	7	2022	C	9.00	22905
10	2022	C	10.00	1553	8	2022	C	12.10	22004
10	2022	C	15.00	1550	10	2022	P	3.00	21686
10	2022	C	8.00	1504	8	2022	P	6.00	21365
2	2023	C	9.00	1500	9	2022	C	10.00	20974
9	2022	C	8.00	1469	10	2022	P	3.50	20652
10	2022	C	6.75	1221	7	2022	C	11.10	20511
10	2022	P	6.75	1220	10	2022	P	2.50	19870
8	2022	C	7.50	1130	8	2022	C	6.00	19642
7	2022	P	6.50	1113	5	2023	P	2.00	19402
7	2022	P	5.75	1102	9	2022	P	4.00	19391
7	2022	C	7.25	1098	7	2022	C	6.00	18915
8	2022	P	7.00	1094	7	2022	C	7.00	18871
7	2022	P	6.25	1088	7	2022	C	8.00	18813
8	2022	C	8.00	1059	12	2022	C	5.00	18221
7	2022	C	6.75	1012	9	2022	C	7.00	18096
8	2022	P	6.00	908	8	2022	C	7.00	18052
7	2022	C	8.50	870	8	2022	C	9.00	17411
8	2022	C	12.00	818	10	2022	P	2.00	17258
10	2022	C	9.00	804	7	2022	P	3.25	17194
7	2022	C	9.00	790	7	2022	P	7.00	17155
9	2022	C	10.50	775	10	2022	C	10.00	16771
7	2022	P	6.75	769	10	2022	P	4.00	16553
10	2022	P	4.00	711	7	2022	P	5.50	16380
9	2022	C	9.50	679	3	2023	C	10.00	16348
1	2023	C	12.00	627	8	2022	P	7.00	16287
8	2022	C	20.00	616	10	2023	P	2.00	16105
7	2022	C	8.25	547	9	2022	C	4.00	15970
8	2022	C	14.00	545	2	2023	C	10.00	15916
8	2022	C	11.00	543	1	2023	C	10.00	15303
7	2022	C	9.25	532	9	2022	P	2.50	15292
10	2022	P	5.00	508	7	2022	P	3.50	15279
8	2022	C	7.10	503	7	2022	P	5.00	15080
8	2022	P	6.60	502	9	2022	P	2.75	14883
8	2022	P	7.50	502	7	2022	P	4.50	14843
1	2023	C	14.00	500	12	2022	P	5.00	14645
1	2023	P	4.00	500	9	2022	P	3.00	14625
2	2023	C	12.00	500	10	2022	C	8.00	14561
					8	2022	P	3	14554

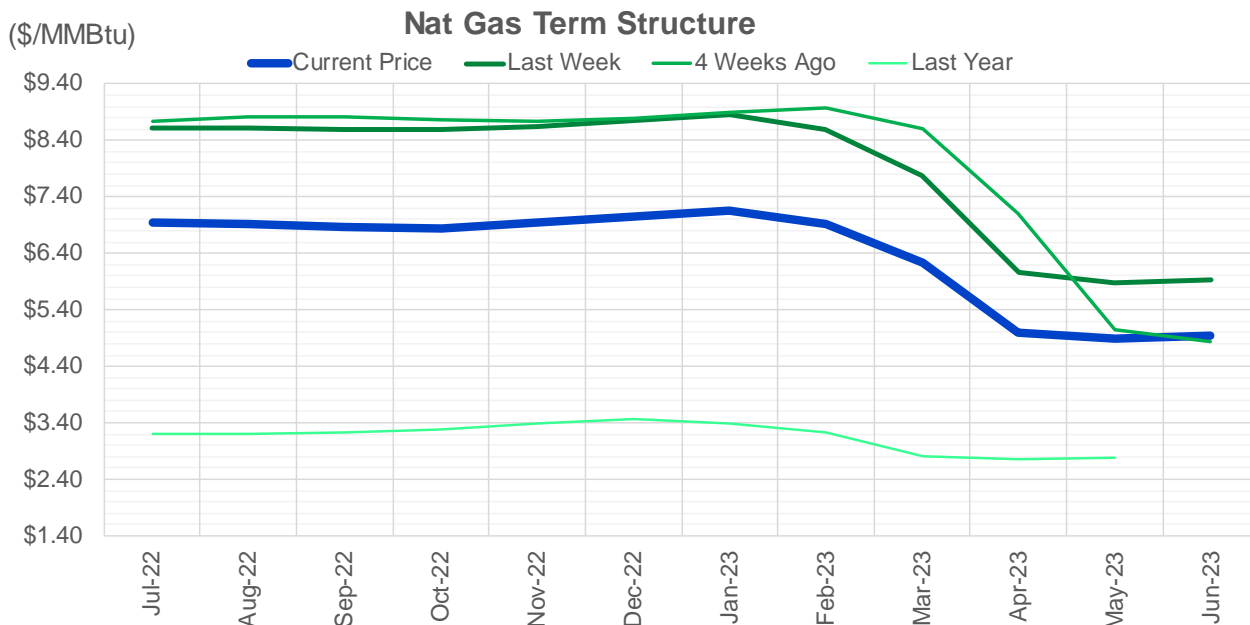
Source: CME, ICE

Nat Gas Futures Open Interest CME and ICE Combined

CME Henry Hub Futures (10,000 MMBtu)				ICE Henry Hub Futures Contract Equivalent (10,000 MM			
	Current	Prior	Daily Change		Current	Prior	Daily Change
JUL 22	37297	45424	-8127	JUL 22	77534	81001	-3467
AUG 22	107400	103435	3965	AUG 22	71991	70456	1535
SEP 22	147779	149847	-2068	SEP 22	78276	79055	-780
OCT 22	97919	98838	-919	OCT 22	73061	72473	588
NOV 22	53987	54116	-129	NOV 22	58888	59699	-811
DEC 22	50649	51949	-1300	DEC 22	62020	62118	-98
JAN 23	61795	61972	-177	JAN 23	66915	67661	-746
FEB 23	28405	27799	606	FEB 23	53952	54065	-113
MAR 23	45874	45961	-87	MAR 23	52642	53264	-622
APR 23	66660	63265	3395	APR 23	51151	51366	-215
MAY 23	62542	62472	70	MAY 23	50960	51643	-684
JUN 23	22032	22893	-861	JUN 23	44568	44910	-343
JUL 23	24876	24140	736	JUL 23	43736	43901	-165
AUG 23	15587	16306	-719	AUG 23	42888	43204	-316
SEP 23	17286	18123	-837	SEP 23	42094	42338	-244
OCT 23	39107	40177	-1070	OCT 23	49247	49493	-246
NOV 23	11712	11849	-137	NOV 23	44122	43854	269
DEC 23	12133	12302	-169	DEC 23	40421	40129	292
JAN 24	19371	19660	-289	JAN 24	39453	39758	-306
FEB 24	6481	6427	54	FEB 24	27676	27566	110
MAR 24	14847	14574	273	MAR 24	32417	32287	130
APR 24	13211	13246	-35	APR 24	27261	27601	-341
MAY 24	6531	6778	-247	MAY 24	26366	26308	58
JUN 24	2171	2169	2	JUN 24	22413	22333	80
JUL 24	1951	1946	5	JUL 24	22619	22536	83
AUG 24	2928	2927	1	AUG 24	22614	22528	86
SEP 24	1343	1352	-9	SEP 24	22105	22024	81
OCT 24	7025	7181	-156	OCT 24	25125	25005	120
NOV 24	4541	4508	33	NOV 24	23375	23304	71
DEC 24	7093	7093	0	DEC 24	25489	25416	73

Source: CME, ICE





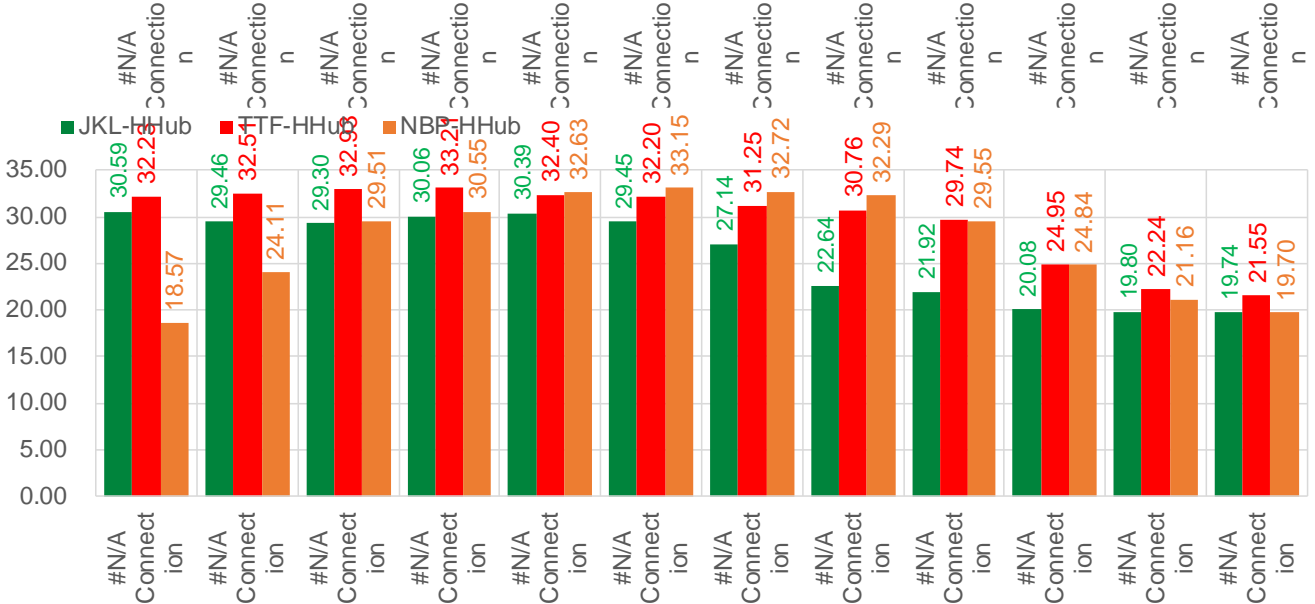
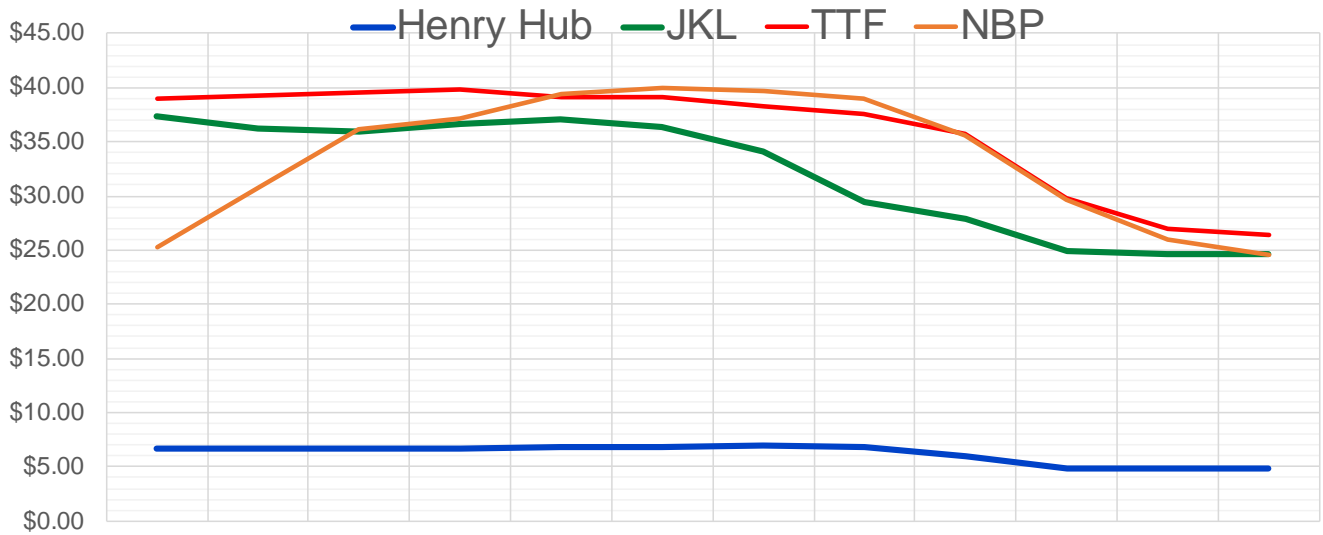
	Jul-22	Aug-22	Sep-22	Oct-22	Nov-22	Dec-22	Jan-23	Feb-23	Mar-23	Apr-23	May-23	Jun-23
Current Price	\$6.944	\$6.906	\$6.861	\$6.850	\$6.940	\$7.055	\$7.146	\$6.916	\$6.235	\$4.998	\$4.894	\$4.954
Last Week	\$8.609	\$8.619	\$8.592	\$8.584	\$8.654	\$8.750	\$8.844	\$8.587	\$7.782	\$6.052	\$5.879	\$5.928
vs. Last Week	-\$1.665	-\$1.713	-\$1.731	-\$1.734	-\$1.714	-\$1.695	-\$1.698	-\$1.671	-\$1.547	-\$1.054	-\$0.985	-\$0.974
4 Weeks Ago	\$8.744	\$8.827	\$8.813	\$8.767	\$8.735	\$8.783	\$8.889	\$8.987	\$8.618	\$7.098	\$5.045	\$4.846
vs. 4 Weeks Ago	-\$1.800	-\$1.921	-\$1.952	-\$1.917	-\$1.795	-\$1.728	-\$1.743	-\$2.071	-\$2.383	-\$2.100	-\$0.151	\$0.108
Last Year	\$3.191	\$3.215	\$3.201	\$3.217	\$3.277	\$3.386	\$3.463	\$3.396	\$3.217	\$2.809	\$2.750	\$2.780
vs. Last Year	\$3.753	\$3.691	\$3.660	\$3.633	\$3.663	\$3.669	\$3.683	\$3.520	\$3.018	\$2.189	\$2.144	\$2.174

	Units	Cash Settled	Prompt Settle	Cash to Prompt
AGT Citygate	\$/MMBtu	7.85	7.02	-0.84
TETCO M3	\$/MMBtu	5.85	6.62	0.77
FGT Zone 3	\$/MMBtu	5.75	7.39	1.64
Zone 6 NY	\$/MMBtu	5.75	6.62	0.87
Chicago Citygate	\$/MMBtu	6.49	6.94	0.45
Michcon	\$/MMBtu	6.44	6.84	0.40
Columbia TCO Pool	\$/MMBtu	5.95	6.45	0.50
Ventura	\$/MMBtu	7.70	6.88	-0.82
Rockies/Opal	\$/MMBtu	6.21	6.63	0.42
El Paso Permian Basin	\$/MMBtu	5.91	6.48	0.57
Socal Citygate	\$/MMBtu	6.66	8.04	1.38
Malin	\$/MMBtu	6.98	6.97	-0.01
Houston Ship Channel	\$/MMBtu	6.34	6.97	0.63
Henry Hub Cash	\$/MMBtu	6.60	6.80	0.20
AECO Cash	C\$/GJ	5.26	4.60	-0.66
Station2 Cash	C\$/GJ	5.02	6.64	1.62
Dawn Cash	C\$/GJ	6.50	6.98	0.48

Source: CME, Bloomberg

	Units	Current Price	vs. Last Week	vs. 4 Weeks Ago	vs. Last Year
NatGas Jul21/Oct21	\$/MMBtu	2.224	▲ 0.000	▲ 0.000	▲ 2.206
NatGas Oct21/Nov21	\$/MMBtu	0.361	▲ 0.000	▲ 0.000	▲ 0.305
NatGas Oct21/Jan22	\$/MMBtu	-1.817	▲ 0.000	▲ 0.000	▼ -2.053
NatGas Apr22/Oct22	\$/MMBtu	1.399	▼ -0.435	▼ -2.015	▲ 1.373
WTI Crude	\$/Bbl	110.65	▼ -8.280	▲ 0.880	▲ 37.590
Brent Crude	\$/Bbl	114.65	▼ -6.520	▲ 1.090	▲ 39.840
Fuel Oil, NY Harbour 1%	\$/Bbl	97.18	▲ 0.000	▲ 0.000	▲ 0.000
Heating Oil	cents/Gallon	435.84	▼ -3.560	▲ 57.660	▲ 220.740
Propane, Mt. Bel	cents/Gallon	1.22	▲ 0.010	▼ -0.013	▲ 0.258
Ethane, Mt. Bel	cents/Gallon	0.63	▼ -0.014	▲ 0.034	▲ 0.357
Coal, PRB	\$/MTon	12.30	▲ 0.000	▲ 0.000	▲ 0.000
Coal, PRB	\$/MMBtu	0.70			
Coal, ILB	\$/MTon	31.05	▲ 0.000	▲ 0.000	▲ 0.000
Coal, ILB	\$/MMBtu	1.32			

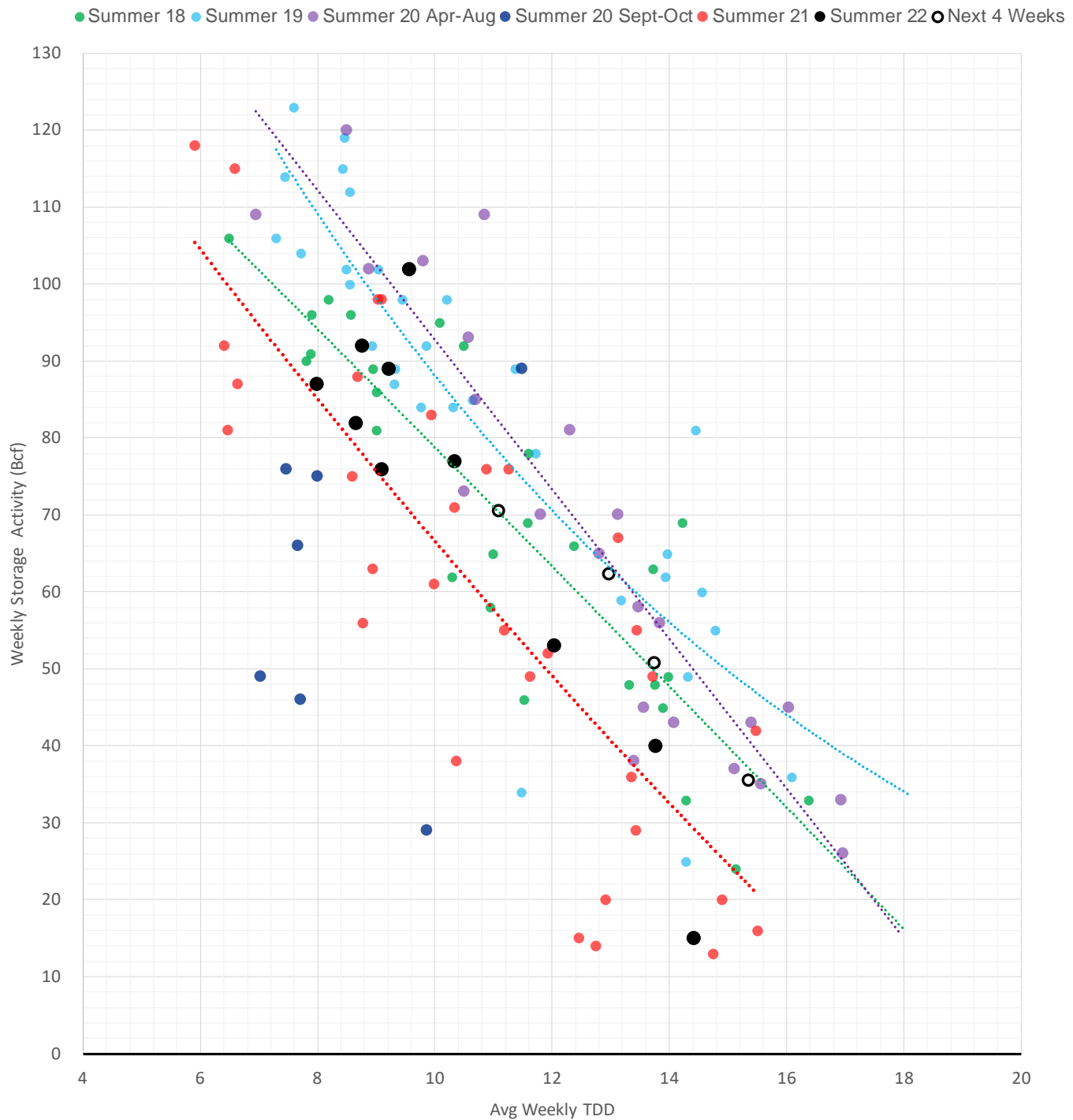
Nat Gas Term Structure (\$MMBTU)



	#N/A	#N/A	#N/A	#N/A	#N/A	#N/A	#N/A	#N/A	#N/A	#N/A	#N/A	#N/A
Henry Hub	\$6.731	\$6.703	\$6.662	\$6.657	\$6.750	\$6.871	\$6.960	\$6.755	\$6.035	\$4.867	\$4.774	\$4.847
JKL	\$37.325	\$36.160	\$35.965	\$36.720	\$37.135	\$36.325	\$34.095	\$29.395	\$27.950	\$24.950	\$24.570	\$24.590
JKL-HHub	\$30.594	\$29.457	\$29.303	\$30.063	\$30.385	\$29.454	\$27.135	\$22.640	\$21.915	\$20.083	\$19.796	\$19.743
TTF	\$38.963	\$39.211	\$39.589	\$39.865	\$39.145	\$39.073	\$38.209	\$37.515	\$35.776	\$29.814	\$27.012	\$26.396
TTF-HHub	\$32.232	\$32.508	\$32.927	\$33.208	\$32.395	\$32.202	\$31.249	\$30.760	\$29.741	\$24.947	\$22.238	\$21.549
NBP	\$25.297	\$30.809	\$36.176	\$37.202	\$39.377	\$40.018	\$39.676	\$39.043	\$35.585	\$29.704	\$25.932	\$24.551
NBP-HHub	\$18.566	\$24.106	\$29.514	\$30.545	\$32.627	\$33.147	\$32.716	\$32.288	\$29.550	\$24.837	\$21.158	\$19.704

The risk of trading futures and options and other derivatives involves a substantial risk of loss and is not suitable for all persons. Each person must consider whether a particular trade, combination of trades, or strategy is suitable for that person's financial means and objectives. Past results are not necessarily indicative of future results. This communication may contain links to third party websites that are not under the control of and are not maintained by ION Energy Group, and ION Energy Group is not responsible for their content.

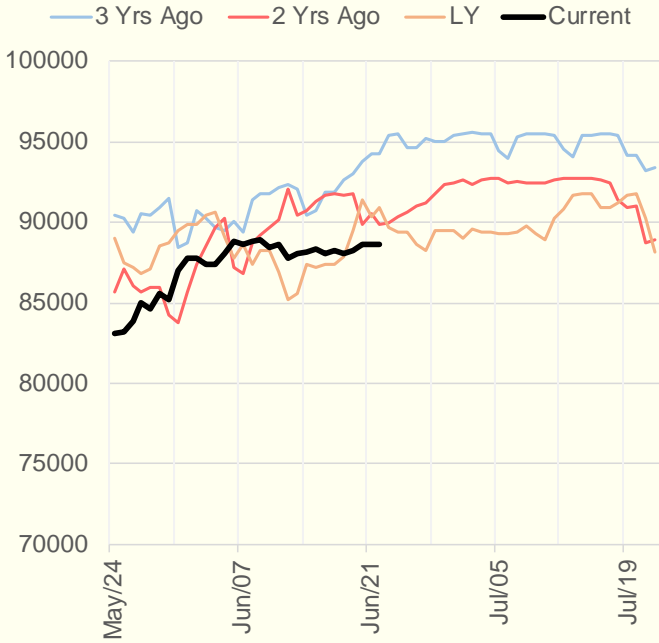
Weather Storage Model - Next 4 Week Forecast



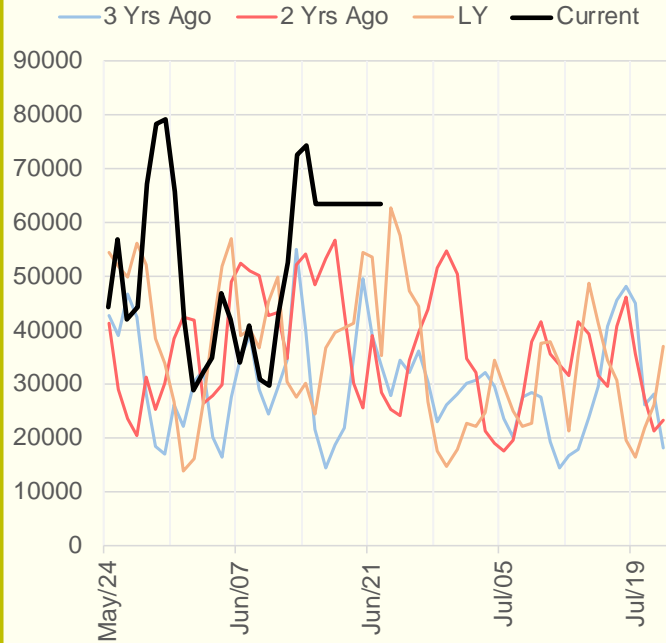
The risk of trading futures and options and other derivatives involves a substantial risk of loss and is not suitable for all persons. Each person must consider whether a particular trade, combination of trades, or strategy is suitable for that person's financial means and objectives. Past results are not necessarily indicative of future results. This communication may contain links to third party websites which are not under the control of and are not maintained by ION Energy Group, and ION Energy Group is not responsible for their content.

95.3

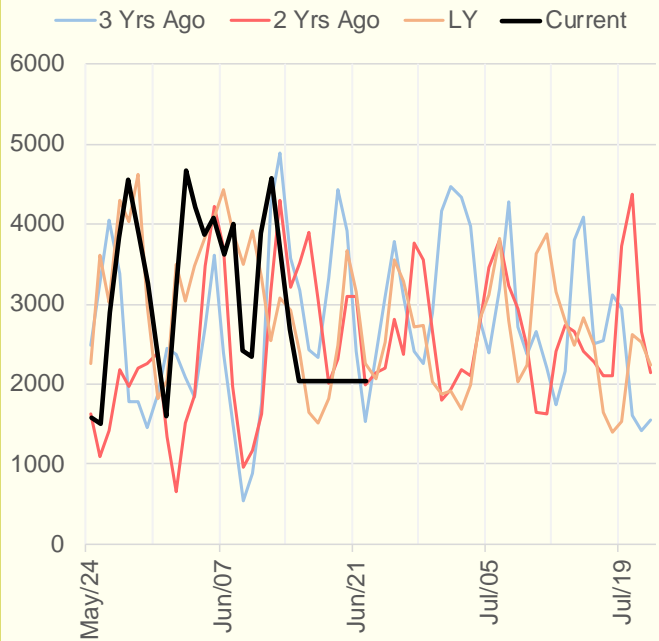
NRC Nuclear Daily Output



US Wind



CALI Wind



TEXAS Wind

