

	Current	Δ from YD	Δ from 7D Avg
Nat Gas Prompt	\$ 6.30	▲ \$ 0.06	▼ \$ (0.51)

	Current	Δ from YD	Δ from 7D Avg
WTI Prompt	\$ 106.13	▲ \$ 1.86	▼ \$ (2.3)

	Current	Δ from YD	Δ from 7D Avg
Brent Prompt	\$ 111.79	▲ \$ 1.74	▼ \$ (1.1)

Page Menu

[Short-term Weather Model Outlooks](#)

[Lower 48 Component Models](#)

[Regional S/D Models Storage Projection](#)

[Weather Model Storage Projection](#)

[Supply – Demand Trends](#)

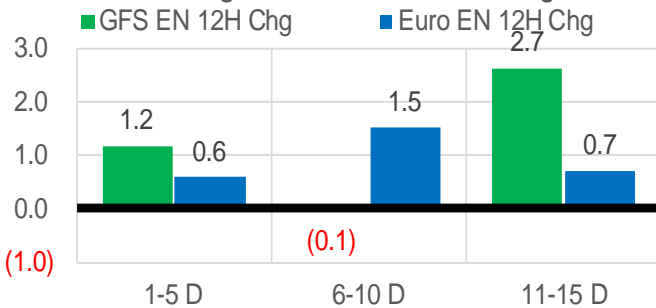
[Nat Gas Options Volume and Open Interest](#)

[Nat Gas Futures Open Interest](#)

[Price Summary](#)

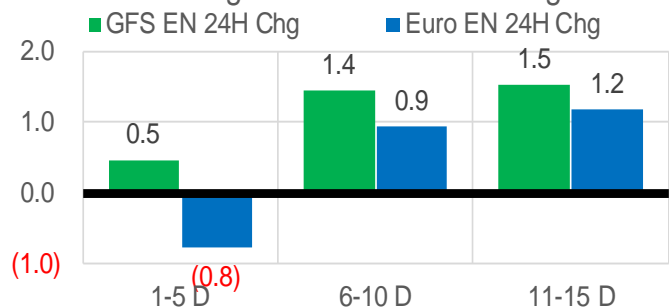
Vs. 12H Ago

L48 Region - 00z TDD vs 12H Ago



Vs. 24H Ago

L48 Region - 00z TDD vs 24H Ago



	Current	Δ from YD	Δ from 7D Avg
US Dry Production	95.8	▲ 0.22	▼ -0.13

	Current	Δ from YD	Δ from 7D Avg
US Power Burns	38.3	▼ -1.34	▲ 1.13

	Current	Δ from YD	Δ from 7D Avg
US ResComm	8.0	▼ -0.16	▼ -0.39

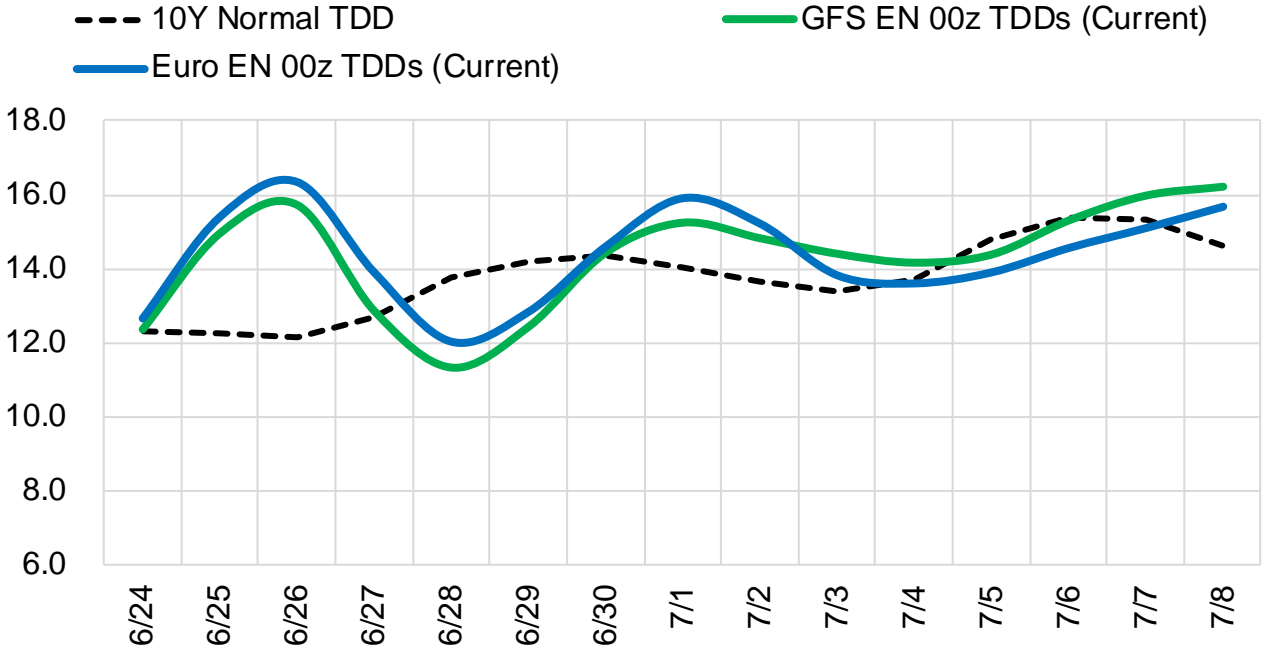
	Current	Δ from YD	Δ from 7D Avg
Canadian Imports	5.5	▼ -0.02	▼ -0.09

	Current	Δ from YD	Δ from 7D Avg
Net LNG Exports	10.4	▼ -0.13	▼ -0.26

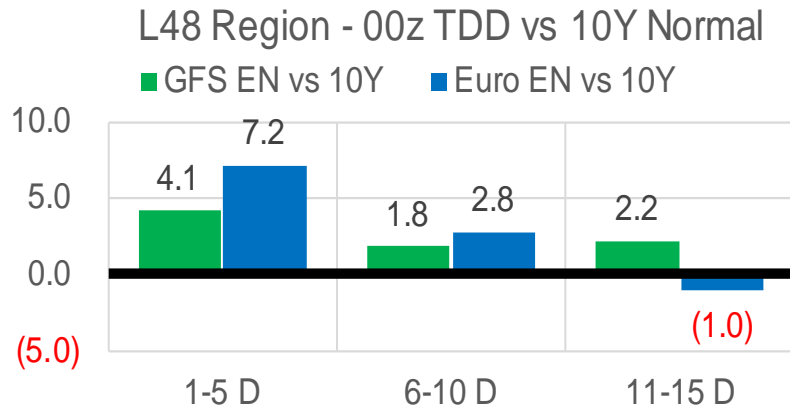
	Current	Δ from YD	Δ from 7D Avg
Mexican Exports	7.0	▼ -0.09	▲ 0.05

Short-term Weather Model Outlooks (00z)

L48 Region



Vs. 10Y Normal



Source: WSI , Bloomberg

Lower 48 Component Models

Daily Balances

	18-Jun	19-Jun	20-Jun	21-Jun	22-Jun	23-Jun	24-Jun	DoD	vs. 7D
Lower 48 Dry Production	95.9	96.1	96.1	96.1	96.1	95.6	95.8	▲ 0.2	▼ -0.2
Canadian Imports	5.4	5.4	5.6	5.6	5.6	5.5	5.5	▼ 0.0	▼ 0.0
L48 Power	33.0	31.2	35.2	39.5	41.4	39.6	38.3	▼ -1.3	▲ 1.6
L48 Residential & Commercial	8.5	8.6	8.3	8.5	8.3	8.2	8.0	▼ -0.2	▼ -0.4
L48 Industrial	20.2	20.1	20.1	20.1	20.3	20.7	21.2	▲ 0.5	▲ 1.0
L48 Lease and Plant Fuel	5.2	5.2	5.2	5.2	5.2	5.2	5.2	▼ 0.0	▼ 0.0
L48 Pipeline Distribution	2.3	2.2	2.4	2.6	2.7	2.6	2.5	▼ -0.1	▲ 0.1
L48 Regional Gas Consumption	69.2	67.3	71.3	75.9	77.9	76.3	75.2	▼ -1.1	▲ 2.3
Net LNG Delivered	10.63	10.58	10.75	10.53	10.51	10.50	10.37	▼ -0.1	▼ -0.2
Total Mexican Exports	6.7	6.8	7.0	7.1	7.1	7.1	7.0	▼ -0.1	▲ 0.1
Implied Daily Storage Activity	14.8	16.8	12.7	8.3	6.1	7.1	8.6		
EIA Reported Daily Storage Activity									
Daily Model Error									

EIA Storage Week Balances

	20-May	27-May	3-Jun	10-Jun	17-Jun	24-Jun	WoW	vs. 4W
Lower 48 Dry Production	95.3	96.3	97.0	96.4	95.9	95.9	▼ 0.0	▼ -0.5
Canadian Imports	4.9	4.9	4.8	5.4	6.1	5.6	▼ -0.5	▲ 0.3
L48 Power	30.4	30.0	30.4	32.3	37.8	37.2	▼ -0.6	▲ 4.5
L48 Residential & Commercial	10.0	11.6	9.1	8.6	8.3	8.4	▲ 0.1	▼ -1.0
L48 Industrial	21.3	20.2	21.5	21.4	21.4	20.3	▼ -1.1	▼ -0.8
L48 Lease and Plant Fuel	5.1	5.2	5.2	5.2	5.2	5.2	▼ 0.0	▼ 0.0
L48 Pipeline Distribution	2.3	2.4	2.2	2.2	2.5	2.5	▼ 0.0	▲ 0.2
L48 Regional Gas Consumption	69.1	69.4	68.4	69.8	75.2	73.6	▼ -1.6	▲ 2.9
Net LNG Exports	12.2	13.0	12.8	12.3	10.7	10.6	▼ 0.0	▼ -1.6
Total Mexican Exports	7.0	7.0	7.1	7.1	7.2	7.0	▼ -0.2	▼ -0.1
Implied Daily Storage Activity	11.9	11.6	13.5	12.7	9.0	10.3	1.3	
EIA Reported Daily Storage Activity	12.4	11.7	14.6	13.1	10.6			
Daily Model Error	-0.5	-0.1	-1.0	-0.4	-1.6			

Monthly Balances

	2Yr Ago Jun-20	LY Jun-21	Feb-22	Mar-22	Apr-22	May-22	MTD Jun-22	MoM	vs. LY
Lower 48 Dry Production	87.9	93.2	92.7	93.5	96.0	96.1	96.2	▲ 0.1	▲ 2.9
Canadian Imports	4.0	4.8	6.5	5.2	5.8	5.1	5.6	▲ 0.5	▲ 0.8
L48 Power	34.9	35.9	28.7	25.5	24.7	28.8	35.6	▲ 6.8	▼ -0.3
L48 Residential & Commercial	8.8	8.9	43.3	31.5	22.5	12.3	8.5	▼ -3.8	▼ -0.4
L48 Industrial	20.0	20.2	22.1	19.7	21.4	20.9	21.1	▲ 0.2	▲ 0.9
L48 Lease and Plant Fuel	4.8	5.0	5.1	5.2	5.2	5.2	5.2	▲ 0.0	▲ 0.2
L48 Pipeline Distribution	2.3	2.4	3.5	2.9	2.6	2.3	2.4	▲ 0.1	▼ 0.0
L48 Regional Gas Consumption	70.8	72.5	102.7	84.7	76.4	69.5	72.8	▲ 3.3	▲ 0.3
Net LNG Exports	4.0	10.2	12.4	12.9	12.3	12.5	11.3	▼ -1.2	▲ 1.2
Total Mexican Exports	5.5	7.4	6.2	6.5	6.7	7.0	7.1	▲ 0.1	▼ -0.3
Implied Daily Storage Activity	11.5	8.0	-22.1	-5.4	6.3	12.2	10.6		
EIA Reported Daily Storage Activity									
Daily Model Error									

Source: Bloomberg, analytix.ai

Daily Average Generation Data

Nuclear Generation Daily Average - GWh (NRC)

	16-Jun	17-Jun	18-Jun	19-Jun	20-Jun	21-Jun	22-Jun	DoD	vs. 7D
NRC Nuclear Daily Output	88.0	88.3	88.1	88.3	88.7	89.6	0.0	-89.6	-88.5
NRC Nuclear Max Capacity	104.9	104.9	104.9	104.9	104.9	104.9	104.9	0.0	0.0
NRC Nuclear Outage	16.8	16.6	16.8	16.6	16.2	15.2	104.9	89.6	88.5
NRC % Nuclear Cap Utilization	89.5	89.8	89.6	89.8	90.2	91.1	0.0	-91.1	-90.0

Wind Generation Daily Average - MWh (EIA)

	16-Jun	17-Jun	18-Jun	19-Jun	20-Jun	21-Jun	22-Jun	DoD	vs. 7D
CALI Wind	2048	2048	2048	2048	2048	2048	2048	0	0
TEXAS Wind	22879	22879	22879	22879	22879	22879	22879	0	0
US Wind	63443	63443	63443	63443	63443	63443	63443	0	0

EIA 930 data is not being updated. EIA experiencing some issues.

Generation Daily Average - MWh (EIA)

	16-Jun	17-Jun	18-Jun	19-Jun	20-Jun	21-Jun	22-Jun	DoD	vs. 7D
US Wind	63443	63443	63443	63443	63443	63443	63443	0	0
US Solar	19728	19728	19728	19728	19728	19728	19728	0	0
US Petroleum	1333	1333	1333	1333	1333	1333	1333	0	0
US Other	9775	9775	9775	9775	9775	9775	9775	0	0
US Coal	119543	119543	119543	119543	119543	119543	119543	0	0
US Nuke	90696	90696	90696	90696	90696	90696	90696	0	0
US Hydro	39690	39690	39690	39690	39690	39690	39690	0	0
US Gas	220700	220700	220700	220700	220700	220700	220700	0	0

See National Wind and Nuclear daily charts

Source: Bloomberg, analytix.ai

Storage Week Average Generation Data

Nuclear Generation Weekly Average - GWh (NRC)

	20-May	27-May	3-Jun	10-Jun	17-Jun	24-Jun	WoW	WoW Bcf/d Impact
NRC Nuclear Daily Output	81.7	84.2	86.2	88.3	88.2	63.3	-24.9	4.5
NRC Nuclear Max Capacity	104.9	104.9	104.9	104.9	104.9	104.9	0.0	
NRC Nuclear Outage	23.2	20.6	18.7	16.6	16.7	41.6	24.9	
NRC % Nuclear Cap Utilization	83.1	85.7	87.6	89.8	89.7	64.3	-25.3	

Wind Generation Weekly Average - MWh (EIA)

	20-May	27-May	3-Jun	10-Jun	17-Jun	24-Jun	WoW	WoW Bcf/d Impact
CALI Wind	3452	2798	3268	3842	3032	2048	-985	0.2
TEXAS Wind	15706	14010	17915	12449	20462	22879	2418	-0.4
US Wind	50251	50129	57939	37417	57090	63443	6352	-1.1

Generation Weekly Average - MWh (EIA)

	20-May	27-May	3-Jun	10-Jun	17-Jun	24-Jun	WoW	WoW Bcf/d Impact
US Wind	50251	50129	57939	37417	57090	63443	6352	-1.1
US Solar	19634	17534	18656	18807	18731	19728	997	-0.2
US Petroleum	262	448	863	968	1244	1333	89	0.0
US Other	7871	7684	7866	8001	8688	9775	1087	-0.2
US Coal	88922	88570	89706	95415	106566	119543	12978	-2.3
US Nuke	85510	88016	89728	91641	91235	90696	-540	0.1
US Hydro	31973	33772	35051	36328	37495	39690	2195	-0.4
US Gas	172224	160070	163383	178204	201845	220700	18854	3.4

0.1
EIA 930 data is not being updated. EIA experiencing some issues.

See National Wind and Nuclear daily charts

Monthly Average Generation Data

Nuclear Generation Monthly Average - GWh (NRC)

	2Yr Ago	LY	MTD				Last 30 days	MoM (MTD vs LY)	Last 30 days YoY
	Same 30 days	Same 30 days	Mar-22	Apr-22	May-22	Jun-22			
	NRC Nuclear Daily Output	88.9	88.5	81.3	73.3	81.7			
NRC Nuclear Max Capacity	104.9	104.9	104.9	104.9	104.9	104.9	104.9	0.0	0.0
NRC Nuclear Outage	16.0	16.4	23.6	31.6	23.2	27.6	26.0	4.4	9.6
NRC % Nuclear Cap Utilization	90.4	90.0	82.7	74.5	83.0	78.6	80.2	-4.5	-9.8

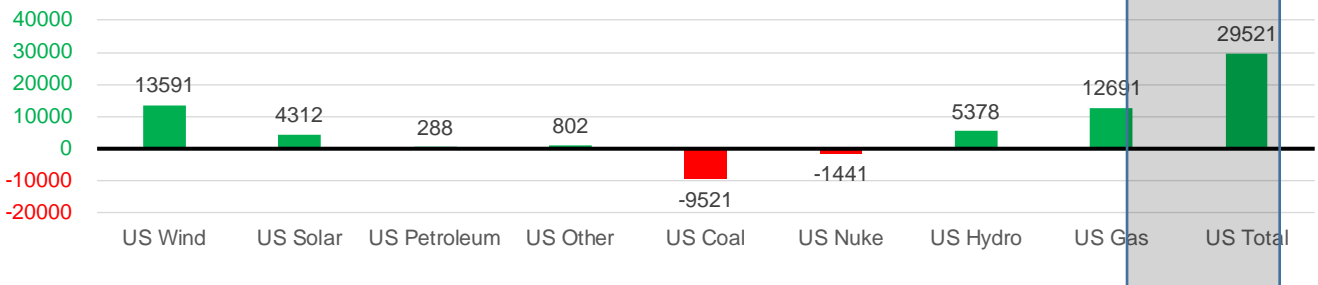
Wind Generation Monthly Average - MWh (EIA)

	2Yr Ago	LY	MTD				Last 30 days	MoM (MTD vs LY)	Last 30 days YoY
	Same 30 days	Same 30 days	Mar-22	Apr-22	May-22	Jun-22			
	CALI Wind	2430	3067	2250	3186	3361			
TEXAS Wind	9675	10381	14837	16311	16756	18121	18189	1365	7808
US Wind	38047	40298	58528	64183	56462	51657	53889	-4805	13591

Generation Monthly Average - MWh (EIA)

	2Yr Ago	LY	MTD				Last 30 days	MoM (MTD vs LY)	Last 30 days YoY
	Same 30 days	Same 30 days	Mar-22	Apr-22	May-22	Jun-22			
	US Wind	38047	40298	58528	64183	56462			
US Solar	11551	14681	14061	16296	18186	19089	18992	▼ -96.1	▲ 4312
US Petroleum	698	797	985	985	518	1172	1086	▼ -87	▲ 288
US Other	8172	7778	7206	7386	7724	8799	8579	▼ -220	▲ 802
US Coal	87687	112395	82290	77545	85273	107247	102874	▼ -4373	▼ -9521
US Nuke	92599	92160	85256	77217	85496	91167	90719	▼ -448	▼ -1441
US Hydro	37682	31862	33959	29022	31369	37769	37240	▼ -529	▲ 5378
US Gas	180058	178420	137232	133068	157565	200660	191111	▼ -3521	▲ 12691
US Total	455165	478729	419838	406223	443965	521363	508250	▼ -9274	▲ 29521

Last 30 days YoY



See National Wind and Nuclear daily charts

Source: Bloomberg, analytix.ai

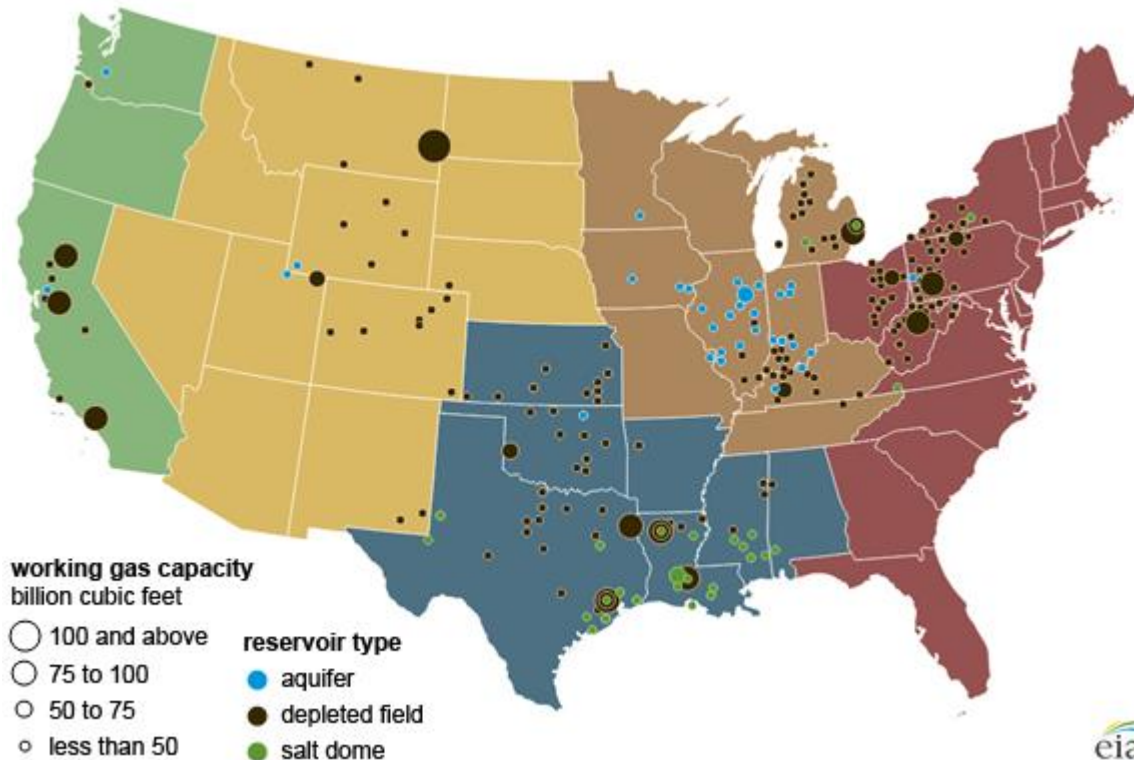
Regional S/D Models Storage Projection

Week Ending 24-Jun

	Daily Raw Storage	Daily Adjustment Factor	Daily Average Storage Activity (Adjusted) *	Weekly Adjusted Storage Activity
L48	11.2	0.2	11.4	80
East	2.0	1.7	3.7	26
Midwest	5.6	-1.1	4.5	31
Mountain	4.8	-3.8	0.9	7
South Central	-2.7	4.2	1.6	11
Pacific	1.5	-0.8	0.7	5

*Adjustment Factor is calculated based on historical regional deltas

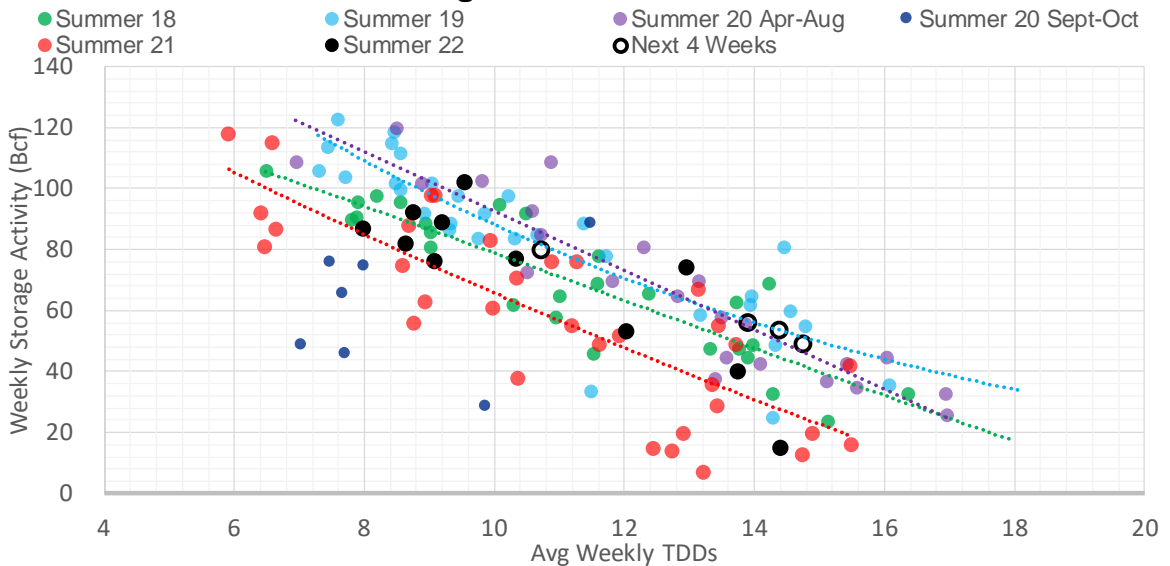
U.S. underground natural gas storage facilities by type (July 2015)



Weather Model Storage Projection

Next report and beyond		
Week Ending	GWDDs	Week Storage Projection
24-Jun	11	80
01-Jul	14	56
08-Jul	15	49
15-Jul	14	53

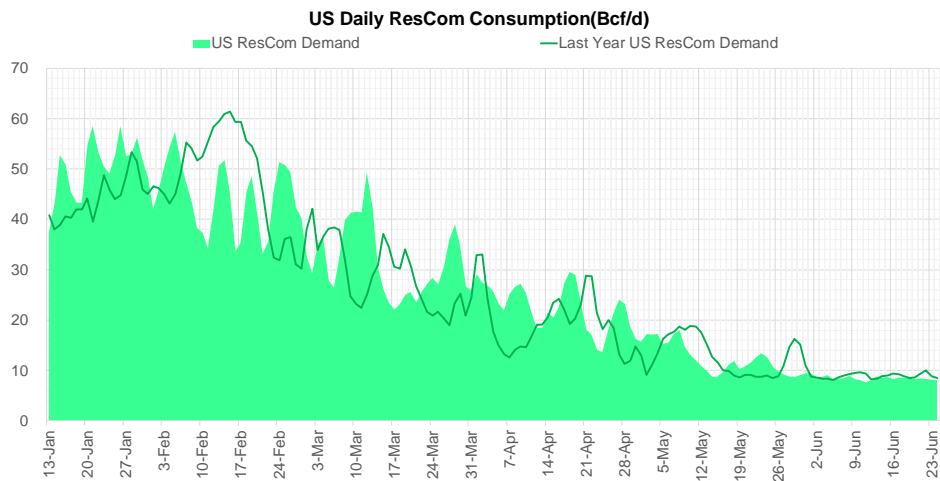
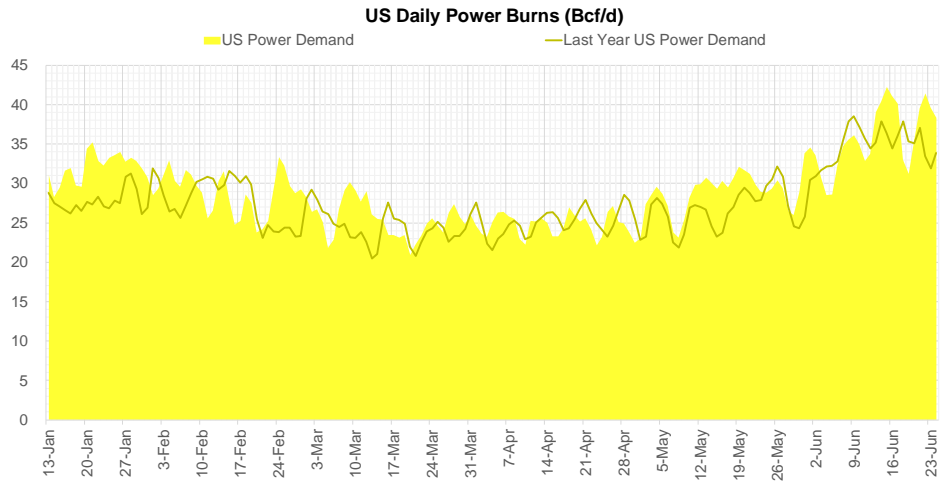
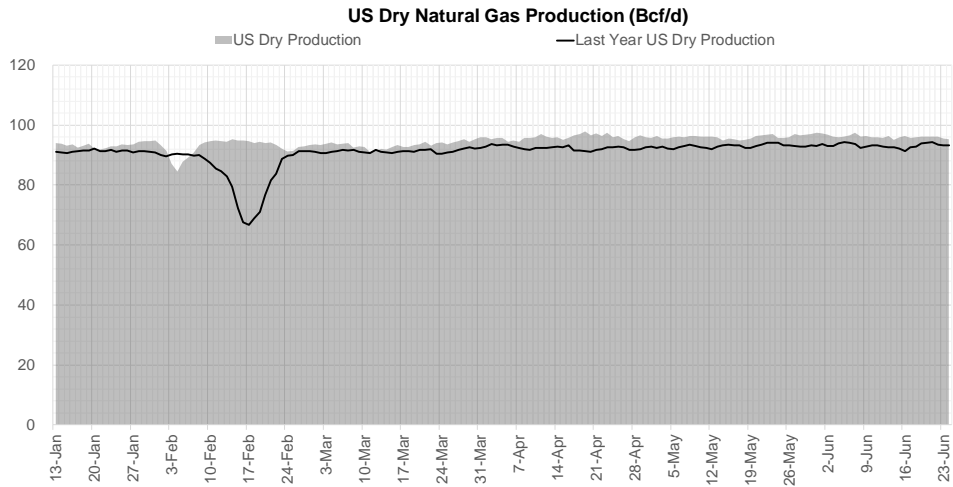
Weather Storage Model - Next 4 Week Forecast



Go to larger image



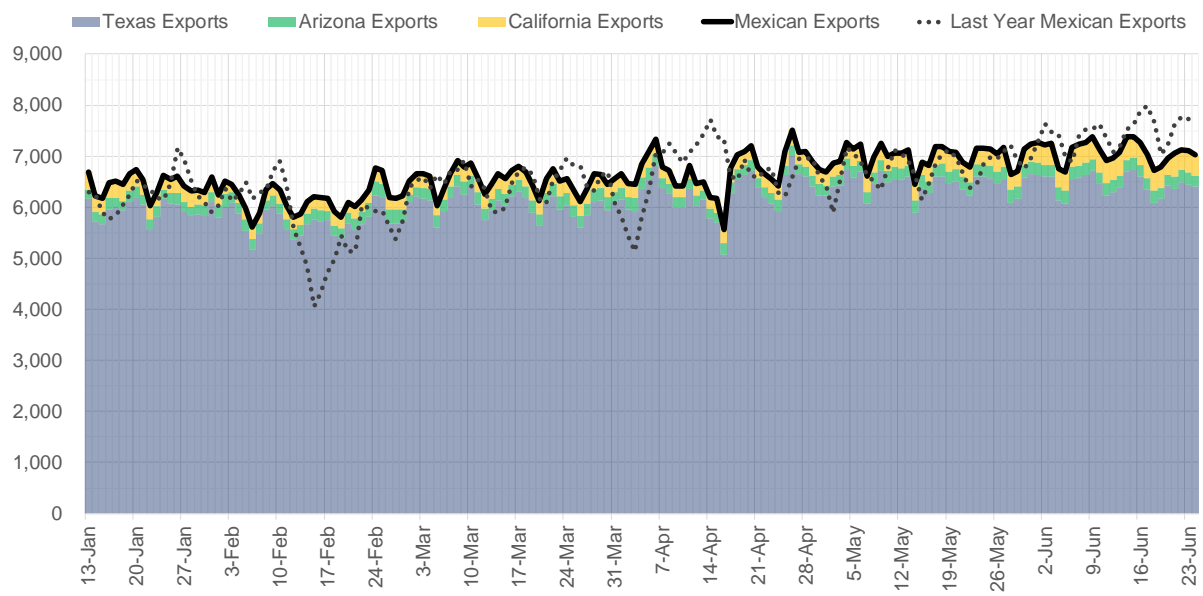
Supply – Demand Trends



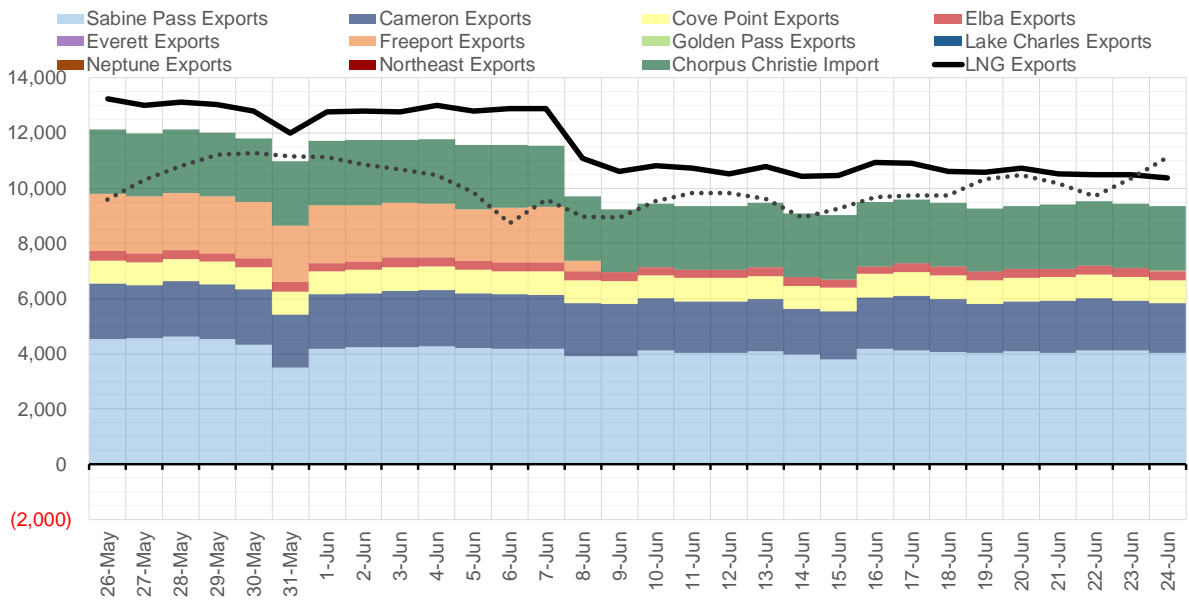
Source: Bloomberg

The risk of trading futures and options and other derivatives involves a substantial risk of loss and is not suitable for all persons. Each person must consider whether a particular trade, combination of trades, or strategy is suitable for that person's financial means and objectives. Past results are not necessarily indicative of future results. This communication may contain links to third party websites which are not under the control of and are not maintained by ION Energy Group, and ION Energy Group is not responsible for their content.

Mexican Exports (MMcf/d)



Net LNG Exports - Last 30 days (MMcf/d)



Source: Bloomberg

The risk of trading futures and options and other derivatives involves a substantial risk of loss and is not suitable for all persons. Each person must consider whether a particular trade, combination of trades, or strategy is suitable for that person's financial means and objectives. Past results are not necessarily indicative of future results. This communication may contain links to third party websites which are not under the control of and are not maintained by ION Energy Group, and ION Energy Group is not responsible for their content.

Nat Gas Options Volume and Open Interest CME and ICE Combined

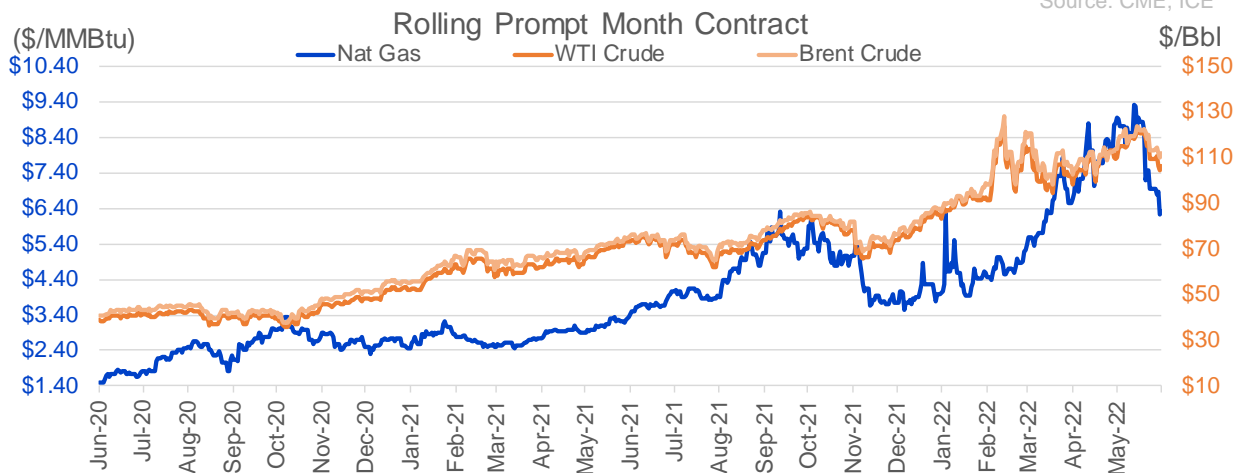
CONTRACT MONTH	CONTRACT YEAR	PUT/CALL	STRIKE	CUMULATIVE VOL	CONTRACT MONTH	CONTRACT YEAR	PUT/CALL	STRIKE	CUMULATIVE OI
7	2022	P	6.00	8842	7	2022	C	11.00	41668
7	2022	P	5.50	6197	8	2022	C	10.00	40856
7	2022	C	6.50	5201	8	2022	C	12.00	37926
8	2022	C	10.00	4725	10	2022	C	6.00	35447
7	2022	P	6.50	4468	8	2022	C	10.50	30308
7	2022	P	6.25	4305	10	2022	P	6.00	24063
7	2022	C	7.00	3557	9	2022	C	6.00	23666
7	2022	P	5.25	3529	10	2022	C	5.00	23565
10	2022	P	5.00	3364	7	2022	C	10.00	23551
8	2022	P	5.50	3147	7	2022	C	9.50	23414
7	2022	C	6.60	3134	7	2022	P	6.00	23177
8	2022	C	7.00	3075	7	2022	C	9.00	22839
8	2022	P	5.00	2787	8	2022	C	12.10	22003
7	2022	P	5.75	2738	10	2022	P	3.00	21986
7	2022	C	8.00	2367	8	2022	P	6.00	21728
9	2022	C	10.00	2100	9	2022	C	10.00	21363
8	2022	P	6.00	1848	10	2022	P	3.50	20652
8	2022	C	8.00	1833	7	2022	C	11.10	20511
8	2022	C	6.50	1737	10	2022	P	2.50	19870
9	2022	C	9.00	1716	8	2022	C	6.00	19647
10	2022	P	4.00	1698	5	2023	P	2.00	19502
3	2023	C	10.00	1675	9	2022	P	4.00	19418
8	2022	P	4.50	1606	7	2022	C	6.00	19197
8	2022	P	5.75	1545	7	2022	C	7.00	19051
7	2022	C	7.25	1518	8	2022	C	7.00	18764
9	2022	P	6.00	1515	7	2022	C	8.00	18369
1	2023	P	3.50	1500	9	2022	C	7.00	18289
10	2022	C	12.00	1427	12	2022	C	5.00	18221
9	2022	P	5.00	1366	8	2022	C	9.00	18016
7	2022	C	7.50	1349	7	2022	P	7.00	17429
7	2022	P	5.00	1213	7	2022	P	3.25	17194
10	2022	P	4.50	1163	10	2022	P	2.00	17158
10	2022	P	3.00	1152	3	2023	C	10.00	17003
7	2022	C	6.75	1129	7	2022	P	5.50	16577
3	2023	C	7.00	1115	10	2022	C	10.00	16486
3	2023	C	7.50	1100	10	2022	P	4.00	16342
6	2023	P	4.00	1100	8	2022	P	7.00	16159
7	2022	P	7.00	1059	10	2023	P	2.00	16130
8	2022	C	9.50	1045	2	2023	C	10.00	16024
9	2022	P	6.75	1021	9	2022	C	4.00	15970
9	2022	C	15.00	1011	9	2022	P	2.50	15293
10	2022	C	7.00	994	7	2022	P	3.50	15279
7	2022	P	5.80	977	1	2023	C	10.00	15199
10	2022	C	8.00	977	9	2022	P	2.75	14887
8	2022	C	8.50	975	7	2022	P	5.00	14864
6	2023	C	6.00	955	7	2022	P	4.50	14843
8	2022	P	6.70	930	12	2022	P	5.00	14720
4	2023	C	8.00	930	10	2022	C	8.00	14635
5	2023	C	8.00	930	9	2022	P	3.00	14600
					7	2022	C	7.5	14559.25

Source: CME, ICE

Nat Gas Futures Open Interest CME and ICE Combined

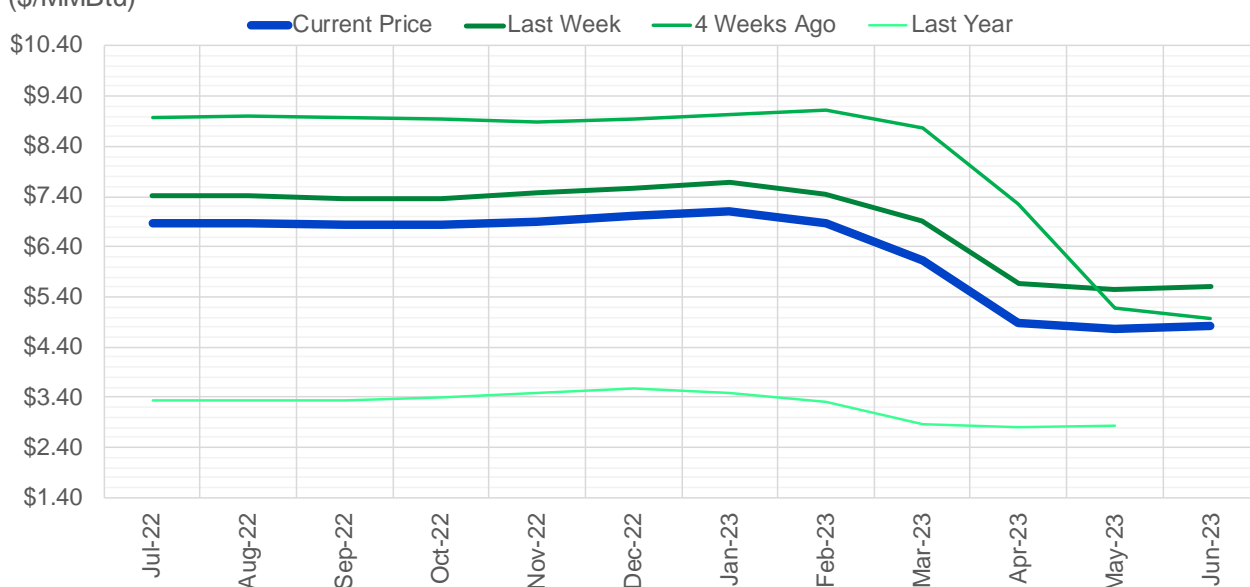
CME Henry Hub Futures (10,000 MMBtu)				ICE Henry Hub Futures Contract Equivalent (10,000 MM			
	Current	Prior	Daily Change		Current	Prior	Daily Change
JUL 22	16695	25223	-8528	JUL 22	73669	75451	-1782
AUG 22	108673	108465	208	AUG 22	77637	73634	4003
SEP 22	145947	149017	-3070	SEP 22	78858	78388	470
OCT 22	97327	97772	-445	OCT 22	73240	73941	-701
NOV 22	55132	54501	631	NOV 22	59970	59187	783
DEC 22	51744	51036	708	DEC 22	64474	62723	1751
JAN 23	61564	62679	-1115	JAN 23	67062	67102	-40
FEB 23	30059	28032	2027	FEB 23	54279	54130	149
MAR 23	45547	45941	-394	MAR 23	52059	52079	-20
APR 23	65989	66821	-832	APR 23	51359	50886	473
MAY 23	60666	61262	-596	MAY 23	50562	51279	-718
JUN 23	21693	22175	-482	JUN 23	44247	44512	-264
JUL 23	24623	24857	-234	JUL 23	43549	43834	-285
AUG 23	15742	15758	-16	AUG 23	42722	42969	-247
SEP 23	17093	17344	-251	SEP 23	41958	42181	-223
OCT 23	39071	39350	-279	OCT 23	49633	49184	448
NOV 23	11875	11680	195	NOV 23	44140	44185	-46
DEC 23	11902	12039	-137	DEC 23	40200	40193	7
JAN 24	18616	19029	-413	JAN 24	38934	39537	-603
FEB 24	6682	6480	202	FEB 24	27864	27728	136
MAR 24	15566	14931	635	MAR 24	32608	32551	57
APR 24	13572	13194	378	APR 24	27387	27323	65
MAY 24	6156	6520	-364	MAY 24	26435	26438	-3
JUN 24	2191	2174	17	JUN 24	22543	22482	61
JUL 24	1960	1944	16	JUL 24	22728	22650	78
AUG 24	2937	2928	9	AUG 24	22743	22670	72
SEP 24	1351	1343	8	SEP 24	22309	22223	86
OCT 24	7020	6997	23	OCT 24	25500	25439	61
NOV 24	4537	4524	13	NOV 24	23563	23459	104
DEC 24	7106	7091	15	DEC 24	25650	25575	75

Source: CME, ICE



(\$/MMBtu)

Nat Gas Term Structure



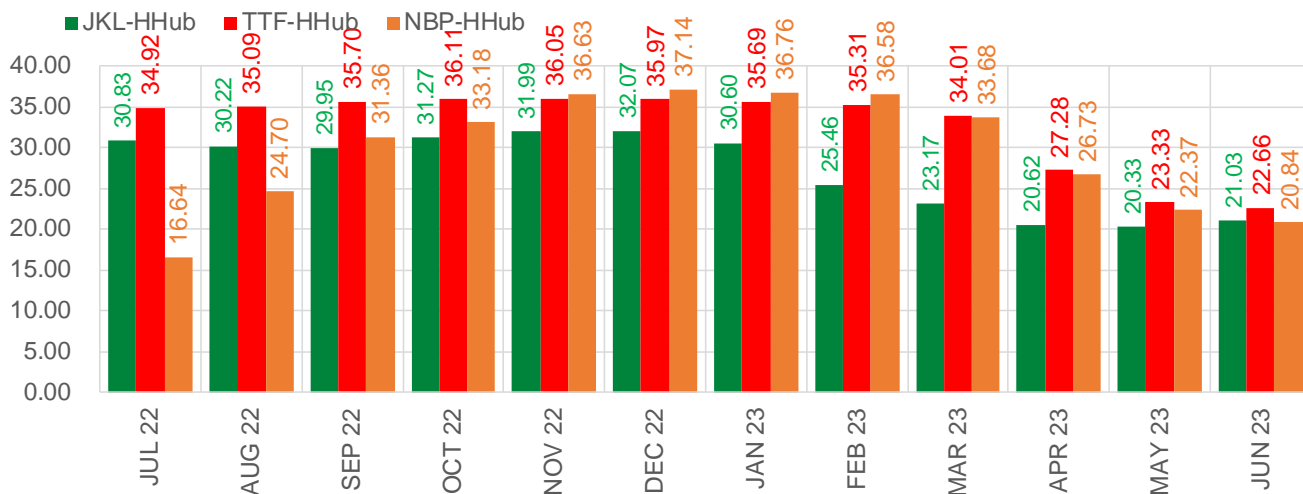
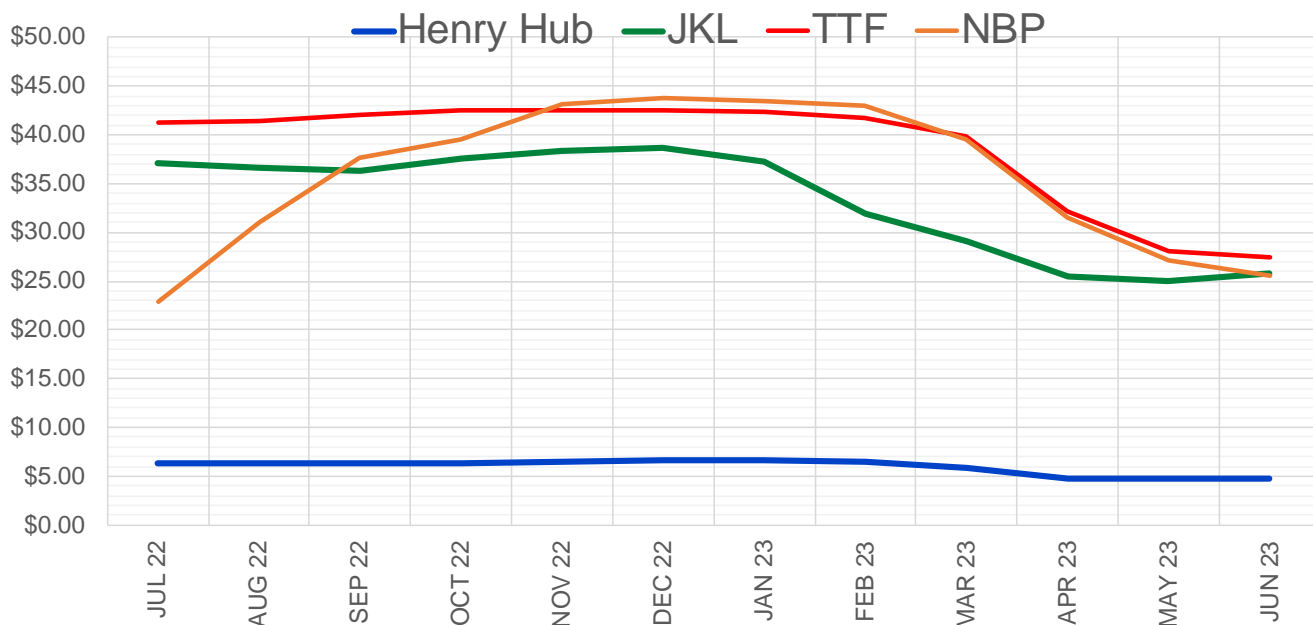
	Jul-22	Aug-22	Sep-22	Oct-22	Nov-22	Dec-22	Jan-23	Feb-23	Mar-23	Apr-23	May-23	Jun-23
Current Price	\$6.858	\$6.872	\$6.835	\$6.826	\$6.905	\$7.019	\$7.110	\$6.876	\$6.121	\$4.873	\$4.770	\$4.836
Last Week	\$7.420	\$7.406	\$7.370	\$7.369	\$7.463	\$7.574	\$7.669	\$7.457	\$6.906	\$5.674	\$5.547	\$5.598
vs. Last Week	-\$0.562	-\$0.534	-\$0.535	-\$0.543	-\$0.558	-\$0.555	-\$0.559	-\$0.581	-\$0.785	-\$0.801	-\$0.777	-\$0.762
4 Weeks Ago	\$8.971	\$8.993	\$8.972	\$8.929	\$8.898	\$8.936	\$9.032	\$9.125	\$8.773	\$7.257	\$5.178	\$4.969
vs. 4 Weeks Ago	-\$2.113	-\$2.121	-\$2.137	-\$2.103	-\$1.993	-\$1.917	-\$1.922	-\$2.249	-\$2.652	-\$2.384	-\$0.408	-\$0.133
Last Year	\$3.333	\$3.352	\$3.333	\$3.343	\$3.394	\$3.495	\$3.565	\$3.488	\$3.297	\$2.869	\$2.804	\$2.833
vs. Last Year	\$3.525	\$3.520	\$3.502	\$3.483	\$3.511	\$3.524	\$3.545	\$3.388	\$2.824	\$2.004	\$1.966	\$2.003

	Units	Cash Settled	Prompt Settle	Cash to Prompt
AGT Citygate	\$/MMBtu	7.85	7.29	-0.56
TETCO M3	\$/MMBtu	5.57	6.91	1.34
FGT Zone 3	\$/MMBtu	5.94	7.89	1.96
Zone 6 NY	\$/MMBtu	5.94	6.82	0.88
Chicago Citygate	\$/MMBtu	6.30	7.22	0.92
Michcon	\$/MMBtu	6.39	7.15	0.76
Columbia TCO Pool	\$/MMBtu	5.66	6.73	1.07
Ventura	\$/MMBtu	7.70	7.08	-0.62
Rockies/Opal	\$/MMBtu	6.45	6.88	0.43
El Paso Permian Basin	\$/MMBtu	6.12	6.62	0.50
Socal Citygate	\$/MMBtu	7.58	7.68	0.10
Malin	\$/MMBtu	6.19	7.04	0.85
Houston Ship Channel	\$/MMBtu	6.33	7.08	0.75
Henry Hub Cash	\$/MMBtu	6.47	7.01	0.54
AECO Cash	C\$/GJ	4.97	5.80	0.83
Station2 Cash	C\$/GJ	4.58	6.72	2.14
Dawn Cash	C\$/GJ	6.26	7.24	0.98

Source: CME, Bloomberg

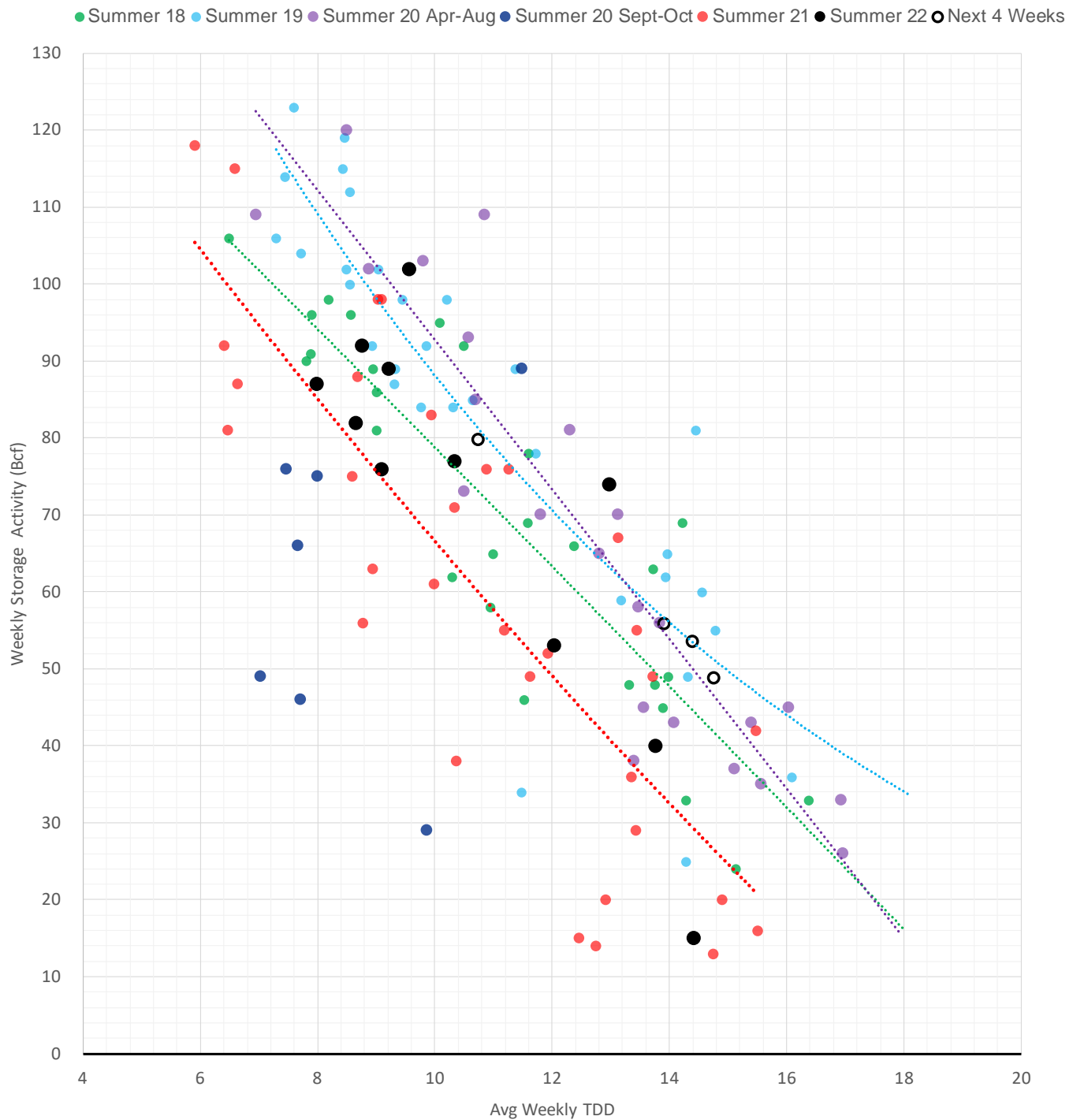
	Units	Current Price	vs. Last Week	vs. 4 Weeks Ago	vs. Last Year
NatGas Jul21/Oct21	\$/MMBtu	2.224	▲ 0.000	▲ 0.000	▲ 2.220
NatGas Oct21/Nov21	\$/MMBtu	0.361	▲ 0.000	▲ 0.000	▲ 0.314
NatGas Oct21/Jan22	\$/MMBtu	-1.817	▲ 0.000	▲ 0.000	▼ -2.033
NatGas Apr22/Oct22	\$/MMBtu	0.953	▼ -1.094	▼ -2.513	▲ 0.938
WTI Crude	\$/Bbl	104.27	▼ -13.320	▼ -9.820	▲ 30.970
Brent Crude	\$/Bbl	110.05	▼ -9.760	▼ -7.350	▲ 34.490
Fuel Oil, NY Harbour 1%	\$/Bbl	97.18	▲ 0.000	▲ 0.000	▲ 0.000
Heating Oil	cents/Gallon	433.79	▼ -23.340	▲ 36.990	▲ 217.560
Propane, Mt. Bel	cents/Gallon	1.21	▼ -0.011	▼ -0.026	▲ 0.243
Ethane, Mt. Bel	cents/Gallon	0.64	▼ -0.023	▲ 0.036	▲ 0.361
Coal, PRB	\$/MTon	12.30	▲ 0.000	▲ 0.000	▲ 0.000
Coal, PRB	\$/MMBtu	0.70			
Coal, ILB	\$/MTon	31.05	▲ 0.000	▲ 0.000	▲ 0.000
Coal, ILB	\$/MMBtu	1.32			

Nat Gas Term Structure (\$MMBTU)



	JUL 22	AUG 22	SEP 22	OCT 22	NOV 22	DEC 22	JAN 23	FEB 23	MAR 23	APR 23	MAY 23	JUN 23
Henry Hub	\$6.300	\$6.356	\$6.355	\$6.370	\$6.448	\$6.574	\$6.678	\$6.458	\$5.874	\$4.812	\$4.715	\$4.774
JKL	\$37.130	\$36.575	\$36.305	\$37.635	\$38.440	\$38.640	\$37.275	\$31.915	\$29.045	\$25.430	\$25.040	\$25.805
JKL-HHub	\$30.830	\$30.219	\$29.950	\$31.265	\$31.992	\$32.066	\$30.597	\$25.457	\$23.171	\$20.618	\$20.325	\$21.031
TTF	\$41.220	\$41.441	\$42.057	\$42.479	\$42.497	\$42.548	\$42.365	\$41.769	\$39.883	\$32.096	\$28.045	\$27.435
TTF-HHub	\$34.920	\$35.085	\$35.702	\$36.109	\$36.049	\$35.974	\$35.687	\$35.311	\$34.009	\$27.284	\$23.330	\$22.661
NBP	\$22.939	\$31.060	\$37.710	\$39.548	\$43.082	\$43.712	\$43.442	\$43.042	\$39.558	\$31.546	\$27.085	\$25.610
NBP-HHub	\$16.639	\$24.704	\$31.355	\$33.178	\$36.634	\$37.138	\$36.764	\$36.584	\$33.684	\$26.734	\$22.370	\$20.836

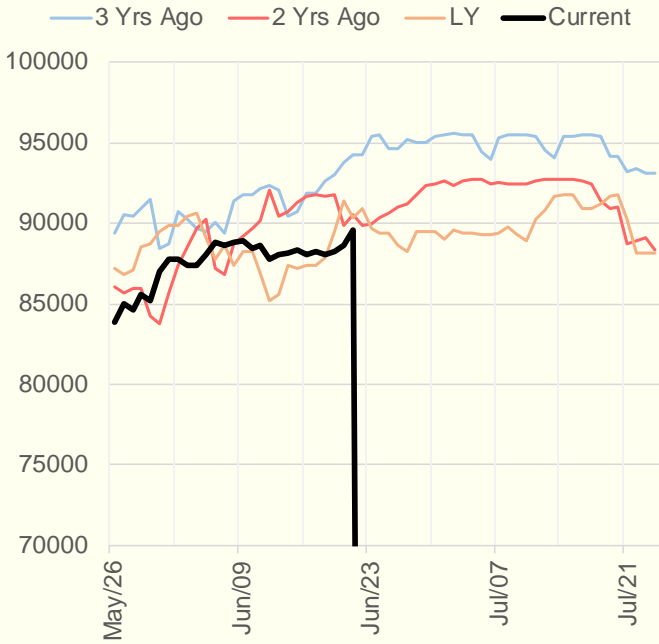
Weather Storage Model - Next 4 Week Forecast



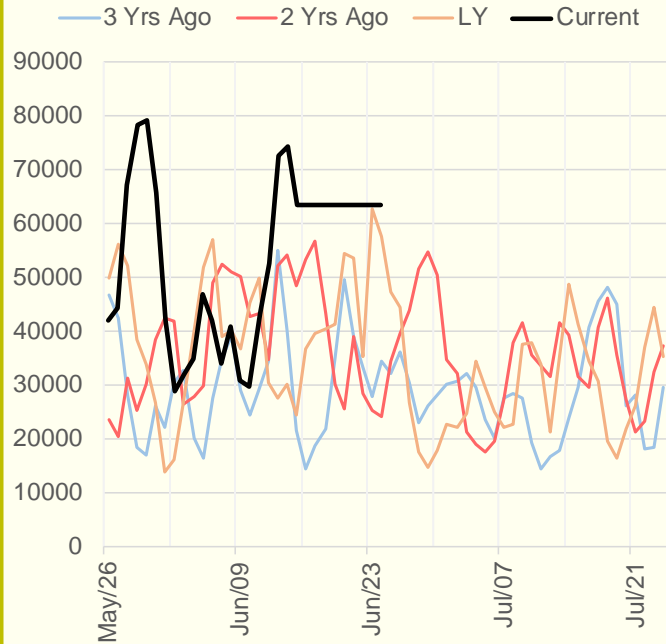
The risk of trading futures and options and other derivatives involves a substantial risk of loss and is not suitable for all persons. Each person must consider whether a particular trade, combination of trades, or strategy is suitable for that person's financial means and objectives. Past results are not necessarily indicative of future results. This communication may contain links to third party websites which are not under the control of and are not maintained by ION Energy Group, and ION Energy Group is not responsible for their content.

96.3

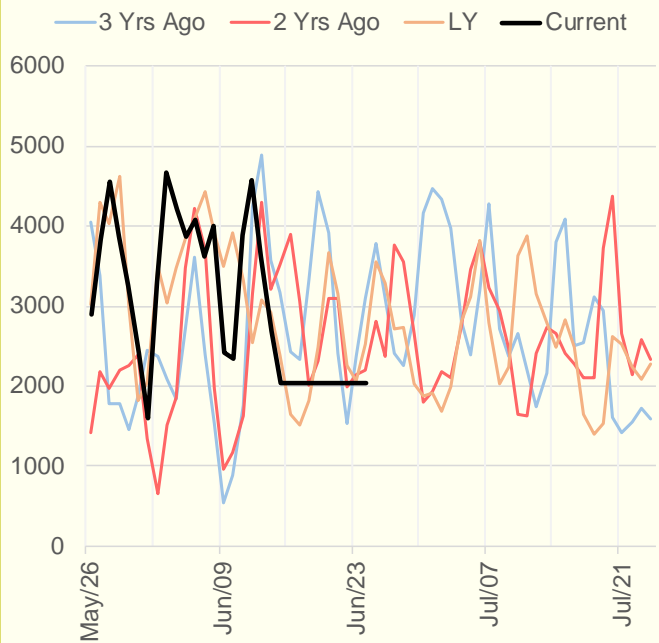
NRC Nuclear Daily Output



US Wind



CALI Wind



TEXAS Wind

