

	Current	Δ from YD	Δ from 7D Avg
Nat Gas Prompt	\$ 9.41	▲ \$ 0.16	▲ \$ 0.48

	Current	Δ from YD	Δ from 7D Avg
WTI Prompt	\$ 89.15	▲ \$ 1.04	▼ \$ (1.5)

	Current	Δ from YD	Δ from 7D Avg
Brent Prompt	\$ 95.06	▲ \$ 1.41	▼ \$ (1.4)

Page Menu

[Short-term Weather Model Outlooks](#)

[Lower 48 Component Models](#)

[Regional S/D Models Storage Projection](#)

[Weather Model Storage Projection](#)

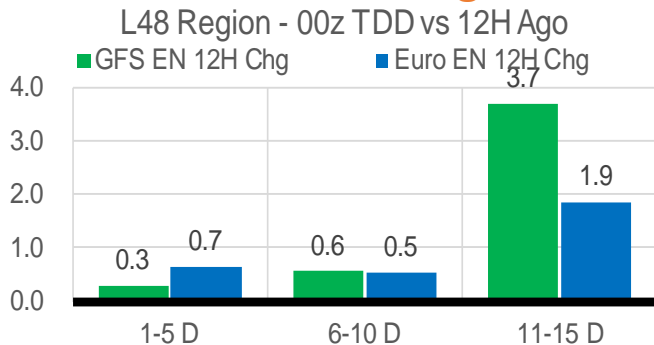
[Supply – Demand Trends](#)

[Nat Gas Options Volume and Open Interest](#)

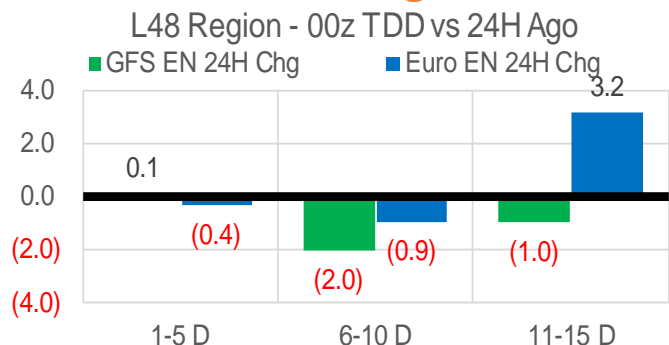
[Nat Gas Futures Open Interest](#)

[Price Summary](#)

Vs. 12H Ago



Vs. 24H Ago



	Current	Δ from YD	Δ from 7D Avg
US Dry Production	98.3	▲ 1.02	▲ 0.03

	Current	Δ from YD	Δ from 7D Avg
US Power Burns	40.2	▼ -0.11	▲ 0.24

	Current	Δ from YD	Δ from 7D Avg
US ResComm	8.3	▲ 0.15	▲ 0.38

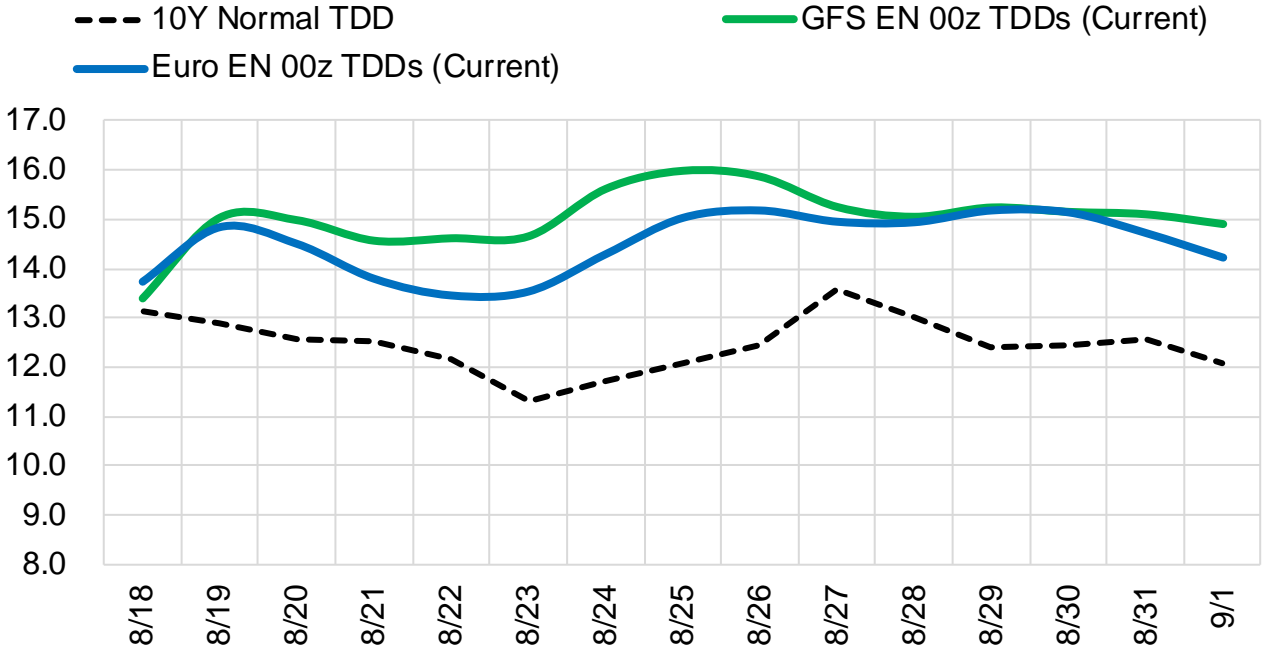
	Current	Δ from YD	Δ from 7D Avg
Canadian Imports	5.4	▲ 0.46	▲ 0.63

	Current	Δ from YD	Δ from 7D Avg
Net LNG Exports	11.3	▲ 0.51	▲ 0.32

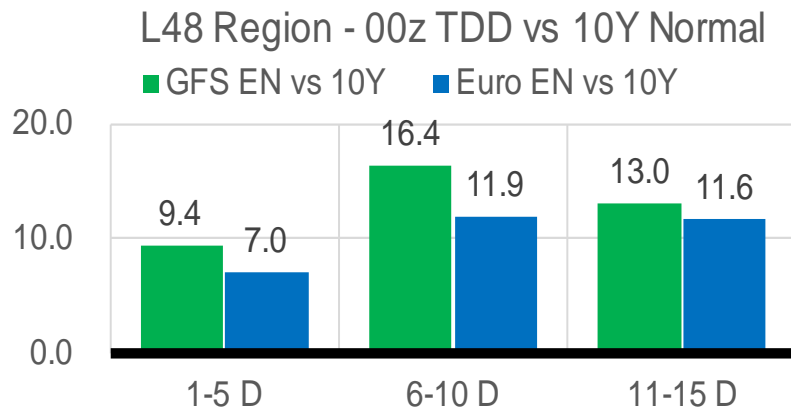
	Current	Δ from YD	Δ from 7D Avg
Mexican Exports	7.2	▲ 0.04	▲ 0.25

Short-term Weather Model Outlooks (00z)

L48 Region



Vs. 10Y Normal



Source: WSI , Bloomberg

Lower 48 Component Models

Daily Balances

	12-Aug	13-Aug	14-Aug	15-Aug	16-Aug	17-Aug	18-Aug	DoD	vs. 7D
Lower 48 Dry Production	98.7	98.7	98.6	98.8	97.2	97.2	98.3	▲ 1.0	▲ 0.0
Canadian Imports	4.9	4.5	4.6	4.7	4.8	4.9	5.4	▲ 0.5	▲ 0.7
L48 Power	40.3	37.1	37.7	40.0	40.6	40.3	40.2	▼ -0.1	▲ 0.8
L48 Residential & Commercial	7.8	7.6	7.6	8.0	8.1	8.2	8.3	▲ 0.2	▲ 0.4
L48 Industrial	21.3	21.2	21.2	21.2	21.3	21.4	21.4	▼ 0.0	▲ 0.1
L48 Lease and Plant Fuel	5.4	5.4	5.4	5.4	5.3	5.3	5.3	▲ 0.0	▼ 0.0
L48 Pipeline Distribution	2.6	2.4	2.4	2.5	2.6	2.6	2.6	▲ 0.0	▲ 0.1
L48 Regional Gas Consumption	77.3	73.7	74.3	77.1	77.9	77.7	77.8	▲ 0.1	▲ 1.4
Net LNG Delivered	11.15	11.28	10.60	10.79	10.70	10.75	11.27	▲ 0.5	▲ 0.4
Total Mexican Exports	7.2	6.9	6.7	6.8	6.9	7.2	7.2	▲ 0.0	▲ 0.3
Implied Daily Storage Activity	8.0	11.5	11.7	8.8	6.5	6.6	7.4		
EIA Reported Daily Storage Activity									
Daily Model Error									

EIA Storage Week Balances

	8-Jul	15-Jul	22-Jul	29-Jul	5-Aug	12-Aug	WoW	vs. 4W
Lower 48 Dry Production	97.2	96.5	97.4	97.7	99.1	98.9	▼ -0.2	▲ 1.2
Canadian Imports	5.6	6.0	6.2	5.9	5.7	5.4	▼ -0.3	▼ -0.6
L48 Power	41.0	42.9	45.5	44.8	44.4	45.7	▲ 1.3	▲ 1.3
L48 Residential & Commercial	8.4	8.4	8.7	8.6	8.3	8.4	▲ 0.1	▼ -0.1
L48 Industrial	20.1	20.5	21.0	19.4	20.6	20.6	▲ 0.0	▲ 0.2
L48 Lease and Plant Fuel	5.3	5.2	5.3	5.3	5.4	5.4	▼ 0.0	▲ 0.1
L48 Pipeline Distribution	2.6	2.7	2.9	2.8	2.8	2.9	▲ 0.1	▲ 0.1
L48 Regional Gas Consumption	77.4	79.7	83.3	80.9	81.4	83.0	▲ 1.5	▲ 1.6
Net LNG Exports	11.2	11.1	10.8	10.7	10.9	10.9	▼ -0.1	▼ 0.0
Total Mexican Exports	6.9	7.0	7.1	6.9	6.9	7.0	▲ 0.1	▲ 0.0
Implied Daily Storage Activity	7.4	4.7	2.3	5.1	5.5	3.4	-2.1	
EIA Reported Daily Storage Activity	8.3	4.6	2.1	5.9	6.3			
Daily Model Error	-0.9	0.2	0.2	-0.8	-0.8			

Monthly Balances

	2Yr Ago Aug-20	LY Aug-21	Apr-22	May-22	Jun-22	Jul-22	MTD Aug-22	MoM	vs. LY
Lower 48 Dry Production	88.9	93.9	95.1	96.0	97.1	97.4	98.7	▲ 1.2	▲ 4.8
Canadian Imports	4.9	5.1	5.8	5.1	5.7	5.9	5.2	▼ -0.7	▲ 0.1
L48 Power	41.0	40.4	25.1	29.7	36.8	43.4	43.5	▲ 0.0	▲ 3.1
L48 Residential & Commercial	7.7	7.9	22.3	12.4	9.0	8.5	8.2	▼ -0.2	▲ 0.3
L48 Industrial	20.8	21.0	20.1	19.8	20.6	20.3	21.0	▲ 0.7	▼ -0.1
L48 Lease and Plant Fuel	4.8	5.1	5.2	5.3	5.2	5.3	5.4	▲ 0.1	▲ 0.3
L48 Pipeline Distribution	2.5	2.6	2.6	2.4	2.5	2.8	2.7	▼ 0.0	▲ 0.2
L48 Regional Gas Consumption	76.9	77.0	75.3	69.6	74.2	80.2	80.8	▲ 0.6	▲ 3.8
Net LNG Exports	4.0	10.5	12.3	12.5	11.2	10.9	10.9	▼ 0.0	▲ 0.4
Total Mexican Exports	6.0	6.9	6.7	7.0	7.1	7.0	7.0	▼ 0.0	▲ 0.1
Implied Daily Storage Activity	6.8	4.7	6.6	12.0	10.3	5.2	5.2		
EIA Reported Daily Storage Activity									
Daily Model Error									

Source: Bloomberg, analytix.ai

Daily Average Generation Data

Nuclear Generation Daily Average - GWh (NRC)

	10-Aug	11-Aug	12-Aug	13-Aug	14-Aug	15-Aug	16-Aug	DoD	vs. 7D
NRC Nuclear Daily Output	91.8	91.9	92.0	92.0	91.0	90.7	90.9	0.2	-0.7
NRC Nuclear Max Capacity	104.9	104.9	104.9	104.9	104.9	104.9	104.9	0.0	0.0
NRC Nuclear Outage	13.1	12.9	12.8	12.8	13.8	14.2	14.0	-0.2	0.7
NRC % Nuclear Cap Utilization	93.3	93.5	93.6	93.6	92.6	92.2	92.4	0.2	-0.7

Wind Generation Daily Average - MWh (EIA)

	10-Aug	11-Aug	12-Aug	13-Aug	14-Aug	15-Aug	16-Aug	DoD	vs. 7D
CALI Wind	1662	1863	2434	2134	2125	1474	841	-632	-1107
TEXAS Wind	5069	3873	4924	4526	7893	12098	7709	-4389	1312
US Wind	18835	26047	33942	34015	27243	33240	26942	-6298	-1945

Generation Daily Average - MWh (EIA)

	10-Aug	11-Aug	12-Aug	13-Aug	14-Aug	15-Aug	16-Aug	DoD	vs. 7D
US Wind	18835	26047	33942	34015	27243	33240	26942	-6298	-1945
US Solar	17128	16426	16007	16901	16940	16560	15324	-1237	-1337
US Petroleum	1410	1185	1065	1045	1012	1012	1130	118	9
US Other	11087	10272	9791	9321	9132	9823	9703	-119	-201
US Coal	119634	112265	111407	106951	107371	111502	114967	3465	3446
US Nuke	94019	94489	94779	94801	93852	93586	93630	44	-625
US Hydro	29285	29663	27973	25813	25392	30876	31775	898	3607
US Gas	258768	247672	225191	196580	193470	217058	227301	10243	4178

See National Wind and Nuclear daily charts

Source: Bloomberg, analytix.ai

Storage Week Average Generation Data

Nuclear Generation Weekly Average - GWh (NRC)

	8-Jul	15-Jul	22-Jul	29-Jul	5-Aug	12-Aug	WoW	WoW Bcf/d Impact
NRC Nuclear Daily Output	90.6	91.2	90.5	90.1	90.6	90.7	0.2	0.0
NRC Nuclear Max Capacity	104.9	104.9	104.9	104.9	104.9	104.9	0.0	
NRC Nuclear Outage	14.2	13.7	14.4	14.8	14.3	14.1	-0.2	
NRC % Nuclear Cap Utilization	92.2	92.7	92.0	91.6	92.1	92.3	0.2	

Wind Generation Weekly Average - MWh (EIA)

	8-Jul	15-Jul	22-Jul	29-Jul	5-Aug	12-Aug	WoW	WoW Bcf/d Impact
CALI Wind	3521	2268	2470	3049	1933	1901	-33	0.0
TEXAS Wind	13920	7264	11182	14533	14443	8762	-5681	1.0
US Wind	42149	34828	40504	44003	43887	32796	-11091	2.0
							-25%	
							-0.4	

Generation Weekly Average - MWh (EIA)

	8-Jul	15-Jul	22-Jul	29-Jul	5-Aug	12-Aug	WoW	WoW Bcf/d Impact
						est.		
US Wind	42149	34828	40504	44003	43887	32796	-11091	2.0
US Solar	19503	18462	18727	18097	17577	17530	-47	0.0
US Petroleum	977	1015	1707	1465	1131	1737	606	-0.1
US Other	9329	9192	10492	10690	10470	10724	254	0.0
US Coal	114442	115852	121563	128742	122297	121630	-667	0.1
US Nuke	93305	93487	92543	92281	92607	92966	359	-0.1
US Hydro	35841	36439	33645	32210	31339	29842	-1497	0.3
US Gas	221887	237759	249149	238167	236187	252199	16012	2.9

See National Wind and Nuclear daily charts

Source: Bloomberg, analytix.ai

Monthly Average Generation Data

Nuclear Generation Monthly Average - GWh (NRC)

	2Yr Ago	LY					MTD		
	Same 30 days	Same 30 days	May-22	Jun-22	Jul-22	Aug-22	Last 30 days	MoM (MTD vs LY)	Last 30 days YoY
	NRC Nuclear Daily Output	90.7	90.9	81.7	88.5	90.6	90.9	90.6	0.3
NRC Nuclear Max Capacity	104.9	104.9	104.9	104.9	104.9	104.9	104.9	0.0	0.0
NRC Nuclear Outage	14.2	14.0	23.2	16.3	14.3	14.0	14.3	-0.3	0.3
NRC % Nuclear Cap Utilization	92.2	92.4	83.0	90.0	92.1	92.4	92.1	0.3	-0.3

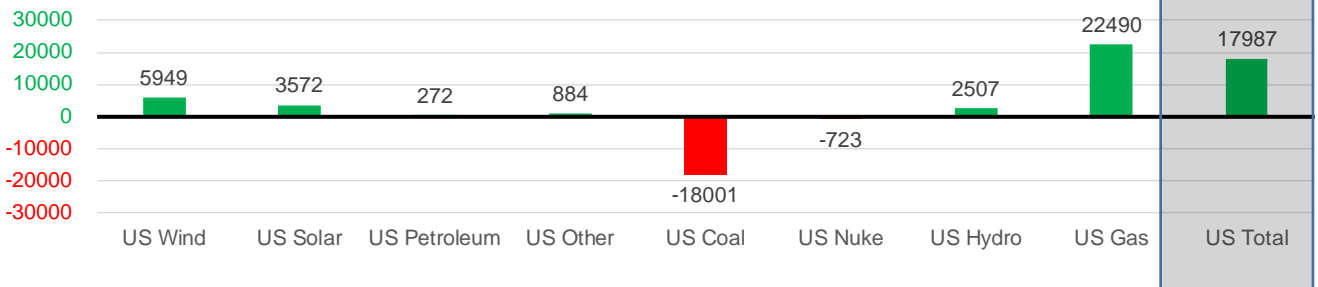
Wind Generation Monthly Average - MWh (EIA)

	2Yr Ago	LY					MTD		
	Same 30 days	Same 30 days	May-22	Jun-22	Jul-22	Aug-22	Last 30 days	MoM (MTD vs LY)	Last 30 days YoY
	CALI Wind	2393	2457	3361	2875	2719	1799	2202	-920
TEXAS Wind	8599	8601	16756	13441	11765	9920	11379	-1846	2779
US Wind	29233	32345	56649	47161	39701	35872	38294	-3828	5949

Generation Monthly Average - MWh (EIA)

	2Yr Ago	LY					MTD		
	Same 30 days	Same 30 days	May-22	Jun-22	Jul-22	Aug-22	Last 30 days	MoM (MTD vs LY)	Last 30 days YoY
	US Wind	29233	32345	56649	47161	39701	35872	38294	▲ 2421.9
US Solar	11555	13818	18211	19386	18593	16959	17390	▲ 431.0	▲ 3572
US Petroleum	1465	1196	518	998	1252	1386	1469	▲ 83	▲ 272
US Other	9955	9559	7724	8495	9961	10259	10443	▲ 184	▲ 884
US Coal	122328	139890	85695	105048	119788	118910	121888	▲ 2979	▼ -18001
US Nuke	92792	93587	85496	89904	92883	93270	92864	▼ -406	▼ -723
US Hydro	29948	28445	31811	37521	34185	30047	30952	▲ 905	▲ 2507
US Gas	228734	215211	157670	199766	235787	236235	237702	▲ 6598	▲ 22490
US Total	523693	533829	443969	507855	548785	544439	551816	▲ 10774	▲ 17987

Last 30 days YoY



See National Wind and Nuclear daily charts

Source: Bloomberg, analytix.ai

Regional S/D Models Storage Projection

Week Ending 12-Aug

	Daily Raw Storage	Daily Adjustment Factor	Daily Average Storage Activity (Adjusted) *	Weekly Adjusted Storage Activity
L48	3.9	-0.3	3.6	25
East	-0.7	2.1	1.4	10
Midwest	3.9	-0.8	3.1	22
Mountain	4.5	-4.3	0.2	2
South Central	-3.8	3.2	-0.6	-4
Pacific	0.0	-0.6	-0.6	-4

*Adjustment Factor is calculated based on historical regional deltas

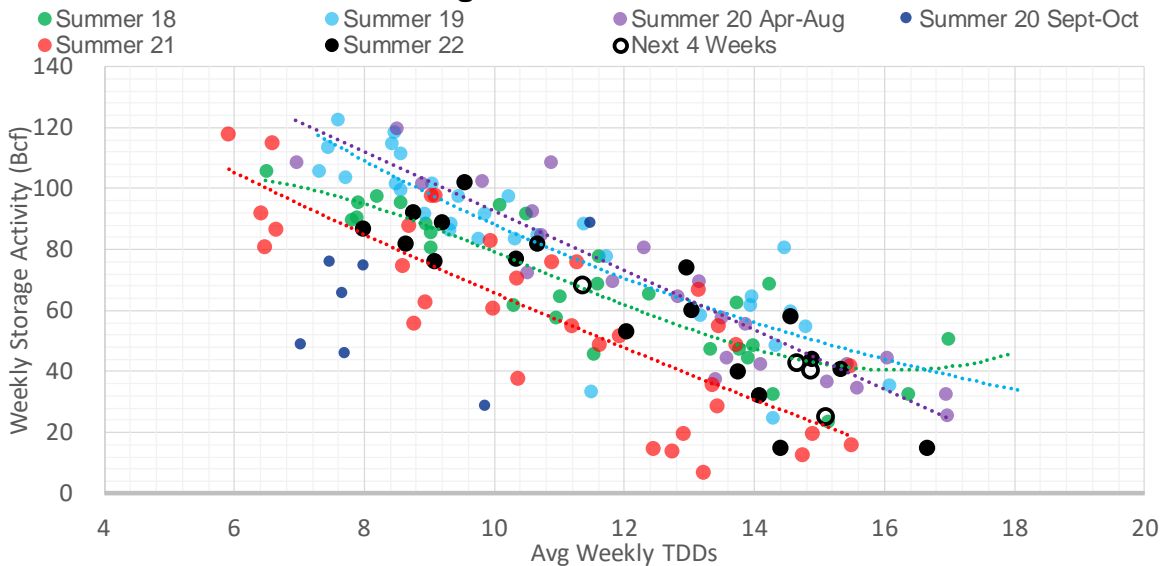
U.S. underground natural gas storage facilities by type (July 2015)



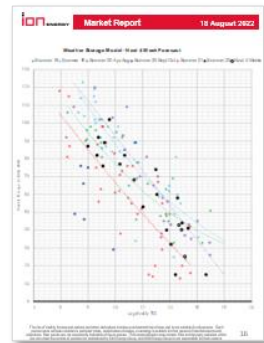
Weather Model Storage Projection

Next report and beyond		
Week Ending	GWDDs	Week Storage Projection
12-Aug	15.1	25
19-Aug	11.4	68
26-Aug	14.7	43
02-Sep	14.9	40

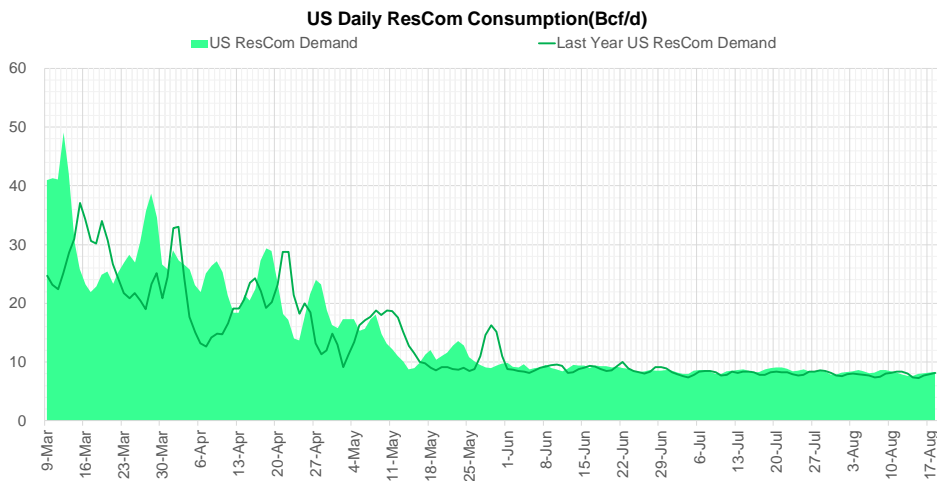
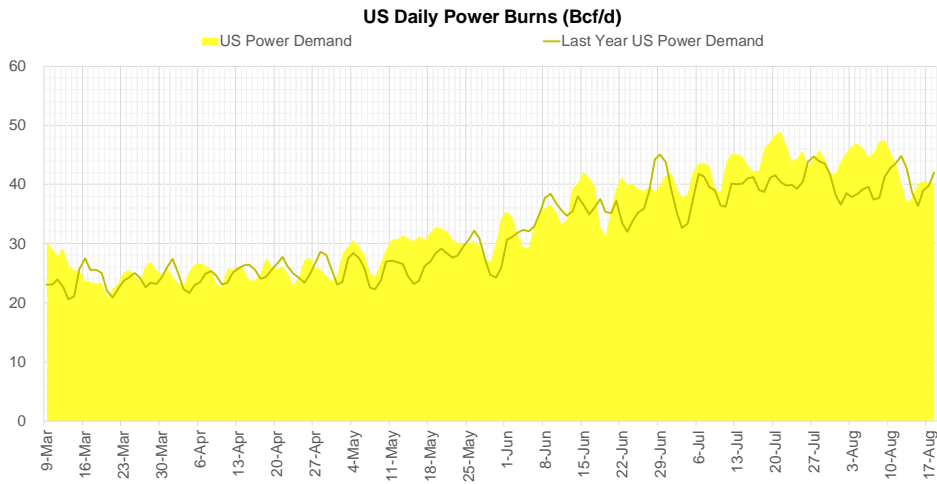
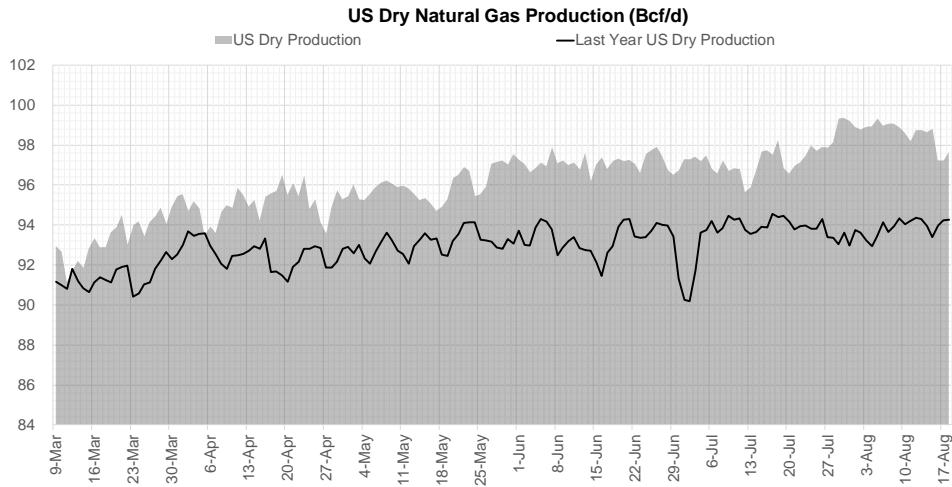
Weather Storage Model - Next 4 Week Forecast



Go to larger image



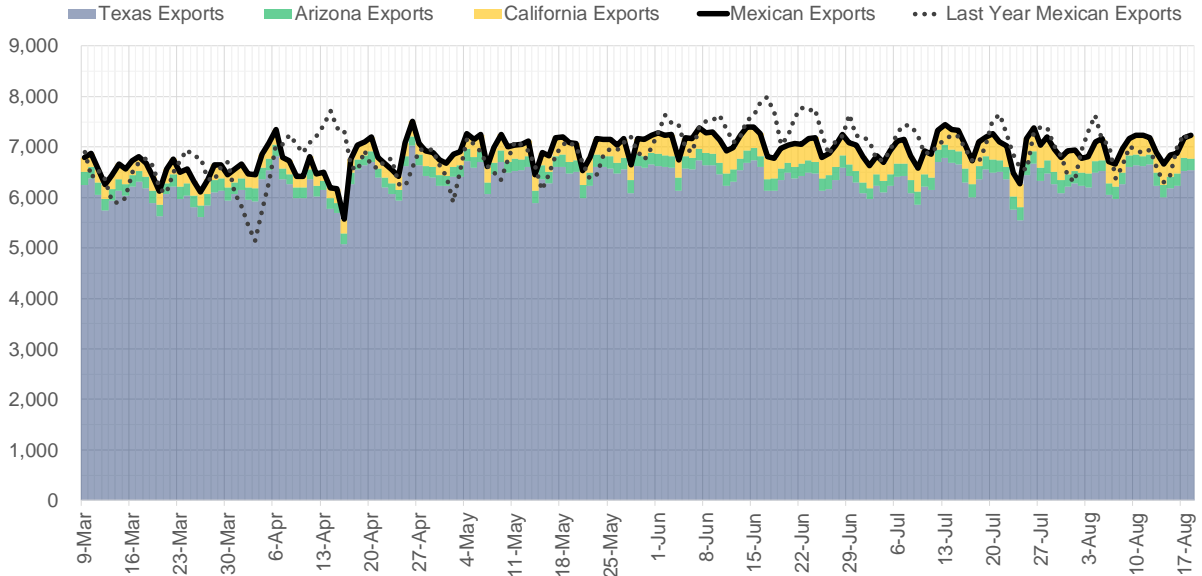
Supply – Demand Trends



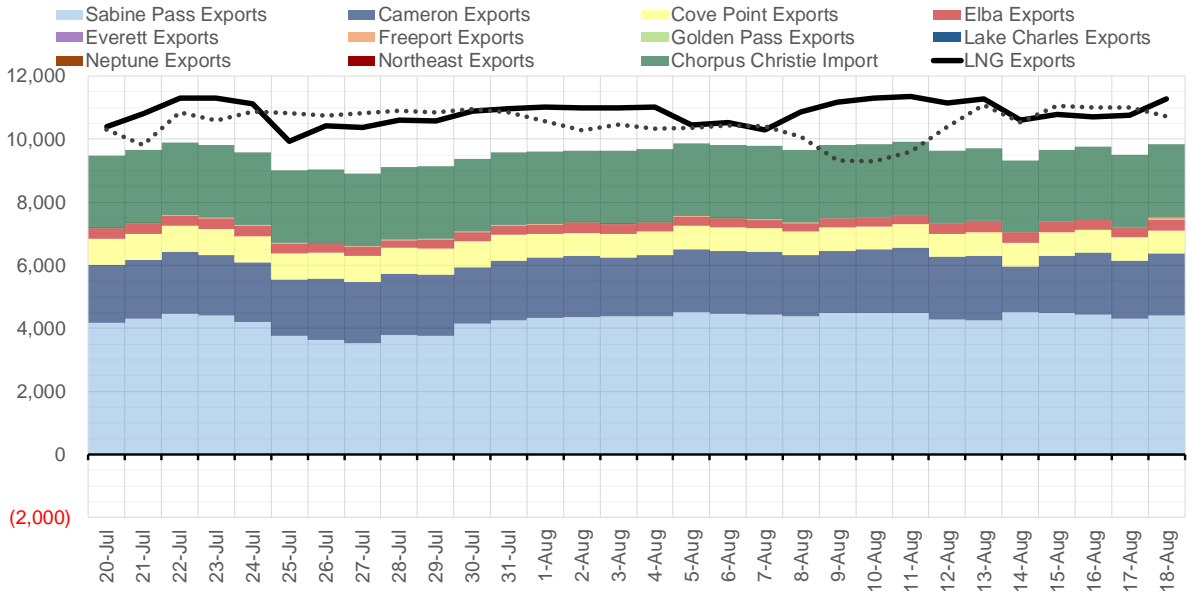
Source: Bloomberg

The risk of trading futures and options and other derivatives involves a substantial risk of loss and is not suitable for all persons. Each person must consider whether a particular trade, combination of trades, or strategy is suitable for that person's financial means and objectives. Past results are not necessarily indicative of future results. This communication may contain links to third party websites which are not under the control of and are not maintained by ION Energy Group, and ION Energy Group is not responsible for their content.

Mexican Exports (MMcf/d)



Net LNG Exports - Last 30 days (MMcf/d)



Source: Bloomberg

The risk of trading futures and options and other derivatives involves a substantial risk of loss and is not suitable for all persons. Each person must consider whether a particular trade, combination of trades, or strategy is suitable for that person's financial means and objectives. Past results are not necessarily indicative of future results. This communication may contain links to third party websites which are not under the control of and are not maintained by ION Energy Group, and ION Energy Group is not responsible for their content.

Nat Gas Options Volume and Open Interest CME and ICE Combined

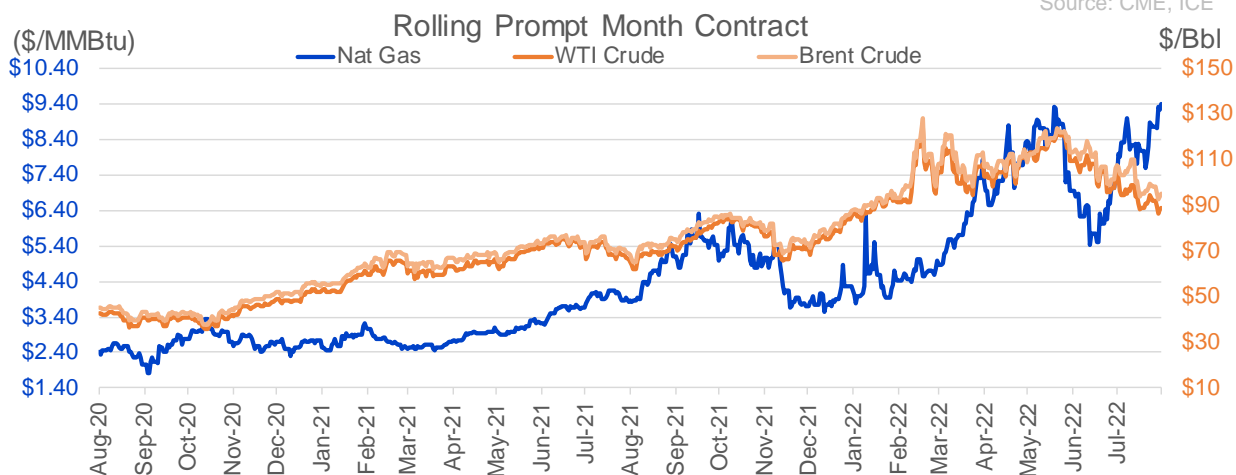
CONTRACT MONTH	CONTRACT YEAR	PUT/CALL	STRIKE	CUMULATIVE VOL	CONTRACT MONTH	CONTRACT YEAR	PUT/CALL	STRIKE	CUMULATIVE OI
10	2022	P	7.00	4284	10	2022	P	3.00	36640
9	2022	C	10.00	3265	10	2022	C	6.00	36016
9	2022	P	8.00	3112	10	2022	P	6.00	31513
10	2023	P	4.00	2380	10	2022	P	5.00	28552
9	2022	C	11.00	2250	10	2022	P	2.50	28113
11	2023	P	4.00	2205	9	2022	C	6.00	24369
9	2023	P	2.50	2200	10	2022	C	5.00	23268
10	2023	P	2.50	2200	3	2023	C	10.00	22460
9	2023	P	4.00	2180	10	2022	P	3.50	22246
9	2022	C	9.00	2089	10	2022	C	12.00	22177
11	2023	P	2.50	2000	10	2022	C	10.00	21816
9	2022	C	9.50	1951	10	2022	P	4.00	21377
10	2022	C	12.00	1770	5	2023	P	2.00	20997
10	2022	P	6.00	1689	9	2022	P	4.00	20463
9	2022	P	8.50	1680	9	2022	P	6.00	20345
9	2022	P	7.75	1631	9	2022	C	10.00	20236
10	2022	P	8.00	1622	11	2022	P	4.00	19985
9	2022	C	13.00	1566	9	2022	C	7.00	19572
12	2022	P	5.00	1415	12	2022	P	5.00	19084
9	2022	C	10.50	1365	10	2023	P	2.50	18425
3	2023	P	5.00	1325	12	2022	C	5.00	18218
3	2023	P	4.00	1306	3	2023	P	3.00	18051
2	2023	C	8.00	1300	9	2022	C	9.00	17433
2	2023	C	9.00	1300	10	2022	C	8.00	17155
11	2023	C	8.00	1150	1	2023	C	10.00	16956
9	2022	P	9.00	1065	10	2022	P	2.00	16759
10	2022	P	4.00	1050	2	2023	C	10.00	16744
10	2022	C	17.00	1005	9	2022	P	3.00	16612
9	2023	C	8.00	1000	4	2023	P	3.00	16109
10	2023	C	8.00	1000	9	2022	C	4.00	15969
1	2023	P	6.00	995	10	2022	P	5.50	15879
11	2022	P	6.00	969	9	2022	P	2.50	15478
11	2022	C	15.00	967	3	2023	C	20.00	15471
9	2022	C	12.00	965	10	2022	P	3.25	15350
9	2022	P	7.50	906	9	2022	C	12.00	15309
10	2022	C	10.00	904	10	2023	P	2.00	15280
2	2023	C	10.00	901	9	2022	P	7.00	15088
10	2022	P	7.50	803	10	2022	C	7.00	15069
10	2022	P	6.50	790	2	2023	C	9.00	14988
11	2022	P	6.50	766	9	2022	P	2.75	14887
1	2023	P	7.00	750	10	2023	P	3.00	14883
10	2022	P	8.50	642	9	2022	C	9.50	14671
11	2022	C	14.00	624	9	2022	P	5.00	14472
9	2022	C	11.50	607	4	2023	P	2.75	14320
9	2022	C	11.25	604	11	2022	C	8.00	14290
3	2023	C	20.00	603	9	2022	P	6.50	14097
10	2022	P	5.50	558	9	2022	P	3.50	14015
11	2022	C	10.00	539	12	2022	C	6.00	13987
11	2022	C	12.00	531	11	2022	C	10.00	13805
					12	2022	C	10	13311

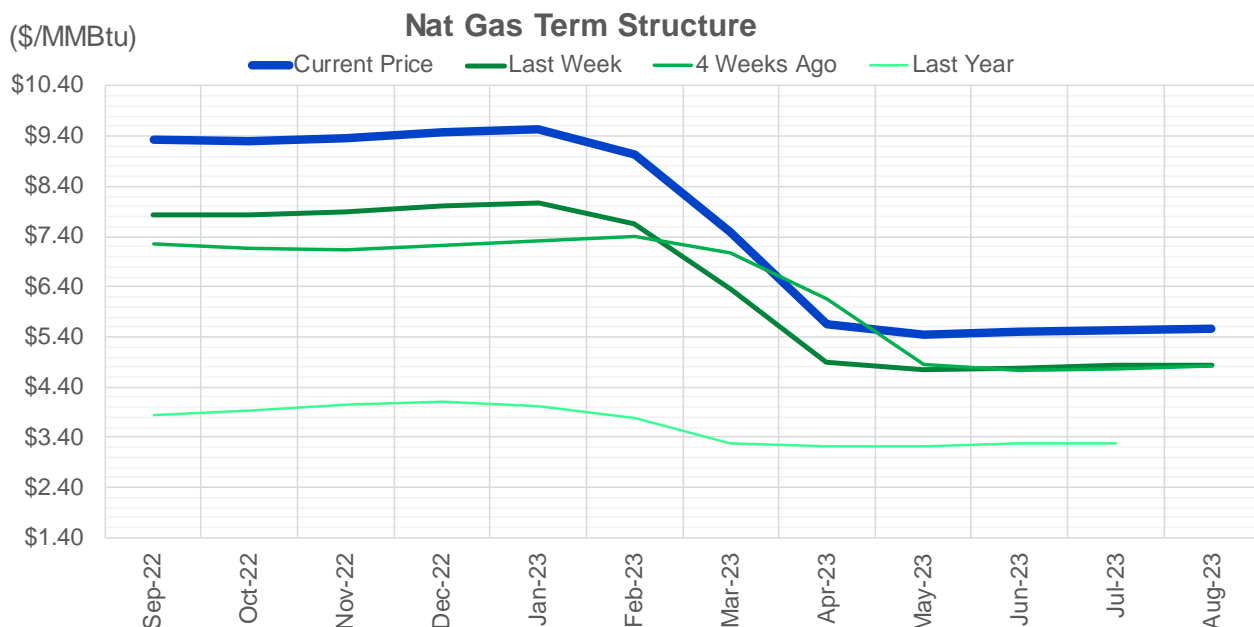
Source: CME, ICE

Nat Gas Futures Open Interest CME and ICE Combined

CME Henry Hub Futures (10,000 MMBtu)				ICE Henry Hub Futures Contract Equivalent (10,000 MM			
	Current	Prior	Daily Change		Current	Prior	Daily Change
SEP 22	52858	59570	-6712	SEP 22	77560	80526	-2966
OCT 22	116192	112889	3303	OCT 22	77955	78462	-506
NOV 22	120038	118885	1153	NOV 22	64957	64886	71
DEC 22	64833	63756	1077	DEC 22	67629	67428	202
JAN 23	84745	83951	794	JAN 23	66318	66221	98
FEB 23	37286	36817	469	FEB 23	61942	61581	362
MAR 23	56300	55804	496	MAR 23	54011	54273	-262
APR 23	70318	69953	365	APR 23	56430	56356	74
MAY 23	73442	73540	-98	MAY 23	54822	54943	-121
JUN 23	23045	23043	2	JUN 23	47041	47382	-341
JUL 23	23746	23946	-200	JUL 23	46474	46779	-305
AUG 23	19043	19046	-3	AUG 23	45120	45247	-127
SEP 23	19968	19818	150	SEP 23	43962	44271	-308
OCT 23	49022	47929	1093	OCT 23	51220	51544	-325
NOV 23	13057	13020	37	NOV 23	45090	45045	45
DEC 23	12493	12494	-1	DEC 23	41194	41156	38
JAN 24	18876	18256	620	JAN 24	40118	40117	2
FEB 24	7880	7856	24	FEB 24	30526	30507	19
MAR 24	17648	17720	-72	MAR 24	34999	34993	7
APR 24	14294	14254	40	APR 24	28561	28546	15
MAY 24	6845	6876	-31	MAY 24	27349	27334	15
JUN 24	2588	2603	-15	JUN 24	24311	24274	37
JUL 24	2418	2441	-23	JUL 24	24258	24220	38
AUG 24	3310	3339	-29	AUG 24	23847	23817	31
SEP 24	1948	1961	-13	SEP 24	23784	23747	37
OCT 24	8935	8936	-1	OCT 24	27213	27190	23
NOV 24	4814	4843	-29	NOV 24	24885	24863	22
DEC 24	7890	7785	105	DEC 24	28185	28143	42
JAN 25	16554	16566	-12	JAN 25	21749	21248	501
FEB 25	974	997	-23	FEB 25	14318	14335	-18

Source: CME, ICE





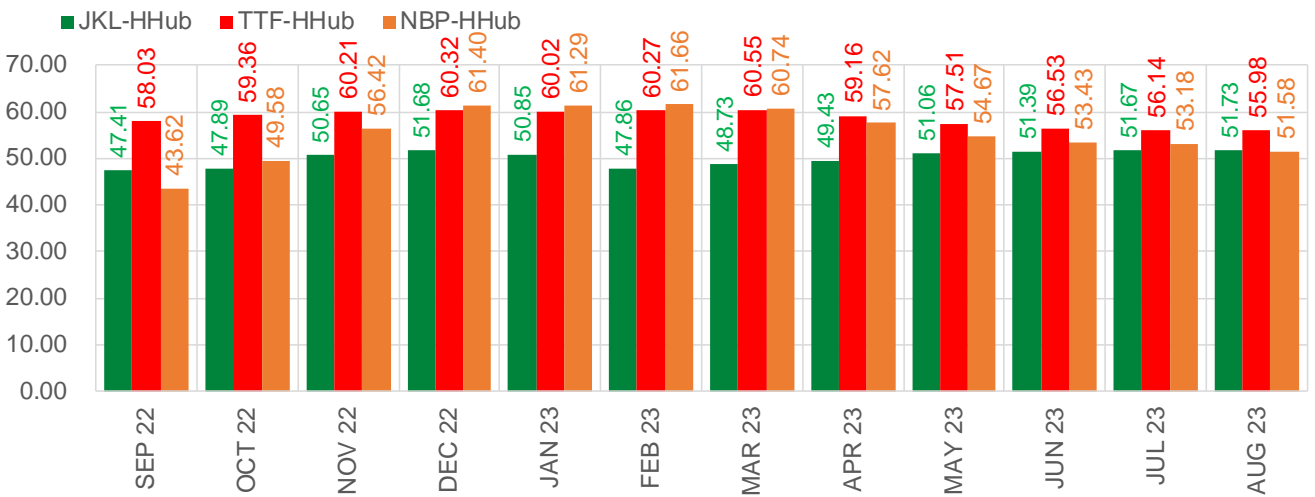
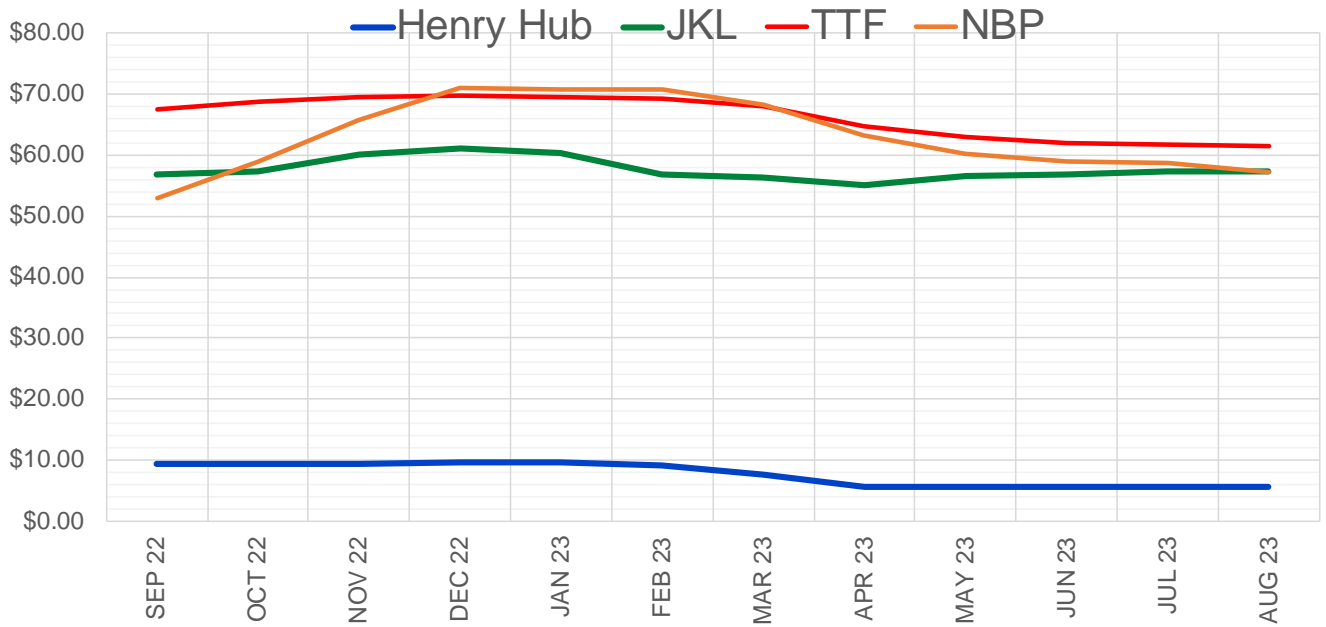
	Sep-22	Oct-22	Nov-22	Dec-22	Jan-23	Feb-23	Mar-23	Apr-23	May-23	Jun-23	Jul-23	Aug-23
Current Price	\$9.329	\$9.311	\$9.370	\$9.472	\$9.532	\$9.019	\$7.501	\$5.638	\$5.446	\$5.492	\$5.540	\$5.550
Last Week	\$7.833	\$7.825	\$7.902	\$8.018	\$8.080	\$7.649	\$6.355	\$4.890	\$4.742	\$4.789	\$4.835	\$4.848
vs. Last Week	\$1.496	\$1.486	\$1.468	\$1.454	\$1.452	\$1.370	\$1.146	\$0.748	\$0.704	\$0.703	\$0.705	\$0.702
4 Weeks Ago	\$7.264	\$7.150	\$7.130	\$7.210	\$7.313	\$7.399	\$7.089	\$6.146	\$4.854	\$4.726	\$4.775	\$4.826
vs. 4 Weeks Ago	\$2.065	\$2.161	\$2.240	\$2.262	\$2.219	\$1.620	\$0.412	-\$0.508	\$0.592	\$0.766	\$0.765	\$0.724
Last Year	\$3.837	\$3.851	\$3.925	\$4.045	\$4.106	\$4.031	\$3.785	\$3.274	\$3.207	\$3.236	\$3.270	\$3.279
vs. Last Year	\$5.492	\$5.460	\$5.445	\$5.427	\$5.426	\$4.988	\$3.716	\$2.364	\$2.239	\$2.256	\$2.270	\$2.271

	Units	Cash Settled	Prompt Settle	Cash to Prompt
AGT Citygate	\$/MMBtu	8.43	7.72	-0.71
TETCO M3	\$/MMBtu	8.37	7.14	-1.23
FGT Zone 3	\$/MMBtu	8.45	9.20	0.75
Zone 6 NY	\$/MMBtu	8.45	7.17	-1.28
Chicago Citygate	\$/MMBtu	8.91	7.86	-1.05
Michcon	\$/MMBtu	8.89	7.83	-1.06
Columbia TCO Pool	\$/MMBtu	8.28	7.16	-1.12
Ventura	\$/MMBtu	5.95	7.78	1.83
Rockies/Opal	\$/MMBtu	8.80	7.65	-1.16
El Paso Permian Basin	\$/MMBtu	8.61	7.09	-1.52
Socal Citygate	\$/MMBtu	12.01	8.87	-3.14
Malin	\$/MMBtu	8.68	7.87	-0.81
Houston Ship Channel	\$/MMBtu	8.81	7.74	-1.07
Henry Hub Cash	\$/MMBtu	9.51	7.65	-1.86
AECO Cash	C\$/GJ	2.74	4.45	1.71
Station2 Cash	C\$/GJ	-0.02	7.54	7.56
Dawn Cash	C\$/GJ	8.86	7.92	-0.94

Source: CME, Bloomberg

	Units	Current Price	vs. Last Week	vs. 4 Weeks Ago	vs. Last Year
NatGas Jul21/Oct21	\$/MMBtu	2.224	▲ 0.000	▲ 0.000	▲ 1.975
NatGas Oct21/Nov21	\$/MMBtu	0.361	▲ 0.000	▲ 0.000	▲ 0.288
NatGas Oct21/Jan22	\$/MMBtu	-1.817	▲ 0.000	▲ 0.000	▼ -2.071
NatGas Apr22/Oct22	\$/MMBtu	3.892	▲ 1.035	▲ 1.358	▲ 3.876
WTI Crude	\$/Bbl	88.11	▼ -3.820	▼ -14.150	▲ 22.650
Brent Crude	\$/Bbl	93.65	▼ -3.750	▼ -13.270	▲ 25.420
Fuel Oil, NY Harbour 1%	\$/Bbl	97.18	▲ 0.000	▲ 0.000	▲ 0.000
Heating Oil	cents/Gallon	361.74	▲ 20.710	▲ 1.310	▲ 159.620
Propane, Mt. Bel	cents/Gallon	1.07	▼ -0.003	▼ -0.073	▼ -0.052
Ethane, Mt. Bel	cents/Gallon	0.60	▲ 0.031	▲ 0.023	▲ 0.266
Coal, PRB	\$/MTon	12.30	▲ 0.000	▲ 0.000	▲ 0.000
Coal, PRB	\$/MMBtu	0.70			
Coal, ILB	\$/MTon	31.05	▲ 0.000	▲ 0.000	▲ 0.000
Coal, ILB	\$/MMBtu	1.32			

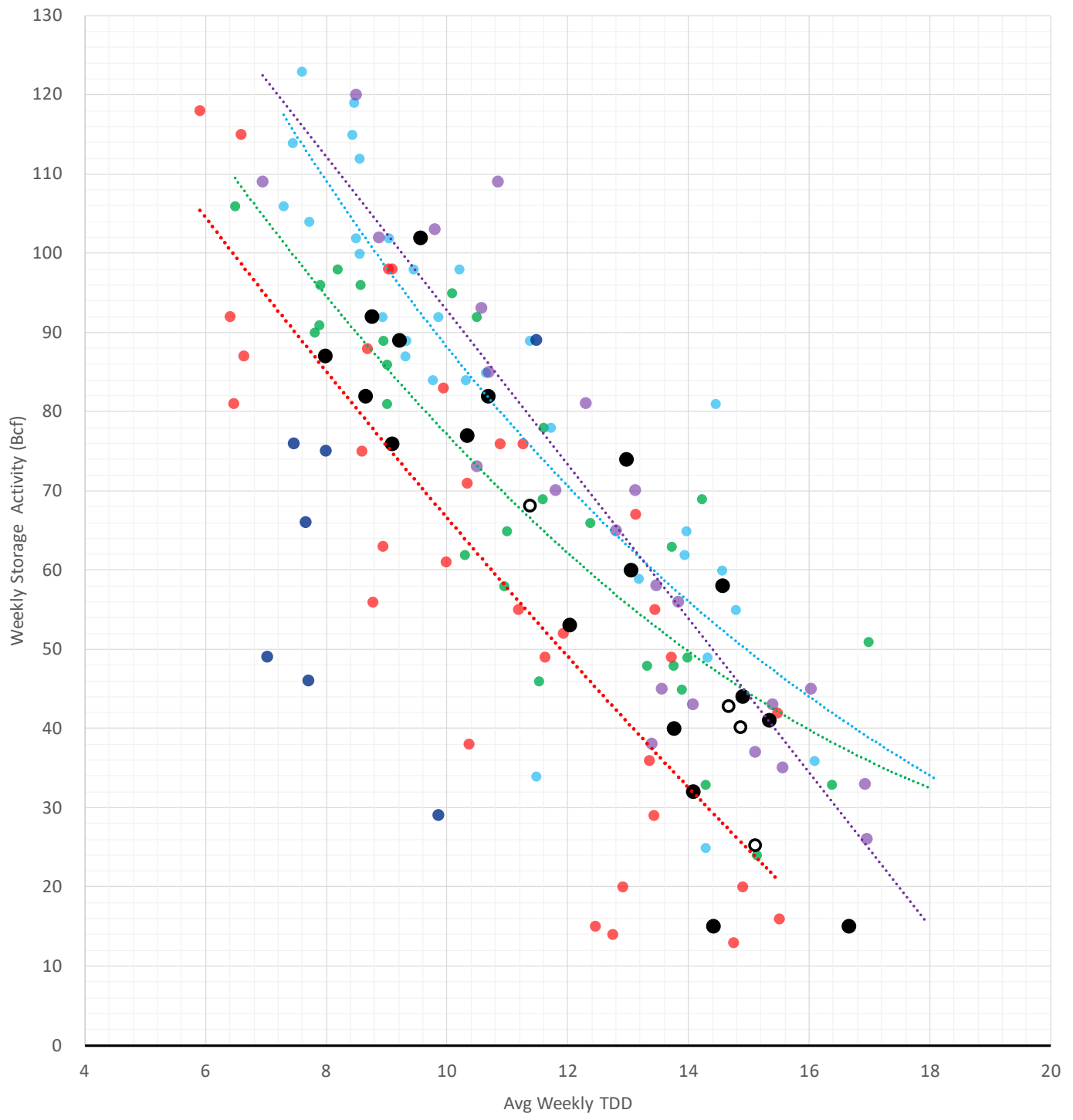
Nat Gas Term Structure (\$MMBTU)



	SEP 22	OCT 22	NOV 22	DEC 22	JAN 23	FEB 23	MAR 23	APR 23	MAY 23	JUN 23	JUL 23	AUG 23
Henry Hub	\$9.407	\$9.387	\$9.454	\$9.560	\$9.628	\$9.096	\$7.565	\$5.673	\$5.491	\$5.537	\$5.586	\$5.604
JKL	\$56.820	\$57.280	\$60.105	\$61.235	\$60.475	\$56.955	\$56.295	\$55.105	\$56.550	\$56.925	\$57.255	\$57.335
JKL-HHHub	\$47.413	\$47.893	\$50.651	\$51.675	\$50.847	\$47.859	\$48.730	\$49.432	\$51.059	\$51.388	\$51.669	\$51.731
TTF	\$67.440	\$68.749	\$69.660	\$69.882	\$69.645	\$69.363	\$68.114	\$64.836	\$62.998	\$62.071	\$61.721	\$61.579
TTF-HHHub	\$58.033	\$59.362	\$60.206	\$60.322	\$60.017	\$60.267	\$60.549	\$59.163	\$57.507	\$56.534	\$56.135	\$55.975
NBP	\$53.027	\$58.971	\$65.873	\$70.960	\$70.919	\$70.758	\$68.301	\$63.295	\$60.162	\$58.968	\$58.770	\$57.179
NBP-HHHub	\$43.620	\$49.584	\$56.419	\$61.400	\$61.291	\$61.662	\$60.736	\$57.622	\$54.671	\$53.431	\$53.184	\$51.575

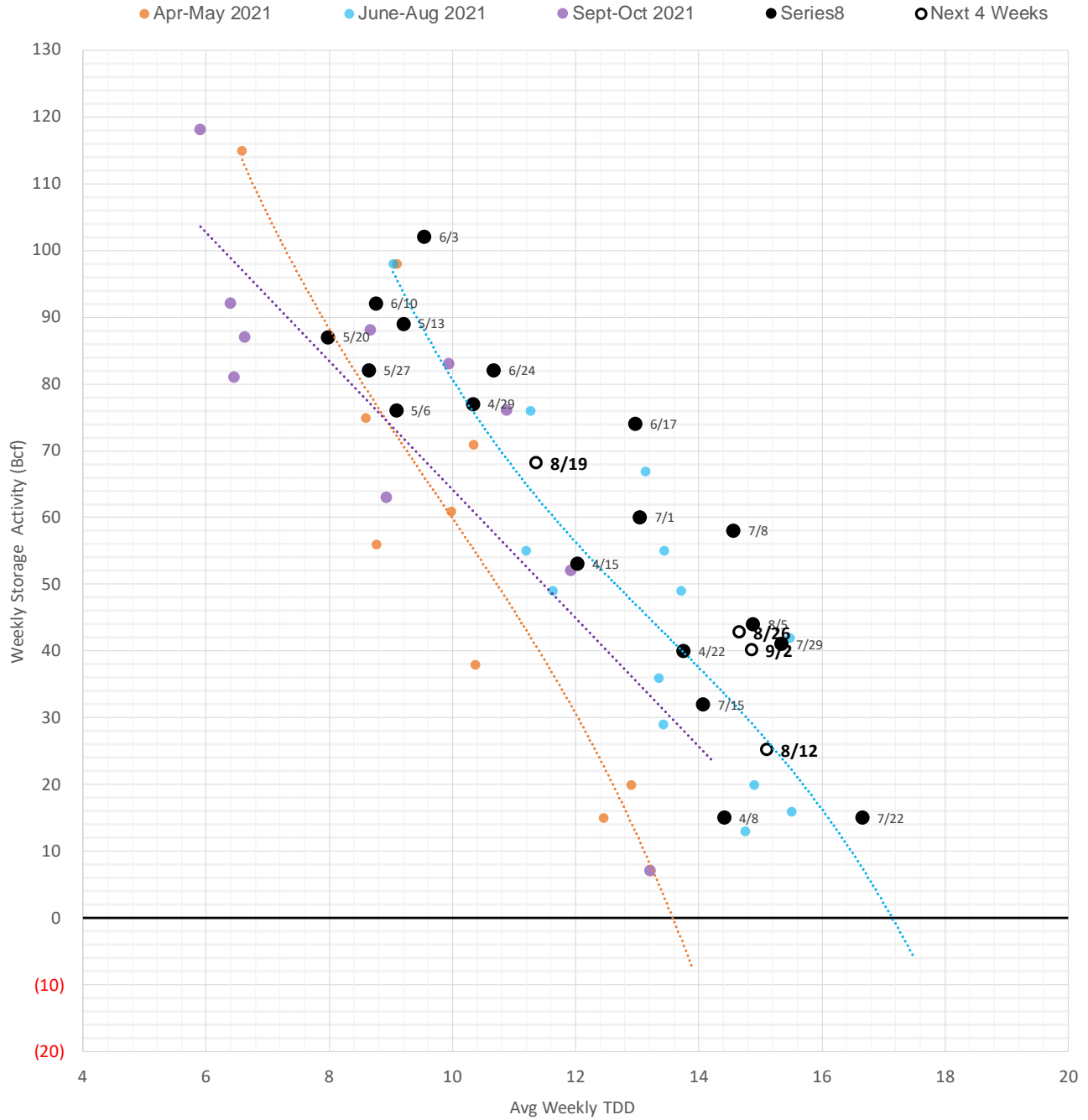
Weather Storage Model - Next 4 Week Forecast

● Summer 18 ● Summer 19 ● Summer 20 Apr-Aug ● Summer 20 Sept-Oct ● Summer 21 ● Summer 22 ○ Next 4 Weeks



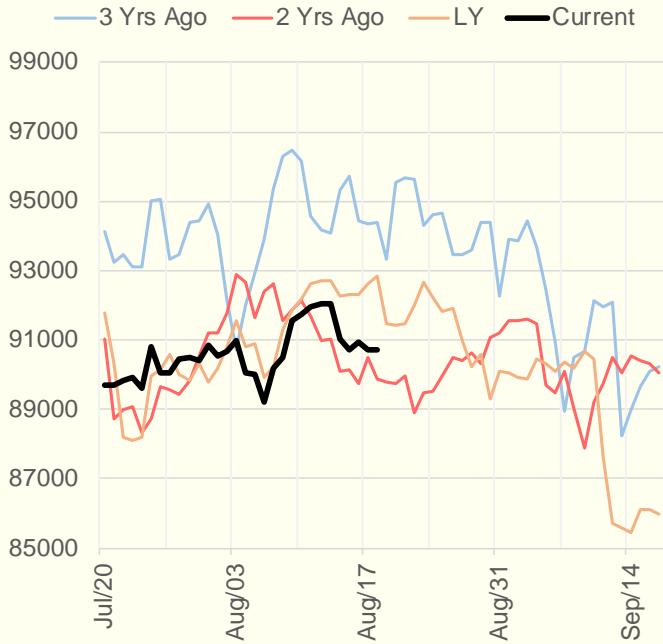
The risk of trading futures and options and other derivatives involves a substantial risk of loss and is not suitable for all persons. Each person must consider whether a particular trade, combination of trades, or strategy is suitable for that person's financial means and objectives. Past results are not necessarily indicative of future results. This communication may contain links to third party websites which are not under the control of and are not maintained by ION Energy Group, and ION Energy Group is not responsible for their content.

Weather Storage Model - Next 4 Week Forecast

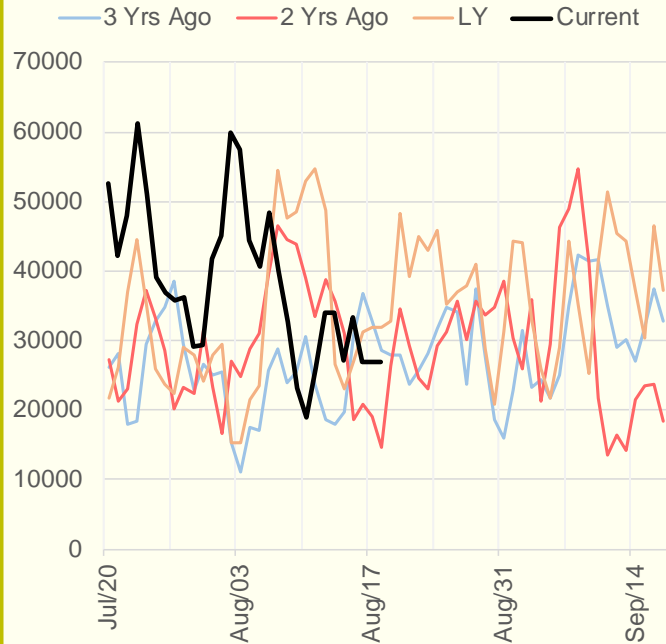


The risk of trading futures and options and other derivatives involves a substantial risk of loss and is not suitable for all persons. Each person must consider whether a particular trade, combination of trades, or strategy is suitable for that person's financial means and objectives. Past results are not necessarily indicative of future results. This communication may contain links to third party websites which are not under the control of and are not maintained by ION Energy Group, and ION Energy Group is not responsible for their content.

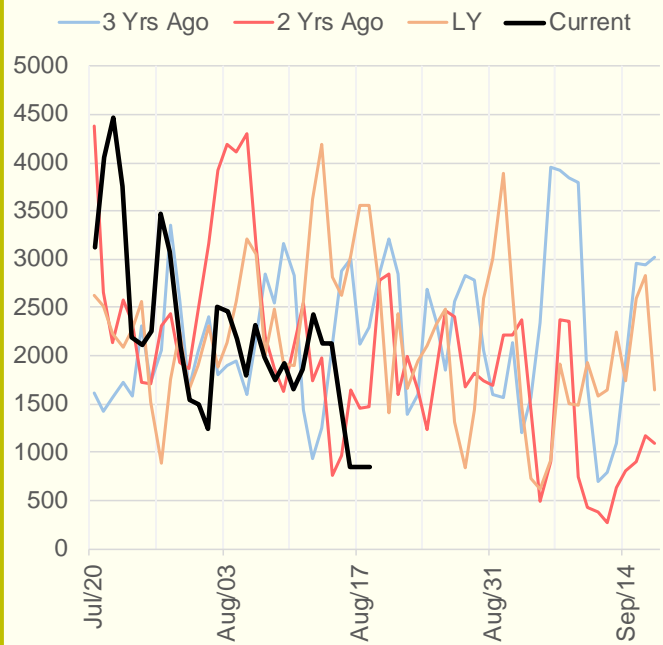
NRC Nuclear Daily Output



US Wind



CALI Wind



TEXAS Wind

