

	Current	Δ from YD	Δ from 7D Avg
Nat Gas Prompt	\$ 9.74 ▲	\$ 0.06 ▲	\$ 0.39

	Current	Δ from YD	Δ from 7D Avg
WTI Prompt	\$ 92.02 ▲	\$ 1.79 ▲	\$ 2.4

	Current	Δ from YD	Δ from 7D Avg
Brent Prompt	\$ 97.98 ▲	\$ 1.50 ▲	\$ 2.4

Page Menu

[Short-term Weather Model Outlooks](#)

[Lower 48 Component Models](#)

[Regional S/D Models Storage Projection](#)

[Weather Model Storage Projection](#)

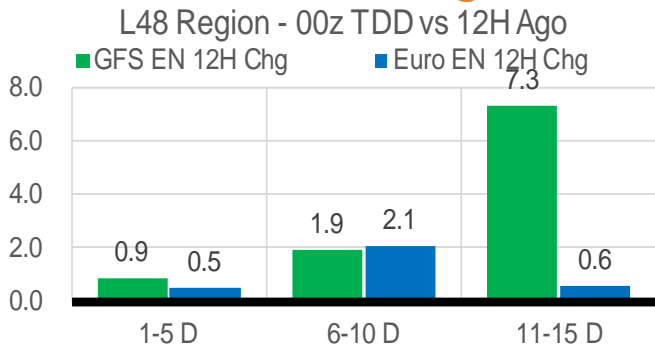
[Supply – Demand Trends](#)

[Nat Gas Options Volume and Open Interest](#)

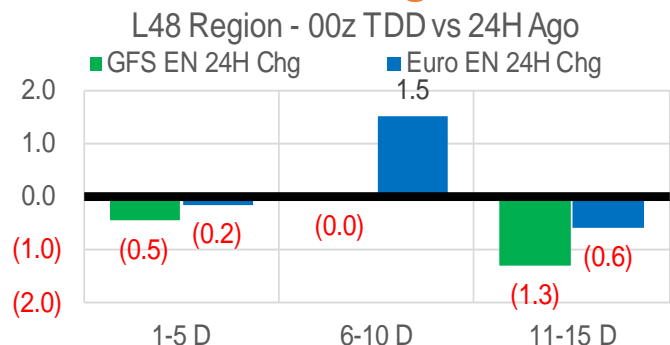
[Nat Gas Futures Open Interest](#)

[Price Summary](#)

Vs. 12H Ago



Vs. 24H Ago



	Current	Δ from YD	Δ from 7D Avg
US Dry Production	97.8 ▼	-1.43 ▼	-0.59

	Current	Δ from YD	Δ from 7D Avg
US Power Burns	41.3 ▲	0.74 ▲	0.95

	Current	Δ from YD	Δ from 7D Avg
US ResComm	8.1 ▲	0.05 ▲	0.12

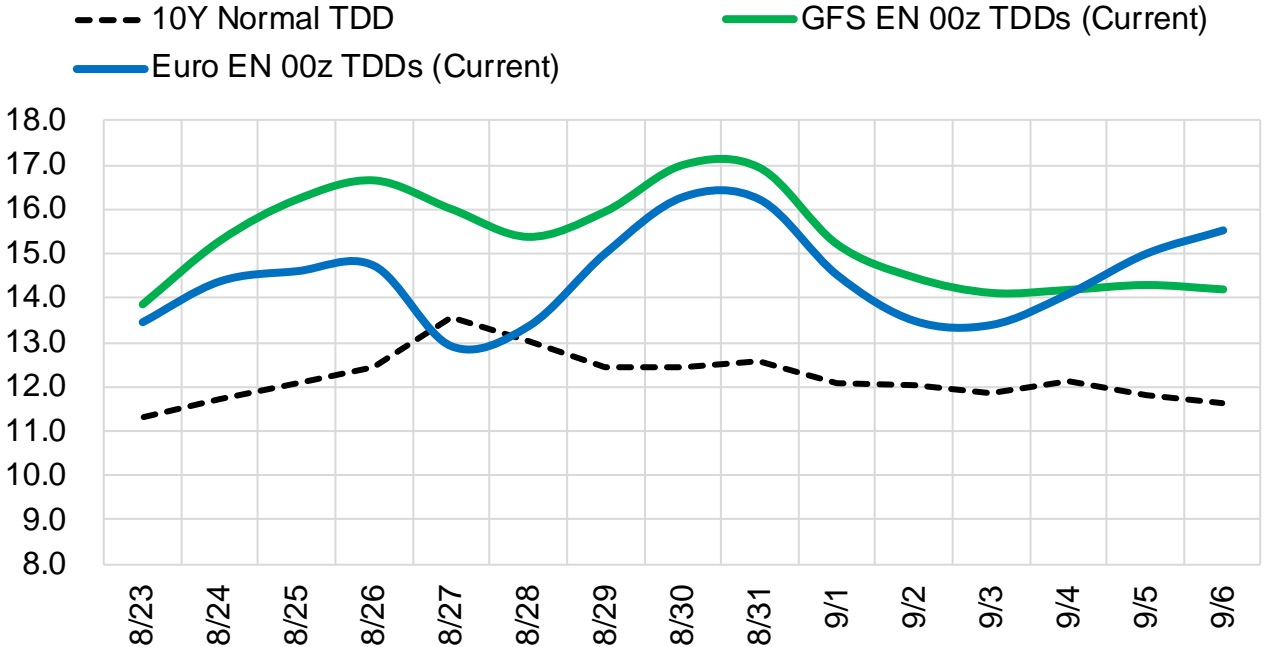
	Current	Δ from YD	Δ from 7D Avg
Canadian Imports	5.7 ▲	0.50 ▲	0.63

	Current	Δ from YD	Δ from 7D Avg
Net LNG Exports	11.1 ▲	0.30 ▲	0.15

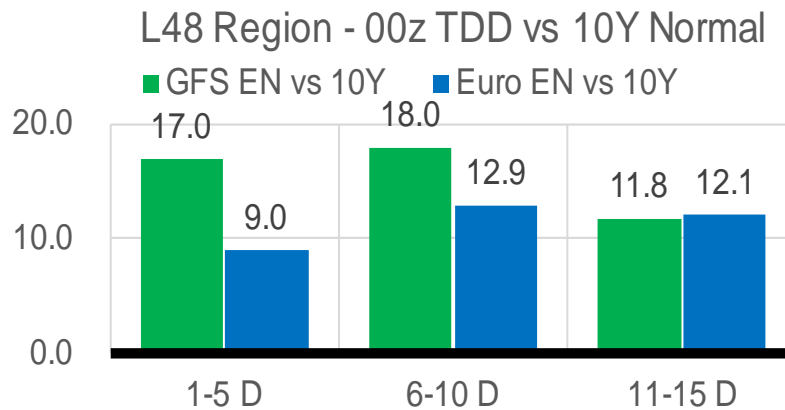
	Current	Δ from YD	Δ from 7D Avg
Mexican Exports	6.9 ▼	-0.08 ▼	0.05

Short-term Weather Model Outlooks (00z)

L48 Region



Vs. 10Y Normal



Source: WSI , Bloomberg

Lower 48 Component Models

Daily Balances

	17-Aug	18-Aug	19-Aug	20-Aug	21-Aug	22-Aug	23-Aug	DoD	vs. 7D
Lower 48 Dry Production	97.3	98.4	98.2	99.2	99.1	99.2	97.8	▼ -1.4	▼ -0.8
Canadian Imports	4.9	5.2	5.3	5.1	5.2	5.2	5.7	▲ 0.5	▲ 0.6
L48 Power	40.8	40.8	40.7	39.5	39.2	40.5	41.3	▲ 0.7	▲ 1.0
L48 Residential & Commercial	8.2	8.2	8.1	7.8	7.8	8.1	8.1	▲ 0.0	▲ 0.1
L48 Industrial	21.4	21.4	21.4	21.5	21.5	21.4	21.5	▲ 0.0	▲ 0.0
L48 Lease and Plant Fuel	5.3	5.3	5.3	5.4	5.4	5.4	5.3	▼ -0.1	▼ -0.1
L48 Pipeline Distribution	2.6	2.6	2.6	2.5	2.5	2.6	2.6	▲ 0.0	▲ 0.1
L48 Regional Gas Consumption	78.2	78.4	78.1	76.7	76.4	78.1	78.8	▲ 0.8	▲ 1.2
Net LNG Delivered	10.74	11.14	11.04	11.14	10.97	10.79	11.08	▲ 0.3	▲ 0.1
Total Mexican Exports	7.2	7.0	6.9	6.6	6.5	7.0	6.9	▼ -0.1	▲ 0.0
Implied Daily Storage Activity	6.0	7.0	7.5	9.9	10.4	8.6	6.7		
EIA Reported Daily Storage Activity									
Daily Model Error									

EIA Storage Week Balances

	15-Jul	22-Jul	29-Jul	5-Aug	12-Aug	19-Aug	WoW	vs. 4W
Lower 48 Dry Production	96.5	97.4	97.7	99.1	98.8	98.1	▼ -0.6	▼ -0.1
Canadian Imports	6.0	6.2	5.9	5.7	5.4	4.8	▼ -0.6	▼ -1.0
L48 Power	42.9	45.5	44.8	44.4	45.7	39.6	▼ -6.1	▼ -5.5
L48 Residential & Commercial	8.4	8.7	8.6	8.3	8.4	7.9	▼ -0.4	▼ -0.5
L48 Industrial	20.5	21.0	19.4	20.6	21.6	21.3	▼ -0.3	▲ 0.7
L48 Lease and Plant Fuel	5.2	5.3	5.3	5.4	5.4	5.3	▼ 0.0	▲ 0.0
L48 Pipeline Distribution	2.7	2.9	2.8	2.8	2.9	2.5	▼ -0.3	▼ -0.3
L48 Regional Gas Consumption	79.7	83.3	80.9	81.5	84.0	76.7	▼ -7.3	▼ -5.7
Net LNG Exports	11.1	10.8	10.7	10.9	10.9	10.9	▲ 0.1	▲ 0.1
Total Mexican Exports	7.0	7.1	6.9	6.9	7.0	7.0	▼ -0.1	▼ 0.0
Implied Daily Storage Activity	4.7	2.3	5.1	5.4	2.3	8.3	6.0	
EIA Reported Daily Storage Activity	4.6	2.1	5.9	6.3	2.6			
Daily Model Error	0.2	0.2	-0.8	-0.9	-0.3			

Monthly Balances

	2Yr Ago Aug-20	LY Aug-21	Apr-22	May-22	Jun-22	Jul-22	MTD Aug-22	MoM	vs. LY
Lower 48 Dry Production	88.9	93.9	95.1	96.0	97.1	97.4	98.6	▲ 1.2	▲ 4.7
Canadian Imports	4.9	5.1	5.8	5.1	5.7	5.9	5.2	▼ -0.7	▲ 0.1
L48 Power	41.0	40.4	25.1	29.7	36.8	43.4	42.7	▼ -0.7	▲ 2.4
L48 Residential & Commercial	7.7	7.9	22.3	12.4	9.0	8.5	8.2	▼ -0.3	▲ 0.3
L48 Industrial	20.8	21.0	20.1	19.8	20.6	20.3	21.4	▲ 1.1	▲ 0.3
L48 Lease and Plant Fuel	4.8	5.1	5.2	5.3	5.2	5.3	5.4	▲ 0.1	▲ 0.3
L48 Pipeline Distribution	2.5	2.6	2.6	2.4	2.5	2.8	2.7	▼ -0.1	▲ 0.1
L48 Regional Gas Consumption	76.9	77.0	75.3	69.6	74.2	80.2	80.4	▲ 0.2	▲ 3.4
Net LNG Exports	4.0	10.5	12.3	12.5	11.2	10.9	10.9	▼ 0.0	▲ 0.4
Total Mexican Exports	6.0	6.9	6.7	7.0	7.1	7.0	6.9	▼ -0.1	▲ 0.1
Implied Daily Storage Activity	6.8	4.7	6.6	12.0	10.3	5.2	5.6		
EIA Reported Daily Storage Activity									
Daily Model Error									

Source: Bloomberg, analytix.ai

Daily Average Generation Data

Nuclear Generation Daily Average - GWh (NRC)

	15-Aug	16-Aug	17-Aug	18-Aug	19-Aug	20-Aug	21-Aug	DoD	vs. 7D
NRC Nuclear Daily Output	90.7	90.9	90.7	91.1	91.1	91.1	91.1	0.0	0.1
NRC Nuclear Max Capacity	104.9	104.9	104.9	104.9	104.9	104.9	104.9	0.0	0.0
NRC Nuclear Outage	14.2	14.0	14.2	13.8	13.8	13.8	13.8	0.0	-0.1
NRC % Nuclear Cap Utilization	92.2	92.4	92.2	92.6	92.6	92.6	92.6	0.0	0.1

Wind Generation Daily Average - MWh (EIA)

	15-Aug	16-Aug	17-Aug	18-Aug	19-Aug	20-Aug	21-Aug	DoD	vs. 7D
CALI Wind	1474	841	1732	2933	2514	1909	3062	1153	1162
TEXAS Wind	12098	7709	7381	5441	5915	10405	7764	-2641	-395
US Wind	33478	26838	19860	22799	30531	32451	24663	-7787	-2996

Generation Daily Average - MWh (EIA)

	15-Aug	16-Aug	17-Aug	18-Aug	19-Aug	20-Aug	21-Aug	DoD	vs. 7D
US Wind	33478	26838	19860	22799	30531	32451	24663	-7787	-2996
US Solar	16614	15290	16438	16280	15241	15318	15007	-311	-857
US Petroleum	1012	1129	1014	1041	1019	1058	1013	-45	-32
US Other	9834	9708	9630	9931	9973	9875	9417	-458	-408
US Coal	115032	112257	113249	109818	107291	104735	108175	3440	-2222
US Nuke	93586	93630	93674	93829	93374	91702	92047	344	-1253
US Hydro	31028	30989	31458	31726	31861	28116	26168	-1948	-4695
US Gas	217603	226991	229412	224823	218825	210073	206401	-3672	-14887

See National Wind and Nuclear daily charts

Source: Bloomberg, analytix.ai

Storage Week Average Generation Data

Nuclear Generation Weekly Average - GWh (NRC)

	15-Jul	22-Jul	29-Jul	5-Aug	12-Aug	19-Aug	WoW	WoW Bcf/d Impact
NRC Nuclear Daily Output	91.2	90.5	90.1	90.6	90.7	91.2	0.5	-0.1
NRC Nuclear Max Capacity	104.9	104.9	104.9	104.9	104.9	104.9	0.0	
NRC Nuclear Outage	13.7	14.4	14.8	14.3	14.1	13.7	-0.5	
NRC % Nuclear Cap Utilization	92.7	92.0	91.6	92.1	92.3	92.8	0.5	

Wind Generation Weekly Average - MWh (EIA)

	15-Jul	22-Jul	29-Jul	5-Aug	12-Aug	19-Aug	WoW	WoW Bcf/d Impact
CALI Wind	2268	2470	3049	1933	1901	1953	52	0.0
TEXAS Wind	7264	11182	14533	14443	8762	7139	-1622	0.3
US Wind	34828	40504	44003	43887	32973	28358	-4615	0.8
							-14%	
							-0.2	

Generation Weekly Average - MWh (EIA)

	15-Jul	22-Jul	29-Jul	5-Aug	12-Aug	19-Aug	WoW	WoW Bcf/d Impact
							est.	
US Wind	34828	40504	44003	43887	32973	28358	-4615	0.8
US Solar	18462	18727	18097	17577	17555	16592	-963	0.2
US Petroleum	1015	1707	1465	1131	1737	1045	-692	0.1
US Other	9191	10492	10690	10470	10725	9725	-1000	0.2
US Coal	115849	121563	128742	122297	122575	111349	-11226	2.0
US Nuke	93487	92543	92281	92607	92966	94021	1056	-0.2
US Hydro	36439	33645	32210	31339	30225	29505	-720	0.1
US Gas	237759	249149	238167	236187	252386	216829	-35556	-6.4

See National Wind and Nuclear daily charts

Source: Bloomberg, analytix.ai

Monthly Average Generation Data

Nuclear Generation Monthly Average - GWh (NRC)

	2Yr Ago	LY					MTD		
	Same 30 days	Same 30 days	May-22	Jun-22	Jul-22	Aug-22	Last 30 days	MoM (MTD vs LY)	Last 30 days YoY
	NRC Nuclear Daily Output	90.7	91.3	81.7	88.5	90.6	90.9	90.8	0.3
NRC Nuclear Max Capacity	104.9	104.9	104.9	104.9	104.9	104.9	104.9	0.0	0.0
NRC Nuclear Outage	14.2	13.5	23.2	16.3	14.3	14.0	14.1	-0.3	0.6
NRC % Nuclear Cap Utilization	92.2	92.9	83.0	90.0	92.1	92.4	92.3	0.3	-0.6

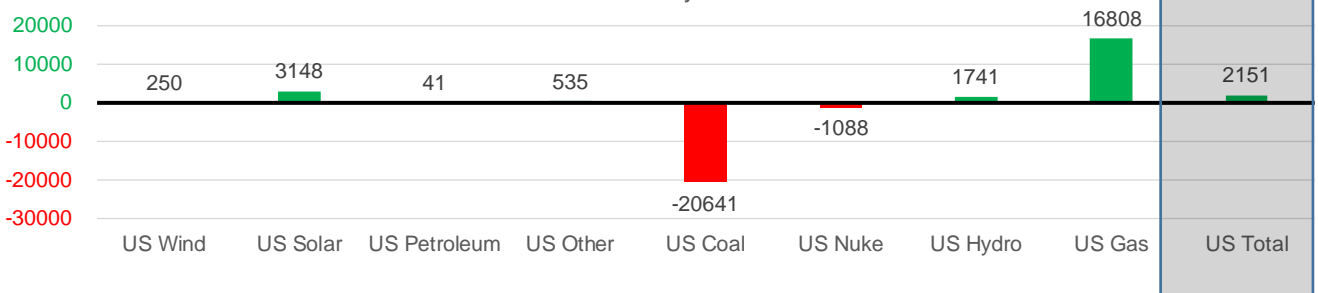
Wind Generation Monthly Average - MWh (EIA)

	2Yr Ago	LY					MTD		
	Same 30 days	Same 30 days	May-22	Jun-22	Jul-22	Aug-22	Last 30 days	MoM (MTD vs LY)	Last 30 days YoY
	CALI Wind	2286	2404	3361	2875	2719	2130	2168	-589
TEXAS Wind	8661	9530	16756	13441	11765	9373	10307	-2393	778
US Wind	29103	33793	56649	47161	39701	33616	34043	-6085	250

Generation Monthly Average - MWh (EIA)

	2Yr Ago	LY					MTD		
	Same 30 days	Same 30 days	May-22	Jun-22	Jul-22	Aug-22	Last 30 days	MoM (MTD vs LY)	Last 30 days YoY
	US Wind	29103	33793	56649	47161	39701	33616	34043	▲ 426.8
US Solar	11096	13821	18212	19386	18593	16730	16969	▲ 239.4	▲ 3148
US Petroleum	1328	1220	518	998	1252	1298	1261	▼ -37	▲ 41
US Other	9891	9695	7723	8530	9961	10160	10230	▲ 70	▲ 535
US Coal	121256	138931	85695	105075	119788	116559	118290	▲ 1732	▼ -20641
US Nuke	92919	94027	85496	89904	92883	93057	92939	▼ -118	▼ -1088
US Hydro	29576	28465	31811	37521	34185	29703	30206	▲ 504	▲ 1741
US Gas	223825	214955	157670	199821	235787	230662	231763	▲ 2816	▲ 16808
US Total	516812	534657	443971	507971	551806	533305	536808	▲ 5205	▲ 2151

Last 30 days YoY



See National Wind and Nuclear daily charts

Source: Bloomberg, analytix.ai

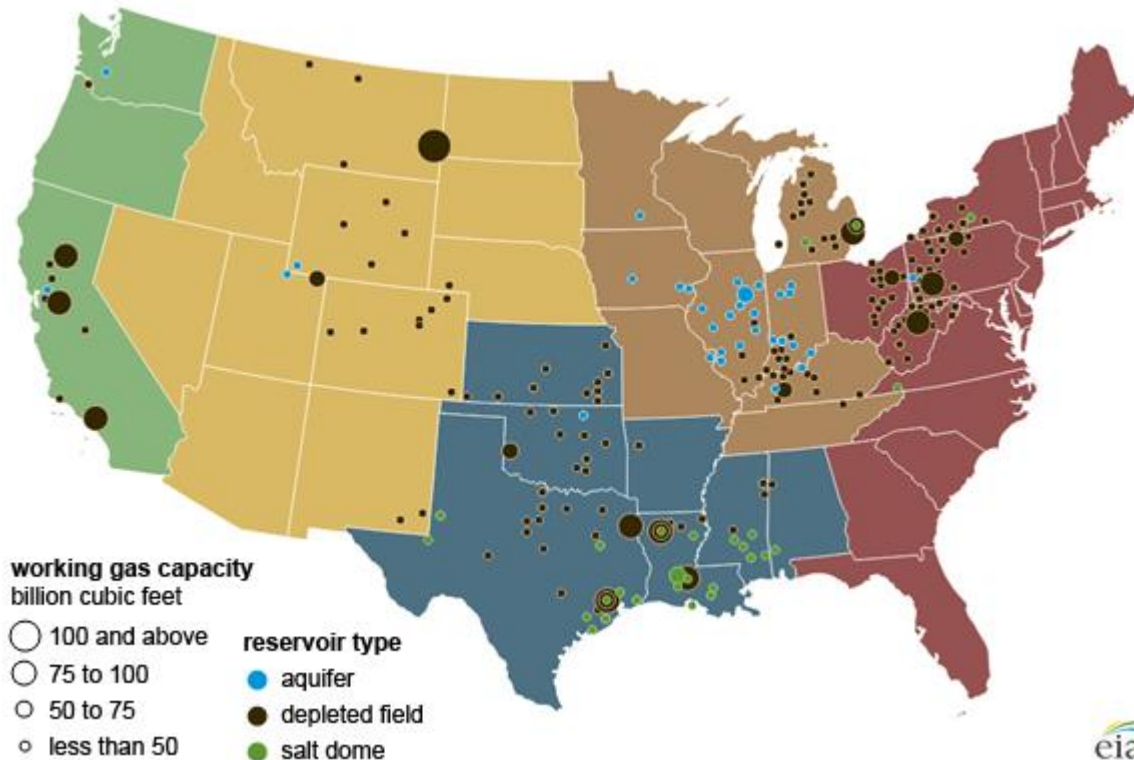
Regional S/D Models Storage Projection

Week Ending 19-Aug

	Daily Raw Storage	Daily Adjustment Factor	Daily Average Storage Activity (Adjusted) *	Weekly Adjusted Storage Activity
L48	8.6	-0.1	8.5	59
East	1.5	2.1	3.6	25
Midwest	4.9	-0.8	4.1	29
Mountain	4.5	-4.1	0.4	3
South Central	-2.2	3.1	0.9	6
Pacific	-0.1	-0.5	-0.6	-4

*Adjustment Factor is calculated based on historical regional deltas

U.S. underground natural gas storage facilities by type (July 2015)

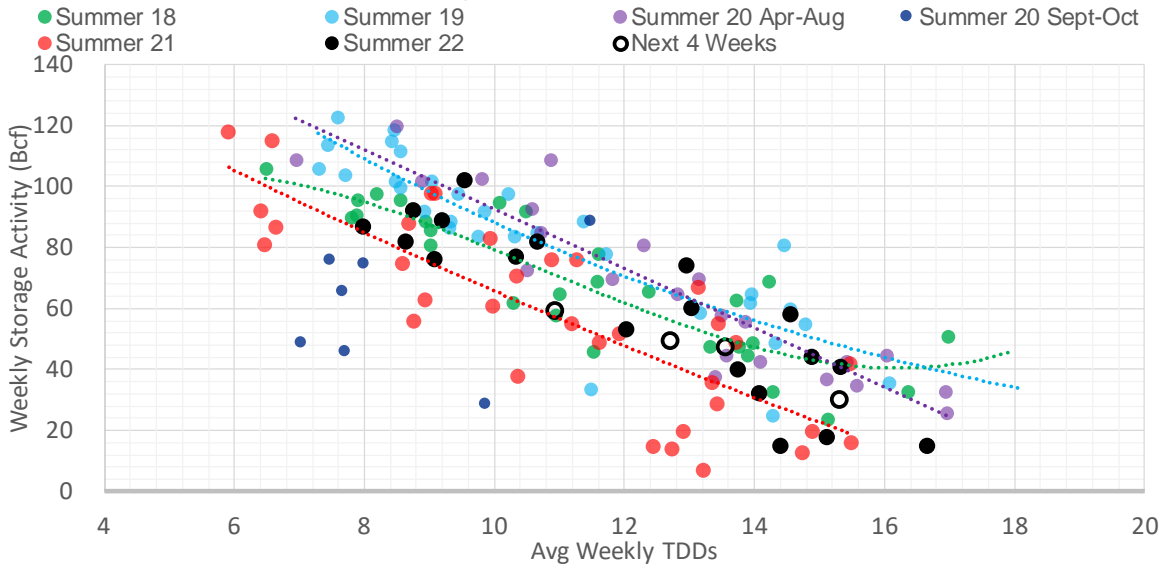


Weather Model Storage Projection

Next report
and beyond

Week Ending	GWDDs	Week Storage Projection
19-Aug	10.9	59
26-Aug	13.6	47
02-Sep	15.3	30
09-Sep	12.7	49

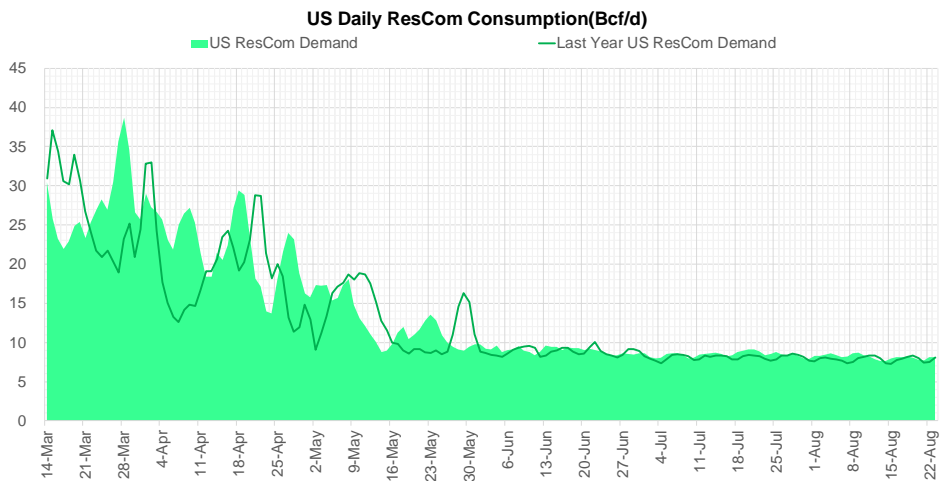
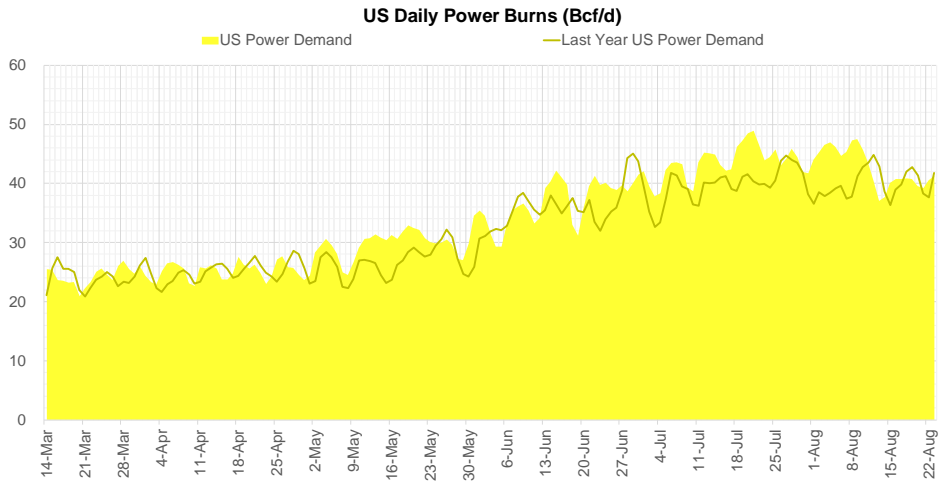
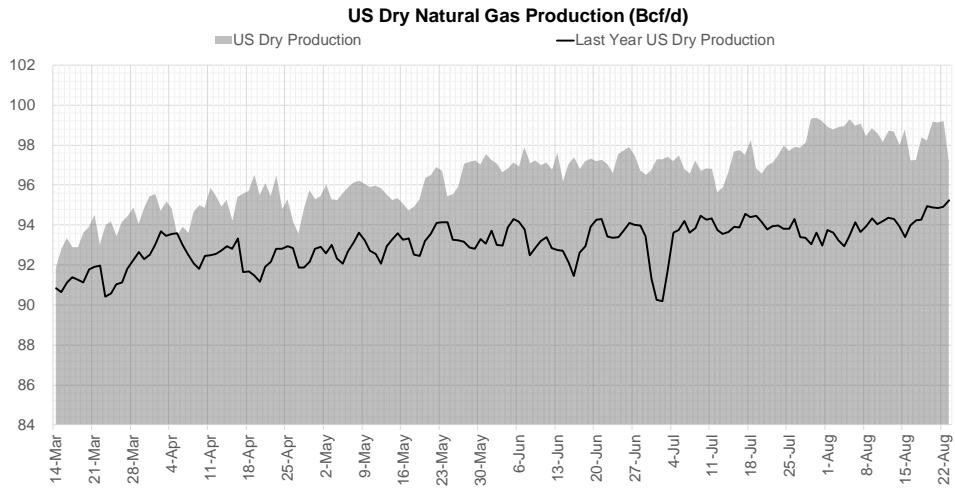
Weather Storage Model - Next 4 Week Forecast



[Go to larger image](#)



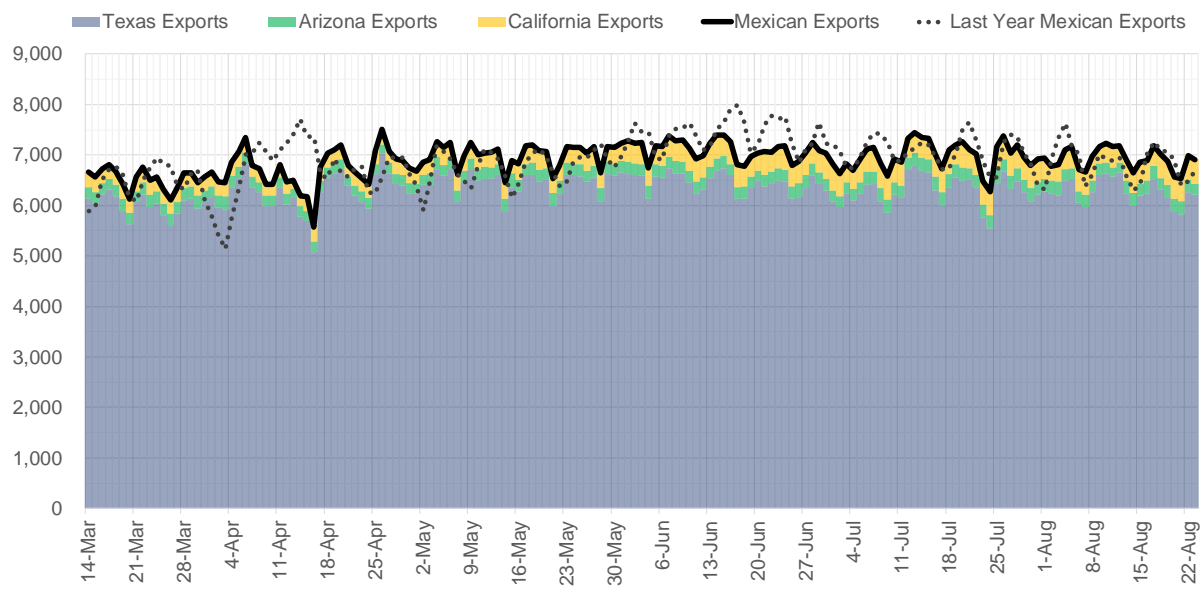
Supply – Demand Trends



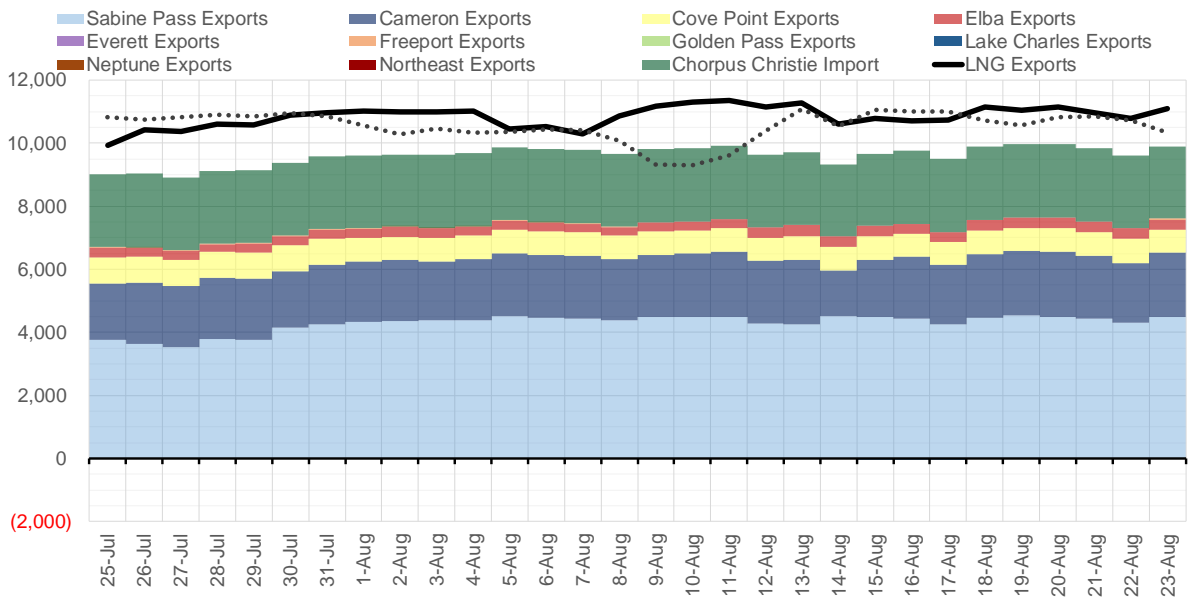
Source: Bloomberg

The risk of trading futures and options and other derivatives involves a substantial risk of loss and is not suitable for all persons. Each person must consider whether a particular trade, combination of trades, or strategy is suitable for that person's financial means and objectives. Past results are not necessarily indicative of future results. This communication may contain links to third party websites which are not under the control of and are not maintained by ION Energy Group, and ION Energy Group is not responsible for their content.

Mexican Exports (MMcf/d)



Net LNG Exports - Last 30 days (MMcf/d)



Source: Bloomberg

The risk of trading futures and options and other derivatives involves a substantial risk of loss and is not suitable for all persons. Each person must consider whether a particular trade, combination of trades, or strategy is suitable for that person's financial means and objectives. Past results are not necessarily indicative of future results. This communication may contain links to third party websites which are not under the control of and are not maintained by ION Energy Group, and ION Energy Group is not responsible for their content.

Nat Gas Options Volume and Open Interest CME and ICE Combined

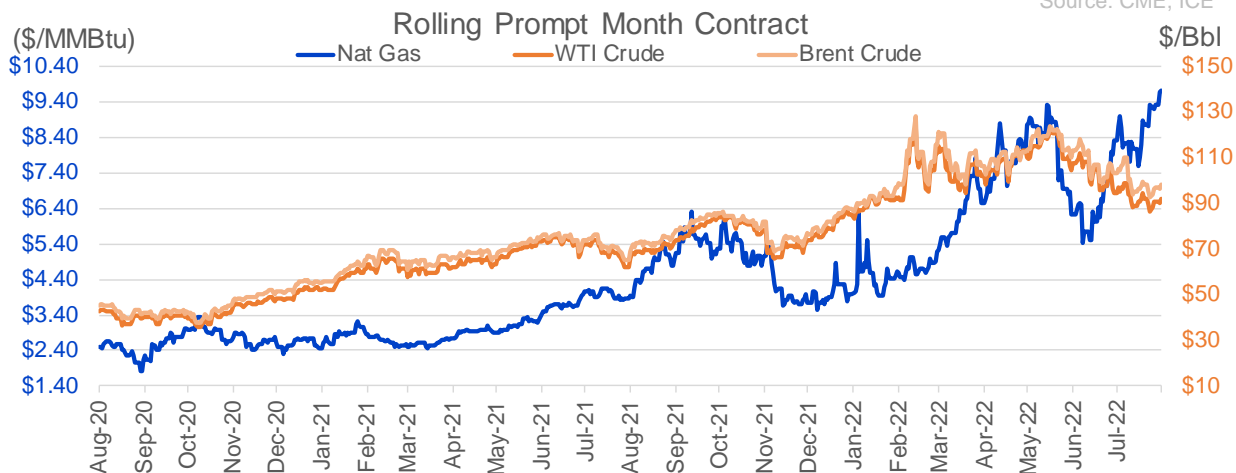
CONTRACT MONTH	CONTRACT YEAR	PUT/CALL	STRIKE	CUMULATIVE VOL	CONTRACT MONTH	CONTRACT YEAR	PUT/CALL	STRIKE	CUMULATIVE OI
9	2022	C	10.00	4186	10	2022	P	3.00	36640
9	2022	C	11.00	3982	10	2022	C	6.00	36011
10	2022	P	5.00	3276	10	2022	P	6.00	31488
9	2022	C	12.00	2705	10	2022	P	5.00	29599
10	2022	C	12.00	2653	10	2022	P	2.50	28113
11	2022	C	12.00	1934	9	2022	C	6.00	24369
12	2022	P	5.00	1850	10	2022	C	5.00	23273
9	2022	C	10.50	1820	10	2022	P	4.00	22844
10	2022	P	7.00	1573	3	2023	C	10.00	22390
10	2022	P	4.00	1552	10	2022	C	10.00	22330
10	2022	C	12.10	1501	10	2022	P	3.50	22246
12	2022	C	15.00	1354	10	2022	C	12.00	22157
9	2022	P	9.50	1354	9	2022	C	10.00	21841
12	2022	P	7.00	1306	5	2023	P	2.00	20997
11	2022	P	7.00	1288	9	2022	P	6.00	20520
1	2023	C	15.00	1276	9	2022	P	4.00	20463
10	2022	C	11.00	1196	11	2022	P	4.00	19771
9	2022	C	10.10	1139	9	2022	C	7.00	19536
4	2023	P	3.00	1125	12	2022	P	5.00	19471
5	2023	P	3.00	1125	10	2023	P	2.50	18475
6	2023	P	3.00	1125	12	2022	C	5.00	18218
7	2023	P	3.00	1125	3	2023	P	3.00	18152
8	2023	P	3.00	1125	10	2022	C	8.00	17244
9	2023	P	3.00	1125	2	2023	C	10.00	17046
10	2023	P	3.00	1125	10	2022	P	2.00	16759
11	2022	C	16.00	1102	9	2022	C	9.00	16654
2	2023	C	13.00	1100	9	2022	P	3.00	16612
2	2023	C	15.00	1100	4	2023	P	3.00	16609
11	2023	P	3.00	1100	1	2023	C	10.00	16488
12	2023	P	3.00	1100	3	2023	C	20.00	16082
9	2022	P	9.00	1098	9	2022	C	4.00	15969
11	2022	P	5.00	1050	10	2022	P	5.50	15761
1	2023	C	13.00	1005	9	2022	C	12.00	15677
10	2022	C	10.00	1004	9	2022	P	2.50	15478
9	2022	C	11.10	1000	10	2023	P	3.00	15358
11	2022	C	12.10	1000	10	2022	P	3.25	15350
12	2022	C	13.00	1000	10	2023	P	2.00	15280
11	2023	P	3.50	1000	9	2022	P	7.00	15216
12	2023	P	3.50	1000	10	2022	C	7.00	15089
1	2024	P	3.00	1000	9	2022	P	2.75	14887
1	2024	P	3.50	1000	4	2023	P	2.75	14520
2	2024	P	3.00	1000	9	2022	P	5.00	14472
2	2024	P	3.50	1000	2	2023	C	9.00	14364
3	2024	P	3.00	1000	9	2022	P	3.50	14015
3	2024	P	3.50	1000	12	2022	C	6.00	13987
10	2022	P	7.50	948	9	2022	P	6.50	13917
10	2022	P	8.00	934	5	2023	P	3.00	13888
9	2022	P	8.50	838	6	2023	P	3.00	13885
3	2023	C	20.00	702	11	2022	C	10.00	13817
					11	2022	C	8	13780

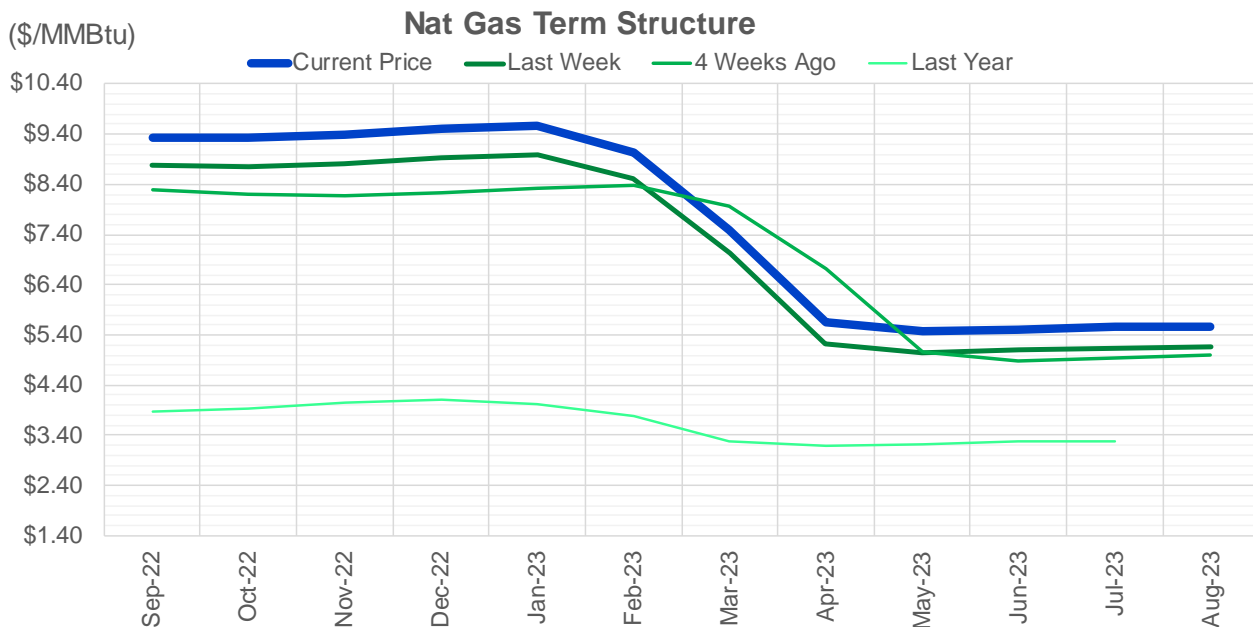
Source: CME, ICE

Nat Gas Futures Open Interest CME and ICE Combined

CME Henry Hub Futures (10,000 MMBtu)				ICE Henry Hub Futures Contract Equivalent (10,000 MM			
	Current	Prior	Daily Change		Current	Prior	Daily Change
SEP 22	31449	40595	-9146	SEP 22	78917	78040	877
OCT 22	120152	118522	1630	OCT 22	78479	77379	1100
NOV 22	121555	121242	313	NOV 22	66613	65518	1095
DEC 22	66782	66054	728	DEC 22	68481	67707	774
JAN 23	84815	85011	-196	JAN 23	66331	66398	-68
FEB 23	36953	37137	-184	FEB 23	62314	62336	-22
MAR 23	57147	56745	402	MAR 23	54748	54255	493
APR 23	71467	70977	490	APR 23	57153	56414	739
MAY 23	73601	74234	-633	MAY 23	55281	54862	418
JUN 23	23689	23177	512	JUN 23	46825	46912	-88
JUL 23	24243	23608	635	JUL 23	46166	46399	-233
AUG 23	18583	19008	-425	AUG 23	45007	45130	-123
SEP 23	20344	20034	310	SEP 23	43814	43891	-77
OCT 23	50578	49666	912	OCT 23	51288	51551	-262
NOV 23	13602	13628	-26	NOV 23	45618	45168	450
DEC 23	12692	12685	7	DEC 23	41341	41250	92
JAN 24	19533	19064	469	JAN 24	40115	40461	-346
FEB 24	7916	7978	-62	FEB 24	30527	30528	-1
MAR 24	17805	17816	-11	MAR 24	35238	35030	208
APR 24	14308	14319	-11	APR 24	28457	28505	-48
MAY 24	7200	7135	65	MAY 24	27351	27399	-48
JUN 24	2645	2635	10	JUN 24	24393	24360	33
JUL 24	2431	2424	7	JUL 24	24329	24308	20
AUG 24	3309	3306	3	AUG 24	23908	23897	11
SEP 24	1976	1976	0	SEP 24	23844	23832	12
OCT 24	8942	8934	8	OCT 24	27311	27148	163
NOV 24	4834	4823	11	NOV 24	24936	24901	35
DEC 24	7897	7898	-1	DEC 24	28229	28200	29
JAN 25	16604	16569	35	JAN 25	21758	21804	-46
FEB 25	982	953	29	FEB 25	14439	14318	121

Source: CME, ICE





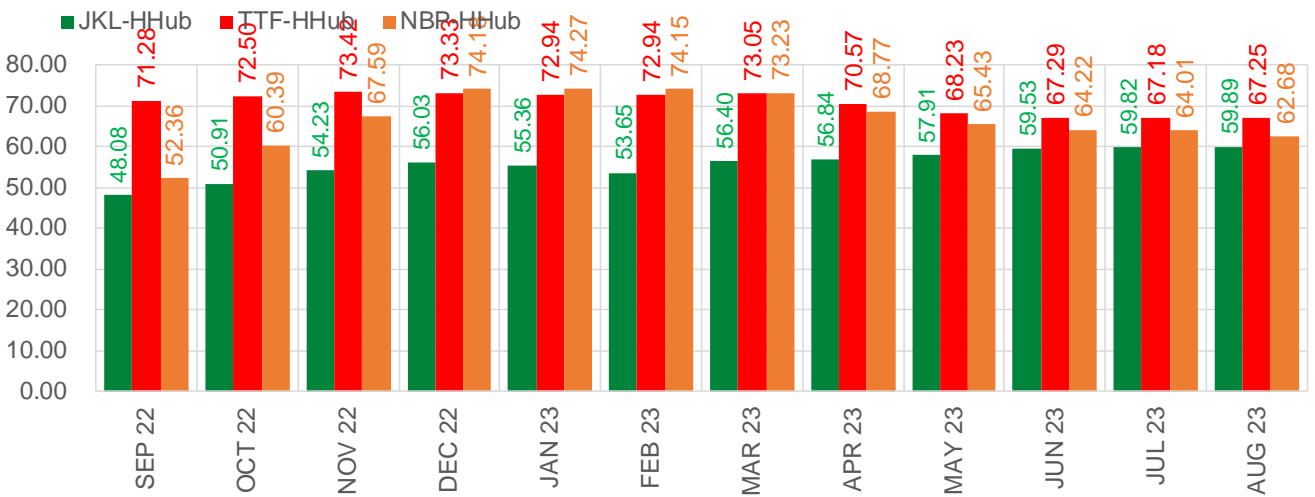
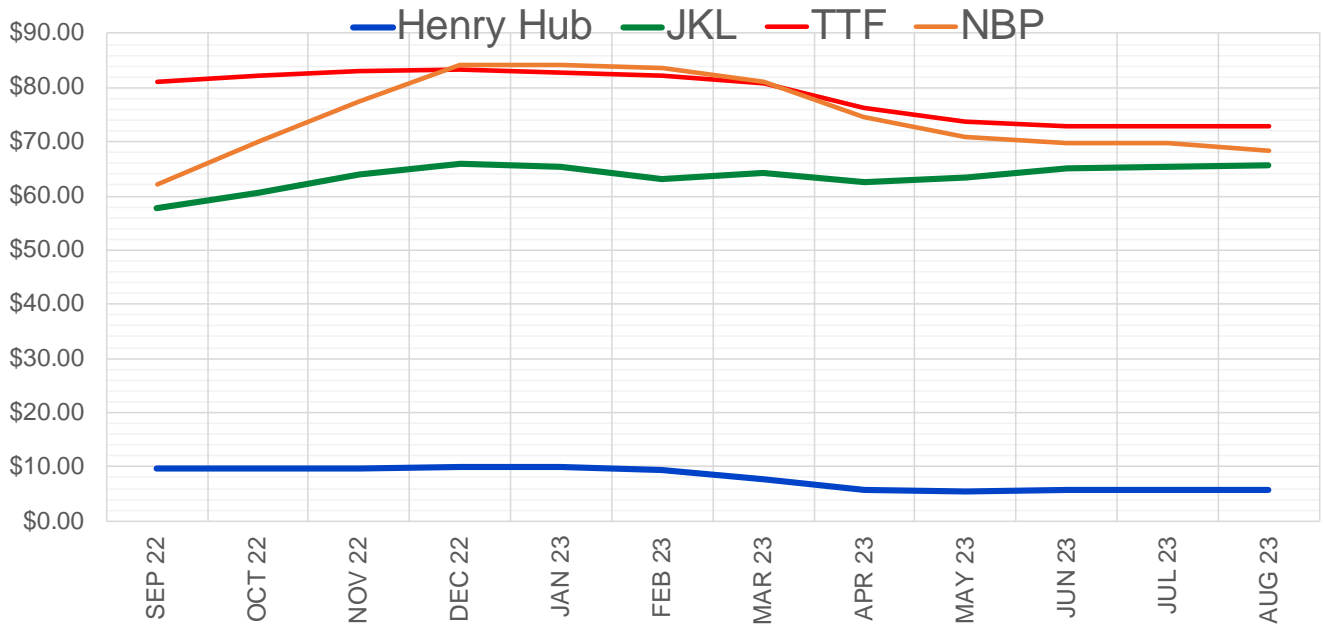
	Sep-22	Oct-22	Nov-22	Dec-22	Jan-23	Feb-23	Mar-23	Apr-23	May-23	Jun-23	Jul-23	Aug-23
Current Price	\$9.336	\$9.315	\$9.385	\$9.492	\$9.552	\$9.030	\$7.496	\$5.656	\$5.462	\$5.508	\$5.555	\$5.567
Last Week	\$8.768	\$8.744	\$8.816	\$8.927	\$8.984	\$8.507	\$7.040	\$5.229	\$5.050	\$5.098	\$5.147	\$5.157
vs. Last Week	\$0.568	\$0.571	\$0.569	\$0.565	\$0.568	\$0.523	\$0.456	\$0.427	\$0.412	\$0.410	\$0.408	\$0.410
4 Weeks Ago	\$8.299	\$8.195	\$8.167	\$8.238	\$8.312	\$8.374	\$7.952	\$6.706	\$5.057	\$4.893	\$4.942	\$4.993
vs. 4 Weeks Ago	\$1.037	\$1.120	\$1.218	\$1.254	\$1.240	\$0.656	-\$0.456	-\$1.050	\$0.405	\$0.615	\$0.613	\$0.574
Last Year	\$3.851	\$3.866	\$3.932	\$4.039	\$4.099	\$4.023	\$3.774	\$3.268	\$3.201	\$3.231	\$3.267	\$3.277
vs. Last Year	\$5.485	\$5.449	\$5.453	\$5.453	\$5.453	\$5.007	\$3.722	\$2.388	\$2.261	\$2.277	\$2.288	\$2.290

	Units	Cash Settled	Prompt Settle	Cash to Prompt
AGT Citygate	\$/MMBtu	9.28	9.10	-0.18
TETCO M3	\$/MMBtu	8.83	7.59	-1.25
FGT Zone 3	\$/MMBtu	8.86	9.66	0.80
Zone 6 NY	\$/MMBtu	8.86	7.56	-1.31
Chicago Citygate	\$/MMBtu	8.89	8.38	-0.51
Michcon	\$/MMBtu	8.92	8.67	-0.25
Columbia TCO Pool	\$/MMBtu	8.63	7.63	-1.00
Ventura	\$/MMBtu	5.95	8.29	2.34
Rockies/Opal	\$/MMBtu	8.88	8.17	-0.71
El Paso Permian Basin	\$/MMBtu	7.44	7.55	0.11
Socal Citygate	\$/MMBtu	10.04	9.71	-0.33
Malin	\$/MMBtu	8.68	8.41	-0.27
Houston Ship Channel	\$/MMBtu	9.00	8.31	-0.69
Henry Hub Cash	\$/MMBtu	9.84	8.19	-1.65
AECO Cash	C\$/GJ	-0.02	4.52	4.54
Station2 Cash	C\$/GJ	0.04	8.03	7.99
Dawn Cash	C\$/GJ	8.94	8.37	-0.57

Source: CME, Bloomberg

	Units	Current Price	vs. Last Week	vs. 4 Weeks Ago	vs. Last Year
NatGas Jul21/Oct21	\$/MMBtu	2.224	▲ 0.000	▲ 0.000	▲ 1.881
NatGas Oct21/Nov21	\$/MMBtu	0.361	▲ 0.000	▲ 0.000	▲ 0.297
NatGas Oct21/Jan22	\$/MMBtu	-1.817	▲ 0.000	▲ 0.000	▼ -2.040
NatGas Apr22/Oct22	\$/MMBtu	4.311	▲ 0.935	▲ 1.095	▲ 4.303
WTI Crude	\$/Bbl	90.23	▲ 0.820	▼ -6.470	▲ 24.590
Brent Crude	\$/Bbl	96.48	▲ 1.380	▼ -8.670	▲ 27.730
Fuel Oil, NY Harbour 1%	\$/Bbl	97.18	▲ 0.000	▲ 0.000	▲ 0.000
Heating Oil	cents/Gallon	377.62	▲ 33.590	▲ 25.960	▲ 177.110
Propane, Mt. Bel	cents/Gallon	1.09	▲ 0.013	▼ -0.056	▼ -0.018
Ethane, Mt. Bel	cents/Gallon	0.61	▲ 0.022	▲ 0.034	▲ 0.277
Coal, PRB	\$/MTon	12.30	▲ 0.000	▲ 0.000	▲ 0.000
Coal, PRB	\$/MMBtu	0.70			
Coal, ILB	\$/MTon	31.05	▲ 0.000	▲ 0.000	▲ 0.000
Coal, ILB	\$/MMBtu	1.32			

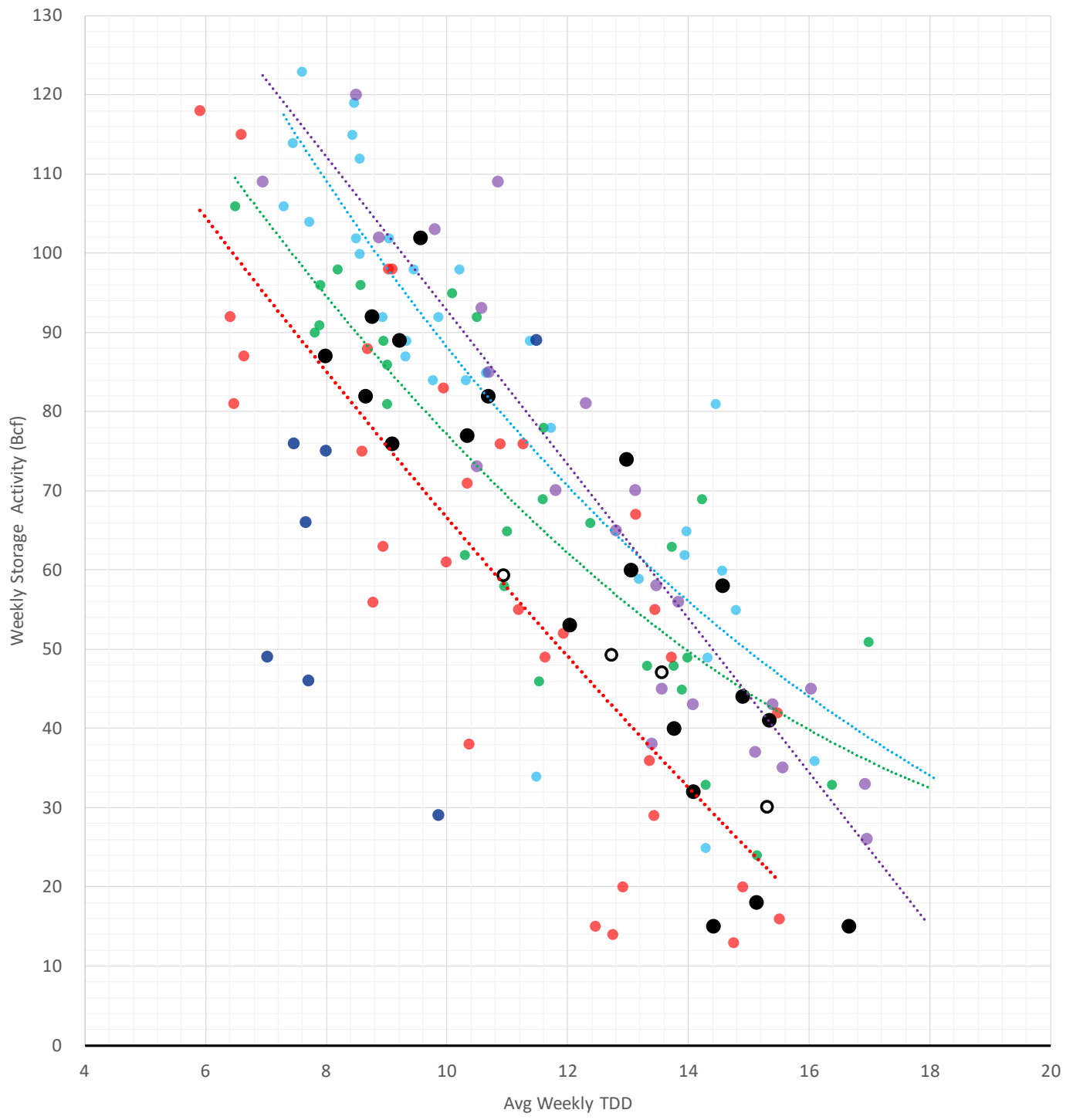
Nat Gas Term Structure (\$MMBTU)



	SEP 22	OCT 22	NOV 22	DEC 22	JAN 23	FEB 23	MAR 23	APR 23	MAY 23	JUN 23	JUL 23	AUG 23
Henry Hub	\$9.739	\$9.699	\$9.769	\$9.930	\$9.910	\$9.373	\$7.745	\$5.769	\$5.575	\$5.621	\$5.665	\$5.679
JKL	\$57.820	\$60.605	\$63.995	\$65.960	\$65.270	\$63.020	\$64.145	\$62.610	\$63.485	\$65.150	\$65.485	\$65.570
JKL-HHub	\$48.081	\$50.906	\$54.226	\$56.030	\$55.360	\$53.647	\$56.400	\$56.841	\$57.910	\$59.529	\$59.820	\$59.891
TTF	\$81.022	\$82.201	\$83.191	\$83.263	\$82.849	\$82.314	\$80.791	\$76.335	\$73.806	\$72.908	\$72.849	\$72.933
TTF-HHub	\$71.283	\$72.502	\$73.422	\$73.333	\$72.939	\$72.941	\$73.046	\$70.566	\$68.231	\$67.287	\$67.184	\$67.254
NBP	\$62.098	\$70.093	\$77.354	\$84.107	\$84.182	\$83.519	\$80.979	\$74.535	\$71.006	\$69.845	\$69.676	\$68.356
NBP-HHub	\$52.359	\$60.394	\$67.585	\$74.177	\$74.272	\$74.146	\$73.234	\$68.766	\$65.431	\$64.224	\$64.011	\$62.677

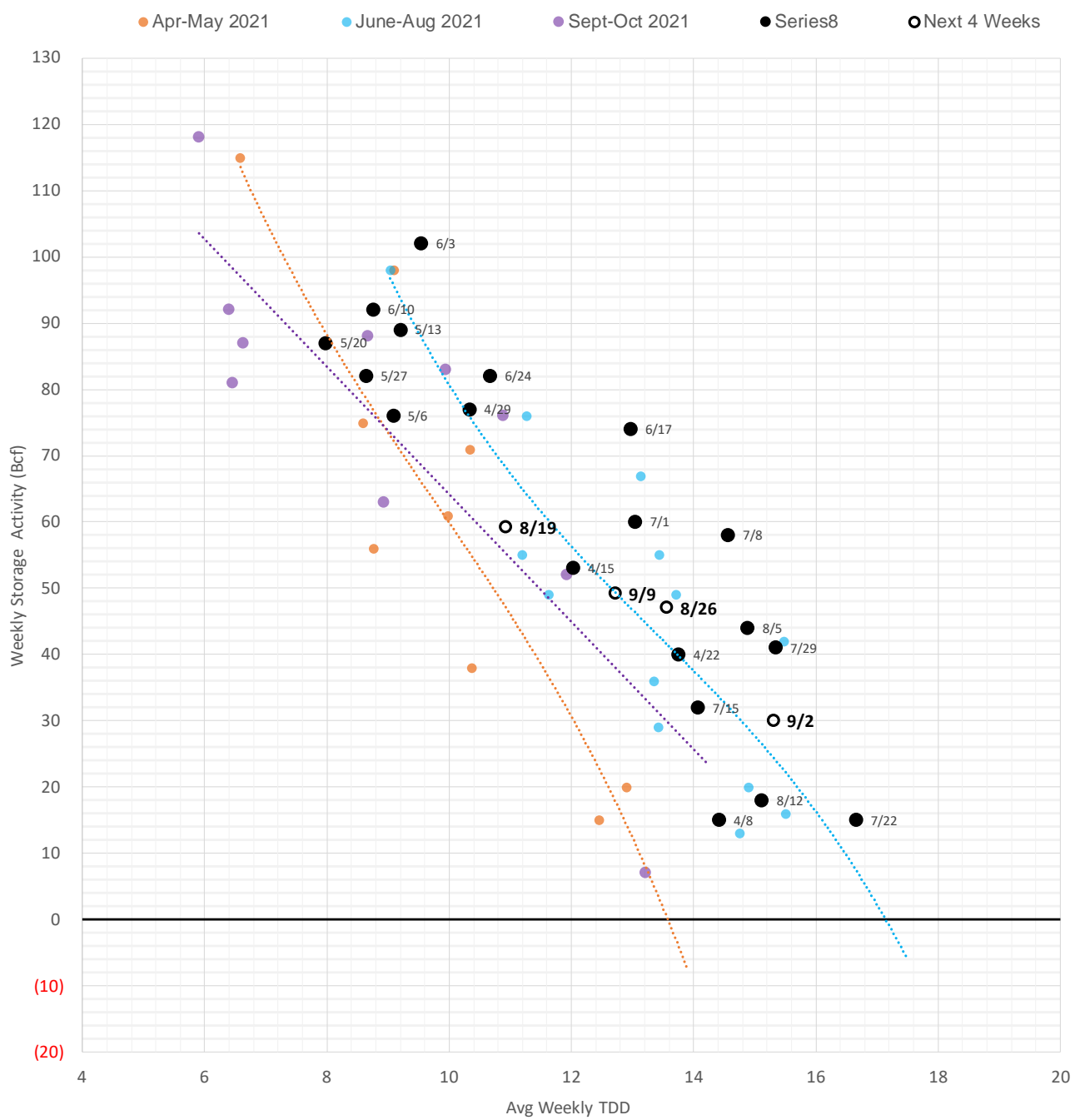
Weather Storage Model - Next 4 Week Forecast

● Summer 18 ● Summer 19 ● Summer 20 Apr-Aug ● Summer 20 Sept-Oct ● Summer 21 ● Summer 22 ○ Next 4 Weeks



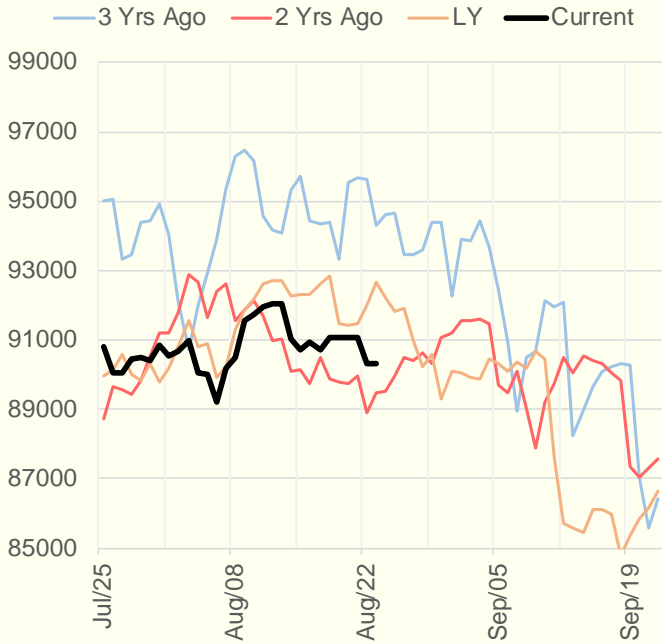
The risk of trading futures and options and other derivatives involves a substantial risk of loss and is not suitable for all persons. Each person must consider whether a particular trade, combination of trades, or strategy is suitable for that person's financial means and objectives. Past results are not necessarily indicative of future results. This communication may contain links to third party websites which are not under the control of and are not maintained by ION Energy Group, and ION Energy Group is not responsible for their content.

Weather Storage Model - Next 4 Week Forecast

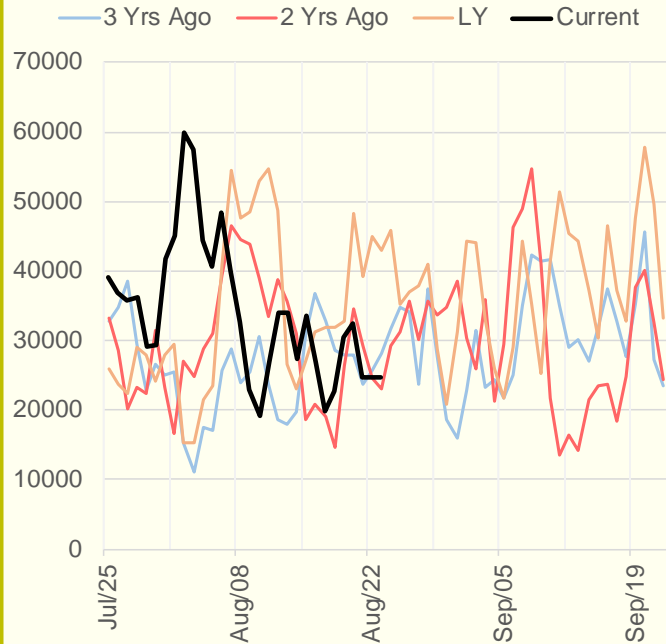


The risk of trading futures and options and other derivatives involves a substantial risk of loss and is not suitable for all persons. Each person must consider whether a particular trade, combination of trades, or strategy is suitable for that person's financial means and objectives. Past results are not necessarily indicative of future results. This communication may contain links to third party websites which are not under the control of and are not maintained by ION Energy Group, and ION Energy Group is not responsible for their content.

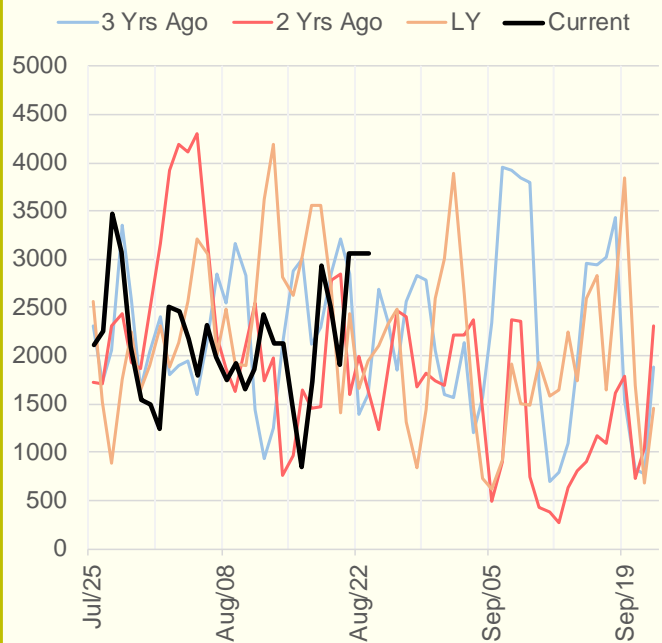
NRC Nuclear Daily Output



US Wind



CALI Wind



TEXAS Wind

