

	Current	Δ from YD	Δ from 7D Avg
Nat Gas Prompt	\$ 9.38 ▲	\$ 0.19 ▲	\$ 0.05

	Current	Δ from YD	Δ from 7D Avg
WTI Prompt	\$ 94.78 ▲	\$ 1.04 ▲	\$ 4.1

	Current	Δ from YD	Δ from 7D Avg
Brent Prompt	\$ 101.34 ▲	\$ 1.12 ▲	\$ 4.6

Page Menu

[Short-term Weather Model Outlooks](#)

[Lower 48 Component Models](#)

[Regional S/D Models Storage Projection](#)

[Weather Model Storage Projection](#)

[Supply – Demand Trends](#)

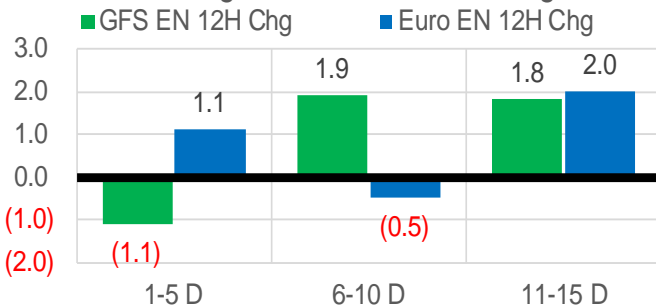
[Nat Gas Options Volume and Open Interest](#)

[Nat Gas Futures Open Interest](#)

[Price Summary](#)

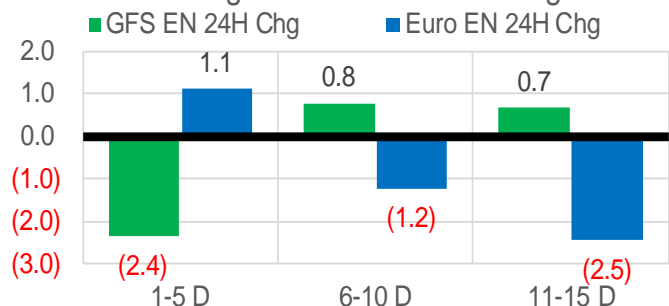
Vs. 12H Ago

L48 Region - 00z TDD vs 12H Ago



Vs. 24H Ago

L48 Region - 00z TDD vs 24H Ago



	Current	Δ from YD	Δ from 7D Avg
US Dry Production	98.1 ▲	0.05	-0.28 ▼

	Current	Δ from YD	Δ from 7D Avg
US Power Burns	42.0 ▼	-0.34 ▼	1.28 ▲

	Current	Δ from YD	Δ from 7D Avg
US ResComm	8.2 ▼	-0.01 ▼	0.21 ▲

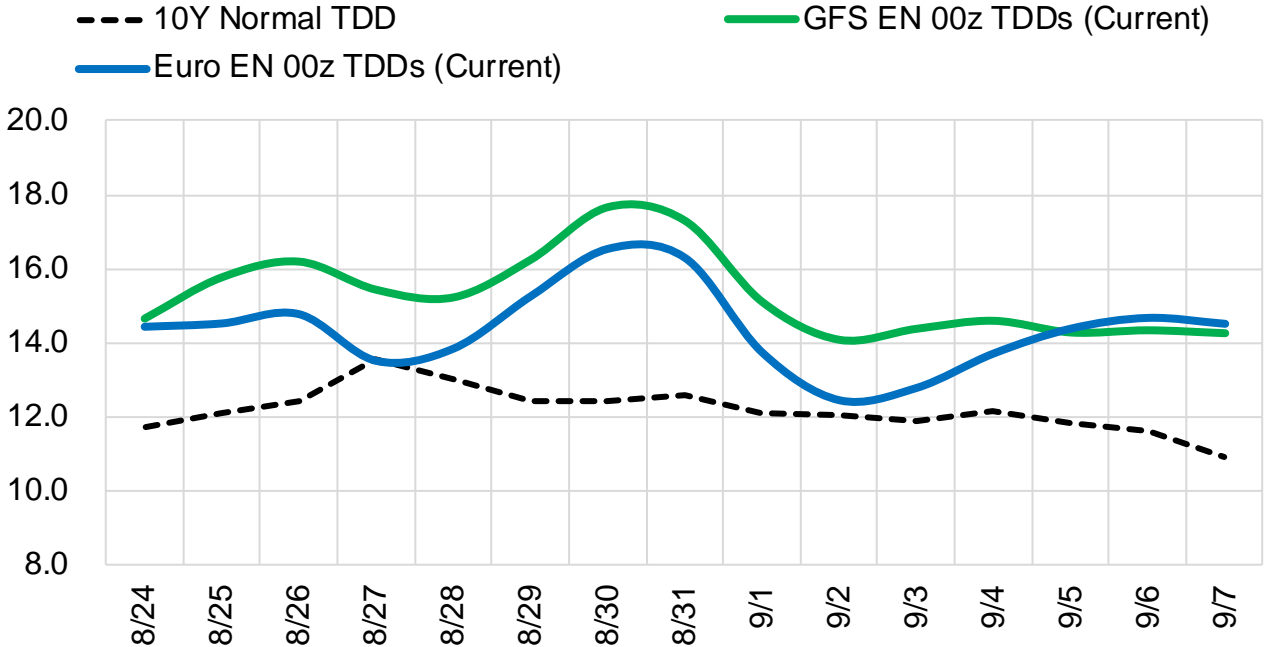
	Current	Δ from YD	Δ from 7D Avg
Canadian Imports	5.8 ▲	0.22 ▲	0.60 ▲

	Current	Δ from YD	Δ from 7D Avg
Net LNG Exports	11.1 ▲	0.09 ▲	0.12 ▲

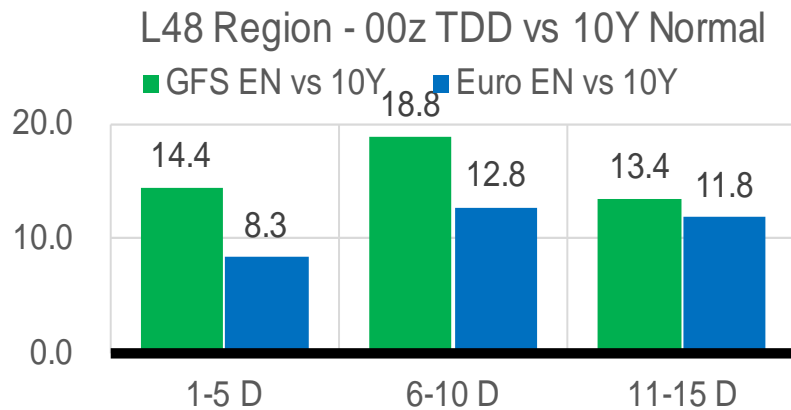
	Current	Δ from YD	Δ from 7D Avg
Mexican Exports	6.9 ▲	0.00	0.07 ▲

Short-term Weather Model Outlooks (00z)

L48 Region



Vs. 10Y Normal



Source: WSI , Bloomberg

Lower 48 Component Models

Daily Balances

	18-Aug	19-Aug	20-Aug	21-Aug	22-Aug	23-Aug	24-Aug	DoD	vs. 7D
Lower 48 Dry Production	98.3	98.2	99.0	99.0	99.0	98.1	98.1	▲ 0.1	▼ -0.5
Canadian Imports	5.2	5.3	5.1	5.2	5.3	5.6	5.8	▲ 0.2	▲ 0.5
L48 Power	40.9	40.8	39.4	39.3	41.1	42.3	42.0	▼ -0.3	▲ 1.3
L48 Residential & Commercial	8.2	8.0	7.7	7.8	8.1	8.2	8.2	▼ 0.0	▲ 0.2
L48 Industrial	21.3	21.3	21.3	21.3	21.1	21.2	21.2	▼ 0.0	▼ 0.0
L48 Lease and Plant Fuel	5.3	5.3	5.4	5.4	5.4	5.3	5.3	▼ 0.0	▼ -0.1
L48 Pipeline Distribution	2.6	2.6	2.5	2.5	2.6	2.7	2.7	▼ 0.0	▲ 0.1
L48 Regional Gas Consumption	78.3	78.0	76.3	76.2	78.4	79.8	79.3	▼ -0.4	▲ 1.5
Net LNG Delivered	11.14	11.04	11.14	10.97	10.74	11.01	11.09	▲ 0.1	▲ 0.1
Total Mexican Exports	7.0	6.9	6.5	6.4	6.7	6.9	6.9	▲ 0.0	▲ 0.1
Implied Daily Storage Activity	7.1	7.6	10.2	10.6	8.4	6.1	6.7		
EIA Reported Daily Storage Activity									
Daily Model Error									

EIA Storage Week Balances

	15-Jul	22-Jul	29-Jul	5-Aug	12-Aug	19-Aug	WoW	vs. 4W
Lower 48 Dry Production	96.5	97.4	97.7	99.1	98.7	98.1	▼ -0.6	▼ -0.1
Canadian Imports	6.0	6.2	5.9	5.7	5.4	4.8	▼ -0.6	▼ -1.0
L48 Power	42.9	45.5	44.8	44.4	45.7	39.7	▼ -6.1	▼ -5.4
L48 Residential & Commercial	8.4	8.7	8.6	8.3	8.4	7.9	▼ -0.4	▼ -0.6
L48 Industrial	20.5	21.0	19.4	20.6	21.6	21.3	▼ -0.3	▲ 0.6
L48 Lease and Plant Fuel	5.2	5.3	5.3	5.4	5.4	5.3	▼ 0.0	▲ 0.0
L48 Pipeline Distribution	2.7	2.9	2.8	2.8	2.9	2.5	▼ -0.3	▼ -0.3
L48 Regional Gas Consumption	79.7	83.3	80.9	81.5	83.9	76.7	▼ -7.2	▼ -5.7
Net LNG Exports	11.1	10.8	10.7	10.9	10.9	10.9	▲ 0.1	▲ 0.1
Total Mexican Exports	7.0	7.1	6.9	6.9	7.0	6.9	▼ -0.1	▼ 0.0
Implied Daily Storage Activity	4.7	2.3	5.1	5.4	2.3	8.3	6.1	
EIA Reported Daily Storage Activity	4.6	2.1	5.9	6.3	2.6			
Daily Model Error	0.2	0.2	-0.8	-0.9	-0.3			

Monthly Balances

	2Yr Ago Aug-20	LY Aug-21	Apr-22	May-22	Jun-22	Jul-22	MTD Aug-22	MoM	vs. LY
Lower 48 Dry Production	88.9	93.9	95.1	96.0	97.1	97.4	98.5	▲ 1.1	▲ 4.6
Canadian Imports	4.9	5.1	5.8	5.1	5.7	5.9	5.2	▼ -0.7	▲ 0.1
L48 Power	41.0	40.4	25.1	29.7	36.8	43.4	42.8	▼ -0.7	▲ 2.4
L48 Residential & Commercial	7.7	7.9	22.3	12.4	9.0	8.5	8.2	▼ -0.3	▲ 0.3
L48 Industrial	20.8	21.0	20.1	19.8	20.6	20.3	21.3	▲ 1.0	▲ 0.2
L48 Lease and Plant Fuel	4.8	5.1	5.2	5.3	5.2	5.3	5.4	▲ 0.1	▲ 0.3
L48 Pipeline Distribution	2.5	2.6	2.6	2.4	2.5	2.8	2.7	▼ -0.1	▲ 0.1
L48 Regional Gas Consumption	76.9	77.0	75.3	69.6	74.2	80.2	80.3	▲ 0.1	▲ 3.3
Net LNG Exports	4.0	10.5	12.3	12.5	11.2	10.9	10.9	▼ 0.0	▲ 0.5
Total Mexican Exports	6.0	6.9	6.7	7.0	7.1	7.0	6.9	▼ -0.1	▲ 0.0
Implied Daily Storage Activity	6.8	4.7	6.6	12.0	10.3	5.2	5.7		
EIA Reported Daily Storage Activity									
Daily Model Error									

Source: Bloomberg, analytix.ai

Daily Average Generation Data

Nuclear Generation Daily Average - GWh (NRC)

	16-Aug	17-Aug	18-Aug	19-Aug	20-Aug	21-Aug	22-Aug	DoD	vs. 7D
NRC Nuclear Daily Output	90.9	90.7	91.1	91.1	89.1	89.3	90.3	1.0	0.0
NRC Nuclear Max Capacity	104.9	104.9	104.9	104.9	104.9	104.9	104.9	0.0	0.0
NRC Nuclear Outage	14.0	14.2	13.8	13.8	15.7	15.6	14.6	-1.0	0.0
NRC % Nuclear Cap Utilization	92.4	92.2	92.6	92.6	90.6	90.8	91.8	1.0	0.0

Wind Generation Daily Average - MWh (EIA)

	16-Aug	17-Aug	18-Aug	19-Aug	20-Aug	21-Aug	22-Aug	DoD	vs. 7D
CALI Wind	841	1732	2933	2514	1909	3062	3535	473	1370
TEXAS Wind	7709	7381	5441	5915	10405	7764	8295	531	859
US Wind	26852	19875	22824	30537	32575	24396	24104	-291	-2072

Generation Daily Average - MWh (EIA)

	16-Aug	17-Aug	18-Aug	19-Aug	20-Aug	21-Aug	22-Aug	DoD	vs. 7D
US Wind	26852	19875	22824	30537	32575	24396	24104	-291	-2072
US Solar	15357	16513	16336	15323	15388	15018	14995	-24	-661
US Petroleum	1129	1014	1041	1019	1058	1013	1008	-5	-38
US Other	9719	9630	9931	9973	9875	9422	10141	719	383
US Coal	112257	113249	109818	107291	104735	105180	114698	9518	5943
US Nuke	93703	93674	93829	93374	91702	92047	93069	1022	14
US Hydro	31415	31887	32147	32244	28458	25790	29822	4031	-502
US Gas	227553	229932	225294	219290	210492	206556	227217	20662	7365

See National Wind and Nuclear daily charts

Source: Bloomberg, analytix.ai

Storage Week Average Generation Data

Nuclear Generation Weekly Average - GWh (NRC)

	15-Jul	22-Jul	29-Jul	5-Aug	12-Aug	19-Aug	WoW	WoW Bcf/d Impact
NRC Nuclear Daily Output	91.2	90.5	90.1	90.6	90.7	91.2	0.5	-0.1
NRC Nuclear Max Capacity	104.9	104.9	104.9	104.9	104.9	104.9	0.0	
NRC Nuclear Outage	13.7	14.4	14.8	14.3	14.1	13.7	-0.5	
NRC % Nuclear Cap Utilization	92.7	92.0	91.6	92.1	92.3	92.8	0.5	

Wind Generation Weekly Average - MWh (EIA)

	15-Jul	22-Jul	29-Jul	5-Aug	12-Aug	19-Aug	WoW	WoW Bcf/d Impact
CALI Wind	2268	2470	3049	1933	1901	1953	52	0.0
TEXAS Wind	7264	11182	14533	14443	8762	7139	-1622	0.3
US Wind	34828	40504	44003	43887	32976	28376	-4600	0.8
							-14%	
							-0.2	

Generation Weekly Average - MWh (EIA)

	15-Jul	22-Jul	29-Jul	5-Aug	12-Aug	19-Aug	WoW	WoW Bcf/d Impact
							est.	
US Wind	34828	40504	44003	43887	32976	28376	-4600	0.8
US Solar	18462	18727	18097	17577	17568	16733	-834	0.2
US Petroleum	1015	1707	1465	1131	1737	1045	-692	0.1
US Other	9191	10492	10690	10470	10725	9764	-961	0.2
US Coal	115849	121563	128742	122297	122575	111349	-11226	2.0
US Nuke	93487	92543	92281	92607	92966	94032	1066	-0.2
US Hydro	36439	33645	32210	31339	30400	29846	-553	0.1
US Gas	237759	249149	238167	236187	252451	217360	-35091	-6.3

See National Wind and Nuclear daily charts

Source: Bloomberg, analytix.ai

Monthly Average Generation Data

Nuclear Generation Monthly Average - GWh (NRC)

	2Yr Ago	LY	MTD							
	Same 30 days	Same 30 days	May-22	Jun-22	Jul-22	Aug-22	Last 30 days	MoM (MTD vs LY)	Last 30 days YoY	
	NRC Nuclear Daily Output	90.7	91.4	81.7	88.5	90.6	90.7	90.7	90.7	0.1
NRC Nuclear Max Capacity	104.9	104.9	104.9	104.9	104.9	104.9	104.9	104.9	0.0	0.0
NRC Nuclear Outage	14.1	13.5	23.2	16.3	14.3	14.1	14.2	14.2	-0.1	0.7
NRC % Nuclear Cap Utilization	92.3	92.9	83.0	90.0	92.1	92.3	92.2	92.2	0.1	-0.8

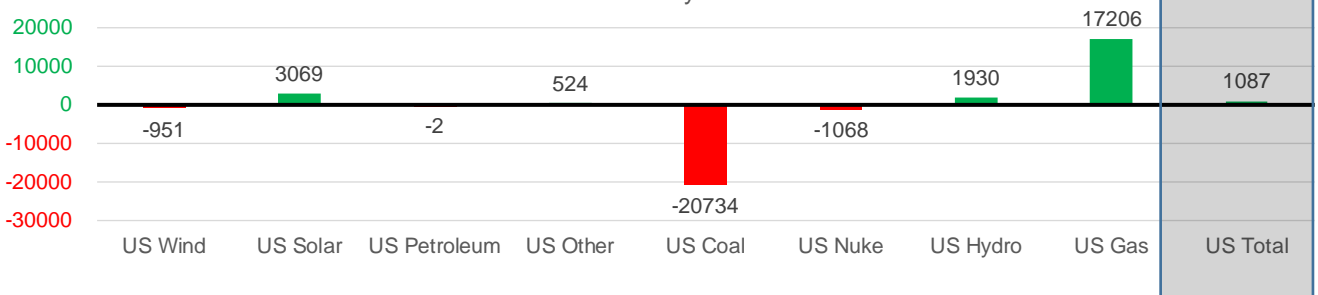
Wind Generation Monthly Average - MWh (EIA)

	2Yr Ago	LY	MTD						
	Same 30 days	Same 30 days	May-22	Jun-22	Jul-22	Aug-22	Last 30 days	MoM (MTD vs LY)	Last 30 days YoY
	CALI Wind	2269	2388	3361	2875	2719	2228	2247	-491
TEXAS Wind	8580	9695	16756	13441	11765	9372	10094	-2393	399
US Wind	28972	34457	56649	47161	39701	33173	33507	-6528	-951

Generation Monthly Average - MWh (EIA)

	2Yr Ago	LY	MTD						
	Same 30 days	Same 30 days	May-22	Jun-22	Jul-22	Aug-22	Last 30 days	MoM (MTD vs LY)	Last 30 days YoY
	US Wind	28972	34457	56649	47161	39701	33173	33507	▲ 333.6
US Solar	11005	13849	18212	19386	18593	16708	16919	▲ 210.8	▲ 3069
US Petroleum	1312	1260	518	998	1252	1286	1258	▼ -28	▼ -2
US Other	9886	9743	7723	8530	9961	10231	10267	▲ 36	▲ 524
US Coal	121886	138826	85695	105075	119788	116900	118092	▲ 1192	▼ -20734
US Nuke	92933	94080	85496	89904	92883	93146	93013	▼ -134	▼ -1068
US Hydro	29628	28577	31811	37521	34185	30177	30506	▲ 329	▲ 1930
US Gas	224737	215508	157670	199821	235787	232471	232714	▲ 1940	▲ 17206
US Total	518140	536050	443971	507971	551806	535249	537138	▲ 3547	▲ 1087

Last 30 days YoY



See National Wind and Nuclear daily charts

Source: Bloomberg, analytix.ai

Regional S/D Models Storage Projection

Week Ending 19-Aug

	Daily Raw Storage	Daily Adjustment Factor	Daily Average Storage Activity (Adjusted) *	Weekly Adjusted Storage Activity
L48	8.6	-0.1	8.5	59
East	1.5	2.1	3.6	25
Midwest	4.9	-0.8	4.1	29
Mountain	4.5	-4.1	0.4	3
South Central	-2.2	3.1	0.9	6
Pacific	-0.1	-0.5	-0.6	-4

*Adjustment Factor is calculated based on historical regional deltas

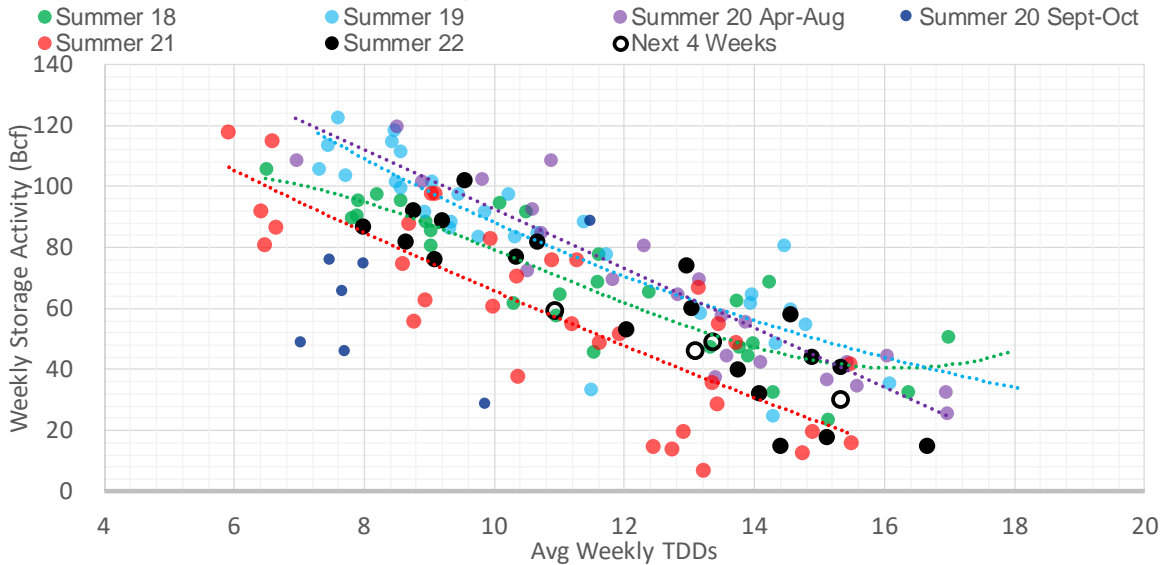
U.S. underground natural gas storage facilities by type (July 2015)



Weather Model Storage Projection

Next report and beyond		
Week Ending	GWDDs	Week Storage Projection
19-Aug	10.9	59
26-Aug	13.4	49
02-Sep	15.4	30
09-Sep	13.1	46

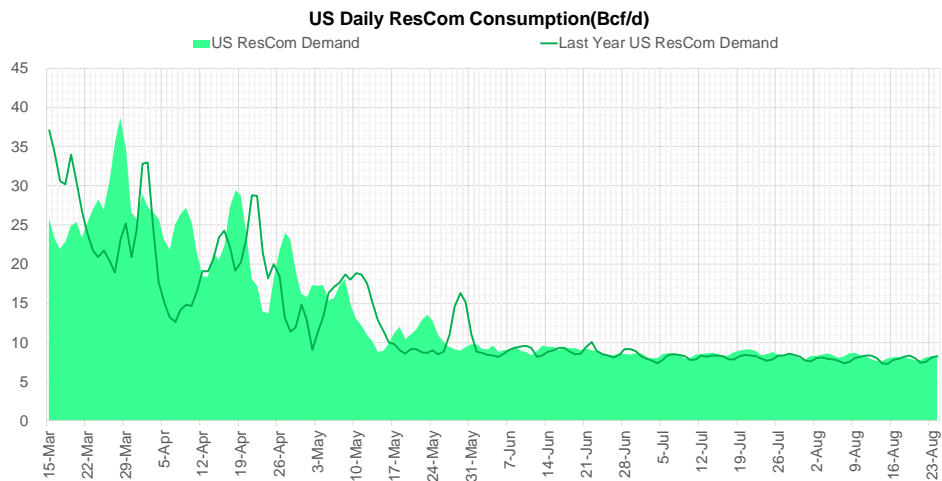
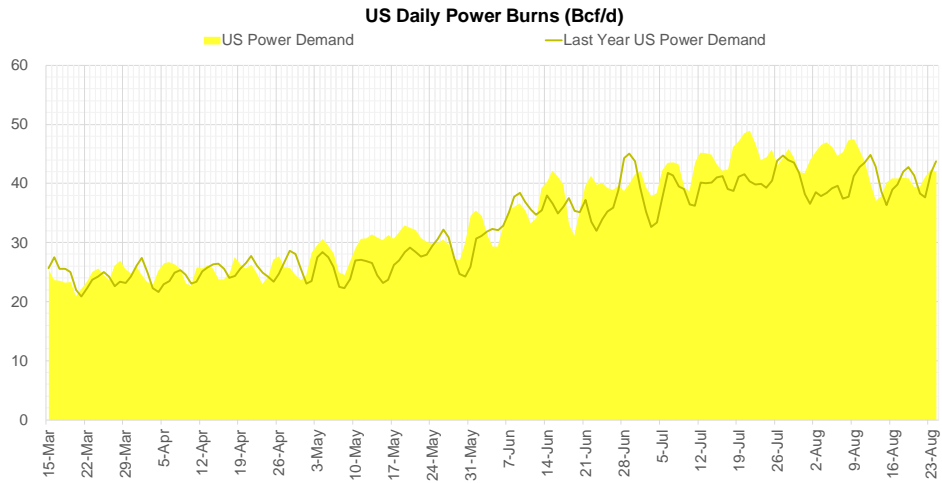
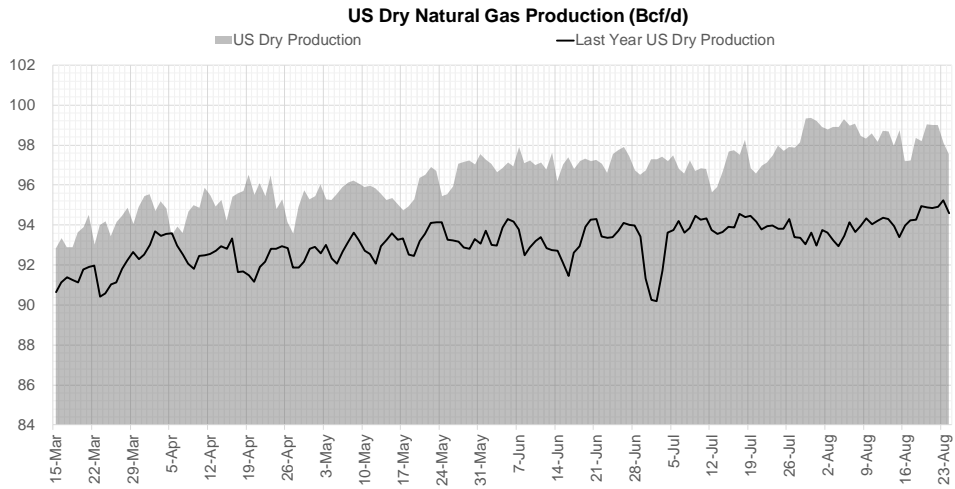
Weather Storage Model - Next 4 Week Forecast



Go to larger image



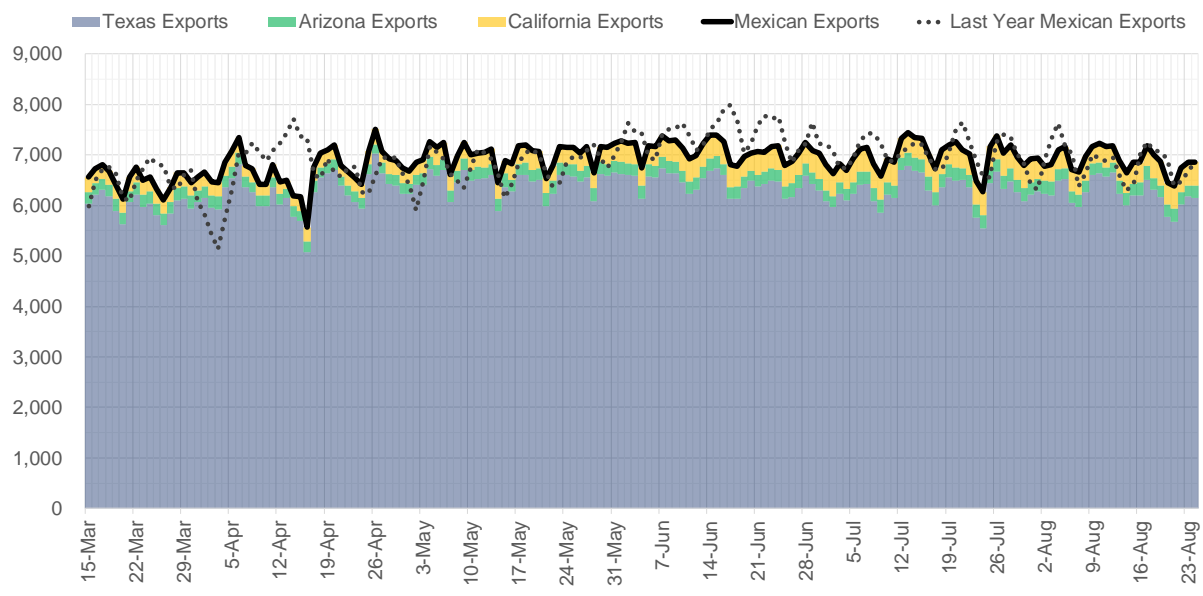
Supply – Demand Trends



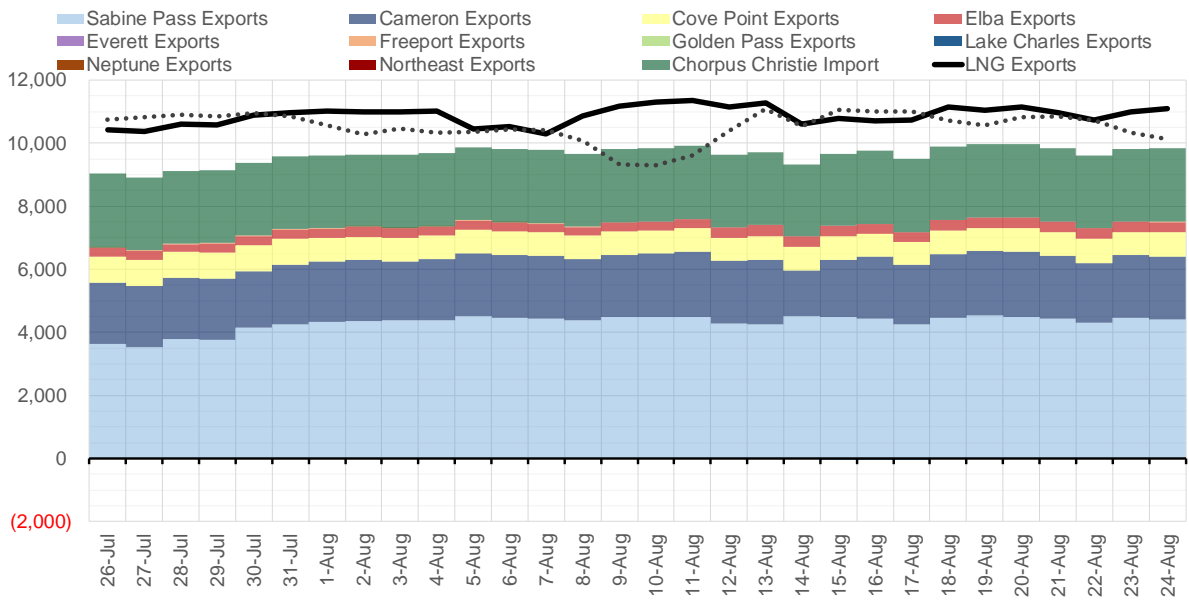
Source: Bloomberg

The risk of trading futures and options and other derivatives involves a substantial risk of loss and is not suitable for all persons. Each person must consider whether a particular trade, combination of trades, or strategy is suitable for that person's financial means and objectives. Past results are not necessarily indicative of future results. This communication may contain links to third party websites which are not under the control of and are not maintained by ION Energy Group, and ION Energy Group is not responsible for their content.

Mexican Exports (MMcf/d)



Net LNG Exports - Last 30 days (MMcf/d)



Source: Bloomberg

The risk of trading futures and options and other derivatives involves a substantial risk of loss and is not suitable for all persons. Each person must consider whether a particular trade, combination of trades, or strategy is suitable for that person's financial means and objectives. Past results are not necessarily indicative of future results. This communication may contain links to third party websites which are not under the control of and are not maintained by ION Energy Group, and ION Energy Group is not responsible for their content.

Nat Gas Options Volume and Open Interest CME and ICE Combined

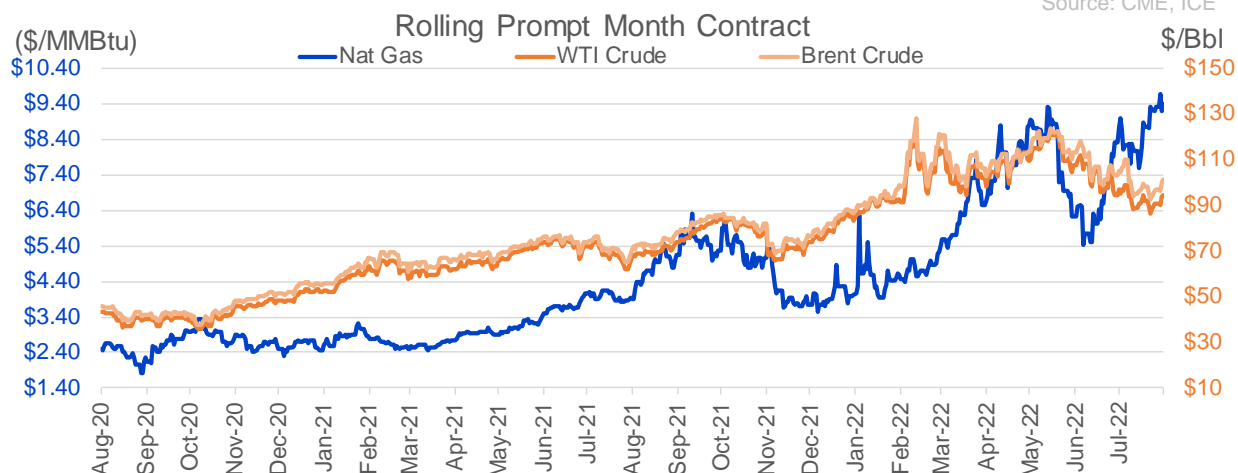
CONTRACT MONTH	CONTRACT YEAR	PUT/CALL	STRIKE	CUMULATIVE VOL	CONTRACT MONTH	CONTRACT YEAR	PUT/CALL	STRIKE	CUMULATIVE OI
9	2022	C	10.00	9028	10	2022	P	3.00	36640
10	2022	C	10.00	5393	10	2022	C	6.00	36011
9	2022	P	8.00	4550	10	2022	P	6.00	32516
10	2022	P	6.00	4228	10	2022	P	5.00	30897
9	2022	P	9.00	4170	10	2022	P	2.50	28113
9	2022	P	8.50	4084	9	2022	C	6.00	24363
10	2022	C	11.00	3880	10	2022	C	5.00	23273
10	2022	C	12.00	3840	3	2023	C	10.00	22391
10	2022	P	8.00	3767	10	2022	P	3.50	22246
9	2022	C	11.00	3663	10	2022	C	10.00	21994
9	2022	C	12.00	3520	10	2022	P	4.00	21992
10	2022	P	7.00	2809	10	2022	C	12.00	21729
10	2022	P	9.00	2789	9	2022	C	10.00	21250
11	2022	P	6.00	2459	12	2022	P	5.00	21071
9	2022	C	10.50	2329	5	2023	P	2.00	20997
12	2022	P	6.00	2302	9	2022	P	6.00	20522
9	2022	C	9.50	2226	9	2022	P	4.00	20463
9	2022	C	9.00	2165	11	2022	P	4.00	19771
10	2022	P	7.50	2120	9	2022	C	7.00	19534
10	2022	P	9.50	2068	12	2022	C	5.00	18218
10	2022	P	9.40	2004	3	2023	P	3.00	18152
12	2022	P	7.00	1952	10	2023	P	2.50	17300
12	2022	C	11.00	1907	10	2022	C	8.00	17240
10	2022	P	5.00	1828	2	2023	C	10.00	16948
10	2022	C	10.50	1756	10	2022	P	2.00	16759
11	2022	P	7.00	1651	9	2022	P	3.00	16612
9	2022	P	9.50	1629	4	2023	P	3.00	16604
9	2022	C	10.10	1578	1	2023	C	10.00	16460
4	2023	P	3.00	1575	9	2022	C	9.00	16287
5	2023	P	3.00	1575	3	2023	C	20.00	16257
6	2023	P	3.00	1575	9	2022	C	4.00	15969
7	2023	P	3.00	1575	10	2022	P	5.50	15763
8	2023	P	3.00	1575	9	2022	P	2.50	15478
9	2023	P	3.00	1575	10	2023	P	3.00	15478
10	2023	P	3.00	1575	10	2022	P	3.25	15350
4	2023	P	2.50	1520	10	2023	P	2.00	15280
9	2022	P	9.25	1504	9	2022	P	7.00	15252
5	2023	P	2.50	1400	10	2022	C	7.00	15090
6	2023	P	2.50	1400	9	2022	P	2.75	14887
7	2023	P	2.50	1400	9	2022	P	5.00	14472
8	2023	P	2.50	1400	2	2023	C	9.00	14364
9	2023	P	2.50	1400	11	2022	P	5.00	14059
10	2023	P	2.50	1400	9	2022	P	3.50	14015
9	2022	P	8.75	1377	12	2022	C	6.00	13987
10	2022	P	6.50	1303	5	2023	P	3.00	13958
11	2022	C	15.00	1303	6	2023	P	3.00	13955
10	2022	C	17.00	1301	9	2022	P	6.50	13919
11	2022	P	5.00	1250	11	2022	C	12.00	13868
1	2023	P	2.50	1250	11	2022	C	10.00	13817
					9	2022	C	12	13803.75

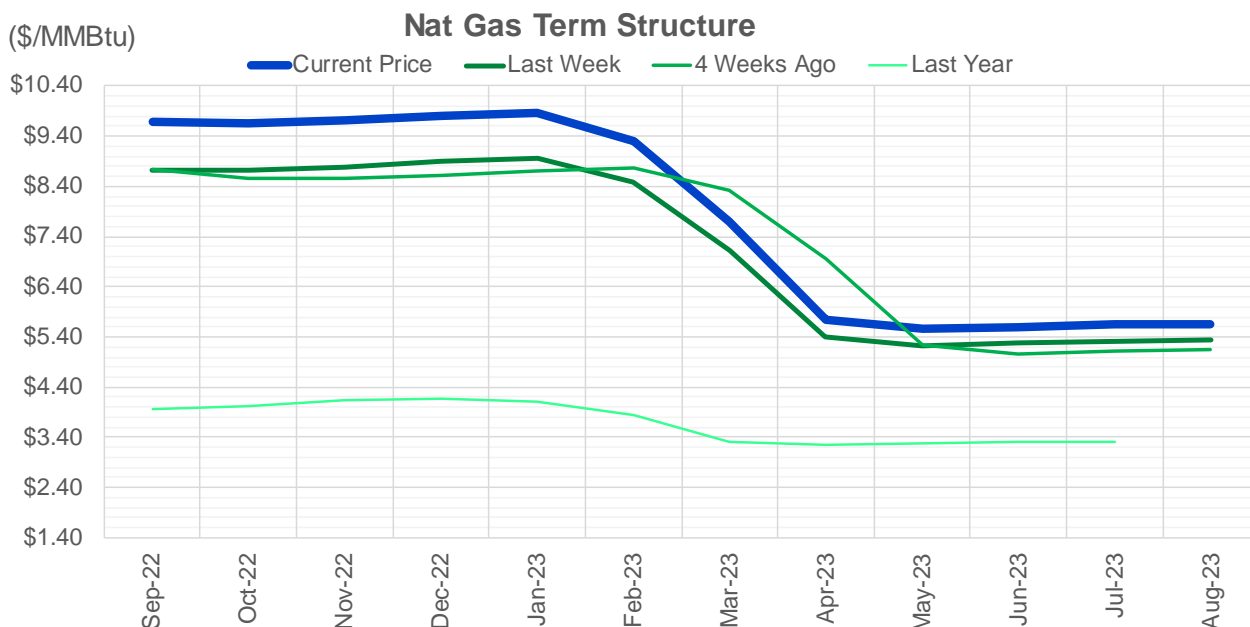
Source: CME, ICE

Nat Gas Futures Open Interest CME and ICE Combined

CME Henry Hub Futures (10,000 MMBtu)				ICE Henry Hub Futures Contract Equivalent (10,000 MM			
	Current	Prior	Daily Change		Current	Prior	Daily Change
SEP 22	22702	31445	-8743	SEP 22	81990	78917	3073
OCT 22	122087	120140	1947	OCT 22	80502	78479	2023
NOV 22	122033	121562	471	NOV 22	68882	66613	2269
DEC 22	65846	66602	-756	DEC 22	68115	68481	-366
JAN 23	85384	85113	271	JAN 23	67231	66331	900
FEB 23	37084	36953	131	FEB 23	62393	62314	79
MAR 23	58479	57151	1328	MAR 23	54912	54748	164
APR 23	72209	71472	737	APR 23	56828	57153	-325
MAY 23	73655	73601	54	MAY 23	55583	55281	303
JUN 23	23627	23689	-62	JUN 23	46856	46825	31
JUL 23	24831	24243	588	JUL 23	46303	46166	138
AUG 23	18512	18583	-71	AUG 23	45140	45007	133
SEP 23	20872	20344	528	SEP 23	44018	43814	204
OCT 23	51351	50578	773	OCT 23	51553	51288	264
NOV 23	13784	13602	182	NOV 23	45688	45618	70
DEC 23	12454	12692	-238	DEC 23	41383	41341	42
JAN 24	19379	19533	-154	JAN 24	40195	40115	80
FEB 24	8100	7916	184	FEB 24	31033	30527	506
MAR 24	18292	17805	487	MAR 24	35648	35238	411
APR 24	14429	14308	121	APR 24	28438	28457	-19
MAY 24	7201	7200	1	MAY 24	27365	27351	14
JUN 24	2658	2645	13	JUN 24	24440	24393	47
JUL 24	2487	2431	56	JUL 24	24376	24329	48
AUG 24	3308	3309	-1	AUG 24	23940	23908	32
SEP 24	1970	1976	-6	SEP 24	23891	23844	47
OCT 24	8918	8942	-24	OCT 24	27430	27311	119
NOV 24	4952	4834	118	NOV 24	24999	24936	63
DEC 24	8072	7897	175	DEC 24	28295	28229	66
JAN 25	16618	16604	14	JAN 25	21797	21758	39
FEB 25	982	982	0	FEB 25	14432	14439	-7

Source: CME, ICE





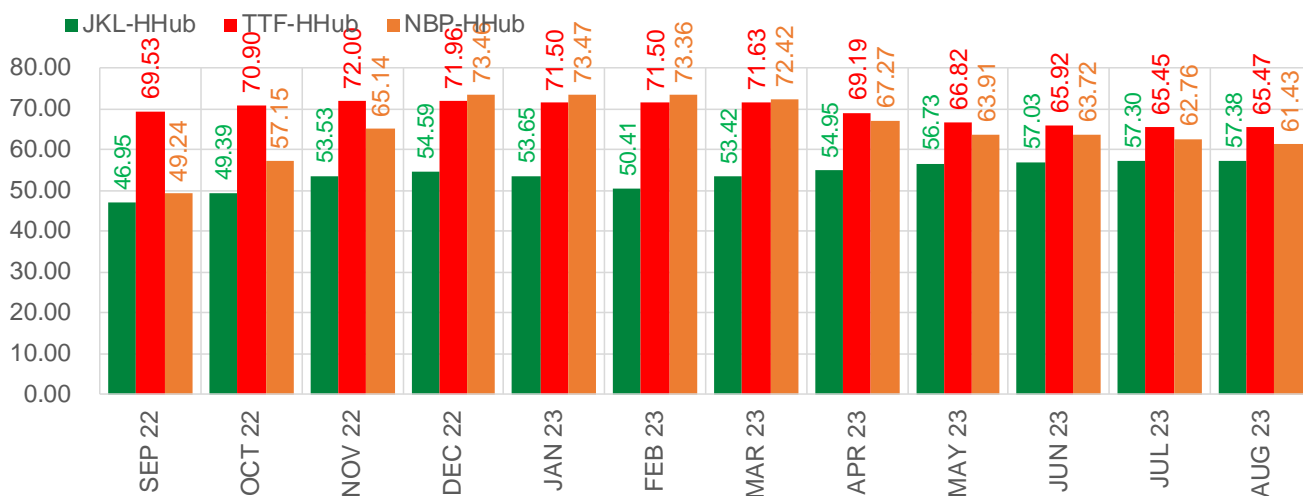
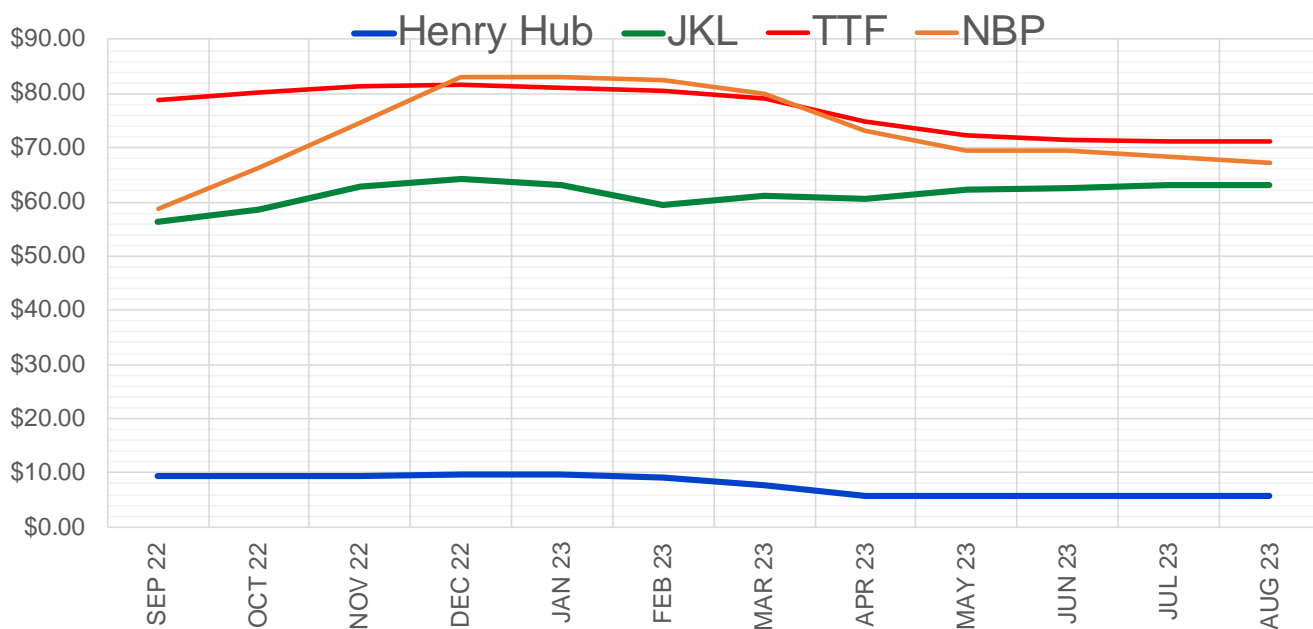
	Sep-22	Oct-22	Nov-22	Dec-22	Jan-23	Feb-23	Mar-23	Apr-23	May-23	Jun-23	Jul-23	Aug-23
Current Price	\$9.680	\$9.647	\$9.710	\$9.810	\$9.862	\$9.309	\$7.687	\$5.752	\$5.557	\$5.602	\$5.649	\$5.662
Last Week	\$8.728	\$8.712	\$8.788	\$8.903	\$8.963	\$8.497	\$7.108	\$5.394	\$5.220	\$5.268	\$5.318	\$5.329
vs. Last Week	\$0.952	\$0.935	\$0.922	\$0.907	\$0.899	\$0.812	\$0.579	\$0.358	\$0.337	\$0.334	\$0.331	\$0.333
4 Weeks Ago	\$8.727	\$8.571	\$8.552	\$8.626	\$8.706	\$8.769	\$8.321	\$6.969	\$5.240	\$5.057	\$5.107	\$5.159
vs. 4 Weeks Ago	\$0.953	\$1.076	\$1.158	\$1.184	\$1.156	\$0.540	-\$0.634	-\$1.217	\$0.317	\$0.545	\$0.542	\$0.503
Last Year	\$3.945	\$3.960	\$4.024	\$4.126	\$4.183	\$4.105	\$3.847	\$3.315	\$3.240	\$3.270	\$3.304	\$3.312
vs. Last Year	\$5.735	\$5.687	\$5.686	\$5.684	\$5.679	\$5.204	\$3.840	\$2.437	\$2.317	\$2.332	\$2.345	\$2.350

	Units	Cash Settled	Prompt Settle	Cash to Prompt
AGT Citygate	\$/MMBtu	9.60	8.77	-0.83
TETCO M3	\$/MMBtu	9.36	8.17	-1.19
FGT Zone 3	\$/MMBtu	9.41	10.16	0.75
Zone 6 NY	\$/MMBtu	9.41	8.24	-1.17
Chicago Citygate	\$/MMBtu	9.17	8.97	-0.20
Michcon	\$/MMBtu	9.13	8.91	-0.22
Columbia TCO Pool	\$/MMBtu	9.07	8.22	-0.86
Ventura	\$/MMBtu	5.95	8.86	2.91
Rockies/Opal	\$/MMBtu	8.88	8.75	-0.13
El Paso Permian Basin	\$/MMBtu	8.37	8.06	-0.31
Socal Citygate	\$/MMBtu	10.05	10.04	-0.01
Malin	\$/MMBtu	8.68	8.99	0.31
Houston Ship Channel	\$/MMBtu	9.07	8.90	-0.18
Henry Hub Cash	\$/MMBtu	9.75	8.77	-0.98
AECO Cash	C\$/GJ	1.59	5.08	3.49
Station2 Cash	C\$/GJ	0.78	8.63	7.85
Dawn Cash	C\$/GJ	9.21	8.91	-0.30

Source: CME, Bloomberg

	Units	Current Price	vs. Last Week	vs. 4 Weeks Ago	vs. Last Year
NatGas Jul21/Oct21	\$/MMBtu	2.224	▲ 0.000	▲ 0.000	▲ 1.925
NatGas Oct21/Nov21	\$/MMBtu	0.361	▲ 0.000	▲ 0.000	▲ 0.295
NatGas Oct21/Jan22	\$/MMBtu	-1.817	▲ 0.000	▲ 0.000	▼ -2.050
NatGas Apr22/Oct22	\$/MMBtu	3.819	▼ -0.156	▲ 0.361	▲ 3.803
WTI Crude	\$/Bbl	93.74	▲ 7.210	▼ -1.240	▲ 26.200
Brent Crude	\$/Bbl	100.22	▲ 7.880	▼ -4.180	▲ 29.170
Fuel Oil, NY Harbour 1%	\$/Bbl	97.18	▲ 0.000	▲ 0.000	▲ 0.000
Heating Oil	cents/Gallon	384.19	▲ 36.170	▲ 25.800	▲ 177.510
Propane, Mt. Bel	cents/Gallon	1.09	▲ 0.030	▼ -0.048	▼ -0.016
Ethane, Mt. Bel	cents/Gallon	0.61	▼ -0.002	▲ 0.028	▲ 0.271
Coal, PRB	\$/MTon	12.30	▲ 0.000	▲ 0.000	▲ 0.000
Coal, PRB	\$/MMBtu	0.70			
Coal, ILB	\$/MTon	31.05	▲ 0.000	▲ 0.000	▲ 0.000
Coal, ILB	\$/MMBtu	1.32			

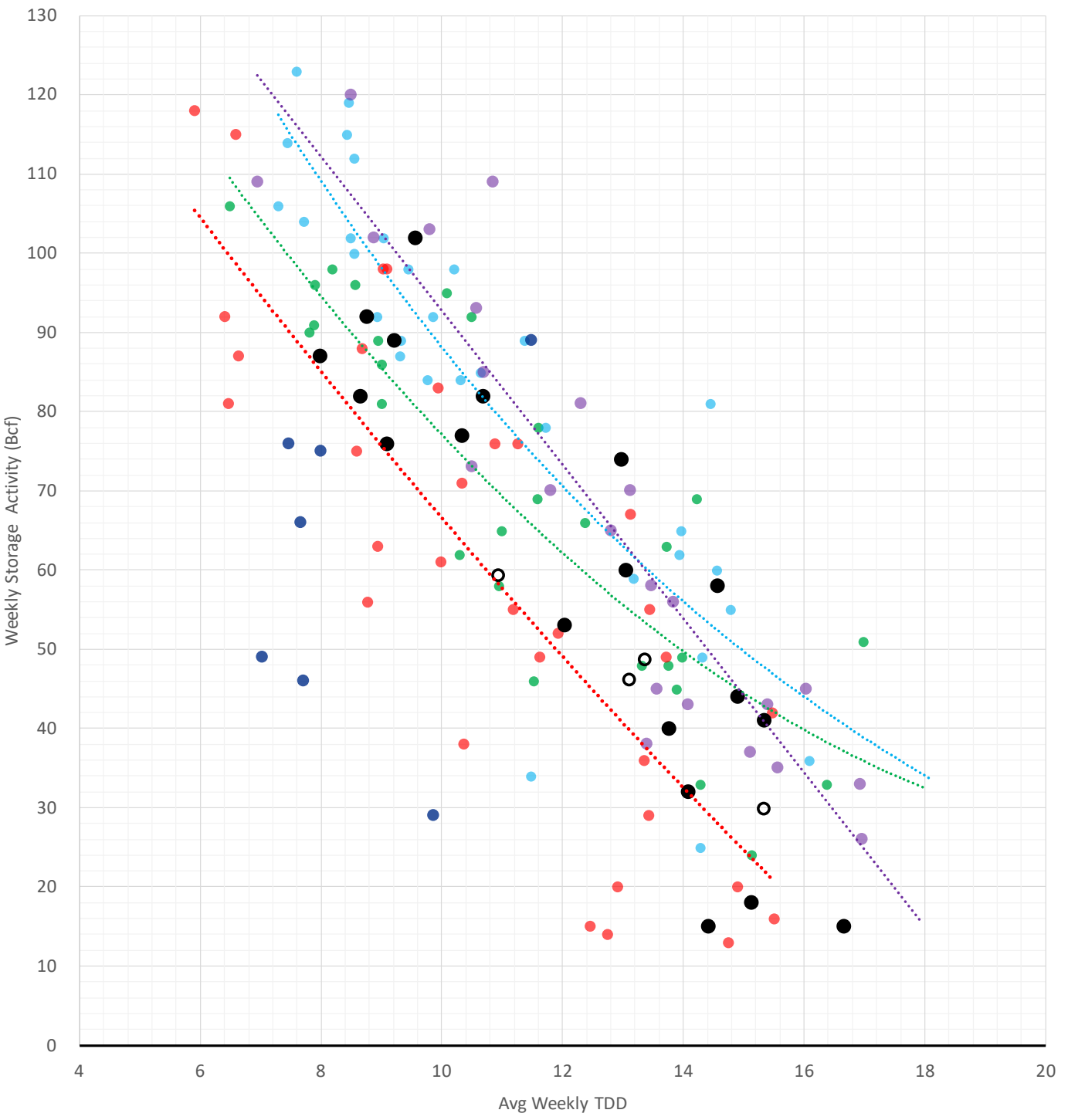
Nat Gas Term Structure (\$MMBTU)



	SEP 22	OCT 22	NOV 22	DEC 22	JAN 23	FEB 23	MAR 23	APR 23	MAY 23	JUN 23	JUL 23	AUG 23
Henry Hub	\$9.381	\$9.341	\$9.432	\$9.570	\$9.604	\$9.095	\$7.594	\$5.769	\$5.590	\$5.630	\$5.682	\$5.685
JKL	\$56.330	\$58.730	\$62.960	\$64.155	\$63.250	\$59.500	\$61.015	\$60.720	\$62.315	\$62.660	\$62.985	\$63.065
JKL-HHub	\$46.949	\$49.389	\$53.528	\$54.585	\$53.646	\$50.405	\$53.421	\$54.951	\$56.725	\$57.030	\$57.303	\$57.380
TTF	\$78.915	\$80.237	\$81.430	\$81.532	\$81.101	\$80.599	\$79.220	\$74.957	\$72.408	\$71.547	\$71.133	\$71.150
TTF-HHub	\$69.534	\$70.896	\$71.998	\$71.962	\$71.497	\$71.504	\$71.626	\$69.188	\$66.818	\$65.917	\$65.451	\$65.465
NBP	\$58.617	\$66.488	\$74.572	\$83.026	\$83.069	\$82.456	\$80.012	\$73.036	\$69.502	\$69.350	\$68.438	\$67.112
NBP-HHub	\$49.236	\$57.147	\$65.140	\$73.456	\$73.465	\$73.361	\$72.418	\$67.267	\$63.912	\$63.720	\$62.756	\$61.427

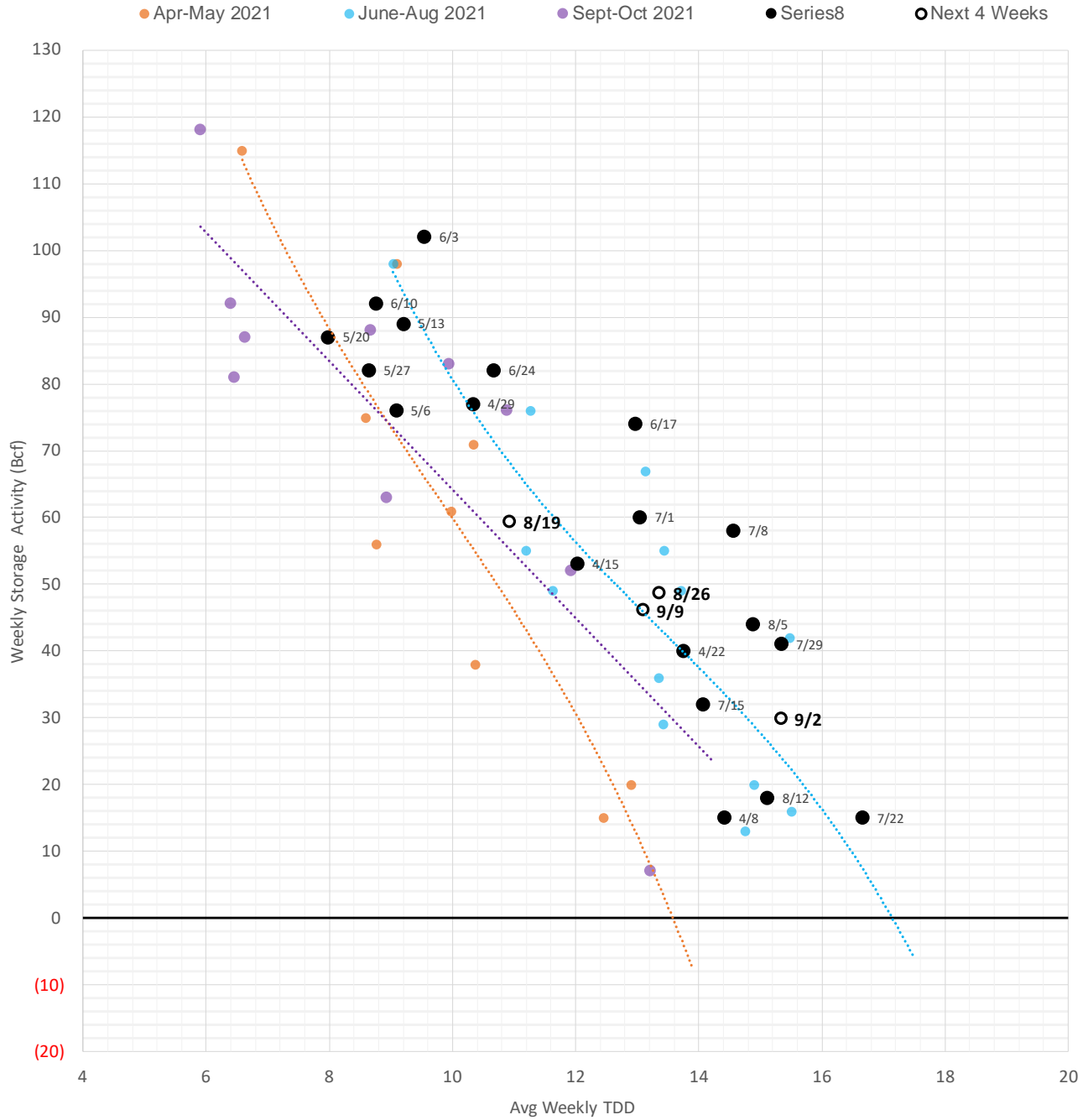
Weather Storage Model - Next 4 Week Forecast

● Summer 18 ● Summer 19 ● Summer 20 Apr-Aug ● Summer 20 Sept-Oct ● Summer 21 ● Summer 22 ○ Next 4 Weeks



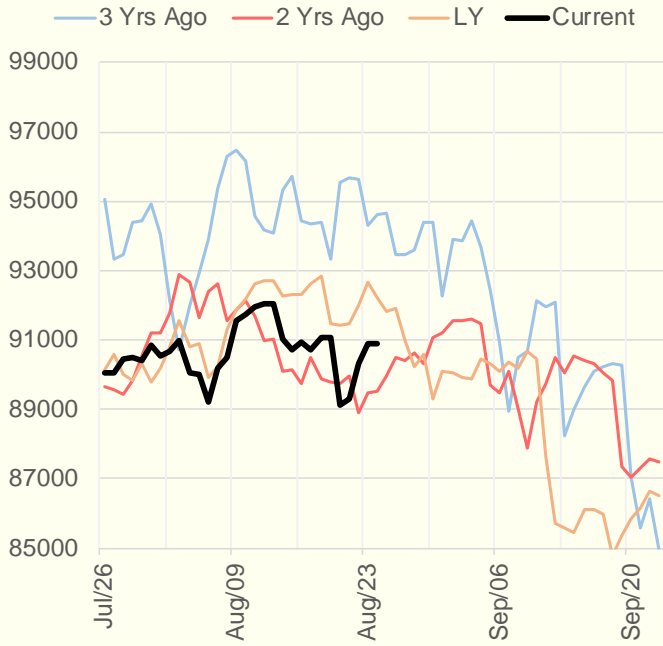
The risk of trading futures and options and other derivatives involves a substantial risk of loss and is not suitable for all persons. Each person must consider whether a particular trade, combination of trades, or strategy is suitable for that person's financial means and objectives. Past results are not necessarily indicative of future results. This communication may contain links to third party websites which are not under the control of and are not maintained by ION Energy Group, and ION Energy Group is not responsible for their content.

Weather Storage Model - Next 4 Week Forecast

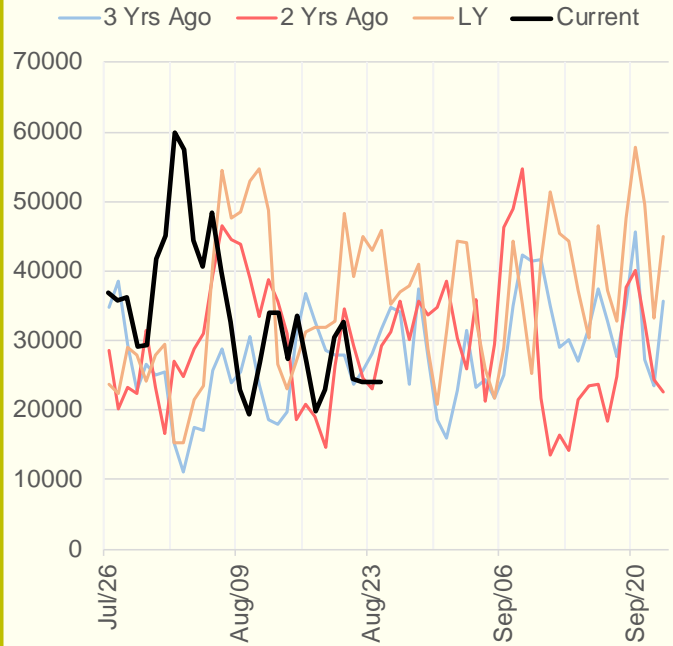


The risk of trading futures and options and other derivatives involves a substantial risk of loss and is not suitable for all persons. Each person must consider whether a particular trade, combination of trades, or strategy is suitable for that person's financial means and objectives. Past results are not necessarily indicative of future results. This communication may contain links to third party websites which are not under the control of and are not maintained by ION Energy Group, and ION Energy Group is not responsible for their content.

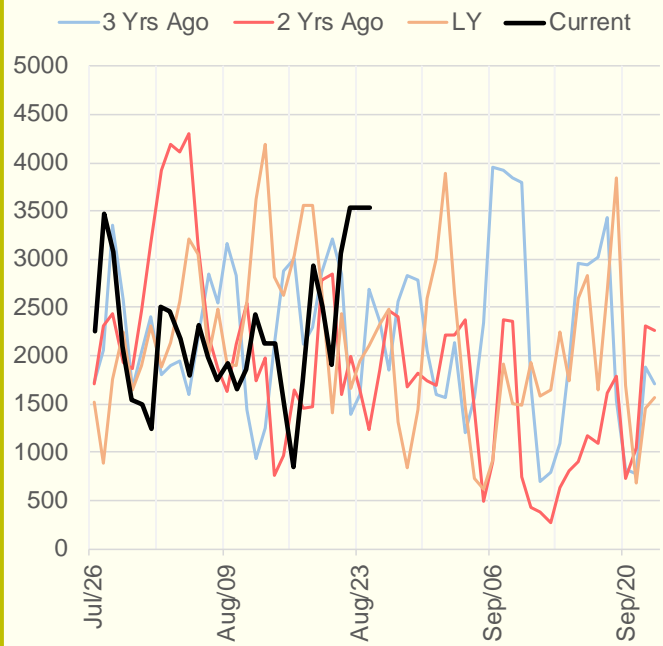
NRC Nuclear Daily Output



US Wind



CALI Wind



TEXAS Wind

