

	Current	Δ from YD	Δ from 7D Avg
Nat Gas Prompt	\$ 9.51	▲ \$ 0.13	▲ \$ 0.14

	Current	Δ from YD	Δ from 7D Avg
WTI Prompt	\$ 93.50	▲ \$ 0.98	▲ \$ 1.5

	Current	Δ from YD	Δ from 7D Avg
Brent Prompt	\$ 100.67	▲ \$ 1.33	▲ \$ 2.5

Page Menu

[Short-term Weather Model Outlooks](#)

[Lower 48 Component Models](#)

[Regional S/D Models Storage Projection](#)

[Weather Model Storage Projection](#)

[Supply – Demand Trends](#)

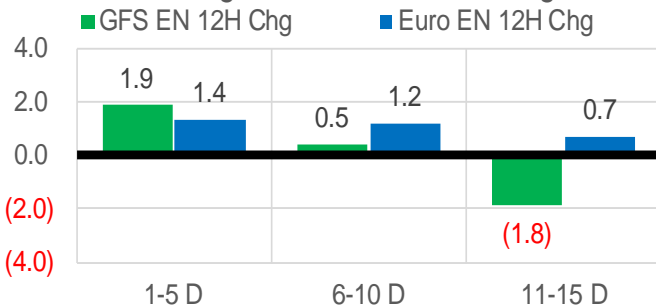
[Nat Gas Options Volume and Open Interest](#)

[Nat Gas Futures Open Interest](#)

[Price Summary](#)

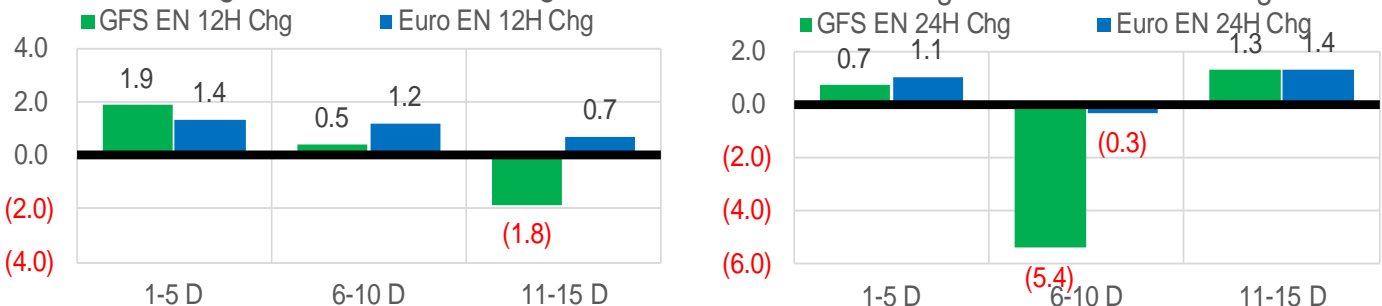
Vs. 12H Ago

L48 Region - 00z TDD vs 12H Ago



Vs. 24H Ago

L48 Region - 00z TDD vs 24H Ago



	Current	Δ from YD	Δ from 7D Avg
US Dry Production	99.4	▲ 0.40	▲ 0.69

	Current	Δ from YD	Δ from 7D Avg
US Power Burns	41.5	▼ -1.44	▲ 0.18

	Current	Δ from YD	Δ from 7D Avg
US ResComm	8.2	▼ -0.18	▲ 0.08

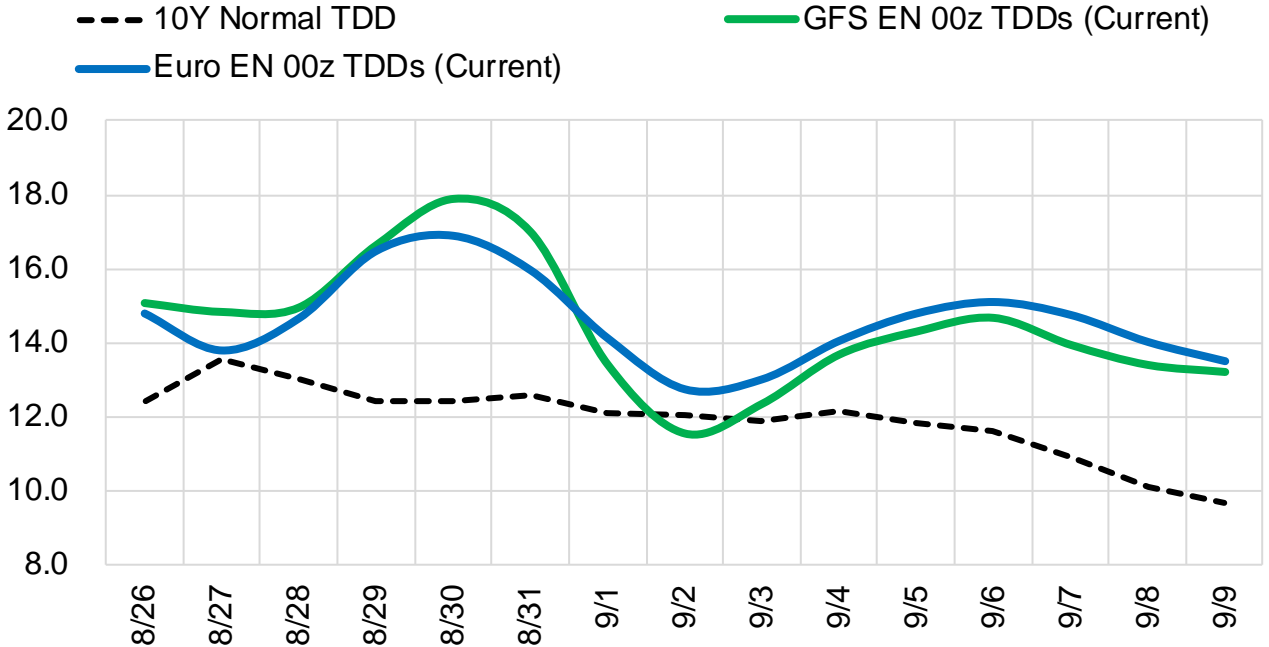
	Current	Δ from YD	Δ from 7D Avg
Canadian Imports	5.8	▲ 0.29	▲ 0.41

	Current	Δ from YD	Δ from 7D Avg
Net LNG Exports	11.5	▲ 0.06	▲ 0.40

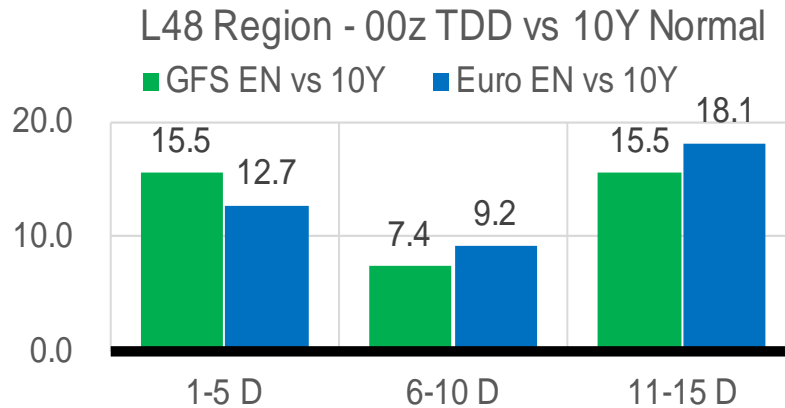
	Current	Δ from YD	Δ from 7D Avg
Mexican Exports	6.9	▼ -0.05	▲ 0.16

Short-term Weather Model Outlooks (00z)

L48 Region



Vs. 10Y Normal



Source: WSI , Bloomberg

Lower 48 Component Models

Daily Balances

	20-Aug	21-Aug	22-Aug	23-Aug	24-Aug	25-Aug	26-Aug	DoD	vs. 7D
Lower 48 Dry Production	99.1	99.0	99.1	98.2	98.6	99.0	99.4	▲ 0.4	▲ 0.6
Canadian Imports	5.1	5.2	5.3	5.7	5.7	5.5	5.8	▲ 0.3	▲ 0.4
L48 Power	39.4	39.2	41.2	42.6	43.0	42.9	41.5	▼ -1.4	▲ 0.1
L48 Residential & Commercial	7.7	7.7	8.2	8.3	8.3	8.3	8.2	▼ -0.2	▲ 0.1
L48 Industrial	21.2	21.0	21.0	21.2	21.5	22.0	22.4	▲ 0.5	▲ 1.1
L48 Lease and Plant Fuel	5.4	5.4	5.4	5.3	5.4	5.4	5.4	▲ 0.0	▲ 0.0
L48 Pipeline Distribution	2.5	2.5	2.6	2.7	2.7	2.7	2.6	▼ -0.1	▲ 0.0
L48 Regional Gas Consumption	76.2	75.9	78.4	80.1	80.9	81.4	80.1	▼ -1.3	▲ 1.3
Net LNG Delivered	11.14	10.97	10.74	10.94	11.38	11.44	11.49	▲ 0.1	▲ 0.4
Total Mexican Exports	6.5	6.4	6.9	7.0	7.0	7.0	6.9	▼ -0.1	▲ 0.2
Implied Daily Storage Activity	10.4	10.9	8.5	5.9	5.0	4.8	6.7		
EIA Reported Daily Storage Activity									
Daily Model Error									

EIA Storage Week Balances

	22-Jul	29-Jul	5-Aug	12-Aug	19-Aug	26-Aug	WoW	vs. 4W
Lower 48 Dry Production	97.4	97.7	99.1	98.5	98.1	98.7	▲ 0.6	▲ 0.4
Canadian Imports	6.2	5.9	5.7	5.4	4.8	5.4	▲ 0.6	▼ 0.0
L48 Power	45.5	44.8	44.4	45.7	39.7	41.3	▲ 1.7	▼ -2.3
L48 Residential & Commercial	8.7	8.6	8.3	8.4	7.9	8.1	▲ 0.2	▼ -0.2
L48 Industrial	21.0	19.4	20.6	21.5	21.7	21.3	▼ -0.4	▲ 0.5
L48 Lease and Plant Fuel	5.3	5.3	5.4	5.4	5.3	5.4	▲ 0.0	▲ 0.0
L48 Pipeline Distribution	2.9	2.8	2.8	2.9	2.5	2.6	▲ 0.1	▼ -0.1
L48 Regional Gas Consumption	83.3	80.9	81.5	83.8	77.1	78.7	▲ 1.6	▼ -2.1
Net LNG Exports	10.8	10.7	10.9	10.9	10.9	11.1	▲ 0.2	▲ 0.2
Total Mexican Exports	7.1	6.9	6.9	7.0	6.9	6.8	▼ -0.2	▼ -0.2
Implied Daily Storage Activity	2.3	5.1	5.4	2.2	7.9	7.6	-0.4	
EIA Reported Daily Storage Activity	2.1	5.9	6.3	2.6	8.6			
Daily Model Error	0.2	-0.8	-0.9	-0.3	-0.6			

Monthly Balances

	2Yr Ago Aug-20	LY Aug-21	Apr-22	May-22	Jun-22	Jul-22	MTD Aug-22	MoM	vs. LY
Lower 48 Dry Production	88.9	93.9	95.1	96.0	97.1	97.4	98.5	▲ 1.1	▲ 4.6
Canadian Imports	4.9	5.1	5.8	5.1	5.7	5.9	5.3	▼ -0.6	▲ 0.1
L48 Power	41.0	40.4	25.1	29.7	36.8	43.4	42.8	▼ -0.7	▲ 2.4
L48 Residential & Commercial	7.7	7.9	22.3	12.4	9.0	8.5	8.2	▼ -0.3	▲ 0.3
L48 Industrial	20.8	21.0	20.1	19.8	20.6	20.3	21.4	▲ 1.1	▲ 0.4
L48 Lease and Plant Fuel	4.8	5.1	5.2	5.3	5.2	5.3	5.4	▲ 0.1	▲ 0.3
L48 Pipeline Distribution	2.5	2.6	2.6	2.4	2.5	2.8	2.7	▼ -0.1	▲ 0.1
L48 Regional Gas Consumption	76.9	77.0	75.3	69.6	74.2	80.2	80.4	▲ 0.2	▲ 3.4
Net LNG Exports	4.0	10.5	12.3	12.5	11.2	10.9	11.0	▲ 0.0	▲ 0.5
Total Mexican Exports	6.0	6.9	6.7	7.0	7.1	7.0	6.9	▼ -0.1	▲ 0.0
Implied Daily Storage Activity	6.8	4.7	6.6	12.0	10.3	5.2	5.5		
EIA Reported Daily Storage Activity									
Daily Model Error									

Source: Bloomberg, analytix.ai

Daily Average Generation Data

Nuclear Generation Daily Average - GWh (NRC)

	18-Aug	19-Aug	20-Aug	21-Aug	22-Aug	23-Aug	24-Aug	DoD	vs. 7D
NRC Nuclear Daily Output	91.1	91.1	89.1	89.3	90.3	90.9	90.9	0.0	0.6
NRC Nuclear Max Capacity	104.9	104.9	104.9	104.9	104.9	104.9	104.9	0.0	0.0
NRC Nuclear Outage	13.8	13.8	15.7	15.6	14.6	14.0	14.0	0.0	-0.6
NRC % Nuclear Cap Utilization	92.6	92.6	90.6	90.8	91.8	92.4	92.4	0.0	0.6

Wind Generation Daily Average - MWh (EIA)

	18-Aug	19-Aug	20-Aug	21-Aug	22-Aug	23-Aug	24-Aug	DoD	vs. 7D
CALI Wind	2933	2514	1909	3062	3535	1819	1516	-303	-1113
TEXAS Wind	5441	5915	10405	7764	8295	3324	3215	-109	-3642
US Wind	22824	30537	32575	24396	23838	17130	17652	522	-7564

Generation Daily Average - MWh (EIA)

	18-Aug	19-Aug	20-Aug	21-Aug	22-Aug	23-Aug	24-Aug	DoD	vs. 7D
US Wind	22824	30537	32575	24396	23838	17130	17652	522	-7564
US Solar	16336	15323	15388	15018	14930	16274	15836	-438	291
US Petroleum	1041	1019	1058	1013	1008	1093	1042	-52	3
US Other	9943	9973	9875	9422	10151	10328	10570	243	622
US Coal	109818	107291	104735	105180	112012	114297	119086	4789	10197
US Nuke	93829	93374	91702	92047	93069	93332	93101	-231	209
US Hydro	32147	32244	28452	25808	29063	29698	31229	1531	1660
US Gas	225331	219290	210492	206537	227599	233789	237488	3699	16982

See National Wind and Nuclear daily charts

Source: Bloomberg, analytix.ai

Storage Week Average Generation Data

Nuclear Generation Weekly Average - GWh (NRC)

	22-Jul	29-Jul	5-Aug	12-Aug	19-Aug	26-Aug	WoW	WoW Bcf/d Impact
NRC Nuclear Daily Output	90.5	90.1	90.6	90.7	91.2	90.3	-0.9	0.2
NRC Nuclear Max Capacity	104.9	104.9	104.9	104.9	104.9	104.9	0.0	
NRC Nuclear Outage	14.4	14.8	14.3	14.1	13.7	14.5	0.9	
NRC % Nuclear Cap Utilization	92.0	91.6	92.1	92.3	92.8	91.9	-0.9	

Wind Generation Weekly Average - MWh (EIA)

	22-Jul	29-Jul	5-Aug	12-Aug	19-Aug	26-Aug	WoW	WoW Bcf/d Impact
CALI Wind	2470	3049	1933	1901	1953	2267	314	-0.1
TEXAS Wind	11182	14533	14443	8762	7139	6019	-1120	0.2
US Wind	40505	44003	43887	32976	28368	23397	-4971	0.9
							-18%	
							-0.2	

Generation Weekly Average - MWh (EIA)

	22-Jul	29-Jul	5-Aug	12-Aug	19-Aug	26-Aug	WoW	WoW Bcf/d Impact
						est.		
US Wind	40505	44003	43887	32976	28368	23397	-4971	0.9
US Solar	18727	18098	17577	17568	16887	15515	-1372	0.2
US Petroleum	1707	1465	1131	1737	1045	1039	-6	0.0
US Other	10492	10690	10470	10725	9844	10127	284	-0.1
US Coal	121563	128742	122297	122575	111349	111670	320	-0.1
US Nuke	92543	92281	92607	92966	94032	92818	-1214	0.2
US Hydro	33645	32210	31339	30400	29926	29675	-251	0.0
US Gas	249149	238167	236187	252451	217716	224669	6953	1.3

See National Wind and Nuclear daily charts

Source: Bloomberg, analytix.ai

Monthly Average Generation Data

Nuclear Generation Monthly Average - GWh (NRC)

	2Yr Ago	LY	MTD				Last 30 days	MoM (MTD vs LY)	Last 30 days YoY
	Same 30 days	Same 30 days	May-22	Jun-22	Jul-22	Aug-22			
NRC Nuclear Daily Output	90.8	91.5	81.7	88.5	90.6	90.7	90.7	0.2	-0.8
NRC Nuclear Max Capacity	104.9	104.9	104.9	104.9	104.9	104.9	104.9	0.0	0.0
NRC Nuclear Outage	14.1	13.4	23.2	16.3	14.3	14.1	14.2	-0.2	0.8
NRC % Nuclear Cap Utilization	92.3	93.0	83.0	90.0	92.1	92.3	92.2	0.2	-0.8

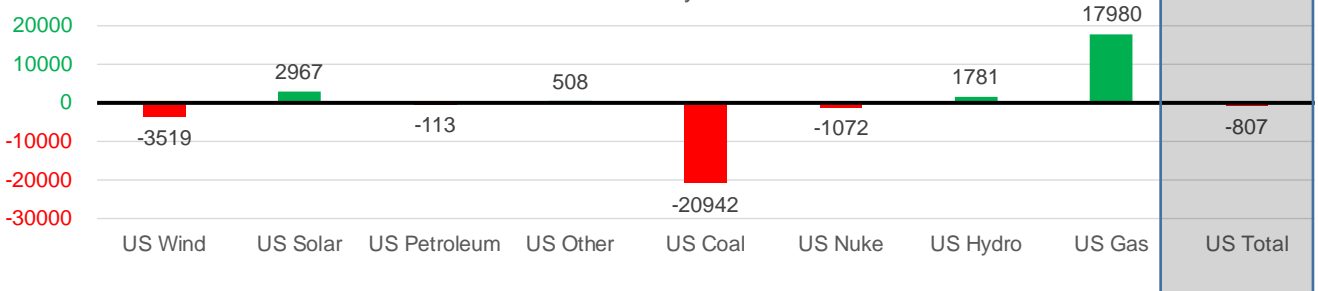
Wind Generation Monthly Average - MWh (EIA)

	2Yr Ago	LY	MTD				Last 30 days	MoM (MTD vs LY)	Last 30 days YoY
	Same 30 days	Same 30 days	May-22	Jun-22	Jul-22	Aug-22			
CALI Wind	2279	2468	3361	2875	2719	2029	2033	-690	-436
TEXAS Wind	8479	9916	16756	13441	11765	8512	9008	-3254	-908
US Wind	29583	35326	56649	47161	39701	31451	31808	-8250	-3519

Generation Monthly Average - MWh (EIA)

	2Yr Ago	LY	MTD				Last 30 days	MoM (MTD vs LY)	Last 30 days YoY
	Same 30 days	Same 30 days	May-22	Jun-22	Jul-22	Aug-22			
US Wind	29583	35326	56649	47161	39701	31451	31808	▲ 357.2	▼ -3519
US Solar	10908	13925	18212	19386	18593	16761	16892	▲ 130.6	▲ 2967
US Petroleum	1266	1351	518	998	1252	1271	1238	▼ -34	▼ -113
US Other	9876	9809	7723	8530	9961	10302	10317	▲ 15	▲ 508
US Coal	122571	138382	85695	105075	119788	117118	117441	▲ 322	▼ -20942
US Nuke	93008	94162	85496	89904	92883	93154	93090	▼ -64	▼ -1072
US Hydro	29654	28692	31811	37521	34185	30300	30472	▲ 172	▲ 1781
US Gas	224358	215462	157670	199821	235787	233615	233442	▲ 900	▲ 17980
US Total	518923	536848	443970	507970	551806	535568	536041	▲ 1443	▼ -807

Last 30 days YoY



See National Wind and Nuclear daily charts

Source: Bloomberg, analytix.ai

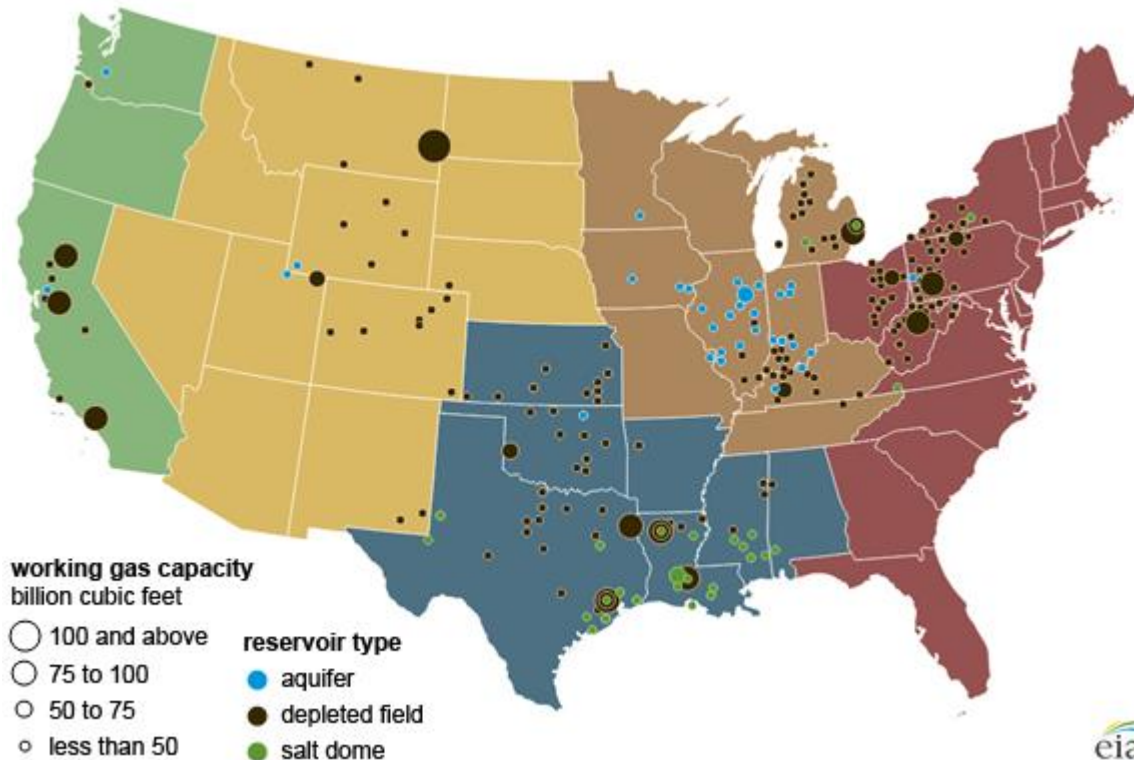
Regional S/D Models Storage Projection

Week Ending 26-Aug

	Daily Raw Storage	Daily Adjustment Factor	Daily Average Storage Activity (Adjusted) *	Weekly Adjusted Storage Activity
L48	7.8	-0.2	7.6	53
East	0.3	2.0	2.3	16
Midwest	4.9	-0.7	4.1	29
Mountain	4.6	-4.1	0.5	3
South Central	-2.2	3.2	1.0	7
Pacific	0.2	-0.5	-0.3	-2

*Adjustment Factor is calculated based on historical regional deltas

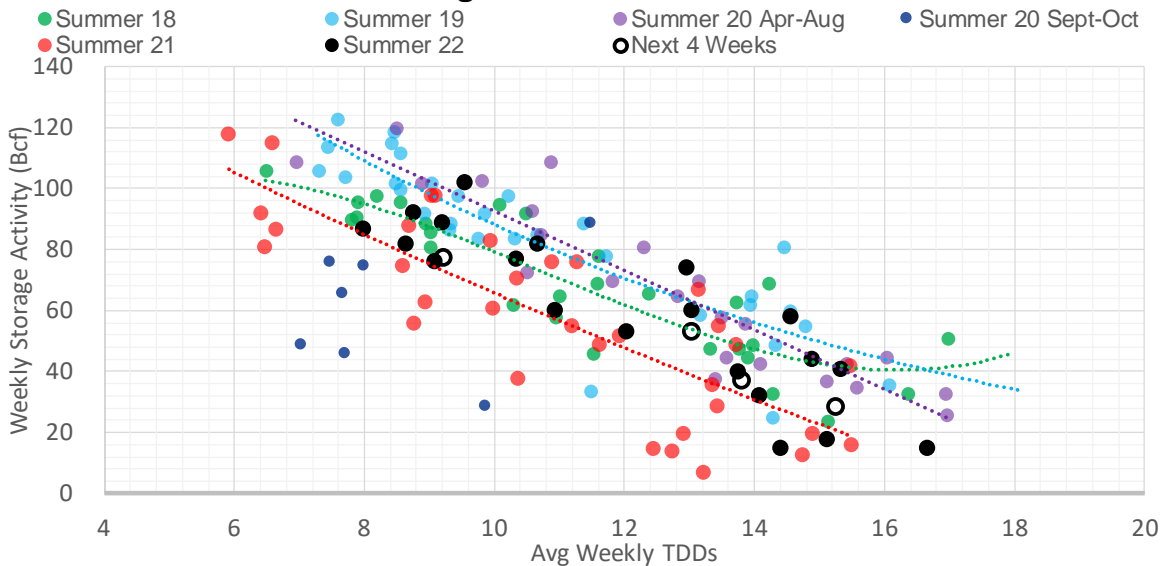
U.S. underground natural gas storage facilities by type (July 2015)



Weather Model Storage Projection

Next report and beyond		
Week Ending	GWDDs	Week Storage Projection
26-Aug	13.1	53
02-Sep	15.3	28
09-Sep	13.8	37
16-Sep	9.2	77

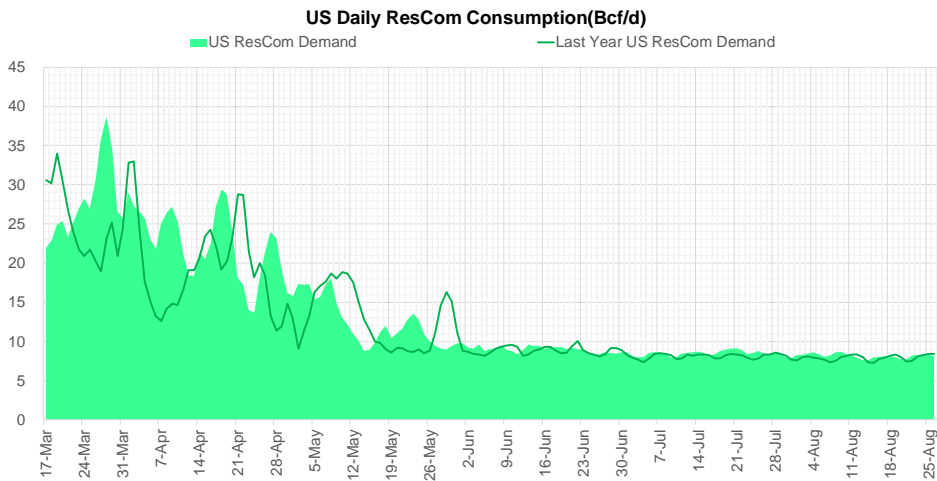
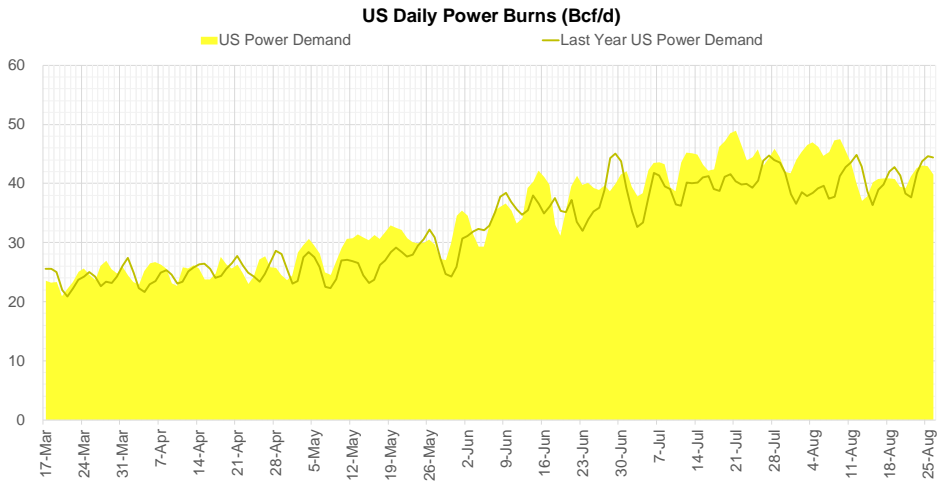
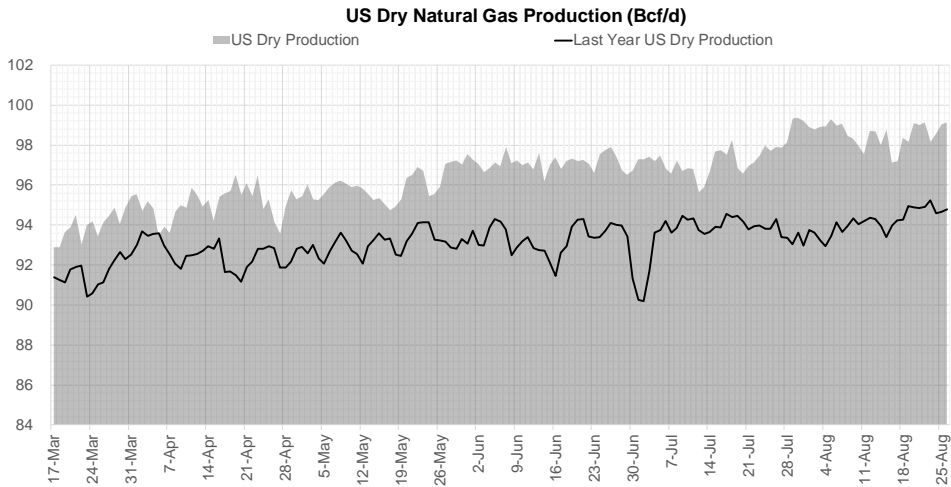
Weather Storage Model - Next 4 Week Forecast



Go to larger image



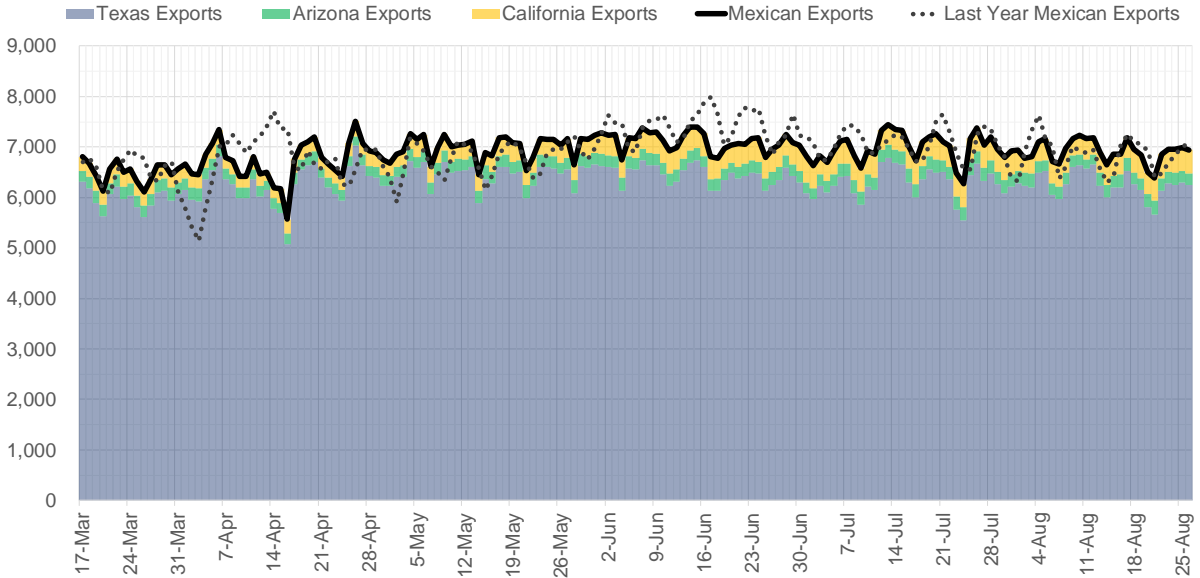
Supply – Demand Trends



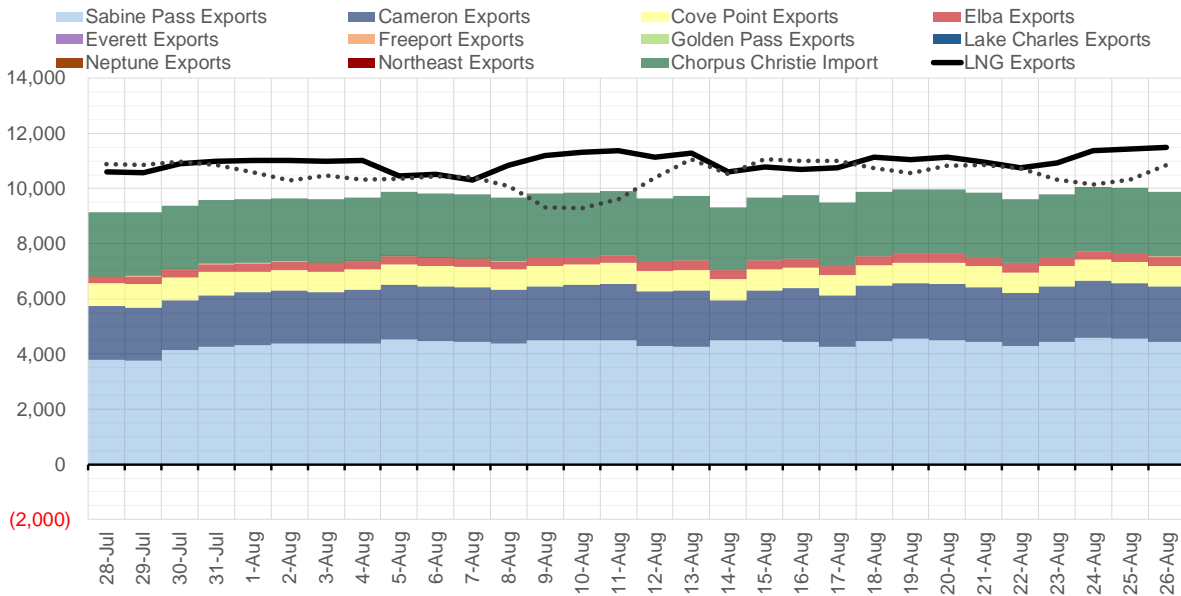
Source: Bloomberg

The risk of trading futures and options and other derivatives involves a substantial risk of loss and is not suitable for all persons. Each person must consider whether a particular trade, combination of trades, or strategy is suitable for that person's financial means and objectives. Past results are not necessarily indicative of future results. This communication may contain links to third party websites which are not under the control of and are not maintained by ION Energy Group, and ION Energy Group is not responsible for their content.

Mexican Exports (MMcf/d)



Net LNG Exports - Last 30 days (MMcf/d)



Source: Bloomberg

The risk of trading futures and options and other derivatives involves a substantial risk of loss and is not suitable for all persons. Each person must consider whether a particular trade, combination of trades, or strategy is suitable for that person's financial means and objectives. Past results are not necessarily indicative of future results. This communication may contain links to third party websites which are not under the control of and are not maintained by ION Energy Group, and ION Energy Group is not responsible for their content.

Nat Gas Options Volume and Open Interest CME and ICE Combined

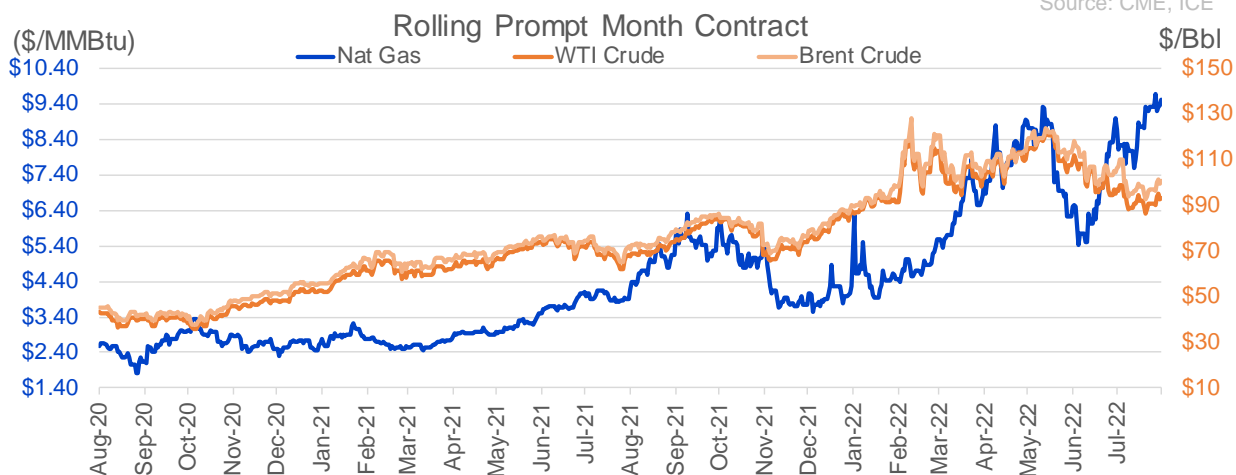
CONTRACT MONTH	CONTRACT YEAR	PUT/CALL	STRIKE	CUMULATIVE VOL	CONTRACT MONTH	CONTRACT YEAR	PUT/CALL	STRIKE	CUMULATIVE OI
11	2022	C	20.00	3641	10	2022	P	3.00	36667
11	2022	C	18.00	3636	10	2022	C	6.00	36011
10	2022	P	6.00	3621	10	2022	P	6.00	34322
9	2022	C	10.00	3378	10	2022	P	5.00	31271
11	2022	P	6.00	3202	10	2022	P	2.50	28111
9	2022	C	9.50	2599	9	2022	C	6.00	24363
9	2022	P	9.00	2394	10	2022	C	5.00	23273
10	2022	C	12.00	2235	10	2022	P	3.50	22249
10	2022	P	7.00	1800	3	2023	C	10.00	22003
2	2023	C	20.00	1770	10	2022	C	10.00	21616
2	2023	C	22.00	1750	10	2022	P	4.00	21252
12	2022	P	6.00	1700	10	2022	C	12.00	21104
11	2022	P	6.50	1636	5	2023	P	2.00	20997
10	2022	P	6.50	1533	12	2022	P	5.00	20871
10	2022	P	8.00	1525	9	2022	P	6.00	20520
10	2022	C	10.00	1469	9	2022	P	4.00	20463
4	2023	P	3.00	1450	9	2022	C	10.00	19993
5	2023	P	3.00	1450	11	2022	P	4.00	19821
6	2023	P	3.00	1450	9	2022	C	7.00	19521
7	2023	P	3.00	1450	12	2022	C	5.00	18218
8	2023	P	3.00	1450	3	2023	P	3.00	18152
9	2023	P	3.00	1450	10	2023	P	2.50	17350
10	2023	P	3.00	1450	10	2022	C	8.00	16974
12	2022	P	5.00	1400	10	2022	P	5.50	16775
11	2022	C	15.00	1270	10	2022	P	2.00	16759
9	2022	C	9.75	1213	4	2023	P	3.00	16659
9	2022	C	10.50	1182	9	2022	P	3.00	16612
11	2022	P	4.00	1075	2	2023	C	10.00	16253
4	2023	P	4.00	1025	9	2022	C	4.00	15969
5	2023	P	4.00	1025	3	2023	C	20.00	15862
6	2023	P	4.00	1025	1	2023	C	10.00	15769
7	2023	P	4.00	1025	9	2022	C	9.00	15579
8	2023	P	4.00	1025	10	2023	P	3.00	15578
9	2023	P	4.00	1025	9	2022	P	2.50	15478
10	2023	P	4.00	1025	10	2022	P	3.25	15350
1	2023	C	20.00	1020	9	2022	P	7.00	15290
9	2022	P	8.50	1013	10	2023	P	2.00	15280
12	2022	C	5.00	1000	10	2022	C	7.00	15090
1	2023	C	30.00	1000	9	2022	P	2.75	14887
12	2022	P	6.50	990	11	2022	C	12.00	14836
9	2022	P	9.25	972	9	2022	P	5.00	14472
10	2022	C	15.00	960	9	2022	C	12.00	14429
9	2022	P	8.75	932	1	2023	P	5.00	14308
3	2023	C	15.00	915	9	2022	P	3.50	14015
10	2022	P	7.50	889	12	2022	C	6.00	13981
10	2022	P	5.50	854	10	2022	C	11.00	13836
3	2023	C	11.00	766	11	2022	C	10.00	13748
3	2023	P	5.00	703	4	2023	P	2.75	13720
9	2022	P	9.30	693	10	2022	C	9.00	13695
					6	2023	P	3	13685

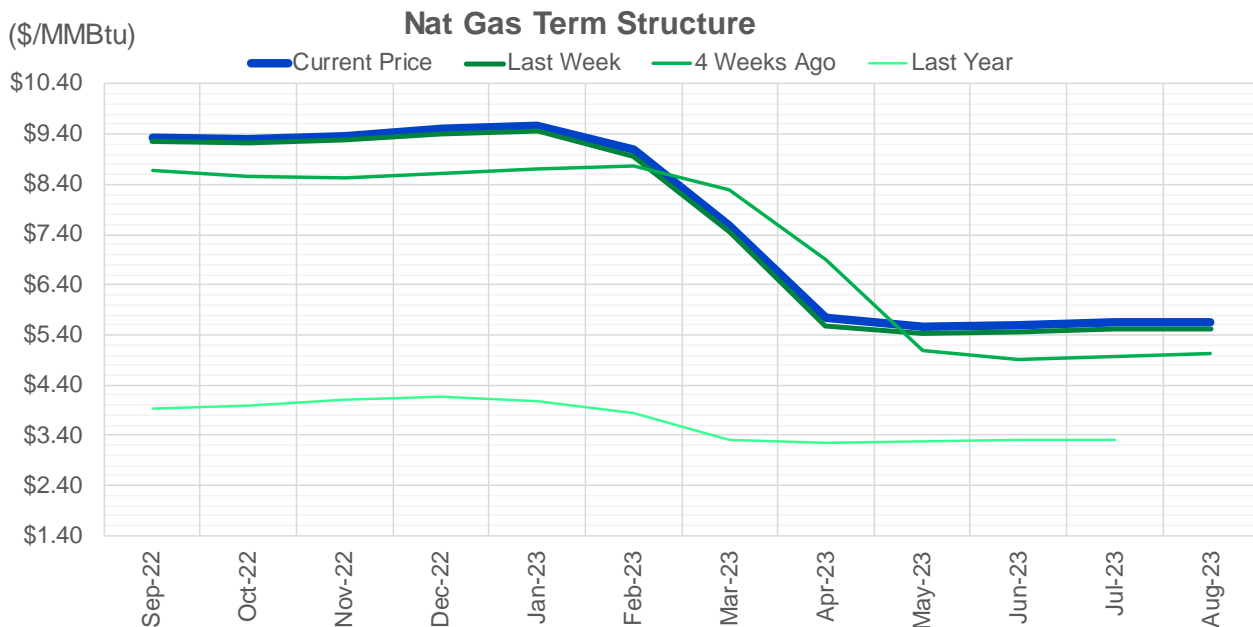
Source: CME, ICE

Nat Gas Futures Open Interest CME and ICE Combined

CME Henry Hub Futures (10,000 MMBtu)				ICE Henry Hub Futures Contract Equivalent (10,000 MM			
	Current	Prior	Daily Change		Current	Prior	Daily Change
SEP 22	10798	14800	-4002	SEP 22	81931	81930	1
OCT 22	117318	118264	-946	OCT 22	81347	81935	-589
NOV 22	125438	125318	120	NOV 22	68707	67737	970
DEC 22	70176	69600	576	DEC 22	68146	67768	378
JAN 23	85023	84679	344	JAN 23	67598	67234	365
FEB 23	36923	37153	-230	FEB 23	62673	62464	210
MAR 23	59250	58968	282	MAR 23	55650	55223	428
APR 23	73197	72791	406	APR 23	57094	56836	259
MAY 23	75182	74107	1075	MAY 23	55794	55766	28
JUN 23	23646	23515	131	JUN 23	47242	47090	152
JUL 23	25189	25252	-63	JUL 23	46603	46447	156
AUG 23	18569	18629	-60	AUG 23	45520	45256	264
SEP 23	21076	20915	161	SEP 23	44499	44258	240
OCT 23	53070	52524	546	OCT 23	52109	52131	-22
NOV 23	14073	14015	58	NOV 23	45854	45736	118
DEC 23	12549	12523	26	DEC 23	41540	41431	108
JAN 24	19755	19573	182	JAN 24	40325	40442	-117
FEB 24	8039	8035	4	FEB 24	31409	31198	211
MAR 24	18162	18277	-115	MAR 24	35790	35786	4
APR 24	14357	14652	-295	APR 24	28642	28527	116
MAY 24	7240	7225	15	MAY 24	27586	27451	135
JUN 24	2733	2683	50	JUN 24	24753	24595	158
JUL 24	2499	2516	-17	JUL 24	24676	24513	163
AUG 24	3321	3320	1	AUG 24	24240	24077	163
SEP 24	2023	2008	15	SEP 24	24168	24011	158
OCT 24	8965	8947	18	OCT 24	27727	27534	193
NOV 24	4949	4953	-4	NOV 24	25321	25147	175
DEC 24	8092	8076	16	DEC 24	28612	28434	178
JAN 25	16617	16619	-2	JAN 25	21917	21845	72
FEB 25	987	986	1	FEB 25	14607	14509	98

Source: CME, ICE





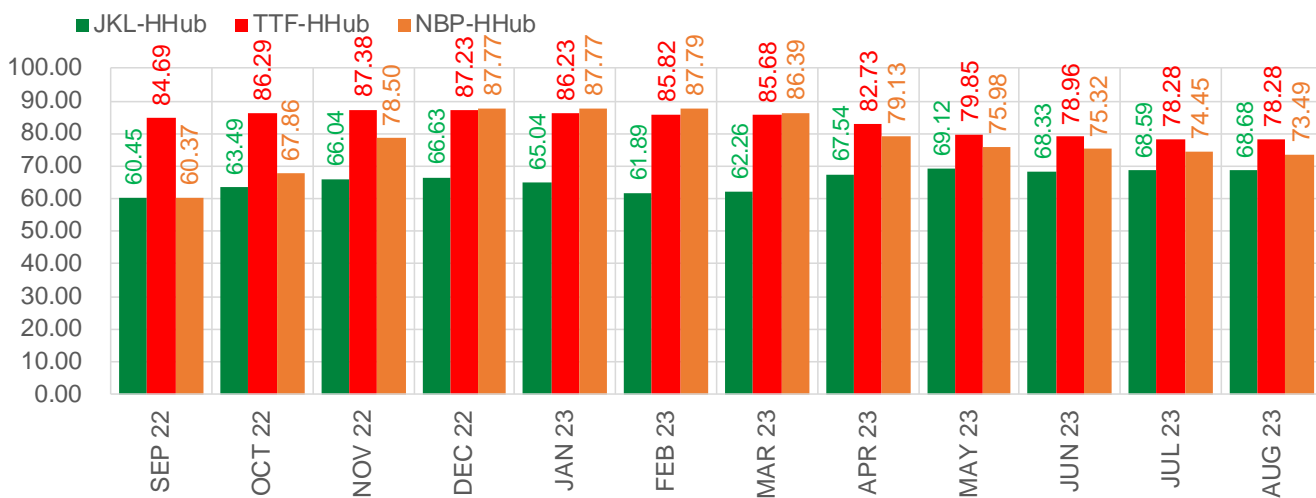
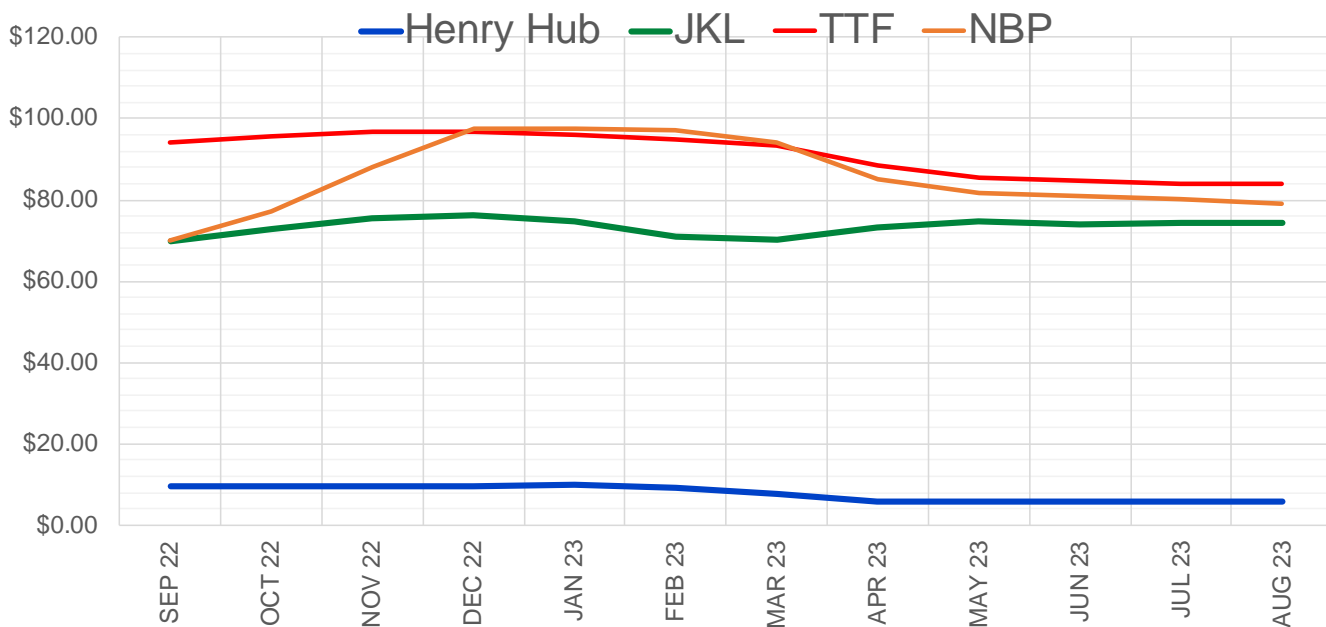
	Sep-22	Oct-22	Nov-22	Dec-22	Jan-23	Feb-23	Mar-23	Apr-23	May-23	Jun-23	Jul-23	Aug-23
Current Price	\$9.330	\$9.300	\$9.369	\$9.504	\$9.570	\$9.079	\$7.578	\$5.740	\$5.551	\$5.596	\$5.642	\$5.653
Last Week	\$9.244	\$9.228	\$9.297	\$9.401	\$9.465	\$8.951	\$7.448	\$5.593	\$5.416	\$5.463	\$5.512	\$5.524
vs. Last Week	\$0.086	\$0.072	\$0.072	\$0.103	\$0.105	\$0.128	\$0.130	\$0.147	\$0.135	\$0.133	\$0.130	\$0.129
4 Weeks Ago	\$8.687	\$8.554	\$8.526	\$8.603	\$8.695	\$8.760	\$8.302	\$6.892	\$5.099	\$4.920	\$4.968	\$5.020
vs. 4 Weeks Ago	\$0.643	\$0.746	\$0.843	\$0.901	\$0.875	\$0.319	-\$0.724	-\$1.152	\$0.452	\$0.676	\$0.674	\$0.633
Last Year	\$3.897	\$3.925	\$3.995	\$4.105	\$4.166	\$4.089	\$3.836	\$3.320	\$3.251	\$3.281	\$3.315	\$3.323
vs. Last Year	\$5.433	\$5.375	\$5.374	\$5.399	\$5.404	\$4.990	\$3.742	\$2.420	\$2.300	\$2.315	\$2.327	\$2.330

	Units	Cash Settled	Prompt Settle	Cash to Prompt
AGT Citygate	\$/MMBtu	8.83	8.51	-0.32
TETCO M3	\$/MMBtu	8.65	7.92	-0.73
FGT Zone 3	\$/MMBtu	8.65	9.97	1.32
Zone 6 NY	\$/MMBtu	8.65	7.90	-0.75
Chicago Citygate	\$/MMBtu	8.73	8.80	0.07
Michcon	\$/MMBtu	8.79	8.74	-0.05
Columbia TCO Pool	\$/MMBtu	8.21	8.01	-0.21
Ventura	\$/MMBtu	5.95	8.69	2.74
Rockies/Opal	\$/MMBtu	8.71	8.55	-0.16
El Paso Permian Basin	\$/MMBtu	8.11	7.80	-0.31
Socal Citygate	\$/MMBtu	9.94	9.82	-0.12
Malin	\$/MMBtu	8.45	8.75	0.30
Houston Ship Channel	\$/MMBtu	8.82	8.75	-0.07
Henry Hub Cash	\$/MMBtu	9.32	8.58	-0.74
AECO Cash	C\$/GJ	2.21	4.59	2.38
Station2 Cash	C\$/GJ	1.21	8.42	7.21
Dawn Cash	C\$/GJ	8.80	8.78	-0.02

Source: CME, Bloomberg

	Units	Current Price	vs. Last Week	vs. 4 Weeks Ago	vs. Last Year
NatGas Jul21/Oct21	\$/MMBtu	2.224	▲ 0.000	▲ 0.000	▲ 1.630
NatGas Oct21/Nov21	\$/MMBtu	0.361	▲ 0.000	▲ 0.000	▲ 0.311
NatGas Oct21/Jan22	\$/MMBtu	-1.817	▲ 0.000	▲ 0.000	▼ -2.025
NatGas Apr22/Oct22	\$/MMBtu	4.008	▲ 0.174	▲ 1.226	▲ 4.007
WTI Crude	\$/Bbl	92.52	▲ 2.020	▼ -3.900	▲ 25.100
Brent Crude	\$/Bbl	99.34	▲ 2.750	▼ -7.800	▲ 28.270
Fuel Oil, NY Harbour 1%	\$/Bbl	97.18	▲ 0.000	▲ 0.000	▲ 0.000
Heating Oil	cents/Gallon	394.91	▲ 29.940	▲ 26.280	▲ 186.590
Propane, Mt. Bel	cents/Gallon	1.09	▲ 0.005	▼ -0.052	▼ -0.018
Ethane, Mt. Bel	cents/Gallon	0.61	▲ 0.001	▲ 0.031	▲ 0.272
Coal, PRB	\$/MTon	12.30	▲ 0.000	▲ 0.000	▲ 0.000
Coal, PRB	\$/MMBtu	0.70			
Coal, ILB	\$/MTon	31.05	▲ 0.000	▲ 0.000	▲ 0.000
Coal, ILB	\$/MMBtu	1.32			

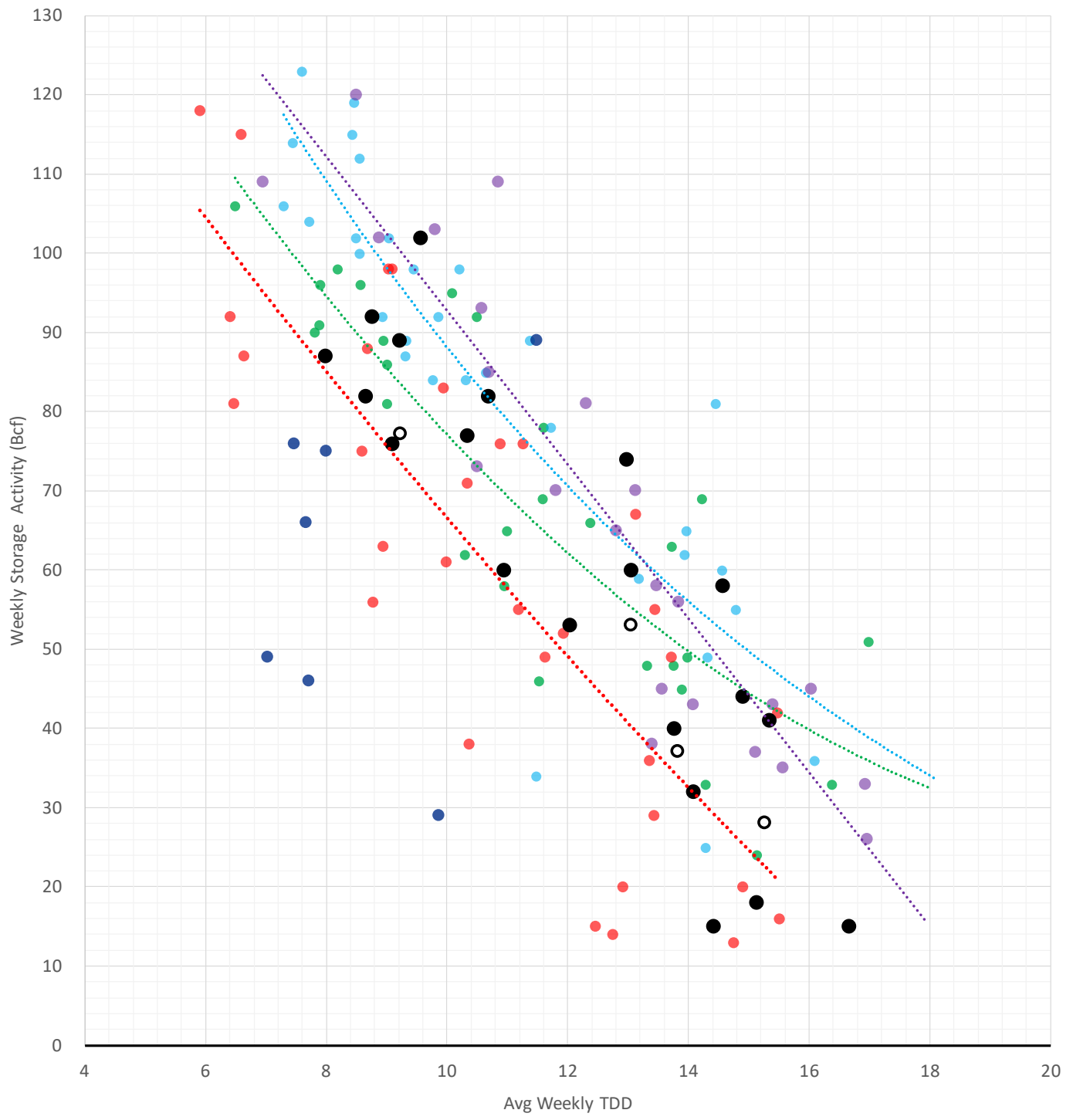
Nat Gas Term Structure (\$MMBTU)



	SEP 22	OCT 22	NOV 22	DEC 22	JAN 23	FEB 23	MAR 23	APR 23	MAY 23	JUN 23	JUL 23	AUG 23
Henry Hub	\$9.505	\$9.457	\$9.526	\$9.641	\$9.711	\$9.256	\$7.780	\$5.834	\$5.647	\$5.670	\$5.743	\$5.738
JKL	\$69.955	\$72.945	\$75.570	\$76.275	\$74.755	\$71.145	\$70.035	\$73.375	\$74.765	\$74.000	\$74.330	\$74.415
JKL-HHub	\$60.450	\$63.488	\$66.044	\$66.634	\$65.044	\$61.889	\$62.255	\$67.541	\$69.118	\$68.330	\$68.587	\$68.677
TTF	\$94.196	\$95.743	\$96.901	\$96.867	\$95.943	\$95.073	\$93.455	\$88.566	\$85.501	\$84.627	\$84.027	\$84.019
TTF-HHub	\$84.691	\$86.286	\$87.375	\$87.226	\$86.232	\$85.817	\$85.675	\$82.732	\$79.854	\$78.957	\$78.284	\$78.281
NBP	\$69.872	\$77.317	\$88.022	\$97.412	\$97.476	\$97.050	\$94.174	\$84.960	\$81.626	\$80.987	\$80.195	\$79.232
NBP-HHub	\$60.367	\$67.860	\$78.496	\$87.771	\$87.765	\$87.794	\$86.394	\$79.126	\$75.979	\$75.317	\$74.452	\$73.494

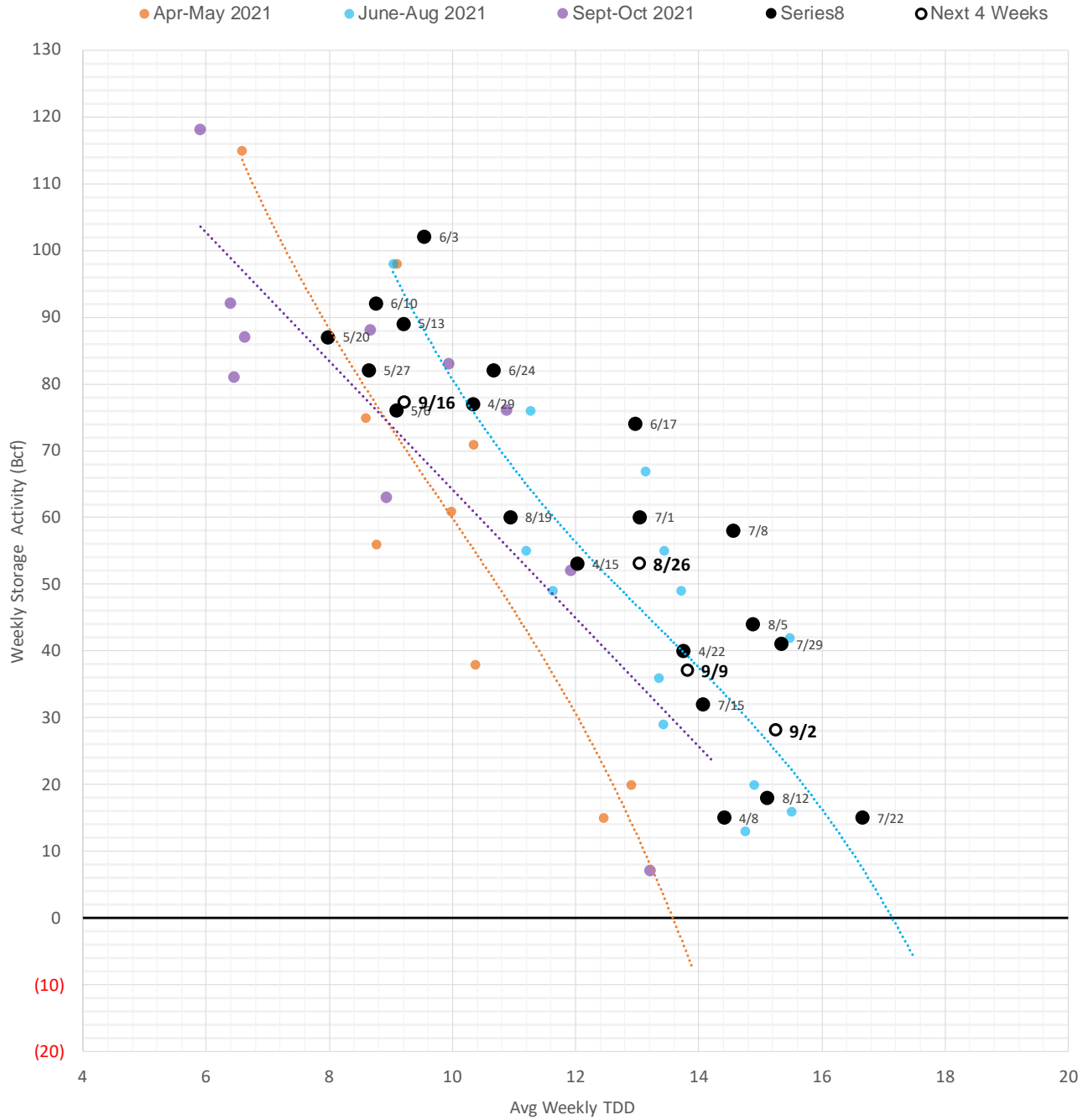
Weather Storage Model - Next 4 Week Forecast

● Summer 18 ● Summer 19 ● Summer 20 Apr-Aug ● Summer 20 Sept-Oct ● Summer 21 ● Summer 22 ○ Next 4 Weeks

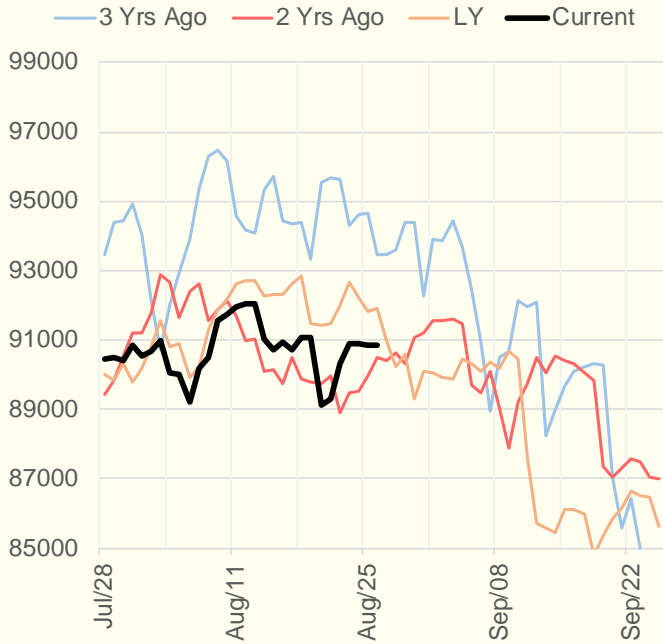


The risk of trading futures and options and other derivatives involves a substantial risk of loss and is not suitable for all persons. Each person must consider whether a particular trade, combination of trades, or strategy is suitable for that person's financial means and objectives. Past results are not necessarily indicative of future results. This communication may contain links to third party websites which are not under the control of and are not maintained by ION Energy Group, and ION Energy Group is not responsible for their content.

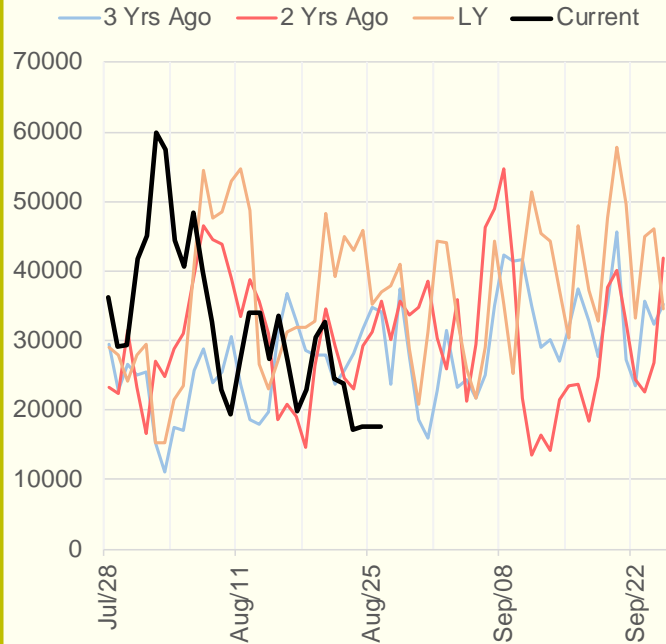
Weather Storage Model - Next 4 Week Forecast



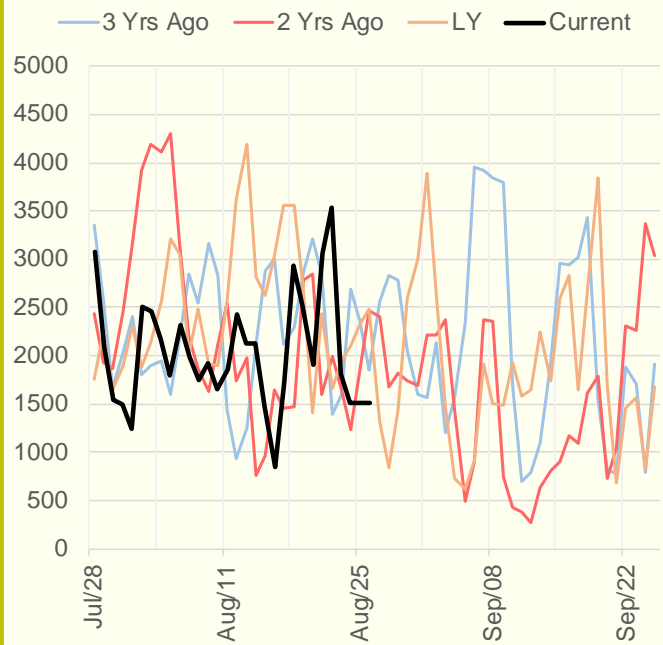
NRC Nuclear Daily Output



US Wind



CALI Wind



TEXAS Wind

