

	Current	Δ from YD	Δ from 7D Avg
Nat Gas Prompt	\$ 9.46 ▲	\$ 0.16 ▲	\$ 0.10

	Current	Δ from YD	Δ from 7D Avg
WTI Prompt	\$ 93.51 ▲	\$ 0.45 ▲	\$ 0.6

	Current	Δ from YD	Δ from 7D Avg
Brent Prompt	\$ 101.27 ▲	\$ 0.28 ▲	\$ 1.2

Page Menu

[Short-term Weather Model Outlooks](#)

[Lower 48 Component Models](#)

[Regional S/D Models Storage Projection](#)

[Weather Model Storage Projection](#)

[Supply – Demand Trends](#)

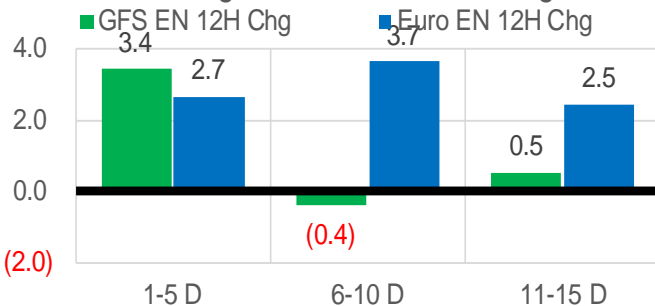
[Nat Gas Options Volume and Open Interest](#)

[Nat Gas Futures Open Interest](#)

[Price Summary](#)

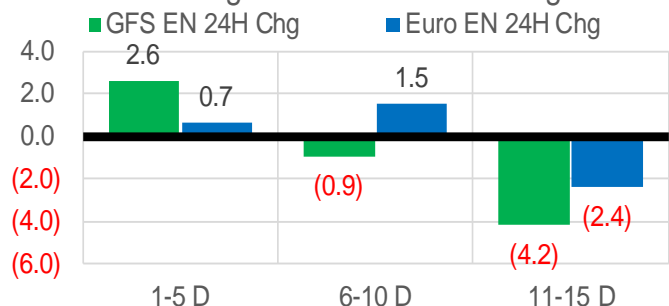
Vs. 12H Ago

L48 Region - 00z TDD vs 12H Ago



Vs. 24H Ago

L48 Region - 00z TDD vs 24H Ago



	Current	Δ from YD	Δ from 7D Avg
US Dry Production	98.9 ▼	-0.49 ▼	-0.10

	Current	Δ from YD	Δ from 7D Avg
US Power Burns	41.4 ▲	0.73 ▼	-0.61

	Current	Δ from YD	Δ from 7D Avg
US ResComm	7.9 ▲	0.13 ▼	-0.17

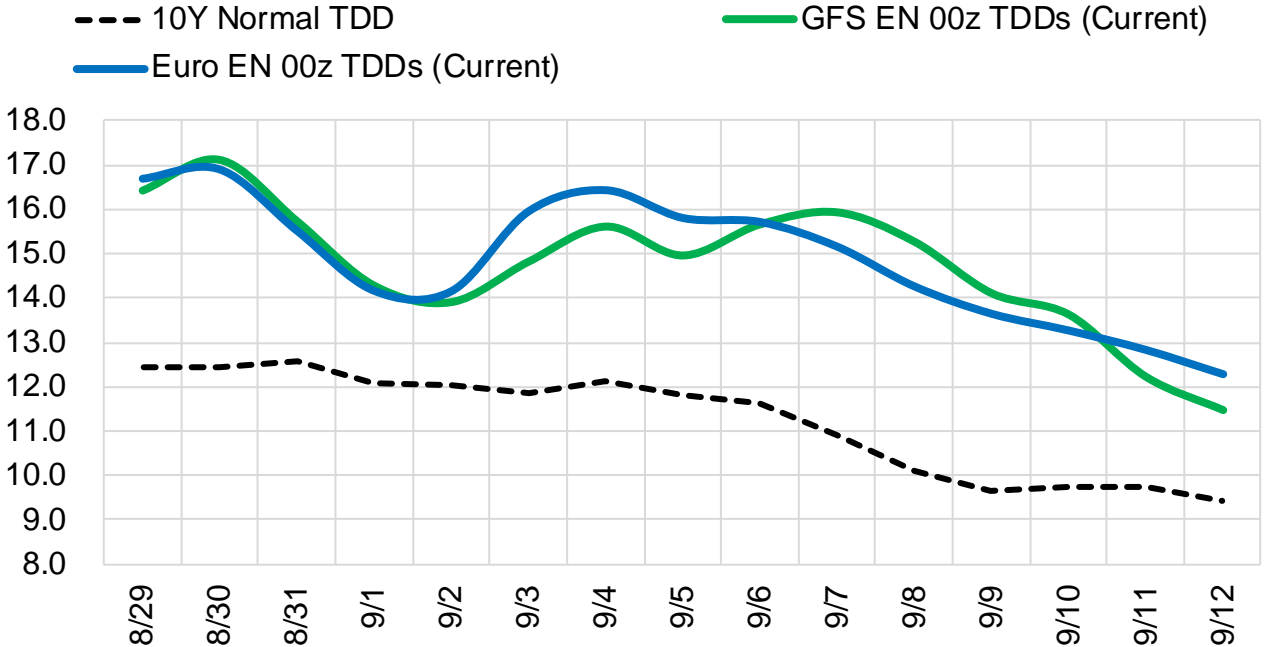
	Current	Δ from YD	Δ from 7D Avg
Canadian Imports	5.7 ▲	0.24 ▲	0.13

	Current	Δ from YD	Δ from 7D Avg
Net LNG Exports	10.4 ▼	-0.86 ▼	-0.79

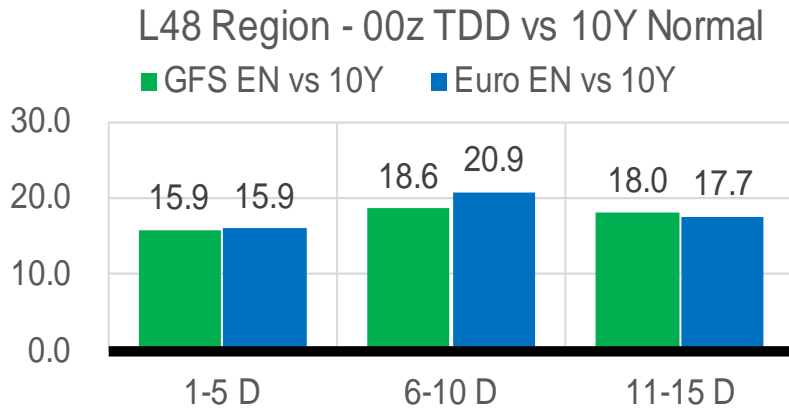
	Current	Δ from YD	Δ from 7D Avg
Mexican Exports	6.8 ▲	0.03 ▼	-0.10

Short-term Weather Model Outlooks (00z)

L48 Region



Vs. 10Y Normal



Source: WSI , Bloomberg

Lower 48 Component Models

Daily Balances

	23-Aug	24-Aug	25-Aug	26-Aug	27-Aug	28-Aug	29-Aug	DoD	vs. 7D
Lower 48 Dry Production	98.1	98.5	99.0	99.6	99.5	99.4	98.9	▼ -0.5	▼ -0.1
Canadian Imports	5.7	5.7	5.7	5.8	5.5	5.5	5.7	▲ 0.2	▲ 0.1
L48 Power	42.7	43.2	43.8	42.3	39.9	40.6	41.4	▲ 0.7	▼ -0.7
L48 Residential & Commercial	8.2	8.2	8.2	8.1	7.6	7.7	7.9	▲ 0.1	▼ -0.2
L48 Industrial	21.0	21.5	22.1	22.6	23.3	23.7	24.1	▲ 0.4	▲ 1.7
L48 Lease and Plant Fuel	5.3	5.4	5.4	5.4	5.4	5.4	5.4	▼ 0.0	▼ 0.0
L48 Pipeline Distribution	2.7	2.7	2.8	2.7	2.5	2.6	2.6	▲ 0.0	▼ 0.0
L48 Regional Gas Consumption	79.9	81.0	82.3	81.0	78.8	80.1	81.3	▲ 1.2	▲ 0.8
Net LNG Delivered	10.94	11.38	11.55	10.71	11.62	11.24	10.38	▼ -0.9	▼ -0.9
Total Mexican Exports	7.0	7.0	7.0	6.9	6.6	6.7	6.8	▲ 0.0	▼ -0.1
Implied Daily Storage Activity	6.0	4.9	3.8	6.7	8.0	6.9	6.2		
EIA Reported Daily Storage Activity									
Daily Model Error									

EIA Storage Week Balances

	22-Jul	29-Jul	5-Aug	12-Aug	19-Aug	26-Aug	WoW	vs. 4W
Lower 48 Dry Production	97.4	97.7	99.0	98.5	97.9	98.7	▲ 0.8	▲ 0.4
Canadian Imports	6.2	5.9	5.7	5.4	4.8	5.4	▲ 0.6	▼ 0.0
L48 Power	45.5	44.8	44.4	45.8	39.7	41.5	▲ 1.9	▼ -2.1
L48 Residential & Commercial	8.7	8.6	8.3	8.3	7.9	8.0	▲ 0.1	▼ -0.2
L48 Industrial	21.0	19.4	20.6	21.4	21.5	21.2	▼ -0.4	▲ 0.4
L48 Lease and Plant Fuel	5.3	5.3	5.4	5.4	5.3	5.4	▲ 0.0	▲ 0.0
L48 Pipeline Distribution	2.9	2.8	2.8	2.9	2.5	2.6	▲ 0.1	▼ -0.1
L48 Regional Gas Consumption	83.3	80.9	81.5	83.7	76.9	78.7	▲ 1.8	▼ -2.1
Net LNG Exports	10.8	10.7	10.9	10.9	10.9	11.1	▲ 0.2	▲ 0.3
Total Mexican Exports	7.1	6.9	6.9	7.0	6.9	6.8	▼ -0.1	▼ -0.1
Implied Daily Storage Activity	2.3	5.1	5.4	2.2	7.9	7.5	-0.5	
EIA Reported Daily Storage Activity	2.1	5.9	6.3	2.6	8.6			
Daily Model Error	0.2	-0.8	-0.9	-0.3	-0.6			

Monthly Balances

	2Yr Ago Aug-20	LY Aug-21	Apr-22	May-22	Jun-22	Jul-22	MTD Aug-22	MoM	vs. LY
Lower 48 Dry Production	88.9	93.9	95.1	96.0	97.1	97.4	98.6	▲ 1.2	▲ 4.7
Canadian Imports	4.9	5.1	5.8	5.1	5.7	5.9	5.3	▼ -0.6	▲ 0.2
L48 Power	41.0	40.4	25.1	29.7	36.8	43.4	42.7	▼ -0.8	▲ 2.3
L48 Residential & Commercial	7.7	7.9	22.3	12.4	9.0	8.5	8.1	▼ -0.4	▲ 0.2
L48 Industrial	20.8	21.0	20.1	19.8	20.6	20.3	21.5	▲ 1.2	▲ 0.5
L48 Lease and Plant Fuel	4.8	5.1	5.2	5.3	5.2	5.3	5.4	▲ 0.1	▲ 0.3
L48 Pipeline Distribution	2.5	2.6	2.6	2.4	2.5	2.8	2.7	▼ -0.1	▲ 0.1
L48 Regional Gas Consumption	76.9	77.0	75.3	69.6	74.2	80.2	80.3	▲ 0.1	▲ 3.3
Net LNG Exports	4.0	10.5	12.3	12.5	11.2	10.9	11.0	▲ 0.1	▲ 0.5
Total Mexican Exports	6.0	6.9	6.7	7.0	7.1	7.0	6.9	▼ -0.1	▲ 0.0
Implied Daily Storage Activity	6.8	4.7	6.6	12.0	10.3	5.2	5.7		
EIA Reported Daily Storage Activity									
Daily Model Error									

Source: Bloomberg, analytix.ai

Daily Average Generation Data

Nuclear Generation Daily Average - GWh (NRC)

	21-Aug	22-Aug	23-Aug	24-Aug	25-Aug	26-Aug	27-Aug	DoD	vs. 7D
NRC Nuclear Daily Output	89.3	90.3	90.9	90.9	90.9	91.0	91.0	0.0	0.5
NRC Nuclear Max Capacity	104.9	104.9	104.9	104.9	104.9	104.9	104.9	0.0	0.0
NRC Nuclear Outage	15.6	14.6	14.0	14.0	14.0	13.9	0.0	-13.9	-14.3
NRC % Nuclear Cap Utilization	90.8	91.8	92.4	92.4	92.4	92.5	92.5	0.0	0.5

Wind Generation Daily Average - MWh (EIA)

	21-Aug	22-Aug	23-Aug	24-Aug	25-Aug	26-Aug	27-Aug	DoD	vs. 7D
CALI Wind	3062	3535	1819	1516	1912	2283	2667	384	312
TEXAS Wind	7764	8295	3324	3215	2240	3799	9831	6032	5059
US Wind	24932	24171	17525	17752	16857	28825	50732	21908	29056

Generation Daily Average - MWh (EIA)

	21-Aug	22-Aug	23-Aug	24-Aug	25-Aug	26-Aug	27-Aug	DoD	vs. 7D
US Wind	24932	24171	17525	17752	16857	28825	50732	21908	29056
US Solar	15078	14990	16337	15824	15307	16799	17897	1098	2175
US Petroleum	1013	1008	1093	1042	1096	1025	1019	-7	-28
US Other	9431	10151	10328	10576	10453	10483	10405	-78	169
US Coal	108605	115603	117912	119486	119850	114606	104566	-10040	-11444
US Nuke	92047	93069	93332	93101	93476	93293	92962	-331	-91
US Hydro	26631	29950	30628	31357	32277	30692	25695	-4997	-4561
US Gas	206936	228009	234187	237532	242422	237256	206196	-31060	-24861

See National Wind and Nuclear daily charts

Source: Bloomberg, analytix.ai

Storage Week Average Generation Data

Nuclear Generation Weekly Average - GWh (NRC)

	22-Jul	29-Jul	5-Aug	12-Aug	19-Aug	26-Aug	WoW	WoW Bcf/d Impact
NRC Nuclear Daily Output	90.5	90.1	90.6	90.7	91.2	90.3	-0.9	0.2
NRC Nuclear Max Capacity	104.9	104.9	104.9	104.9	104.9	104.9	0.0	
NRC Nuclear Outage	14.4	14.8	14.3	14.1	13.7	14.5	0.9	
NRC % Nuclear Cap Utilization	92.0	91.6	92.1	92.3	92.8	91.9	-0.9	

Wind Generation Weekly Average - MWh (EIA)

	22-Jul	29-Jul	5-Aug	12-Aug	19-Aug	26-Aug	WoW	WoW Bcf/d Impact
CALI Wind	2470	3049	1933	1901	1953	2324	371	-0.1
TEXAS Wind	11182	14533	14443	8762	7139	5879	-1260	0.2
US Wind	40505	44003	43887	32976	28473	23568	-4905	0.9
							-17%	
							-0.2	

Generation Weekly Average - MWh (EIA)

	22-Jul	29-Jul	5-Aug	12-Aug	19-Aug	26-Aug	WoW	WoW Bcf/d Impact
						est.		
US Wind	40505	44003	43887	32976	28473	23568	-4905	0.9
US Solar	18727	18098	17577	17568	16951	15621	-1330	0.2
US Petroleum	1707	1465	1131	1737	1045	1047	1	0.0
US Other	10492	10690	10470	10725	9882	10185	303	-0.1
US Coal	121563	128742	122297	122575	112824	114385	1561	-0.3
US Nuke	92543	92281	92607	92966	94032	92872	-1160	0.2
US Hydro	33645	32210	31339	30400	30431	30471	41	0.0
US Gas	249151	238167	236187	252451	218061	226005	7944	1.4

See National Wind and Nuclear daily charts

Source: Bloomberg, analytix.ai

Monthly Average Generation Data

Nuclear Generation Monthly Average - GWh (NRC)

	2Yr Ago	LY	MTD						
	Same 30 days	Same 30 days	May-22	Jun-22	Jul-22	Aug-22	Last 30 days	MoM (MTD vs LY)	Last 30 days YoY
	NRC Nuclear Daily Output	90.8	91.6	81.7	88.5	90.6	90.8	90.8	0.2
NRC Nuclear Max Capacity	104.9	104.9	104.9	104.9	104.9	104.9	104.9	0.0	0.0
NRC Nuclear Outage	14.0	13.3	23.2	16.3	14.3	12.7	12.7	-1.6	-0.6
NRC % Nuclear Cap Utilization	92.4	93.1	83.0	90.0	92.1	92.3	92.3	0.2	-0.8

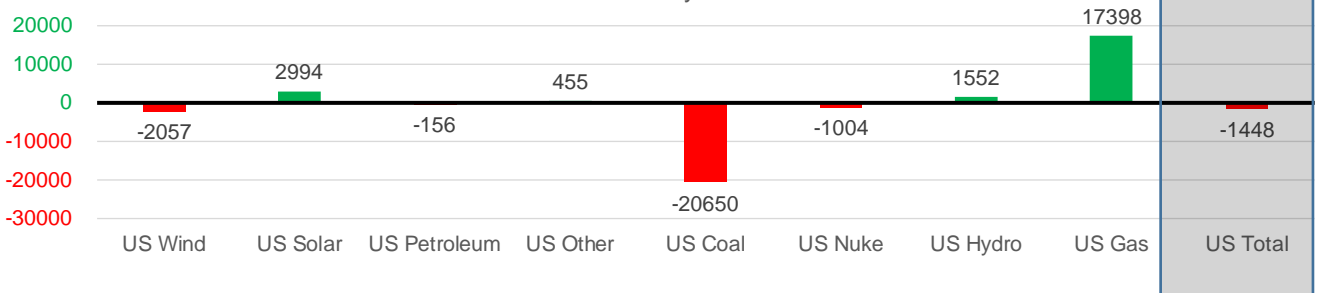
Wind Generation Monthly Average - MWh (EIA)

	2Yr Ago	LY	MTD						
	Same 30 days	Same 30 days	May-22	Jun-22	Jul-22	Aug-22	Last 30 days	MoM (MTD vs LY)	Last 30 days YoY
	CALI Wind	2268	2399	3361	2875	2719	2135	2114	-584
TEXAS Wind	8434	10147	16756	13441	11765	8635	8823	-3131	-1324
US Wind	30323	36218	56649	47161	39701	33897	34161	-5804	-2057

Generation Monthly Average - MWh (EIA)

	2Yr Ago	LY	MTD						
	Same 30 days	Same 30 days	May-22	Jun-22	Jul-22	Aug-22	Last 30 days	MoM (MTD vs LY)	Last 30 days YoY
	US Wind	30323	36218	56649	47161	39701	33897	34161	▲ 263.7
US Solar	10764	13949	18212	19386	18593	16953	16943	▼ -10.7	▲ 2994
US Petroleum	1162	1389	518	998	1252	1247	1233	▼ -14	▼ -156
US Other	9811	9867	7723	8530	9961	10333	10322	▼ -11	▲ 455
US Coal	123087	137183	85695	105186	119788	116677	116533	▼ -144	▼ -20650
US Nuke	93093	94147	85496	89904	92883	93154	93143	▼ -11	▼ -1004
US Hydro	29634	28548	31811	37522	34185	30119	30100	▼ -19	▲ 1552
US Gas	221696	213099	157670	199828	235788	231176	230496	▲ 55	▲ 17398
US Total	517323	534239	443970	508081	551806	533423	532790	▼ -154	▼ -1448

Last 30 days YoY



See National Wind and Nuclear daily charts

Source: Bloomberg, analytix.ai

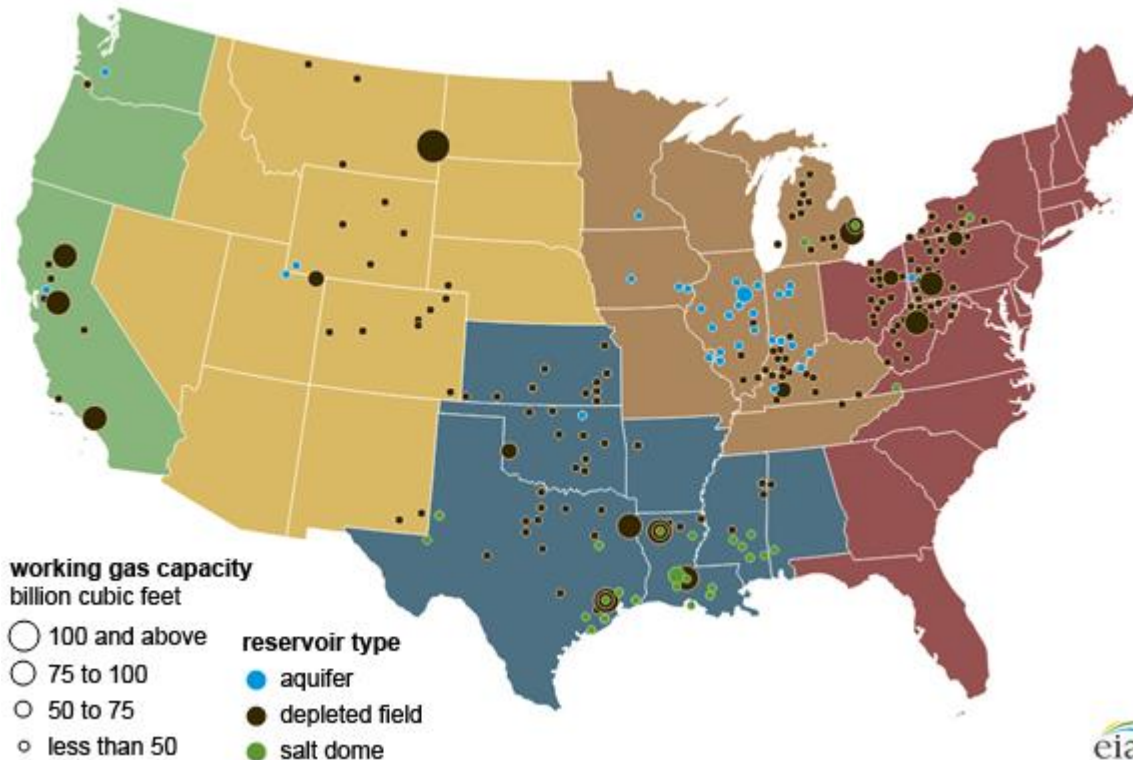
Regional S/D Models Storage Projection

Week Ending 26-Aug

	Daily Raw Storage	Daily Adjustment Factor	Daily Average Storage Activity (Adjusted) *	Weekly Adjusted Storage Activity
L48	8.2	-0.2	8.0	56
East	1.0	2.0	3.0	21
Midwest	4.7	-0.7	4.0	28
Mountain	4.6	-4.1	0.5	3
South Central	-2.3	3.1	0.9	6
Pacific	0.2	-0.5	-0.3	-2

*Adjustment Factor is calculated based on historical regional deltas

U.S. underground natural gas storage facilities by type (July 2015)

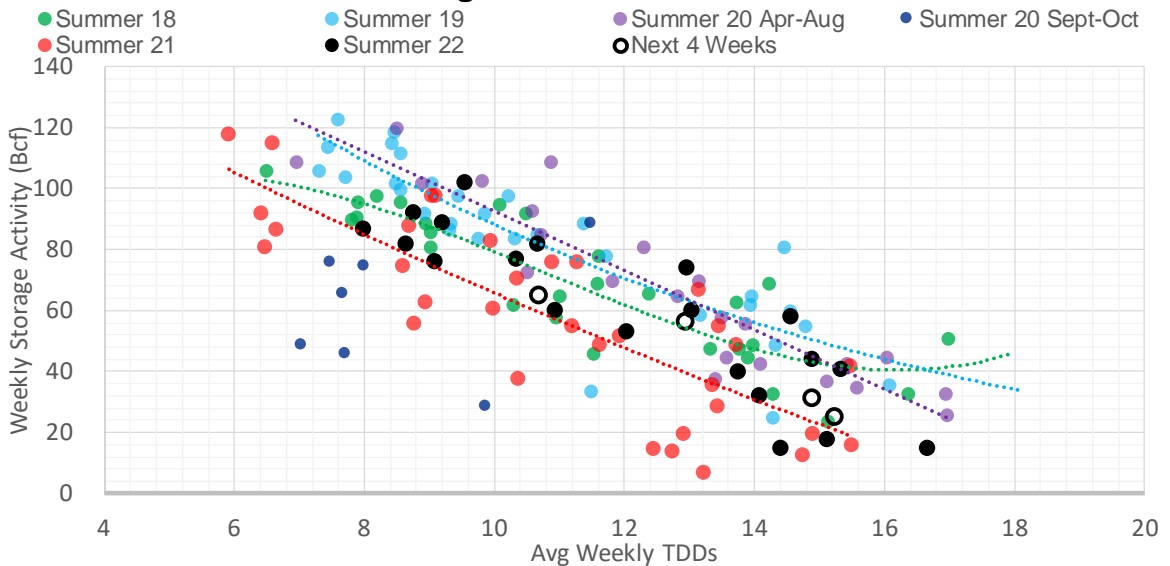


Weather Model Storage Projection

Next report
and beyond

Week Ending	GWDDs	Week Storage Projection
26-Aug	13.0	56
02-Sep	14.9	31
09-Sep	15.3	25
16-Sep	10.7	65

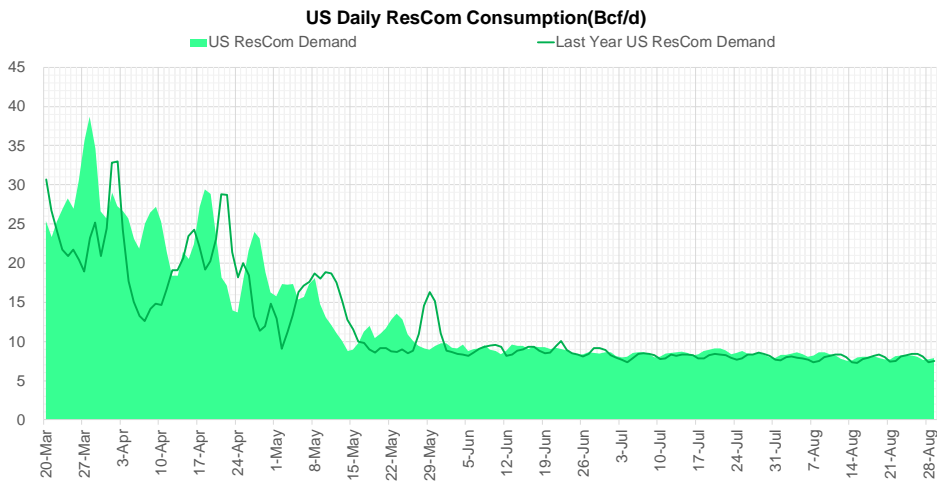
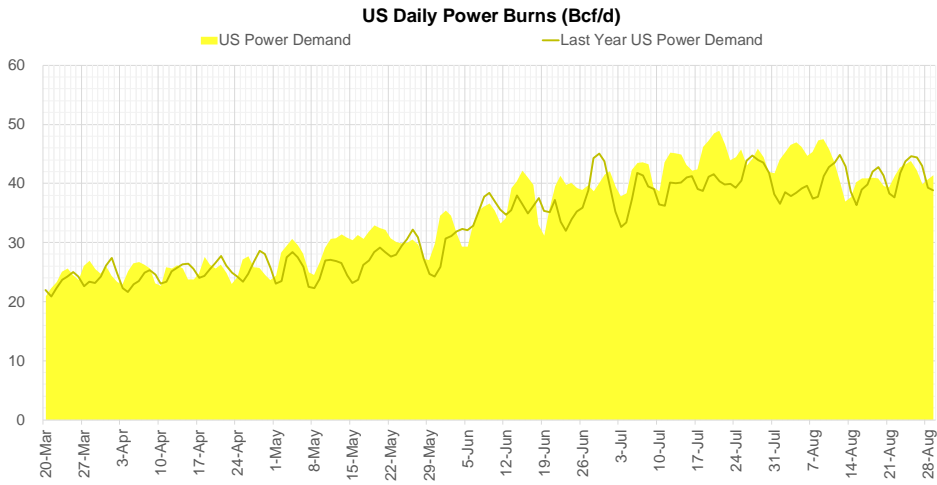
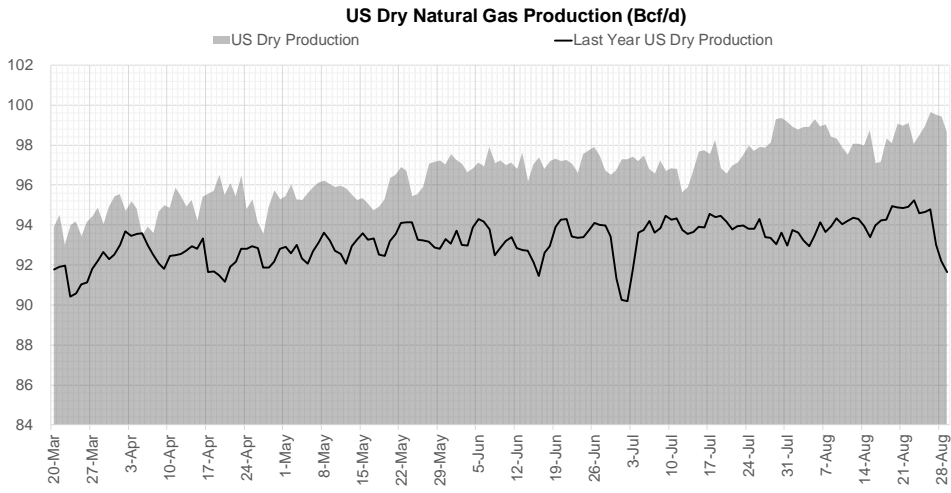
Weather Storage Model - Next 4 Week Forecast



[Go to larger image](#)



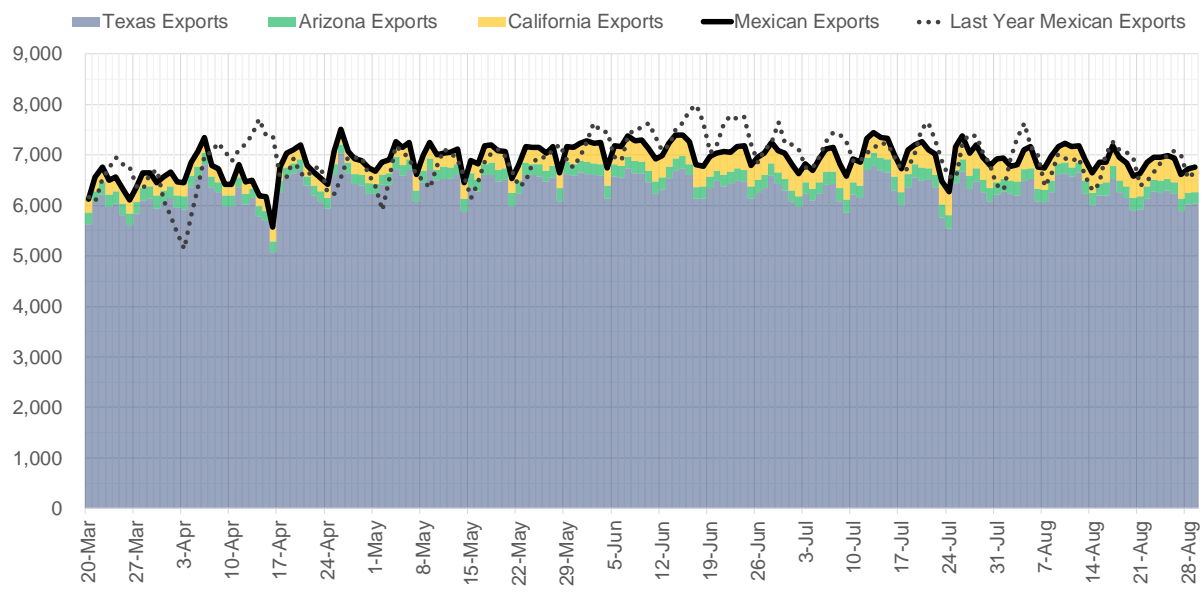
Supply – Demand Trends



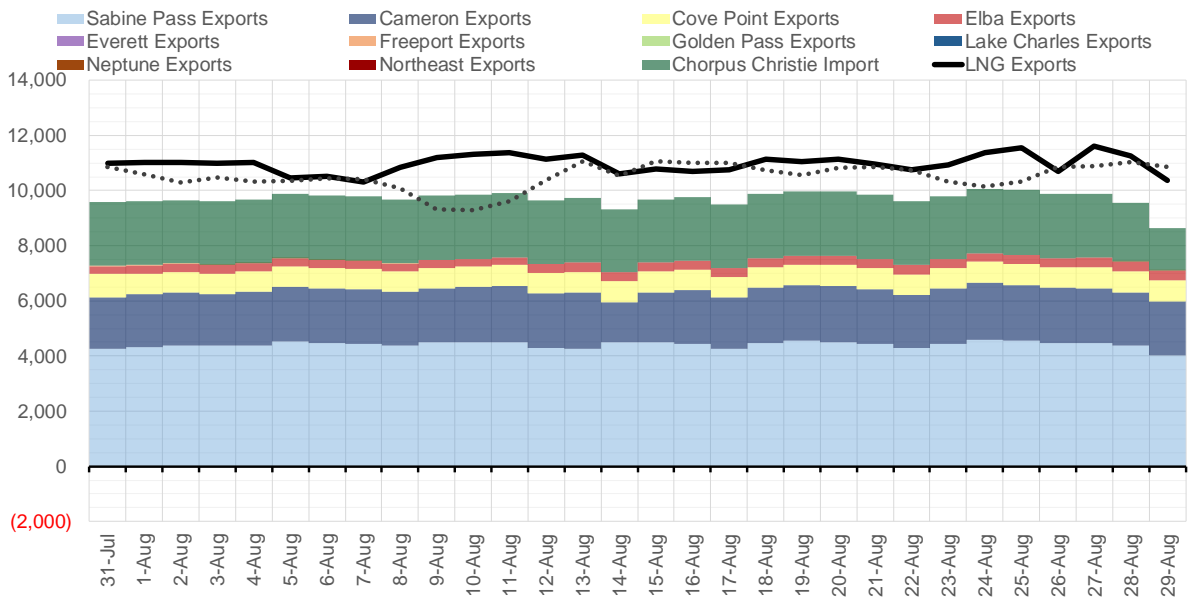
Source: Bloomberg

The risk of trading futures and options and other derivatives involves a substantial risk of loss and is not suitable for all persons. Each person must consider whether a particular trade, combination of trades, or strategy is suitable for that person's financial means and objectives. Past results are not necessarily indicative of future results. This communication may contain links to third party websites which are not under the control of and are not maintained by ION Energy Group, and ION Energy Group is not responsible for their content.

Mexican Exports (MMcf/d)



Net LNG Exports - Last 30 days (MMcf/d)



Source: Bloomberg

The risk of trading futures and options and other derivatives involves a substantial risk of loss and is not suitable for all persons. Each person must consider whether a particular trade, combination of trades, or strategy is suitable for that person's financial means and objectives. Past results are not necessarily indicative of future results. This communication may contain links to third party websites which are not under the control of and are not maintained by ION Energy Group, and ION Energy Group is not responsible for their content.

Nat Gas Options Volume and Open Interest CME and ICE Combined

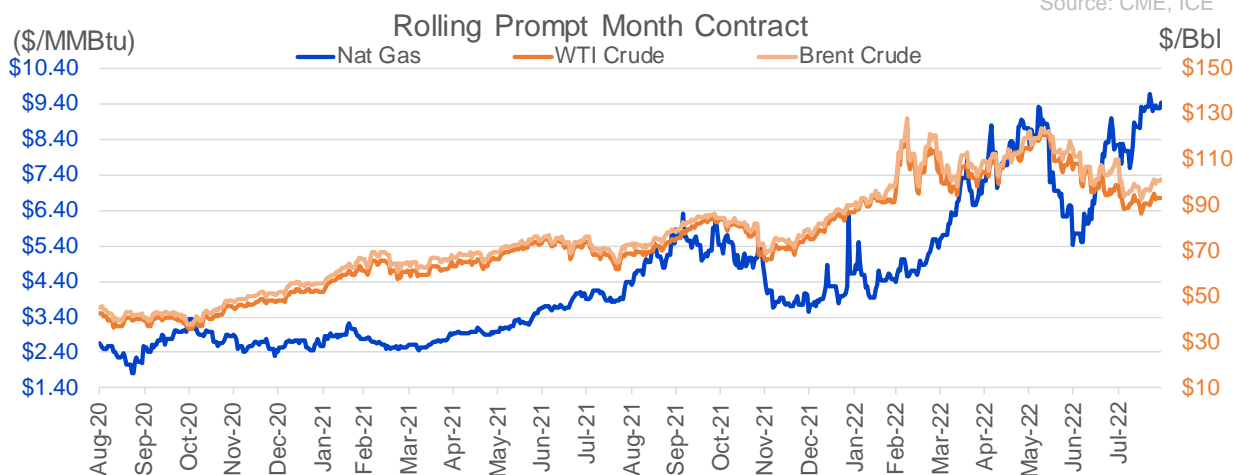
CONTRACT MONTH	CONTRACT YEAR	PUT/CALL	STRIKE	CUMULATIVE VOL	CONTRACT MONTH	CONTRACT YEAR	PUT/CALL	STRIKE	CUMULATIVE OI
10	2022	P	7.50	4535	10	2022	P	3.00	36672
10	2022	P	6.00	4077	10	2022	C	6.00	36011
10	2022	P	7.40	4000	10	2022	P	6.00	35689
10	2022	P	7.00	3432	10	2022	P	5.00	31741
12	2022	P	5.00	3427	10	2022	P	2.50	28111
11	2022	P	6.00	3297	9	2022	C	6.00	24363
11	2022	P	5.50	3047	10	2022	C	5.00	23273
10	2022	C	10.00	2305	10	2022	P	3.50	22248
12	2022	P	6.00	2210	3	2023	C	10.00	22003
10	2022	C	15.00	2170	10	2022	C	10.00	21745
10	2022	P	5.00	2055	10	2022	C	12.00	21498
12	2022	P	4.00	2005	10	2022	P	4.00	21459
10	2022	C	12.00	2000	5	2023	P	2.00	21197
9	2022	C	9.50	1979	12	2022	P	5.00	20826
9	2022	C	10.00	1914	9	2022	P	6.00	20520
12	2022	P	7.00	1600	9	2022	P	4.00	20463
1	2023	C	10.00	1501	11	2022	P	4.00	20371
2	2023	C	20.00	1501	9	2022	C	10.00	20046
11	2022	P	7.00	1304	9	2022	C	7.00	19521
9	2022	P	9.00	1229	12	2022	C	5.00	18218
10	2022	C	12.50	1227	3	2023	P	3.00	18152
2	2023	C	22.00	1200	10	2023	P	2.50	17350
10	2022	C	11.50	1101	4	2023	P	3.00	17059
10	2022	P	8.00	1085	10	2022	C	8.00	16976
9	2022	P	9.50	1028	10	2022	P	5.50	16825
11	2022	C	12.00	1001	10	2022	P	2.00	16759
10	2022	C	10.60	1000	9	2022	P	3.00	16612
10	2022	C	10.65	1000	2	2023	C	10.00	16253
2	2023	C	8.00	1000	10	2023	P	3.00	15978
2	2023	C	9.00	1000	9	2022	C	4.00	15969
10	2022	C	17.00	982	1	2023	C	10.00	15769
10	2022	C	10.50	877	3	2023	C	20.00	15562
10	2022	P	9.00	866	10	2023	P	2.00	15480
11	2022	P	5.00	857	9	2022	P	2.50	15478
4	2023	C	10.00	851	10	2022	P	3.25	15350
5	2023	C	10.00	851	9	2022	C	9.00	15338
6	2023	C	10.00	850	9	2022	P	7.00	15288
10	2022	C	11.00	805	10	2022	C	7.00	15090
10	2022	P	5.75	750	11	2022	C	12.00	14995
11	2022	P	8.50	750	9	2022	P	2.75	14887
1	2023	C	9.75	750	2	2023	C	9.00	14644
1	2023	C	10.25	750	9	2022	P	5.00	14472
9	2022	P	9.30	733	11	2022	P	6.00	14454
1	2023	P	4.00	725	9	2022	C	12.00	14428
12	2022	C	11.00	701	1	2023	P	5.00	14308
10	2022	C	13.00	669	6	2023	P	3.00	14085
10	2022	P	6.50	658	9	2022	C	9.50	14066
10	2022	P	4.00	657	9	2022	P	3.50	14015
9	2022	C	9.75	646	11	2022	C	10.00	13998
					5	2023	P	3	13988

Source: CME, ICE

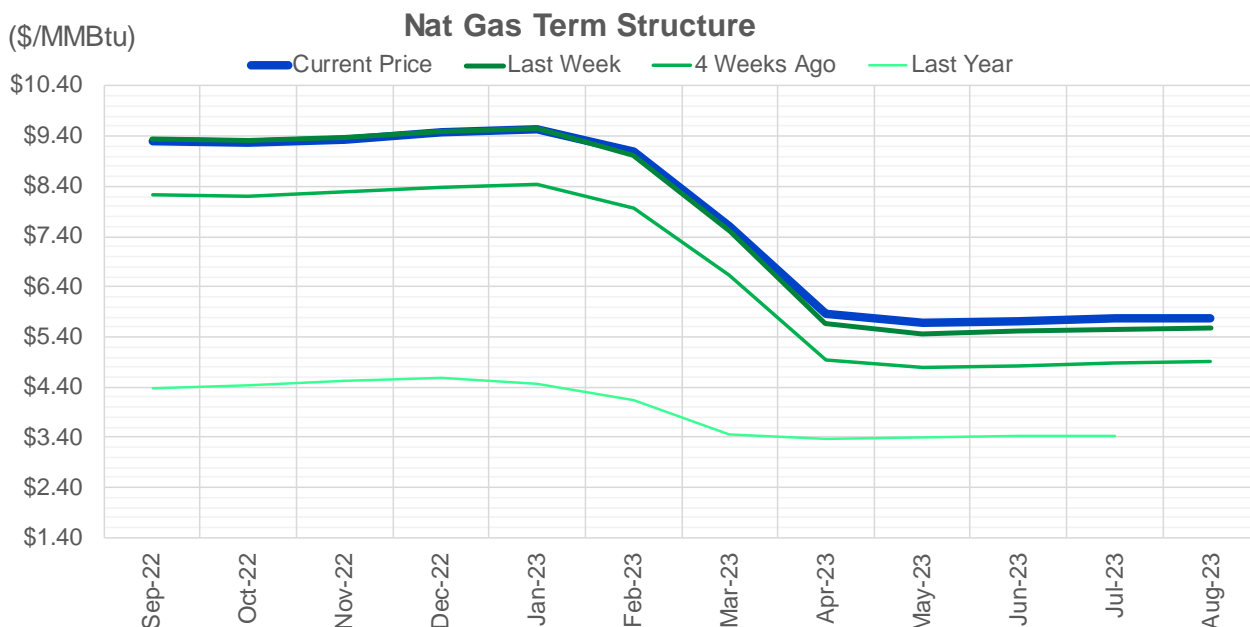
Nat Gas Futures Open Interest CME and ICE Combined

CME Henry Hub Futures (10,000 MMBtu)				ICE Henry Hub Futures Contract Equivalent (10,000 MM			
	Current	Prior	Daily Change		Current	Prior	Daily Change
SEP 22	1186	10794	-9608	SEP 22	81242	81931	-689
OCT 22	119164	117315	1849	OCT 22	79808	81347	-1539
NOV 22	128042	125438	2604	NOV 22	69701	68707	995
DEC 22	70936	70189	747	DEC 22	68764	68146	619
JAN 23	85654	85023	631	JAN 23	67747	67598	148
FEB 23	37185	36923	262	FEB 23	62732	62673	59
MAR 23	59127	59250	-123	MAR 23	55402	55650	-248
APR 23	72238	73197	-959	APR 23	57202	57094	108
MAY 23	75279	75182	97	MAY 23	55851	55794	57
JUN 23	23759	23649	110	JUN 23	47285	47242	43
JUL 23	25144	25189	-45	JUL 23	46760	46603	157
AUG 23	18527	18569	-42	AUG 23	45584	45520	64
SEP 23	21339	21076	263	SEP 23	44540	44499	41
OCT 23	53032	53070	-38	OCT 23	52252	52109	143
NOV 23	14099	14073	26	NOV 23	45849	45854	-5
DEC 23	12555	12578	-23	DEC 23	41636	41540	96
JAN 24	19629	19755	-126	JAN 24	40328	40325	3
FEB 24	8108	8039	69	FEB 24	30906	31409	-502
MAR 24	17986	18162	-176	MAR 24	35813	35790	23
APR 24	14416	14357	59	APR 24	28682	28642	39
MAY 24	7283	7240	43	MAY 24	27626	27586	40
JUN 24	2814	2733	81	JUN 24	24827	24753	74
JUL 24	2553	2499	54	JUL 24	24726	24676	50
AUG 24	3346	3321	25	AUG 24	24316	24240	76
SEP 24	2055	2023	32	SEP 24	24242	24168	74
OCT 24	9002	8965	37	OCT 24	27742	27727	16
NOV 24	4947	4949	-2	NOV 24	25365	25321	44
DEC 24	8092	8092	0	DEC 24	28659	28612	46
JAN 25	16617	16617	0	JAN 25	21904	21917	-14
FEB 25	976	987	-11	FEB 25	14627	14607	20

Source: CME, ICE



The risk of trading futures and options and other derivatives involves a substantial risk of loss and is not suitable for all persons. Each person must consider whether a particular trade, combination of trades, or strategy is suitable for that person's financial means and objectives. Past results are not necessarily indicative of future results. This communication may contain links to third party websites which are not under the control of and are not maintained by ION Energy Group, and ION Energy Group is not responsible for their content.



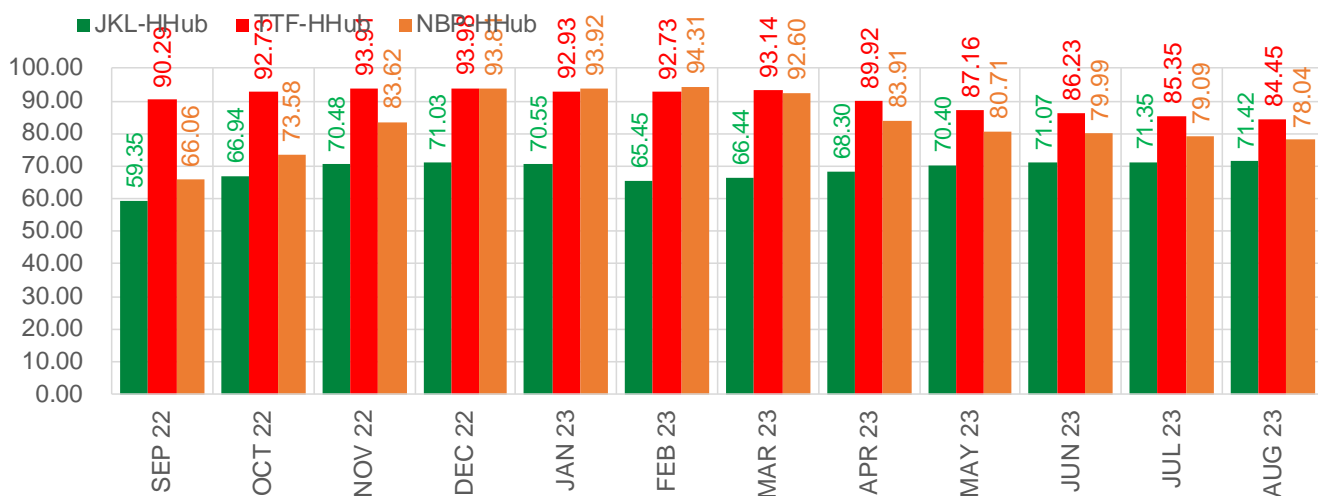
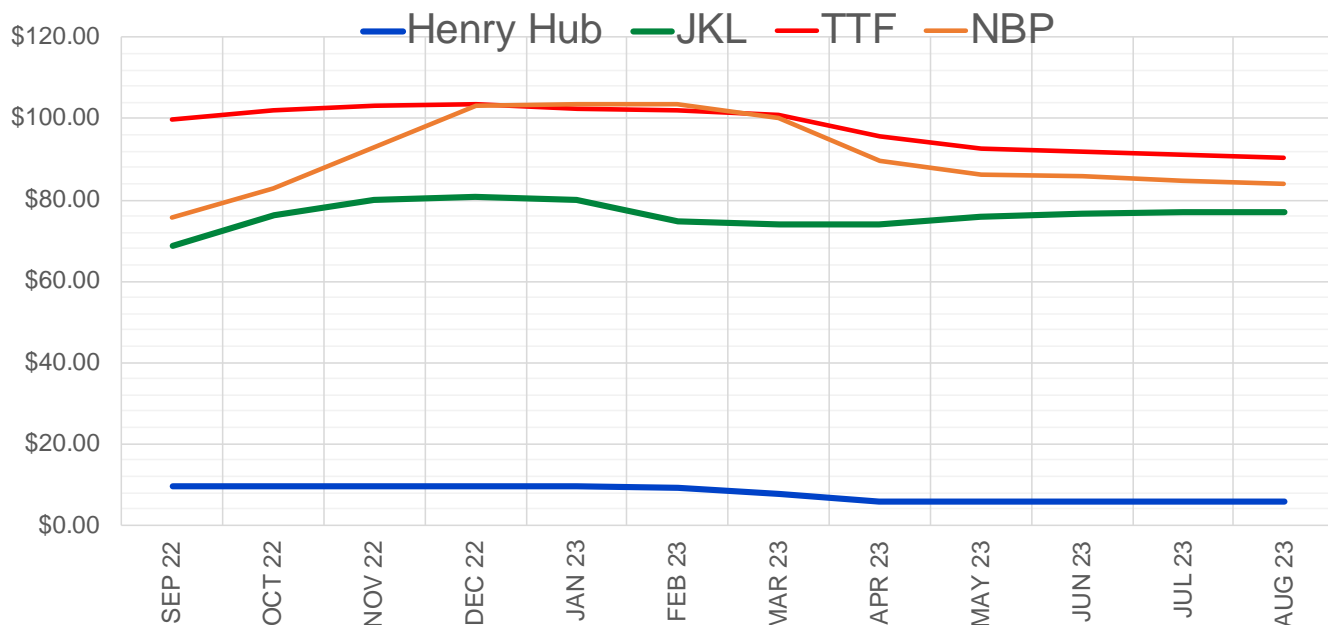
	Sep-22	Oct-22	Nov-22	Dec-22	Jan-23	Feb-23	Mar-23	Apr-23	May-23	Jun-23	Jul-23	Aug-23
Current Price	\$9.296	\$9.269	\$9.332	\$9.473	\$9.539	\$9.092	\$7.617	\$5.848	\$5.669	\$5.718	\$5.766	\$5.778
Last Week	\$9.336	\$9.315	\$9.385	\$9.492	\$9.552	\$9.030	\$7.496	\$5.656	\$5.462	\$5.508	\$5.555	\$5.567
vs. Last Week	-\$0.040	-\$0.046	-\$0.053	-\$0.019	-\$0.013	\$0.062	\$0.121	\$0.192	\$0.207	\$0.210	\$0.211	\$0.211
4 Weeks Ago	\$8.229	\$8.208	\$8.283	\$8.374	\$8.441	\$7.973	\$6.636	\$4.943	\$4.780	\$4.830	\$4.887	\$4.897
vs. 4 Weeks Ago	\$1.067	\$1.061	\$1.049	\$1.099	\$1.098	\$1.119	\$0.981	\$0.905	\$0.889	\$0.888	\$0.879	\$0.881
Last Year	\$4.370	\$4.388	\$4.434	\$4.522	\$4.574	\$4.480	\$4.140	\$3.472	\$3.379	\$3.405	\$3.436	\$3.443
vs. Last Year	\$4.926	\$4.881	\$4.898	\$4.951	\$4.965	\$4.612	\$3.477	\$2.376	\$2.290	\$2.313	\$2.330	\$2.335

	Units	Cash Settled	Prompt Settle	Cash to Prompt
AGT Citygate	\$/MMBtu	8.83	8.63	-0.21
TETCO M3	\$/MMBtu	8.70	8.01	-0.69
FGT Zone 3	\$/MMBtu	8.81	10.04	1.23
Zone 6 NY	\$/MMBtu	8.81	8.01	-0.80
Chicago Citygate	\$/MMBtu	8.72	8.83	0.11
Michcon	\$/MMBtu	8.87	8.76	-0.11
Columbia TCO Pool	\$/MMBtu	8.23	8.08	-0.14
Ventura	\$/MMBtu	5.95	8.73	2.78
Rockies/Opal	\$/MMBtu	8.68	8.60	-0.08
El Paso Permian Basin	\$/MMBtu	8.10	7.88	-0.22
Socal Citygate	\$/MMBtu	9.00	9.94	0.94
Malin	\$/MMBtu	8.45	8.78	0.33
Houston Ship Channel	\$/MMBtu	8.72	8.82	0.10
Henry Hub Cash	\$/MMBtu	9.48	8.62	-0.86
AECO Cash	C\$/GJ	2.60	4.68	2.08
Station2 Cash	C\$/GJ	1.51	8.47	6.96
Dawn Cash	C\$/GJ	8.82	8.79	-0.03

Source: CME, Bloomberg

	Units	Current Price	vs. Last Week	vs. 4 Weeks Ago	vs. Last Year
NatGas Jul21/Oct21	\$/MMBtu	2.224	▲ 0.000	▲ 0.000	▲ 1.453
NatGas Oct21/Nov21	\$/MMBtu	0.361	▲ 0.000	▲ 0.000	▲ 0.315
NatGas Oct21/Jan22	\$/MMBtu	-1.817	▲ 0.000	▲ 0.000	▼ -2.003
NatGas Apr22/Oct22	\$/MMBtu	3.933	▼ -0.046	▲ 1.061	▲ 3.946
WTI Crude	\$/Bbl	93.06	▲ 2.290	▼ -5.560	▲ 24.320
Brent Crude	\$/Bbl	100.99	▲ 4.270	▼ -9.020	▲ 28.290
Fuel Oil, NY Harbour 1%	\$/Bbl	97.18	▲ 0.000	▲ 0.000	▲ 0.000
Heating Oil	cents/Gallon	400.76	▲ 30.710	▲ 38.290	▲ 189.840
Propane, Mt. Bel	cents/Gallon	1.09	▲ 0.004	▼ -0.053	▼ -0.020
Ethane, Mt. Bel	cents/Gallon	0.60	▼ -0.002	▲ 0.030	▲ 0.269
Coal, PRB	\$/MTon	12.30	▲ 0.000	▲ 0.000	▲ 0.000
Coal, PRB	\$/MMBtu	0.70			
Coal, ILB	\$/MTon	31.05	▲ 0.000	▲ 0.000	▲ 0.000
Coal, ILB	\$/MMBtu	1.32			

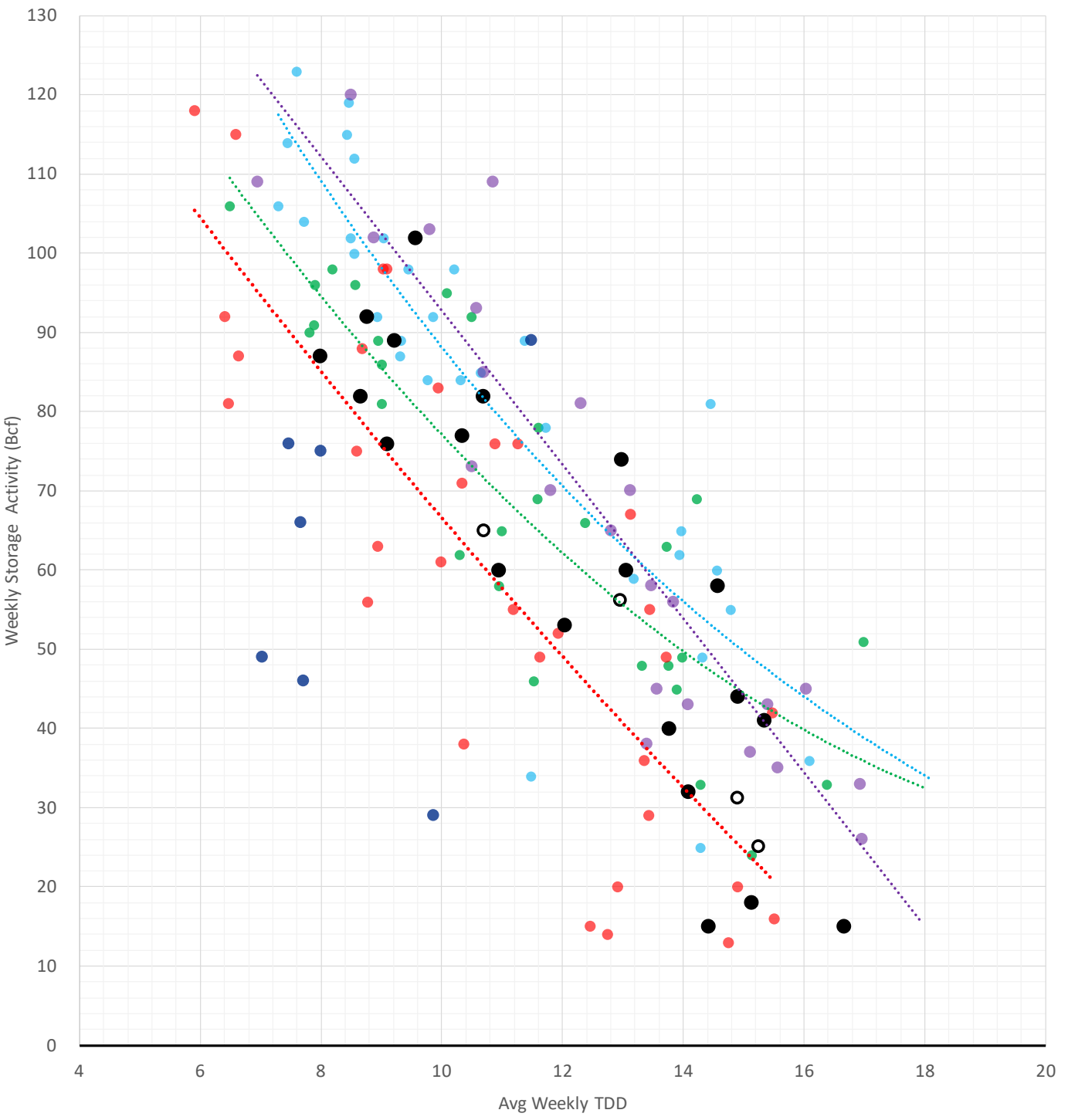
Nat Gas Term Structure (\$MMBTU)



	SEP 22	OCT 22	NOV 22	DEC 22	JAN 23	FEB 23	MAR 23	APR 23	MAY 23	JUN 23	JUL 23	AUG 23
Henry Hub	\$9.455	\$9.377	\$9.429	\$9.567	\$9.632	\$9.215	\$7.680	\$5.853	\$5.651	\$5.711	\$5.761	\$5.774
JKL	\$68.800	\$76.320	\$79.910	\$80.595	\$80.185	\$74.665	\$74.120	\$74.150	\$76.055	\$76.785	\$77.110	\$77.190
JKL-HHub	\$59.345	\$66.943	\$70.481	\$71.028	\$70.553	\$65.450	\$66.440	\$68.297	\$70.404	\$71.074	\$71.349	\$71.416
TTF	\$99.741	\$102.109	\$103.337	\$103.545	\$102.564	\$101.944	\$100.821	\$95.773	\$92.810	\$91.936	\$91.111	\$90.220
TTF-HHub	\$90.286	\$92.732	\$93.908	\$93.978	\$92.932	\$92.729	\$93.141	\$89.920	\$87.159	\$86.225	\$85.350	\$84.446
NBP	\$75.516	\$82.954	\$93.046	\$103.375	\$103.553	\$103.521	\$100.284	\$89.761	\$86.357	\$85.705	\$84.847	\$83.815
NBP-HHub	\$66.061	\$73.577	\$83.617	\$93.808	\$93.921	\$94.306	\$92.604	\$83.908	\$80.706	\$79.994	\$79.086	\$78.041

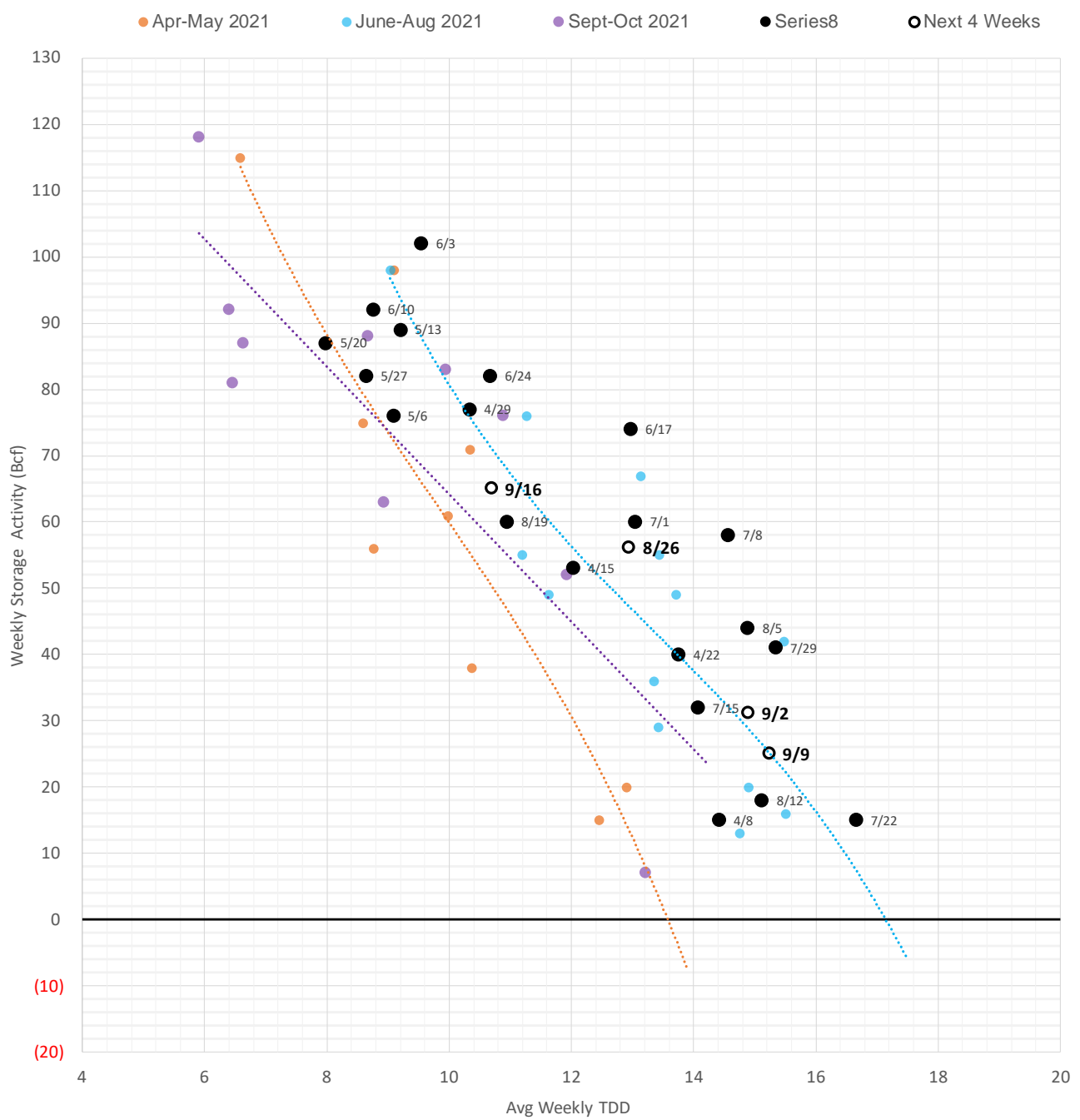
Weather Storage Model - Next 4 Week Forecast

● Summer 18 ● Summer 19 ● Summer 20 Apr-Aug ● Summer 20 Sept-Oct ● Summer 21 ● Summer 22 ○ Next 4 Weeks



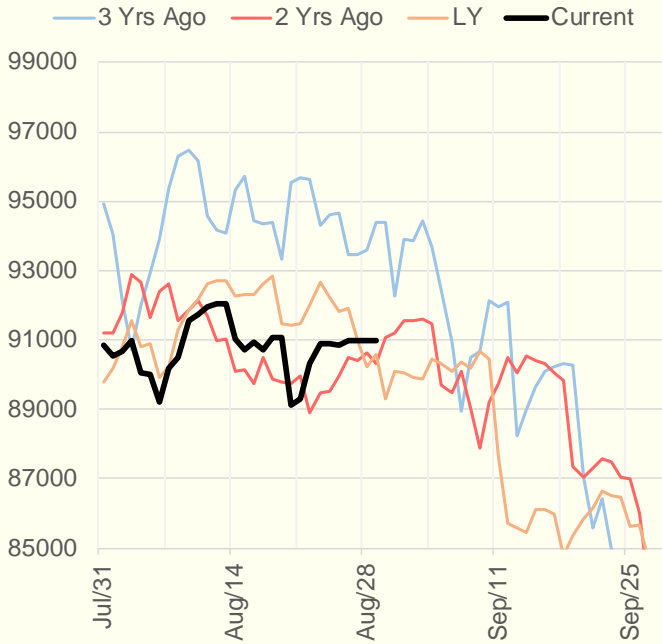
The risk of trading futures and options and other derivatives involves a substantial risk of loss and is not suitable for all persons. Each person must consider whether a particular trade, combination of trades, or strategy is suitable for that person's financial means and objectives. Past results are not necessarily indicative of future results. This communication may contain links to third party websites which are not under the control of and are not maintained by ION Energy Group, and ION Energy Group is not responsible for their content.

Weather Storage Model - Next 4 Week Forecast

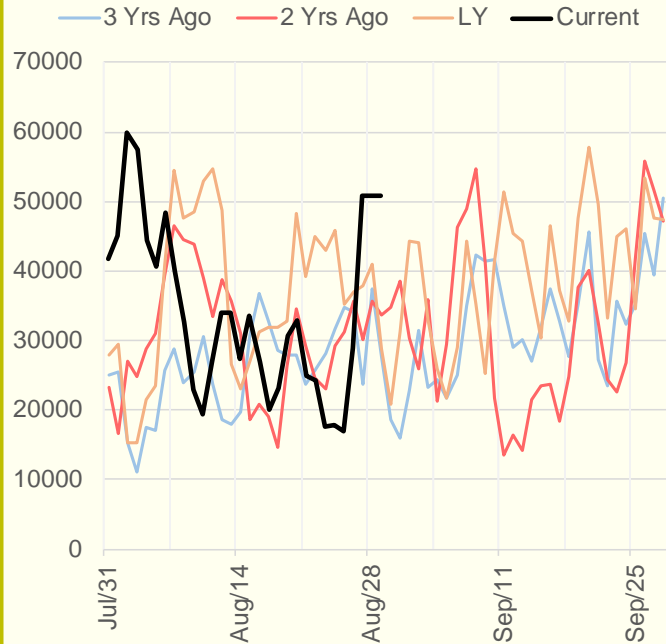


The risk of trading futures and options and other derivatives involves a substantial risk of loss and is not suitable for all persons. Each person must consider whether a particular trade, combination of trades, or strategy is suitable for that person's financial means and objectives. Past results are not necessarily indicative of future results. This communication may contain links to third party websites which are not under the control of and are not maintained by ION Energy Group, and ION Energy Group is not responsible for their content.

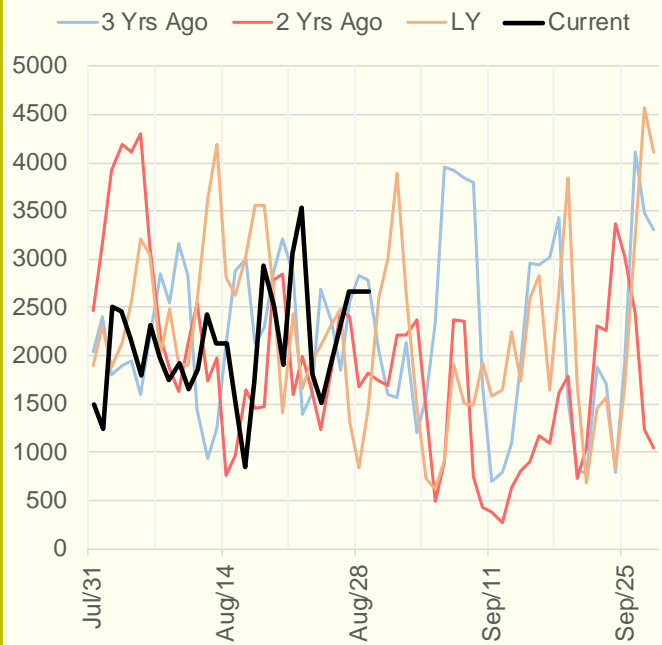
NRC Nuclear Daily Output



US Wind



CALI Wind



TEXAS Wind

