

	Current	Δ from YD	Δ from 7D Avg
Nat Gas Prompt	\$ 9.14	▼ \$ (0.21)	▼ \$ (0.17)

	Current	Δ from YD	Δ from 7D Avg
WTI Prompt	\$ 93.88	▼ \$ (3.13)	▼ \$ (0.0)

	Current	Δ from YD	Δ from 7D Avg
Brent Prompt	\$ 101.12	▼ \$ (3.97)	▼ \$ (0.1)

Page Menu

[Short-term Weather Model Outlooks](#)

[Lower 48 Component Models](#)

[Regional S/D Models Storage Projection](#)

[Weather Model Storage Projection](#)

[Supply – Demand Trends](#)

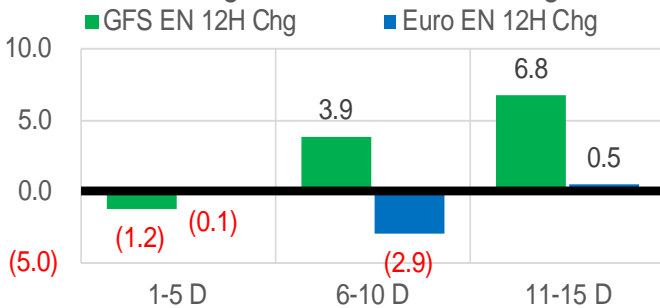
[Nat Gas Options Volume and Open Interest](#)

[Nat Gas Futures Open Interest](#)

[Price Summary](#)

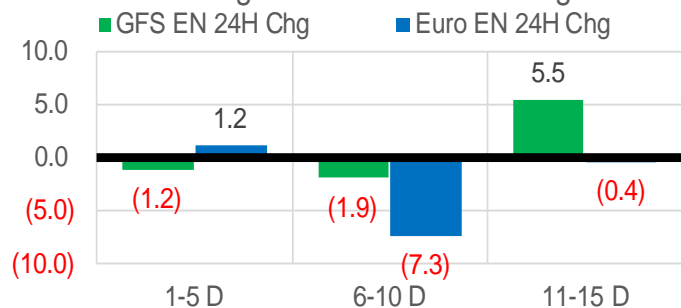
Vs. 12H Ago

L48 Region - 00z TDD vs 12H Ago



Vs. 24H Ago

L48 Region - 00z TDD vs 24H Ago



	Current	Δ from YD	Δ from 7D Avg
US Dry Production	98.6	▼ -1.77	▼ -0.96

	Current	Δ from YD	Δ from 7D Avg
US Power Burns	42.4	▼ -0.69	▲ 0.25

	Current	Δ from YD	Δ from 7D Avg
US ResComm	8.0	▲ 0.01	▲ 0.01

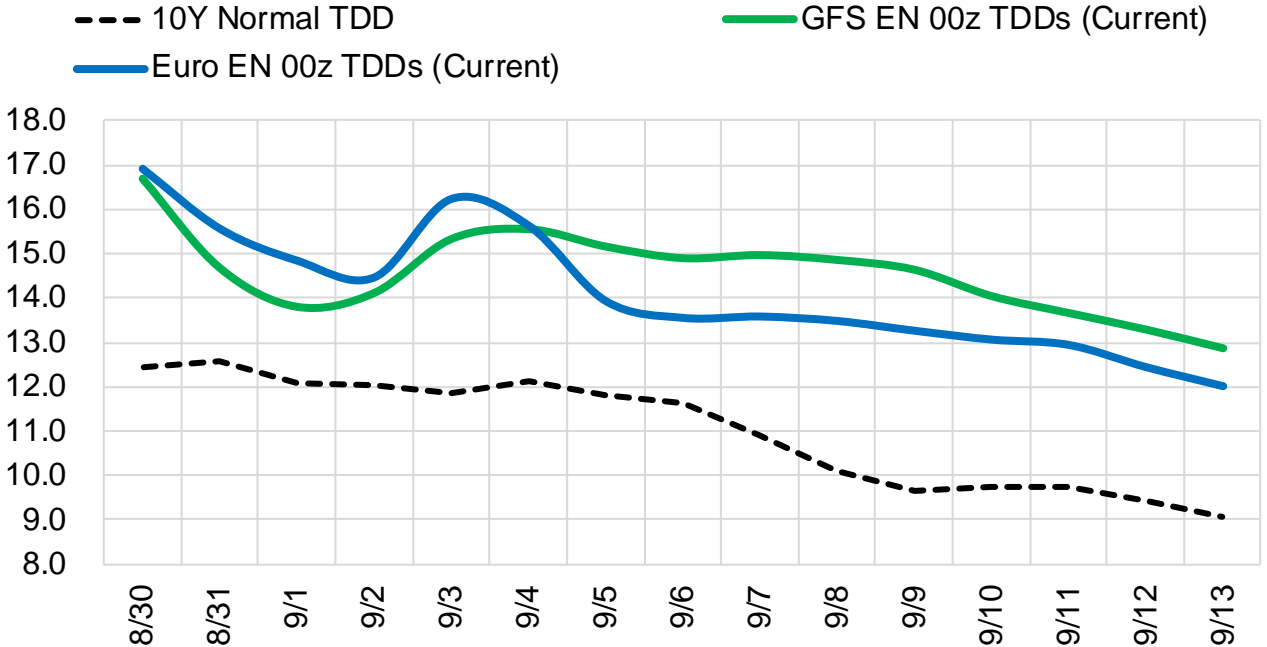
	Current	Δ from YD	Δ from 7D Avg
Canadian Imports	6.1	▲ 0.47	▲ 0.45

	Current	Δ from YD	Δ from 7D Avg
Net LNG Exports	10.8	▲ 0.13	▼ -0.34

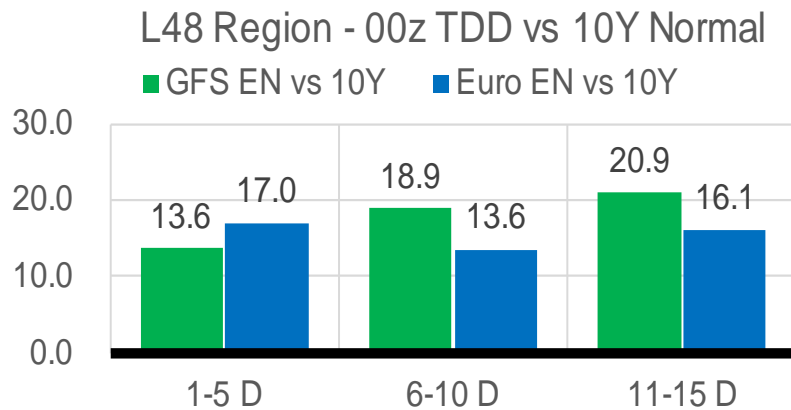
	Current	Δ from YD	Δ from 7D Avg
Mexican Exports	6.7	▼ -0.21	▼ -0.19

Short-term Weather Model Outlooks (00z)

L48 Region



Vs. 10Y Normal



Source: WSI , Bloomberg

Lower 48 Component Models

Daily Balances

	24-Aug	25-Aug	26-Aug	27-Aug	28-Aug	29-Aug	30-Aug	DoD	vs. 7D
Lower 48 Dry Production	98.6	99.1	99.7	100.6	100.4	100.4	98.6	▼ -1.8	▼ -1.2
Canadian Imports	5.7	5.7	5.8	5.5	5.5	5.6	6.1	▲ 0.5	▲ 0.5
L48 Power	43.2	43.9	42.2	39.7	40.1	43.1	42.4	▼ -0.7	▲ 0.4
L48 Residential & Commercial	8.2	8.2	8.1	7.5	7.6	8.0	8.0	▲ 0.0	▲ 0.1
L48 Industrial	21.5	22.0	22.3	22.9	23.2	23.5	23.3	▼ -0.2	▲ 0.8
L48 Lease and Plant Fuel	5.4	5.4	5.4	5.5	5.5	5.5	5.3	▼ -0.1	▼ -0.1
L48 Pipeline Distribution	2.7	2.8	2.7	2.5	2.5	2.7	2.7	▼ 0.0	▲ 0.0
L48 Regional Gas Consumption	81.0	82.3	80.7	78.2	78.9	82.8	81.8	▼ -1.0	▲ 1.1
Net LNG Delivered	11.38	11.55	10.71	11.62	10.95	10.64	10.78	▲ 0.1	▼ -0.4
Total Mexican Exports	7.0	7.1	7.0	6.6	6.7	6.9	6.7	▼ -0.2	▼ -0.2
Implied Daily Storage Activity	5.0	3.8	7.1	9.7	9.4	5.6	5.4		
EIA Reported Daily Storage Activity									
Daily Model Error									

EIA Storage Week Balances

	22-Jul	29-Jul	5-Aug	12-Aug	19-Aug	26-Aug	WoW	vs. 4W
Lower 48 Dry Production	97.4	97.7	99.1	98.5	98.0	98.7	▲ 0.8	▲ 0.4
Canadian Imports	6.2	5.9	5.7	5.4	4.8	5.4	▲ 0.6	▼ 0.0
L48 Power	45.5	44.8	44.4	45.8	39.7	41.6	▲ 1.9	▼ -2.1
L48 Residential & Commercial	8.7	8.6	8.3	8.3	7.9	8.0	▲ 0.2	▼ -0.2
L48 Industrial	21.0	19.4	20.6	21.4	21.5	21.2	▼ -0.4	▲ 0.4
L48 Lease and Plant Fuel	5.3	5.3	5.4	5.4	5.3	5.4	▲ 0.0	▲ 0.0
L48 Pipeline Distribution	2.9	2.8	2.8	2.9	2.5	2.6	▲ 0.1	▼ -0.1
L48 Regional Gas Consumption	83.3	80.9	81.5	83.7	76.9	78.8	▲ 1.8	▼ -2.0
Net LNG Exports	10.8	10.7	10.9	10.9	10.9	11.1	▲ 0.2	▲ 0.3
Total Mexican Exports	7.1	6.9	6.9	7.0	6.9	6.9	▼ -0.1	▼ -0.1
Implied Daily Storage Activity	2.3	5.1	5.4	2.2	7.9	7.4	-0.5	
EIA Reported Daily Storage Activity	2.1	5.9	6.3	2.6	8.6			
Daily Model Error	0.2	-0.8	-0.9	-0.3	-0.6			

Monthly Balances

	2Yr Ago Aug-20	LY Aug-21	Apr-22	May-22	Jun-22	Jul-22	MTD Aug-22	MoM	vs. LY
Lower 48 Dry Production	88.9	93.9	95.1	96.0	97.1	97.4	98.7	▲ 1.3	▲ 4.8
Canadian Imports	4.9	5.1	5.8	5.1	5.7	5.9	5.3	▼ -0.6	▲ 0.2
L48 Power	41.0	40.4	25.1	29.7	36.8	43.4	42.7	▼ -0.8	▲ 2.3
L48 Residential & Commercial	7.7	7.9	22.3	12.4	9.0	8.5	8.1	▼ -0.4	▲ 0.2
L48 Industrial	20.8	21.0	20.1	19.8	20.6	20.3	21.5	▲ 1.3	▲ 0.5
L48 Lease and Plant Fuel	4.8	5.1	5.2	5.3	5.2	5.3	5.4	▲ 0.1	▲ 0.3
L48 Pipeline Distribution	2.5	2.6	2.6	2.4	2.5	2.8	2.7	▼ -0.1	▲ 0.1
L48 Regional Gas Consumption	76.9	77.0	75.3	69.6	74.2	80.2	80.3	▲ 0.1	▲ 3.4
Net LNG Exports	4.0	10.5	12.3	12.5	11.2	10.9	11.0	▲ 0.0	▲ 0.5
Total Mexican Exports	6.0	6.9	6.7	7.0	7.1	7.0	6.9	▼ -0.1	▲ 0.1
Implied Daily Storage Activity	6.8	4.7	6.6	12.0	10.3	5.2	5.8		
EIA Reported Daily Storage Activity									
Daily Model Error									

Source: Bloomberg, analytix.ai

Daily Average Generation Data

Nuclear Generation Daily Average - GWh (NRC)

	22-Aug	23-Aug	24-Aug	25-Aug	26-Aug	27-Aug	28-Aug	DoD	vs. 7D
NRC Nuclear Daily Output	90.3	90.9	90.9	90.9	91.0	91.0	91.0	0.0	0.2
NRC Nuclear Max Capacity	104.9	104.9	104.9	104.9	104.9	104.9	104.9	0.0	0.0
NRC Nuclear Outage	14.6	14.0	14.0	14.0	13.9	13.9	13.9	0.0	-0.2
NRC % Nuclear Cap Utilization	91.8	92.4	92.4	92.4	92.5	92.5	92.5	0.0	0.2

Wind Generation Daily Average - MWh (EIA)

	22-Aug	23-Aug	24-Aug	25-Aug	26-Aug	27-Aug	28-Aug	DoD	vs. 7D
CALI Wind	3535	1819	1516	1912	2283	2667	2008	-659	-281
TEXAS Wind	8295	3324	3215	2240	3799	9831	13304	3473	8187
US Wind	24171	17525	17752	16857	28825	50732	55483	4750	29506

Generation Daily Average - MWh (EIA)

	22-Aug	23-Aug	24-Aug	25-Aug	26-Aug	27-Aug	28-Aug	DoD	vs. 7D
US Wind	24171	17525	17752	16857	28825	50732	55483	4750	29506
US Solar	14990	16337	15824	15307	16799	17889	17409	-480	1218
US Petroleum	1008	1093	1042	1096	1025	1019	1023	4	-24
US Other	10159	10328	10576	10453	10483	10409	10323	-86	-79
US Coal	115603	117912	119486	119850	114606	104566	105634	1068	-9703
US Nuke	93069	93332	93101	93476	93293	92962	92031	-931	-1174
US Hydro	29950	30628	31357	32277	30692	25695	25411	-284	-4689
US Gas	228048	234187	237532	242422	237256	206192	203267	-2925	-27673

See National Wind and Nuclear daily charts

Source: Bloomberg, analytix.ai

Storage Week Average Generation Data

Nuclear Generation Weekly Average - GWh (NRC)

	22-Jul	29-Jul	5-Aug	12-Aug	19-Aug	26-Aug	WoW	WoW Bcf/d Impact
NRC Nuclear Daily Output	90.5	90.1	90.6	90.7	91.2	90.3	-0.9	0.2
NRC Nuclear Max Capacity	104.9	104.9	104.9	104.9	104.9	104.9	0.0	
NRC Nuclear Outage	14.4	14.8	14.3	14.1	13.7	14.5	0.9	
NRC % Nuclear Cap Utilization	92.0	91.6	92.1	92.3	92.8	91.9	-0.9	

Wind Generation Weekly Average - MWh (EIA)

	22-Jul	29-Jul	5-Aug	12-Aug	19-Aug	26-Aug	WoW	WoW Bcf/d Impact
CALI Wind	2470	3049	1933	1901	1953	2324	371	-0.1
TEXAS Wind	11182	14533	14443	8762	7139	5879	-1260	0.2
US Wind	40505	44003	43887	32976	28474	23568	-4906	0.9
							-17%	
							-0.2	

Generation Weekly Average - MWh (EIA)

	22-Jul	29-Jul	5-Aug	12-Aug	19-Aug	26-Aug	WoW	WoW Bcf/d Impact
						est.		
US Wind	40505	44003	43887	32976	28474	23568	-4906	0.9
US Solar	18727	18098	17577	17568	16951	15683	-1268	0.2
US Petroleum	1707	1465	1131	1737	1045	1047	1	0.0
US Other	10492	10690	10470	10725	9882	10220	338	-0.1
US Coal	121563	128742	122297	122575	112824	114385	1561	-0.3
US Nuke	92543	92281	92607	92966	94032	92872	-1160	0.2
US Hydro	33645	32210	31339	30400	30431	30472	42	0.0
US Gas	249151	238167	236187	252451	218061	226172	8111	1.5

See National Wind and Nuclear daily charts

Source: Bloomberg, analytix.ai

Monthly Average Generation Data

Nuclear Generation Monthly Average - GWh (NRC)

	2Yr Ago	LY					MTD		
	Same 30 days	Same 30 days	May-22	Jun-22	Jul-22	Aug-22	Last 30 days	MoM (MTD vs LY)	Last 30 days YoY
	NRC Nuclear Daily Output	90.8	91.5	81.7	88.5	90.6	90.6	90.6	0.0
NRC Nuclear Max Capacity	104.9	104.9	104.9	104.9	104.9	104.9	104.9	0.0	0.0
NRC Nuclear Outage	14.0	13.3	23.2	16.3	14.3	14.3	14.3	0.0	1.0
NRC % Nuclear Cap Utilization	92.4	93.1	83.0	90.0	92.1	92.1	92.1	0.0	-1.0

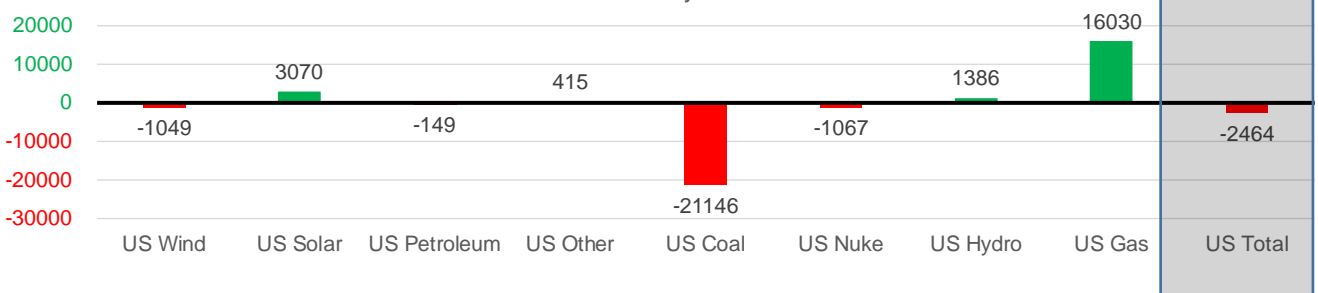
Wind Generation Monthly Average - MWh (EIA)

	2Yr Ago	LY					MTD		
	Same 30 days	Same 30 days	May-22	Jun-22	Jul-22	Aug-22	Last 30 days	MoM (MTD vs LY)	Last 30 days YoY
	CALI Wind	2244	2423	3361	2875	2719	2087	2087	-632
TEXAS Wind	8551	10020	16756	13441	11765	9022	9022	-2743	-998
US Wind	30708	35982	56649	47161	39701	34933	34933	-4767	-1049

Generation Monthly Average - MWh (EIA)

	2Yr Ago	LY					MTD		
	Same 30 days	Same 30 days	May-22	Jun-22	Jul-22	Aug-22	Last 30 days	MoM (MTD vs LY)	Last 30 days YoY
	US Wind	30708	35982	56649	47161	39701	34933	34933	▲ 0.0
US Solar	10703	13880	18212	19386	18593	16950	16950	▲ 0.0	▲ 3070
US Petroleum	1160	1389	518	998	1252	1239	1239	▲ 0	▼ -149
US Other	9776	9920	7723	8530	9961	10336	10336	▲ 0	▲ 415
US Coal	122862	137526	85695	105186	119788	116380	116380	▲ 0	▼ -21146
US Nuke	93083	94121	85495	89904	92883	93054	93054	▲ 0	▼ -1067
US Hydro	29422	28557	31811	37522	34185	29944	29944	▲ 0	▲ 1386
US Gas	219569	214059	157670	199828	235788	230089	230089	▲ 0	▲ 16030
US Total	515053	535261	443969	508081	551806	532797	532797	▲ 0	▼ -2464

Last 30 days YoY



See National Wind and Nuclear daily charts

Source: Bloomberg, analytix.ai

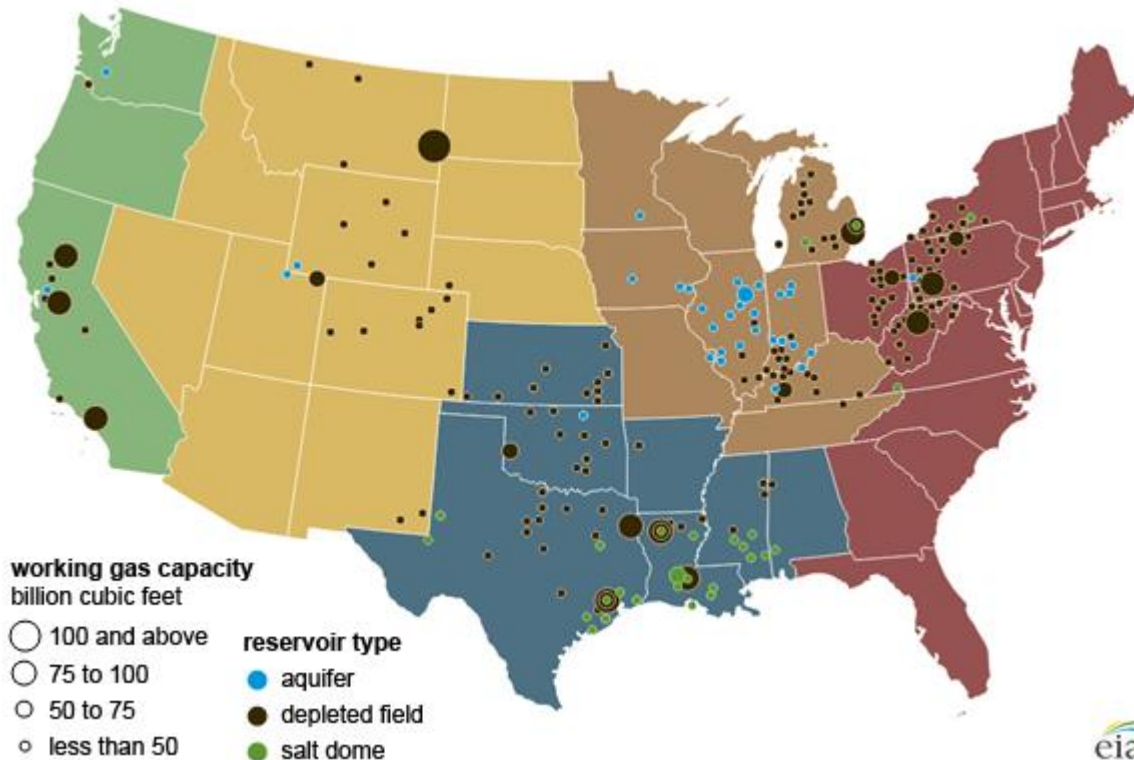
Regional S/D Models Storage Projection

Week Ending 26-Aug

	Daily Raw Storage	Daily Adjustment Factor	Daily Average Storage Activity (Adjusted) *	Weekly Adjusted Storage Activity
L48	8.1	-0.2	7.9	56
East	1.0	2.0	3.0	21
Midwest	4.7	-0.7	4.0	28
Mountain	4.6	-4.1	0.5	3
South Central	-2.3	3.1	0.8	6
Pacific	0.2	-0.5	-0.4	-2

*Adjustment Factor is calculated based on historical regional deltas

U.S. underground natural gas storage facilities by type (July 2015)

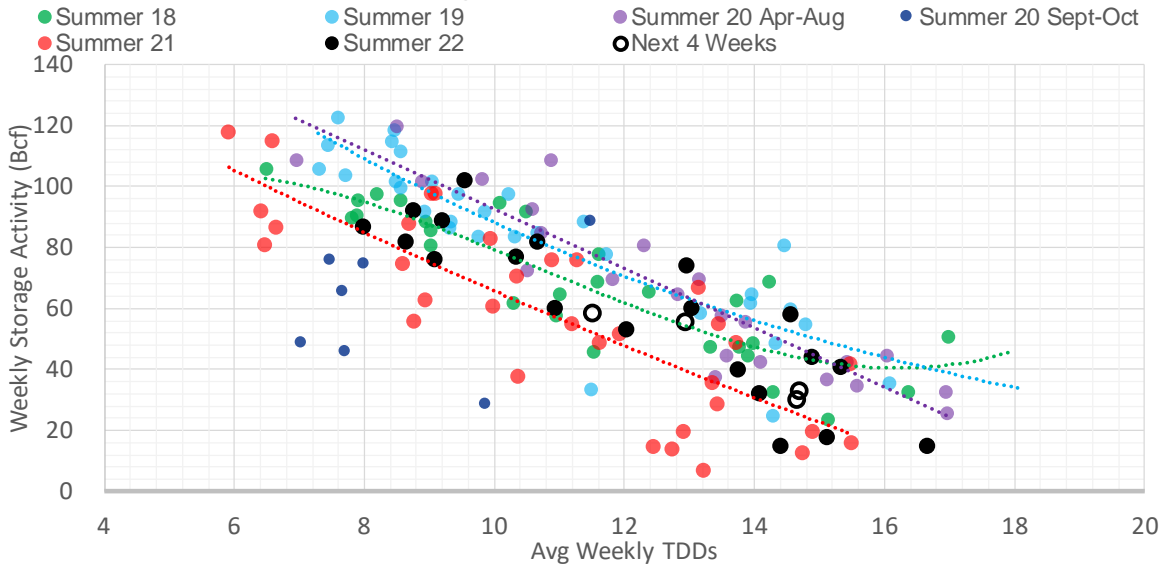


Weather Model Storage Projection

Next report and beyond

Week Ending	GWDDs	Week Storage Projection
26-Aug	13.0	56
02-Sep	14.7	33
09-Sep	14.7	30
16-Sep	11.5	58

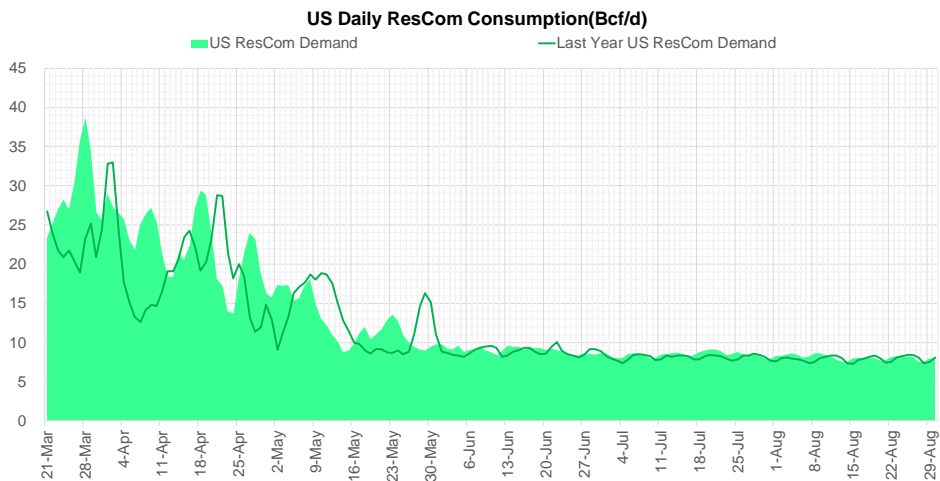
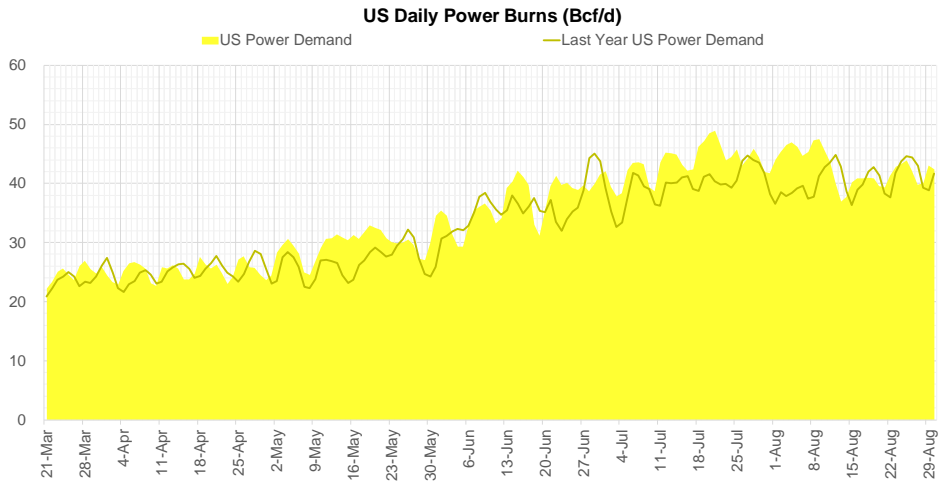
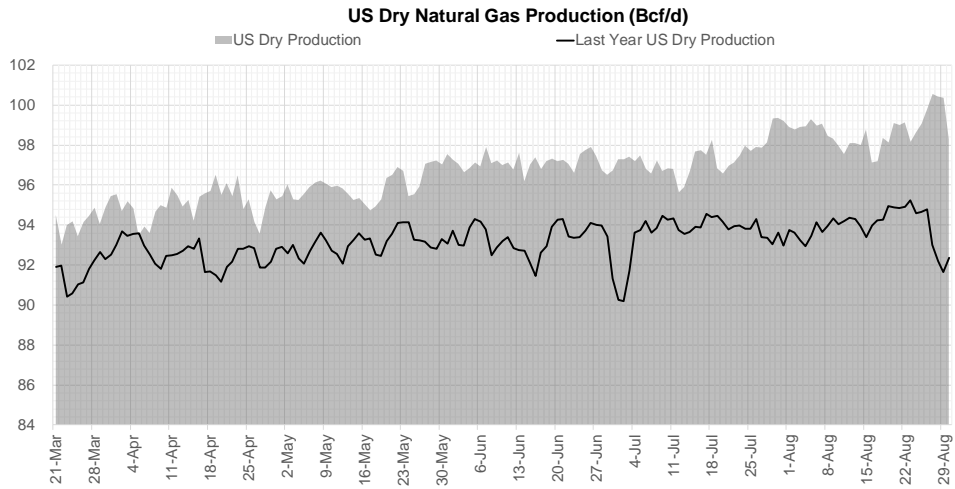
Weather Storage Model - Next 4 Week Forecast



Go to larger image



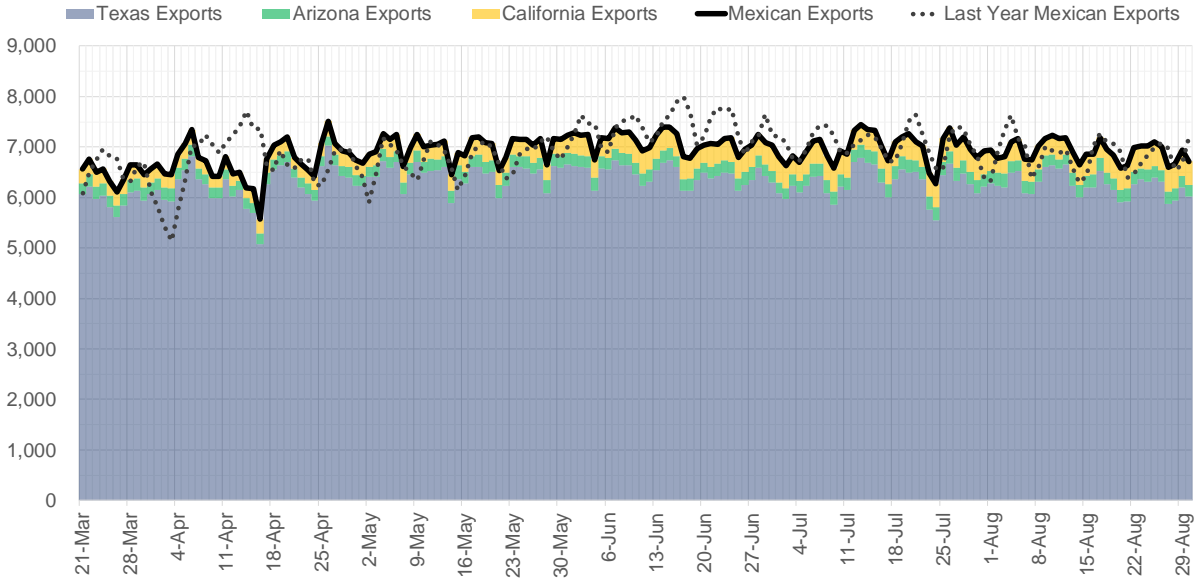
Supply – Demand Trends



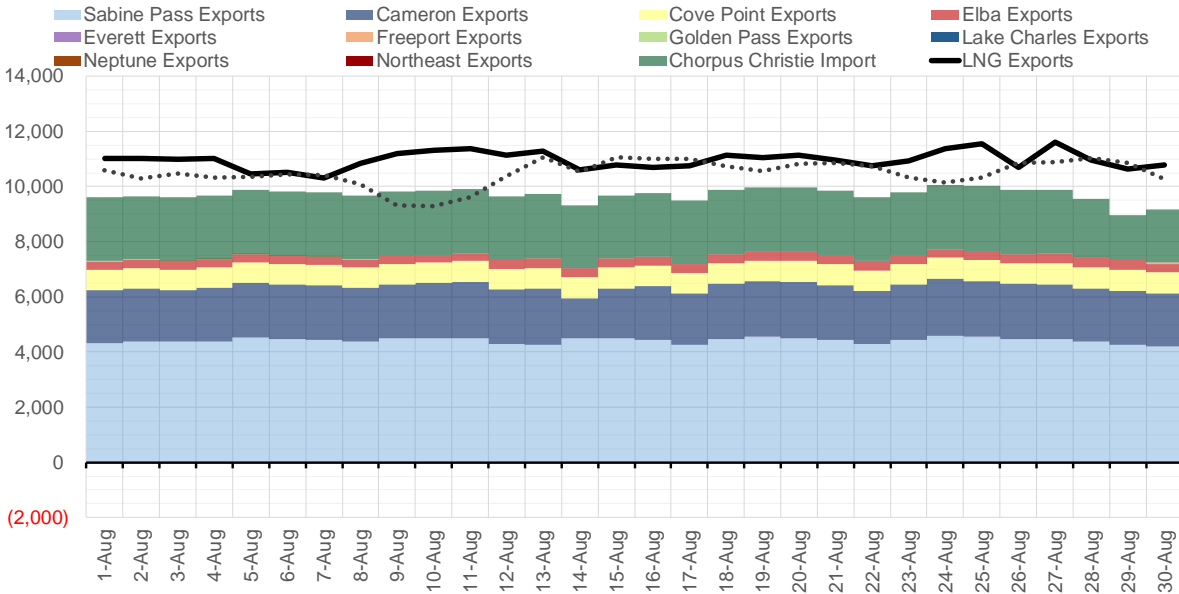
Source: Bloomberg

The risk of trading futures and options and other derivatives involves a substantial risk of loss and is not suitable for all persons. Each person must consider whether a particular trade, combination of trades, or strategy is suitable for that person's financial means and objectives. Past results are not necessarily indicative of future results. This communication may contain links to third party websites which are not under the control of and are not maintained by ION Energy Group, and ION Energy Group is not responsible for their content.

Mexican Exports (MMcf/d)



Net LNG Exports - Last 30 days (MMcf/d)



Source: Bloomberg

The risk of trading futures and options and other derivatives involves a substantial risk of loss and is not suitable for all persons. Each person must consider whether a particular trade, combination of trades, or strategy is suitable for that person's financial means and objectives. Past results are not necessarily indicative of future results. This communication may contain links to third party websites which are not under the control of and are not maintained by ION Energy Group, and ION Energy Group is not responsible for their content.

Nat Gas Options Volume and Open Interest CME and ICE Combined

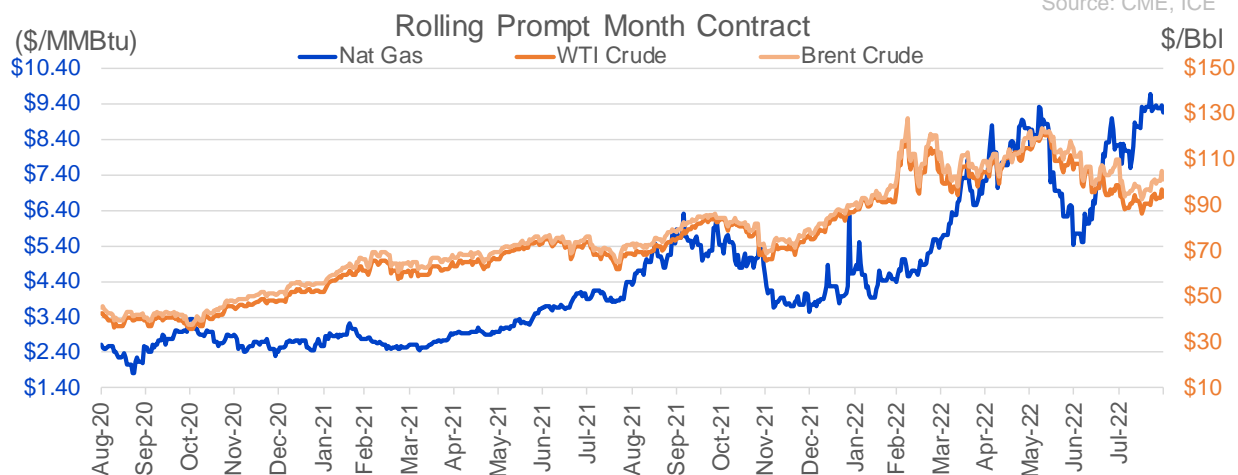
CONTRACT MONTH	CONTRACT YEAR	PUT/CALL	STRIKE	CUMULATIVE VOL	CONTRACT MONTH	CONTRACT YEAR	PUT/CALL	STRIKE	CUMULATIVE OI
11	2022	C	4.00	8000	10	2022	P	3.00	36673
10	2022	P	7.00	3775	10	2022	C	6.00	36011
10	2022	P	6.00	3313	10	2022	P	6.00	34586
10	2022	P	8.00	3282	10	2022	P	5.00	31478
11	2022	P	6.00	3065	10	2022	P	2.50	28111
11	2022	P	5.50	3001	10	2022	C	5.00	23273
10	2022	C	10.00	2383	10	2022	P	3.50	22419
11	2022	P	4.00	2220	3	2023	C	10.00	22003
10	2022	P	9.00	1883	10	2022	P	4.00	21261
10	2022	C	12.00	1824	10	2022	C	10.00	21199
10	2022	P	8.50	1561	5	2023	P	2.00	21197
10	2022	C	11.50	1542	10	2022	C	12.00	21188
4	2023	P	3.00	1475	12	2022	P	5.00	21128
5	2023	P	3.00	1475	11	2022	P	4.00	20321
6	2023	P	3.00	1475	12	2022	C	5.00	18218
7	2023	P	3.00	1475	3	2023	P	3.00	18152
8	2023	P	3.00	1475	10	2023	P	2.50	17350
9	2023	P	3.00	1475	10	2022	C	8.00	16977
10	2023	P	3.00	1475	11	2022	P	6.00	16900
10	2022	C	12.50	1380	10	2022	P	2.00	16759
10	2022	C	15.00	1290	4	2023	P	3.00	16709
12	2022	P	5.00	1207	10	2022	P	5.50	16657
3	2023	C	20.00	1100	2	2023	C	10.00	16254
1	2023	C	30.00	1051	3	2023	C	20.00	16230
1	2023	C	20.00	1000	11	2022	C	12.00	15740
10	2022	C	10.50	988	10	2023	P	3.00	15628
10	2022	P	6.50	934	1	2023	C	10.00	15489
10	2022	P	7.75	887	10	2023	P	2.00	15480
11	2022	C	20.00	838	10	2022	P	3.25	15262
11	2022	C	18.00	780	10	2022	C	7.00	15090
10	2022	C	9.50	631	2	2023	C	9.00	14644
10	2022	C	16.00	626	1	2023	P	5.00	14358
10	2022	P	5.00	624	10	2022	P	7.00	14301
12	2022	P	6.00	600	11	2022	C	10.00	14000
11	2022	C	15.00	569	12	2022	C	6.00	13981
10	2022	C	11.00	546	11	2022	P	5.00	13937
11	2022	P	7.00	530	6	2023	P	3.00	13785
11	2022	C	5.00	500	10	2022	C	9.00	13738
10	2022	C	13.00	490	4	2023	P	2.75	13720
10	2022	P	9.50	456	5	2023	P	3.00	13688
1	2023	C	10.00	451	10	2022	C	11.00	13684
10	2022	P	9.30	437	11	2022	C	8.00	13573
1	2023	P	5.00	405	10	2022	P	4.00	13309
10	2022	C	30.00	403	10	2022	P	2.75	13286
10	2022	P	5.50	403	10	2022	C	3.00	13214
11	2022	C	12.00	403	7	2023	P	3.00	13210
10	2022	P	7.25	401	10	2022	P	8.00	13052
1	2023	C	14.00	400	5	2023	C	5.00	13024
2	2023	C	14.00	400	8	2023	P	3.00	13010
					9	2023	P	3	13010

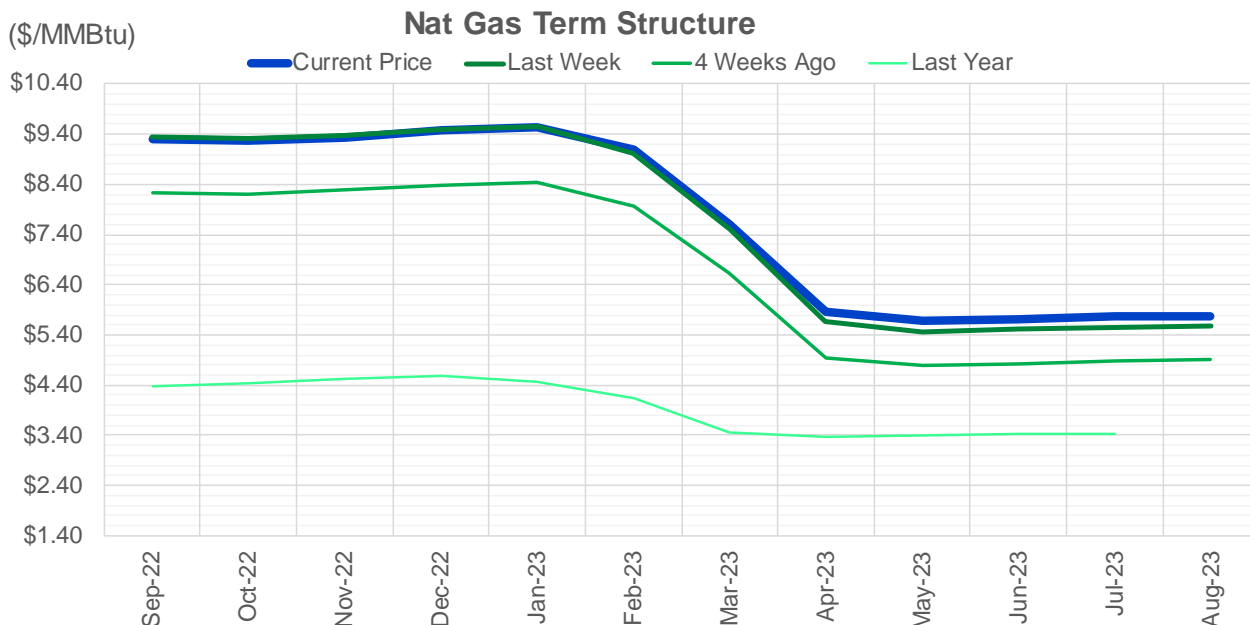
Source: CME, ICE

Nat Gas Futures Open Interest CME and ICE Combined

CME Henry Hub Futures (10,000 MMBtu)				ICE Henry Hub Futures Contract Equivalent (10,000 MM			
	Current	Prior	Daily Change		Current	Prior	Daily Change
OCT 22	246	989	-743	OCT 22	82950	81242	1708
NOV 22	125189	119149	6040	NOV 22	78877	79808	-931
DEC 22	129684	128162	1522	DEC 22	69429	69701	-273
JAN 23	69550	70936	-1386	JAN 23	69162	68764	397
FEB 23	87966	85654	2312	FEB 23	67940	67747	193
MAR 23	37805	37185	620	MAR 23	62934	62732	202
APR 23	59735	59127	608	APR 23	55159	55402	-244
MAY 23	71878	72238	-360	MAY 23	57117	57202	-85
JUN 23	75539	75279	260	JUN 23	55719	55851	-132
JUL 23	23769	23759	10	JUL 23	47398	47285	113
AUG 23	24932	25144	-212	AUG 23	46901	46760	141
SEP 23	19600	18527	1073	SEP 23	45560	45584	-24
OCT 23	21786	21339	447	OCT 23	44683	44540	143
NOV 23	53335	53032	303	NOV 23	52369	52252	117
DEC 23	14081	14099	-18	DEC 23	46004	45849	155
JAN 24	12562	12555	7	JAN 24	41785	41636	149
FEB 24	19749	19629	120	FEB 24	40364	40328	36
MAR 24	8154	8108	46	MAR 24	30921	30906	15
APR 24	18159	17986	173	APR 24	35836	35813	23
MAY 24	14649	14416	233	MAY 24	28769	28682	87
JUN 24	7313	7283	30	JUN 24	27716	27626	91
JUL 24	2780	2774	6	JUL 24	24934	24827	107
AUG 24	2555	2553	2	AUG 24	24818	24726	92
SEP 24	3353	3346	7	SEP 24	24412	24316	97
OCT 24	2065	2055	10	OCT 24	24332	24242	90
NOV 24	9006	9002	4	NOV 24	27718	27742	-25
DEC 24	4947	4947	0	DEC 24	25409	25365	44
JAN 25	8090	8092	-2	JAN 25	28704	28659	45
FEB 25	16614	16617	-3	FEB 25	21953	21904	49
MAR 25	976	976	0	MAR 25	14666	14627	39

Source: CME, ICE





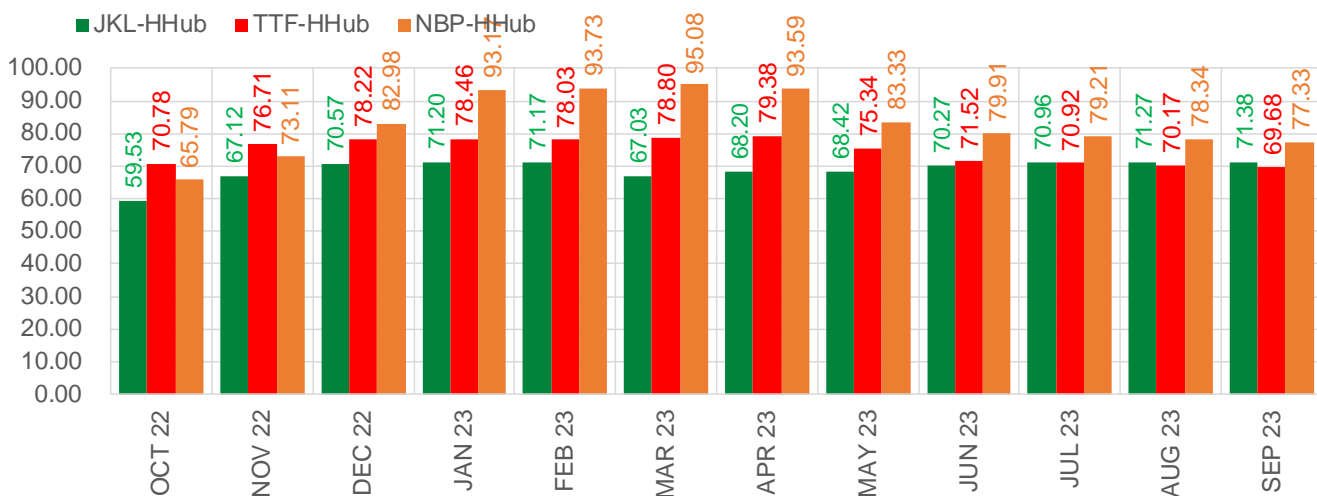
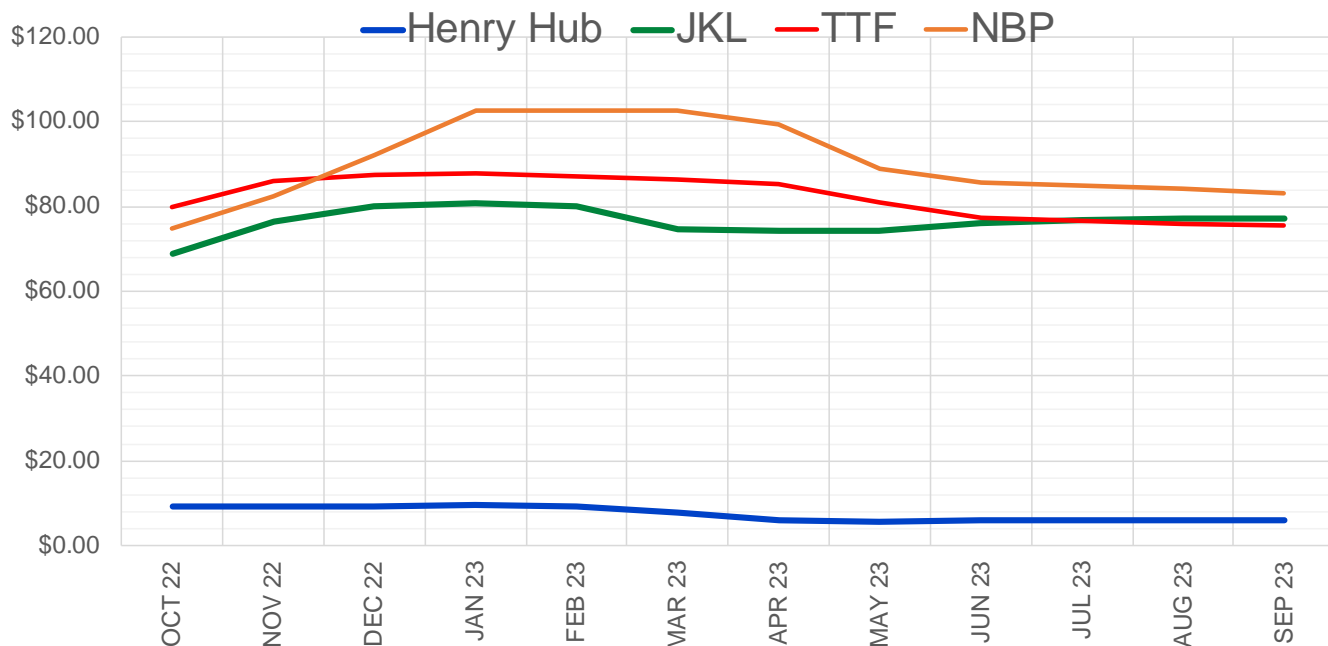
	Sep-22	Oct-22	Nov-22	Dec-22	Jan-23	Feb-23	Mar-23	Apr-23	May-23	Jun-23	Jul-23	Aug-23
Current Price	\$9.296	\$9.269	\$9.332	\$9.473	\$9.539	\$9.092	\$7.617	\$5.848	\$5.669	\$5.718	\$5.766	\$5.778
Last Week	\$9.336	\$9.315	\$9.385	\$9.492	\$9.552	\$9.030	\$7.496	\$5.656	\$5.462	\$5.508	\$5.555	\$5.567
vs. Last Week	-\$0.040	-\$0.046	-\$0.053	-\$0.019	-\$0.013	\$0.062	\$0.121	\$0.192	\$0.207	\$0.210	\$0.211	\$0.211
4 Weeks Ago	\$8.229	\$8.208	\$8.283	\$8.374	\$8.441	\$7.973	\$6.636	\$4.943	\$4.780	\$4.830	\$4.887	\$4.897
vs. 4 Weeks Ago	\$1.067	\$1.061	\$1.049	\$1.099	\$1.098	\$1.119	\$0.981	\$0.905	\$0.889	\$0.888	\$0.879	\$0.881
Last Year	\$4.370	\$4.388	\$4.434	\$4.522	\$4.574	\$4.480	\$4.140	\$3.472	\$3.379	\$3.405	\$3.436	\$3.443
vs. Last Year	\$4.926	\$4.881	\$4.898	\$4.951	\$4.965	\$4.612	\$3.477	\$2.376	\$2.290	\$2.313	\$2.330	\$2.335

	Units	Cash Settled	Prompt Settle	Cash to Prompt
AGT Citygate	\$/MMBtu	9.07	9.04	-0.04
TETCO M3	\$/MMBtu	8.89	8.41	-0.48
FGT Zone 3	\$/MMBtu	8.99	10.52	1.53
Zone 6 NY	\$/MMBtu	8.99	8.38	-0.61
Chicago Citygate	\$/MMBtu	8.77	9.31	0.54
Michcon	\$/MMBtu	8.87	9.22	0.35
Columbia TCO Pool	\$/MMBtu	8.23	8.50	0.27
Ventura	\$/MMBtu	5.95	9.22	3.27
Rockies/Opal	\$/MMBtu	8.70	9.05	0.35
El Paso Permian Basin	\$/MMBtu	7.78	8.32	0.54
Socal Citygate	\$/MMBtu	11.19	10.43	-0.76
Malin	\$/MMBtu	8.45	9.27	0.82
Houston Ship Channel	\$/MMBtu	8.74	9.30	0.57
Henry Hub Cash	\$/MMBtu	9.24	9.08	-0.16
AECO Cash	C\$/GJ	0.61	4.62	4.01
Station2 Cash	C\$/GJ	-0.14	8.96	9.10
Dawn Cash	C\$/GJ	8.77	9.25	0.48

Source: CME, Bloomberg

	Units	Current Price	vs. Last Week	vs. 4 Weeks Ago	vs. Last Year
NatGas Jul21/Oct21	\$/MMBtu	2.224	▲ 0.000	▲ 0.000	▲ 1.536
NatGas Oct21/Nov21	\$/MMBtu	0.361	▲ 0.000	▲ 0.000	▲ 0.307
NatGas Oct21/Jan22	\$/MMBtu	-1.817	▲ 0.000	▲ 0.000	▼ -2.011
NatGas Apr22/Oct22	\$/MMBtu	4.000	▼ -0.311	▲ 1.076	▲ 4.004
WTI Crude	\$/Bbl	97.01	▲ 6.780	▲ 3.120	▲ 27.800
Brent Crude	\$/Bbl	105.09	▲ 8.610	▲ 5.060	▲ 31.680
Fuel Oil, NY Harbour 1%	\$/Bbl	97.18	▲ 0.000	▲ 0.000	▲ 0.000
Heating Oil	cents/Gallon	390.99	▲ 13.370	▲ 46.990	▲ 176.960
Propane, Mt. Bel	cents/Gallon	1.10	▲ 0.006	▼ -0.014	▼ -0.018
Ethane, Mt. Bel	cents/Gallon	0.60	▼ -0.010	▲ 0.013	▲ 0.268
Coal, PRB	\$/MTon	12.30	▲ 0.000	▲ 0.000	▲ 0.000
Coal, PRB	\$/MMBtu	0.70			
Coal, ILB	\$/MTon	31.05	▲ 0.000	▲ 0.000	▲ 0.000
Coal, ILB	\$/MMBtu	1.32			

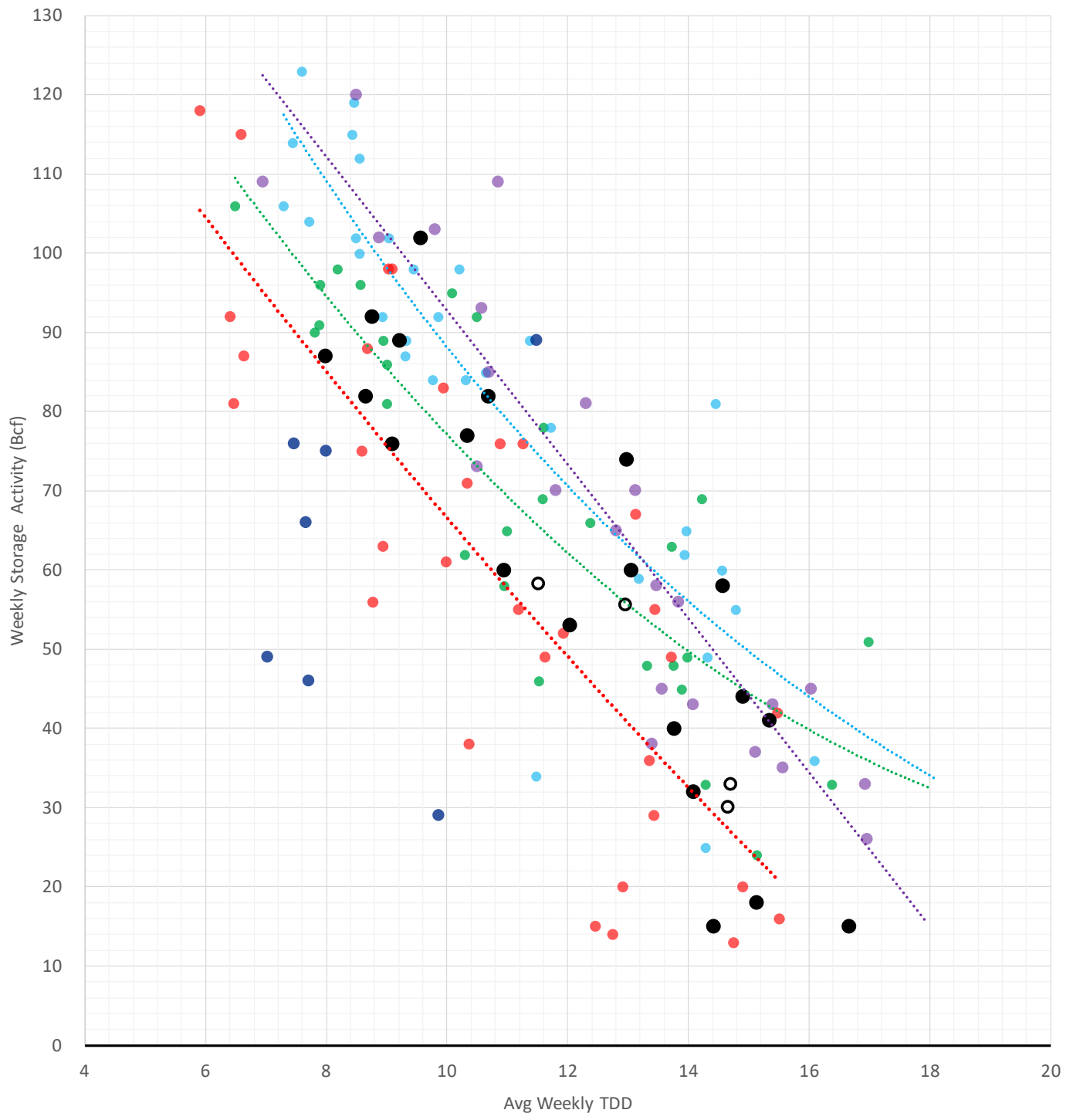
Nat Gas Term Structure (\$MMBTU)



	OCT 22	NOV 22	DEC 22	JAN 23	FEB 23	MAR 23	APR 23	MAY 23	JUN 23	JUL 23	AUG 23	SEP 23
Henry Hub	\$9.139	\$9.197	\$9.338	\$9.398	\$9.017	\$7.640	\$5.916	\$5.735	\$5.785	\$5.825	\$5.839	\$5.812
JKL	\$68.665	\$76.320	\$79.910	\$80.595	\$80.185	\$74.665	\$74.120	\$74.150	\$76.055	\$76.785	\$77.110	\$77.190
JKL-HHub	\$59.526	\$67.123	\$70.572	\$71.197	\$71.168	\$67.025	\$68.204	\$68.415	\$70.270	\$70.960	\$71.271	\$71.378
TTF	\$79.916	\$85.907	\$87.561	\$87.859	\$87.049	\$86.436	\$85.295	\$81.078	\$77.304	\$76.748	\$76.013	\$75.493
TTF-HHub	\$70.777	\$76.710	\$78.223	\$78.461	\$78.032	\$78.796	\$79.379	\$75.343	\$71.519	\$70.923	\$70.174	\$69.681
NBP	\$74.927	\$82.307	\$92.322	\$102.565	\$102.747	\$102.722	\$99.510	\$89.069	\$85.691	\$85.037	\$84.178	\$83.145
NBP-HHub	\$65.788	\$73.110	\$82.984	\$93.167	\$93.730	\$95.082	\$93.594	\$83.334	\$79.906	\$79.212	\$78.339	\$77.333

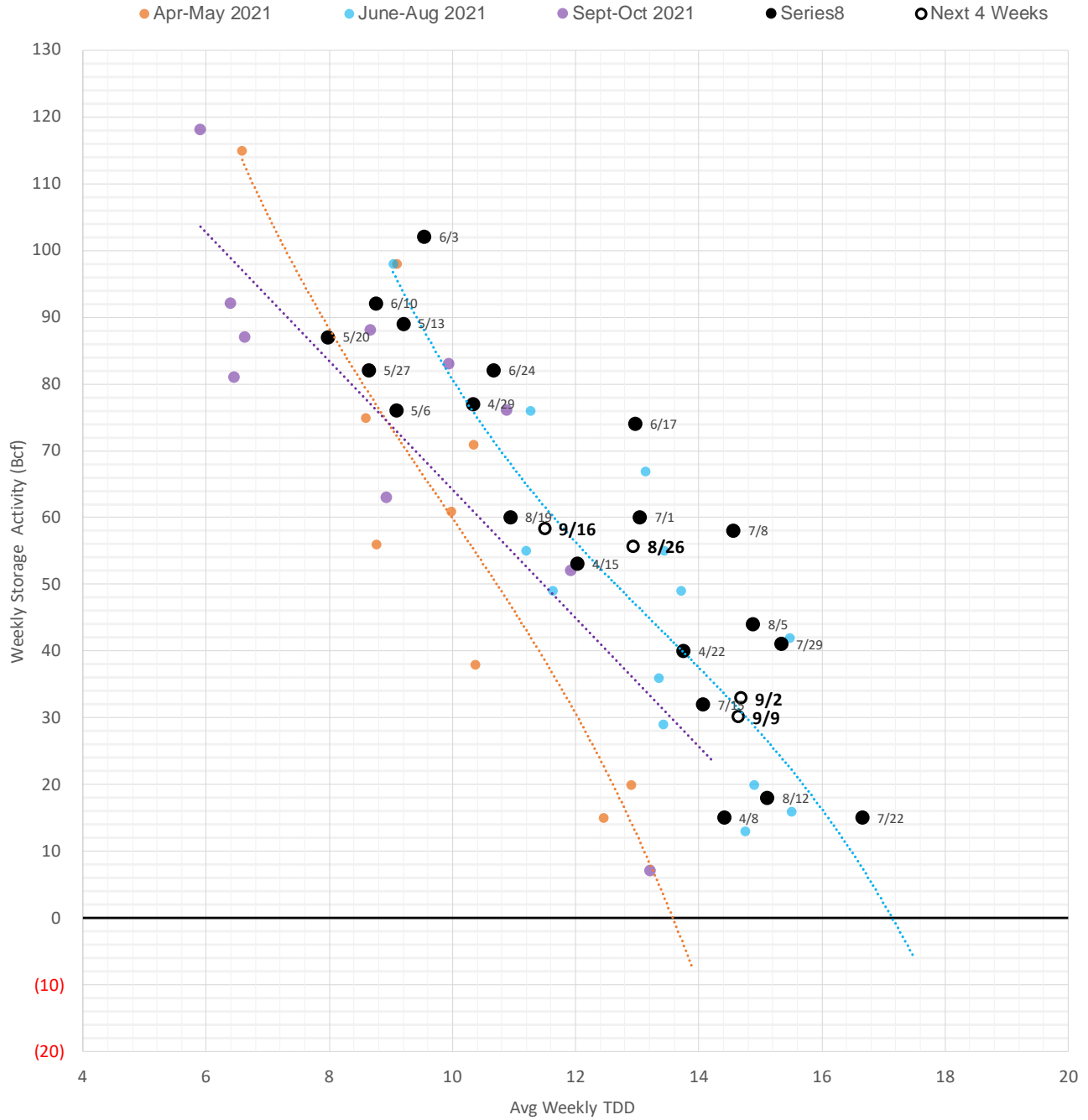
Weather Storage Model - Next 4 Week Forecast

● Summer 18 ● Summer 19 ● Summer 20 Apr-Aug ● Summer 20 Sept-Oct ● Summer 21 ● Summer 22 ○ Next 4 Weeks



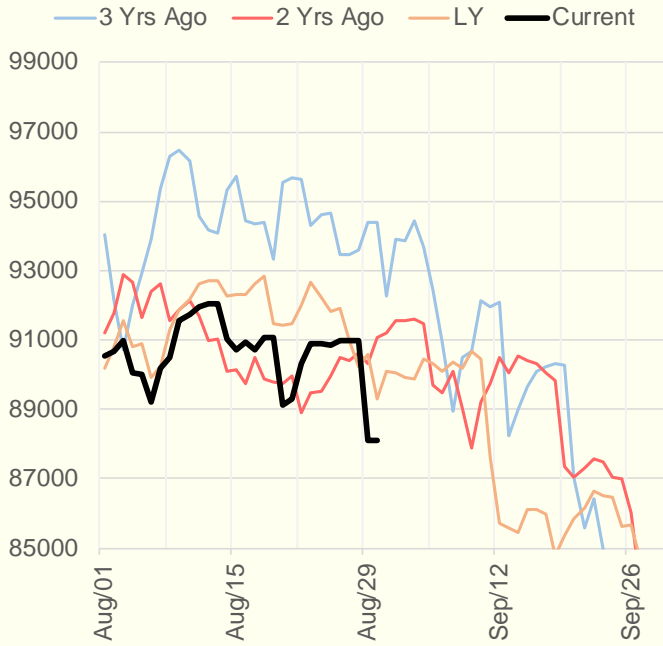
The risk of trading futures and options and other derivatives involves a substantial risk of loss and is not suitable for all persons. Each person must consider whether a particular trade, combination of trades, or strategy is suitable for that person's financial means and objectives. Past results are not necessarily indicative of future results. This communication may contain links to third party websites which are not under the control of and are not maintained by ION Energy Group, and ION Energy Group is not responsible for their content.

Weather Storage Model - Next 4 Week Forecast

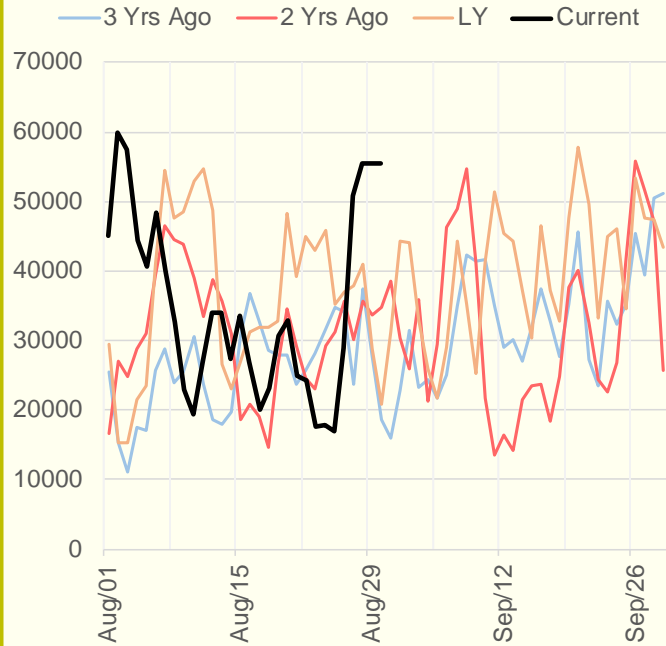


The risk of trading futures and options and other derivatives involves a substantial risk of loss and is not suitable for all persons. Each person must consider whether a particular trade, combination of trades, or strategy is suitable for that person's financial means and objectives. Past results are not necessarily indicative of future results. This communication may contain links to third party websites which are not under the control of and are not maintained by ION Energy Group, and ION Energy Group is not responsible for their content.

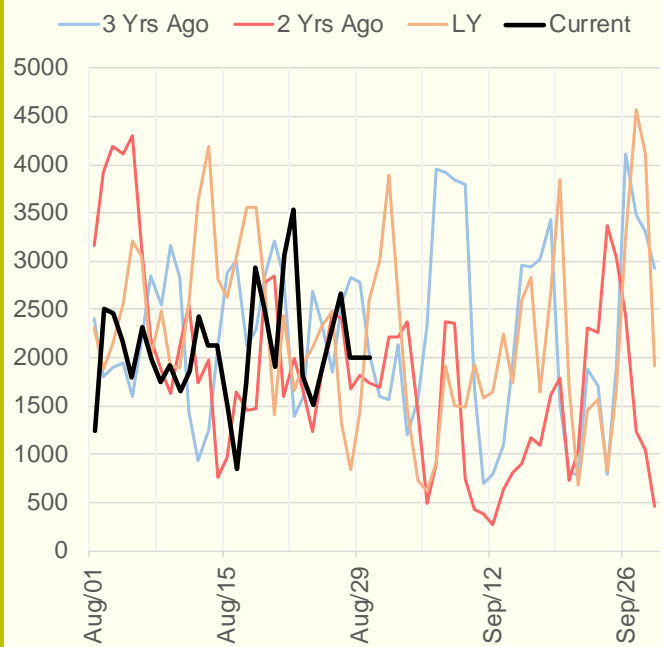
NRC Nuclear Daily Output



US Wind



CALI Wind



TEXAS Wind

