

## Traditional Daily Estimate of Funds 9/6/22

	(Neg)-"Short"	Pos-"Long"			
Actual less Est.	9.1	11.7	8.7	(3.1)	1.8
	<b>Corn</b>	<b>Bean</b>	<b>Chi. Wheat</b>	<b>Meal</b>	<b>Oil</b>
<b>Actual</b>	286.5	81.3	(9.8)	107.1	48.8
7-Sep	(3.0)	(5.0)	10.0	2.0	(2.0)
8-Sep	(3.0)	(5.0)	10.0	2.0	(2.0)
9-Sep	8.0	8.0	13.0	2.5	2.0
12-Sep					
13-Sep					
<b>FI Est. of Futures Only 9/6/22</b>	<b>288.5</b>	<b>79.3</b>	<b>23.2</b>	<b>113.6</b>	<b>46.8</b>
<b>FI Est. Futures &amp; Options</b>	<b>280.3</b>	<b>84.5</b>	<b>22.8</b>	<b>104.6</b>	<b>43.2</b>
Futures only record long "Traditional Funds"	547.7 1/26/2021	280.9 11/10/2020	86.5 8/7/2018	167.5 5/1/2018	160.2 11/1/2016
Futures only record short	(235.0) 6/9/2020	(118.3) 4/30/2019	(130.0) 4/25/2017	(49.5) 3/1/2016	(69.8) 9/18/2018
Futures and options record net long	557.6 1/12/2021	270.9 10/6/2020	64.8 8/7/2012	132.1 5/1/2018	159.2 1/1/2016
Futures and options record net short	(270.6) 4/26/2019	(132.0) 4/30/2019	(143.3) 4/25/2017	(64.1) 3/1/2016	(77.8) 9/18/2018

## Managed Money Daily Estimate of Funds 9/6/22

	Corn	Bean	Chi. Wheat	Meal	Oil
Latest CFTC Fut. Only	210.2	99.6	(23.4)	81.2	43.7
Latest CFTC F&O	226.5	99.6	(21.4)	81.6	44.0
FI Est. Managed Fut. Only	212	98	10	88	42
FI Est. Managed Money F&O	228	98	12	88	42

## Index Funds Latest Positions (as of last Tuesday)

Index Futures & Options	371.9	139.5	116.0	NA	101.9
Change From Previous Week	(3.9)	(4.6)	(2.1)	NA	(1.2)

Source: Reuters, CFTC & FI (FI est. are noted with latest date)

**COMMITMENT OF TRADERS  
FUTURES ONLY NET POSITIONS  
AS OF 09/06/2022  
(IN THOUSAND CONTRACTS)**

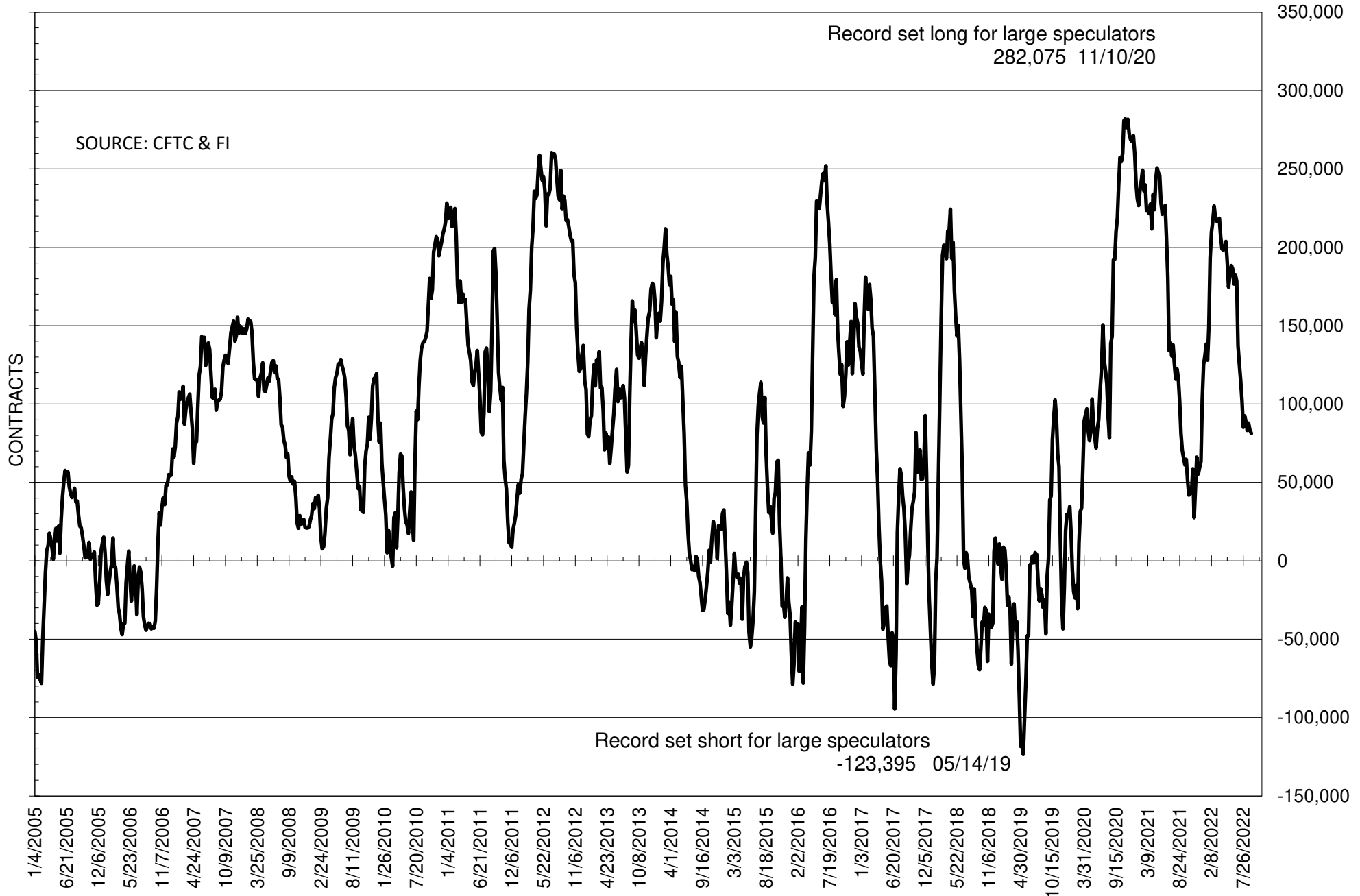
	COMMERCIAL				(FUND) NON COMMERCIAL				(SPEC) NON-REPORTABLE			
	6-Sep	30-Aug	23-Aug	16-Aug	6-Sep	30-Aug	23-Aug	16-Aug	6-Sep	30-Aug	23-Aug	16-Aug
	<b>WHEAT</b>											
Chicago	13.7	14.9	12.3	7.4	-9.8	-11.5	-8.3	-1.9	-3.9	-3.4	-4.1	-5.5
Kansas City	-7.5	-7.1	-6.2	-3.2	8.1	8.5	6.8	3.4	-0.5	-1.3	-0.6	-0.2
Minneapolis	-0.5	-0.1	0.9	-0.1	2.5	1.9	1.9	2.7	-2.0	-1.8	-2.8	-2.6
All Wheat	5.6	7.7	7.1	4.2	0.8	-1.1	0.5	4.2	-6.5	-6.6	-7.5	-8.4
<b>CORN</b>	-230.7	-225.8	-206.8	-166.3	286.5	283.4	263.2	220.1	-55.8	-57.6	-56.4	-53.8
<b>OATS</b>	-0.5	-0.4	#VALUE!	#VALUE!	0.0	0.1	#VALUE!	#VALUE!	0.5	0.2	#VALUE!	#VALUE!
<b>SOYBEANS</b>	-50.8	-52.8	-58.4	-51.7	81.3	83.6	87.8	83.2	-30.4	-30.8	-29.5	-31.5
<b>SOY OIL</b>	-55.1	-62.7	-55.5	-46.8	48.8	54.0	46.6	41.0	6.4	8.8	8.9	5.8
<b>SOY MEAL</b>	-126.6	-137.8	-141.2	-135.9	107.1	116.2	117.6	112.2	19.5	21.6	23.7	23.7

Oats positions thin to be reported

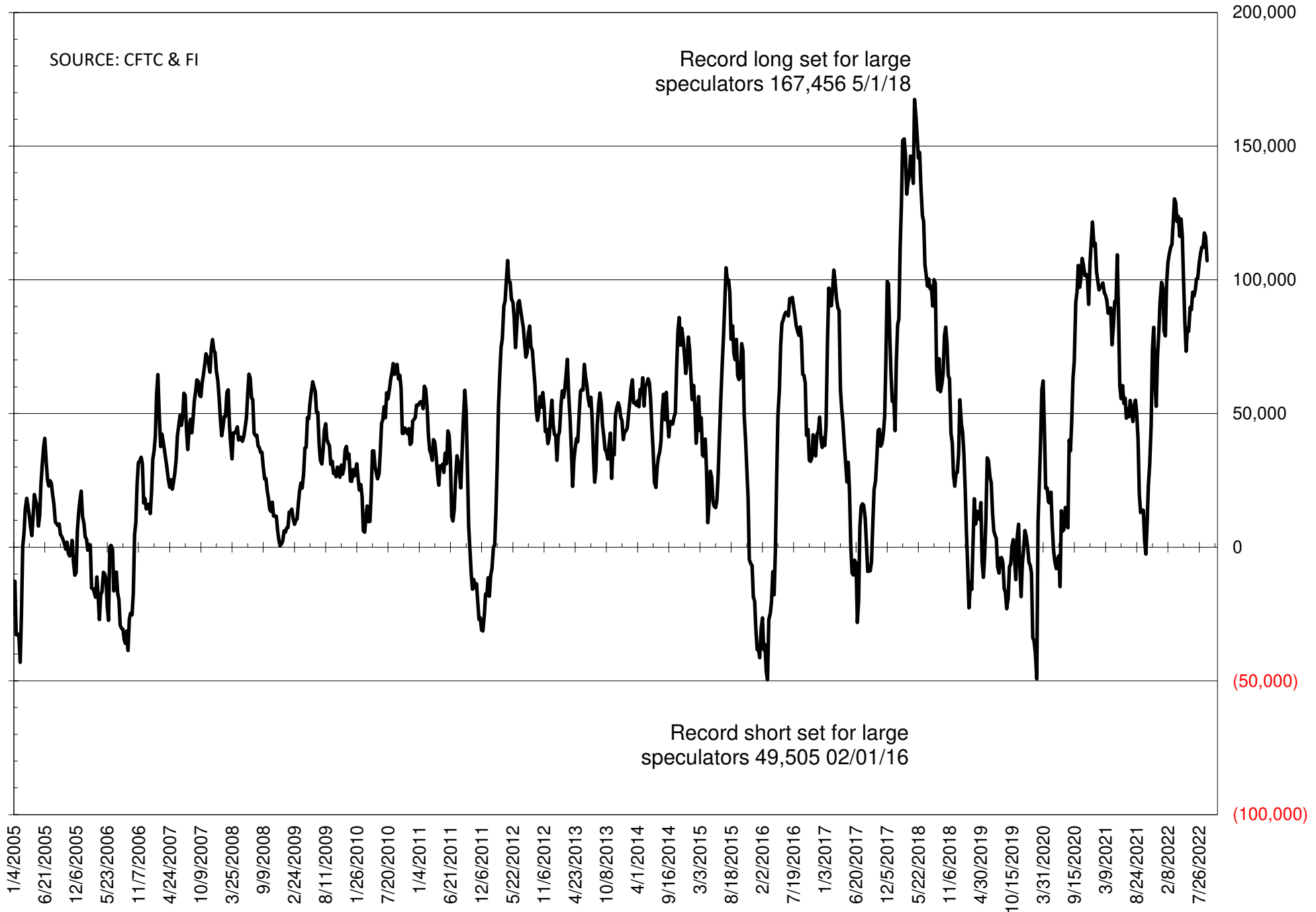
	TOTAL OPEN INTEREST				NEARBY FUTURES PRICE					6-Sep-22 LAST REPORTED % HELD BY TRADERS			
	6-Sep	30-Aug	23-Aug	16-Aug	V/X/Z Latest	V/X/Z 6-Sep	V/X/Z 30-Aug	U 23-Aug	U 16-Aug	LARGE FUND		SMALL	
										LONG	SHORT	LONG	SHORT
<b>WHEAT</b>													
Chicago	289329	288545	320495	313237		817.00	820.25	783.00	786.00	0%	34%	0%	11%
Kansas City	146259	145155	157509	156392		882.00	897.75	883.50	871.75	0%	25%	0%	13%
Minneapolis	45971	45136	54693	56844		889.75	921.00	900.75	902.75	0%	10%	0%	22%
<b>CORN</b>	1280087	1267735	1312958	1316462		676.00	677.25	660.25	611.00	0%	9%	0%	13%
<b>OATS</b>	3489	3238	#VALUE!	#VALUE!		383.75	398.00	412.75	441.75	0%	21%	0%	32%
<b>SOYBEANS</b>	606187	605924	611218	595095		1398.75	1432.50	1570.00	1454.25	25%	12%	6%	11%
<b>SOY OIL</b>	393510	390796	407225	401326		64.90	67.69	69.66	67.84	0%	8%	0%	6%
<b>SOY MEAL</b>	389152	391177	421420	414099		410.60	429.80	467.20	452.20	0%	5%	0%	7%

SOURCE: CFTC & FI

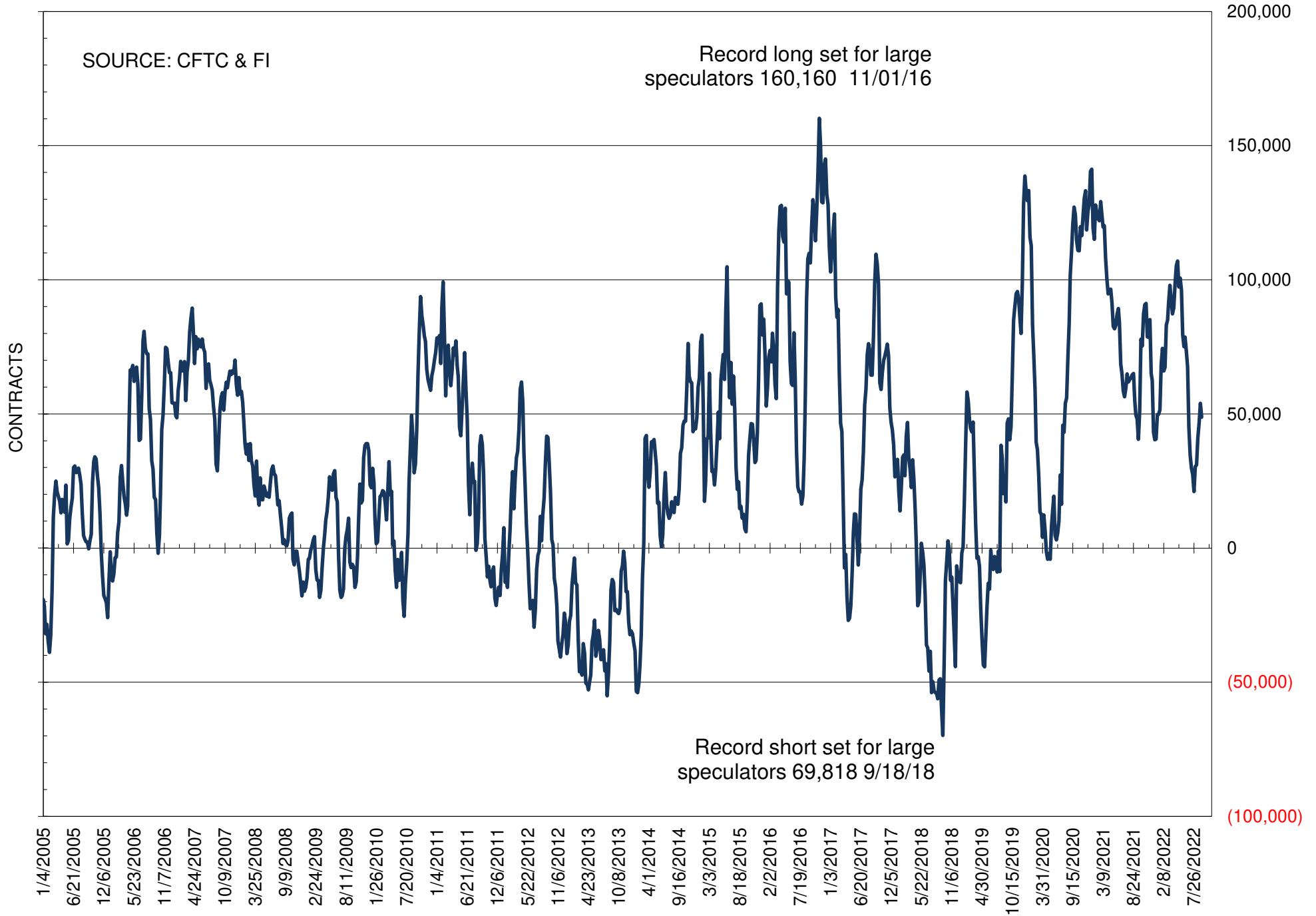
# NET POSITION OF FUTURES ONLY LARGE SPECS IN SOYBEANS



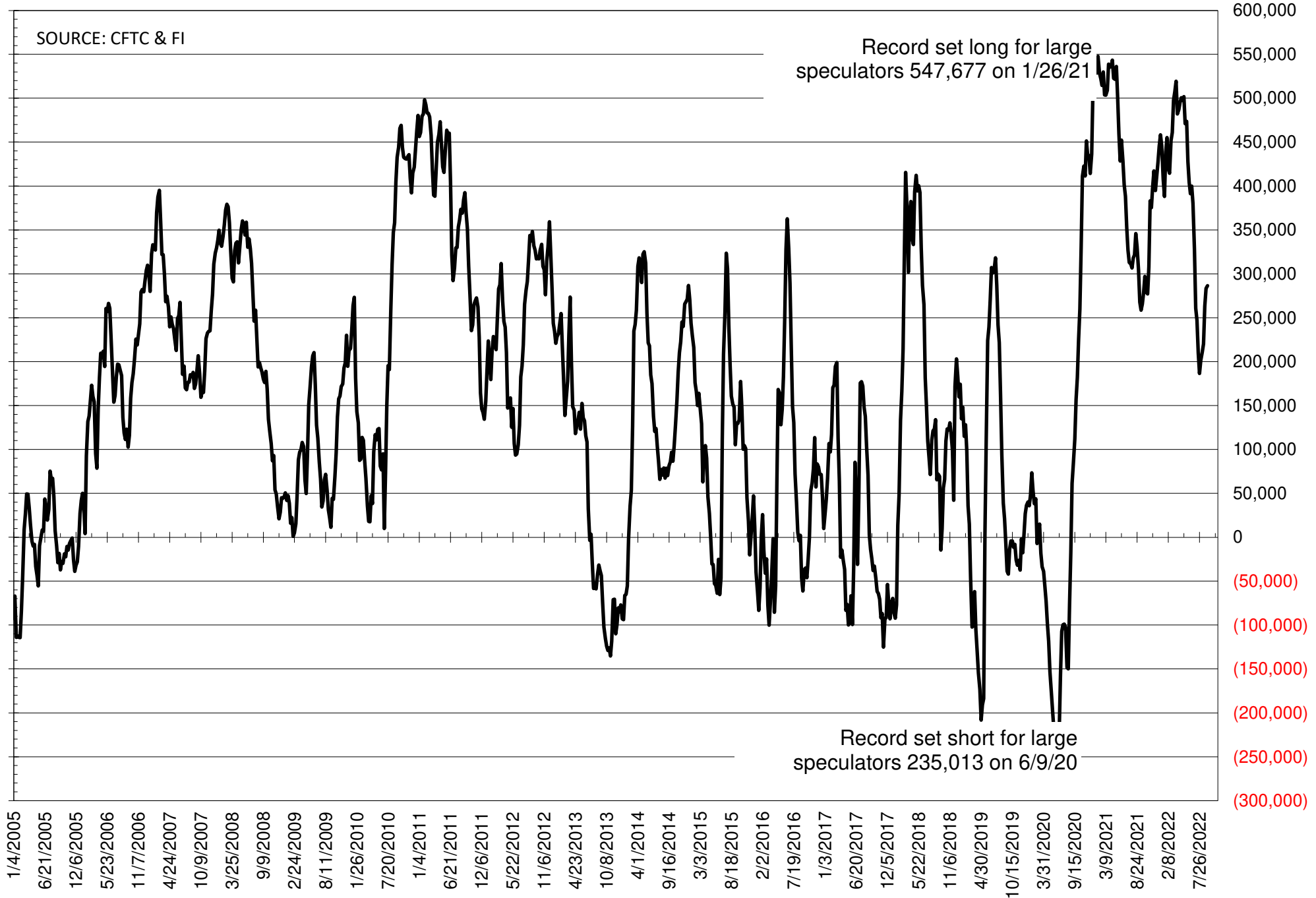
# NET POSITION OF FUTURES ONLY LARGE SPECS IN SOYMEAL



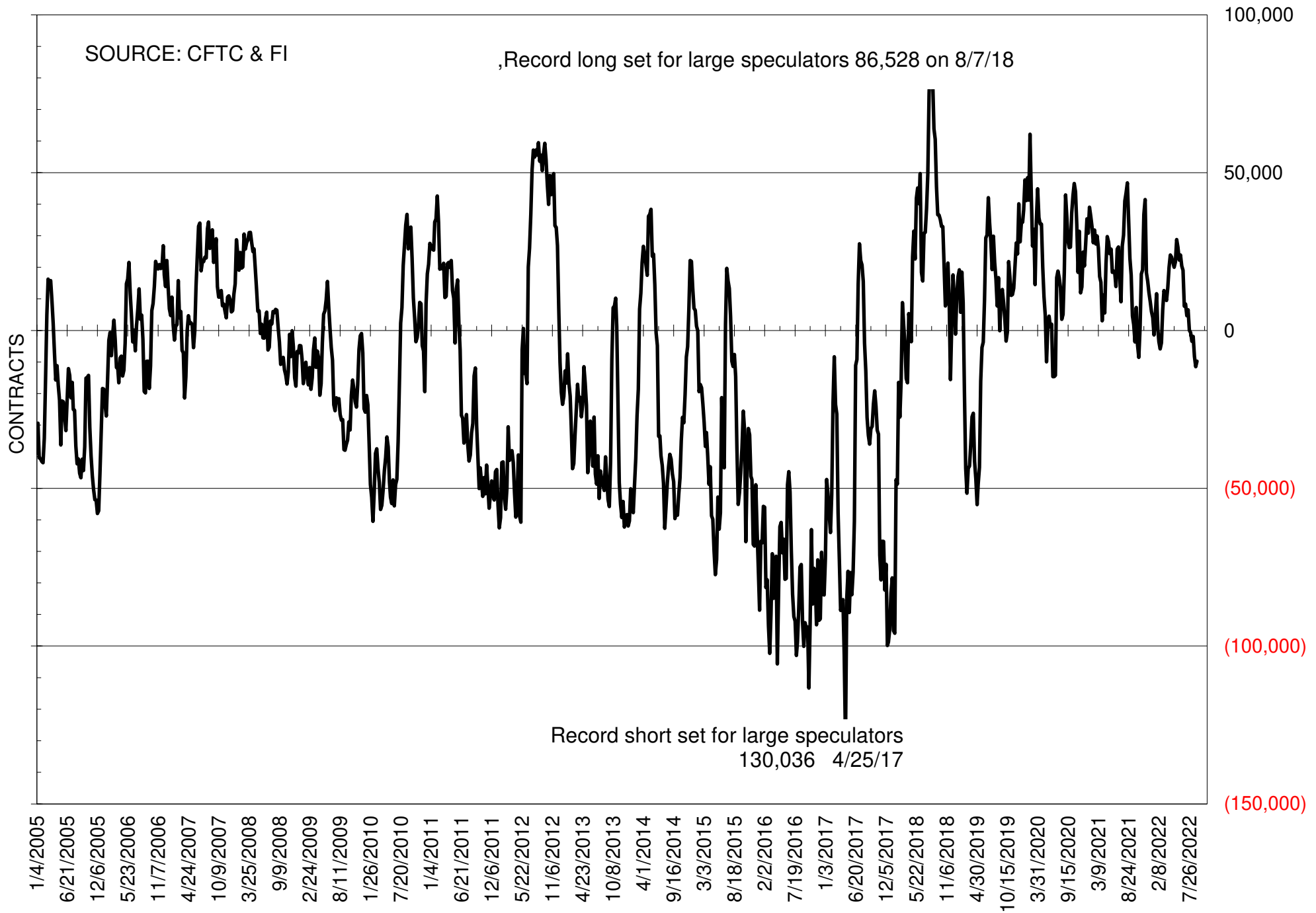
# NET POSITION OF FUTURES ONLY LARGE SPECS IN SOYOIL



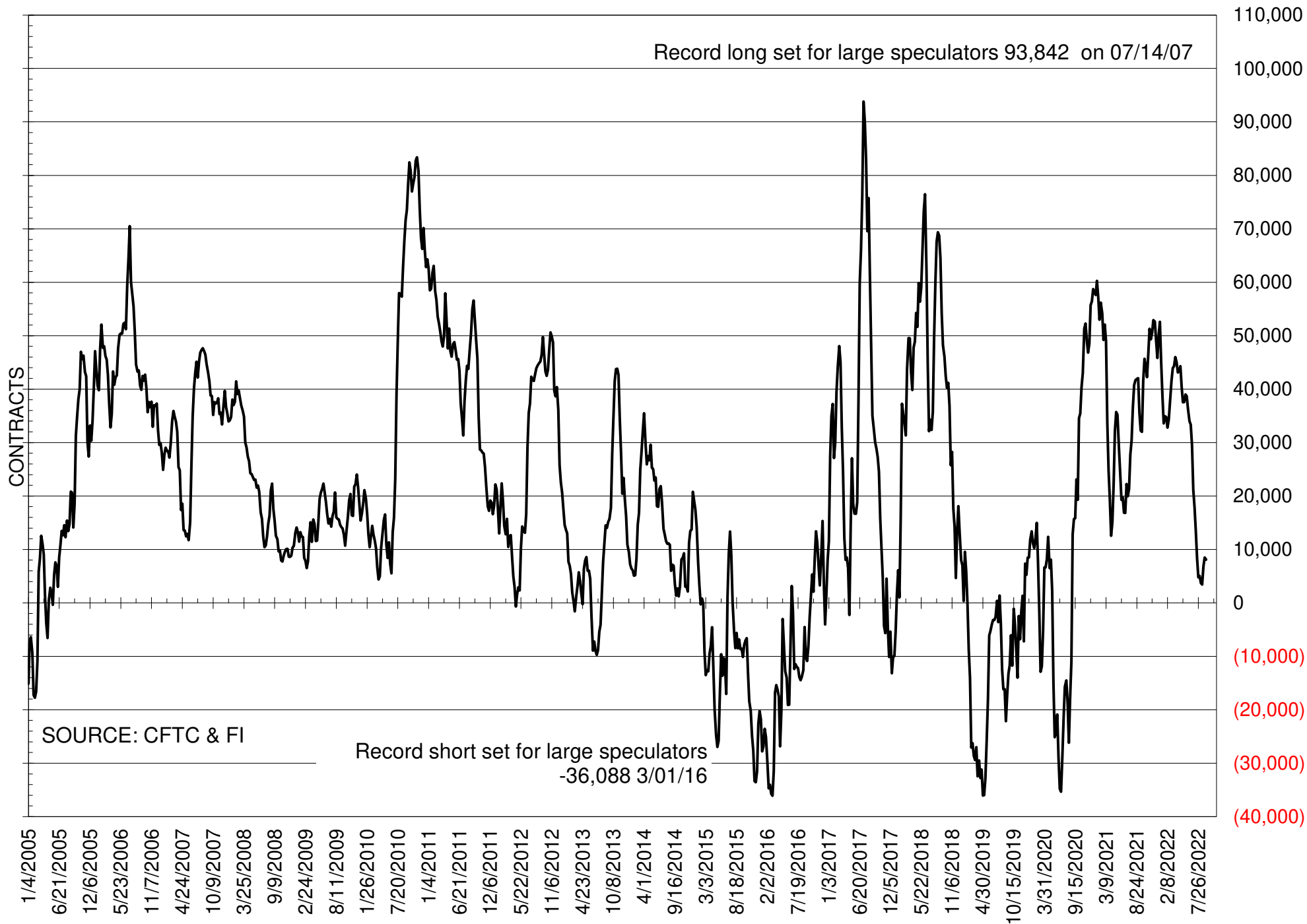
# NET POSITION OF LARGE SPECULATORS IN CORN



# NET POSITION OF FUTURES ONLY LARGE SPECS IN CHICAGO WHEAT

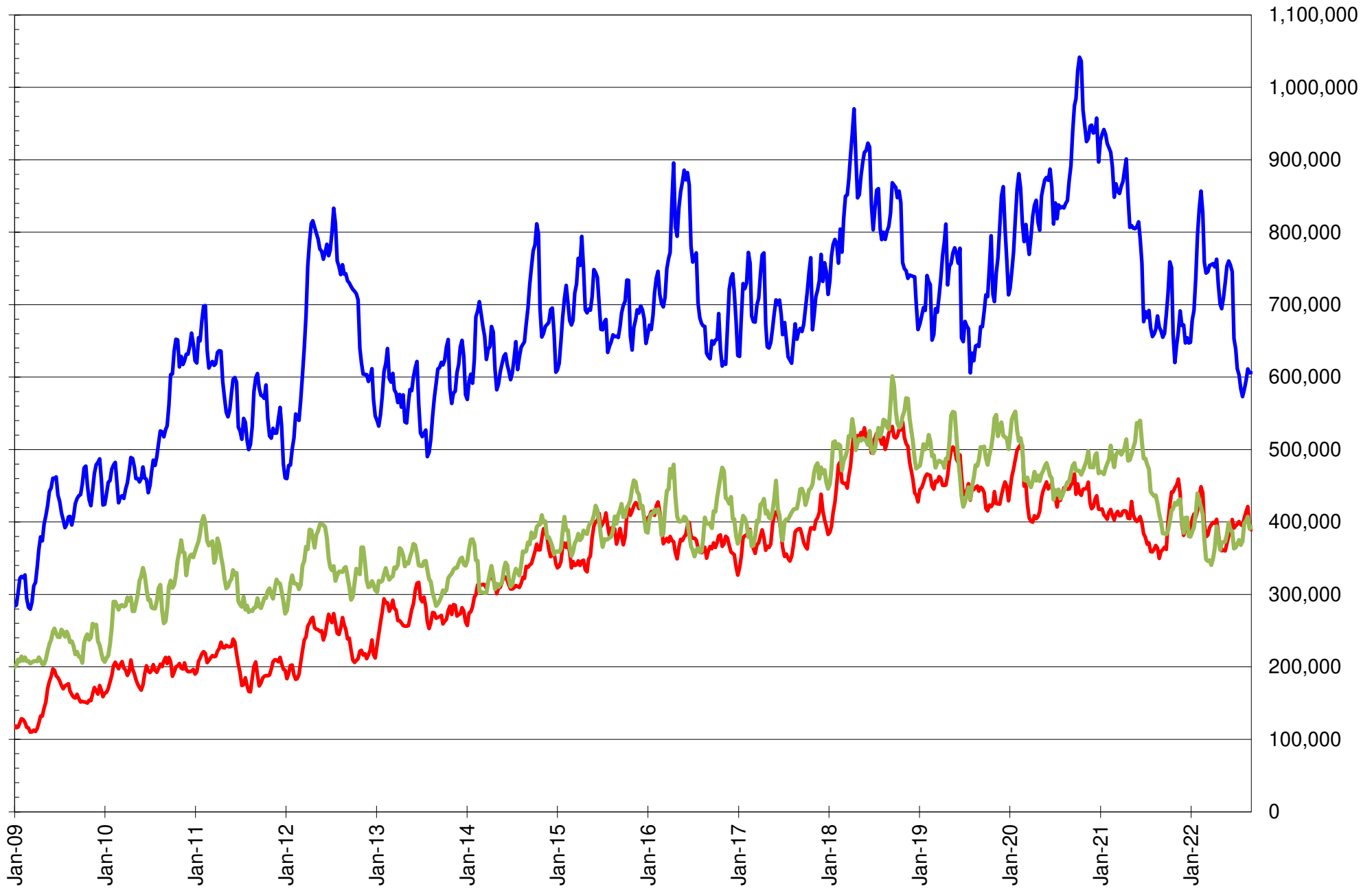


# NET POSITION OF LARGE SPECULATORS IN KANSAS CITY WHEAT





# TOTAL OPEN INTEREST IN SOYBEANS, MEAL AND OIL, FUTURES ONLY



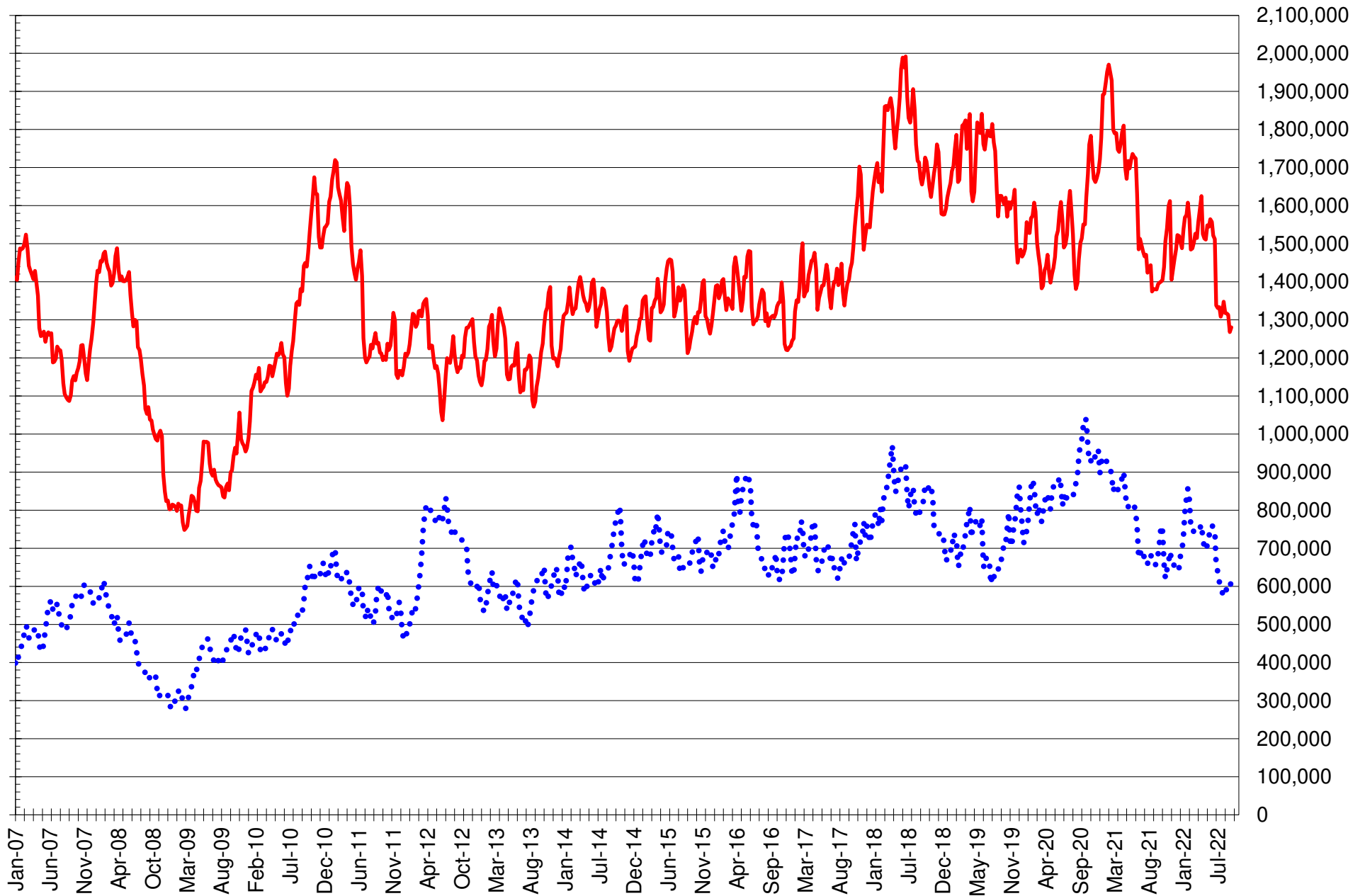
SOURCE: CFTC & FI

— SOYBEANS

— SOYBEAN MEAL

— SOYBEAN OIL

# TOTAL OPEN INTEREST IN CORN AND SOYBEANS, FUTURES ONLY



SOURCE: CFTC & FI

— CORN

••••• SOYBEANS

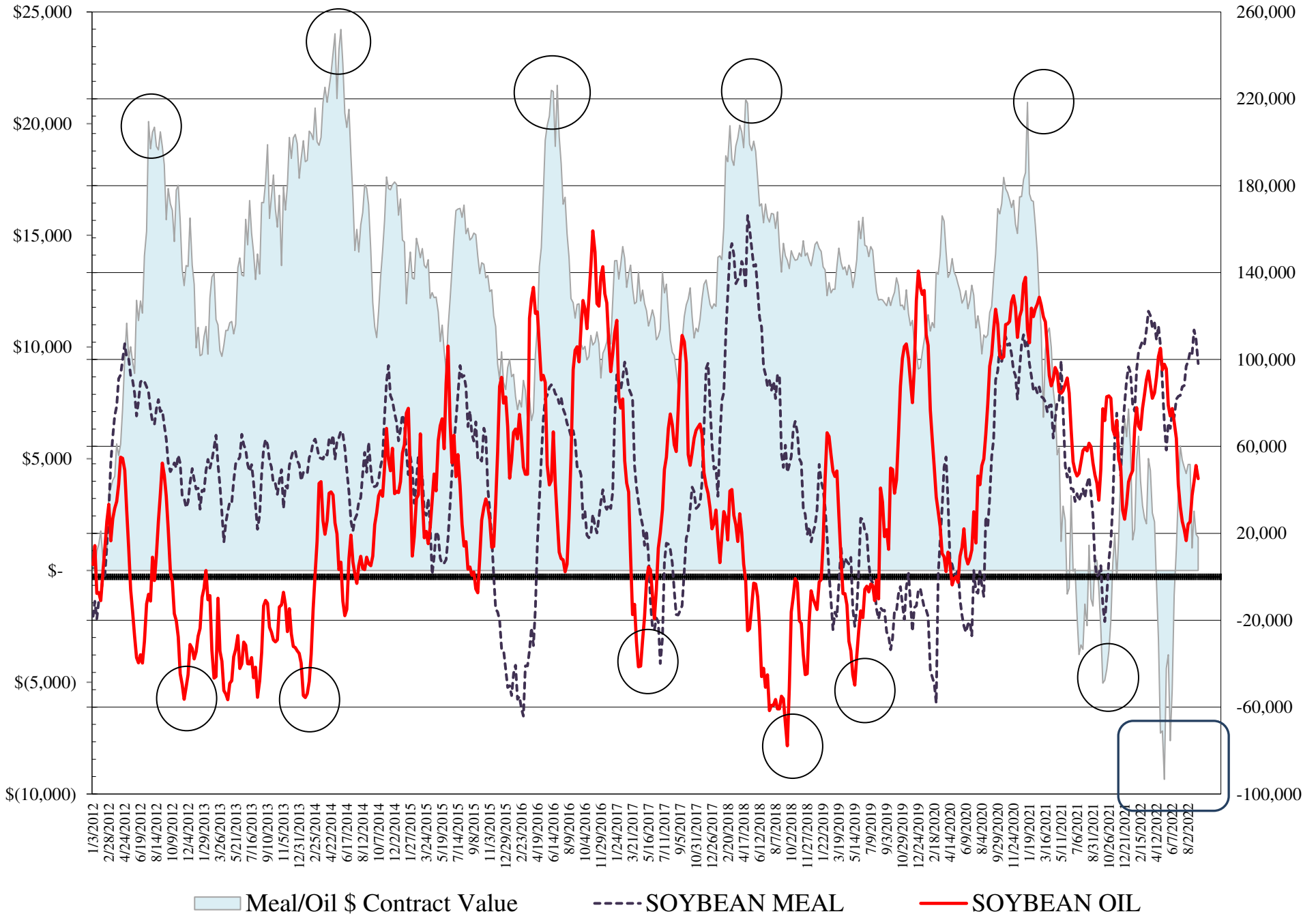
**COMMITMENT OF TRADERS  
FUTURES & OPTIONS NET POSITIONS  
AS OF 09/06/2022  
(IN THOUSAND CONTRACTS)**

	COMMERCIAL				(FUND) NON COMMERCIAL				(SPEC) NON-REPORTABLE			
	6-Sep	30-Aug	23-Aug	16-Aug	6-Sep	30-Aug	23-Aug	16-Aug	6-Sep	30-Aug	23-Aug	16-Aug
<b>WHEAT</b>												
Chicago	12.8	13.5	20.3	17.9	-10.2	-11.3	-17.5	-13.5	-2.6	-2.2	-2.8	-4.4
Kansas City	-8.1	-7.6	-5.6	-3.0	8.2	8.6	5.5	2.5	-0.1	-1.0	0.1	0.5
Minneapolis	-0.3	0.4	1.7	0.8	2.3	1.4	1.0	1.8	-2.0	-1.8	-2.7	-2.6
All Wheat	4.4	6.3	16.4	15.8	0.3	-1.3	-11.0	-9.3	-4.7	-5.0	-5.4	-6.5
<b>CORN</b>	-223.4	-219.7	-191.5	-141.8	278.3	276.6	247.0	197.7	-55.0	-56.9	-55.6	-55.9
OATS	-0.4	-0.3	#VALUE!	#VALUE!	-0.1	0.0	#VALUE!	#VALUE!	0.5	0.3	#VALUE!	#VALUE!
<b>SOYBEANS</b>	-50.1	-55.0	-62.6	-50.1	86.4	90.9	95.2	87.4	-36.3	-35.9	-32.6	-37.3
SOY OIL	-52.1	-60.6	-53.6	-44.1	45.1	51.2	43.8	37.5	7.0	9.3	9.8	6.6
SOY MEAL	-119.2	-132.8	-139.4	-128.1	98.1	109.4	113.6	102.4	21.1	23.4	25.8	25.7

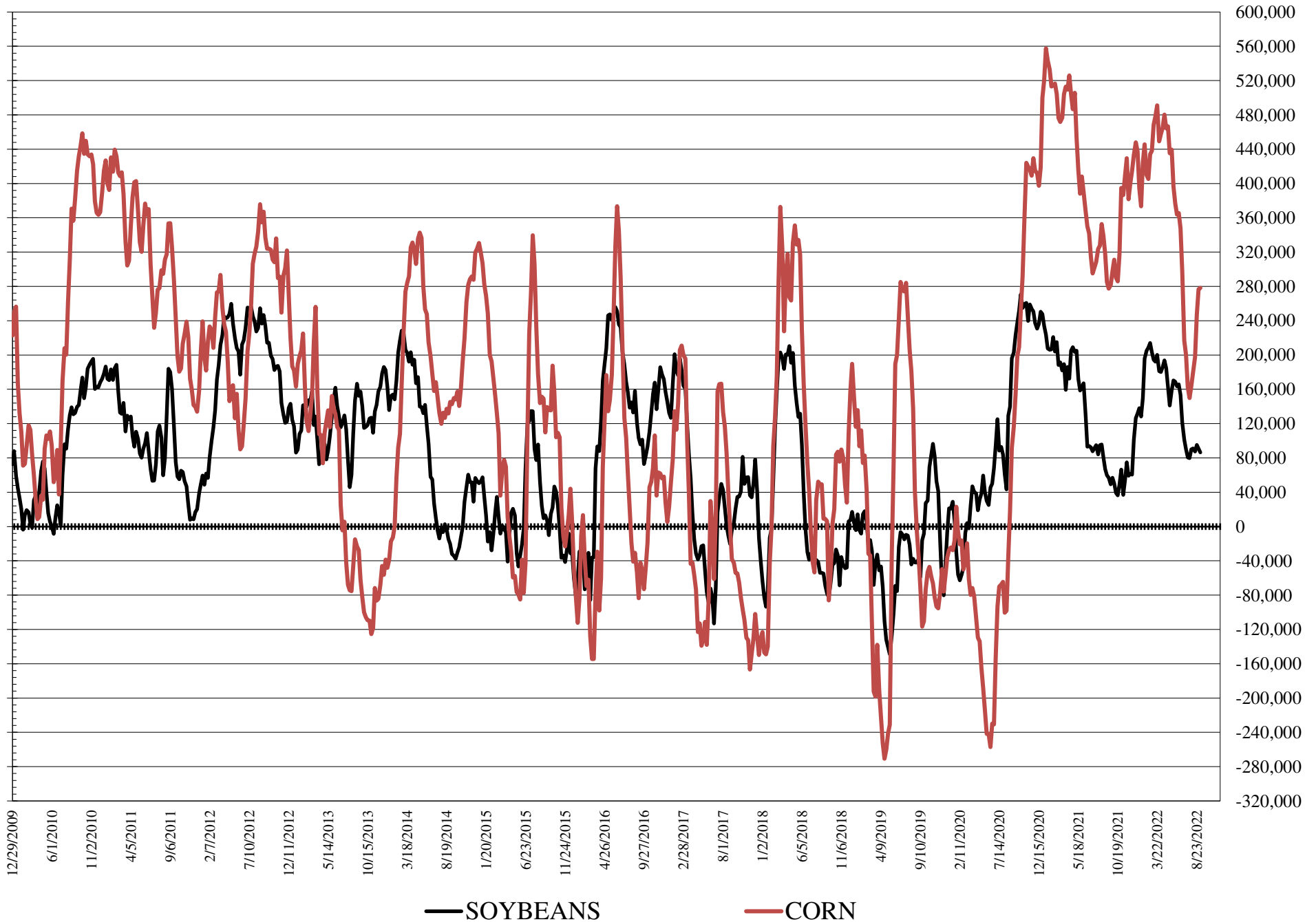
	TOTAL OPEN INTEREST				COMMERCIALS		% HELD BY TRADERS LARGE (FUNDS)		SMALL (NON-REP)	
	6-Sep	30-Aug	23-Aug	16-Aug	LONG	SHORT	LONG	SHORT	LONG	SHORT
<b>WHEAT</b>										
Chicago	363,699	362,465	432,194	420,327	38%	35%	23%	26%	9%	10%
Kansas City	160,602	159,411	176,942	174,537	45%	50%	27%	22%	13%	13%
Minneapolis	47,914	47,123	57,943	60,173	59%	60%	14%	10%	17%	22%
<b>CORN</b>	1,730,634	1,716,908	1,848,801	1,803,247	40%	53%	21%	5%	9%	13%
OATS	3,618	3,377	#VALUE!	#VALUE!						
<b>SOYBEANS</b>	741,820	741,434	789,452	756,272	49%	55%	20%	8%	6%	11%
SOY OIL	439,474	439,383	472,042	462,872	50%	62%	18%	7%	8%	6%
SOY MEAL	431,875	435,028	474,763	462,717	43%	70%	27%	5%	11%	7%

SOURCE: CFTC & FI

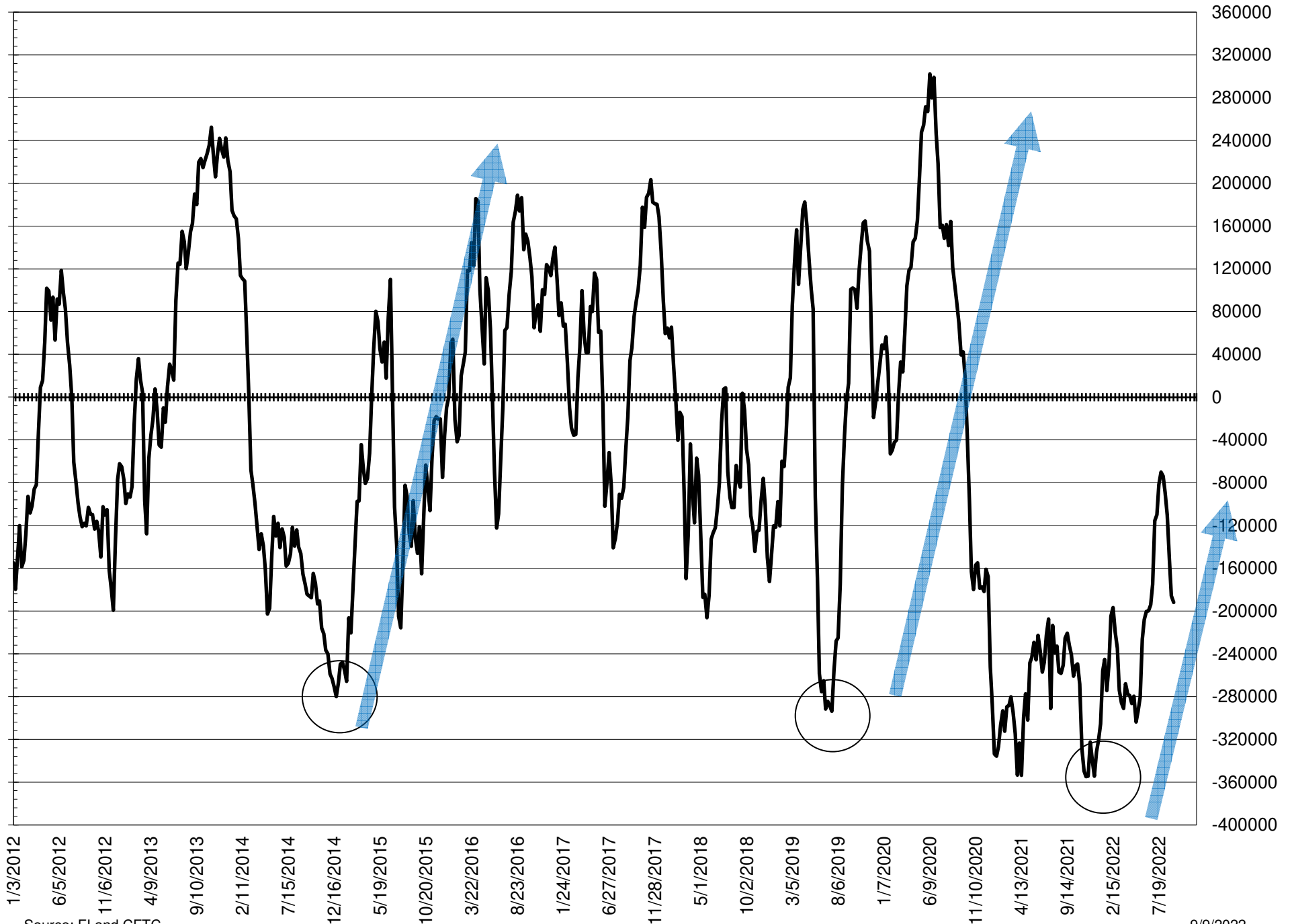
# NET POSITION FUTURES AND OPTIONS OF LARGE SPECULATORS IN SOYBEAN MEAL AND SOYBEAN OIL



# NET POSITION FUTURES AND OPTIONS OF LARGE SPECULATORS IN SOYBEANS AND CORN



# NET POSITION FUTURES AND OPTIONS SPREAD OF LARGE SPECULATORS IN SOYBEANS MINUS CORN



Source: FI and CFTC

9/9/2022

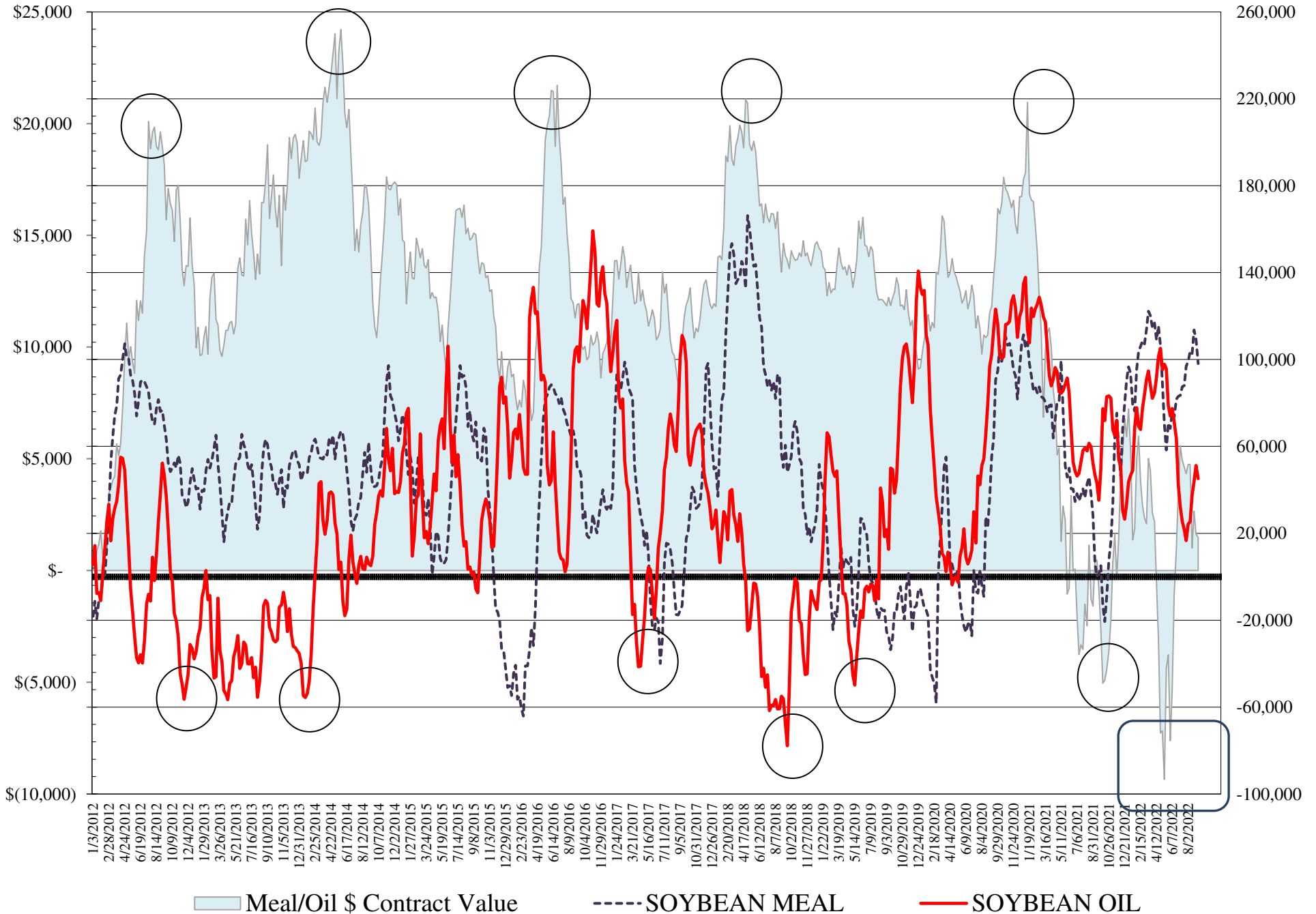
**COMMITMENT OF TRADERS  
FUTURES & OPTIONS NET POSITIONS  
AS OF 09/06/2022  
(IN THOUSAND CONTRACTS)**

	<b>COMMERCIAL</b>				<b>(FUND) NON COMMERCIAL</b>				<b>(SPEC) NON-REPORTABLE</b>			
	<b>6-Sep</b>	<b>30-Aug</b>	<b>23-Aug</b>	<b>16-Aug</b>	<b>6-Sep</b>	<b>30-Aug</b>	<b>23-Aug</b>	<b>16-Aug</b>	<b>6-Sep</b>	<b>30-Aug</b>	<b>23-Aug</b>	<b>16-Aug</b>
<b>WHEAT</b>												
Chicago	12.8	13.5	20.3	17.9	-10.2	-11.3	-17.5	-13.5	-2.6	-2.2	-2.8	-4.4
Kansas City	-8.1	-7.6	-5.6	-3.0	8.2	8.6	5.5	2.5	-0.1	-1.0	0.1	0.5
Minneapolis	-0.3	0.4	1.7	0.8	2.3	1.4	1.0	1.8	-2.0	-1.8	-2.7	-2.6
All Wheat	4.4	6.3	16.4	15.8	0.3	-1.3	-11.0	-9.3	-4.7	-5.0	-5.4	-6.5
<b>CORN</b>	-223.4	-219.7	-191.5	-141.8	278.3	276.6	247.0	197.7	-55.0	-56.9	-55.6	-55.9
<b>OATS</b>	-0.4	-0.3	#VALUE!	#VALUE!	-0.1	0.0	#VALUE!	#VALUE!	0.5	0.3	#VALUE!	#VALUE!
<b>SOYBEANS</b>	-50.1	-55.0	-62.6	-50.1	86.4	90.9	95.2	87.4	-36.3	-35.9	-32.6	-37.3
<b>SOY OIL</b>	-52.1	-60.6	-53.6	-44.1	45.1	51.2	43.8	37.5	7.0	9.3	9.8	6.6
<b>SOY MEAL</b>	-119.2	-132.8	-139.4	-128.1	98.1	109.4	113.6	102.4	21.1	23.4	25.8	25.7

	<b>TOTAL OPEN INTEREST</b>				<b>COMMERCIALS</b>		<b>% HELD BY TRADERS LARGE (FUNDS)</b>		<b>SMALL (NON-REP)</b>	
	<b>6-Sep</b>	<b>30-Aug</b>	<b>23-Aug</b>	<b>16-Aug</b>	<b>LONG</b>	<b>SHORT</b>	<b>LONG</b>	<b>SHORT</b>	<b>LONG</b>	<b>SHORT</b>
<b>WHEAT</b>										
Chicago	363,699	362,465	432,194	420,327	38%	35%	23%	26%	9%	10%
Kansas City	160,602	159,411	176,942	174,537	45%	50%	27%	22%	13%	13%
Minneapolis	47,914	47,123	57,943	60,173	59%	60%	14%	10%	17%	22%
<b>CORN</b>	1,730,634	1,716,908	1,848,801	1,803,247	40%	53%	21%	5%	9%	13%
<b>OATS</b>	3,618	3,377	#VALUE!	#VALUE!						
<b>SOYBEANS</b>	741,820	741,434	789,452	756,272	49%	55%	20%	8%	6%	11%
<b>SOY OIL</b>	439,474	439,383	472,042	462,872	50%	62%	18%	7%	8%	6%
<b>SOY MEAL</b>	431,875	435,028	474,763	462,717	43%	70%	27%	5%	11%	7%

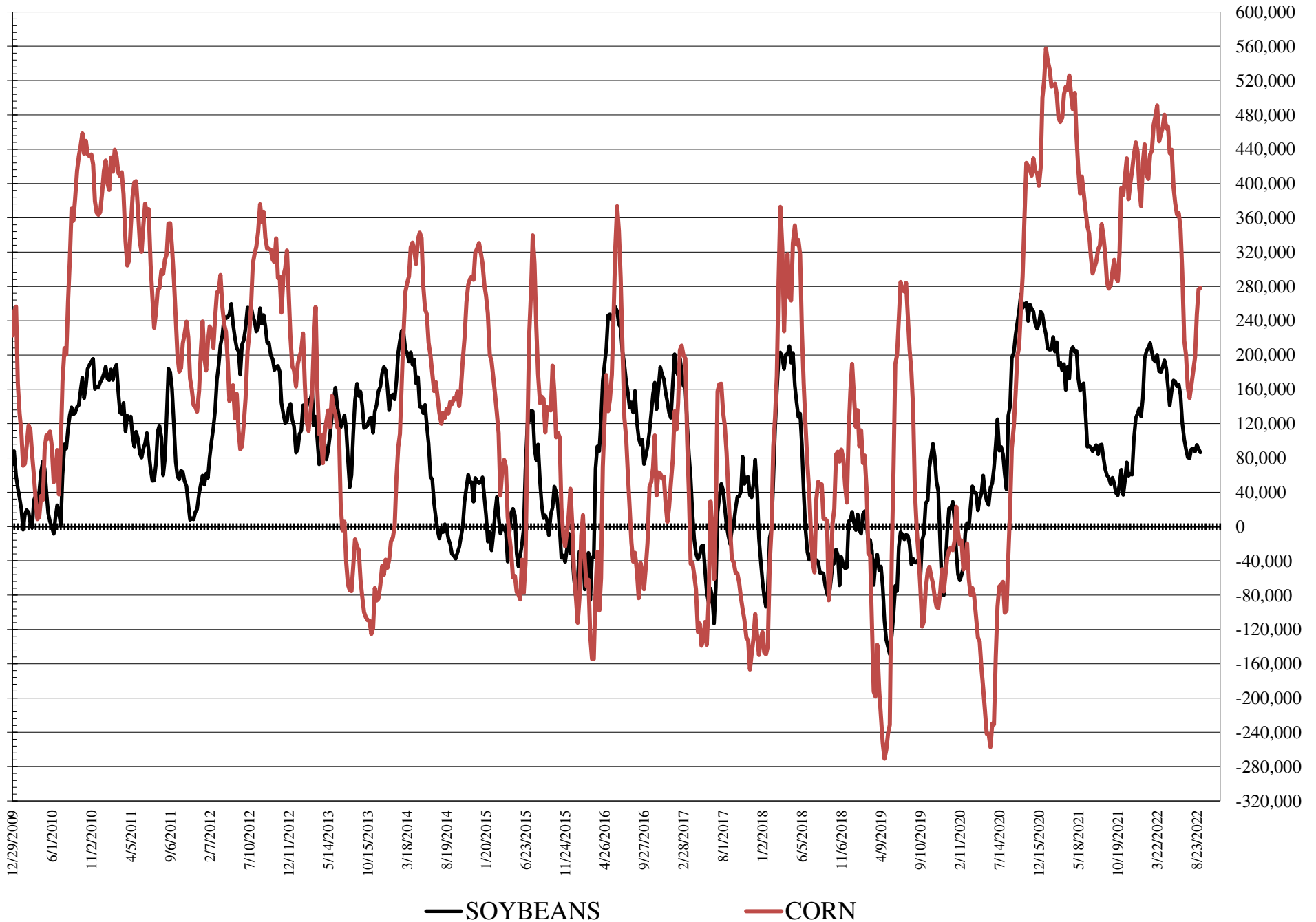
SOURCE: CFTC & FI

# NET POSITION FUTURES AND OPTIONS OF LARGE SPECULATORS IN SOYBEAN MEAL AND SOYBEAN OIL

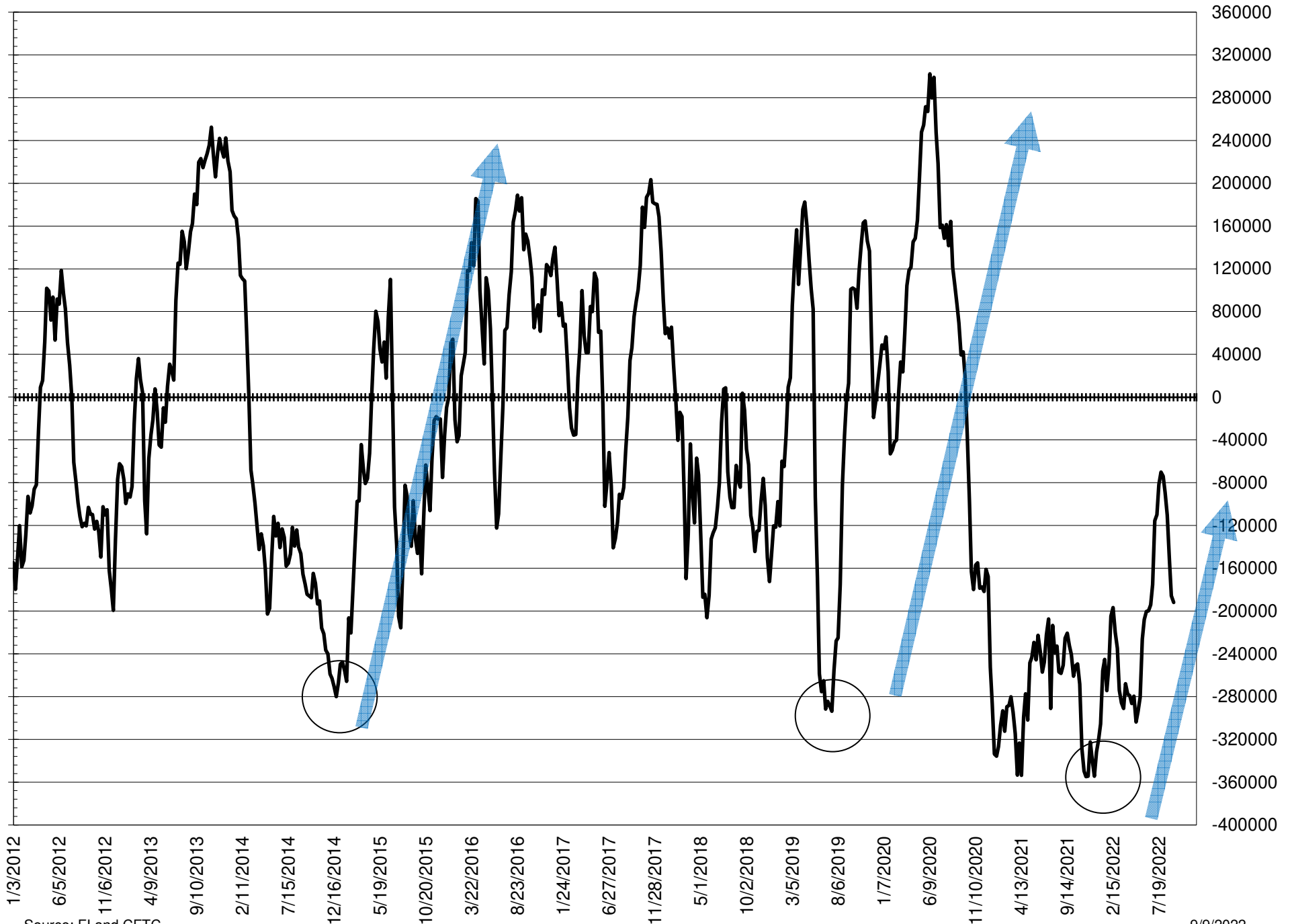




# NET POSITION FUTURES AND OPTIONS OF LARGE SPECULATORS IN SOYBEANS AND CORN



# NET POSITION FUTURES AND OPTIONS SPREAD OF LARGE SPECULATORS IN SOYBEANS MINUS CORN



Source: FI and CFTC

9/9/2022

**DISAGGREGATED COMMITMENT OF TRADERS  
FUTURES ONLY NET POSITIONS  
AS OF 09/06/2022  
(IN THOUSAND CONTRACTS)**

	PRODUCER / MERCHANT / PROCESSOR / USER				(INDEX/ETF) SWAP DEALERS				(CTA/CPO/OTHER UNREGISTERED) MANAGED MONEY			
	6-Sep	30-Aug	23-Aug	16-Aug	6-Sep	30-Aug	23-Aug	16-Aug	6-Sep	30-Aug	23-Aug	16-Aug
	WHEAT											
Chicago	(48.9)	(46.8)	(46.4)	(52.7)	62.6	61.8	58.8	60.2	(23.4)	(23.9)	(29.2)	(21.8)
Kansas City	(35.4)	(35.0)	(36.9)	(33.1)	27.9	27.9	30.7	29.9	11.1	12.4	8.8	7.2
Minneapolis	(1.9)	(1.6)	(0.6)	(1.7)	1.4	1.6	1.5	1.7	(1.0)	(1.4)	(1.5)	(0.8)
All Wheat	(86.2)	(83.5)	(83.9)	(87.6)	91.8	91.2	90.9	91.7	(13.4)	(13.0)	(21.9)	(15.4)
CORN	(468.7)	(461.4)	(446.8)	(409.8)	238.0	235.7	240.0	243.5	210.2	205.2	175.5	142.6
OATS	(0.6)	(0.5)	-	-	0.2	0.1	-	-	(0.6)	(0.4)	-	-
SOYBEANS	(133.8)	(137.1)	(142.3)	(139.2)	83.0	84.3	83.9	87.5	99.6	104.1	111.3	101.5
SOY OIL	(141.6)	(146.8)	(138.4)	(129.9)	86.4	84.1	82.9	83.2	43.7	48.7	42.4	33.5
SOY MEAL	(213.3)	(225.2)	(229.6)	(223.6)	86.6	87.4	88.4	87.8	81.2	92.3	93.3	85.7

Managed % of OI				
Chicago W	-8%	-8%	-9%	-7%
Corn	16%	16%	13%	11%

	TOTAL OPEN INTEREST				OTHER REPORTABLE				NON REPORTABLE			
	6-Sep	30-Aug	23-Aug	16-Aug	6-Sep	30-Aug	23-Aug	16-Aug	6-Sep	30-Aug	23-Aug	16-Aug
	WHEAT											
Chicago	289,329	288,545	320,495	313,237	13.7	12.4	21.0	19.9	(3.9)	(3.4)	(4.1)	(5.5)
Kansas City	146,259	145,155	157,509	156,392	(3.0)	(3.9)	(2.0)	(3.8)	(0.5)	(1.3)	(0.6)	(0.2)
Minneapolis	45,971	45,136	54,693	56,844	3.5	3.3	3.4	3.4	(2.0)	(1.8)	(2.8)	(2.6)
All Wheat	481,559	478,836	532,697	526,473	14.3	11.8	22.4	19.6	(6.5)	(6.6)	(7.5)	(8.4)
CORN	1,280,087	1,267,735	1,312,958	1,316,462	76.3	78.2	87.7	77.5	(55.8)	(57.6)	(56.4)	(53.8)
OATS	3,489	3,238	-	-	0.6	0.6	-	-	0.5	0.2	-	-
SOYBEANS	606,187	605,924	611,218	595,095	(18.3)	(20.6)	(23.5)	(18.3)	(30.4)	(30.8)	(29.5)	(31.5)
SOY OIL	393,510	390,796	407,225	401,326	5.1	5.3	4.2	7.5	6.4	8.8	8.9	5.8
SOY MEAL	389,152	391,177	421,420	414,099	25.9	23.9	24.2	26.5	19.5	21.6	23.7	23.7

SOURCE: CFTC & FI

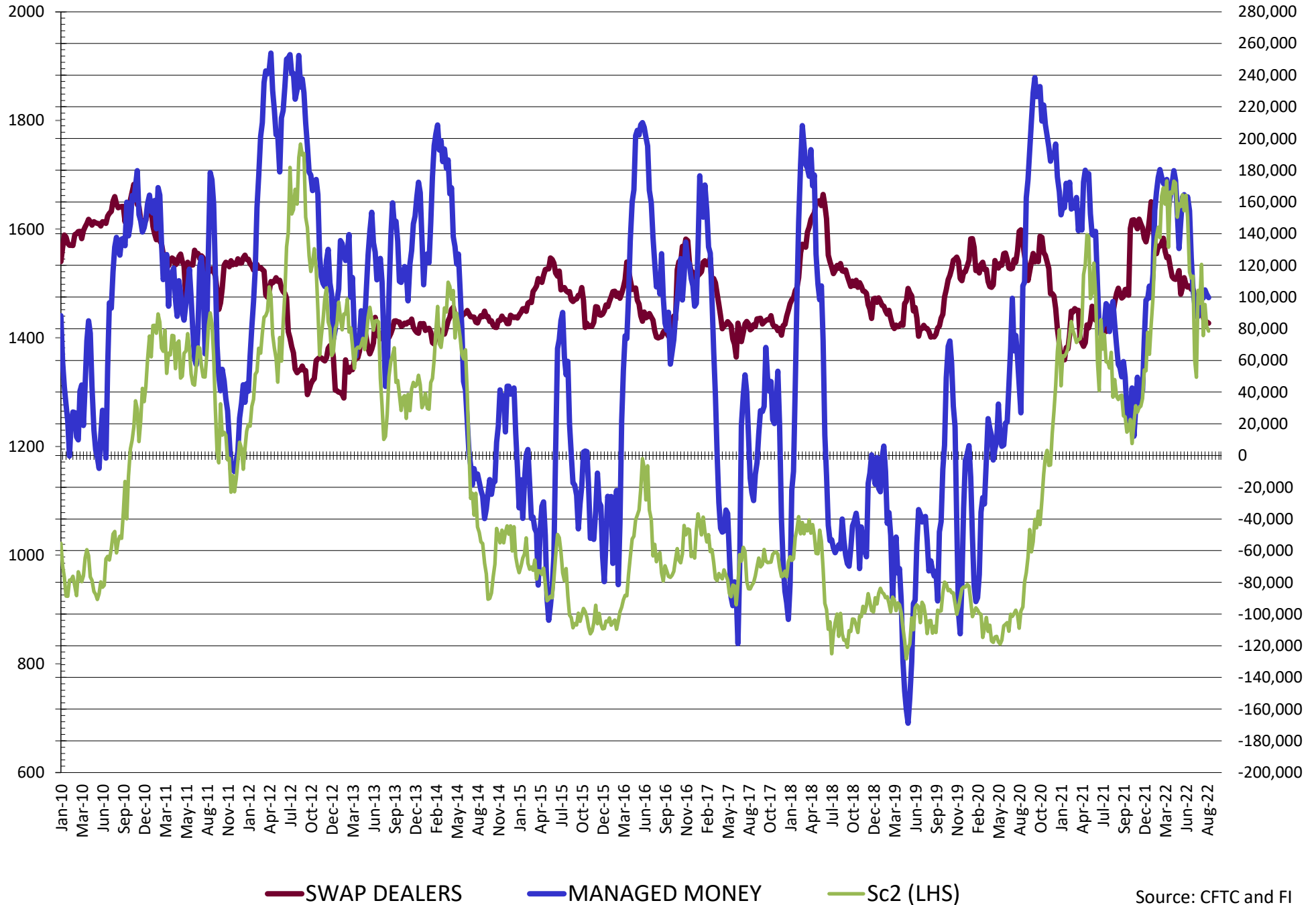
**DISAGGREGATED COMMITMENT OF TRADERS  
FUTURES & OPTIONS NET POSITIONS  
AS OF 09/06/2022  
(IN THOUSAND CONTRACTS)**

	PRODUCER / MERCHANT / PROCESSOR / USER				(INDEX/ETF) SWAP DEALERS				(CTA/CPO/OTHER UNREGISTERED) MANAGED MONEY			
	6-Sep	30-Aug	23-Aug	16-Aug	6-Sep	30-Aug	23-Aug	16-Aug	6-Sep	30-Aug	23-Aug	16-Aug
	WHEAT											
Chicago	(53.9)	(52.1)	(47.5)	(51.9)	66.6	65.6	67.8	69.8	(21.4)	(22.2)	(26.1)	(18.1)
Kansas City	(36.0)	(35.4)	(36.0)	(32.6)	27.8	27.8	30.4	29.7	11.1	12.5	9.4	7.5
Minneapolis	(1.8)	(1.3)	0.2	(0.9)	1.6	1.7	1.5	1.7	(1.0)	(1.4)	(1.5)	(0.8)
All Wheat	(91.6)	(88.8)	(83.3)	(85.4)	96.0	95.1	99.7	101.1	(11.4)	(11.2)	(18.1)	(11.3)
CORN	(456.5)	(450.0)	(428.4)	(383.5)	233.2	230.3	236.9	241.7	226.5	221.5	182.2	153.8
OATS	(0.5)	(0.5)	0.0	0.0	0.2	0.1	0.0	0.0	(0.6)	(0.4)	0.0	0.0
SOYBEANS	(133.6)	(139.3)	(145.9)	(137.4)	83.5	84.3	83.4	87.3	99.6	101.8	104.5	99.3
SOY OIL	(140.4)	(146.5)	(138.9)	(129.7)	88.3	86.0	85.3	85.6	44.0	49.2	42.2	33.2
SOY MEAL	(207.5)	(221.4)	(228.3)	(217.1)	88.3	88.6	88.9	89.0	81.6	93.6	95.7	86.3

	TOTAL OPEN INTEREST				OTHER REPORTABLE				NON REPORTABLE			
	6-Sep	30-Aug	23-Aug	16-Aug	6-Sep	30-Aug	23-Aug	16-Aug	6-Sep	30-Aug	23-Aug	16-Aug
	WHEAT											
Chicago	363,699	362,465	432,194	420,327	11.3	11.0	8.6	4.6	(2.6)	(2.2)	(2.8)	(4.4)
Kansas City	160,602	159,411	176,942	174,537	(2.9)	(3.9)	(4.0)	(5.0)	(0.1)	(1.0)	0.1	0.5
Minneapolis	47,914	47,123	57,943	60,173	3.3	2.9	2.5	2.5	(2.0)	(1.8)	(2.7)	(2.6)
All Wheat	572,215	568,999	667,079	655,037	11.7	9.9	7.1	2.1	(4.7)	(5.0)	(5.4)	(6.5)
CORN	1,730,634	1,716,908	1,848,801	1,803,247	51.8	55.1	64.8	43.9	(55.0)	(56.9)	(56.9)	(56.9)
OATS	3,618	3,377	0	0	0.5	0.5	0.0	0.0	0.5	0.3	0.0	0.0
SOYBEANS	741,820	741,434	789,452	756,272	(13.2)	(10.9)	(9.3)	(11.9)	(36.3)	(35.9)	(32.6)	(37.3)
SOY OIL	439,474	439,383	472,042	462,872	1.2	2.0	1.6	4.2	7.0	9.3	9.8	6.6
SOY MEAL	431,875	435,028	474,763	462,717	16.5	15.7	17.9	16.1	21.1	23.4	25.8	25.7

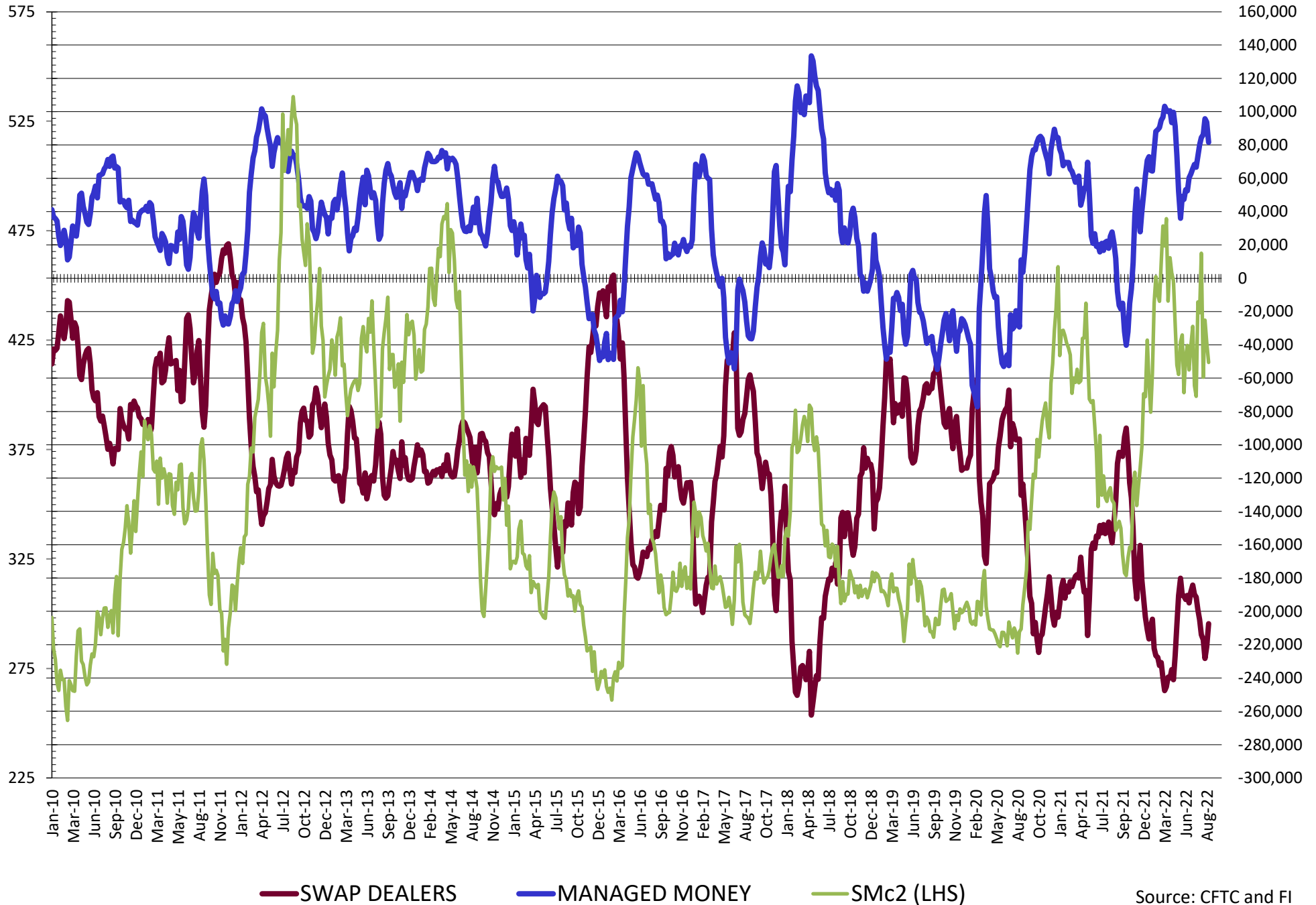
SOURCE: CFTC & FI

# NET POSITION FUTURES AND OPTIONS OF SWAP AND MANAGED FUNDS IN SOYBEANS

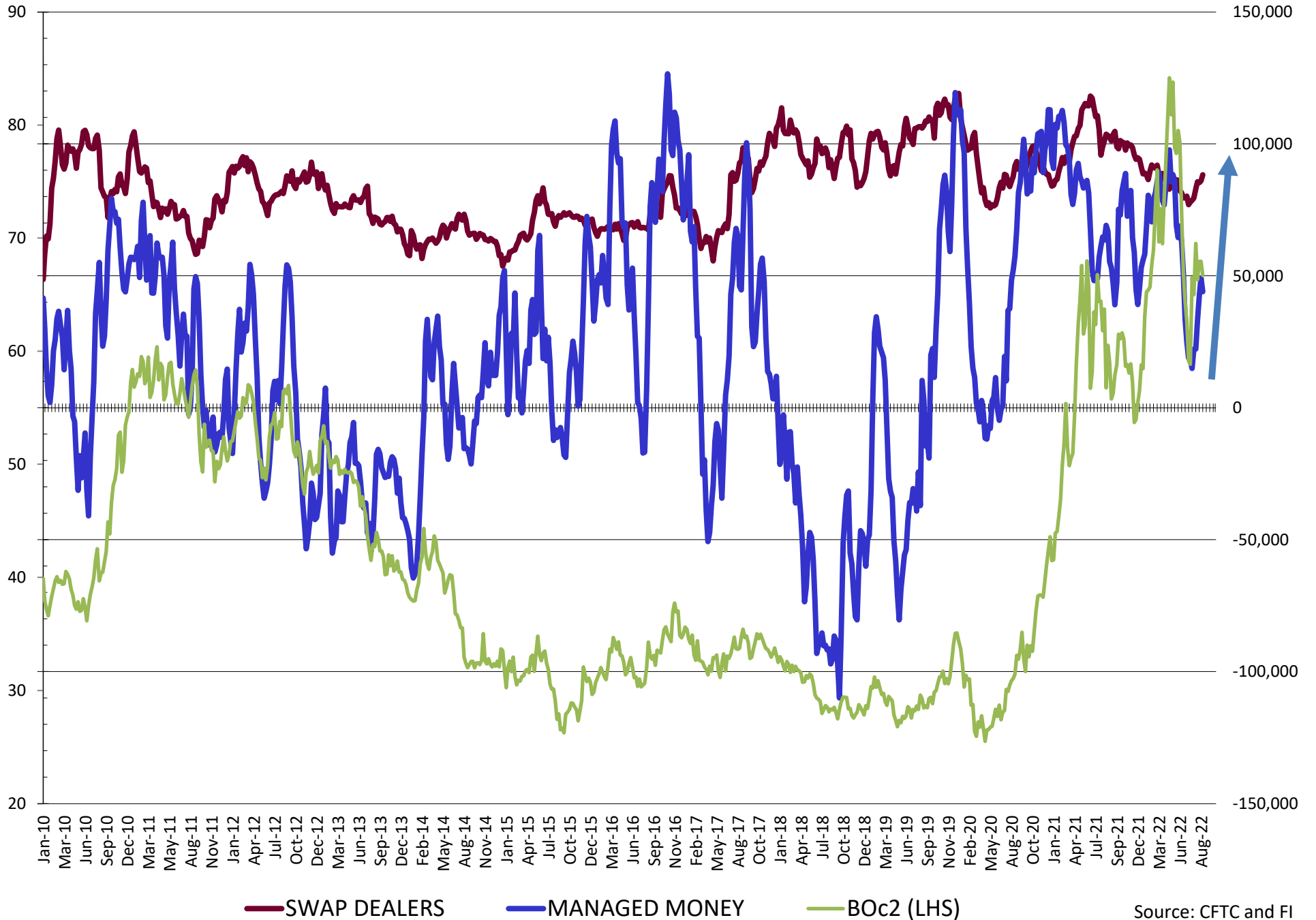


Source: CFTC and FI  
9/9/2022

# NET POSITION FUTURES AND OPTIONS OF SWAP AND MANAGED FUNDS IN SOYBEAN MEAL

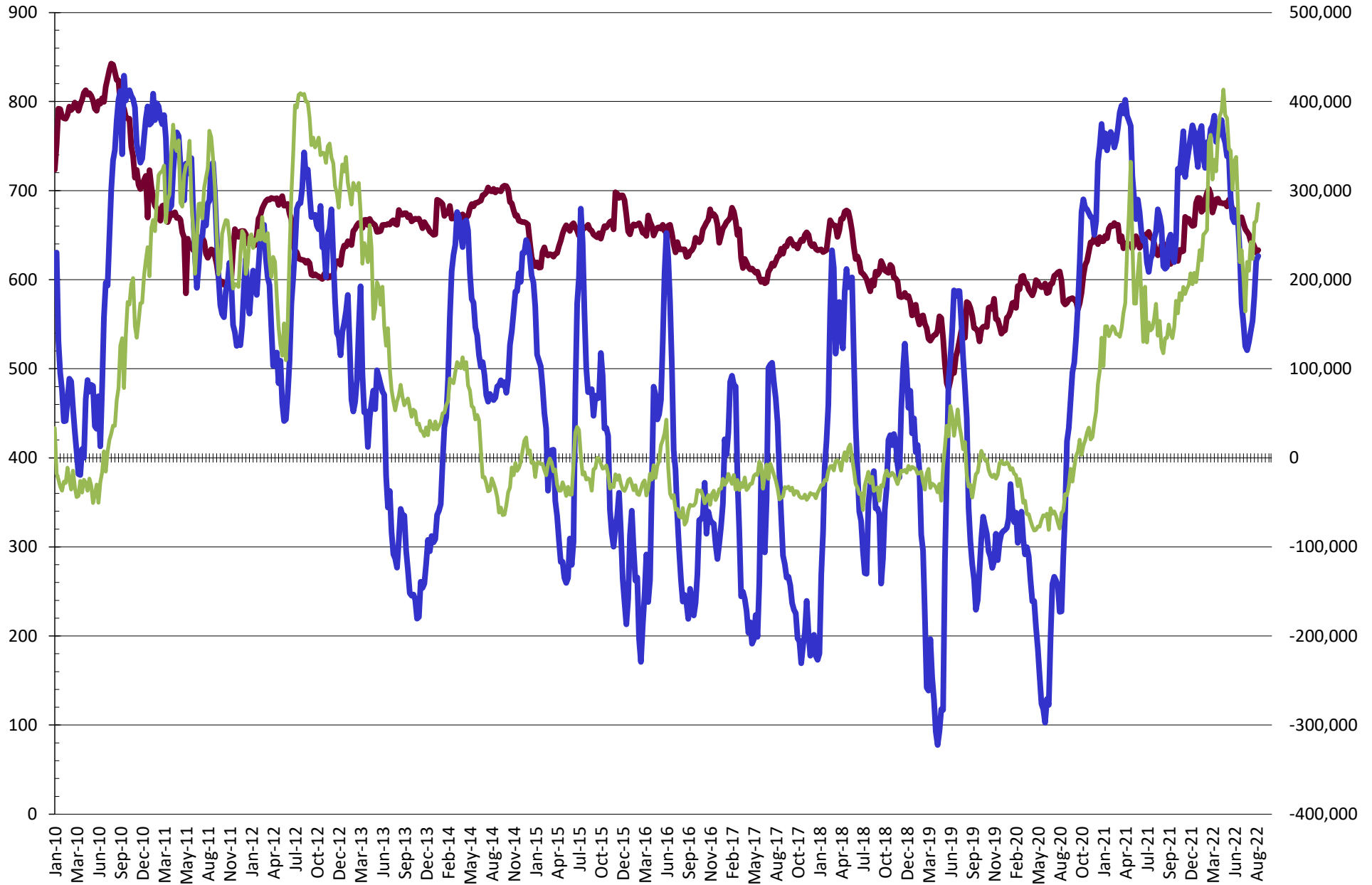


# NET POSITION FUTURES AND OPTIONS OF SWAP AND MANAGED FUNDS IN SOYBEAN OIL



Source: CFTC and FI  
9/9/2022

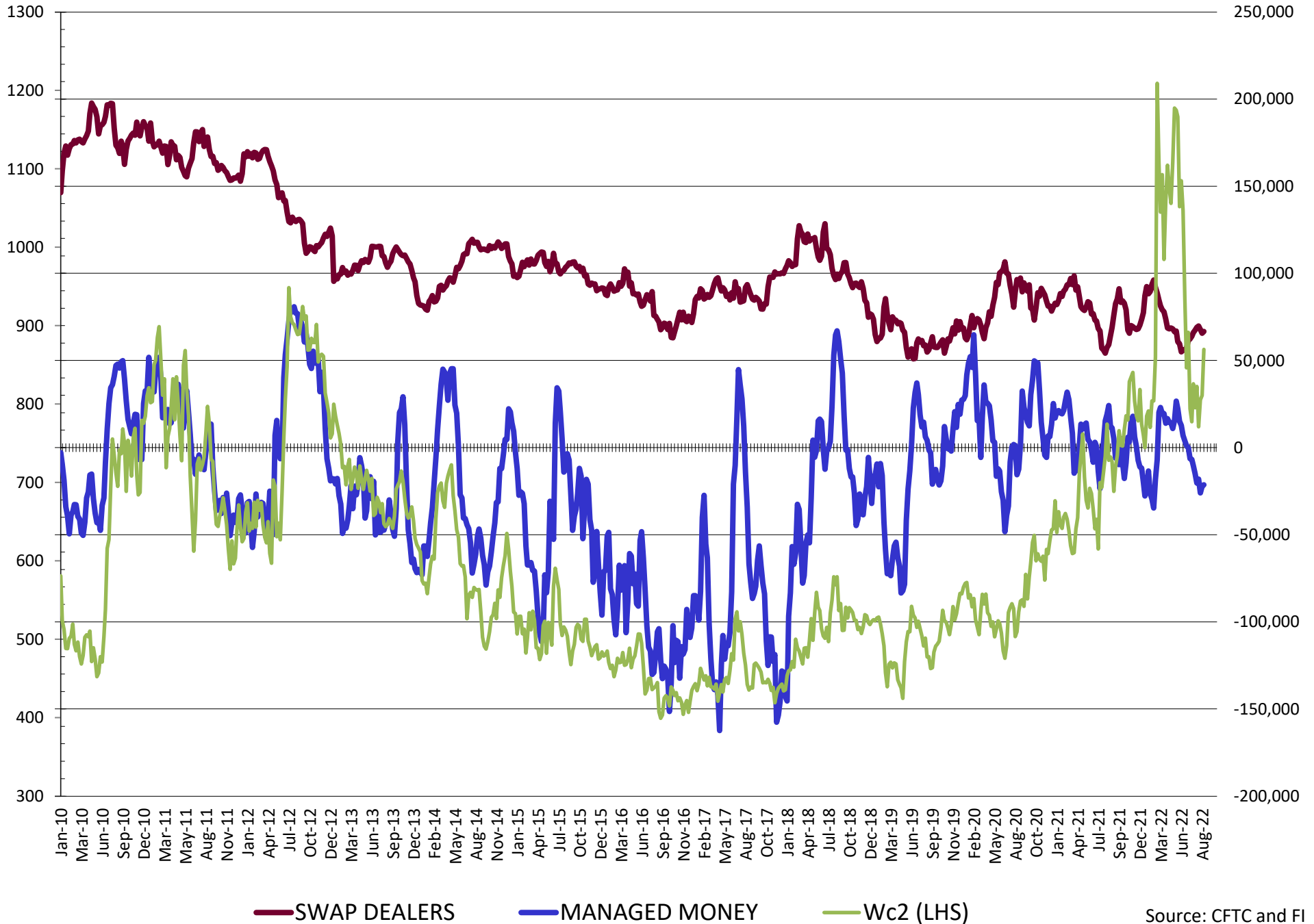
# NET POSITION FUTURES AND OPTIONS OF SWAP AND MANAGED FUNDS IN CORN



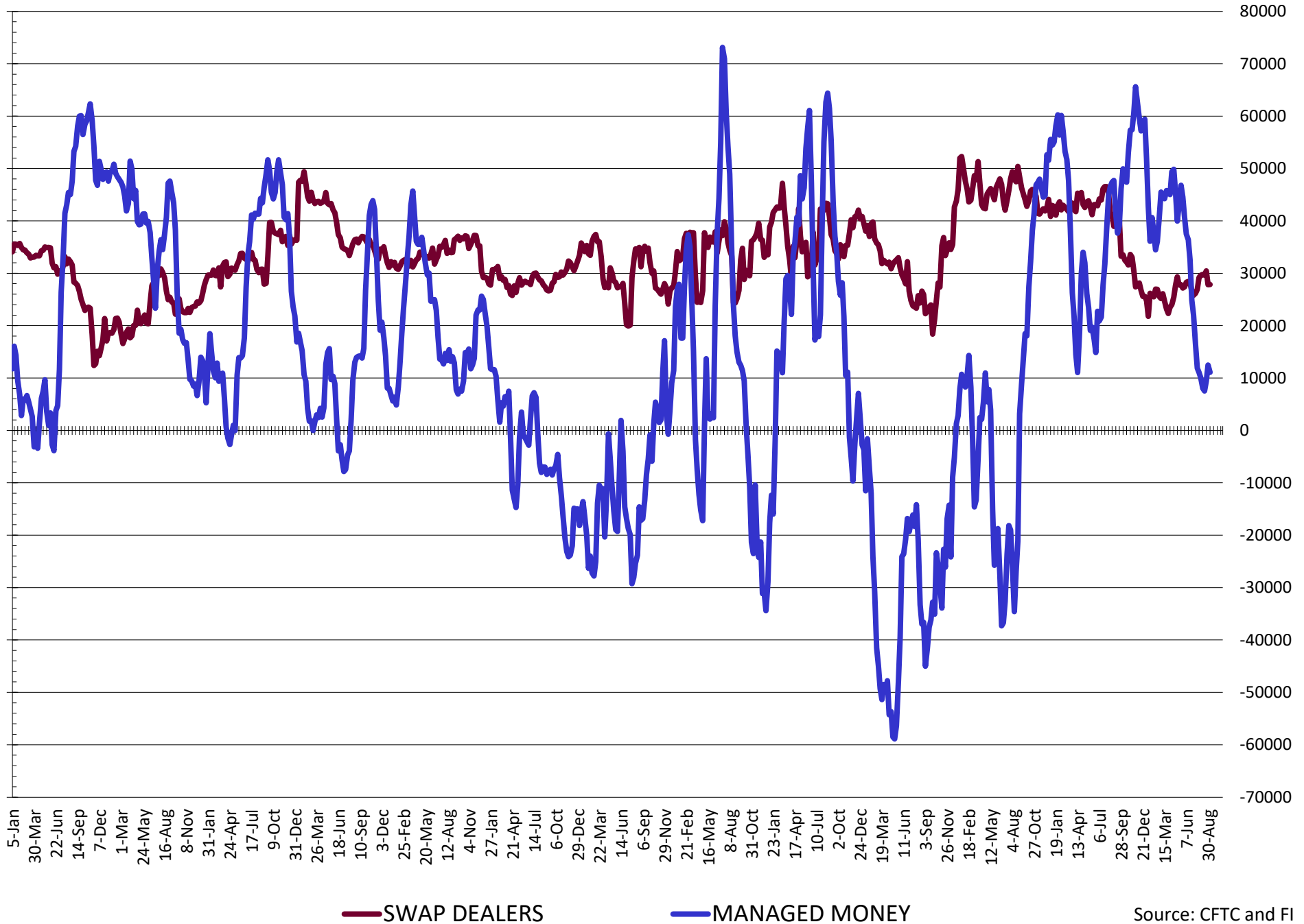
— SWAP DEALERS     
 — MANAGED MONEY     
 — Cc2 (LHS)



# NET POSITION FUTURES AND OPTIONS OF SWAP AND MANAGED FUNDS IN CHICAGO WHEAT

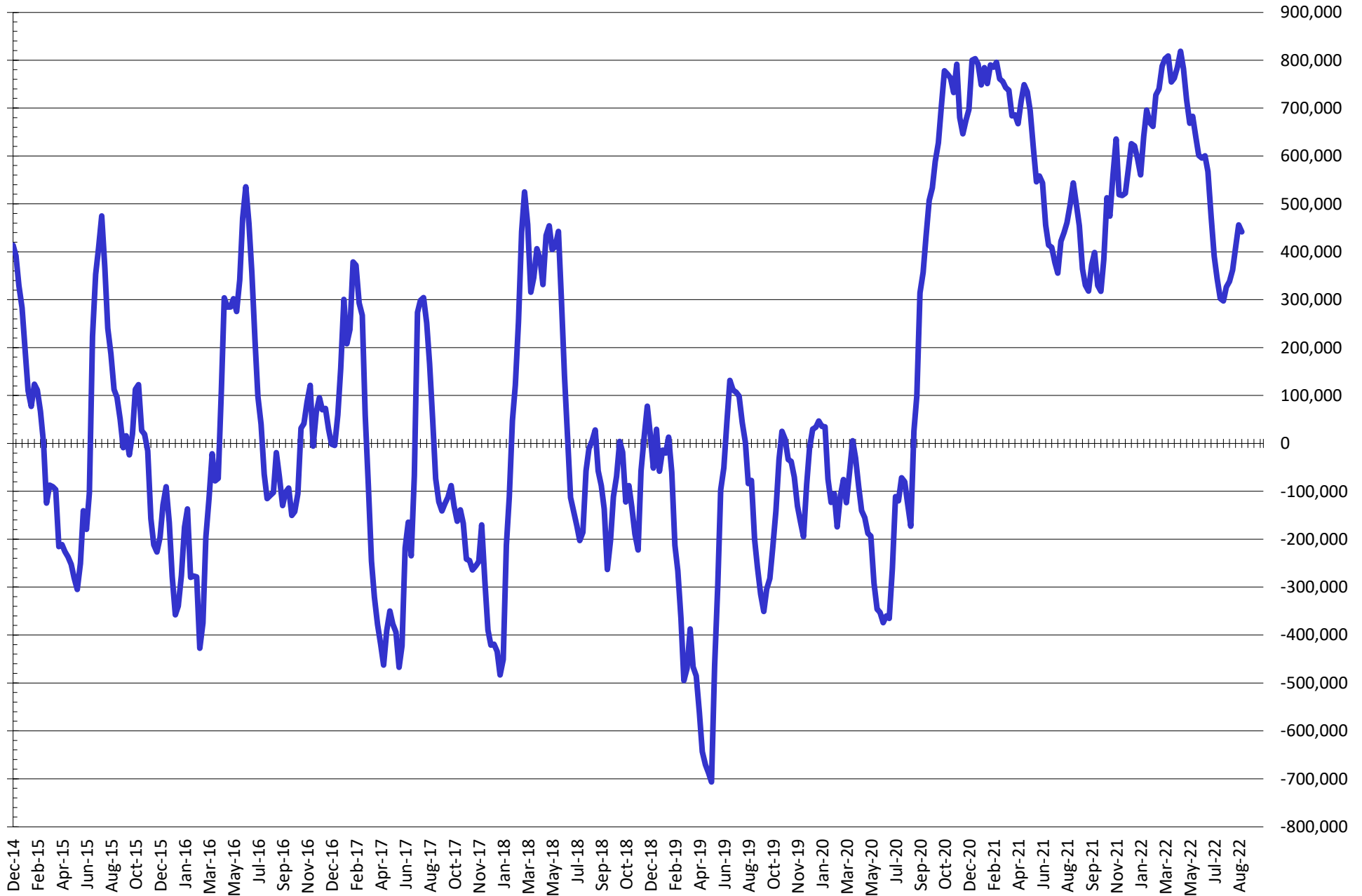


# NET POSITION FUTURES AND OPTIONS OF SWAP AND MANAGED FUNDS IN KANSAS WHEAT



Source: CFTC and FI  
9/9/2022

# NET POSITION FUTURES AND OPTIONS OF SWAP AND MANAGED FUNDS IN COMBINED SRW, HRW, CORN, SOYBEANS, SOYMEAL AND SOYOIL



— Net Managed Money

Source: CFTC and FI  
9/9/2022

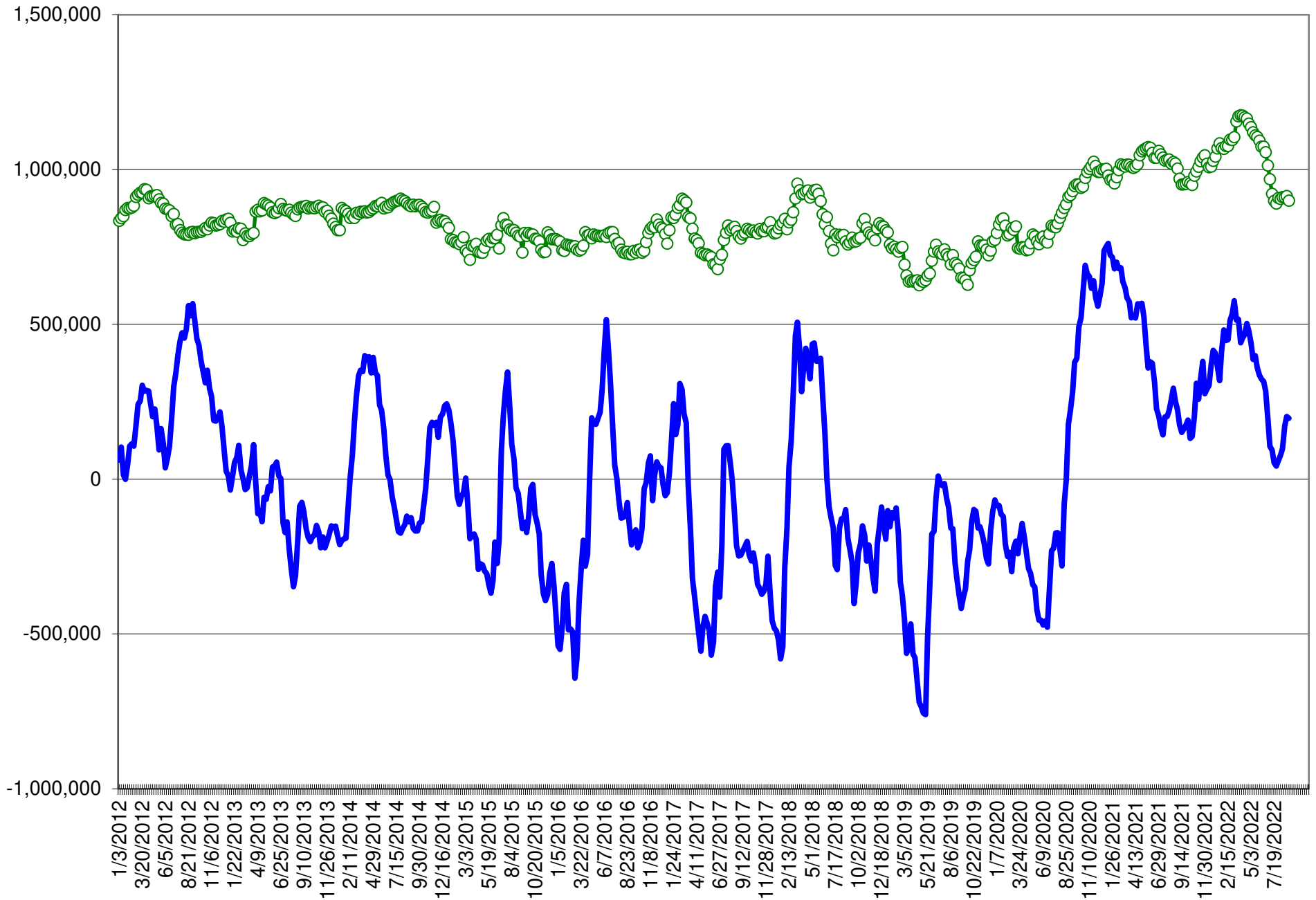
**COMMITMENT OF TRADERS**  
**FUTURES & OPTIONS NET POSITIONS (INDEX BROKEN OUT)**  
**AS OF 09/06/2022**  
(IN THOUSAND CONTRACTS)

	COMMERCIAL				(FUND) NON COMMERCIAL				(SPEC) NON-REPORTABLE			
	6-Sep	30-Aug	23-Aug	16-Aug	6-Sep	30-Aug	23-Aug	16-Aug	6-Sep	30-Aug	23-Aug	16-Aug
	WHEAT											
Chicago	(61.4)	(60.0)	(54.6)	(58.2)	(52.0)	(56.0)	(60.6)	(56.0)	(2.6)	(2.2)	(2.8)	(4.4)
Kansas City	(41.8)	(41.8)	(39.4)	(36.5)	(9.2)	(9.2)	(11.7)	(14.9)	(0.1)	(1.0)	0.1	0.5
Minneapolis	-	-	-	-	-	-	-	-	-	-	-	-
All Wheat	(103.2)	(101.8)	(94.0)	(94.8)	(61.2)	(65.1)	(72.3)	(70.9)	(2.7)	(3.2)	(2.7)	(3.9)
CORN	(469.9)	(466.1)	(439.2)	(387.2)	153.0	147.1	120.9	70.7	(55.0)	(56.9)	(55.6)	(55.9)
OATS	-	-	-	-	-	-	-	-	-	-	-	-
SOYBEANS	(136.6)	(141.7)	(149.8)	(138.7)	33.4	33.5	39.1	32.0	(36.3)	(35.9)	(32.6)	(37.3)
SOY OIL	(122.5)	(131.0)	(124.1)	(114.8)	13.6	18.6	11.6	6.0	7.0	9.3	9.8	6.6
SOY MEAL	(197.7)	(212.6)	(219.8)	(208.2)	57.6	67.9	72.0	60.3	21.1	23.4	25.8	25.7

	TOTAL OPEN INTEREST				(INDEX) COMMERCIAL INDEX TRADERS				(INDEX) % NET OF TOTAL OPEN INTEREST			
	6-Sep	30-Aug	23-Aug	16-Aug	6-Sep	30-Aug	23-Aug	16-Aug	6-Sep	30-Aug	23-Aug	16-Aug
	WHEAT											
Chicago	363,699	362,465	432,194	420,327	116.0	118.1	118.0	118.6	31.9%	32.6%	27.3%	28.2%
Kansas City	160,602	159,411	176,942	174,537	51.1	51.9	51.0	51.0	31.8%	32.6%	28.8%	29.2%
Minneapolis	-	-	-	-	-	-	-	-	-	-	-	-
All Wheat	524,301	521,876	609,136	594,864	167.1	170.1	169.0	169.6	31.9%	32.6%	27.7%	28.5%
CORN	1,730,634	1,716,908	1,848,801	1,803,247	371.9	375.9	373.8	372.4	21.5%	21.9%	20.2%	20.7%
OATS	-	-	-	-	-	-	-	-	-	-	-	-
SOYBEANS	741,820	741,434	789,452	756,272	139.5	144.2	143.3	144.0	18.8%	19.4%	18.1%	19.0%
SOY OIL	439,474	439,383	472,042	462,872	101.9	103.1	102.7	102.2	23.2%	23.5%	21.8%	22.1%
SOY MEAL	431,875	435,028	474,763	462,717	119.0	121.4	122.1	122.2	27.5%	27.9%	25.7%	26.4%

SOURCE: CFTC & FI

# NET POSITION FUTURES AND OPTIONS OF SPECULATORS AND INDEX FUNDS IN COMBINED SRW, HRW, CORN, SOYBEANS, SOYMEAL AND SOYOIL



Source: CFTC and FI

○ Net Index

— Net Speculator

# CFTC COMMITMENT OF TRADERS REPORT

As of 9/6/2022

## TRADITIONAL FUNDS net position changes

Wed to Tue, in 000 contracts

	Corn	Bean	Meal	Oil	Chi. Wheat	KC Wheat	Min Wheat
Futures Only	3.2	(2.3)	(9.1)	(5.2)	1.7	(0.4)	0.6
Futures & Options Combined	1.8	(4.5)	(11.2)	(6.1)	1.1	(0.4)	0.8

## TRADITIONAL COMMERCIAL net position changes

	Corn	Bean	Meal	Oil	Chi. Wheat	KC Wheat	Min Wheat
Futures Only	(4.9)	2.0	11.2	7.6	(1.2)	(0.4)	(0.4)
Futures & Options Combined	(3.7)	4.9	13.6	8.4	(0.7)	(0.6)	(0.6)

## MANAGED MONEY net position changes

	Corn	Bean	Meal	Oil	Chi. Wheat	KC Wheat	Min Wheat
Futures Only	5.0	(4.6)	(11.1)	(5.0)	0.5	(1.4)	0.4
Futures & Options Combined	5.0	(2.2)	(12.0)	(5.2)	0.8	(1.4)	0.4

## SWAP DEALERS net position changes

	Corn	Bean	Meal	Oil	Chi. Wheat	KC Wheat	Min Wheat
Futures Only	2.3	(1.3)	(0.8)	2.3	0.8	0.0	(0.2)
Futures & Options Combined	2.9	(0.8)	(0.3)	2.3	1.1	0.0	(0.2)

## PRODUCERS/END USERS net position changes

	Corn	Bean	Meal	Oil	Chi. Wheat	KC Wheat	Min Wheat
Futures Only	(7.2)	3.3	12.0	5.2	(2.0)	(0.4)	(0.2)
Futures & Options Combined	(6.6)	5.7	13.9	6.1	(1.8)	(0.6)	(0.5)

## INDEX net position changes

	Corn	Bean	Meal	Oil	Chi. Wheat	KC Wheat	Min Wheat
Futures & Options Combined	(3.9)	(4.6)	(2.4)	(1.2)	(2.1)	(0.9)	NA

## SUPPLEMENTAL NON-COMMERCIAL net position changes

	Corn	Bean	Meal	Oil	Chi. Wheat	KC Wheat	Min Wheat
Futures & Options Combined	5.9	(0.1)	(10.3)	(4.9)	3.9	0.0	NA

## OPEN INTEREST net position changes

Wed to Tue, in 000 contracts

	Corn	Bean	Meal	Oil	Chi. Wheat	KC Wheat	Min Wheat
Futures Only	12.4	0.3	(2.0)	2.7	0.8	1.1	0.8
Futures & Options Combined	13.7	0.4	(3.2)	0.1	1.2	1.2	0.8

Source: CFTC and FI

Wed to Tue, in 000 contracts

# Disclaimer

TO CLIENTS/PROSPECTS OF FUTURES INTERNATIONAL, SEE RISK DISCLOSURE BELOW:

THIS COMMUNICATION IS CONVEYED AS A SOLICITATION FOR ENTERING INTO A DERIVATIVES TRANSACTION.

Any trading recommendations and market or other information to Customer by Futures International (FI), although based upon information obtained from sources believed by FI to be reliable may not be accurate and may be changed without notice to customer. FI makes no guarantee as to the accuracy or completeness of any of the information or recommendations furnished to Customer. Customer understands that FI, its managers, employees and/or affiliates may have a position in commodity futures, options or other derivatives which may not be consistent with the recommendations furnished by FI to Customer.

The risk of trading futures and options and other derivatives involves a substantial risk of loss and is not suitable for all persons. In purchasing an option, the risk is limited to the premium paid, and all commissions and fees involved with the trade. When an option is shorted or written, the writer of the option has unlimited risk with respect to the option written. The use of options strategies such as a straddles and strangles involve multiple option positions and may substantially increase the amount of commissions and fees paid to execute the strategy. Option prices do not necessarily move in tandem with cash or futures prices. Each person must consider whether a particular trade, combination of trades or strategy is suitable for that person's financial means and objectives.

This material may include discussions of seasonal patterns, however, futures prices have already factored in the seasonal aspects of supply and demand, and seasonal patterns are no indication of future market trends. Finally, past performance is not indicative of future results.

This communication may contain links to third party websites which are not under the control of FI and FI is not responsible for their content. Products and services are offered only in jurisdictions where solicitation and sale are lawful, and in accordance with applicable laws and regulations in each such jurisdiction.