

CFTC COMMITMENT OF TRADERS REPORT

As of 9/13/2022

TRADITIONAL FUNDS net position changes

Wed to Tue, in 000 contracts

	Corn	Bean	Meal	Oil	Chi. Wheat	KC Wheat	Min Wheat
Futures Only	8.0	10.9	7.0	5.8	1.6	6.1	0.1
Futures & Options Combined	7.7	12.2	8.4	7.4	(0.4)	6.5	0.2

TRADITIONAL COMMERCIAL net position changes

	Corn	Bean	Meal	Oil	Chi. Wheat	KC Wheat	Min Wheat
Futures Only	(3.5)	(10.6)	(11.1)	(9.3)	(0.7)	(5.8)	(1.2)
Futures & Options Combined	(2.3)	(13.2)	(13.1)	(10.8)	1.7	(6.2)	(1.3)

MANAGED MONEY net position changes

	Corn	Bean	Meal	Oil	Chi. Wheat	KC Wheat	Min Wheat
Futures Only	17.4	15.2	6.2	11.3	0.8	5.8	0.9
Futures & Options Combined	14.2	12.5	6.1	11.3	1.0	5.9	0.9

SWAP DEALERS net position changes

	Corn	Bean	Meal	Oil	Chi. Wheat	KC Wheat	Min Wheat
Futures Only	(1.7)	(3.7)	(1.6)	(0.6)	(1.6)	0.4	(0.1)
Futures & Options Combined	(3.9)	(6.3)	(2.3)	(0.4)	0.1	0.3	(0.1)

PRODUCERS/END USERS net position changes

	Corn	Bean	Meal	Oil	Chi. Wheat	KC Wheat	Min Wheat
Futures Only	(1.8)	(6.9)	(9.5)	(8.7)	0.9	(6.2)	(1.1)
Futures & Options Combined	1.6	(6.9)	(10.8)	(10.4)	1.6	(6.5)	(1.2)

INDEX net position changes

	Corn	Bean	Meal	Oil	Chi. Wheat	KC Wheat	Min Wheat
Futures & Options Combined	(1.0)	(7.6)	(2.3)	1.9	2.0	0.5	NA

SUPPLEMENTAL NON-COMMERCIAL net position changes

	Corn	Bean	Meal	Oil	Chi. Wheat	KC Wheat	Min Wheat
Futures & Options Combined	6.5	17.6	10.0	6.2	(1.6)	6.1	NA

OPEN INTEREST net position changes

Wed to Tue, in 000 contracts

	Corn	Bean	Meal	Oil	Chi. Wheat	KC Wheat	Min Wheat
Futures Only	30.3	36.8	(5.3)	4.8	(2.3)	3.5	2.3
Futures & Options Combined	61.5	52.2	(3.1)	10.3	9.5	4.9	2.4

Source: CFTC and FI

Wed to Tue, in 000 contracts

9/16/2022

**COMMITMENT OF TRADERS
FUTURES ONLY NET POSITIONS
AS OF 09/13/2022
(IN THOUSAND CONTRACTS)**

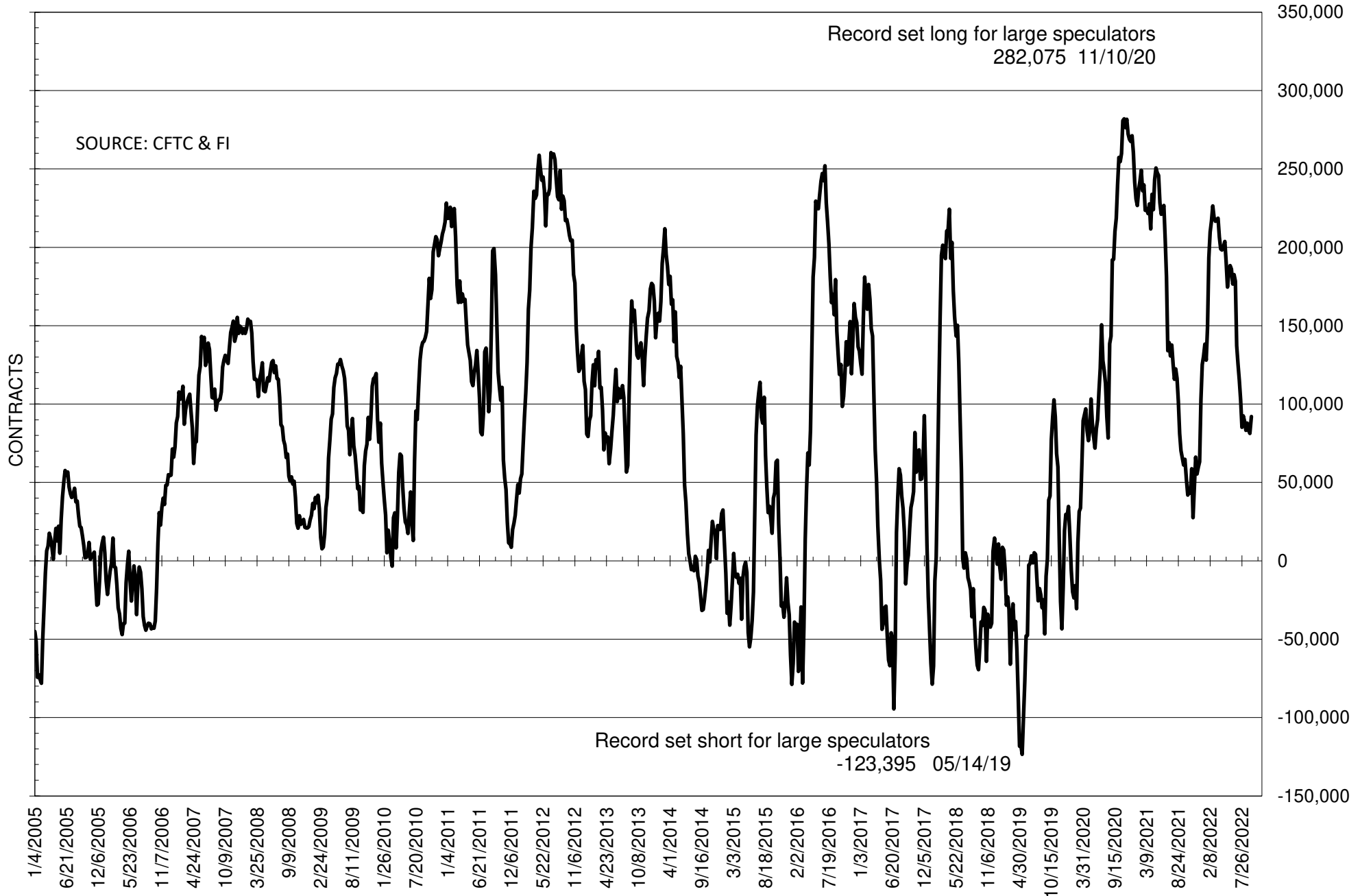
	COMMERCIAL				(FUND) NON COMMERCIAL				(SPEC) NON-REPORTABLE			
	13-Sep	6-Sep	30-Aug	23-Aug	13-Sep	6-Sep	30-Aug	23-Aug	13-Sep	6-Sep	30-Aug	23-Aug
	WHEAT											
Chicago	13.0	13.7	14.9	12.3	-8.1	-9.8	-11.5	-8.3	-4.8	-3.9	-3.4	-4.1
Kansas City	-13.3	-7.5	-7.1	-6.2	14.2	8.1	8.5	6.8	-0.9	-0.5	-1.3	-0.6
Minneapolis	-1.7	-0.5	-0.1	0.9	2.7	2.5	1.9	1.9	-1.0	-2.0	-1.8	-2.8
All Wheat	-2.0	5.6	7.7	7.1	8.8	0.8	-1.1	0.5	-6.7	-6.5	-6.6	-7.5
CORN	-234.2	-230.7	-225.8	-206.8	294.6	286.5	283.4	263.2	-60.4	-55.8	-57.6	-56.4
OATS	-0.6	-0.5	-0.4	#VALUE!	0.1	0.0	0.1	#VALUE!	0.5	0.5	0.2	#VALUE!
SOYBEANS	-61.4	-50.8	-52.8	-58.4	92.1	81.3	83.6	87.8	-30.7	-30.4	-30.8	-29.5
SOY OIL	-64.4	-55.1	-62.7	-55.5	54.6	48.8	54.0	46.6	9.8	6.4	8.8	8.9
SOY MEAL	-137.8	-126.6	-137.8	-141.2	114.2	107.1	116.2	117.6	23.6	19.5	21.6	23.7

Oats positions thin to be reported

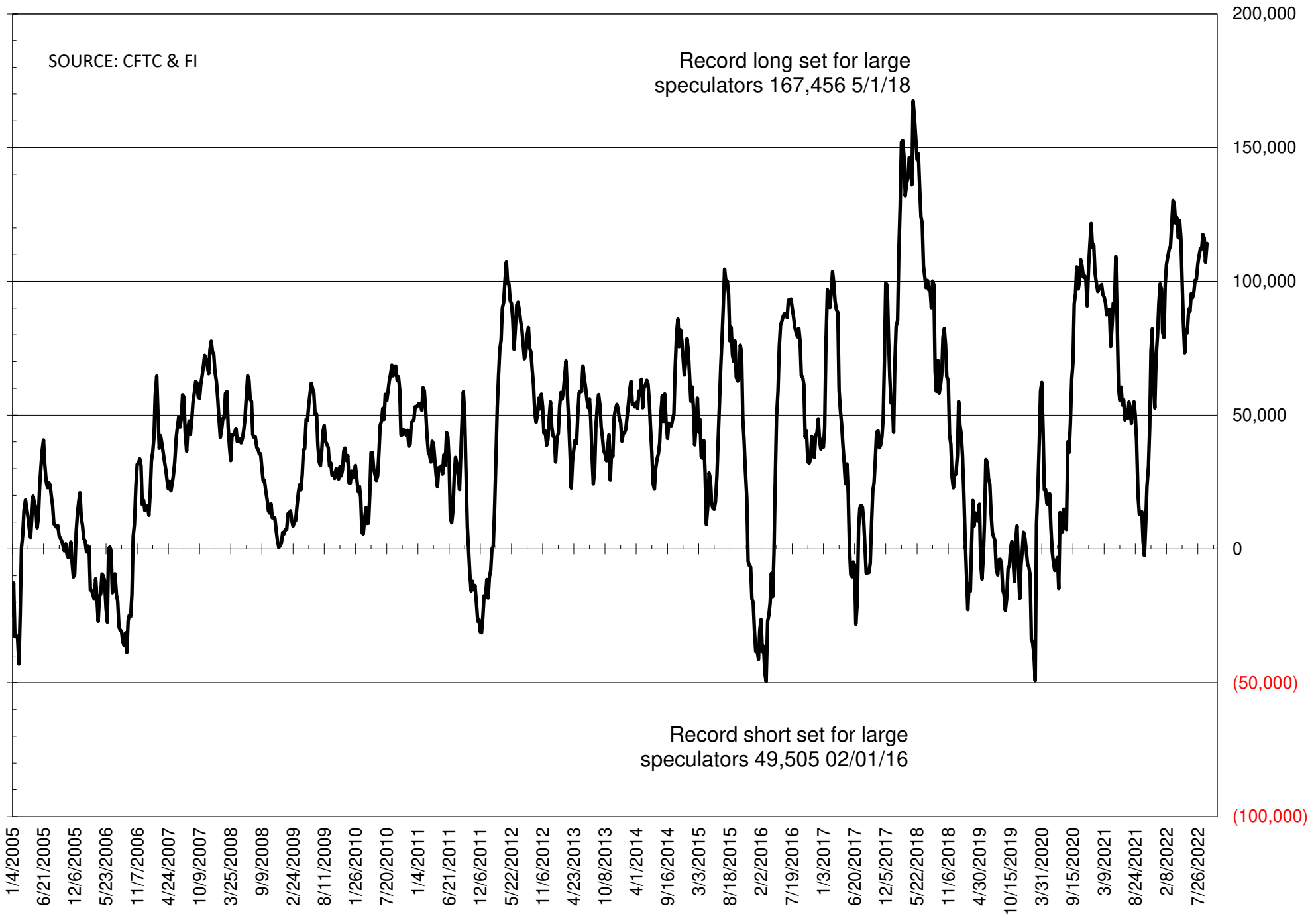
	TOTAL OPEN INTEREST				NEARBY FUTURES PRICE					13-Sep-22 LAST REPORTED % HELD BY TRADERS			
	13-Sep	6-Sep	30-Aug	23-Aug	V/X/Z Latest	V/X/Z 13-Sep	V/X/Z 6-Sep	V/X/Z 30-Aug	U 23-Aug	LARGE FUND		SMALL	
										LONG	SHORT	LONG	SHORT
WHEAT													
Chicago	287046	289329	288545	320495	859.25	842.75	817.00	820.25	783.00	0%	34%	0%	12%
Kansas City	149786	146259	145155	157509	935.25	944.00	882.00	897.75	883.50	0%	21%	0%	13%
Minneapolis	48272	45971	45136	54693	940.75	928.50	889.75	921.00	900.75	0%	12%	0%	20%
CORN	1310411	1280087	1267735	1312958	677.25	709.00	676.00	677.25	660.25	0%	10%	0%	14%
OATS	3724	3489	3238	#VALUE!	396.00	416.50	383.75	398.00	412.75	0%	16%	0%	32%
SOYBEANS	643018	606187	605924	611218	1448.50	1478.75	1398.75	1432.50	1570.00	25%	11%	6%	11%
SOY OIL	398345	393510	390796	407225	68.66	68.93	64.90	67.69	69.66	0%	8%	0%	6%
SOY MEAL	383899	389152	391177	421420	429.60	428.90	410.60	429.80	467.20	0%	3%	0%	7%

SOURCE: CFTC & FI

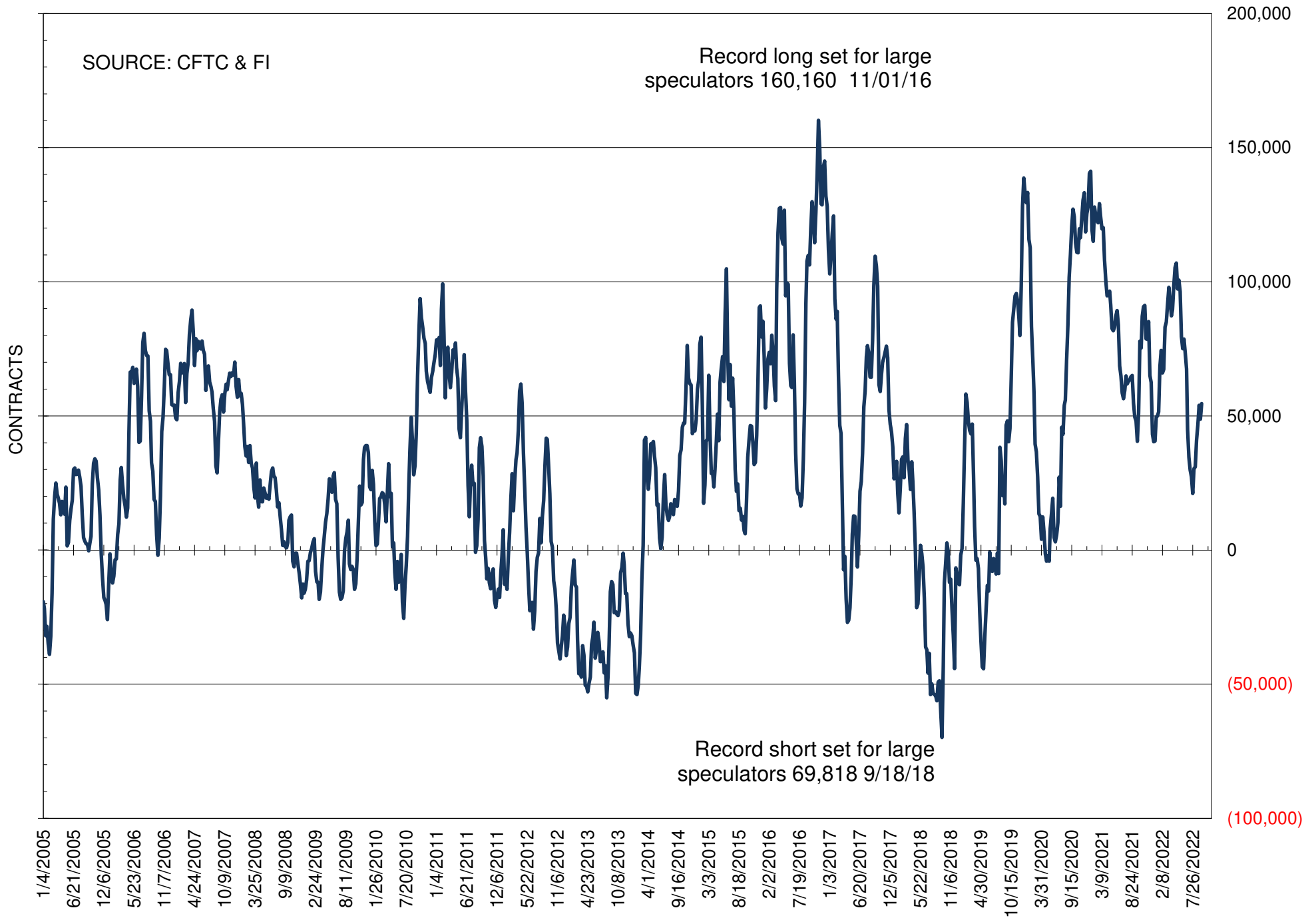
NET POSITION OF FUTURES ONLY LARGE SPECS IN SOYBEANS



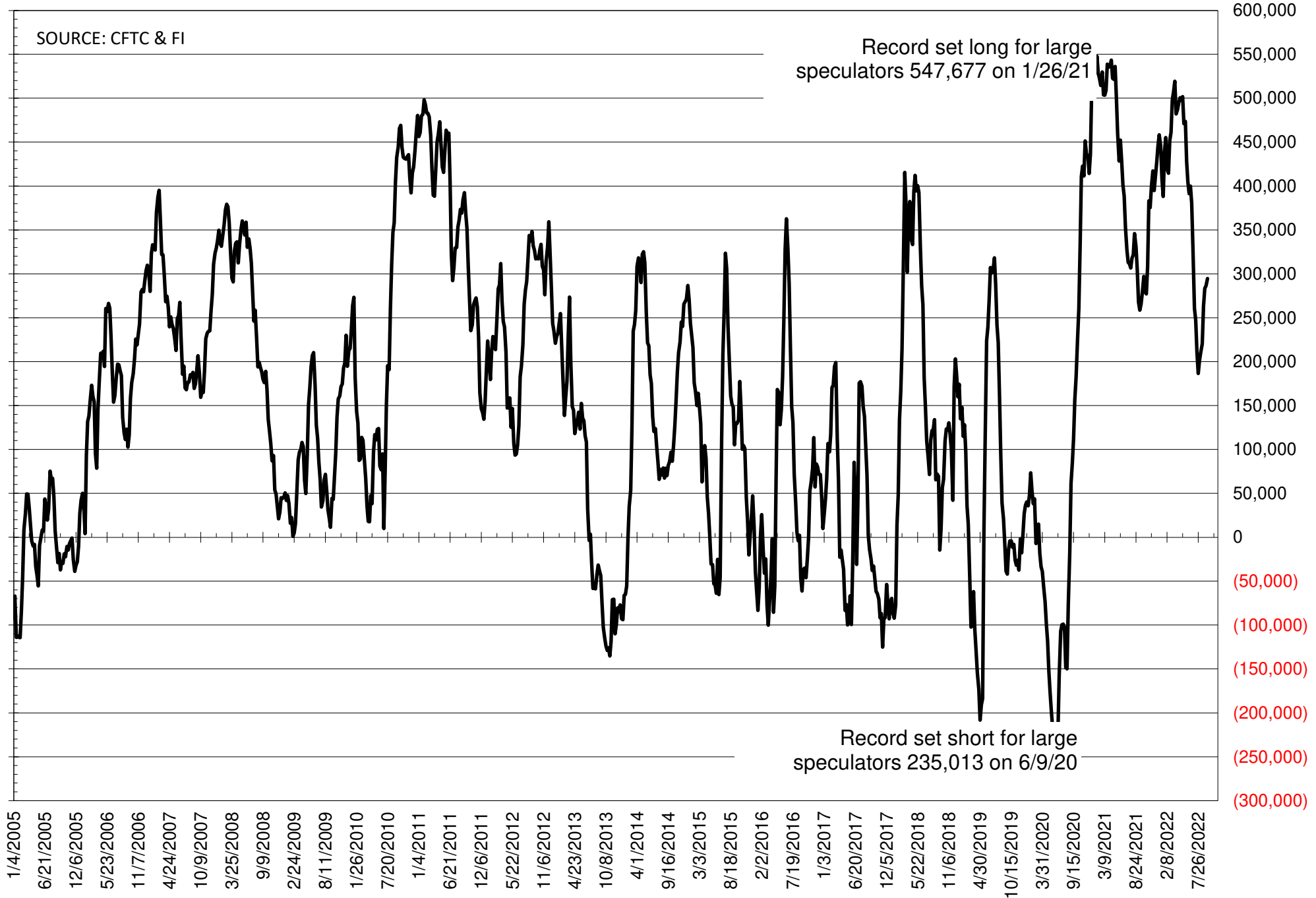
NET POSITION OF FUTURES ONLY LARGE SPECS IN SOYMEAL



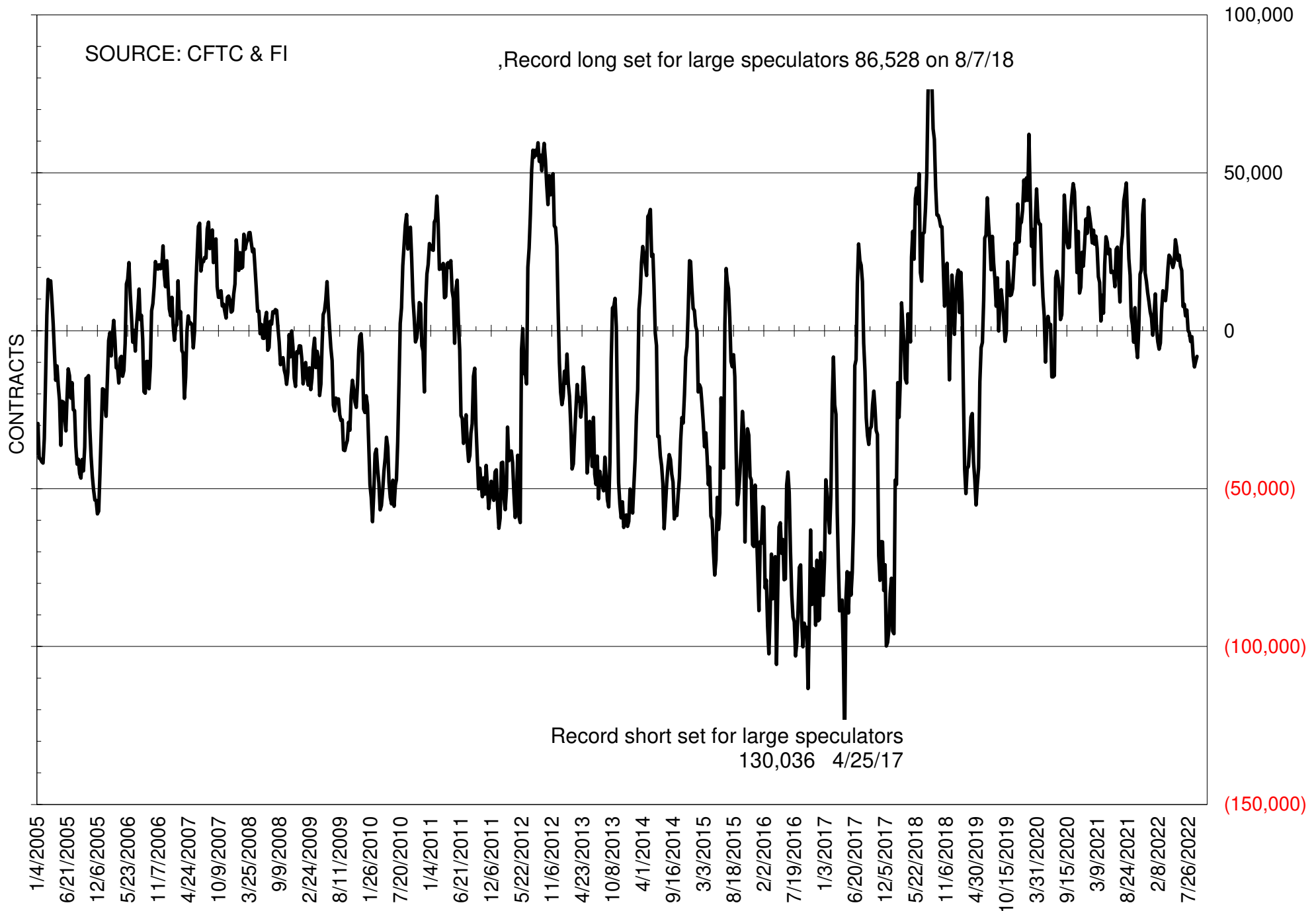
NET POSITION OF FUTURES ONLY LARGE SPECS IN SOYOIL



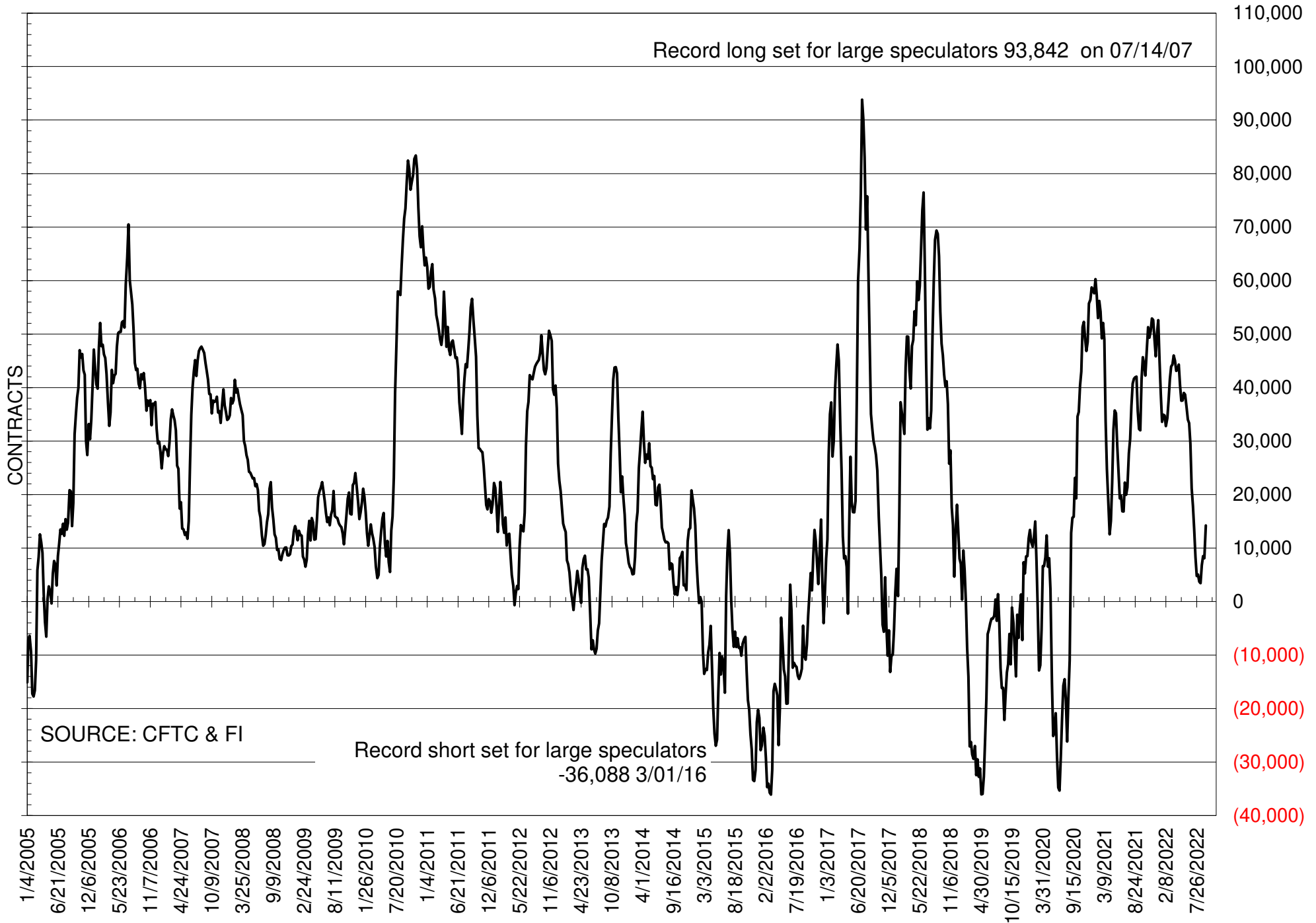
NET POSITION OF LARGE SPECULATORS IN CORN



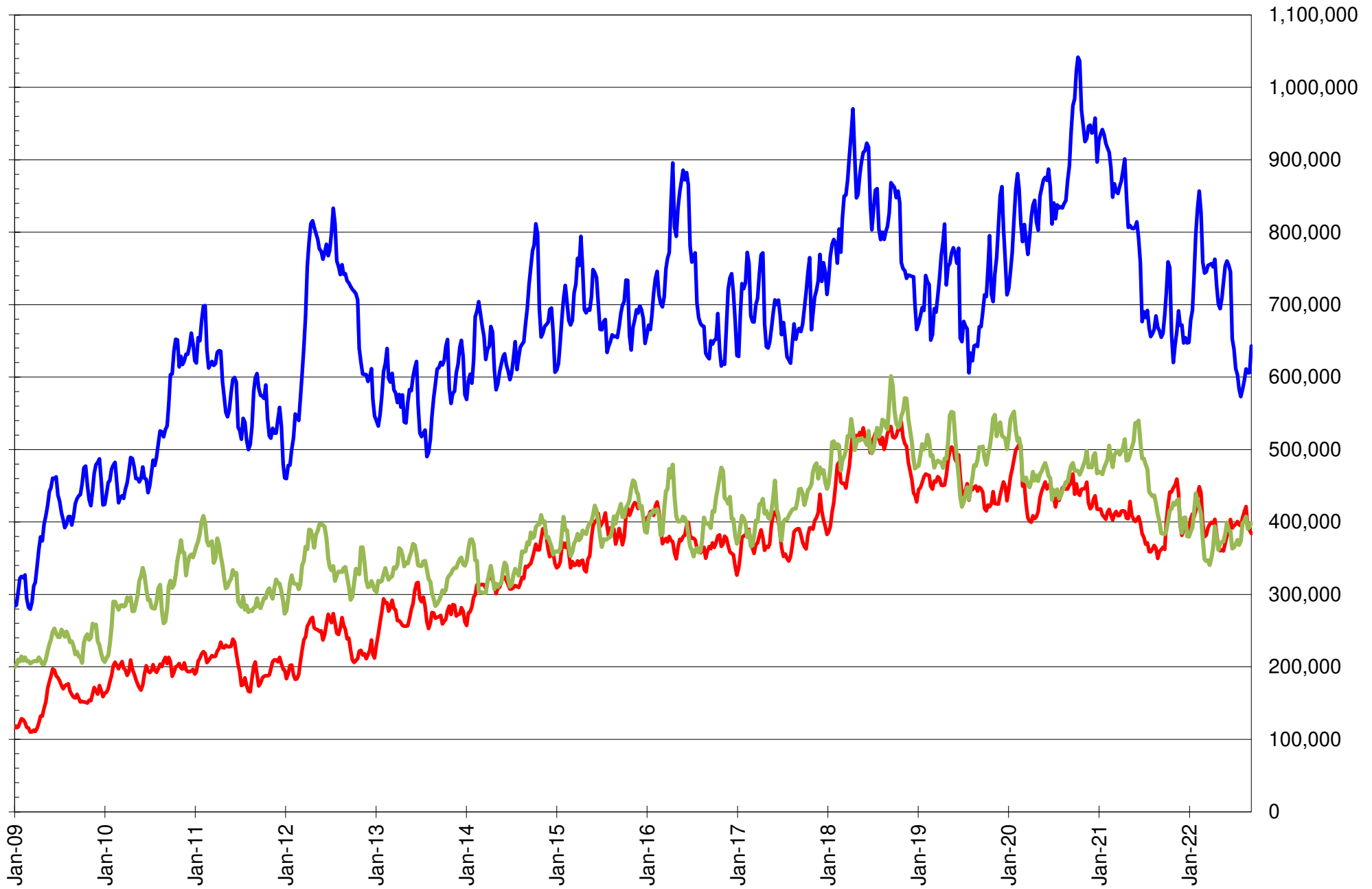
NET POSITION OF FUTURES ONLY LARGE SPECS IN CHICAGO WHEAT



NET POSITION OF LARGE SPECULATORS IN KANSAS CITY WHEAT



TOTAL OPEN INTEREST IN SOYBEANS, MEAL AND OIL, FUTURES ONLY



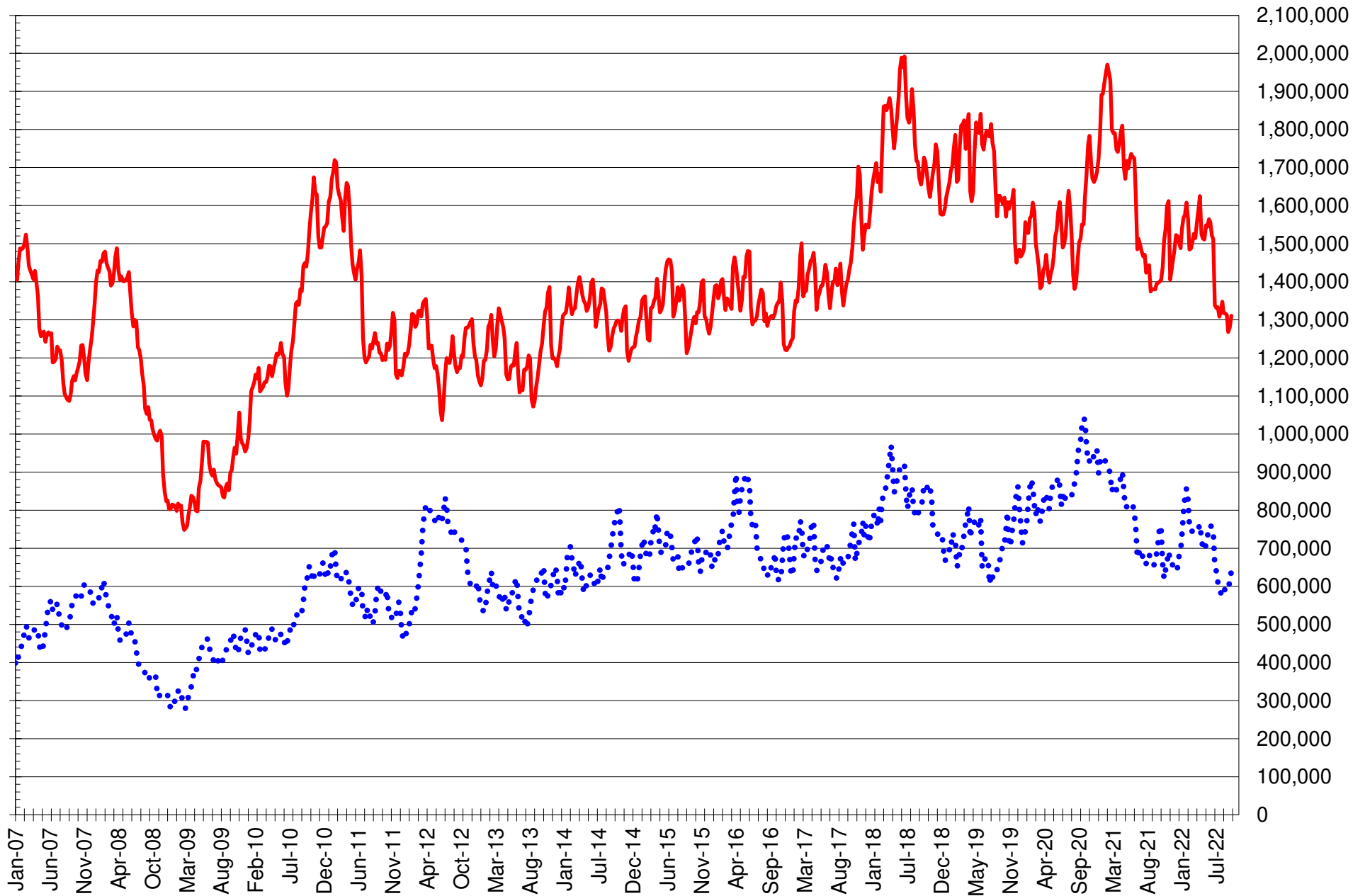
SOURCE: CFTC & FI

— SOYBEANS

— SOYBEAN MEAL

— SOYBEAN OIL

TOTAL OPEN INTEREST IN CORN AND SOYBEANS, FUTURES ONLY



SOURCE: CFTC & FI

— CORN

•••• SOYBEANS

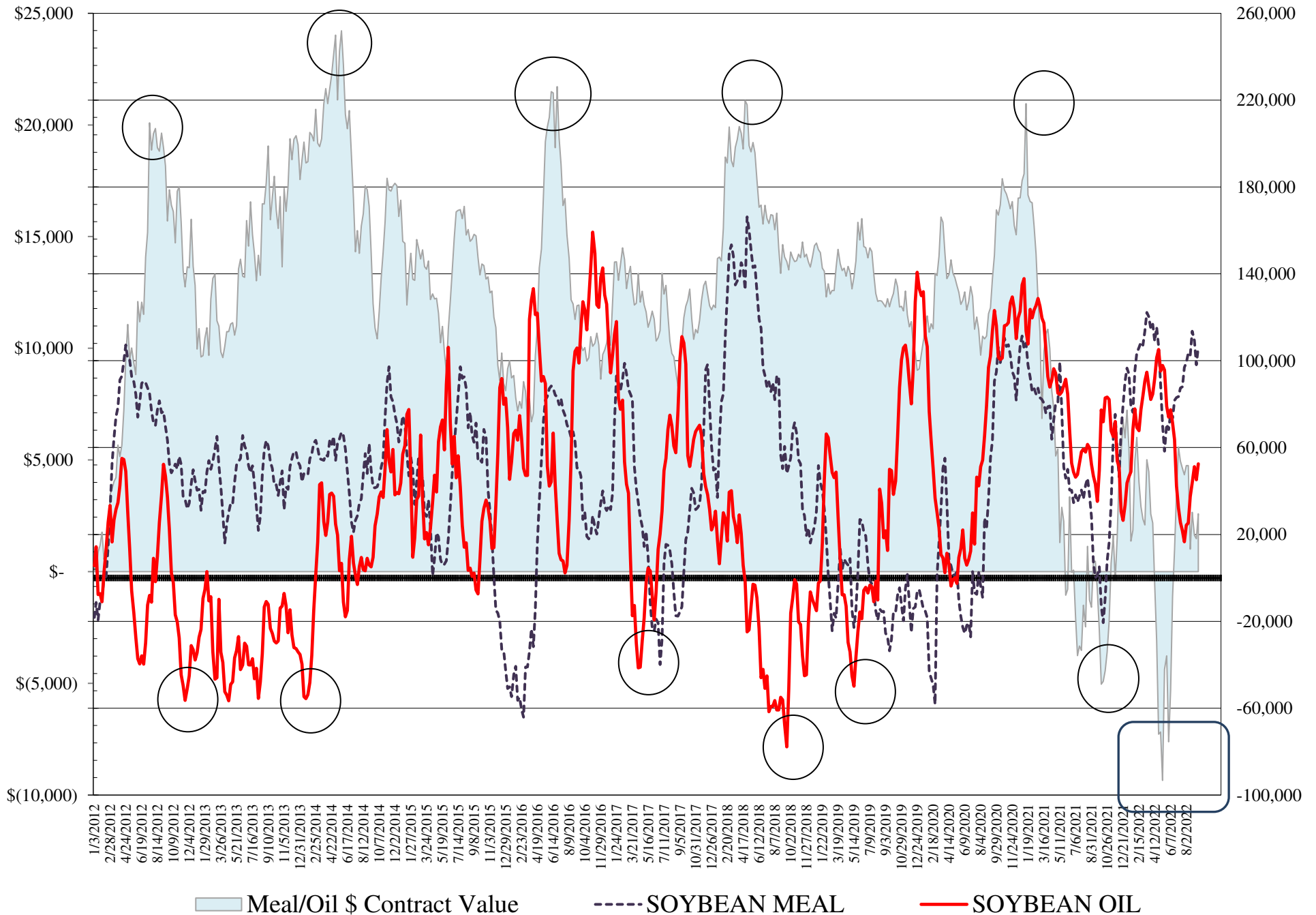
**COMMITMENT OF TRADERS
FUTURES & OPTIONS NET POSITIONS
AS OF 09/13/2022
(IN THOUSAND CONTRACTS)**

	COMMERCIAL				(FUND) NON COMMERCIAL				(SPEC) NON-REPORTABLE			
	13-Sep	6-Sep	30-Aug	23-Aug	13-Sep	6-Sep	30-Aug	23-Aug	13-Sep	6-Sep	30-Aug	23-Aug
WHEAT												
Chicago	14.4	12.8	13.5	20.3	-10.6	-10.2	-11.3	-17.5	-3.8	-2.6	-2.2	-2.8
Kansas City	-14.3	-8.1	-7.6	-5.6	14.6	8.2	8.6	5.5	-0.4	-0.1	-1.0	0.1
Minneapolis	-1.6	-0.3	0.4	1.7	2.5	2.3	1.4	1.0	-0.9	-2.0	-1.8	-2.7
All Wheat	-1.4	4.4	6.3	16.4	6.6	0.3	-1.3	-11.0	-5.1	-4.7	-5.0	-5.4
CORN	-225.7	-223.4	-219.7	-191.5	286.0	278.3	276.6	247.0	-60.3	-55.0	-56.9	-55.6
OATS	-0.6	-0.4	-0.3	#VALUE!	0.0	-0.1	0.0	#VALUE!	0.6	0.5	0.3	#VALUE!
SOYBEANS	-63.2	-50.1	-55.0	-62.6	98.6	86.4	90.9	95.2	-35.4	-36.3	-35.9	-32.6
SOY OIL	-62.9	-52.1	-60.6	-53.6	52.5	45.1	51.2	43.8	10.4	7.0	9.3	9.8
SOY MEAL	-132.3	-119.2	-132.8	-139.4	106.5	98.1	109.4	113.6	25.7	21.1	23.4	25.8

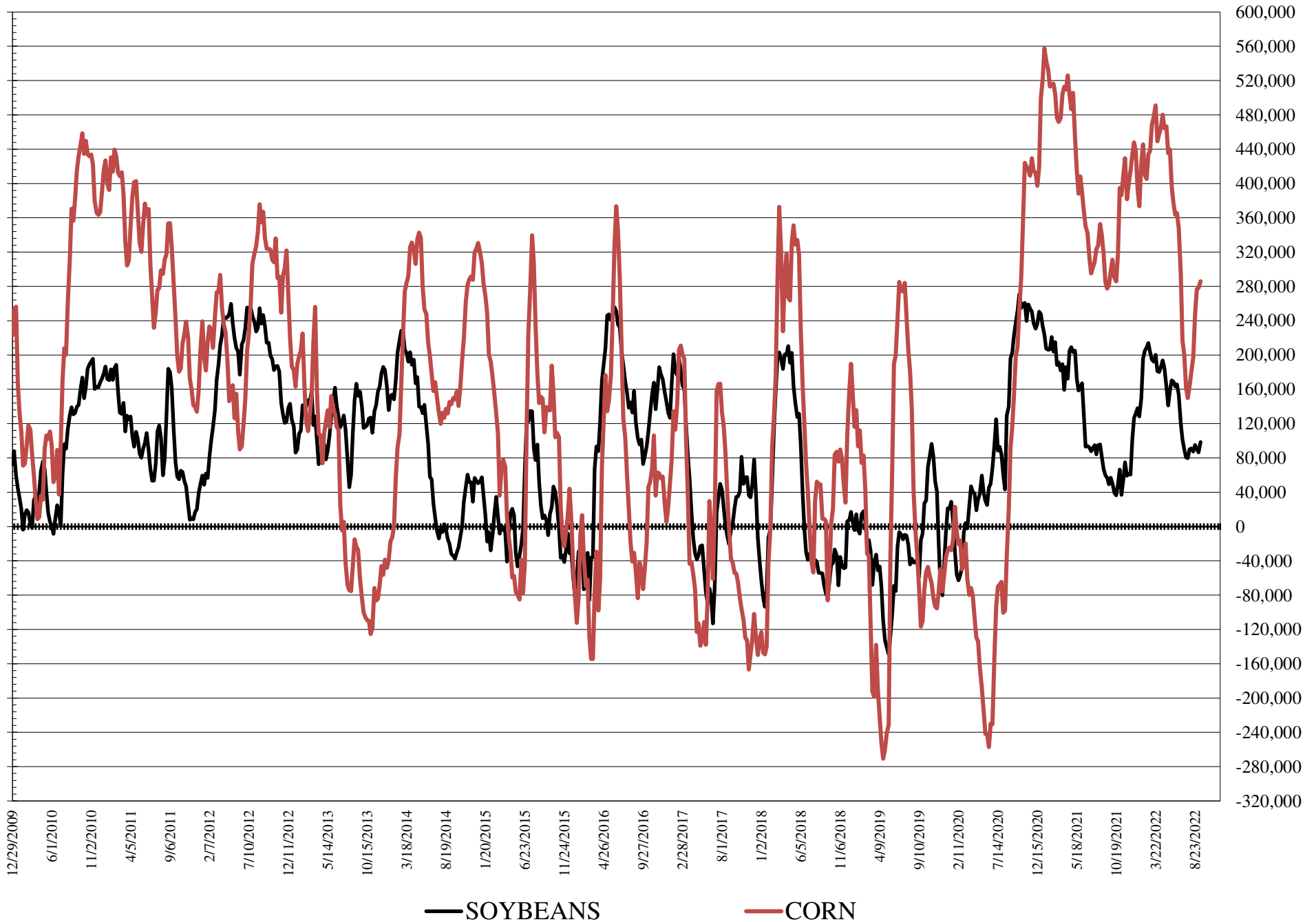
	TOTAL OPEN INTEREST				COMMERCIALS		% HELD BY TRADERS LARGE (FUNDS)		SMALL (NON-REP)	
	13-Sep	6-Sep	30-Aug	23-Aug	LONG	SHORT	LONG	SHORT	LONG	SHORT
WHEAT										
Chicago	373,189	363,699	362,465	432,194	38%	34%	23%	25%	8%	9%
Kansas City	165,458	160,602	159,411	176,942	44%	52%	28%	19%	12%	12%
Minneapolis	50,363	47,914	47,123	57,943	56%	59%	17%	12%	18%	20%
CORN	1,792,121	1,730,634	1,716,908	1,848,801	39%	51%	21%	5%	9%	12%
OATS	3,860	3,618	3,377	#VALUE!						
SOYBEANS	794,029	741,820	741,434	789,452	47%	55%	20%	7%	6%	10%
SOY OIL	449,801	439,474	439,383	472,042	48%	62%	18%	7%	8%	5%
SOY MEAL	428,745	431,875	435,028	474,763	41%	72%	28%	3%	13%	7%

SOURCE: CFTC & FI

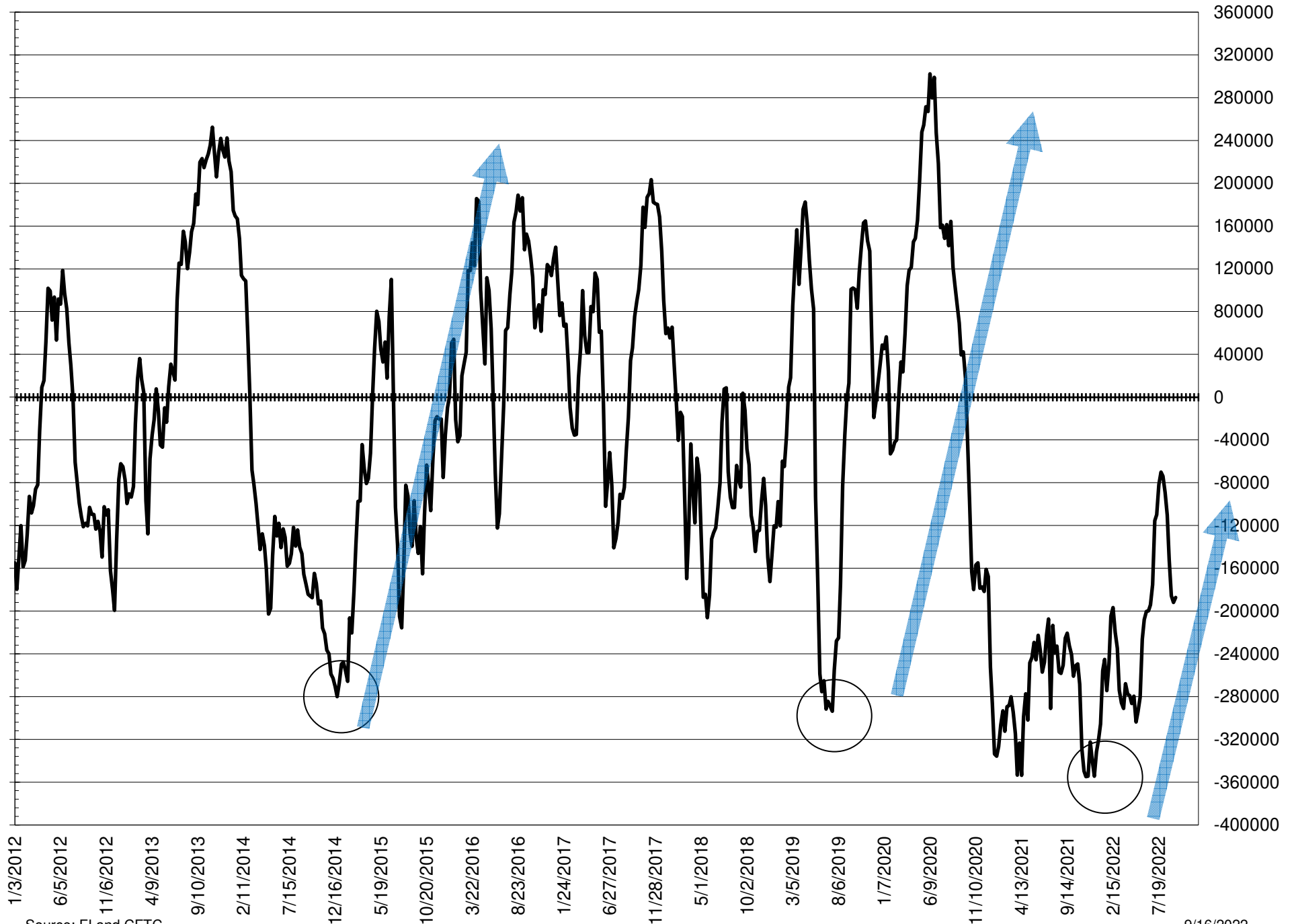
NET POSITION FUTURES AND OPTIONS OF LARGE SPECULATORS IN SOYBEAN MEAL AND SOYBEAN OIL



NET POSITION FUTURES AND OPTIONS OF LARGE SPECULATORS IN SOYBEANS AND CORN



NET POSITION FUTURES AND OPTIONS SPREAD OF LARGE SPECULATORS IN SOYBEANS MINUS CORN



Source: FI and CFTC

9/16/2022

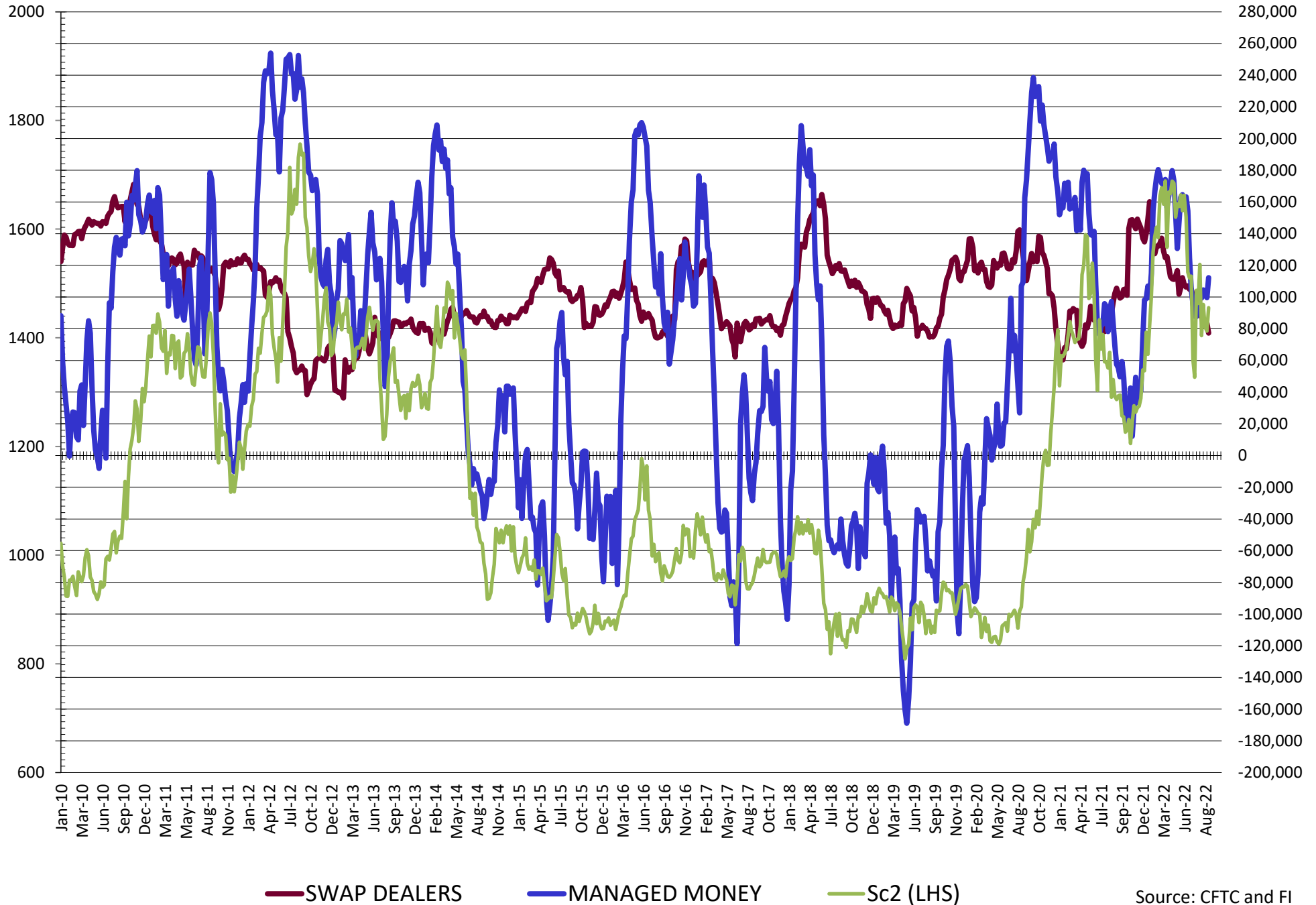
**DISAGGREGATED COMMITMENT OF TRADERS
FUTURES & OPTIONS NET POSITIONS
AS OF 09/13/2022
(IN THOUSAND CONTRACTS)**

	PRODUCER / MERCHANT / PROCESSOR / USER				(INDEX/ETF) SWAP DEALERS				(CTA/CPO/OTHER UNREGISTERED) MANAGED MONEY			
	13-Sep	6-Sep	30-Aug	23-Aug	13-Sep	6-Sep	30-Aug	23-Aug	13-Sep	6-Sep	30-Aug	23-Aug
	WHEAT											
Chicago	(52.3)	(53.9)	(52.1)	(47.5)	66.7	66.6	65.6	67.8	(20.4)	(21.4)	(22.2)	(26.1)
Kansas City	(42.4)	(36.0)	(35.4)	(36.0)	28.1	27.8	27.8	30.4	17.0	11.1	12.5	9.4
Minneapolis	(3.0)	(1.8)	(1.3)	0.2	1.4	1.6	1.7	1.5	(0.2)	(1.0)	(1.4)	(1.5)
All Wheat	(97.7)	(91.6)	(88.8)	(83.3)	96.3	96.0	95.1	99.7	(3.5)	(11.4)	(11.2)	(18.1)
CORN	(454.9)	(456.5)	(450.0)	(428.4)	229.2	233.2	230.3	236.9	240.6	226.5	221.5	182.2
OATS	(0.8)	(0.5)	(0.5)	0.0	0.2	0.2	0.1	0.0	(0.5)	(0.6)	(0.4)	0.0
SOYBEANS	(140.5)	(133.6)	(139.3)	(145.9)	77.2	83.5	84.3	83.4	112.1	99.6	101.8	104.5
SOY OIL	(150.8)	(140.4)	(146.5)	(138.9)	87.9	88.3	86.0	85.3	55.3	44.0	49.2	42.2
SOY MEAL	(218.3)	(207.5)	(221.4)	(228.3)	86.0	88.3	88.6	88.9	87.7	81.6	93.6	95.7

	TOTAL OPEN INTEREST				OTHER REPORTABLE				NON REPORTABLE			
	13-Sep	6-Sep	30-Aug	23-Aug	13-Sep	6-Sep	30-Aug	23-Aug	13-Sep	6-Sep	30-Aug	23-Aug
	WHEAT											
Chicago	373,189	363,699	362,465	432,194	9.8	11.3	11.0	8.6	(3.8)	(2.6)	(2.2)	(2.8)
Kansas City	165,458	160,602	159,411	176,942	(2.4)	(2.9)	(3.9)	(4.0)	(0.4)	(0.1)	(1.0)	0.1
Minneapolis	50,363	47,914	47,123	57,943	2.6	3.3	2.9	2.5	(0.9)	(2.0)	(1.8)	(2.7)
All Wheat	589,010	572,215	568,999	667,079	10.1	11.7	9.9	7.1	(5.1)	(4.7)	(5.0)	(5.4)
CORN	1,792,121	1,730,634	1,716,908	1,848,801	45.4	51.8	55.1	64.8	(60.3)	(55.0)	(55.0)	(55.0)
OATS	3,860	3,618	3,377	0	0.5	0.5	0.5	0.0	0.6	0.5	0.3	0.0
SOYBEANS	794,029	741,820	741,434	789,452	(13.5)	(13.2)	(10.9)	(9.3)	(35.4)	(36.3)	(35.9)	(32.6)
SOY OIL	449,801	439,474	439,383	472,042	(2.8)	1.2	2.0	1.6	10.4	7.0	9.3	9.8
SOY MEAL	428,745	431,875	435,028	474,763	18.8	16.5	15.7	17.9	25.7	21.1	23.4	25.8

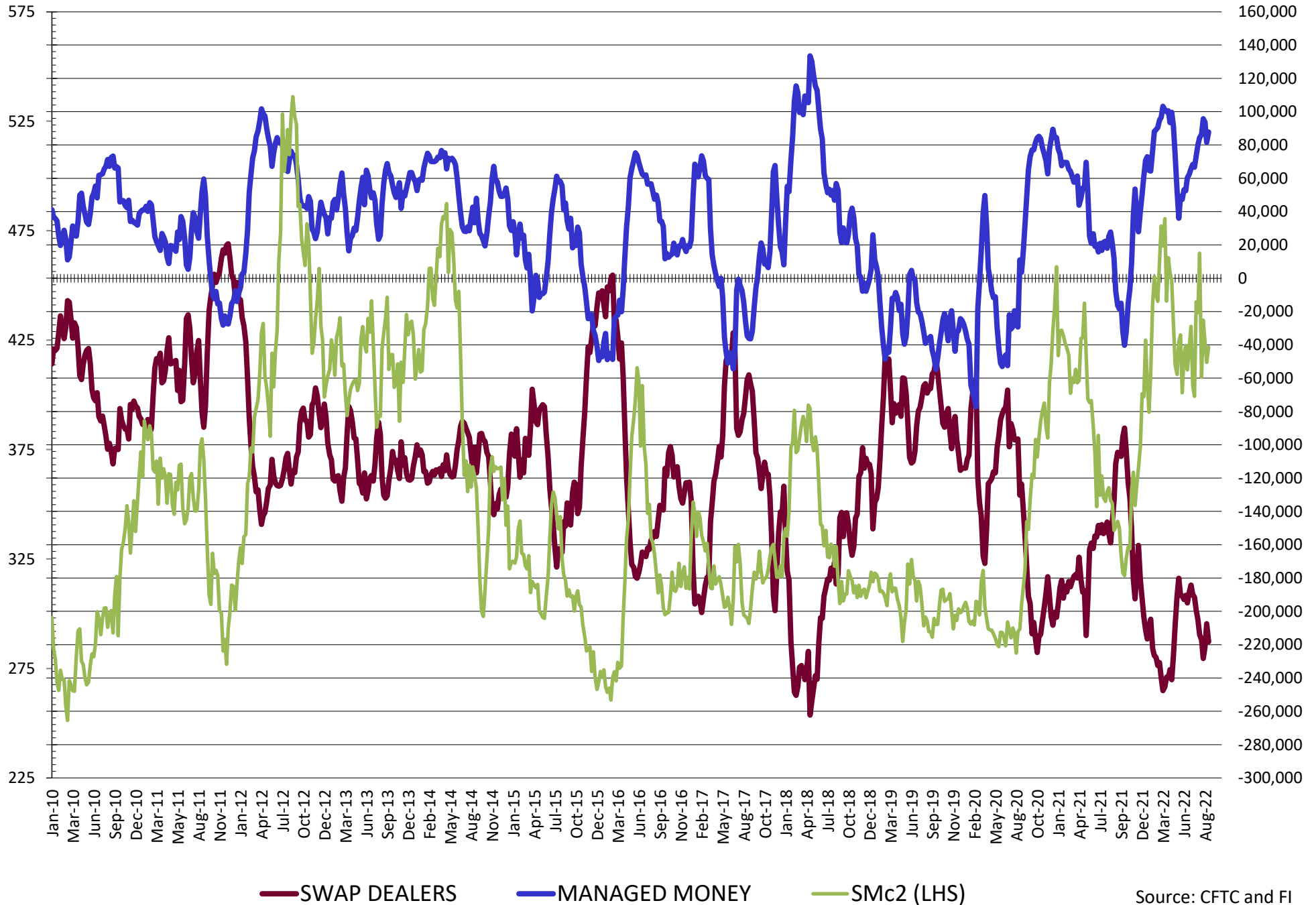
SOURCE: CFTC & FI

NET POSITION FUTURES AND OPTIONS OF SWAP AND MANAGED FUNDS IN SOYBEANS



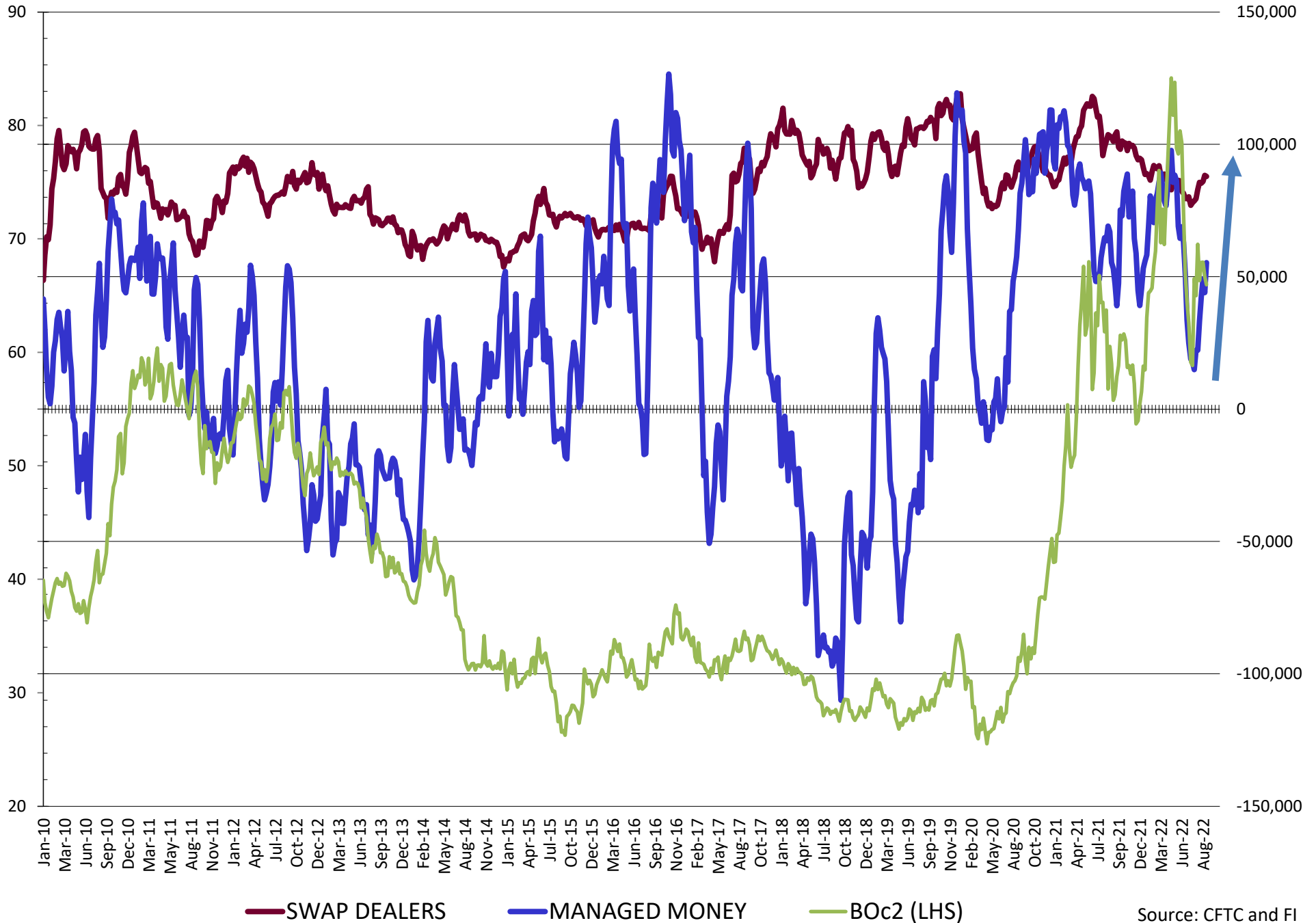
Source: CFTC and FI
9/16/2022

NET POSITION FUTURES AND OPTIONS OF SWAP AND MANAGED FUNDS IN SOYBEAN MEAL



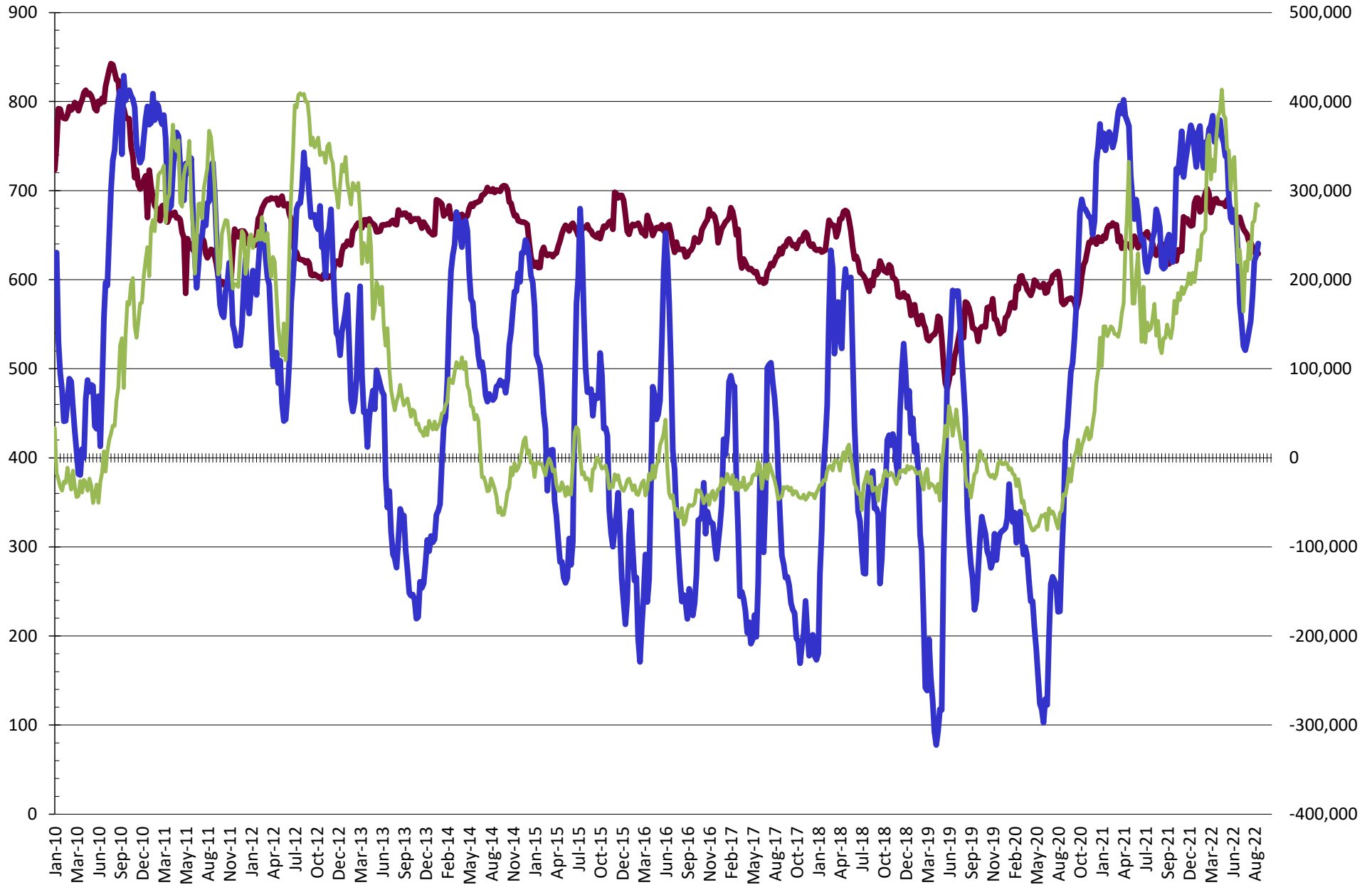
Source: CFTC and FI
9/16/2022

NET POSITION FUTURES AND OPTIONS OF SWAP AND MANAGED FUNDS IN SOYBEAN OIL



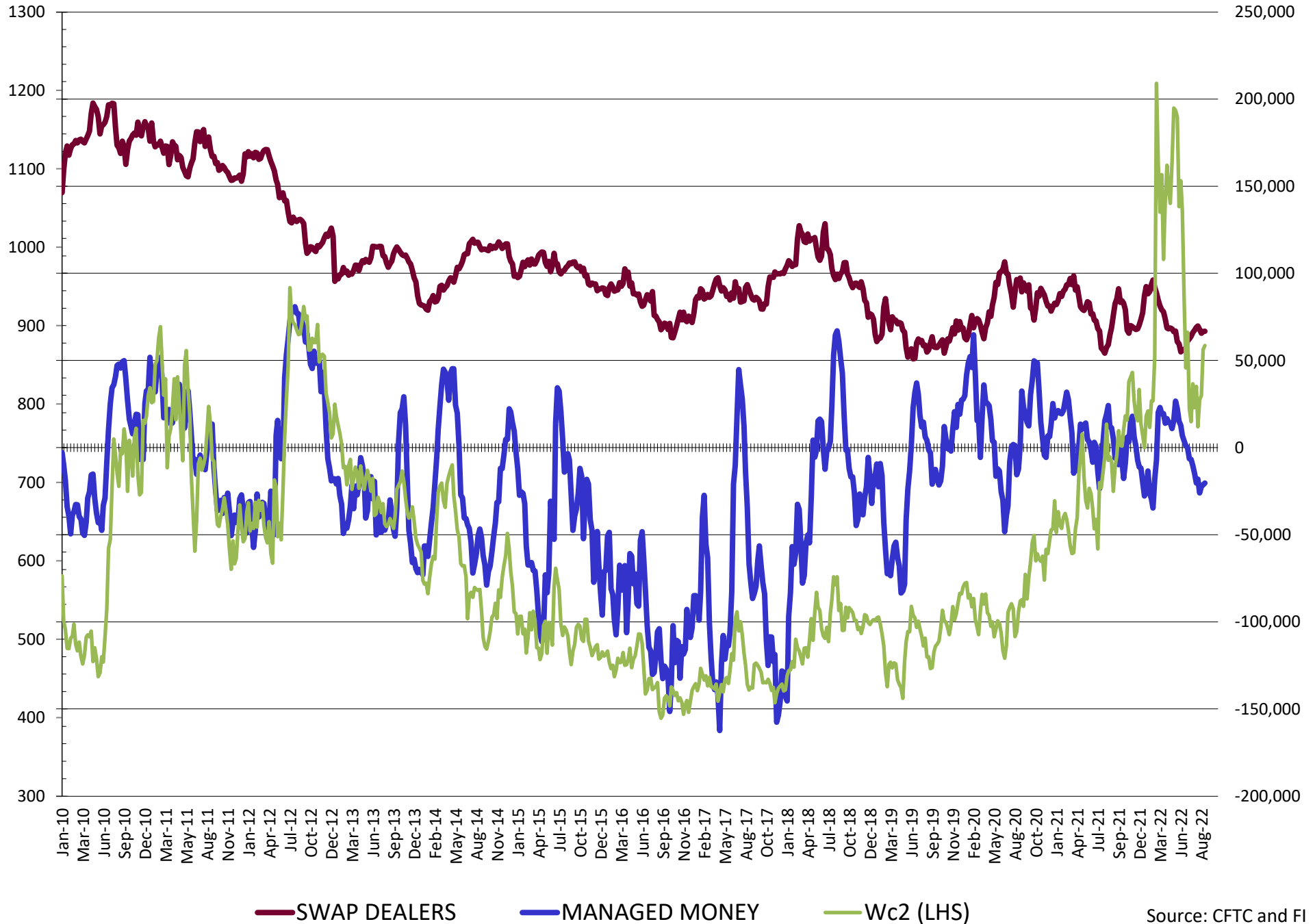
Source: CFTC and FI
9/16/2022

NET POSITION FUTURES AND OPTIONS OF SWAP AND MANAGED FUNDS IN CORN

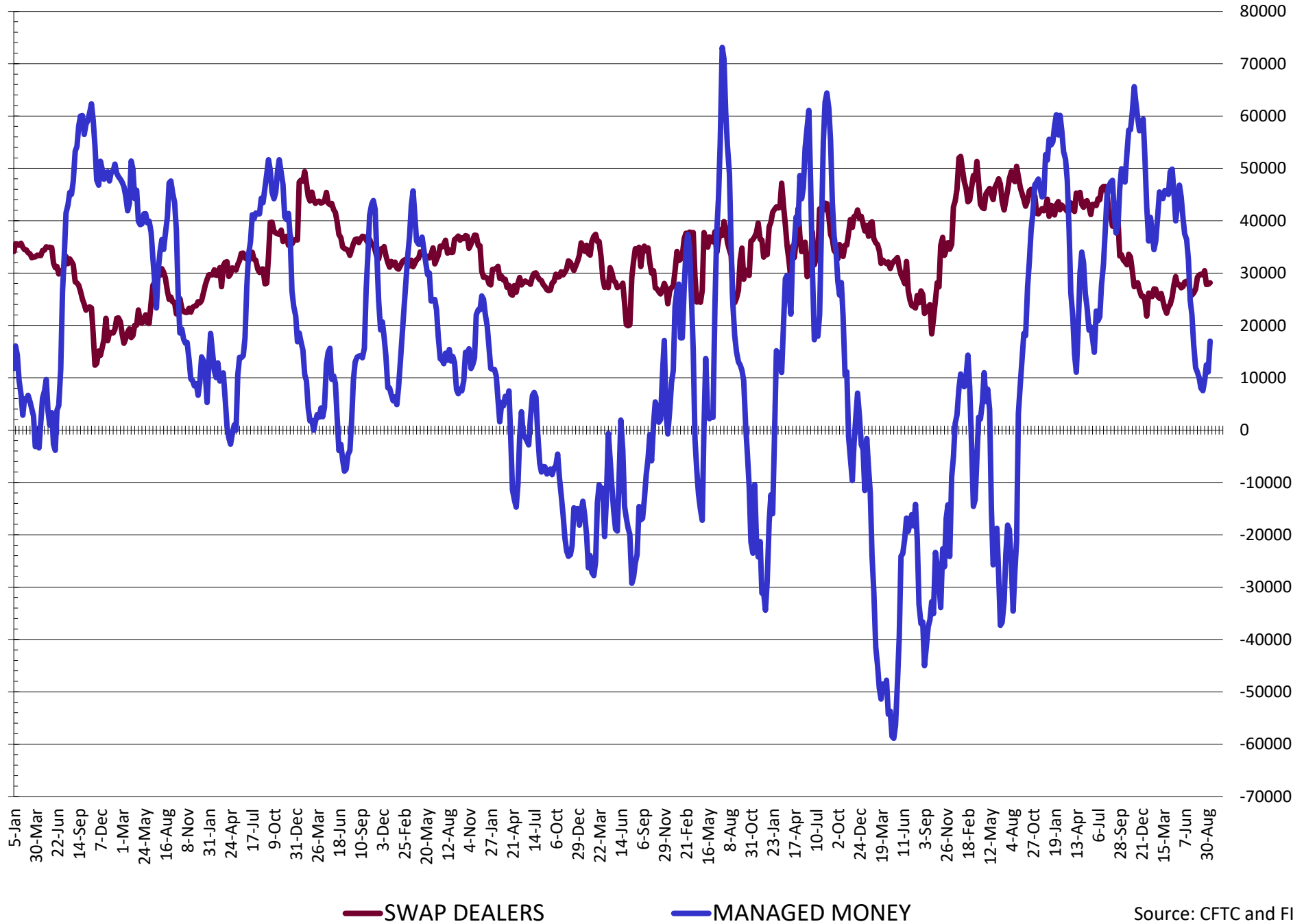


— SWAP DEALERS
 — MANAGED MONEY
 — Cc2 (LHS)

NET POSITION FUTURES AND OPTIONS OF SWAP AND MANAGED FUNDS IN CHICAGO WHEAT

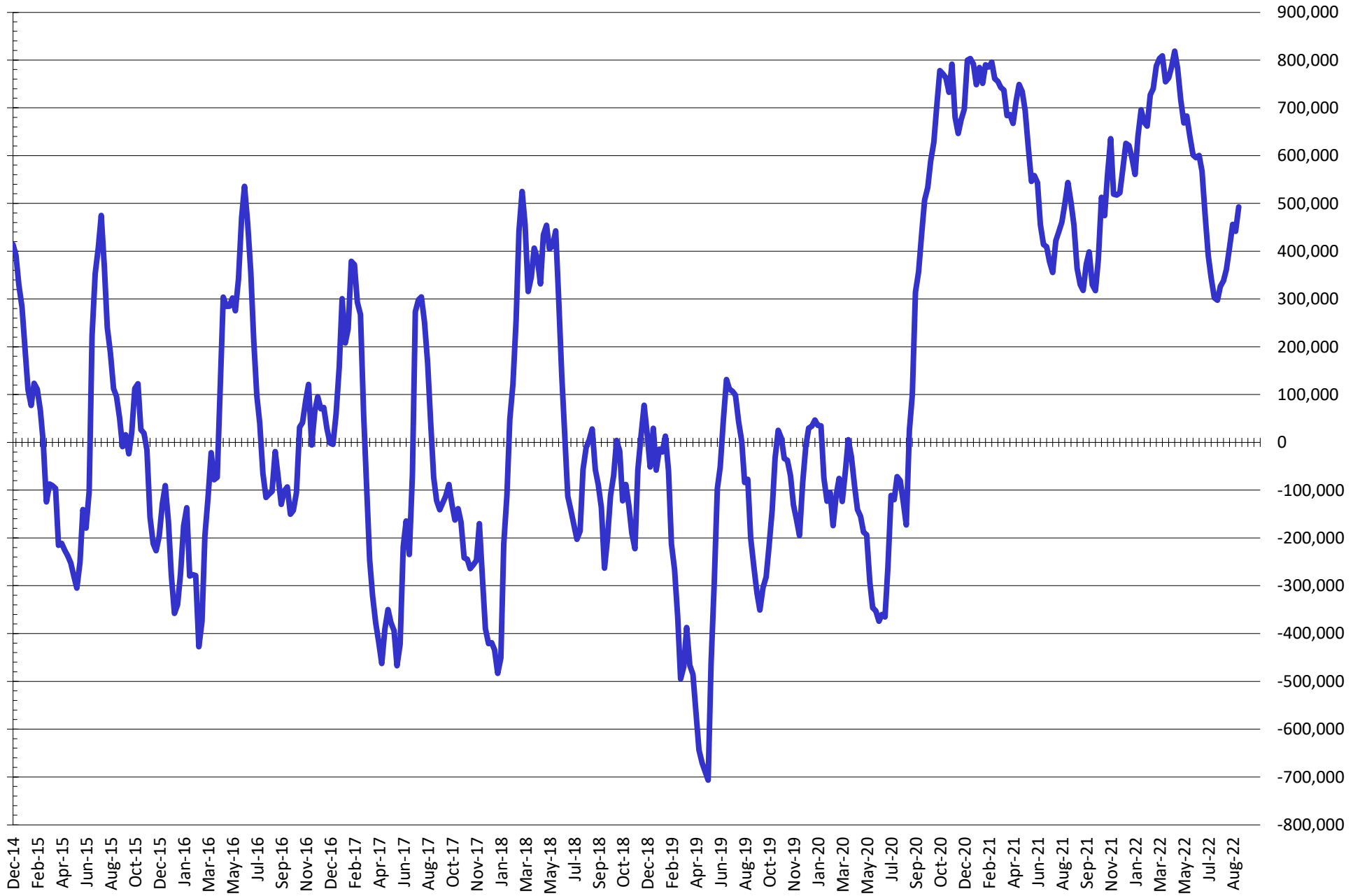


NET POSITION FUTURES AND OPTIONS OF SWAP DEALERS AND MANAGED FUNDS IN KANSAS WHEAT



Source: CFTC and FI
9/16/2022

NET POSITION FUTURES AND OPTIONS OF SWAP AND MANAGED FUNDS IN COMBINED SRW, HRW, CORN, SOYBEANS, SOYMEAL AND SOYOIL



— Net Managed Money

Source: CFTC and FI
9/16/2022

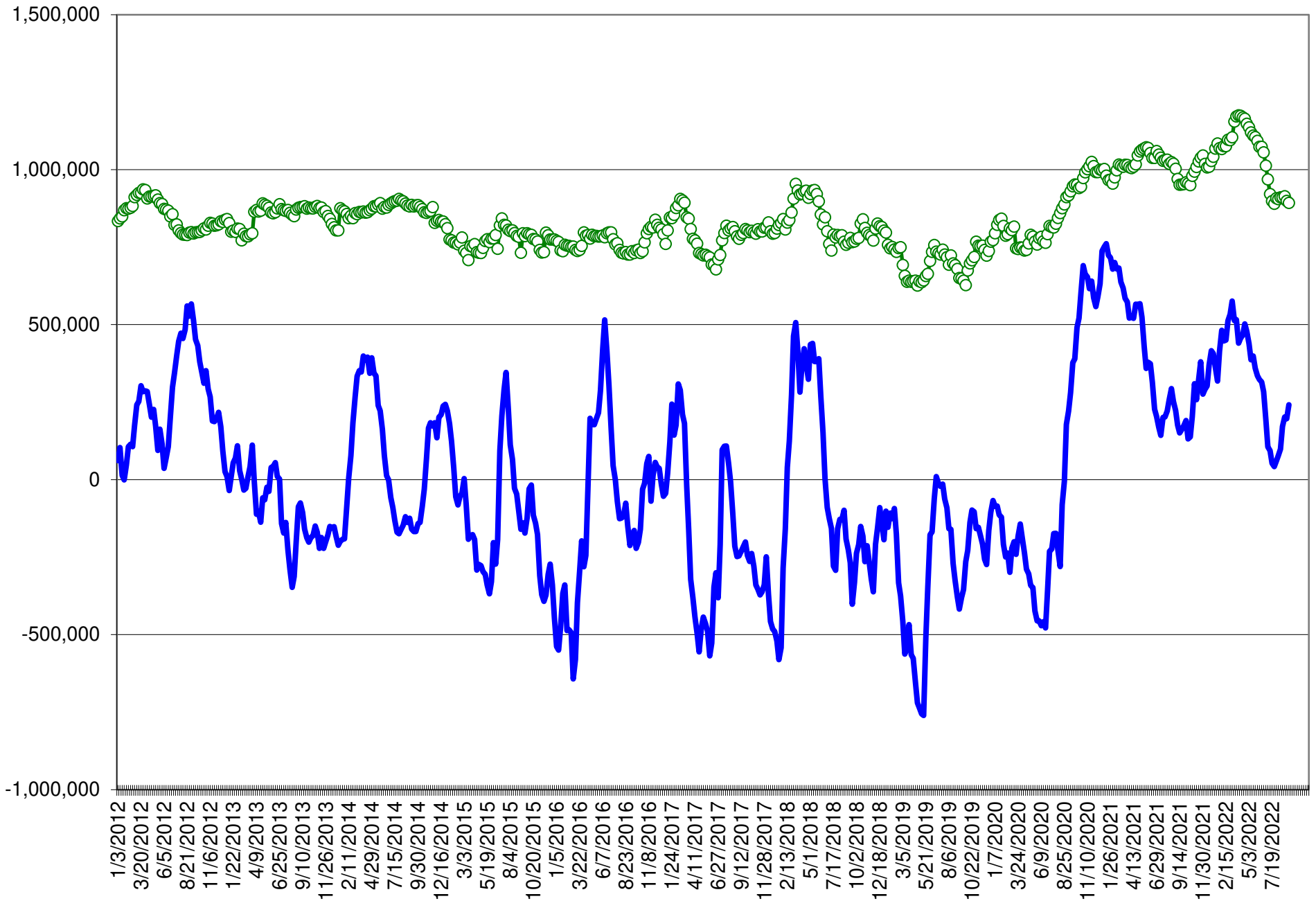
COMMITMENT OF TRADERS
FUTURES & OPTIONS NET POSITIONS (INDEX BROKEN OUT)
AS OF 09/13/2022
(IN THOUSAND CONTRACTS)

	COMMERCIAL				(FUND) NON COMMERCIAL				(SPEC) NON-REPORTABLE			
	13-Sep	6-Sep	30-Aug	23-Aug	13-Sep	6-Sep	30-Aug	23-Aug	13-Sep	6-Sep	30-Aug	23-Aug
	WHEAT											
Chicago	(60.6)	(61.4)	(60.0)	(54.6)	(53.6)	(52.0)	(56.0)	(60.6)	(3.8)	(2.6)	(2.2)	(2.8)
Kansas City	(48.2)	(41.8)	(41.8)	(39.4)	(3.0)	(9.2)	(9.2)	(11.7)	(0.4)	(0.1)	(1.0)	0.1
Minneapolis	-	-	-	-	-	-	-	-	-	-	-	-
All Wheat	(108.8)	(103.2)	(101.8)	(94.0)	(56.6)	(61.2)	(65.1)	(72.3)	(4.2)	(2.7)	(3.2)	(2.7)
CORN	(470.0)	(469.9)	(466.1)	(439.2)	159.5	153.0	147.1	120.9	(60.3)	(55.0)	(56.9)	(55.6)
OATS	-	-	-	-	-	-	-	-	-	-	-	-
SOYBEANS	(147.5)	(136.6)	(141.7)	(149.8)	51.0	33.4	33.5	39.1	(35.4)	(36.3)	(35.9)	(32.6)
SOY OIL	(134.0)	(122.5)	(131.0)	(124.1)	19.8	13.6	18.6	11.6	10.4	7.0	9.3	9.8
SOY MEAL	(210.0)	(197.7)	(212.6)	(219.8)	67.7	57.6	67.9	72.0	25.7	21.1	23.4	25.8

	TOTAL OPEN INTEREST				(INDEX) COMMERCIAL INDEX TRADERS				(INDEX) % NET OF TOTAL OPEN INTEREST			
	13-Sep	6-Sep	30-Aug	23-Aug	13-Sep	6-Sep	30-Aug	23-Aug	13-Sep	6-Sep	30-Aug	23-Aug
	WHEAT											
Chicago	373,189	363,699	362,465	432,194	118.0	116.0	118.1	118.0	31.6%	31.9%	32.6%	27.3%
Kansas City	165,458	160,602	159,411	176,942	51.5	51.1	51.9	51.0	31.2%	31.8%	32.6%	28.8%
Minneapolis	-	-	-	-	-	-	-	-	-	-	-	-
All Wheat	538,647	524,301	521,876	609,136	169.6	167.1	170.1	169.0	31.5%	31.9%	32.6%	27.7%
CORN	1,792,121	1,730,634	1,716,908	1,848,801	370.9	371.9	375.9	373.8	20.7%	21.5%	21.9%	20.2%
OATS	-	-	-	-	-	-	-	-	-	-	-	-
SOYBEANS	794,029	741,820	741,434	789,452	131.9	139.5	144.2	143.3	16.6%	18.8%	19.4%	18.1%
SOY OIL	449,801	439,474	439,383	472,042	103.8	101.9	103.1	102.7	23.1%	23.2%	23.5%	21.8%
SOY MEAL	428,745	431,875	435,028	474,763	116.6	119.0	121.4	122.1	27.2%	27.5%	27.9%	25.7%

SOURCE: CFTC & FI

NET POSITION FUTURES AND OPTIONS OF SPECULATORS AND INDEX FUNDS IN COMBINED SRW, HRW, CORN, SOYBEANS, SOYMEAL AND SOYOIL



Source: CFTC and FI

○ Net Index

— Net Speculator

Traditional Daily Estimate of Funds 9/13/22

	(Neg)-"Short"	Pos-"Long"			
Actual less Est.	1.1	(3.2)	(25.3)	(5.4)	0.8
	Corn	Bean	Chi. Wheat	Meal	Oil
Actual	294.6	92.1	(8.1)	114.2	54.6
14-Sep	(9.0)	(10.0)	4.0	0.0	(5.0)
15-Sep	(4.0)	(3.0)	(15.0)	3.0	(2.0)
16-Sep	(1.0)	(3.0)	4.0	(4.0)	4.0
19-Sep					
20-Sep					
FI Est. of Futures Only 9/13/22	280.6	76.1	(15.1)	113.2	51.6
FI Est. Futures & Options	272.0	82.6	(17.5)	105.5	49.5
Futures only record long "Traditional Funds"	547.7 1/26/2021	280.9 11/10/2020	86.5 8/7/2018	167.5 5/1/2018	160.2 11/1/2016
Futures only record short	(235.0) 6/9/2020	(118.3) 4/30/2019	(130.0) 4/25/2017	(49.5) 3/1/2016	(69.8) 9/18/2018
Futures and options record net long	557.6 1/12/2021	270.9 10/6/2020	64.8 8/7/2012	132.1 5/1/2018	159.2 1/1/2016
Futures and options record net short	(270.6) 4/26/2019	(132.0) 4/30/2019	(143.3) 4/25/2017	(64.1) 3/1/2016	(77.8) 9/18/2018

Managed Money Daily Estimate of Funds 9/13/22

	Corn	Bean	Chi. Wheat	Meal	Oil
Latest CFTC Fut. Only	227.7	114.8	(22.7)	87.4	54.9
Latest CFTC F&O	240.6	112.1	(20.4)	87.7	55.3
FI Est. Managed Fut. Only	214	99	(30)	86	52
FI Est. Managed Money F&O	227	96	(27)	87	52

Index Funds Latest Positions (as of last Tuesday)

Index Futures & Options	370.9	131.9	118.0	NA	103.8
Change From Previous Week	(1.0)	(7.6)	2.0	NA	1.9

Source: Reuters, CFTC & FI (FI est. are noted with latest date)

Disclaimer

TO CLIENTS/PROSPECTS OF FUTURES INTERNATIONAL, SEE RISK DISCLOSURE BELOW:

THIS COMMUNICATION IS CONVEYED AS A SOLICITATION FOR ENTERING INTO A DERIVATIVES TRANSACTION.

Any trading recommendations and market or other information to Customer by Futures International (FI), although based upon information obtained from sources believed by FI to be reliable may not be accurate and may be changed without notice to customer. FI makes no guarantee as to the accuracy or completeness of any of the information or recommendations furnished to Customer. Customer understands that FI, its managers, employees and/or affiliates may have a position in commodity futures, options or other derivatives which may not be consistent with the recommendations furnished by FI to Customer.

The risk of trading futures and options and other derivatives involves a substantial risk of loss and is not suitable for all persons. In purchasing an option, the risk is limited to the premium paid, and all commissions and fees involved with the trade. When an option is shorted or written, the writer of the option has unlimited risk with respect to the option written. The use of options strategies such as a straddles and strangles involve multiple option positions and may substantially increase the amount of commissions and fees paid to execute the strategy. Option prices do not necessarily move in tandem with cash or futures prices. Each person must consider whether a particular trade, combination of trades or strategy is suitable for that person's financial means and objectives.

This material may include discussions of seasonal patterns, however, futures prices have already factored in the seasonal aspects of supply and demand, and seasonal patterns are no indication of future market trends. Finally, past performance is not indicative of future results.

This communication may contain links to third party websites which are not under the control of FI and FI is not responsible for their content. Products and services are offered only in jurisdictions where solicitation and sale are lawful, and in accordance with applicable laws and regulations in each such jurisdiction.