

CFTC COMMITMENT OF TRADERS REPORT

As of 9/20/2022

TRADITIONAL FUNDS net position changes

Wed to Tue, in 000 contracts

	Corn	Bean	Meal	Oil	Chi. Wheat	KC Wheat	Min Wheat
Futures Only	11.1	(7.3)	12.3	2.8	4.1	2.9	2.9
Futures & Options Combined	16.2	(8.4)	14.4	2.6	4.2	3.0	2.9

TRADITIONAL COMMERCIAL net position changes

	Corn	Bean	Meal	Oil	Chi. Wheat	KC Wheat	Min Wheat
Futures Only	(7.1)	5.9	(14.1)	(2.3)	(3.0)	(2.0)	(3.4)
Futures & Options Combined	(10.0)	7.5	(16.2)	(2.1)	(3.0)	(2.2)	(3.5)

MANAGED MONEY net position changes

	Corn	Bean	Meal	Oil	Chi. Wheat	KC Wheat	Min Wheat
Futures Only	8.5	(7.3)	13.4	3.0	4.5	1.9	2.5
Futures & Options Combined	7.3	(7.4)	14.5	3.0	4.7	2.1	2.5

SWAP DEALERS net position changes

	Corn	Bean	Meal	Oil	Chi. Wheat	KC Wheat	Min Wheat
Futures Only	(4.3)	(3.5)	(1.0)	3.0	(0.7)	(0.4)	(0.1)
Futures & Options Combined	(3.3)	(3.5)	(2.0)	2.9	(1.0)	(0.5)	(0.1)

PRODUCERS/END USERS net position changes

	Corn	Bean	Meal	Oil	Chi. Wheat	KC Wheat	Min Wheat
Futures Only	(2.8)	9.4	(13.1)	(5.3)	(2.3)	(1.6)	(3.3)
Futures & Options Combined	(6.7)	11.0	(14.3)	(5.0)	(2.0)	(1.7)	(3.3)

INDEX net position changes

	Corn	Bean	Meal	Oil	Chi. Wheat	KC Wheat	Min Wheat
Futures & Options Combined	0.5	1.2	0.9	0.9	(2.1)	(0.2)	NA

SUPPLEMENTAL NON-COMMERCIAL net position changes

	Corn	Bean	Meal	Oil	Chi. Wheat	KC Wheat	Min Wheat
Futures & Options Combined	13.9	(9.3)	12.5	1.3	6.1	3.1	NA

OPEN INTEREST net position changes

Wed to Tue, in 000 contracts

	Corn	Bean	Meal	Oil	Chi. Wheat	KC Wheat	Min Wheat
Futures Only	20.4	13.3	8.6	6.0	(1.5)	5.1	6.6
Futures & Options Combined	25.4	14.8	16.7	4.8	14.6	6.8	7.1

Source: CFTC and FI

Wed to Tue, in 000 contracts

9/24/2022

**COMMITMENT OF TRADERS
FUTURES ONLY NET POSITIONS
AS OF 09/20/2022
(IN THOUSAND CONTRACTS)**

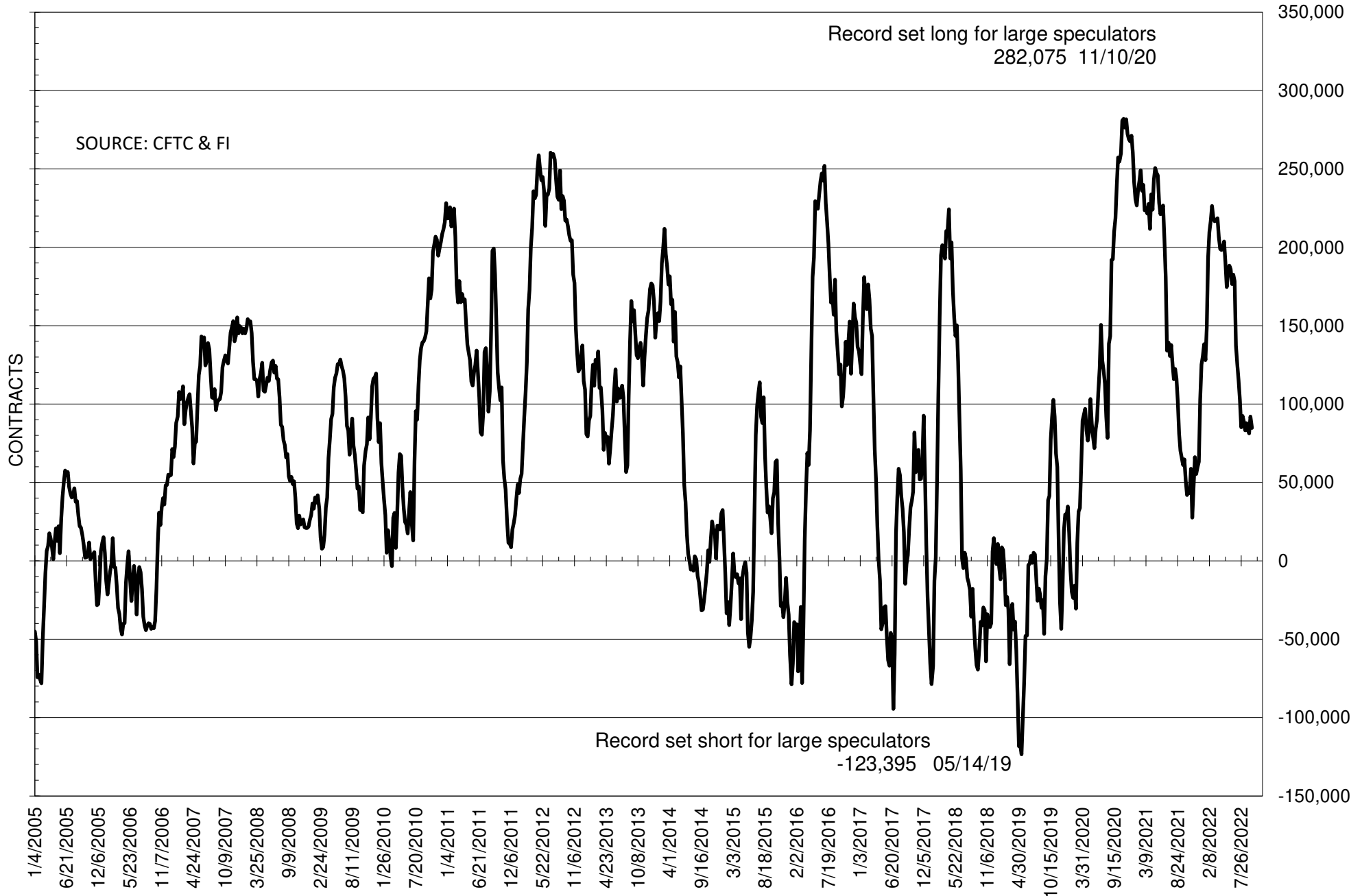
	COMMERCIAL				(FUND) NON COMMERCIAL				(SPEC) NON-REPORTABLE			
	20-Sep	13-Sep	6-Sep	30-Aug	20-Sep	13-Sep	6-Sep	30-Aug	20-Sep	13-Sep	6-Sep	30-Aug
	WHEAT											
Chicago	10.0	13.0	13.7	14.9	-4.0	-8.1	-9.8	-11.5	-6.0	-4.8	-3.9	-3.4
Kansas City	-15.3	-13.3	-7.5	-7.1	17.1	14.2	8.1	8.5	-1.8	-0.9	-0.5	-1.3
Minneapolis	-5.1	-1.7	-0.5	-0.1	5.6	2.7	2.5	1.9	-0.5	-1.0	-2.0	-1.8
All Wheat	-10.4	-2.0	5.6	7.7	18.6	8.8	0.8	-1.1	-8.2	-6.7	-6.5	-6.6
CORN	-241.2	-234.2	-230.7	-225.8	305.7	294.6	286.5	283.4	-64.4	-60.4	-55.8	-57.6
OATS	-0.7	-0.6	-0.5	-0.4	0.0	0.1	0.0	0.1	0.7	0.5	0.5	0.2
SOYBEANS	-55.5	-61.4	-50.8	-52.8	84.8	92.1	81.3	83.6	-29.3	-30.7	-30.4	-30.8
SOY OIL	-66.7	-64.4	-55.1	-62.7	57.4	54.6	48.8	54.0	9.3	9.8	6.4	8.8
SOY MEAL	-151.9	-137.8	-126.6	-137.8	126.5	114.2	107.1	116.2	25.4	23.6	19.5	21.6

Oats positions thin to be reported

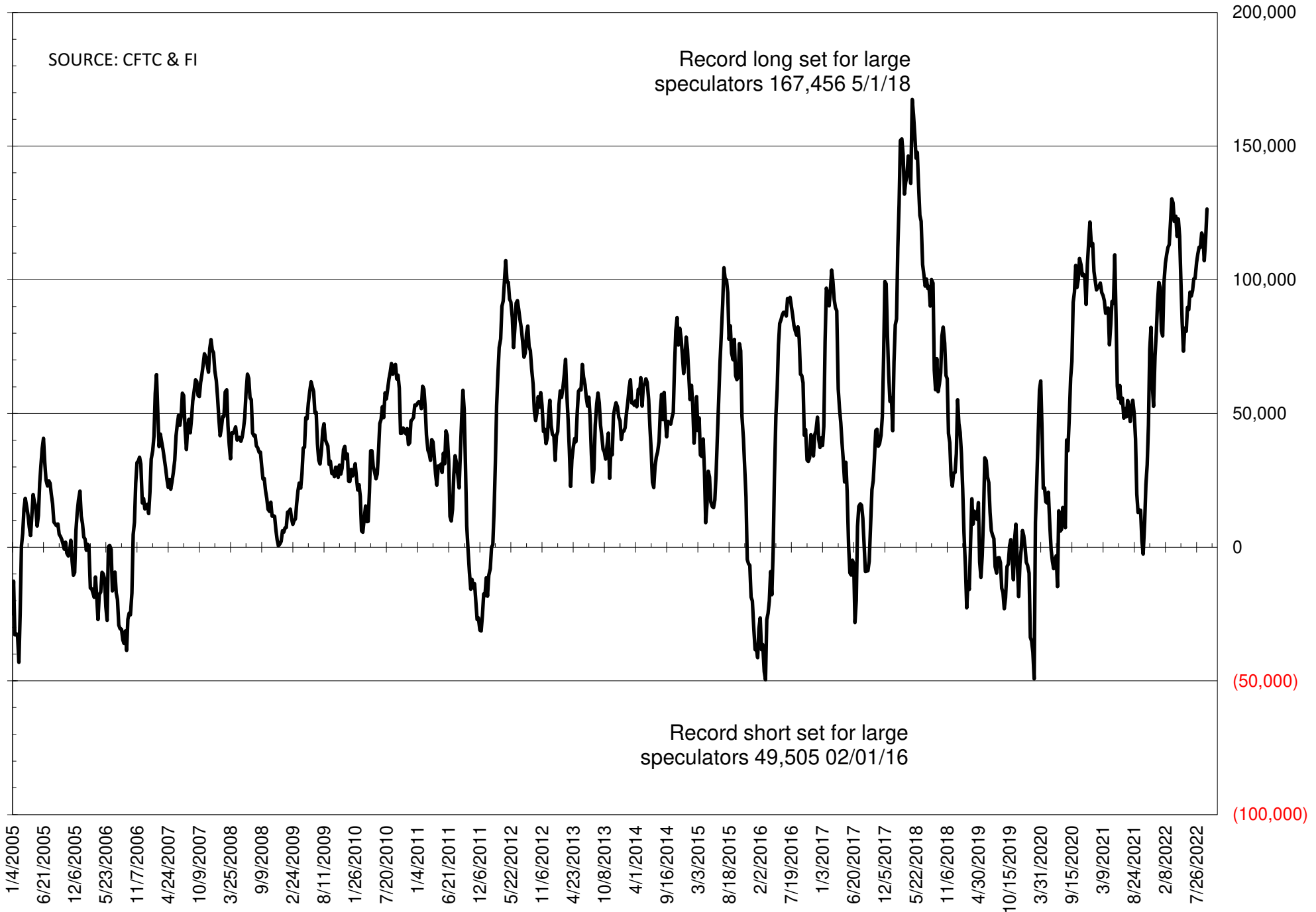
	TOTAL OPEN INTEREST				NEARBY FUTURES PRICE					20-Sep-22 LAST REPORTED % HELD BY TRADERS			
	20-Sep	13-Sep	6-Sep	30-Aug	V/X/Z Latest	V/X/Z 20-Sep	V/X/Z 13-Sep	V/X/Z 6-Sep	V/X/Z 30-Aug	LARGE FUND		SMALL	
										LONG	SHORT	LONG	SHORT
WHEAT													
Chicago	285567	287046	289329	288545	880.50	893.75	842.75	817.00	820.25	0%	32%	0%	12%
Kansas City	154904	149786	146259	145155	950.50	963.00	944.00	882.00	897.75	0%	20%	0%	13%
Minneapolis	54915	48272	45971	45136	949.25	959.25	928.50	889.75	921.00	0%	9%	0%	18%
CORN	1330841	1310411	1280087	1267735	676.75	692.00	709.00	676.00	677.25	0%	10%	0%	14%
OATS	3733	3724	3489	3238	395.00	413.25	416.50	383.75	398.00	0%	16%	0%	30%
SOYBEANS	656310	643018	606187	605924	1425.75	1478.75	1478.75	1398.75	1432.50	24%	11%	6%	11%
SOY OIL	404366	398345	393510	390796	67.00	68.59	68.93	64.90	67.69	0%	8%	0%	6%
SOY MEAL	392512	383899	389152	391177	439.90	450.80	428.90	410.60	429.80	0%	3%	0%	6%

SOURCE: CFTC & FI

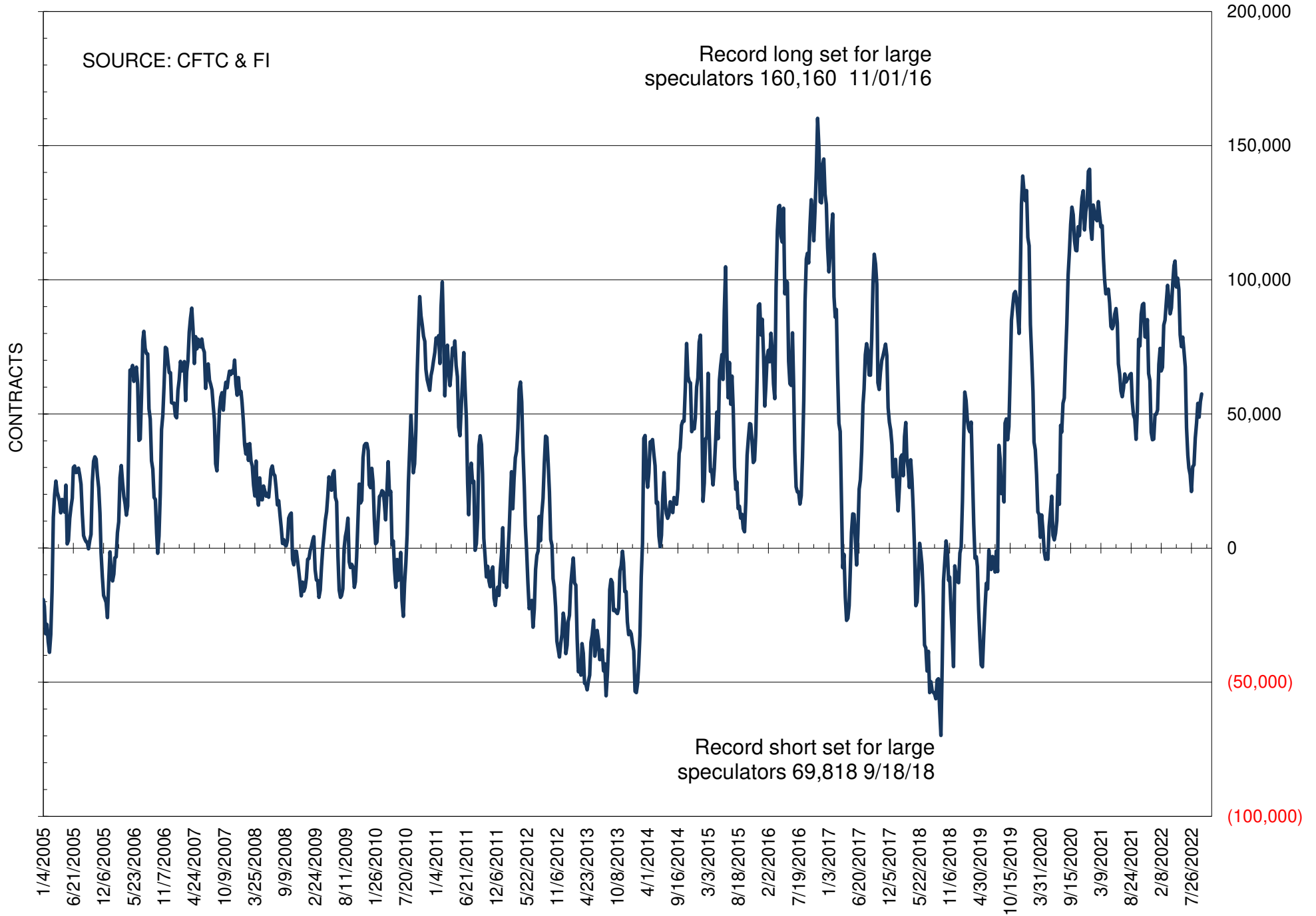
NET POSITION OF FUTURES ONLY LARGE SPECS IN SOYBEANS



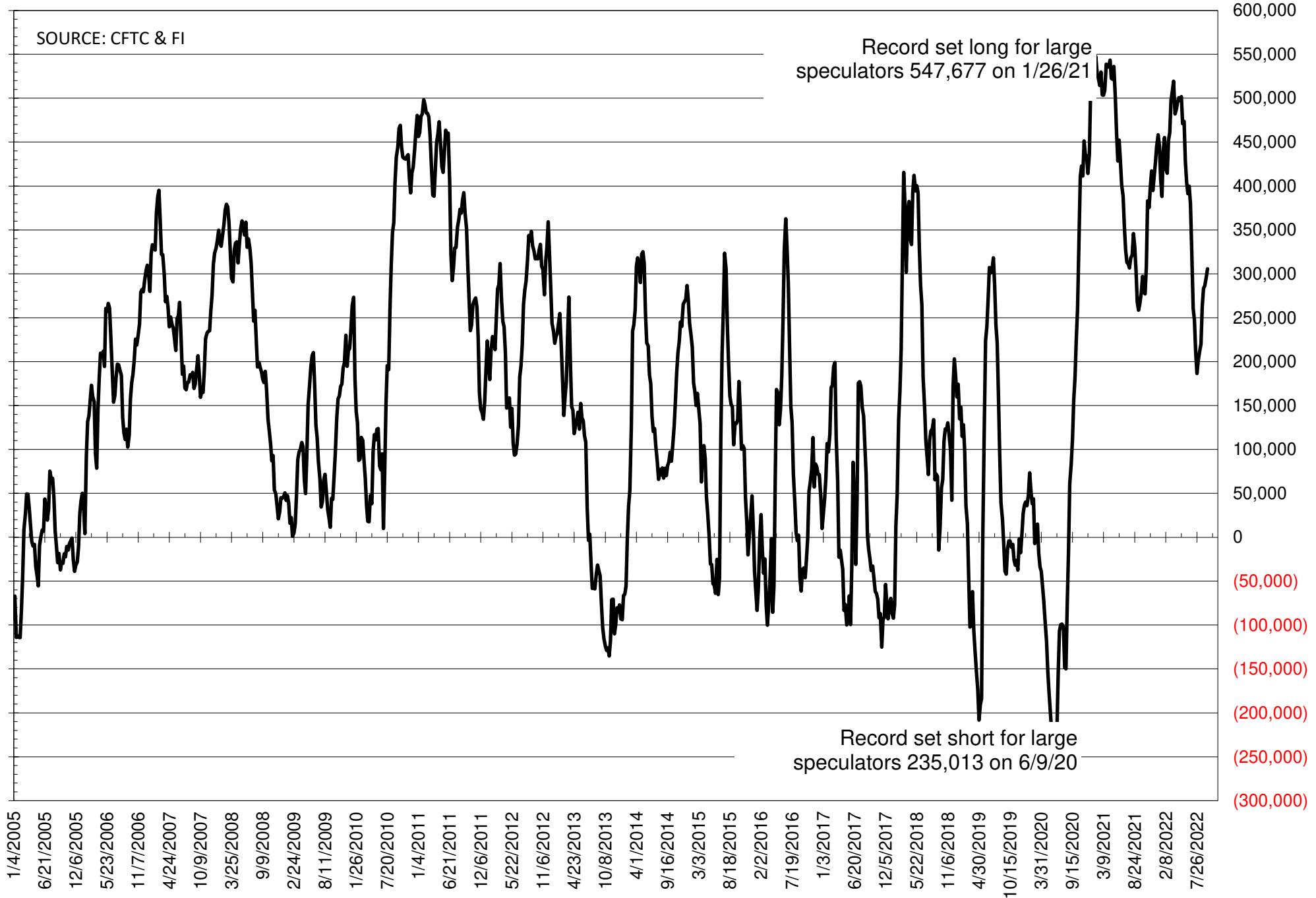
NET POSITION OF FUTURES ONLY LARGE SPECS IN SOYMEAL



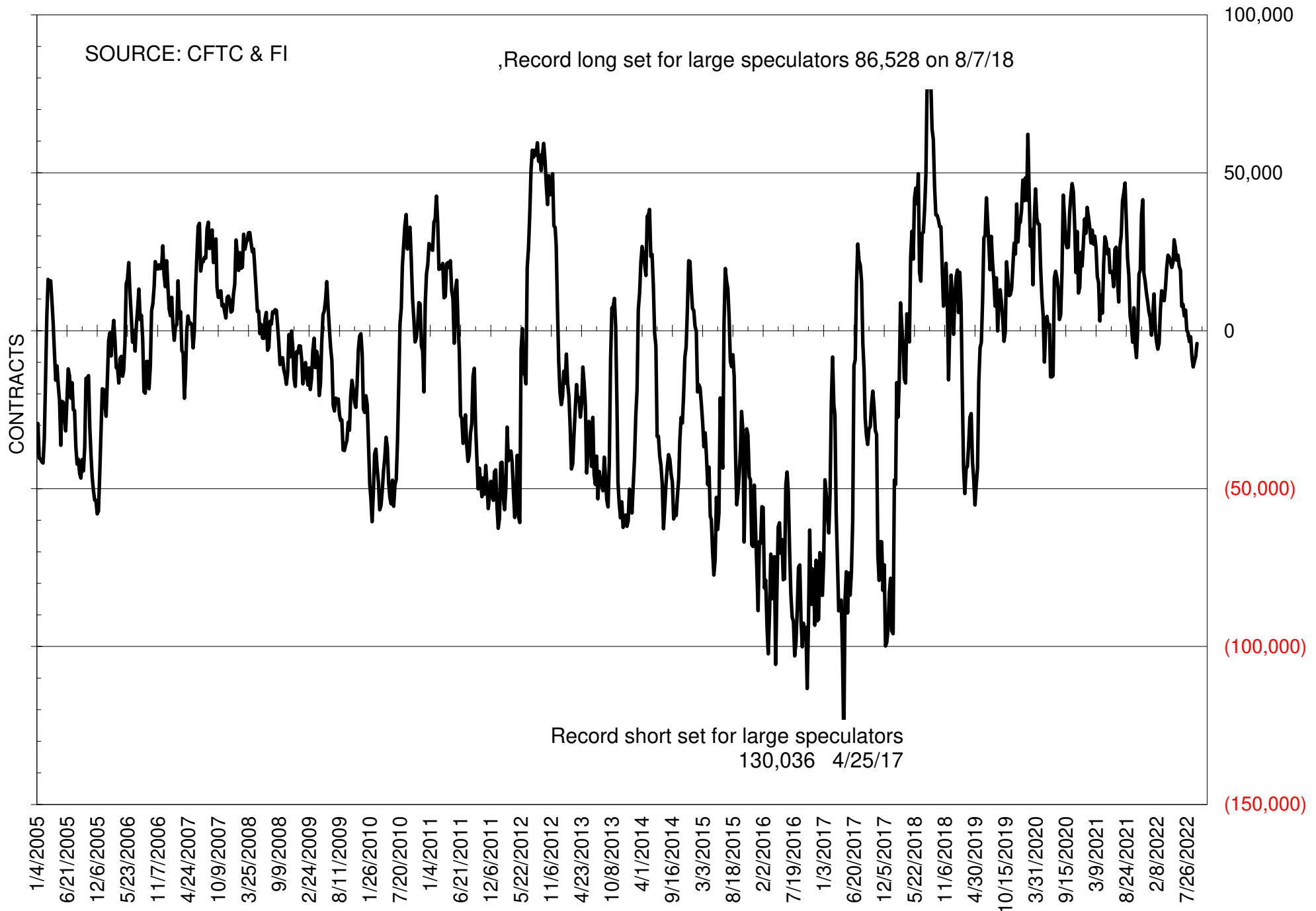
NET POSITION OF FUTURES ONLY LARGE SPECS IN SOYOIL



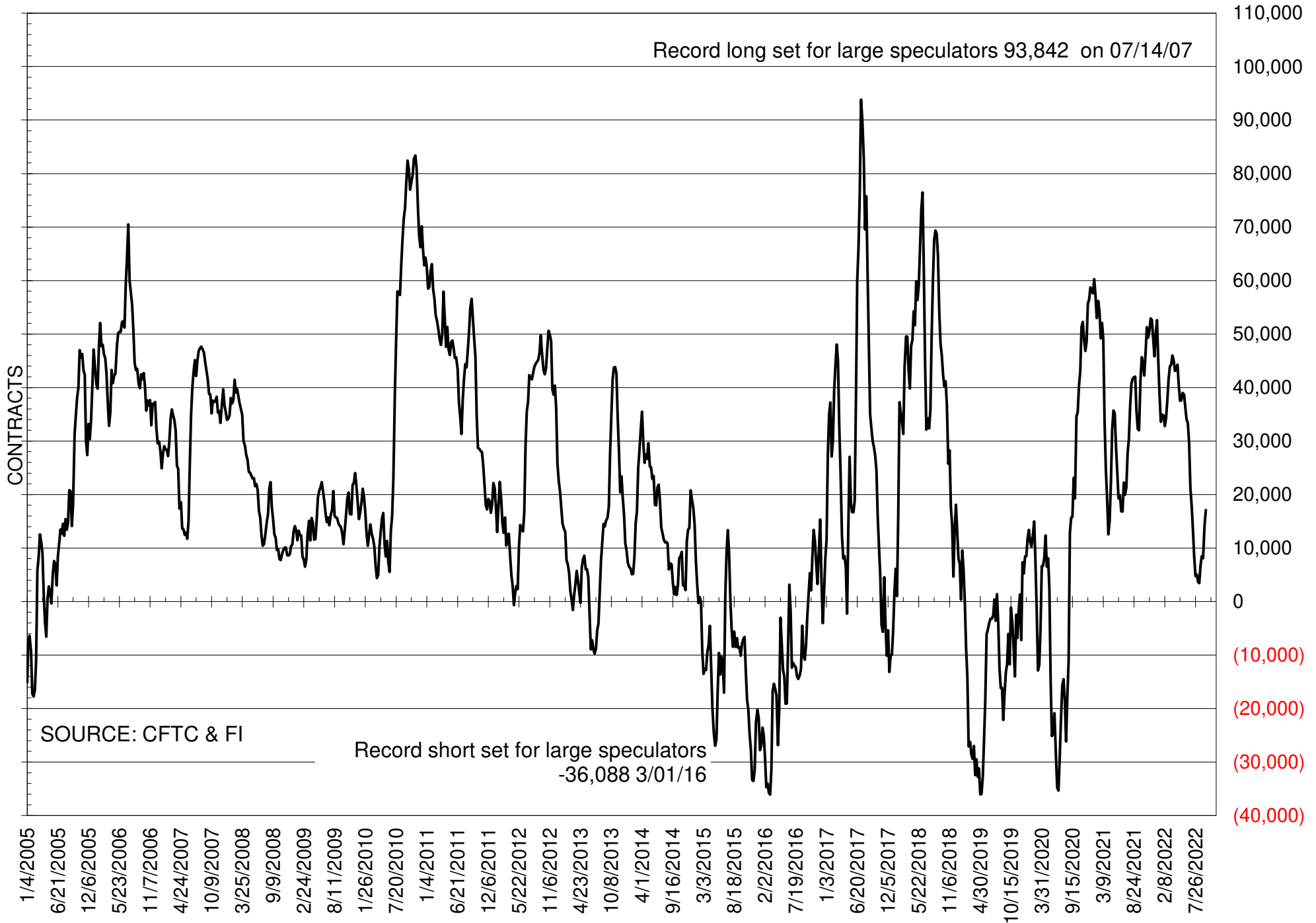
NET POSITION OF LARGE SPECULATORS IN CORN



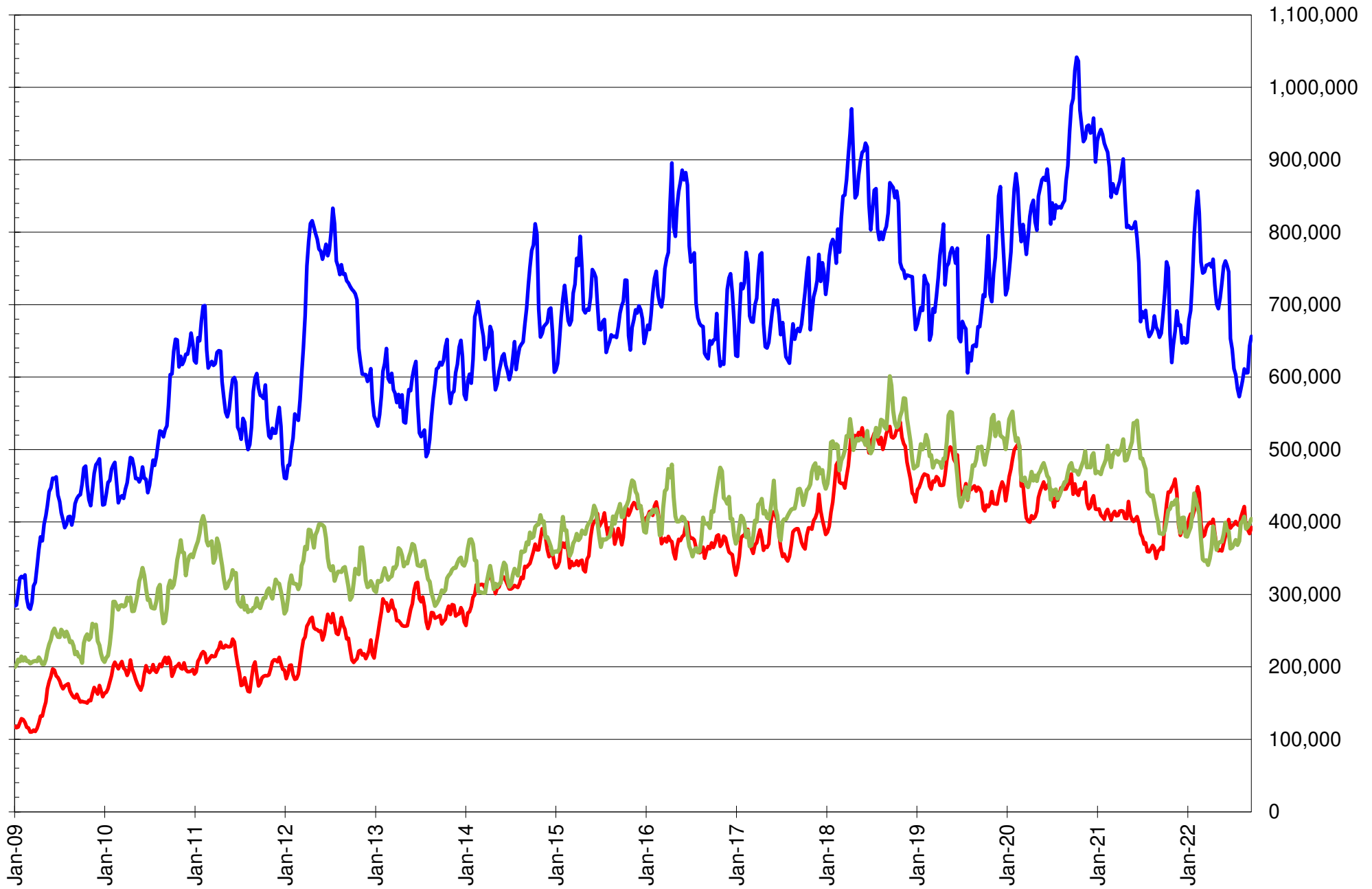
NET POSITION OF FUTURES ONLY LARGE SPECS IN CHICAGO WHEAT



NET POSITION OF LARGE SPECULATORS IN KANSAS CITY WHEAT



TOTAL OPEN INTEREST IN SOYBEANS, MEAL AND OIL, FUTURES ONLY



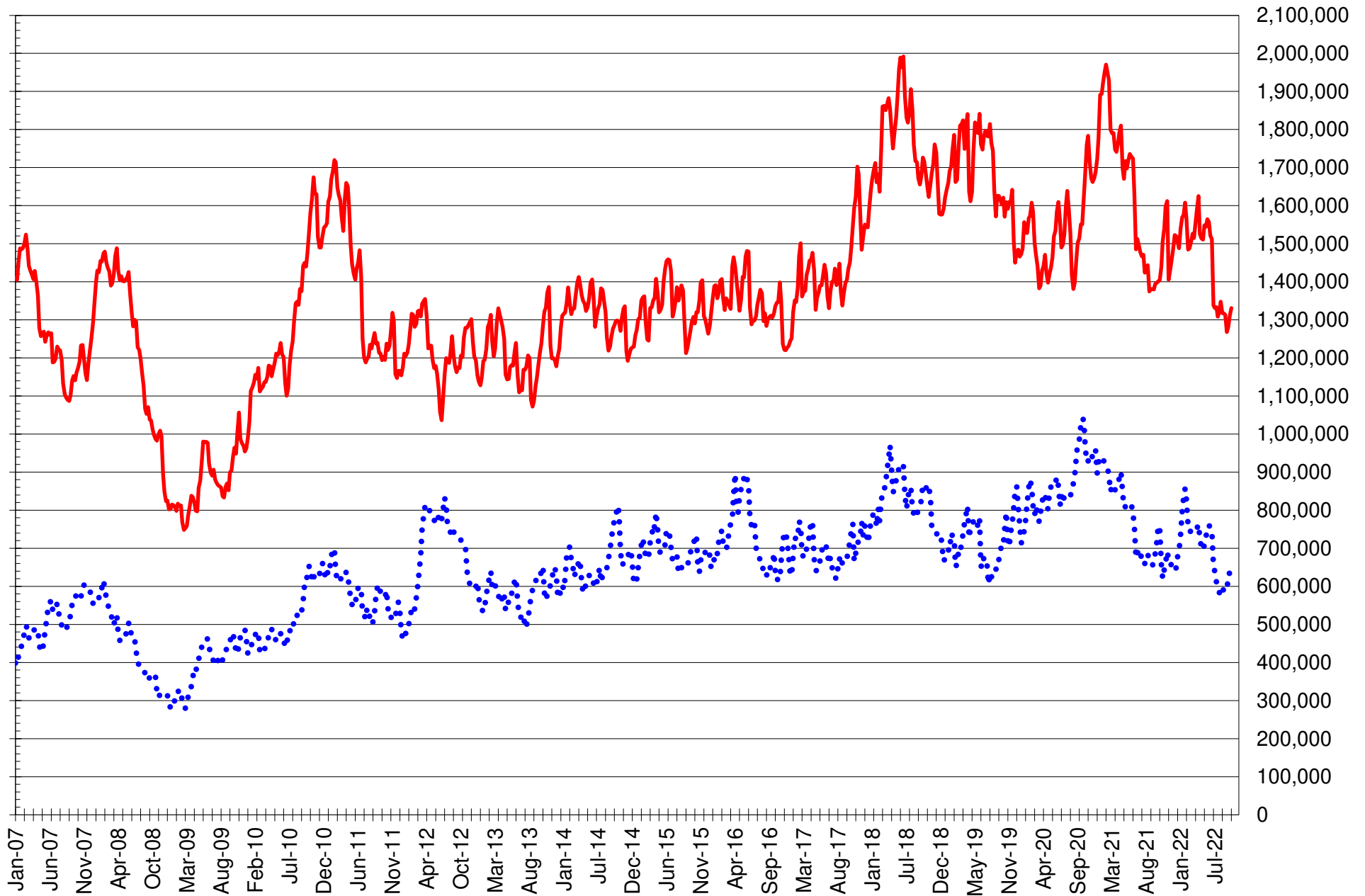
SOURCE: CFTC & FI

— SOYBEANS

— SOYBEAN MEAL

— SOYBEAN OIL

TOTAL OPEN INTEREST IN CORN AND SOYBEANS, FUTURES ONLY



SOURCE: CFTC & FI

— CORN

•••• SOYBEANS

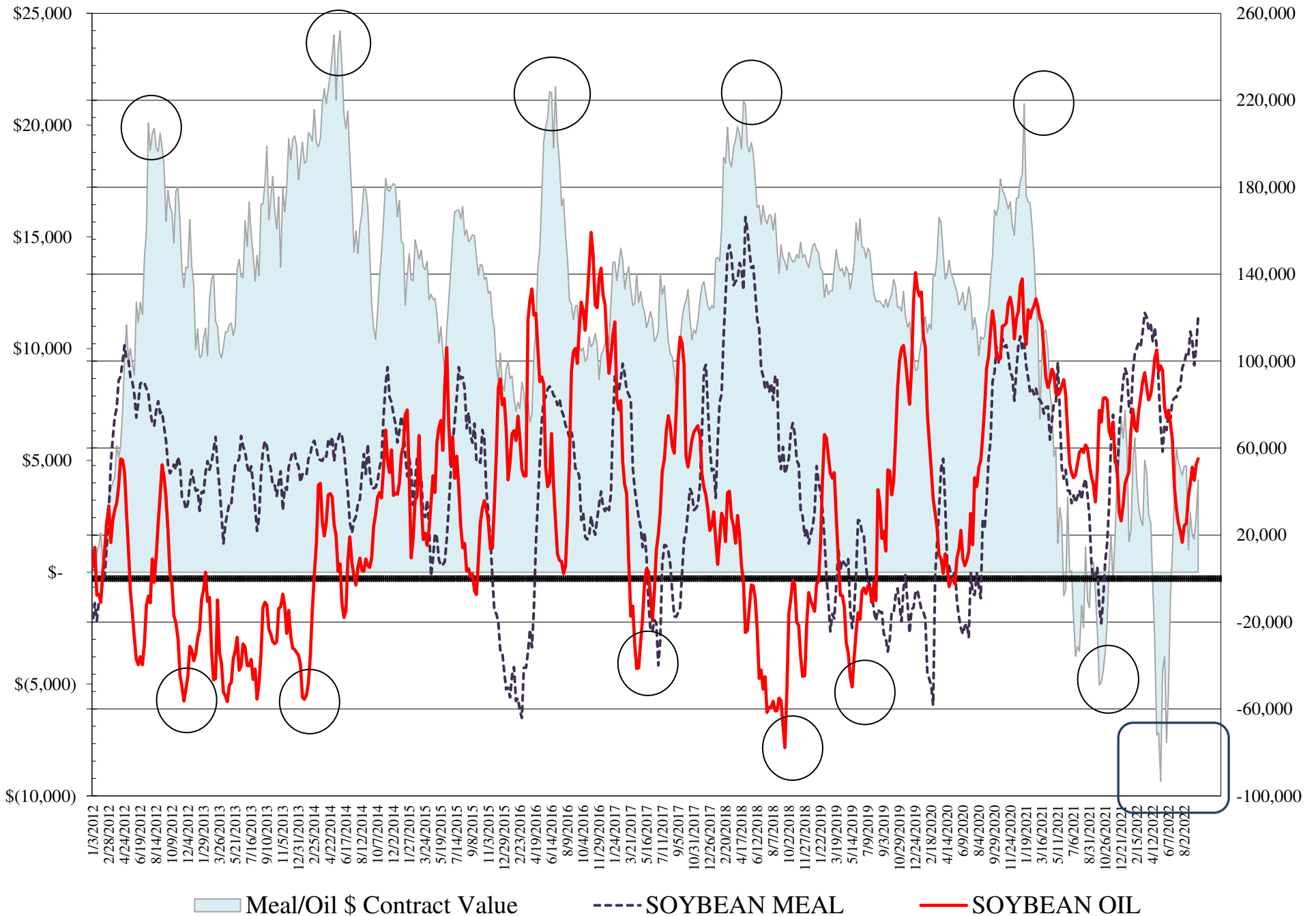
**COMMITMENT OF TRADERS
FUTURES & OPTIONS NET POSITIONS
AS OF 09/20/2022
(IN THOUSAND CONTRACTS)**

	COMMERCIAL				(FUND) NON COMMERCIAL				(SPEC) NON-REPORTABLE			
	20-Sep	13-Sep	6-Sep	30-Aug	20-Sep	13-Sep	6-Sep	30-Aug	20-Sep	13-Sep	6-Sep	30-Aug
WHEAT												
Chicago	11.4	14.4	12.8	13.5	-6.4	-10.6	-10.2	-11.3	-5.1	-3.8	-2.6	-2.2
Kansas City	-16.5	-14.3	-8.1	-7.6	17.7	14.6	8.2	8.6	-1.2	-0.4	-0.1	-1.0
Minneapolis	-5.0	-1.6	-0.3	0.4	5.4	2.5	2.3	1.4	-0.4	-0.9	-2.0	-1.8
All Wheat	-10.1	-1.4	4.4	6.3	16.7	6.6	0.3	-1.3	-6.6	-5.1	-4.7	-5.0
CORN	-235.7	-225.7	-223.4	-219.7	302.2	286.0	278.3	276.6	-66.5	-60.3	-55.0	-56.9
OATS	-0.7	-0.6	-0.4	-0.3	-0.1	0.0	-0.1	0.0	0.8	0.6	0.5	0.3
SOYBEANS	-55.8	-63.2	-50.1	-55.0	90.2	98.6	86.4	90.9	-34.4	-35.4	-36.3	-35.9
SOY OIL	-65.0	-62.9	-52.1	-60.6	55.1	52.5	45.1	51.2	9.9	10.4	7.0	9.3
SOY MEAL	-148.5	-132.3	-119.2	-132.8	120.9	106.5	98.1	109.4	27.6	25.7	21.1	23.4

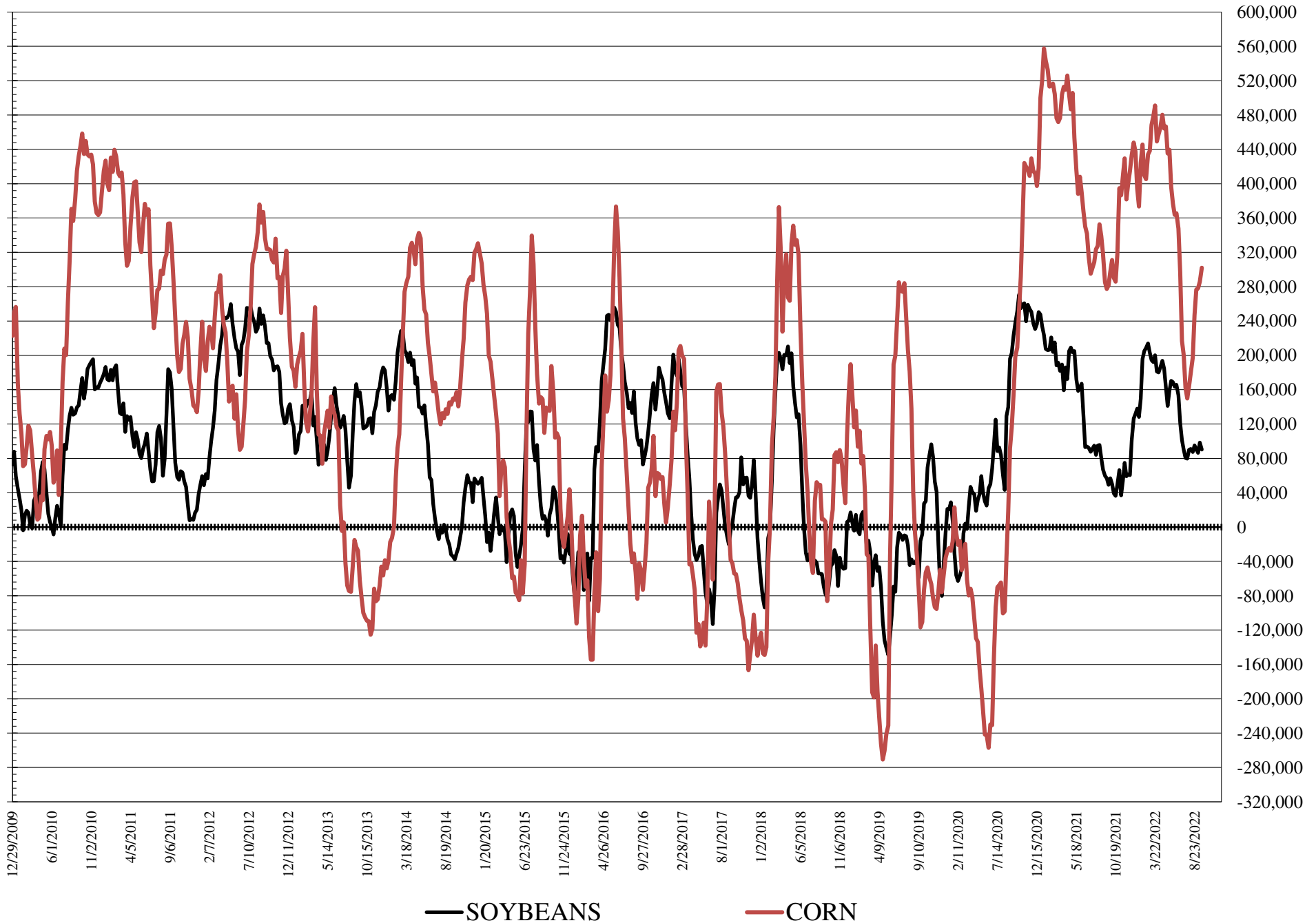
	TOTAL OPEN INTEREST				COMMERCIALS		% HELD BY TRADERS LARGE (FUNDS)		SMALL (NON-REP)	
	20-Sep	13-Sep	6-Sep	30-Aug	LONG	SHORT	LONG	SHORT	LONG	SHORT
WHEAT										
Chicago	387,820	373,189	363,699	362,465	36%	33%	22%	24%	8%	10%
Kansas City	172,256	165,458	160,602	159,411	42%	52%	28%	17%	12%	12%
Minneapolis	57,448	50,363	47,914	47,123	57%	65%	18%	9%	17%	18%
CORN	1,817,528	1,792,121	1,730,634	1,716,908	38%	51%	22%	5%	9%	13%
OATS	3,870	3,860	3,618	3,377						
SOYBEANS	808,861	794,029	741,820	741,434	48%	55%	19%	8%	6%	10%
SOY OIL	454,576	449,801	439,474	439,383	48%	62%	19%	7%	7%	5%
SOY MEAL	445,424	428,745	431,875	435,028	38%	72%	30%	3%	13%	6%

SOURCE: CFTC & FI

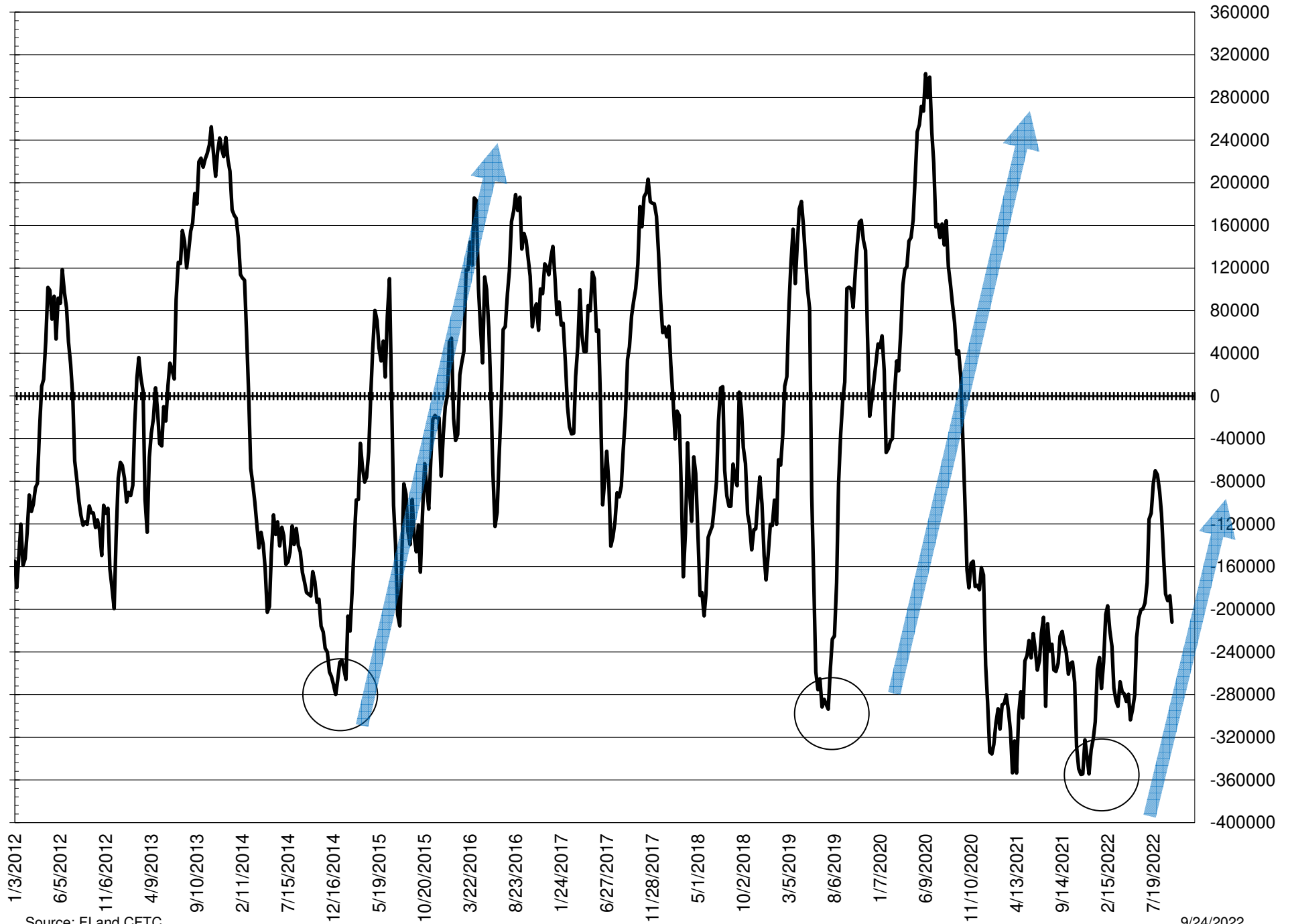
NET POSITION FUTURES AND OPTIONS OF LARGE SPECULATORS IN SOYBEAN MEAL AND SOYBEAN OIL



NET POSITION FUTURES AND OPTIONS OF LARGE SPECULATORS IN SOYBEANS AND CORN



NET POSITION FUTURES AND OPTIONS SPREAD OF LARGE SPECULATORS IN SOYBEANS MINUS CORN



Source: FI and CFTC

9/24/2022

**DISAGGREGATED COMMITMENT OF TRADERS
FUTURES ONLY NET POSITIONS
AS OF 09/20/2022
(IN THOUSAND CONTRACTS)**

	PRODUCER / MERCHANT / PROCESSOR / USER				(INDEX/ETF) SWAP DEALERS				(CTA/CPO/OTHER UNREGISTERED) MANAGED MONEY					
					20-Sep	13-Sep	6-Sep	30-Aug	20-Sep	13-Sep	6-Sep	30-Aug	20-Sep	13-Sep
	WHEAT													
Chicago	(50.3)	(48.0)	(48.9)	(46.8)	60.3	61.0	62.6	61.8	(18.1)	(22.7)	(23.4)	(23.9)		
Kansas City	(43.2)	(41.6)	(35.4)	(35.0)	27.9	28.3	27.9	27.9	18.8	16.9	11.1	12.4		
Minneapolis	(6.2)	(3.0)	(1.9)	(1.6)	1.2	1.3	1.4	1.6	2.4	(0.2)	(1.0)	(1.4)		
All Wheat	(99.8)	(92.5)	(86.2)	(83.5)	89.3	90.5	91.8	91.2	3.0	(5.9)	(13.4)	(13.0)		
CORN	(473.2)	(470.4)	(468.7)	(461.4)	232.0	236.2	238.0	235.7	236.2	227.7	210.2	205.2		
OATS	(1.0)	(0.9)	(0.6)	(0.5)	0.3	0.2	0.2	0.1	(0.6)	(0.5)	(0.6)	(0.4)		
SOYBEANS	(131.3)	(140.7)	(133.8)	(137.1)	75.8	79.3	83.0	84.3	107.5	114.8	99.6	104.1		
SOY OIL	(155.5)	(150.2)	(141.6)	(146.8)	88.8	85.8	86.4	84.1	57.9	54.9	43.7	48.7		
SOY MEAL	(235.9)	(222.8)	(213.3)	(225.2)	84.1	85.0	86.6	87.4	100.7	87.4	81.2	92.3		
Managed % of OI														
										Chicago W	-6%	-8%	-8%	-8%
										Corn	18%	17%	16%	16%
TOTAL														
	OPEN INTEREST				OTHER REPORTABLE				NON REPORTABLE					
	20-Sep	13-Sep	6-Sep	30-Aug	20-Sep	13-Sep	6-Sep	30-Aug	20-Sep	13-Sep	6-Sep	30-Aug		
WHEAT														
Chicago	285,567	287,046	289,329	288,545	14.1	14.5	13.7	12.4	(6.0)	(4.8)	(3.9)	(3.4)		
Kansas City	154,904	149,786	146,259	145,155	(1.7)	(2.6)	(3.0)	(3.9)	(1.8)	(0.9)	(0.5)	(1.3)		
Minneapolis	54,915	48,272	45,971	45,136	3.2	2.8	3.5	3.3	(0.5)	(1.0)	(2.0)	(1.8)		
All Wheat	495,386	485,104	481,559	478,836	15.6	14.7	14.3	11.8	(8.2)	(6.7)	(6.5)	(6.6)		
CORN	1,330,841	1,310,411	1,280,087	1,267,735	69.5	66.9	76.3	78.2	(64.4)	(60.4)	(55.8)	(57.6)		
OATS	3,733	3,724	3,489	3,238	0.6	0.6	0.6	0.6	0.7	0.5	0.5	0.2		
SOYBEANS	656,310	643,018	606,187	605,924	(22.7)	(22.7)	(18.3)	(20.6)	(29.3)	(30.7)	(30.4)	(30.8)		
SOY OIL	404,366	398,345	393,510	390,796	(0.5)	(0.4)	5.1	5.3	9.3	9.8	6.4	8.8		
SOY MEAL	392,512	383,899	389,152	391,177	25.7	26.8	25.9	23.9	25.4	23.6	19.5	21.6		

SOURCE: CFTC & FI

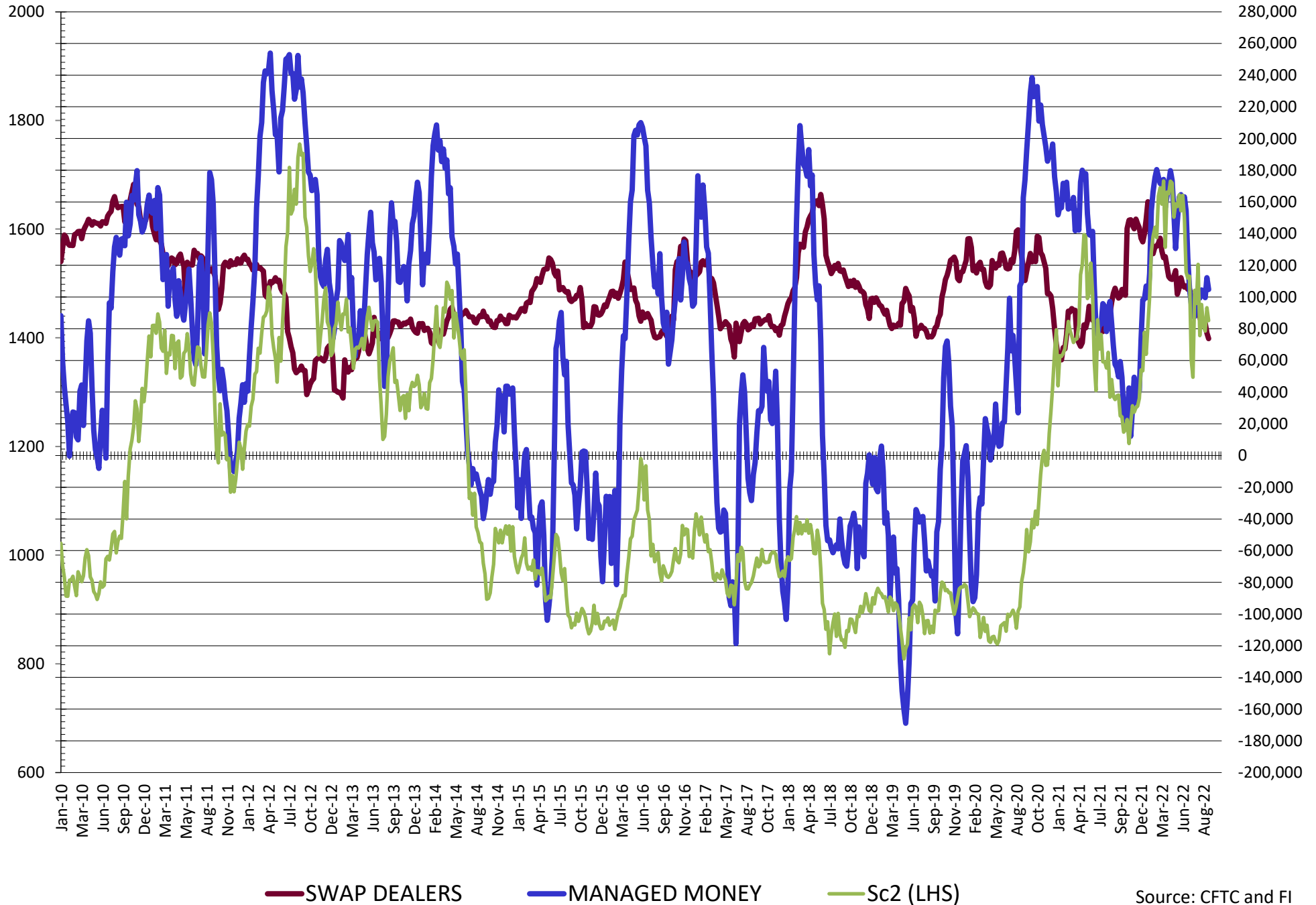
**DISAGGREGATED COMMITMENT OF TRADERS
FUTURES & OPTIONS NET POSITIONS
AS OF 09/20/2022
(IN THOUSAND CONTRACTS)**

	PRODUCER / MERCHANT / PROCESSOR / USER				(INDEX/ETF) SWAP DEALERS				(CTA/CPO/OTHER UNREGISTERED) MANAGED MONEY			
	20-Sep	13-Sep	6-Sep	30-Aug	20-Sep	13-Sep	6-Sep	30-Aug	20-Sep	13-Sep	6-Sep	30-Aug
	WHEAT											
Chicago	(54.3)	(52.3)	(53.9)	(52.1)	65.7	66.7	66.6	65.6	(15.7)	(20.4)	(21.4)	(22.2)
Kansas City	(44.1)	(42.4)	(36.0)	(35.4)	27.7	28.1	27.8	27.8	19.1	17.0	11.1	12.5
Minneapolis	(6.3)	(3.0)	(1.8)	(1.3)	1.3	1.4	1.6	1.7	2.4	(0.2)	(1.0)	(1.4)
All Wheat	(104.8)	(97.7)	(91.6)	(88.8)	94.7	96.3	96.0	95.1	5.7	(3.5)	(11.4)	(11.2)
CORN	(461.6)	(454.9)	(456.5)	(450.0)	225.9	229.2	233.2	230.3	247.9	240.6	226.5	221.5
OATS	(1.0)	(0.8)	(0.5)	(0.5)	0.3	0.2	0.2	0.1	(0.6)	(0.5)	(0.6)	(0.4)
SOYBEANS	(129.4)	(140.5)	(133.6)	(139.3)	73.7	77.2	83.5	84.3	104.7	112.1	99.6	101.8
SOY OIL	(155.8)	(150.8)	(140.4)	(146.5)	90.7	87.9	88.3	86.0	58.3	55.3	44.0	49.2
SOY MEAL	(232.5)	(218.3)	(207.5)	(221.4)	84.0	86.0	88.3	88.6	102.2	87.7	81.6	93.6

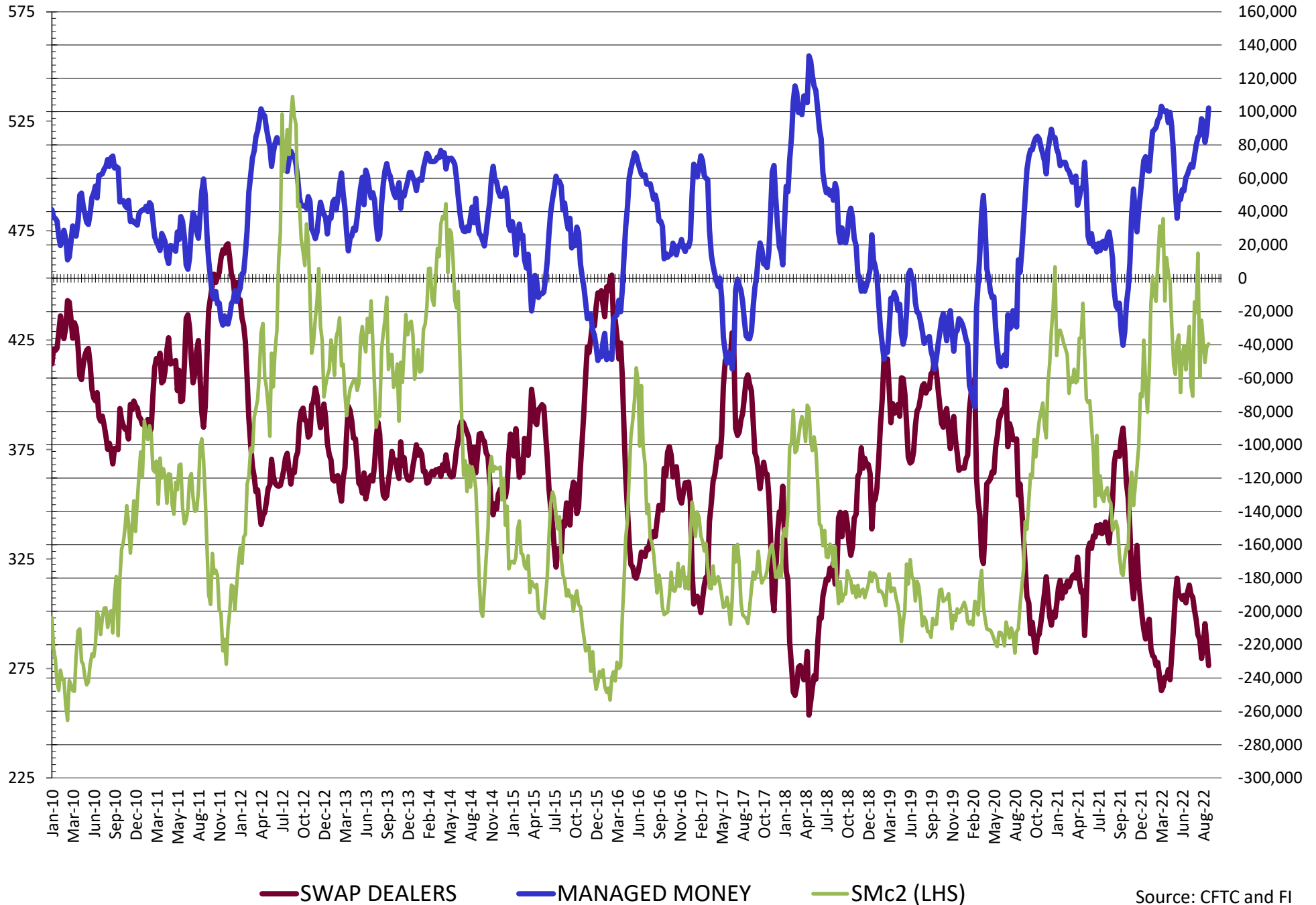
	TOTAL OPEN INTEREST				OTHER REPORTABLE				NON REPORTABLE			
	20-Sep	13-Sep	6-Sep	30-Aug	20-Sep	13-Sep	6-Sep	30-Aug	20-Sep	13-Sep	6-Sep	30-Aug
	WHEAT											
Chicago	387,820	373,189	363,699	362,465	9.3	9.8	11.3	11.0	(5.1)	(3.8)	(2.6)	(2.2)
Kansas City	172,256	165,458	160,602	159,411	(1.4)	(2.4)	(2.9)	(3.9)	(1.2)	(0.4)	(0.1)	(1.0)
Minneapolis	57,448	50,363	47,914	47,123	3.0	2.6	3.3	2.9	(0.4)	(0.9)	(2.0)	(1.8)
All Wheat	617,524	589,010	572,215	568,999	11.0	10.1	11.7	9.9	(6.6)	(5.1)	(4.7)	(5.0)
CORN	1,817,528	1,792,121	1,730,634	1,716,908	54.3	45.4	51.8	55.1	(66.5)	(60.3)	(60.3)	(60.3)
OATS	3,870	3,860	3,618	3,377	0.5	0.5	0.5	0.5	0.8	0.6	0.5	0.3
SOYBEANS	808,861	794,029	741,820	741,434	(14.5)	(13.5)	(13.2)	(10.9)	(34.4)	(35.4)	(36.3)	(35.9)
SOY OIL	454,576	449,801	439,474	439,383	(3.2)	(2.8)	1.2	2.0	9.9	10.4	7.0	9.3
SOY MEAL	445,424	428,745	431,875	435,028	18.7	18.8	16.5	15.7	27.6	25.7	21.1	23.4

SOURCE: CFTC & FI

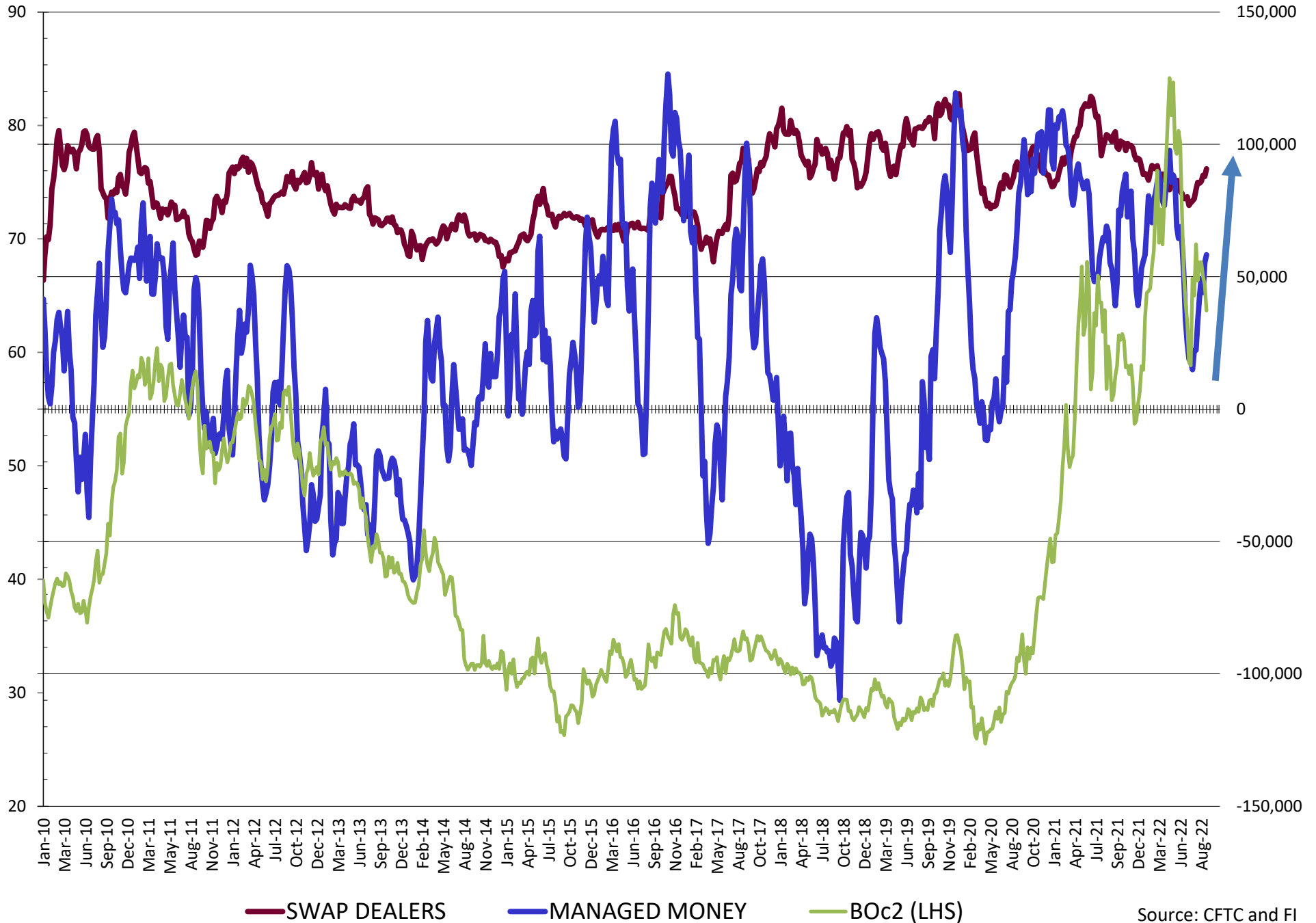
NET POSITION FUTURES AND OPTIONS OF SWAP AND MANAGED FUNDS IN SOYBEANS



NET POSITION FUTURES AND OPTIONS OF SWAP AND MANAGED FUNDS IN SOYBEAN MEAL

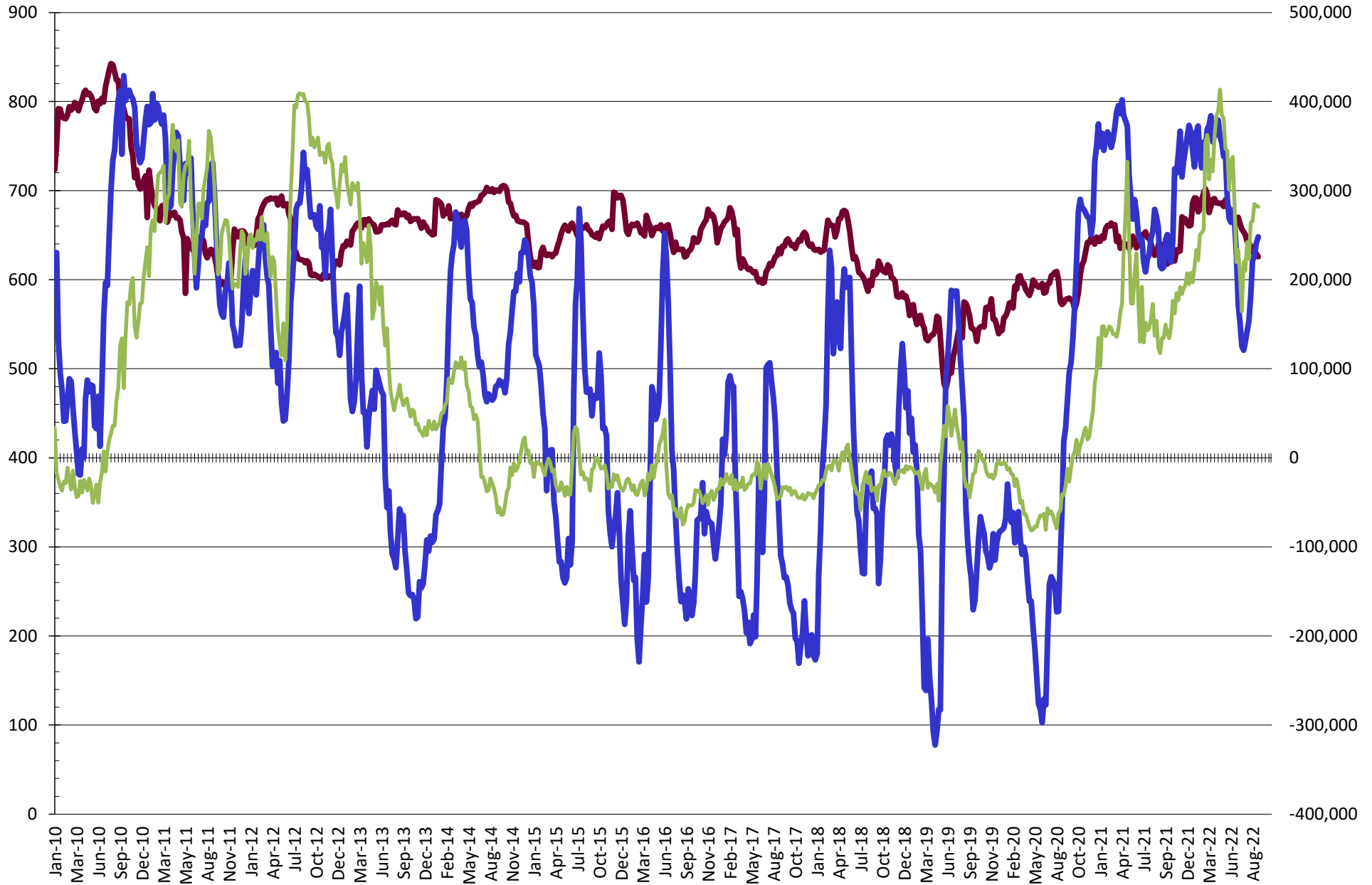


NET POSITION FUTURES AND OPTIONS OF SWAP AND MANAGED FUNDS IN SOYBEAN OIL



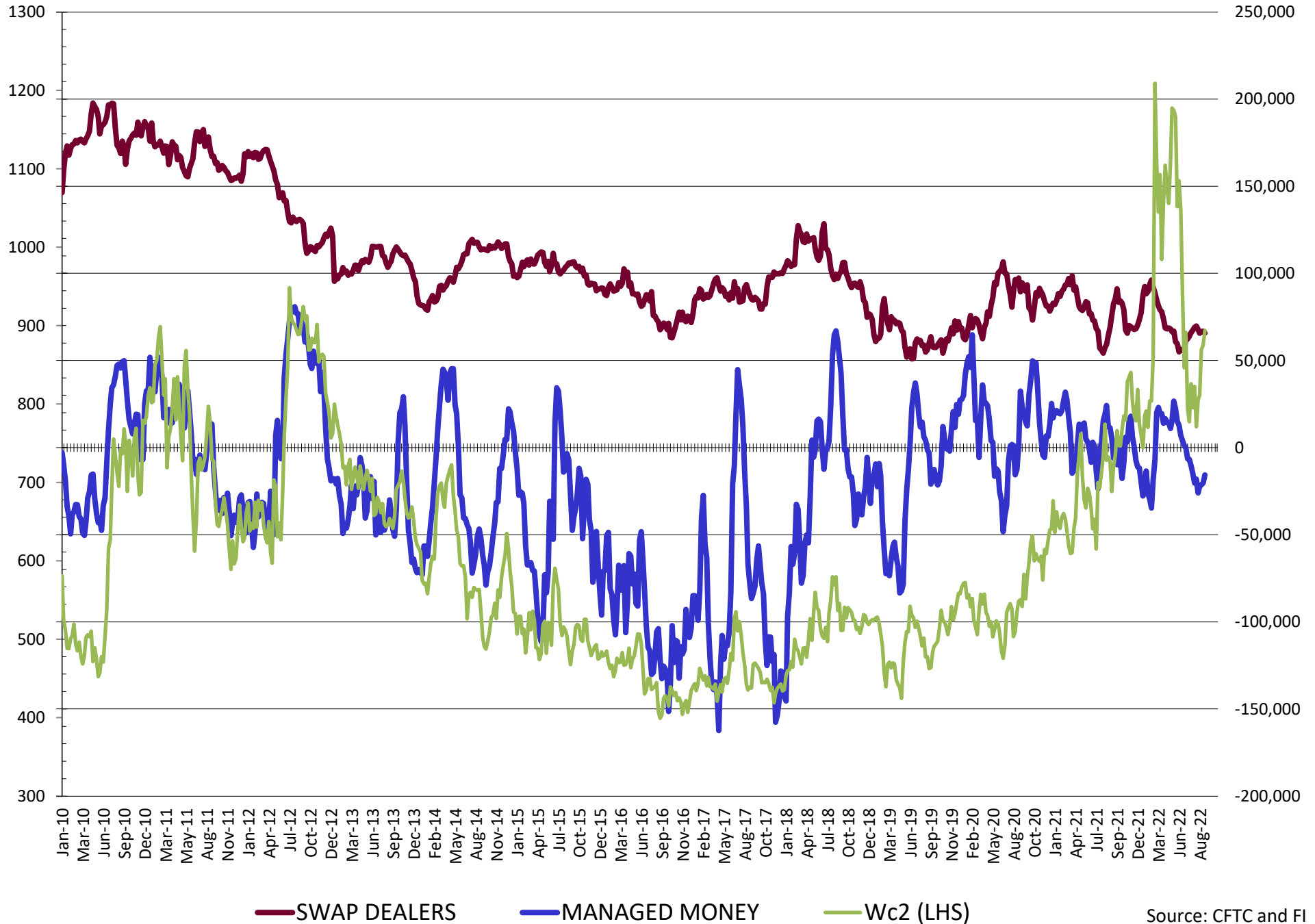
Source: CFTC and FI
9/24/2022

NET POSITION FUTURES AND OPTIONS OF SWAP AND MANAGED FUNDS IN CORN

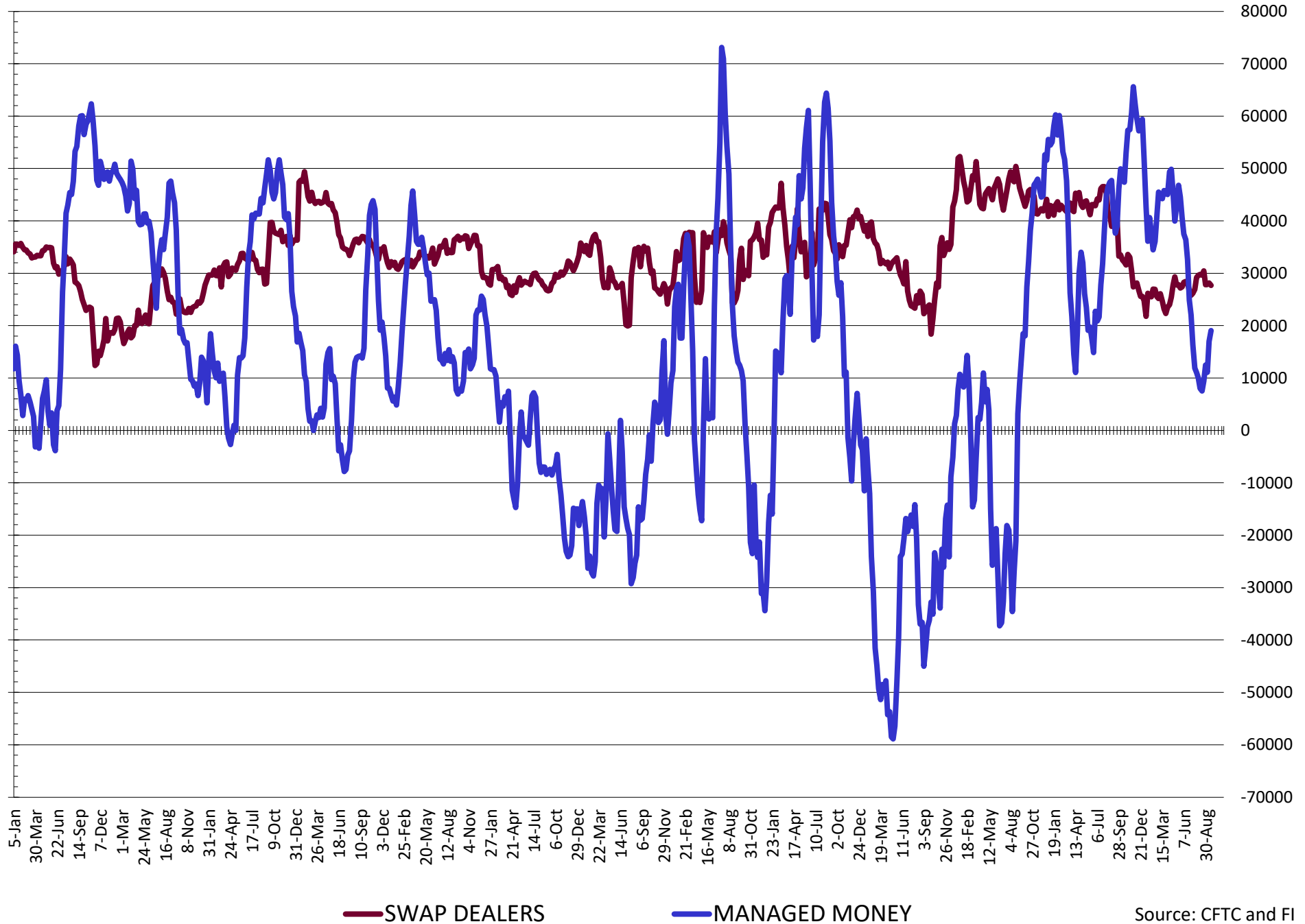


— SWAP DEALERS
 — MANAGED MONEY
 — Cc2 (LHS)

NET POSITION FUTURES AND OPTIONS OF SWAP AND MANAGED FUNDS IN CHICAGO WHEAT

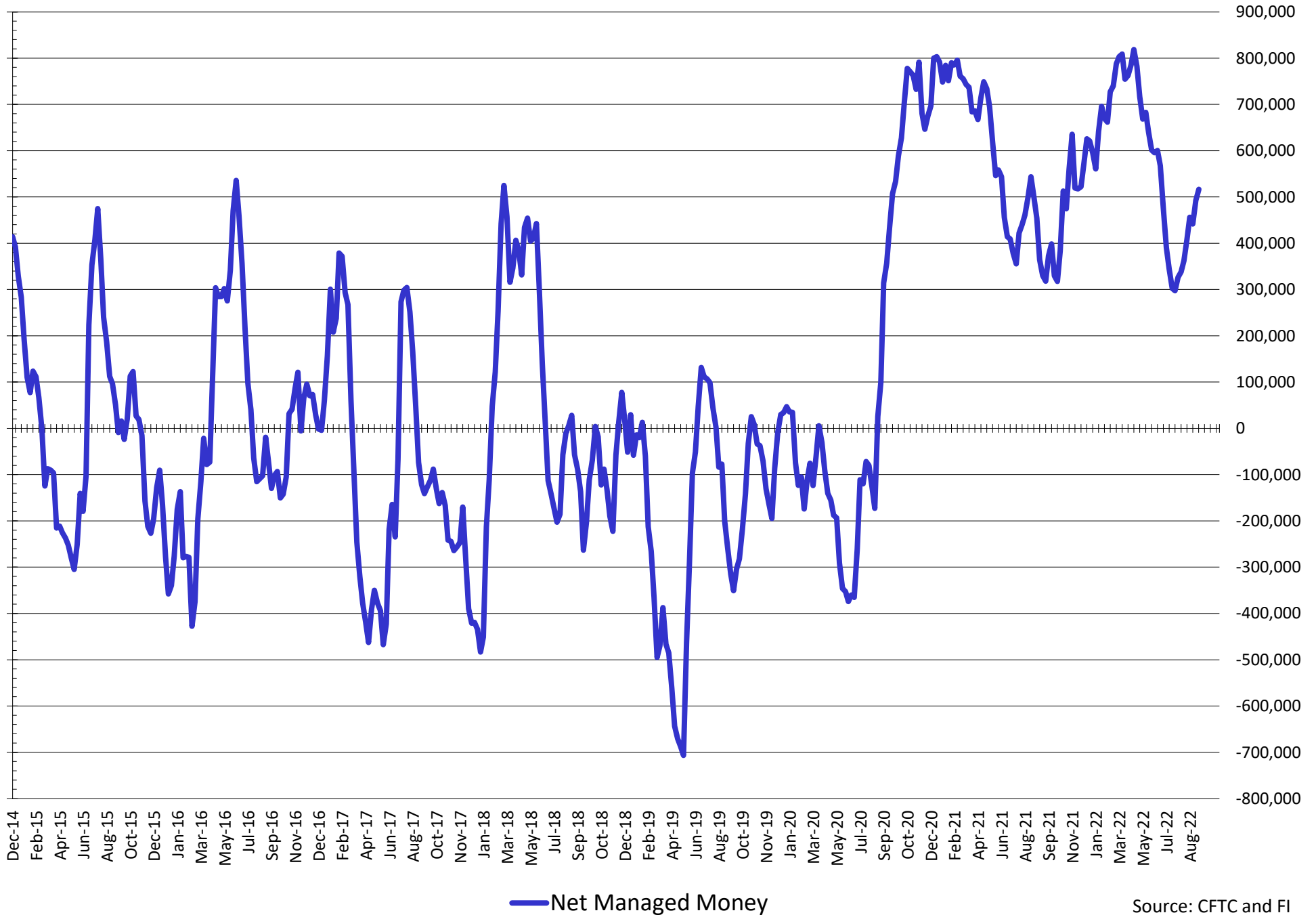


NET POSITION FUTURES AND OPTIONS OF SWAP AND MANAGED FUNDS IN KANSAS WHEAT



Source: CFTC and FI
9/24/2022

NET POSITION FUTURES AND OPTIONS OF SWAP AND MANAGED FUNDS IN COMBINED SRW, HRW, CORN, SOYBEANS, SOYMEAL AND SOYOIL



Source: CFTC and FI
9/24/2022

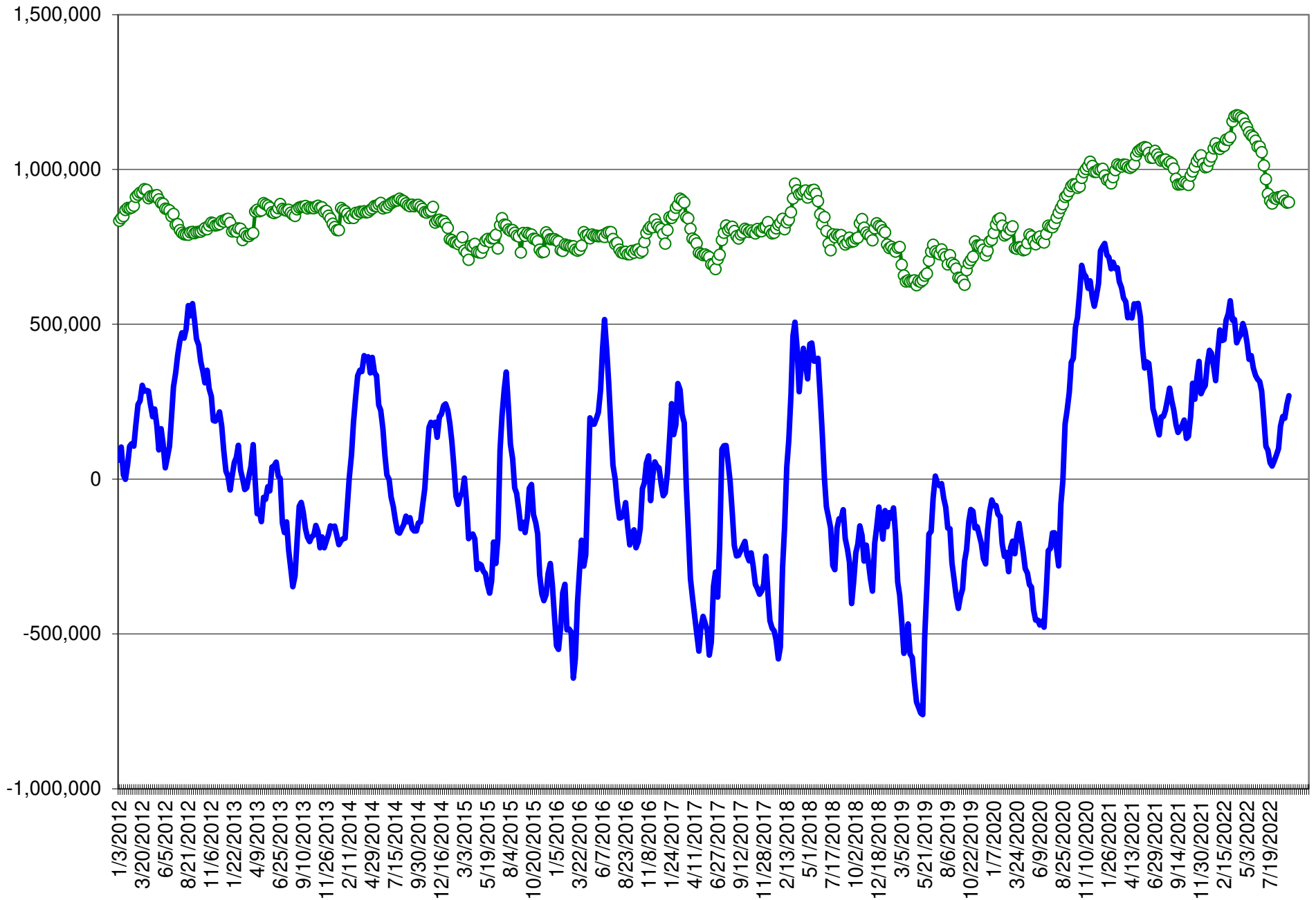
COMMITMENT OF TRADERS
FUTURES & OPTIONS NET POSITIONS (INDEX BROKEN OUT)
AS OF 09/20/2022
(IN THOUSAND CONTRACTS)

	COMMERCIAL				(FUND) NON COMMERCIAL				(SPEC) NON-REPORTABLE			
	20-Sep	13-Sep	6-Sep	30-Aug	20-Sep	13-Sep	6-Sep	30-Aug	20-Sep	13-Sep	6-Sep	30-Aug
	WHEAT											
Chicago	(63.4)	(60.6)	(61.4)	(60.0)	(47.5)	(53.6)	(52.0)	(56.0)	(5.1)	(3.8)	(2.6)	(2.2)
Kansas City	(50.3)	(48.2)	(41.8)	(41.8)	0.1	(3.0)	(9.2)	(9.2)	(1.2)	(0.4)	(0.1)	(1.0)
Minneapolis	-	-	-	-	-	-	-	-	-	-	-	-
All Wheat	(113.6)	(108.8)	(103.2)	(101.8)	(47.4)	(56.6)	(61.2)	(65.1)	(6.3)	(4.2)	(2.7)	(3.2)
CORN	(478.2)	(470.0)	(469.9)	(466.1)	173.3	159.5	153.0	147.1	(66.5)	(60.3)	(55.0)	(56.9)
OATS	-	-	-	-	-	-	-	-	-	-	-	-
SOYBEANS	(140.4)	(147.5)	(136.6)	(141.7)	41.7	51.0	33.4	33.5	(34.4)	(35.4)	(36.3)	(35.9)
SOY OIL	(135.7)	(134.0)	(122.5)	(131.0)	21.1	19.8	13.6	18.6	9.9	10.4	7.0	9.3
SOY MEAL	(225.4)	(210.0)	(197.7)	(212.6)	80.2	67.7	57.6	67.9	27.6	25.7	21.1	23.4

	TOTAL OPEN INTEREST				(INDEX) COMMERCIAL INDEX TRADERS				(INDEX) % NET OF TOTAL OPEN INTEREST			
	20-Sep	13-Sep	6-Sep	30-Aug	20-Sep	13-Sep	6-Sep	30-Aug	20-Sep	13-Sep	6-Sep	30-Aug
	WHEAT											
Chicago	387,820	373,189	363,699	362,465	115.9	118.0	116.0	118.1	29.9%	31.6%	31.9%	32.6%
Kansas City	172,256	165,458	160,602	159,411	51.4	51.5	51.1	51.9	29.8%	31.2%	31.8%	32.6%
Minneapolis	-	-	-	-	-	-	-	-	-	-	-	-
All Wheat	560,076	538,647	524,301	521,876	167.3	169.6	167.1	170.1	29.9%	31.5%	31.9%	32.6%
CORN	1,817,528	1,792,121	1,730,634	1,716,908	371.3	370.9	371.9	375.9	20.4%	20.7%	21.5%	21.9%
OATS	-	-	-	-	-	-	-	-	-	-	-	-
SOYBEANS	808,861	794,029	741,820	741,434	133.1	131.9	139.5	144.2	16.5%	16.6%	18.8%	19.4%
SOY OIL	454,576	449,801	439,474	439,383	104.6	103.8	101.9	103.1	23.0%	23.1%	23.2%	23.5%
SOY MEAL	445,424	428,745	431,875	435,028	117.6	116.6	119.0	121.4	26.4%	27.2%	27.5%	27.9%

SOURCE: CFTC & FI

NET POSITION FUTURES AND OPTIONS OF SPECULATORS AND INDEX FUNDS IN COMBINED SRW, HRW, CORN, SOYBEANS, SOYMEAL AND SOYOIL



Source: CFTC and FI

○ Net Index

— Net Speculator

9/24/2022

Traditional Daily Estimate of Funds 9/20/22

	(Neg)-"Short"	Pos-"Long"			
Actual less Est.	15.1	(0.3)	(17.9)	1.3	7.8
	Corn	Bean	Chi. Wheat	Meal	Oil
Actual	305.7	84.8	(4.0)	126.5	57.4
21-Sep	4.0	(6.0)	3.0	0.0	(2.0)
22-Sep	1.0	(3.0)	2.5	(6.0)	3.5
23-Sep	(11.0)	(12.0)	(10.0)	(4.0)	(7.0)
26-Sep					
27-Sep					
FI Est. of Futures Only 9/20/22	299.7	63.8	(8.5)	116.5	51.9
FI Est. Futures & Options	296.2	69.2	(10.8)	110.9	49.6
Futures only record long "Traditional Funds"	547.7 1/26/2021	280.9 11/10/2020	86.5 8/7/2018	167.5 5/1/2018	160.2 11/1/2016
Futures only record short	(235.0) 6/9/2020	(118.3) 4/30/2019	(130.0) 4/25/2017	(49.5) 3/1/2016	(69.8) 9/18/2018
Futures and options record net long	557.6 1/12/2021	270.9 10/6/2020	64.8 8/7/2012	132.1 5/1/2018	159.2 1/1/2016
Futures and options record net short	(270.6) 4/26/2019	(132.0) 4/30/2019	(143.3) 4/25/2017	(64.1) 3/1/2016	(77.8) 9/18/2018

Managed Money Daily Estimate of Funds 9/20/22

	Corn	Bean	Chi. Wheat	Meal	Oil
Latest CFTC Fut. Only	236.2	107.5	(18.1)	100.7	57.9
Latest CFTC F&O	247.9	104.7	(15.7)	102.2	58.3
FI Est. Managed Fut. Only	230	86	(23)	91	52
FI Est. Managed Money F&O	242	84	(20)	92	53

Index Funds Latest Positions (as of last Tuesday)

Index Futures & Options	371.3	133.1	115.9	NA	104.6
Change From Previous Week	0.5	1.2	(2.1)	NA	0.9

Source: Reuters, CFTC & FI (FI est. are noted with latest date)

Disclaimer

TO CLIENTS/PROSPECTS OF FUTURES INTERNATIONAL, SEE RISK DISCLOSURE BELOW:

THIS COMMUNICATION IS CONVEYED AS A SOLICITATION FOR ENTERING INTO A DERIVATIVES TRANSACTION.

Any trading recommendations and market or other information to Customer by Futures International (FI), although based upon information obtained from sources believed by FI to be reliable may not be accurate and may be changed without notice to customer. FI makes no guarantee as to the accuracy or completeness of any of the information or recommendations furnished to Customer. Customer understands that FI, its managers, employees and/or affiliates may have a position in commodity futures, options or other derivatives which may not be consistent with the recommendations furnished by FI to Customer.

The risk of trading futures and options and other derivatives involves a substantial risk of loss and is not suitable for all persons. In purchasing an option, the risk is limited to the premium paid, and all commissions and fees involved with the trade. When an option is shorted or written, the writer of the option has unlimited risk with respect to the option written. The use of options strategies such as a straddles and strangles involve multiple option positions and may substantially increase the amount of commissions and fees paid to execute the strategy. Option prices do not necessarily move in tandem with cash or futures prices. Each person must consider whether a particular trade, combination of trades or strategy is suitable for that person's financial means and objectives.

This material may include discussions of seasonal patterns, however, futures prices have already factored in the seasonal aspects of supply and demand, and seasonal patterns are no indication of future market trends. Finally, past performance is not indicative of future results.

This communication may contain links to third party websites which are not under the control of FI and FI is not responsible for their content. Products and services are offered only in jurisdictions where solicitation and sale are lawful, and in accordance with applicable laws and regulations in each such jurisdiction.