

	Current	Δ from YD	Δ from 7D Avg
Nat Gas Prompt	\$ 9.02	▼ \$ (0.24)	▼ \$ (0.22)

	Current	Δ from YD	Δ from 7D Avg
WTI Prompt	\$ 88.08	▲ \$ 1.47	▼ \$ (3.9)

	Current	Δ from YD	Δ from 7D Avg
Brent Prompt	\$ 93.79	▲ \$ 1.43	▼ \$ (5.7)

### Page Menu

[Short-term Weather Model Outlooks](#)

[Lower 48 Component Models](#)

[Regional S/D Models Storage Projection](#)

[Weather Model Storage Projection](#)

[Supply – Demand Trends](#)

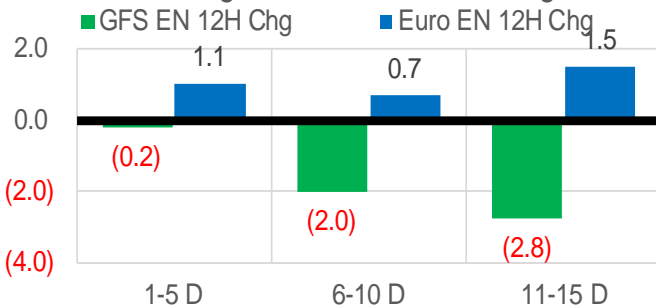
[Nat Gas Options Volume and Open Interest](#)

[Nat Gas Futures Open Interest](#)

[Price Summary](#)

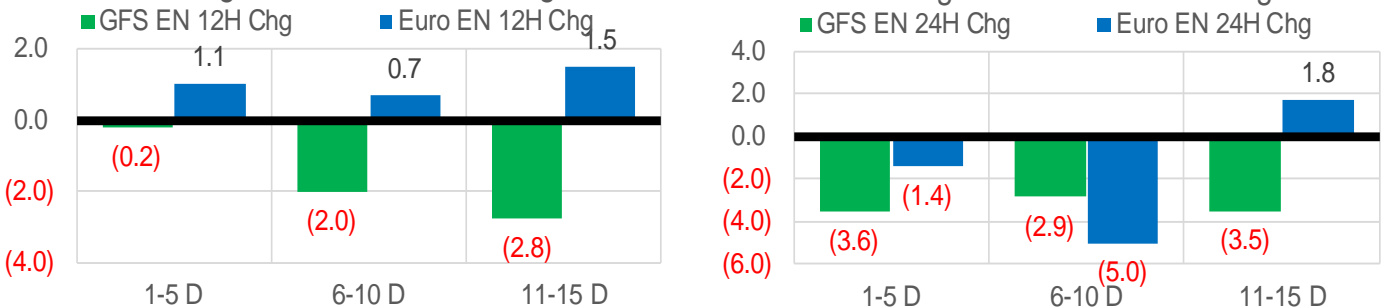
### Vs. 12H Ago

L48 Region - 00z TDD vs 12H Ago



### Vs. 24H Ago

L48 Region - 00z TDD vs 24H Ago



	Current	Δ from YD	Δ from 7D Avg
US Dry Production	99.8	▼ -0.15	▼ -0.06

	Current	Δ from YD	Δ from 7D Avg
US Power Burns	38.6	▼ -3.43	▼ -3.53

	Current	Δ from YD	Δ from 7D Avg
US ResComm	8.1	▼ -0.14	▼ -0.02

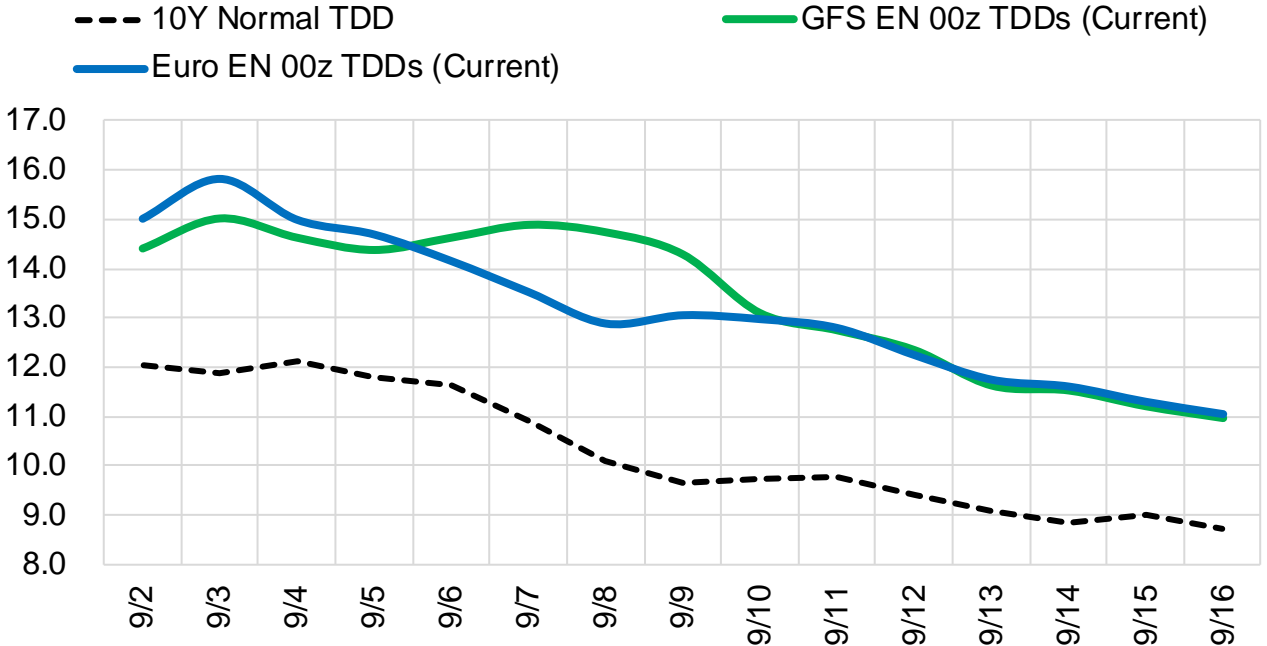
	Current	Δ from YD	Δ from 7D Avg
Canadian Imports	5.7	▼ -0.22	▼ -0.10

	Current	Δ from YD	Δ from 7D Avg
Net LNG Exports	11.4	▲ 0.17	▲ 0.40

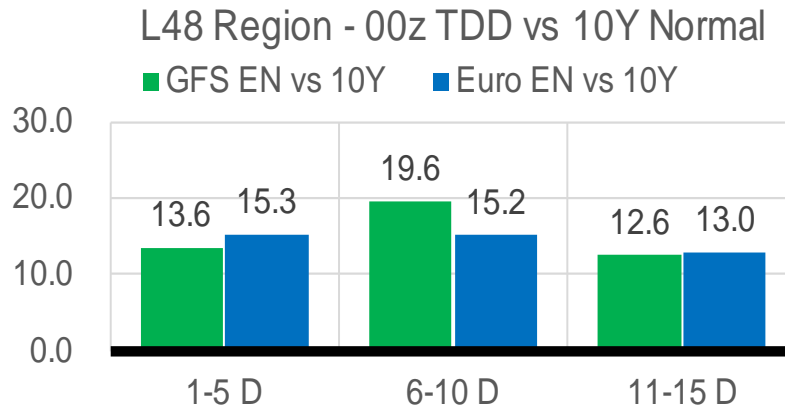
	Current	Δ from YD	Δ from 7D Avg
Mexican Exports	6.7	▼ -0.01	▼ -0.09

## Short-term Weather Model Outlooks (00z)

### L48 Region



## Vs. 10Y Normal



Source: WSI , Bloomberg

## Lower 48 Component Models

### Daily Balances

	27-Aug	28-Aug	29-Aug	30-Aug	31-Aug	1-Sep	2-Sep	DoD	vs. 7D
<b>Lower 48 Dry Production</b>	<b>100.5</b>	<b>100.3</b>	<b>100.2</b>	<b>99.0</b>	<b>99.6</b>	<b>100.0</b>	<b>99.8</b>	▼-0.2	▼-0.1
<b>Canadian Imports</b>	<b>5.5</b>	<b>5.5</b>	<b>5.9</b>	<b>6.1</b>	<b>5.8</b>	<b>5.9</b>	<b>5.7</b>	▼-0.2	▼-0.1
L48 Power	39.2	39.9	43.7	44.4	43.1	42.0	38.6	▼-3.4	▼-3.5
L48 Residential & Commercial	7.7	7.8	8.2	8.3	8.3	8.2	8.1	▼-0.1	▲0.0
L48 Industrial	21.4	21.4	21.8	22.1	22.6	22.7	23.2	▲0.5	▲1.2
L48 Lease and Plant Fuel	5.5	5.5	5.4	5.4	5.4	5.4	5.4	▼0.0	▼0.0
L48 Pipeline Distribution	2.5	2.5	2.8	2.8	2.7	2.8	2.6	▼-0.2	▼-0.1
<b>L48 Regional Gas Consumption</b>	<b>76.2</b>	<b>77.1</b>	<b>82.0</b>	<b>83.0</b>	<b>82.2</b>	<b>81.1</b>	<b>77.8</b>	▼-3.3	▼-2.4
<b>Net LNG Delivered</b>	<b>11.62</b>	<b>10.95</b>	<b>10.52</b>	<b>10.77</b>	<b>11.11</b>	<b>11.22</b>	<b>11.39</b>	▲0.2	▲0.4
<b>Total Mexican Exports</b>	<b>6.6</b>	<b>6.7</b>	<b>6.9</b>	<b>6.9</b>	<b>6.9</b>	<b>6.7</b>	<b>6.7</b>	▼0.0	▼-0.1
Implied Daily Storage Activity	11.5	11.1	6.6	4.5	5.2	6.8	9.5		
EIA Reported Daily Storage Activity									
Daily Model Error									

### EIA Storage Week Balances

	29-Jul	5-Aug	12-Aug	19-Aug	26-Aug	2-Sep	WoW	vs. 4W
<b>Lower 48 Dry Production</b>	<b>97.5</b>	<b>98.8</b>	<b>98.3</b>	<b>97.8</b>	<b>98.6</b>	<b>99.9</b>	▲1.2	▲1.5
<b>Canadian Imports</b>	<b>5.9</b>	<b>5.7</b>	<b>5.4</b>	<b>4.8</b>	<b>5.4</b>	<b>5.8</b>	▲0.3	▲0.5
L48 Power	44.6	44.1	45.5	39.6	41.2	42.1	▲0.9	▼-0.5
L48 Residential & Commercial	9.1	8.6	8.6	8.1	8.2	8.1	▼-0.1	▼-0.3
L48 Industrial	19.1	20.4	21.2	21.3	21.1	21.9	▲0.8	▲0.9
L48 Lease and Plant Fuel	5.3	5.4	5.3	5.3	5.4	5.4	▲0.1	▲0.1
L48 Pipeline Distribution	2.9	2.8	2.9	2.5	2.6	2.7	▲0.1	▼0.0
<b>L48 Regional Gas Consumption</b>	<b>81.0</b>	<b>81.3</b>	<b>83.5</b>	<b>76.8</b>	<b>78.5</b>	<b>80.2</b>	▲1.7	▲0.2
<b>Net LNG Exports</b>	<b>10.7</b>	<b>10.9</b>	<b>10.9</b>	<b>10.9</b>	<b>11.1</b>	<b>11.0</b>	▼-0.1	▲0.0
<b>Total Mexican Exports</b>	<b>6.9</b>	<b>6.9</b>	<b>7.0</b>	<b>7.0</b>	<b>6.9</b>	<b>6.8</b>	▼-0.1	▼-0.1
Implied Daily Storage Activity	4.8	5.4	2.3	7.9	7.6	7.7	0.1	
EIA Reported Daily Storage Activity	5.9	6.3	2.6	8.6	8.7			
Daily Model Error	-1.1	-0.9	-0.3	-0.6	-1.1			

### Monthly Balances

	2Yr Ago Sep-20	LY Sep-21	May-22	Jun-22	Jul-22	Aug-22	MTD Sep-22	MoM	vs. LY
<b>Lower 48 Dry Production</b>	<b>88.9</b>	<b>93.6</b>	<b>95.8</b>	<b>96.5</b>	<b>97.2</b>	<b>98.6</b>	<b>100.0</b>	▲1.3	▲6.4
<b>Canadian Imports</b>	<b>3.8</b>	<b>5.1</b>	<b>5.1</b>	<b>5.7</b>	<b>5.9</b>	<b>5.4</b>	<b>5.9</b>	▲0.5	▲0.8
L48 Power	34.4	33.1	29.8	38.0	43.7	42.5	42.0	▼-0.5	▲8.8
L48 Residential & Commercial	8.9	8.7	12.4	9.1	9.0	8.3	8.2	▼-0.1	▼-0.5
L48 Industrial	19.9	20.2	19.7	18.7	19.5	21.2	22.7	▲1.4	▲2.4
L48 Lease and Plant Fuel	4.8	5.1	5.3	5.3	5.3	5.4	5.4	▲0.1	▲0.3
L48 Pipeline Distribution	2.4	2.3	2.4	2.5	2.8	2.7	2.8	▲0.1	▲0.5
<b>L48 Regional Gas Consumption</b>	<b>70.4</b>	<b>69.5</b>	<b>69.5</b>	<b>73.7</b>	<b>80.2</b>	<b>80.1</b>	<b>81.1</b>	▲1.0	▲11.6
<b>Net LNG Exports</b>	<b>5.9</b>	<b>10.3</b>	<b>12.5</b>	<b>11.2</b>	<b>10.9</b>	<b>11.0</b>	<b>11.2</b>	▲0.3	▲0.9
<b>Total Mexican Exports</b>	<b>6.1</b>	<b>6.7</b>	<b>7.0</b>	<b>7.1</b>	<b>7.0</b>	<b>6.9</b>	<b>6.7</b>	▼-0.2	▲0.0
Implied Daily Storage Activity	10.3	12.1	11.9	10.2	5.0	6.0	6.8		
EIA Reported Daily Storage Activity									
Daily Model Error					0.2				

Source: Bloomberg, analytix.ai

## Daily Average Generation Data

### Nuclear Generation Daily Average - GWh (NRC)

	25-Aug	26-Aug	27-Aug	28-Aug	29-Aug	30-Aug	31-Aug	DoD	vs. 7D
NRC Nuclear Daily Output	90.9	91.0	90.4	90.4	88.1	89.3	89.4	0.1	-0.6
NRC Nuclear Max Capacity	104.9	104.9	104.9	104.9	104.9	104.9	104.9	0.0	0.0
NRC Nuclear Outage	14.0	13.9	14.5	14.5	16.8	15.5	15.4	-0.1	0.6
NRC % Nuclear Cap Utilization	92.4	92.5	91.9	91.9	89.6	90.8	90.9	0.1	-0.6

### Wind Generation Daily Average - MWh (EIA)

	25-Aug	26-Aug	27-Aug	28-Aug	29-Aug	30-Aug	31-Aug	DoD	vs. 7D
CALI Wind	1912	2283	2667	2008	1290	1383	1598	215	-325
TEXAS Wind	2240	3799	9831	13304	10087	4912	2588	-2324	-4774
US Wind	16857	28825	50732	55483	42928	25996	23800	-2196	-13003

### Generation Daily Average - MWh (EIA)

	25-Aug	26-Aug	27-Aug	28-Aug	29-Aug	30-Aug	31-Aug	DoD	vs. 7D
US Wind	16857	28825	50732	55483	42928	25996	23800	-2196	-13003
US Solar	15307	16799	17889	16955	16785	16082	16434	352	-202
US Petroleum	1096	1025	1019	1023	1393	1198	1110	-88	-16
US Other	10461	10483	10409	10320	10843	10717	10144	-573	-394
US Coal	119850	114606	104565	105634	116275	119150	115451	-3699	2104
US Nuke	93476	93293	92962	92031	91214	91492	91770	278	-642
US Hydro	32278	30710	25715	25431	28820	27969	28020	51	-467
<b>US Gas</b>	<b>242459</b>	<b>237256</b>	<b>206192</b>	<b>203260</b>	<b>240792</b>	<b>247467</b>	<b>245061</b>	<b>-2406</b>	<b>15490</b>

See National Wind and Nuclear daily charts

Source: Bloomberg, analytix.ai

## Storage Week Average Generation Data

### Nuclear Generation Weekly Average - GWh (NRC)

	29-Jul	5-Aug	12-Aug	19-Aug	26-Aug	2-Sep	WoW	WoW Bcf/d Impact
NRC Nuclear Daily Output	90.1	90.6	90.7	91.2	90.3	89.7	-0.6	0.1
NRC Nuclear Max Capacity	104.9	104.9	104.9	104.9	104.9	104.9	0.0	
NRC Nuclear Outage	14.8	14.3	14.1	13.7	14.5	15.2	0.6	
NRC % Nuclear Cap Utilization	91.6	92.1	92.3	92.8	91.9	91.2	-0.7	

### Wind Generation Weekly Average - MWh (EIA)

	29-Jul	5-Aug	12-Aug	19-Aug	26-Aug	2-Sep	WoW	WoW Bcf/d Impact
CALI Wind	3049	1933	1901	1953	2324	1833	-491	0.1
TEXAS Wind	14533	14443	8762	7139	5879	6730	851	-0.2
US Wind	44003	43887	32976	28474	23567	35938	12371	-2.2
							52%	

### Generation Weekly Average - MWh (EIA)

	29-Jul	5-Aug	12-Aug	19-Aug	26-Aug	2-Sep	WoW	WoW Bcf/d Impact
						est.		
US Wind	44003	43887	32976	28474	23567	35938	12371	-2.2
US Solar	18098	17577	17568	16951	15836	16768	932	-0.2
US Petroleum	1465	1131	1737	1045	1047	1125	78	0.0
US Other	10690	10470	10725	9882	10304	10437	133	0.0
US Coal	128742	122297	122575	112824	114385	113019	-1366	0.2
US Nuke	92281	92607	92966	94032	92872	92076	-796	0.1
US Hydro	32210	31339	30400	30431	30471	27812	-2659	0.5
<b>US Gas</b>	<b>238167</b>	<b>236187</b>	<b>252451</b>	<b>218061</b>	<b>226703</b>	<b>232155</b>	<b>5453</b>	<b>1.0</b>

See National Wind and Nuclear daily charts

Source: Bloomberg, analytix.ai

## Monthly Average Generation Data

### Nuclear Generation Monthly Average - GWh (NRC)

	2Yr Ago	LY	MTD						
	Same 30 days	Same 30 days	Jun-22	Jul-22	Aug-22	Sep-22	Last 30 days	MoM (MTD vs LY)	Last 30 days YoY
	NRC Nuclear Daily Output	90.8	91.5	88.6	90.6	90.6	89.2	90.4	-1.3
NRC Nuclear Max Capacity	104.9	104.9	104.9	104.9	104.9	104.9	104.9	0.0	0.0
NRC Nuclear Outage	14.1	13.4	16.3	14.3	14.3	15.7	14.4	1.3	1.0
NRC % Nuclear Cap Utilization	92.3	93.0	90.1	92.1	92.1	90.7	92.0	-1.4	-1.0

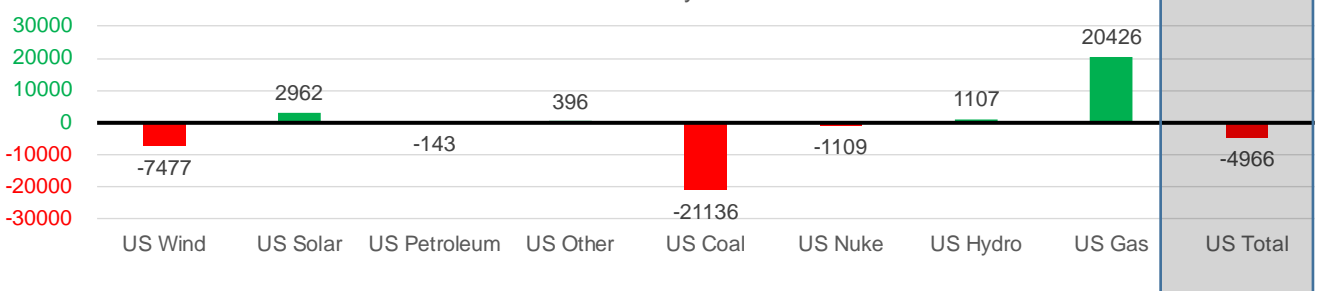
### Wind Generation Monthly Average - MWh (EIA)

	2Yr Ago	LY	MTD						
	Same 30 days	Same 30 days	Jun-22	Jul-22	Aug-22	Sep-22	Last 30 days	MoM (MTD vs LY)	Last 30 days YoY
	CALI Wind	2072	2530	2892	2719	2028	1598	1995	-430
TEXAS Wind	9149	10453	13378	11765	8440	2588	7195	-5852	-3258
US Wind	31585	37971	46918	39701	33218	23800	30493	-9417	-7477

### Generation Monthly Average - MWh (EIA)

	2Yr Ago	LY	MTD						
	Same 30 days	Same 30 days	Jun-22	Jul-22	Aug-22	Sep-22	Last 30 days	MoM (MTD vs LY)	Last 30 days YoY
	US Wind	31585	37971	46918	39701	33218	23800	30493	▲ 6693.3
US Solar	10535	13777	19381	18593	16891	16434	16739	▲ 304.7	▲ 2962
US Petroleum	1142	1388	1001	1252	1253	1110	1245	▲ 135	▼ -143
US Other	9688	9955	8575	9961	10378	10144	10351	▲ 207	▲ 396
US Coal	124230	137283	105517	119788	117129	115451	116147	▲ 696	▼ -21136
US Nuke	93011	94023	89978	92883	92969	91770	92913	▲ 1144	▼ -1109
US Hydro	29408	28670	37531	34185	30076	28020	29777	▲ 1757	▲ 1107
<b>US Gas</b>	<b>217885</b>	<b>213123</b>	<b>200787</b>	<b>235788</b>	<b>233328</b>	<b>245061</b>	<b>233549</b>	▲ 10937	▲ 20426
<b>US Total</b>	<b>515263</b>	<b>535996</b>	<b>509261</b>	<b>551806</b>	<b>535094</b>	<b>531362</b>	<b>531030</b>	▲ 15181	▼ -4966

Last 30 days YoY



See National Wind and Nuclear daily charts

Source: Bloomberg, analytix.ai

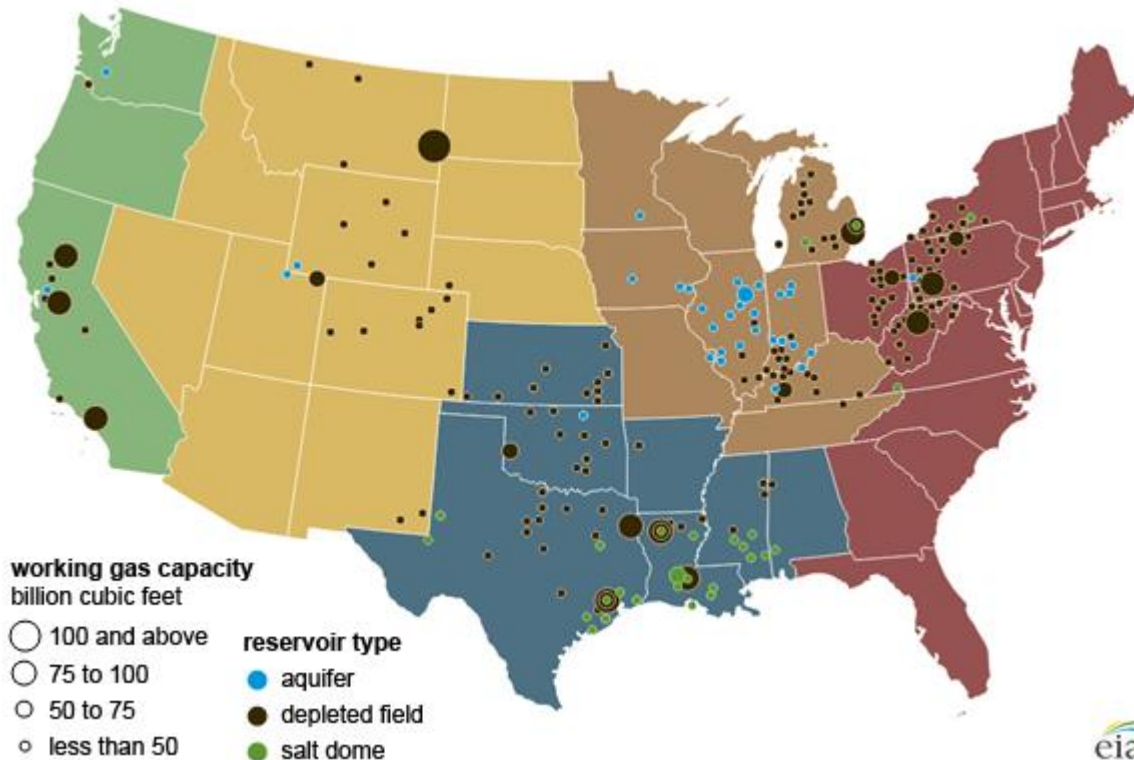
### Regional S/D Models Storage Projection

Week Ending 2-Sep

	Daily Raw Storage	Daily Adjustment Factor	Daily Average Storage Activity (Adjusted) *	Weekly Adjusted Storage Activity
L48	8.6	0.1	8.8	61
East	1.0	1.7	2.7	19
Midwest	4.3	-0.2	4.1	29
Mountain	4.5	-4.0	0.4	3
South Central	-1.5	3.4	1.9	13
Pacific	0.4	-0.7	-0.3	-2

\*Adjustment Factor is calculated based on historical regional deltas

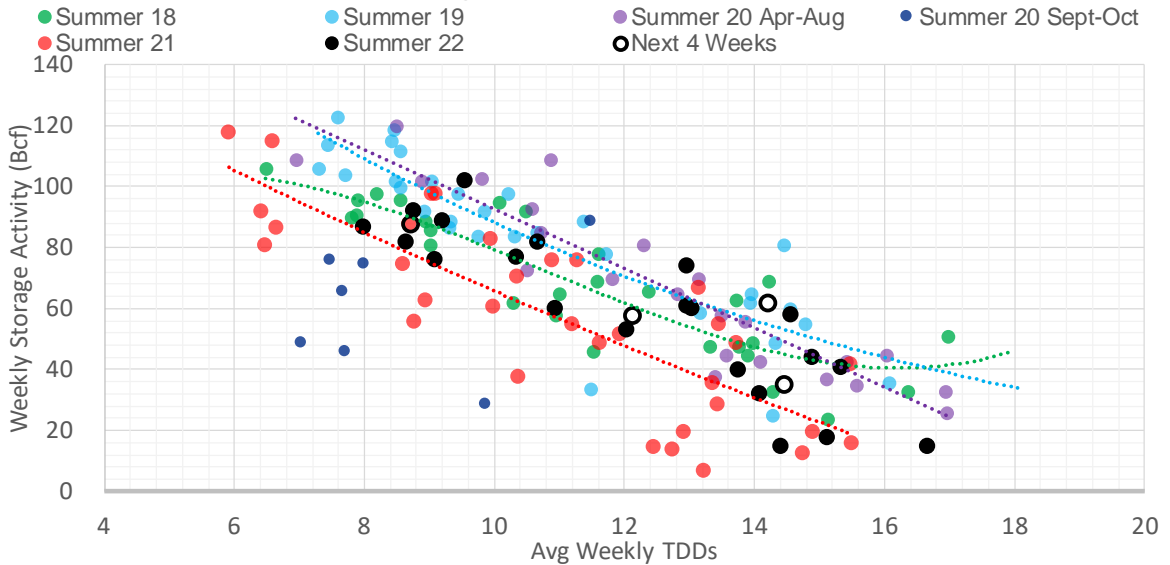
U.S. underground natural gas storage facilities by type (July 2015)



## Weather Model Storage Projection

Next report and beyond		
Week Ending	GWDDs	Week Storage Projection
02-Sep	14.2	61
09-Sep	14.5	35
16-Sep	12.1	57
23-Sep	8.7	88

### Weather Storage Model - Next 4 Week Forecast

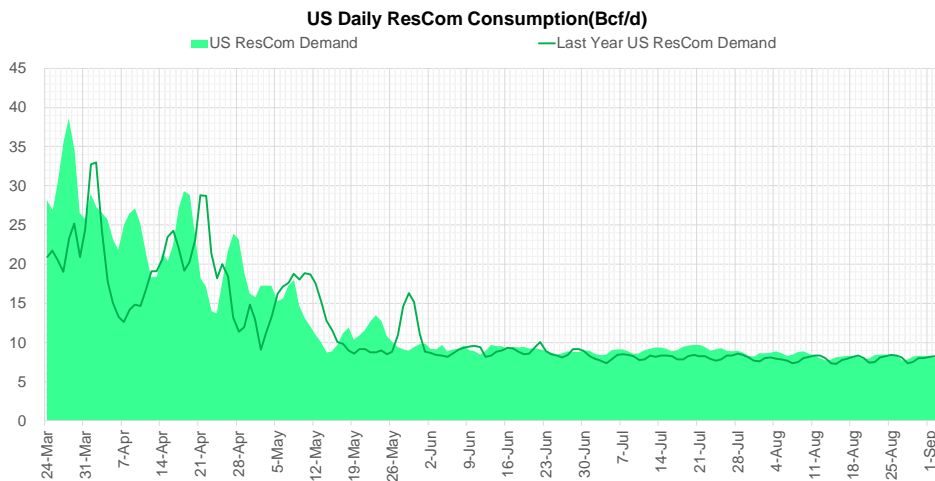
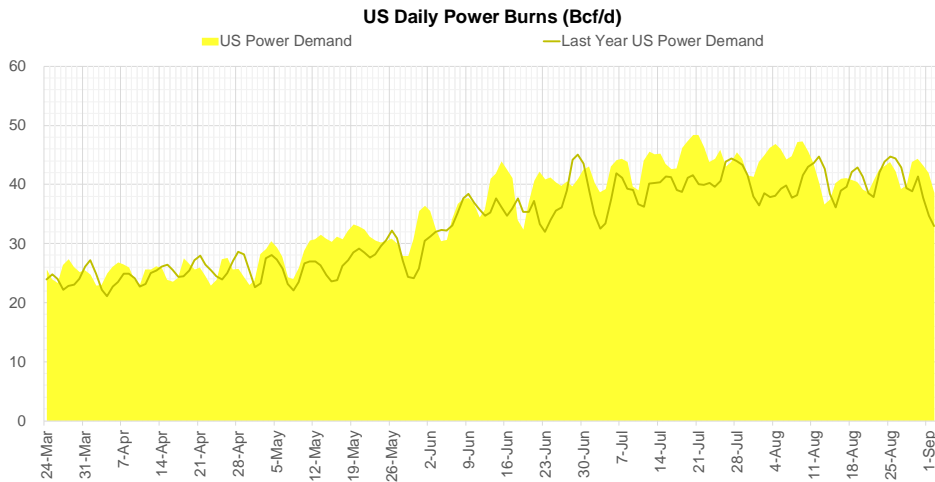
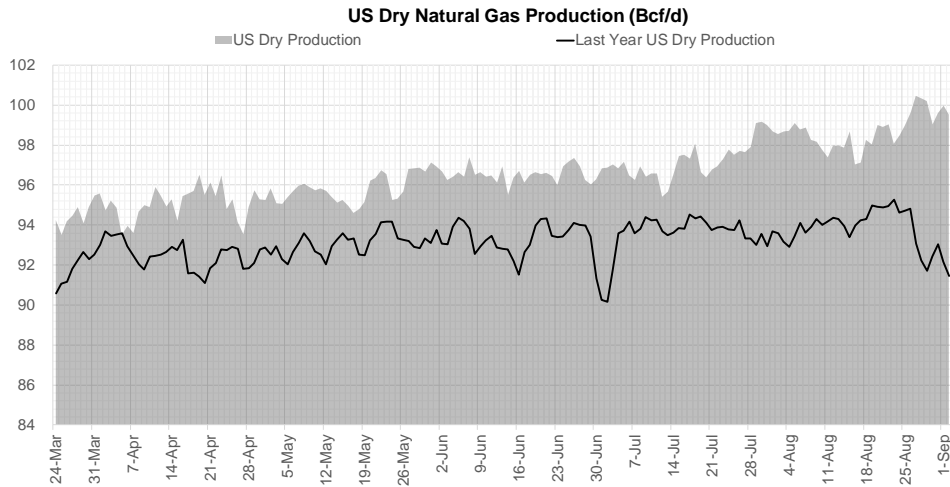


Go to larger image





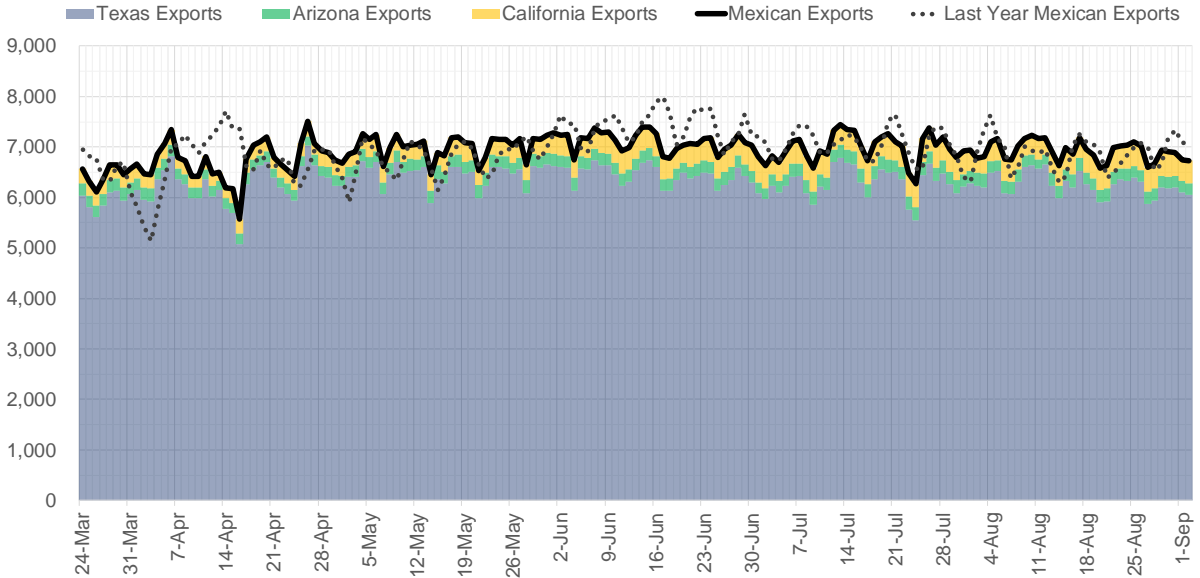
## Supply – Demand Trends



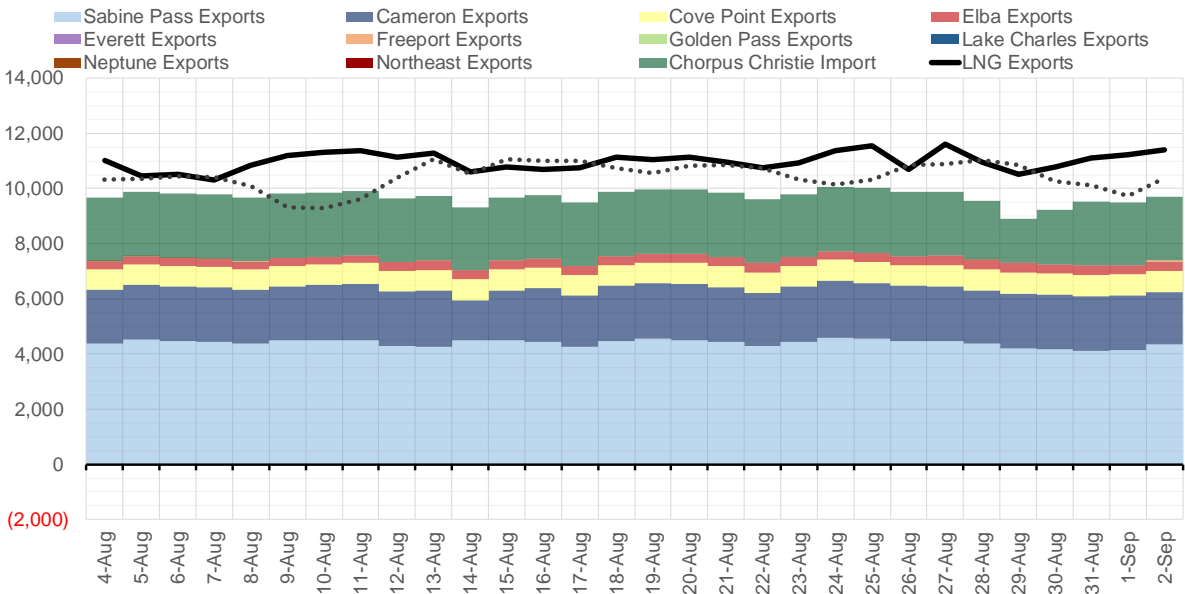
Source: Bloomberg

The risk of trading futures and options and other derivatives involves a substantial risk of loss and is not suitable for all persons. Each person must consider whether a particular trade, combination of trades, or strategy is suitable for that person's financial means and objectives. Past results are not necessarily indicative of future results. This communication may contain links to third party websites which are not under the control of and are not maintained by ION Energy Group, and ION Energy Group is not responsible for their content.

### Mexican Exports (MMcf/d)



### Net LNG Exports - Last 30 days (MMcf/d)



Source: Bloomberg

The risk of trading futures and options and other derivatives involves a substantial risk of loss and is not suitable for all persons. Each person must consider whether a particular trade, combination of trades, or strategy is suitable for that person's financial means and objectives. Past results are not necessarily indicative of future results. This communication may contain links to third party websites which are not under the control of and are not maintained by ION Energy Group, and ION Energy Group is not responsible for their content.

### Nat Gas Options Volume and Open Interest CME and ICE Combined

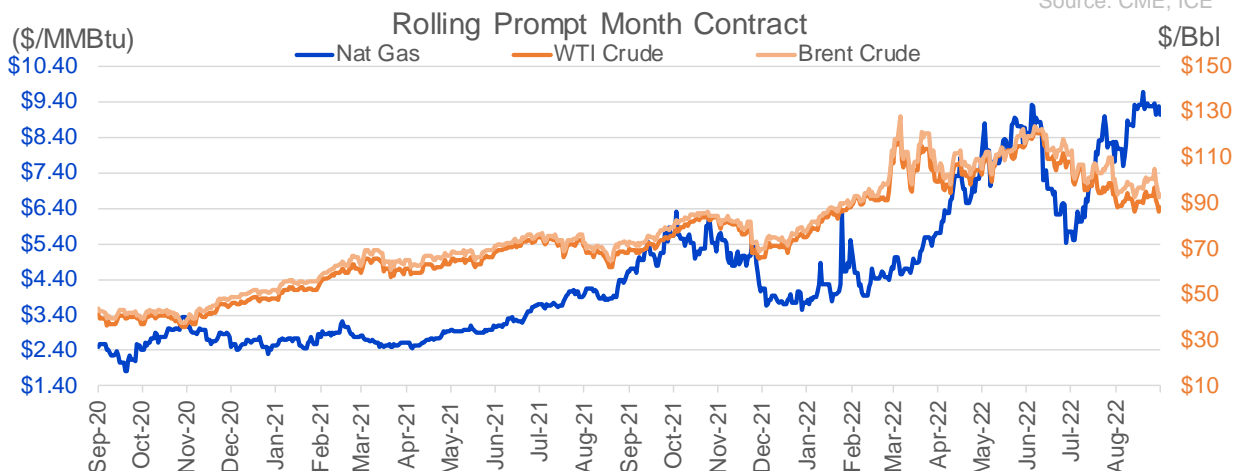
CONTRACT MONTH	CONTRACT YEAR	PUT/CALL	STRIKE	CUMULATIVE VOL	CONTRACT MONTH	CONTRACT YEAR	PUT/CALL	STRIKE	CUMULATIVE OI
12	2022	P	4.00	5758	10	2022	P	3.00	36676
10	2022	P	6.00	4762	10	2022	C	6.00	36012
12	2022	P	6.00	4385	10	2022	P	6.00	33211
12	2022	P	5.00	4086	10	2022	P	5.00	30745
10	2022	C	10.00	3648	10	2022	P	2.50	28111
10	2022	P	7.00	3565	12	2022	P	5.00	23434
11	2022	P	5.00	3559	10	2022	C	5.00	23273
10	2022	C	12.00	3140	10	2022	P	3.50	22294
5	2023	P	2.00	2248	5	2023	P	2.00	22127
10	2022	P	5.50	2226	11	2022	P	4.00	21650
10	2022	P	8.00	2057	3	2023	C	10.00	21504
10	2022	P	9.00	1985	10	2022	C	10.00	21353
11	2022	P	5.25	1700	10	2022	P	4.00	21271
12	2022	P	5.25	1700	10	2022	C	12.00	21068
10	2022	C	10.50	1681	11	2022	P	6.00	18817
10	2022	P	5.00	1653	11	2022	P	5.00	18325
4	2023	P	5.00	1615	12	2022	C	5.00	18218
2	2023	P	5.25	1600	3	2023	P	3.00	18152
1	2023	P	6.00	1572	3	2023	C	20.00	17881
10	2022	C	9.00	1524	10	2023	P	2.50	17300
12	2022	P	5.50	1471	10	2022	P	5.50	17116
10	2022	P	7.50	1428	10	2022	C	8.00	16902
11	2022	C	12.00	1420	10	2022	P	2.00	16759
12	2022	P	7.00	1376	4	2023	P	3.00	16644
3	2023	C	1.00	1308	10	2023	P	3.00	16448
3	2023	P	1.00	1308	10	2022	P	8.00	16427
4	2023	P	2.75	1200	12	2022	C	4.00	16194
5	2023	P	2.75	1200	2	2023	C	10.00	16070
6	2023	P	2.75	1200	10	2022	P	7.00	15935
7	2023	P	2.75	1200	11	2022	C	4.00	15755
8	2023	P	2.75	1200	10	2023	P	2.00	15510
9	2023	P	2.75	1200	10	2022	P	3.25	15196
10	2023	P	2.75	1200	1	2023	C	10.00	15184
4	2023	P	2.00	1190	10	2022	C	7.00	15121
6	2023	P	2.00	1190	1	2023	P	5.00	14968
4	2024	C	10.00	1000	2	2023	C	9.00	14723
5	2024	C	10.00	1000	11	2022	C	12.00	14633
6	2024	C	10.00	1000	10	2022	C	11.00	14595
7	2024	C	10.00	1000	11	2022	C	10.00	14229
8	2024	C	10.00	1000	12	2022	C	6.00	13981
9	2024	C	10.00	1000	10	2022	C	9.00	13883
10	2024	C	10.00	1000	6	2023	P	3.00	13695
1	2023	C	9.25	950	5	2023	P	3.00	13598
1	2023	C	9.65	950	11	2022	C	8.00	13564
4	2023	C	8.00	950	4	2023	P	2.00	13538
4	2024	P	2.75	950	12	2022	P	4.00	13316
4	2024	P	2.75	950	10	2022	C	4.00	13309
5	2024	P	2.75	950	10	2022	P	2.75	13286
6	2024	P	2.75	950	10	2022	C	3.00	13214
7	2024	P	2.75	950	7	2023	P	3	13075

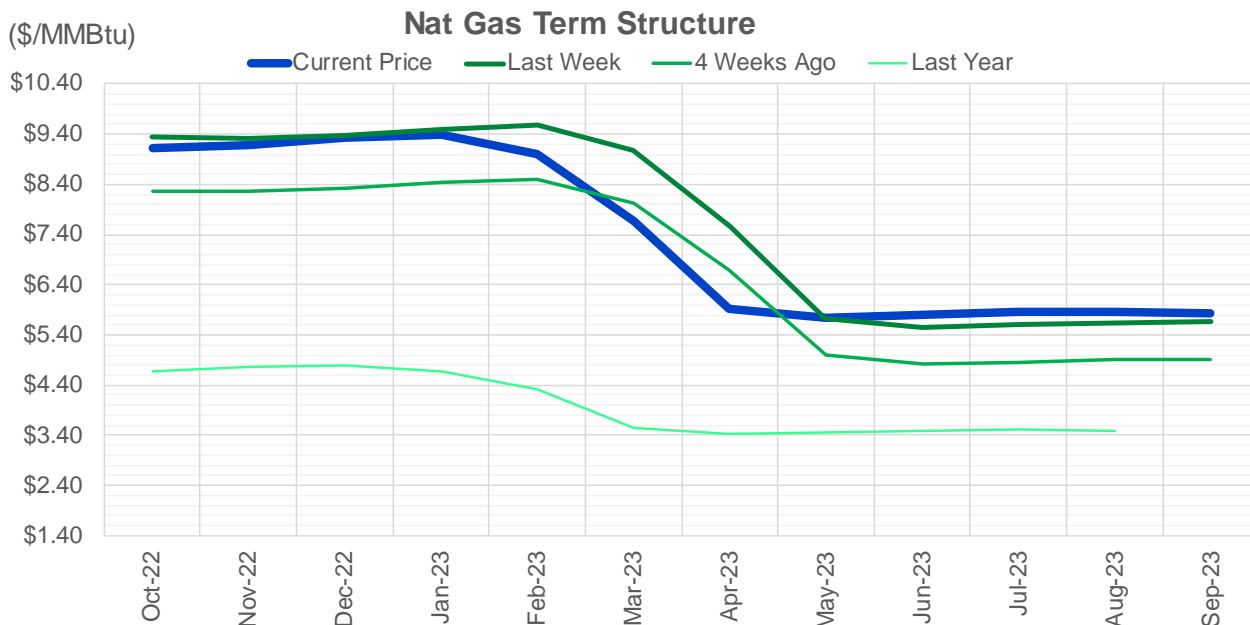
Source: CME, ICE

### Nat Gas Futures Open Interest CME and ICE Combined

CME Henry Hub Futures (10,000 MMBtu)				ICE Henry Hub Futures Contract Equivalent (10,000 MM			
	Current	Prior	Daily Change		Current	Prior	Daily Change
OCT 22	117692	119532	-1840	OCT 22	77247	77594	-347
NOV 22	128025	128562	-537	NOV 22	71067	70239	828
DEC 22	69671	69677	-6	DEC 22	67311	67040	271
JAN 23	87122	87624	-502	JAN 23	68401	67945	456
FEB 23	39804	39120	684	FEB 23	64213	63965	248
MAR 23	62112	59832	2280	MAR 23	55098	54978	121
APR 23	71532	70671	861	APR 23	55369	55487	-118
MAY 23	77738	77049	689	MAY 23	53762	53591	171
JUN 23	23938	24387	-449	JUN 23	45423	45538	-116
JUL 23	24898	24914	-16	JUL 23	44807	44829	-22
AUG 23	19624	19459	165	AUG 23	43738	43531	206
SEP 23	22393	22136	257	SEP 23	43038	42844	195
OCT 23	53301	53922	-621	OCT 23	50418	50448	-30
NOV 23	15275	14318	957	NOV 23	46484	45953	531
DEC 23	12769	12584	185	DEC 23	41272	41263	10
JAN 24	19903	19994	-91	JAN 24	40311	40216	95
FEB 24	8421	8378	43	FEB 24	31070	31070	0
MAR 24	18456	18292	164	MAR 24	36088	36069	19
APR 24	14942	14917	25	APR 24	28536	28361	175
MAY 24	7335	7347	-12	MAY 24	27500	27368	131
JUN 24	2888	2899	-11	JUN 24	24900	24756	144
JUL 24	3341	2570	771	JUL 24	24638	24506	133
AUG 24	3455	3446	9	AUG 24	24377	24245	133
SEP 24	2057	2074	-17	SEP 24	24170	24042	129
OCT 24	8581	9136	-555	OCT 24	27846	27553	293
NOV 24	4917	4943	-26	NOV 24	25133	25124	9
DEC 24	8113	8136	-23	DEC 24	28513	28504	9
JAN 25	16800	16755	45	JAN 25	22324	22483	-159
FEB 25	1116	1115	1	FEB 25	14720	14670	50
MAR 25	5122	5141	-19	MAR 25	17013	16923	90

Source: CME, ICE





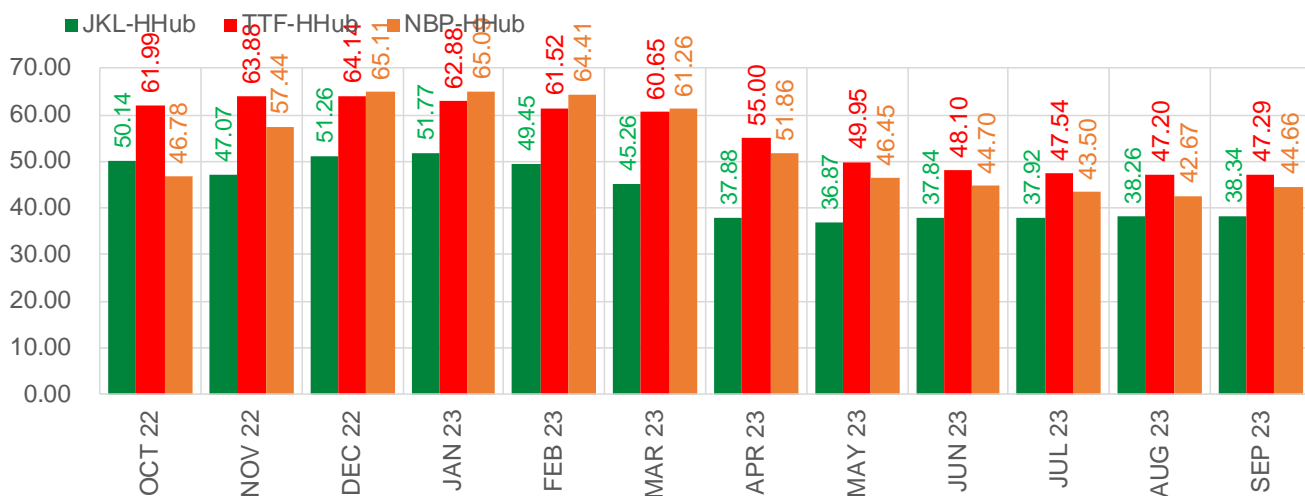
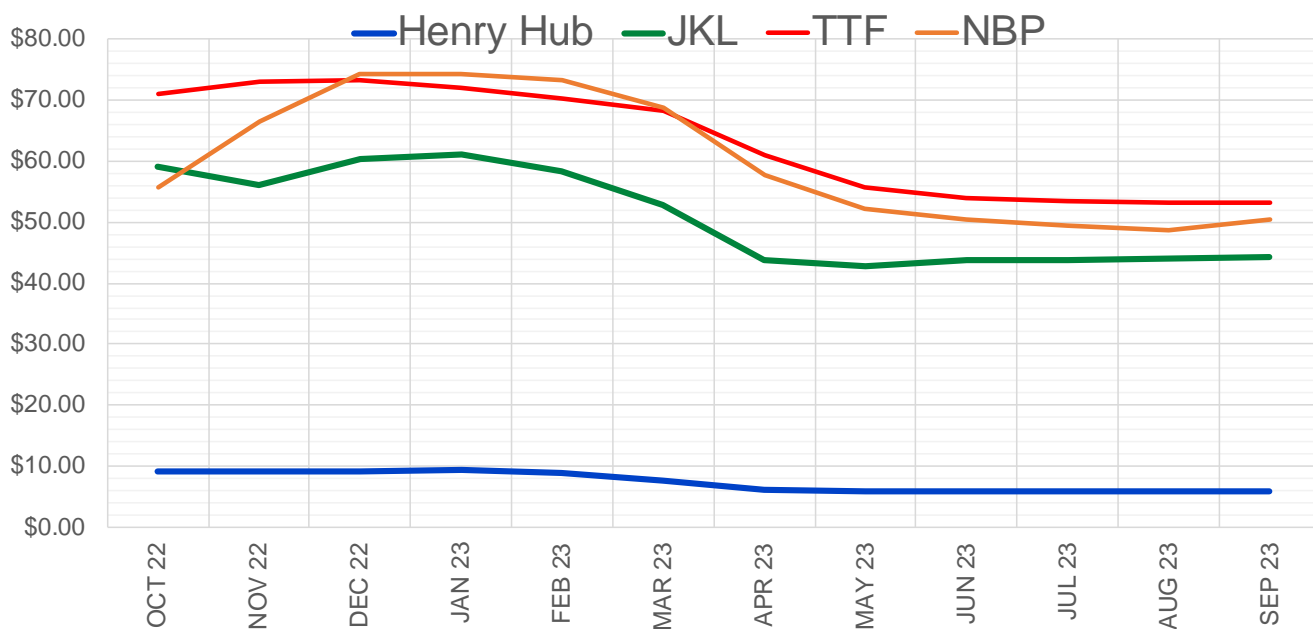
	Oct-22	Nov-22	Dec-22	Jan-23	Feb-23	Mar-23	Apr-23	May-23	Jun-23	Jul-23	Aug-23	Sep-23
<b>Current Price</b>	<b>\$9.127</b>	<b>\$9.189</b>	<b>\$9.326</b>	<b>\$9.396</b>	<b>\$9.013</b>	<b>\$7.660</b>	<b>\$5.925</b>	<b>\$5.753</b>	<b>\$5.798</b>	<b>\$5.846</b>	<b>\$5.858</b>	<b>\$5.842</b>
Last Week	\$9.330	\$9.300	\$9.369	\$9.504	\$9.570	\$9.079	\$7.578	\$5.740	\$5.551	\$5.596	\$5.642	\$5.653
vs. Last Week	-\$0.203	-\$0.111	-\$0.043	-\$0.108	-\$0.557	-\$1.419	-\$1.653	\$0.013	\$0.247	\$0.250	\$0.216	\$0.189
4 Weeks Ago	\$8.266	\$8.262	\$8.331	\$8.429	\$8.490	\$8.035	\$6.692	\$5.002	\$4.812	\$4.853	\$4.897	\$4.911
vs. 4 Weeks Ago	\$0.861	\$0.927	\$0.995	\$0.967	\$0.523	-\$0.375	-\$0.767	\$0.751	\$0.986	\$0.993	\$0.961	\$0.931
Last Year	\$4.615	\$4.663	\$4.749	\$4.798	\$4.683	\$4.321	\$3.553	\$3.442	\$3.467	\$3.499	\$3.506	\$3.492
vs. Last Year	\$4.512	\$4.526	\$4.577	\$4.598	\$4.330	\$3.339	\$2.372	\$2.311	\$2.331	\$2.347	\$2.352	\$2.350

	Units	Cash Settled	Prompt Settle	Cash to Prompt
AGT Citygate	\$/MMBtu	8.50	8.61	0.11
TETCO M3	\$/MMBtu	8.28	8.06	-0.22
FGT Zone 3	\$/MMBtu	8.44	10.23	1.79
Zone 6 NY	\$/MMBtu	8.44	8.04	-0.40
Chicago Citygate	\$/MMBtu	8.77	8.82	0.05
Michcon	\$/MMBtu	8.75	8.71	-0.04
Columbia TCO Pool	\$/MMBtu	8.26	8.06	-0.20
Ventura	\$/MMBtu	5.95	8.69	2.74
Rockies/Opal	\$/MMBtu	9.32	8.55	-0.77
El Paso Permian Basin	\$/MMBtu	8.21	7.95	-0.26
Socal Citygate	\$/MMBtu	15.75	10.19	-5.56
Malin	\$/MMBtu	9.11	8.83	-0.28
Houston Ship Channel	\$/MMBtu	8.79	8.75	-0.04
Henry Hub Cash	\$/MMBtu	8.94	8.49	-0.45
AECO Cash	C\$/GJ	2.66	3.98	1.32
Station2 Cash	C\$/GJ	0.21	8.40	8.19
Dawn Cash	C\$/GJ	8.72	8.75	0.03

Source: CME, Bloomberg

	Units	Current Price	vs. Last Week	vs. 4 Weeks Ago	vs. Last Year
NatGas Jul21/Oct21	\$/MMBtu	2.224	▲ 0.000	▲ 0.000	▲ 1.200
NatGas Oct21/Nov21	\$/MMBtu	0.361	▲ 0.000	▲ 0.000	▲ 0.310
NatGas Oct21/Jan22	\$/MMBtu	-1.817	▲ 0.000	▲ 0.000	▼ -2.008
NatGas Apr22/Oct22	\$/MMBtu	3.926	▼ -0.082	▲ 1.148	▲ 3.956
WTI Crude	\$/Bbl	86.61	▼ -5.910	▼ -1.930	▲ 16.620
Brent Crude	\$/Bbl	92.36	▼ -6.980	▼ -1.760	▲ 19.330
Fuel Oil, NY Harbour 1%	\$/Bbl	97.18	▲ 0.000	▲ 0.000	▲ 0.000
Heating Oil	cents/Gallon	356.12	▼ -38.790	▲ 22.400	▲ 139.350
Propane, Mt. Bel	cents/Gallon	1.08	▼ -0.010	▼ -0.003	▼ -0.104
Ethane, Mt. Bel	cents/Gallon	0.58	▼ -0.031	▲ 0.010	▲ 0.216
Coal, PRB	\$/MTon	12.30	▲ 0.000	▲ 0.000	▲ 0.000
Coal, PRB	\$/MMBtu	0.70			
Coal, ILB	\$/MTon	31.05	▲ 0.000	▲ 0.000	▲ 0.000
Coal, ILB	\$/MMBtu	1.32			

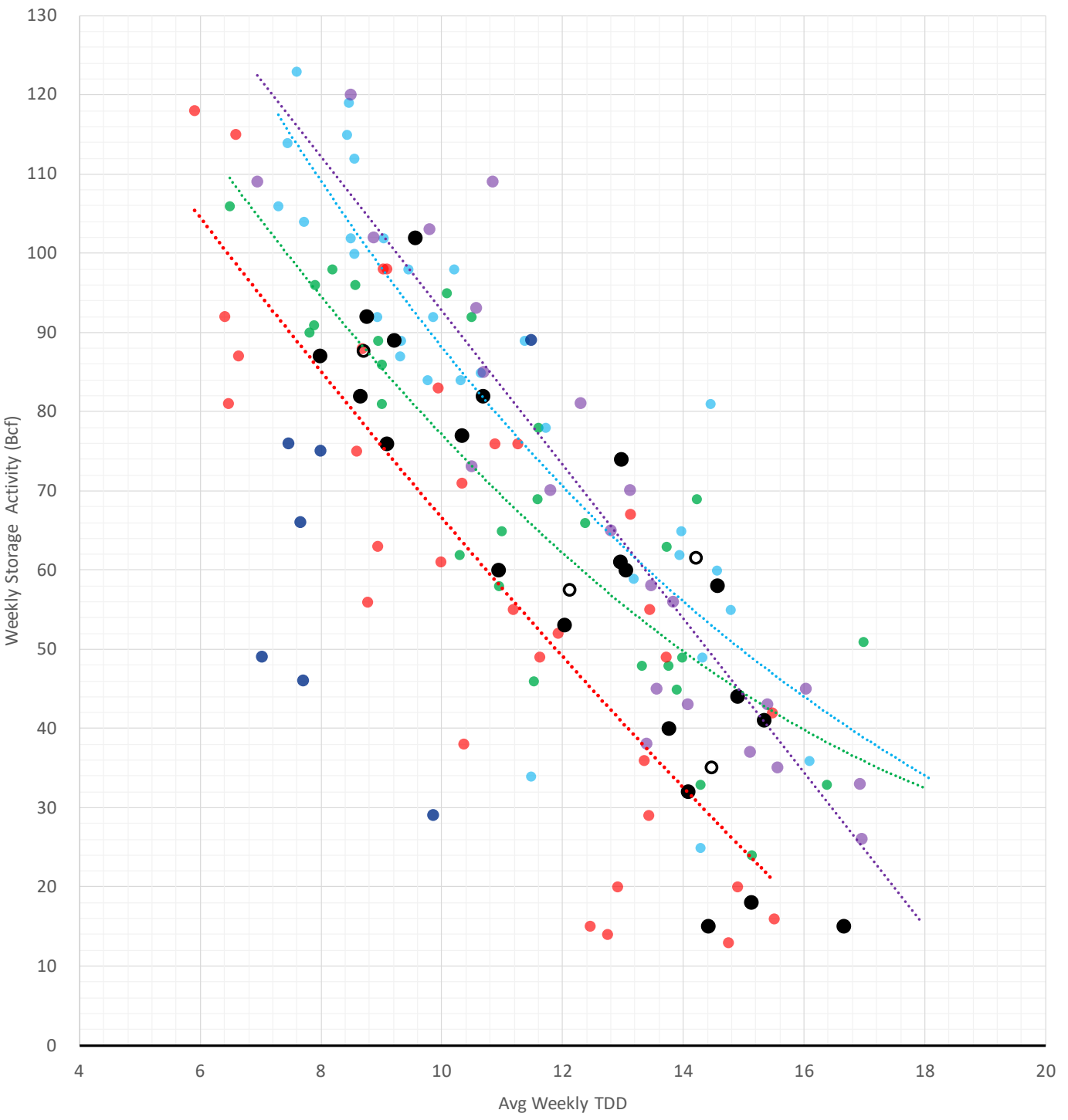
### Nat Gas Term Structure (\$MMBTU)



	OCT 22	NOV 22	DEC 22	JAN 23	FEB 23	MAR 23	APR 23	MAY 23	JUN 23	JUL 23	AUG 23	SEP 23
<b>Henry Hub</b>	\$9.020	\$9.074	\$9.229	\$9.306	\$8.894	\$7.623	\$5.980	\$5.804	\$5.839	\$5.886	\$5.899	\$5.896
<b>JKL</b>	\$59.155	\$56.140	\$60.490	\$61.080	\$58.340	\$52.880	\$43.860	\$42.670	\$43.675	\$43.810	\$44.155	\$44.240
<b>JKL-HHub</b>	\$50.135	\$47.066	\$51.261	\$51.774	\$49.446	\$45.257	\$37.880	\$36.866	\$37.836	\$37.924	\$38.256	\$38.344
<b>TTF</b>	\$71.013	\$72.950	\$73.364	\$72.190	\$70.413	\$68.268	\$60.981	\$55.757	\$53.935	\$53.424	\$53.101	\$53.183
<b>TTF-HHub</b>	\$61.993	\$63.876	\$64.135	\$62.884	\$61.519	\$60.645	\$55.001	\$49.953	\$48.096	\$47.538	\$47.202	\$47.287
<b>NBP</b>	\$55.802	\$66.515	\$74.342	\$74.395	\$73.308	\$68.878	\$57.837	\$52.257	\$50.539	\$49.386	\$48.570	\$50.554
<b>NBP-HHub</b>	\$46.782	\$57.441	\$65.113	\$65.089	\$64.414	\$61.255	\$51.857	\$46.453	\$44.700	\$43.500	\$42.671	\$44.658

### Weather Storage Model - Next 4 Week Forecast

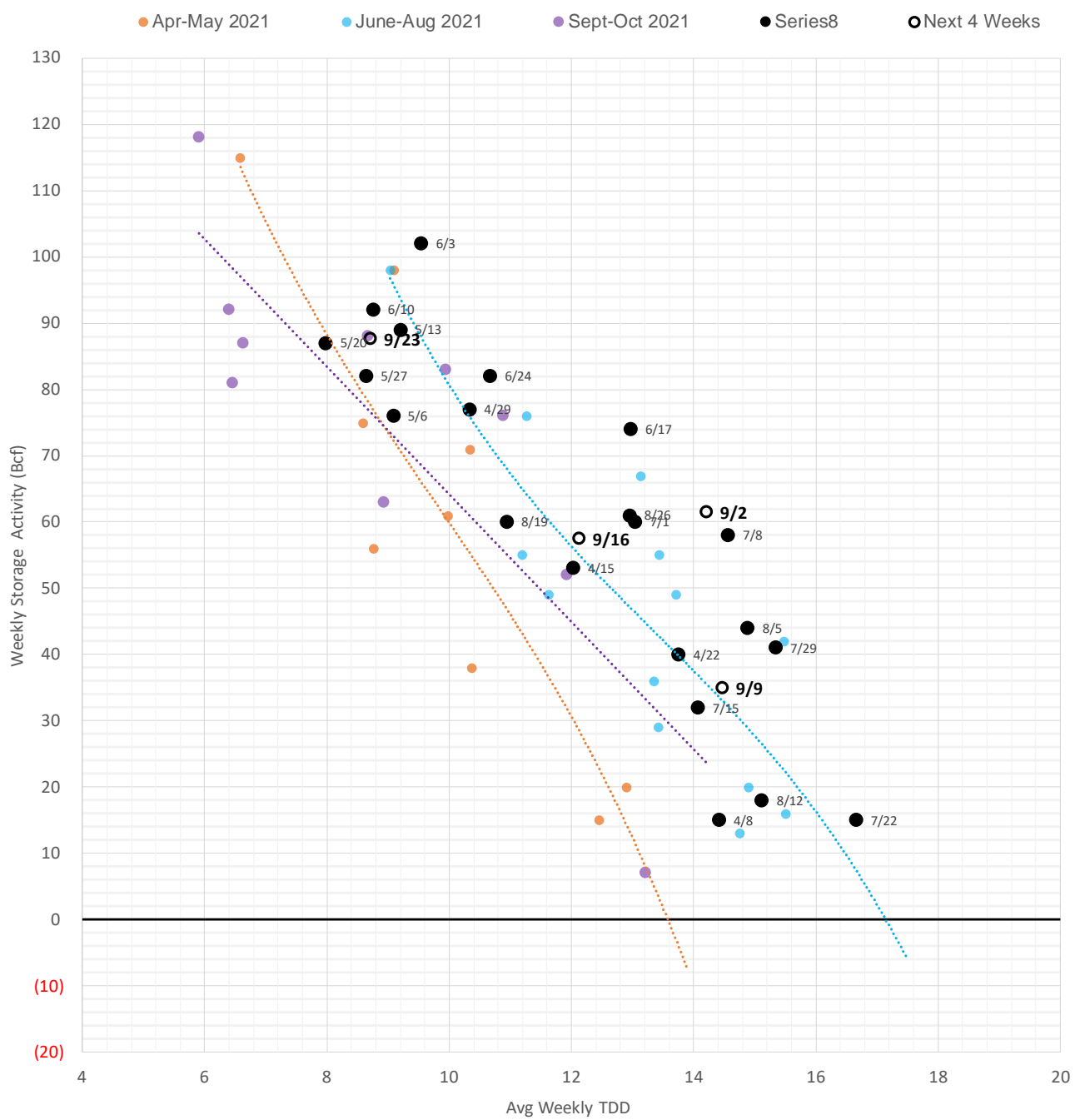
● Summer 18 ● Summer 19 ● Summer 20 Apr-Aug ● Summer 20 Sept-Oct ● Summer 21 ● Summer 22 ○ Next 4 Weeks



The risk of trading futures and options and other derivatives involves a substantial risk of loss and is not suitable for all persons. Each person must consider whether a particular trade, combination of trades, or strategy is suitable for that person's financial means and objectives. Past results are not necessarily indicative of future results. This communication may contain links to third party websites which are not under the control of and are not maintained by ION Energy Group, and ION Energy Group is not responsible for their content.

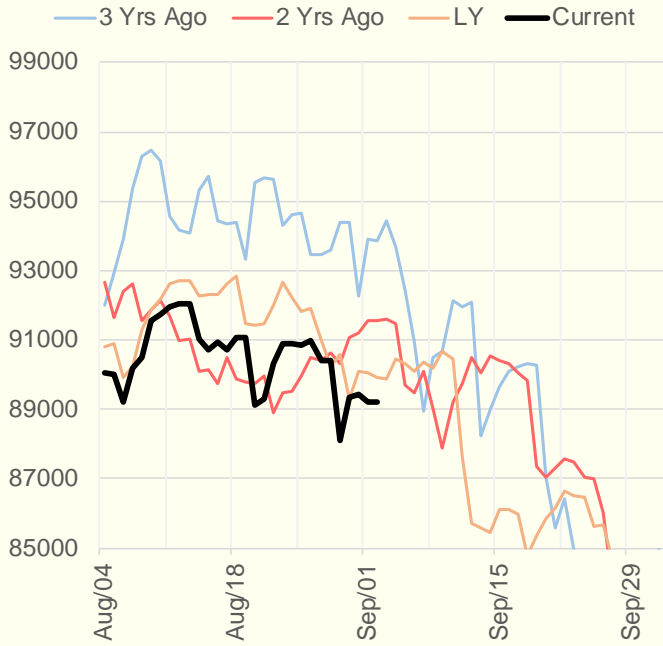


## Weather Storage Model - Next 4 Week Forecast

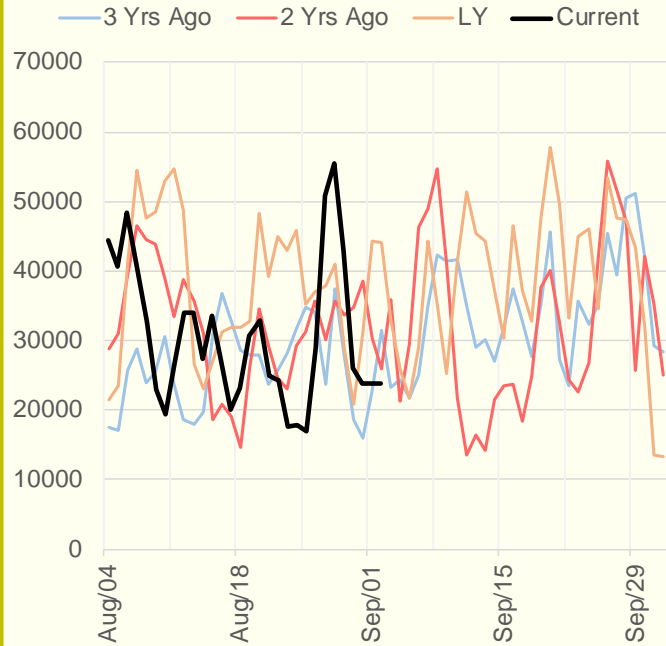


The risk of trading futures and options and other derivatives involves a substantial risk of loss and is not suitable for all persons. Each person must consider whether a particular trade, combination of trades, or strategy is suitable for that person's financial means and objectives. Past results are not necessarily indicative of future results. This communication may contain links to third party websites which are not under the control of and are not maintained by ION Energy Group, and ION Energy Group is not responsible for their content.

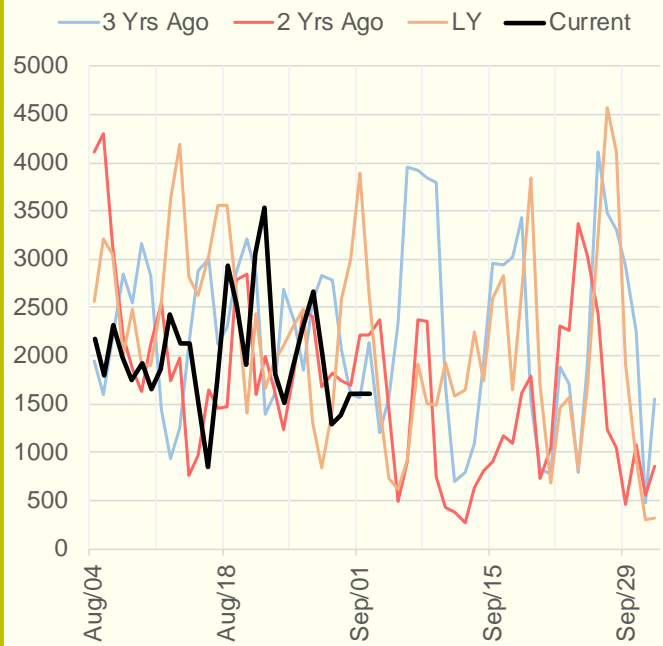
### NRC Nuclear Daily Output



### US Wind



### CALI Wind



### TEXAS Wind

