



Cattle on Feed

ISSN: 1948-9080

Released September 23, 2022, by the National Agricultural Statistics Service (NASS), Agricultural Statistics Board, United States Department of Agriculture (USDA).

United States Cattle on Feed Up Slightly

Cattle and calves on feed for the slaughter market in the United States for feedlots with capacity of 1,000 or more head totaled 11.3 million head on September 1, 2022. The inventory was slightly above September 1, 2021. This is the second highest September 1 inventory since the series began in 1996.

Placements in feedlots during August totaled 2.11 million head, slightly above 2021. Net placements were 2.06 million head. During August, placements of cattle and calves weighing less than 600 pounds were 430,000 head, 600-699 pounds were 320,000 head, 700-799 pounds were 465,000 head, 800-899 pounds were 532,000 head, 900-999 pounds were 270,000 head, and 1,000 pounds and greater were 95,000 head.

Marketings of fed cattle during August totaled 2.00 million head, 6 percent above 2021.

Other disappearance totaled 53,000 head during August, 10 percent below 2021.

Cattle on Feed Inventory, Placements, Marketings, and Other Disappearance on 1,000+ Capacity Feedlots – United States: September 1, 2021 and 2022

Item	2021	2022	Percent of previous year
	(1,000 head)	(1,000 head)	(percent)
On feed August 1	11,074	11,224	101
Placed on feed during August	2,103	2,112	100
Fed cattle marketed during August	1,884	2,004	106
Other disappearance during August	59	53	90
On feed September 1	11,234	11,279	100

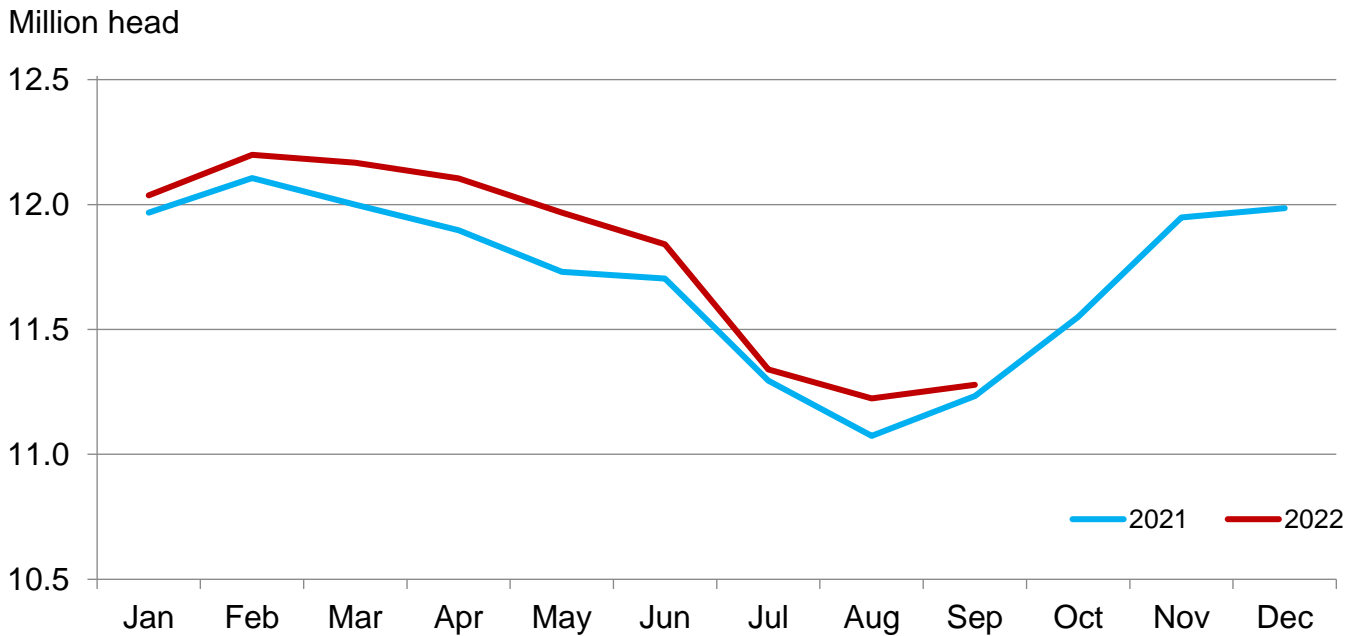
Cattle on Feed Inventory, Placements, Marketings, and Other Disappearance on 1,000+ Capacity Feedlots – United States: August 1, 2021 and 2022

Item	2021	2022	Percent of previous year
	(1,000 head)	(1,000 head)	(percent)
On feed July 1	11,295	11,340	100
Placed on feed during July	1,733	1,764	102
Fed cattle marketed during July	1,899	1,824	96
Other disappearance during July	55	56	102
On feed August 1	11,074	11,224	101

Cattle on Feed Inventory on 1,000+ Capacity Feedlots by Month – States and United States: 2021 and 2022

State	September 1, 2021	August 1, 2022	September 1, 2022		
			Inventory	Percent of previous year	Percent of previous month
	(1,000 head)	(1,000 head)	(1,000 head)	(percent)	(percent)
Arizona	269	279	274	102	98
California	530	545	520	98	95
Colorado	1,080	1,040	1,030	95	99
Idaho	290	275	275	95	100
Iowa	590	580	590	100	102
Kansas	2,470	2,340	2,380	96	102
Minnesota	90	85	90	100	106
Nebraska	2,280	2,320	2,370	104	102
Oklahoma	275	275	280	102	102
South Dakota	200	165	175	88	106
Texas	2,700	2,850	2,820	104	99
Washington	195	200	200	103	100
Other States	265	270	275	104	102
United States	11,234	11,224	11,279	100	100

Cattle on Feed Inventory on 1,000+ Capacity Feedlots – United States

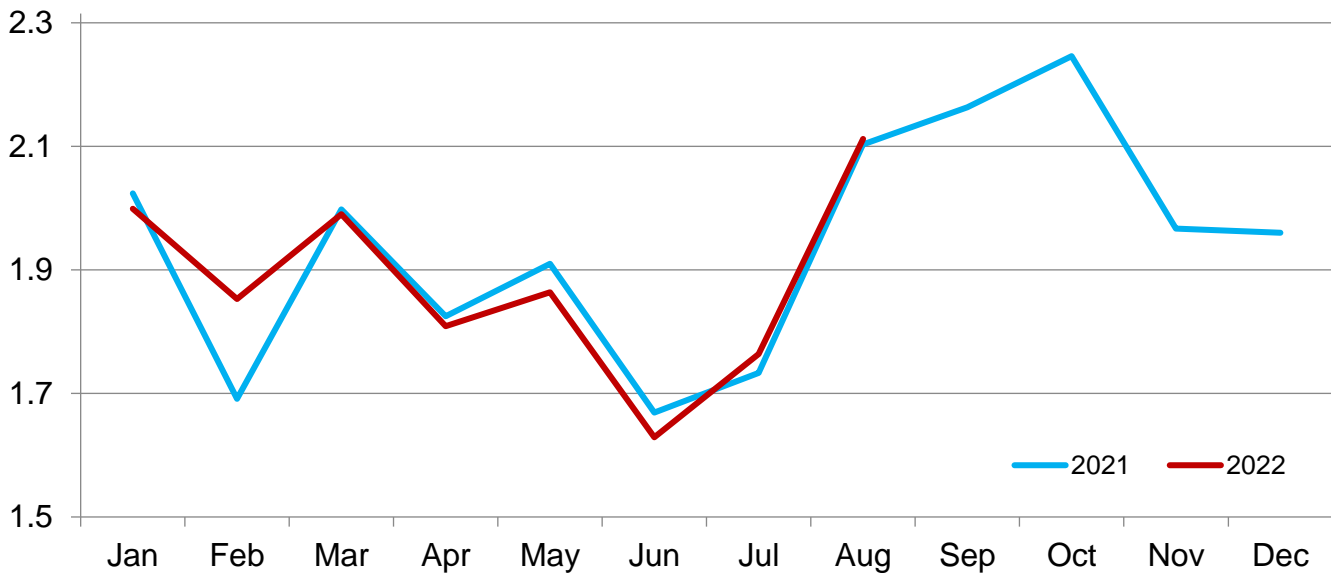


Cattle Placed on Feed on 1,000+ Capacity Feedlots by Month – States and United States: 2021 and 2022

State	During August 2021 (1,000 head)	During July 2022 (1,000 head)	During August 2022		
			Placements (1,000 head)	Percent of previous year (percent)	Percent of previous month (percent)
Arizona	19	22	20	105	91
California	52	50	50	96	100
Colorado	220	160	180	82	113
Idaho	53	31	45	85	145
Iowa	77	60	89	116	148
Kansas	530	445	535	101	120
Minnesota	14	10	18	129	180
Nebraska	555	445	570	103	128
Oklahoma	57	48	49	86	102
South Dakota	44	26	43	98	165
Texas	395	395	430	109	109
Washington	36	28	32	89	114
Other States	51	44	51	100	116
United States	2,103	1,764	2,112	100	120

Cattle Placed on 1,000+ Capacity Feedlots – United States

Million head



Cattle Placed on Feed by Weight Group on 1,000+ Capacity Feedlots and Month – States and United States: 2021 and 2022

State	During August 2021							
	Under 600 lbs	600-699 lbs	700-799 lbs	800-899 lbs	900+ lbs ¹	900-999 lbs	1,000+ lbs	Total
	(1,000 head)	(1,000 head)	(1,000 head)	(1,000 head)	(1,000 head)	(1,000 head)	(1,000 head)	(1,000 head)
Colorado	35	35	45	60	45	(D)	(D)	220
Kansas	65	90	165	140	70	(D)	(D)	530
Nebraska	45	50	115	175	170	(D)	(D)	555
Texas	160	100	80	45	10	(D)	(D)	395
Other States ...	100	40	75	108	80	(D)	(D)	403
United States ..	405	315	480	528	(X)	275	100	2,103
State	During July 2022							
	Under 600 lbs	600-699 lbs	700-799 lbs	800-899 lbs	900+ lbs ¹	900-999 lbs	1,000+ lbs	Total
	(1,000 head)	(1,000 head)	(1,000 head)	(1,000 head)	(1,000 head)	(1,000 head)	(1,000 head)	(1,000 head)
Colorado	35	30	35	35	25	(D)	(D)	160
Kansas	60	80	140	110	55	(D)	(D)	445
Nebraska	35	50	100	145	115	(D)	(D)	445
Texas	185	85	70	40	15	(D)	(D)	395
Other States ...	90	35	60	74	60	(D)	(D)	319
United States ..	405	280	405	404	(X)	195	75	1,764
State	During August 2022							
	Under 600 lbs	600-699 lbs	700-799 lbs	800-899 lbs	900+ lbs ¹	900-999 lbs	1,000+ lbs	Total
	(1,000 head)	(1,000 head)	(1,000 head)	(1,000 head)	(1,000 head)	(1,000 head)	(1,000 head)	(1,000 head)
Colorado	30	30	35	50	35	(D)	(D)	180
Kansas	65	100	170	135	65	(D)	(D)	535
Nebraska	45	50	110	190	175	(D)	(D)	570
Texas	190	100	80	50	10	(D)	(D)	430
Other States ...	100	40	70	107	80	(D)	(D)	397
United States ..	430	320	465	532	(X)	270	95	2,112

(D) Withheld to avoid disclosing data for individual operations.

(X) Not applicable.

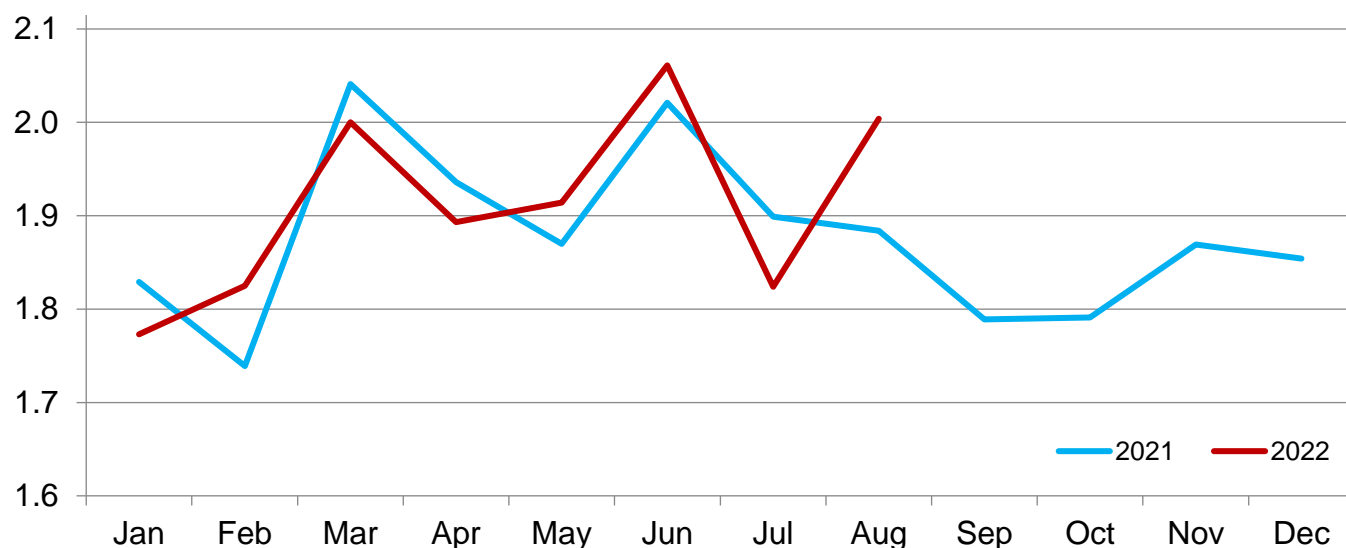
¹ The 900 pounds and greater weight group is the sum of 900-999 pounds and 1,000 pounds and greater weight groups.

Cattle Marketed on 1,000+ Capacity Feedlots by Month – States and United States: 2021 and 2022

State	During August 2021	During July 2022	During August 2022		
			Marketings	Percent of previous year	Percent of previous month
	(1,000 head)	(1,000 head)	(1,000 head)	(percent)	(percent)
Arizona	23	22	24	104	109
California	54	59	68	126	115
Colorado	175	175	185	106	106
Idaho	37	35	44	119	126
Iowa	85	58	78	92	134
Kansas	460	445	485	105	109
Minnesota	18	14	12	67	86
Nebraska	465	485	510	110	105
Oklahoma	51	42	42	82	100
South Dakota	37	30	31	84	103
Texas	400	390	450	113	115
Washington	30	27	31	103	115
Other States	49	42	44	90	105
United States	1,884	1,824	2,004	106	110

Cattle Marketed on 1,000+ Capacity Feedlots – United States

Million head



Cattle Other Disappearance on 1,000+ Capacity Feedlots by Month – States and United States: 2021 and 2022

State	During August 2021 (1,000 head)	During July 2022 (1,000 head)	During August 2022		
			Other disappearance (1,000 head)	Percent of previous year (percent)	Percent of previous month (percent)
Arizona	1	1	1	100	100
California	8	6	7	88	117
Colorado	5	5	5	100	100
Idaho	1	1	1	100	100
Iowa	2	2	1	50	50
Kansas	10	10	10	100	100
Minnesota	1	1	1	100	100
Nebraska	10	10	10	100	100
Oklahoma	1	1	2	200	200
South Dakota	2	1	2	100	200
Texas	15	15	10	67	67
Washington	1	1	1	100	100
Other States	2	2	2	100	100
United States	59	56	53	90	95

Terms and Definitions of Cattle on Feed Estimates

Cattle on feed are steers and heifers being fed a ration of grain, silage, hay and/or protein supplement for slaughter market that are expected to produce a carcass that will grade select or better. It excludes cattle being "backgrounded only" for later sale as feeders or later placement in another feedlot.

Placements are steers and heifers put into a feedlot, fed a ration which will produce a carcass that will grade select or better, and are intended for the slaughter market.

Marketings are steers and heifers shipped out of feedlots to a slaughter market.

Other disappearance includes death loss, movement from feedlots to pasture, and shipments to other feedlots for further feeding.

Statistical Methodology

Survey Procedures: During January and July all known feedlots in the United States with capacity of 1,000 or more head are surveyed to provide data for cattle on feed estimates. During the other months, all known feedlots from 16 States are surveyed. The 16 States account for approximately 98 percent of the cattle on feed in feedlots with capacity of 1,000 or more head. Individual State estimates are published monthly for 12 of the 16 States. Data collected from the remaining 4 States are used to establish the "Other States" estimates. These 4 States include Illinois, New Mexico, Oregon, and Wyoming. The "Other States" category represents all cattle on feed with a capacity of 1,000 or more head for the rest of the United States.

Estimating Procedures: These cattle on feed estimates were prepared by the Agricultural Statistics Board after reviewing recommendations and analysis submitted by Regional Field Offices. Regional and State survey data were reviewed for reasonableness with each other and with estimates from the previous month when establishing the current estimates.

Revision Policy: Revisions to previous estimates are made to improve month to month relationships. Estimates for the previous month are subject to revision in all States each month when current estimates are made. In February, all monthly estimates for the previous year, and the number of feedlots and annual marketings from two years ago are reviewed and subject to revisions. The reviews are primarily based on slaughter data, state check-off or brand data, and any other data that may have been received after the original estimate was made. Estimates will also be reviewed after data from the *Census of Agriculture* are available. No revisions will be made after that date and estimates become final.

Reliability: Since all 1,000+ capacity cattle on feed operators in every State are not included in the monthly survey, survey estimates are subject to sampling variability. Survey results are also subject to non-sampling errors such as omissions, duplications, and mistakes in reporting, recording, and processing the data. The effects of these errors cannot be measured directly. They are minimized through rigid quality controls in the data collection process and through a careful review of all reported data for consistency and reasonableness.

To assist users in evaluating the reliability of estimates in this report, the "**Root Mean Square Error**" is shown for selected items in the table on the following page. The "Root Mean Square Error" is a statistical measure based on past performance and is computed using the differences between first and latest estimates. The "Root Mean Square Error" for cattle on feed inventory estimates over the past 24 months is 0.0 percent. This means that chances are 2 out of 3 that the final estimate will not be above or below the current estimate of 11.3 million head by more than 0.0 percent. Chances are 9 out of 10 that the difference will not exceed 0.0 percent.

The table on the following page shows a 24-month record of the range of differences between first and latest estimates for selected items. Using estimates of number on feed as an example, changes between the first estimate and the latest estimate during the past 24 months have averaged 1,000 head, ranging from 0 to 6,000 head. During this period the initial estimate has been above the latest estimate 1 time and has been below the latest estimate 5 times. This does not imply that the initial estimate is likely to understate or overstate final inventory.

Reliability of Monthly Cattle on Feed Estimates

[Based on data for the past 24 months]

Item	Root mean square error	90 percent confidence level	Difference between first and latest estimate				
			Average	Smallest	Largest	Months	
						Below latest	Above latest
	(percent)	(percent)	(1,000)	(1,000)	(1,000)	(number)	(number)
On feed	0.0	0.0	1	0	6	5	1
Placements	0.2	0.3	2	0	7	7	9
Marketings	0.1	0.2	1	0	7	4	8

Information Contacts

Listed below are the commodity specialists in the Livestock Branch of the National Agricultural Statistics Service to contact for additional information. E-mail inquiries may be sent to nass@usda.gov.

Travis Averill, Chief, Livestock Branch	(202) 692-0069
Scott Hollis, Head, Livestock Section	(202) 690-2424
Sherry Bertramsen – Livestock Slaughter	(202) 690-8632
Ryan Cowen – Cattle, Cattle on Feed	(202) 720-3040
Anthony Fischer – Hogs and Pigs	(202) 720-3106
Mike Miller – Milk Production and Milk Cows	(202) 720-3278
Suzanne Richards – Dairy Products	(202) 720-4448
Vacant – Sheep and Goats	(202) 690-3236

Access to NASS Reports

For your convenience, you may access NASS reports and products the following ways:

- All reports are available electronically, at no cost, on the NASS web site: www.nass.usda.gov.
- Both national and state specific reports are available via a free e-mail subscription. To set-up this free subscription, visit www.nass.usda.gov and click on “National” or “State” in upper right corner above “search” box to create an account and select the reports you would like to receive.
- Cornell’s Mann Library has launched a new website housing NASS’s and other agency’s archived reports. The new website, <https://usda.library.cornell.edu>. All email subscriptions containing reports will be sent from the new website, <https://usda.library.cornell.edu>. To continue receiving the reports via e-mail, you will have to go to the new website, create a new account and re-subscribe to the reports. If you need instructions to set up an account or subscribe, they are located at: <https://usda.library.cornell.edu/help>. You should whitelist notifications@usda-esmis.library.cornell.edu in your email client to avoid the emails going into spam/junk folders.

For more information on NASS surveys and reports, call the NASS Agricultural Statistics Hotline at (800) 727-9540, 7:30 a.m. to 4:00 p.m. ET, or e-mail: nass@usda.gov.

The U.S. Department of Agriculture (USDA) prohibits discrimination against its customers, employees, and applicants for employment on the basis of race, color, national origin, age, disability, sex, gender identity, religion, reprisal, and where applicable, political beliefs, marital status, familial or parental status, sexual orientation, or all or part of an individual's income is derived from any public assistance program, or protected genetic information in employment or in any program or activity conducted or funded by the Department. (Not all prohibited bases will apply to all programs and/or employment activities.)

If you wish to file a Civil Rights program complaint of discrimination, complete the [USDA Program Discrimination Complaint Form](#) (PDF), found online at www.ascr.usda.gov/filing-program-discrimination-complaint-usda-customer, or at any USDA office, or call (866) 632-9992 to request the form. You may also write a letter containing all of the information requested in the form. Send your completed complaint form or letter to us by mail at U.S. Department of Agriculture, Director, Office of Adjudication, 1400 Independence Avenue, S.W., Washington, D.C. 20250-9410, by fax (202) 690-7442 or email at program.intake@usda.gov.