

CFTC COMMITMENT OF TRADERS REPORT

As of 10/11/2022

TRADITIONAL FUNDS net position changes

Wed to Tue, in 000 contracts

	Corn	Bean	Meal	Oil	Chi. Wheat	KC Wheat	Min Wheat
Futures Only	20.2	(11.0)	(9.3)	(2.2)	(7.6)	1.0	(0.2)
Futures & Options Combined	23.2	(12.8)	(10.5)	(1.5)	(8.7)	1.2	(0.2)

TRADITIONAL COMMERCIAL net position changes

	Corn	Bean	Meal	Oil	Chi. Wheat	KC Wheat	Min Wheat
Futures Only	(18.3)	9.5	7.5	(0.3)	6.8	(1.1)	0.8
Futures & Options Combined	(20.3)	10.6	8.5	(1.1)	8.0	(1.2)	0.8

MANAGED MONEY net position changes

	Corn	Bean	Meal	Oil	Chi. Wheat	KC Wheat	Min Wheat
Futures Only	25.7	(11.8)	(9.3)	(1.7)	(7.2)	0.9	0.3
Futures & Options Combined	23.6	(11.8)	(9.3)	(1.8)	(7.3)	0.9	0.3

SWAP DEALERS net position changes

	Corn	Bean	Meal	Oil	Chi. Wheat	KC Wheat	Min Wheat
Futures Only	4.0	(0.5)	(1.6)	(1.0)	1.8	2.7	0.4
Futures & Options Combined	2.6	(0.4)	(1.0)	(1.0)	1.7	2.6	0.4

PRODUCERS/END USERS net position changes

	Corn	Bean	Meal	Oil	Chi. Wheat	KC Wheat	Min Wheat
Futures Only	(22.2)	10.0	9.2	0.7	5.0	(3.8)	0.5
Futures & Options Combined	(22.9)	11.0	9.5	(0.1)	6.3	(3.9)	0.5

INDEX net position changes

	Corn	Bean	Meal	Oil	Chi. Wheat	KC Wheat	Min Wheat
Futures & Options Combined	6.7	(5.8)	(5.7)	(1.4)	(1.5)	0.2	NA

SUPPLEMENTAL NON-COMMERCIAL net position changes

	Corn	Bean	Meal	Oil	Chi. Wheat	KC Wheat	Min Wheat
Futures & Options Combined	18.7	(8.8)	(8.0)	(2.4)	(6.6)	1.3	NA

OPEN INTEREST net position changes

Wed to Tue, in 000 contracts

	Corn	Bean	Meal	Oil	Chi. Wheat	KC Wheat	Min Wheat
Futures Only	43.3	17.8	0.3	(14.9)	16.3	3.1	1.1
Futures & Options Combined	57.0	22.8	2.2	(13.5)	19.8	4.5	1.2

Source: CFTC and FI

Wed to Tue, in 000 contracts

10/14/2022

**COMMITMENT OF TRADERS
FUTURES ONLY NET POSITIONS
AS OF 10/11/2022
(IN THOUSAND CONTRACTS)**

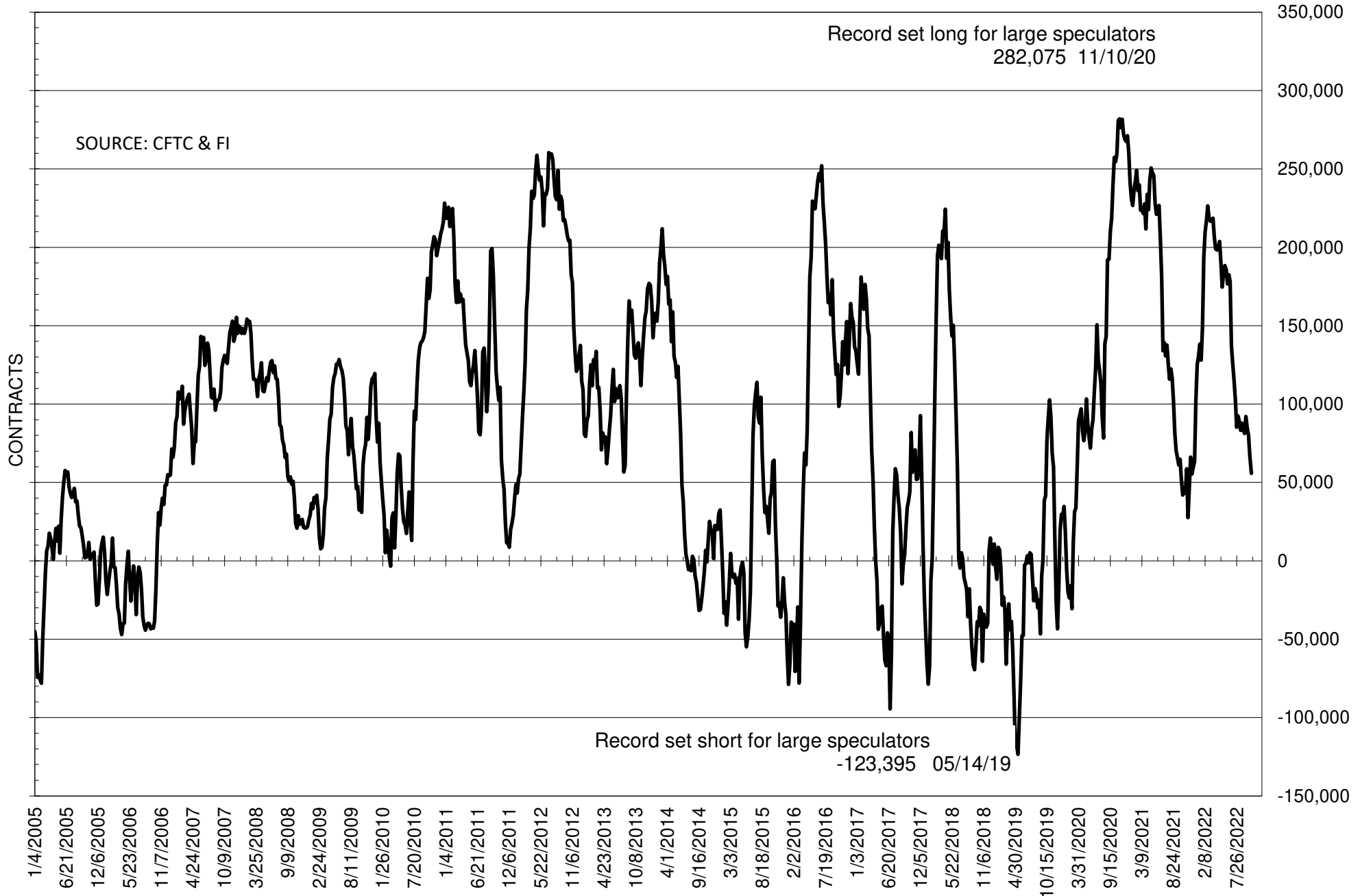
	COMMERCIAL				(FUND) NON COMMERCIAL				(SPEC) NON-REPORTABLE			
	11-Oct	4-Oct	27-Sep	20-Sep	11-Oct	4-Oct	27-Sep	20-Sep	11-Oct	4-Oct	27-Sep	20-Sep
	WHEAT											
Chicago	8.7	1.9	4.7	10.0	-2.0	5.6	2.7	-4.0	-6.7	-7.5	-7.4	-6.0
Kansas City	-20.0	-18.9	-18.7	-15.3	22.8	21.8	21.2	17.1	-2.8	-2.9	-2.4	-1.8
Minneapolis	-6.7	-7.5	-6.8	-5.1	6.7	6.9	7.3	5.6	0.0	0.6	-0.5	-0.5
All Wheat	-18.0	-24.6	-20.8	-10.4	27.5	34.3	31.2	18.6	-9.5	-9.7	-10.4	-8.2
CORN	-258.2	-240.0	-229.4	-241.2	325.1	305.0	296.6	305.7	-66.9	-65.0	-67.2	-64.4
OATS	-0.9	-0.8	-0.8	-0.7	0.0	0.0	0.0	0.0	0.9	0.9	0.8	0.7
SOYBEANS	-30.6	-40.1	-50.2	-55.5	55.8	66.8	80.1	84.8	-25.2	-26.7	-29.8	-29.3
SOY OIL	-68.2	-67.9	-61.0	-66.7	57.9	60.0	55.0	57.4	10.3	7.8	6.0	9.3
SOY MEAL	-118.4	-126.0	-138.4	-151.9	96.6	105.9	115.1	126.5	21.8	20.0	23.3	25.4

Oats positions thin to be reported

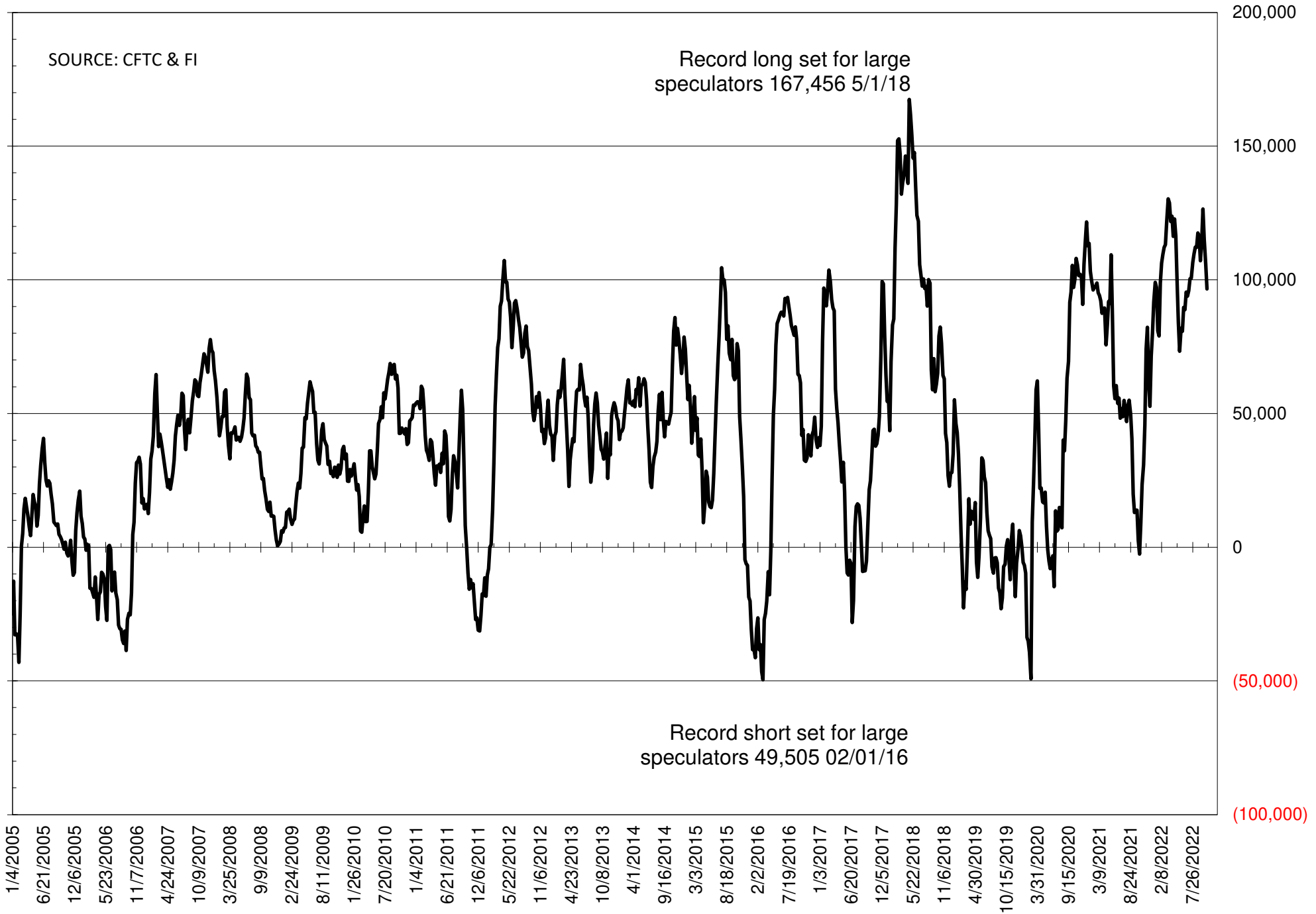
	TOTAL OPEN INTEREST				NEARBY FUTURES PRICE					11-Oct-22 LAST REPORTED % HELD BY TRADERS			
	11-Oct	4-Oct	27-Sep	20-Sep	X/Z Latest	X/Z 11-Oct	X/Z 4-Oct	V/X/Z 27-Sep	V/X/Z 20-Sep	LARGE FUND		SMALL	
										LONG	SHORT	LONG	SHORT
WHEAT													
Chicago	307901	291614	290771	285567	859.75	901.00	903.00	871.50	893.75	0%	28%	0%	11%
Kansas City	156583	153441	153947	154904	952.25	990.75	988.75	943.25	963.00	0%	14%	0%	14%
Minneapolis	56767	55640	54988	54915	954.25	987.00	976.75	943.25	959.25	0%	5%	0%	17%
CORN	1408939	1365622	1347278	1330841	689.75	693.00	683.00	667.50	692.00	0%	9%	0%	13%
OATS	3914	3848	3844	3733	397.75	392.25	403.50	370.00	413.25	0%	21%	0%	27%
SOYBEANS	694960	677178	699311	656310	1383.75	1376.25	1383.50	1408.00	1478.75	19%	11%	7%	11%
SOY OIL	391726	406640	405478	404366	65.30	65.47	65.02	65.66	68.59	0%	8%	0%	6%
SOY MEAL	360308	359963	380991	392512	411.10	406.00	401.50	426.10	450.80	0%	6%	0%	7%

SOURCE: CFTC & FI

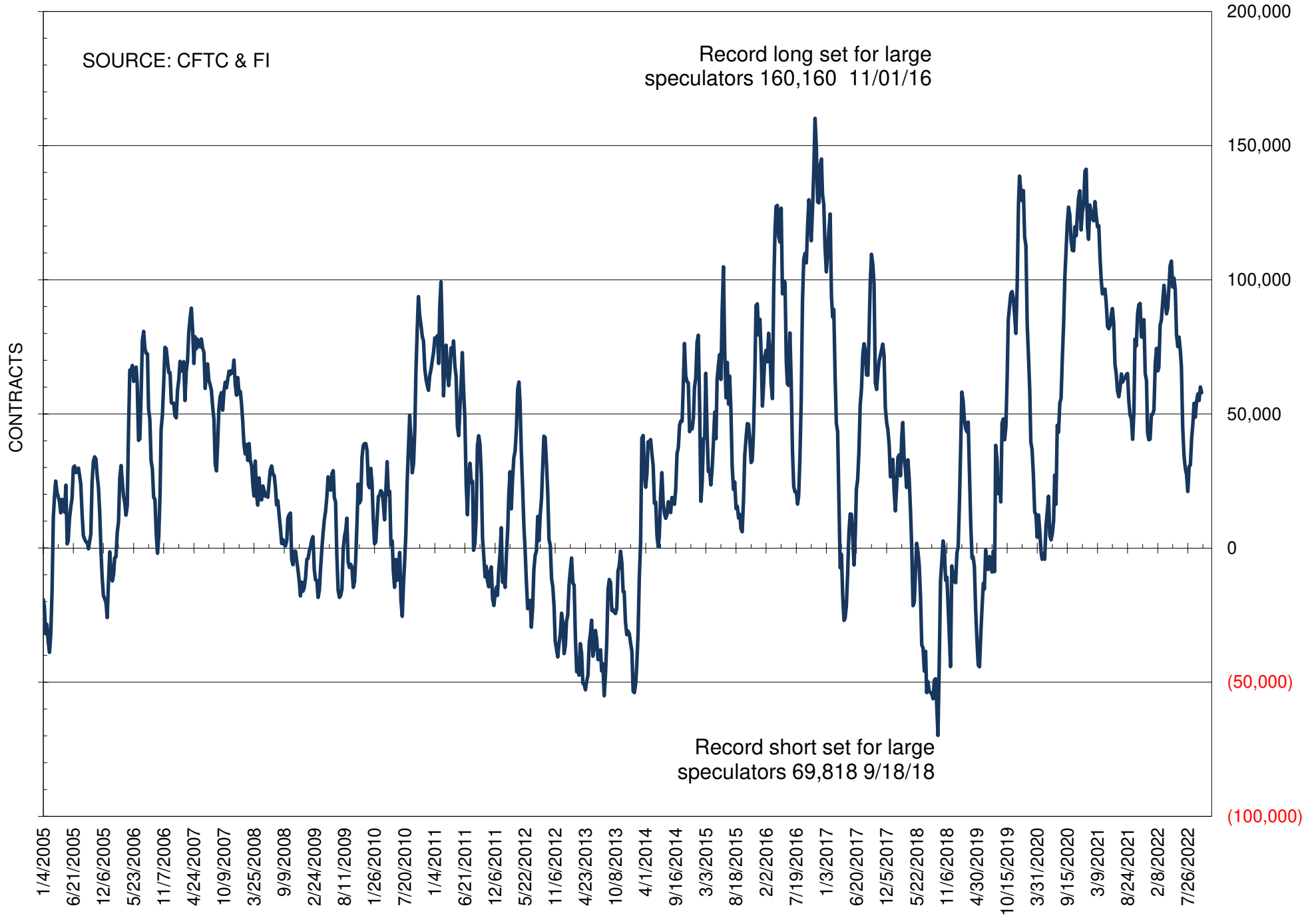
NET POSITION OF FUTURES ONLY LARGE SPECS IN SOYBEANS



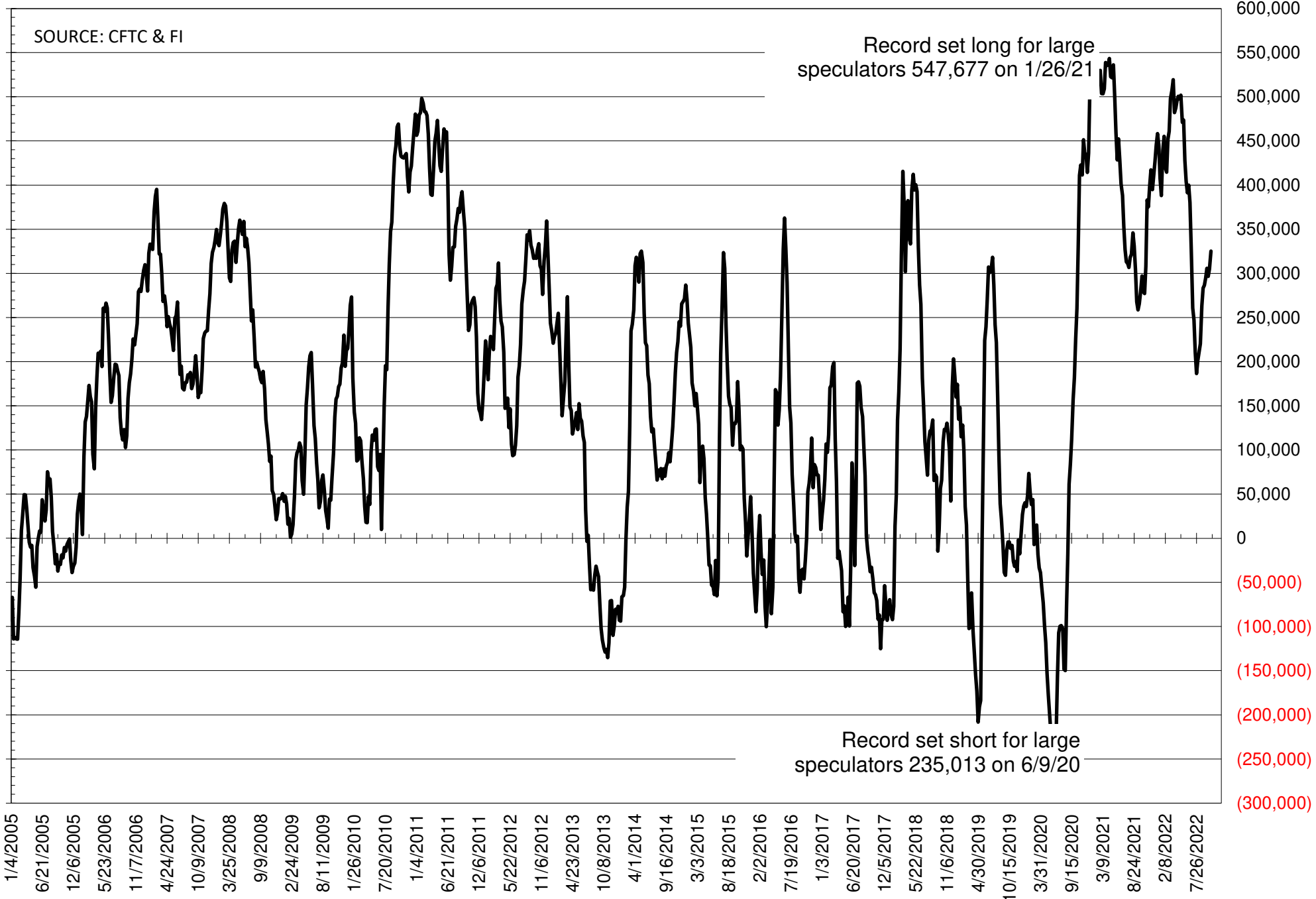
NET POSITION OF FUTURES ONLY LARGE SPECS IN SOYMEAL



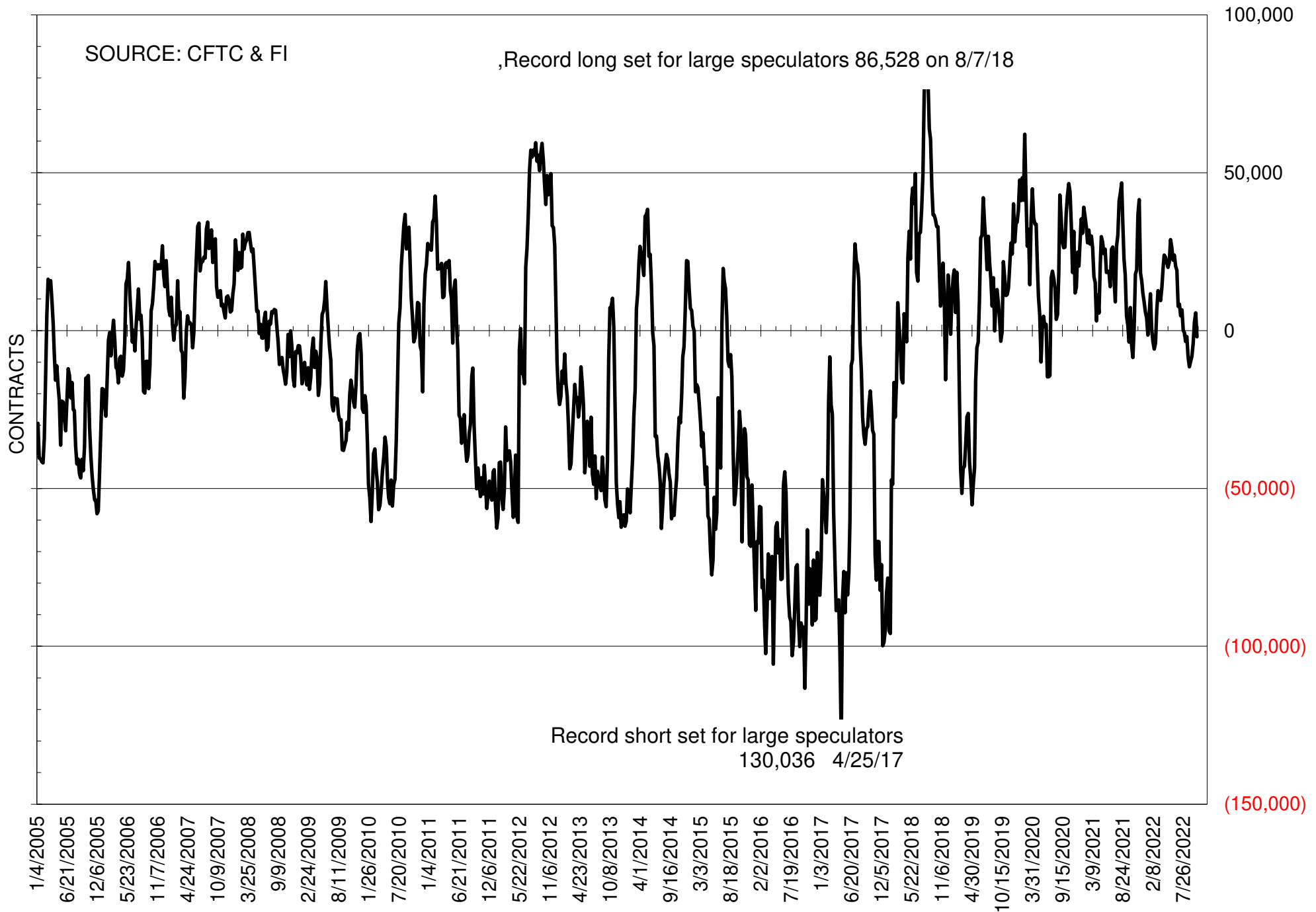
NET POSITION OF FUTURES ONLY LARGE SPECS IN SOYOIL



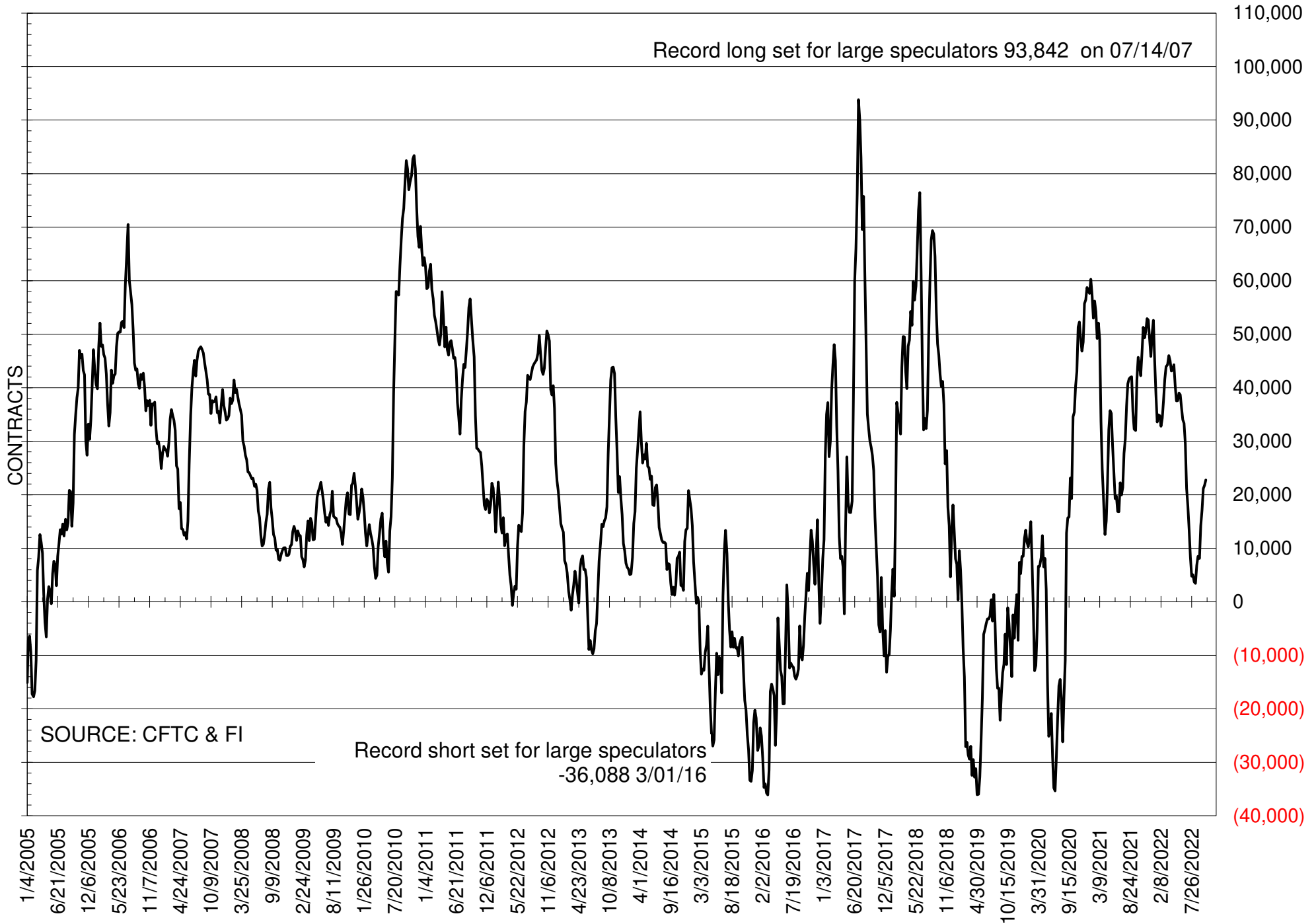
NET POSITION OF LARGE SPECULATORS IN CORN



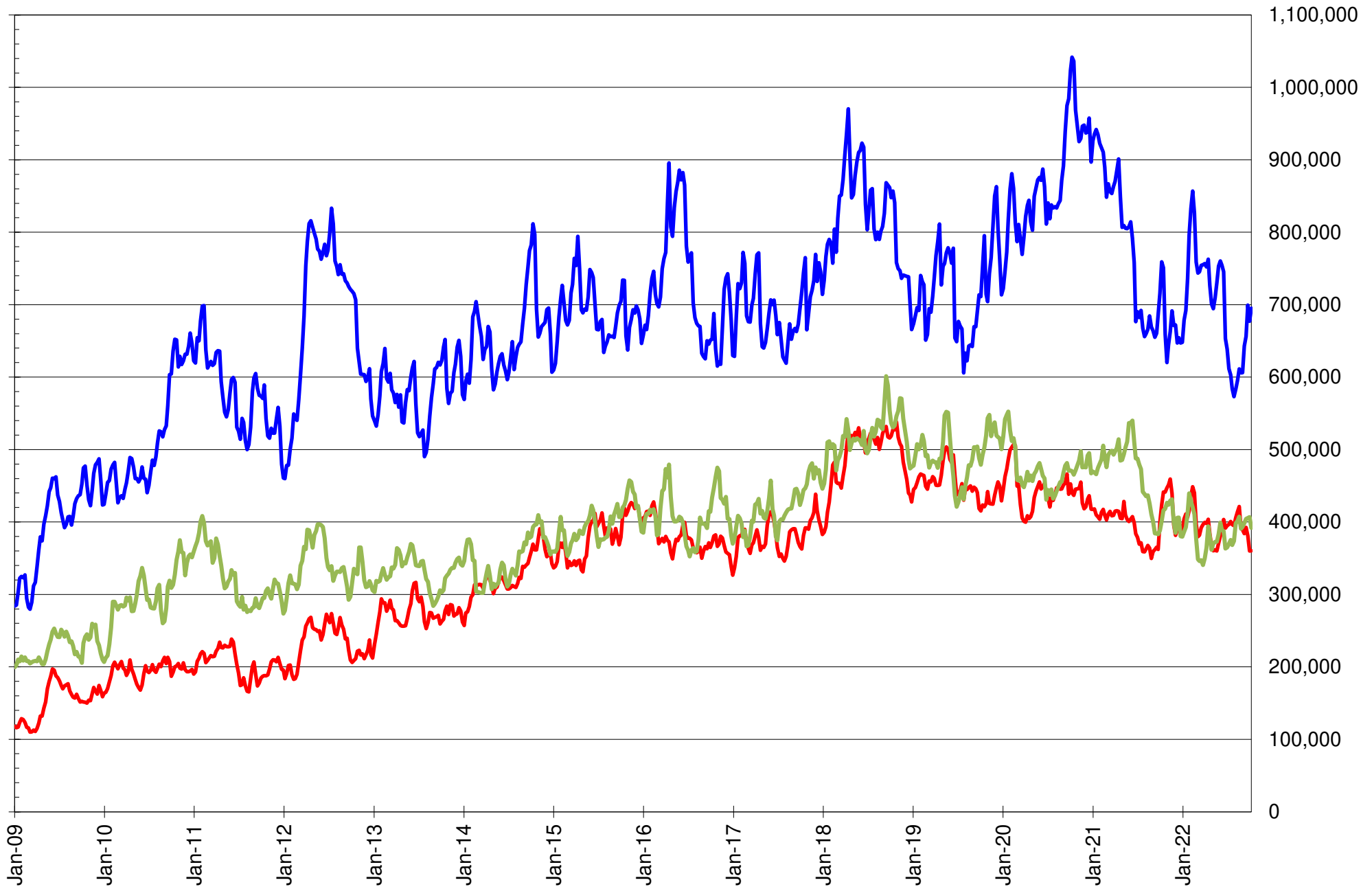
NET POSITION OF FUTURES ONLY LARGE SPECS IN CHICAGO WHEAT



NET POSITION OF LARGE SPECULATORS IN KANSAS CITY WHEAT



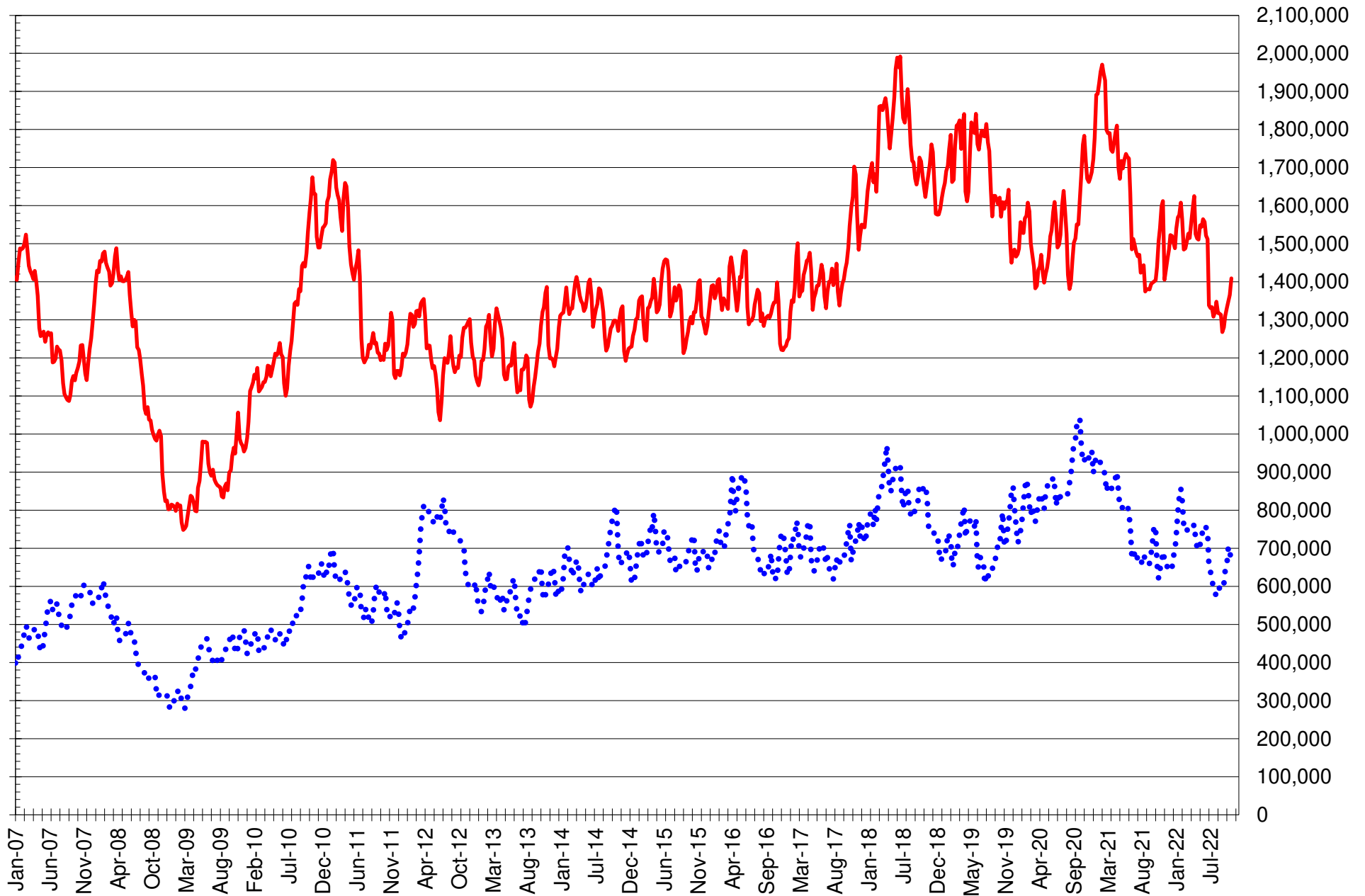
TOTAL OPEN INTEREST IN SOYBEANS, MEAL AND OIL, FUTURES ONLY



SOURCE: CFTC & FI

— SOYBEANS — SOYBEAN MEAL — SOYBEAN OIL

TOTAL OPEN INTEREST IN CORN AND SOYBEANS, FUTURES ONLY



SOURCE: CFTC & FI

— CORN

•••• SOYBEANS

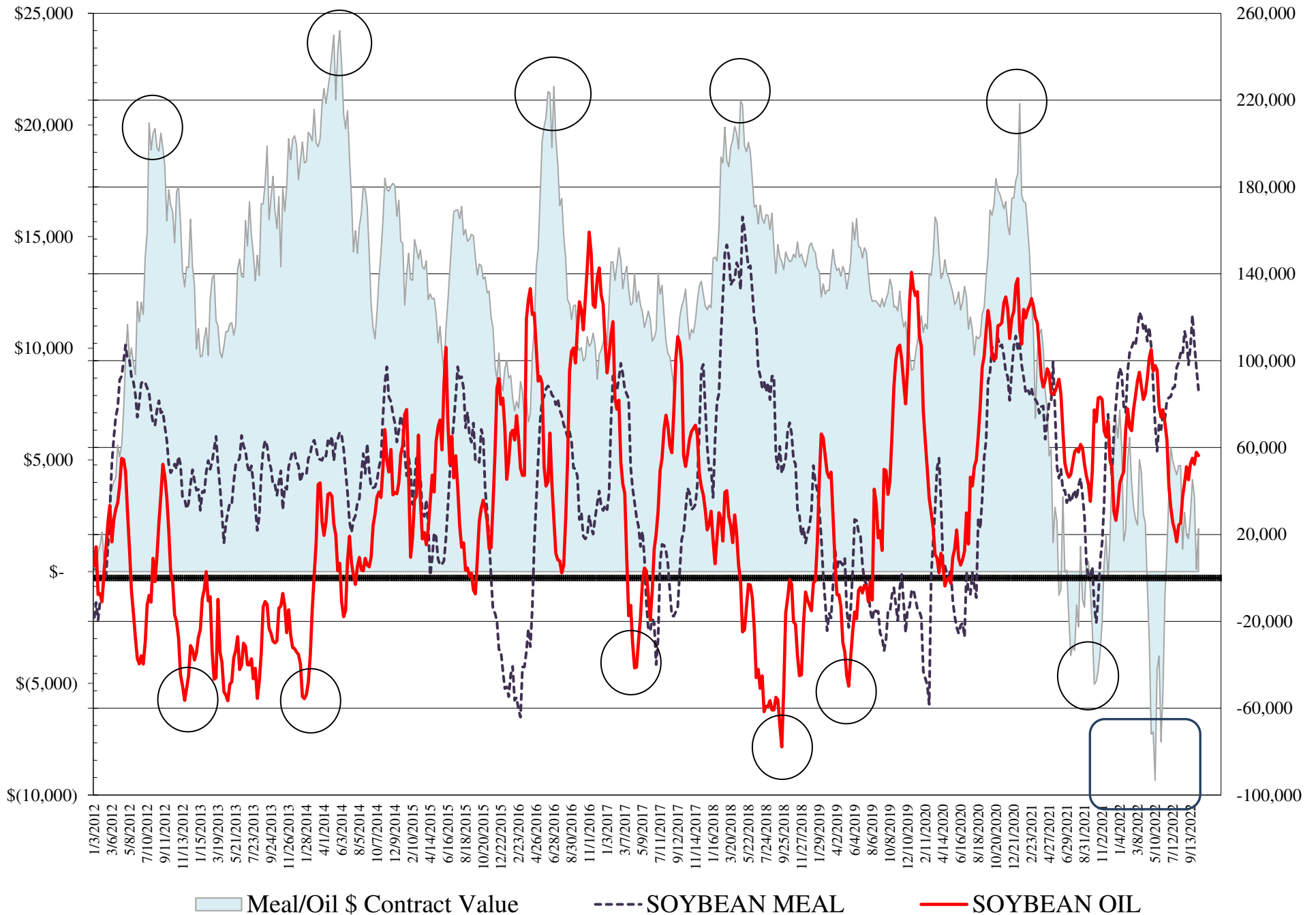
**COMMITMENT OF TRADERS
FUTURES & OPTIONS NET POSITIONS
AS OF 10/11/2022
(IN THOUSAND CONTRACTS)**

	COMMERCIAL				(FUND) NON COMMERCIAL				(SPEC) NON-REPORTABLE			
	11-Oct	4-Oct	27-Sep	20-Sep	11-Oct	4-Oct	27-Sep	20-Sep	11-Oct	4-Oct	27-Sep	20-Sep
WHEAT												
Chicago	11.5	3.5	4.9	11.4	-5.0	3.7	1.9	-6.4	-6.4	-7.2	-6.8	-5.1
Kansas City	-21.0	-19.8	-19.7	-16.5	23.2	22.0	21.6	17.7	-2.2	-2.2	-2.0	-1.2
Minneapolis	-6.8	-7.6	-6.8	-5.0	6.7	6.9	7.2	5.4	0.1	0.7	-0.5	-0.4
All Wheat	-16.4	-23.9	-21.5	-10.1	24.9	32.6	30.7	16.7	-8.5	-8.7	-9.2	-6.6
CORN	-247.6	-227.3	-213.5	-235.7	316.4	293.2	283.8	302.2	-68.8	-65.9	-70.3	-66.5
OATS	-0.8	-0.7	-0.8	-0.7	-0.1	-0.1	-0.1	-0.1	0.9	0.9	0.8	0.8
SOYBEANS	-21.1	-31.7	-42.7	-55.8	51.6	64.4	79.1	90.2	-30.5	-32.8	-36.4	-34.4
SOY OIL	-67.1	-66.0	-58.9	-65.0	56.3	57.8	52.3	55.1	10.8	8.2	6.5	9.9
SOY MEAL	-110.8	-119.3	-133.2	-148.5	86.5	96.9	107.8	120.9	24.3	22.3	25.4	27.6

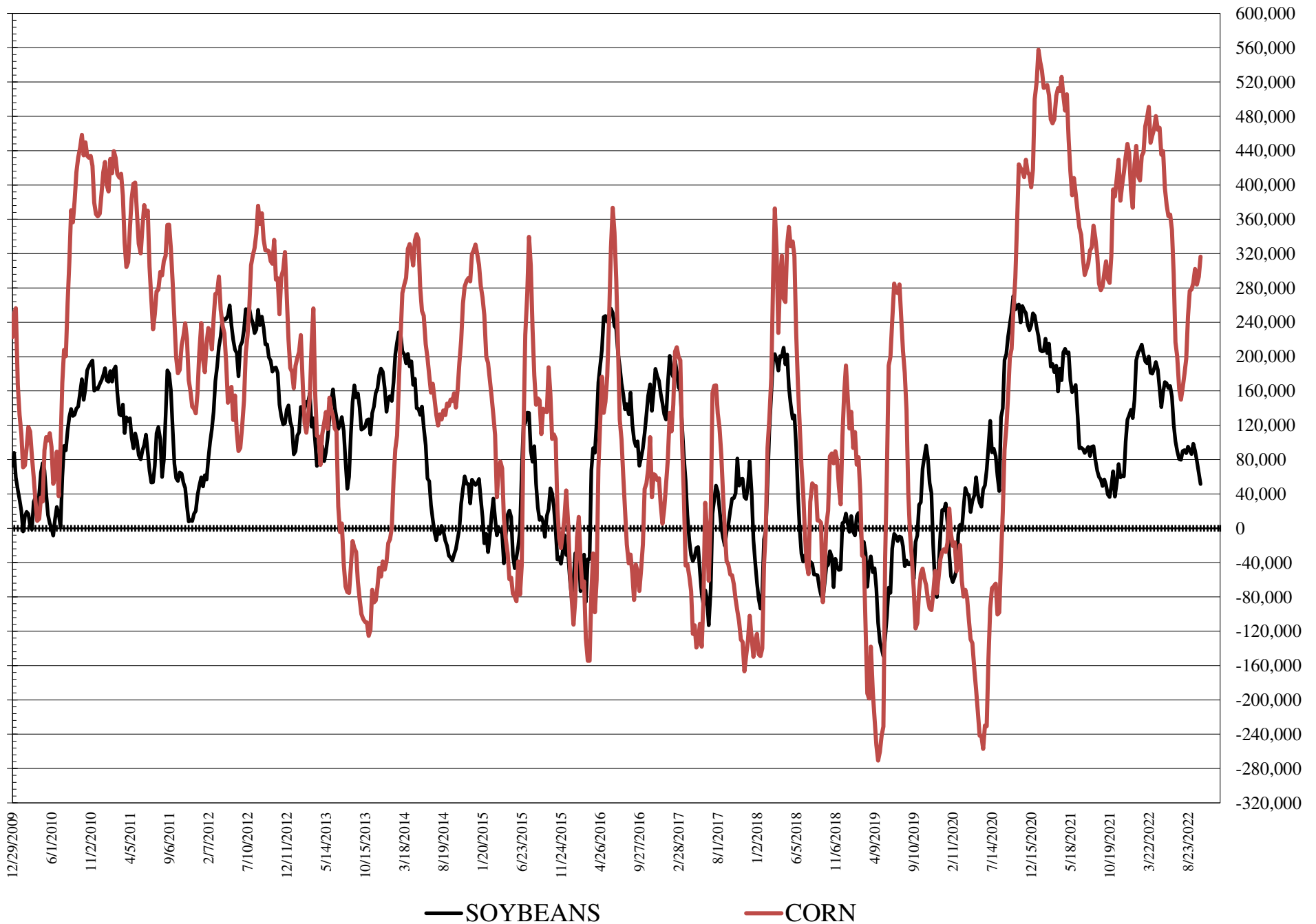
	TOTAL OPEN INTEREST				COMMERCIALS		% HELD BY TRADERS LARGE (FUNDS)		SMALL (NON-REP)		
	11-Oct	4-Oct	27-Sep	20-Sep	LONG	SHORT	LONG	SHORT	LONG	SHORT	
WHEAT											
Chicago	410,978	391,177	377,966	387,820		37%	34%	19%	20%	8%	9%
Kansas City	174,177	169,709	167,941	172,256		41%	53%	26%	12%	13%	14%
Minneapolis	59,266	58,114	57,413	57,448		59%	70%	16%	5%	17%	17%
CORN	1,886,410	1,829,430	1,787,424	1,817,528		39%	52%	21%	4%	9%	12%
OATS	4,042	3,977	3,963	3,870							
SOYBEANS	833,186	810,388	830,261	808,861		52%	54%	14%	8%	7%	10%
SOY OIL	439,056	452,583	447,185	454,576		46%	61%	20%	7%	8%	6%
SOY MEAL	403,425	401,198	422,486	445,424		41%	68%	26%	5%	13%	7%

SOURCE: CFTC & FI

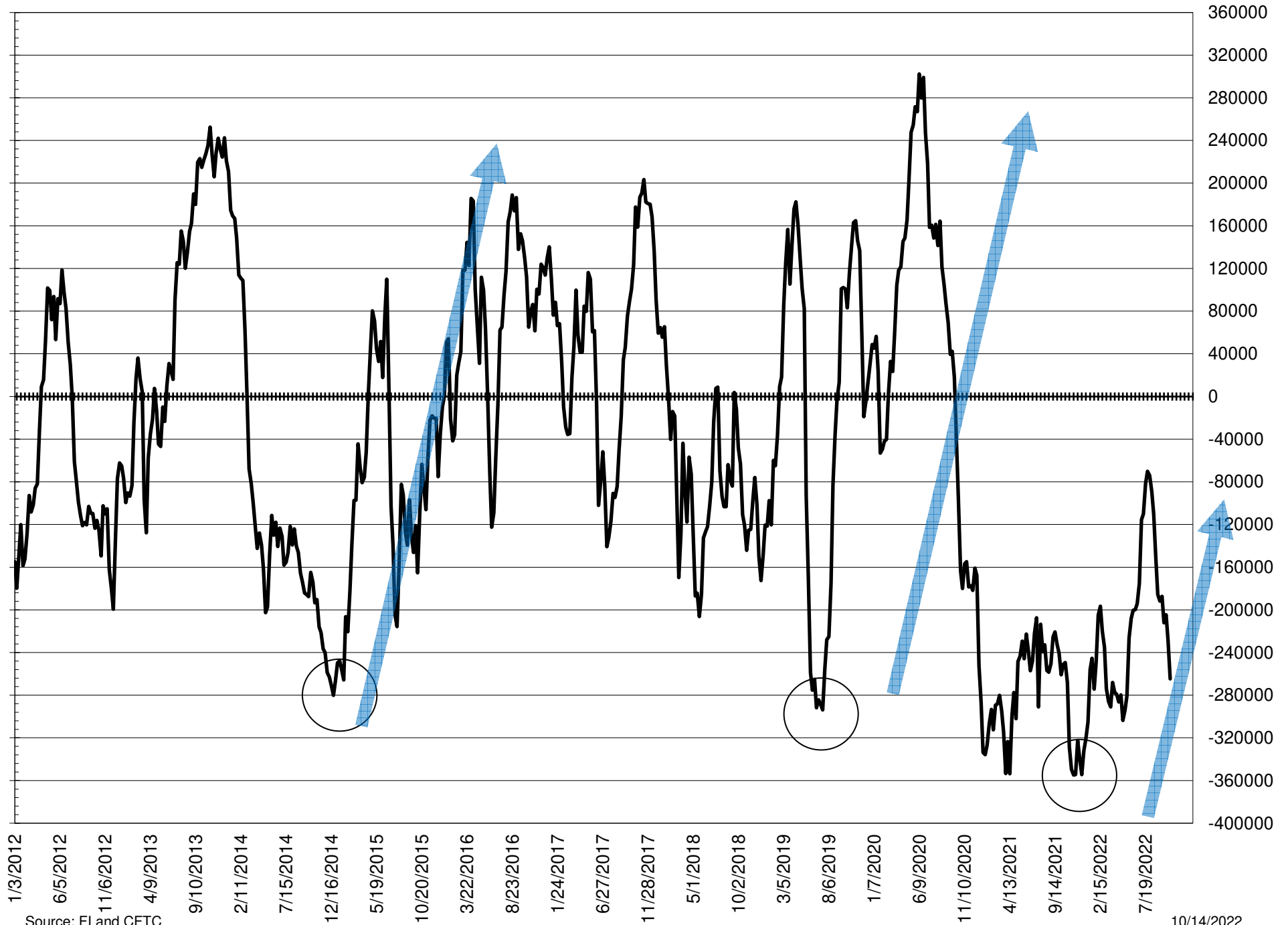
NET POSITION FUTURES AND OPTIONS OF LARGE SPECULATORS IN SOYBEAN MEAL AND SOYBEAN OIL



NET POSITION FUTURES AND OPTIONS OF LARGE SPECULATORS IN SOYBEANS AND CORN



NET POSITION FUTURES AND OPTIONS SPREAD OF LARGE SPECULATORS IN SOYBEANS MINUS CORN



Source: FI and CFTC

10/14/2022

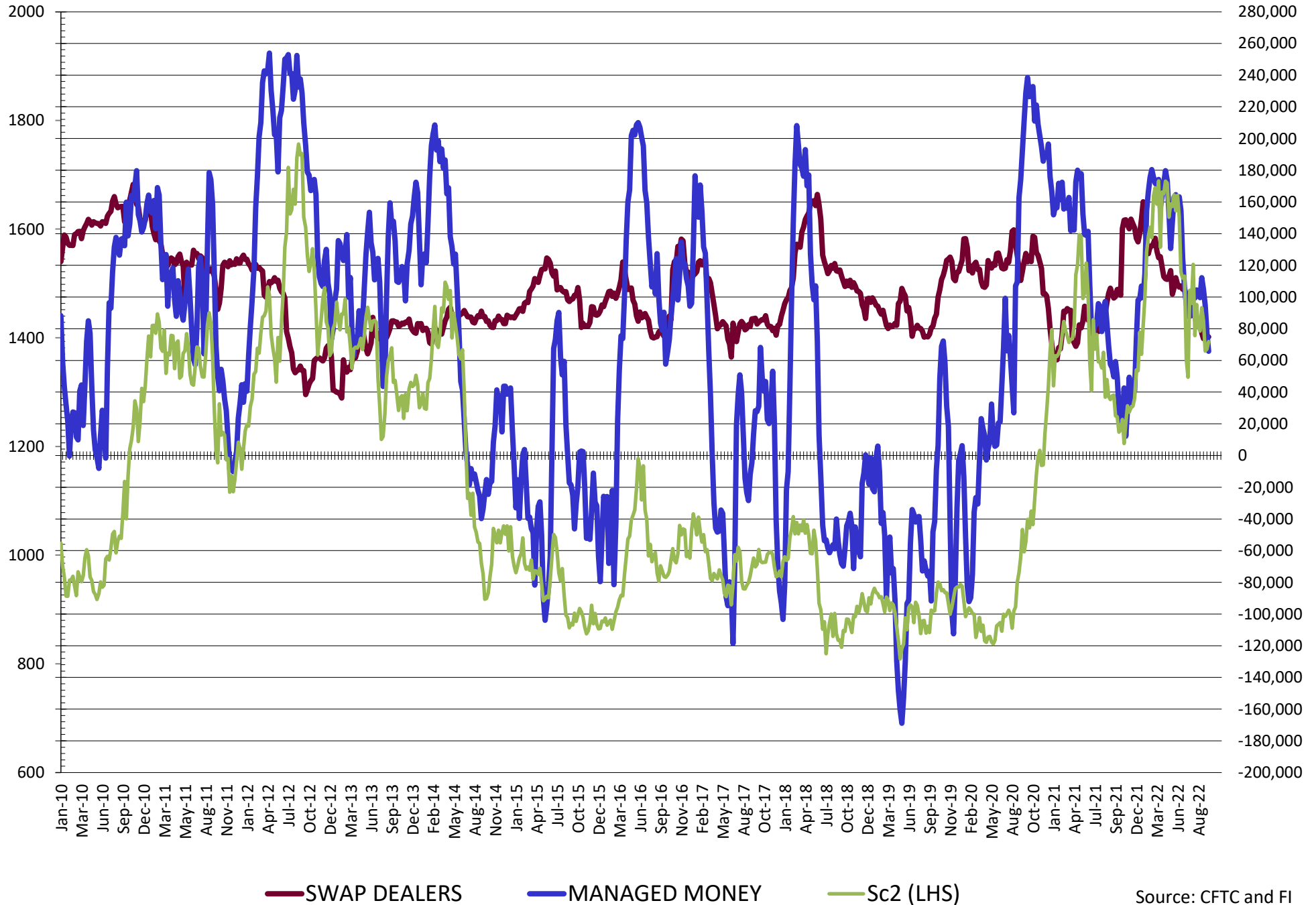
**DISAGGREGATED COMMITMENT OF TRADERS
FUTURES & OPTIONS NET POSITIONS
AS OF 10/11/2022
(IN THOUSAND CONTRACTS)**

	PRODUCER / MERCHANT / PROCESSOR / USER				(INDEX/ETF) SWAP DEALERS				(CTA/CPO/OTHER UNREGISTERED) MANAGED MONEY			
	11-Oct	4-Oct	27-Sep	20-Sep	11-Oct	4-Oct	27-Sep	20-Sep	11-Oct	4-Oct	27-Sep	20-Sep
	WHEAT											
Chicago	(48.5)	(54.8)	(56.5)	(54.3)	60.0	58.3	61.5	65.7	(19.5)	(12.2)	(14.4)	(15.7)
Kansas City	(48.8)	(45.0)	(43.9)	(44.1)	27.8	25.1	24.3	27.7	26.5	25.6	23.9	19.1
Minneapolis	(7.5)	(8.0)	(6.9)	(6.3)	0.7	0.4	0.1	1.3	4.1	3.8	4.2	2.4
All Wheat	(104.9)	(107.8)	(107.3)	(104.8)	88.5	83.8	85.9	94.7	11.1	17.2	13.7	5.7
CORN	(463.6)	(440.8)	(433.3)	(461.6)	216.1	213.5	219.9	225.9	267.4	243.7	237.9	247.9
OATS	(1.0)	(1.0)	(1.0)	(1.0)	0.1	0.3	0.2	0.3	(0.8)	(0.8)	(0.7)	(0.6)
SOYBEANS	(95.9)	(106.8)	(116.4)	(129.4)	74.8	75.1	73.7	73.7	65.7	77.5	94.8	104.7
SOY OIL	(152.0)	(151.9)	(147.0)	(155.8)	84.9	85.9	88.2	90.7	61.0	62.8	58.4	58.3
SOY MEAL	(190.8)	(200.3)	(218.8)	(232.5)	80.0	81.0	85.6	84.0	70.4	79.7	93.5	102.2

	TOTAL OPEN INTEREST				OTHER REPORTABLE				NON REPORTABLE			
	11-Oct	4-Oct	27-Sep	20-Sep	11-Oct	4-Oct	27-Sep	20-Sep	11-Oct	4-Oct	27-Sep	20-Sep
	WHEAT											
Chicago	410,978	391,177	377,966	387,820	14.5	15.9	16.2	9.3	(6.4)	(7.2)	(6.8)	(5.1)
Kansas City	174,177	169,709	167,941	172,256	(3.3)	(3.6)	(2.3)	(1.4)	(2.2)	(2.2)	(2.0)	(1.2)
Minneapolis	59,266	58,114	57,413	57,448	2.6	3.1	3.0	3.0	0.1	0.7	(0.5)	(0.4)
All Wheat	644,421	619,000	603,320	617,524	13.8	15.4	16.9	11.0	(8.5)	(8.7)	(9.2)	(6.6)
CORN	1,886,410	1,829,430	1,787,424	1,817,528	49.0	49.5	46.0	54.3	(68.8)	(65.9)	(65.9)	(65.9)
OATS	4,042	3,977	3,963	3,870	0.7	0.6	0.6	0.5	0.9	0.9	0.8	0.8
SOYBEANS	833,186	810,388	830,261	808,861	(14.1)	(13.0)	(15.7)	(14.5)	(30.5)	(32.8)	(36.4)	(34.4)
SOY OIL	439,056	452,583	447,185	454,576	(4.7)	(4.9)	(6.1)	(3.2)	10.8	8.2	6.5	9.9
SOY MEAL	403,425	401,198	422,486	445,424	16.1	17.2	14.2	18.7	24.3	22.3	25.4	27.6

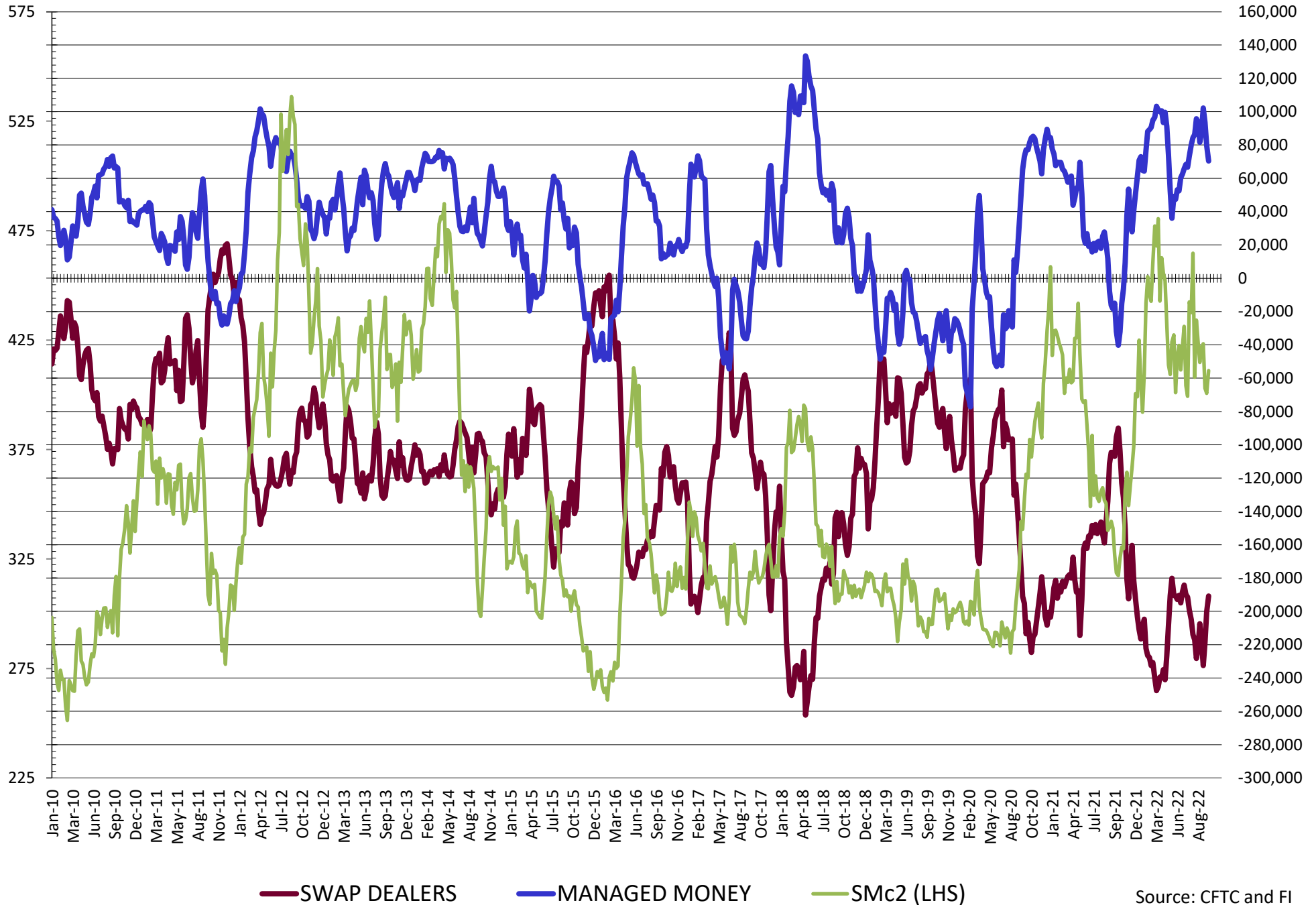
SOURCE: CFTC & FI

NET POSITION FUTURES AND OPTIONS OF SWAP AND MANAGED FUNDS IN SOYBEANS

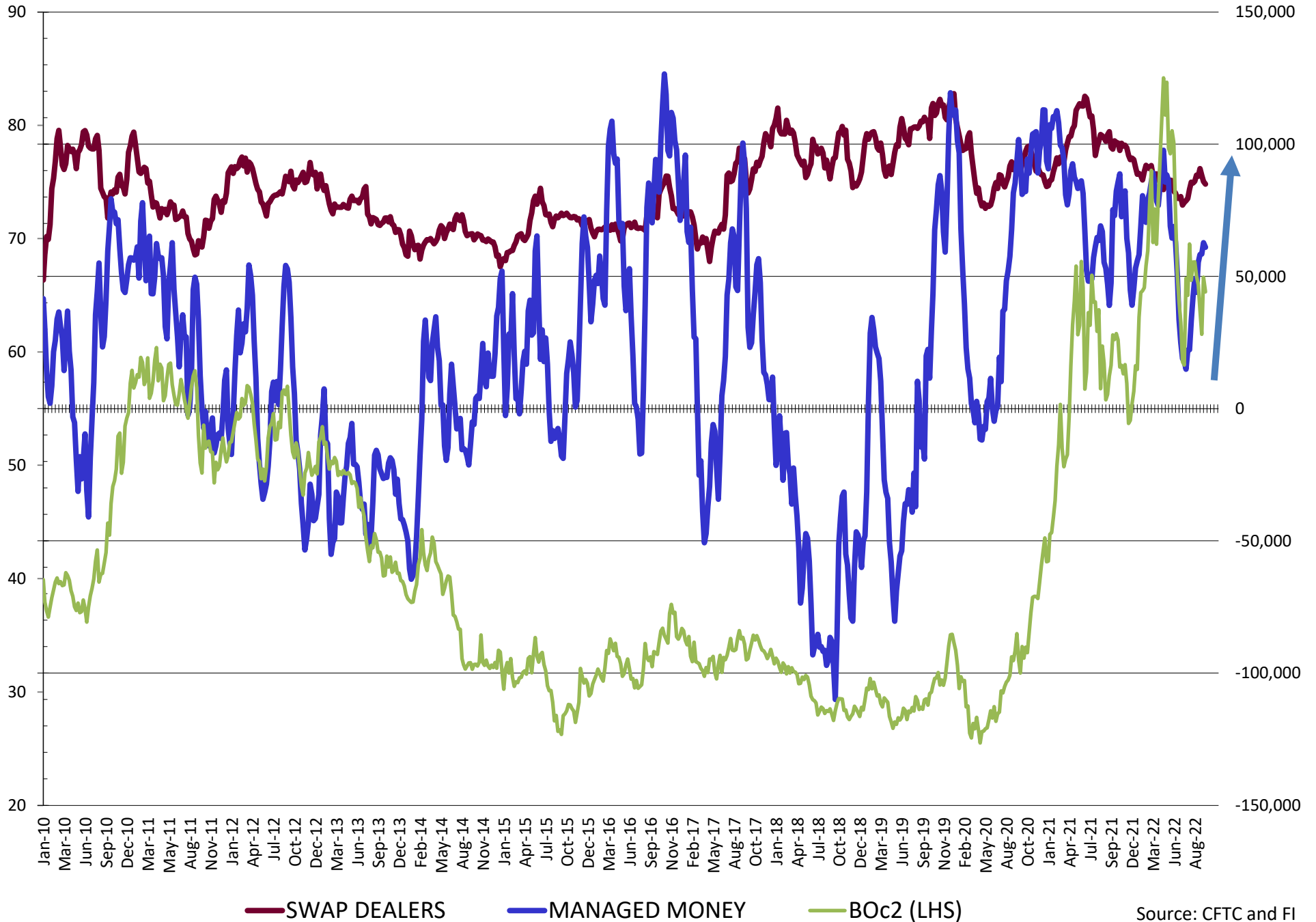


Source: CFTC and FI
10/14/2022

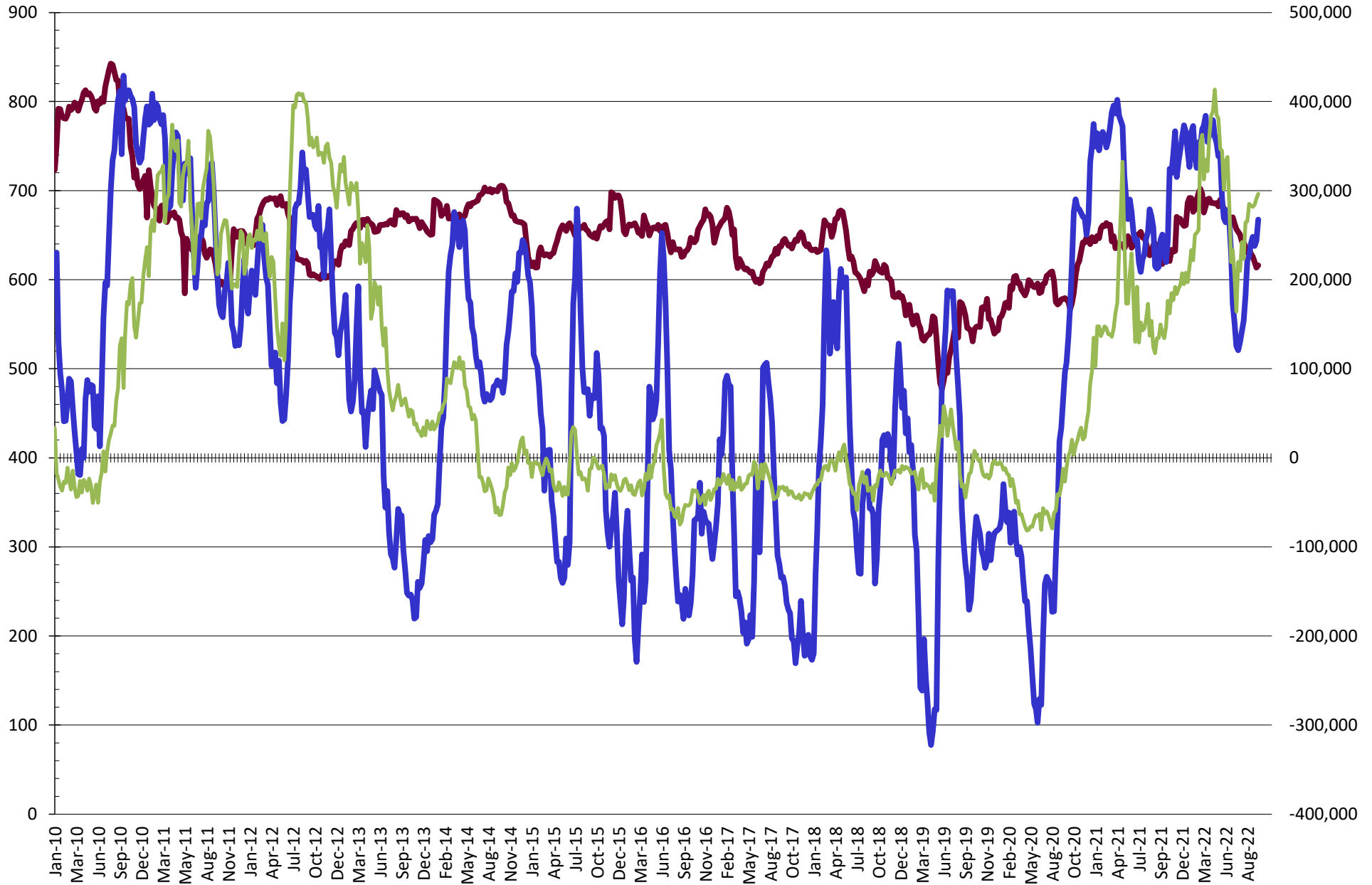
NET POSITION FUTURES AND OPTIONS OF SWAP AND MANAGED FUNDS IN SOYBEAN MEAL



NET POSITION FUTURES AND OPTIONS OF SWAP AND MANAGED FUNDS IN SOYBEAN OIL

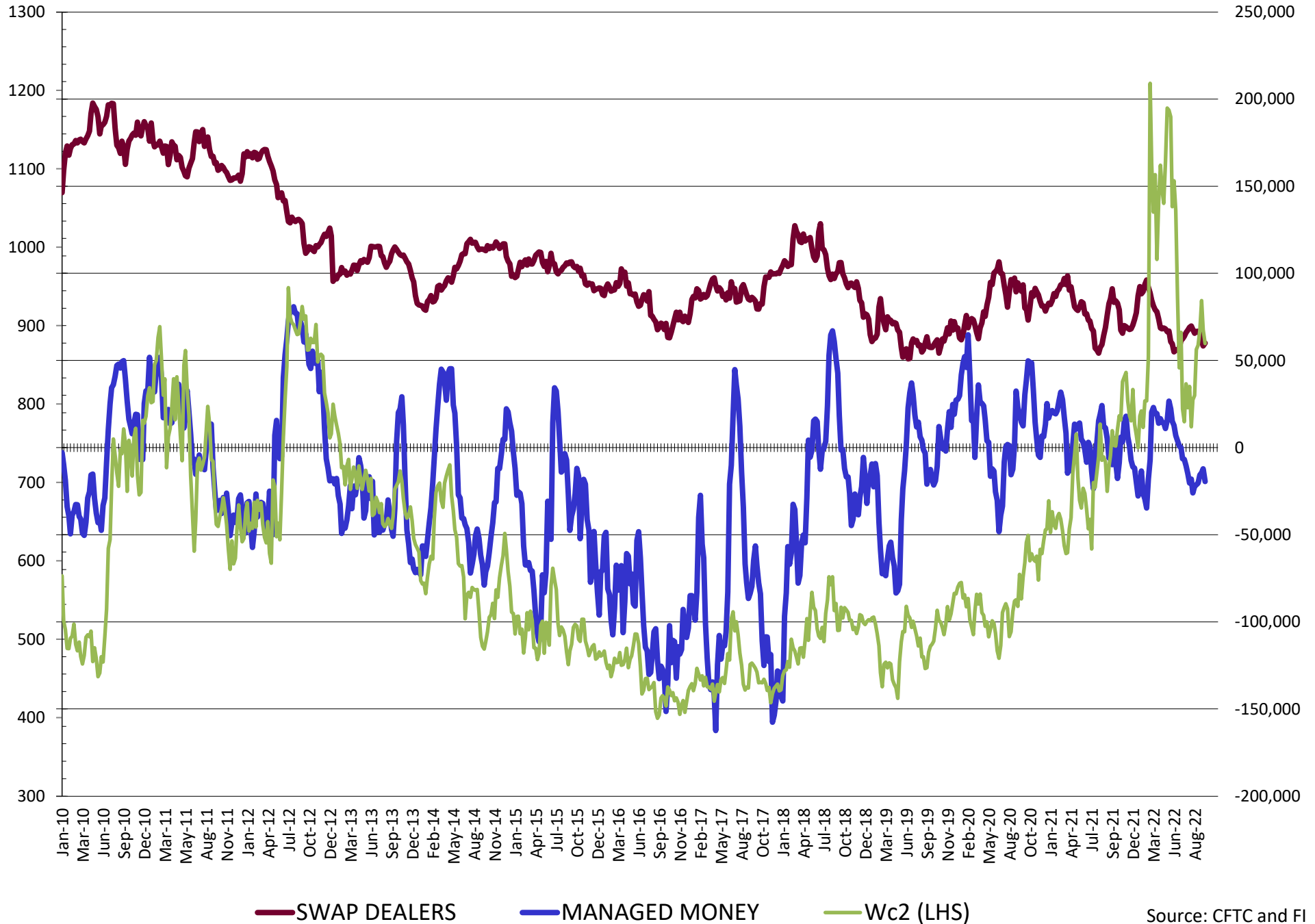


NET POSITION FUTURES AND OPTIONS OF SWAP AND MANAGED FUNDS IN CORN

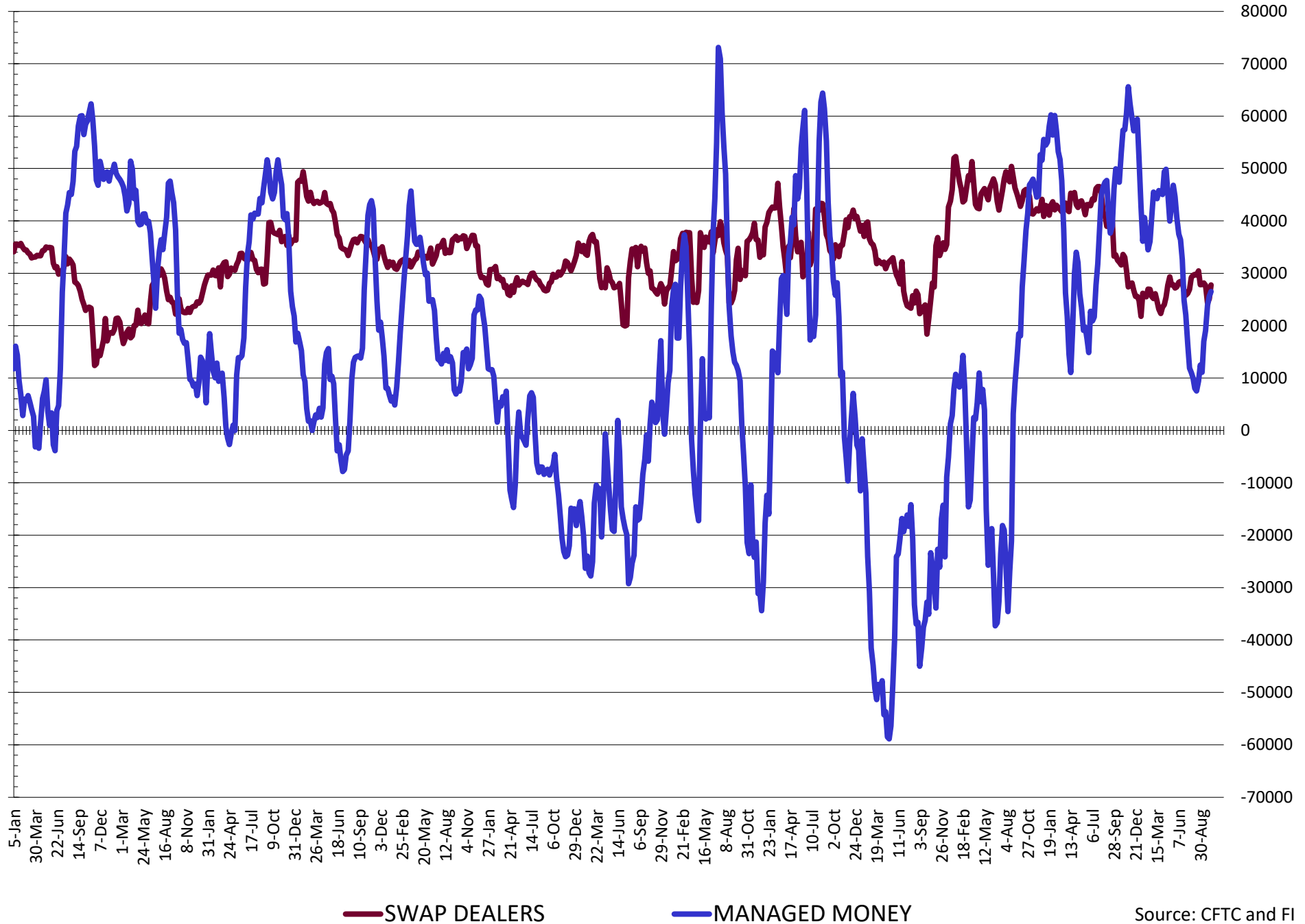


— SWAP DEALERS
 — MANAGED MONEY
 — Cc2 (LHS)

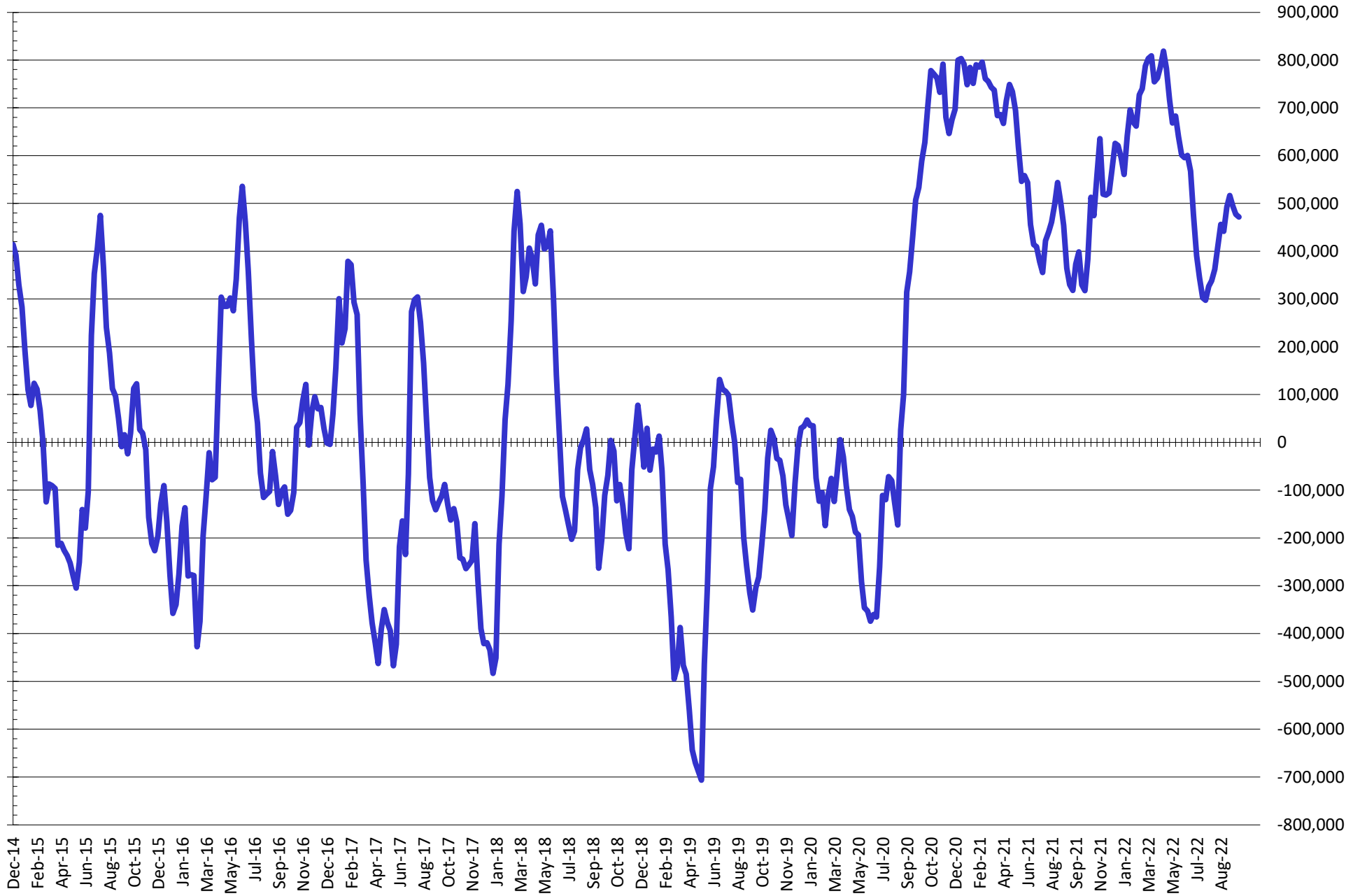
NET POSITION FUTURES AND OPTIONS OF SWAP AND MANAGED FUNDS IN CHICAGO WHEAT



NET POSITION FUTURES AND OPTIONS OF SWAP AND MANAGED FUNDS IN KANSAS WHEAT



NET POSITION FUTURES AND OPTIONS OF SWAP AND MANAGED FUNDS IN COMBINED SRW, HRW, CORN, SOYBEANS, SOYMEAL AND SOYOIL



— Net Managed Money

Source: CFTC and FI
10/14/2022

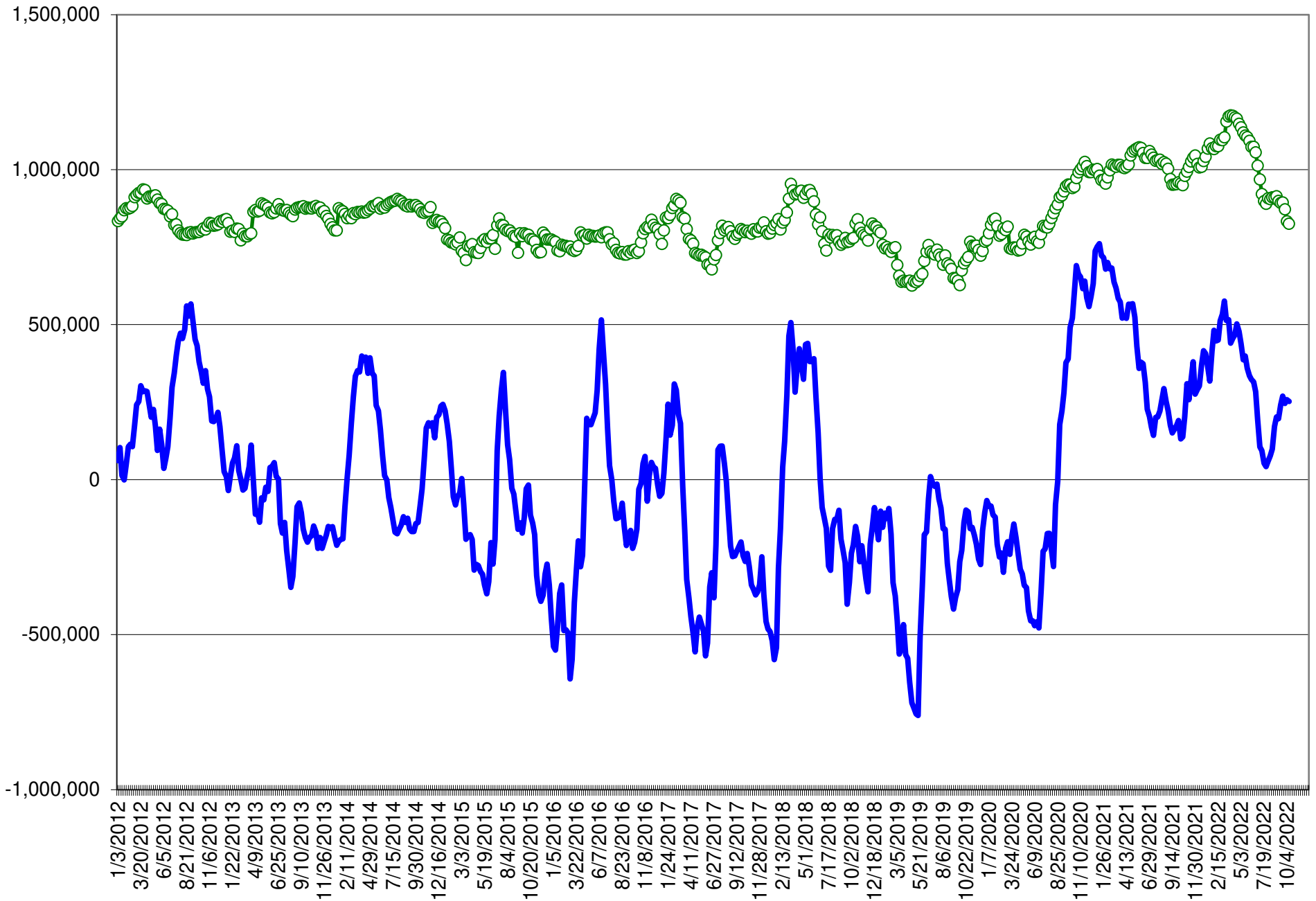
COMMITMENT OF TRADERS
FUTURES & OPTIONS NET POSITIONS (INDEX BROKEN OUT)
AS OF 10/11/2022
(IN THOUSAND CONTRACTS)

	COMMERCIAL				(FUND) NON COMMERCIAL				(SPEC) NON-REPORTABLE			
	11-Oct	4-Oct	27-Sep	20-Sep	11-Oct	4-Oct	27-Sep	20-Sep	11-Oct	4-Oct	27-Sep	20-Sep
	WHEAT											
Chicago	(58.6)	(66.0)	(67.3)	(63.4)	(43.4)	(36.8)	(41.4)	(47.5)	(6.4)	(7.2)	(6.8)	(5.1)
Kansas City	(53.7)	(52.2)	(52.7)	(50.3)	6.1	4.8	4.7	0.1	(2.2)	(2.2)	(2.0)	(1.2)
Minneapolis	-	-	-	-	-	-	-	-	-	-	-	-
All Wheat	(112.4)	(118.1)	(120.0)	(113.6)	(37.3)	(32.0)	(36.7)	(47.4)	(8.6)	(9.4)	(8.7)	(6.3)
CORN	(481.4)	(458.9)	(450.9)	(478.2)	193.9	175.2	159.6	173.3	(68.8)	(65.9)	(70.3)	(66.5)
OATS	-	-	-	-	-	-	-	-	-	-	-	-
SOYBEANS	(100.4)	(112.8)	(125.4)	(140.4)	15.7	24.5	31.9	41.7	(30.5)	(32.8)	(36.4)	(34.4)
SOY OIL	(132.5)	(133.6)	(128.7)	(135.7)	26.3	28.7	20.1	21.1	10.8	8.2	6.5	9.9
SOY MEAL	(178.1)	(189.8)	(209.0)	(225.4)	53.3	61.3	70.8	80.2	24.3	22.3	25.4	27.6

	TOTAL OPEN INTEREST				(INDEX) COMMERCIAL INDEX TRADERS				(INDEX) % NET OF TOTAL OPEN INTEREST			
	11-Oct	4-Oct	27-Sep	20-Sep	11-Oct	4-Oct	27-Sep	20-Sep	11-Oct	4-Oct	27-Sep	20-Sep
	WHEAT											
Chicago	410,978	391,177	377,966	387,820	108.5	110.0	115.5	115.9	26.4%	28.1%	30.5%	29.9%
Kansas City	174,177	169,709	167,941	172,256	49.8	49.6	50.0	51.4	28.6%	29.2%	29.8%	29.8%
Minneapolis	-	-	-	-	-	-	-	-	-	-	-	-
All Wheat	585,155	560,886	545,907	560,076	158.3	159.6	165.4	167.3	27.1%	28.5%	30.3%	29.9%
CORN	1,886,410	1,829,430	1,787,424	1,817,528	356.3	349.6	361.7	371.3	18.9%	19.1%	20.2%	20.4%
OATS	-	-	-	-	-	-	-	-	-	-	-	-
SOYBEANS	833,186	810,388	830,261	808,861	115.2	121.0	129.9	133.1	13.8%	14.9%	15.6%	16.5%
SOY OIL	439,056	452,583	447,185	454,576	95.4	96.8	102.0	104.6	21.7%	21.4%	22.8%	23.0%
SOY MEAL	403,425	401,198	422,486	445,424	100.5	106.2	112.7	117.6	24.9%	26.5%	26.7%	26.4%

SOURCE: CFTC & FI

NET POSITION FUTURES AND OPTIONS OF SPECULATORS AND INDEX FUNDS IN COMBINED SRW, HRW, CORN, SOYBEANS, SOYMEAL AND SOYOIL



Source: CFTC and FI

○ Net Index

— Net Speculator

Traditional Daily Estimate of Funds 10/11/22

	(Neg)-"Short"	Pos-"Long"			
Actual less Est.	14.1	(12.0)	7.4	(8.3)	(3.1)
	Corn	Bean	Chi. Wheat	Meal	Oil
Actual	325.1	55.8	(2.0)	96.6	57.9
12-Oct	(1.0)	8.0	(6.0)	4.0	0.0
13-Oct	3.0	1.0	5.0	0.0	3.0
14-Oct	(6.0)	(3.0)	(12.0)	0.0	(5.0)
17-Oct					
18-Oct					
FI Est. of Futures Only 10/11/22	321.1	61.8	(15.0)	100.6	55.9
FI Est. Futures & Options	312.3	57.6	(18.0)	90.5	54.3
Futures only record long "Traditional Funds"	547.7 1/26/2021	280.9 11/10/2020	86.5 8/7/2018	167.5 5/1/2018	160.2 11/1/2016
Futures only record short	(235.0) 6/9/2020	(118.3) 4/30/2019	(130.0) 4/25/2017	(49.5) 3/1/2016	(69.8) 9/18/2018
Futures and options record net long	557.6 1/12/2021	270.9 10/6/2020	64.8 8/7/2012	132.1 5/1/2018	159.2 1/1/2016
Futures and options record net short	(270.6) 4/26/2019	(132.0) 4/30/2019	(143.3) 4/25/2017	(64.1) 3/1/2016	(77.8) 9/18/2018

Managed Money Daily Estimate of Funds 10/11/22

	Corn	Bean	Chi. Wheat	Meal	Oil
Latest CFTC Fut. Only	254.6	65.6	(19.9)	70.3	61.1
Latest CFTC F&O	267.4	65.7	(19.5)	70.4	61.0
FI Est. Managed Fut. Only	251	72	(33)	74	59
FI Est. Managed Money F&O	263	72	(33)	74	59

Index Funds Latest Positions (as of last Tuesday)

Index Futures & Options	356.3	115.2	108.5	NA	95.4
Change From Previous Week	6.7	(5.8)	(1.5)	NA	(1.4)

Source: Reuters, CFTC & FI (FI est. are noted with latest date)

Disclaimer

TO CLIENTS/PROSPECTS OF FUTURES INTERNATIONAL, SEE RISK DISCLOSURE BELOW:

THIS COMMUNICATION IS CONVEYED AS A SOLICITATION FOR ENTERING INTO A DERIVATIVES TRANSACTION.

Any trading recommendations and market or other information to Customer by Futures International (FI), although based upon information obtained from sources believed by FI to be reliable may not be accurate and may be changed without notice to customer. FI makes no guarantee as to the accuracy or completeness of any of the information or recommendations furnished to Customer. Customer understands that FI, its managers, employees and/or affiliates may have a position in commodity futures, options or other derivatives which may not be consistent with the recommendations furnished by FI to Customer.

The risk of trading futures and options and other derivatives involves a substantial risk of loss and is not suitable for all persons. In purchasing an option, the risk is limited to the premium paid, and all commissions and fees involved with the trade. When an option is shorted or written, the writer of the option has unlimited risk with respect to the option written. The use of options strategies such as a straddles and strangles involve multiple option positions and may substantially increase the amount of commissions and fees paid to execute the strategy. Option prices do not necessarily move in tandem with cash or futures prices. Each person must consider whether a particular trade, combination of trades or strategy is suitable for that person's financial means and objectives.

This material may include discussions of seasonal patterns, however, futures prices have already factored in the seasonal aspects of supply and demand, and seasonal patterns are no indication of future market trends. Finally, past performance is not indicative of future results.

This communication may contain links to third party websites which are not under the control of FI and FI is not responsible for their content. Products and services are offered only in jurisdictions where solicitation and sale are lawful, and in accordance with applicable laws and regulations in each such jurisdiction.