

# CFTC COMMITMENT OF TRADERS REPORT

As of 10/25/2022

## TRADITIONAL FUNDS net position changes

Wed to Tue, in 000 contracts

	Corn	Bean	Meal	Oil	Chi. Wheat	KC Wheat	Min Wheat
Futures Only	17.4	2.7	17.0	16.9	(9.4)	(3.1)	(0.3)
Futures & Options Combined	14.2	16.1	19.5	17.4	(10.1)	(3.4)	(0.4)

## TRADITIONAL COMMERCIAL net position changes

	Corn	Bean	Meal	Oil	Chi. Wheat	KC Wheat	Min Wheat
Futures Only	(24.4)	(4.7)	(19.1)	(14.5)	9.4	2.5	0.6
Futures & Options Combined	(22.3)	(20.7)	(21.8)	(14.8)	10.1	2.9	0.7

## MANAGED MONEY net position changes

	Corn	Bean	Meal	Oil	Chi. Wheat	KC Wheat	Min Wheat
Futures Only	9.5	8.8	16.0	20.3	(13.8)	(1.7)	(0.3)
Futures & Options Combined	10.1	8.5	15.2	20.2	(14.0)	(1.6)	(0.3)

## SWAP DEALERS net position changes

	Corn	Bean	Meal	Oil	Chi. Wheat	KC Wheat	Min Wheat
Futures Only	(1.0)	3.6	1.4	(0.7)	(0.1)	0.6	0.2
Futures & Options Combined	(1.2)	1.9	0.9	(0.4)	0.5	0.4	0.2

## PRODUCERS/END USERS net position changes

	Corn	Bean	Meal	Oil	Chi. Wheat	KC Wheat	Min Wheat
Futures Only	(23.4)	(8.3)	(20.5)	(13.8)	9.4	1.9	0.4
Futures & Options Combined	(21.1)	(22.6)	(22.7)	(14.4)	9.6	2.5	0.5

## INDEX net position changes

	Corn	Bean	Meal	Oil	Chi. Wheat	KC Wheat	Min Wheat
Futures & Options Combined	5.4	2.4	4.5	4.1	(1.6)	(1.3)	NA

## SUPPLEMENTAL NON-COMMERCIAL net position changes

	Corn	Bean	Meal	Oil	Chi. Wheat	KC Wheat	Min Wheat
Futures & Options Combined	8.5	16.3	15.6	13.6	(9.1)	(2.3)	NA

## OPEN INTEREST net position changes

Wed to Tue, in 000 contracts

	Corn	Bean	Meal	Oil	Chi. Wheat	KC Wheat	Min Wheat
Futures Only	26.8	(62.8)	16.0	19.9	14.7	0.8	(0.3)
Futures & Options Combined	6.3	(126.1)	12.2	23.8	7.6	0.1	(0.3)

Source: CFTC and FI

Wed to Tue, in 000 contracts

**COMMITMENT OF TRADERS  
FUTURES ONLY NET POSITIONS  
AS OF 10/25/2022  
(IN THOUSAND CONTRACTS)**

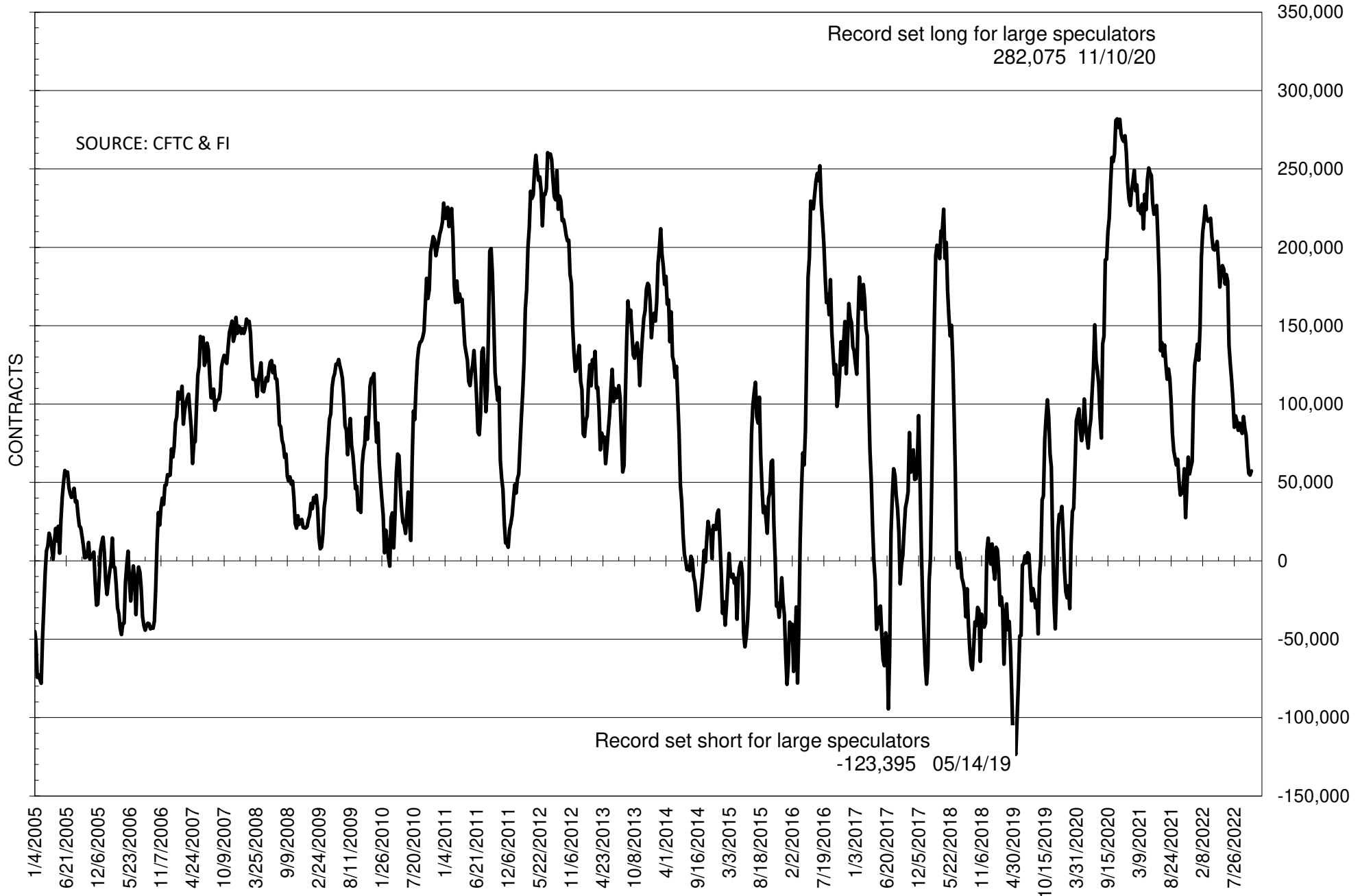
	COMMERCIAL				(FUND) NON COMMERCIAL				(SPEC) NON-REPORTABLE			
	25-Oct	18-Oct	11-Oct	4-Oct	25-Oct	18-Oct	11-Oct	4-Oct	25-Oct	18-Oct	11-Oct	4-Oct
	<b>WHEAT</b>											
Chicago	19.9	10.5	8.7	1.9	-12.9	-3.5	-2.0	5.6	-7.0	-7.0	-6.7	-7.5
Kansas City	-20.3	-22.7	-20.0	-18.9	21.6	24.7	22.8	21.8	-1.4	-2.0	-2.8	-2.9
Minneapolis	-4.5	-5.1	-6.7	-7.5	6.0	6.3	6.7	6.9	-1.6	-1.2	0.0	0.6
All Wheat	-4.8	-17.3	-18.0	-24.6	14.8	27.5	27.5	34.3	-9.9	-10.2	-9.5	-9.7
<b>CORN</b>	-273.6	-249.3	-258.2	-240.0	329.8	312.4	325.1	305.0	-56.1	-63.2	-66.9	-65.0
<b>OATS</b>	-0.3	-0.8	-0.9	-0.8	-0.5	0.1	0.0	0.0	0.8	0.8	0.9	0.9
<b>SOYBEANS</b>	-35.3	-30.6	-30.6	-40.1	57.4	54.7	55.8	66.8	-22.1	-24.1	-25.2	-26.7
<b>SOY OIL</b>	-106.0	-91.5	-68.2	-67.9	93.2	76.3	57.9	60.0	12.8	15.2	10.3	7.8
<b>SOY MEAL</b>	-141.2	-122.1	-118.4	-126.0	116.1	99.1	96.6	105.9	25.1	23.0	21.8	20.0

Oats positions thin to be reported

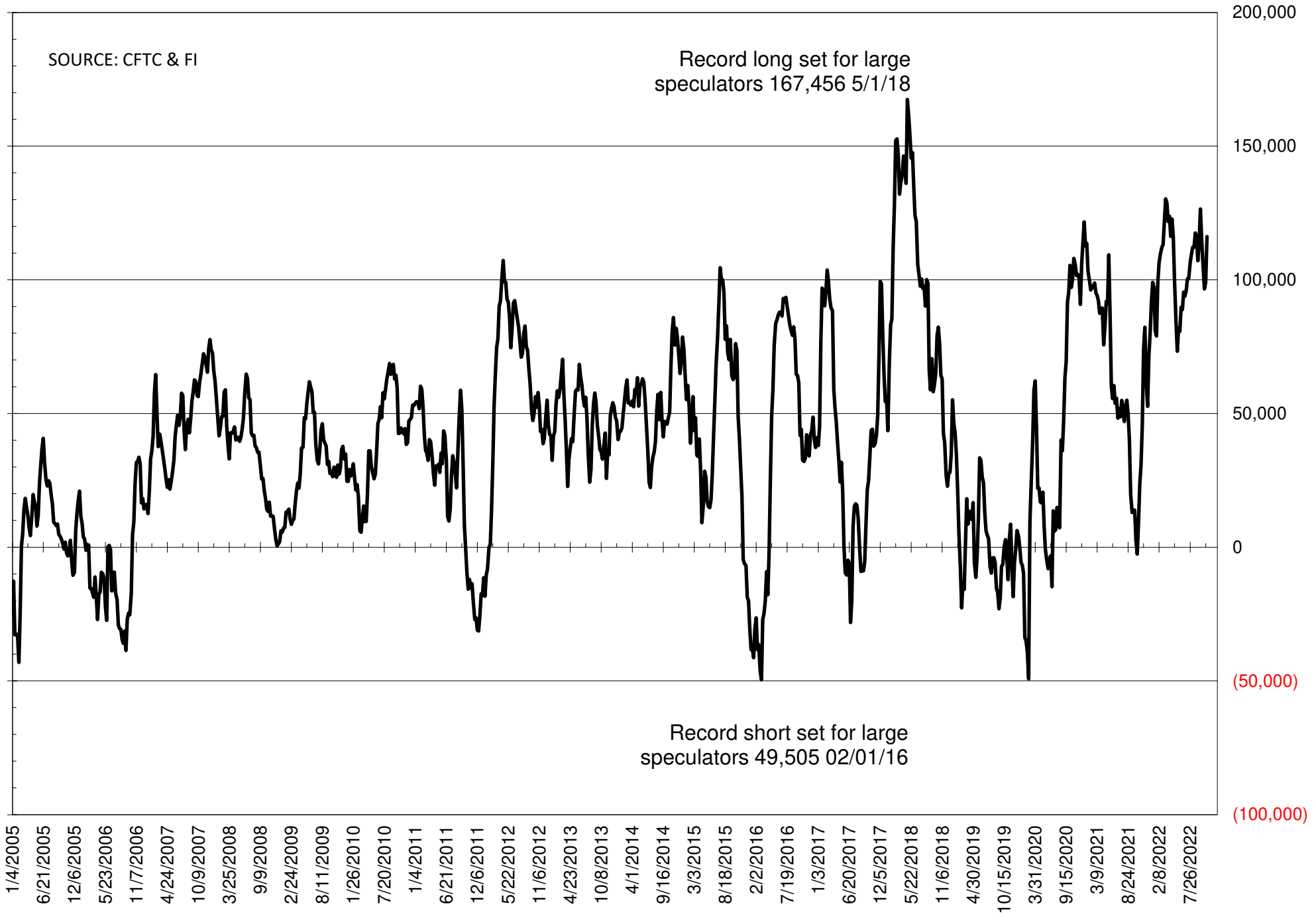
	TOTAL OPEN INTEREST				NEARBY FUTURES PRICE					25-Oct-22 LAST REPORTED % HELD BY TRADERS			
	25-Oct	18-Oct	11-Oct	4-Oct	X/Z Latest	X/Z 25-Oct	X/Z 18-Oct	V/X/Z 11-Oct	V/X/Z 4-Oct	LARGE FUND		SMALL	
										LONG	SHORT	LONG	SHORT
<b>WHEAT</b>													
Chicago	324137	309429	307901	291614	829.25	834.75	849.50	901.00	903.00	0%	31%	0%	11%
Kansas City	158382	157624	156583	153441	925.00	934.50	944.50	990.75	988.75	0%	13%	0%	13%
Minneapolis	55765	56053	56767	55640	946.25	952.25	956.00	987.00	976.75	0%	6%	0%	20%
<b>CORN</b>	1445842	1419087	1408939	1365622	680.75	686.25	681.00	693.00	683.00	0%	9%	0%	13%
<b>OATS</b>	4421	4042	3914	3848	366.50	357.50	387.25	392.25	403.50	0%	28%	0%	31%
<b>SOYBEANS</b>	651685	714532	694960	677178	1387.75	1382.00	1372.00	1376.25	1383.50	19%	11%	8%	11%
<b>SOY OIL</b>	426276	406354	391726	406640	71.79	72.28	68.74	65.47	65.02	0%	7%	0%	6%
<b>SOY MEAL</b>	388147	372161	360308	359963	425.40	415.60	401.80	406.00	401.50	0%	4%	0%	6%

SOURCE: CFTC & FI

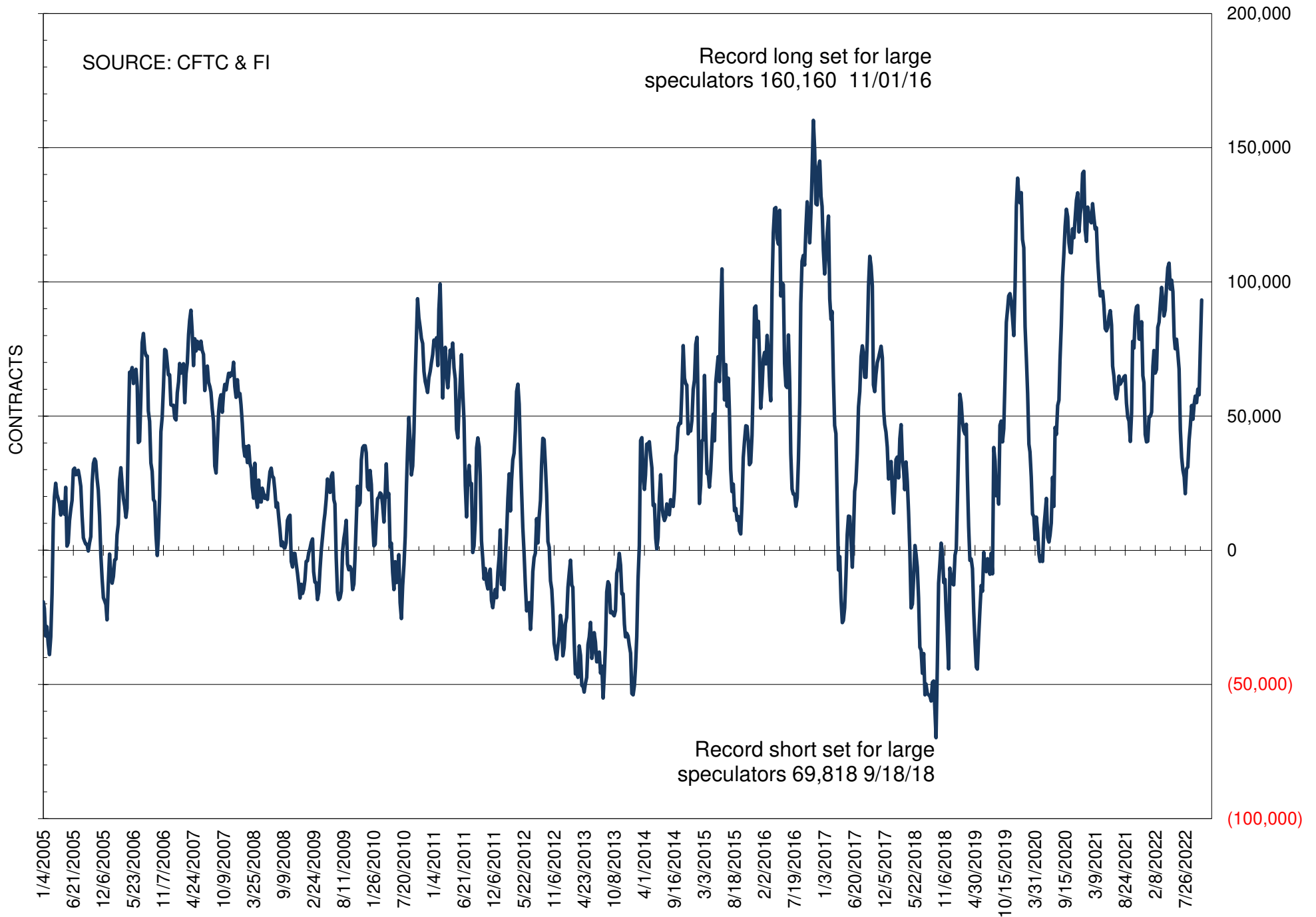
# NET POSITION OF FUTURES ONLY LARGE SPECS IN SOYBEANS



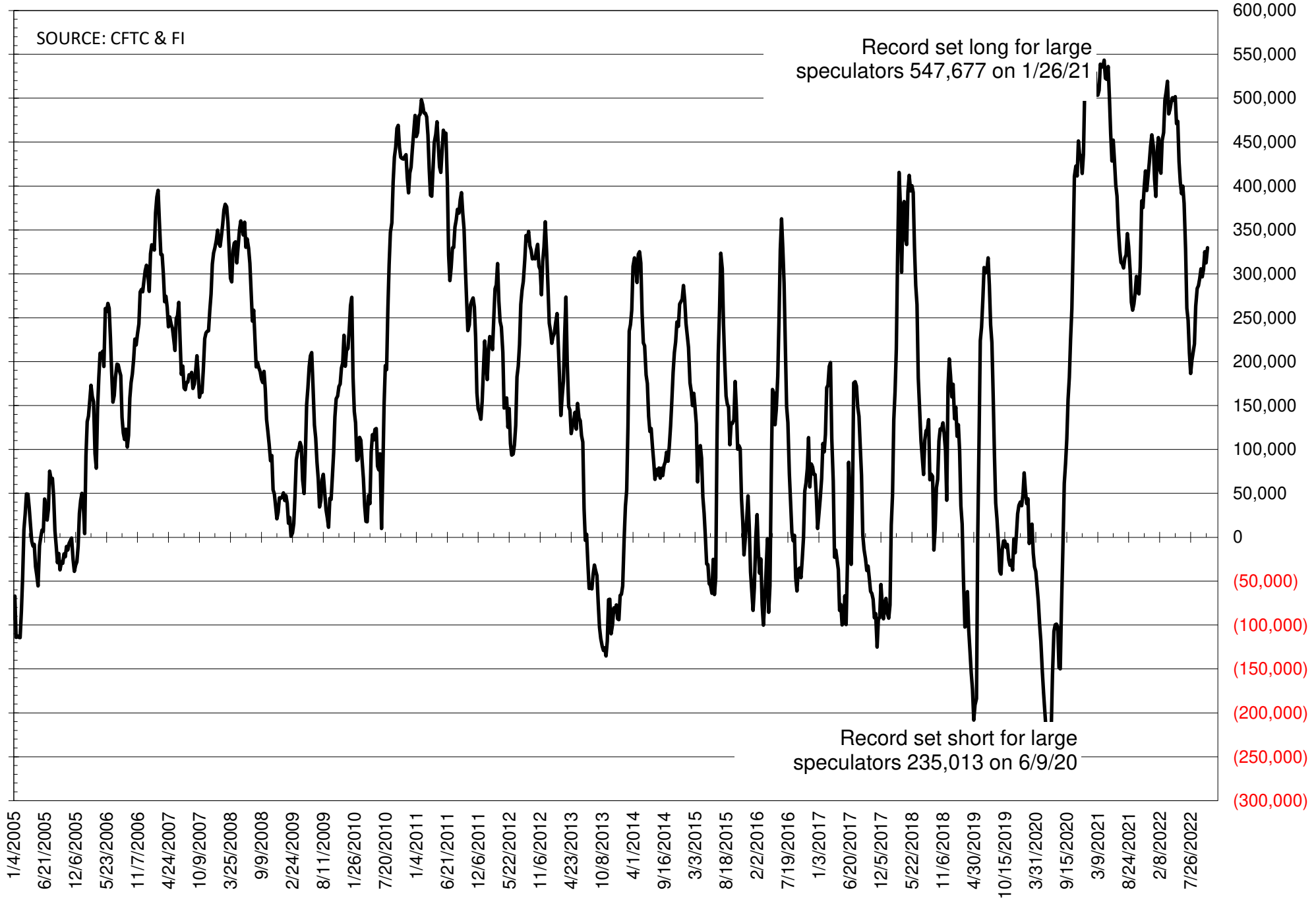
# NET POSITION OF FUTURES ONLY LARGE SPECS IN SOYMEAL



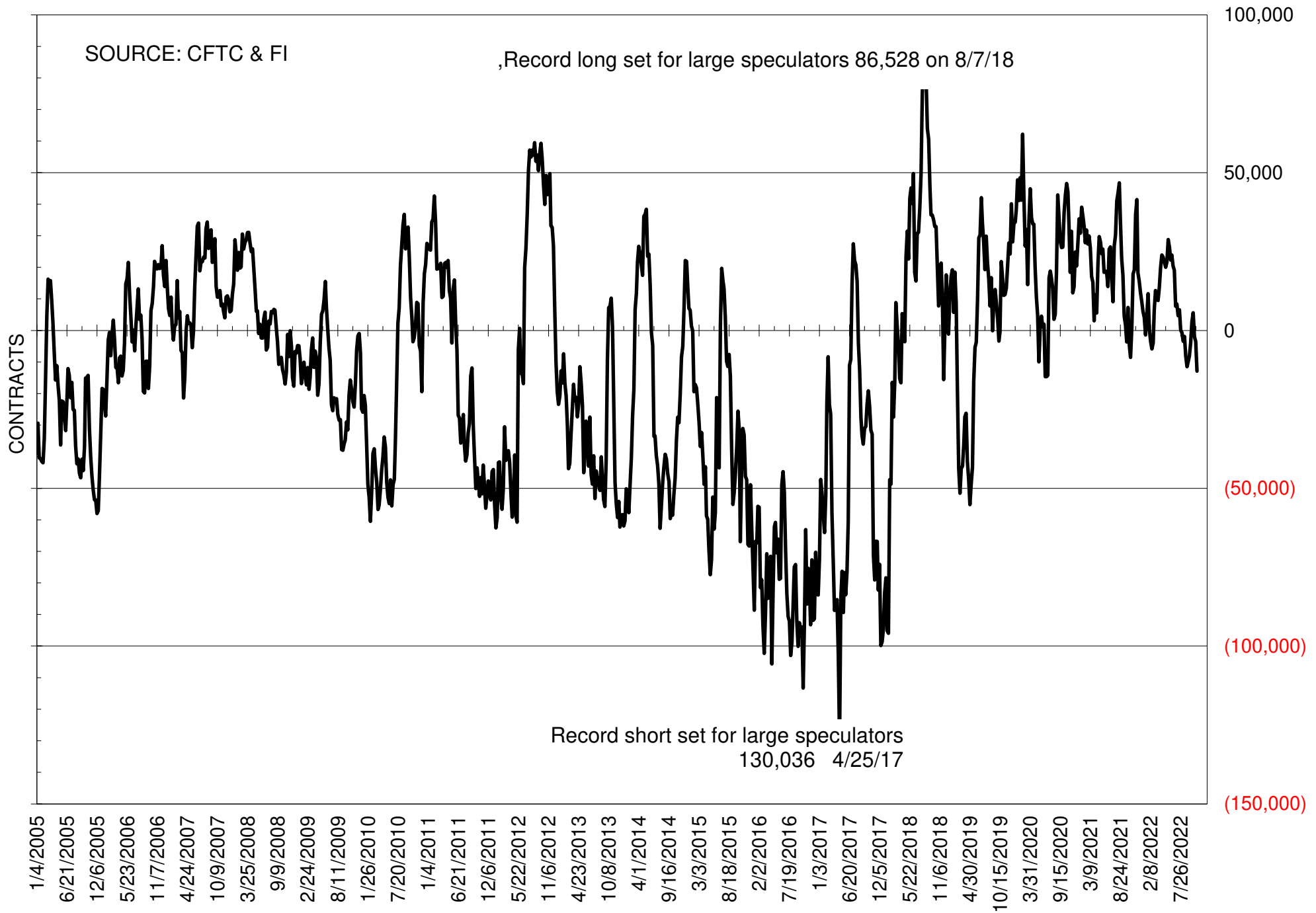
# NET POSITION OF FUTURES ONLY LARGE SPECS IN SOYOIL



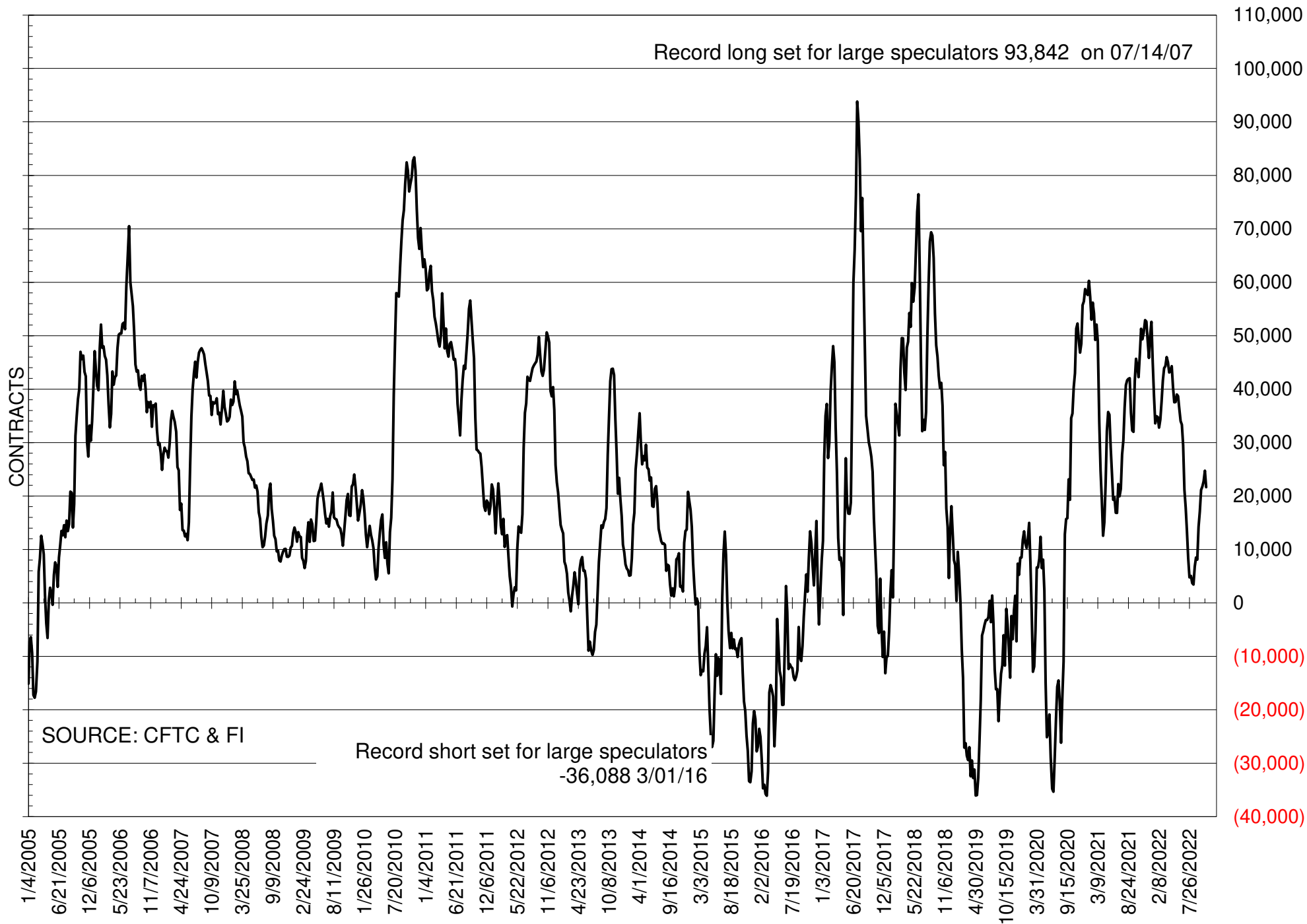
# NET POSITION OF LARGE SPECULATORS IN CORN



# NET POSITION OF FUTURES ONLY LARGE SPECS IN CHICAGO WHEAT

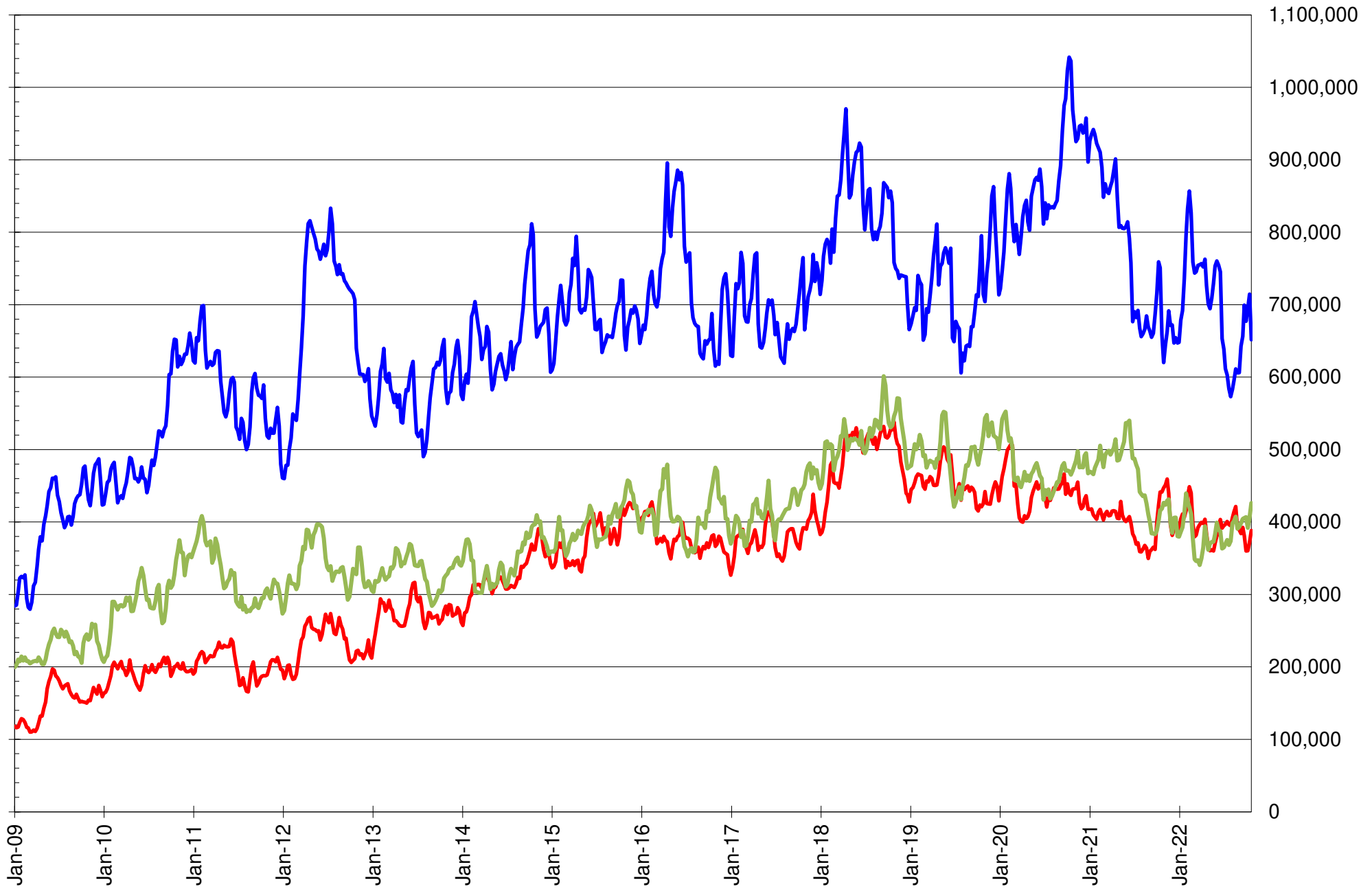


# NET POSITION OF LARGE SPECULATORS IN KANSAS CITY WHEAT





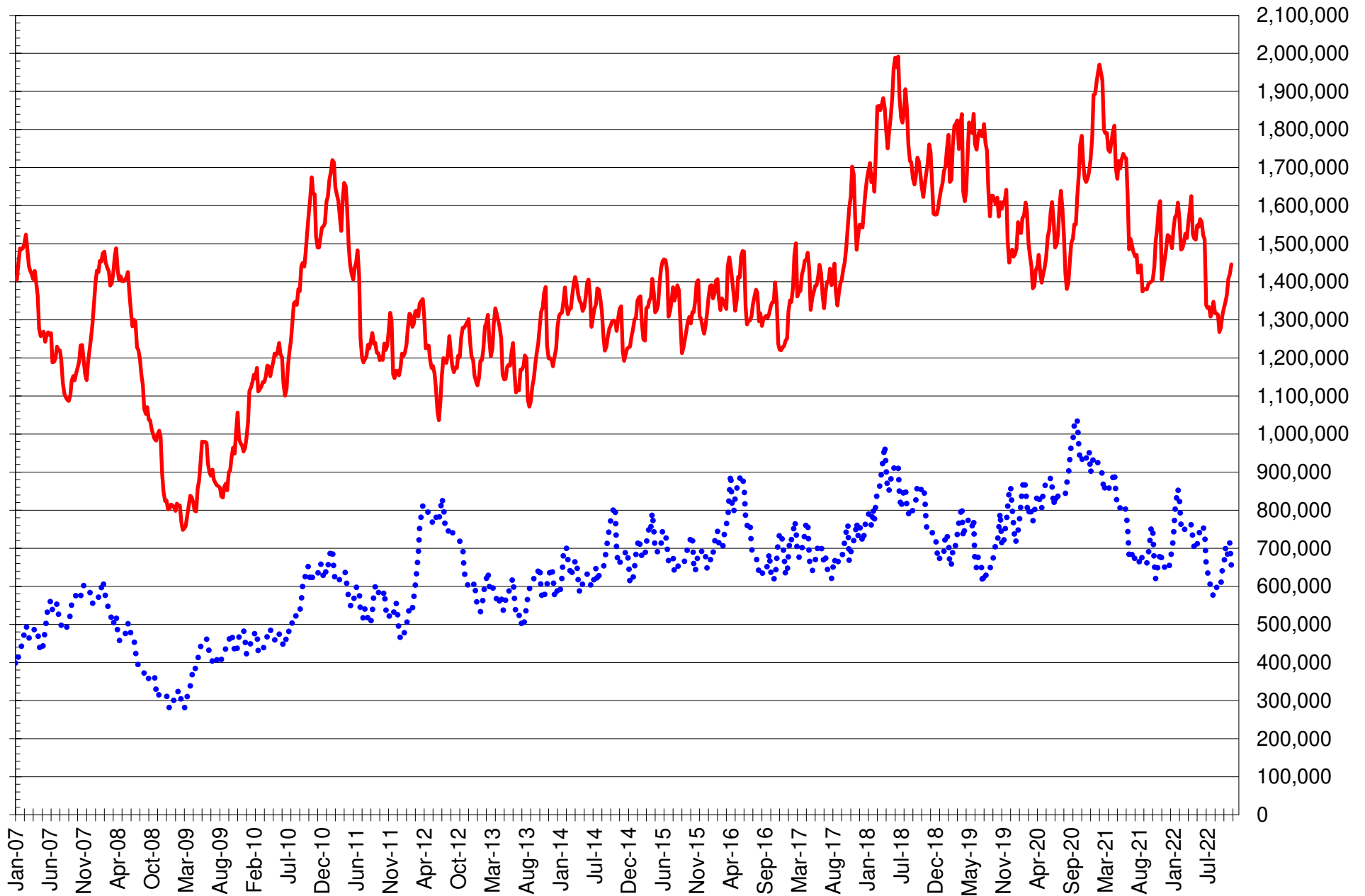
# TOTAL OPEN INTEREST IN SOYBEANS, MEAL AND OIL, FUTURES ONLY



SOURCE: CFTC & FI

— SOYBEANS — SOYBEAN MEAL — SOYBEAN OIL

# TOTAL OPEN INTEREST IN CORN AND SOYBEANS, FUTURES ONLY



SOURCE: CFTC & FI

— CORN

•••• SOYBEANS

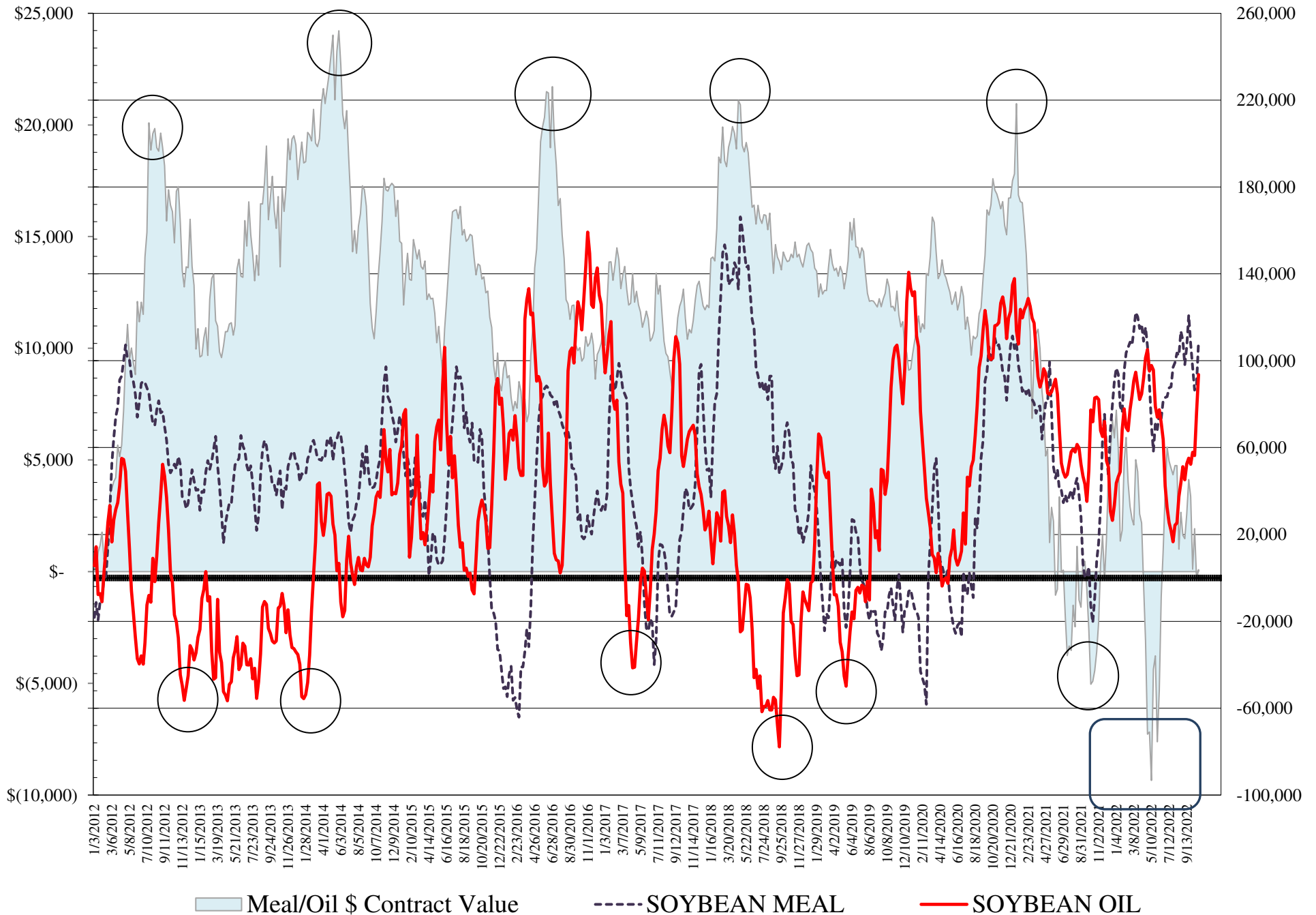
**COMMITMENT OF TRADERS  
FUTURES & OPTIONS NET POSITIONS  
AS OF 10/25/2022  
(IN THOUSAND CONTRACTS)**

	<b>COMMERCIAL</b>				<b>(FUND) NON COMMERCIAL</b>				<b>(SPEC) NON-REPORTABLE</b>			
	<b>25-Oct</b>	<b>18-Oct</b>	<b>11-Oct</b>	<b>4-Oct</b>	<b>25-Oct</b>	<b>18-Oct</b>	<b>11-Oct</b>	<b>4-Oct</b>	<b>25-Oct</b>	<b>18-Oct</b>	<b>11-Oct</b>	<b>4-Oct</b>
<b>WHEAT</b>												
Chicago	23.4	13.3	11.5	3.5	-17.2	-7.0	-5.0	3.7	-6.3	-6.3	-6.4	-7.2
Kansas City	-20.6	-23.5	-21.0	-19.8	21.5	24.9	23.2	22.0	-0.8	-1.4	-2.2	-2.2
Minneapolis	-4.4	-5.1	-6.8	-7.6	5.9	6.2	6.7	6.9	-1.5	-1.2	0.1	0.7
All Wheat	-1.6	-15.3	-16.4	-23.9	10.2	24.1	24.9	32.6	-8.6	-8.8	-8.5	-8.7
<b>CORN</b>	-257.7	-235.5	-247.6	-227.3	312.7	298.5	316.4	293.2	-55.0	-63.1	-68.8	-65.9
<b>OATS</b>	-0.2	-0.8	-0.8	-0.7	-0.6	0.0	-0.1	-0.1	0.8	0.8	0.9	0.9
<b>SOYBEANS</b>	-39.4	-18.7	-21.1	-31.7	62.8	46.7	51.6	64.4	-23.4	-28.0	-30.5	-32.8
<b>SOY OIL</b>	-106.4	-91.6	-67.1	-66.0	93.5	76.2	56.3	57.8	12.8	15.4	10.8	8.2
<b>SOY MEAL</b>	-136.2	-114.4	-110.8	-119.3	108.7	89.2	86.5	96.9	27.5	25.2	24.3	22.3

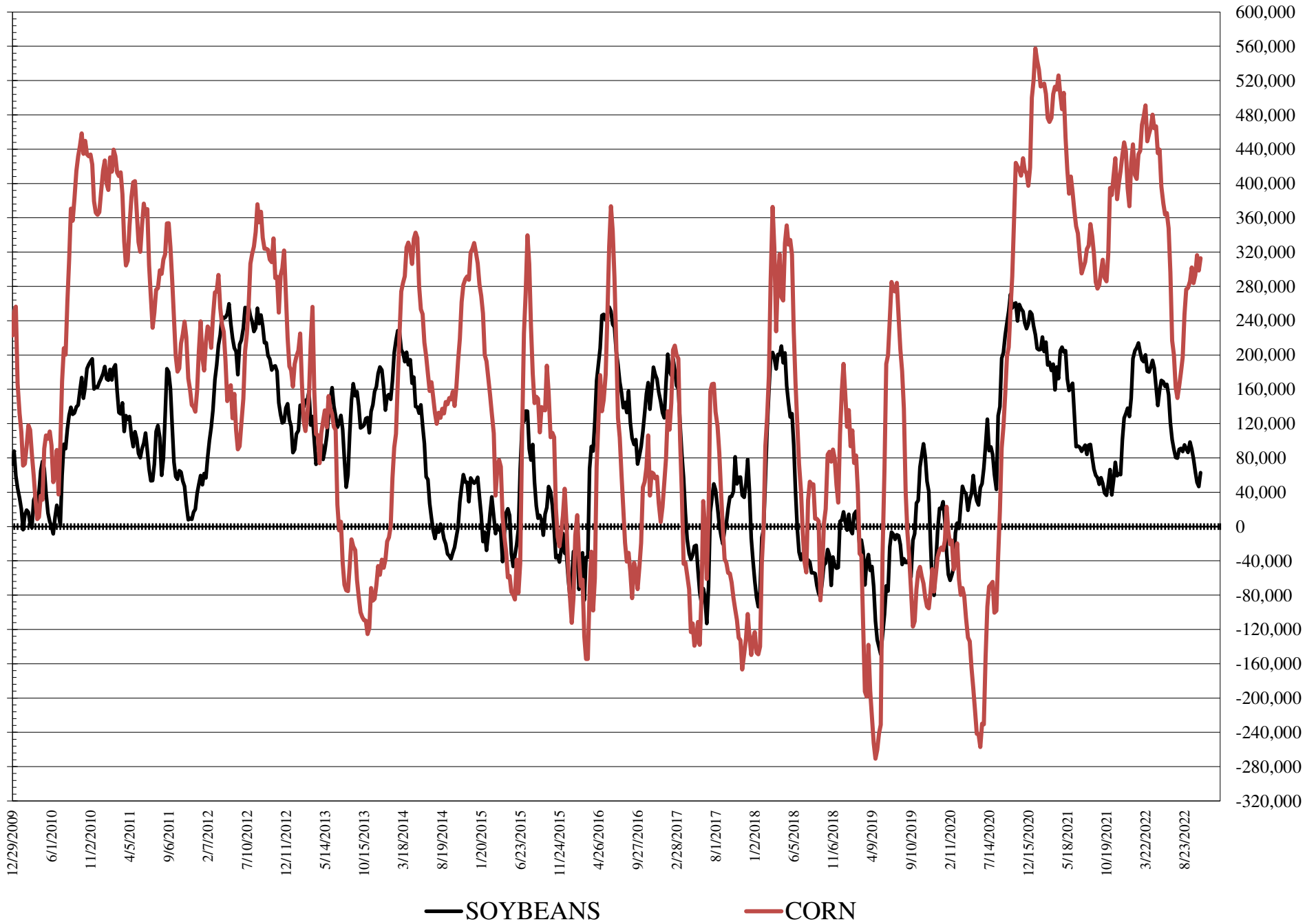
	<b>TOTAL OPEN INTEREST</b>				<b>COMMERCIALS</b>		<b>% HELD BY TRADERS LARGE (FUNDS)</b>		<b>SMALL (NON-REP)</b>	
	<b>25-Oct</b>	<b>18-Oct</b>	<b>11-Oct</b>	<b>4-Oct</b>	<b>LONG</b>	<b>SHORT</b>	<b>LONG</b>	<b>SHORT</b>	<b>LONG</b>	<b>SHORT</b>
<b>WHEAT</b>										
Chicago	411,948	404,388	410,978	391,177	38%	32%	19%	23%	8%	9%
Kansas City	174,982	174,916	174,177	169,709	41%	53%	24%	12%	12%	13%
Minneapolis	58,197	58,504	59,266	58,114	61%	68%	15%	5%	17%	19%
<b>CORN</b>	1,862,587	1,856,288	1,886,410	1,829,430	39%	52%	22%	5%	9%	12%
<b>OATS</b>	4,522	4,165	4,042	3,977						
<b>SOYBEANS</b>	721,646	847,777	833,186	810,388	51%	56%	17%	8%	8%	11%
<b>SOY OIL</b>	482,923	459,121	439,056	452,583	41%	64%	25%	6%	8%	5%
<b>SOY MEAL</b>	426,681	414,496	403,425	401,198	39%	71%	29%	3%	13%	6%

SOURCE: CFTC & FI

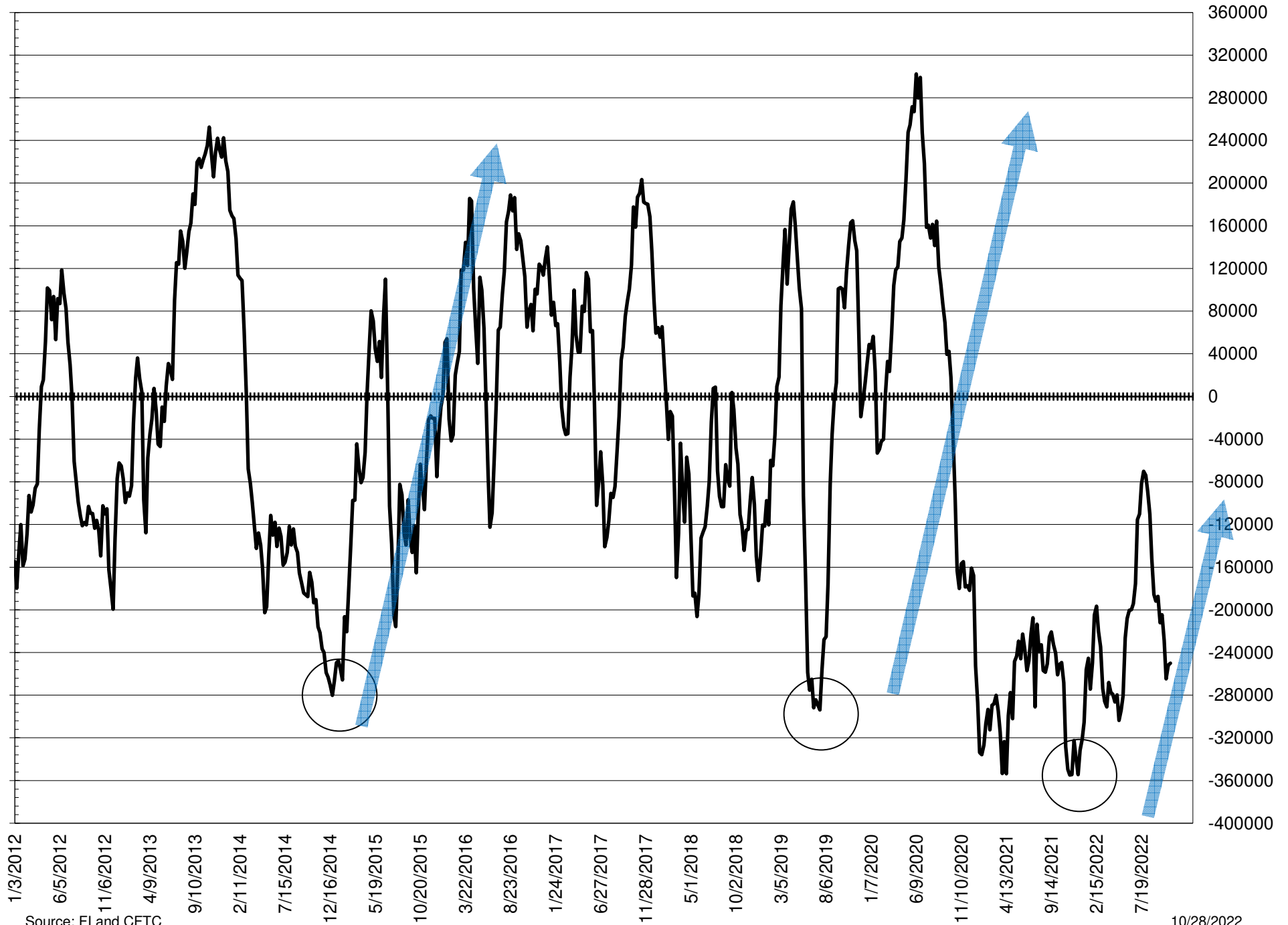
# NET POSITION FUTURES AND OPTIONS OF LARGE SPECULATORS IN SOYBEAN MEAL AND SOYBEAN OIL



# NET POSITION FUTURES AND OPTIONS OF LARGE SPECULATORS IN SOYBEANS AND CORN



# NET POSITION FUTURES AND OPTIONS SPREAD OF LARGE SPECULATORS IN SOYBEANS MINUS CORN



Source: FI and CFTC

10/28/2022



**DISAGGREGATED COMMITMENT OF TRADERS  
FUTURES & OPTIONS NET POSITIONS  
AS OF 10/25/2022  
(IN THOUSAND CONTRACTS)**

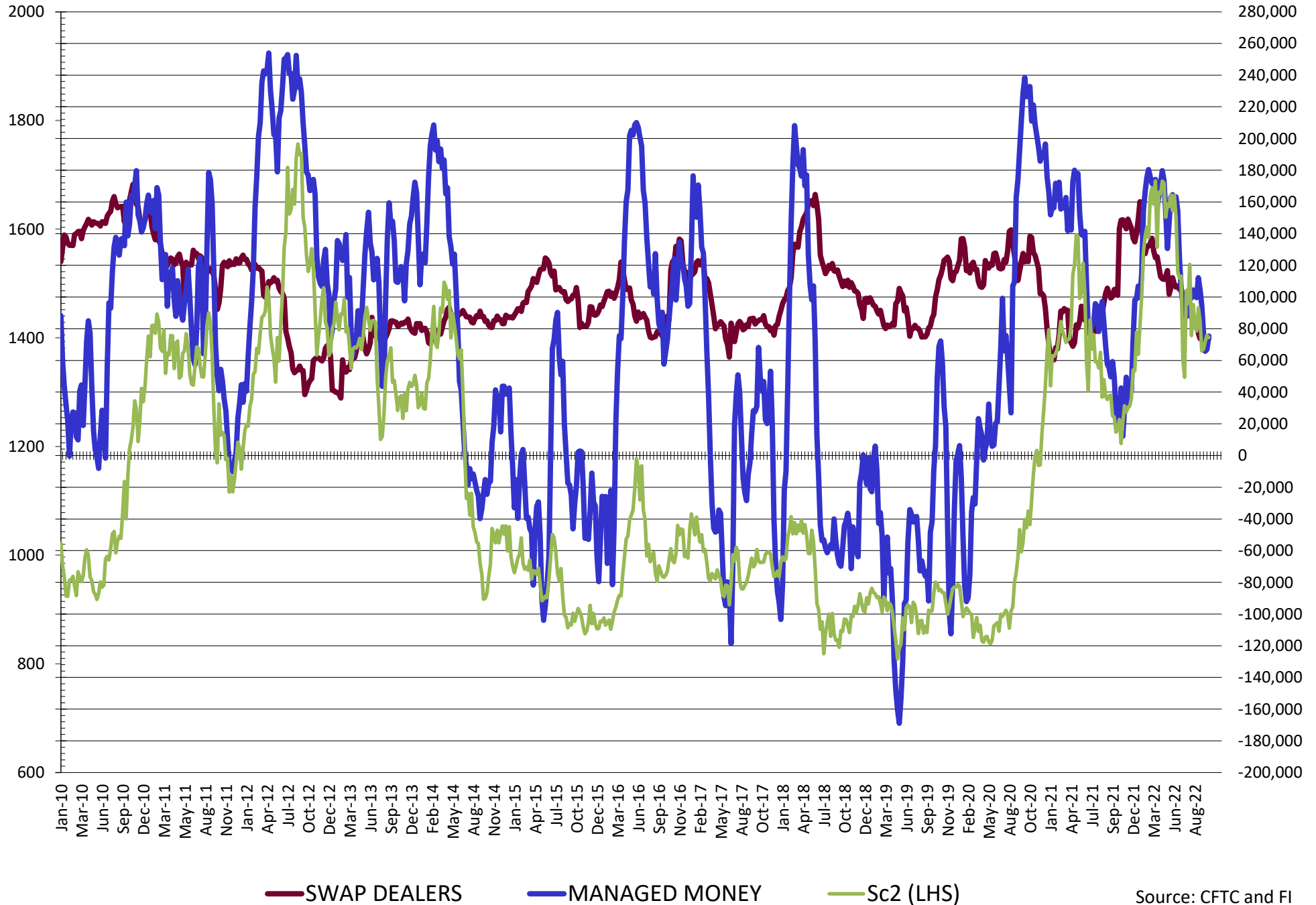
	PRODUCER / MERCHANT / PROCESSOR / USER				(INDEX/ETF) SWAP DEALERS				(CTA/CPO/OTHER UNREGISTERED) MANAGED MONEY			
	25-Oct	18-Oct	11-Oct	4-Oct	25-Oct	18-Oct	11-Oct	4-Oct	25-Oct	18-Oct	11-Oct	4-Oct
	WHEAT											
Chicago	(37.8)	(47.4)	(48.5)	(54.8)	61.2	60.7	60.0	58.3	(36.1)	(22.1)	(19.5)	(12.2)
Kansas City	(48.1)	(50.7)	(48.8)	(45.0)	27.5	27.1	27.8	25.1	24.6	26.3	26.5	25.6
Minneapolis	(5.4)	(5.9)	(7.5)	(8.0)	1.0	0.8	0.7	0.4	3.5	3.8	4.1	3.8
All Wheat	(91.4)	(104.0)	(104.9)	(107.8)	89.7	88.7	88.5	83.8	(7.9)	8.0	11.1	17.2
CORN	(476.4)	(455.3)	(463.6)	(440.8)	218.6	219.8	216.1	213.5	264.4	254.3	267.4	243.7
OATS	(0.2)	(1.0)	(1.0)	(1.0)	0.0	0.2	0.1	0.3	(1.2)	(0.8)	(0.8)	(0.8)
SOYBEANS	(113.4)	(90.8)	(95.9)	(106.8)	73.9	72.1	74.8	75.1	75.4	66.9	65.7	77.5
SOY OIL	(191.3)	(176.9)	(152.0)	(151.9)	85.0	85.4	84.9	85.9	95.2	75.0	61.0	62.8
SOY MEAL	(216.6)	(193.9)	(190.8)	(200.3)	80.4	79.5	80.0	81.0	86.0	70.8	70.4	79.7

	TOTAL OPEN INTEREST				OTHER REPORTABLE				NON REPORTABLE			
	25-Oct	18-Oct	11-Oct	4-Oct	25-Oct	18-Oct	11-Oct	4-Oct	25-Oct	18-Oct	11-Oct	4-Oct
	WHEAT											
Chicago	411,948	404,388	410,978	391,177	18.9	15.0	14.5	15.9	(6.3)	(6.3)	(6.4)	(7.2)
Kansas City	174,982	174,916	174,177	169,709	(3.1)	(1.4)	(3.3)	(3.6)	(0.8)	(1.4)	(2.2)	(2.2)
Minneapolis	58,197	58,504	59,266	58,114	2.4	2.4	2.6	3.1	(1.5)	(1.2)	0.1	0.7
All Wheat	645,127	637,808	644,421	619,000	18.1	16.1	13.8	15.4	(8.6)	(8.8)	(8.5)	(8.7)
CORN	1,862,587	1,856,288	1,886,410	1,829,430	48.4	44.3	49.0	49.5	(55.0)	(63.1)	(63.1)	(63.1)
OATS	4,522	4,165	4,042	3,977	0.6	0.8	0.7	0.6	0.8	0.8	0.9	0.9
SOYBEANS	721,646	847,777	833,186	810,388	(12.6)	(20.2)	(14.1)	(13.0)	(23.4)	(28.0)	(30.5)	(32.8)
SOY OIL	482,923	459,121	439,056	452,583	(1.6)	1.2	(4.7)	(4.9)	12.8	15.4	10.8	8.2
SOY MEAL	426,681	414,496	403,425	401,198	22.6	18.4	16.1	17.2	27.5	25.2	24.3	22.3

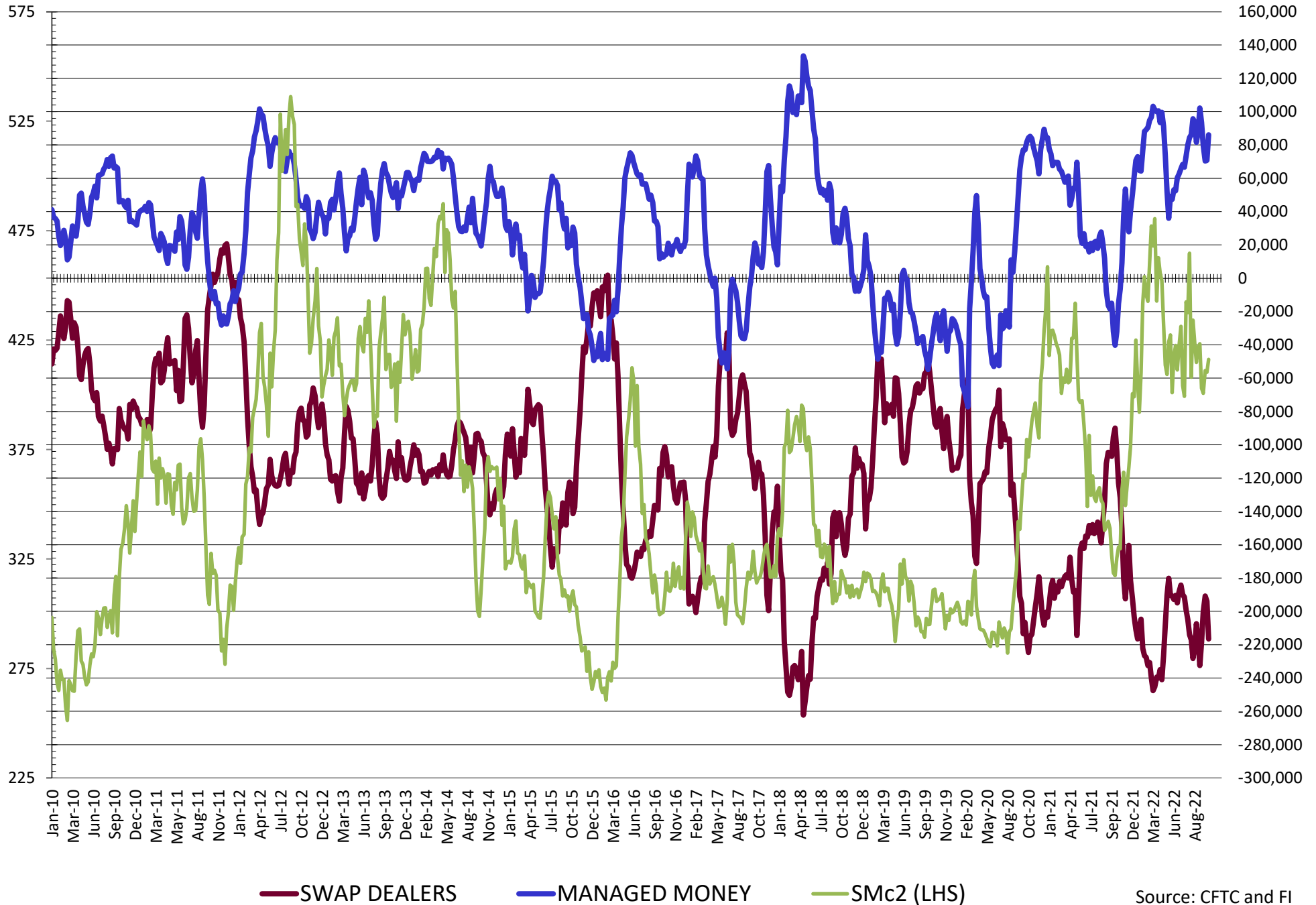
SOURCE: CFTC & FI



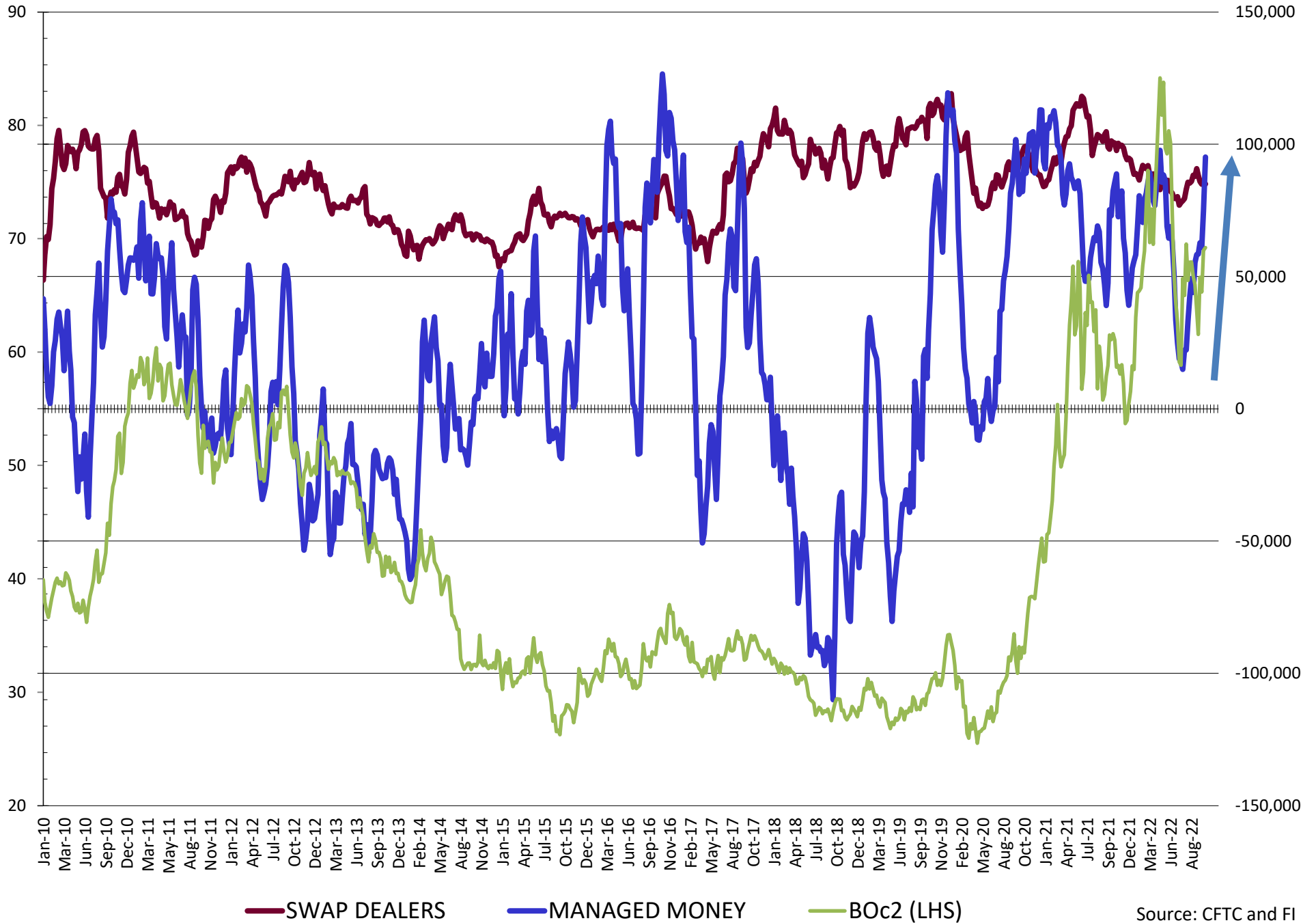
# NET POSITION FUTURES AND OPTIONS OF SWAP AND MANAGED FUNDS IN SOYBEANS



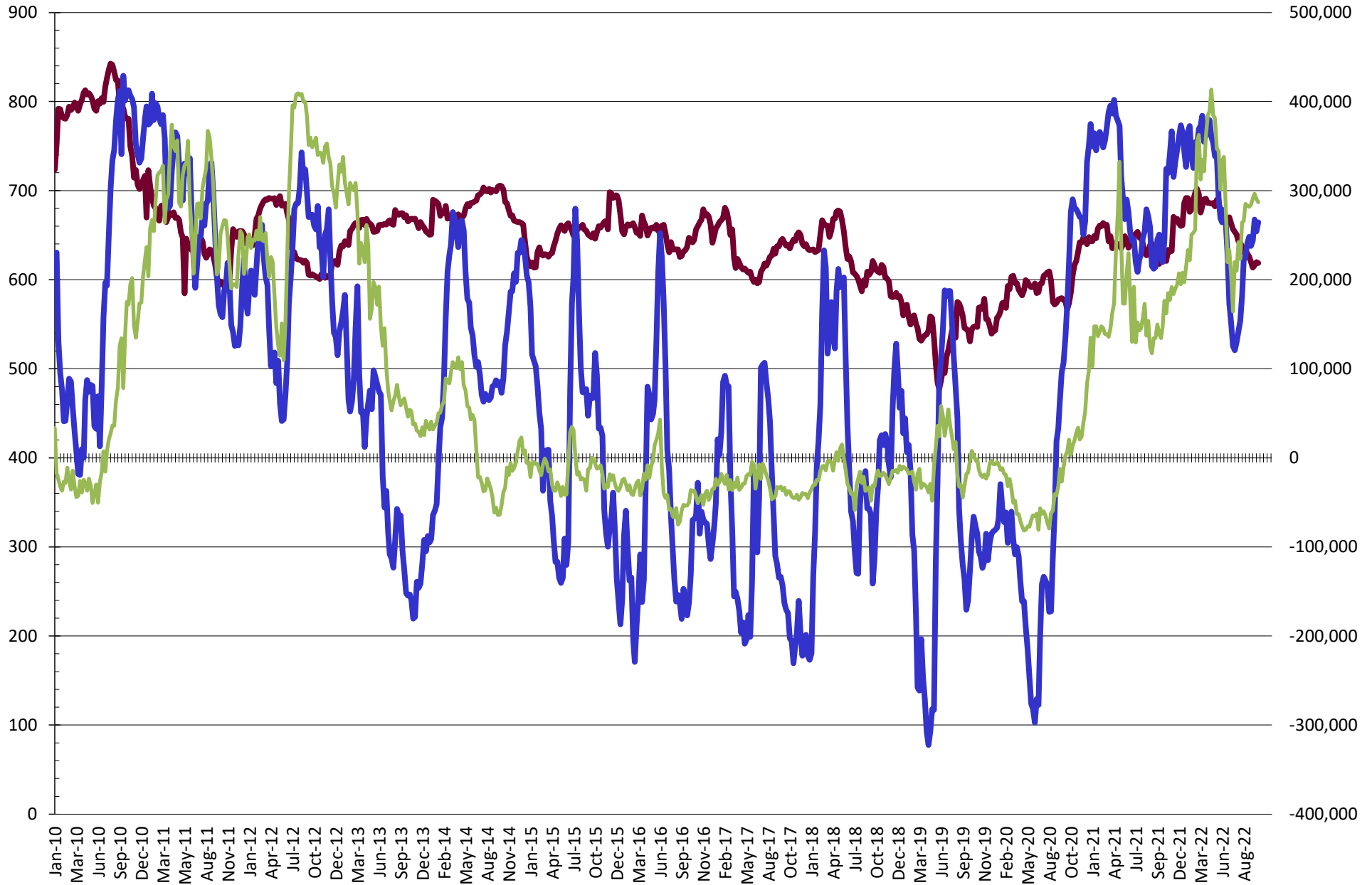
# NET POSITION FUTURES AND OPTIONS OF SWAP AND MANAGED FUNDS IN SOYBEAN MEAL



# NET POSITION FUTURES AND OPTIONS OF SWAP AND MANAGED FUNDS IN SOYBEAN OIL

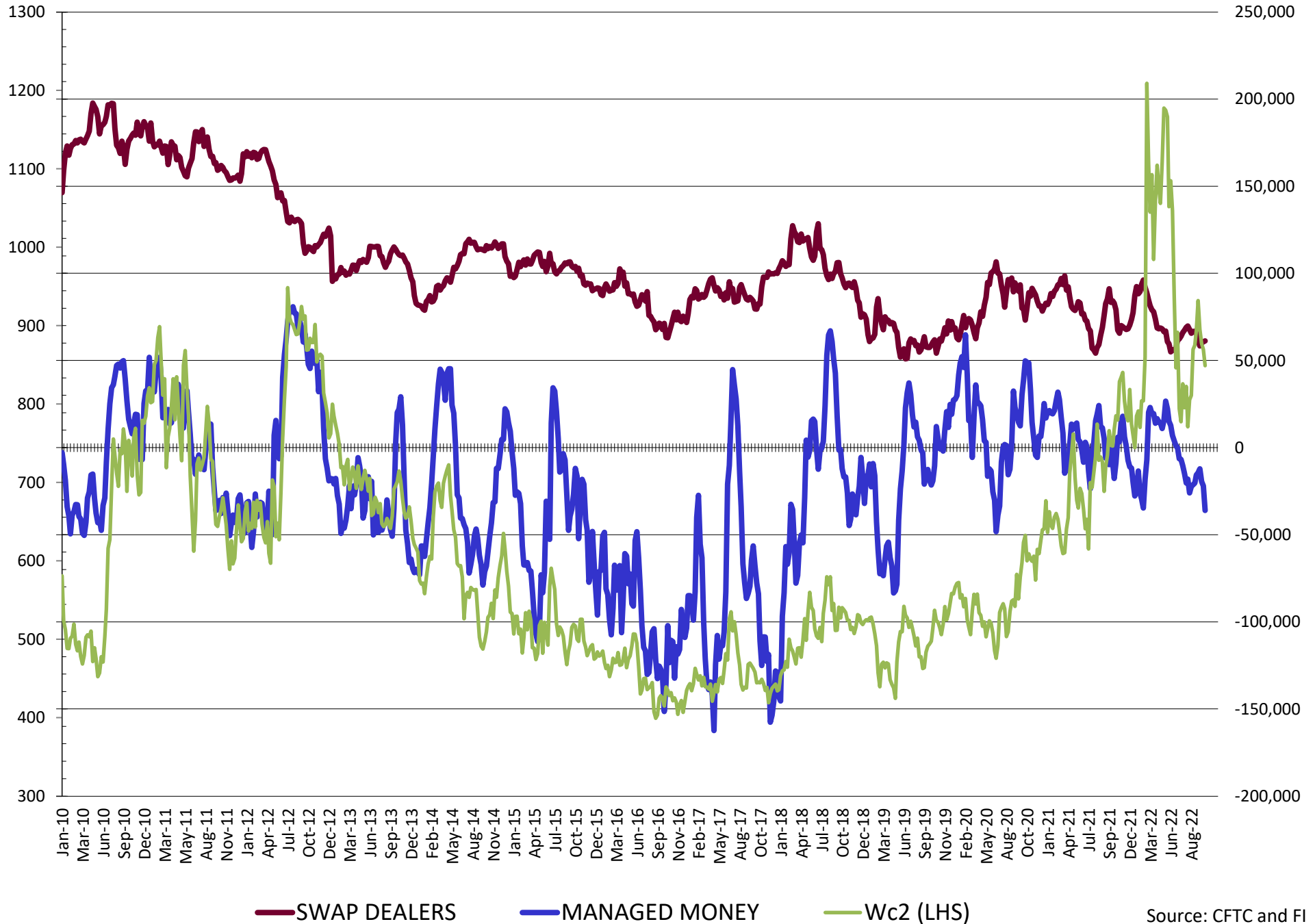


# NET POSITION FUTURES AND OPTIONS OF SWAP AND MANAGED FUNDS IN CORN

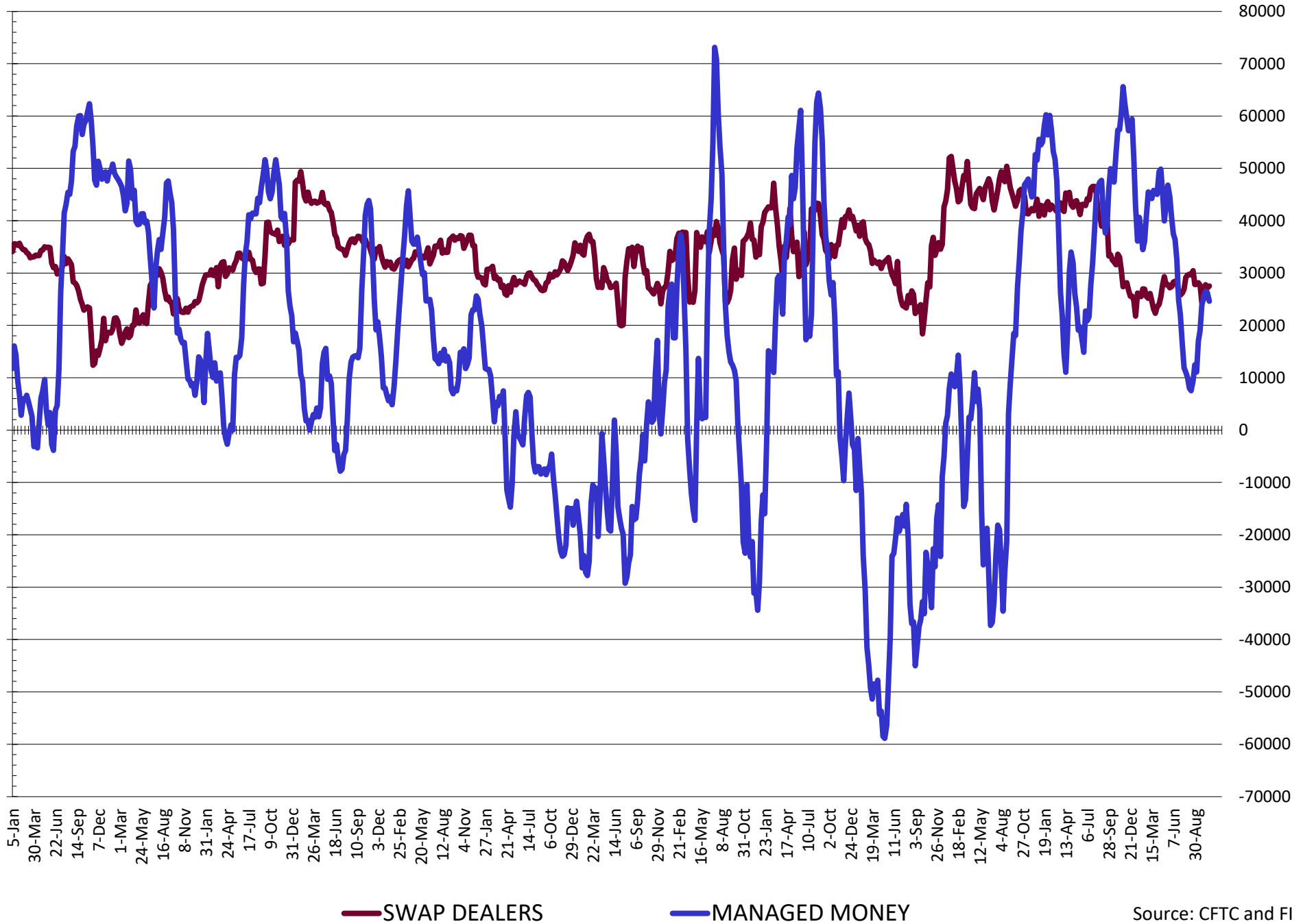


— SWAP DEALERS     
 — MANAGED MONEY     
 — Cc2 (LHS)

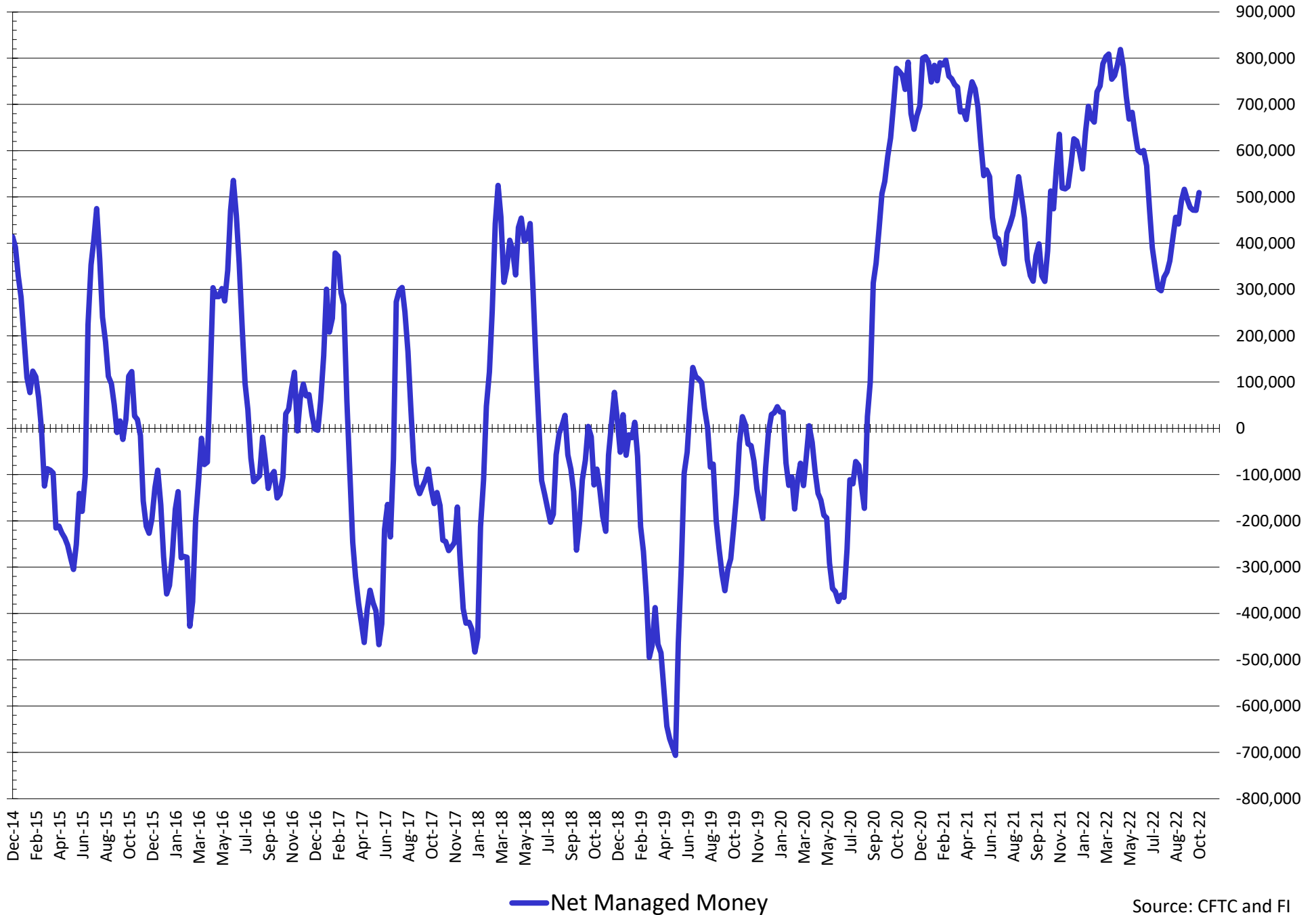
# NET POSITION FUTURES AND OPTIONS OF SWAP AND MANAGED FUNDS IN CHICAGO WHEAT



# NET POSITION FUTURES AND OPTIONS OF SWAP DEALERS AND MANAGED FUNDS IN KANSAS WHEAT



# NET POSITION FUTURES AND OPTIONS OF SWAP AND MANAGED FUNDS IN COMBINED SRW, HRW, CORN, SOYBEANS, SOYMEAL AND SOYOIL



Source: CFTC and FI  
10/28/2022

**COMMITMENT OF TRADERS**  
**FUTURES & OPTIONS NET POSITIONS (INDEX BROKEN OUT)**  
**AS OF 10/25/2022**  
(IN THOUSAND CONTRACTS)

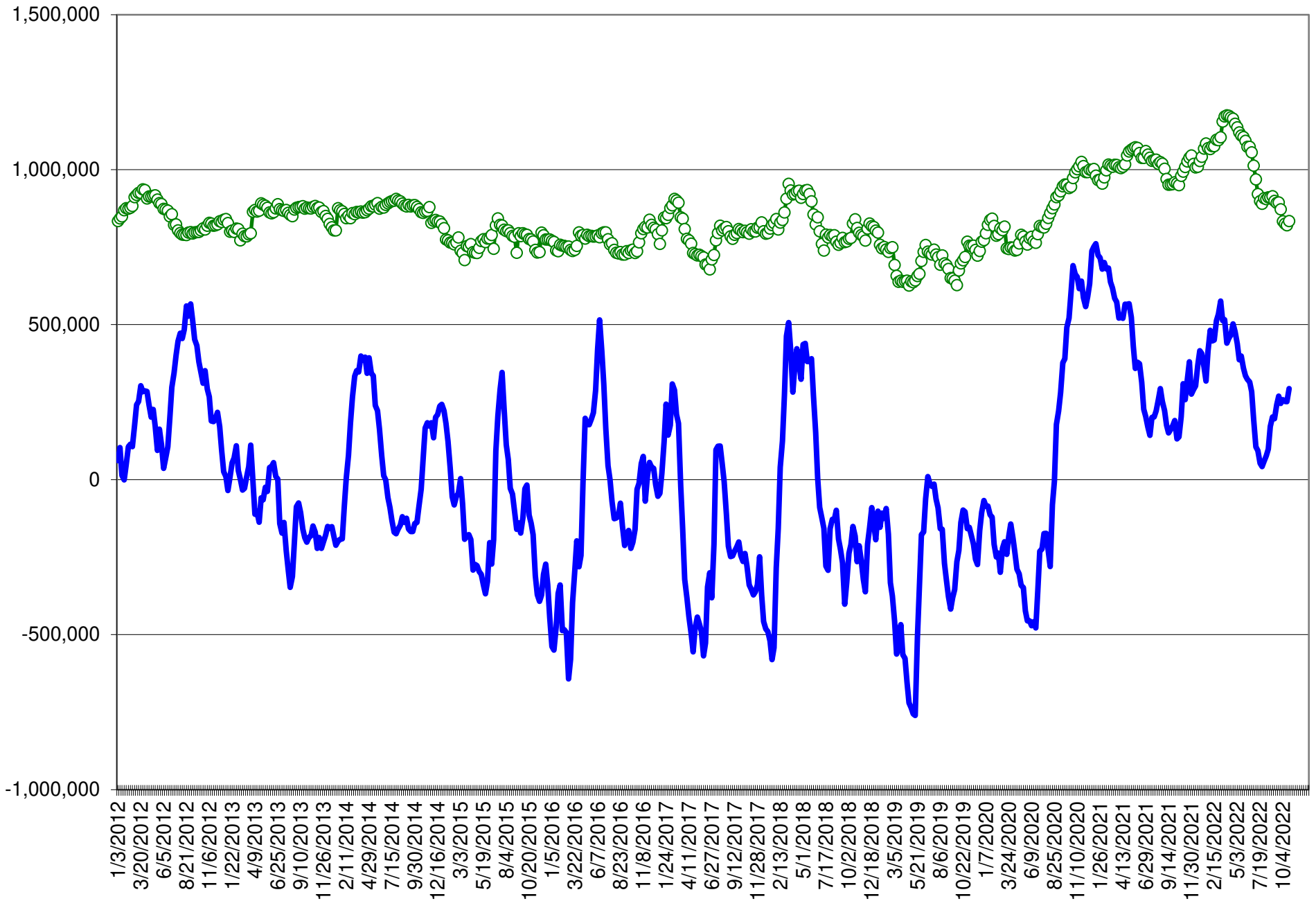
	COMMERCIAL				(FUND) NON COMMERCIAL				(SPEC) NON-REPORTABLE			
	25-Oct	18-Oct	11-Oct	4-Oct	25-Oct	18-Oct	11-Oct	4-Oct	25-Oct	18-Oct	11-Oct	4-Oct
	WHEAT											
Chicago	(45.7)	(56.4)	(58.6)	(66.0)	(50.6)	(41.5)	(43.4)	(36.8)	(6.3)	(6.3)	(6.4)	(7.2)
Kansas City	(52.0)	(55.0)	(53.7)	(52.2)	5.8	8.1	6.1	4.8	(0.8)	(1.4)	(2.2)	(2.2)
Minneapolis	-	-	-	-	-	-	-	-	-	-	-	-
All Wheat	(97.7)	(111.4)	(112.4)	(118.1)	(44.8)	(33.4)	(37.3)	(32.0)	(7.1)	(7.6)	(8.6)	(9.4)
CORN	(491.2)	(469.3)	(481.4)	(458.9)	184.7	176.2	193.9	175.2	(55.0)	(63.1)	(68.8)	(65.9)
OATS	-	-	-	-	-	-	-	-	-	-	-	-
SOYBEANS	(119.1)	(95.8)	(100.4)	(112.8)	26.9	10.6	15.7	24.5	(23.4)	(28.0)	(30.5)	(32.8)
SOY OIL	(172.0)	(156.8)	(132.5)	(133.6)	57.0	43.4	26.3	28.7	12.8	15.4	10.8	8.2
SOY MEAL	(203.0)	(180.6)	(178.1)	(189.8)	70.0	54.4	53.3	61.3	27.5	25.2	24.3	22.3

	TOTAL OPEN INTEREST				(INDEX) COMMERCIAL INDEX TRADERS				(INDEX) % NET OF TOTAL OPEN INTEREST			
	25-Oct	18-Oct	11-Oct	4-Oct	25-Oct	18-Oct	11-Oct	4-Oct	25-Oct	18-Oct	11-Oct	4-Oct
	WHEAT											
Chicago	411,948	404,388	410,978	391,177	102.5	104.2	108.5	110.0	24.9%	25.8%	26.4%	28.1%
Kansas City	174,982	174,916	174,177	169,709	47.0	48.3	49.8	49.6	26.9%	27.6%	28.6%	29.2%
Minneapolis	-	-	-	-	-	-	-	-	-	-	-	-
All Wheat	586,930	579,304	585,155	560,886	149.5	152.4	158.3	159.6	25.5%	26.3%	27.1%	28.5%
CORN	1,862,587	1,856,288	1,886,410	1,829,430	361.5	356.1	356.3	349.6	19.4%	19.2%	18.9%	19.1%
OATS	-	-	-	-	-	-	-	-	-	-	-	-
SOYBEANS	721,646	847,777	833,186	810,388	115.5	113.2	115.2	121.0	16.0%	13.3%	13.8%	14.9%
SOY OIL	482,923	459,121	439,056	452,583	102.2	98.0	95.4	96.8	21.2%	21.4%	21.7%	21.4%
SOY MEAL	426,681	414,496	403,425	401,198	105.4	100.9	100.5	106.2	24.7%	24.4%	24.9%	26.5%

SOURCE: CFTC & FI



# NET POSITION FUTURES AND OPTIONS OF SPECULATORS AND INDEX FUNDS IN COMBINED SRW, HRW, CORN, SOYBEANS, SOYMEAL AND SOYOIL



Source: CFTC and FI

○ Net Index

— Net Speculator

10/28/2022

## Traditional Daily Estimate of Funds 10/25/22

	(Neg)-"Short"	Pos-"Long"			
Actual less Est.	15.4	(1.3)	(4.4)	11.0	4.9
	<b>Corn</b>	<b>Bean</b>	<b>Chi. Wheat</b>	<b>Meal</b>	<b>Oil</b>
<b>Actual</b>	329.8	57.4	(12.9)	116.1	93.2
26-Oct	(1.0)	0.0	2.0	(3.0)	4.0
27-Oct	(3.0)	0.0	(1.0)	2.0	(4.0)
28-Oct	(1.0)	2.0	(3.0)	4.0	(2.0)
31-Oct					
1-Nov					
<b>FI Est. of Futures Only 10/25/22</b>	<b>324.8</b>	<b>59.4</b>	<b>(14.9)</b>	<b>119.1</b>	<b>91.2</b>
<b>FI Est. Futures &amp; Options</b>	<b>307.8</b>	<b>64.8</b>	<b>(19.1)</b>	<b>111.6</b>	<b>91.5</b>
Futures only record long "Traditional Funds"	547.7 1/26/2021	280.9 11/10/2020	86.5 8/7/2018	167.5 5/1/2018	160.2 11/1/2016
Futures only record short	(235.0) 6/9/2020	(118.3) 4/30/2019	(130.0) 4/25/2017	(49.5) 3/1/2016	(69.8) 9/18/2018
Futures and options record net long	557.6 1/12/2021	270.9 10/6/2020	64.8 8/7/2012	132.1 5/1/2018	159.2 1/1/2016
Futures and options record net short	(270.6) 4/26/2019	(132.0) 4/30/2019	(143.3) 4/25/2017	(64.1) 3/1/2016	(77.8) 9/18/2018

## Managed Money Daily Estimate of Funds 10/25/22

	Corn	Bean	Chi. Wheat	Meal	Oil
Latest CFTC Fut. Only	248.9	75.5	(36.8)	86.5	95.7
Latest CFTC F&O	264.4	75.4	(36.1)	86.0	95.2
FI Est. Managed Fut. Only	244	78	(39)	89	94
FI Est. Managed Money F&O	259	77	(38)	89	93

## Index Funds Latest Positions (as of last Tuesday)

Index Futures & Options	361.5	115.5	102.5	NA	102.2
Change From Previous Week	5.4	2.4	(1.6)	NA	4.1

Source: Reuters, CFTC & FI (FI est. are noted with latest date)

# Disclaimer

TO CLIENTS/PROSPECTS OF FUTURES INTERNATIONAL, SEE RISK DISCLOSURE BELOW:

THIS COMMUNICATION IS CONVEYED AS A SOLICITATION FOR ENTERING INTO A DERIVATIVES TRANSACTION.

Any trading recommendations and market or other information to Customer by Futures International (FI), although based upon information obtained from sources believed by FI to be reliable may not be accurate and may be changed without notice to customer. FI makes no guarantee as to the accuracy or completeness of any of the information or recommendations furnished to Customer. Customer understands that FI, its managers, employees and/or affiliates may have a position in commodity futures, options or other derivatives which may not be consistent with the recommendations furnished by FI to Customer.

The risk of trading futures and options and other derivatives involves a substantial risk of loss and is not suitable for all persons. In purchasing an option, the risk is limited to the premium paid, and all commissions and fees involved with the trade. When an option is shorted or written, the writer of the option has unlimited risk with respect to the option written. The use of options strategies such as a straddles and strangles involve multiple option positions and may substantially increase the amount of commissions and fees paid to execute the strategy. Option prices do not necessarily move in tandem with cash or futures prices. Each person must consider whether a particular trade, combination of trades or strategy is suitable for that person's financial means and objectives.

This material may include discussions of seasonal patterns, however, futures prices have already factored in the seasonal aspects of supply and demand, and seasonal patterns are no indication of future market trends. Finally, past performance is not indicative of future results.

This communication may contain links to third party websites which are not under the control of FI and FI is not responsible for their content. Products and services are offered only in jurisdictions where solicitation and sale are lawful, and in accordance with applicable laws and regulations in each such jurisdiction.