

# CFTC COMMITMENT OF TRADERS REPORT

As of 11/8/2022

## TRADITIONAL FUNDS net position changes

Wed to Tue, in 000 contracts

	Corn	Bean	Meal	Oil	Chi. Wheat	KC Wheat	Min Wheat
Futures Only	(39.2)	1.3	1.7	2.9	(1.4)	0.3	(0.8)
Futures & Options Combined	(45.2)	(0.5)	1.3	5.1	(2.9)	0.2	(1.0)

## TRADITIONAL COMMERCIAL net position changes

	Corn	Bean	Meal	Oil	Chi. Wheat	KC Wheat	Min Wheat
Futures Only	32.6	(3.1)	(2.3)	(1.7)	1.2	(0.6)	1.3
Futures & Options Combined	41.6	(0.9)	(1.5)	(3.6)	2.1	(0.4)	1.5

## MANAGED MONEY net position changes

	Corn	Bean	Meal	Oil	Chi. Wheat	KC Wheat	Min Wheat
Futures Only	(39.7)	3.1	1.7	5.9	(6.8)	1.1	(0.8)
Futures & Options Combined	(34.3)	2.6	2.0	5.1	(5.8)	1.0	(0.8)

## SWAP DEALERS net position changes

	Corn	Bean	Meal	Oil	Chi. Wheat	KC Wheat	Min Wheat
Futures Only	9.6	0.6	2.0	2.7	2.6	2.2	0.7
Futures & Options Combined	11.6	0.9	2.3	2.9	1.3	2.4	0.7

## PRODUCERS/END USERS net position changes

	Corn	Bean	Meal	Oil	Chi. Wheat	KC Wheat	Min Wheat
Futures Only	23.0	(3.6)	(4.3)	(4.4)	(1.4)	(2.9)	0.6
Futures & Options Combined	29.9	(1.8)	(3.8)	(6.5)	0.8	(2.8)	0.7

## INDEX net position changes

	Corn	Bean	Meal	Oil	Chi. Wheat	KC Wheat	Min Wheat
Futures & Options Combined	1.9	0.8	4.1	2.5	3.7	(1.6)	NA

## SUPPLEMENTAL NON-COMMERCIAL net position changes

	Corn	Bean	Meal	Oil	Chi. Wheat	KC Wheat	Min Wheat
Futures & Options Combined	(43.4)	(1.5)	(1.0)	4.3	(6.1)	1.5	NA

## OPEN INTEREST net position changes

Wed to Tue, in 000 contracts

	Corn	Bean	Meal	Oil	Chi. Wheat	KC Wheat	Min Wheat
Futures Only	11.9	26.9	18.9	16.9	17.8	(4.8)	(5.1)
Futures & Options Combined	4.0	34.4	18.4	25.2	8.7	(6.5)	(5.4)

Source: CFTC and FI

Wed to Tue, in 000 contracts

11/14/2022

**COMMITMENT OF TRADERS  
FUTURES ONLY NET POSITIONS  
AS OF 11/08/2022  
(IN THOUSAND CONTRACTS)**

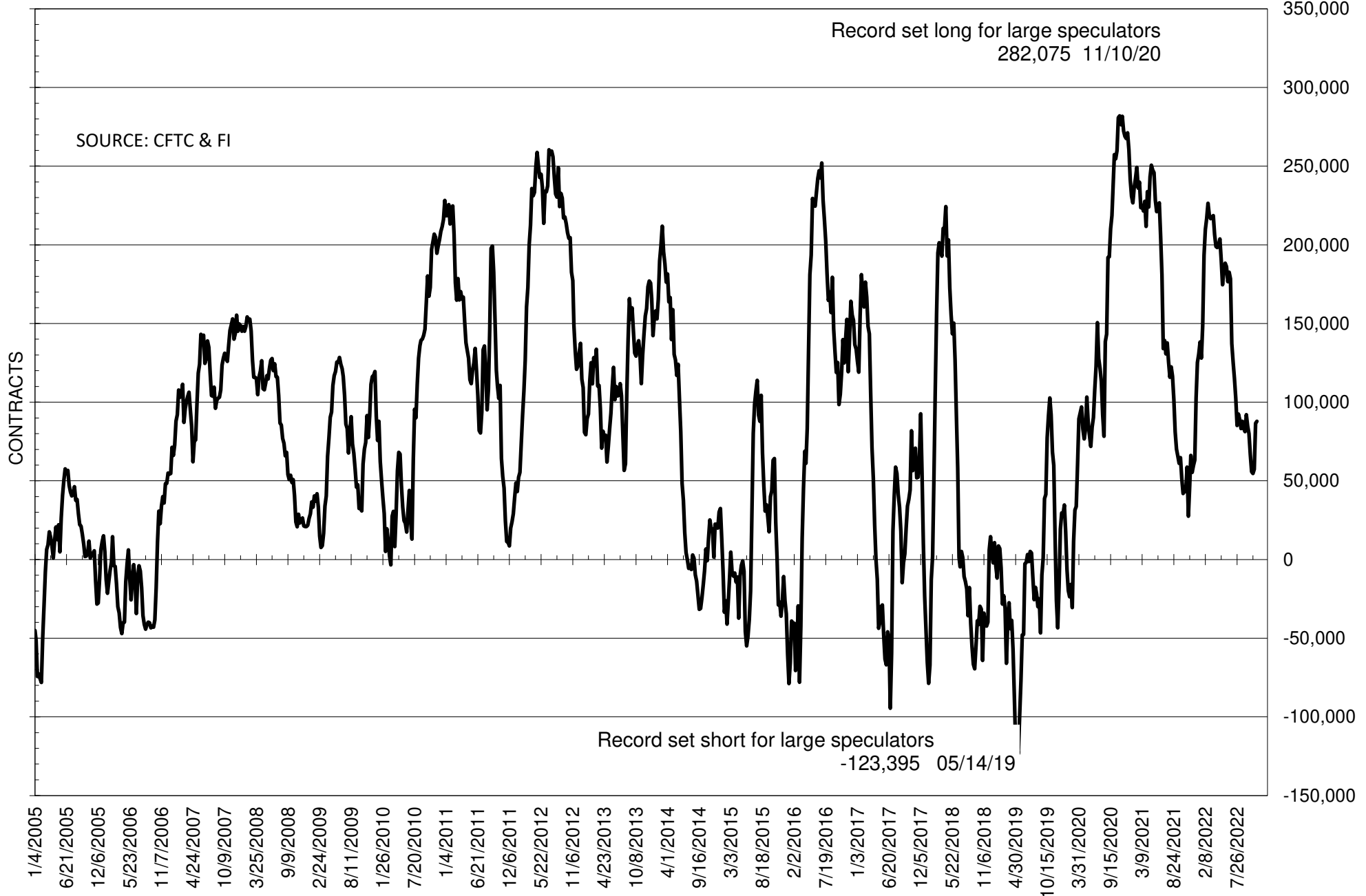
	COMMERCIAL				(FUND) NON COMMERCIAL				(SPEC) NON-REPORTABLE			
	8-Nov	1-Nov	25-Oct	18-Oct	8-Nov	1-Nov	25-Oct	18-Oct	8-Nov	1-Nov	25-Oct	18-Oct
	<b>WHEAT</b>											
Chicago	23.7	22.5	19.9	10.5	-17.2	-15.8	-12.9	-3.5	-6.5	-6.7	-7.0	-7.0
Kansas City	-19.5	-18.9	-20.3	-22.7	20.6	20.3	21.6	24.7	-1.1	-1.5	-1.4	-2.0
Minneapolis	-3.2	-4.5	-4.5	-5.1	5.3	6.1	6.0	6.3	-2.1	-1.6	-1.6	-1.2
All Wheat	1.0	-0.9	-4.8	-17.3	8.7	10.7	14.8	27.5	-9.7	-9.8	-9.9	-10.2
<b>CORN</b>	-254.2	-286.8	-273.6	-249.3	301.6	340.8	329.8	312.4	-47.4	-54.0	-56.1	-63.2
<b>OATS</b>	0.0	-0.1	-0.3	-0.8	-0.5	-0.6	-0.5	0.1	0.5	0.7	0.8	0.8
<b>SOYBEANS</b>	-61.0	-57.9	-35.3	-30.6	87.8	86.5	57.4	54.7	-26.8	-28.6	-22.1	-24.1
<b>SOY OIL</b>	-112.8	-111.1	-106.0	-91.5	100.0	97.1	93.2	76.3	12.8	14.0	12.8	15.2
<b>SOY MEAL</b>	-147.6	-145.3	-141.2	-122.1	121.2	119.5	116.1	99.1	26.4	25.8	25.1	23.0

Oats positions thin to be reported

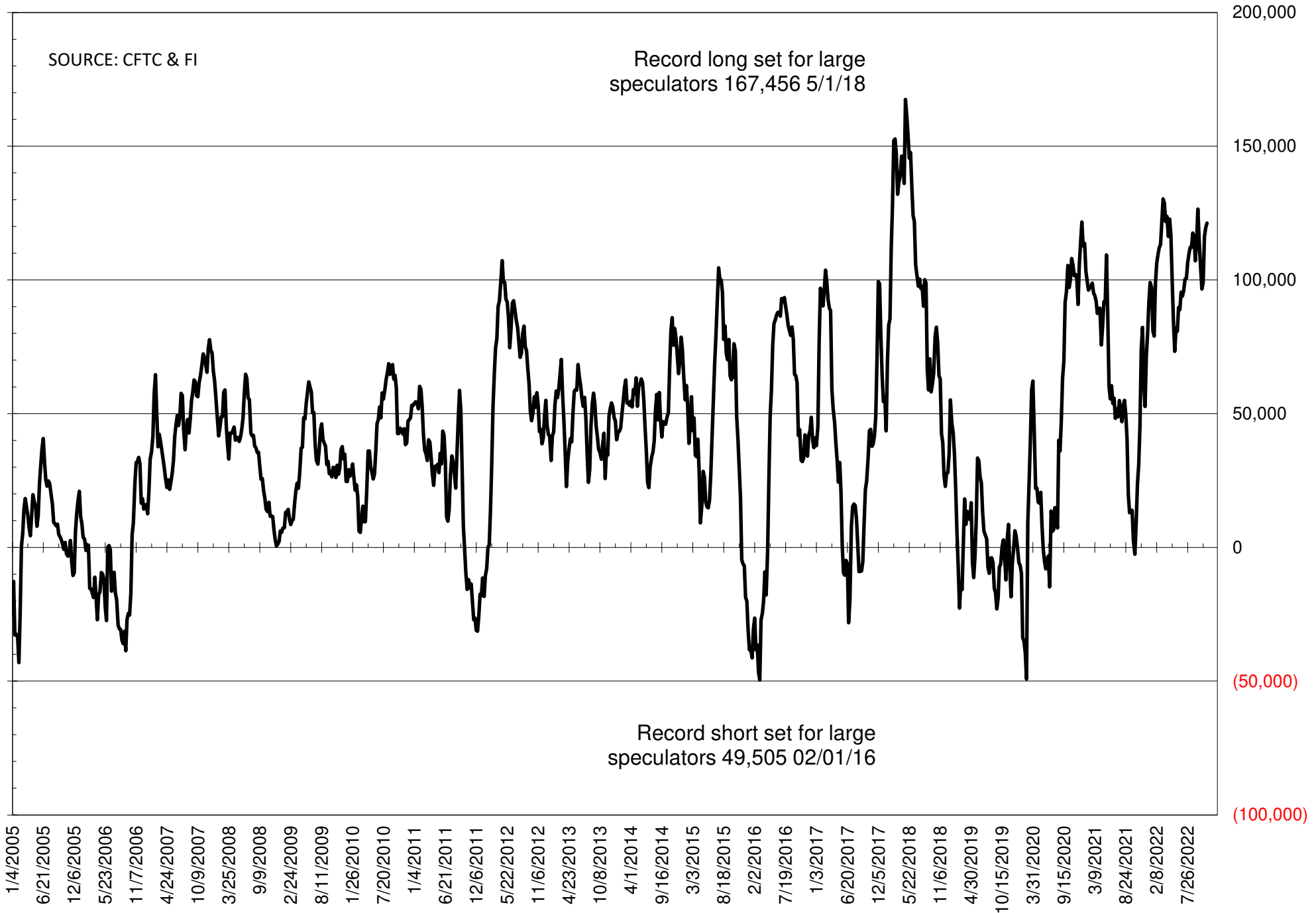
	TOTAL OPEN INTEREST				NEARBY FUTURES PRICE					8-Nov-22 LAST REPORTED % HELD BY TRADERS			
	8-Nov	1-Nov	25-Oct	18-Oct	Z/F Latest	Z/F 8-Nov	Z/F 1-Nov	X/Z 25-Oct	X/Z 18-Oct	LARGE FUND		SMALL	
										LONG	SHORT	LONG	SHORT
<b>WHEAT</b>													
Chicago	350843	333061	324137	309429	818.50	827.75	902.50	834.75	849.50	0%	32%	0%	11%
Kansas City	155333	160095	158382	157624	956.25	945.75	990.00	934.50	944.50	0%	13%	0%	13%
Minneapolis	50165	55270	55765	56053	963.00	950.25	987.25	952.25	956.00	0%	6%	0%	21%
<b>CORN</b>	1484427	1472517	1445842	1419087	657.25	667.50	697.75	686.25	681.00	0%	9%	0%	12%
<b>OATS</b>	4558	4228	4421	4042	394.25	380.75	399.50	357.50	387.25	0%	26%	0%	24%
<b>SOYBEANS</b>	611011	584073	651685	714532	1440.50	1446.50	1447.75	1382.00	1372.00	25%	11%	7%	12%
<b>SOY OIL</b>	447632	430748	426276	406354	76.28	75.03	73.37	72.28	68.74	0%	7%	0%	6%
<b>SOY MEAL</b>	410292	391398	388147	372161	406.00	419.30	424.80	415.60	401.80	0%	4%	0%	6%

SOURCE: CFTC & FI

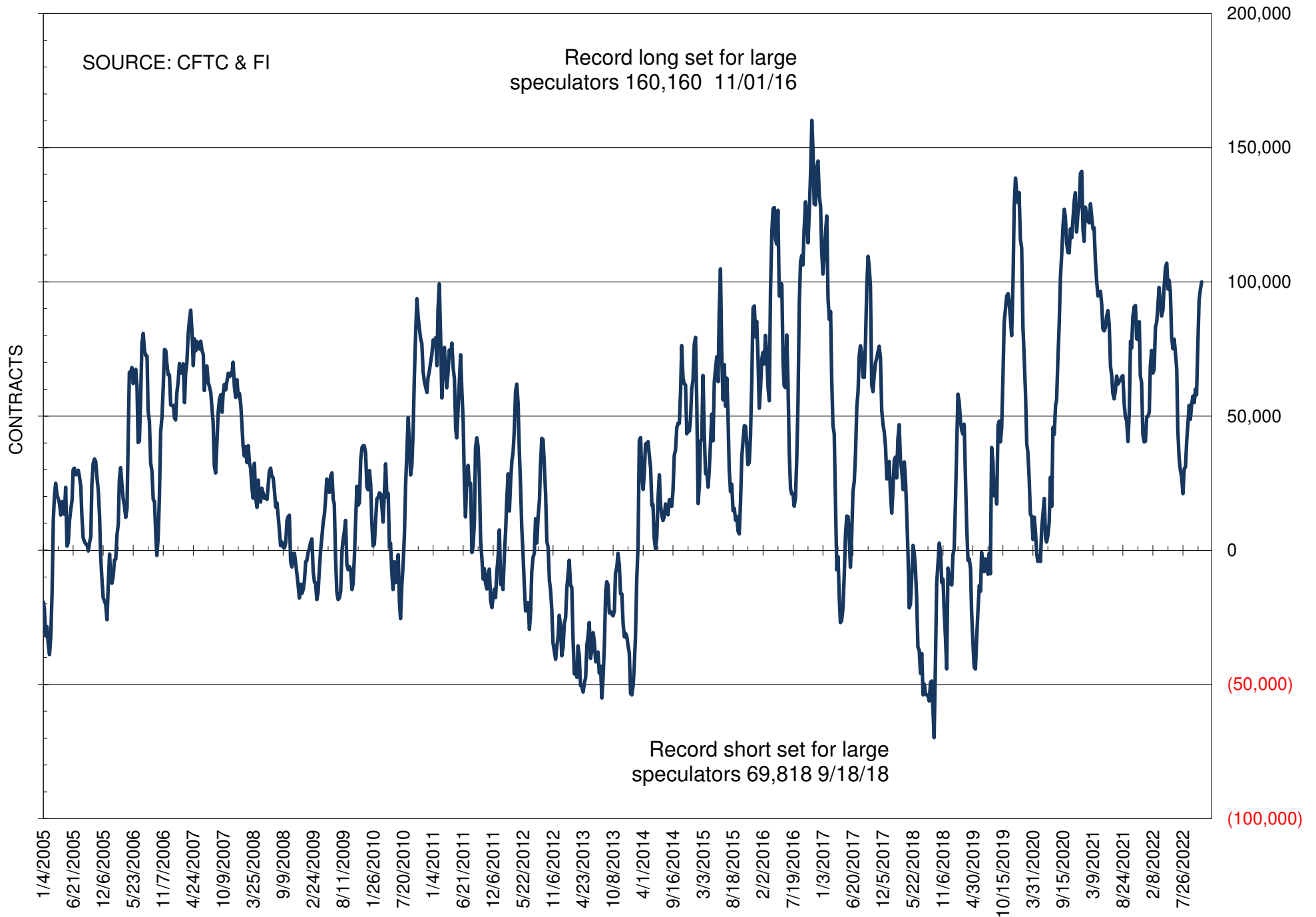
# NET POSITION OF FUTURES ONLY LARGE SPECS IN SOYBEANS



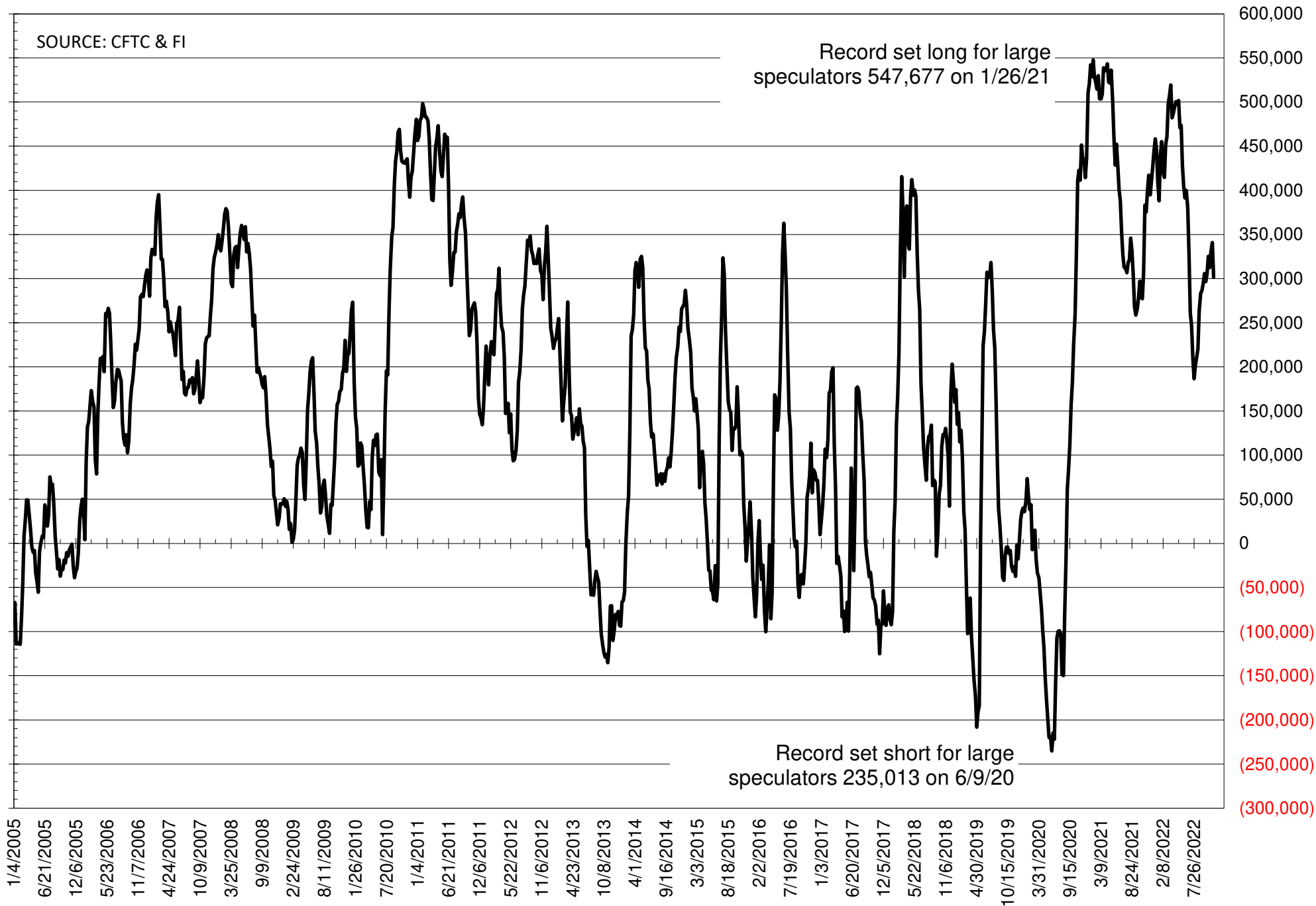
# NET POSITION OF FUTURES ONLY LARGE SPECS IN SOYMEAL



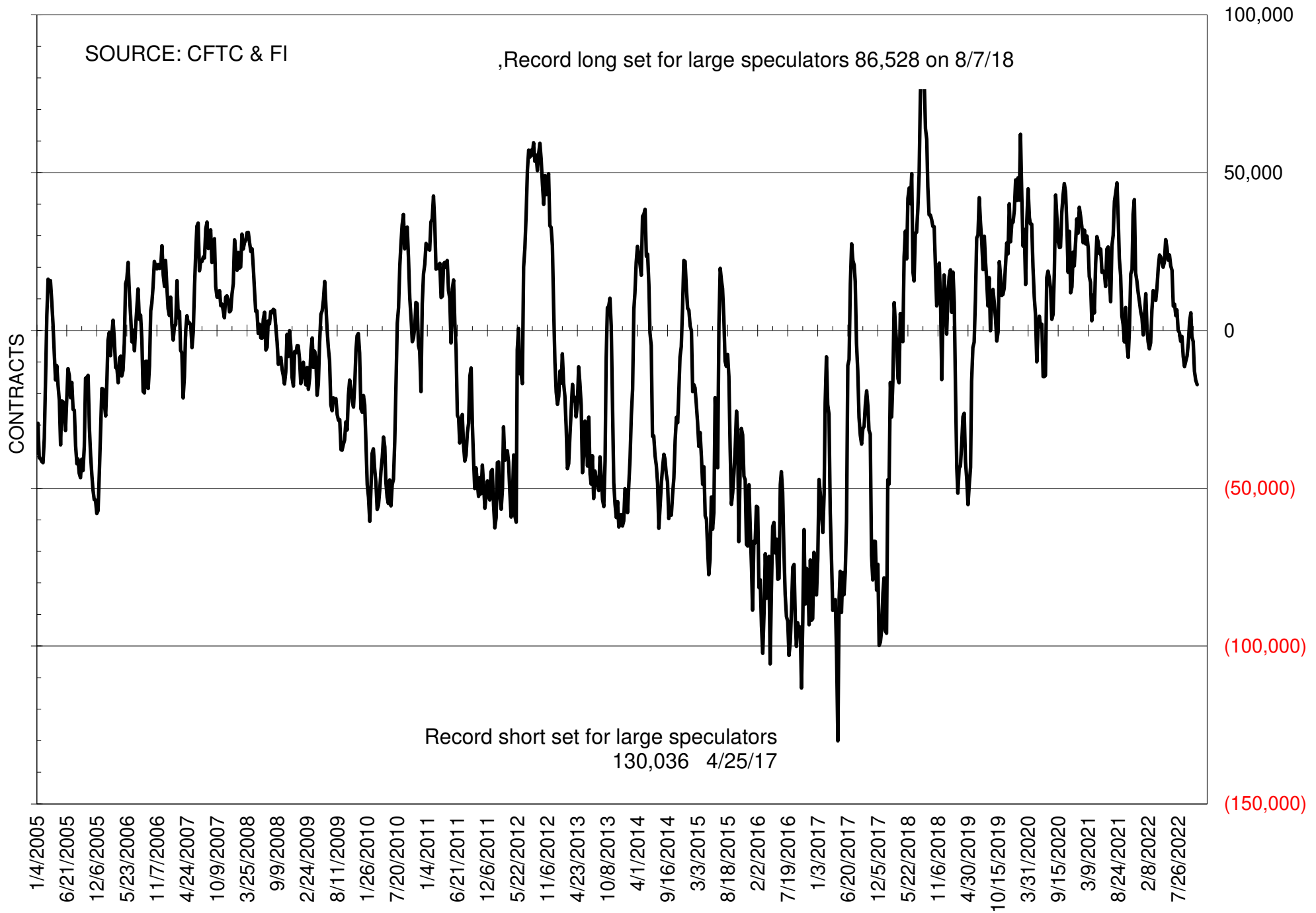
# NET POSITION OF FUTURES ONLY LARGE SPECS IN SOYOIL



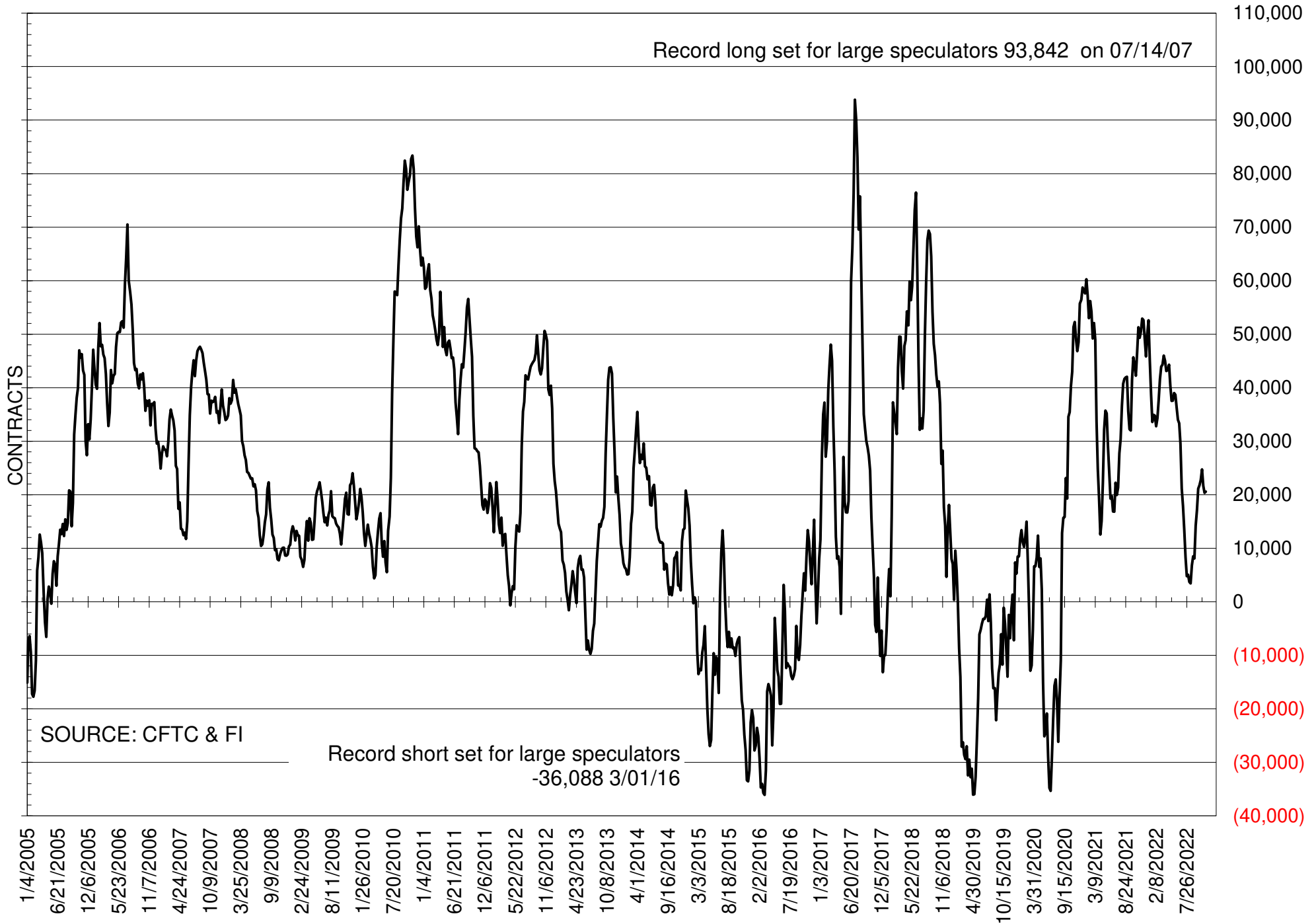
# NET POSITION OF LARGE SPECULATORS IN CORN



# NET POSITION OF FUTURES ONLY LARGE SPECS IN CHICAGO WHEAT

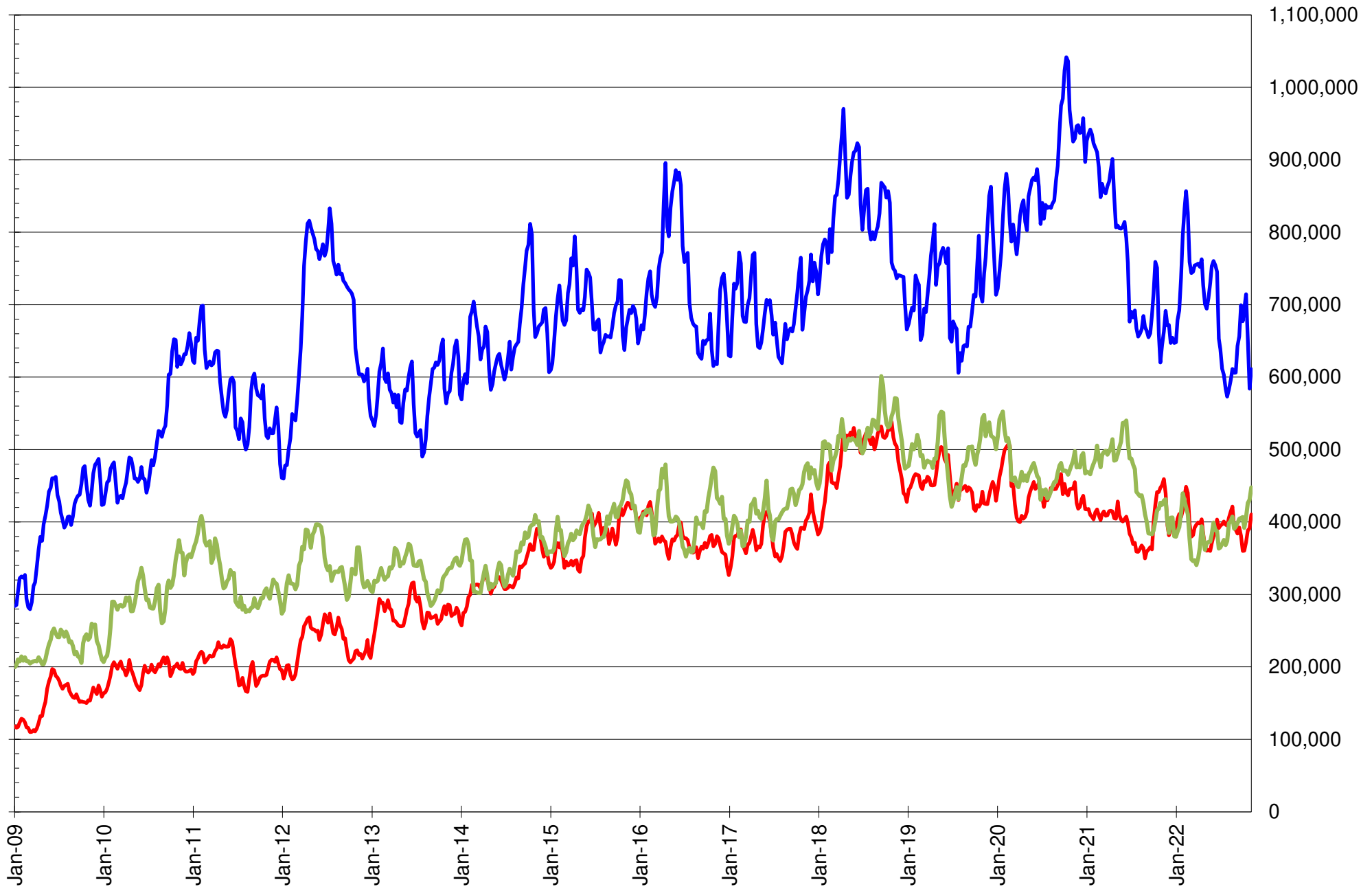


# NET POSITION OF LARGE SPECULATORS IN KANSAS CITY WHEAT





# TOTAL OPEN INTEREST IN SOYBEANS, MEAL AND OIL, FUTURES ONLY



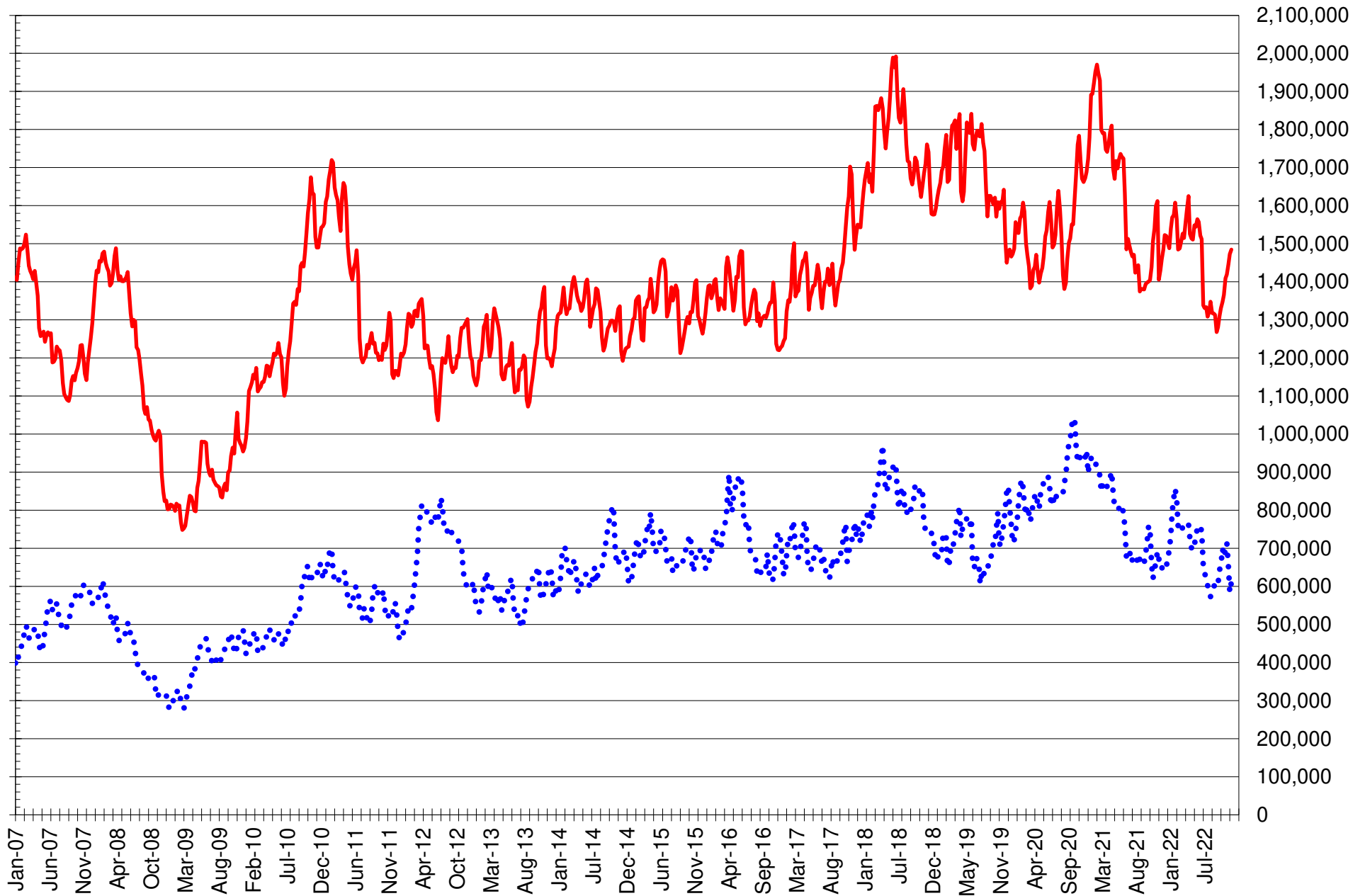
SOURCE: CFTC & FI

— SOYBEANS

— SOYBEAN MEAL

— SOYBEAN OIL

# TOTAL OPEN INTEREST IN CORN AND SOYBEANS, FUTURES ONLY



SOURCE: CFTC & FI

— CORN

..... SOYBEANS

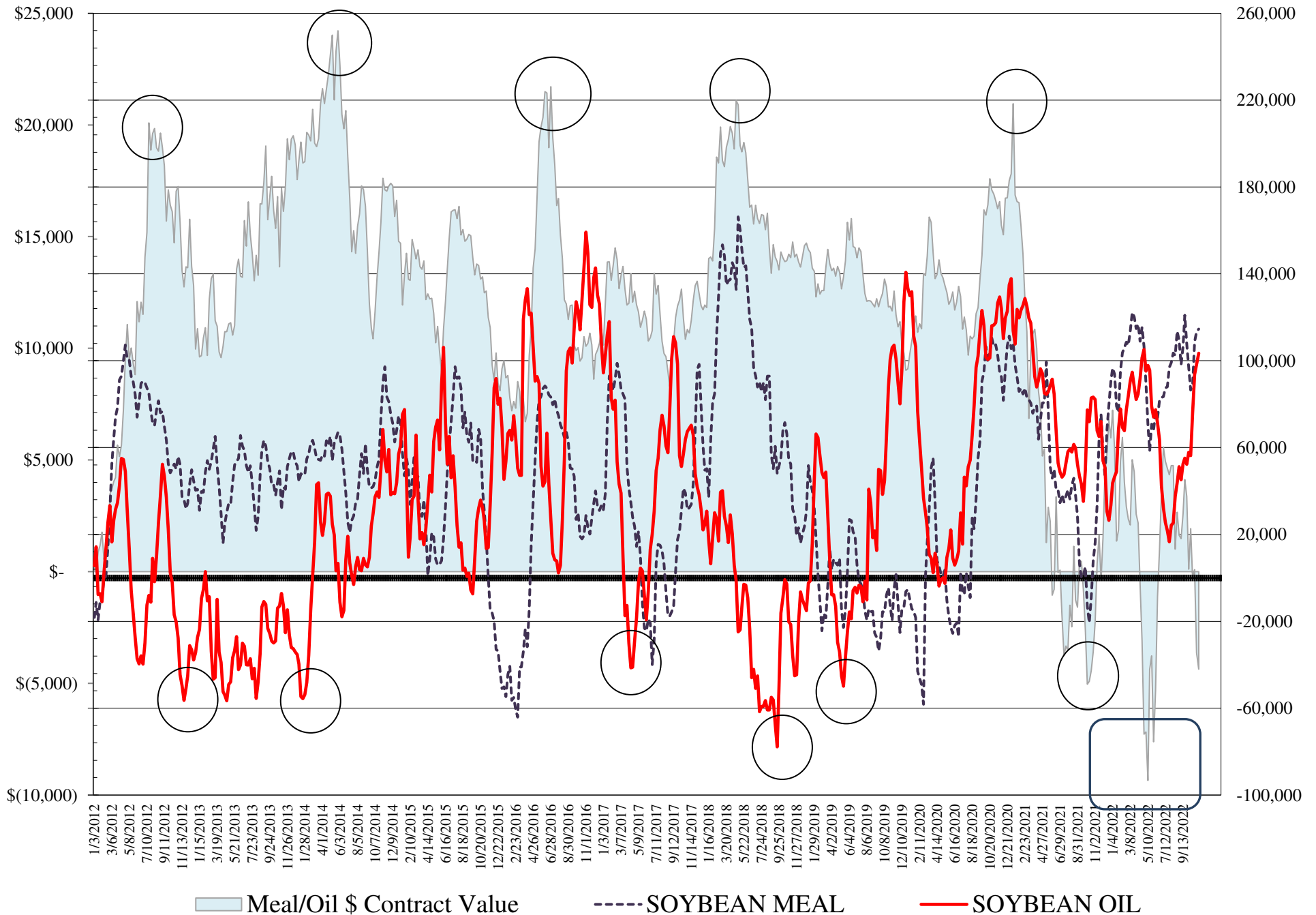
**COMMITMENT OF TRADERS**  
**FUTURES & OPTIONS NET POSITIONS**  
**AS OF 11/08/2022**  
(IN THOUSAND CONTRACTS)

	COMMERCIAL				(FUND) NON COMMERCIAL				(SPEC) NON-REPORTABLE			
	8-Nov	1-Nov	25-Oct	18-Oct	8-Nov	1-Nov	25-Oct	18-Oct	8-Nov	1-Nov	25-Oct	18-Oct
<b>WHEAT</b>												
Chicago	27.5	25.4	23.4	13.3	-22.1	-19.2	-17.2	-7.0	-5.4	-6.2	-6.3	-6.3
Kansas City	-19.6	-19.2	-20.6	-23.5	20.4	20.3	21.5	24.9	-0.8	-1.0	-0.8	-1.4
Minneapolis	-3.1	-4.6	-4.4	-5.1	5.1	6.1	5.9	6.2	-2.0	-1.5	-1.5	-1.2
All Wheat	4.8	1.6	-1.6	-15.3	3.5	7.2	10.2	24.1	-8.2	-8.8	-8.6	-8.8
<b>CORN</b>	-227.3	-268.8	-257.7	-235.5	276.1	321.2	312.7	298.5	-48.8	-52.4	-55.0	-63.1
<b>OATS</b>	0.0	-0.1	-0.2	-0.8	-0.6	-0.7	-0.6	0.0	0.5	0.8	0.8	0.8
<b>SOYBEANS</b>	-65.7	-64.8	-39.4	-18.7	93.7	94.2	62.8	46.7	-28.0	-29.3	-23.4	-28.0
<b>SOY OIL</b>	-115.8	-112.2	-106.4	-91.6	103.5	98.4	93.5	76.2	12.3	13.8	12.8	15.4
<b>SOY MEAL</b>	-143.3	-141.8	-136.2	-114.4	114.6	113.4	108.7	89.2	28.7	28.4	27.5	25.2

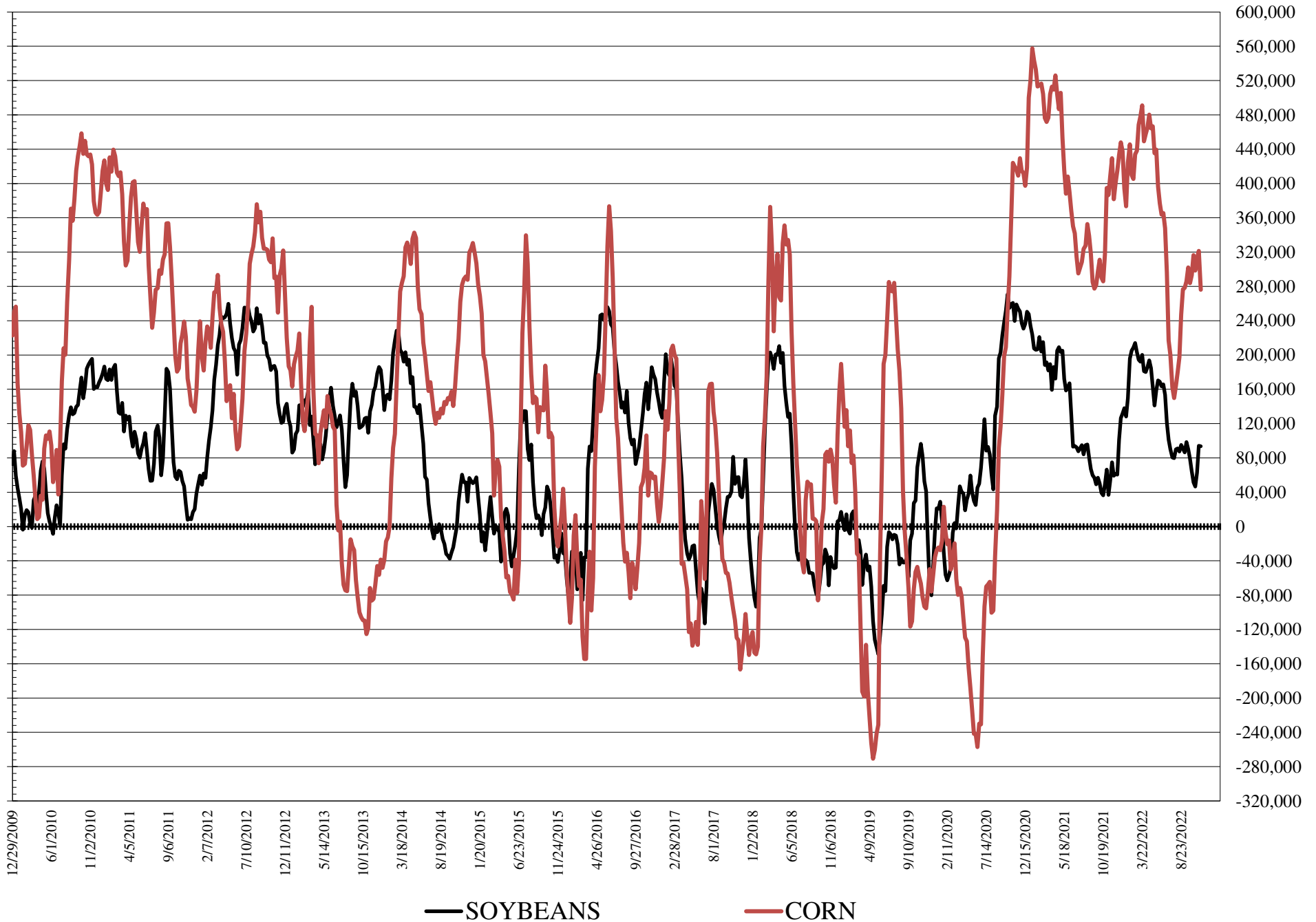
	TOTAL OPEN INTEREST				COMMERCIALS		% HELD BY TRADERS LARGE (FUNDS)		SMALL (NON-REP)	
	8-Nov	1-Nov	25-Oct	18-Oct	LONG	SHORT	LONG	SHORT	LONG	SHORT
<b>WHEAT</b>										
Chicago	443,703	435,024	411,948	404,388	35%	29%	19%	24%	8%	9%
Kansas City	172,714	179,185	174,982	174,916	41%	52%	23%	11%	12%	13%
Minneapolis	52,363	57,724	58,197	58,504	60%	65%	16%	6%	17%	21%
<b>CORN</b>	1,920,077	1,916,119	1,862,587	1,856,288	40%	52%	20%	5%	9%	12%
<b>OATS</b>	4,664	4,351	4,522	4,165						
<b>SOYBEANS</b>	703,484	669,123	721,646	847,777	47%	56%	21%	7%	7%	11%
<b>SOY OIL</b>	518,361	493,168	482,923	459,121	41%	63%	25%	5%	8%	5%
<b>SOY MEAL</b>	453,467	435,093	426,681	414,496	37%	69%	29%	4%	13%	6%

SOURCE: CFTC & FI

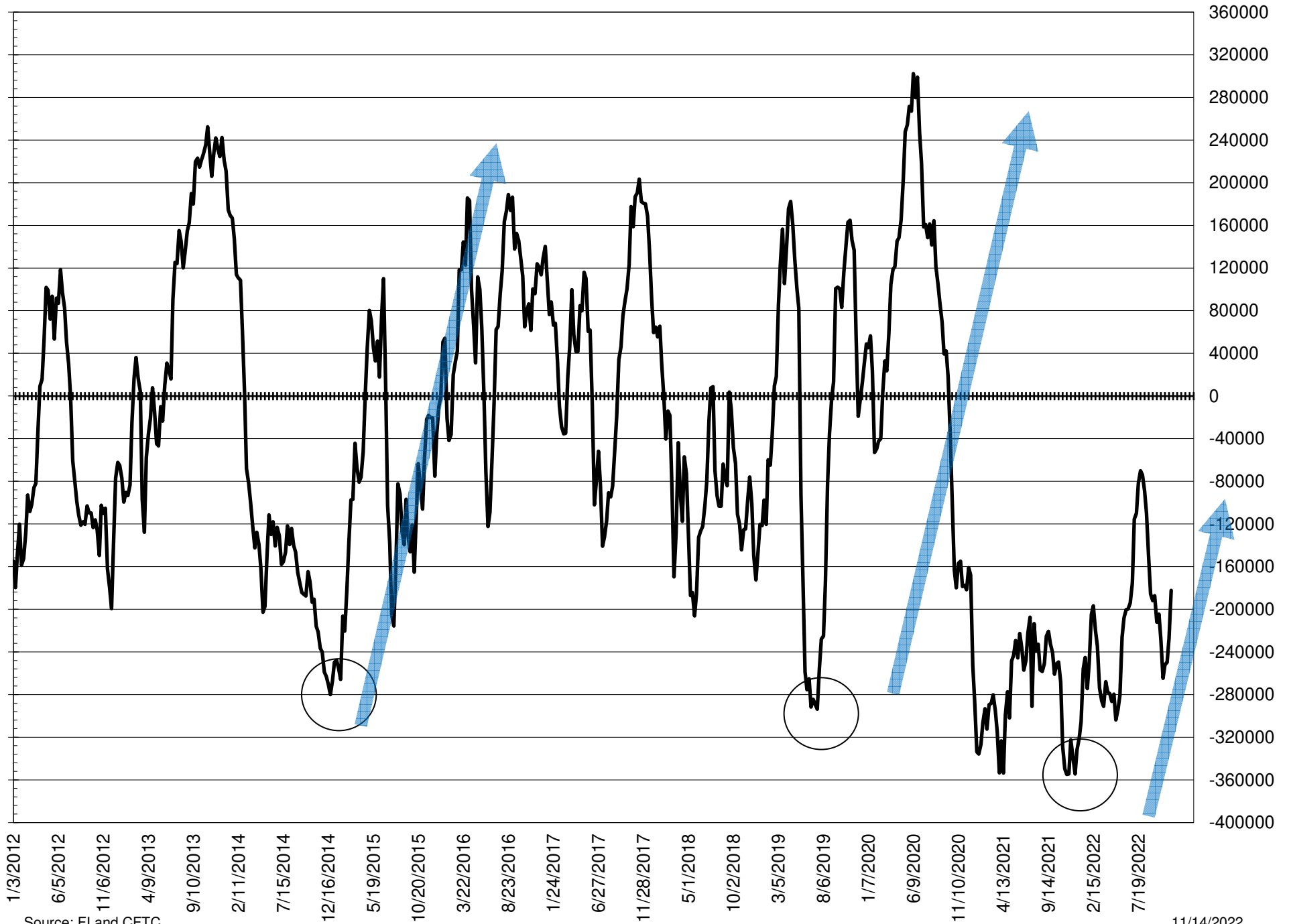
# NET POSITION FUTURES AND OPTIONS OF LARGE SPECULATORS IN SOYBEAN MEAL AND SOYBEAN OIL



# NET POSITION FUTURES AND OPTIONS OF LARGE SPECULATORS IN SOYBEANS AND CORN



# NET POSITION FUTURES AND OPTIONS SPREAD OF LARGE SPECULATORS IN SOYBEANS MINUS CORN



Source: FI and CFTC

11/14/2022



**DISAGGREGATED COMMITMENT OF TRADERS**  
**FUTURES & OPTIONS NET POSITIONS**  
**AS OF 11/08/2022**  
(IN THOUSAND CONTRACTS)

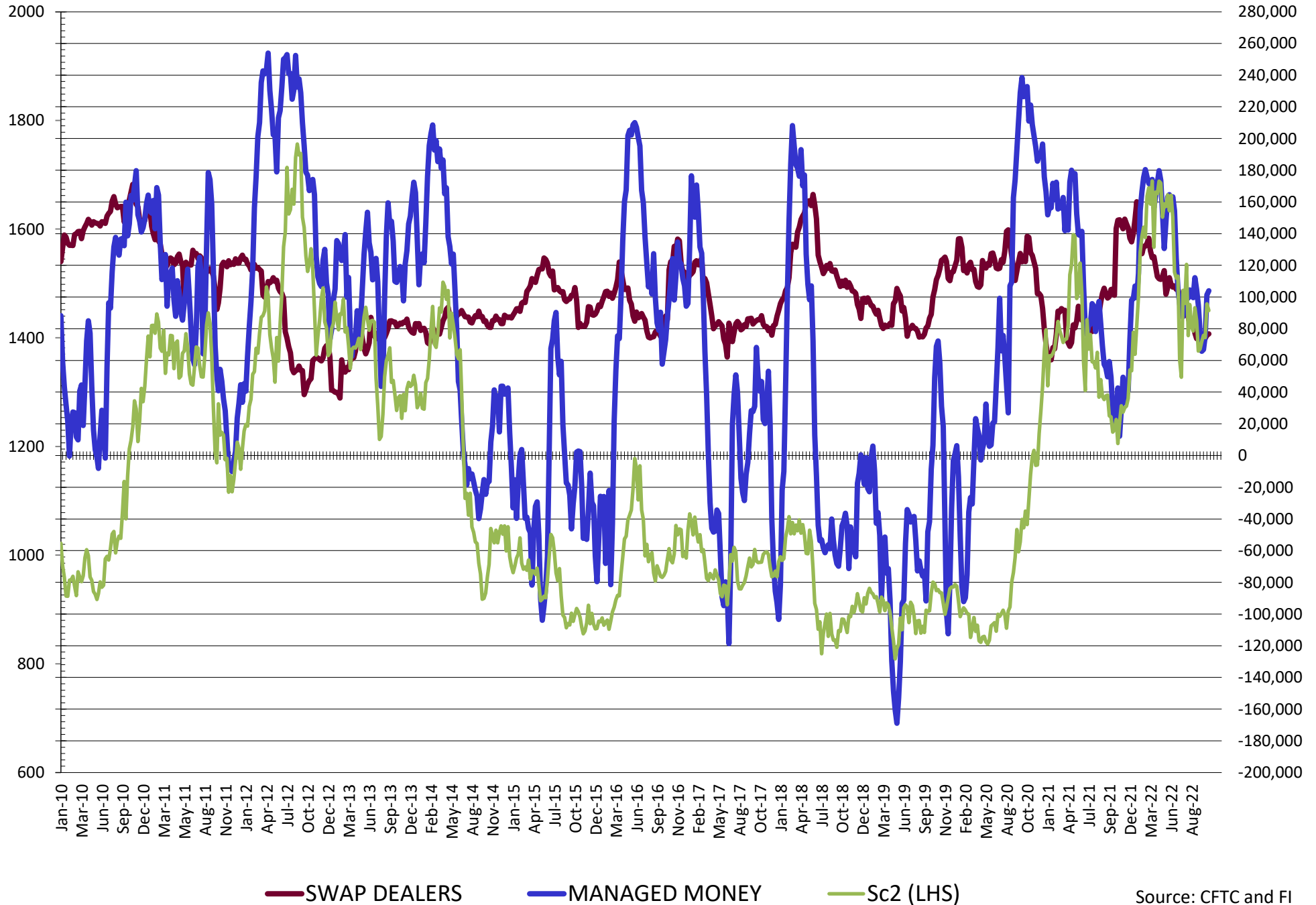
	PRODUCER / MERCHANT / PROCESSOR / USER				(INDEX/ETF) SWAP DEALERS				(CTA/CPO/OTHER UNREGISTERED) MANAGED MONEY			
	8-Nov	1-Nov	25-Oct	18-Oct	8-Nov	1-Nov	25-Oct	18-Oct	8-Nov	1-Nov	25-Oct	18-Oct
	WHEAT											
Chicago	(37.4)	(38.2)	(37.8)	(47.4)	64.9	63.6	61.2	60.7	(42.9)	(37.1)	(36.1)	(22.1)
Kansas City	(50.6)	(47.9)	(48.1)	(50.7)	31.0	28.6	27.5	27.1	24.4	23.4	24.6	26.3
Minneapolis	(5.0)	(5.7)	(5.4)	(5.9)	1.9	1.2	1.0	0.8	3.1	3.8	3.5	3.8
All Wheat	(93.1)	(91.8)	(91.4)	(104.0)	97.9	93.4	89.7	88.7	(15.4)	(9.9)	(7.9)	8.0
CORN	(460.7)	(490.6)	(476.4)	(455.3)	233.4	221.8	218.6	219.8	237.7	272.0	264.4	254.3
OATS	0.0	(0.1)	(0.2)	(1.0)	0.0	0.0	0.0	0.2	(1.2)	(1.3)	(1.2)	(0.8)
SOYBEANS	(142.4)	(140.7)	(113.4)	(90.8)	76.8	75.9	73.9	72.1	103.9	101.3	75.4	66.9
SOY OIL	(199.8)	(193.3)	(191.3)	(176.9)	84.0	81.1	85.0	85.4	105.2	100.1	95.2	75.0
SOY MEAL	(225.0)	(221.2)	(216.6)	(193.9)	81.7	79.5	80.4	79.5	95.4	93.4	86.0	70.8

	TOTAL OPEN INTEREST				OTHER REPORTABLE				NON REPORTABLE			
	8-Nov	1-Nov	25-Oct	18-Oct	8-Nov	1-Nov	25-Oct	18-Oct	8-Nov	1-Nov	25-Oct	18-Oct
	WHEAT											
Chicago	443,703	435,024	411,948	404,388	20.8	18.0	18.9	15.0	(5.4)	(6.2)	(6.3)	(6.3)
Kansas City	172,714	179,185	174,982	174,916	(4.0)	(3.2)	(3.1)	(1.4)	(0.8)	(1.0)	(0.8)	(1.4)
Minneapolis	52,363	57,724	58,197	58,504	2.0	2.2	2.4	2.4	(2.0)	(1.5)	(1.5)	(1.2)
All Wheat	668,780	671,933	645,127	637,808	18.9	17.1	18.1	16.1	(8.2)	(8.8)	(8.6)	(8.8)
CORN	1,920,077	1,916,119	1,862,587	1,856,288	38.4	49.3	48.4	44.3	(48.8)	(52.4)	(52.4)	(52.4)
OATS	4,664	4,351	4,522	4,165	0.6	0.6	0.6	0.8	0.5	0.8	0.8	0.8
SOYBEANS	703,484	669,123	721,646	847,777	(10.2)	(7.2)	(12.6)	(20.2)	(28.0)	(29.3)	(23.4)	(28.0)
SOY OIL	518,361	493,168	482,923	459,121	(1.7)	(1.8)	(1.6)	1.2	12.3	13.8	12.8	15.4
SOY MEAL	453,467	435,093	426,681	414,496	19.2	20.0	22.6	18.4	28.7	28.4	27.5	25.2

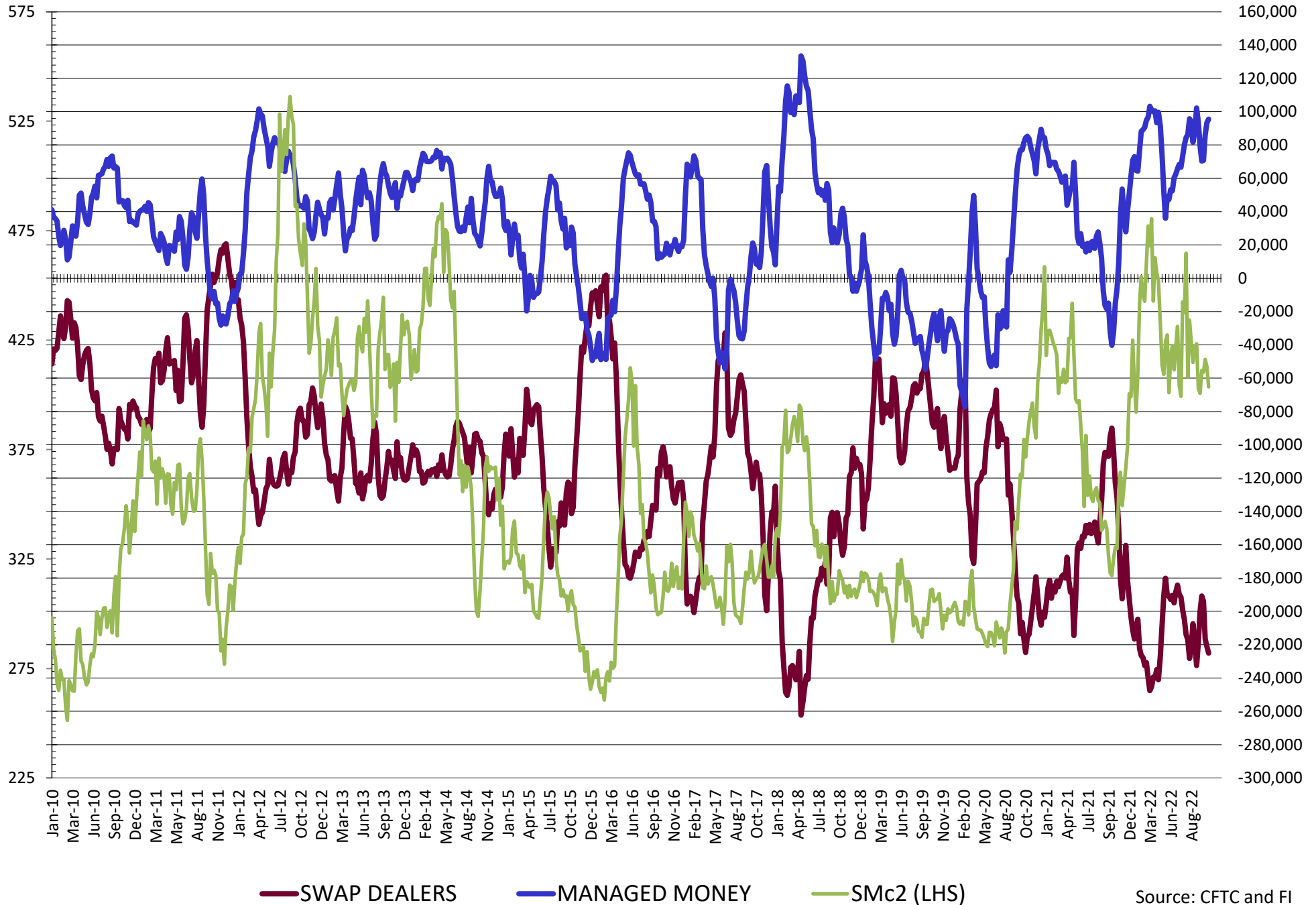
SOURCE: CFTC & FI



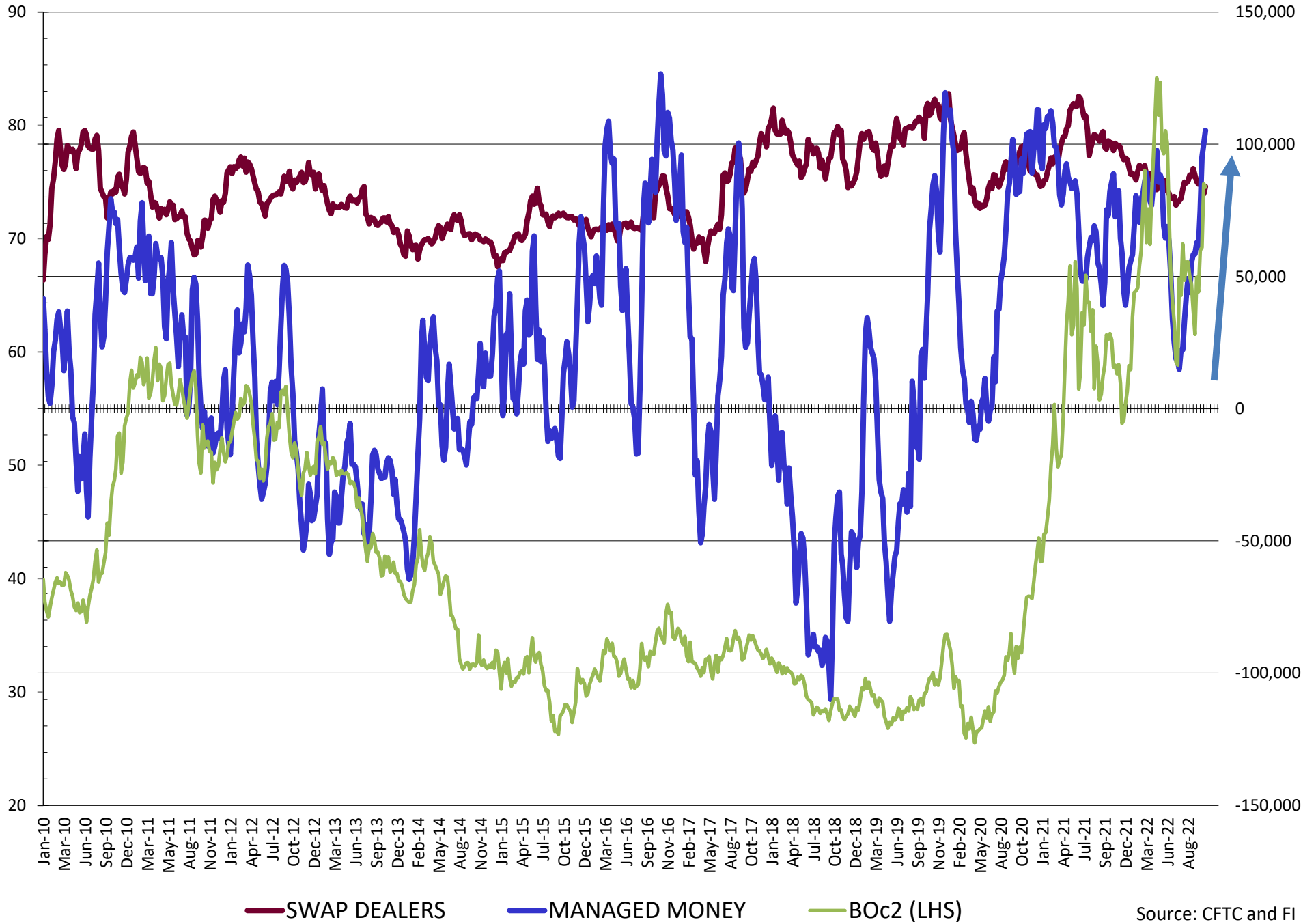
# NET POSITION FUTURES AND OPTIONS OF SWAP AND MANAGED FUNDS IN SOYBEANS



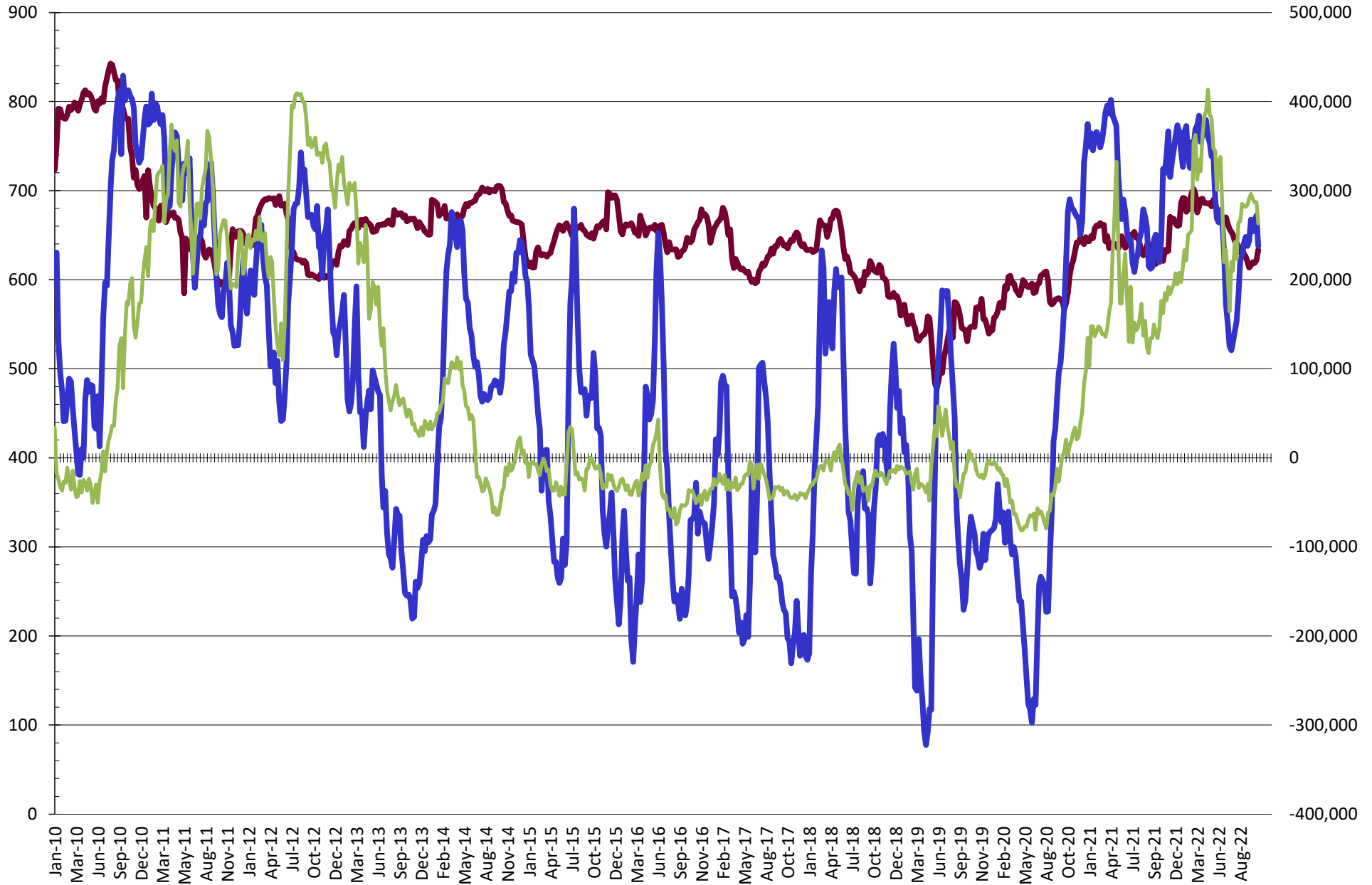
# NET POSITION FUTURES AND OPTIONS OF SWAP AND MANAGED FUNDS IN SOYBEAN MEAL



# NET POSITION FUTURES AND OPTIONS OF SWAP AND MANAGED FUNDS IN SOYBEAN OIL

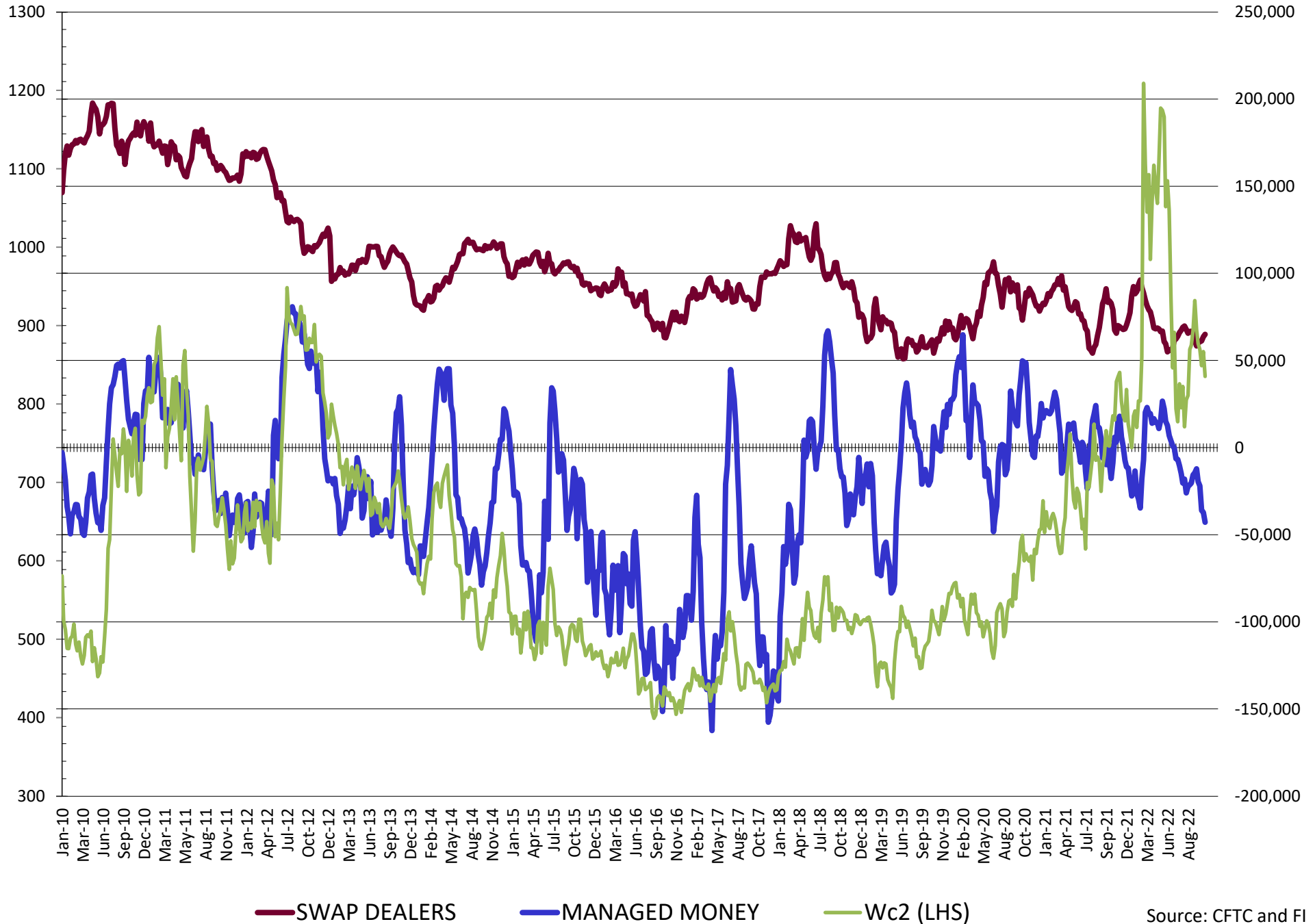


# NET POSITION FUTURES AND OPTIONS OF SWAP AND MANAGED FUNDS IN CORN

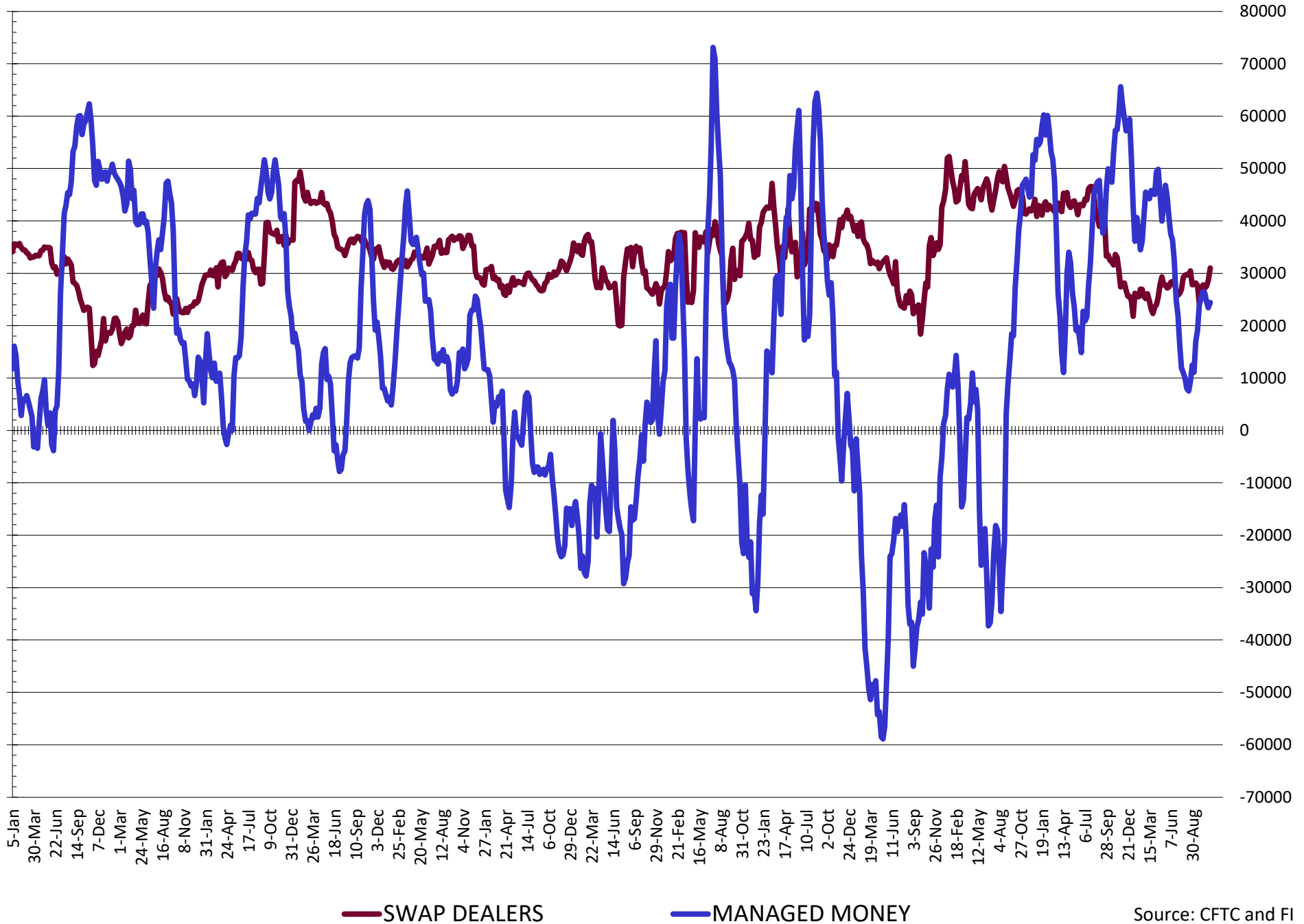


— SWAP DEALERS     
 — MANAGED MONEY     
 — Cc2 (LHS)

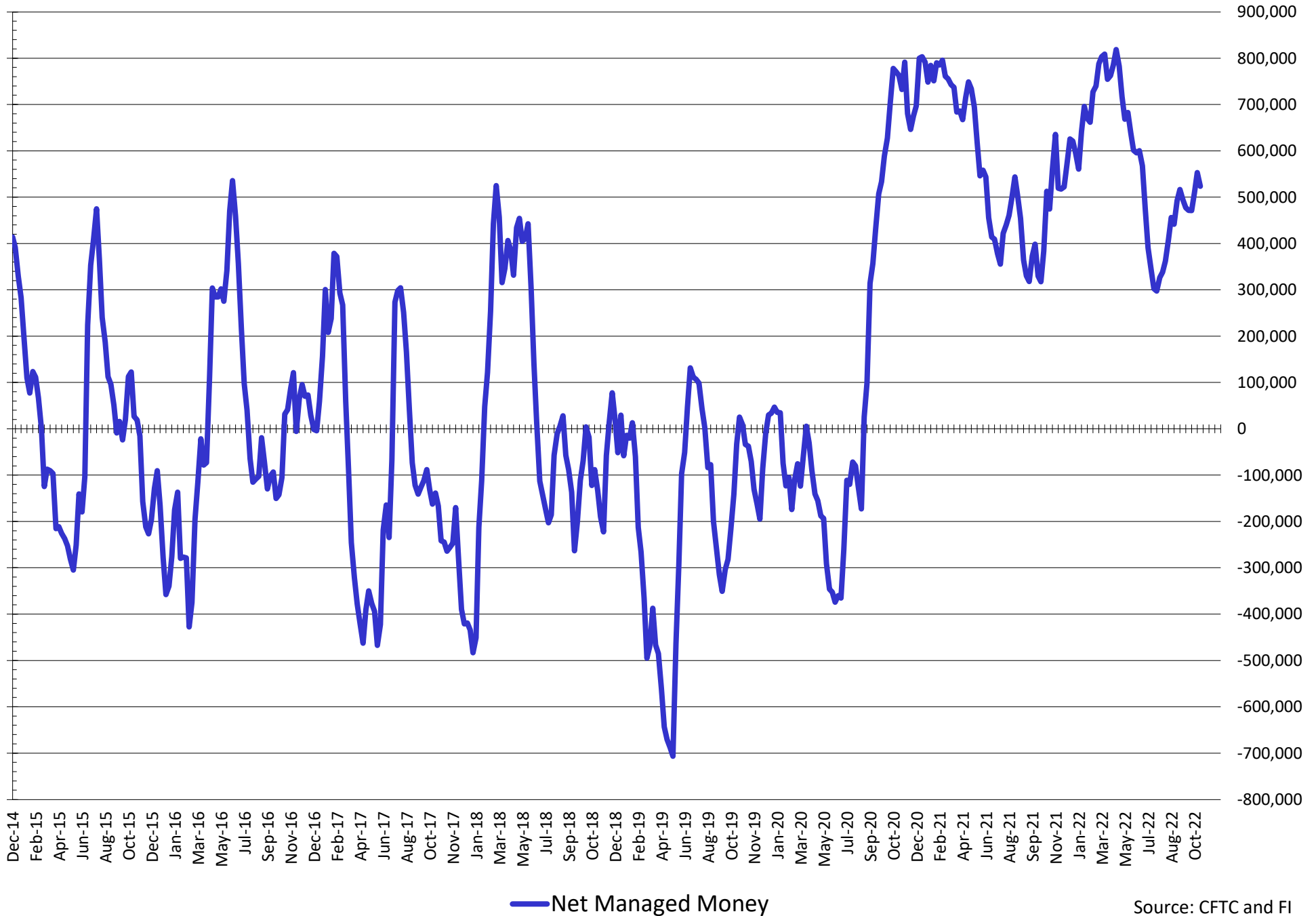
# NET POSITION FUTURES AND OPTIONS OF SWAP AND MANAGED FUNDS IN CHICAGO WHEAT



# NET POSITION FUTURES AND OPTIONS OF SWAP DEALERS AND MANAGED FUNDS IN KANSAS WHEAT



# NET POSITION FUTURES AND OPTIONS OF SWAP AND MANAGED FUNDS IN COMBINED SRW, HRW, CORN, SOYBEANS, SOYMEAL AND SOYOIL



**COMMITMENT OF TRADERS**  
**FUTURES & OPTIONS NET POSITIONS (INDEX BROKEN OUT)**  
**AS OF 11/08/2022**  
(IN THOUSAND CONTRACTS)

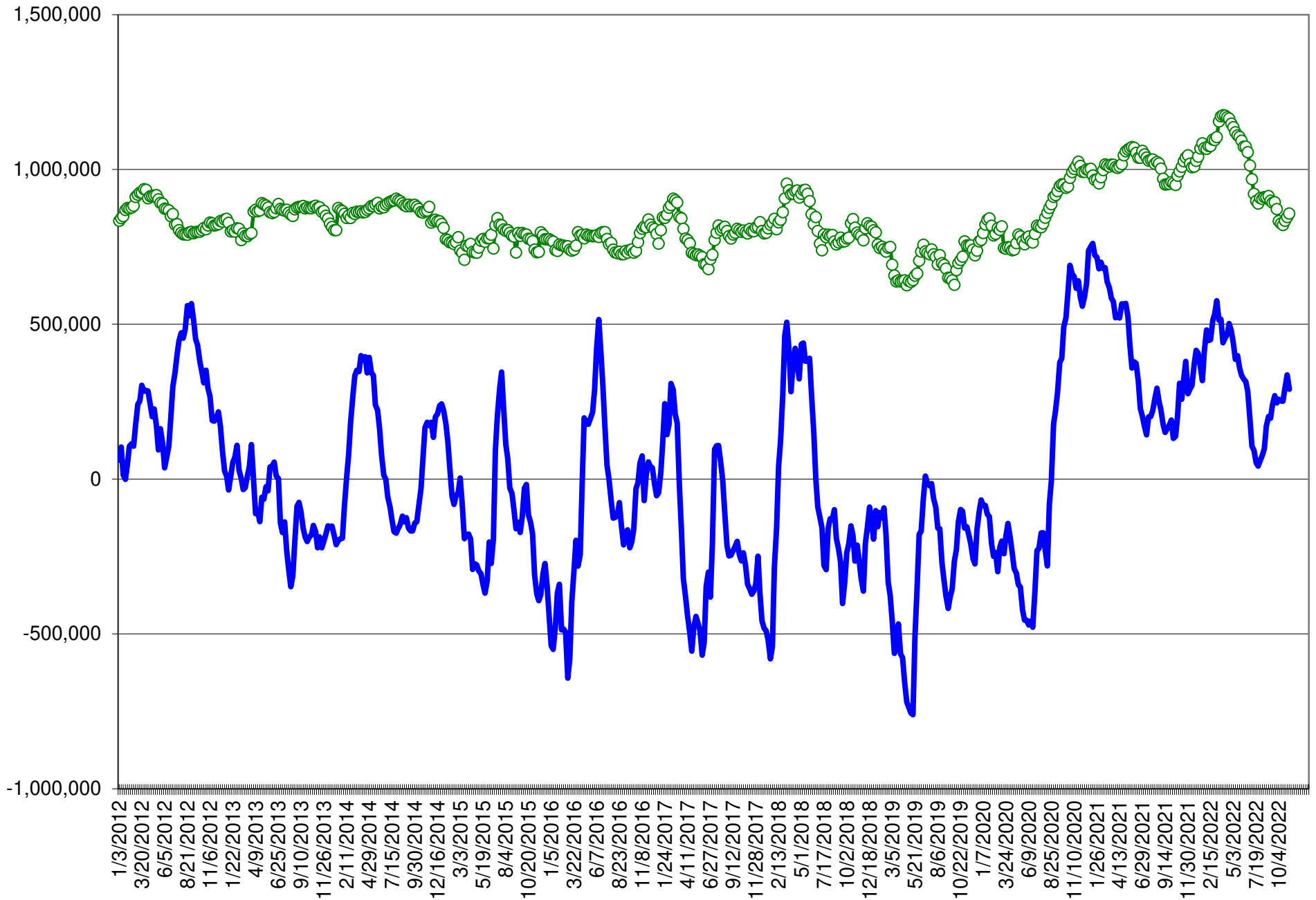
	COMMERCIAL				(FUND) NON COMMERCIAL				(SPEC) NON-REPORTABLE			
	8-Nov	1-Nov	25-Oct	18-Oct	8-Nov	1-Nov	25-Oct	18-Oct	8-Nov	1-Nov	25-Oct	18-Oct
	WHEAT											
Chicago	(45.1)	(46.7)	(45.7)	(56.4)	(58.5)	(52.4)	(50.6)	(41.5)	(5.4)	(6.2)	(6.3)	(6.3)
Kansas City	(51.8)	(51.7)	(52.0)	(55.0)	6.3	4.8	5.8	8.1	(0.8)	(1.0)	(0.8)	(1.4)
Minneapolis	-	-	-	-	-	-	-	-	-	-	-	-
All Wheat	(96.9)	(98.4)	(97.7)	(111.4)	(52.2)	(47.6)	(44.8)	(33.4)	(6.2)	(7.3)	(7.1)	(7.6)
CORN	(465.0)	(503.0)	(491.2)	(469.3)	153.2	196.7	184.7	176.2	(48.8)	(52.4)	(55.0)	(63.1)
OATS	-	-	-	-	-	-	-	-	-	-	-	-
SOYBEANS	(147.9)	(147.2)	(119.1)	(95.8)	55.8	57.2	26.9	10.6	(28.0)	(29.3)	(23.4)	(28.0)
SOY OIL	(183.3)	(178.0)	(172.0)	(156.8)	64.2	59.9	57.0	43.4	12.3	13.8	12.8	15.4
SOY MEAL	(212.4)	(209.0)	(203.0)	(180.6)	69.3	70.3	70.0	54.4	28.7	28.4	27.5	25.2

	TOTAL OPEN INTEREST				(INDEX) COMMERCIAL INDEX TRADERS				(INDEX) % NET OF TOTAL OPEN INTEREST			
	8-Nov	1-Nov	25-Oct	18-Oct	8-Nov	1-Nov	25-Oct	18-Oct	8-Nov	1-Nov	25-Oct	18-Oct
	WHEAT											
Chicago	443,703	435,024	411,948	404,388	109.0	105.4	102.5	104.2	24.6%	24.2%	24.9%	25.8%
Kansas City	172,714	179,185	174,982	174,916	46.3	47.9	47.0	48.3	26.8%	26.7%	26.9%	27.6%
Minneapolis	-	-	-	-	-	-	-	-	-	-	-	-
All Wheat	616,417	614,209	586,930	579,304	155.4	153.3	149.5	152.4	25.2%	25.0%	25.5%	26.3%
CORN	1,920,077	1,916,119	1,862,587	1,856,288	360.6	358.7	361.5	356.1	18.8%	18.7%	19.4%	19.2%
OATS	-	-	-	-	-	-	-	-	-	-	-	-
SOYBEANS	703,484	669,123	721,646	847,777	120.2	119.4	115.5	113.2	17.1%	17.8%	16.0%	13.3%
SOY OIL	518,361	493,168	482,923	459,121	106.8	104.3	102.2	98.0	20.6%	21.1%	21.2%	21.4%
SOY MEAL	453,467	435,093	426,681	414,496	114.5	110.4	105.4	100.9	25.2%	25.4%	24.7%	24.4%

SOURCE: CFTC & FI



# NET POSITION FUTURES AND OPTIONS OF SPECULATORS AND INDEX FUNDS IN COMBINED SRW, HRW, CORN, SOYBEANS, SOYMEAL AND SOYOIL



Source: CFTC and FI

○ Net Index

— Net Speculator

## Traditional Daily Estimate of Funds 11/8/22

	(Neg)-"Short"	Pos-"Long"			
Actual less Est.	(17.2)	2.3	25.6	3.7	(0.1)
	<b>Corn</b>	<b>Bean</b>	<b>Chi. Wheat</b>	<b>Meal</b>	<b>Oil</b>
<b>Actual</b>	301.6	87.8	(17.2)	121.2	100.0
9-Nov	(3.0)	5.0	(7.0)	(2.0)	3.0
10-Nov	(11.0)	(10.0)	(1.0)	(6.0)	3.0
11-Nov	3.0	9.0	4.0	2.0	4.0
14-Nov	(3.0)	(4.0)	2.0	(1.0)	(4.0)
15-Nov					
<b>FI Est. of Futures Only 11/8/22</b>	<b>287.6</b>	<b>87.8</b>	<b>(19.2)</b>	<b>114.2</b>	<b>106.0</b>
<b>FI Est. Futures &amp; Options</b>	<b>262.1</b>	<b>93.7</b>	<b>(24.0)</b>	<b>107.6</b>	<b>109.5</b>
Futures only record long "Traditional Funds"	547.7 1/26/2021	280.9 11/10/2020	86.5 8/7/2018	167.5 5/1/2018	160.2 11/1/2016
Futures only record short	(235.0) 6/9/2020	(118.3) 4/30/2019	(130.0) 4/25/2017	(49.5) 3/1/2016	(69.8) 9/18/2018
Futures and options record net long	557.6 1/12/2021	270.9 10/6/2020	64.8 8/7/2012	132.1 5/1/2018	159.2 1/1/2016
Futures and options record net short	(270.6) 4/26/2019	(132.0) 4/30/2019	(143.3) 4/25/2017	(64.1) 3/1/2016	(77.8) 9/18/2018

## Managed Money Daily Estimate of Funds 11/8/22

	Corn	Bean	Chi. Wheat	Meal	Oil
Latest CFTC Fut. Only	221.8	105.4	(43.5)	96.5	106.4
Latest CFTC F&O	237.7	103.9	(42.9)	95.4	105.2
FI Est. Managed Fut. Only	208	105	(46)	89	112
FI Est. Managed Money F&O	224	104	(45)	88	111

## Index Funds Latest Positions (as of last Tuesday)

Index Futures & Options	360.6	120.2	109.0	NA	106.8
Change From Previous Week	1.9	0.8	3.7	NA	2.5

Source: Reuters, CFTC & FI (FI est. are noted with latest date)

# Disclaimer

TO CLIENTS/PROSPECTS OF FUTURES INTERNATIONAL, SEE RISK DISCLOSURE BELOW:

THIS COMMUNICATION IS CONVEYED AS A SOLICITATION FOR ENTERING INTO A DERIVATIVES TRANSACTION.

Any trading recommendations and market or other information to Customer by Futures International (FI), although based upon information obtained from sources believed by FI to be reliable may not be accurate and may be changed without notice to customer. FI makes no guarantee as to the accuracy or completeness of any of the information or recommendations furnished to Customer. Customer understands that FI, its managers, employees and/or affiliates may have a position in commodity futures, options or other derivatives which may not be consistent with the recommendations furnished by FI to Customer.

The risk of trading futures and options and other derivatives involves a substantial risk of loss and is not suitable for all persons. In purchasing an option, the risk is limited to the premium paid, and all commissions and fees involved with the trade. When an option is shorted or written, the writer of the option has unlimited risk with respect to the option written. The use of options strategies such as a straddles and strangles involve multiple option positions and may substantially increase the amount of commissions and fees paid to execute the strategy. Option prices do not necessarily move in tandem with cash or futures prices. Each person must consider whether a particular trade, combination of trades or strategy is suitable for that person's financial means and objectives.

This material may include discussions of seasonal patterns, however, futures prices have already factored in the seasonal aspects of supply and demand, and seasonal patterns are no indication of future market trends. Finally, past performance is not indicative of future results.

This communication may contain links to third party websites which are not under the control of FI and FI is not responsible for their content. Products and services are offered only in jurisdictions where solicitation and sale are lawful, and in accordance with applicable laws and regulations in each such jurisdiction.