

CFTC COMMITMENT OF TRADERS REPORT

As of 11/15/2022

TRADITIONAL FUNDS net position changes

Wed to Tue, in 000 contracts

	Corn	Bean	Meal	Oil	Chi. Wheat	KC Wheat	Min Wheat
Futures Only	(48.6)	(11.0)	(16.5)	5.3	(5.3)	(2.6)	(3.4)
Futures & Options Combined	(52.0)	(12.1)	(17.0)	6.6	(4.9)	(2.4)	(3.3)

TRADITIONAL COMMERCIAL net position changes

	Corn	Bean	Meal	Oil	Chi. Wheat	KC Wheat	Min Wheat
Futures Only	42.3	11.9	23.3	(8.0)	5.6	2.2	3.1
Futures & Options Combined	40.8	13.1	24.0	(9.2)	5.6	2.1	3.0

MANAGED MONEY net position changes

	Corn	Bean	Meal	Oil	Chi. Wheat	KC Wheat	Min Wheat
Futures Only	(56.0)	(9.8)	(20.4)	4.7	(4.1)	(3.2)	(2.9)
Futures & Options Combined	(60.8)	(10.9)	(19.7)	5.2	(3.9)	(3.2)	(2.9)

SWAP DEALERS net position changes

	Corn	Bean	Meal	Oil	Chi. Wheat	KC Wheat	Min Wheat
Futures Only	5.1	5.2	3.3	(2.0)	1.3	1.5	(0.2)
Futures & Options Combined	4.7	5.3	3.7	(1.5)	1.7	1.5	(0.3)

PRODUCERS/END USERS net position changes

	Corn	Bean	Meal	Oil	Chi. Wheat	KC Wheat	Min Wheat
Futures Only	37.2	6.7	20.0	(6.0)	4.3	0.6	3.3
Futures & Options Combined	36.1	7.8	20.3	(7.7)	3.8	0.6	3.3

INDEX net position changes

	Corn	Bean	Meal	Oil	Chi. Wheat	KC Wheat	Min Wheat
Futures & Options Combined	0.8	5.3	2.6	1.9	(2.0)	0.5	NA

SUPPLEMENTAL NON-COMMERCIAL net position changes

	Corn	Bean	Meal	Oil	Chi. Wheat	KC Wheat	Min Wheat
Futures & Options Combined	(49.6)	(11.5)	(17.9)	4.7	(2.0)	(2.6)	NA

OPEN INTEREST net position changes

Wed to Tue, in 000 contracts

	Corn	Bean	Meal	Oil	Chi. Wheat	KC Wheat	Min Wheat
Futures Only	(62.9)	5.1	(10.1)	15.4	(0.8)	0.4	(3.7)
Futures & Options Combined	(68.9)	8.2	(12.5)	18.2	4.7	1.3	(3.5)

Source: CFTC and FI

Wed to Tue, in 000 contracts

11/20/2022

**COMMITMENT OF TRADERS
FUTURES ONLY NET POSITIONS
AS OF 11/15/2022
(IN THOUSAND CONTRACTS)**

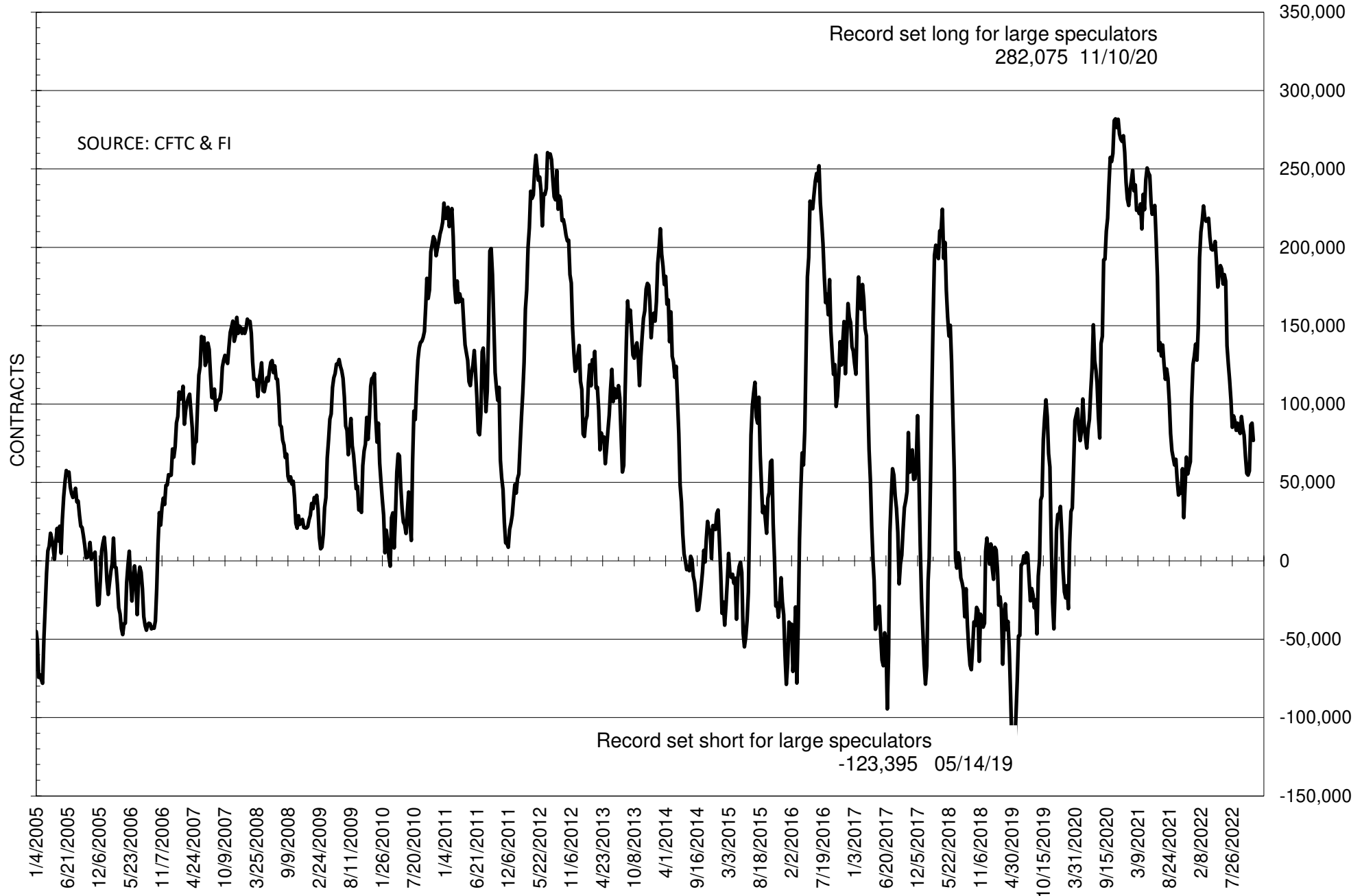
	COMMERCIAL				(FUND) NON COMMERCIAL				(SPEC) NON-REPORTABLE			
	15-Nov	8-Nov	1-Nov	25-Oct	15-Nov	8-Nov	1-Nov	25-Oct	15-Nov	8-Nov	1-Nov	25-Oct
	WHEAT											
Chicago	29.3	23.7	22.5	19.9	-22.5	-17.2	-15.8	-12.9	-6.8	-6.5	-6.7	-7.0
Kansas City	-17.3	-19.5	-18.9	-20.3	18.0	20.6	20.3	21.6	-0.7	-1.1	-1.5	-1.4
Minneapolis	-0.1	-3.2	-4.5	-4.5	1.9	5.3	6.1	6.0	-1.8	-2.1	-1.6	-1.6
All Wheat	11.9	1.0	-0.9	-4.8	-2.6	8.7	10.7	14.8	-9.3	-9.7	-9.8	-9.9
CORN	-211.9	-254.2	-286.8	-273.6	252.9	301.6	340.8	329.8	-41.0	-47.4	-54.0	-56.1
OATS	0.0	0.0	-0.1	-0.3	-0.5	-0.5	-0.6	-0.5	0.6	0.5	0.7	0.8
SOYBEANS	-49.0	-61.0	-57.9	-35.3	76.8	87.8	86.5	57.4	-27.8	-26.8	-28.6	-22.1
SOY OIL	-120.8	-112.8	-111.1	-106.0	105.3	100.0	97.1	93.2	15.5	12.8	14.0	12.8
SOY MEAL	-124.3	-147.6	-145.3	-141.2	104.7	121.2	119.5	116.1	19.5	26.4	25.8	25.1

Oats positions thin to be reported

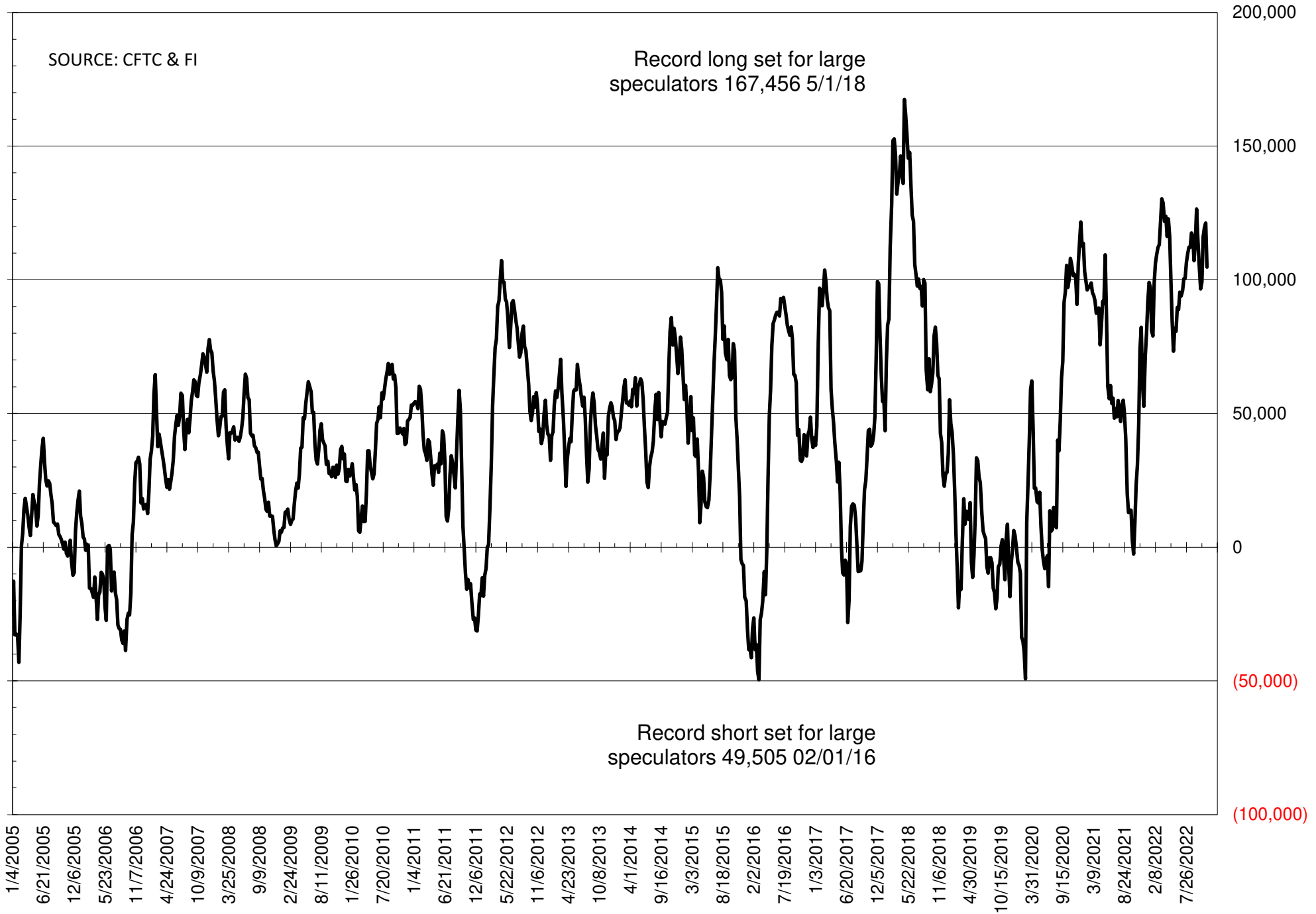
	TOTAL OPEN INTEREST				NEARBY FUTURES PRICE					15-Nov-22 LAST REPORTED % HELD BY TRADERS			
	15-Nov	8-Nov	1-Nov	25-Oct	Z/F Latest	Z/F 15-Nov	Z/F 8-Nov	Z/F 1-Nov	X/Z 25-Oct	LARGE FUND		SMALL	
										LONG	SHORT	LONG	SHORT
WHEAT													
Chicago	350091	350843	333061	324137	803.25	828.25	827.75	902.50	834.75	0%	32%	0%	11%
Kansas City	155780	155333	160095	158382	934.25	963.00	945.75	990.00	934.50	0%	13%	0%	14%
Minneapolis	46479	50165	55270	55765	952.75	974.00	950.25	987.25	952.25	0%	7%	0%	23%
CORN	1421555	1484427	1472517	1445842	667.75	666.75	667.50	697.75	686.25	0%	9%	0%	12%
OATS	4413	4558	4228	4421	396.25	398.00	380.75	399.50	357.50	0%	27%	0%	26%
SOYBEANS	616094	611011	584073	651685	1428.25	1457.25	1446.50	1447.75	1382.00	23%	11%	8%	12%
SOY OIL	463079	447632	430748	426276	72.74	76.98	75.03	73.37	72.28	0%	7%	0%	6%
SOY MEAL	400222	410292	391398	388147	410.40	409.90	419.30	424.80	415.60	0%	5%	0%	7%

SOURCE: CFTC & FI

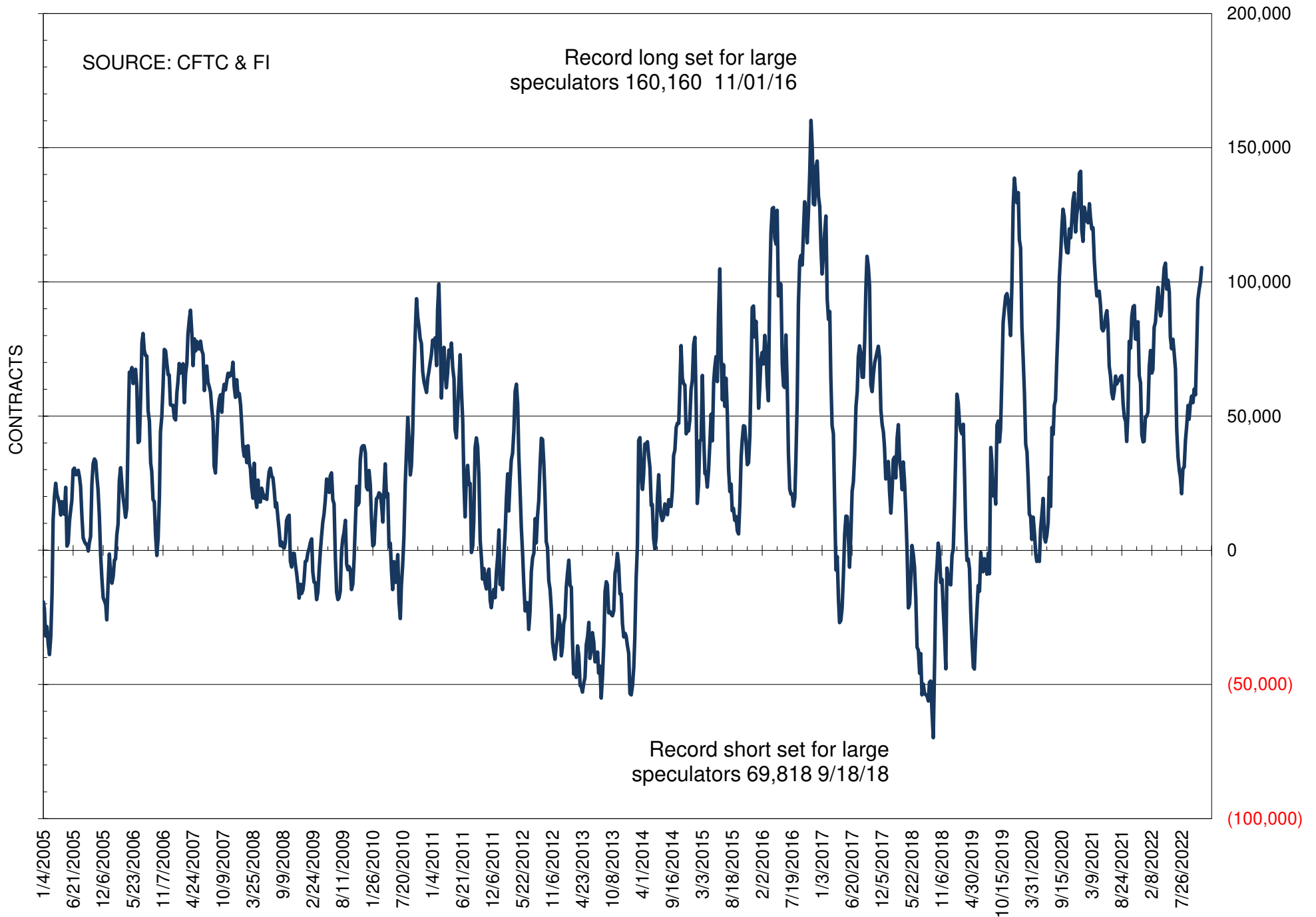
NET POSITION OF FUTURES ONLY LARGE SPECS IN SOYBEANS



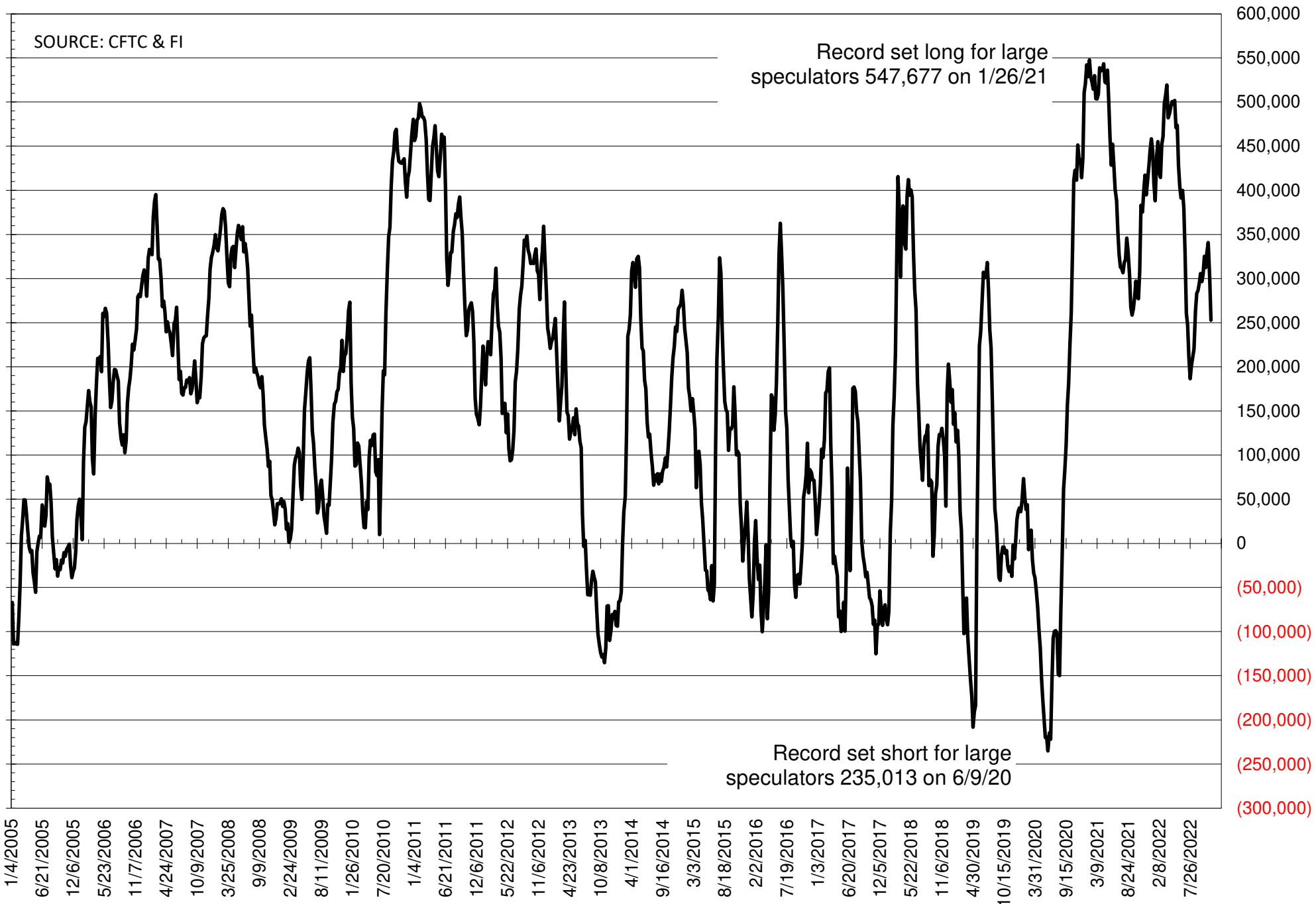
NET POSITION OF FUTURES ONLY LARGE SPECS IN SOYMEAL



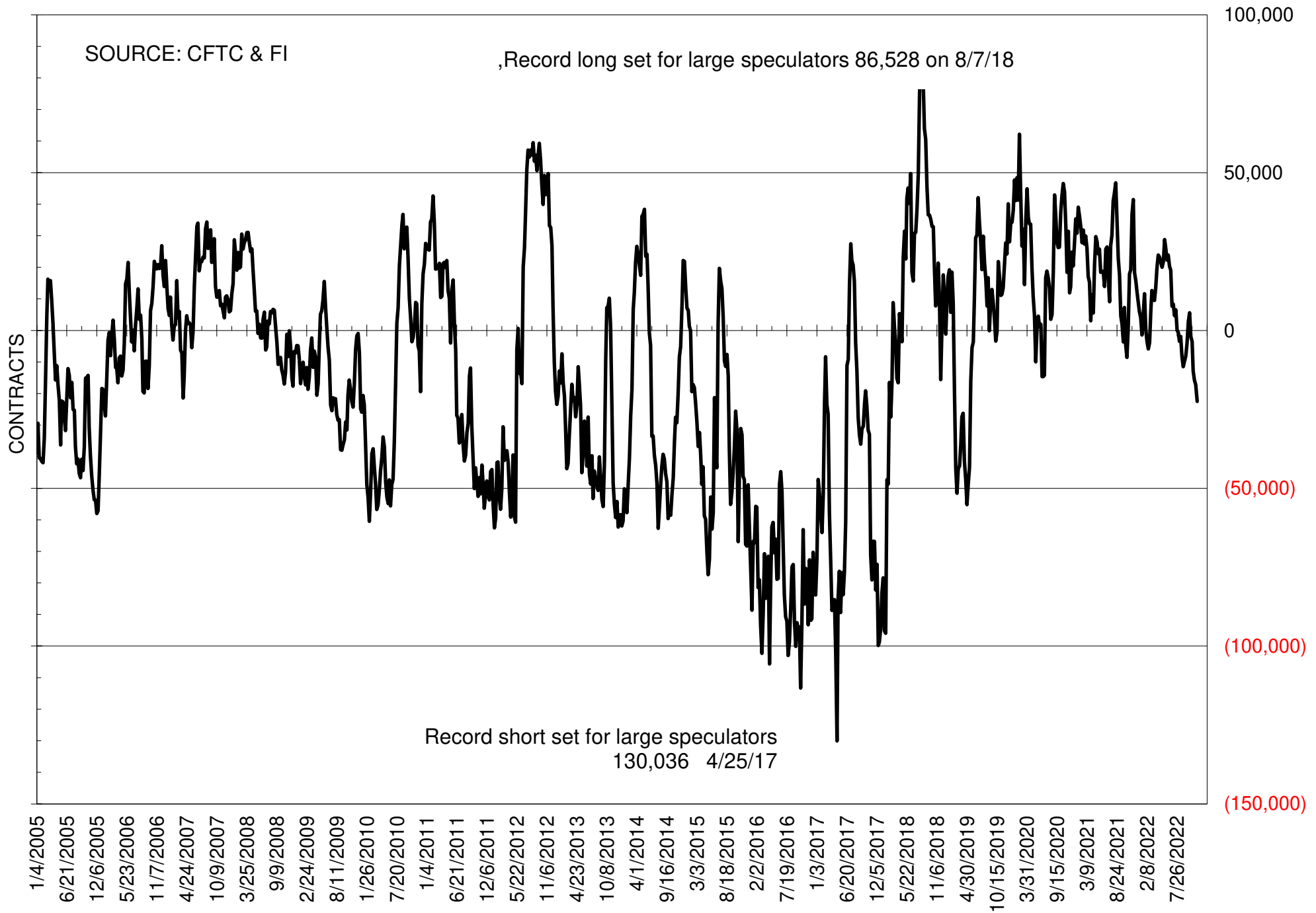
NET POSITION OF FUTURES ONLY LARGE SPECS IN SOYOIL



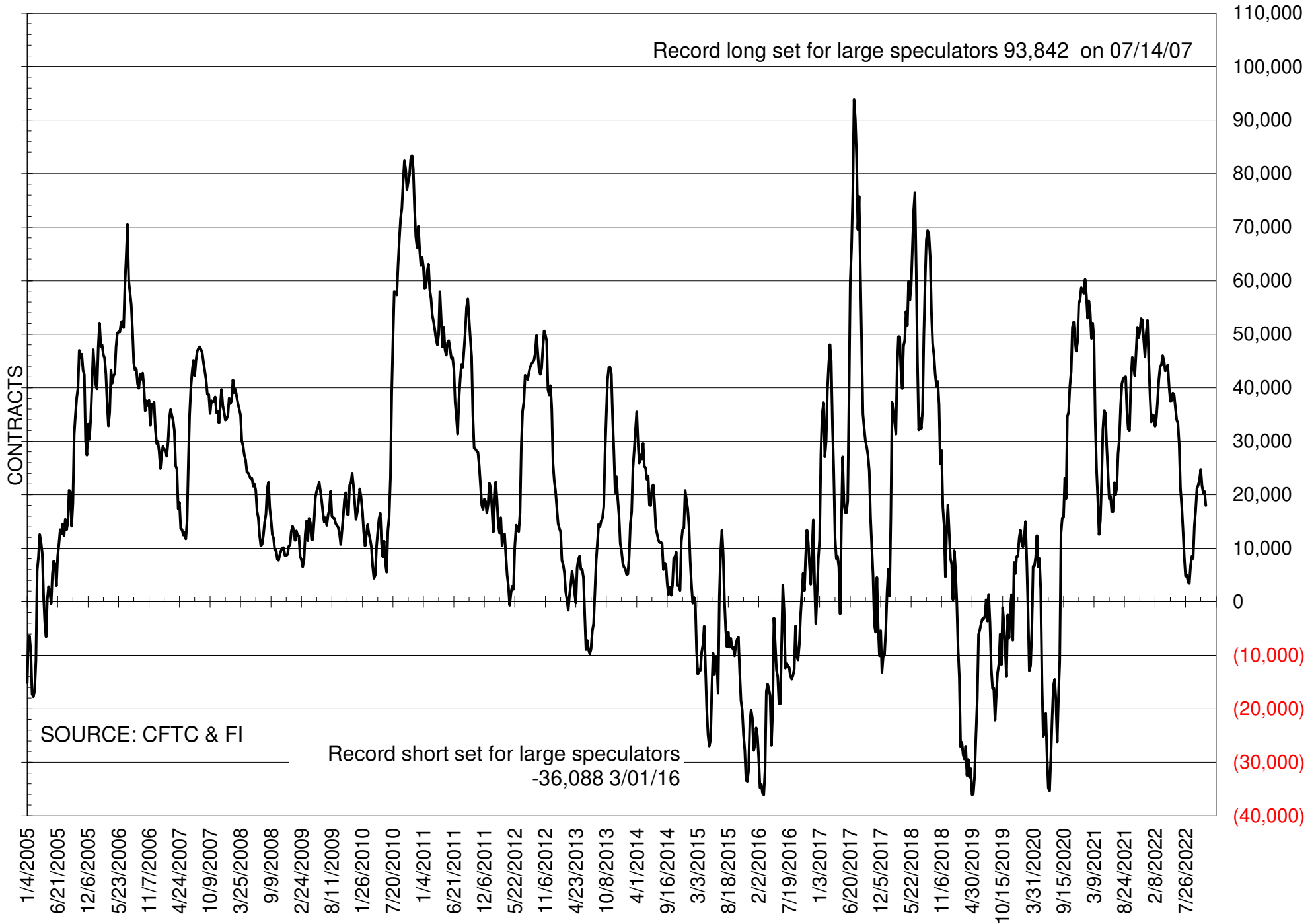
NET POSITION OF LARGE SPECULATORS IN CORN



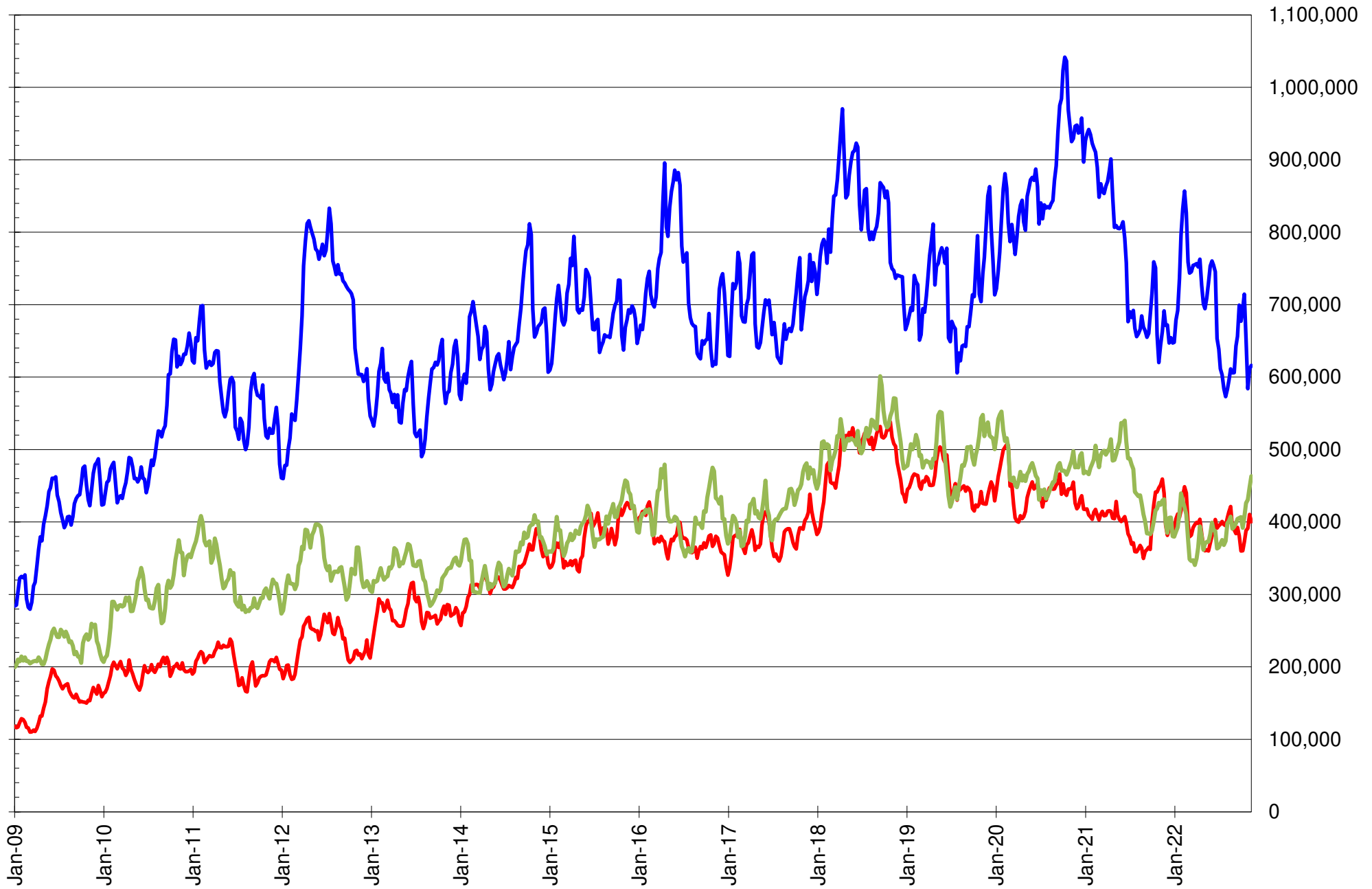
NET POSITION OF FUTURES ONLY LARGE SPECS IN CHICAGO WHEAT



NET POSITION OF LARGE SPECULATORS IN KANSAS CITY WHEAT



TOTAL OPEN INTEREST IN SOYBEANS, MEAL AND OIL, FUTURES ONLY



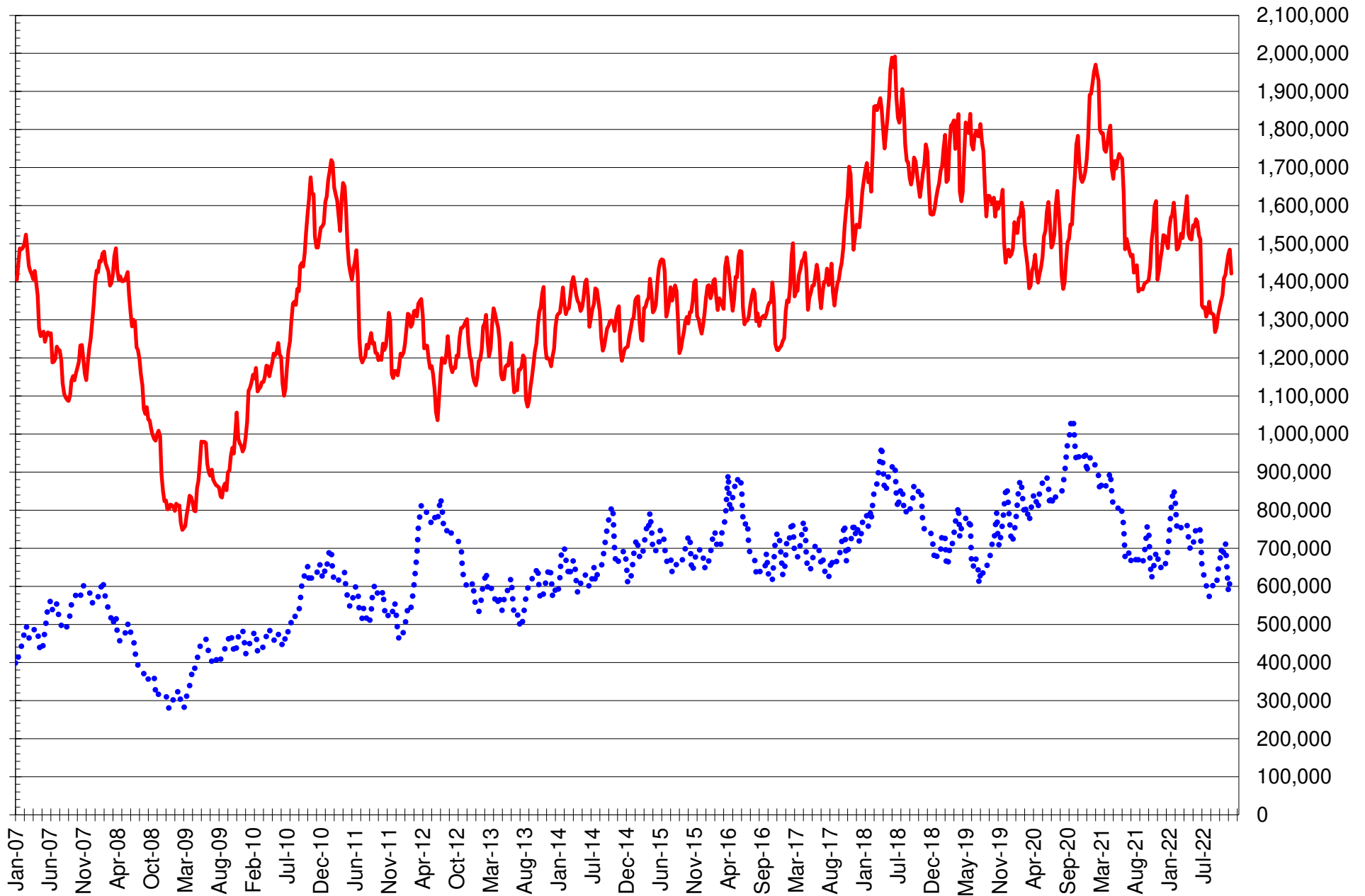
SOURCE: CFTC & FI

— SOYBEANS

— SOYBEAN MEAL

— SOYBEAN OIL

TOTAL OPEN INTEREST IN CORN AND SOYBEANS, FUTURES ONLY



SOURCE: CFTC & FI

— CORN

..... SOYBEANS

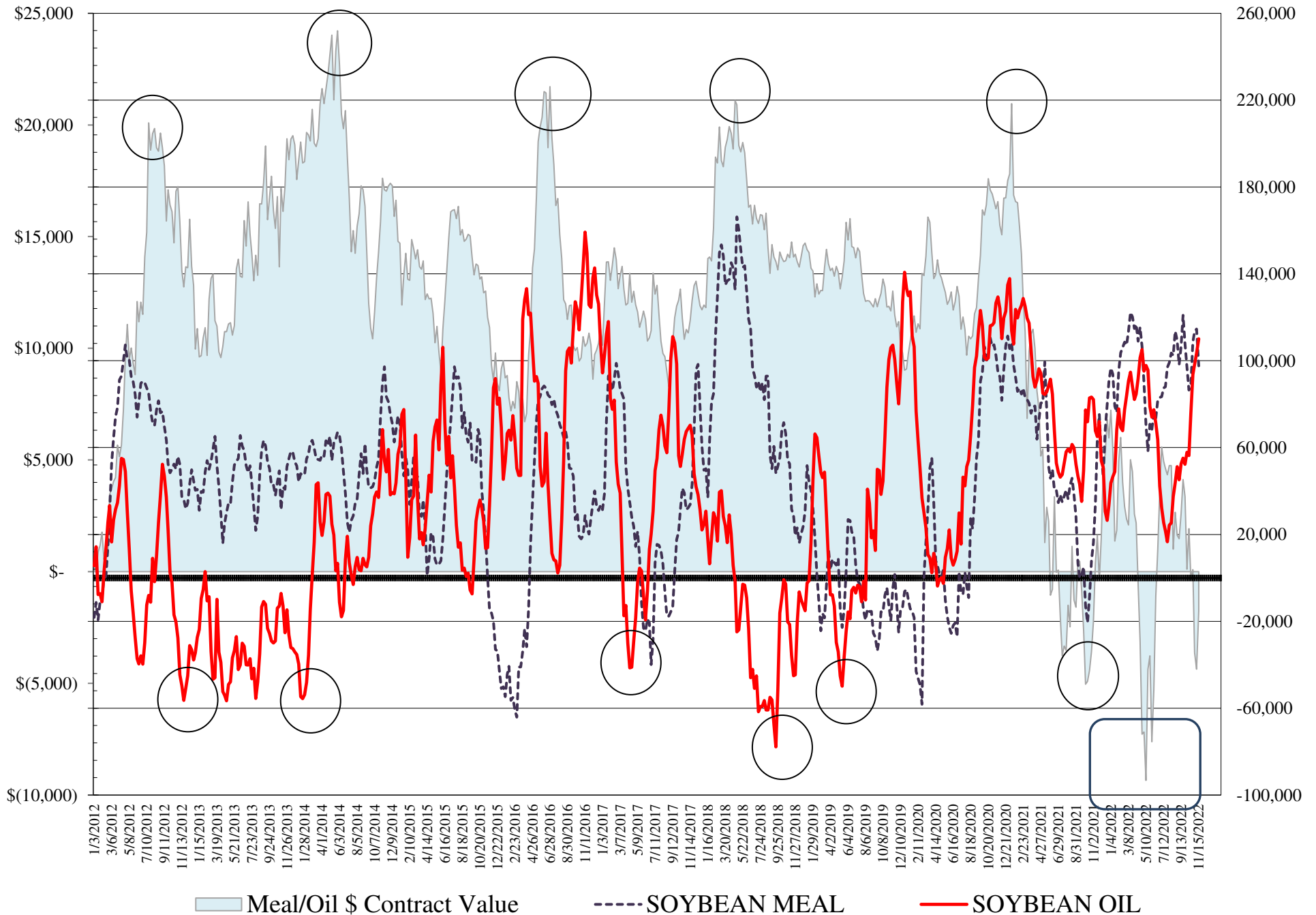
COMMITMENT OF TRADERS
FUTURES & OPTIONS NET POSITIONS
AS OF 11/15/2022
(IN THOUSAND CONTRACTS)

	COMMERCIAL				(FUND) NON COMMERCIAL				(SPEC) NON-REPORTABLE			
	15-Nov	8-Nov	1-Nov	25-Oct	15-Nov	8-Nov	1-Nov	25-Oct	15-Nov	8-Nov	1-Nov	25-Oct
WHEAT												
Chicago	33.1	27.5	25.4	23.4	-26.9	-22.1	-19.2	-17.2	-6.1	-5.4	-6.2	-6.3
Kansas City	-17.6	-19.6	-19.2	-20.6	18.0	20.4	20.3	21.5	-0.5	-0.8	-1.0	-0.8
Minneapolis	-0.1	-3.1	-4.6	-4.4	1.8	5.1	6.1	5.9	-1.7	-2.0	-1.5	-1.5
All Wheat	15.5	4.8	1.6	-1.6	-7.1	3.5	7.2	10.2	-8.3	-8.2	-8.8	-8.6
CORN	-186.5	-227.3	-268.8	-257.7	224.0	276.1	321.2	312.7	-37.6	-48.8	-52.4	-55.0
OATS	0.0	0.0	-0.1	-0.2	-0.6	-0.6	-0.7	-0.6	0.6	0.5	0.8	0.8
SOYBEANS	-52.6	-65.7	-64.8	-39.4	81.6	93.7	94.2	62.8	-29.0	-28.0	-29.3	-23.4
SOY OIL	-125.0	-115.8	-112.2	-106.4	110.1	103.5	98.4	93.5	15.0	12.3	13.8	12.8
SOY MEAL	-119.3	-143.3	-141.8	-136.2	97.6	114.6	113.4	108.7	21.8	28.7	28.4	27.5

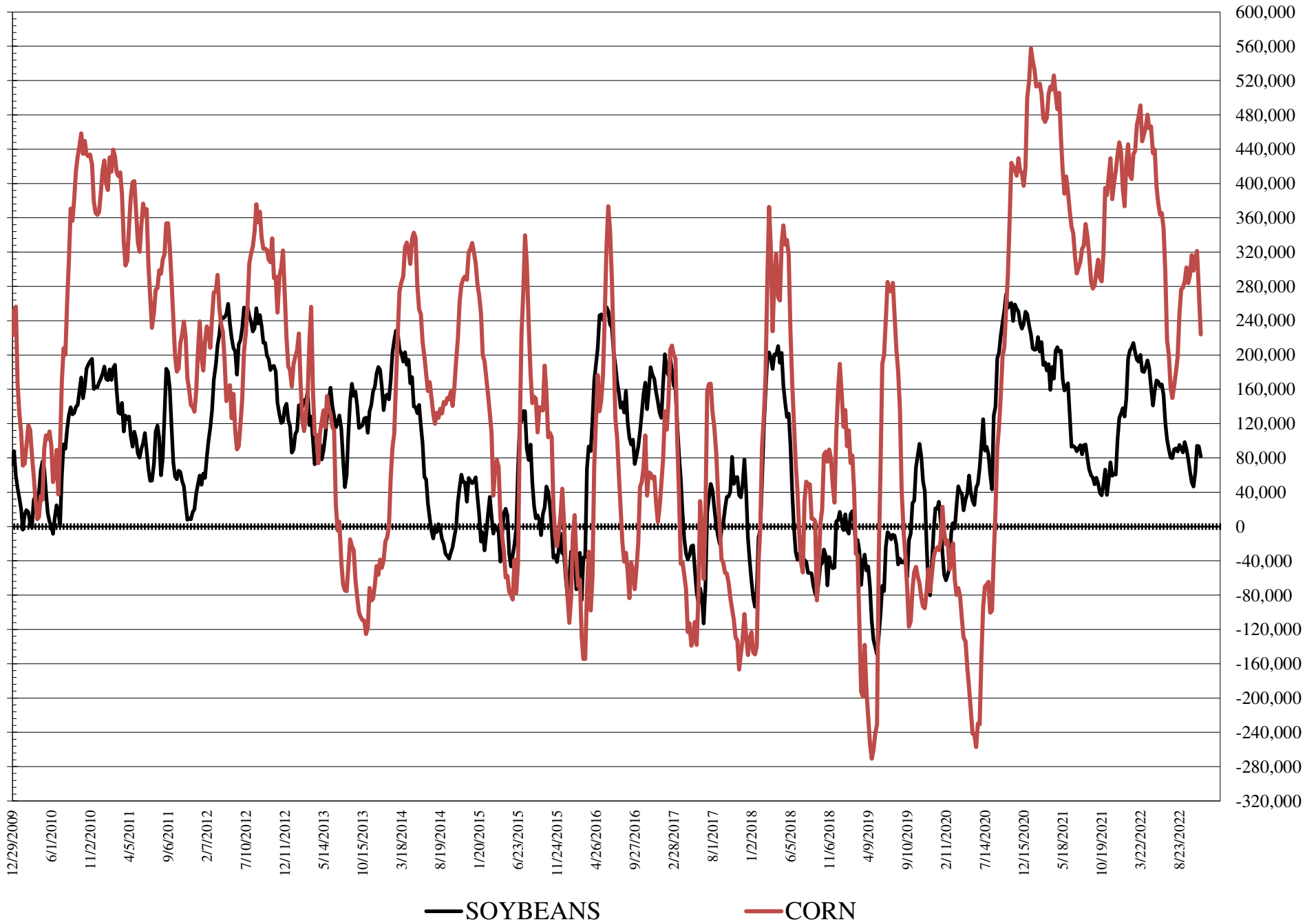
	TOTAL OPEN INTEREST				COMMERCIALS		% HELD BY TRADERS LARGE (FUNDS)		SMALL (NON-REP)		
	15-Nov	8-Nov	1-Nov	25-Oct	LONG	SHORT	LONG	SHORT	LONG	SHORT	
WHEAT											
Chicago	448,452	443,703	435,024	411,948		36%	29%	18%	24%	8%	9%
Kansas City	173,978	172,714	179,185	174,982		43%	53%	22%	12%	13%	13%
Minneapolis	48,903	52,363	57,724	58,197		62%	62%	11%	7%	19%	23%
CORN	1,851,206	1,920,077	1,916,119	1,862,587		42%	52%	18%	6%	10%	12%
OATS	4,523	4,664	4,351	4,522							
SOYBEANS	711,647	703,484	669,123	721,646		48%	55%	19%	8%	8%	12%
SOY OIL	536,578	518,361	493,168	482,923		41%	64%	26%	5%	8%	5%
SOY MEAL	440,919	453,467	435,093	426,681		41%	68%	27%	5%	12%	7%

SOURCE: CFTC & FI

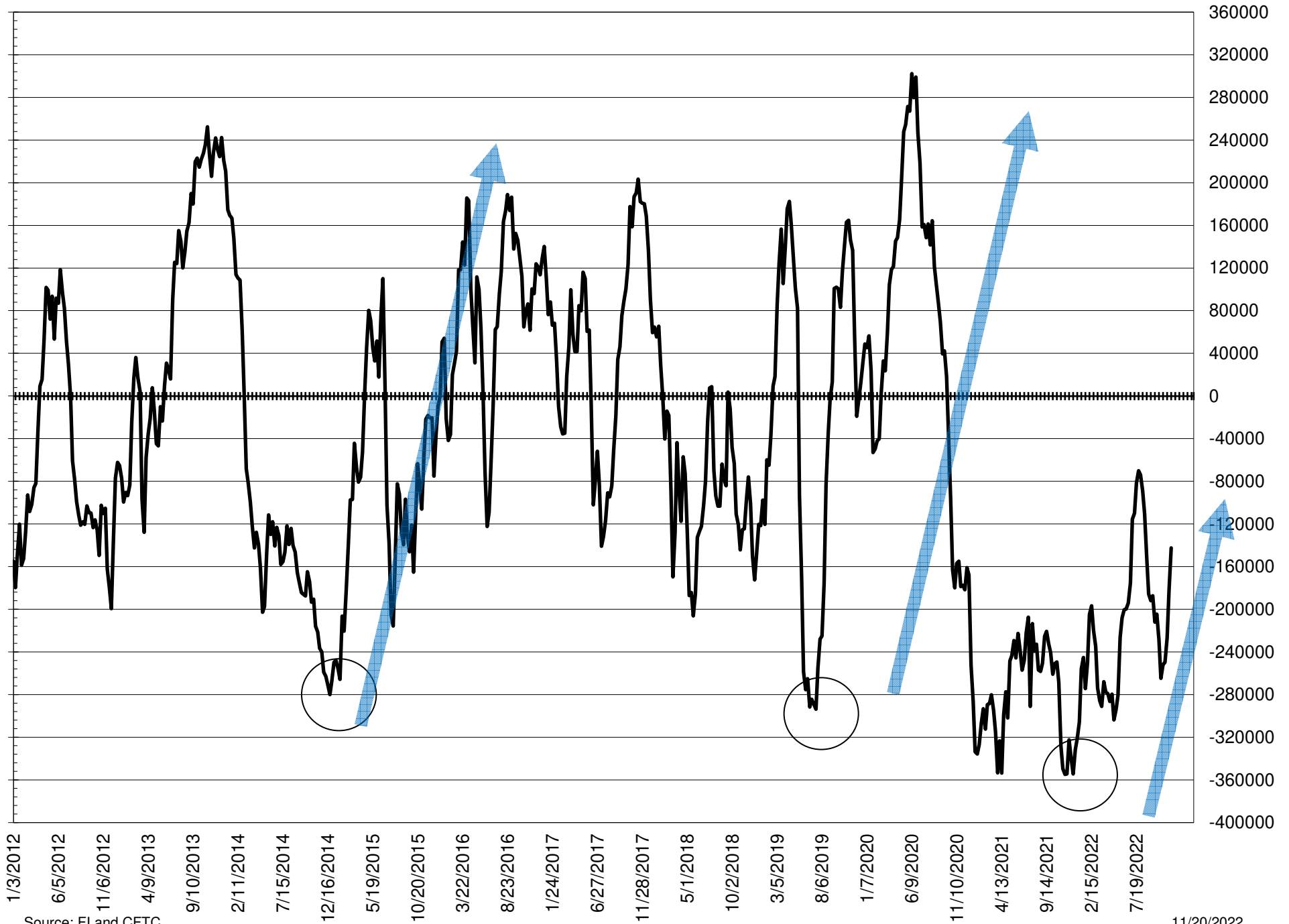
NET POSITION FUTURES AND OPTIONS OF LARGE SPECULATORS IN SOYBEAN MEAL AND SOYBEAN OIL



NET POSITION FUTURES AND OPTIONS OF LARGE SPECULATORS IN SOYBEANS AND CORN



NET POSITION FUTURES AND OPTIONS SPREAD OF LARGE SPECULATORS IN SOYBEANS MINUS CORN



Source: FI and CFTC

11/20/2022

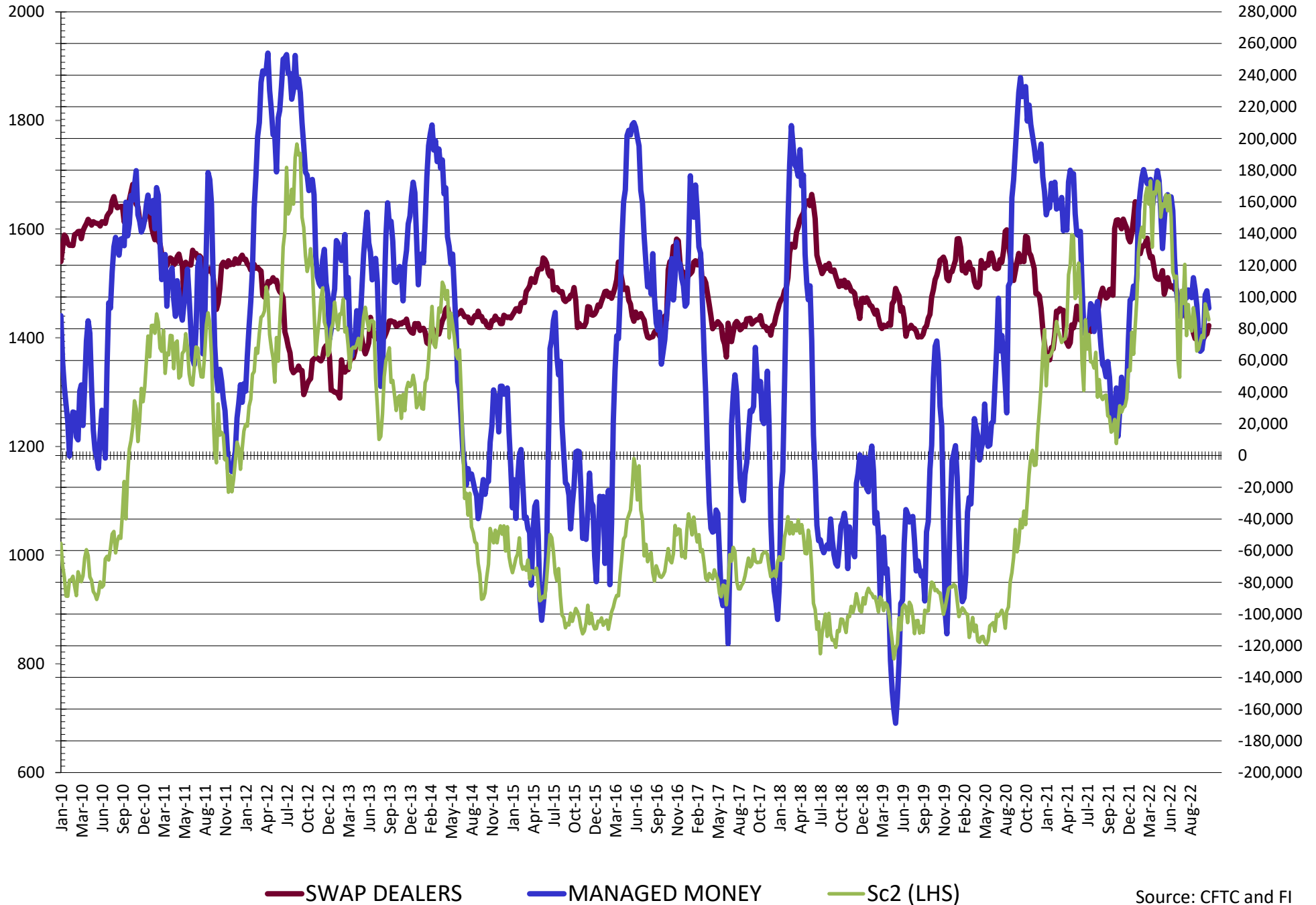
**DISAGGREGATED COMMITMENT OF TRADERS
FUTURES & OPTIONS NET POSITIONS
AS OF 11/15/2022
(IN THOUSAND CONTRACTS)**

	PRODUCER / MERCHANT / PROCESSOR / USER				(INDEX/ETF) SWAP DEALERS				(CTA/CPO/OTHER UNREGISTERED) MANAGED MONEY			
	15-Nov	8-Nov	1-Nov	25-Oct	15-Nov	8-Nov	1-Nov	25-Oct	15-Nov	8-Nov	1-Nov	25-Oct
	WHEAT											
Chicago	(33.6)	(37.4)	(38.2)	(37.8)	66.7	64.9	63.6	61.2	(46.8)	(42.9)	(37.1)	(36.1)
Kansas City	(50.1)	(50.6)	(47.9)	(48.1)	32.5	31.0	28.6	27.5	21.3	24.4	23.4	24.6
Minneapolis	(1.7)	(5.0)	(5.7)	(5.4)	1.6	1.9	1.2	1.0	0.2	3.1	3.8	3.5
All Wheat	(85.3)	(93.1)	(91.8)	(91.4)	100.8	97.9	93.4	89.7	(25.3)	(15.4)	(9.9)	(7.9)
CORN	(424.6)	(460.7)	(490.6)	(476.4)	238.2	233.4	221.8	218.6	176.8	237.7	272.0	264.4
OATS	0.0	0.0	(0.1)	(0.2)	0.0	0.0	0.0	0.0	(1.2)	(1.2)	(1.3)	(1.2)
SOYBEANS	(134.7)	(142.4)	(140.7)	(113.4)	82.1	76.8	75.9	73.9	93.0	103.9	101.3	75.4
SOY OIL	(207.5)	(199.8)	(193.3)	(191.3)	82.5	84.0	81.1	85.0	110.4	105.2	100.1	95.2
SOY MEAL	(204.7)	(225.0)	(221.2)	(216.6)	85.4	81.7	79.5	80.4	75.7	95.4	93.4	86.0

	TOTAL OPEN INTEREST				OTHER REPORTABLE				NON REPORTABLE			
	15-Nov	8-Nov	1-Nov	25-Oct	15-Nov	8-Nov	1-Nov	25-Oct	15-Nov	8-Nov	1-Nov	25-Oct
	WHEAT											
Chicago	448,452	443,703	435,024	411,948	19.8	20.8	18.0	18.9	(6.1)	(5.4)	(6.2)	(6.3)
Kansas City	173,978	172,714	179,185	174,982	(3.2)	(4.0)	(3.2)	(3.1)	(0.5)	(0.8)	(1.0)	(0.8)
Minneapolis	48,903	52,363	57,724	58,197	1.6	2.0	2.2	2.4	(1.7)	(2.0)	(1.5)	(1.5)
All Wheat	671,333	668,780	671,933	645,127	18.2	18.9	17.1	18.1	(8.3)	(8.2)	(8.8)	(8.6)
CORN	1,851,206	1,920,077	1,916,119	1,862,587	47.2	38.4	49.3	48.4	(37.6)	(48.8)	(48.8)	(48.8)
OATS	4,523	4,664	4,351	4,522	0.6	0.6	0.6	0.6	0.6	0.5	0.8	0.8
SOYBEANS	711,647	703,484	669,123	721,646	(11.4)	(10.2)	(7.2)	(12.6)	(29.0)	(28.0)	(29.3)	(23.4)
SOY OIL	536,578	518,361	493,168	482,923	(0.3)	(1.7)	(1.8)	(1.6)	15.0	12.3	13.8	12.8
SOY MEAL	440,919	453,467	435,093	426,681	21.9	19.2	20.0	22.6	21.8	28.7	28.4	27.5

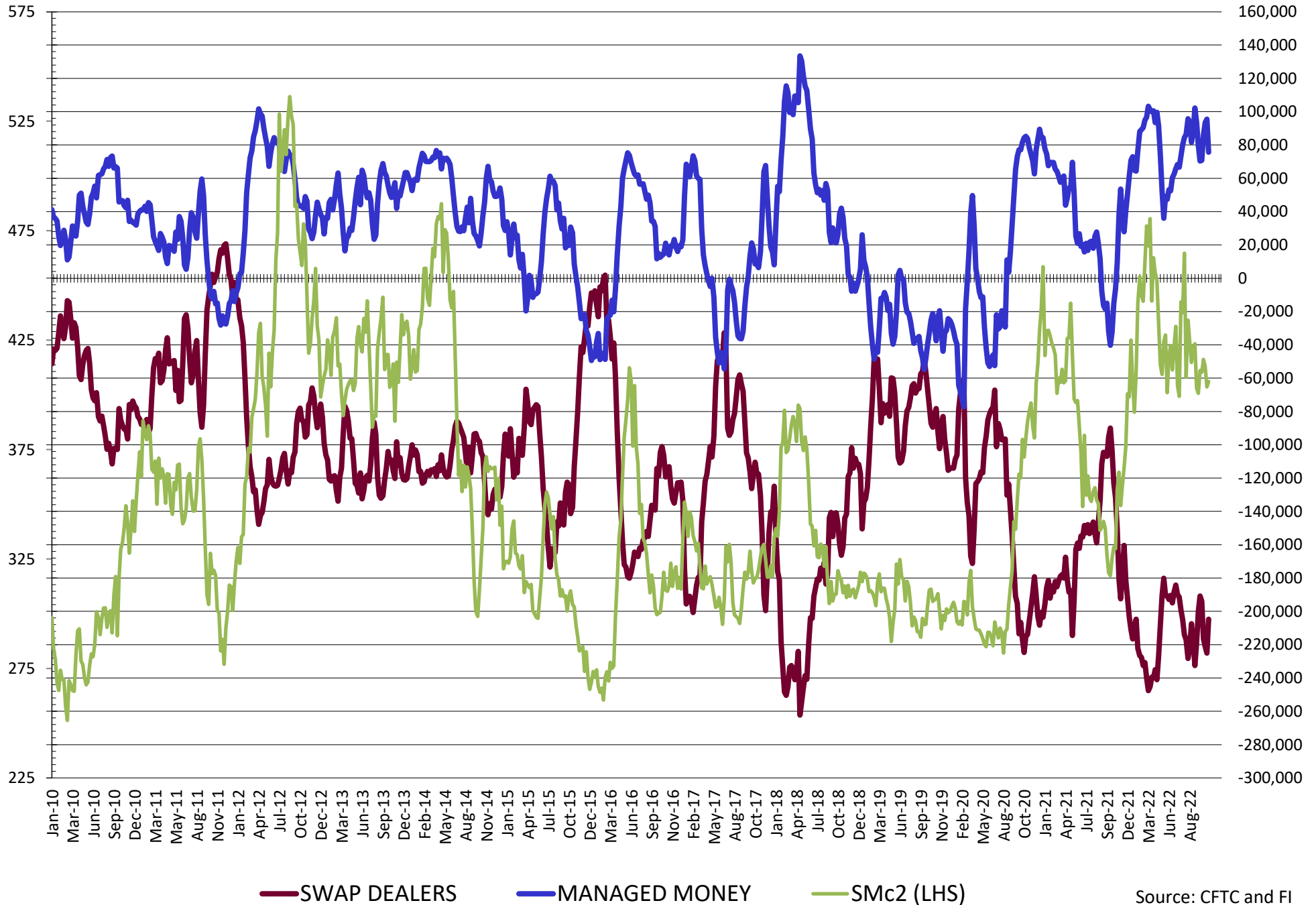
SOURCE: CFTC & FI

NET POSITION FUTURES AND OPTIONS OF SWAP AND MANAGED FUNDS IN SOYBEANS

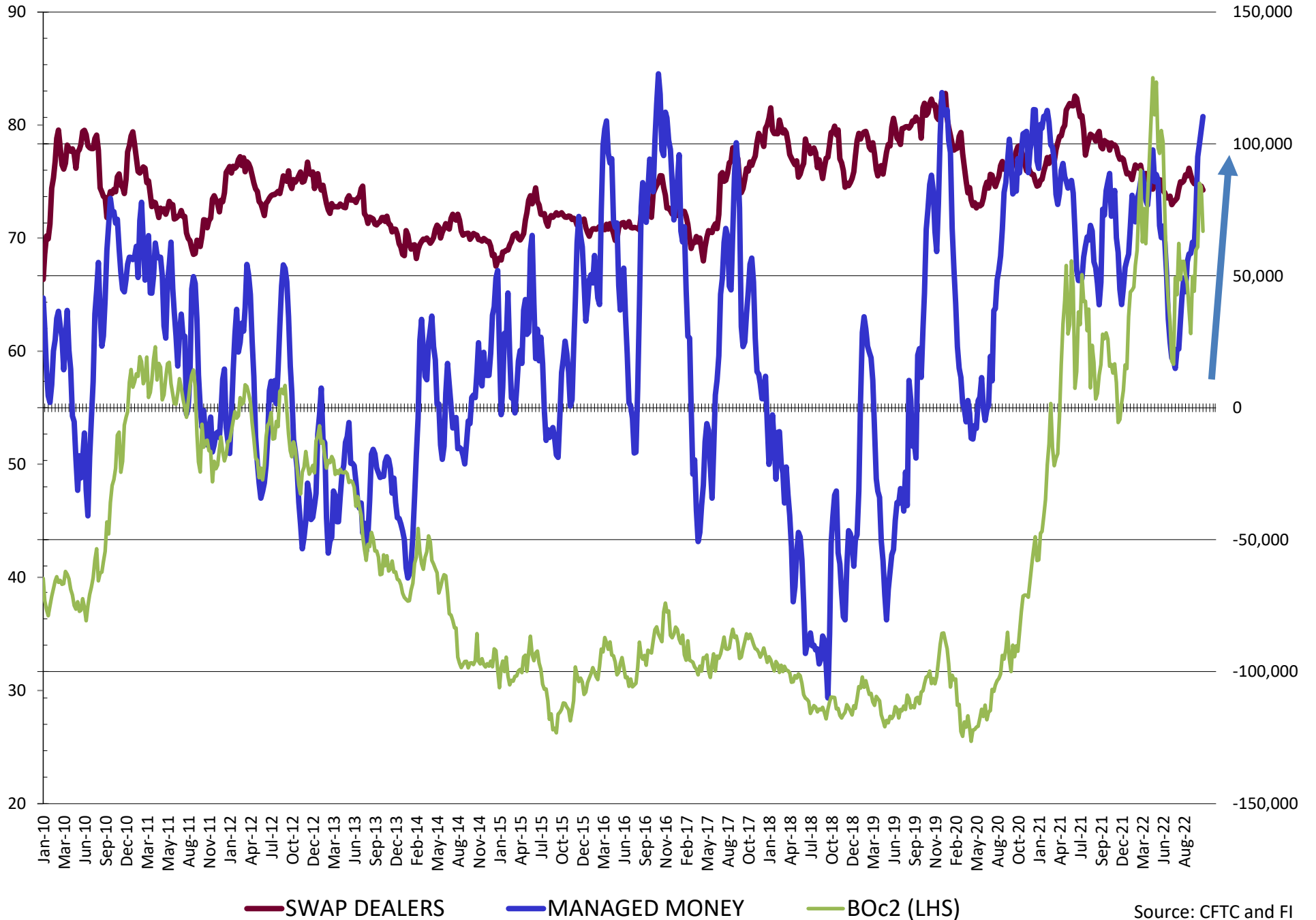


Source: CFTC and FI
11/20/2022

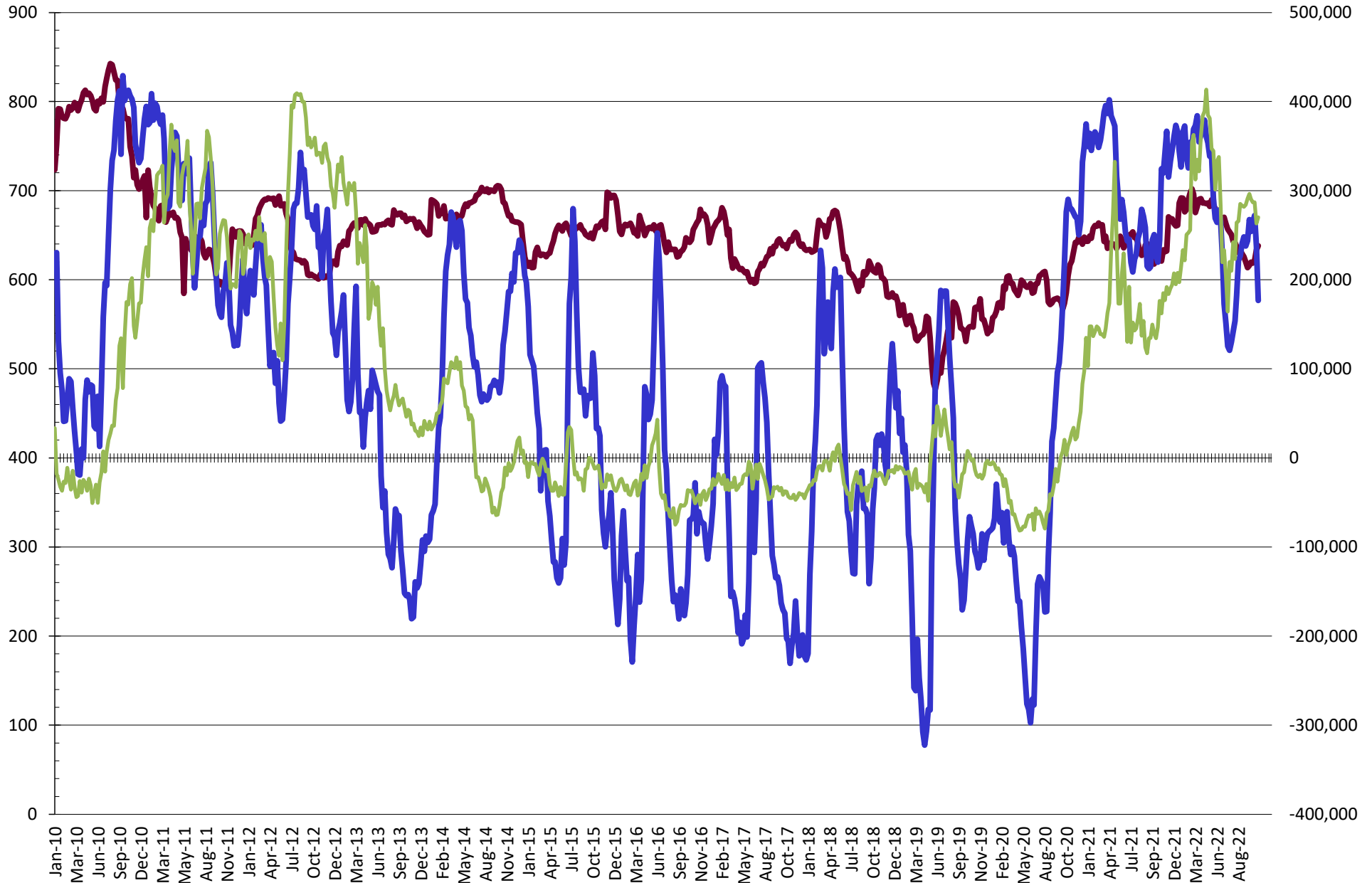
NET POSITION FUTURES AND OPTIONS OF SWAP AND MANAGED FUNDS IN SOYBEAN MEAL



NET POSITION FUTURES AND OPTIONS OF SWAP AND MANAGED FUNDS IN SOYBEAN OIL

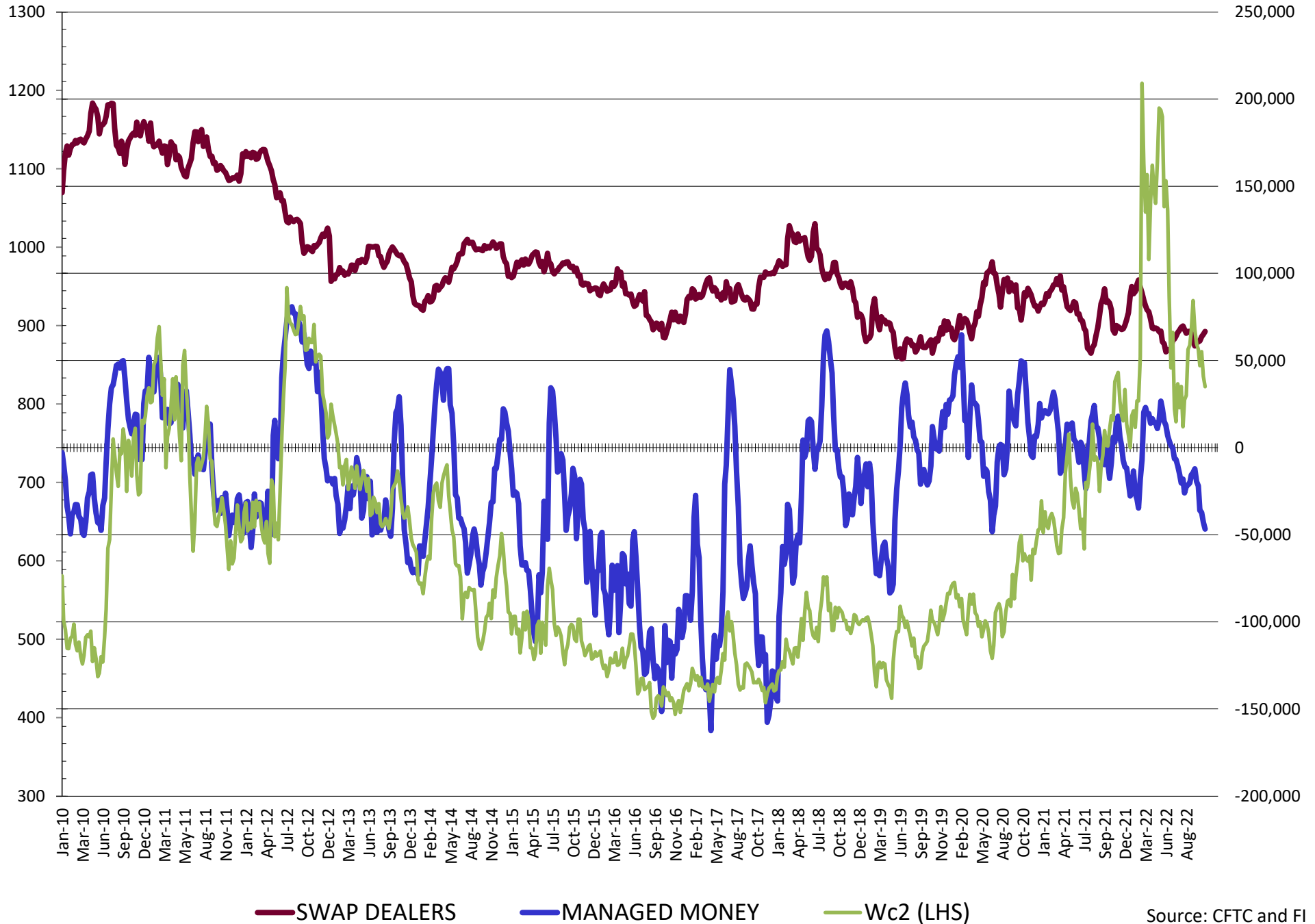


NET POSITION FUTURES AND OPTIONS OF SWAP AND MANAGED FUNDS IN CORN

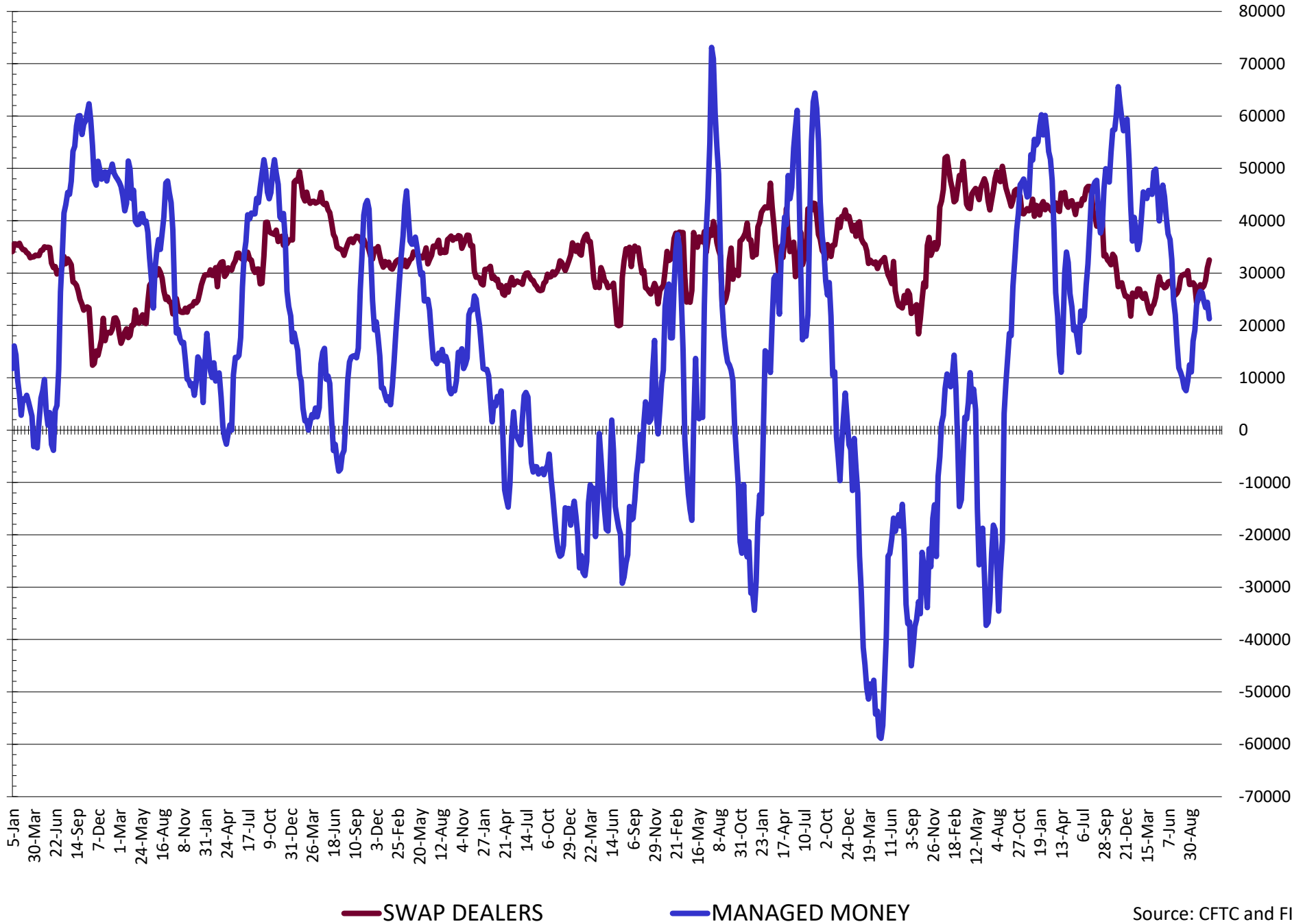


— SWAP DEALERS
 — MANAGED MONEY
 — Cc2 (LHS)

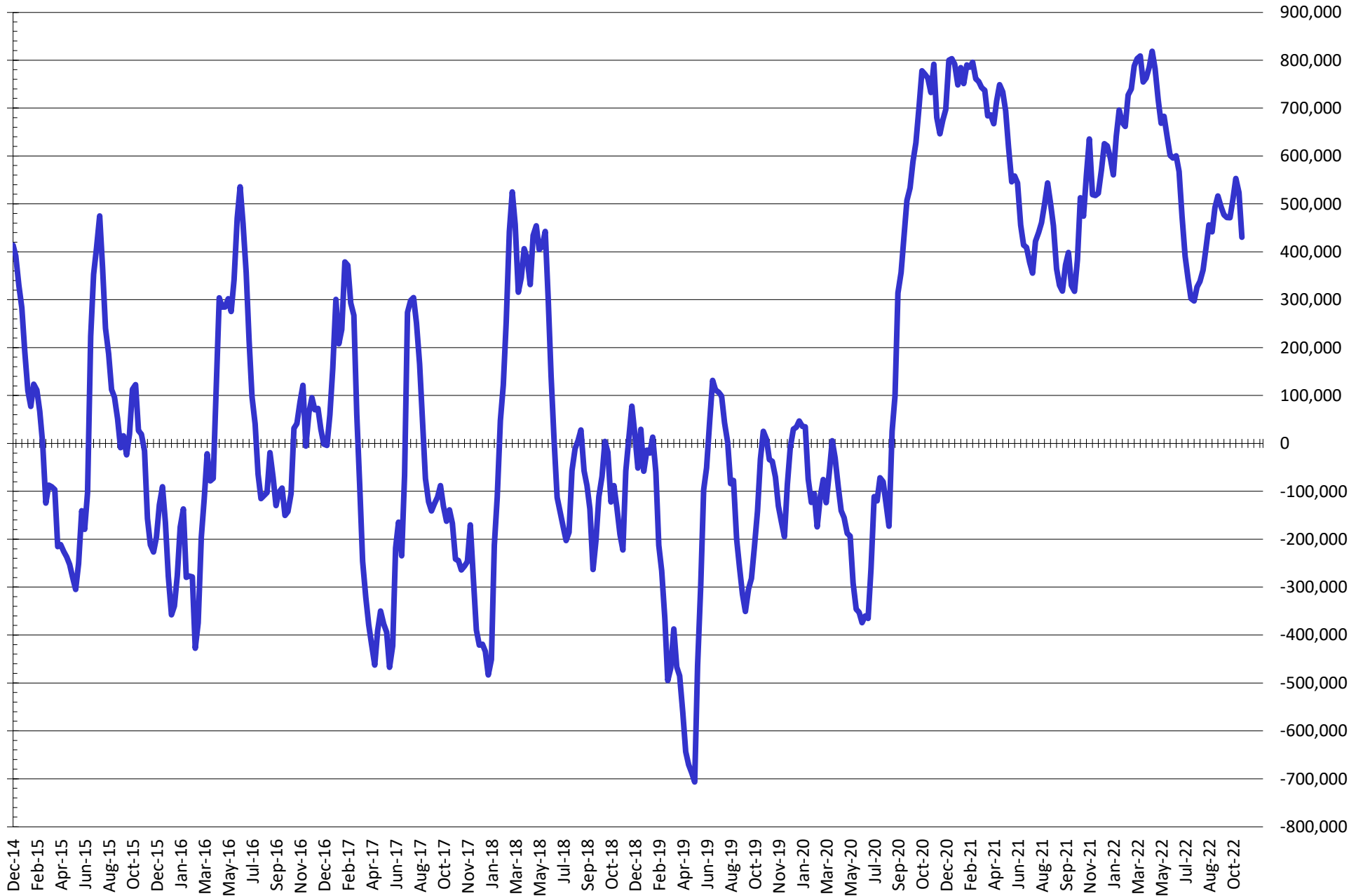
NET POSITION FUTURES AND OPTIONS OF SWAP AND MANAGED FUNDS IN CHICAGO WHEAT



NET POSITION FUTURES AND OPTIONS OF SWAP DEALERS AND MANAGED FUNDS IN KANSAS WHEAT



NET POSITION FUTURES AND OPTIONS OF SWAP AND MANAGED FUNDS IN COMBINED SRW, HRW, CORN, SOYBEANS, SOYMEAL AND SOYOIL



— Net Managed Money

Source: CFTC and FI
11/20/2022

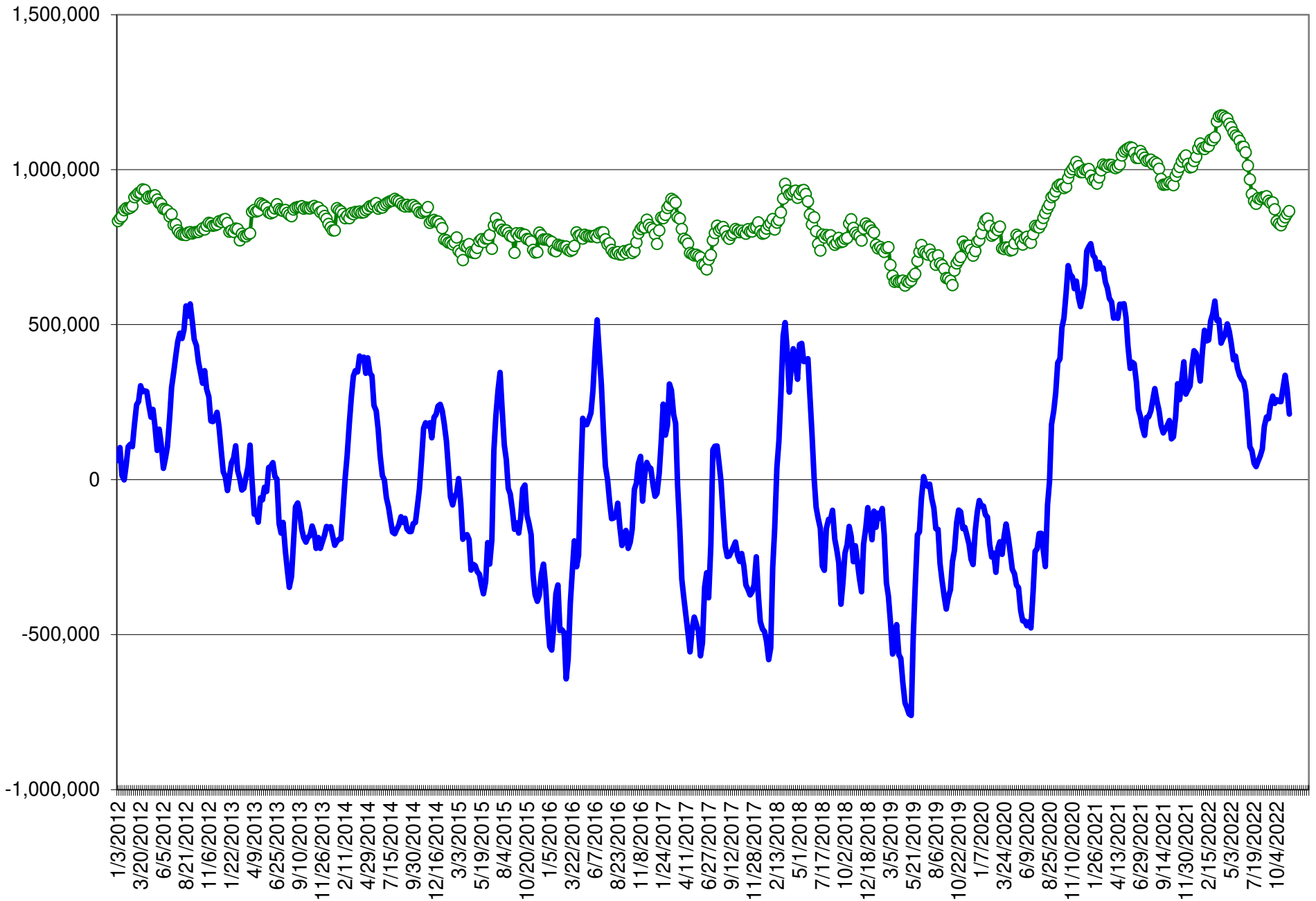
COMMITMENT OF TRADERS
FUTURES & OPTIONS NET POSITIONS (INDEX BROKEN OUT)
AS OF 11/15/2022
(IN THOUSAND CONTRACTS)

	COMMERCIAL				(FUND) NON COMMERCIAL				(SPEC) NON-REPORTABLE			
	15-Nov	8-Nov	1-Nov	25-Oct	15-Nov	8-Nov	1-Nov	25-Oct	15-Nov	8-Nov	1-Nov	25-Oct
	WHEAT											
Chicago	(40.4)	(45.1)	(46.7)	(45.7)	(60.5)	(58.5)	(52.4)	(50.6)	(6.1)	(5.4)	(6.2)	(6.3)
Kansas City	(50.0)	(51.8)	(51.7)	(52.0)	3.7	6.3	4.8	5.8	(0.5)	(0.8)	(1.0)	(0.8)
Minneapolis	-	-	-	-	-	-	-	-	-	-	-	-
All Wheat	(90.4)	(96.9)	(98.4)	(97.7)	(56.8)	(52.2)	(47.6)	(44.8)	(6.6)	(6.2)	(7.3)	(7.1)
CORN	(427.4)	(465.0)	(503.0)	(491.2)	103.6	153.2	196.7	184.7	(37.6)	(48.8)	(52.4)	(55.0)
OATS	-	-	-	-	-	-	-	-	-	-	-	-
SOYBEANS	(140.8)	(147.9)	(147.2)	(119.1)	44.3	55.8	57.2	26.9	(29.0)	(28.0)	(29.3)	(23.4)
SOY OIL	(192.5)	(183.3)	(178.0)	(172.0)	68.9	64.2	59.9	57.0	15.0	12.3	13.8	12.8
SOY MEAL	(190.3)	(212.4)	(209.0)	(203.0)	51.4	69.3	70.3	70.0	21.8	28.7	28.4	27.5

	TOTAL OPEN INTEREST				(INDEX) COMMERCIAL INDEX TRADERS				(INDEX) % NET OF TOTAL OPEN INTEREST			
	15-Nov	8-Nov	1-Nov	25-Oct	15-Nov	8-Nov	1-Nov	25-Oct	15-Nov	8-Nov	1-Nov	25-Oct
	WHEAT											
Chicago	448,452	443,703	435,024	411,948	107.1	109.0	105.4	102.5	23.9%	24.6%	24.2%	24.9%
Kansas City	173,978	172,714	179,185	174,982	46.8	46.3	47.9	47.0	26.9%	26.8%	26.7%	26.9%
Minneapolis	-	-	-	-	-	-	-	-	-	-	-	-
All Wheat	622,430	616,417	614,209	586,930	153.8	155.4	153.3	149.5	24.7%	25.2%	25.0%	25.5%
CORN	1,851,206	1,920,077	1,916,119	1,862,587	361.4	360.6	358.7	361.5	19.5%	18.8%	18.7%	19.4%
OATS	-	-	-	-	-	-	-	-	-	-	-	-
SOYBEANS	711,647	703,484	669,123	721,646	125.5	120.2	119.4	115.5	17.6%	17.1%	17.8%	16.0%
SOY OIL	536,578	518,361	493,168	482,923	108.6	106.8	104.3	102.2	20.2%	20.6%	21.1%	21.2%
SOY MEAL	440,919	453,467	435,093	426,681	117.1	114.5	110.4	105.4	26.6%	25.2%	25.4%	24.7%

SOURCE: CFTC & FI

NET POSITION FUTURES AND OPTIONS OF SPECULATORS AND INDEX FUNDS IN COMBINED SRW, HRW, CORN, SOYBEANS, SOYMEAL AND SOYOIL



Source: CFTC and FI

○ Net Index

— Net Speculator

Traditional Daily Estimate of Funds 11/15/22

	(Neg)-"Short"	Pos-"Long"			
Actual less Est.	(39.7)	(19.0)	(7.3)	(12.5)	(3.7)
	Corn	Bean	Chi. Wheat	Meal	Oil
Actual	252.9	76.8	(22.5)	104.7	105.3
16-Nov	(2.0)	(11.0)	(5.0)	(2.0)	(8.0)
17-Nov	0.0	(6.0)	(6.0)	(1.0)	(5.0)
18-Nov	1.0	5.0	(2.0)	3.0	2.0
21-Nov					
22-Nov					
FI Est. of Futures Only 11/15/22	251.9	64.8	(35.5)	104.7	94.3
FI Est. Futures & Options	223.0	69.6	(39.9)	97.5	99.1
Futures only record long "Traditional Funds"	547.7 1/26/2021	280.9 11/10/2020	86.5 8/7/2018	167.5 5/1/2018	160.2 11/1/2016
Futures only record short	(235.0) 6/9/2020	(118.3) 4/30/2019	(130.0) 4/25/2017	(49.5) 3/1/2016	(69.8) 9/18/2018
Futures and options record net long	557.6 1/12/2021	270.9 10/6/2020	64.8 8/7/2012	132.1 5/1/2018	159.2 1/1/2016
Futures and options record net short	(270.6) 4/26/2019	(132.0) 4/30/2019	(143.3) 4/25/2017	(64.1) 3/1/2016	(77.8) 9/18/2018

Managed Money Daily Estimate of Funds 11/15/22

	Corn	Bean	Chi. Wheat	Meal	Oil
Latest CFTC Fut. Only	165.8	95.6	(47.6)	76.1	111.1
Latest CFTC F&O	176.8	93.0	(46.8)	75.7	110.4
FI Est. Managed Fut. Only	165	84	(61)	76	100
FI Est. Managed Money F&O	176	81	(60)	76	99

Index Funds Latest Positions (as of last Tuesday)

Index Futures & Options	361.4	125.5	107.1	NA	108.6
Change From Previous Week	0.8	5.3	(2.0)	NA	1.9

Source: Reuters, CFTC & FI (FI est. are noted with latest date)

Disclaimer

TO CLIENTS/PROSPECTS OF FUTURES INTERNATIONAL, SEE RISK DISCLOSURE BELOW:

THIS COMMUNICATION IS CONVEYED AS A SOLICITATION FOR ENTERING INTO A DERIVATIVES TRANSACTION.

Any trading recommendations and market or other information to Customer by Futures International (FI), although based upon information obtained from sources believed by FI to be reliable may not be accurate and may be changed without notice to customer. FI makes no guarantee as to the accuracy or completeness of any of the information or recommendations furnished to Customer. Customer understands that FI, its managers, employees and/or affiliates may have a position in commodity futures, options or other derivatives which may not be consistent with the recommendations furnished by FI to Customer.

The risk of trading futures and options and other derivatives involves a substantial risk of loss and is not suitable for all persons. In purchasing an option, the risk is limited to the premium paid, and all commissions and fees involved with the trade. When an option is shorted or written, the writer of the option has unlimited risk with respect to the option written. The use of options strategies such as a straddles and strangles involve multiple option positions and may substantially increase the amount of commissions and fees paid to execute the strategy. Option prices do not necessarily move in tandem with cash or futures prices. Each person must consider whether a particular trade, combination of trades or strategy is suitable for that person's financial means and objectives.

This material may include discussions of seasonal patterns, however, futures prices have already factored in the seasonal aspects of supply and demand, and seasonal patterns are no indication of future market trends. Finally, past performance is not indicative of future results.

This communication may contain links to third party websites which are not under the control of FI and FI is not responsible for their content. Products and services are offered only in jurisdictions where solicitation and sale are lawful, and in accordance with applicable laws and regulations in each such jurisdiction.