

# CFTC COMMITMENT OF TRADERS REPORT

As of 12/13/2022

## TRADITIONAL FUNDS net position changes

Wed to Tue, in 000 contracts

	Corn	Bean	Meal	Oil	Chi. Wheat	KC Wheat	Min Wheat
Futures Only	13.9	23.4	11.4	(10.7)	(0.0)	0.2	(0.7)
Futures & Options Combined	14.1	24.1	14.3	(14.6)	(1.0)	0.2	(0.6)

## TRADITIONAL COMMERCIAL net position changes

	Corn	Bean	Meal	Oil	Chi. Wheat	KC Wheat	Min Wheat
Futures Only	(15.7)	(22.1)	(10.4)	10.3	0.1	(1.6)	0.6
Futures & Options Combined	(18.3)	(22.4)	(12.2)	14.3	1.0	(1.7)	0.5

## MANAGED MONEY net position changes

	Corn	Bean	Meal	Oil	Chi. Wheat	KC Wheat	Min Wheat
Futures Only	8.4	19.7	17.0	(10.2)	0.0	(1.5)	(0.9)
Futures & Options Combined	6.9	20.1	16.0	(9.2)	0.4	(1.2)	(0.9)

## SWAP DEALERS net position changes

	Corn	Bean	Meal	Oil	Chi. Wheat	KC Wheat	Min Wheat
Futures Only	(5.9)	5.4	(1.5)	4.0	0.7	(0.2)	0.0
Futures & Options Combined	(7.1)	4.6	(1.8)	3.9	0.8	(0.4)	0.0

## PRODUCERS/END USERS net position changes

	Corn	Bean	Meal	Oil	Chi. Wheat	KC Wheat	Min Wheat
Futures Only	(9.8)	(27.5)	(8.9)	6.3	(0.6)	(1.4)	0.6
Futures & Options Combined	(11.2)	(27.0)	(10.4)	10.4	0.2	(1.4)	0.5

## INDEX net position changes

	Corn	Bean	Meal	Oil	Chi. Wheat	KC Wheat	Min Wheat
Futures & Options Combined	(11.7)	4.6	(0.8)	(0.4)	(1.8)	(0.2)	NA

## SUPPLEMENTAL NON-COMMERCIAL net position changes

	Corn	Bean	Meal	Oil	Chi. Wheat	KC Wheat	Min Wheat
Futures & Options Combined	20.4	24.3	13.9	(14.0)	0.6	0.4	NA

## OPEN INTEREST net position changes

Wed to Tue, in 000 contracts

	Corn	Bean	Meal	Oil	Chi. Wheat	KC Wheat	Min Wheat
Futures Only	(27.0)	16.5	3.8	(23.2)	0.6	4.8	1.3
Futures & Options Combined	(28.6)	25.4	11.2	(21.5)	0.3	5.2	1.2

Source: CFTC and FI

Wed to Tue, in 000 contracts

12/16/2022

**COMMITMENT OF TRADERS  
FUTURES ONLY NET POSITIONS  
AS OF 12/13/2022  
(IN THOUSAND CONTRACTS)**

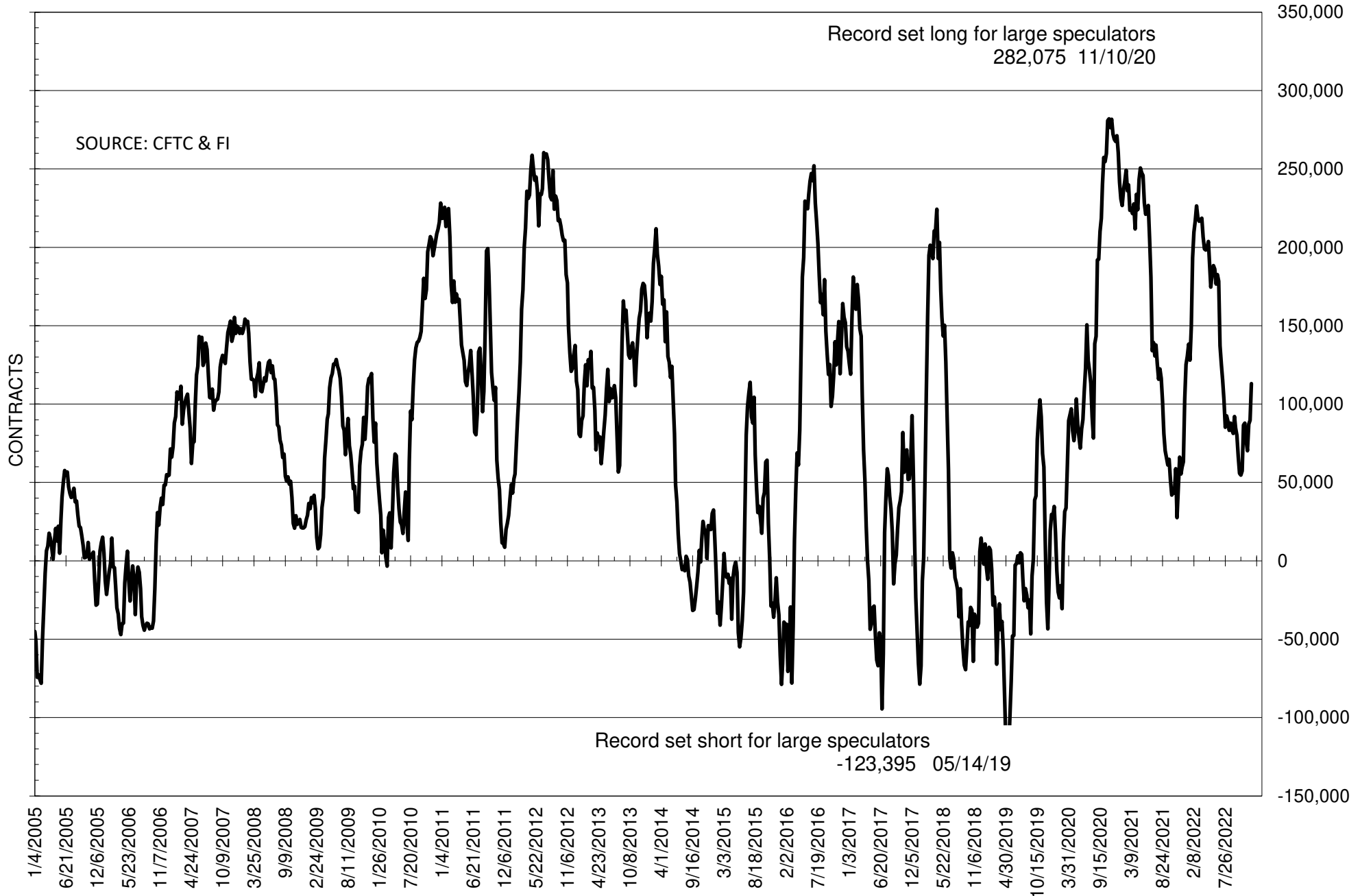
	COMMERCIAL				(FUND) NON COMMERCIAL				(SPEC) NON-REPORTABLE			
	13-Dec	6-Dec	29-Nov	22-Nov	13-Dec	6-Dec	29-Nov	22-Nov	13-Dec	6-Dec	29-Nov	22-Nov
	<b>WHEAT</b>											
Chicago	42.9	42.8	37.0	30.6	-39.9	-39.9	-33.3	-27.5	-3.0	-2.9	-3.7	-3.1
Kansas City	-3.6	-2.0	-12.1	-13.4	4.9	4.7	13.6	14.1	-1.3	-2.8	-1.5	-0.7
Minneapolis	3.4	2.8	-1.0	-1.3	-1.3	-0.6	1.6	2.0	-2.0	-2.2	-0.7	-0.6
All Wheat	42.6	43.6	24.0	15.9	-36.4	-35.8	-18.1	-11.5	-6.3	-7.9	-5.9	-4.4
<b>CORN</b>	-173.2	-157.5	-231.2	-215.5	212.2	198.4	270.2	248.8	-39.0	-40.8	-39.1	-33.3
OATS	0.1	0.1	-0.1	-0.1	-1.0	-0.7	-0.4	-0.3	0.9	0.6	0.5	0.5
<b>SOYBEANS</b>	-82.0	-59.9	-61.6	-44.4	113.1	89.7	87.2	70.2	-31.0	-29.8	-25.7	-25.8
SOY OIL	-68.5	-78.9	-116.9	-111.2	55.6	66.3	103.9	99.5	12.9	12.6	13.0	11.7
SOY MEAL	-152.1	-141.8	-122.2	-121.3	133.5	122.2	102.3	101.1	18.6	19.6	19.9	20.2

Oats positions thin to be reported

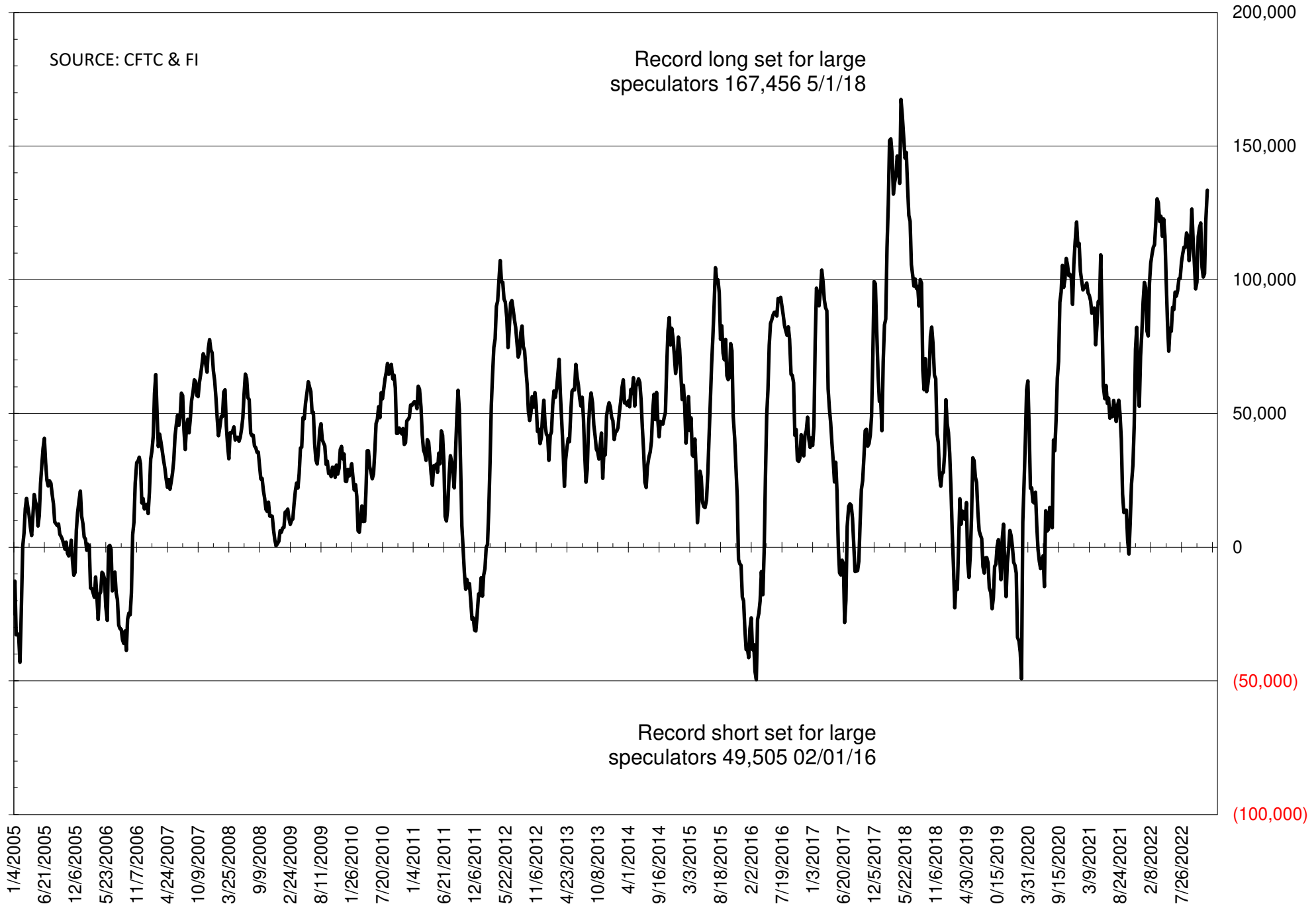
	TOTAL OPEN INTEREST				NEARBY FUTURES PRICE					13-Dec-22 LAST REPORTED % HELD BY TRADERS			
	13-Dec	6-Dec	29-Nov	22-Nov	F/H Latest	F/H 13-Dec	Z/F 6-Dec	Z/F 29-Nov	Z/F 22-Nov	LARGE FUND		SMALL	
										LONG	SHORT	LONG	SHORT
<b>WHEAT</b>													
Chicago	335354	334760	310667	352395	753.50	750.75	729.00	757.75	792.50	0%	40%	0%	11%
Kansas City	151174	146353	142738	147905	844.00	865.25	830.00	901.00	912.00	0%	22%	0%	13%
Minneapolis	47865	46603	44829	43111	911.00	922.75	897.00	940.25	950.25	0%	13%	0%	22%
<b>CORN</b>	1205259	1232307	1226410	1362664	653.00	653.50	637.25	665.75	659.25	0%	9%	0%	13%
OATS	4103	3706	3274	4071	338.50	340.75	337.00	392.00	396.00	0%	43%	0%	29%
<b>SOYBEANS</b>	638744	622200	634754	623227	1480.00	1479.75	1455.00	1459.50	1429.75	27%	9%	8%	12%
SOY OIL	410837	434000	444650	450896	63.36	64.12	61.62	76.54	71.44	0%	10%	0%	5%
SOY MEAL	392236	388478	369599	395596	463.00	452.30	448.60	408.50	405.00	0%	4%	0%	7%

SOURCE: CFTC & FI

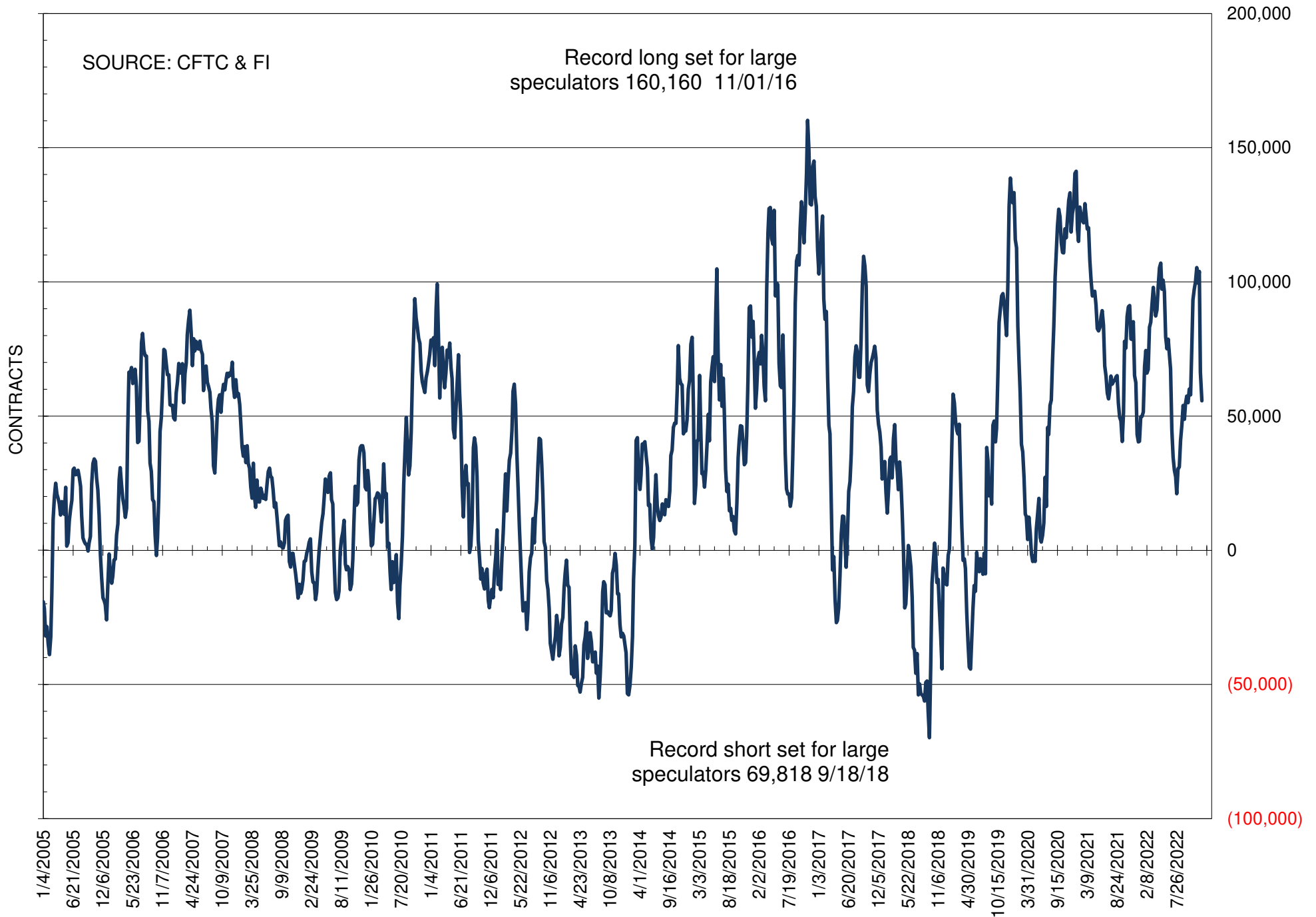
# NET POSITION OF FUTURES ONLY LARGE SPECS IN SOYBEANS



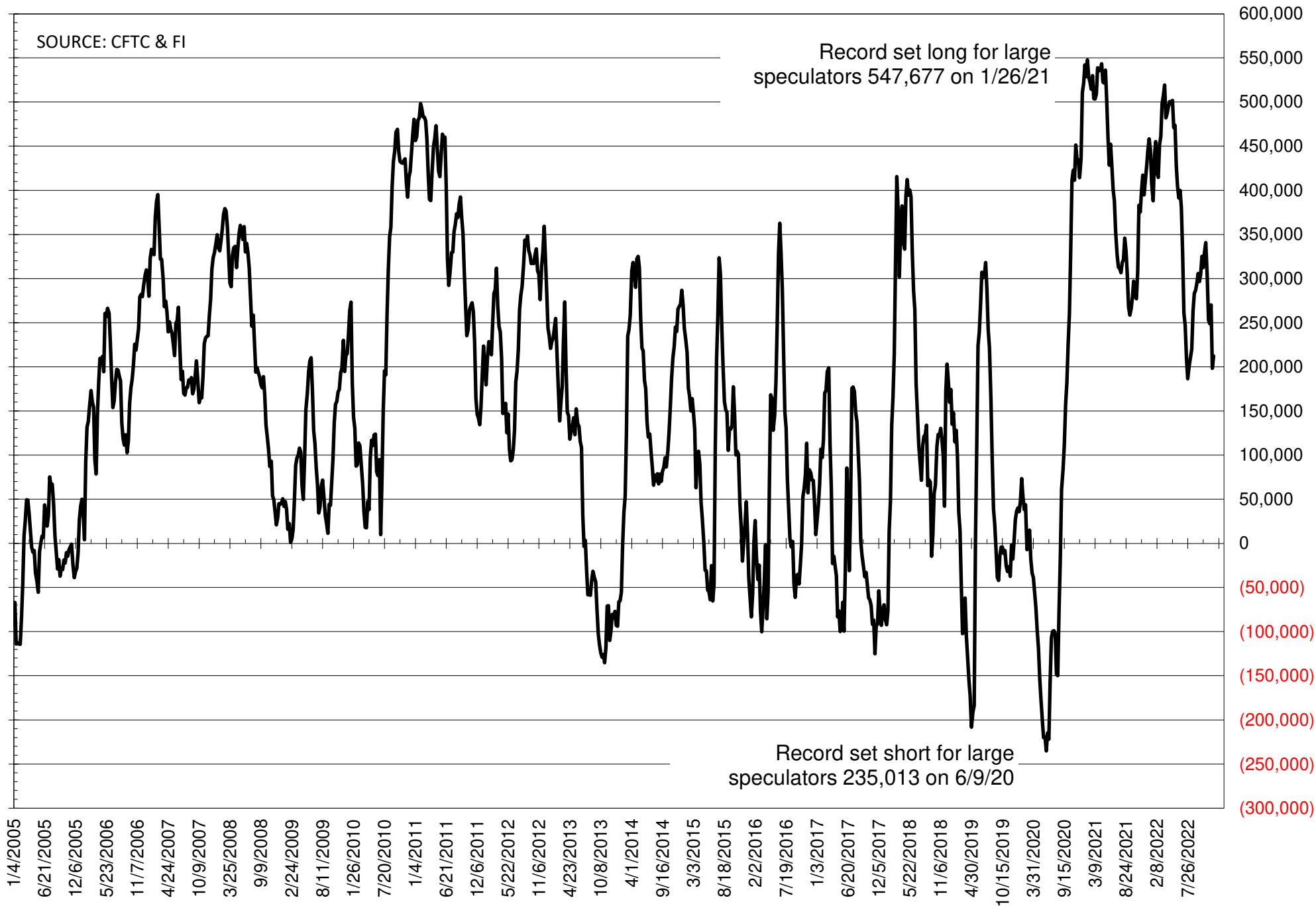
# NET POSITION OF FUTURES ONLY LARGE SPECS IN SOYMEAL



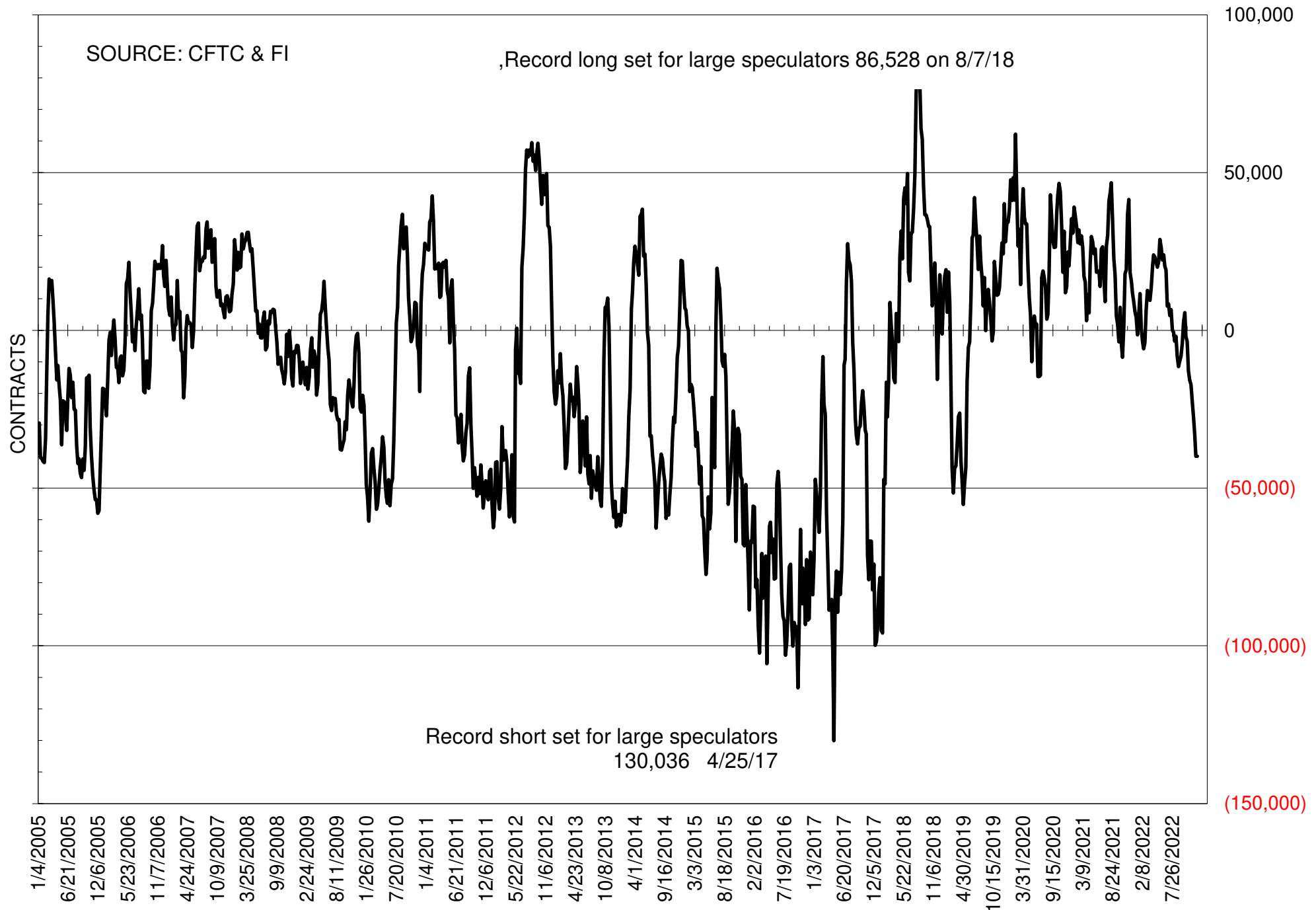
# NET POSITION OF FUTURES ONLY LARGE SPECS IN SOYOIL



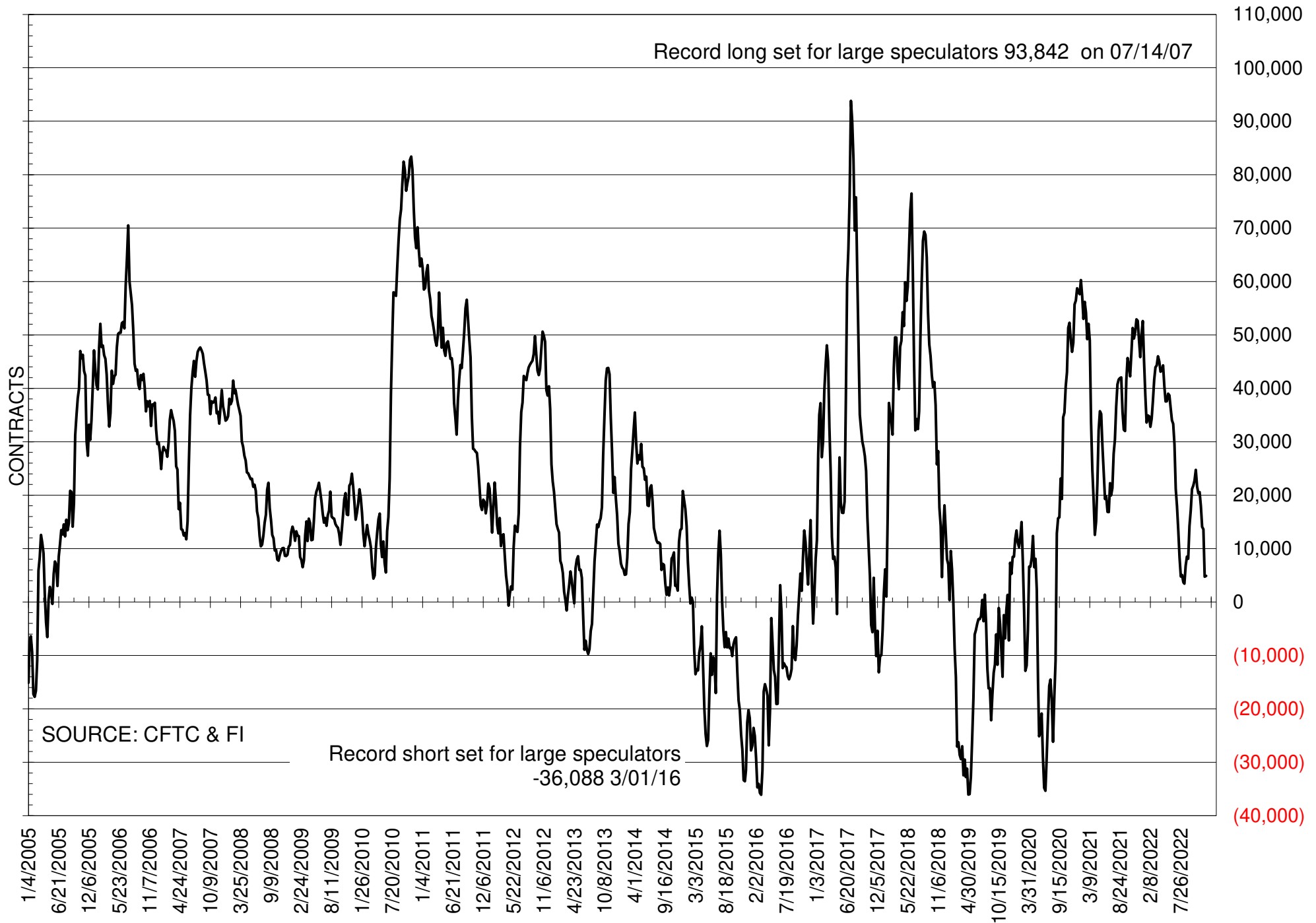
# NET POSITION OF LARGE SPECULATORS IN CORN



# NET POSITION OF FUTURES ONLY LARGE SPECS IN CHICAGO WHEAT

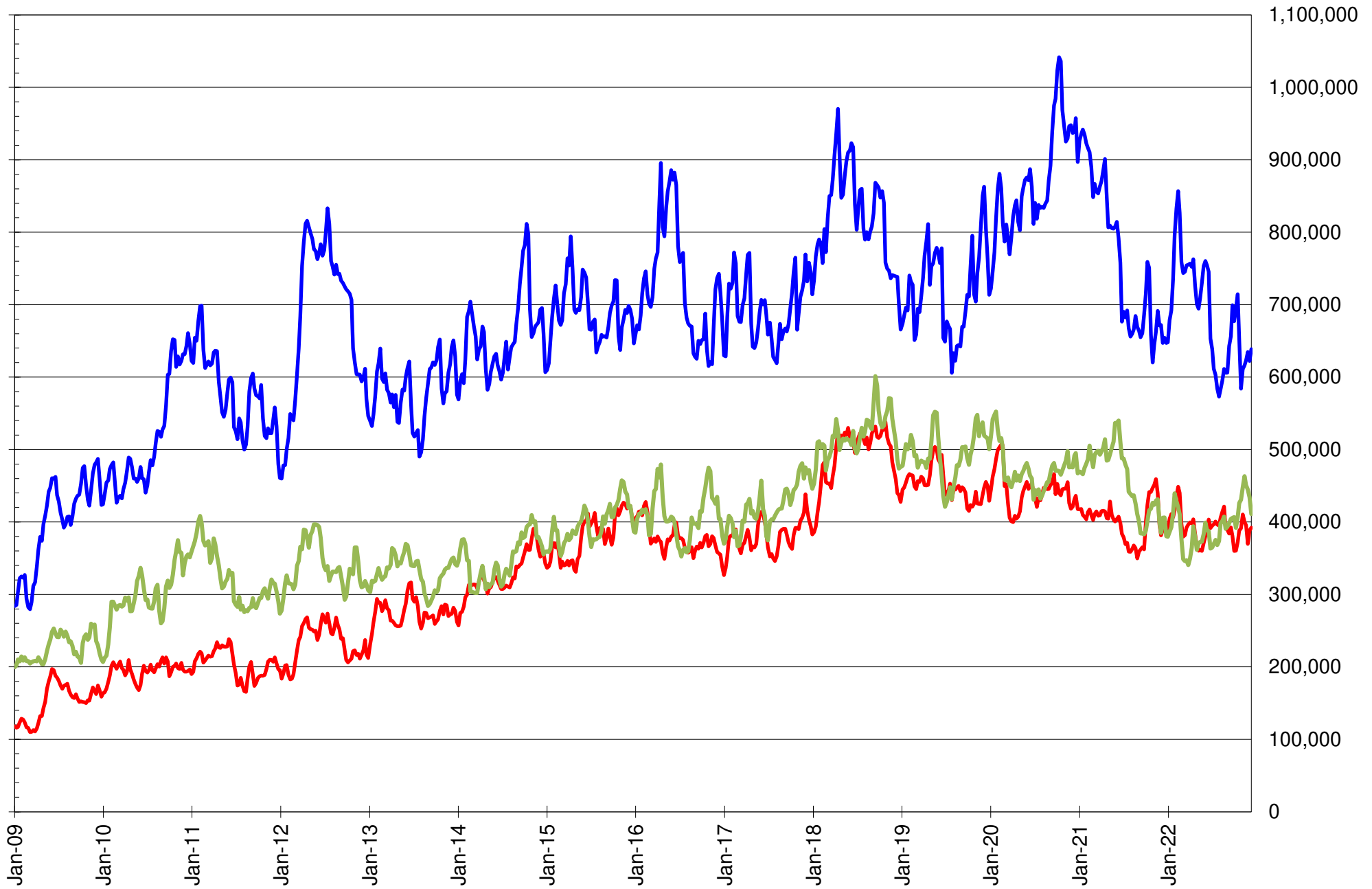


# NET POSITION OF LARGE SPECULATORS IN KANSAS CITY WHEAT





# TOTAL OPEN INTEREST IN SOYBEANS, MEAL AND OIL, FUTURES ONLY



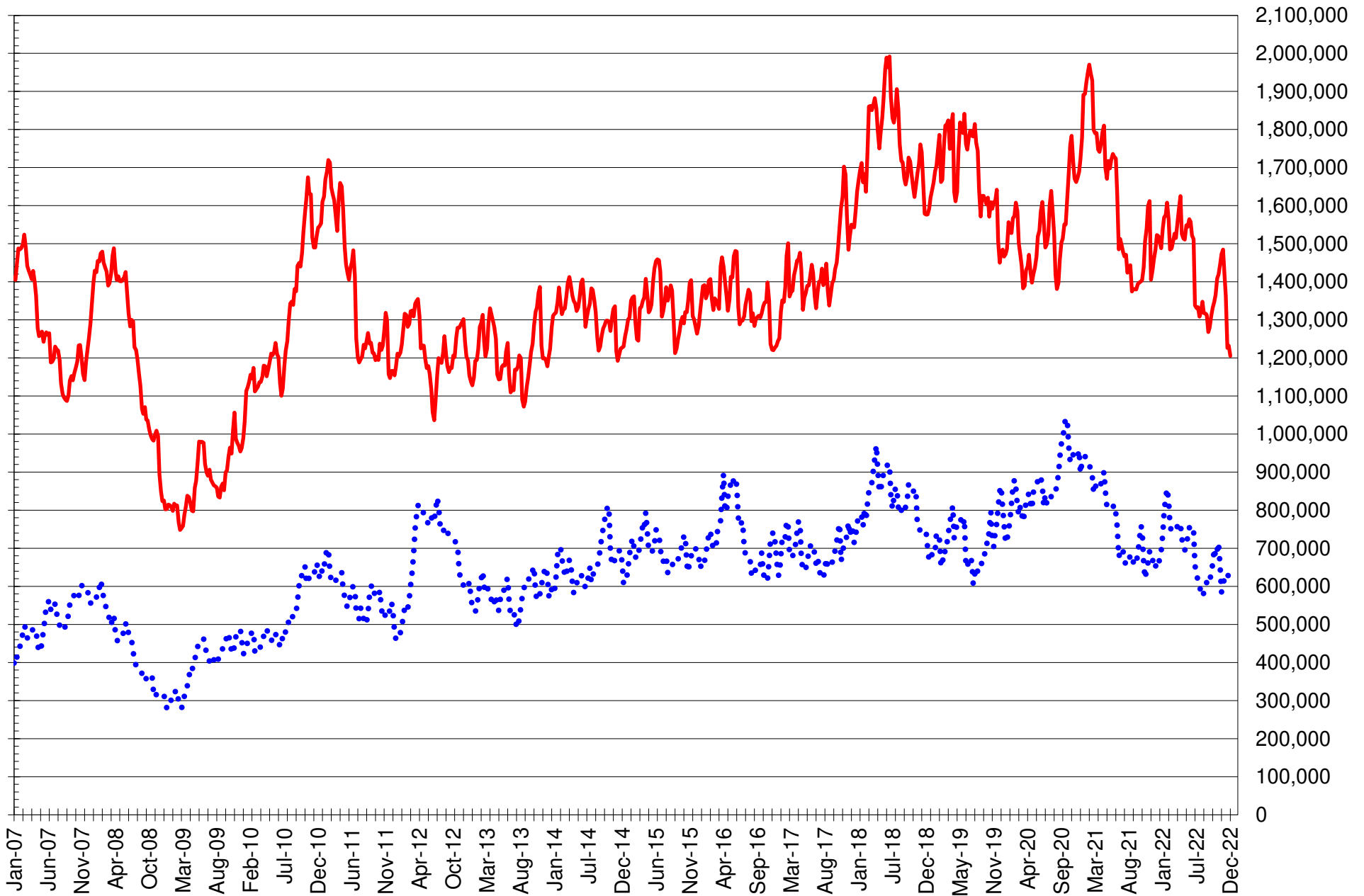
SOURCE: CFTC & FI

— SOYBEANS

— SOYBEAN MEAL

— SOYBEAN OIL

# TOTAL OPEN INTEREST IN CORN AND SOYBEANS, FUTURES ONLY



SOURCE: CFTC & FI

— CORN

•••• SOYBEANS

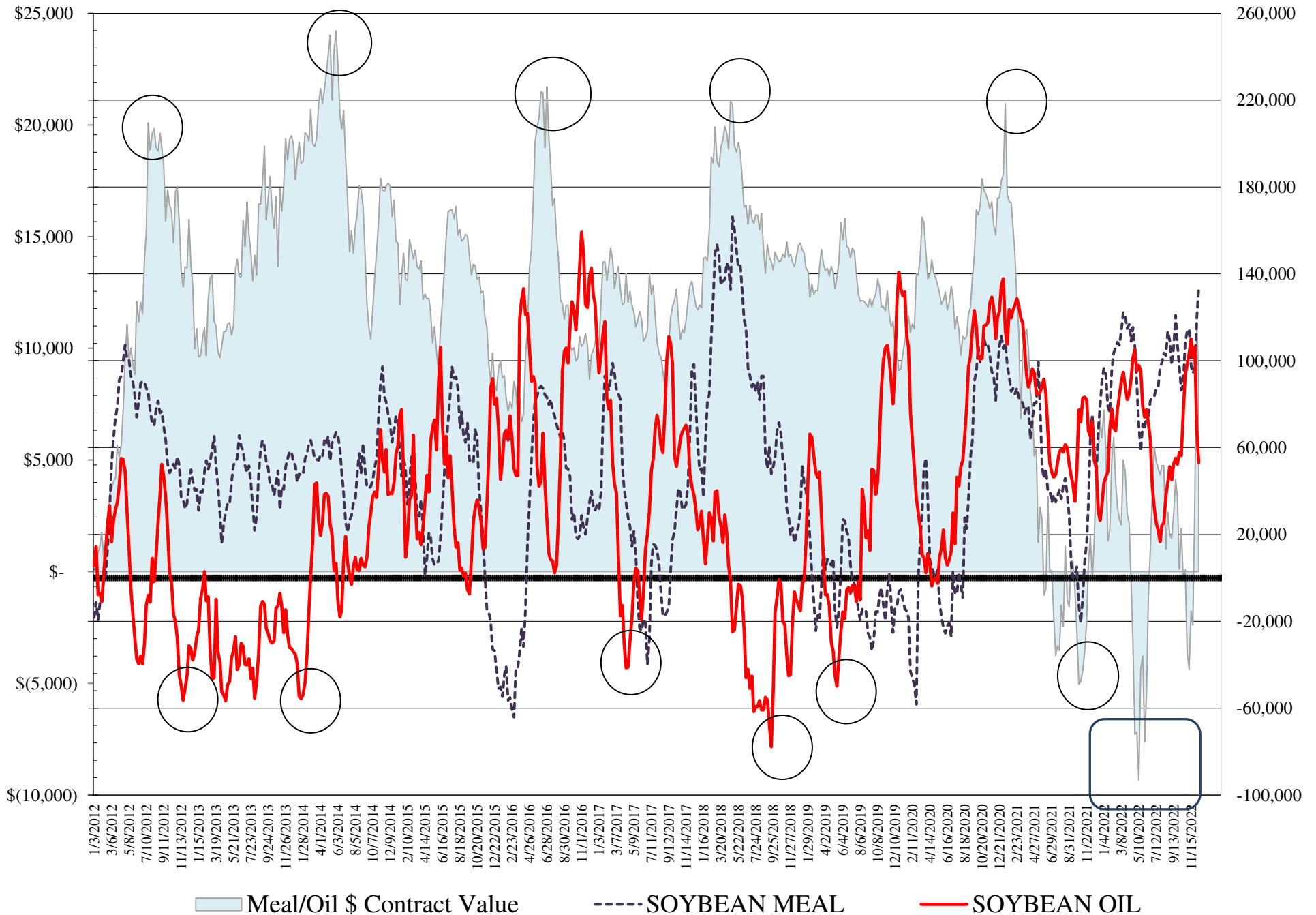
**COMMITMENT OF TRADERS  
FUTURES & OPTIONS NET POSITIONS  
AS OF 12/13/2022  
(IN THOUSAND CONTRACTS)**

	COMMERCIAL				(FUND) NON COMMERCIAL				(SPEC) NON-REPORTABLE			
	13-Dec	6-Dec	29-Nov	22-Nov	13-Dec	6-Dec	29-Nov	22-Nov	13-Dec	6-Dec	29-Nov	22-Nov
<b>WHEAT</b>												
Chicago	44.5	43.5	35.7	35.3	-42.9	-41.9	-33.0	-33.1	-1.6	-1.5	-2.7	-2.2
Kansas City	-2.0	-0.3	-11.3	-13.7	3.0	2.8	12.7	13.9	-0.9	-2.5	-1.4	-0.2
Minneapolis	3.3	2.8	-1.0	-1.2	-1.3	-0.7	1.6	1.8	-2.0	-2.2	-0.6	-0.6
All Wheat	45.7	46.0	23.4	20.4	-41.2	-39.8	-18.8	-17.5	-4.5	-6.2	-4.7	-3.0
<b>CORN</b>	-138.2	-120.0	-203.1	-183.8	172.5	158.4	235.4	213.2	-34.2	-38.4	-32.3	-29.4
<b>OATS</b>	0.1	0.1	-0.1	0.0	-1.0	-0.7	-0.4	-0.4	0.9	0.6	0.5	0.5
<b>SOYBEANS</b>	-83.9	-61.5	-65.1	-44.9	117.2	93.1	91.8	71.8	-33.3	-31.6	-26.7	-26.8
<b>SOY OIL</b>	-66.3	-80.6	-119.1	-113.4	53.1	67.7	106.5	101.3	13.2	12.9	12.6	12.1
<b>SOY MEAL</b>	-152.7	-140.5	-118.6	-116.7	133.8	119.4	96.8	94.3	19.0	21.0	21.9	22.4

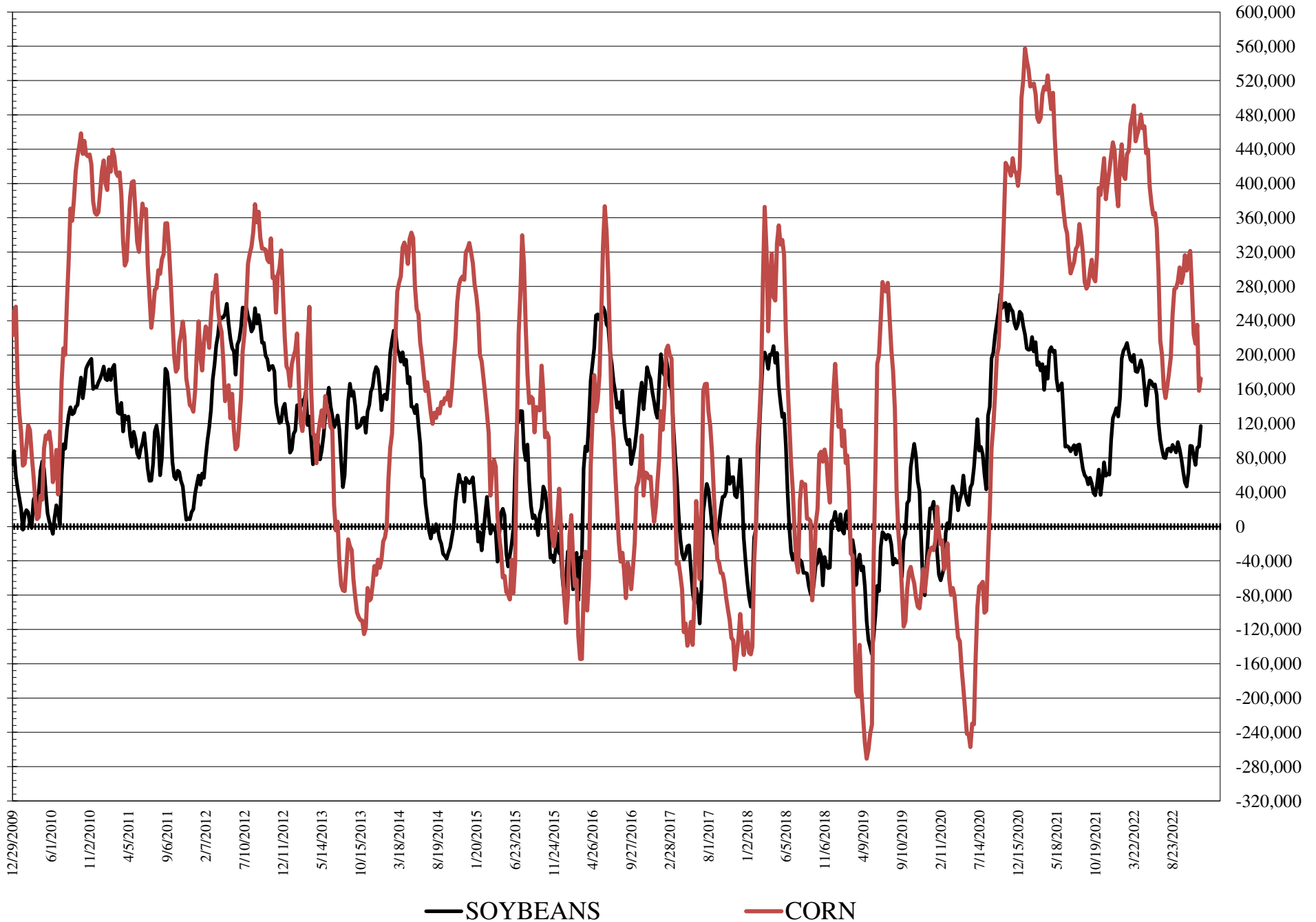
	TOTAL OPEN INTEREST				COMMERCIALS		% HELD BY TRADERS LARGE (FUNDS)		SMALL (NON-REP)	
	13-Dec	6-Dec	29-Nov	22-Nov	LONG	SHORT	LONG	SHORT	LONG	SHORT
<b>WHEAT</b>										
Chicago	405,051	404,705	367,782	443,433	38%	27%	21%	32%	9%	9%
Kansas City	165,081	159,860	154,278	165,174	45%	46%	22%	20%	12%	13%
Minneapolis	49,229	48,036	45,857	45,442	66%	60%	10%	12%	18%	22%
<b>CORN</b>	1,457,563	1,486,178	1,453,268	1,766,134	45%	54%	19%	7%	11%	13%
<b>OATS</b>	4,126	3,723	3,293	4,167						
<b>SOYBEANS</b>	744,707	719,341	721,613	718,082	46%	58%	23%	7%	7%	12%
<b>SOY OIL</b>	464,030	485,549	479,986	520,069	47%	62%	20%	8%	8%	5%
<b>SOY MEAL</b>	438,398	427,153	394,594	433,521	35%	70%	33%	3%	12%	8%

SOURCE: CFTC & FI

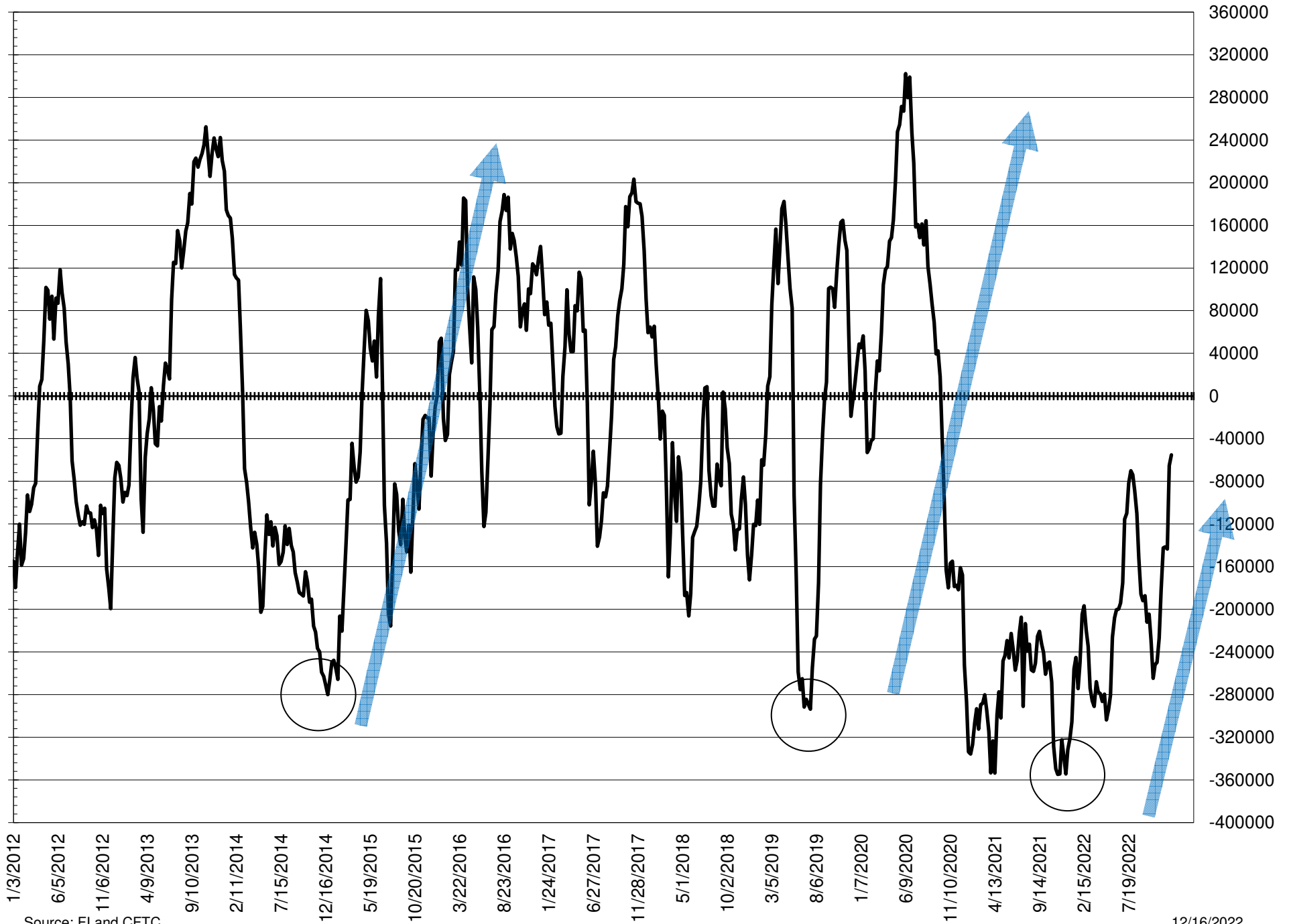
# NET POSITION FUTURES AND OPTIONS OF LARGE SPECULATORS IN SOYBEAN MEAL AND SOYBEAN OIL



# NET POSITION FUTURES AND OPTIONS OF LARGE SPECULATORS IN SOYBEANS AND CORN



# NET POSITION FUTURES AND OPTIONS SPREAD OF LARGE SPECULATORS IN SOYBEANS MINUS CORN



Source: FI and CFTC

12/16/2022

**DISAGGREGATED COMMITMENT OF TRADERS  
FUTURES ONLY NET POSITIONS  
AS OF 12/13/2022  
(IN THOUSAND CONTRACTS)**

	PRODUCER / MERCHANT / PROCESSOR / USER				(INDEX/ETF) SWAP DEALERS				(CTA/CPO/OTHER UNREGISTERED) MANAGED MONEY			
	13-Dec	6-Dec	29-Nov	22-Nov	13-Dec	6-Dec	29-Nov	22-Nov	13-Dec	6-Dec	29-Nov	22-Nov
WHEAT												
Chicago	(20.1)	(19.5)	(25.7)	(27.2)	63.0	62.3	62.7	57.8	(63.1)	(63.1)	(53.1)	(55.8)
Kansas City	(37.5)	(36.0)	(47.1)	(47.0)	33.9	34.1	35.0	33.6	8.1	9.6	16.9	17.3
Minneapolis	1.6	1.0	(2.4)	(3.0)	1.8	1.8	1.5	1.7	(3.9)	(3.0)	(1.4)	(0.7)
All Wheat	(56.0)	(54.5)	(75.3)	(77.2)	98.6	98.1	99.3	93.0	(58.9)	(56.5)	(37.6)	(39.2)
CORN	(399.8)	(390.0)	(466.7)	(451.6)	226.6	232.5	235.5	236.1	127.6	119.2	194.0	156.7
OATS	0.2	0.2	(0.0)	(0.1)	(0.1)	(0.1)	(0.1)	-	(1.8)	(1.4)	(1.1)	(1.2)
SOYBEANS	(160.4)	(132.9)	(142.3)	(128.7)	78.3	73.0	80.7	84.2	120.5	100.8	103.2	83.8
SOY OIL	(153.0)	(159.3)	(195.2)	(191.1)	84.5	80.4	78.4	79.9	50.7	60.9	104.0	100.9
SOY MEAL	(231.6)	(222.7)	(204.3)	(206.7)	79.5	81.0	82.0	85.4	115.6	98.7	74.7	72.0

Managed % of OI			
Chicago W	-19%	-19%	-17%
Corn	11%	10%	16%

	TOTAL OPEN INTEREST				OTHER REPORTABLE				NON REPORTABLE			
	13-Dec	6-Dec	29-Nov	22-Nov	13-Dec	6-Dec	29-Nov	22-Nov	13-Dec	6-Dec	29-Nov	22-Nov
WHEAT												
Chicago	335,354	334,760	310,667	352,395	23.2	23.2	19.8	28.3	(3.0)	(2.9)	(3.7)	(3.1)
Kansas City	151,174	146,353	142,738	147,905	(3.2)	(4.9)	(3.2)	(3.2)	(1.3)	(2.8)	(1.5)	(0.7)
Minneapolis	47,865	46,603	44,829	43,111	2.6	2.5	3.1	2.6	(2.0)	(2.2)	(0.7)	(0.6)
All Wheat	534,393	527,716	498,234	543,411	22.6	20.7	19.6	27.7	(6.3)	(7.9)	(5.9)	(4.4)
CORN	1,205,259	1,232,307	1,226,410	1,362,664	84.6	79.2	76.3	92.0	(39.0)	(40.8)	(39.1)	(33.3)
OATS	4,103	3,706	3,274	4,071	0.8	0.7	0.8	0.8	0.9	0.6	0.5	0.5
SOYBEANS	638,744	622,200	634,754	623,227	(7.4)	(11.1)	(16.0)	(13.6)	(31.0)	(29.8)	(25.7)	(25.8)
SOY OIL	410,837	434,000	444,650	450,896	5.0	5.5	(0.2)	(1.4)	12.9	12.6	13.0	11.7
SOY MEAL	392,236	388,478	369,599	395,596	17.9	23.5	27.7	29.0	18.6	19.6	19.9	20.2

SOURCE: CFTC & FI

**DISAGGREGATED COMMITMENT OF TRADERS  
FUTURES & OPTIONS NET POSITIONS  
AS OF 12/13/2022  
(IN THOUSAND CONTRACTS)**

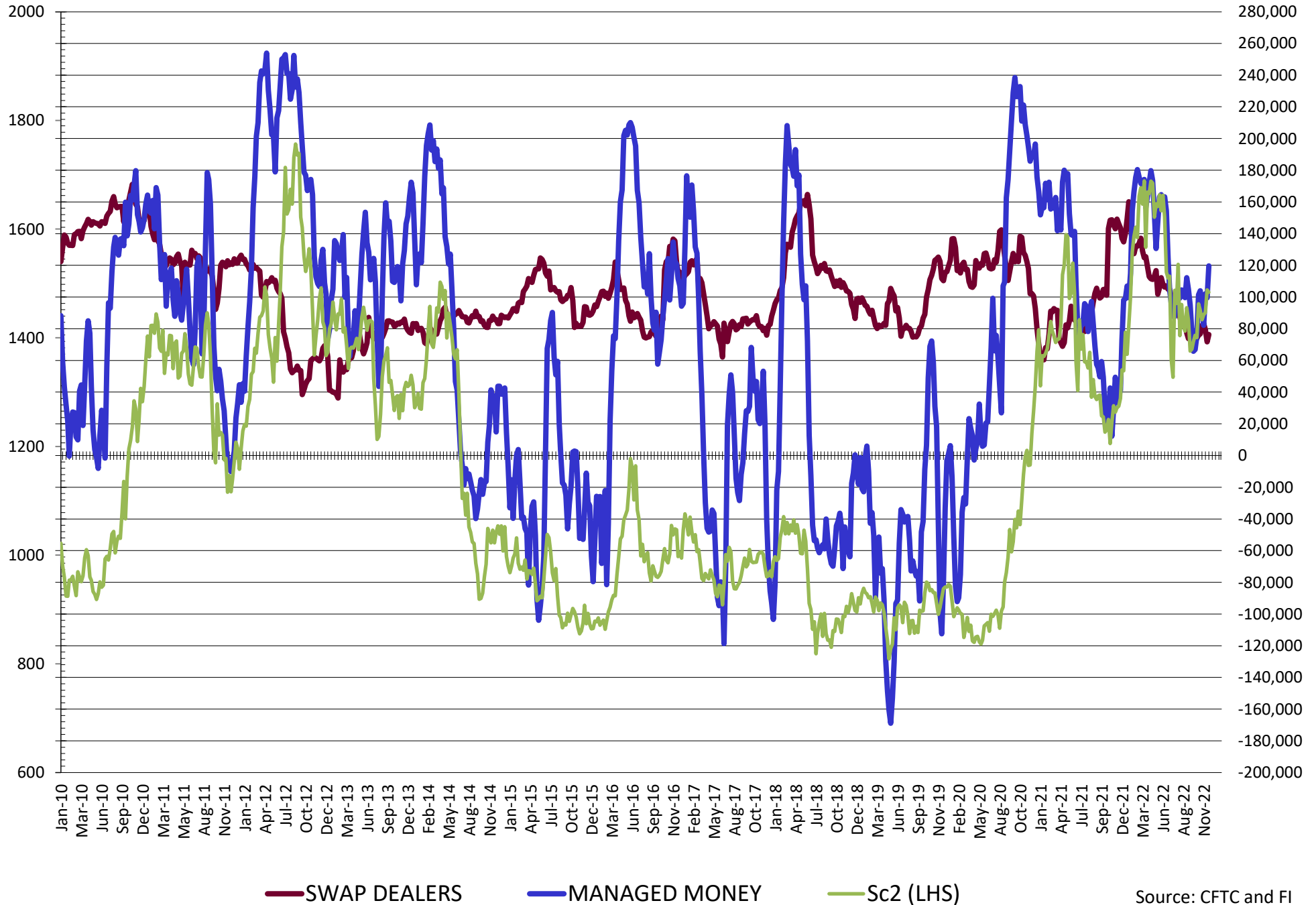
	PRODUCER / MERCHANT / PROCESSOR / USER				(INDEX/ETF) SWAP DEALERS				(CTA/CPO/OTHER UNREGISTERED) MANAGED MONEY			
	13-Dec	6-Dec	29-Nov	22-Nov	13-Dec	6-Dec	29-Nov	22-Nov	13-Dec	6-Dec	29-Nov	22-Nov
	WHEAT											
Chicago	(20.2)	(20.5)	(28.6)	(28.7)	64.7	63.9	64.3	64.1	(63.0)	(63.4)	(54.1)	(53.4)
Kansas City	(36.8)	(35.4)	(46.8)	(46.9)	34.7	35.1	35.5	33.2	8.5	9.7	17.1	17.3
Minneapolis	1.5	1.1	(2.5)	(2.9)	1.8	1.8	1.5	1.7	(3.9)	(3.0)	(1.4)	(0.7)
All Wheat	(55.5)	(54.8)	(77.9)	(78.5)	101.2	100.8	101.3	98.9	(58.4)	(56.7)	(38.4)	(36.7)
CORN	(367.8)	(356.6)	(440.9)	(420.5)	229.5	236.6	237.8	236.7	127.1	120.2	191.6	170.8
OATS	0.2	0.2	(0.0)	(0.0)	(0.1)	(0.1)	(0.1)	0.0	(1.8)	(1.4)	(1.1)	(1.2)
SOYBEANS	(160.1)	(133.2)	(144.4)	(128.2)	76.3	71.7	79.3	83.2	119.6	99.5	102.1	82.1
SOY OIL	(150.7)	(161.0)	(199.0)	(197.4)	84.4	80.4	79.9	84.0	53.3	62.6	105.5	100.3
SOY MEAL	(231.4)	(221.0)	(201.6)	(203.3)	78.7	80.5	82.9	86.7	114.5	98.5	74.9	71.8

	TOTAL OPEN INTEREST				OTHER REPORTABLE				NON REPORTABLE			
	13-Dec	6-Dec	29-Nov	22-Nov	13-Dec	6-Dec	29-Nov	22-Nov	13-Dec	6-Dec	29-Nov	22-Nov
	WHEAT											
Chicago	405,051	404,705	367,782	443,433	20.1	21.5	21.0	20.3	(1.6)	(1.5)	(2.7)	(2.2)
Kansas City	165,081	159,860	154,278	165,174	(5.6)	(7.0)	(4.5)	(3.4)	(0.9)	(2.5)	(1.4)	(0.2)
Minneapolis	49,229	48,036	45,857	45,442	2.7	2.4	3.0	2.4	(2.0)	(2.2)	(0.6)	(0.6)
All Wheat	619,361	612,601	567,917	654,049	17.2	16.9	19.6	19.3	(4.5)	(6.2)	(4.7)	(3.0)
CORN	1,457,563	1,486,178	1,453,268	1,766,134	45.4	38.2	43.8	42.4	(34.2)	(38.4)	(38.4)	(38.4)
OATS	4,126	3,723	3,293	4,167	0.8	0.7	0.8	0.7	0.9	0.6	0.5	0.5
SOYBEANS	744,707	719,341	721,613	718,082	(2.4)	(6.4)	(10.3)	(10.3)	(33.3)	(31.6)	(26.7)	(26.8)
SOY OIL	464,030	485,549	479,986	520,069	(0.3)	5.1	1.0	1.0	13.2	12.9	12.6	12.1
SOY MEAL	438,398	427,153	394,594	433,521	19.3	20.9	21.9	22.5	19.0	21.0	21.9	22.4

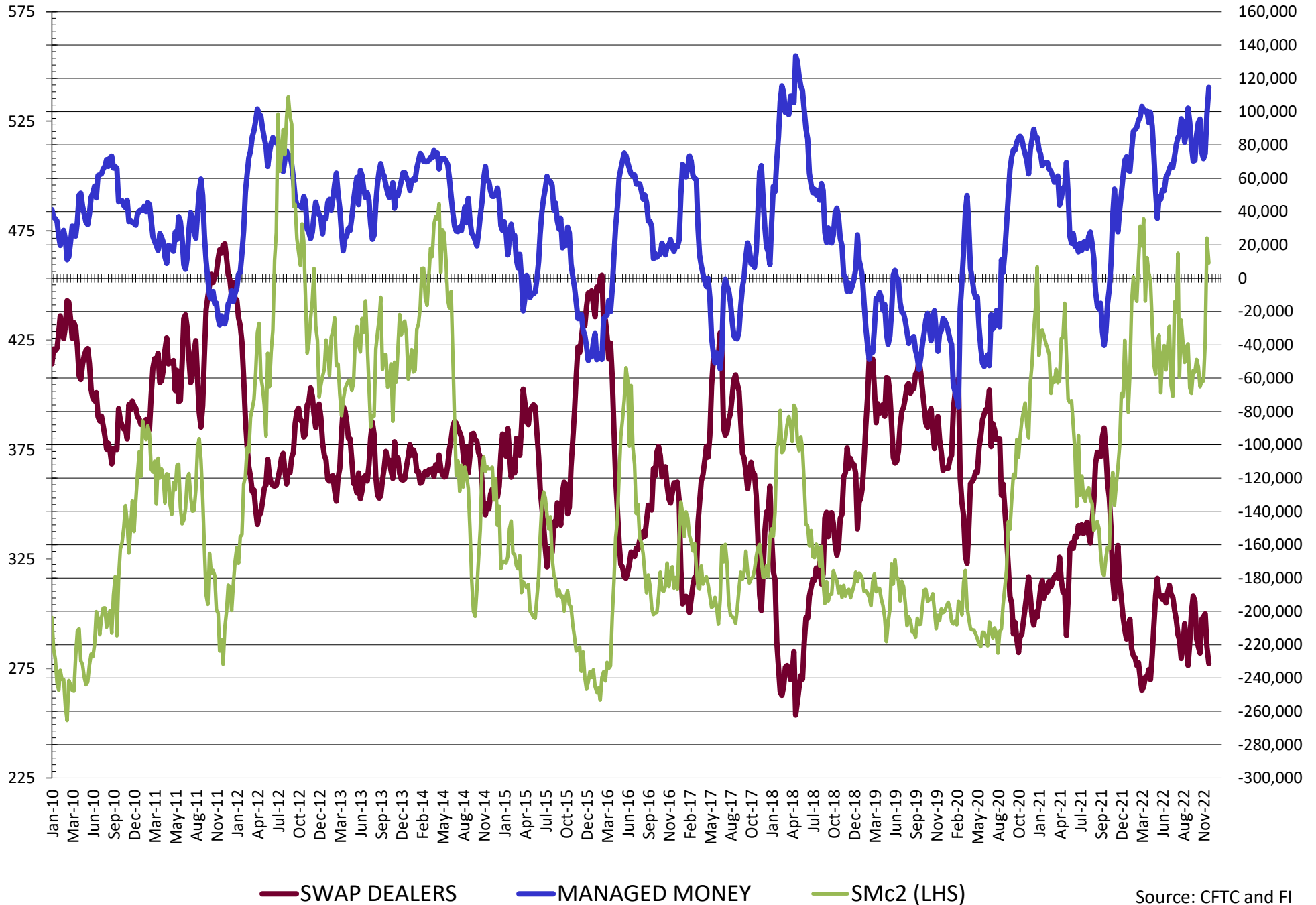
SOURCE: CFTC & FI



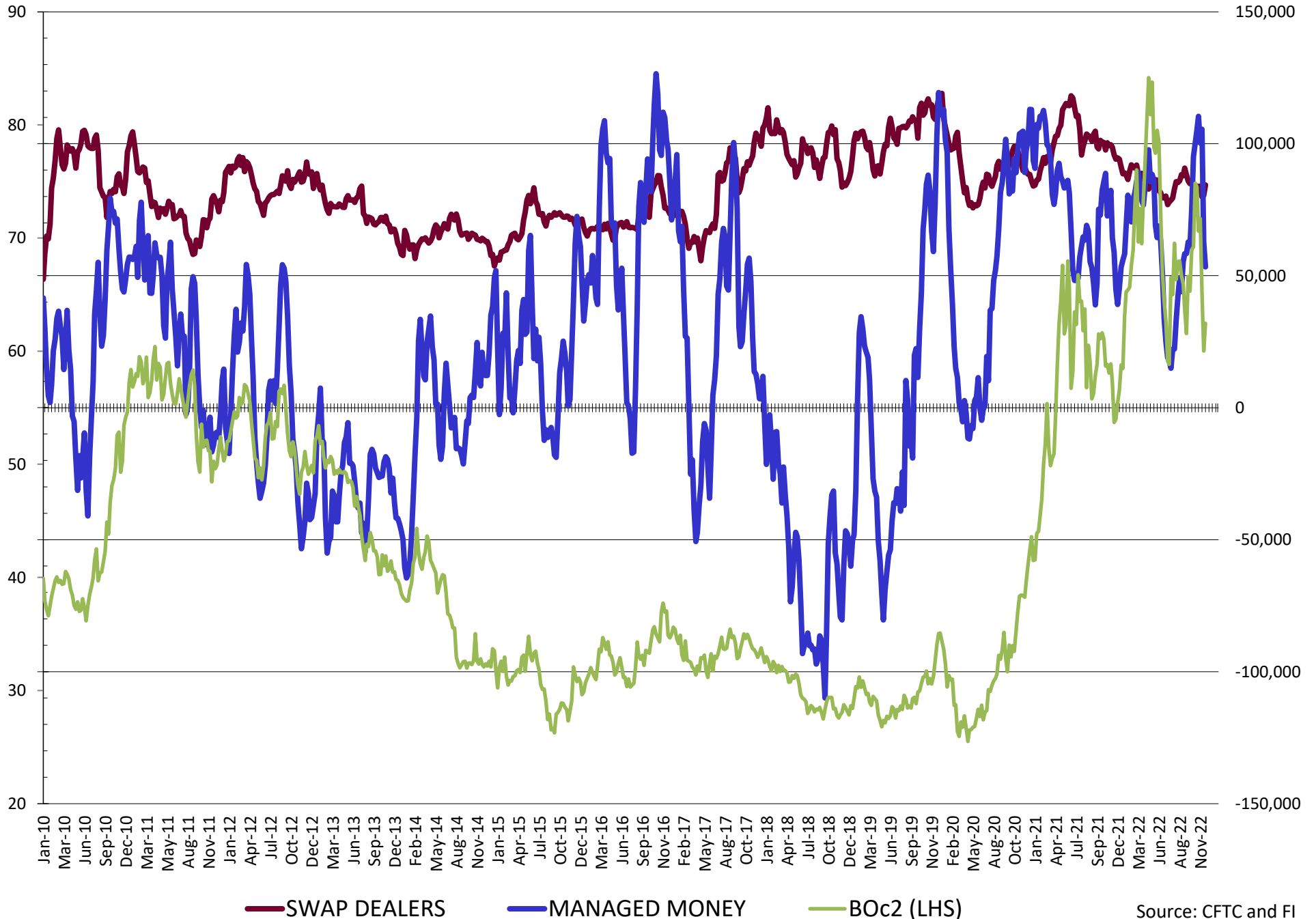
# NET POSITION FUTURES AND OPTIONS OF SWAP AND MANAGED FUNDS IN SOYBEANS



# NET POSITION FUTURES AND OPTIONS OF SWAP AND MANAGED FUNDS IN SOYBEAN MEAL

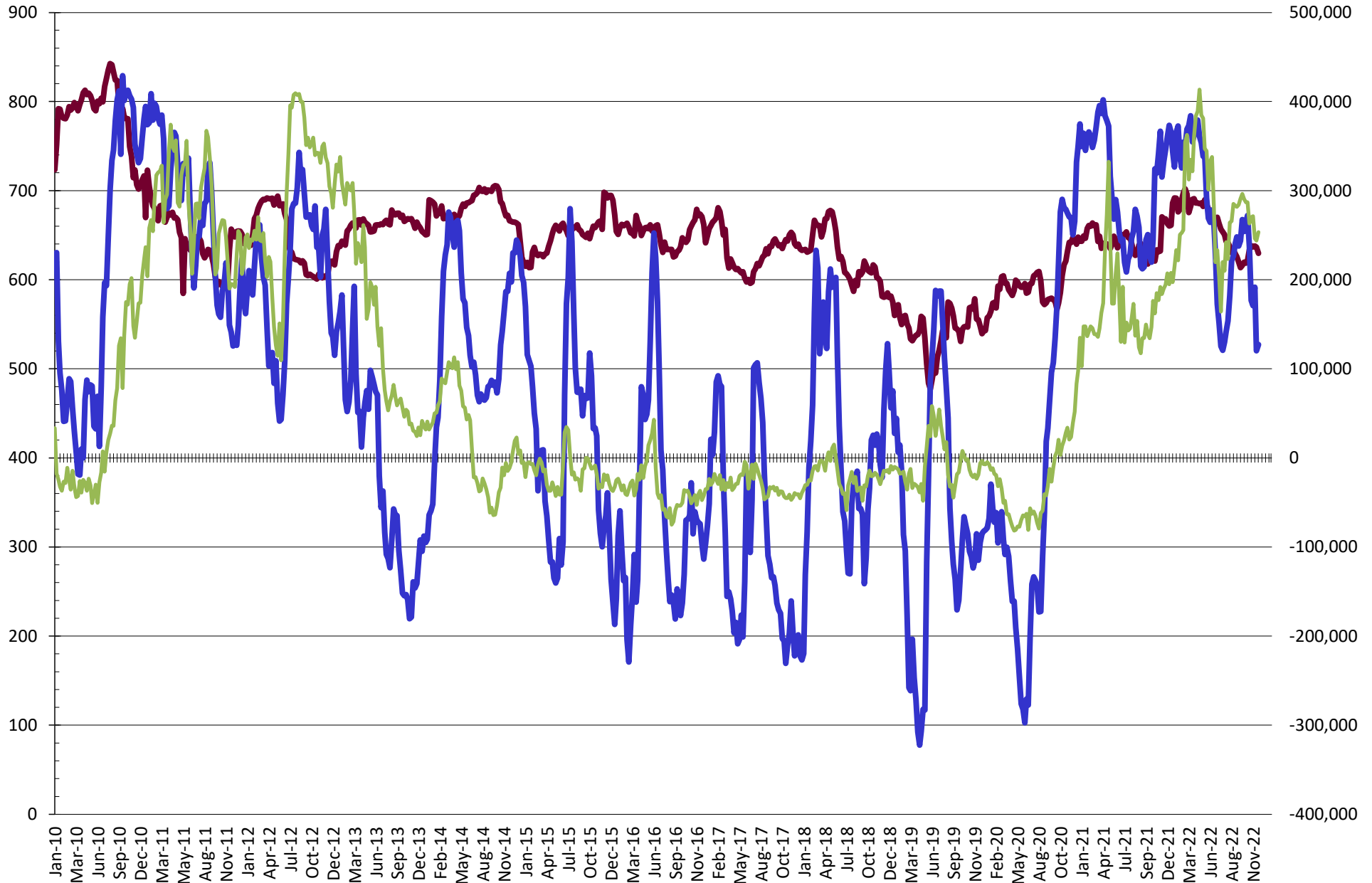


# NET POSITION FUTURES AND OPTIONS OF SWAP AND MANAGED FUNDS IN SOYBEAN OIL



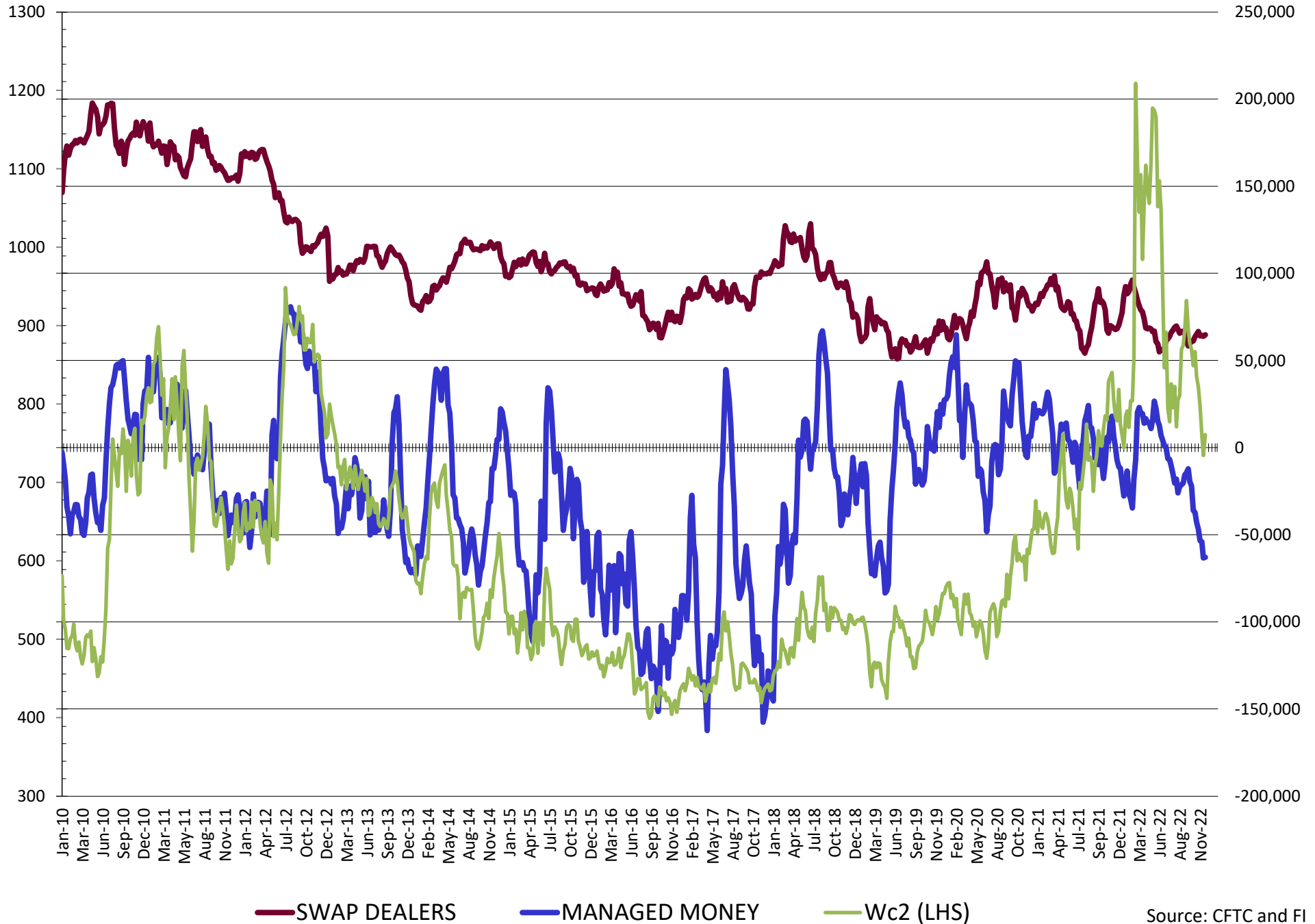
Source: CFTC and FI  
12/16/2022

# NET POSITION FUTURES AND OPTIONS OF SWAP AND MANAGED FUNDS IN CORN

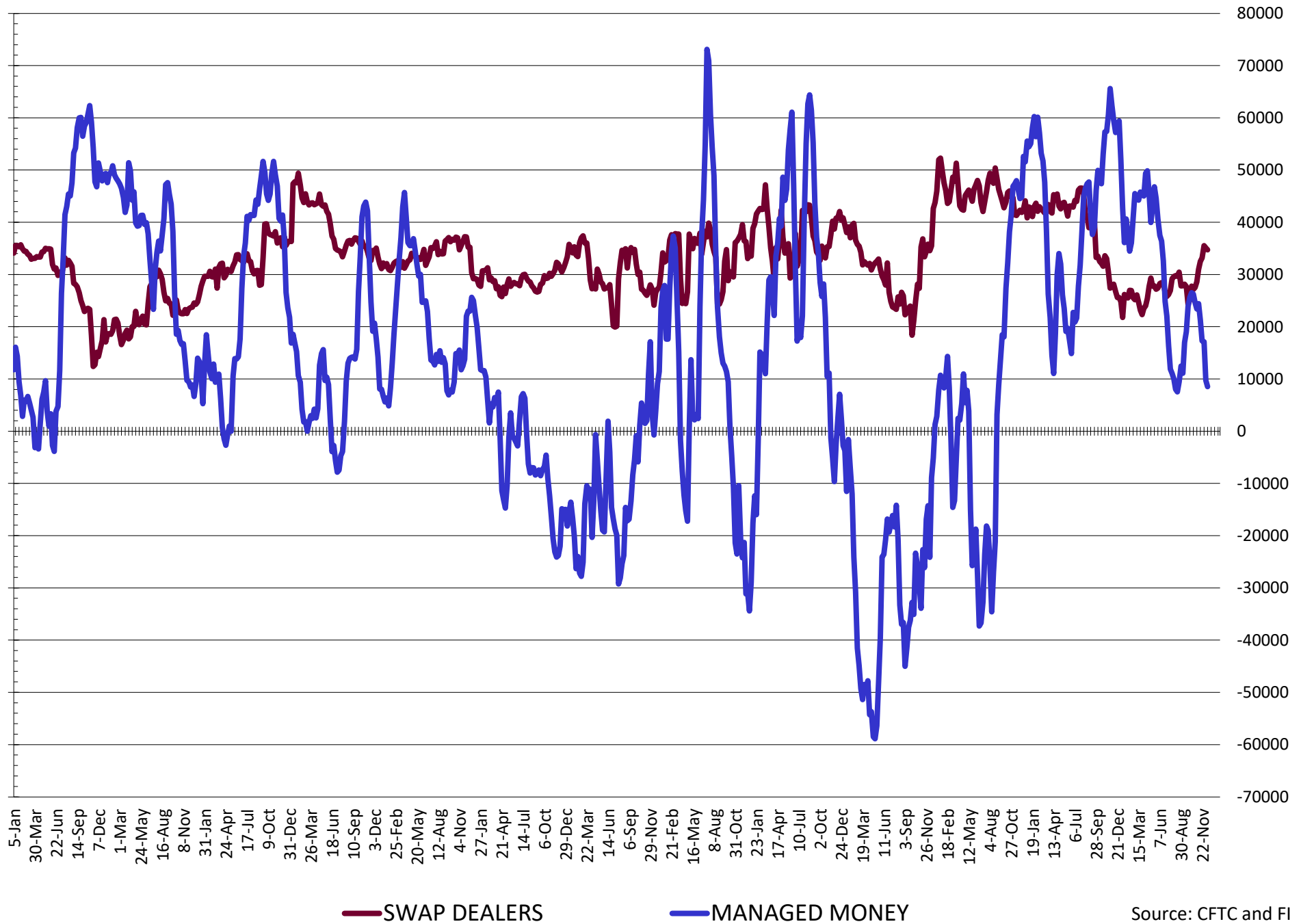


— SWAP DEALERS     
 — MANAGED MONEY     
 — Cc2 (LHS)

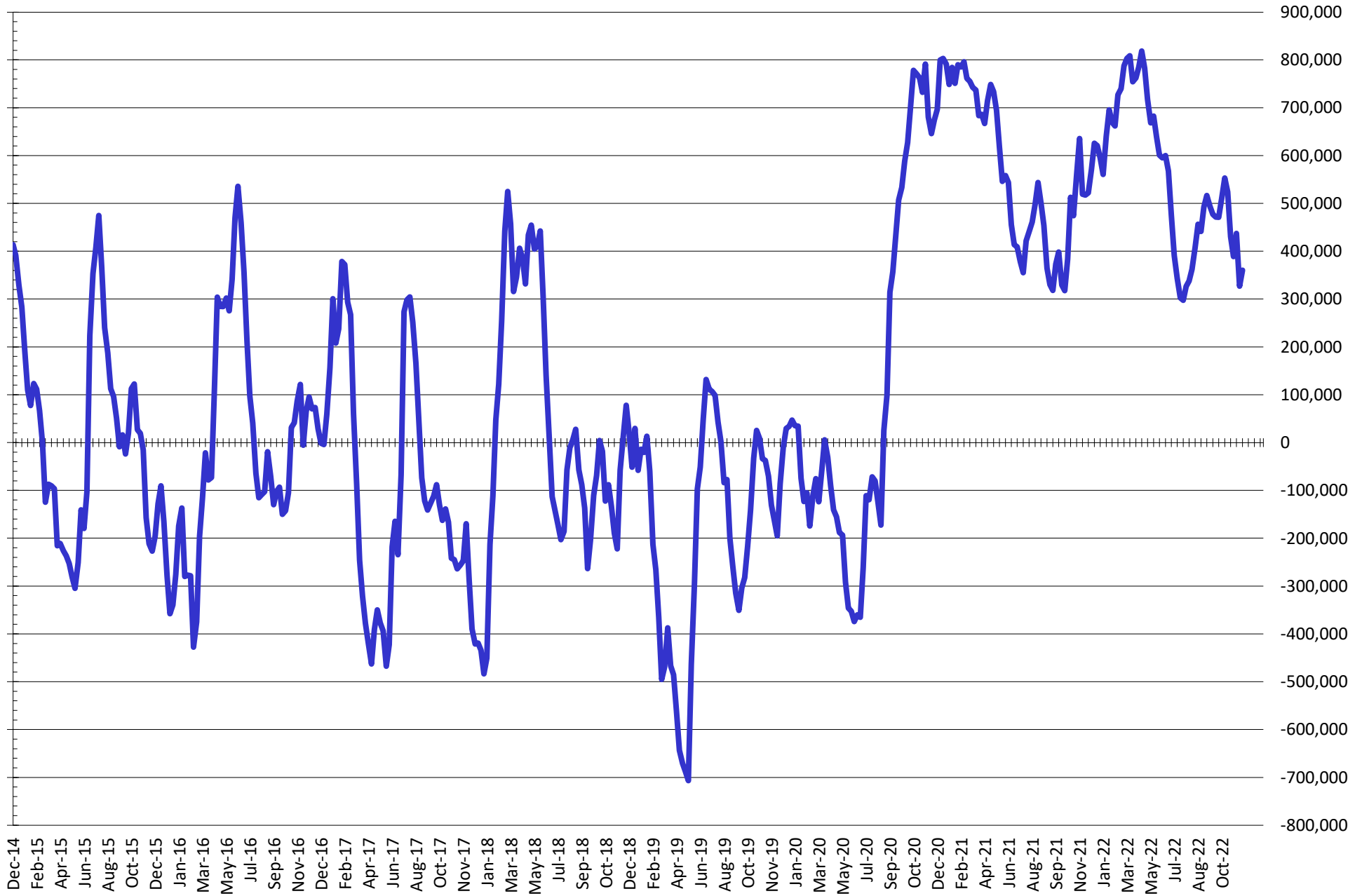
# NET POSITION FUTURES AND OPTIONS OF SWAP AND MANAGED FUNDS IN CHICAGO WHEAT



# NET POSITION FUTURES AND OPTIONS OF SWAP DEALERS AND MANAGED FUNDS IN KANSAS WHEAT



# NET POSITION FUTURES AND OPTIONS OF SWAP AND MANAGED FUNDS IN COMBINED SRW, HRW, CORN, SOYBEANS, SOYMEAL AND SOYOIL



— Net Managed Money

**COMMITMENT OF TRADERS**  
**FUTURES & OPTIONS NET POSITIONS (INDEX BROKEN OUT)**  
**AS OF 12/13/2022**  
(IN THOUSAND CONTRACTS)

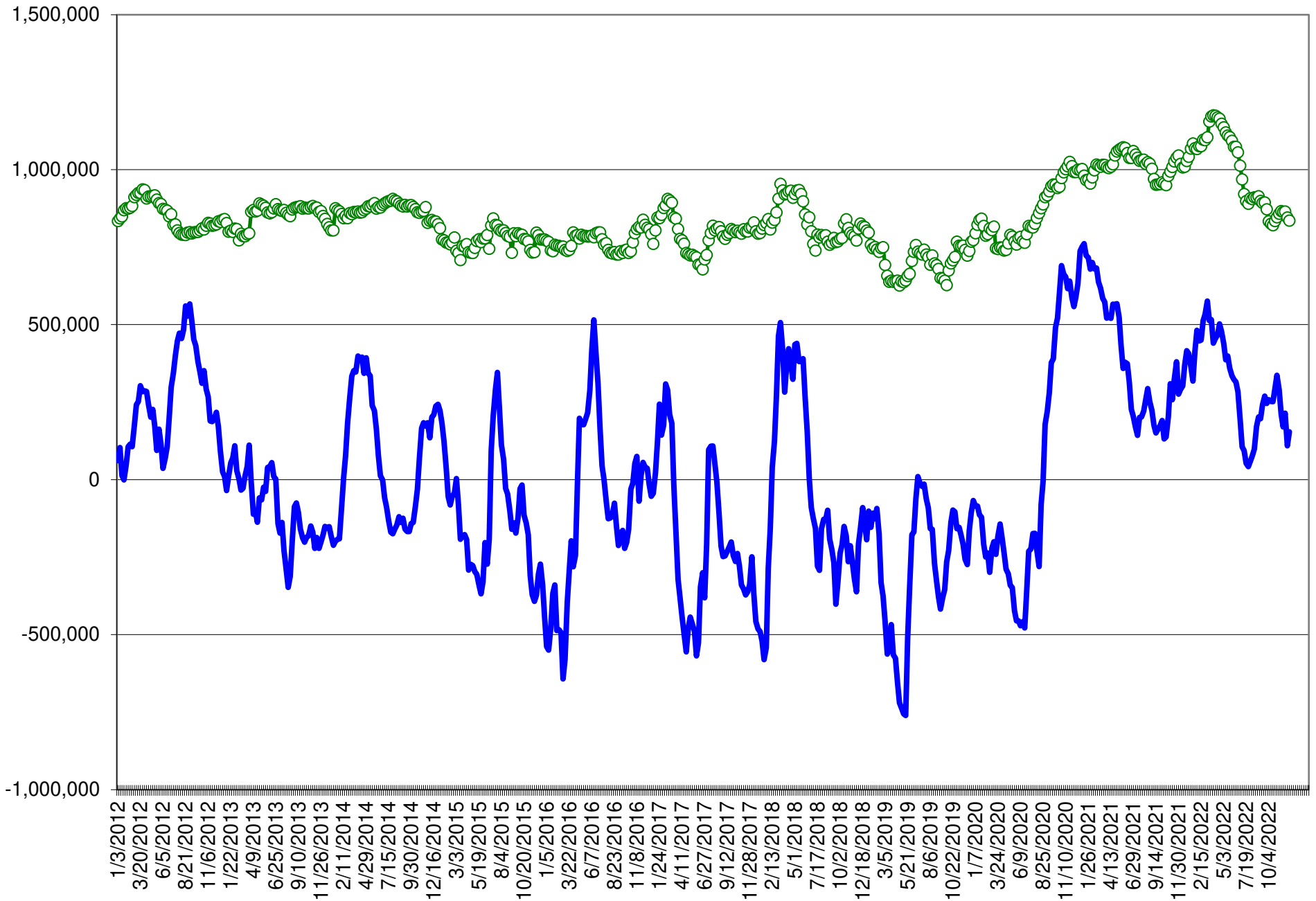
	COMMERCIAL				(FUND) NON COMMERCIAL				(SPEC) NON-REPORTABLE			
	13-Dec	6-Dec	29-Nov	22-Nov	13-Dec	6-Dec	29-Nov	22-Nov	13-Dec	6-Dec	29-Nov	22-Nov
	WHEAT											
Chicago	(25.3)	(26.5)	(34.7)	(35.6)	(71.2)	(71.8)	(65.4)	(65.7)	(1.6)	(1.5)	(2.7)	(2.2)
Kansas City	(35.5)	(33.7)	(45.4)	(46.2)	(9.9)	(10.3)	(1.0)	0.1	(0.9)	(2.5)	(1.4)	(0.2)
Minneapolis	-	-	-	-	-	-	-	-	-	-	-	-
All Wheat	(60.8)	(60.2)	(80.1)	(81.8)	(81.1)	(82.1)	(66.4)	(65.6)	(2.5)	(4.0)	(4.1)	(2.4)
CORN	(365.7)	(352.9)	(440.3)	(421.7)	53.1	32.8	109.4	91.4	(34.2)	(38.4)	(32.3)	(29.4)
OATS	-	-	-	-	-	-	-	-	-	-	-	-
SOYBEANS	(169.3)	(142.1)	(152.9)	(135.1)	78.0	53.7	52.2	31.2	(33.3)	(31.6)	(26.7)	(26.8)
SOY OIL	(131.0)	(145.1)	(185.8)	(180.9)	18.8	32.9	67.6	62.8	13.2	12.9	12.6	12.1
SOY MEAL	(225.2)	(214.2)	(191.2)	(189.5)	85.5	71.6	51.2	50.0	19.0	21.0	21.9	22.4

	TOTAL OPEN INTEREST				(INDEX) COMMERCIAL INDEX TRADERS				(INDEX) % NET OF TOTAL OPEN INTEREST			
	13-Dec	6-Dec	29-Nov	22-Nov	13-Dec	6-Dec	29-Nov	22-Nov	13-Dec	6-Dec	29-Nov	22-Nov
	WHEAT											
Chicago	405,051	404,705	367,782	443,433	98.1	99.8	102.8	103.5	24.2%	24.7%	27.9%	23.3%
Kansas City	165,081	159,860	154,278	165,174	46.3	46.5	47.8	46.3	28.1%	29.1%	31.0%	28.0%
Minneapolis	-	-	-	-	-	-	-	-	-	-	-	-
All Wheat	570,132	564,565	522,060	608,607	144.4	146.3	150.6	149.7	25.3%	25.9%	28.8%	24.6%
CORN	1,457,563	1,486,178	1,453,268	1,766,134	346.8	358.5	363.2	359.7	23.8%	24.1%	25.0%	20.4%
OATS	-	-	-	-	-	-	-	-	-	-	-	-
SOYBEANS	744,707	719,341	721,613	718,082	124.6	120.0	127.4	130.8	16.7%	16.7%	17.7%	18.2%
SOY OIL	464,030	485,549	479,986	520,069	98.9	99.3	105.6	106.0	21.3%	20.4%	22.0%	20.4%
SOY MEAL	438,398	427,153	394,594	433,521	120.8	121.5	118.1	117.1	27.6%	28.5%	29.9%	27.0%

SOURCE: CFTC & FI



# NET POSITION FUTURES AND OPTIONS OF SPECULATORS AND INDEX FUNDS IN COMBINED SRW, HRW, CORN, SOYBEANS, SOYMEAL AND SOYOIL



Source: CFTC and FI

○ Net Index

— Net Speculator

## Traditional Daily Estimate of Funds 12/13/22

	(Neg)-"Short"	Pos-"Long"			
Actual less Est.	2.8	14.4	(11.0)	4.3	(13.7)
	<b>Corn</b>	<b>Bean</b>	<b>Chi. Wheat</b>	<b>Meal</b>	<b>Oil</b>
<b>Actual</b>	212.2	113.1	(39.9)	133.5	55.6
14-Dec	(3.0)	2.0	(1.0)	4.0	(1.0)
15-Dec	2.0	(4.0)	4.0	(3.0)	1.0
16-Dec	(1.0)	4.0	(2.0)	3.0	(2.0)
19-Dec					
20-Dec					
<b>FI Est. of Futures Only 11/15/22</b>	<b>210.2</b>	<b>115.1</b>	<b>(38.9)</b>	<b>137.5</b>	<b>53.6</b>
<b>FI Est. Futures &amp; Options</b>	<b>170.4</b>	<b>119.2</b>	<b>(41.9)</b>	<b>137.7</b>	<b>51.0</b>
Futures only record long "Traditional Funds"	547.7 1/26/2021	280.9 11/10/2020	86.5 8/7/2018	167.5 5/1/2018	160.2 11/1/2016
Futures only record short	(235.0) 6/9/2020	(118.3) 4/30/2019	(130.0) 4/25/2017	(49.5) 3/1/2016	(69.8) 9/18/2018
Futures and options record net long	557.6 1/12/2021	270.9 10/6/2020	64.8 8/7/2012	132.1 5/1/2018	159.2 1/1/2016
Futures and options record net short	(270.6) 4/26/2019	(132.0) 4/30/2019	(143.3) 4/25/2017	(64.1) 3/1/2016	(77.8) 9/18/2018

## Managed Money Daily Estimate of Funds 11/15/22

	Corn	Bean	Chi. Wheat	Meal	Oil
Latest CFTC Fut. Only	127.6	120.5	(63.1)	115.6	50.7
Latest CFTC F&O	127.1	119.6	(63.0)	114.5	53.3
	Corn	Bean	Chi. Wheat	Meal	Oil
FI Est. Managed Fut. Only	126	122	(62)	120	49
FI Est. Managed Money F&O	125	122	(62)	118	51

## Index Funds Latest Positions (as of last Tuesday)

Index Futures & Options	346.8	124.6	98.1	NA	98.9
Change From Previous Week	(11.7)	4.6	(1.8)	NA	(0.4)

Source: Reuters, CFTC & FI (FI est. are noted with latest date)

# Disclaimer

TO CLIENTS/PROSPECTS OF FUTURES INTERNATIONAL, SEE RISK DISCLOSURE BELOW:

THIS COMMUNICATION IS CONVEYED AS A SOLICITATION FOR ENTERING INTO A DERIVATIVES TRANSACTION.

Any trading recommendations and market or other information to Customer by Futures International (FI), although based upon information obtained from sources believed by FI to be reliable may not be accurate and may be changed without notice to customer. FI makes no guarantee as to the accuracy or completeness of any of the information or recommendations furnished to Customer. Customer understands that FI, its managers, employees and/or affiliates may have a position in commodity futures, options or other derivatives which may not be consistent with the recommendations furnished by FI to Customer.

The risk of trading futures and options and other derivatives involves a substantial risk of loss and is not suitable for all persons. In purchasing an option, the risk is limited to the premium paid, and all commissions and fees involved with the trade. When an option is shorted or written, the writer of the option has unlimited risk with respect to the option written. The use of options strategies such as a straddles and strangles involve multiple option positions and may substantially increase the amount of commissions and fees paid to execute the strategy. Option prices do not necessarily move in tandem with cash or futures prices. Each person must consider whether a particular trade, combination of trades or strategy is suitable for that person's financial means and objectives.

This material may include discussions of seasonal patterns, however, futures prices have already factored in the seasonal aspects of supply and demand, and seasonal patterns are no indication of future market trends. Finally, past performance is not indicative of future results.

This communication may contain links to third party websites which are not under the control of FI and FI is not responsible for their content. Products and services are offered only in jurisdictions where solicitation and sale are lawful, and in accordance with applicable laws and regulations in each such jurisdiction.