

US Weekly Ethanol By PADD

Ethanol Stocks	16-Dec	9-Dec	Change	Weekly	4-Week	YOY
	2022	2022		Percent	Percent	Percent
Total Stocks	24067	24409	(342)	-1.4%	4.9%	16.2%
East Coast PADD 1	7527	7470	57	0.8%	8.0%	25.7%
Midwest PADD 2	9160	9337	(177)	-1.9%	-2.1%	12.5%
Gulf Coast PADD 3	4318	4359	(41)	-0.9%	10.2%	15.8%
Rocky Mt. PADD 4	305	320	(15)	-4.7%	-5.3%	-22.6%
West Coast PADD 5	2756	2923	(167)	-5.7%	16.8%	12.4%
Plant Production	16-Dec	9-Dec	Change	Weekly	4-Week	Percent
	2022	2022		Percent	Percent	Percent
Total Production	1029	1061	(32)	-3.0%	1.1%	-2.1%
East Coast PADD 1	12	12	0	0.0%	0.0%	
Midwest PADD 2	975	1001	(26)	-2.6%	1.4%	-1.6%
Gulf Coast PADD 3	20	25	(5)	-20.0%	0.0%	
Rocky Mt. PADD 4	14	15	(1)	-6.7%	0.0%	
West Coast PADD 5	8	8	0	0.0%	-11.1%	

Source: EIA and FI

Source: EIA and FI

Page 1	Weekly Ethanol Snapshot	Page 12	Net Ethanol Blend
Page 2	Ethanol Table	Page 13	Selected Commodities Indexed vs. WTI \$
Page 3	Production Chart	Page 14	Ethanol-RBOB
Page 4	Production and Stocks	Page 15	Ethanol Crush with implied costs
Page 5	Ethanol Stocks	Page 16	Chicago Ethanol with straight corn crush
Page 6	PADD Ethanol Stocks	Page 17	CBOT corn crush with IL DDGS
Page 7	Gasoline Ethanol Stocks	Page 18	Disclaimer
Page 8	Gasoline Supplied		
Page 9	Ethanol Imports		
Page 10	US Annualized Implied Corn Use		
Page 11	Net Ethanol Consumption		

Source: Reuters, Bloomberg, EIA, CME and FI

Created by Terry Reilly

Futures International

treilly@futures-int.com

US Weekly Petroleum Status Report

	Ethanol Production 000 Barrels Per Day	Change from Last Week	Change from Last Month	Change from Last Year	Ethanol Stocks 000 Barrels	Change from Last Week	Change from Last Month	Change from Last Year	Days of Ethanol Inventory
4/1/2022	1003	(33)	-2.4%	2.9%	25,903	(626)	2.5%	25.5%	26.4
4/8/2022	995	(8)	-3.0%	5.7%	24,803	(1100)	-4.4%	20.9%	26.0
4/15/2022	947	(48)	-9.1%	0.6%	24,342	(461)	-6.9%	19.0%	26.2
4/22/2022	963	16	-7.0%	1.9%	23,965	(377)	-9.7%	21.4%	25.3
4/29/2022	969	6	-3.4%	1.8%	23,887	(78)	-7.8%	16.9%	24.7
5/6/2022	991	22	-0.4%	1.2%	24,140	253	-2.7%	24.5%	24.1
5/13/2022	991	0	4.6%	-4.0%	23,791	(349)	-2.3%	22.4%	24.4
5/20/2022	1014	23	5.3%	0.3%	23,712	(79)	-1.1%	24.9%	23.5
5/27/2022	1071	57	10.5%	3.6%	22,961	(751)	-3.9%	17.2%	22.1
6/3/2022	1039	(32)	4.8%	-2.6%	23,636	675	-2.1%	18.4%	22.1
6/10/2022	1060	21	7.0%	3.4%	23,197	(439)	-2.5%	12.6%	22.3
6/17/2022	1055	(5)	4.0%	0.7%	23,476	279	-1.0%	11.2%	22.0
6/24/2022	1051	(4)	-1.9%	-0.7%	22,746	(730)	-0.9%	5.4%	22.3
7/1/2022	1044	(7)	0.5%	-2.2%	23,490	744	-0.6%	11.1%	21.8
7/8/2022	1005	(39)	-5.2%	-3.5%	23,606	116	1.8%	11.7%	23.4
7/15/2022	1034	29	-2.0%	0.6%	23,553	(53)	0.3%	4.6%	22.8
7/22/2022	1021	(13)	-2.9%	0.7%	23,328	(225)	2.6%	2.6%	23.1
7/29/2022	1043	22	-0.1%	3.0%	23,394	66	-0.4%	3.3%	22.4
8/5/2022	1022	(21)	1.7%	3.7%	23,256	(138)	-1.5%	4.4%	22.9
8/12/2022	983	(39)	-4.9%	1.0%	23,446	190	-0.5%	8.8%	23.7
8/19/2022	987	4	-3.3%	5.8%	23,807	361	2.1%	12.2%	23.8
8/26/2022	970	(17)	-7.0%	7.2%	23,533	(274)	0.6%	11.5%	24.5
9/2/2022	989	19	-3.2%	7.2%	23,138	(395)	-0.5%	13.5%	23.8
9/9/2022	963	(26)	-2.0%	2.8%	22,843	(295)	-2.6%	14.2%	24.0
9/16/2022	901	(62)	-8.7%	-2.7%	22,501	(342)	-5.5%	11.9%	25.4
9/23/2022	855	(46)	-11.9%	-6.5%	22,691	190	-3.6%	12.2%	26.3
9/30/2022	889	34	-10.1%	-9.1%	21,685	(1006)	-6.3%	8.8%	25.5
10/7/2022	932	43	-3.2%	-9.7%	21,863	178	-4.3%	10.2%	23.3
10/14/2022	1016	84	12.8%	-7.3%	21,844	(19)	-2.9%	8.8%	21.5
10/21/2022	1033	17	20.8%	-6.6%	22,291	447	-1.8%	11.9%	21.1
10/28/2022	1040	7	17.0%	-6.1%	22,232	(59)	2.5%	10.4%	21.4
11/4/2022	1051	11	12.8%	1.2%	22,192	(40)	1.5%	9.4%	21.2
11/11/2022	1011	(40)	-0.5%	-4.6%	21,298	(894)	-2.5%	6.1%	22.0
11/18/2022	1041	30	0.8%	-3.5%	22,829	1531	2.4%	13.2%	20.5
11/25/2022	1018	(23)	-2.1%	-1.6%	22,934	105	3.2%	13.0%	22.4
12/2/2022	1077	59	2.5%	-1.2%	23,257	323	4.8%	13.6%	21.3
12/9/2022	1061	(16)	4.9%	-2.4%	24,409	1152	14.6%	16.9%	21.9
12/16/2022	1029	(32)	-1.2%	-2.1%	24,067	(342)	5.4%	16.2%	23.7

4-week average change: -3

4-week average change: 310

YOY Δ

CY 21-22 1024 2021-22 season average

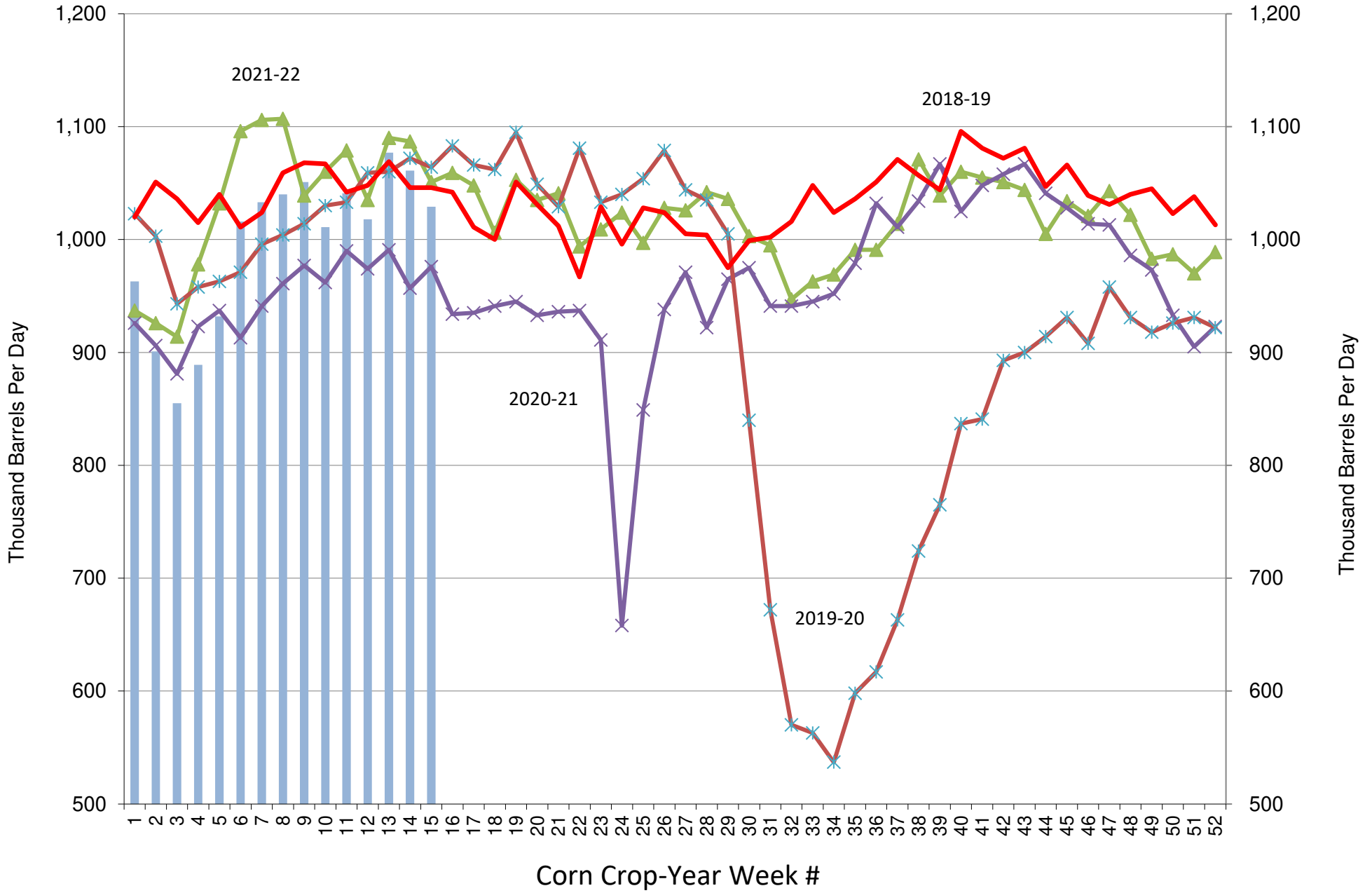
6.8%

CY to Date: 997 2022-23 season average

-2.7%

Source: Reuters, EIA, FI

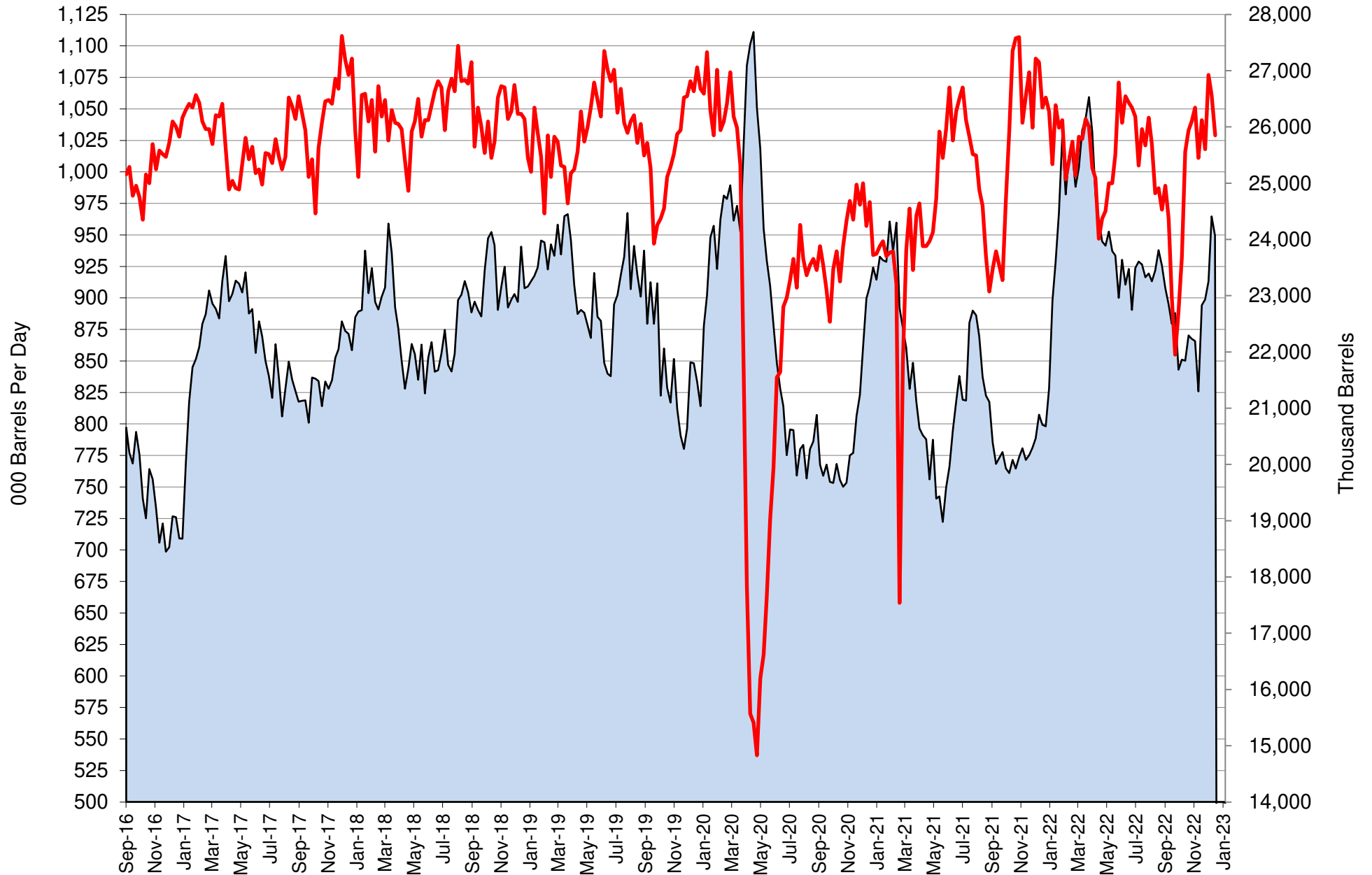
US Weekly Ethanol Production



Source: EIA & FI

■ 2022-23
 ▲ 2021-22
 ✕ 2020-21
 ✕ 2019-20
 — 2018-19

US Weekly Ethanol Production and Stocks

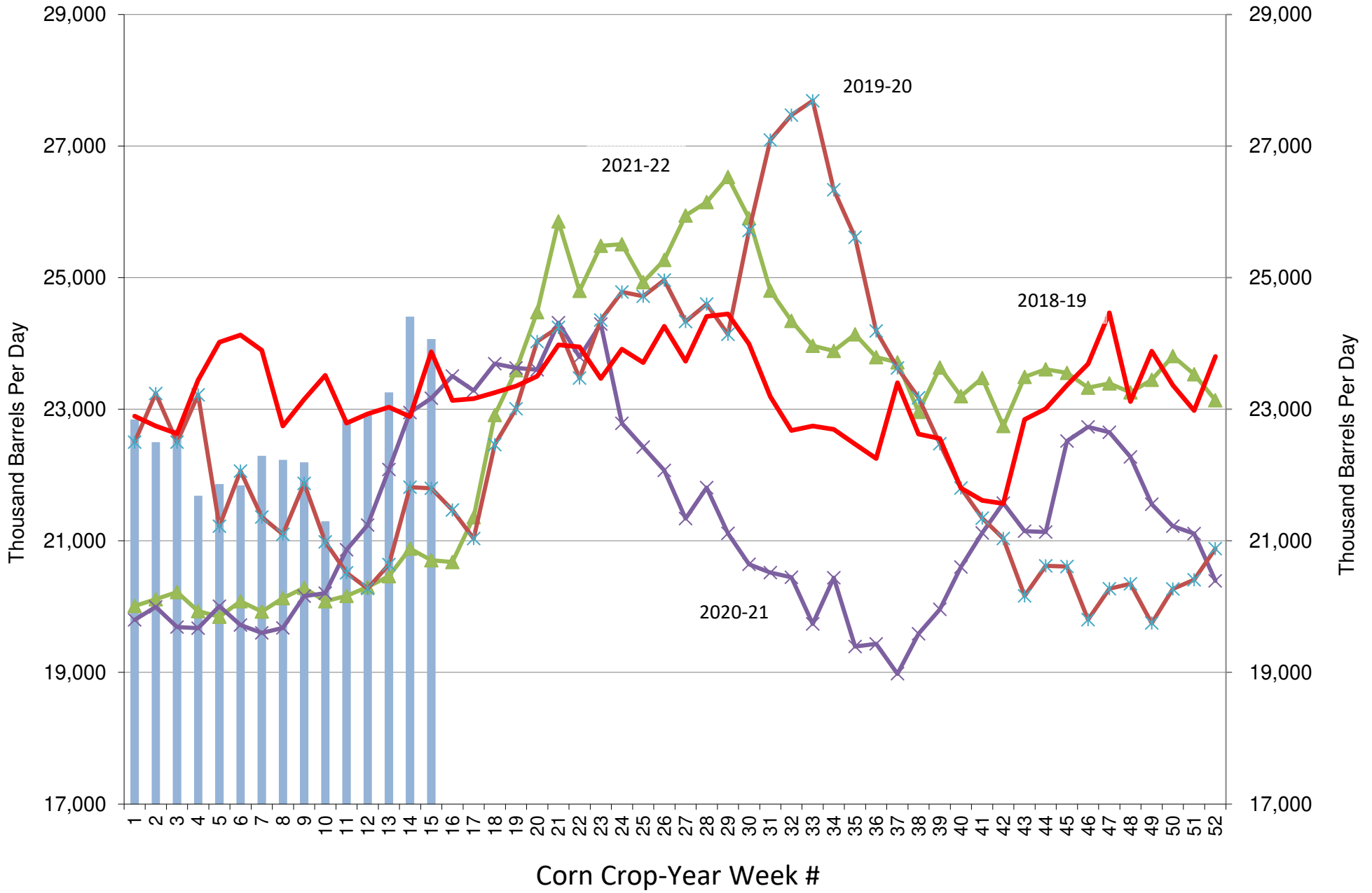


Source: EIA & FI

Stocks (1000bd)

Production (1000bd)

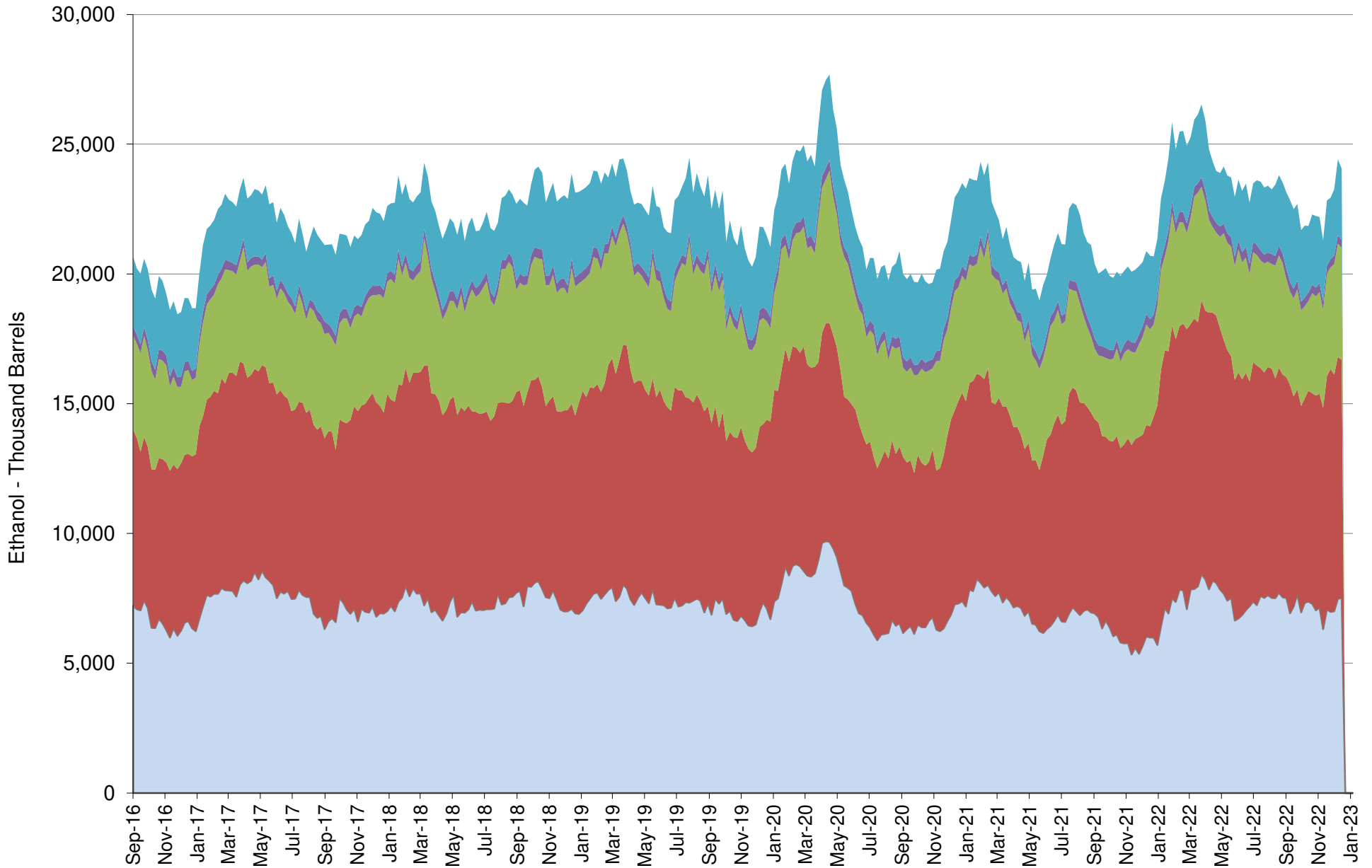
US Weekly Ethanol Stocks (corn crop year)



Source: EIA & FI

■ 2022-23
 ▲ 2021-22
 ✕ 2020-21
 ✱ 2019-20
 — 2018-19

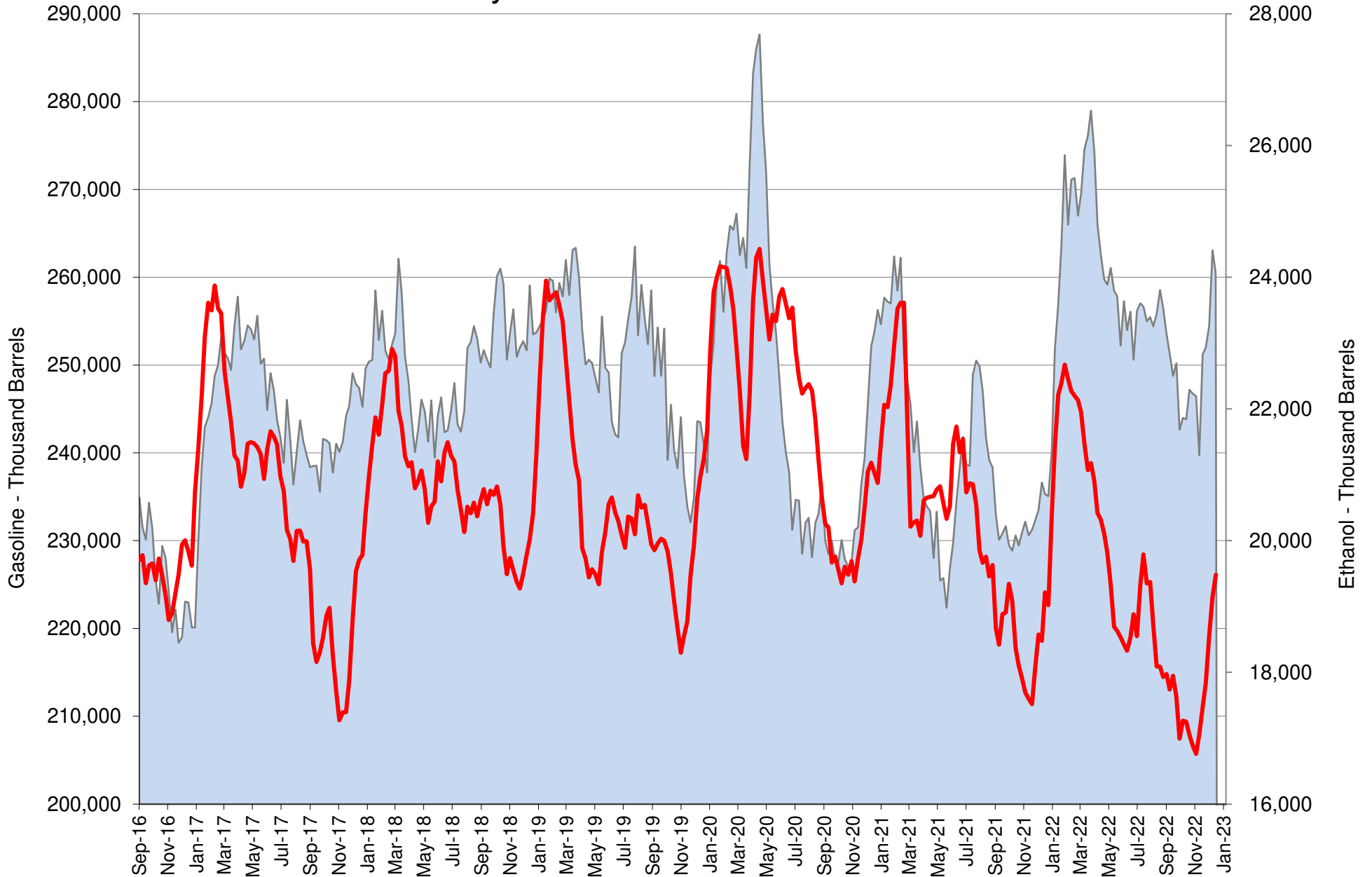
US Weekly Ethanol Stocks by PADD



Source: EIA & FI

■ PADD1 ■ PADD2 ■ PADD3 ■ PADD4 ■ PADD5

US Weekly Gasoline and Ethanol Stocks

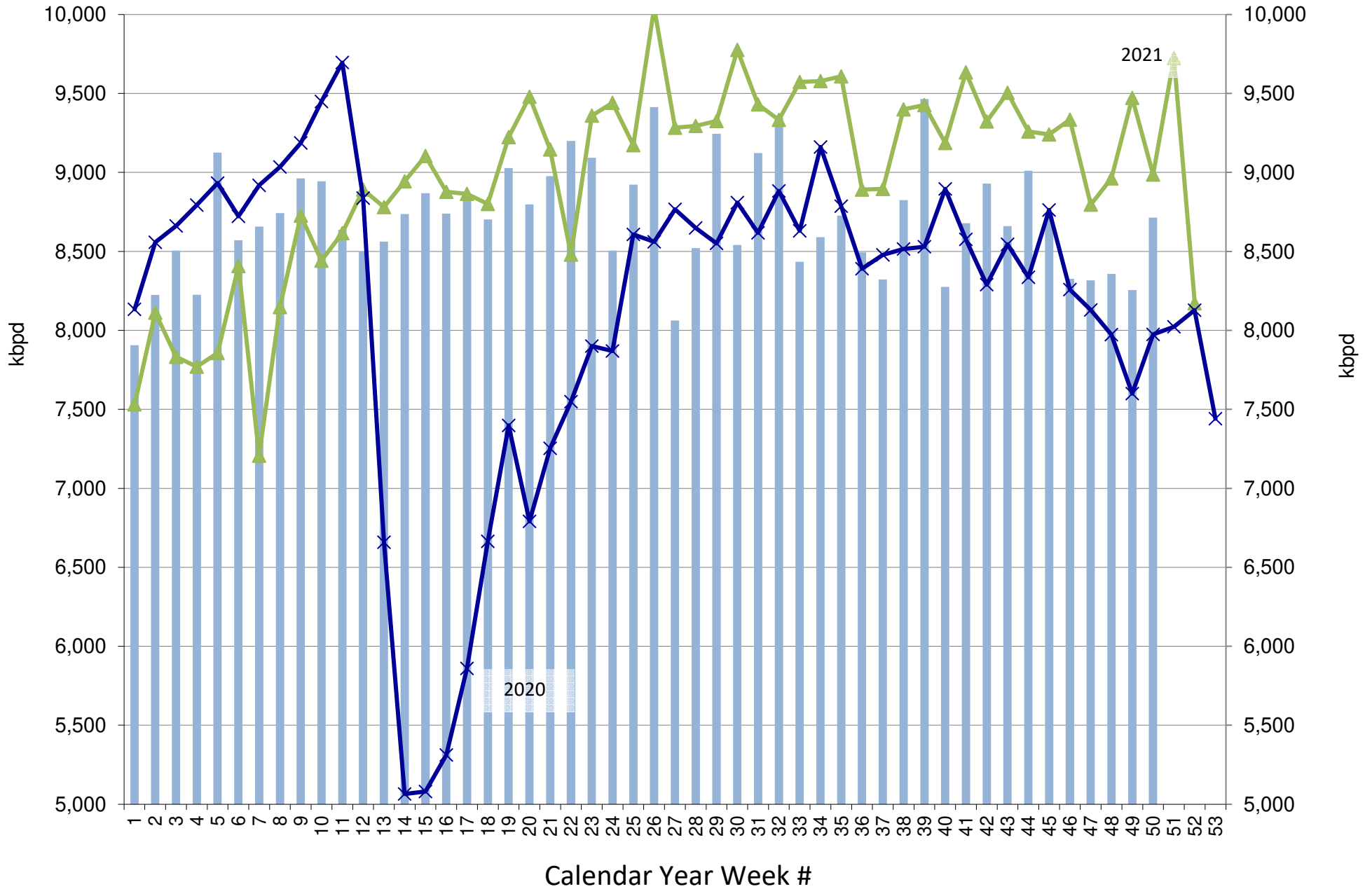


Source: EIA & FI

Stocks (1000bd)

US Gasoline Ending Stocks (thousand barrels)

US Weekly Gasoline Product Supplied



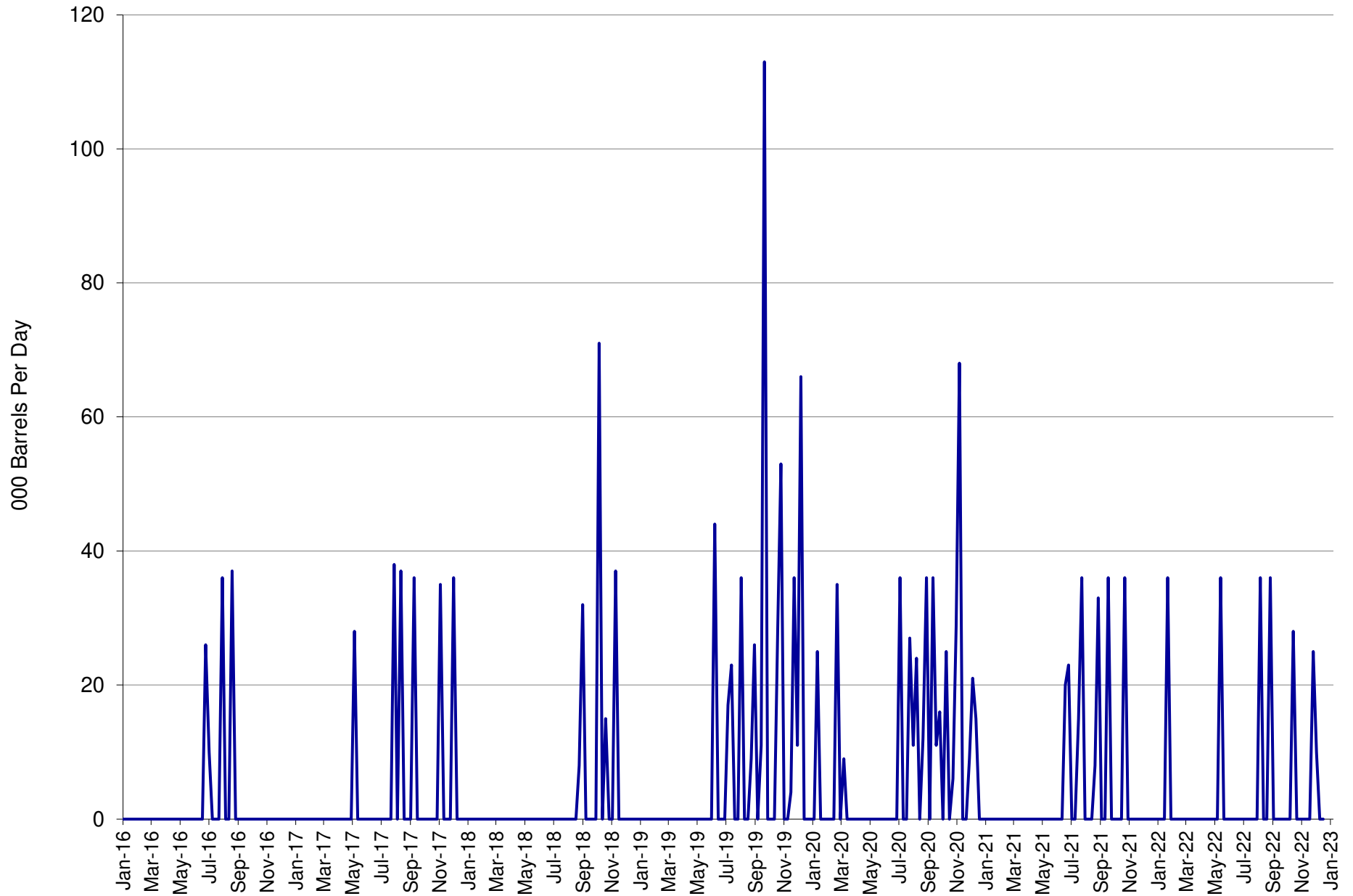
Source: EIA & FI

Gasoline Product Supplied (kbpd)

2021

2020

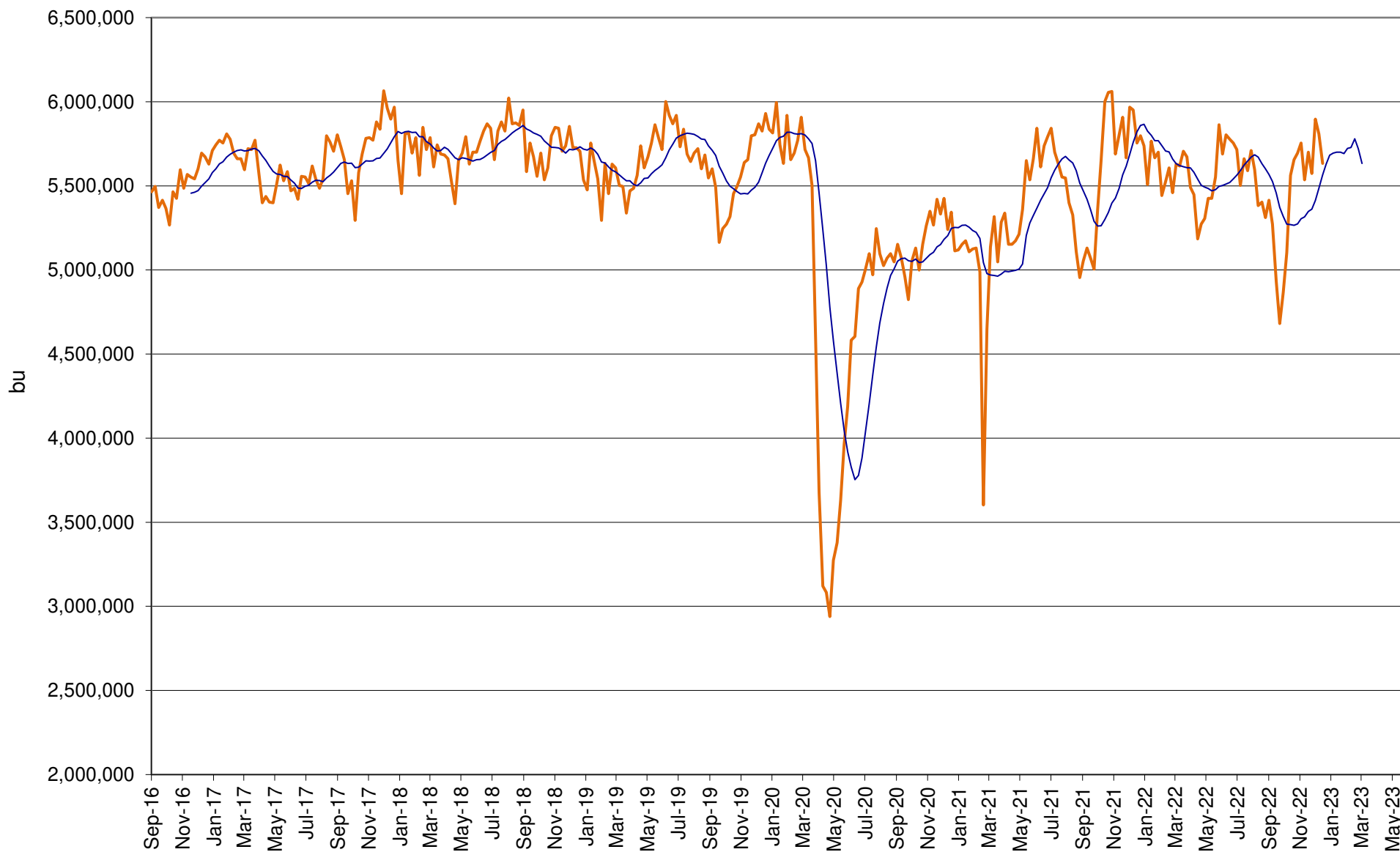
US Weekly Ethanol Imports



Source: EIA & FI

— Imports (BPD)

US Annualized Implied Corn Use

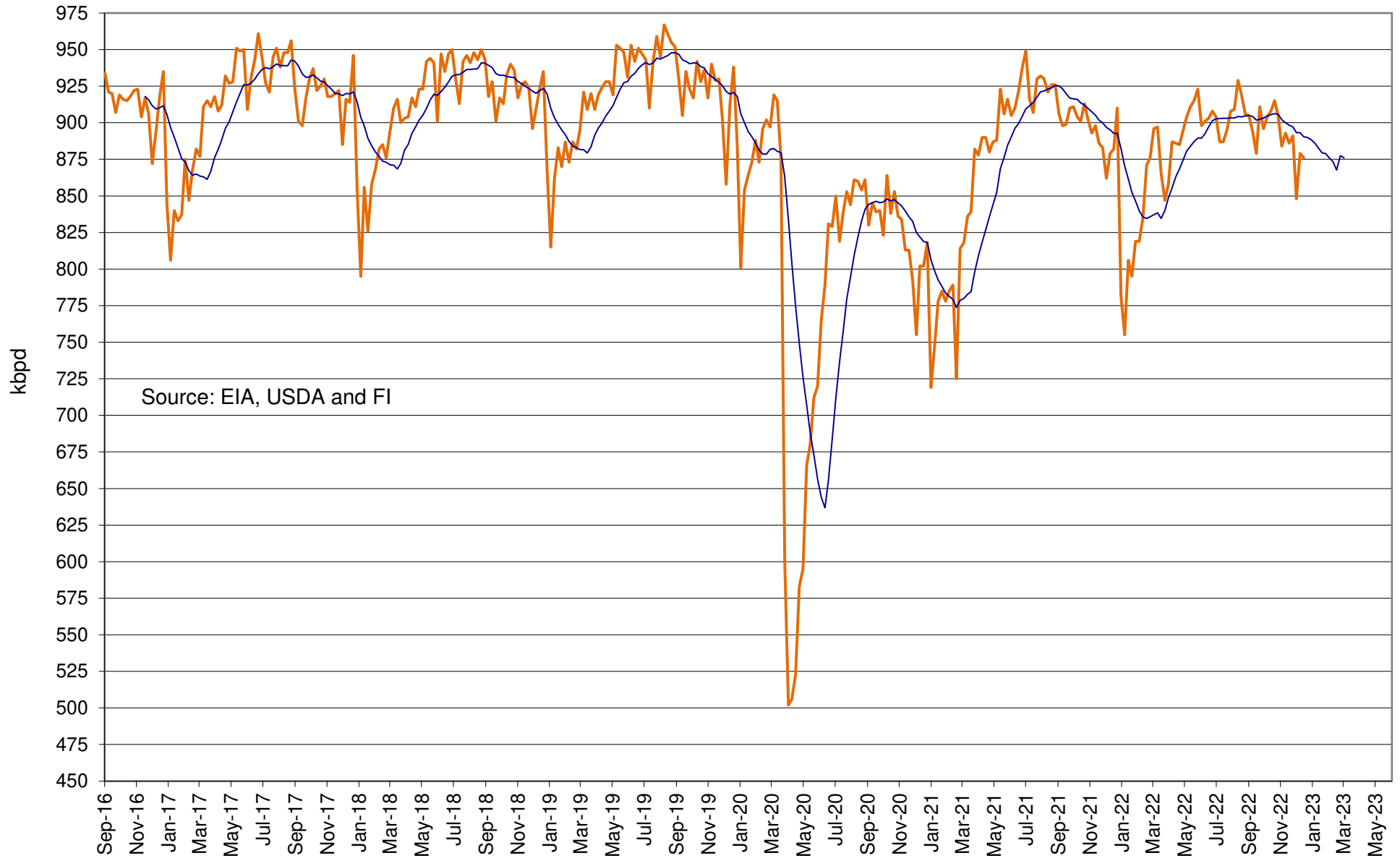


Source: EIA, USDA and FI

— US

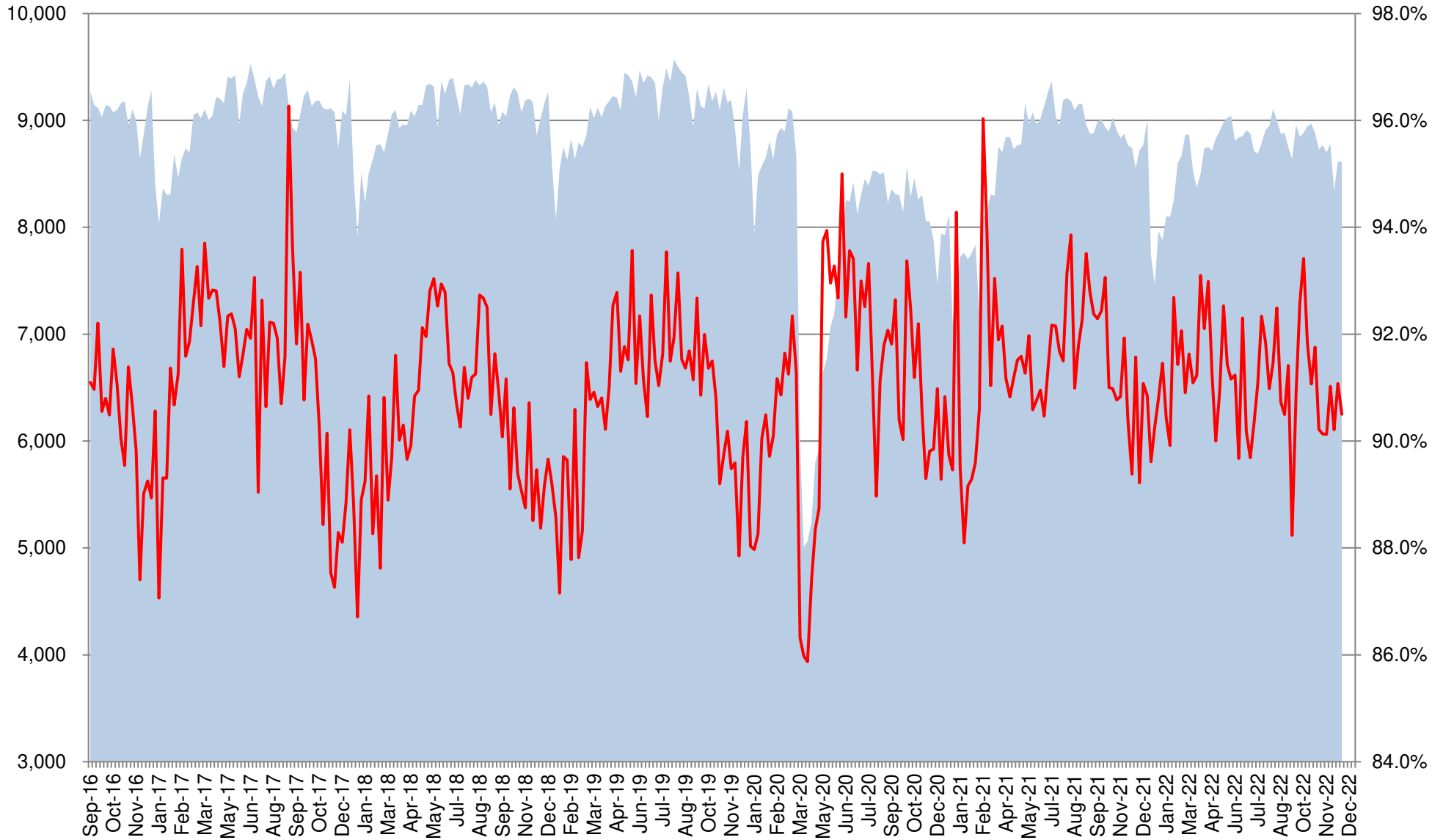
— 12 per. Mov. Avg. (US)

Refinery and Blender Net Input of Oxygenates Fuel Ethanol



— Refinery and Blender Net Input of Oxygenates Fuel Ethanol — 12 per. Mov. Avg.

US Net Blender Input of Fuel Ethanol and % Blend of Net Production of Finished Motor Gasoline

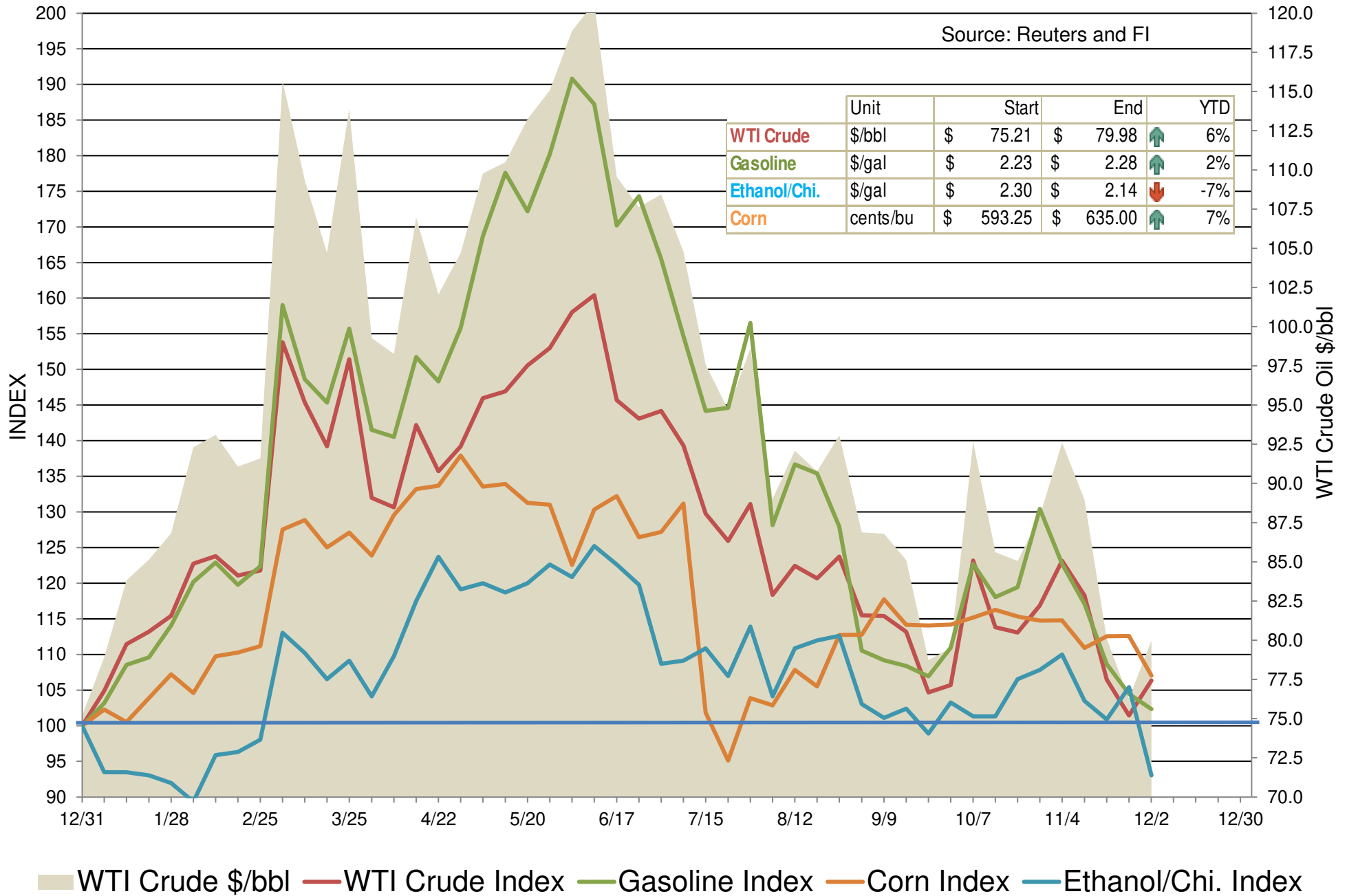


Source: EIA, USDA and FI

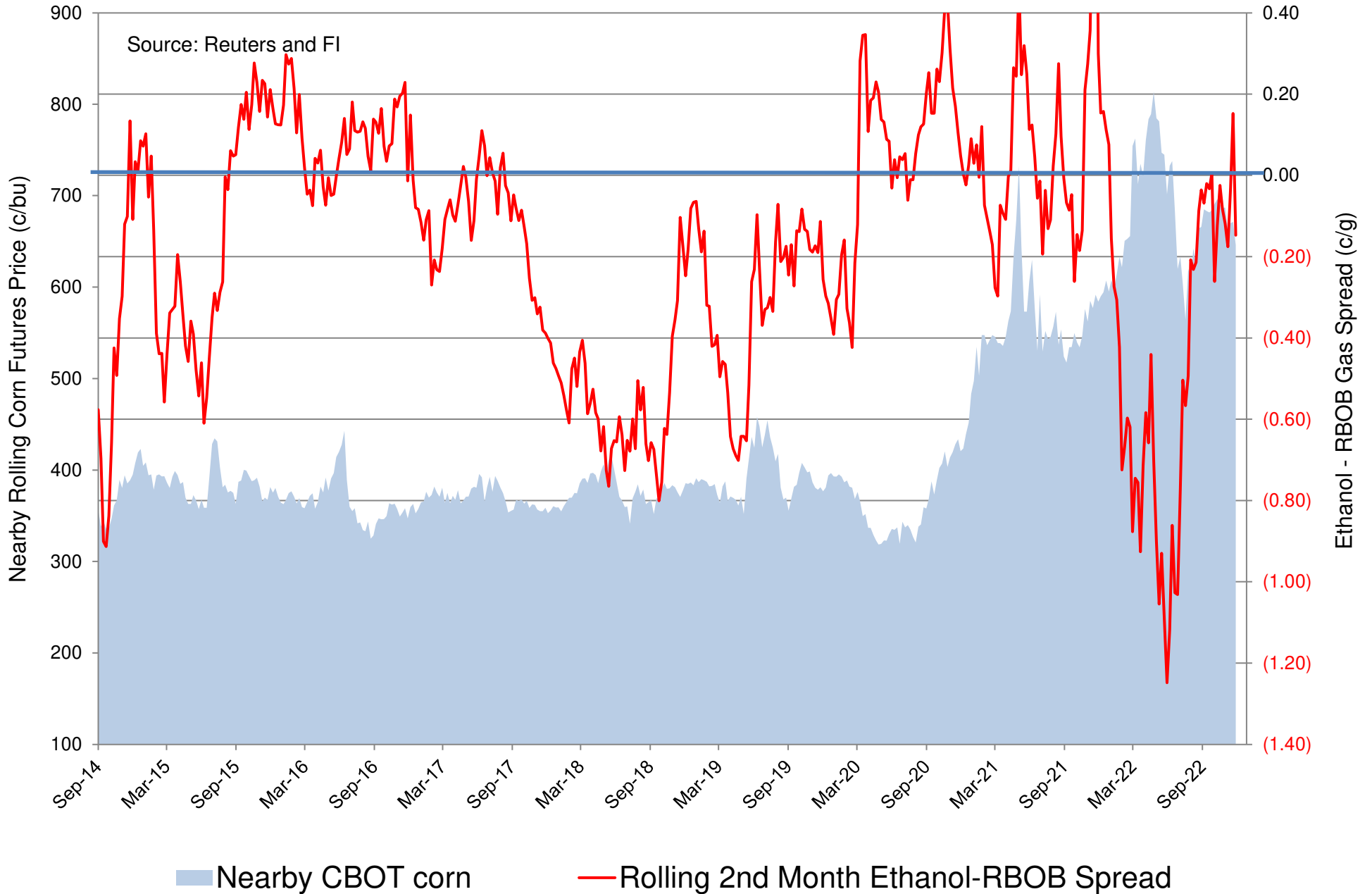
■ Total Blend Etoh

— Etoh Blend %

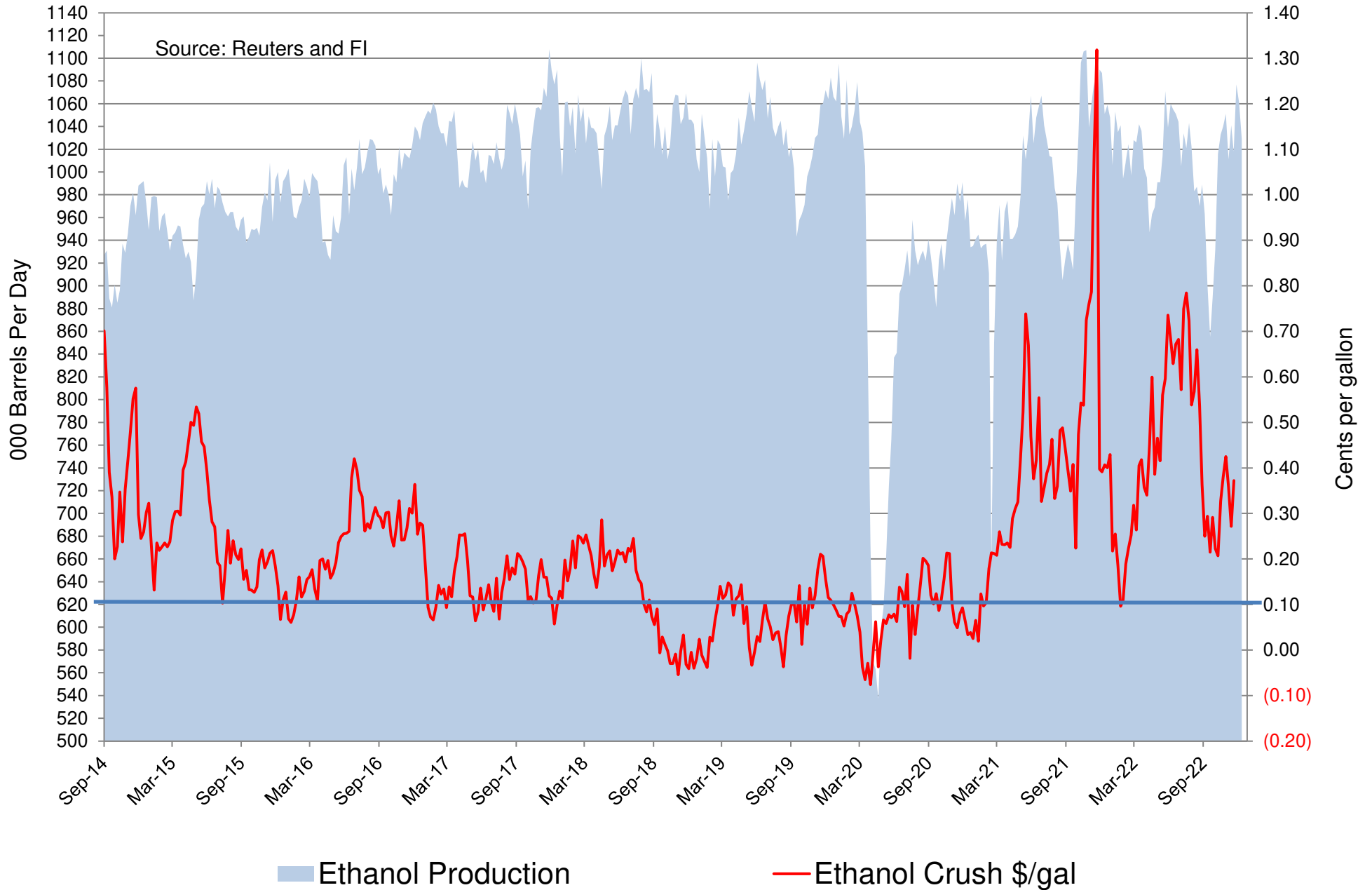
Indexed Commodity Prices Starting January 2022 versus WTI Crude Nearby Futures



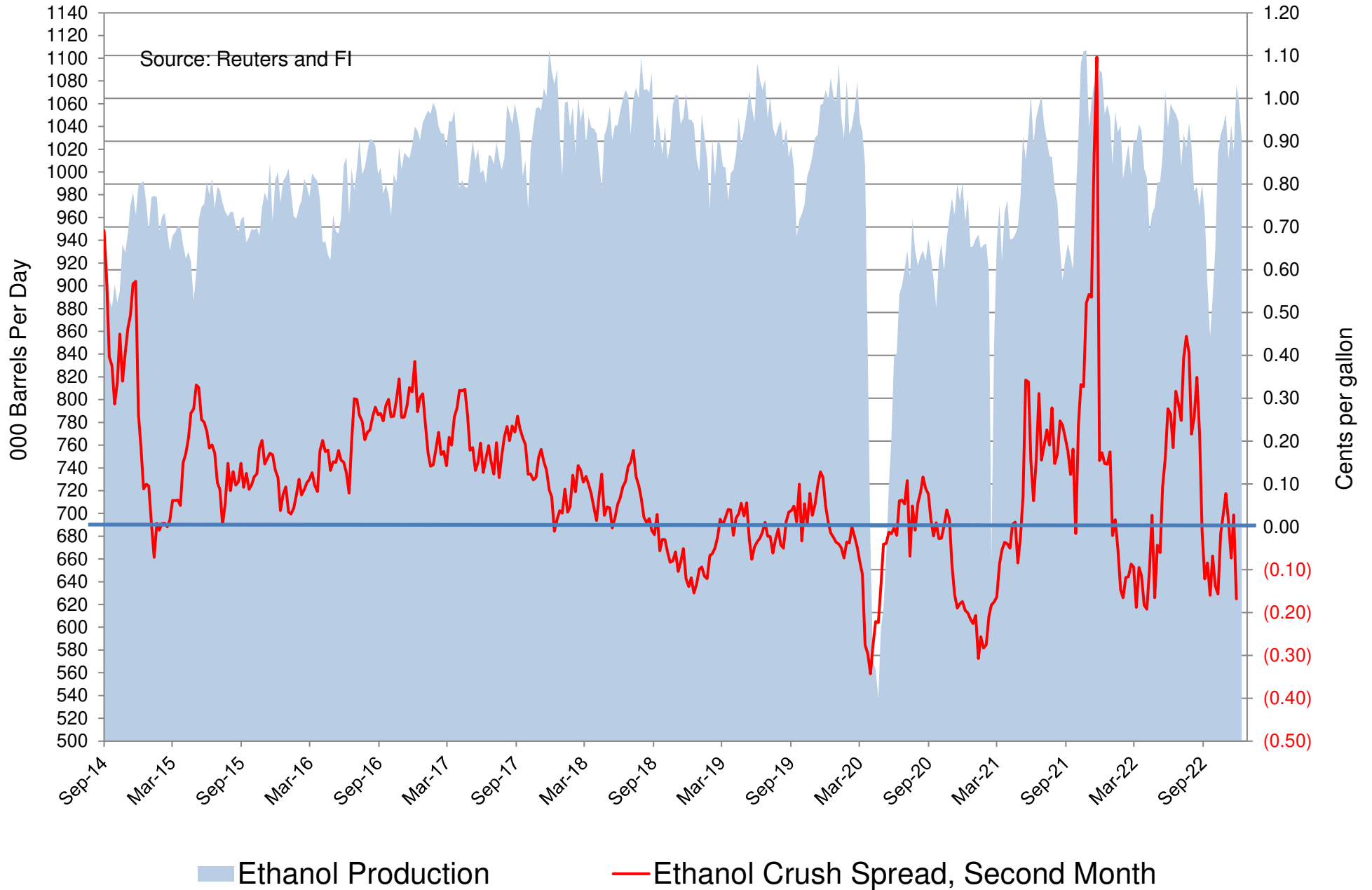
CBOT Second Month Corn Futures versus Second Month Ethanol - RBOB Futures Spread



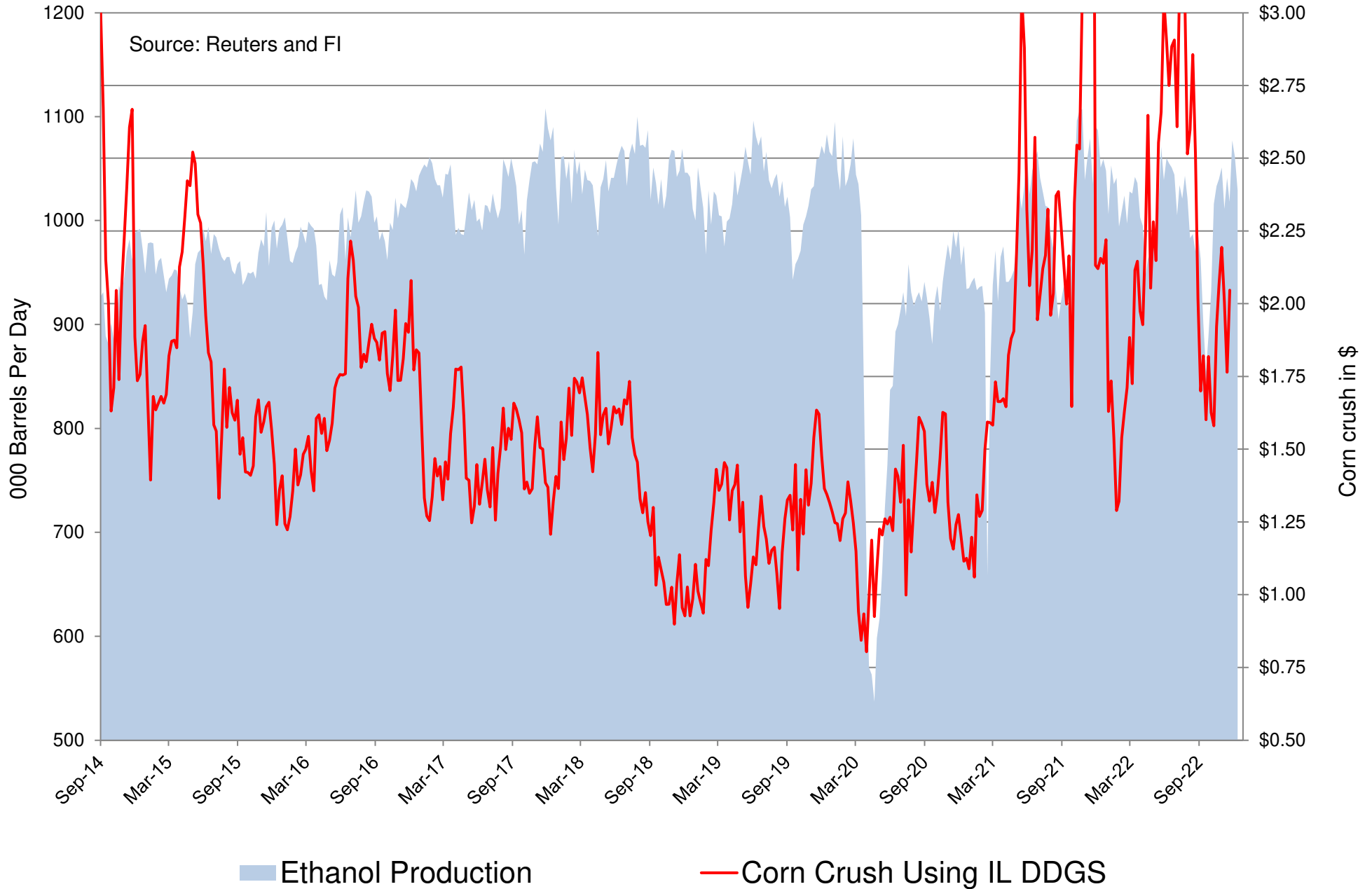
CBOT Second Month Corn Crush Spread versus Weekly Ethanol Production (uses Chicago ethanol and IL DDGS w/ implied costs)



Chicago Platts Second Month Corn Crush Spread versus Weekly Ethanol Production (Straight Calculation)



CBOT Second Month Corn Crush Spread with IL DDGS versus Weekly Ethanol Production (straight 3-commodity calculation)



Disclaimer

TO CLIENTS/PROSPECTS OF FUTURES INTERNATIONAL, SEE RISK DISCLOSURE BELOW:

THIS COMMUNICATION IS CONVEYED AS A SOLICITATION FOR ENTERING INTO A DERIVATIVES TRANSACTION.

Any trading recommendations and market or other information to Customer by Futures International (FI), although based upon information obtained from sources believed by FI to be reliable may not be accurate and may be changed without notice to customer. FI makes no guarantee as to the accuracy or completeness of any of the information or recommendations furnished to Customer. Customer understands that FI, its managers, employees and/or affiliates may have a position in commodity futures, options or other derivatives which may not be consistent with the recommendations furnished by FI to Customer.

The risk of trading futures and options and other derivatives involves a substantial risk of loss and is not suitable for all persons. In purchasing an option, the risk is limited to the premium paid, and all commissions and fees involved with the trade. When an option is shorted or written, the writer of the option has unlimited risk with respect to the option written. The use of options strategies such as a straddles and strangles involve multiple option positions and may substantially increase the amount of commissions and fees paid to execute the strategy. Option prices do not necessarily move in tandem with cash or futures prices. Each person must consider whether a particular trade, combination of trades or strategy is suitable for that person's financial means and objectives.

This material may include discussions of seasonal patterns, however, futures prices have already factored in the seasonal aspects of supply and demand, and seasonal patterns are no indication of future market trends. Finally, past performance is not indicative of future results.

This communication may contain links to third party websites which are not under the control of FI and FI is not responsible for their content. Products and services are offered only in jurisdictions where solicitation and sale are lawful, and in accordance with applicable laws and regulations in each such jurisdiction.