

CFTC COMMITMENT OF TRADERS REPORT

As of 1/10/2023

TRADITIONAL FUNDS net position changes

Wed to Tue, in 000 contracts

	Corn	Bean	Meal	Oil	Chi. Wheat	KC Wheat	Min Wheat
Futures Only	(33.7)	(8.3)	1.1	(8.6)	(7.4)	(9.5)	(0.4)
Futures & Options Combined	(37.2)	(8.2)	1.4	(10.5)	(10.4)	(8.8)	(0.6)

TRADITIONAL COMMERCIAL net position changes

	Corn	Bean	Meal	Oil	Chi. Wheat	KC Wheat	Min Wheat
Futures Only	34.5	7.2	(4.6)	9.3	5.9	8.1	1.4
Futures & Options Combined	41.8	7.4	(4.6)	11.3	8.3	7.4	1.5

MANAGED MONEY net position changes

	Corn	Bean	Meal	Oil	Chi. Wheat	KC Wheat	Min Wheat
Futures Only	(50.3)	(10.2)	1.2	(9.5)	(9.8)	(9.7)	0.1
Futures & Options Combined	(46.9)	(11.3)	0.8	(9.1)	(10.4)	(9.8)	0.1

SWAP DEALERS net position changes

	Corn	Bean	Meal	Oil	Chi. Wheat	KC Wheat	Min Wheat
Futures Only	(6.2)	0.5	(5.1)	1.5	(1.6)	1.1	0.2
Futures & Options Combined	(4.6)	0.1	(5.1)	1.5	(1.6)	1.2	0.2

PRODUCERS/END USERS net position changes

	Corn	Bean	Meal	Oil	Chi. Wheat	KC Wheat	Min Wheat
Futures Only	40.7	6.7	0.5	7.9	7.5	7.1	1.2
Futures & Options Combined	46.3	7.4	0.5	9.8	9.9	6.2	1.3

INDEX net position changes

	Corn	Bean	Meal	Oil	Chi. Wheat	KC Wheat	Min Wheat
Futures & Options Combined	(5.3)	(2.9)	(5.1)	(4.8)	(2.8)	(0.5)	NA

SUPPLEMENTAL NON-COMMERCIAL net position changes

	Corn	Bean	Meal	Oil	Chi. Wheat	KC Wheat	Min Wheat
Futures & Options Combined	(36.4)	(3.8)	1.1	(7.8)	(10.7)	(7.8)	NA

OPEN INTEREST net position changes

Wed to Tue, in 000 contracts

	Corn	Bean	Meal	Oil	Chi. Wheat	KC Wheat	Min Wheat
Futures Only	(6.6)	17.1	4.2	(1.8)	3.0	11.3	2.3
Futures & Options Combined	12.0	23.8	8.9	1.7	6.7	12.0	2.4

Source: CFTC and FI

Wed to Tue, in 000 contracts

**COMMITMENT OF TRADERS
FUTURES ONLY NET POSITIONS
AS OF 01/10/2023
(IN THOUSAND CONTRACTS)**

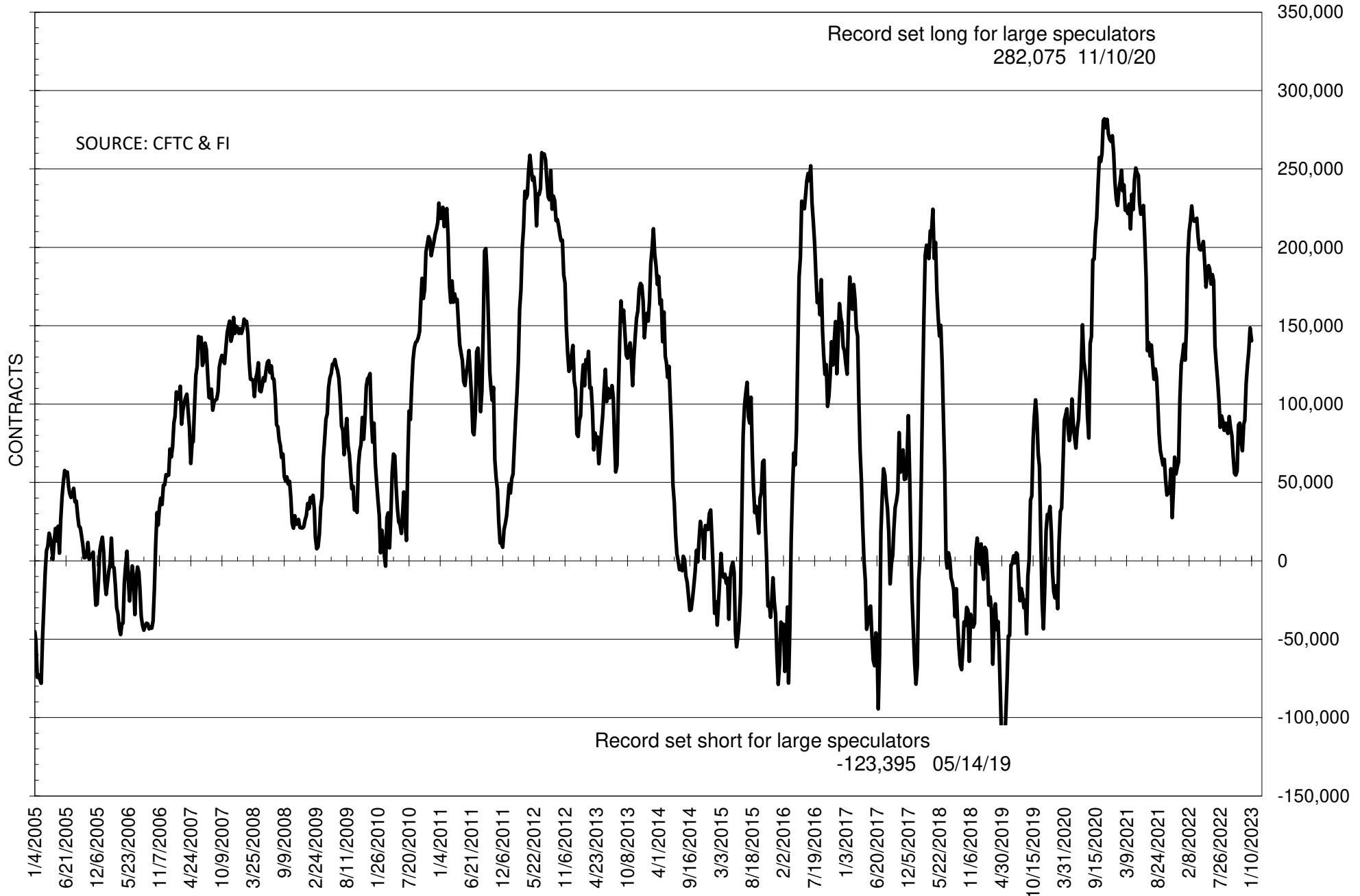
	COMMERCIAL				(FUND) NON COMMERCIAL				(SPEC) NON-REPORTABLE			
	10-Jan	3-Jan	27-Dec	20-Dec	10-Jan	3-Jan	27-Dec	20-Dec	10-Jan	3-Jan	27-Dec	20-Dec
	WHEAT											
Chicago	43.5	37.6	40.7	41.1	-39.7	-32.3	-36.3	-37.0	-3.8	-5.3	-4.4	-4.1
Kansas City	12.8	4.7	4.2	2.0	-12.2	-2.6	-2.5	-1.3	-0.7	-2.1	-1.7	-0.7
Minneapolis	2.1	0.8	0.8	3.6	-0.6	-0.2	-0.3	-1.7	-1.5	-0.6	-0.5	-1.9
All Wheat	58.5	43.1	45.7	46.7	-52.5	-35.1	-39.2	-40.0	-6.0	-8.0	-6.5	-6.7
CORN	-182.6	-217.1	-189.9	-158.6	233.8	267.5	235.1	200.0	-51.2	-50.4	-45.3	-41.4
OATS	-0.1	-0.2	0.0	0.1	-0.9	-0.7	-1.0	-1.2	1.0	0.8	1.0	1.1
SOYBEANS	-104.2	-111.3	-100.1	-91.7	140.3	148.6	133.5	124.7	-36.2	-37.3	-33.4	-33.0
SOY OIL	-71.4	-80.7	-82.3	-76.1	62.1	70.7	69.3	64.8	9.3	10.0	13.0	11.3
SOY MEAL	-180.6	-176.0	-165.5	-162.2	157.7	156.6	146.9	140.1	22.9	19.4	18.6	22.1

Oats positions thin to be reported

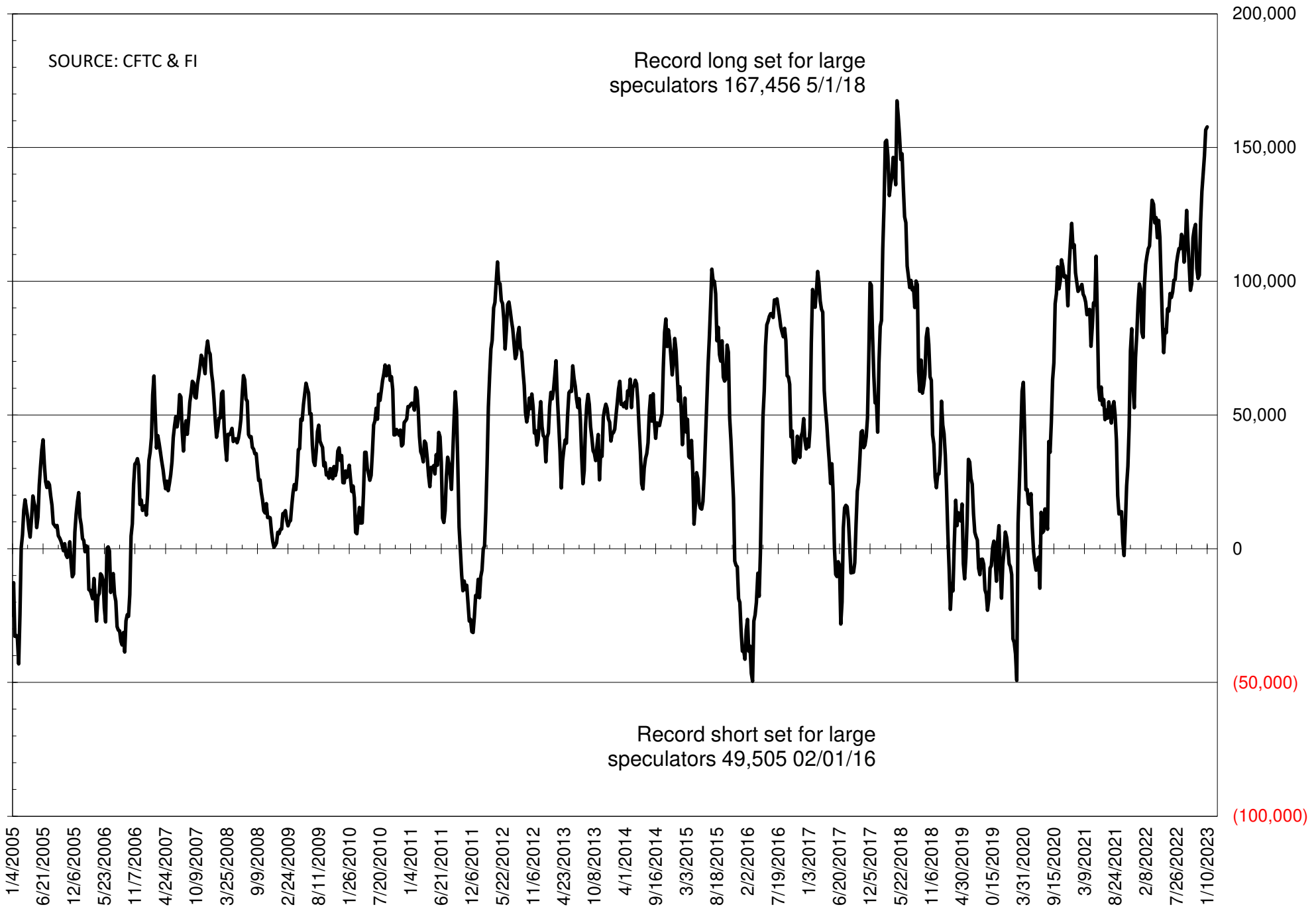
	TOTAL OPEN INTEREST				NEARBY FUTURES PRICE					10-Jan-23 LAST REPORTED % HELD BY TRADERS			
	10-Jan	3-Jan	27-Dec	20-Dec	H Latest	H 10-Jan	H 3-Jan	F/H 27-Dec	F/H 20-Dec	LARGE FUND		SMALL	
										LONG	SHORT	LONG	SHORT
WHEAT													
Chicago	334538	331577	331562	332182	743.75	731.00	775.50	750.50	750.50	0%	38%	0%	11%
Kansas City	163353	152061	149652	151177	843.75	811.75	869.25	847.00	847.00	0%	27%	0%	13%
Minneapolis	55859	53547	54118	50754	911.50	894.50	919.25	916.00	916.00	0%	13%	0%	19%
CORN	1214817	1221434	1186971	1187781	675.00	655.00	670.50	652.00	652.00	0%	8%	0%	14%
OATS	3810	3650	3932	4414	364.00	341.00	363.50	336.50	336.50	0%	44%	0%	29%
SOYBEANS	620659	603609	595601	627125	1527.75	1485.00	1492.25	1478.50	1478.50	30%	8%	7%	13%
SOY OIL	373118	374903	372407	393740	63.06	62.57	63.20	66.05	66.05	0%	8%	0%	6%
SOY MEAL	408767	404562	401630	407746	476.30	468.90	465.10	452.40	452.40	0%	3%	0%	6%

SOURCE: CFTC & FI

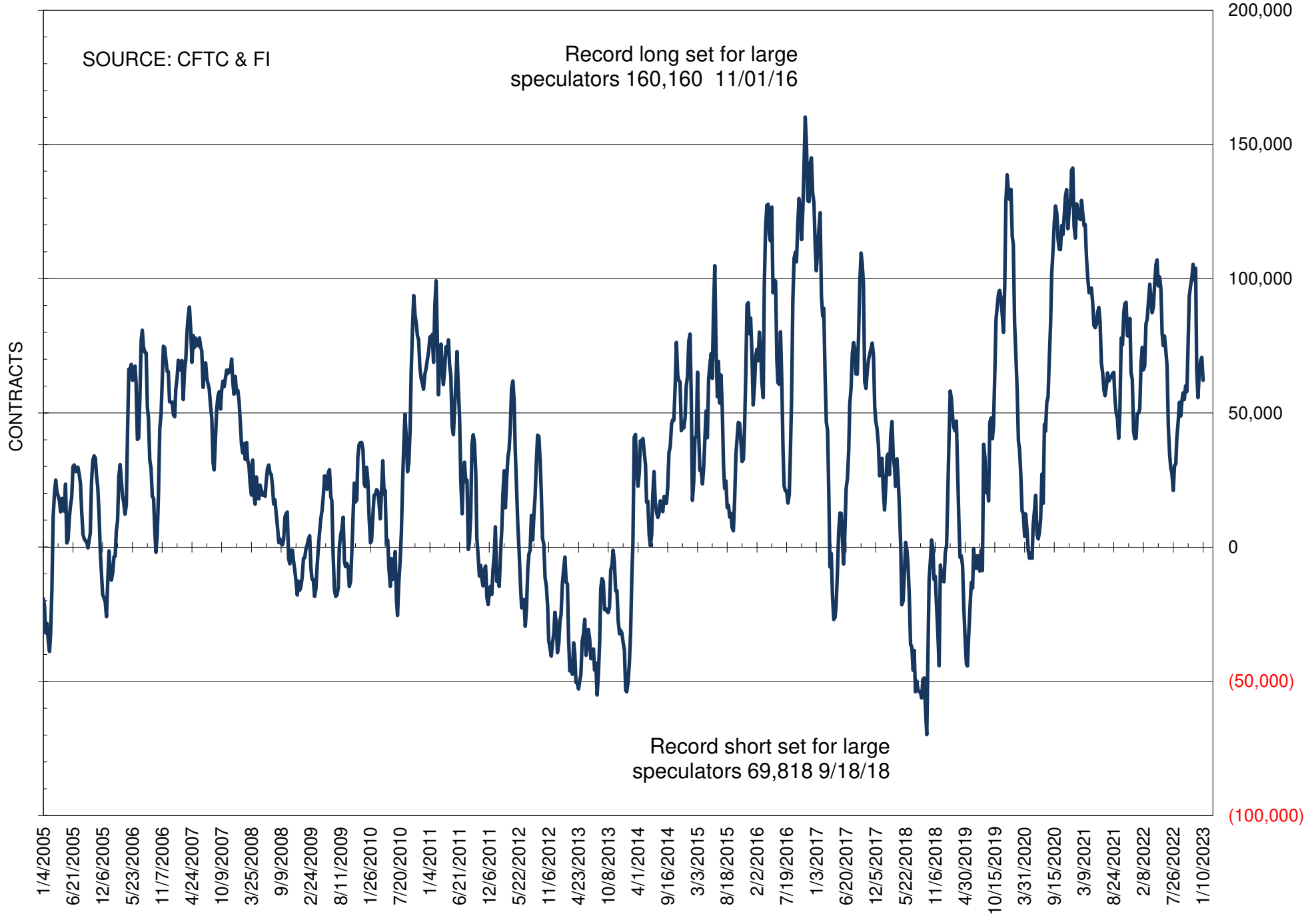
NET POSITION OF FUTURES ONLY LARGE SPECS IN SOYBEANS



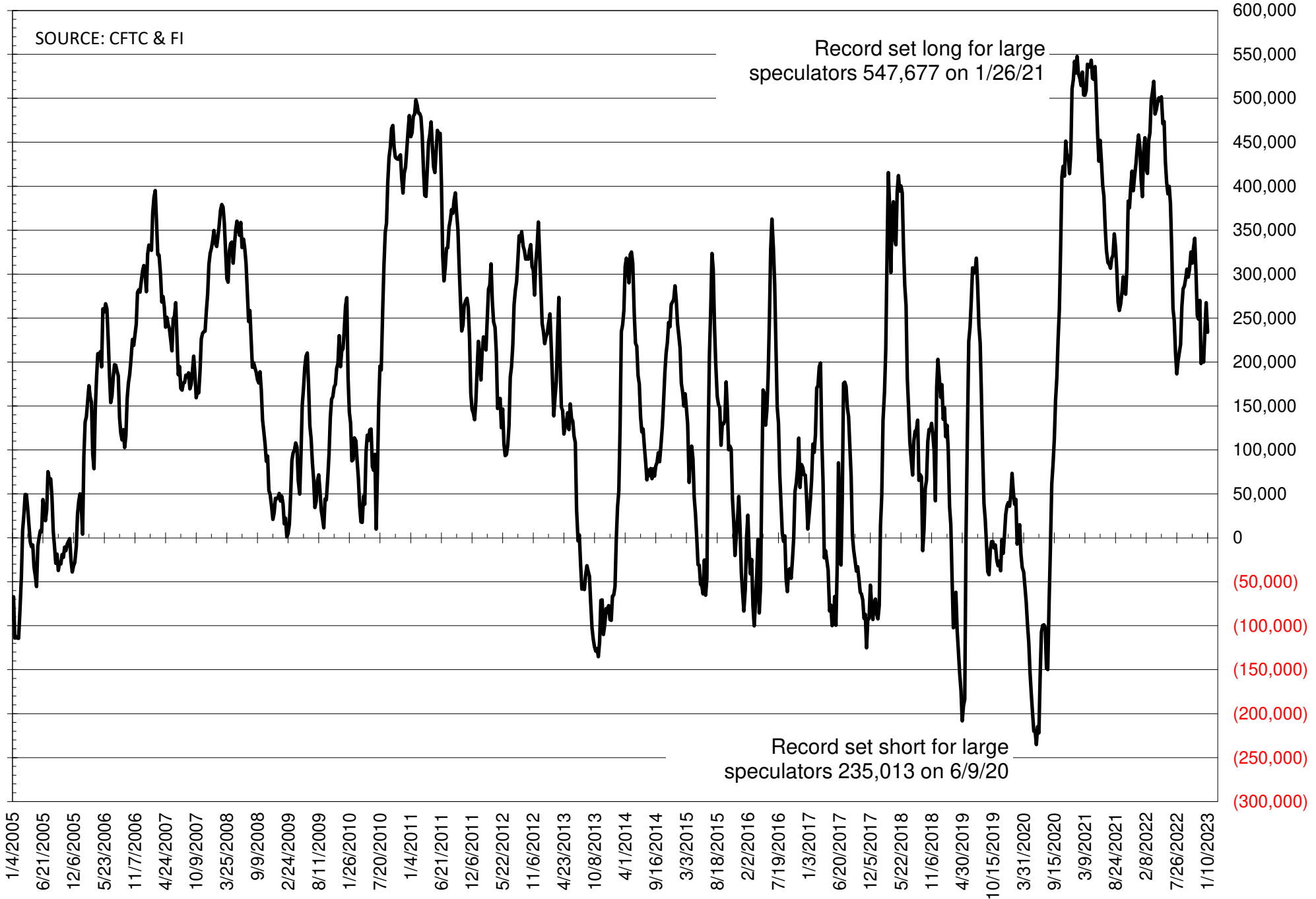
NET POSITION OF FUTURES ONLY LARGE SPECS IN SOYMEAL



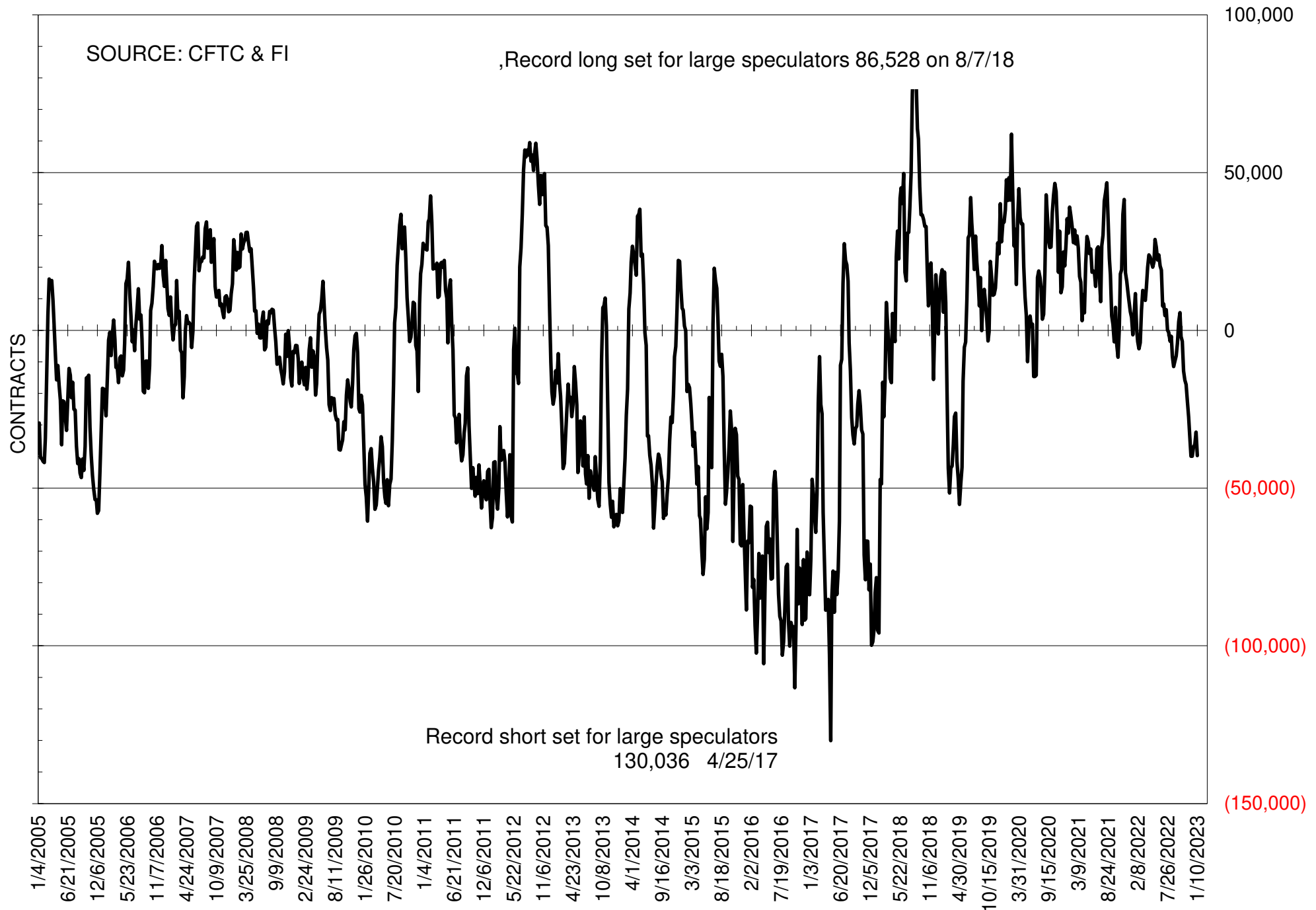
NET POSITION OF FUTURES ONLY LARGE SPECS IN SOYOIL



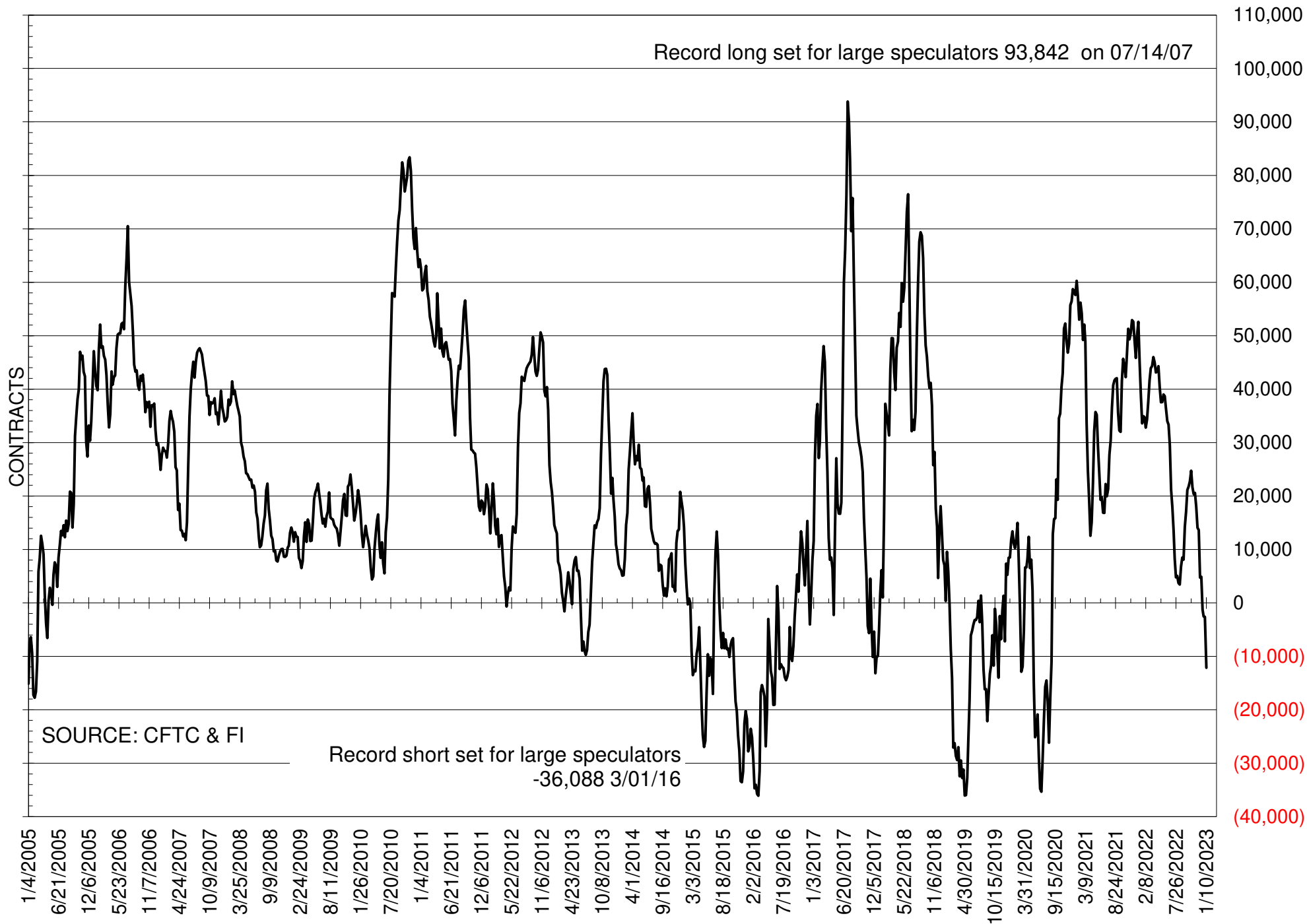
NET POSITION OF LARGE SPECULATORS IN CORN



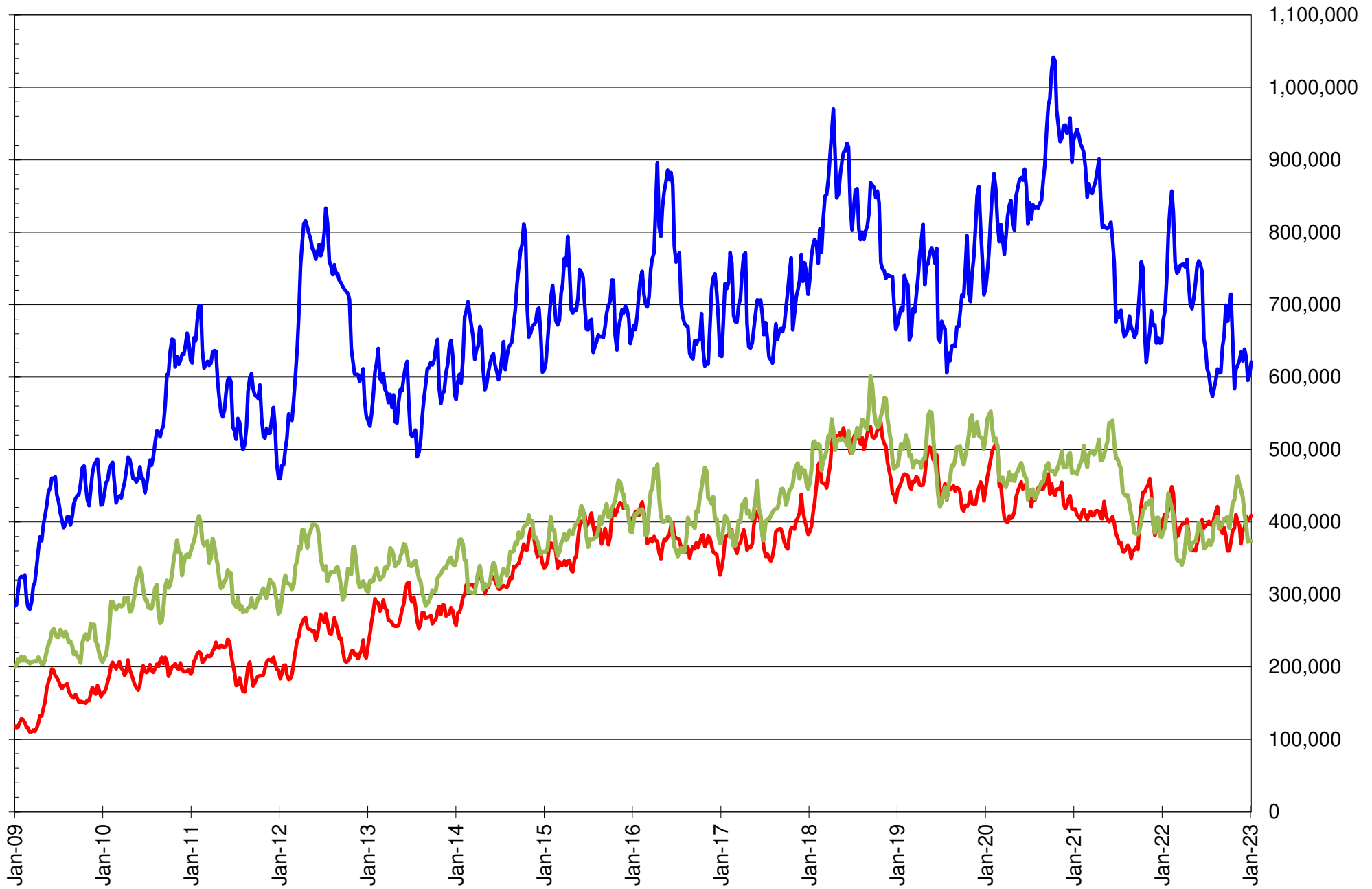
NET POSITION OF FUTURES ONLY LARGE SPECS IN CHICAGO WHEAT



NET POSITION OF LARGE SPECULATORS IN KANSAS CITY WHEAT



TOTAL OPEN INTEREST IN SOYBEANS, MEAL AND OIL, FUTURES ONLY



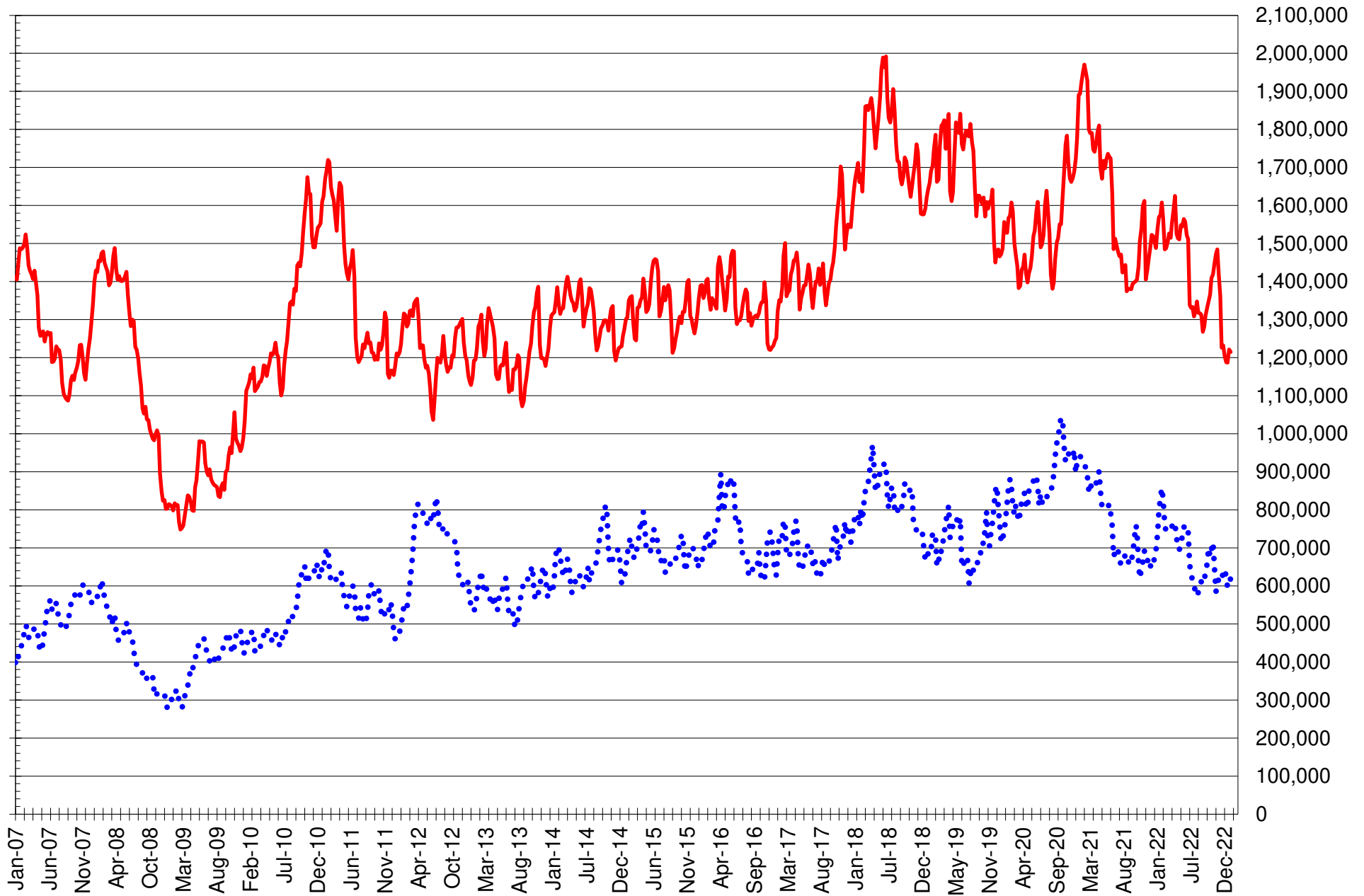
SOURCE: CFTC & FI

— SOYBEANS

— SOYBEAN MEAL

— SOYBEAN OIL

TOTAL OPEN INTEREST IN CORN AND SOYBEANS, FUTURES ONLY



SOURCE: CFTC & FI

— CORN

•••• SOYBEANS

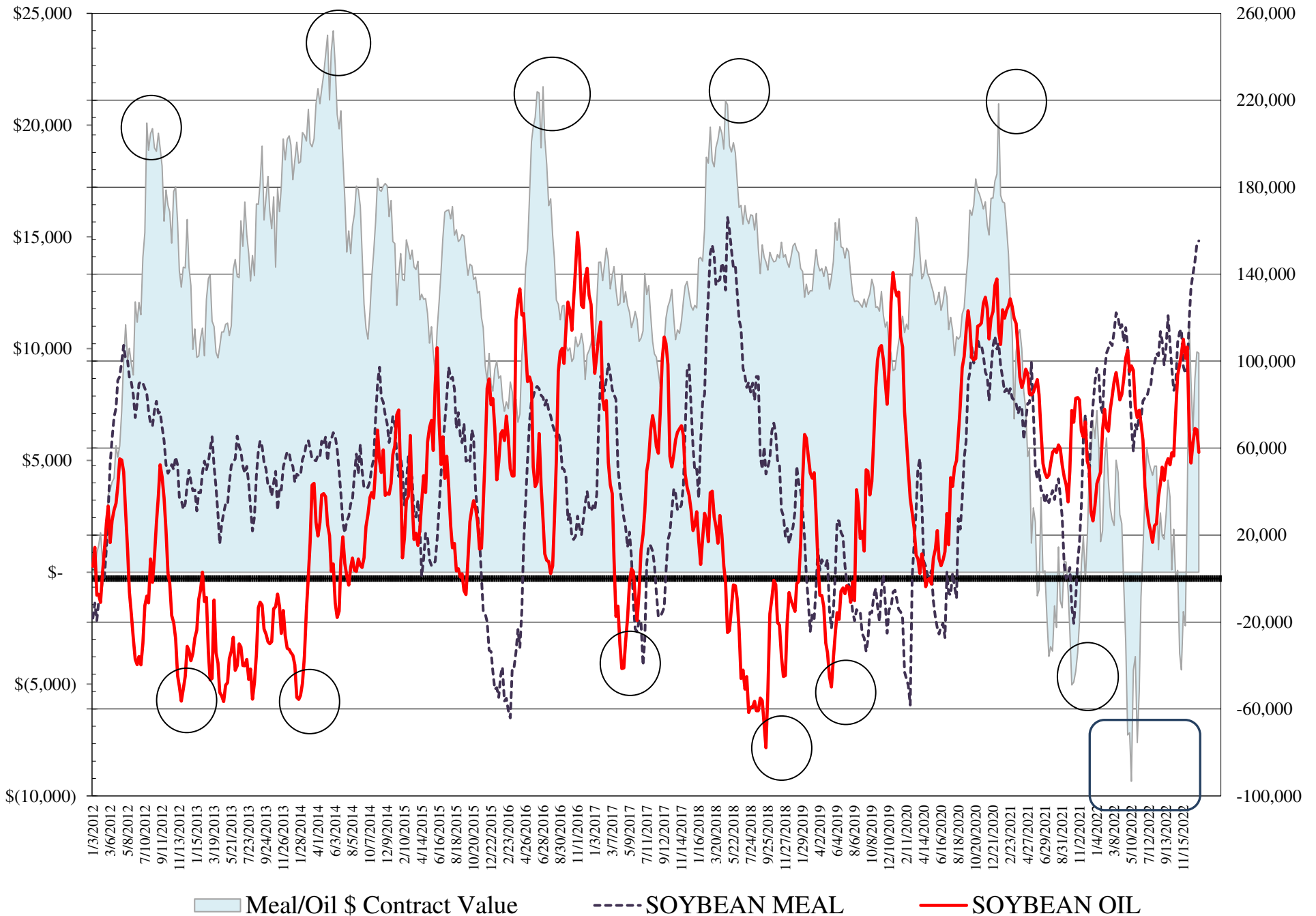
COMMITMENT OF TRADERS
FUTURES & OPTIONS NET POSITIONS
AS OF 01/10/2023
(IN THOUSAND CONTRACTS)

	COMMERCIAL				(FUND) NON COMMERCIAL				(SPEC) NON-REPORTABLE			
	10-Jan	3-Jan	27-Dec	20-Dec	10-Jan	3-Jan	27-Dec	20-Dec	10-Jan	3-Jan	27-Dec	20-Dec
WHEAT												
Chicago	45.9	37.5	40.2	43.6	-43.8	-33.5	-37.3	-40.8	-2.0	-4.1	-2.9	-2.8
Kansas City	12.8	5.4	4.9	3.8	-12.3	-3.4	-3.5	-3.4	-0.5	-1.9	-1.4	-0.4
Minneapolis	2.4	0.9	0.9	3.6	-1.0	-0.4	-0.4	-1.7	-1.4	-0.6	-0.4	-1.8
All Wheat	61.0	43.8	46.1	51.0	-57.1	-37.3	-41.3	-45.9	-4.0	-6.6	-4.8	-5.1
CORN	-153.9	-195.7	-167.3	-121.7	208.4	245.6	209.3	160.1	-54.5	-50.0	-42.0	-38.4
OATS	-0.1	-0.2	0.0	0.1	-0.9	-0.7	-1.0	-1.2	1.0	0.8	1.0	1.1
SOYBEANS	-98.6	-106.1	-96.7	-90.0	138.5	146.7	132.8	125.9	-39.9	-40.7	-36.1	-35.9
SOY OIL	-67.9	-79.1	-82.5	-73.9	58.0	68.5	69.0	62.2	9.8	10.6	13.5	11.6
SOY MEAL	-178.1	-173.4	-164.2	-162.0	155.3	153.9	145.7	140.0	22.8	19.6	18.5	22.0

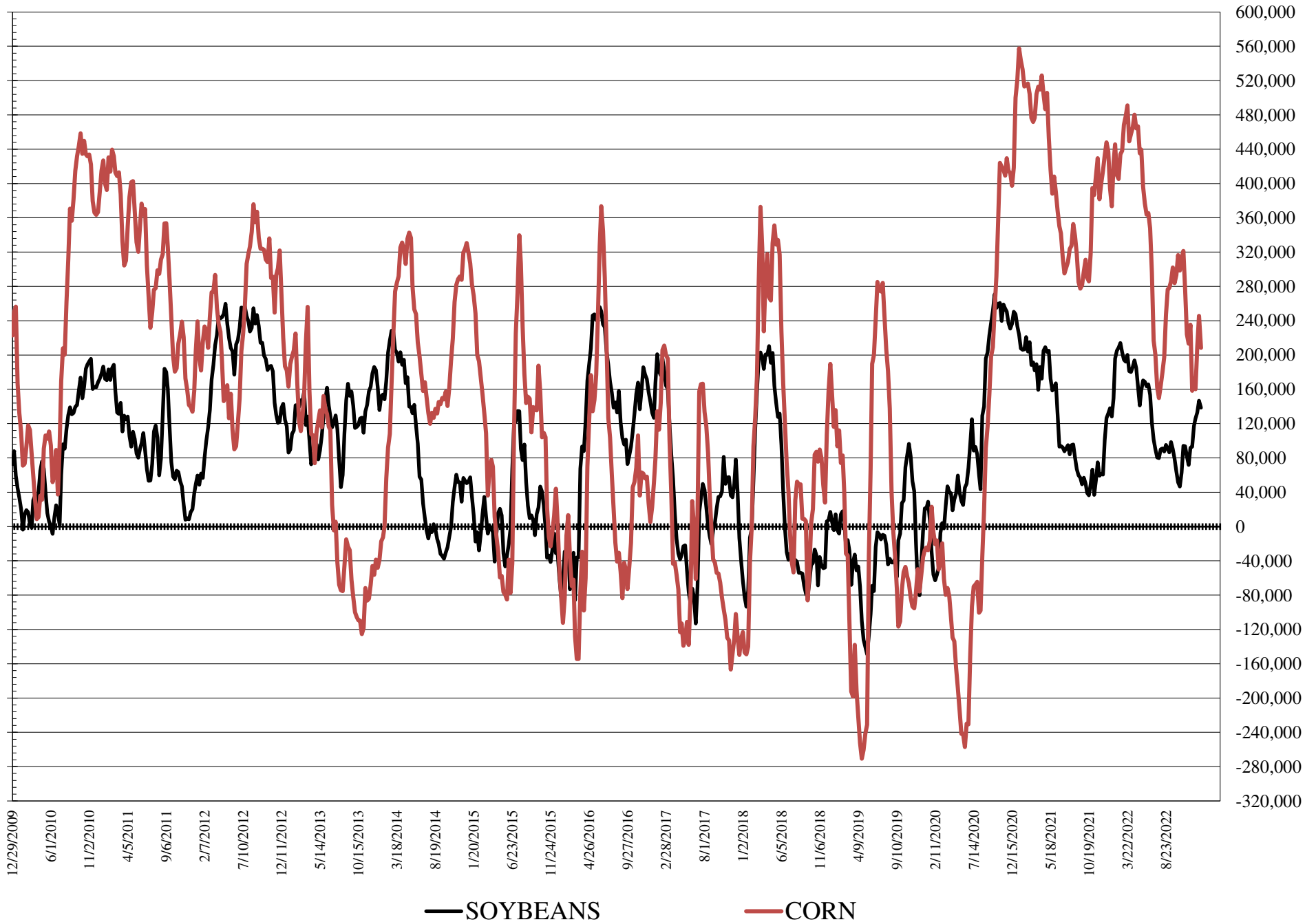
	TOTAL OPEN INTEREST				COMMERCIALS		% HELD BY TRADERS LARGE (FUNDS)		SMALL (NON-REP)		
	10-Jan	3-Jan	27-Dec	20-Dec	LONG	SHORT	LONG	SHORT	LONG	SHORT	
WHEAT											
Chicago	394,847	388,172	387,675	402,381		39%	28%	21%	32%	9%	10%
Kansas City	176,931	164,954	162,296	165,627		46%	39%	17%	24%	12%	12%
Minneapolis	57,437	55,071	55,600	52,174		66%	62%	11%	13%	17%	19%
CORN	1,481,932	1,469,933	1,423,239	1,443,655		43%	54%	20%	6%	11%	14%
OATS	3,849	3,683	3,968	4,439							
SOYBEANS	727,769	703,996	682,246	733,115		46%	59%	26%	6%	7%	12%
SOY OIL	408,665	406,954	403,106	445,456		48%	65%	21%	7%	9%	6%
SOY MEAL	454,472	445,612	435,113	453,264		32%	71%	37%	3%	12%	7%

SOURCE: CFTC & FI

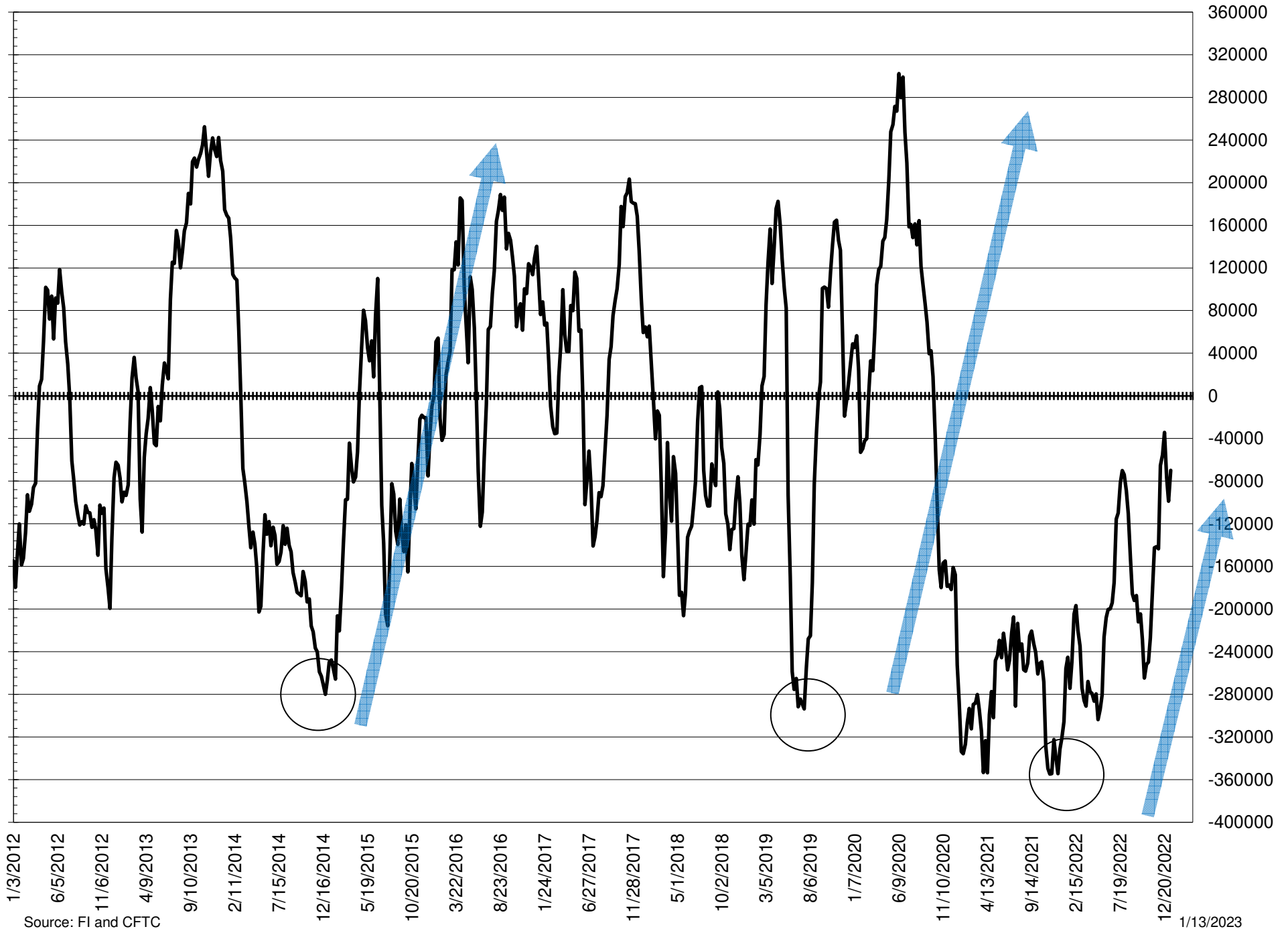
NET POSITION FUTURES AND OPTIONS OF LARGE SPECULATORS IN SOYBEAN MEAL AND SOYBEAN OIL



NET POSITION FUTURES AND OPTIONS OF LARGE SPECULATORS IN SOYBEANS AND CORN



NET POSITION FUTURES AND OPTIONS SPREAD OF LARGE SPECULATORS IN SOYBEANS MINUS CORN



Source: FI and CFTC

**DISAGGREGATED COMMITMENT OF TRADERS
FUTURES ONLY NET POSITIONS
AS OF 01/10/2023
(IN THOUSAND CONTRACTS)**

	PRODUCER / MERCHANT / PROCESSOR / USER				(INDEX/ETF) SWAP DEALERS				(CTA/CPO/OTHER UNREGISTERED) MANAGED MONEY			
	10-Jan	3-Jan	27-Dec	20-Dec	10-Jan	3-Jan	27-Dec	20-Dec	10-Jan	3-Jan	27-Dec	20-Dec
	WHEAT											
Chicago	(19.5)	(27.0)	(23.1)	(22.3)	63.0	64.6	63.8	63.4	(62.6)	(52.8)	(56.2)	(59.8)
Kansas City	(23.1)	(30.2)	(29.9)	(31.6)	36.0	34.9	34.1	33.6	(8.6)	1.2	1.3	0.8
Minneapolis	0.5	(0.6)	(0.5)	2.5	1.6	1.4	1.3	1.1	(2.7)	(2.8)	(3.3)	(4.4)
All Wheat	(42.1)	(57.8)	(53.6)	(51.4)	100.6	100.9	99.2	98.1	(73.9)	(54.5)	(58.2)	(63.4)
CORN	(397.8)	(438.5)	(408.7)	(376.4)	215.1	221.4	218.8	217.8	149.7	200.0	163.7	113.6
OATS	(0.1)	(0.2)	0.0	0.2	(0.1)	-	-	(0.1)	(1.7)	(1.5)	(1.7)	(1.9)
SOYBEANS	(172.8)	(179.5)	(166.8)	(165.2)	68.6	68.1	66.8	73.5	132.6	142.9	129.2	126.7
SOY OIL	(159.3)	(167.2)	(167.7)	(162.5)	87.9	86.5	85.4	86.4	51.0	60.4	62.1	55.1
SOY MEAL	(253.2)	(253.7)	(244.4)	(241.3)	72.6	77.7	78.9	79.1	143.6	142.4	130.3	122.4

Managed % of OI				
Chicago W	-19%	-16%	-17%	-18%
Corn	12%	16%	14%	10%

	TOTAL OPEN INTEREST				OTHER REPORTABLE				NON REPORTABLE			
	10-Jan	3-Jan	27-Dec	20-Dec	10-Jan	3-Jan	27-Dec	20-Dec	10-Jan	3-Jan	27-Dec	20-Dec
	WHEAT											
Chicago	334,538	331,577	331,562	332,182	22.9	20.5	20.0	22.8	(3.8)	(5.3)	(4.4)	(4.1)
Kansas City	163,353	152,061	149,652	151,177	(3.6)	(3.8)	(3.9)	(2.1)	(0.7)	(2.1)	(1.7)	(0.7)
Minneapolis	55,859	53,547	54,118	50,754	2.1	2.6	3.0	2.7	(1.5)	(0.6)	(0.5)	(1.9)
All Wheat	553,750	537,185	535,332	534,113	21.4	19.4	19.1	23.4	(6.0)	(8.0)	(6.5)	(6.7)
CORN	1,214,817	1,221,434	1,186,971	1,187,781	84.1	67.6	71.5	86.4	(51.2)	(50.4)	(45.3)	(41.4)
OATS	3,810	3,650	3,932	4,414	0.8	0.8	0.7	0.7	1.0	0.8	1.0	1.1
SOYBEANS	620,659	603,609	595,601	627,125	7.7	5.8	4.3	(2.0)	(36.2)	(37.3)	(33.4)	(33.0)
SOY OIL	373,118	374,903	372,407	393,740	11.1	10.3	7.2	9.7	9.3	10.0	13.0	11.3
SOY MEAL	408,767	404,562	401,630	407,746	14.1	14.1	16.6	17.7	22.9	19.4	18.6	22.1

SOURCE: CFTC & FI

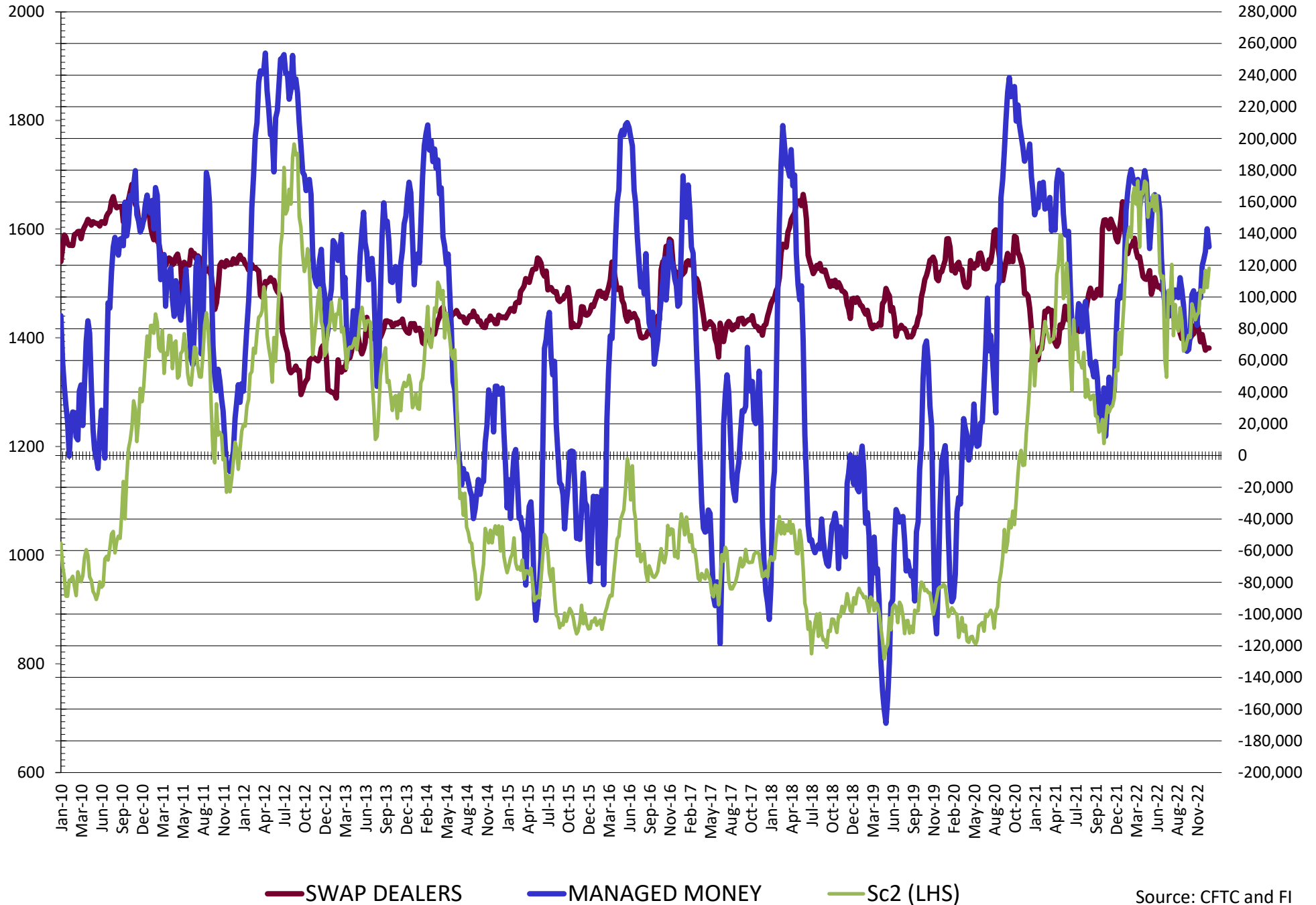
**DISAGGREGATED COMMITMENT OF TRADERS
FUTURES & OPTIONS NET POSITIONS
AS OF 01/10/2023
(IN THOUSAND CONTRACTS)**

	PRODUCER / MERCHANT / PROCESSOR / USER				(INDEX/ETF) SWAP DEALERS				(CTA/CPO/OTHER UNREGISTERED) MANAGED MONEY			
	10-Jan	3-Jan	27-Dec	20-Dec	10-Jan	3-Jan	27-Dec	20-Dec	10-Jan	3-Jan	27-Dec	20-Dec
	WHEAT											
Chicago	(19.2)	(29.1)	(25.1)	(21.8)	65.1	66.6	65.4	65.4	(63.1)	(52.7)	(56.2)	(59.3)
Kansas City	(23.6)	(29.8)	(29.5)	(30.9)	36.3	35.2	34.4	34.7	(8.0)	1.8	1.9	1.2
Minneapolis	0.8	(0.5)	(0.4)	2.4	1.6	1.4	1.3	1.1	(2.7)	(2.8)	(3.3)	(4.4)
All Wheat	(42.0)	(59.4)	(55.0)	(50.2)	103.0	103.2	101.1	101.2	(73.9)	(53.8)	(57.7)	(62.5)
CORN	(372.9)	(419.2)	(388.0)	(343.2)	219.0	223.5	220.7	221.4	149.6	196.5	159.3	113.8
OATS	(0.1)	(0.2)	0.0	0.2	(0.1)	0.0	0.0	(0.1)	(1.7)	(1.5)	(1.7)	(1.9)
SOYBEANS	(166.5)	(173.8)	(163.1)	(161.4)	67.8	67.8	66.4	71.4	131.7	143.0	128.6	123.6
SOY OIL	(156.6)	(166.4)	(168.3)	(160.3)	88.7	87.3	85.8	86.4	54.6	63.8	65.6	58.1
SOY MEAL	(250.1)	(250.6)	(242.7)	(240.1)	72.1	77.2	78.5	78.1	142.7	141.9	130.0	121.3

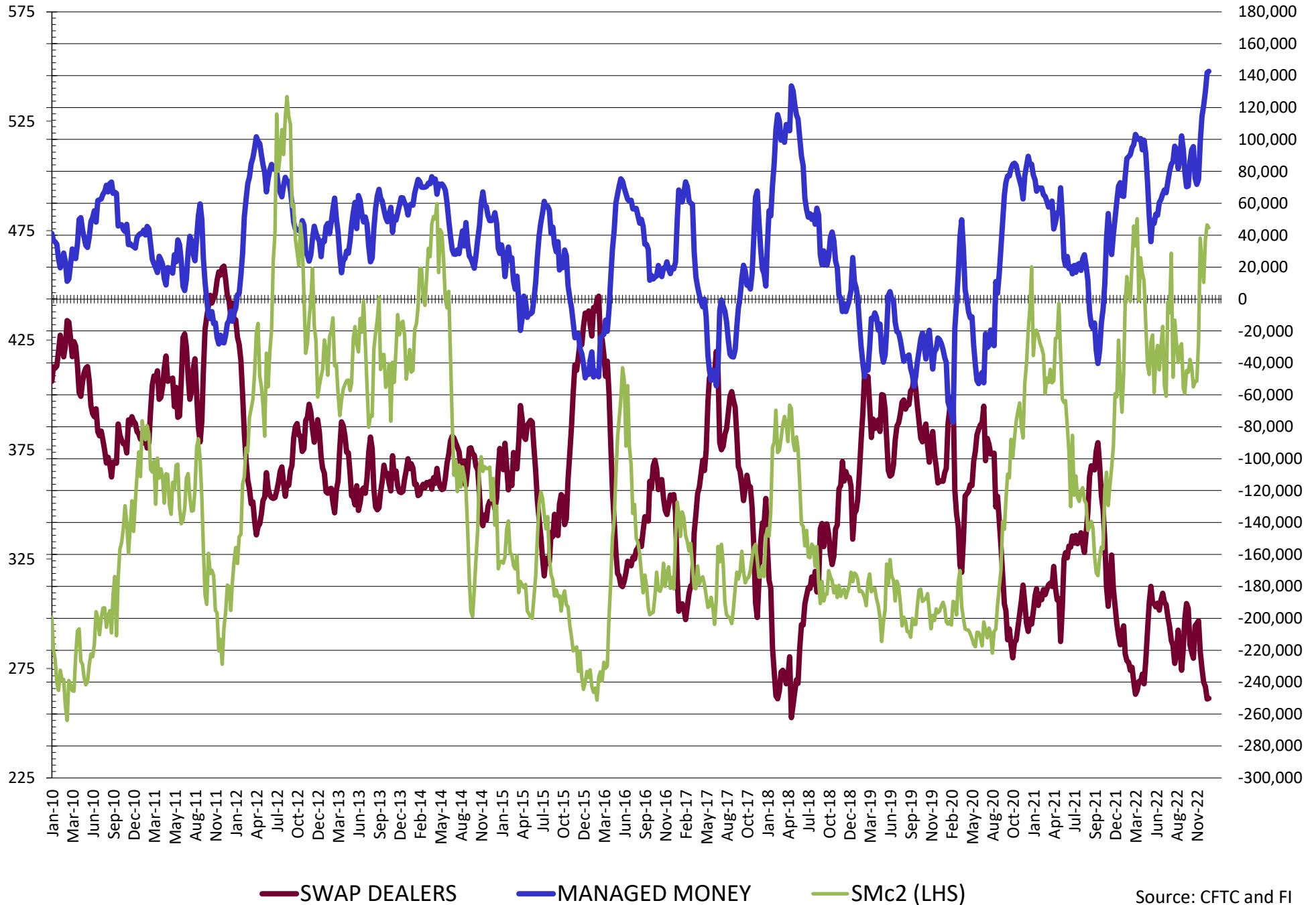
	TOTAL OPEN INTEREST				OTHER REPORTABLE				NON REPORTABLE			
	10-Jan	3-Jan	27-Dec	20-Dec	10-Jan	3-Jan	27-Dec	20-Dec	10-Jan	3-Jan	27-Dec	20-Dec
	WHEAT											
Chicago	394,847	388,172	387,675	402,381	19.3	19.3	18.9	18.5	(2.0)	(4.1)	(2.9)	(2.8)
Kansas City	176,931	164,954	162,296	165,627	(4.2)	(5.2)	(5.4)	(4.6)	(0.5)	(1.9)	(1.4)	(0.4)
Minneapolis	57,437	55,071	55,600	52,174	1.7	2.5	2.9	2.7	(1.4)	(0.6)	(0.4)	(1.8)
All Wheat	629,215	608,197	605,571	620,182	16.8	16.5	16.4	16.6	(4.0)	(6.6)	(4.8)	(5.1)
CORN	1,481,932	1,469,933	1,423,239	1,443,655	58.8	49.2	50.0	46.3	(54.5)	(50.0)	(50.0)	(50.0)
OATS	3,849	3,683	3,968	4,439	0.8	0.8	0.7	0.7	1.0	0.8	1.0	1.1
SOYBEANS	727,769	703,996	682,246	733,115	6.8	3.8	4.2	2.3	(39.9)	(40.7)	(36.1)	(35.9)
SOY OIL	408,665	406,954	403,106	445,456	3.4	4.7	3.4	4.1	9.8	10.6	13.5	11.6
SOY MEAL	454,472	445,612	435,113	453,264	12.5	12.0	15.7	18.7	22.8	19.6	18.5	22.0

SOURCE: CFTC & FI

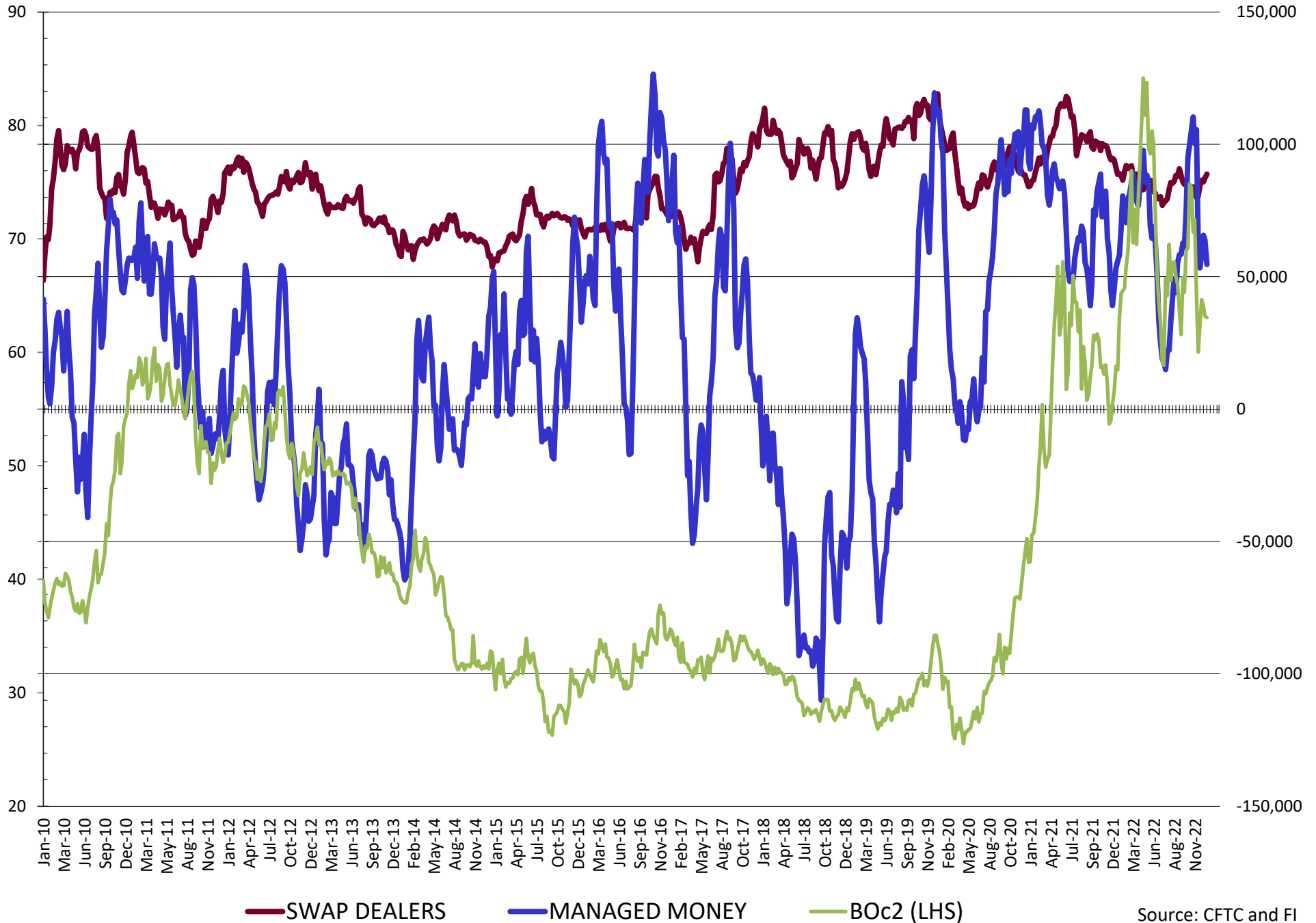
NET POSITION FUTURES AND OPTIONS OF SWAP AND MANAGED FUNDS IN SOYBEANS



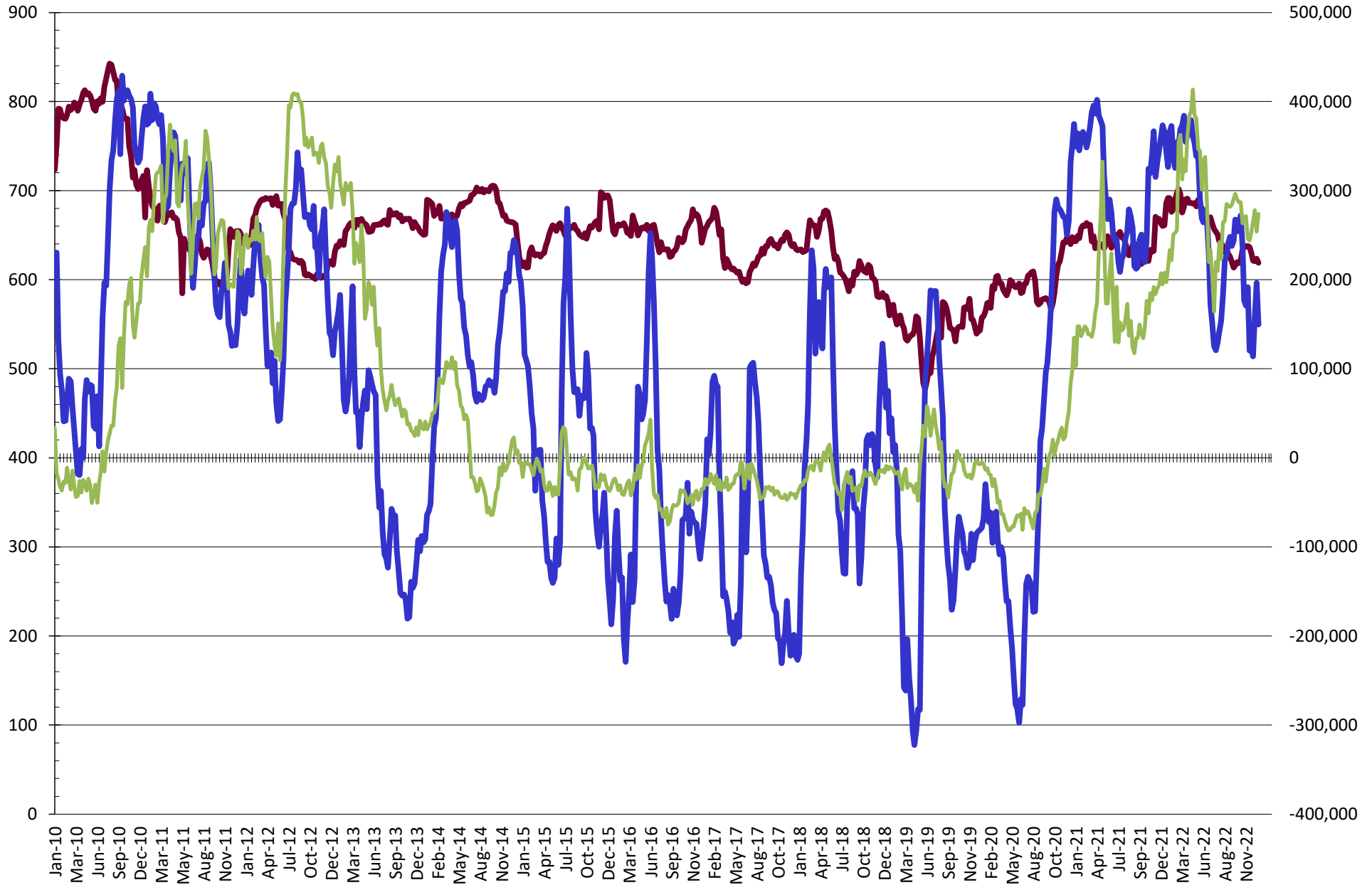
NET POSITION FUTURES AND OPTIONS OF SWAP AND MANAGED FUNDS IN SOYBEAN MEAL



NET POSITION FUTURES AND OPTIONS OF SWAP AND MANAGED FUNDS IN SOYBEAN OIL

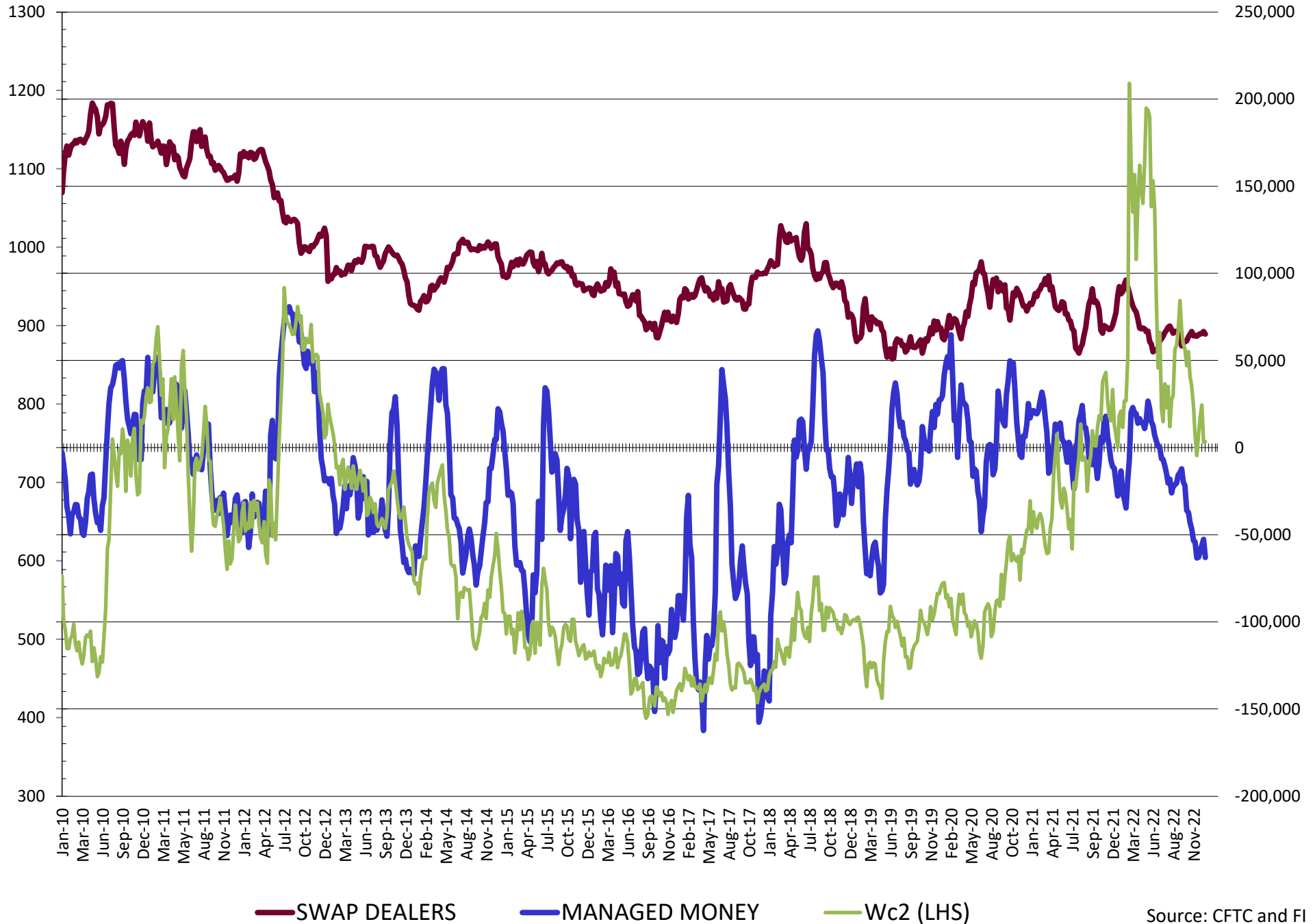


NET POSITION FUTURES AND OPTIONS OF SWAP AND MANAGED FUNDS IN CORN

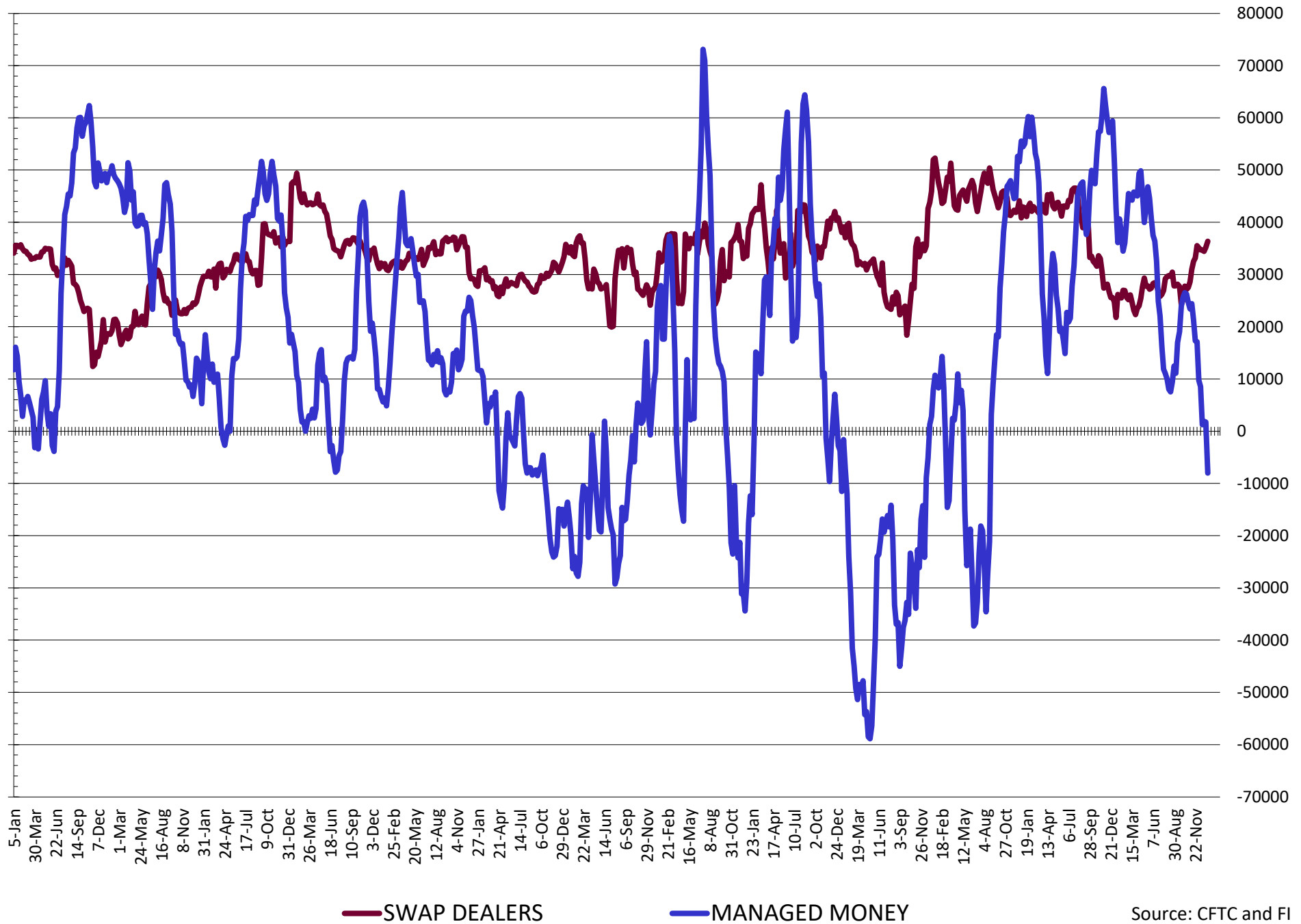


— SWAP DEALERS
 — MANAGED MONEY
 — Cc2 (LHS)

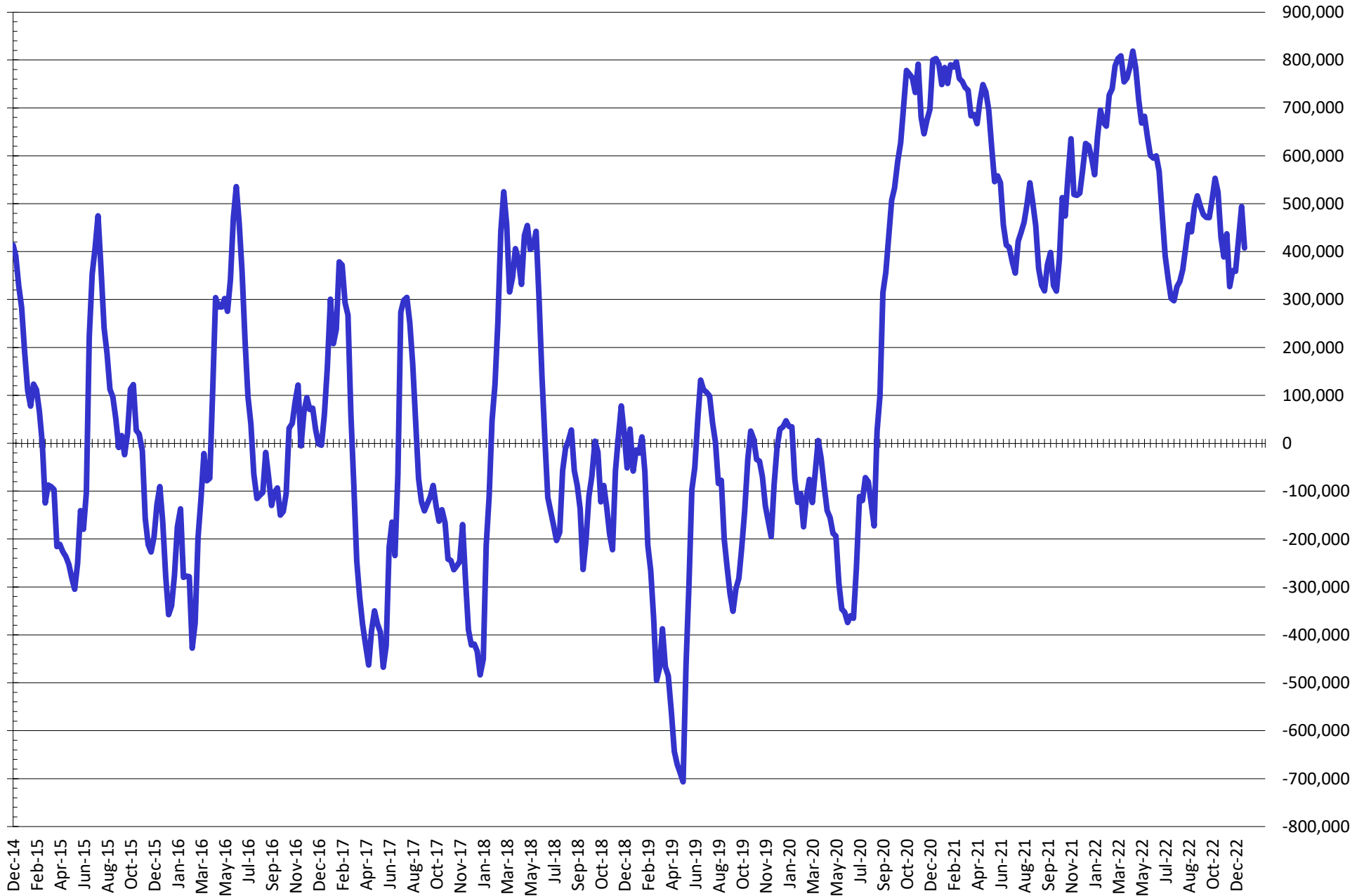
NET POSITION FUTURES AND OPTIONS OF SWAP AND MANAGED FUNDS IN CHICAGO WHEAT



NET POSITION FUTURES AND OPTIONS OF SWAP DEALERS AND MANAGED FUNDS IN KANSAS WHEAT



NET POSITION FUTURES AND OPTIONS OF SWAP AND MANAGED FUNDS IN COMBINED SRW, HRW, CORN, SOYBEANS, SOYMEAL AND SOYOIL



— Net Managed Money

Source: CFTC and FI
1/13/2023

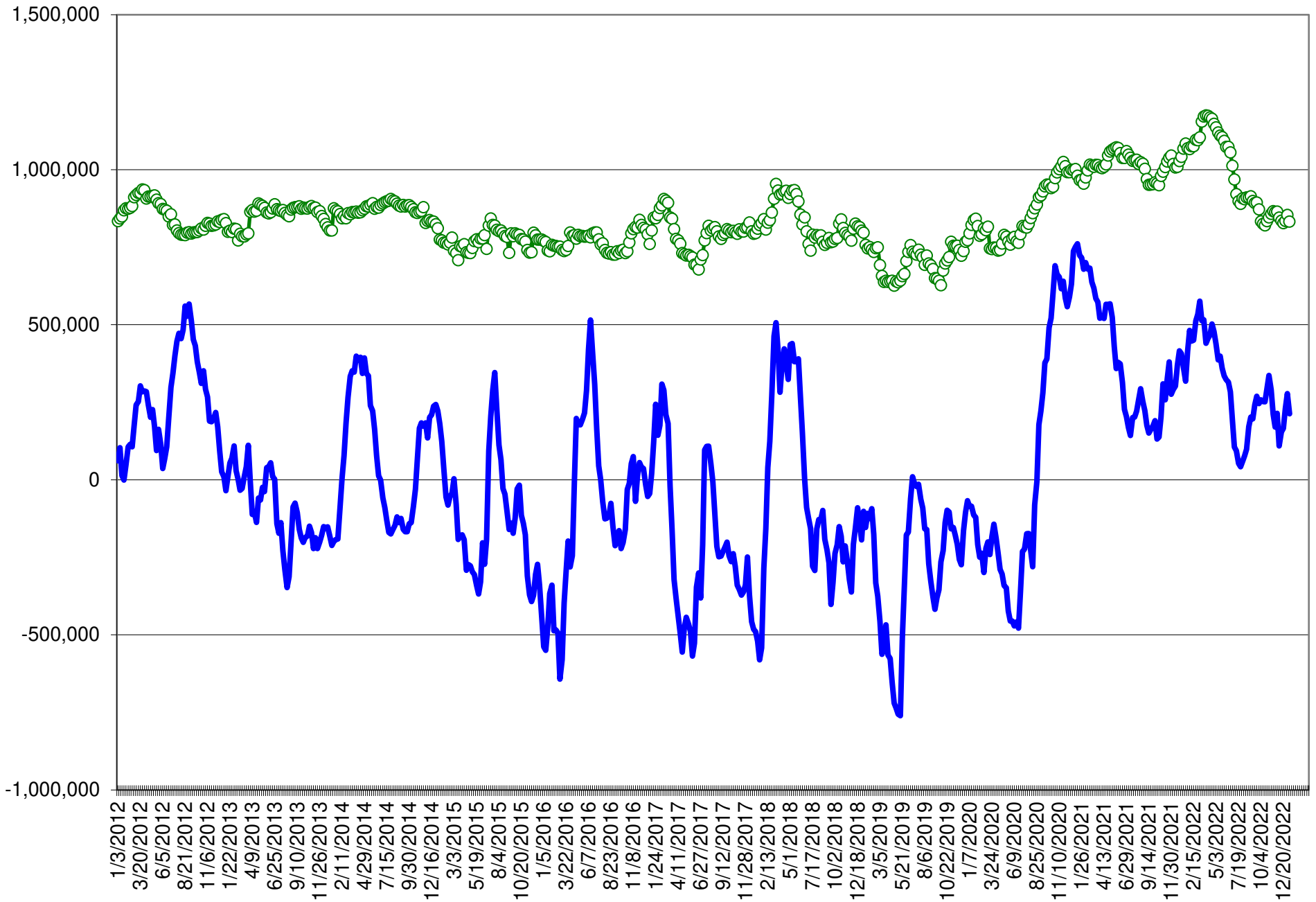
COMMITMENT OF TRADERS
FUTURES & OPTIONS NET POSITIONS (INDEX BROKEN OUT)
AS OF 01/10/2023
(IN THOUSAND CONTRACTS)

	COMMERCIAL				(FUND) NON COMMERCIAL				(SPEC) NON-REPORTABLE			
	10-Jan	3-Jan	27-Dec	20-Dec	10-Jan	3-Jan	27-Dec	20-Dec	10-Jan	3-Jan	27-Dec	20-Dec
	WHEAT											
Chicago	(22.7)	(34.1)	(30.2)	(26.8)	(73.5)	(62.8)	(65.3)	(67.1)	(2.0)	(4.1)	(2.9)	(2.8)
Kansas City	(22.0)	(28.9)	(28.4)	(29.6)	(24.0)	(16.1)	(15.9)	(16.0)	(0.5)	(1.9)	(1.4)	(0.4)
Minneapolis	-	-	-	-	-	-	-	-	-	-	-	-
All Wheat	(44.8)	(63.0)	(58.6)	(56.4)	(97.4)	(78.9)	(81.2)	(83.1)	(2.6)	(6.0)	(4.4)	(3.2)
CORN	(378.8)	(424.9)	(392.5)	(346.8)	77.5	113.8	86.0	42.5	(54.5)	(50.0)	(42.0)	(38.4)
OATS	-	-	-	-	-	-	-	-	-	-	-	-
SOYBEANS	(178.3)	(184.2)	(176.4)	(171.8)	96.4	100.2	91.2	86.3	(39.9)	(40.7)	(36.1)	(35.9)
SOY OIL	(133.7)	(147.0)	(149.0)	(140.2)	28.2	36.0	35.6	28.0	9.8	10.6	13.5	11.6
SOY MEAL	(245.5)	(246.2)	(237.7)	(235.0)	108.0	106.9	98.0	92.2	22.8	19.6	18.5	22.0

	TOTAL OPEN INTEREST				(INDEX) COMMERCIAL INDEX TRADERS				(INDEX) % NET OF TOTAL OPEN INTEREST			
	10-Jan	3-Jan	27-Dec	20-Dec	10-Jan	3-Jan	27-Dec	20-Dec	10-Jan	3-Jan	27-Dec	20-Dec
	WHEAT											
Chicago	394,847	388,172	387,675	402,381	98.2	101.0	98.4	96.7	24.9%	26.0%	25.4%	24.0%
Kansas City	176,931	164,954	162,296	165,627	46.5	47.0	45.7	46.0	26.3%	28.5%	28.2%	27.8%
Minneapolis	-	-	-	-	-	-	-	-	-	-	-	-
All Wheat	571,778	553,126	549,971	568,008	144.8	148.0	144.1	142.7	25.3%	26.8%	26.2%	25.1%
CORN	1,481,932	1,469,933	1,423,239	1,443,655	355.8	361.1	348.5	342.6	24.0%	24.6%	24.5%	23.7%
OATS	-	-	-	-	-	-	-	-	-	-	-	-
SOYBEANS	727,769	703,996	682,246	733,115	121.8	124.7	121.3	121.4	16.7%	17.7%	17.8%	16.6%
SOY OIL	408,665	406,954	403,106	445,456	95.6	100.3	99.9	100.5	23.4%	24.7%	24.8%	22.6%
SOY MEAL	454,472	445,612	435,113	453,264	114.7	119.8	121.2	120.8	25.2%	26.9%	27.9%	26.6%

SOURCE: CFTC & FI

NET POSITION FUTURES AND OPTIONS OF SPECULATORS AND INDEX FUNDS IN COMBINED SRW, HRW, CORN, SOYBEANS, SOYMEAL AND SOYOIL



Source: CFTC and FI

○ Net Index

— Net Speculator

Traditional Daily Estimate of Funds 1/9/23

	(Neg)-"Short"	Pos-"Long"			
Actual less Est.	(19.7)	(2.3)	5.6	(0.9)	(5.6)
	Corn	Bean	Chi. Wheat	Meal	Oil
Actual	233.8	140.3	(39.7)	157.7	62.1
11-Jan	1.0	4.0	4.0	2.0	(1.0)
12-Jan	11.0	11.0	2.0	3.0	3.0
13-Jan	2.0	4.0	1.0	(3.0)	(1.0)
16-Jan					
17-Jan					
FI Est. of Futures Only 11/15/22	247.8	159.3	(32.7)	159.7	63.1
FI Est. Futures & Options	222.4	157.5	(36.8)	157.2	59.0
Futures only record long "Traditional Funds"	547.7 1/26/2021	280.9 11/10/2020	86.5 8/7/2018	167.5 5/1/2018	160.2 11/1/2016
Futures only record short	(235.0) 6/9/2020	(118.3) 4/30/2019	(130.0) 4/25/2017	(49.5) 3/1/2016	(69.8) 9/18/2018
Futures and options record net long	557.6 1/12/2021	270.9 10/6/2020	64.8 8/7/2012	132.1 5/1/2018	159.2 1/1/2016
Futures and options record net short	(270.6) 4/26/2019	(132.0) 4/30/2019	(143.3) 4/25/2017	(64.1) 3/1/2016	(77.8) 9/18/2018

Managed Money Daily Estimate of Funds

	Corn	Bean	Chi. Wheat	Meal	Oil
Latest CFTC Fut. Only	149.7	132.6	(62.6)	143.6	51.0
Latest CFTC F&O	149.6	131.7	(63.1)	142.7	54.6
	Corn	Bean	Chi. Wheat	Meal	Oil
FI Est. Managed Fut. Only	164	152	(56)	146	52
FI Est. Managed Money F&O	164	151	(56)	145	56

Index Funds Latest Positions (as of last Tuesday)

Index Futures & Options	355.8	121.8	98.2	NA	95.6
Change From Previous Week	(5.3)	(2.9)	(2.8)	NA	(4.8)

Source: Reuters, CFTC & FI (FI est. are noted with latest date)

Disclaimer

TO CLIENTS/PROSPECTS OF FUTURES INTERNATIONAL, SEE RISK DISCLOSURE BELOW:

THIS COMMUNICATION IS CONVEYED AS A SOLICITATION FOR ENTERING INTO A DERIVATIVES TRANSACTION.

Any trading recommendations and market or other information to Customer by Futures International (FI), although based upon information obtained from sources believed by FI to be reliable may not be accurate and may be changed without notice to customer. FI makes no guarantee as to the accuracy or completeness of any of the information or recommendations furnished to Customer. Customer understands that FI, its managers, employees and/or affiliates may have a position in commodity futures, options or other derivatives which may not be consistent with the recommendations furnished by FI to Customer.

The risk of trading futures and options and other derivatives involves a substantial risk of loss and is not suitable for all persons. In purchasing an option, the risk is limited to the premium paid, and all commissions and fees involved with the trade. When an option is shorted or written, the writer of the option has unlimited risk with respect to the option written. The use of options strategies such as a straddles and strangles involve multiple option positions and may substantially increase the amount of commissions and fees paid to execute the strategy. Option prices do not necessarily move in tandem with cash or futures prices. Each person must consider whether a particular trade, combination of trades or strategy is suitable for that person's financial means and objectives.

This material may include discussions of seasonal patterns, however, futures prices have already factored in the seasonal aspects of supply and demand, and seasonal patterns are no indication of future market trends. Finally, past performance is not indicative of future results.

This communication may contain links to third party websites which are not under the control of FI and FI is not responsible for their content. Products and services are offered only in jurisdictions where solicitation and sale are lawful, and in accordance with applicable laws and regulations in each such jurisdiction.