

US Weekly Petroleum Status Report - Ethanol

	Ethanol Production		Change		Ethanol Stocks		Change		Days of Inv.
	Mbbl	Last Week	Last Year	Mbbl	Last Week	Last Year			
2/10/2023	1014	14	0.5%	25,339	922	-0.6%	24.1		
2/17/2023	1029	15	0.5%	25,588	249	0.3%	24.6		
2/24/2023	1003	(26)	0.6%	24,775	(813)	-0.6%	25.5		
3/3/2023	1010	7	-1.8%	25,320	545	0.2%	24.5		
3/10/2023	1014	4	-1.2%	26,394	1,074	1.7%	25.0		
3/17/2023	997	(17)	-4.3%	26,188	(206)	0.2%	26.5		
3/24/2023	1003	6	-3.2%	25,527	(661)	-3.8%	26.1		
3/31/2023	1003	0	0.0%	25,136	(391)	-3.0%	25.5		
4/7/2023	959	(44)	-3.6%	25,128	(8)	1.3%	26.2		

Source: EIA and FI

US Weekly Ethanol By PADD

	7-Apr 2023	31-Mar 2023	Change	Weekly Percent	4-Week Percent	YOY Percent
Ethanol Stocks						
Total Stocks	25128	25136	(8)	0.0%	-4.0%	1.3%
East Coast PADD 1	7595	7887	(292)	-3.7%	-8.8%	-3.2%
Midwest PADD 2	10313	10234	79	0.8%	-0.1%	-3.3%
Gulf Coast PADD 3	4526	4382	144	3.3%	-5.5%	26.1%
Rocky Mt. PADD 4	339	343	(4)	-1.2%	-14.6%	-5.8%
West Coast PADD 5	2355	2290	65	2.8%	0.4%	0.2%
	7-Apr 2023	31-Mar 2023	Change	Weekly Percent	4-Week Percent	YOY Percent
Plant Production						
Total Production	959	1003	(44)	-4.4%	-3.8%	-3.6%
East Coast PADD 1	12	11	1	9.1%	9.1%	
Midwest PADD 2	912	957	(45)	-4.7%	-4.4%	-2.5%
Gulf Coast PADD 3	20	22	(2)	-9.1%	25.0%	
Rocky Mt. PADD 4	11	10	1	10.0%	0.0%	
West Coast PADD 5	4	3	1	33.3%	-20.0%	

Source: EIA and FI

Source: EIA and FI

Page 1	Weekly Ethanol Snapshot	Page 12	Net Ethanol Blend
Page 2	Ethanol Table	Page 13	Selected Commodities Indexed vs. WTI \$
Page 3	Production Chart	Page 14	Ethanol-RBOB
Page 4	Production and Stocks	Page 15	Ethanol Crush with implied costs
Page 5	Ethanol Stocks	Page 16	Chicago Ethanol with straight corn crush
Page 6	PADD Ethanol Stocks	Page 17	CBOT corn crush with IL DDGS
Page 7	Gasoline Ethanol Stocks	Page 18	Disclaimer
Page 8	Gasoline Supplied		
Page 9	Ethanol Imports		
Page 10	US Annualized Implied Corn Use		
Page 11	Net Ethanol Consumption		

Source: Reuters, Bloomberg, EIA, CME and FI

Created by Terry Reilly

Futures International

treilly@futures-int.com

US Weekly Petroleum Status Report

	Ethanol Production 000 Barrels Per Day	Change from Last Week	Change from Last Month	Change from Last Year	Ethanol Stocks 000 Barrels	Change from Last Week	Change from Last Month	Change from Last Year	Days of Ethanol Inventory
7/1/2022	1044	(7)	0.5%	-2.2%	23,490	744	-0.6%	11.1%	21.8
7/8/2022	1005	(39)	-5.2%	-3.5%	23,606	116	1.8%	11.7%	23.4
7/15/2022	1034	29	-2.0%	0.6%	23,553	(53)	0.3%	4.6%	22.8
7/22/2022	1021	(13)	-2.9%	0.7%	23,328	(225)	2.6%	2.6%	23.1
7/29/2022	1043	22	-0.1%	3.0%	23,394	66	-0.4%	3.3%	22.4
8/5/2022	1022	(21)	1.7%	3.7%	23,256	(138)	-1.5%	4.4%	22.9
8/12/2022	983	(39)	-4.9%	1.0%	23,446	190	-0.5%	8.8%	23.7
8/19/2022	987	4	-3.3%	5.8%	23,807	361	2.1%	12.2%	23.8
8/26/2022	970	(17)	-7.0%	7.2%	23,533	(274)	0.6%	11.5%	24.5
9/2/2022	989	19	-3.2%	7.2%	23,138	(395)	-0.5%	13.5%	23.8
9/9/2022	963	(26)	-2.0%	2.8%	22,843	(295)	-2.6%	14.2%	24.0
9/16/2022	901	(62)	-8.7%	-2.7%	22,501	(342)	-5.5%	11.9%	25.4
9/23/2022	855	(46)	-11.9%	-6.5%	22,691	190	-3.6%	12.2%	26.3
9/30/2022	889	34	-10.1%	-9.1%	21,685	(1006)	-6.3%	8.8%	25.5
10/7/2022	932	43	-3.2%	-9.7%	21,863	178	-4.3%	10.2%	23.3
10/14/2022	1016	84	12.8%	-7.3%	21,844	(19)	-2.9%	8.8%	21.5
10/21/2022	1033	17	20.8%	-6.6%	22,291	447	-1.8%	11.9%	21.1
10/28/2022	1040	7	17.0%	-6.1%	22,232	(59)	2.5%	10.4%	21.4
11/4/2022	1051	11	12.8%	1.2%	22,192	(40)	1.5%	9.4%	21.2
11/11/2022	1011	(40)	-0.5%	-4.6%	21,298	(894)	-2.5%	6.1%	22.0
11/18/2022	1041	30	0.8%	-3.5%	22,829	1531	2.4%	13.2%	20.5
11/25/2022	1018	(23)	-2.1%	-1.6%	22,934	105	3.2%	13.0%	22.4
12/2/2022	1077	59	2.5%	-1.2%	23,257	323	4.8%	13.6%	21.3
12/9/2022	1061	(16)	4.9%	-2.4%	24,409	1152	14.6%	16.9%	21.9
12/16/2022	1029	(32)	-1.2%	-2.1%	24,067	(342)	5.4%	16.2%	23.7
12/23/2022	963	(66)	-5.4%	-9.1%	24,636	569	7.4%	19.2%	25.0
12/30/2022	844	(119)	-21.6%	-19.5%	24,444	(192)	5.1%	14.4%	29.2
1/6/2023	943	99	-11.1%	-6.3%	23,800	(644)	-2.5%	3.9%	25.9
1/13/2023	1008	65	-2.0%	-4.3%	23,402	(398)	-2.8%	-0.8%	23.6
1/20/2023	1012	4	5.1%	-2.2%	25,077	1675	1.8%	2.5%	23.1
1/27/2023	1028	16	21.8%	-1.2%	24,442	(635)	0.0%	-5.5%	24.4
2/3/2023	1000	(28)	6.0%	0.6%	24,417	(25)	2.6%	-1.5%	24.4
2/10/2023	1014	14	0.6%	0.5%	25,339	922	8.3%	-0.6%	24.1
2/17/2023	1029	15	1.7%	0.5%	25,588	249	2.0%	0.3%	24.6
2/24/2023	1003	(26)	-2.4%	0.6%	24,775	(813)	1.4%	-0.6%	25.5
3/3/2023	1010	7	1.0%	-1.8%	25,320	545	3.7%	0.2%	24.5
3/10/2023	1014	4	0.0%	-1.2%	26,394	1074	4.2%	1.7%	25.0
3/17/2023	997	(17)	-3.1%	-4.3%	26,188	(206)	2.3%	0.2%	26.5
3/24/2023	1003	6	0.0%	-3.2%	25,527	(661)	3.0%	-3.8%	26.1
3/31/2023	1003	0	-0.7%	0.0%	25,136	(391)	-0.7%	-3.0%	25.5
4/7/2023	959	(44)	-5.4%	-3.6%	25,128	(8)	-4.8%	1.3%	26.2

4-week average change: -14

4-week average change: -317

YOY Δ

CY 21-22 1024 2021-22 season average

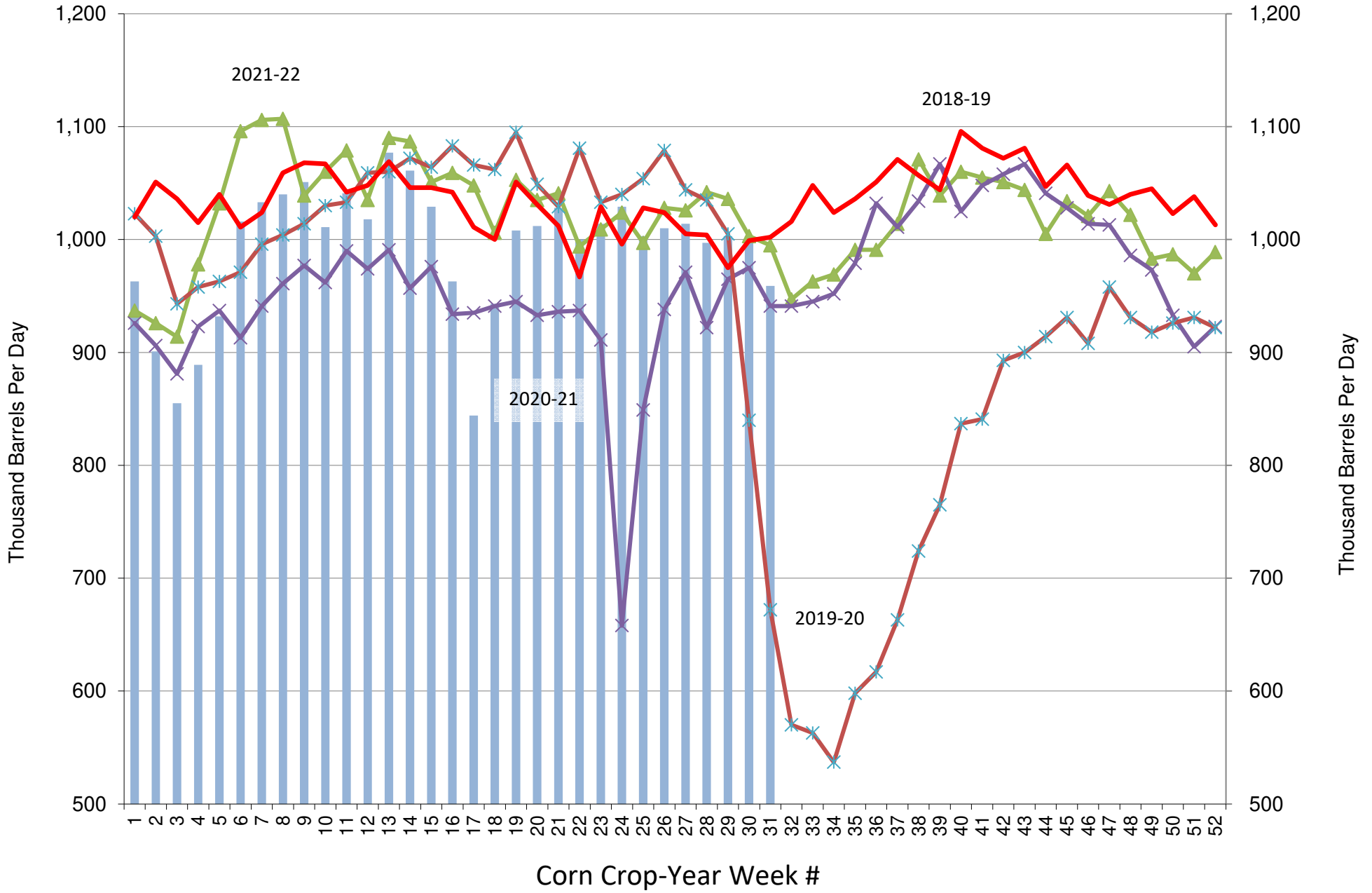
6.8%

CY to Date: 993 2022-23 season average

-3.1%

Source: Reuters, EIA, FI

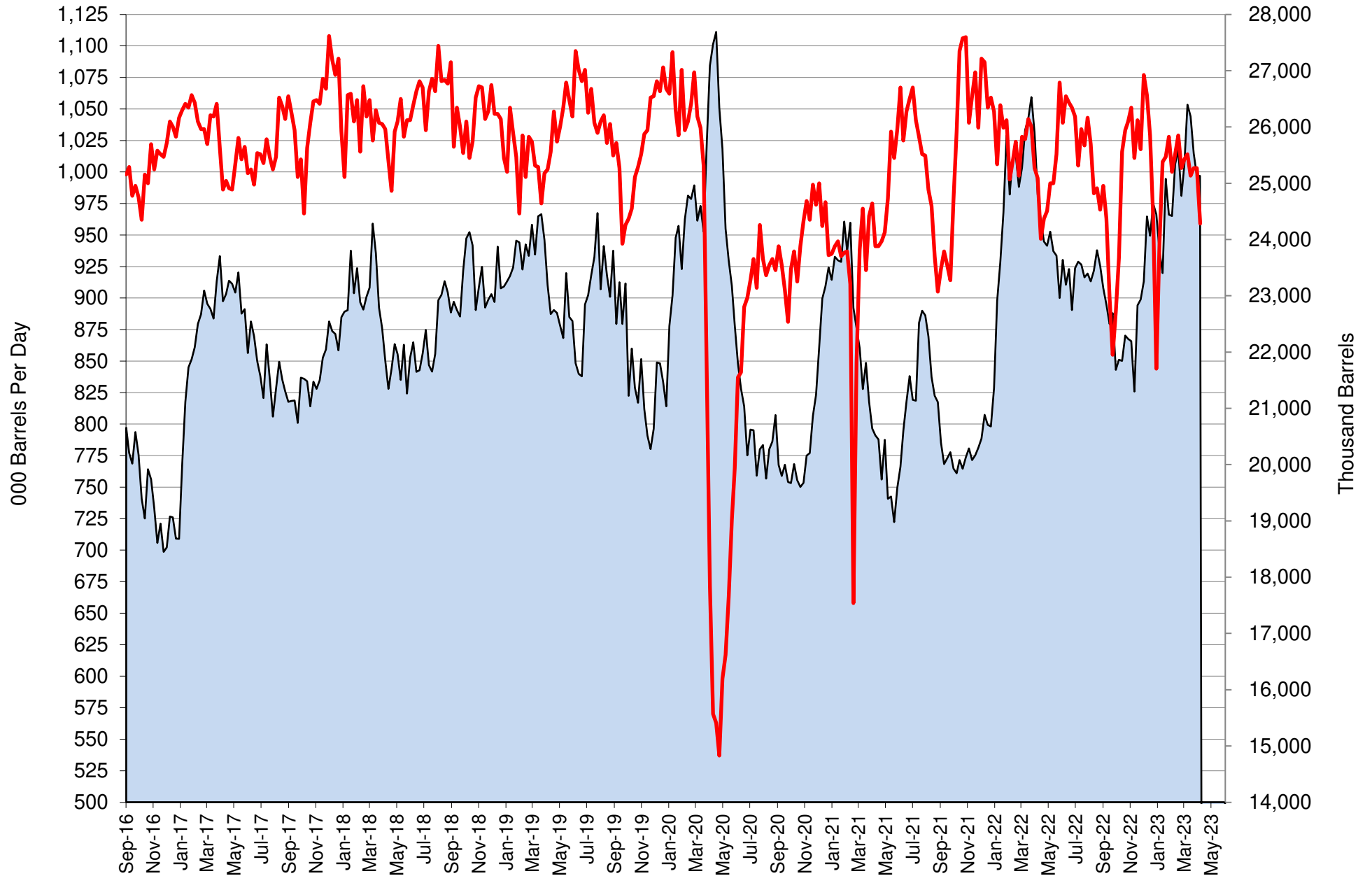
US Weekly Ethanol Production



Source: EIA & FI

■ 2022-23
 ▲ 2021-22
 ✕ 2020-21
 ✕ 2019-20
 — 2018-19

US Weekly Ethanol Production and Stocks

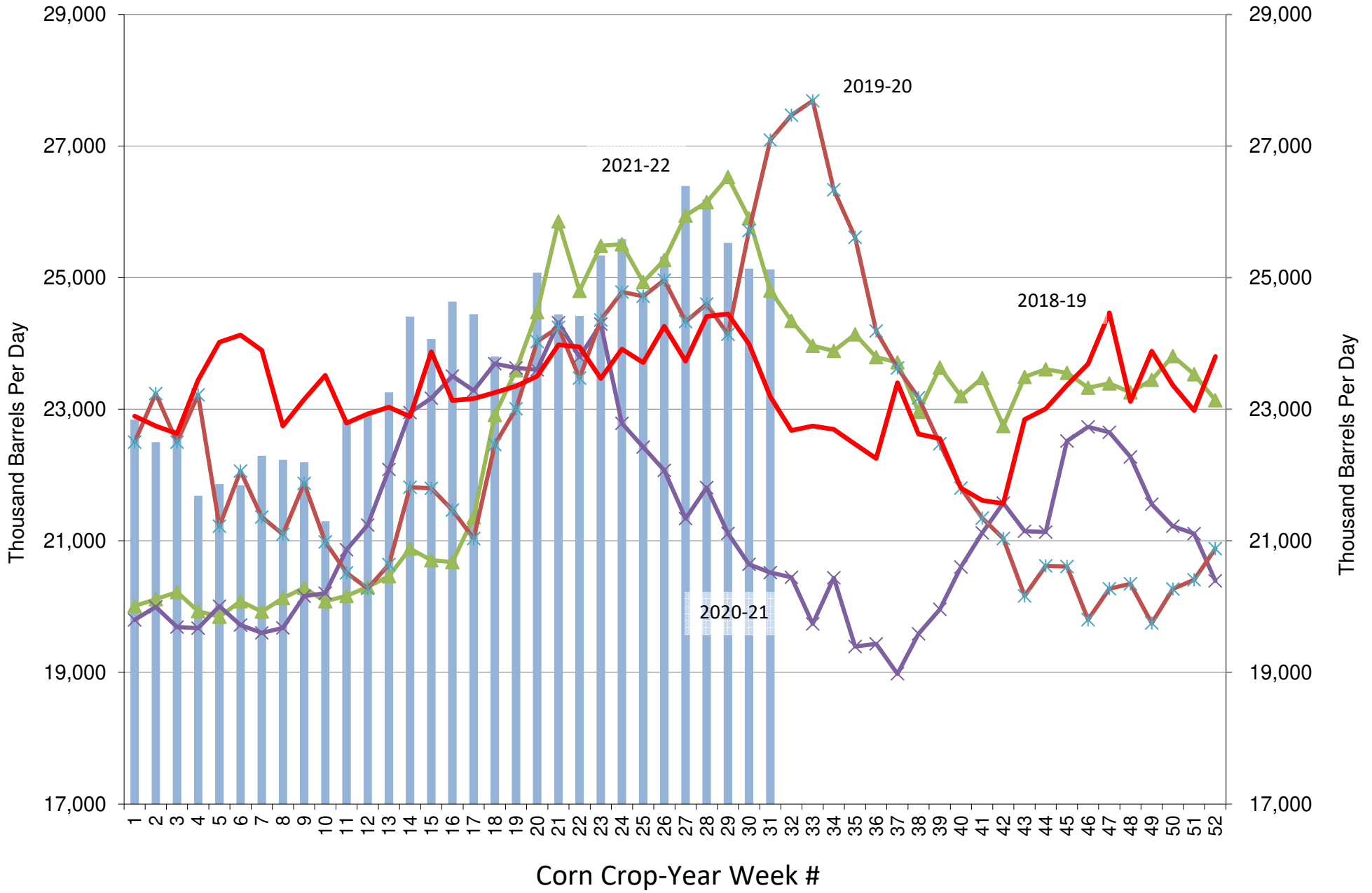


Source: EIA & FI

Stocks (1000bd)

Production (1000bd)

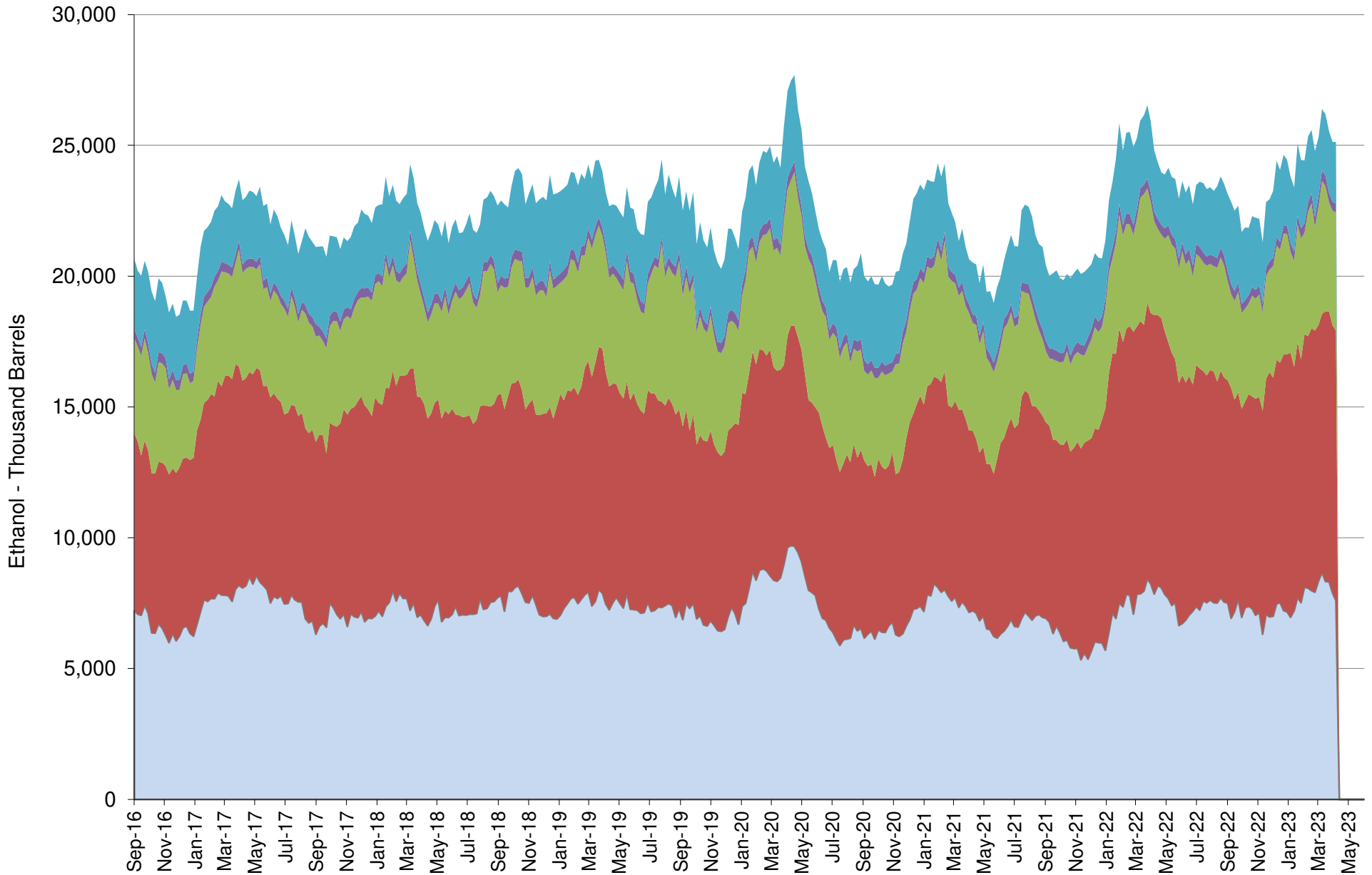
US Weekly Ethanol Stocks (corn crop year)



Source: EIA & FI

■ 2022-23
 ▲ 2021-22
 ✕ 2020-21
 ✱ 2019-20
 — 2018-19

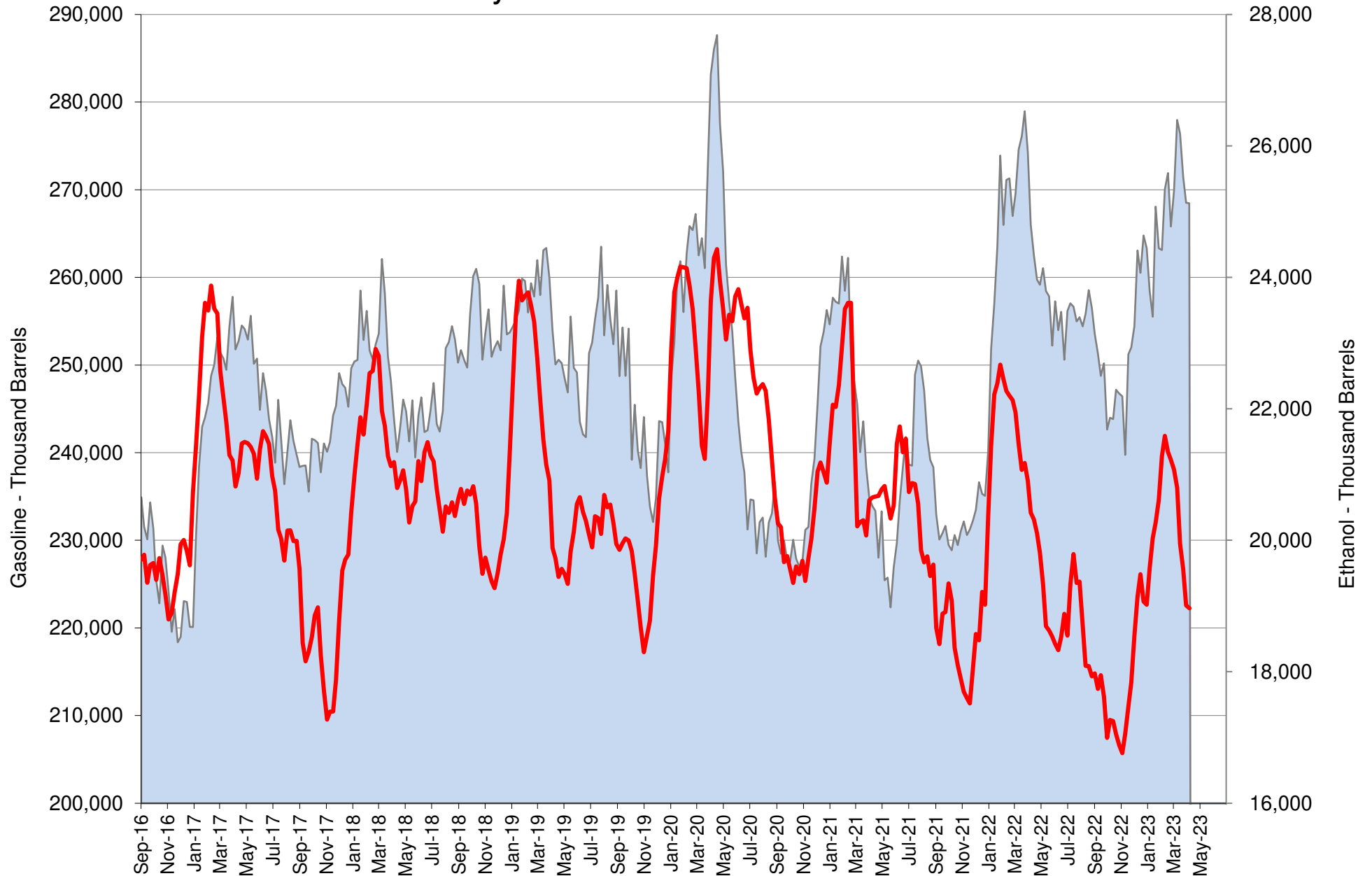
US Weekly Ethanol Stocks by PADD



Source: EIA & FI

■ PADD1 ■ PADD2 ■ PADD3 ■ PADD4 ■ PADD5

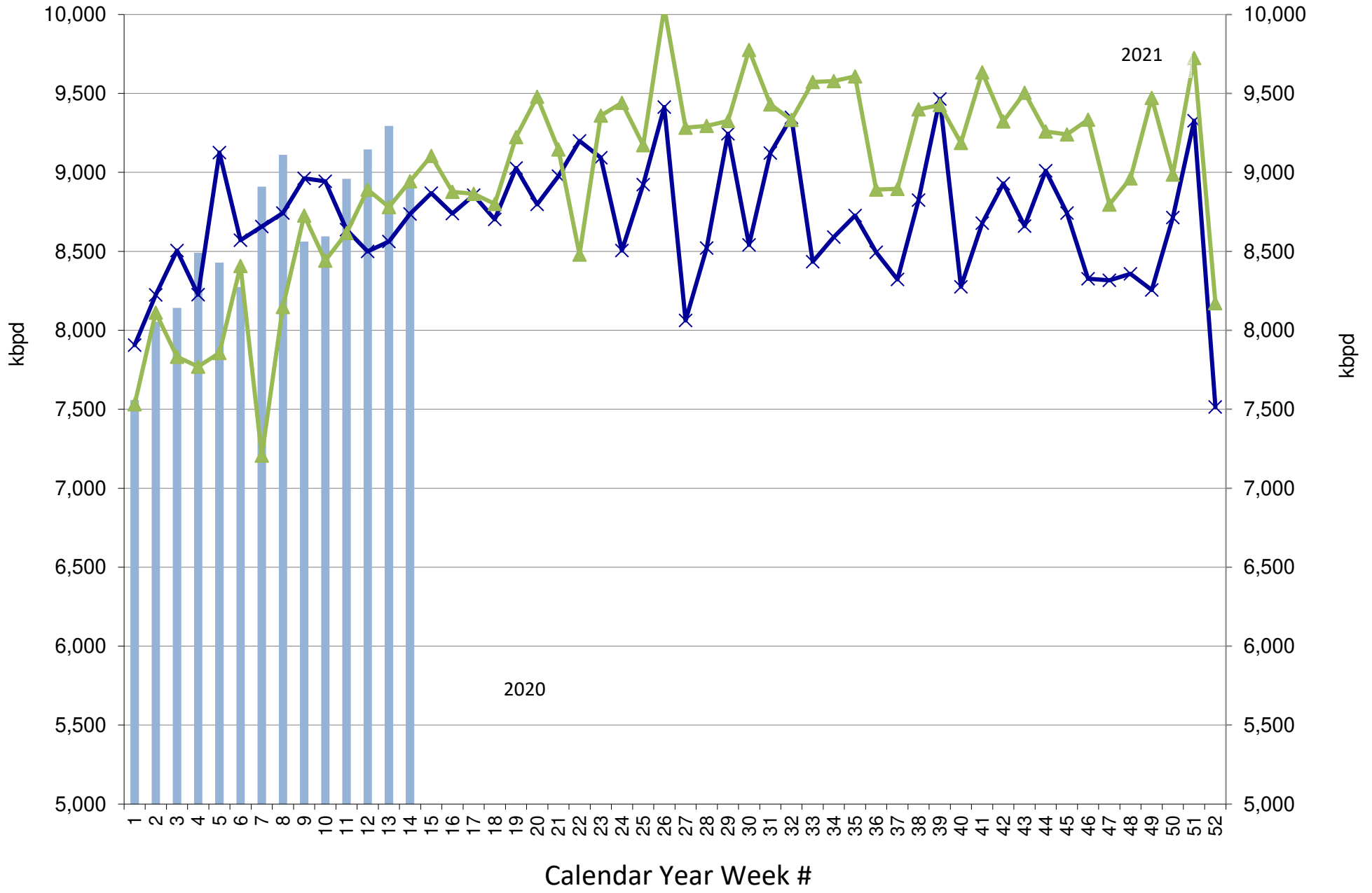
US Weekly Gasoline and Ethanol Stocks



Source: EIA & FI

Stocks (1000bd) — US Gasoline Ending Stocks (thousand barrels)

US Weekly Gasoline Product Supplied



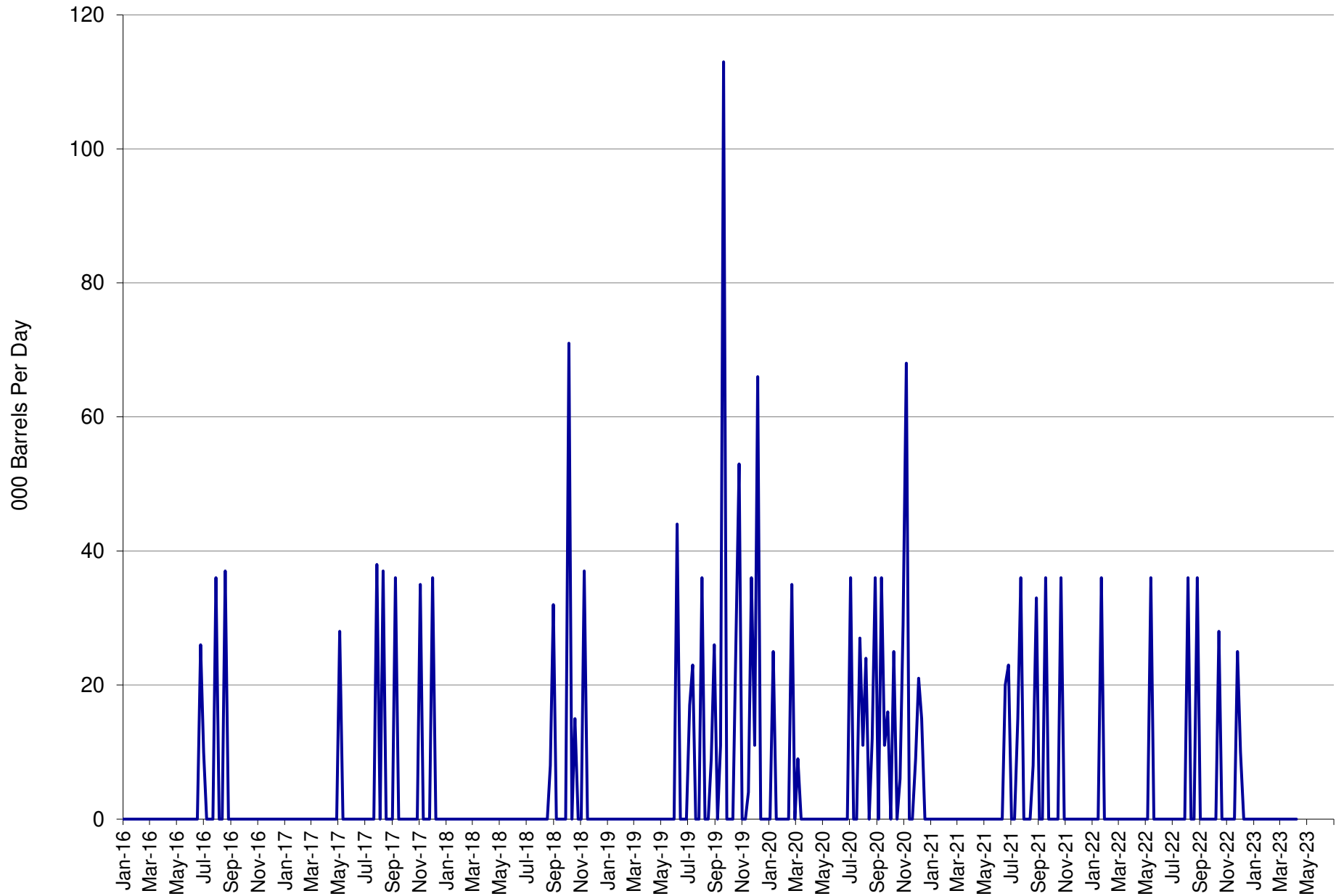
Source: EIA & FI

Gasoline Product Supplied (kbpd)

2022

2021

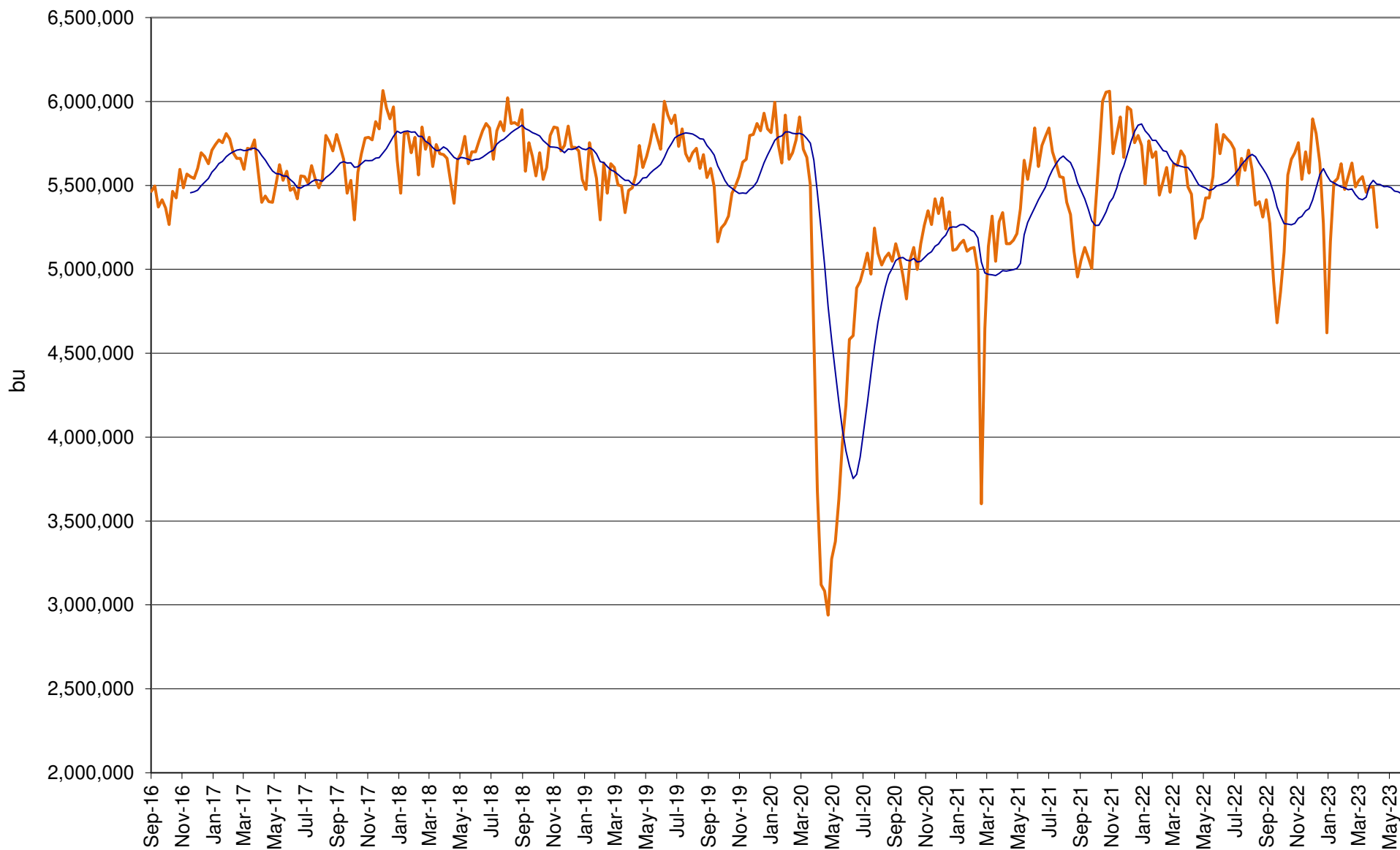
US Weekly Ethanol Imports



Source: EIA & FI

— Imports (BPD)

US Annualized Implied Corn Use

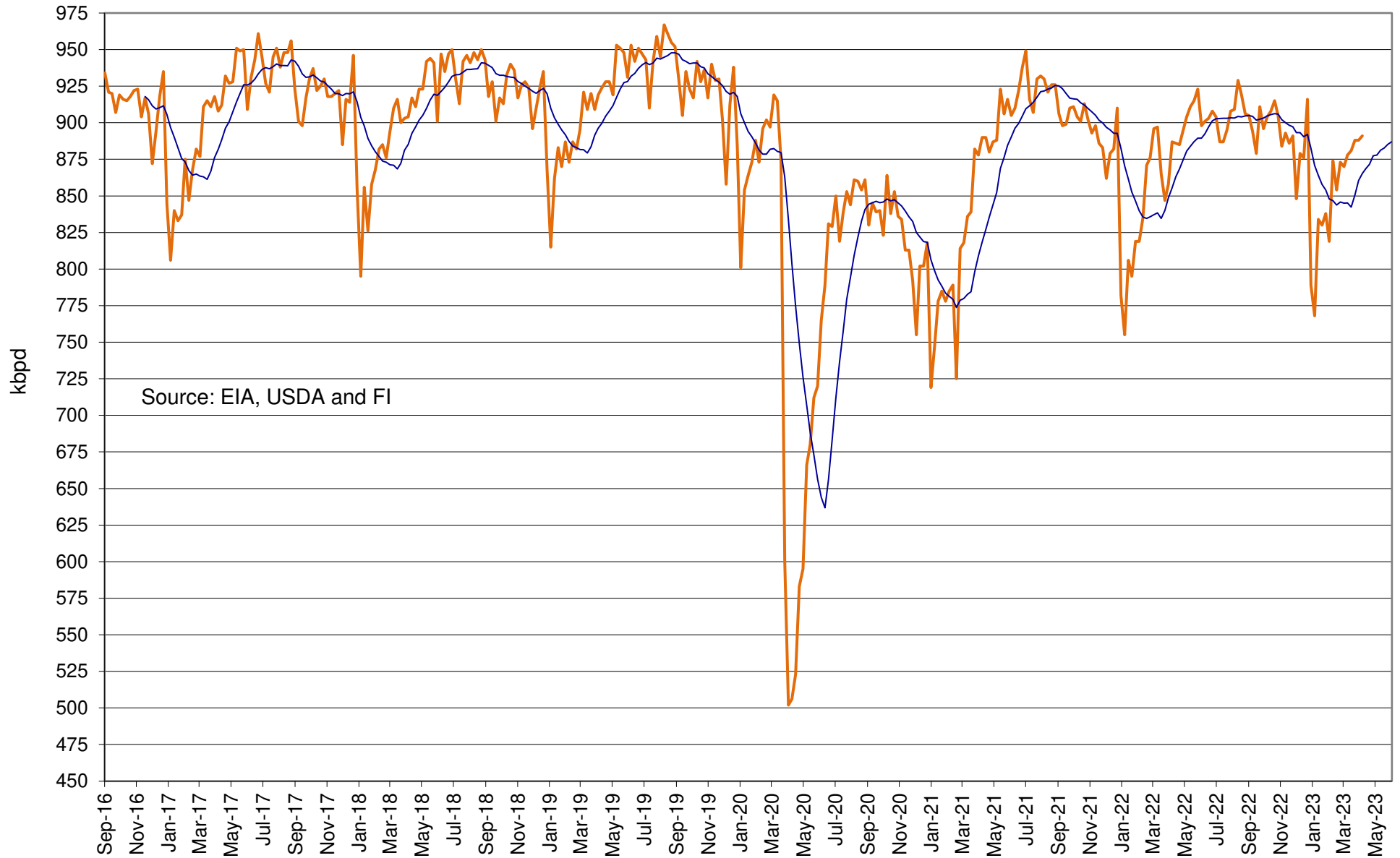


Source: EIA, USDA and FI

— US

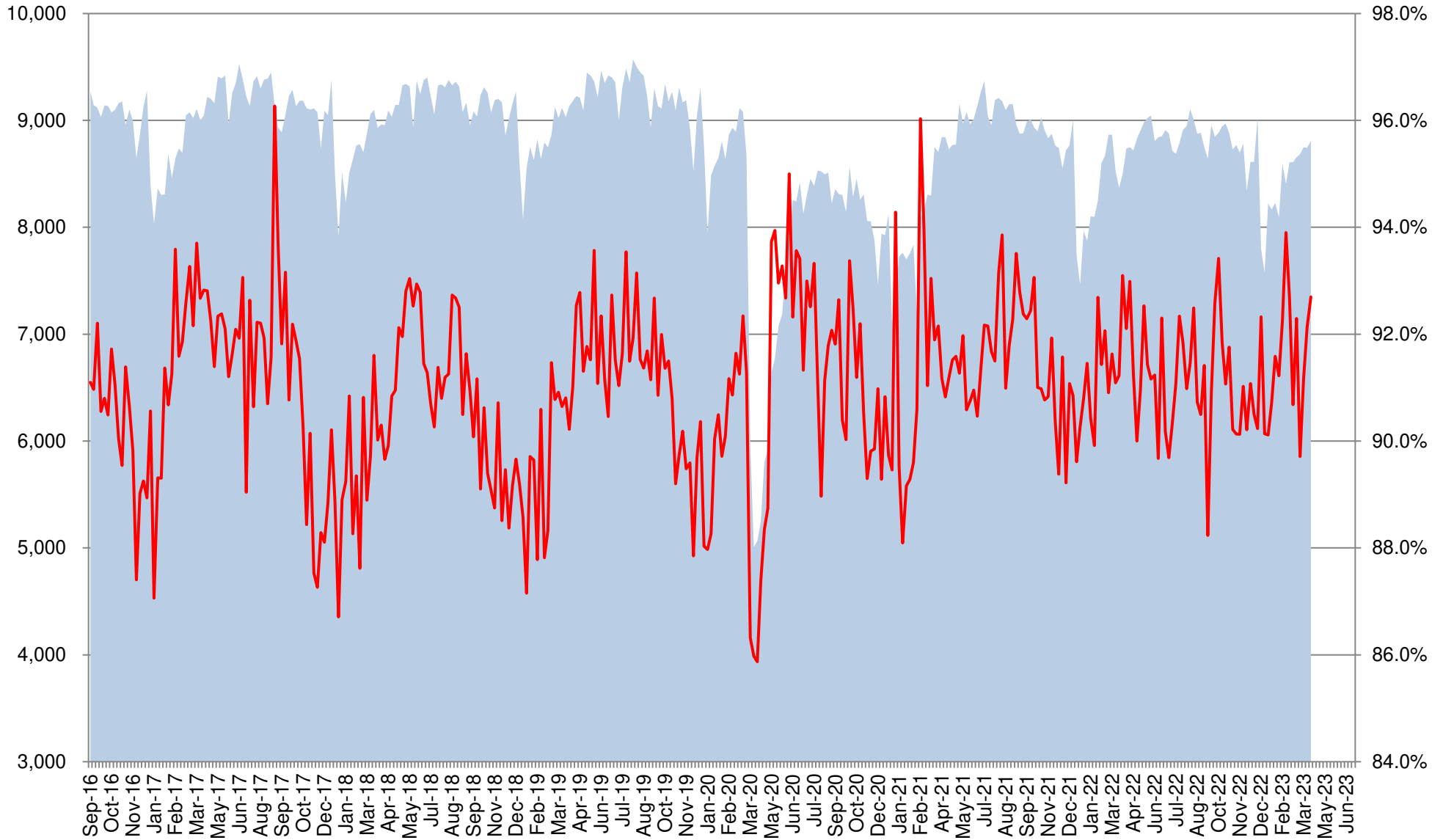
— 12 per. Mov. Avg. (US)

Refinery and Blender Net Input of Oxygenates Fuel Ethanol



— Refinery and Blender Net Input of Oxygenates Fuel Ethanol — 12 per. Mov. Avg.

US Net Blender Input of Fuel Ethanol and % Blend of Net Production of Finished Motor Gasoline



Source: EIA, USDA and FI

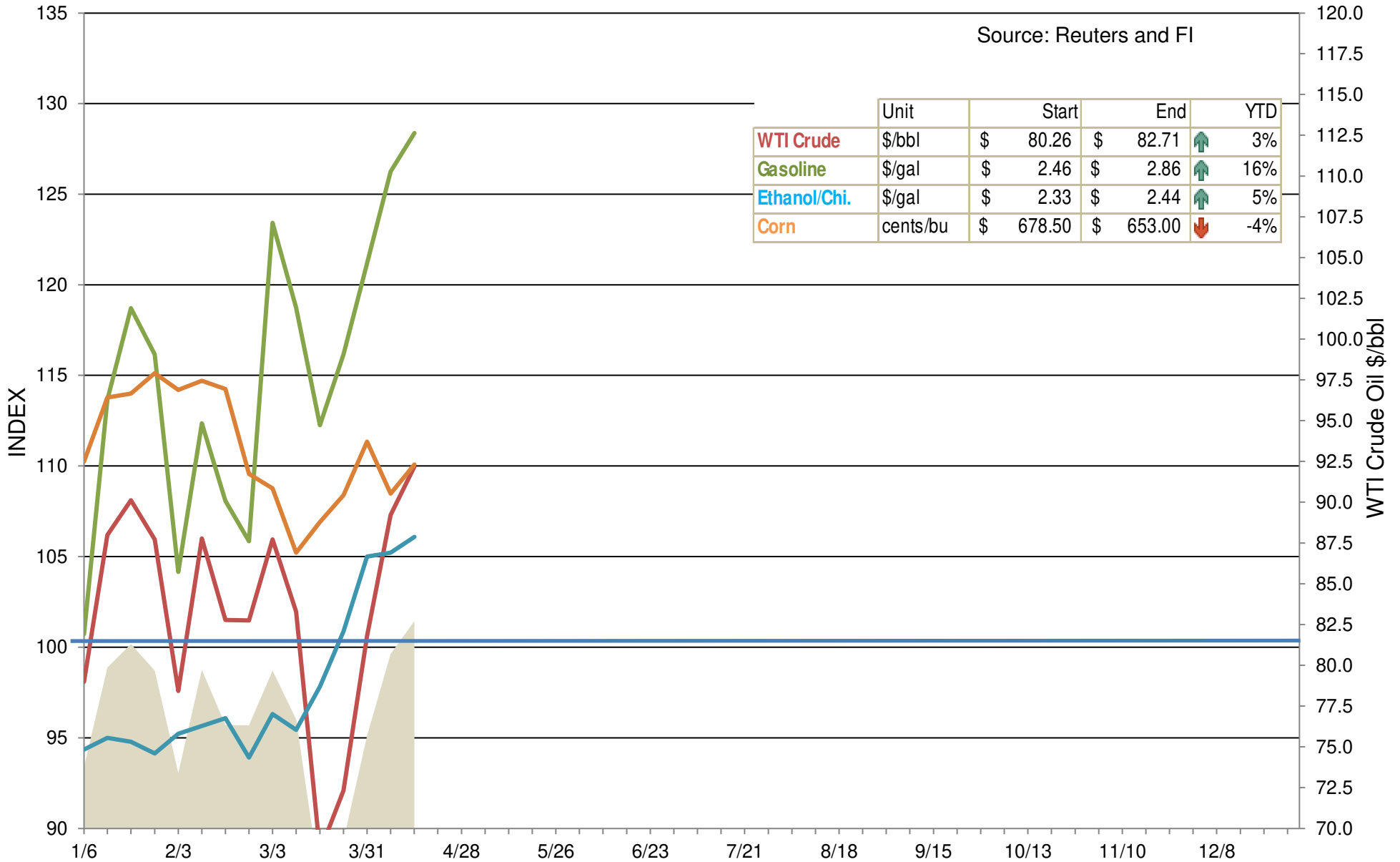
■ Total Blend Etoh

— Etoh Blend %

Indexed Commodity Prices Starting January 2023 versus WTI Crude Nearby Futures

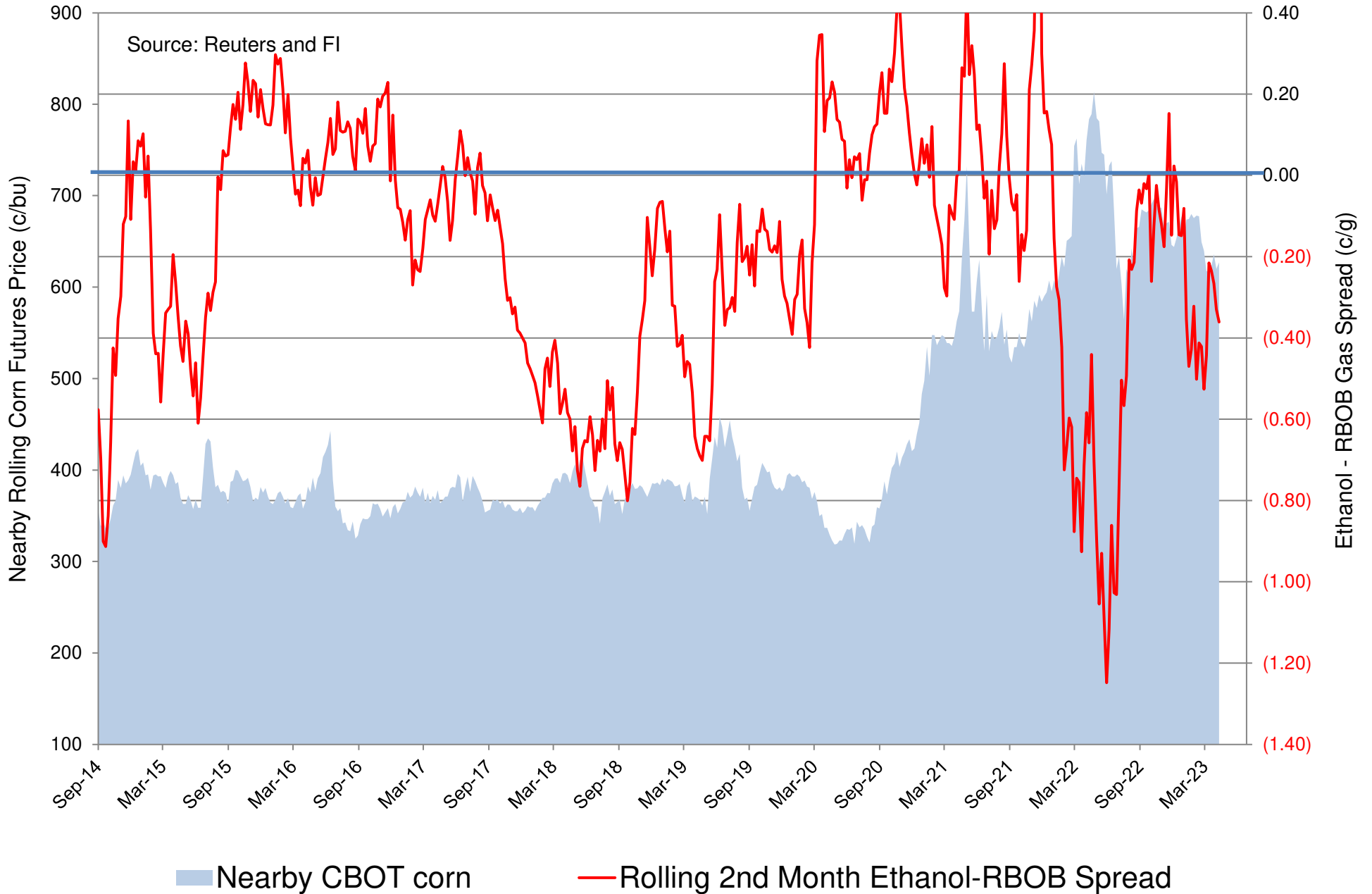
Source: Reuters and FI

	Unit	Start	End	YTD
WTI Crude	\$/bbl	\$ 80.26	\$ 82.71	↑ 3%
Gasoline	\$/gal	\$ 2.46	\$ 2.86	↑ 16%
Ethanol/Chi.	\$/gal	\$ 2.33	\$ 2.44	↑ 5%
Corn	cents/bu	\$ 678.50	\$ 653.00	↓ -4%

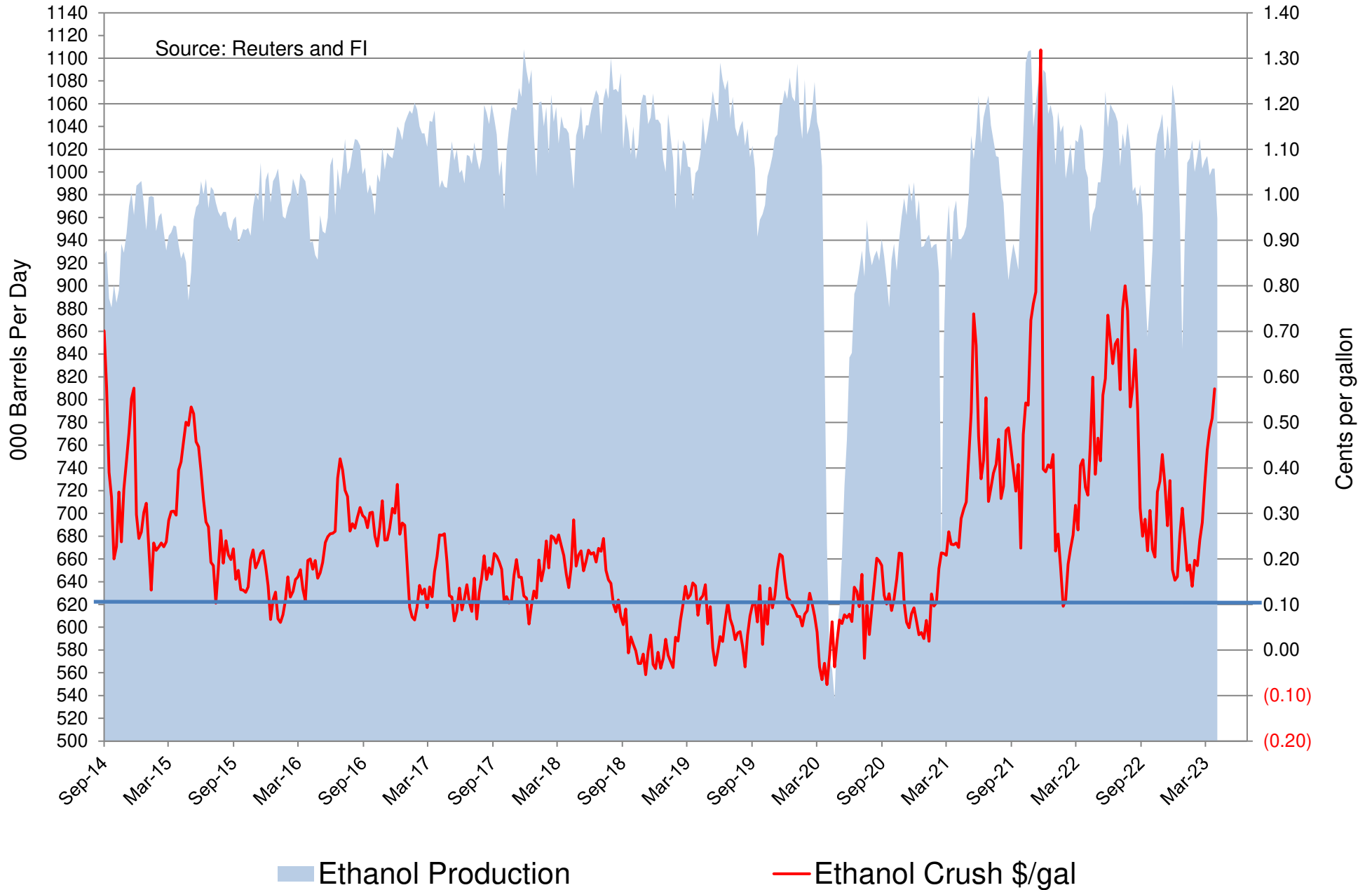


WTI Crude \$/bbl WTI Crude Index Gasoline Index Corn Index Ethanol/Chi. Index

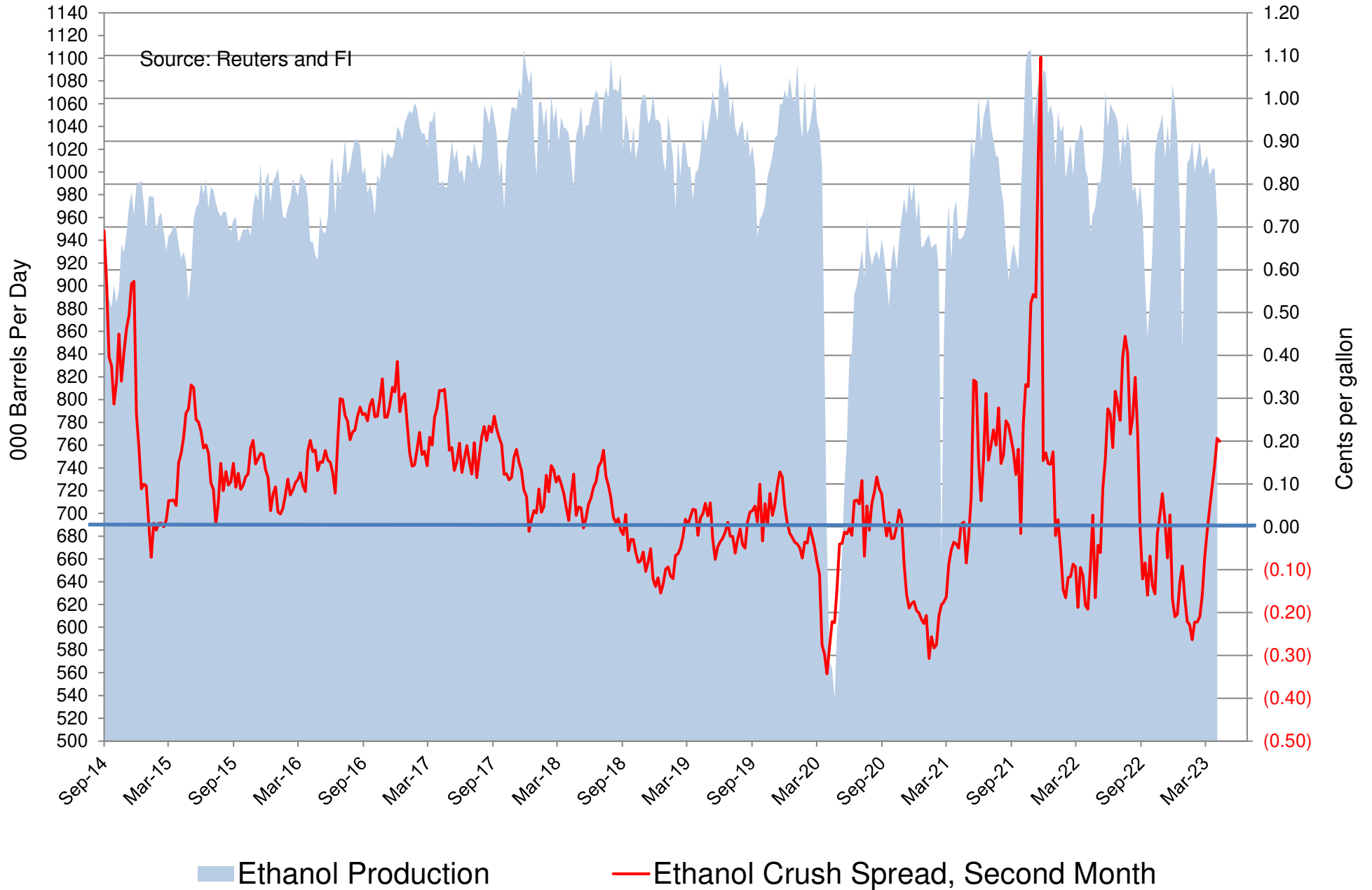
CBOT Second Month Corn Futures versus Second Month Ethanol - RBOB Futures Spread



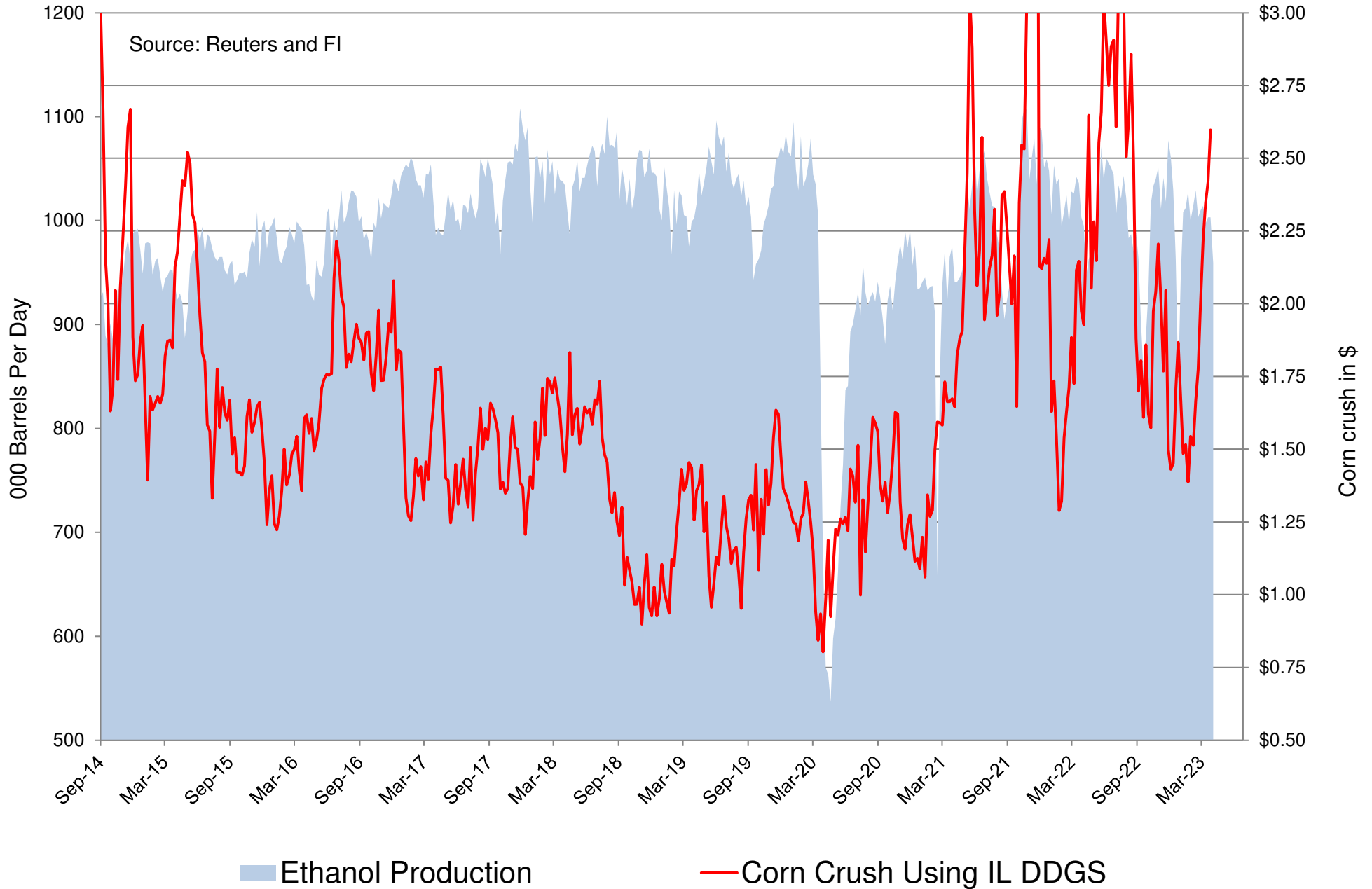
CBOT Second Month Corn Crush Spread versus Weekly Ethanol Production (uses Chicago ethanol and IL DDGS w/ implied costs)



Chicago Platts Second Month Corn Crush Spread versus Weekly Ethanol Production (Straight Calculation)



CBOT Second Month Corn Crush Spread with IL DDGS versus Weekly Ethanol Production (straight 3-commodity calculation)



Disclaimer

TO CLIENTS/PROSPECTS OF FUTURES INTERNATIONAL, SEE RISK DISCLOSURE BELOW:

THIS COMMUNICATION IS CONVEYED AS A SOLICITATION FOR ENTERING INTO A DERIVATIVES TRANSACTION.

Any trading recommendations and market or other information to Customer by Futures International (FI), although based upon information obtained from sources believed by FI to be reliable may not be accurate and may be changed without notice to customer. FI makes no guarantee as to the accuracy or completeness of any of the information or recommendations furnished to Customer. Customer understands that FI, its managers, employees and/or affiliates may have a position in commodity futures, options or other derivatives which may not be consistent with the recommendations furnished by FI to Customer.

The risk of trading futures and options and other derivatives involves a substantial risk of loss and is not suitable for all persons. In purchasing an option, the risk is limited to the premium paid, and all commissions and fees involved with the trade. When an option is shorted or written, the writer of the option has unlimited risk with respect to the option written. The use of options strategies such as a straddles and strangles involve multiple option positions and may substantially increase the amount of commissions and fees paid to execute the strategy. Option prices do not necessarily move in tandem with cash or futures prices. Each person must consider whether a particular trade, combination of trades or strategy is suitable for that person's financial means and objectives.

This material may include discussions of seasonal patterns, however, futures prices have already factored in the seasonal aspects of supply and demand, and seasonal patterns are no indication of future market trends. Finally, past performance is not indicative of future results.

This communication may contain links to third party websites which are not under the control of FI and FI is not responsible for their content. Products and services are offered only in jurisdictions where solicitation and sale are lawful, and in accordance with applicable laws and regulations in each such jurisdiction.